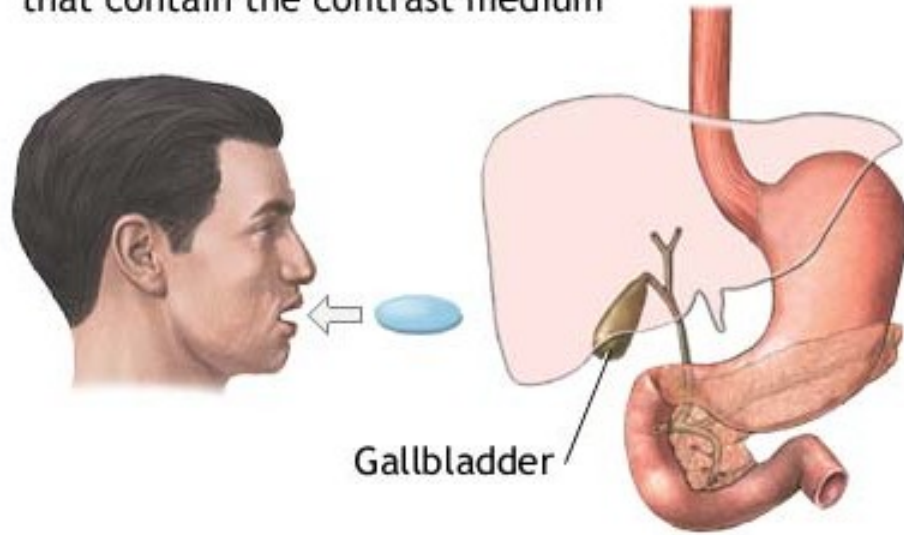


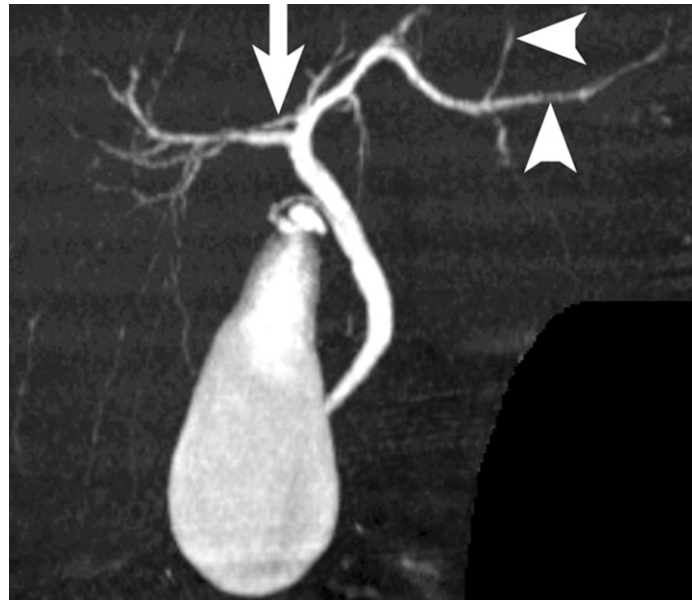
# ZOBRAZOVACÍ METODY- HEPAR, LIEN, PANCREAS

6 tablets (1 at a time) are swallowed  
that contain the contrast medium

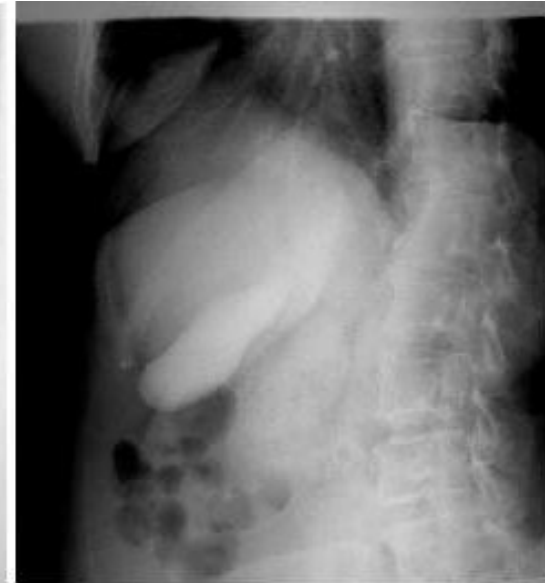
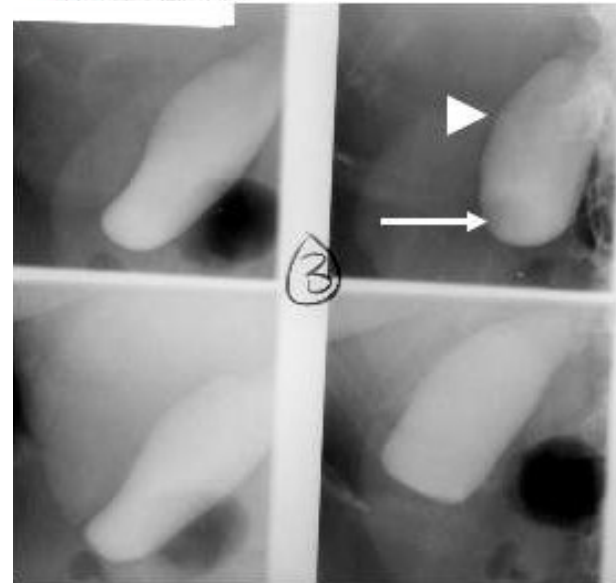


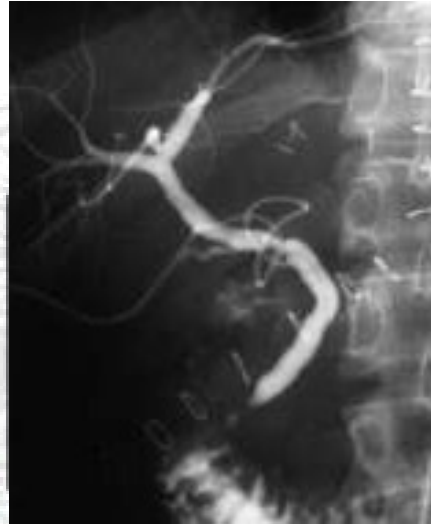
## cholecystografie

jodové preparáty!!!  
zobrazen jen žlučník!!



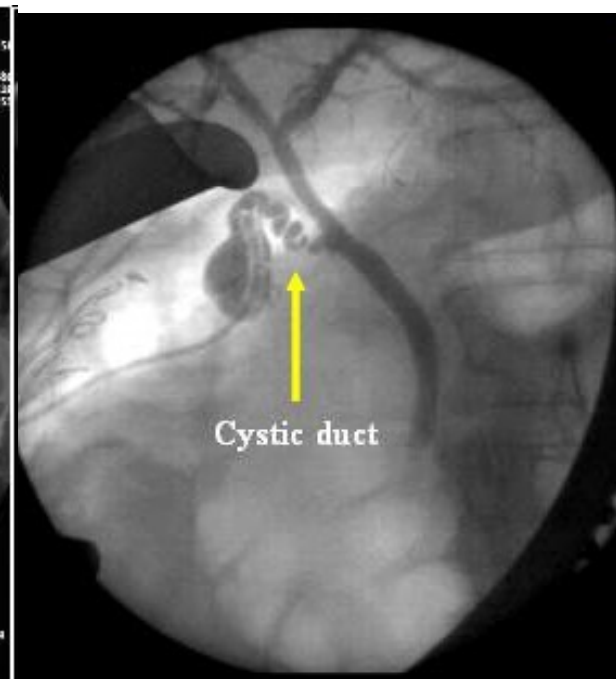
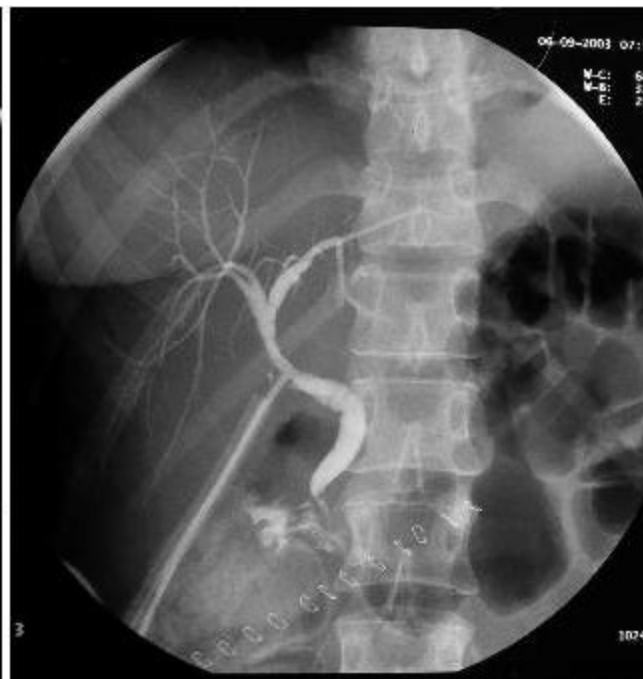
ADAM.





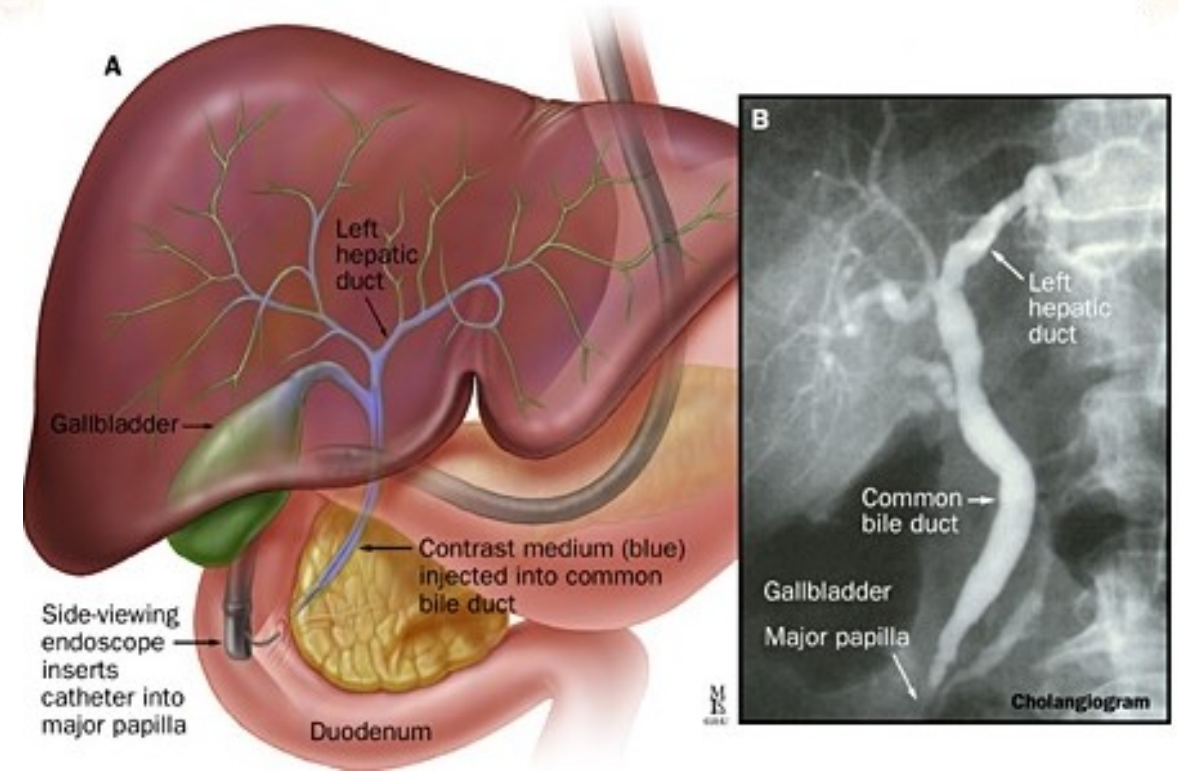
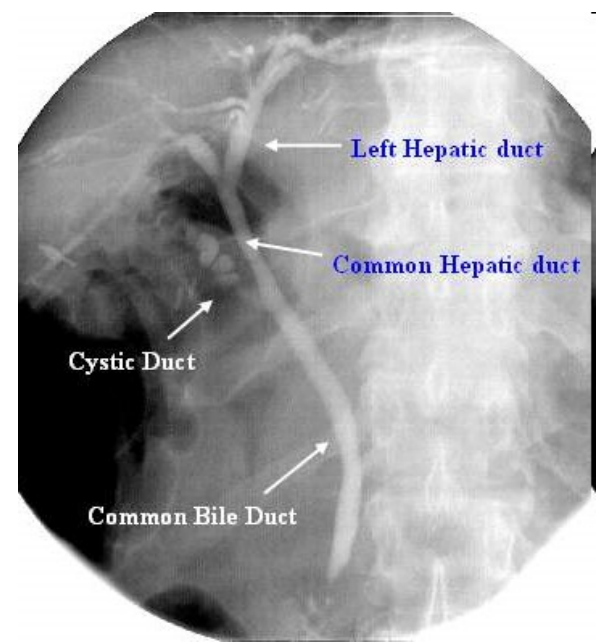
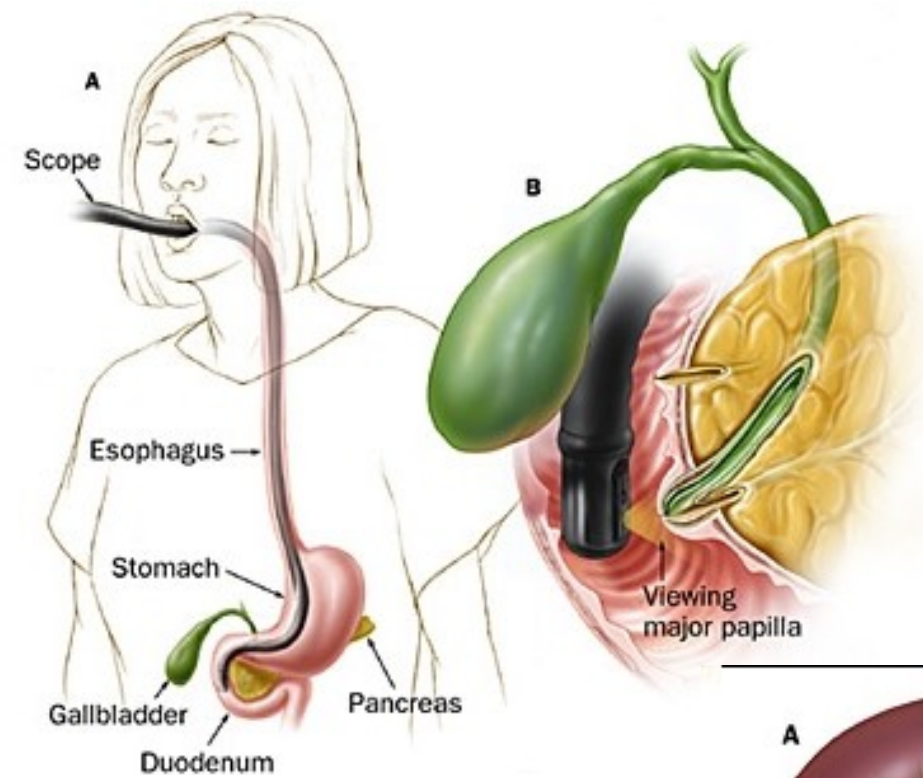
## cholangiografie

zobrazen žlučník i žlučové cesty



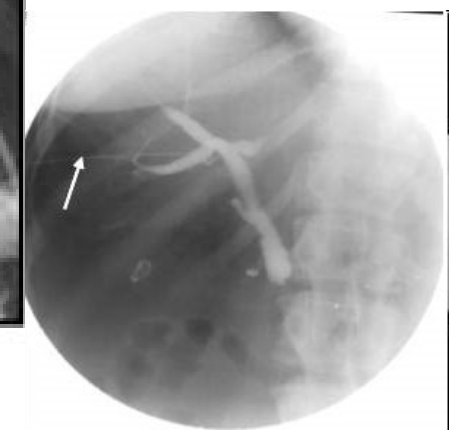
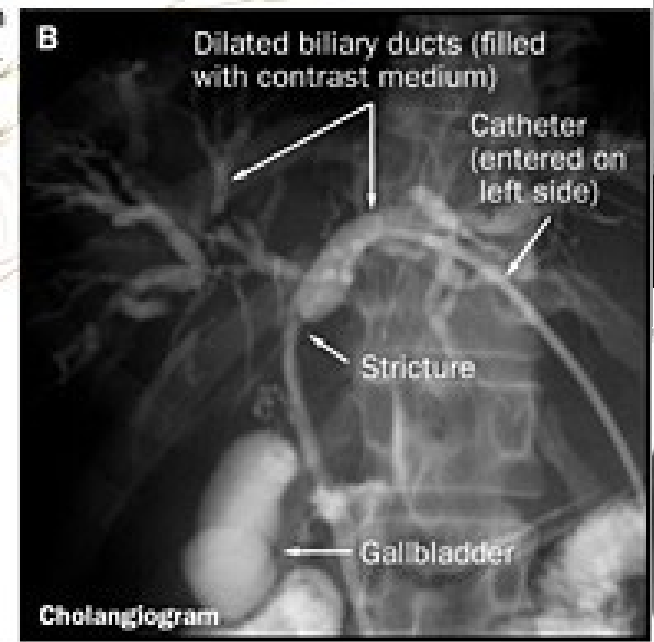
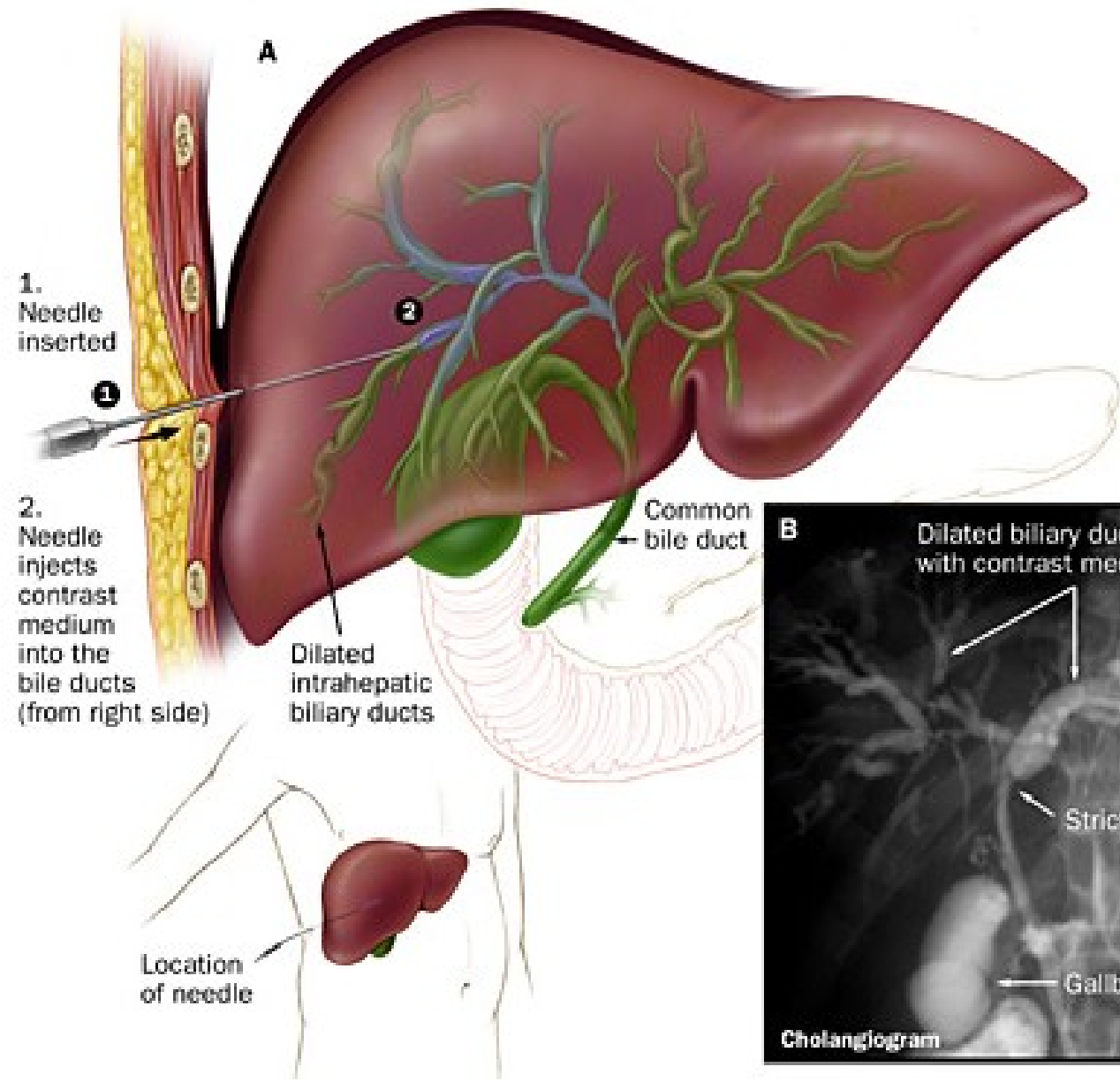
# ERCP

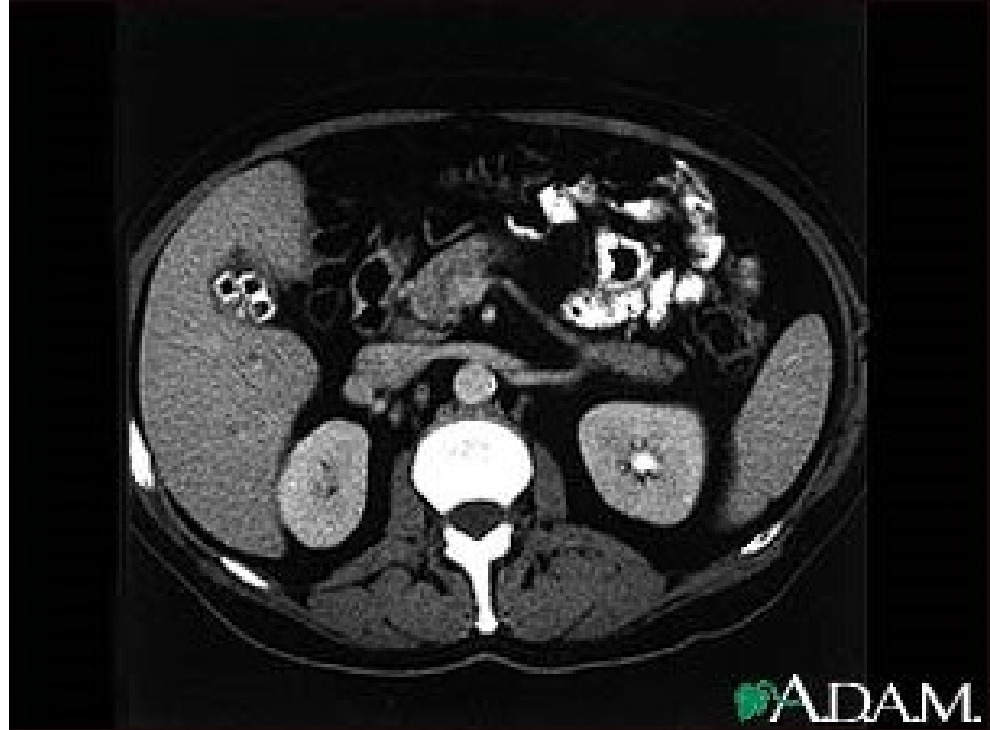
(endoskopická retrográdní cholangiopancreatikografie)



# PTC

(perkutánní  
transhepatální  
cholangiografie)





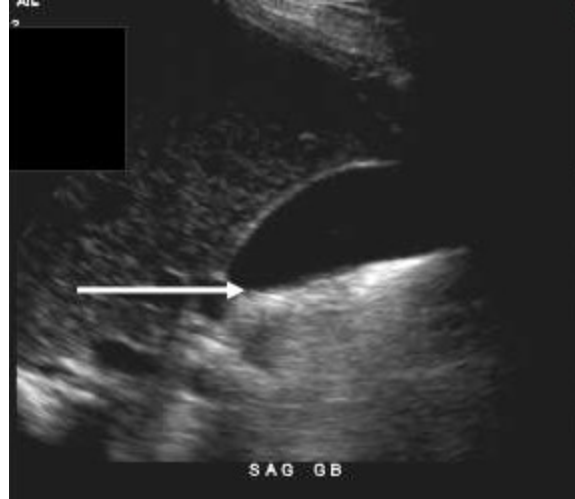
CT- poloha jater



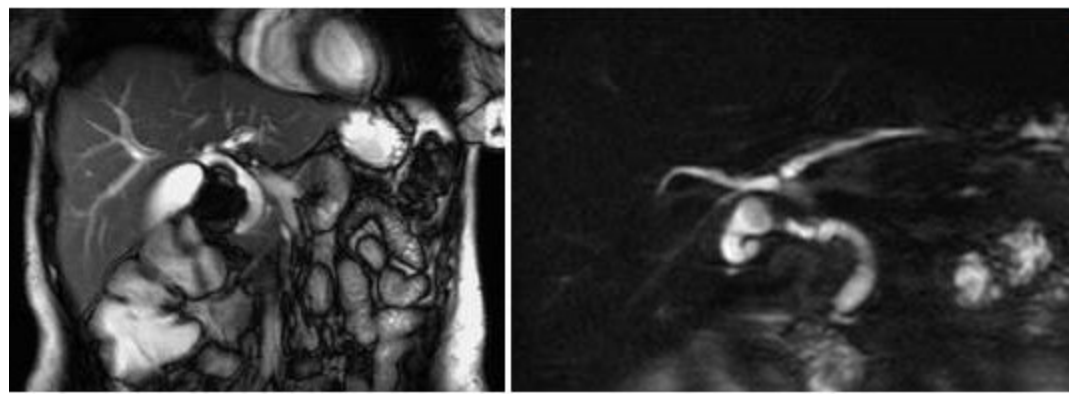
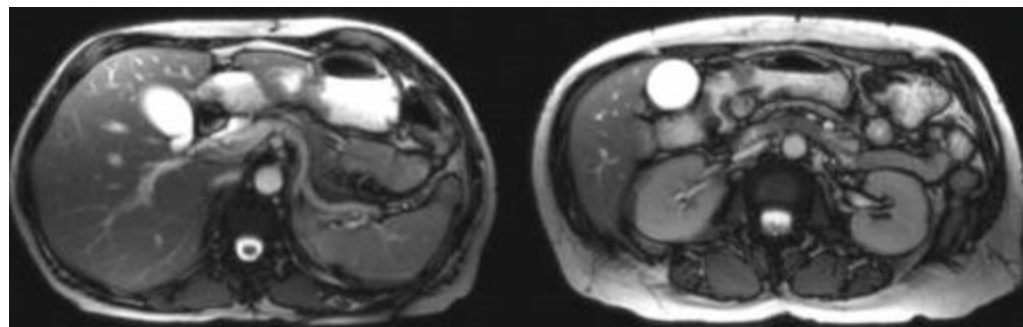
CT- poloha pankreatu



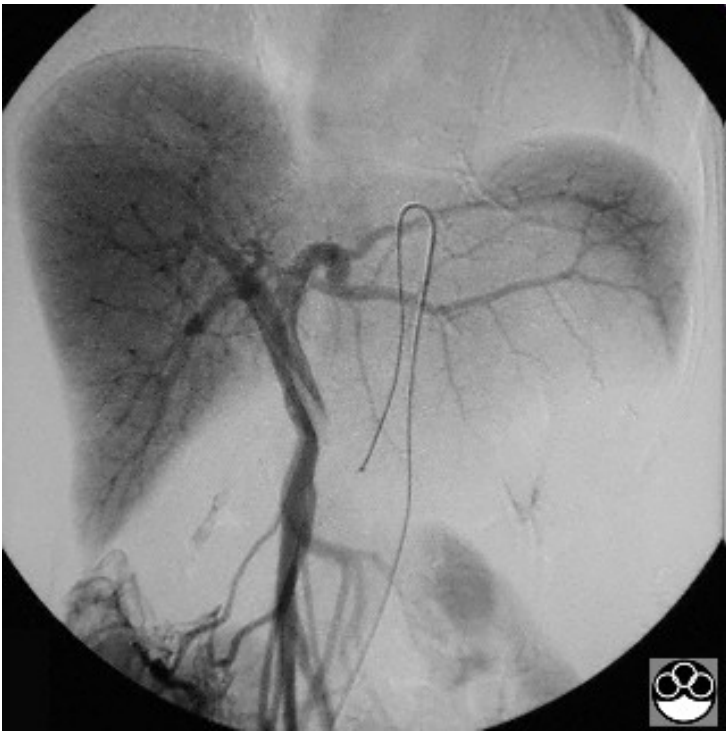
CT- žlučník s kameny



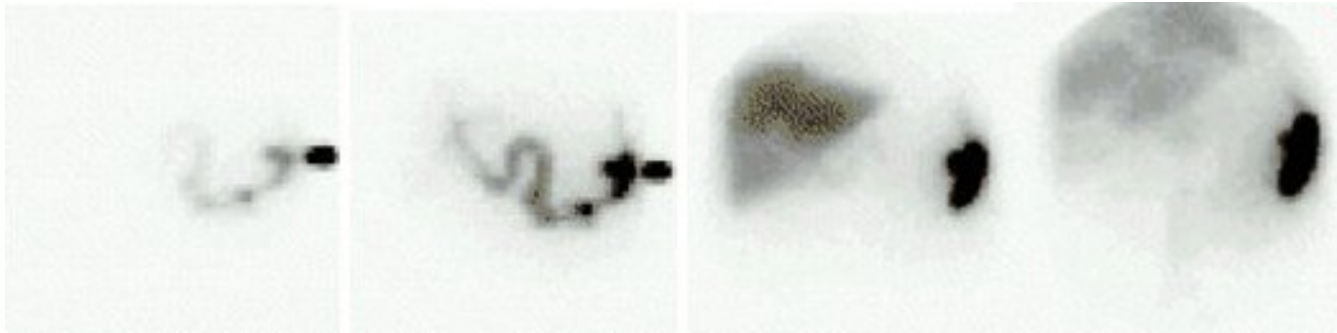
**SONO- žlučník**



**Magnetic Resonance  
Cholangiopancreatography  
(MRCP)**



## Splenoportografie



S radionuklidem