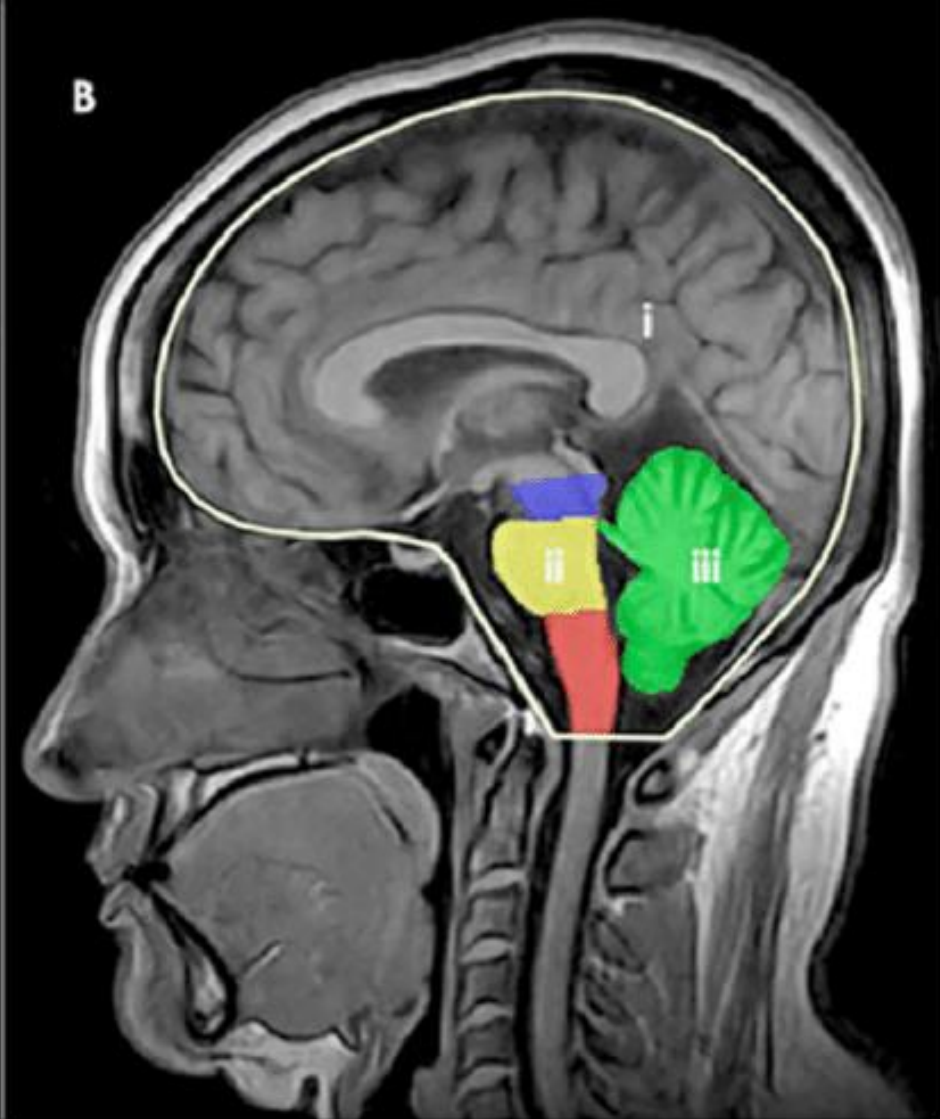
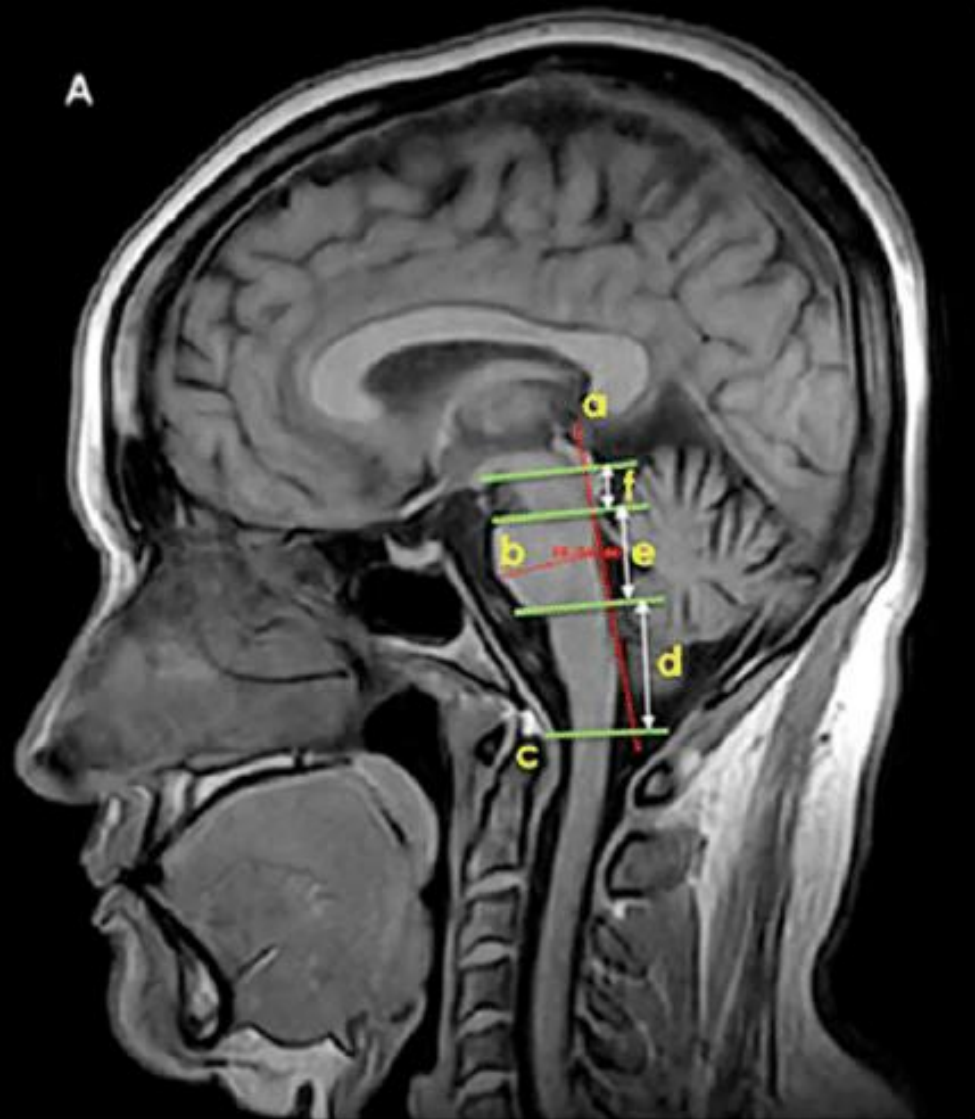
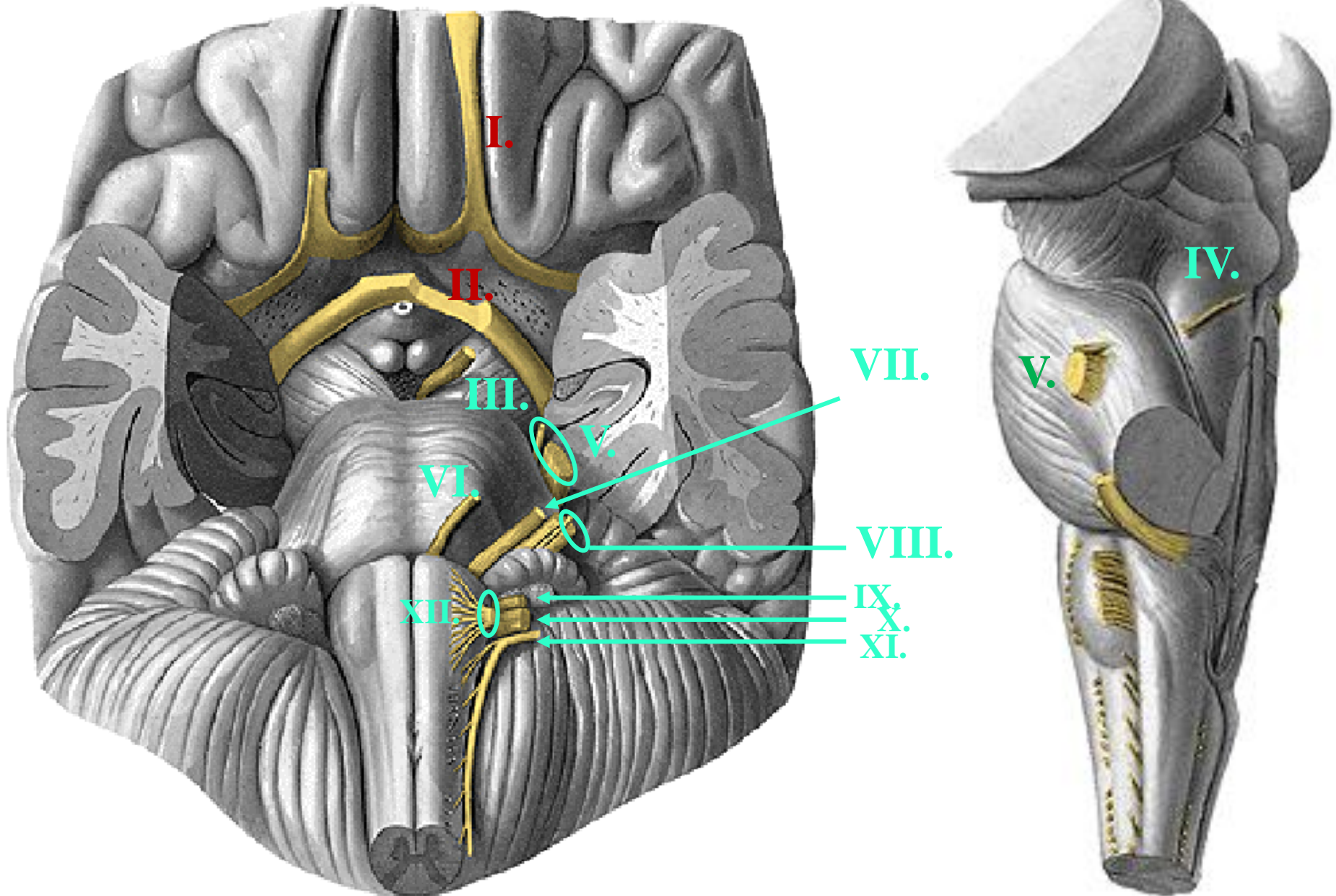
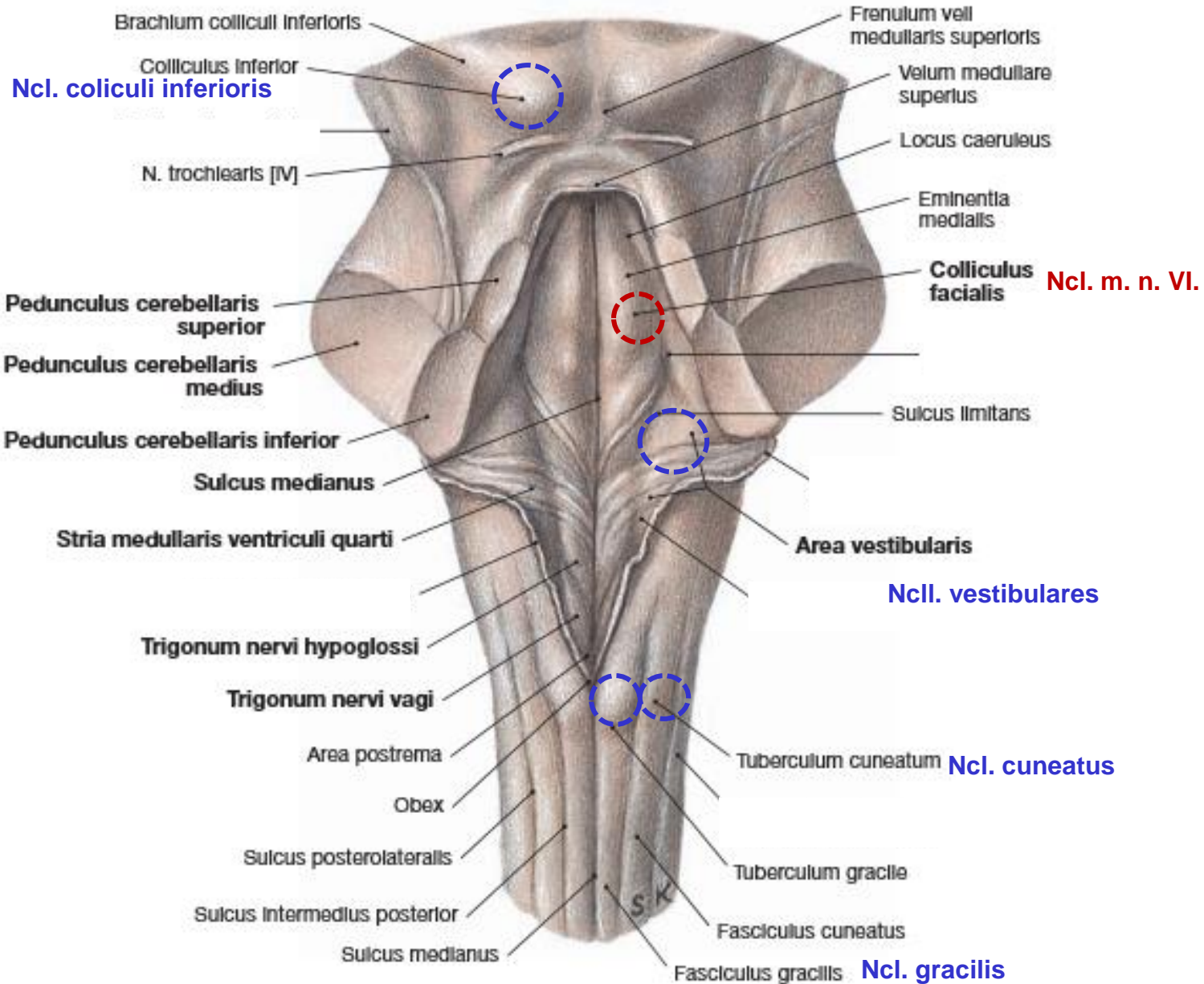


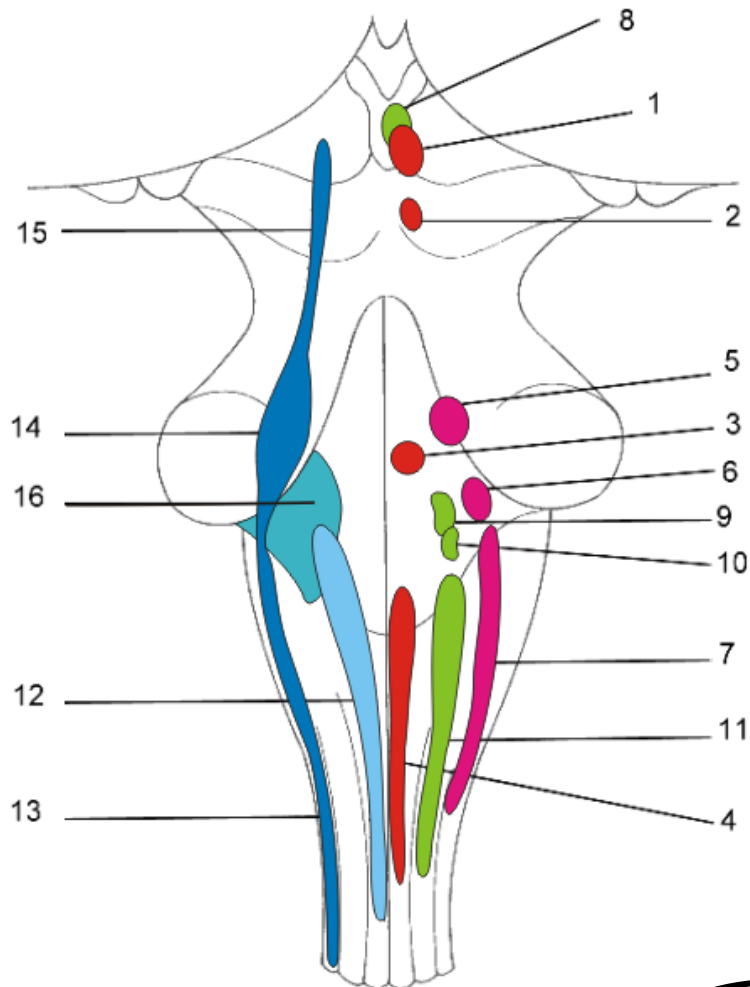
BRAINSTEM



BRAINSTEM – appearance of cranial nerves







SM

- 1 - ncl. motorius (originis) n. III.
- 2 - ncl. motorius (originis) n. IV.
- 3 - ncl. motorius (originis) n. VI.
- 4 - ncl. motorius (originis) n. XII.

BM

- 5 - ncl. motorius (masticatorius) n. V.
- 6 - ncl. motorius (originis) n. VII.
- 7 - ncl. motorius (originis) n. IX., X., et XI (ncl. ambiguus)

VM

- 8 - ncl. parasympathicus n. III (ncl. E.W.)
- 9 - ncl. parasympathicus n. VII.
- 10 - ncl. parasympathicus n. IX.
- 11 - ncl. parasympathicus n. X.

VS

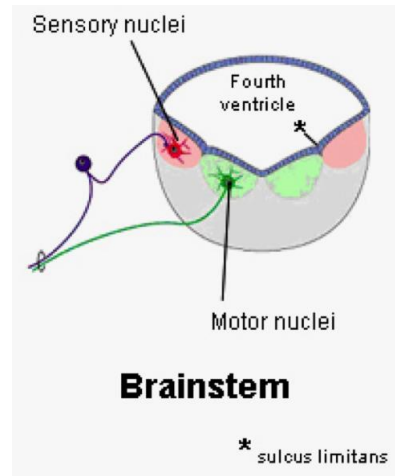
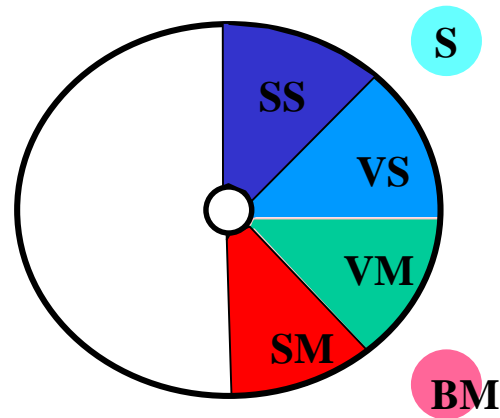
- 12 - ncl. solitarius

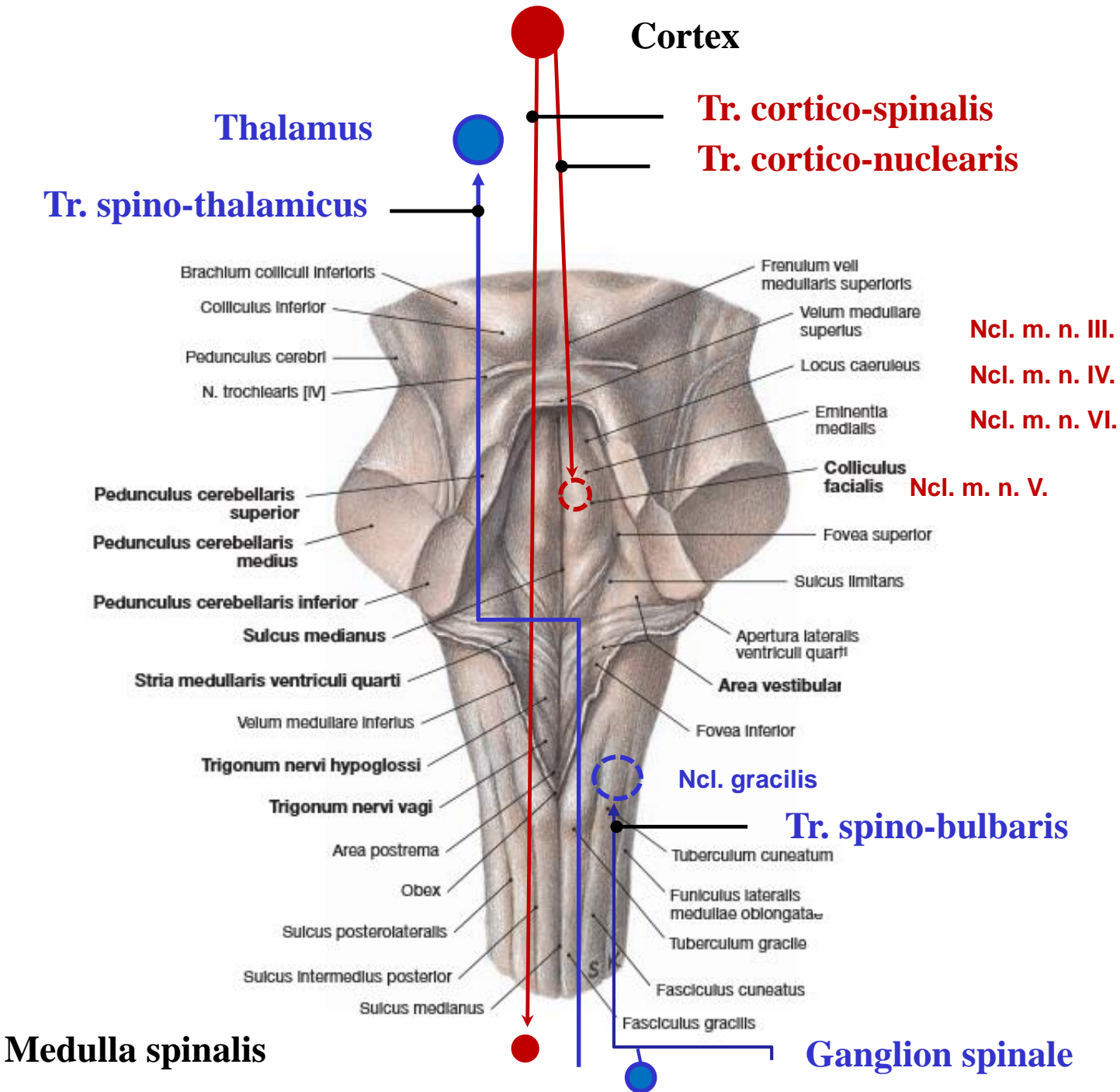
SS

- 13 - ncl. spinalis n. V.
- 14 - ncl. principalis n. V.
- 15 - ncl. mesencephalicus n. V.

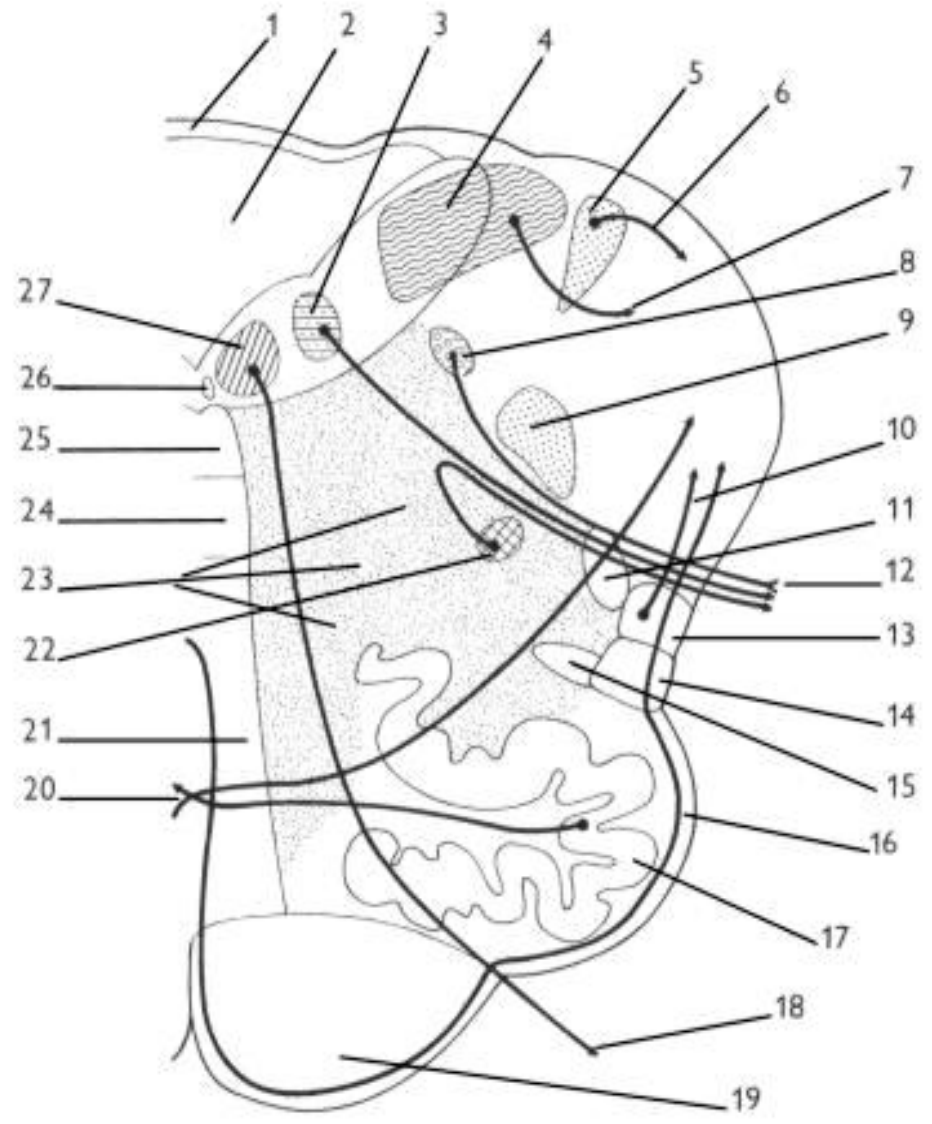
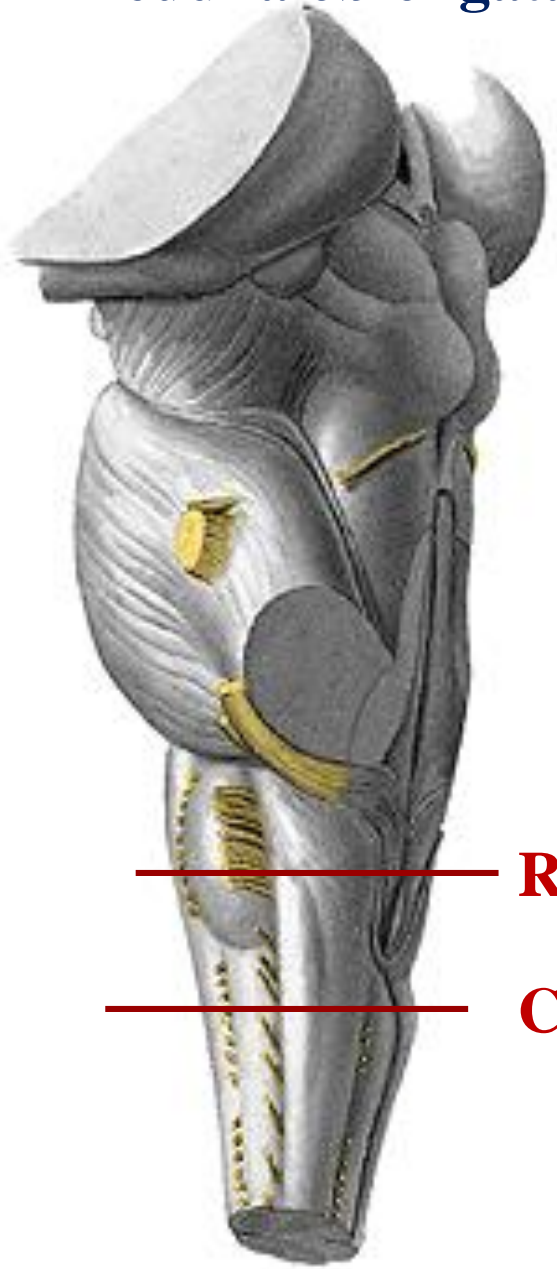
S

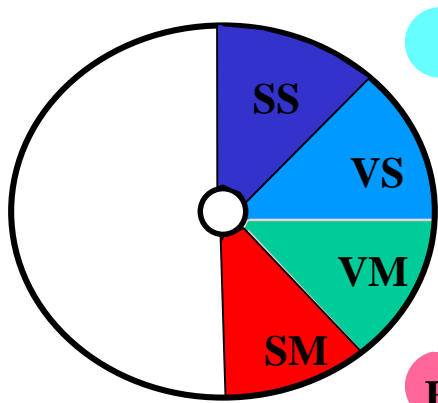
- 16 - ncl. cochleares et vestibulares





Medulla oblongata (oblongata) – representative sections





ncl. et tr. solitarius

ncl. parasymp. n. X

BM

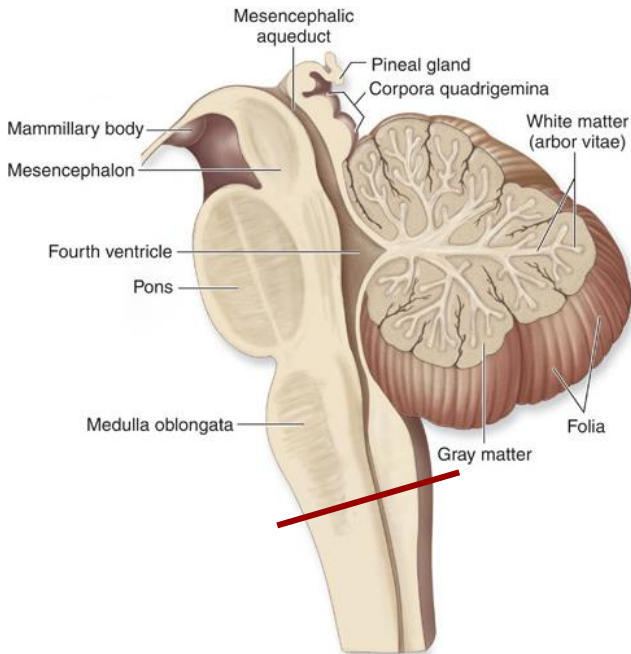
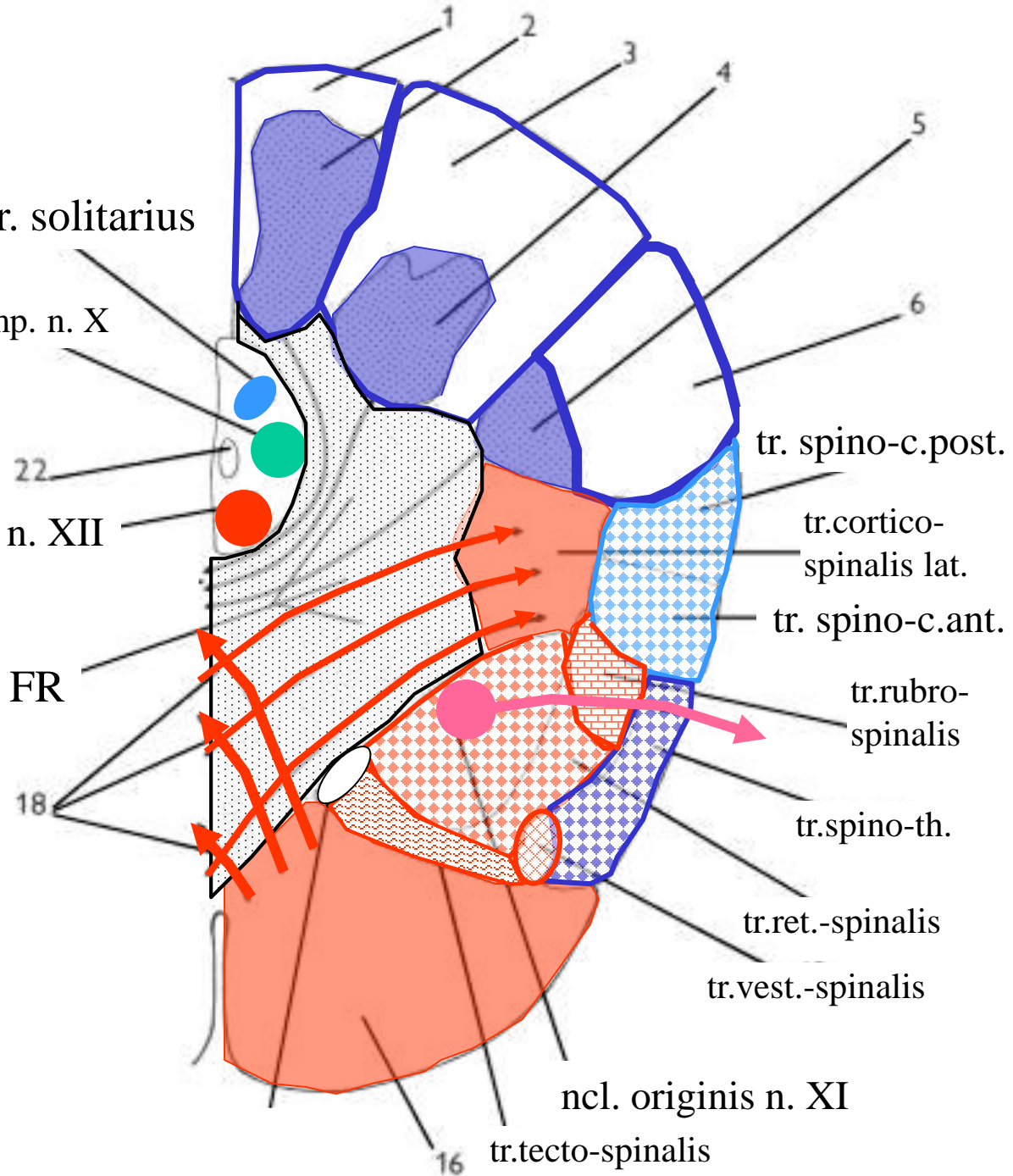
ncl. originis n. XII

FR

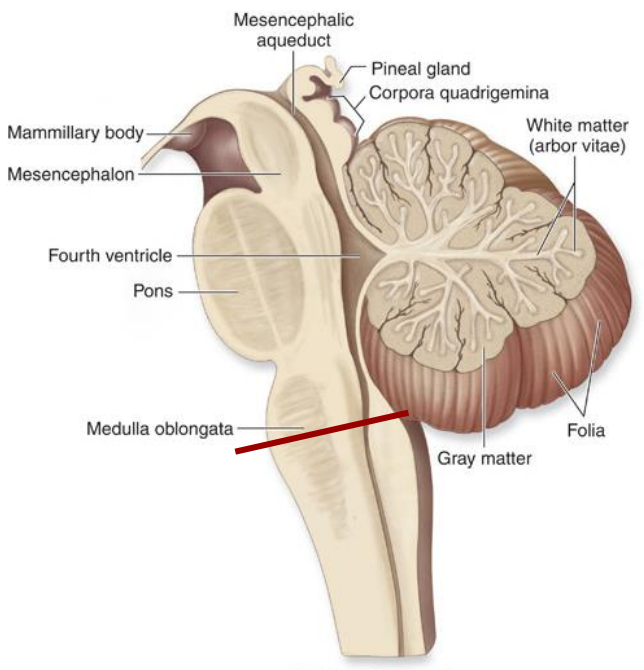
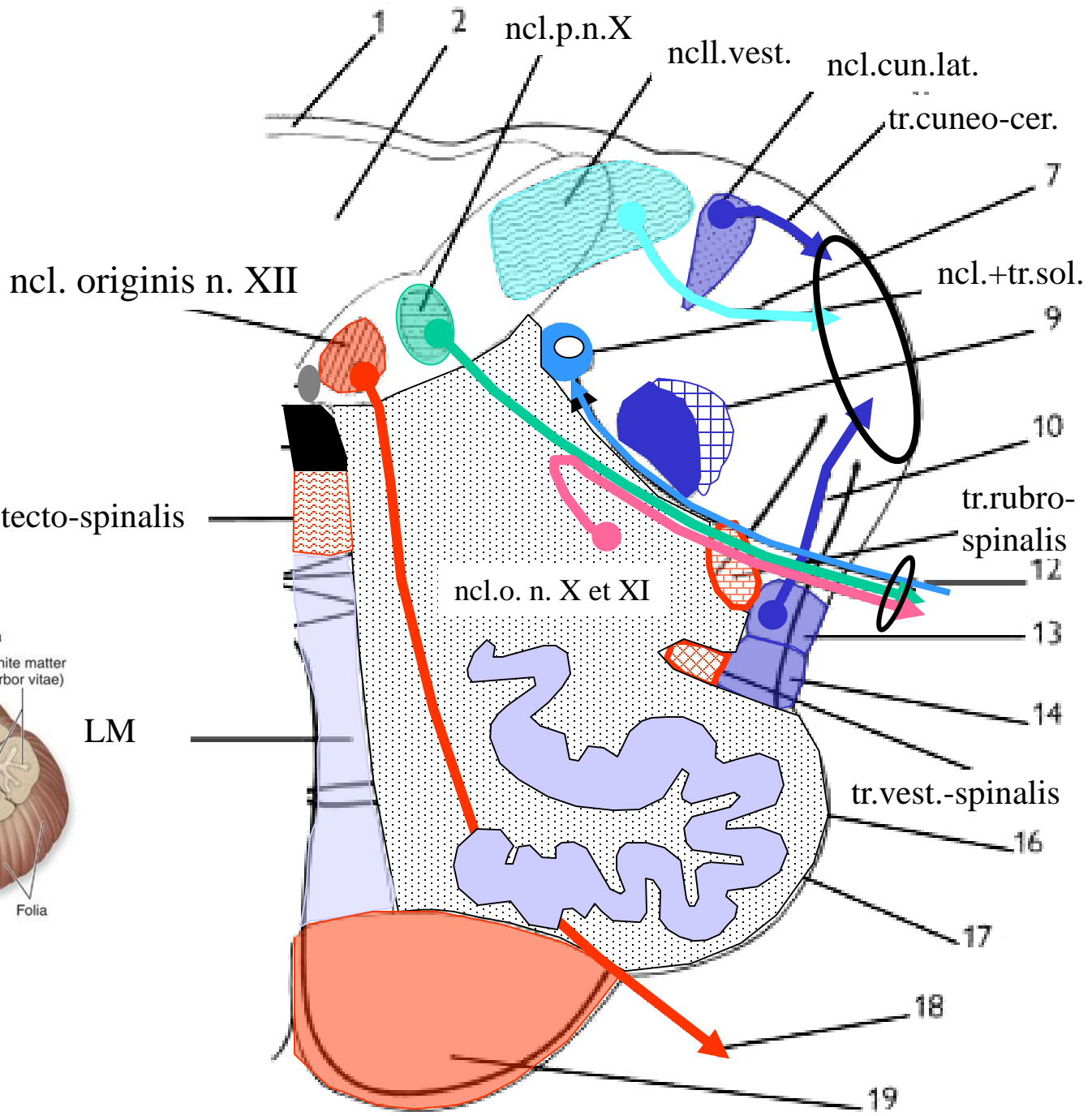
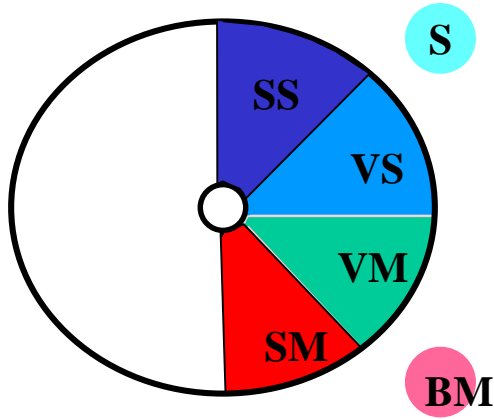
18

ncl. originis n. XI

16 tr.tecto-spinalis



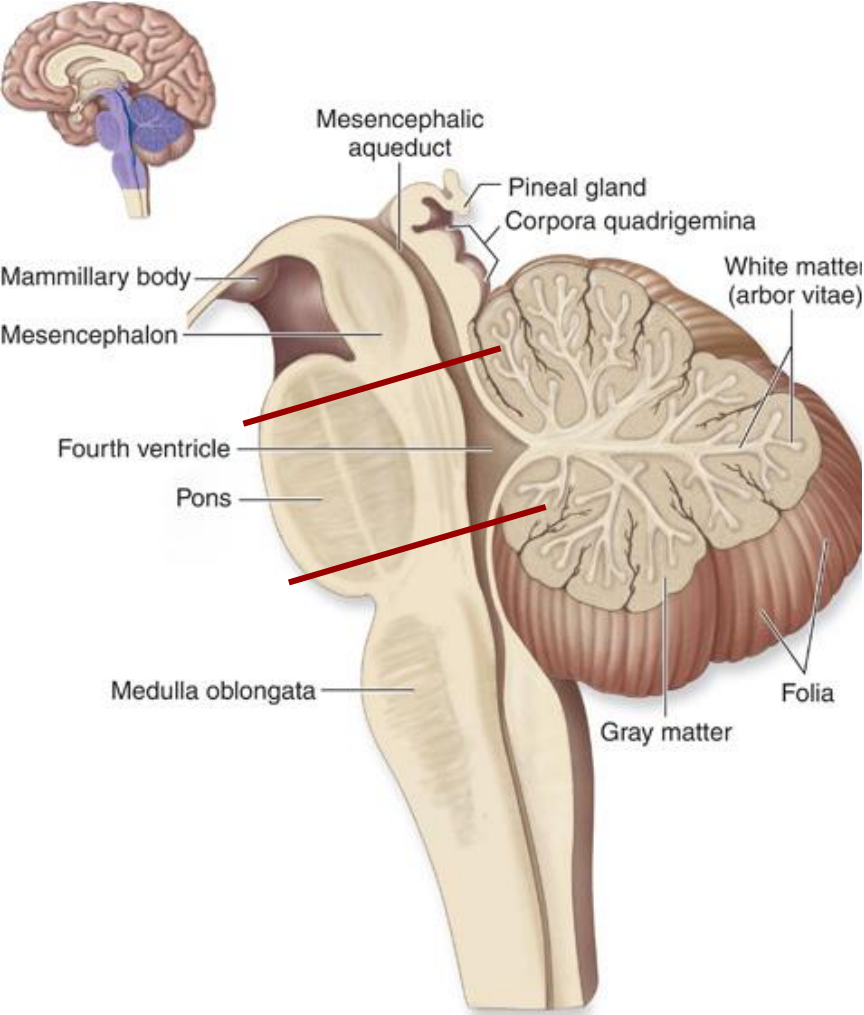
(a) Midsagittal section



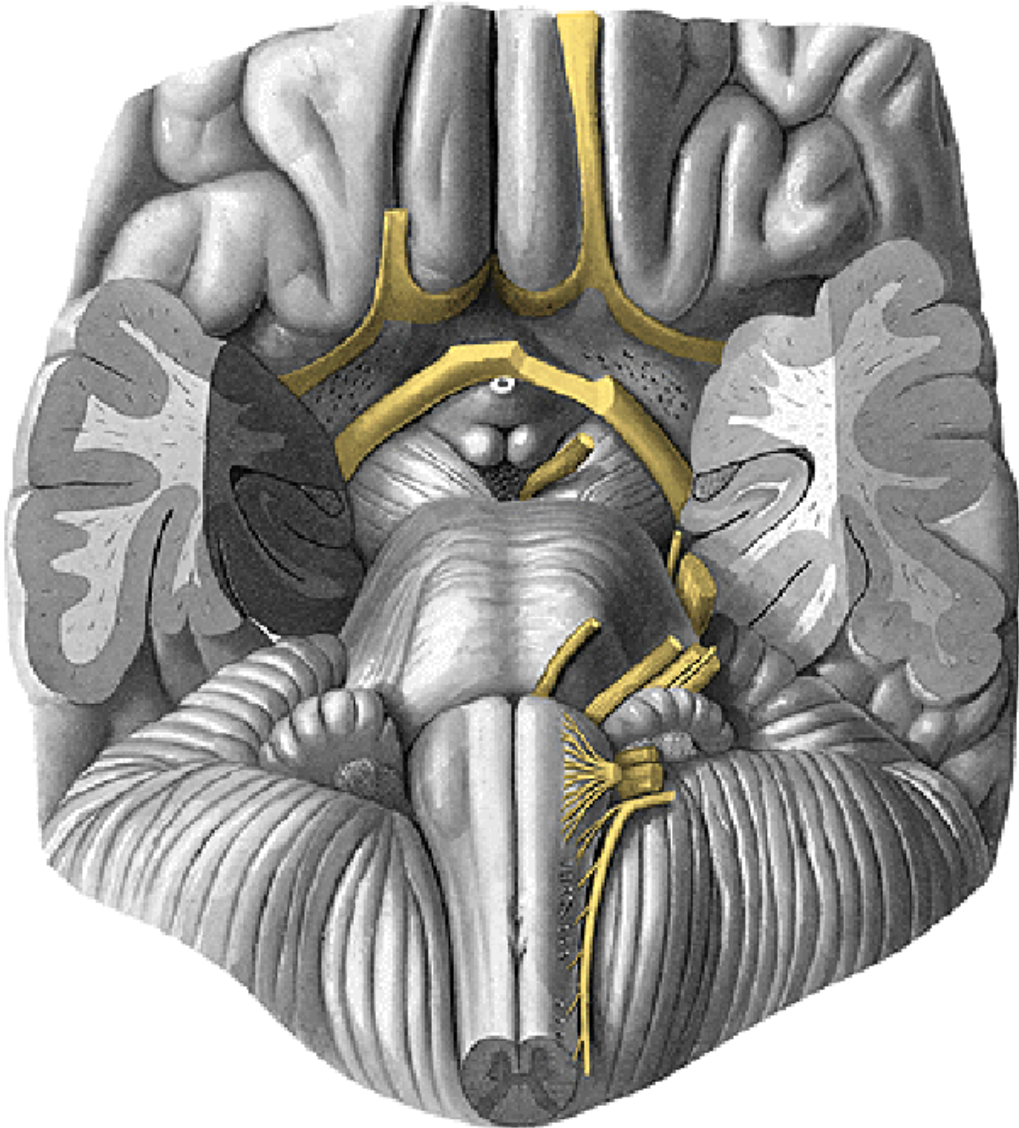
(a) Midsagittal section

LM

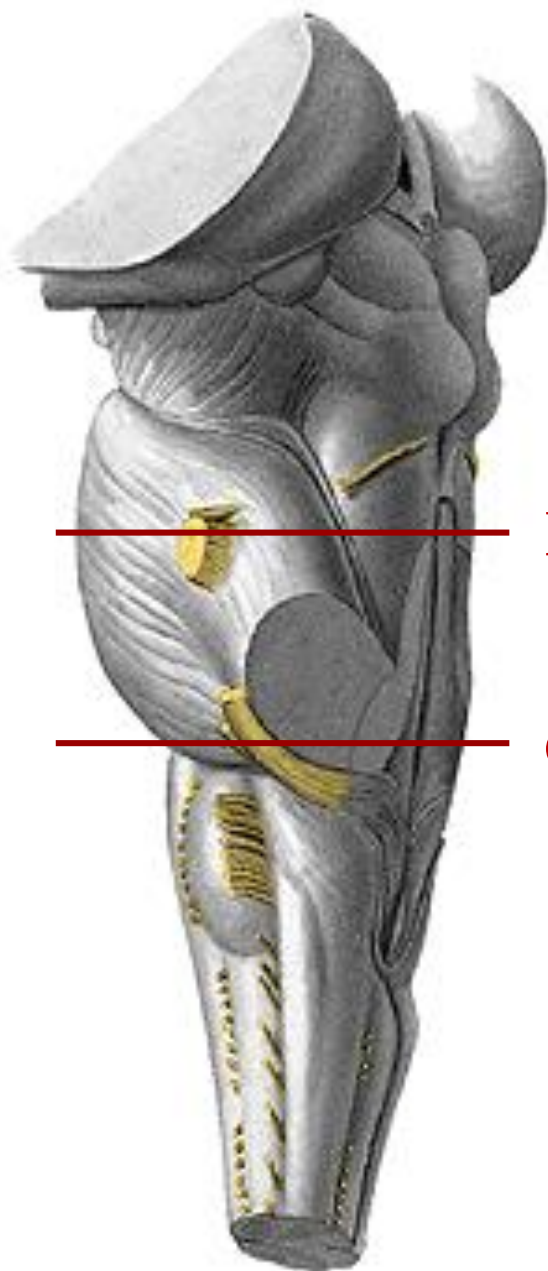
Pons



(a) Midsagittal section

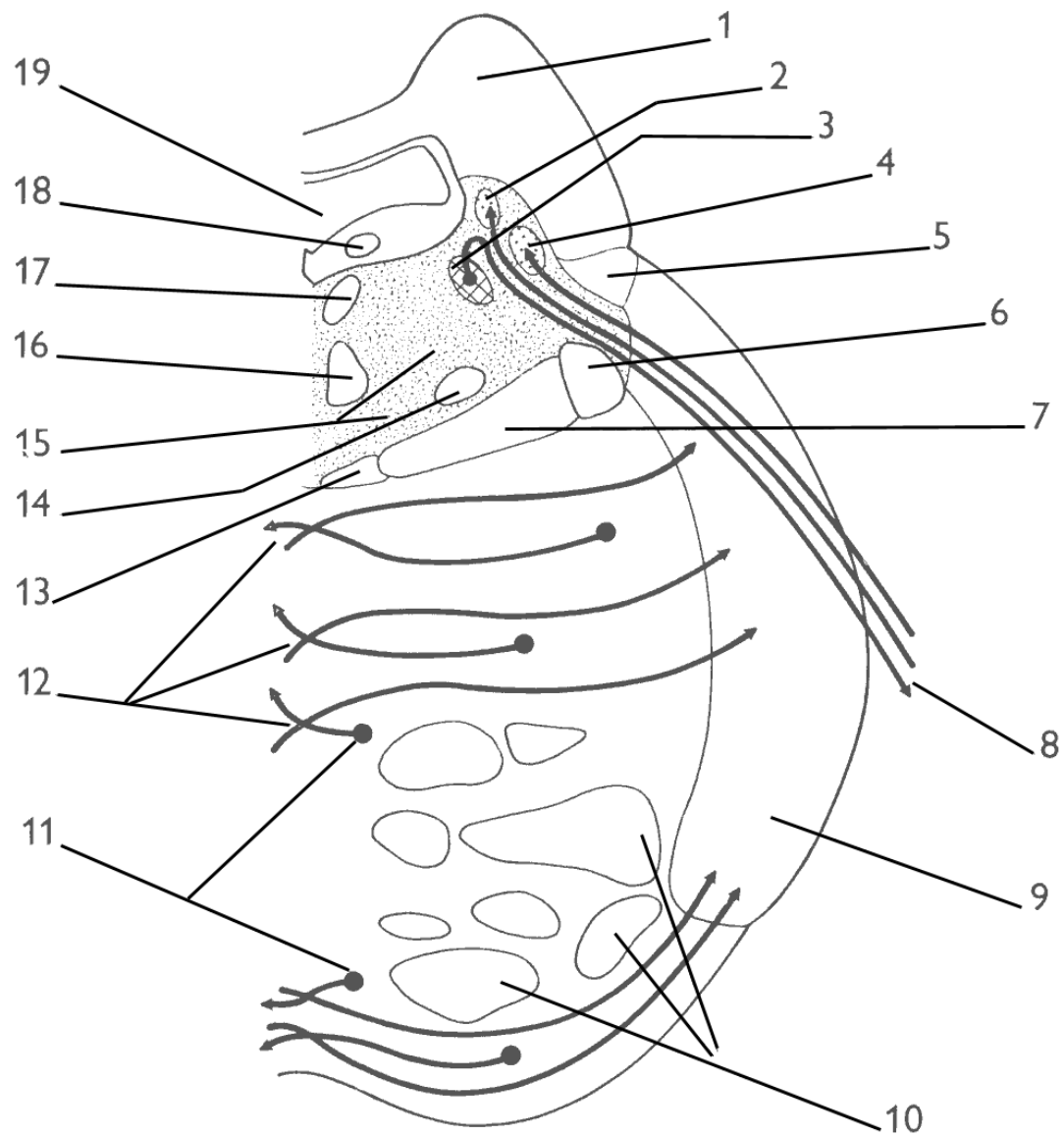


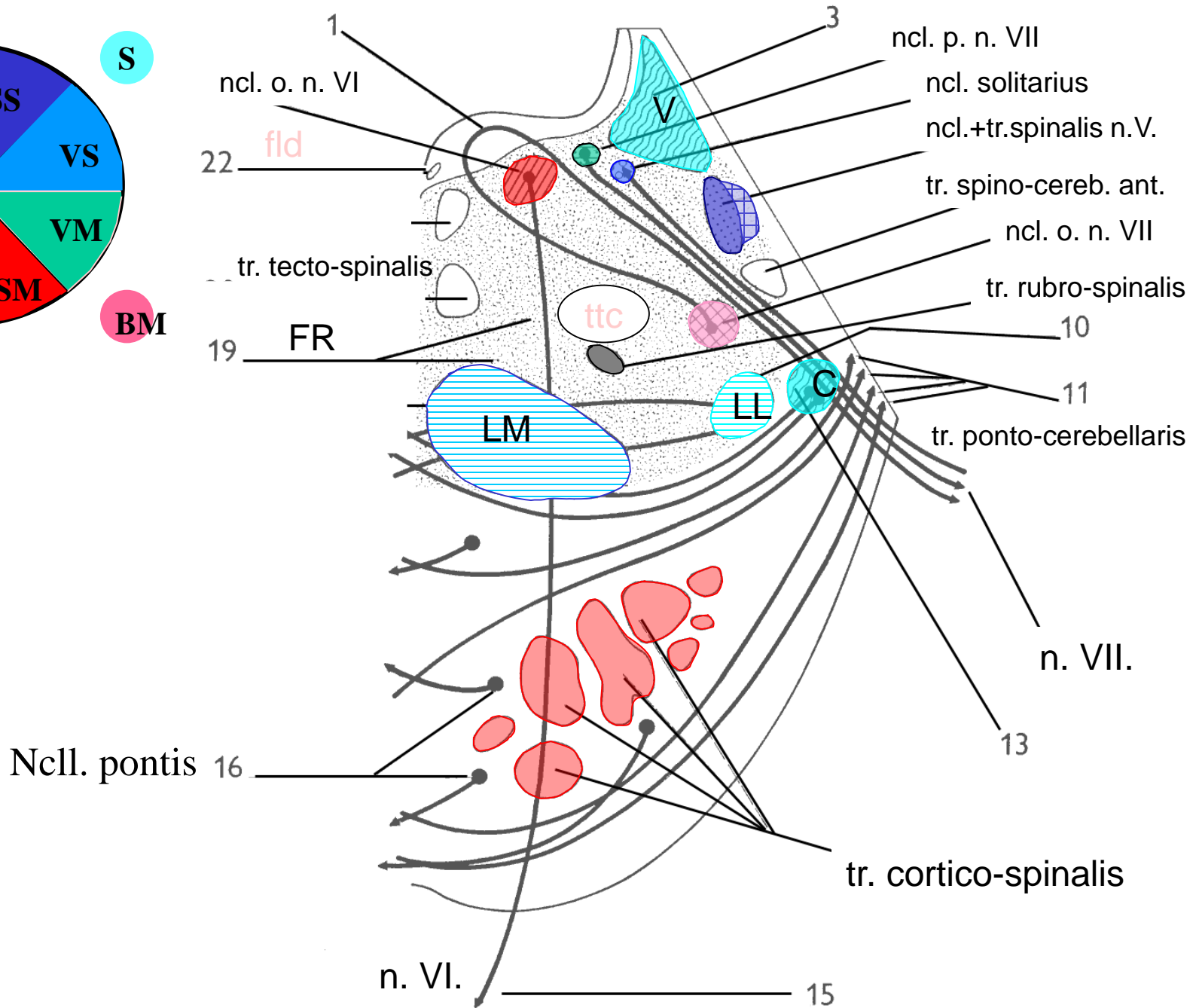
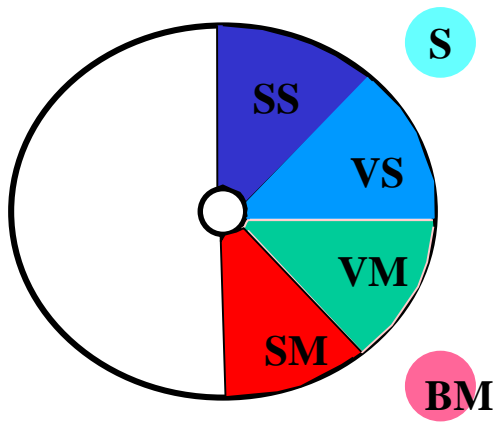
Pons – representative sections

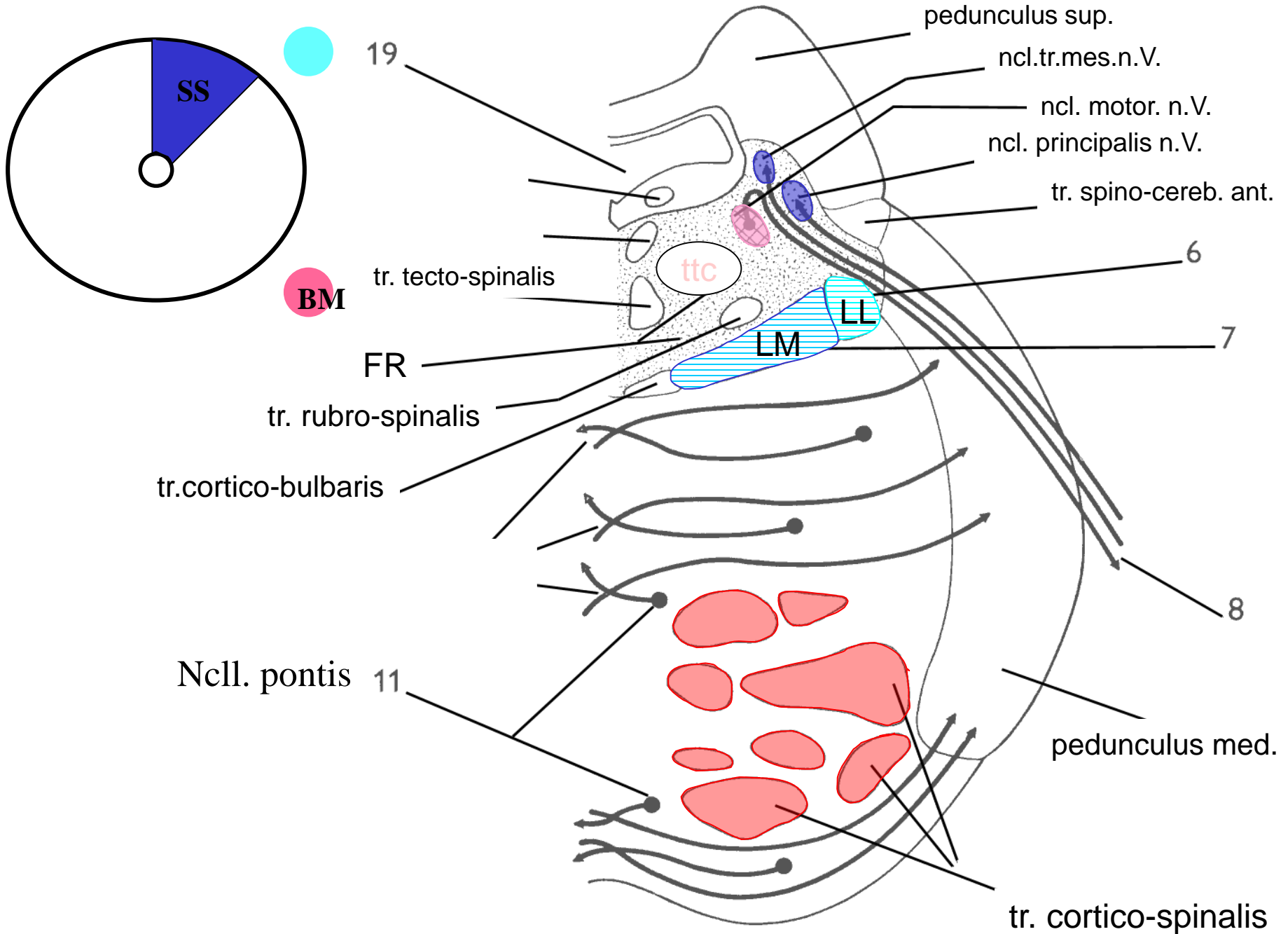


R

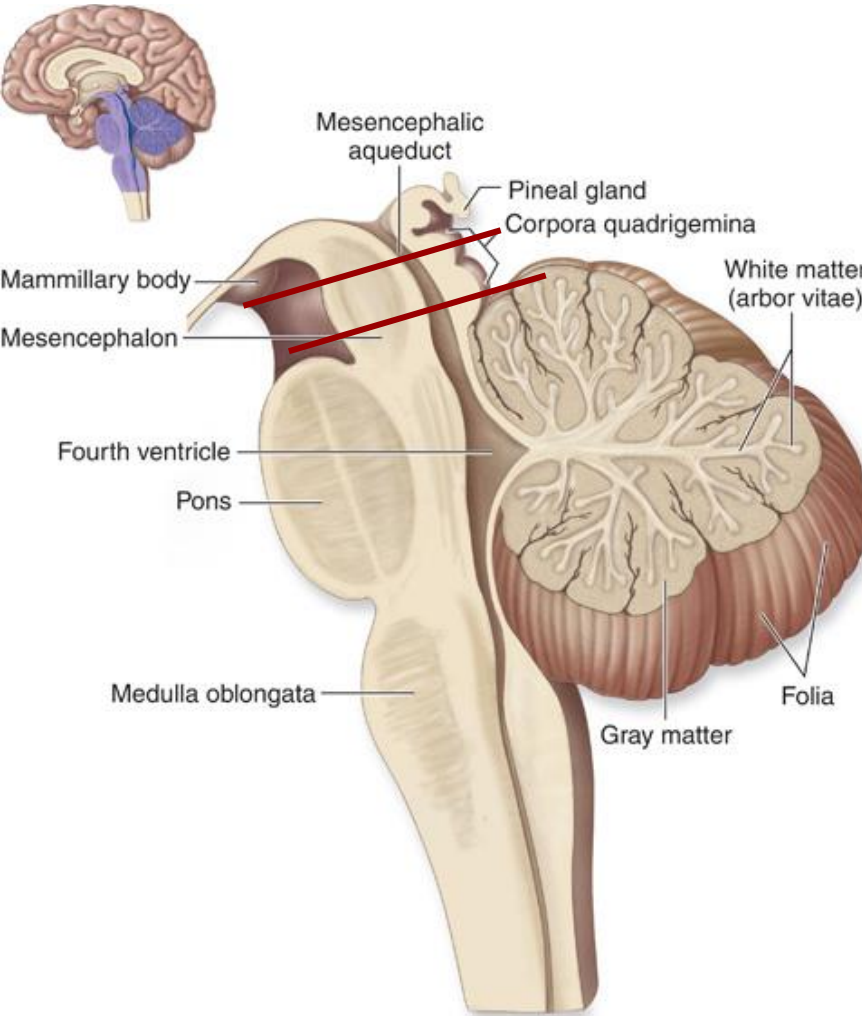
C



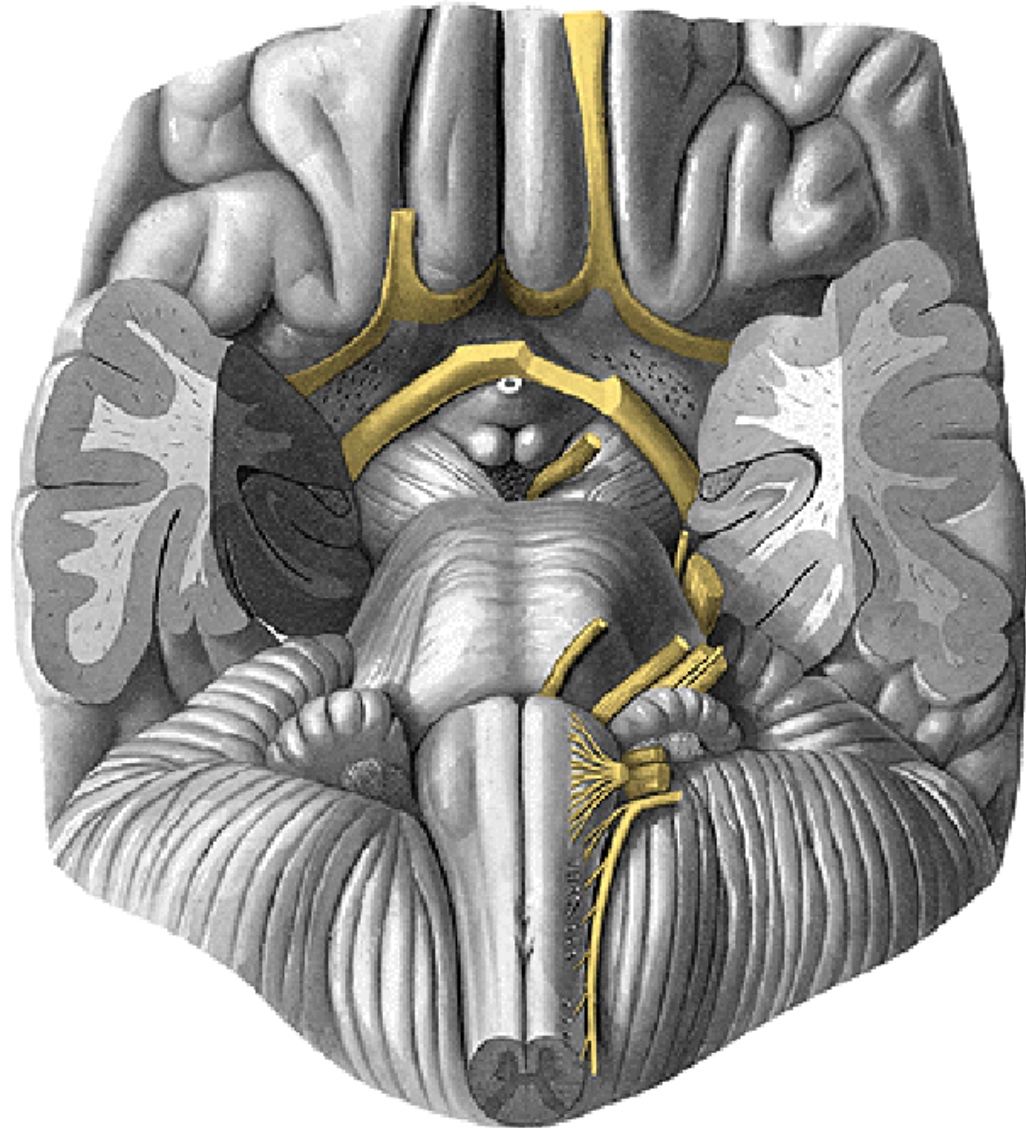




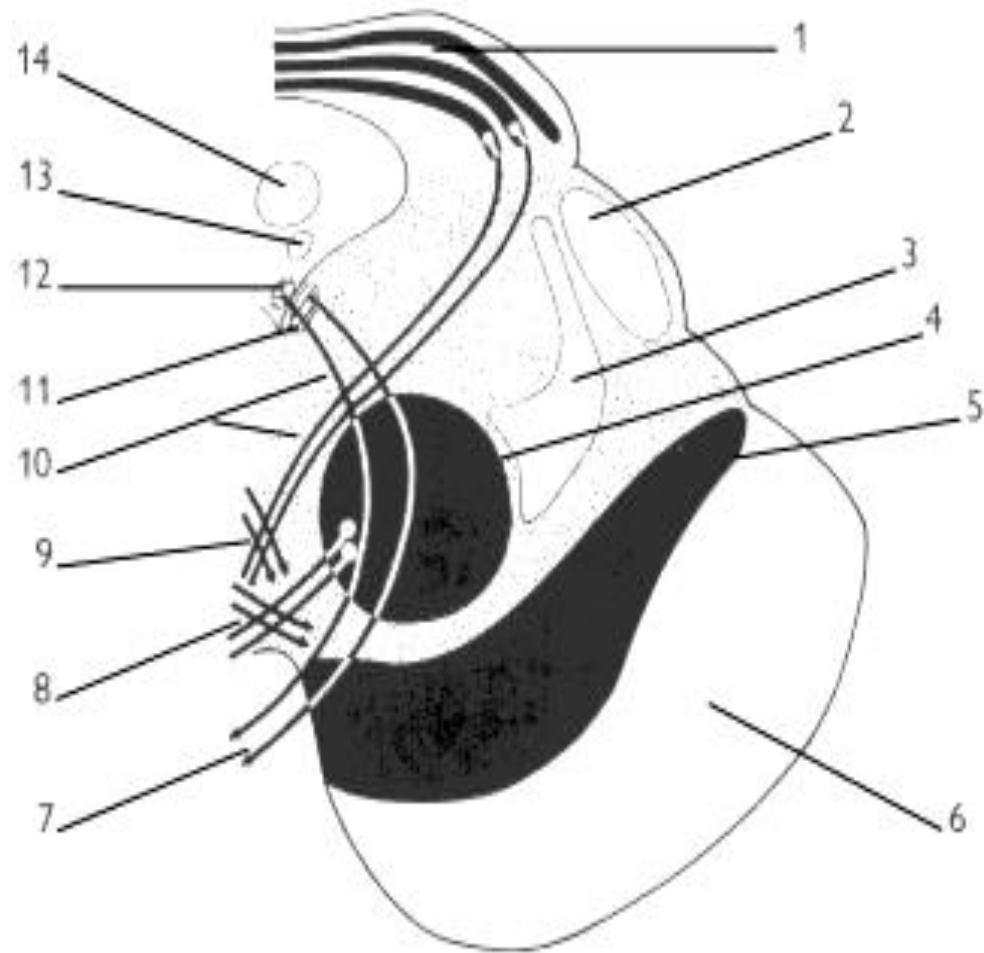
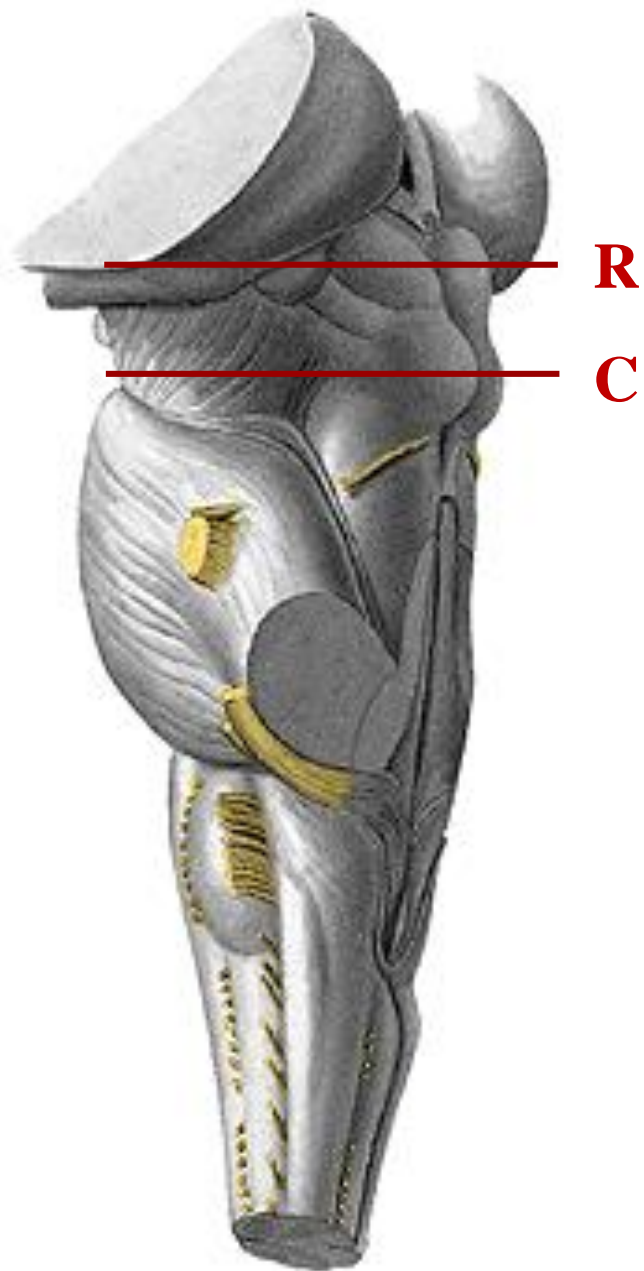
Mesencephalon

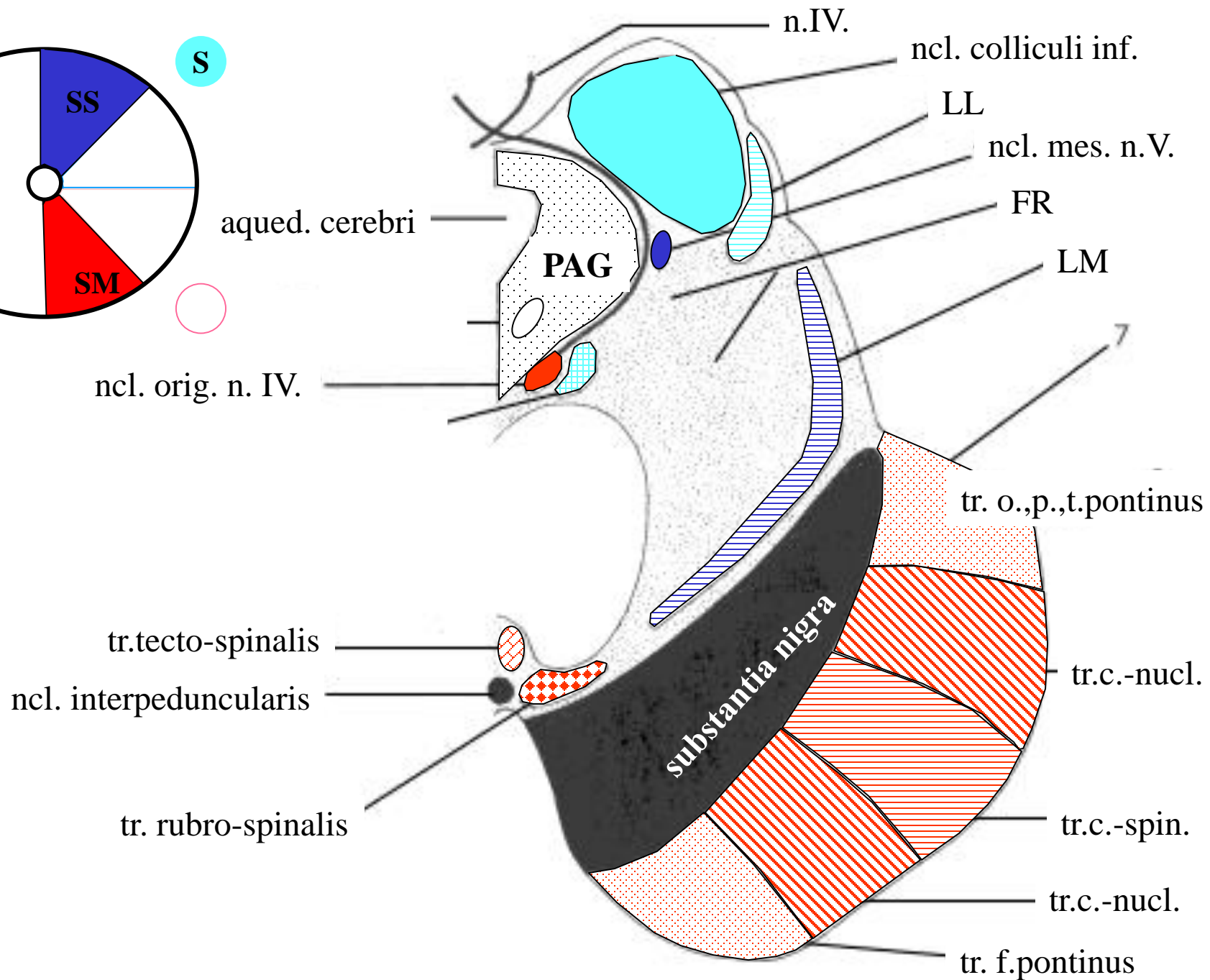
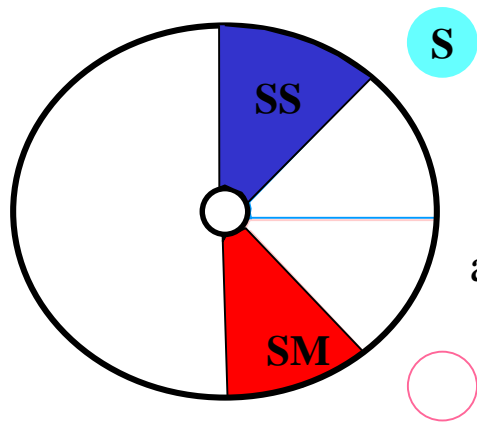


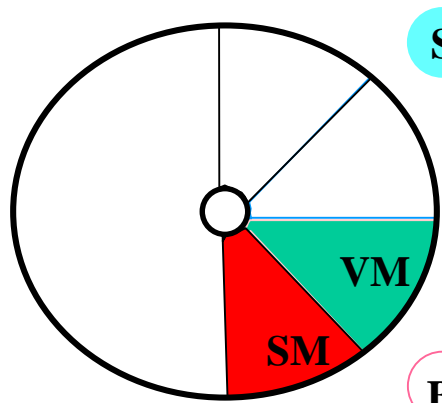
(a) Midsagittal section



Mesencephalon – representative sections







S

BM

aqued. cerebri

ncl. colliculi sup.

PAG

LL

ncl. E.W.

LM

ncl. orig. n. III.

FR

tr. tecto-spinalis

tr. rubro-spinalis

n. III.

4

5

6

