

Cardiovascular system

1

CARDIOVASCULAR SYSTEM COMPOSITION

HEART (COR)

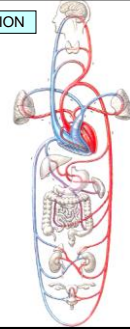
VESSELS (VASA)

BLOOD (SANGUIS)

SYSTEMIC BLOOD CIRCULATION

PULMONAR BLOOD CIRCULATION

PORTAL BLOOD CIRCULATION

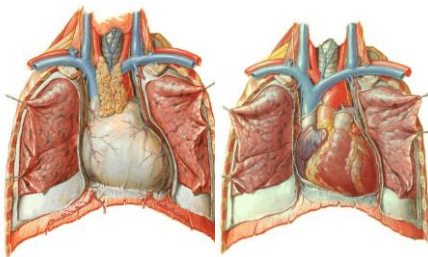


2

COR (HEART)

270-320 g

2/3 left, 1/3 right



3

HEART DIVISION

Septum cordis (interatriale, interventriculare)

Septum atrioventriculare dx., sin.

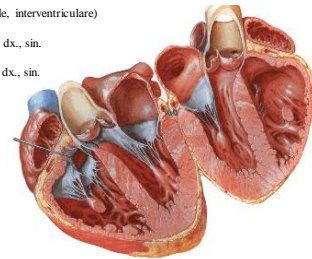
Ostium atrioventriculare dx., sin.

Valva tricuspidalis

Valva bicuspidalis

Atrium dx. et sin.

Ventriculus dx. et sin.



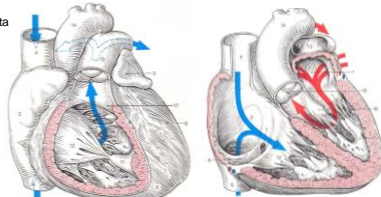
4

Vena cava sup. et inf.

Truncus pulmonalis

Vv. pulmonales

Aorta



5

SURFACE OF HEART

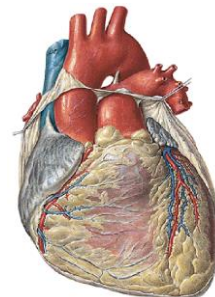
Basis cordis

Apex cordis

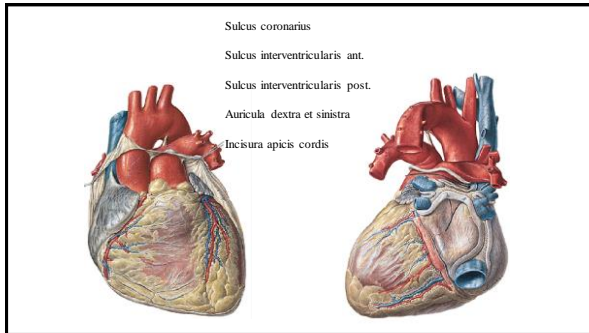
Facies sternocostalis (ant.)

Facies diaphragmatica (post.)

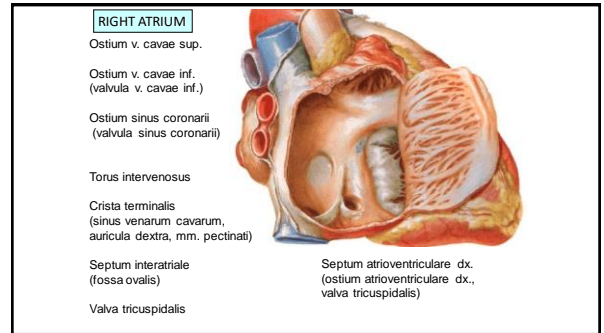
Margo acutus (dexter)

Margo obtusus (sinister)
= facies pulmonalis

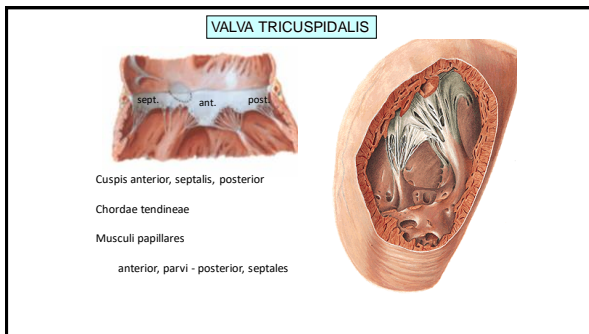
6



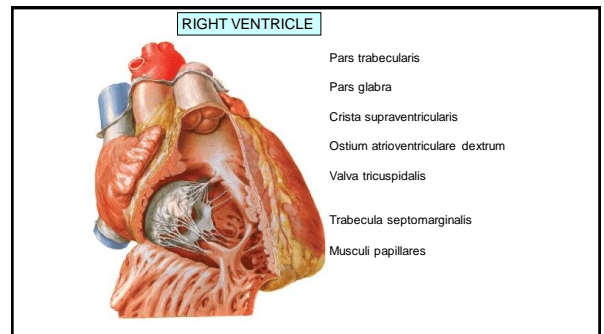
7



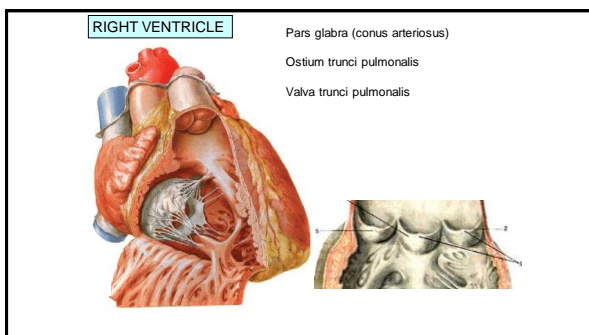
8



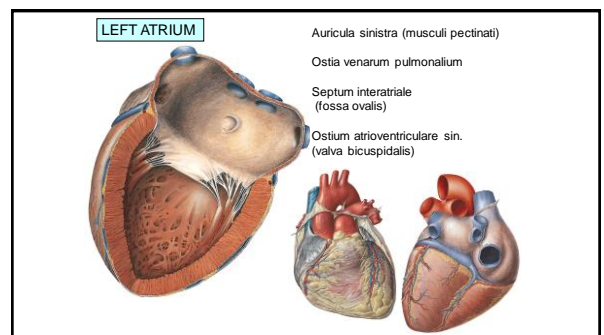
9



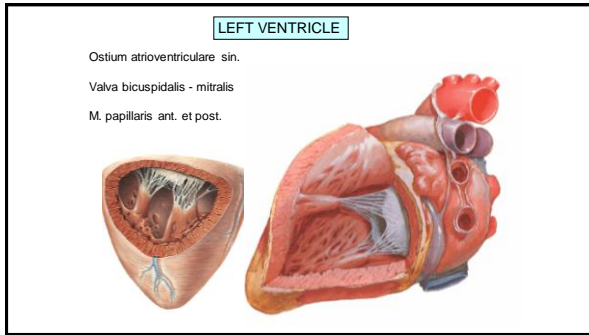
10



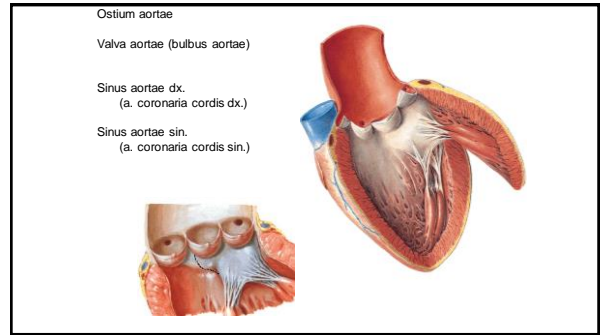
11



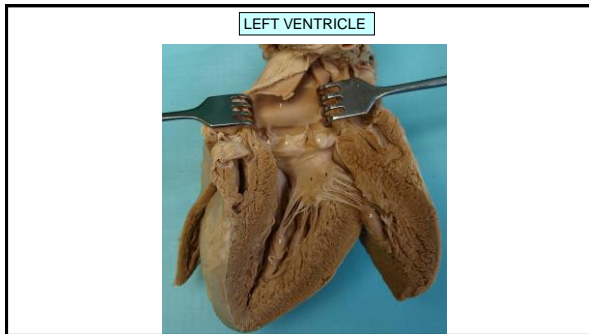
12



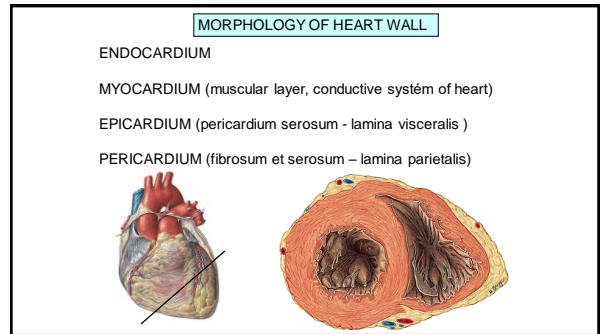
13



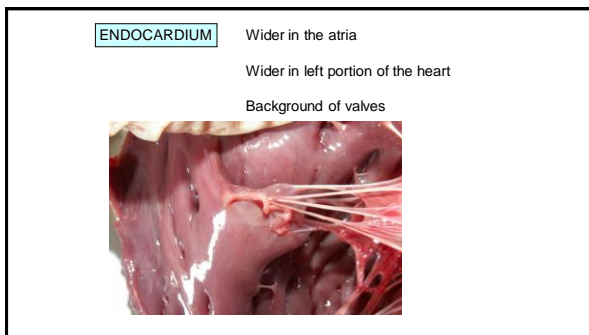
14



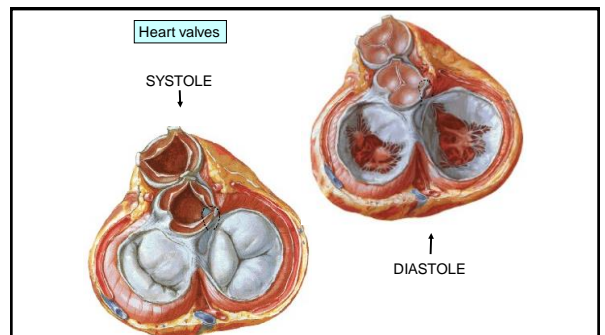
15



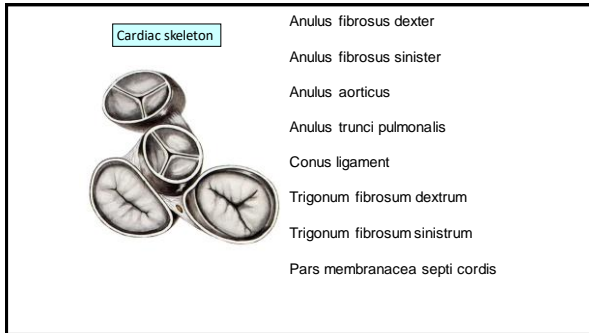
16



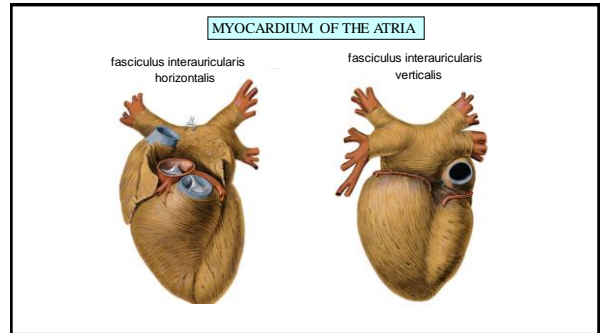
17



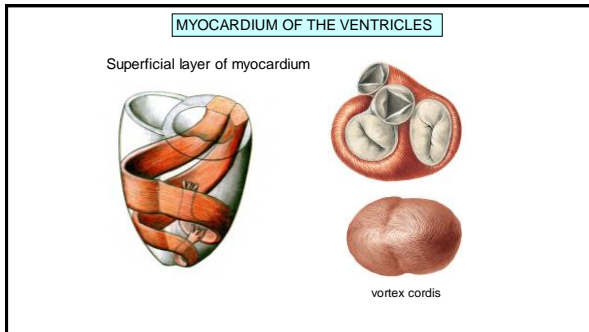
18



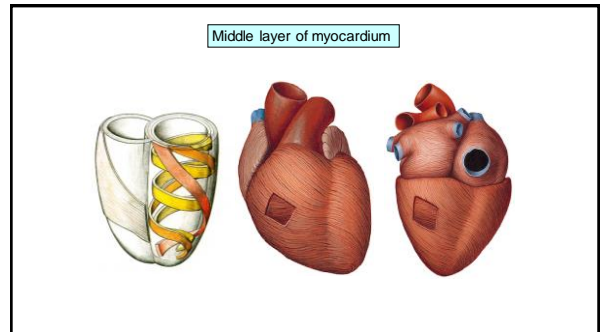
19



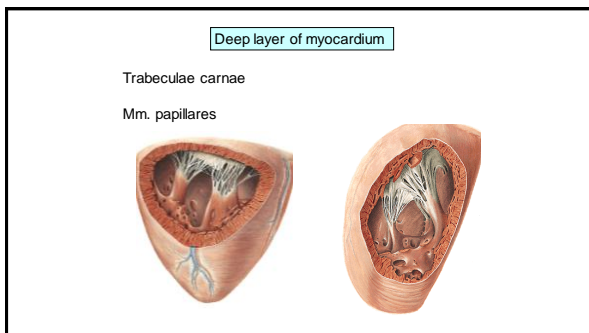
20



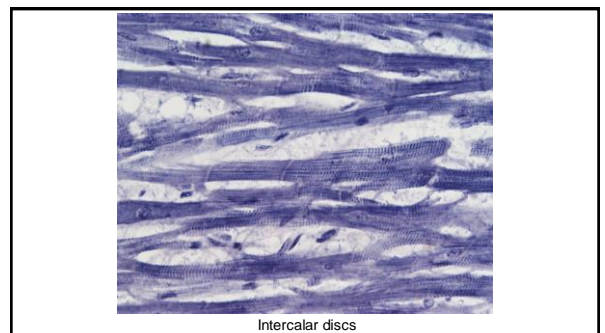
21



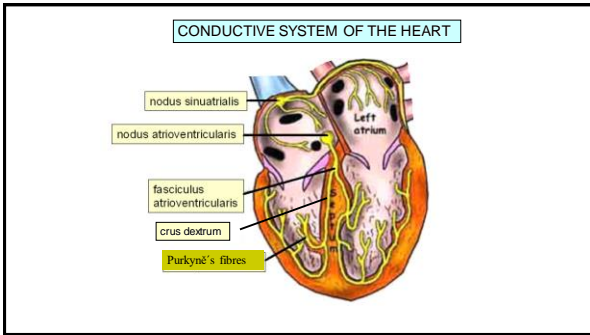
22



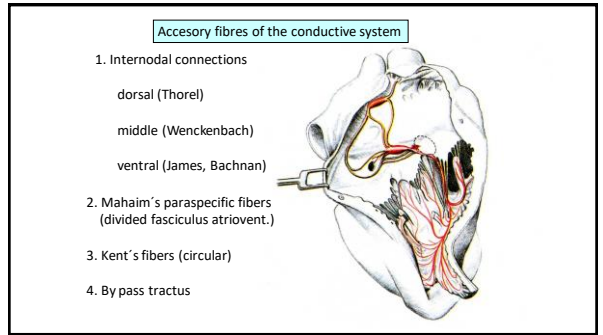
23



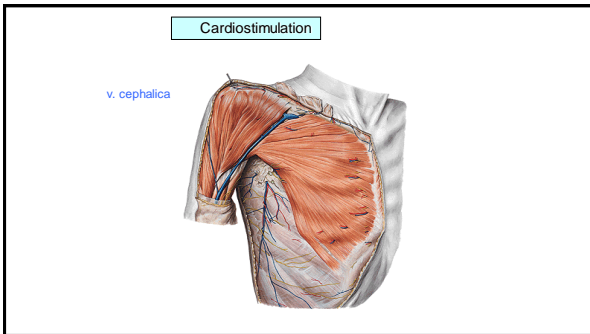
24



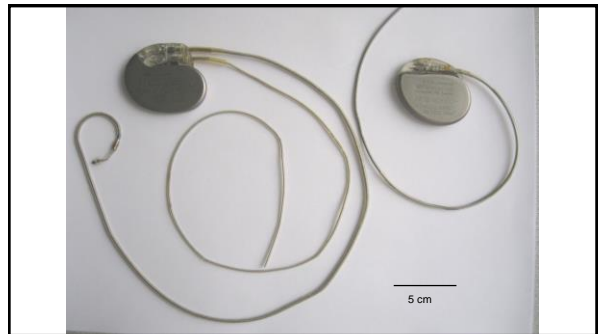
25



26



27



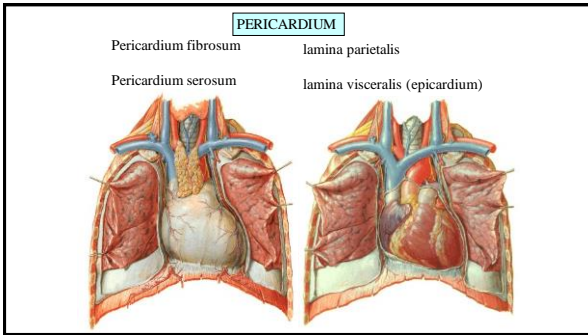
28



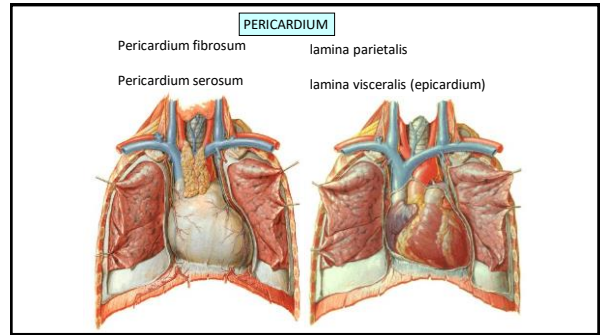
29



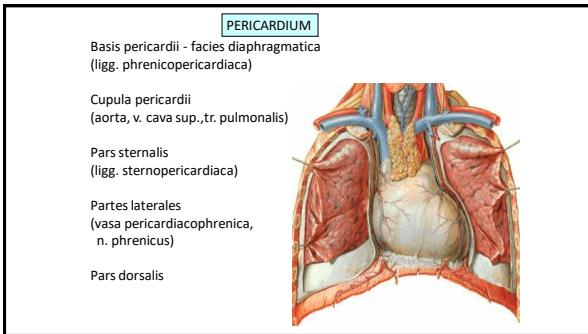
30



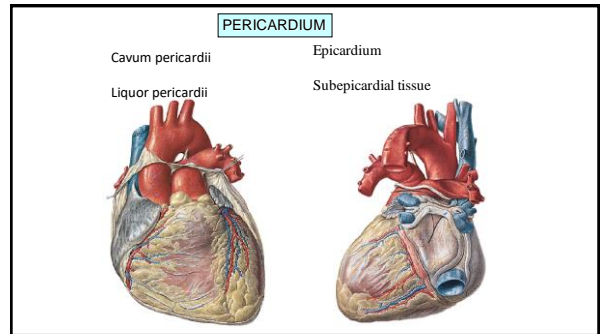
31



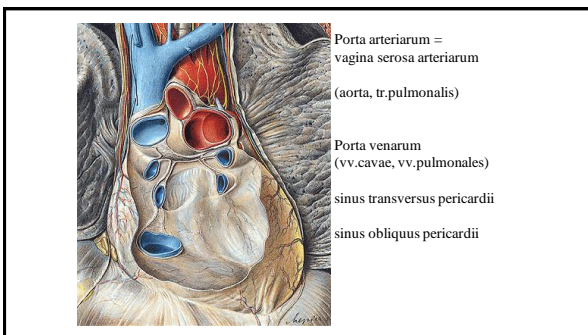
32



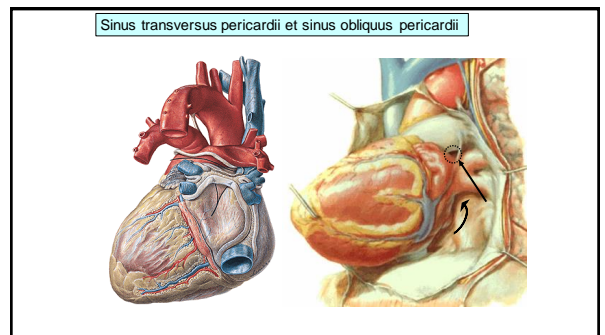
33



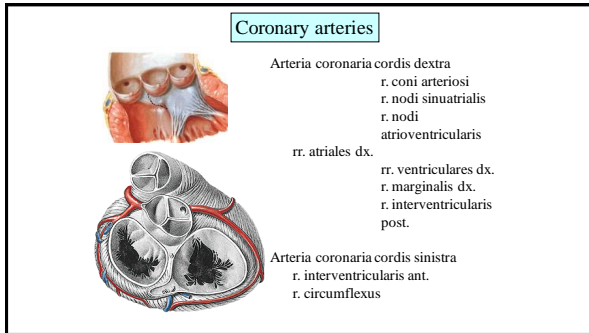
34



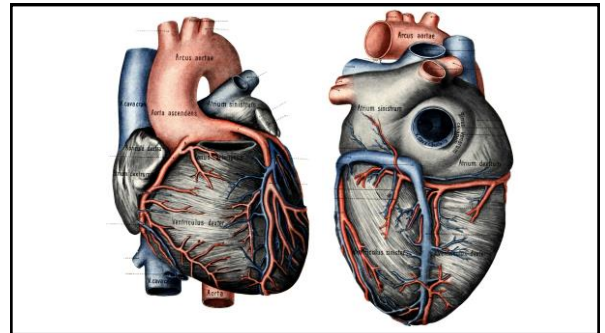
35



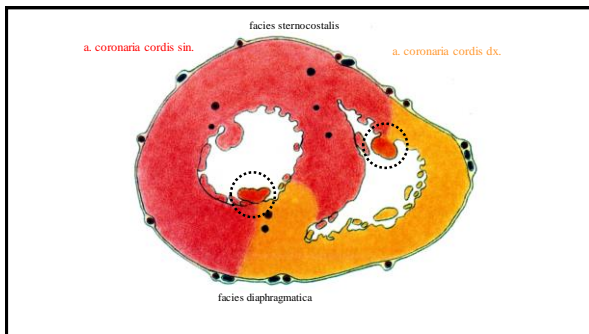
36



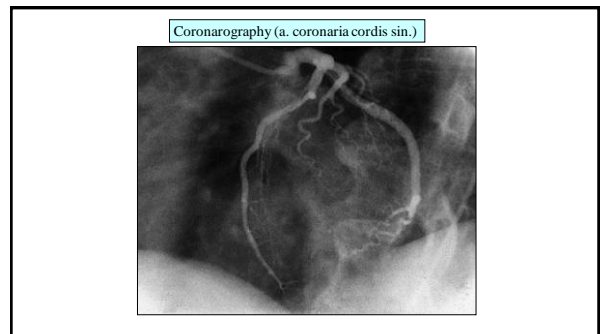
37



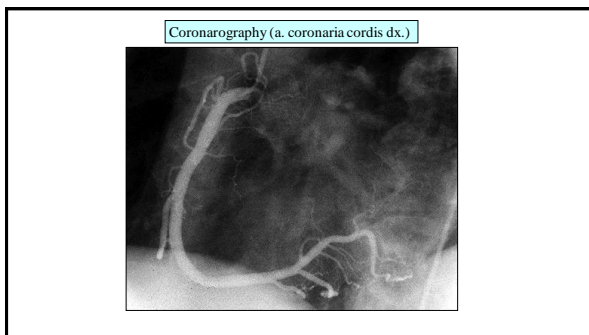
38



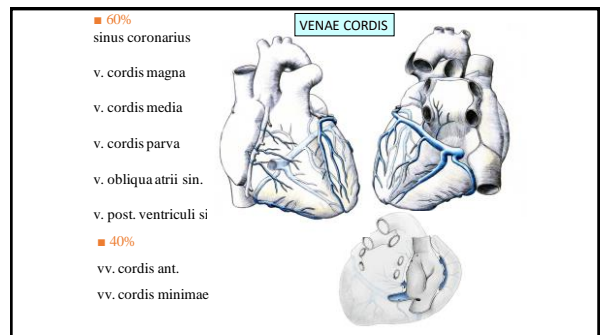
39



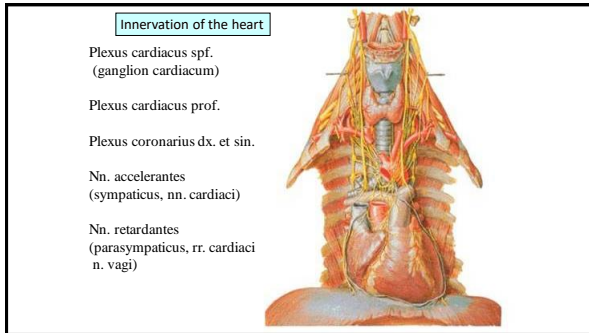
40



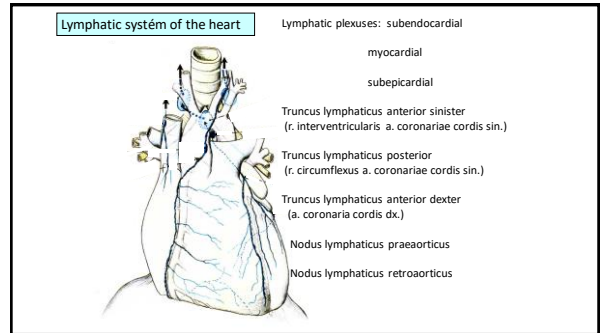
41



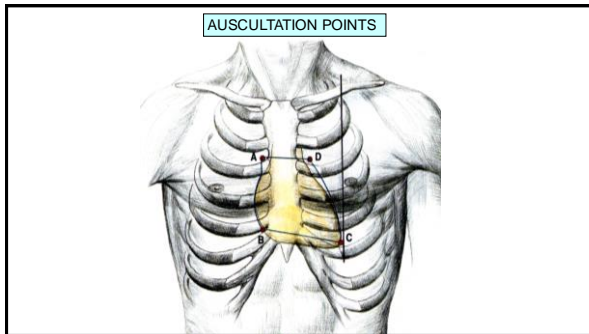
42



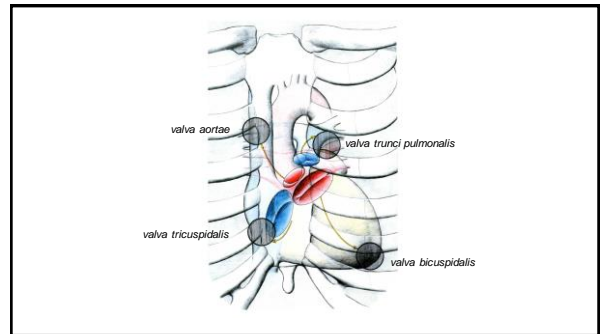
43



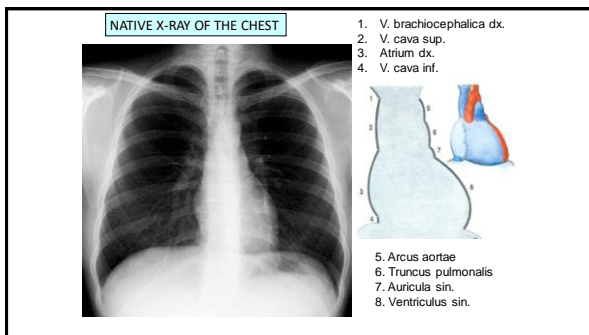
44



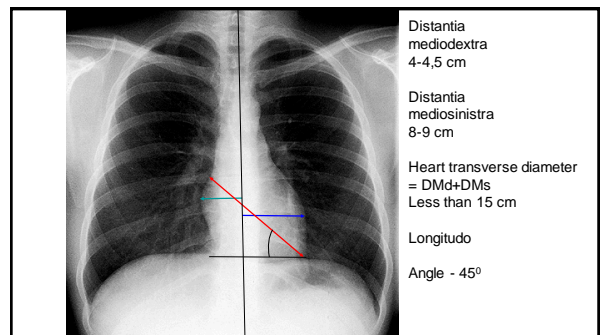
45



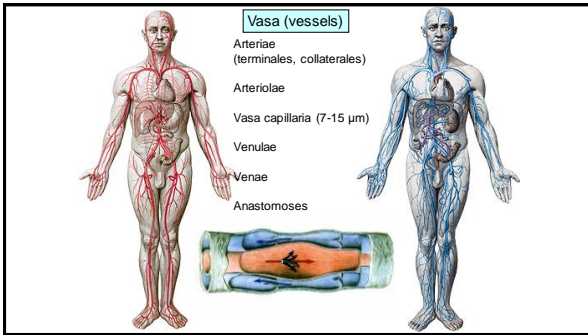
46



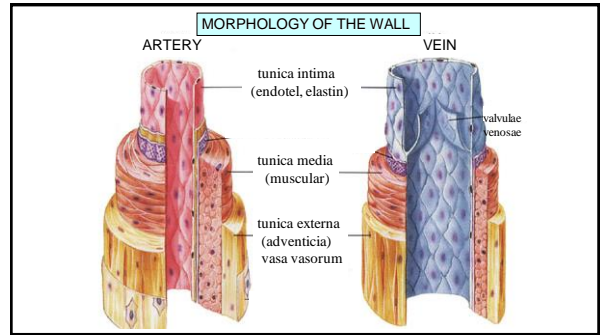
47



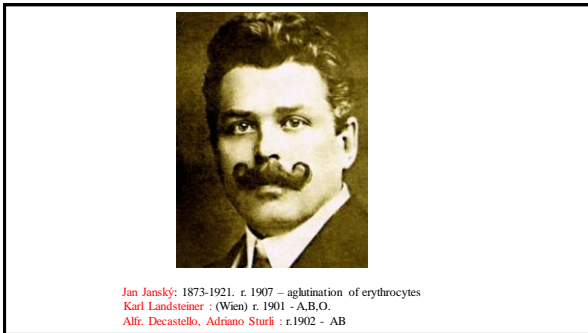
48



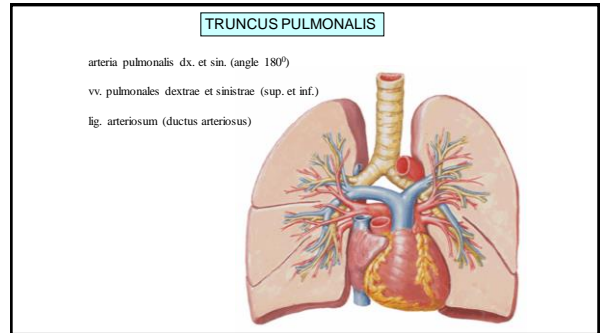
49



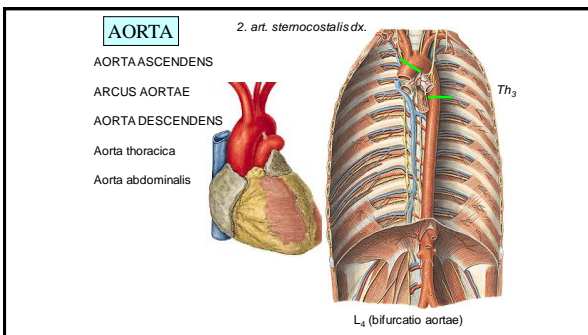
50



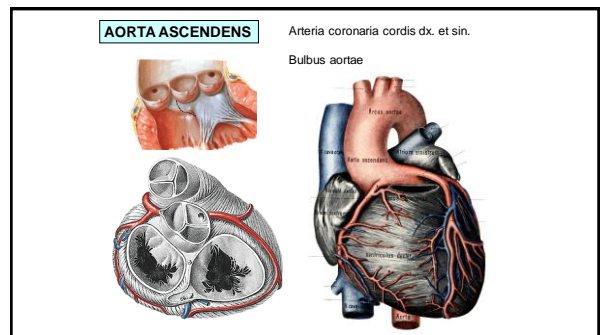
51



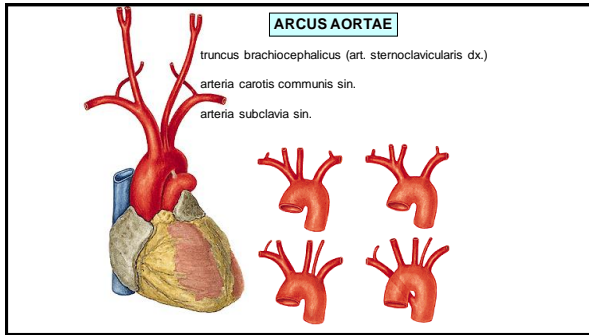
52



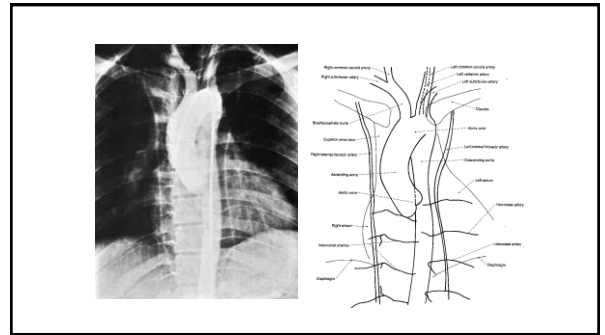
53



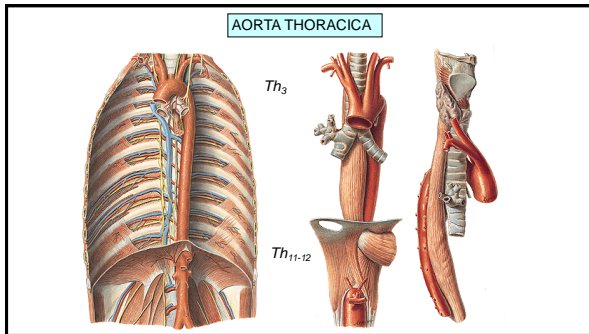
54



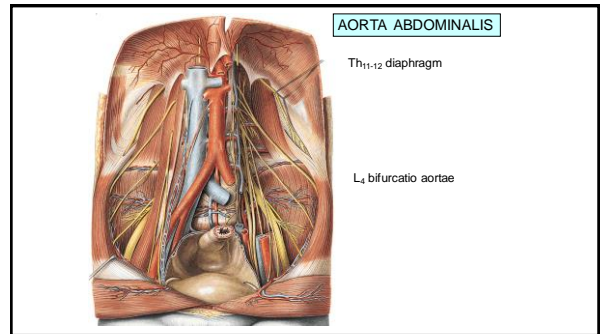
55



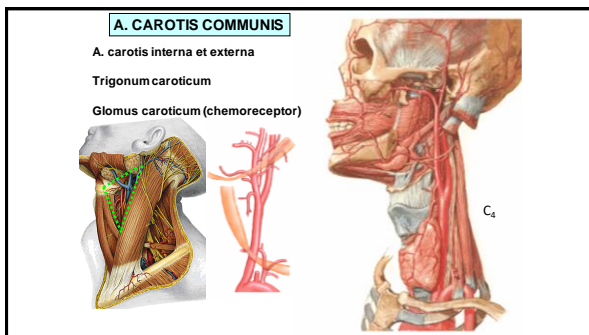
56



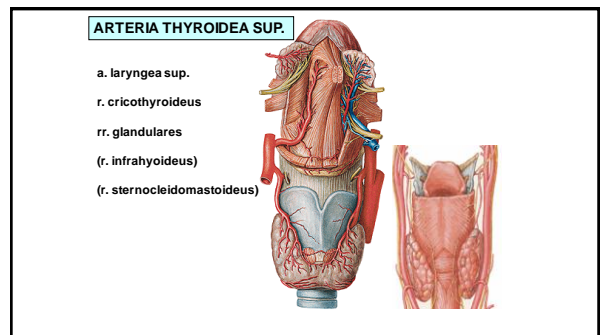
57



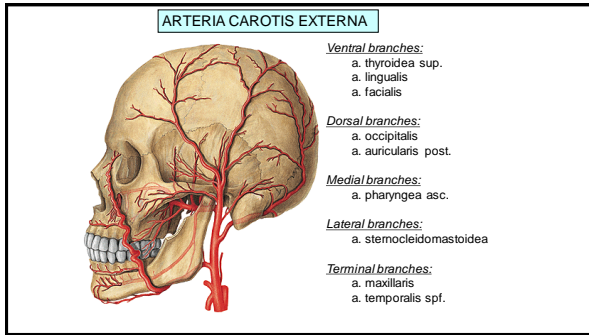
58



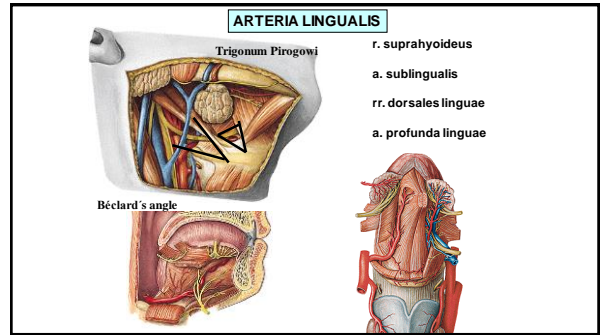
59



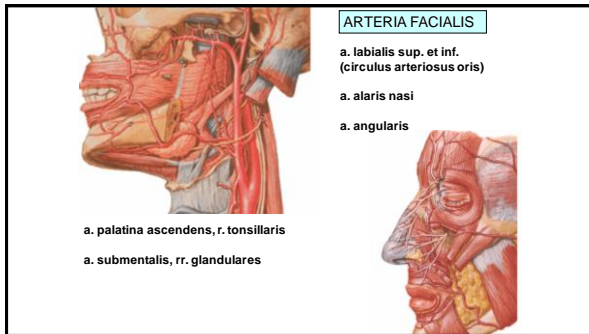
60



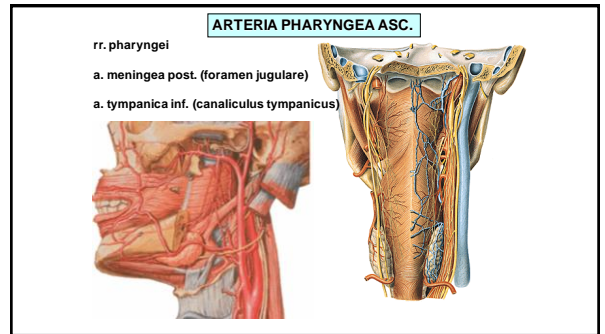
61



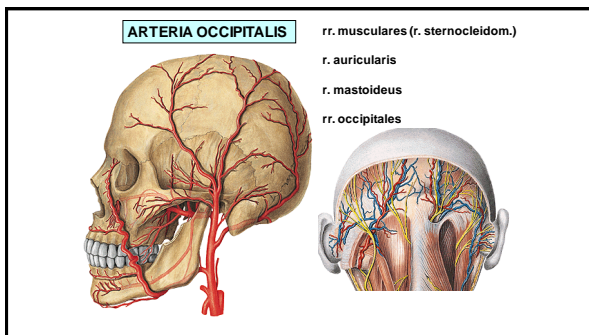
62



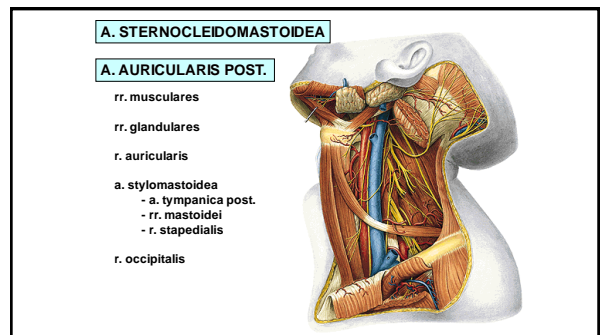
63



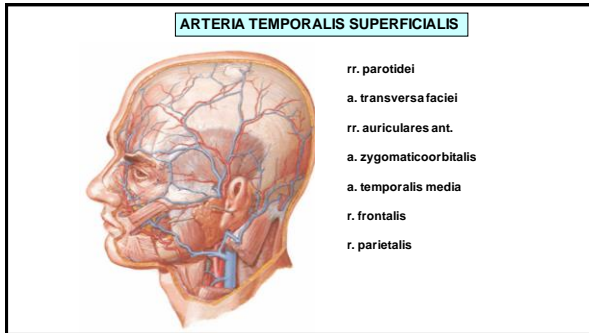
64



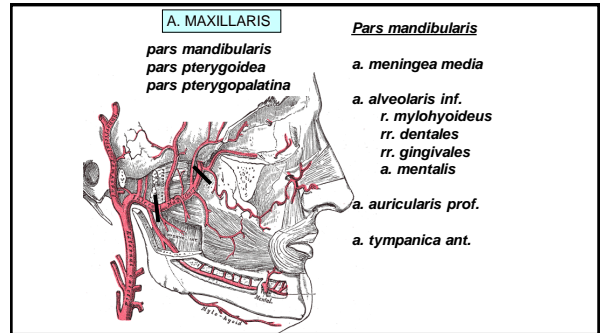
65



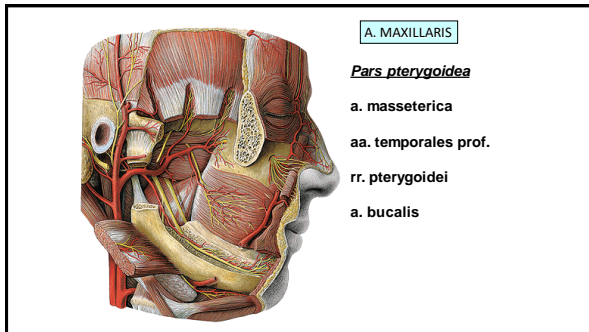
66



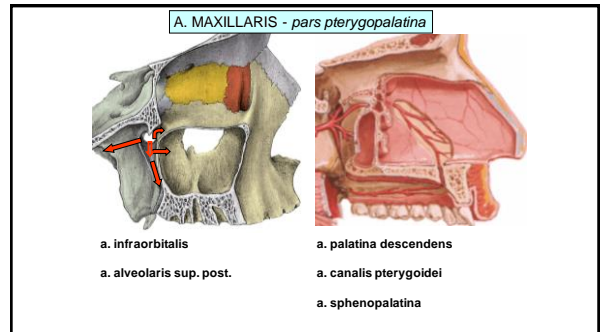
67



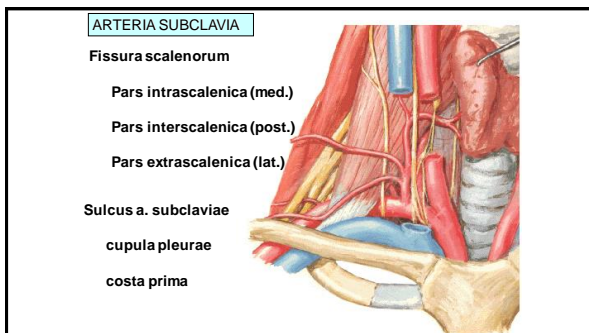
68



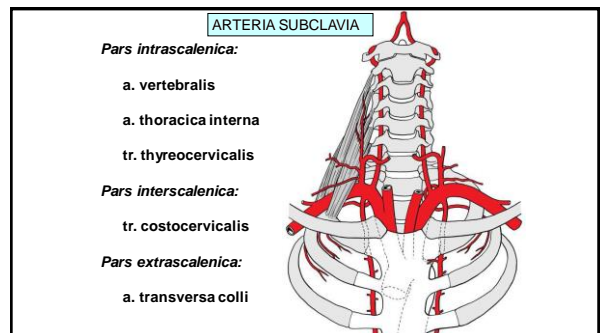
69



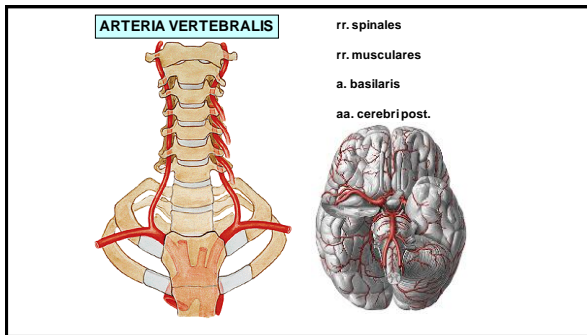
70



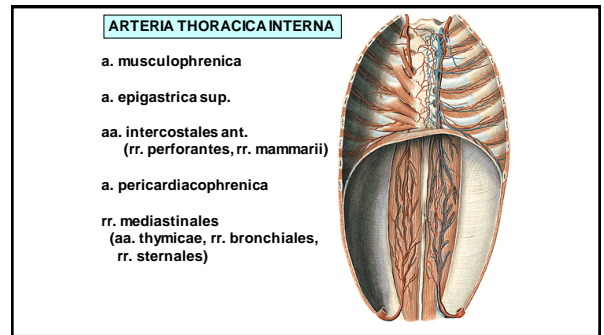
71



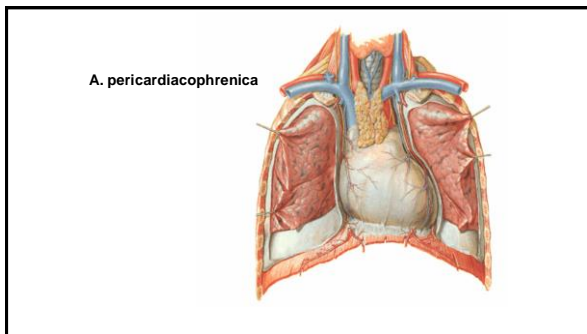
72



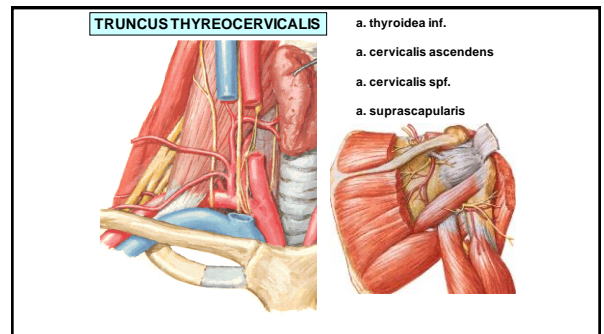
73



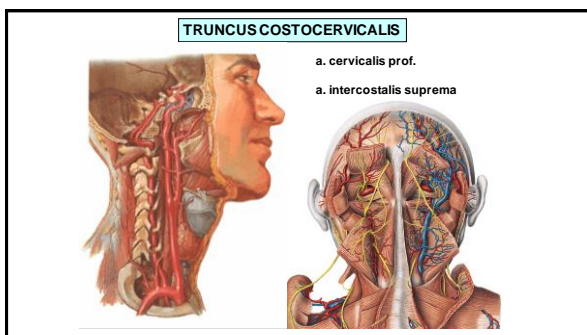
74



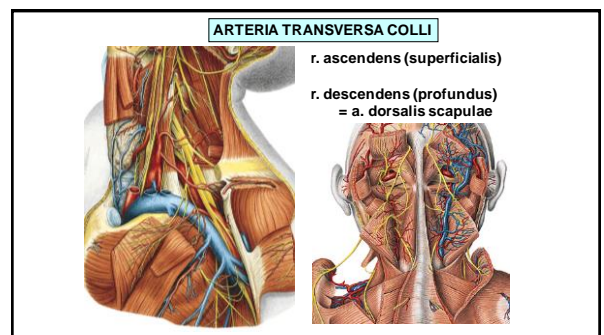
75



76



77



78

References:

Putz, R. (2008):
Atlas of Human Anatomy Sobotta. Elsevier Books.

Keith L. Moore, Arthur F. Dalley (2005):
Clinically Oriented Anatomy. Williams and Wilkins.

Platzer, W., Kahle, W., Leonhardt H. (1992):
Locomotor system. Georg Thieme Verlag, Stuttgart,
New York, 4th edition.

Čihák, R. (1987):
Anatomie 1. Avicenum, Zdravotnické nakladatelství.

Netter, F. H. (1997):
Interactive Atlas of Clinical Anatomy. Novartis, USA.