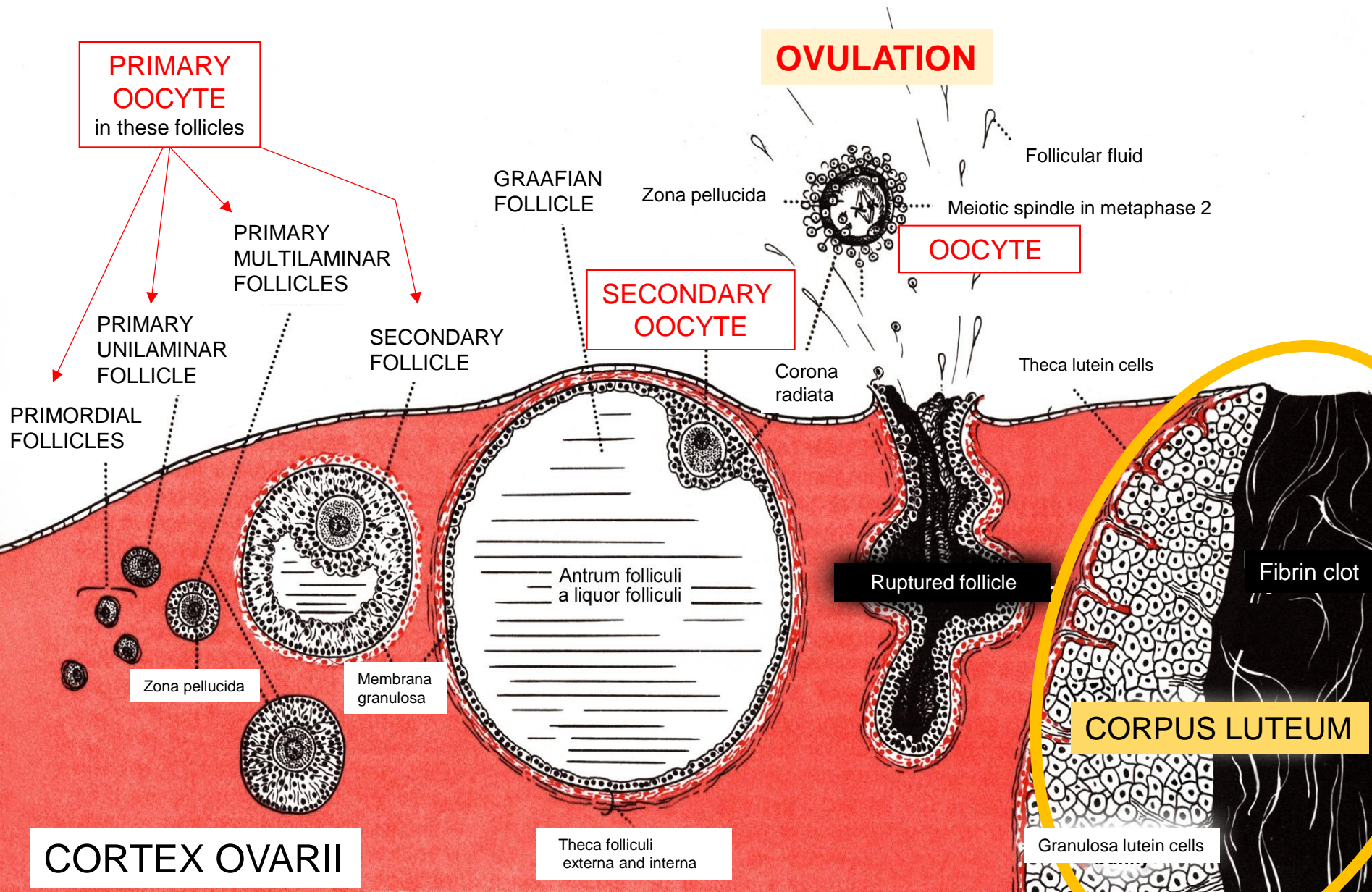




EMBRYOLOGY

- Implantation.
- Changes in blastocyst during implantation.
- Differentiation of embryoblast.
- Development of the extraembryonic structures - extraembryonic mesoderm, extraembryonic coelom, yolk sac, fetal membranes: amnion and chorion. Development of the placenta.
- Germ disc. Development of embryonic mesoderm and notochord. Somites. The other axial organs of embryo.
- Flexion of embryo. Development of the umbilical cord.

GROWTH AND MATURATION OF OVARIAN FOLLICLES



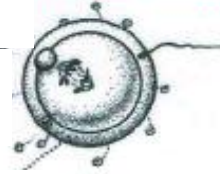
FERTILIZATION AND IMPLANTATION

oocyte II



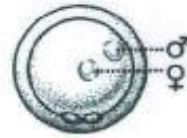
cumulus oophorus

sperm penetration



polar body
meiotic spindle
zona pellucida

ovum



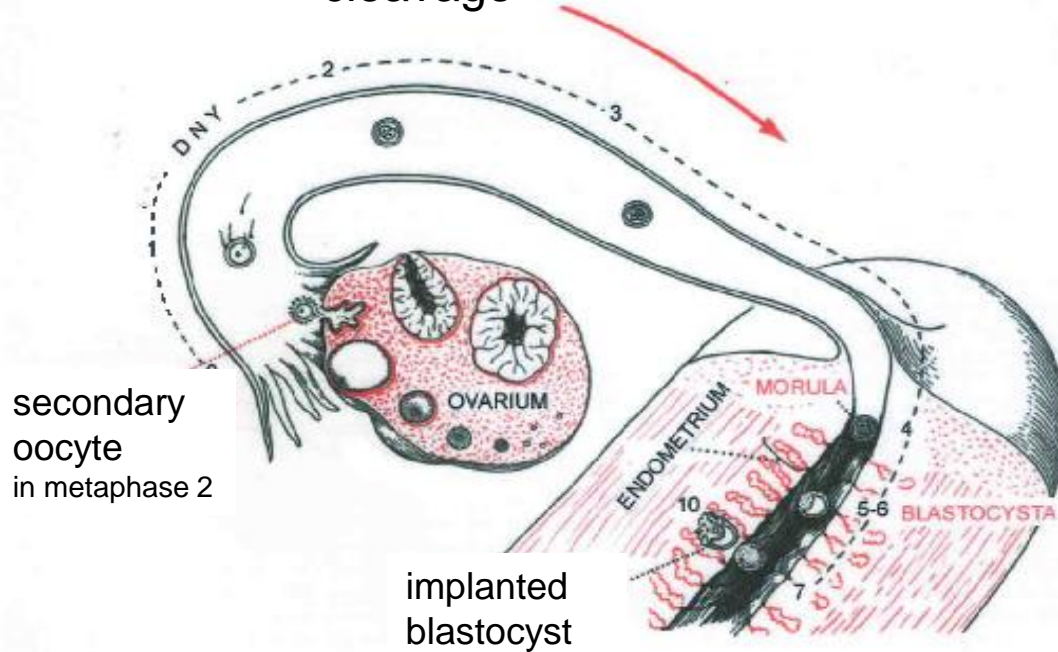
pronuclei

beginning of cleavage



diploid set of chromosomes

cleavage



implanted blastocyst

FERTILIZATION

Zygote

– 18 h after fertilization



24 h



45 h



72 h

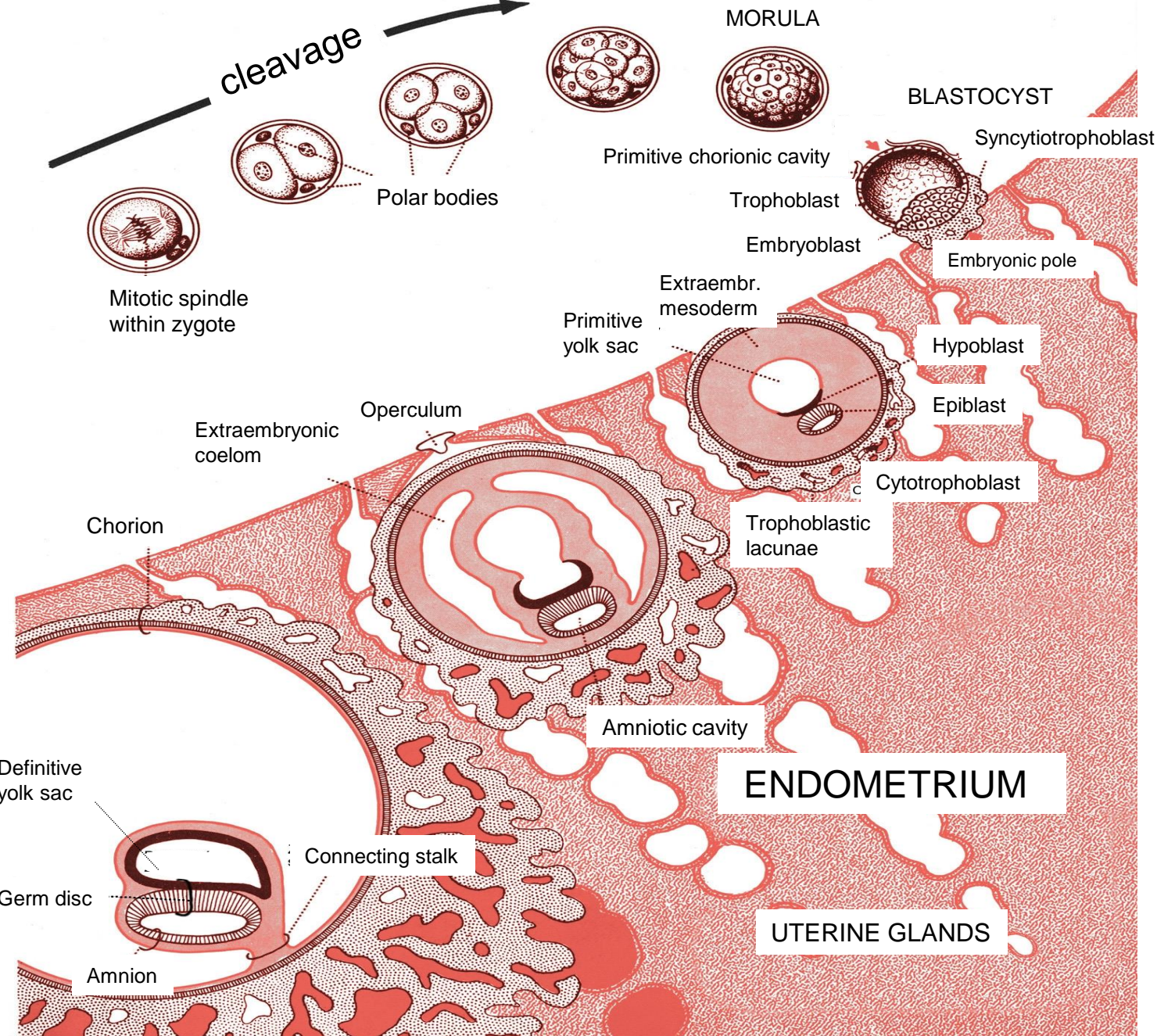


Morula – 96 h

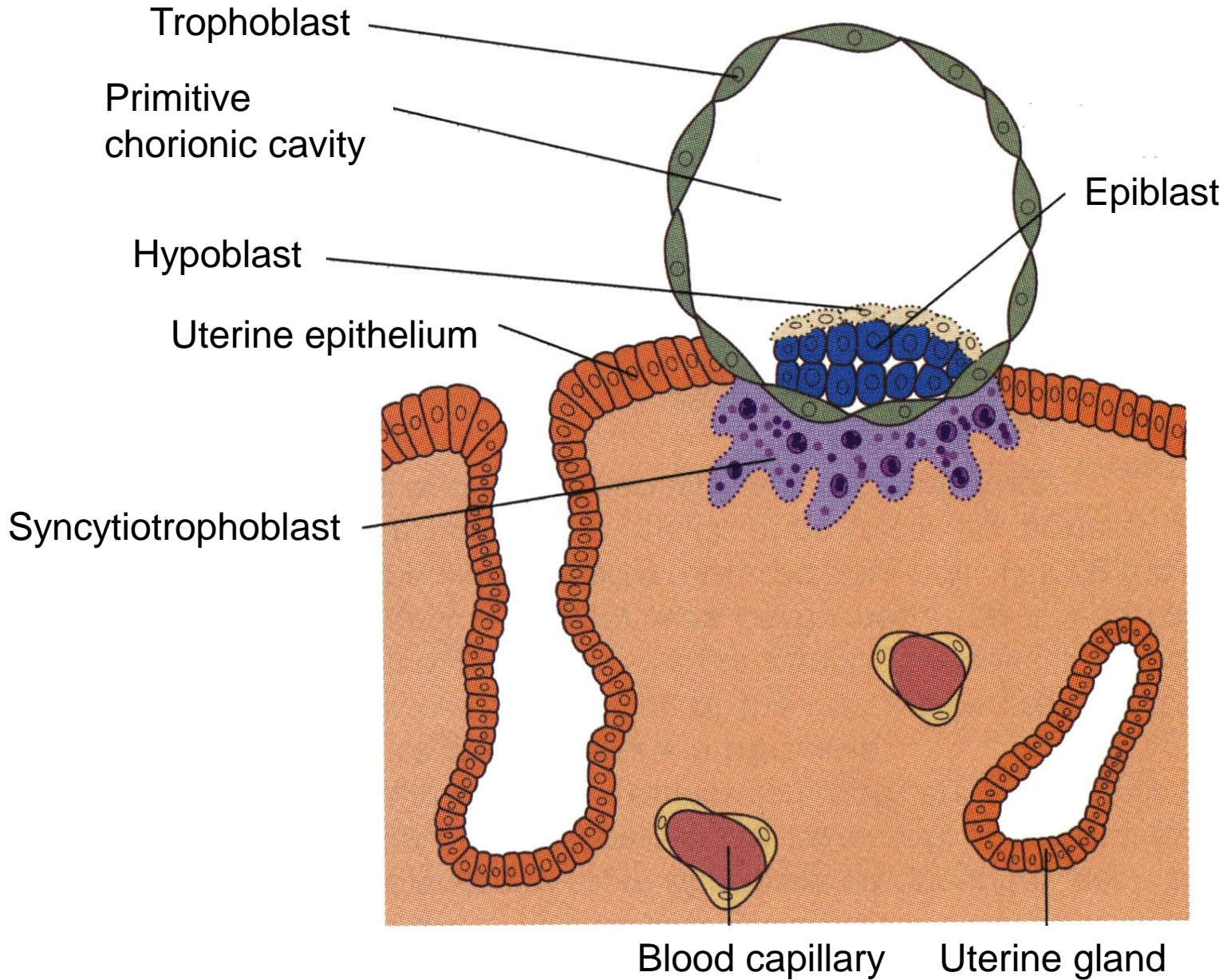


Blastocyst

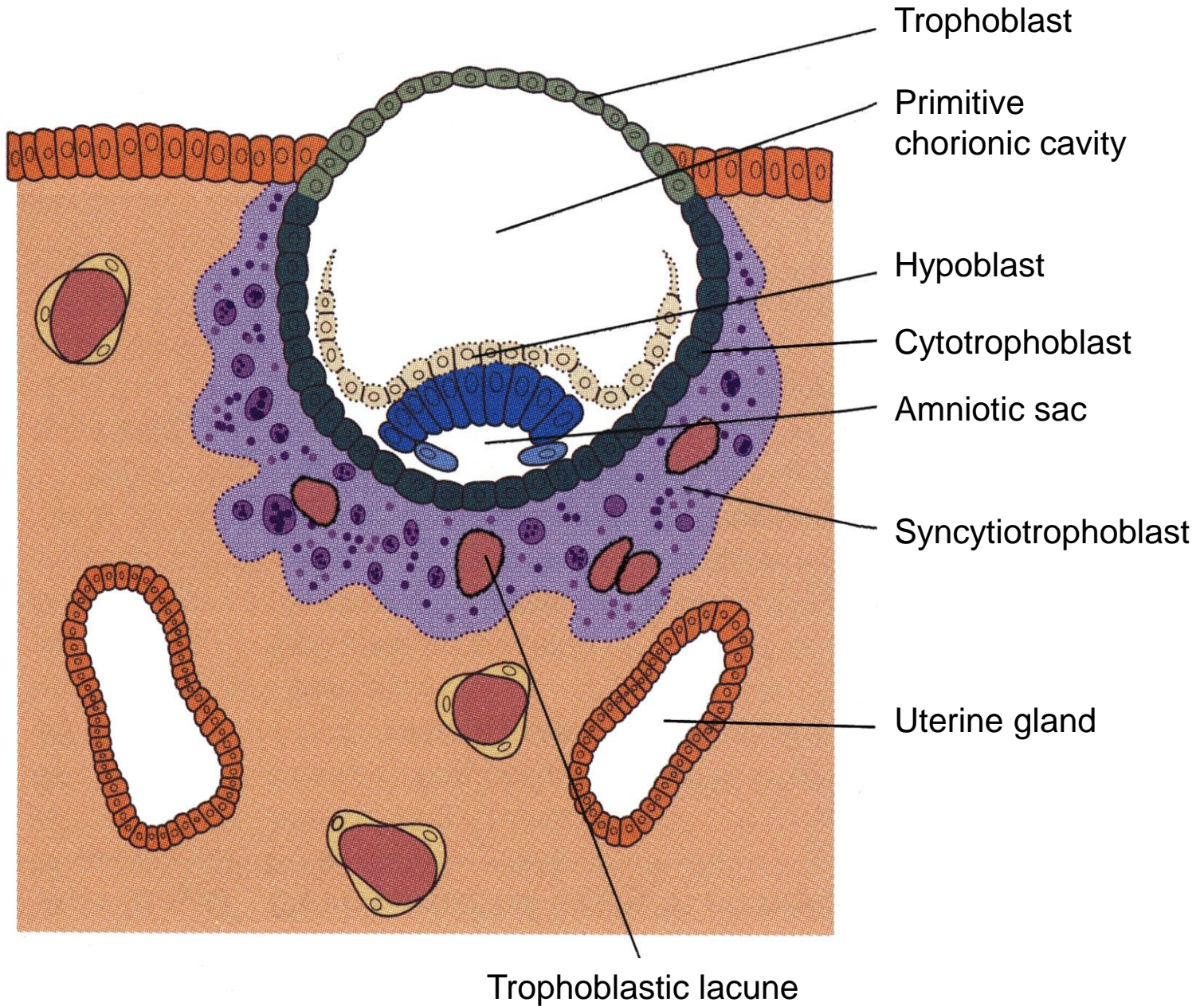
CLEAVAGE AND IMPLANTATION



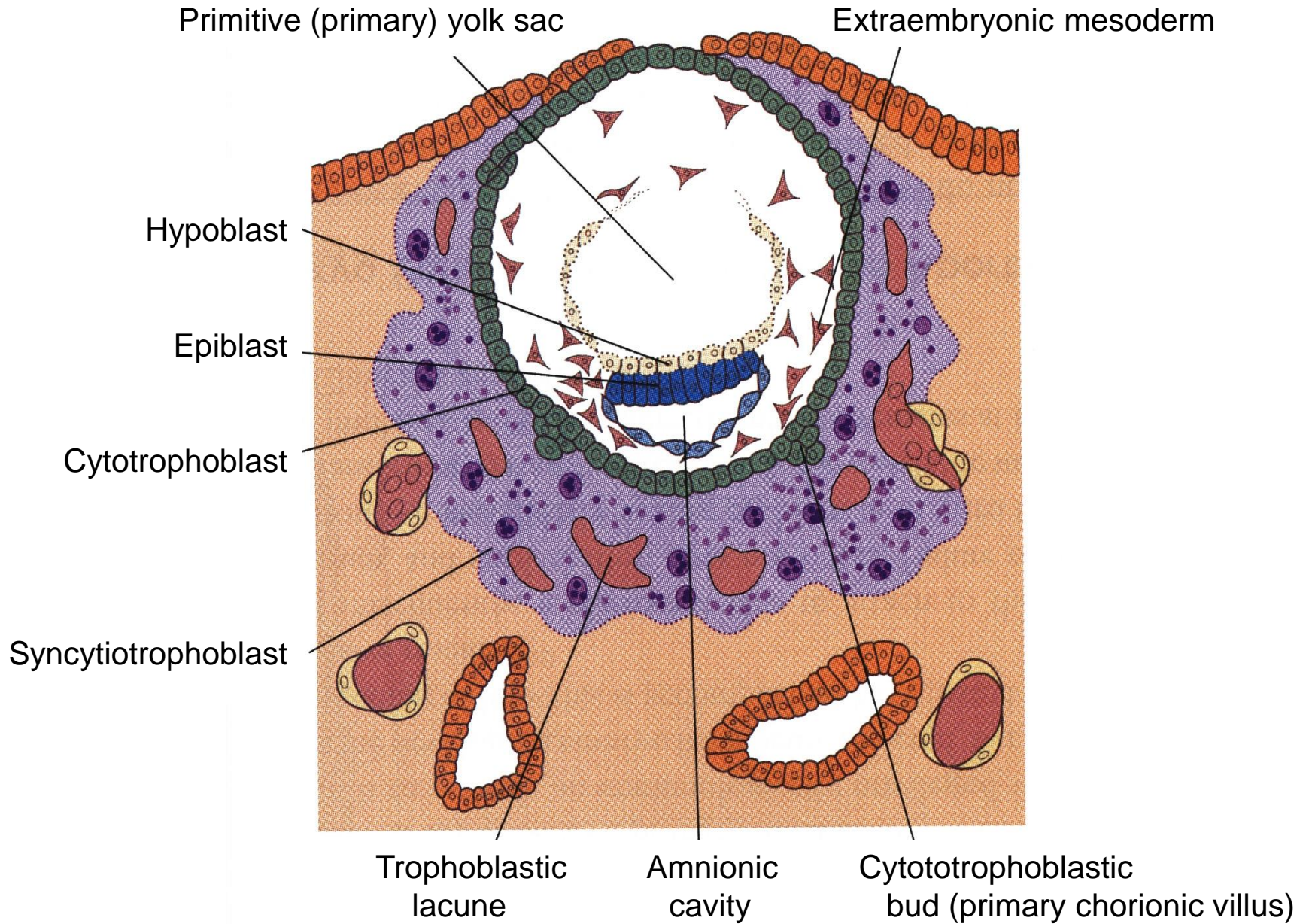
IMPLANTATION – DAY 7



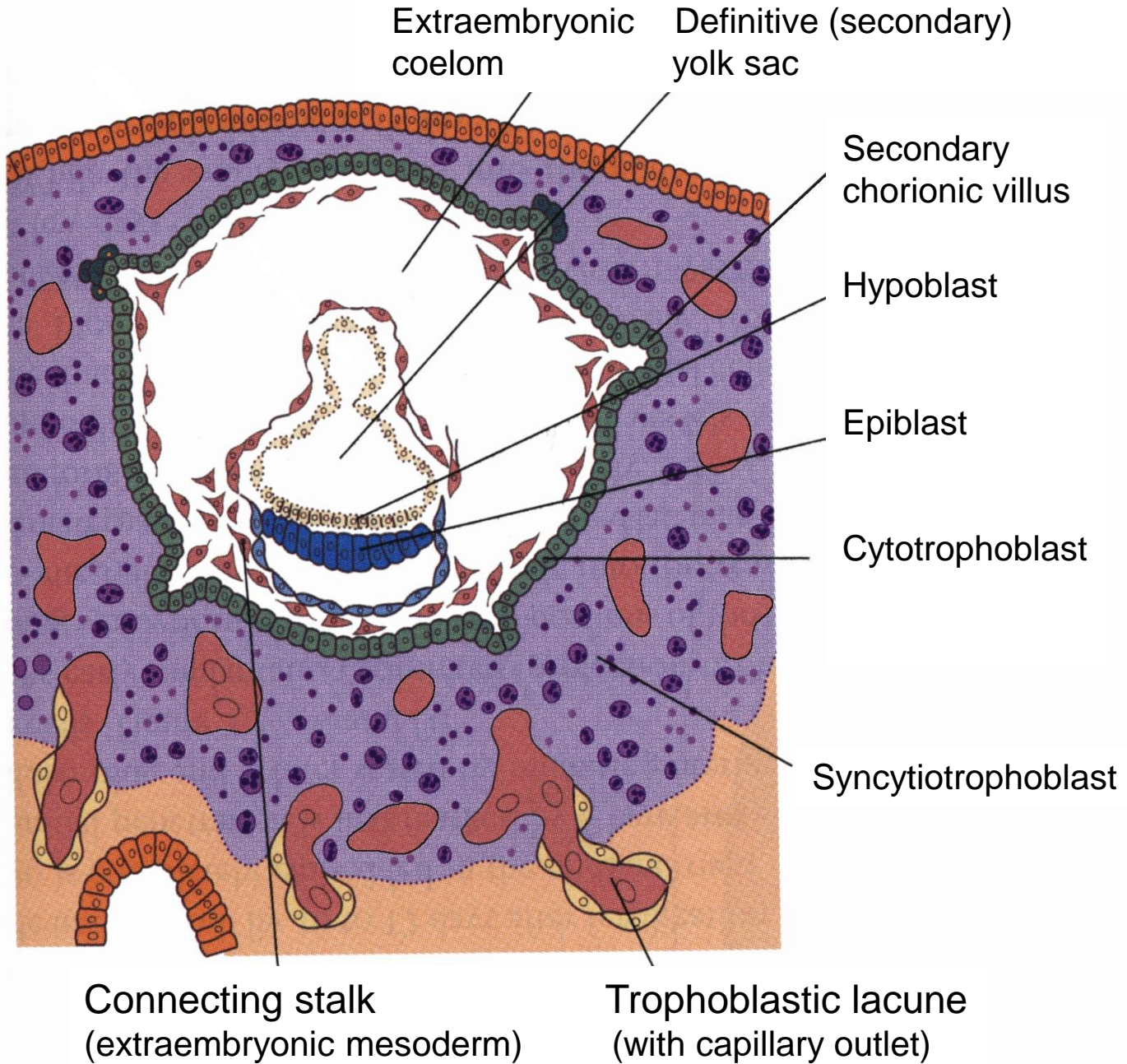
IMPLANTATION – DAY 8 1/2



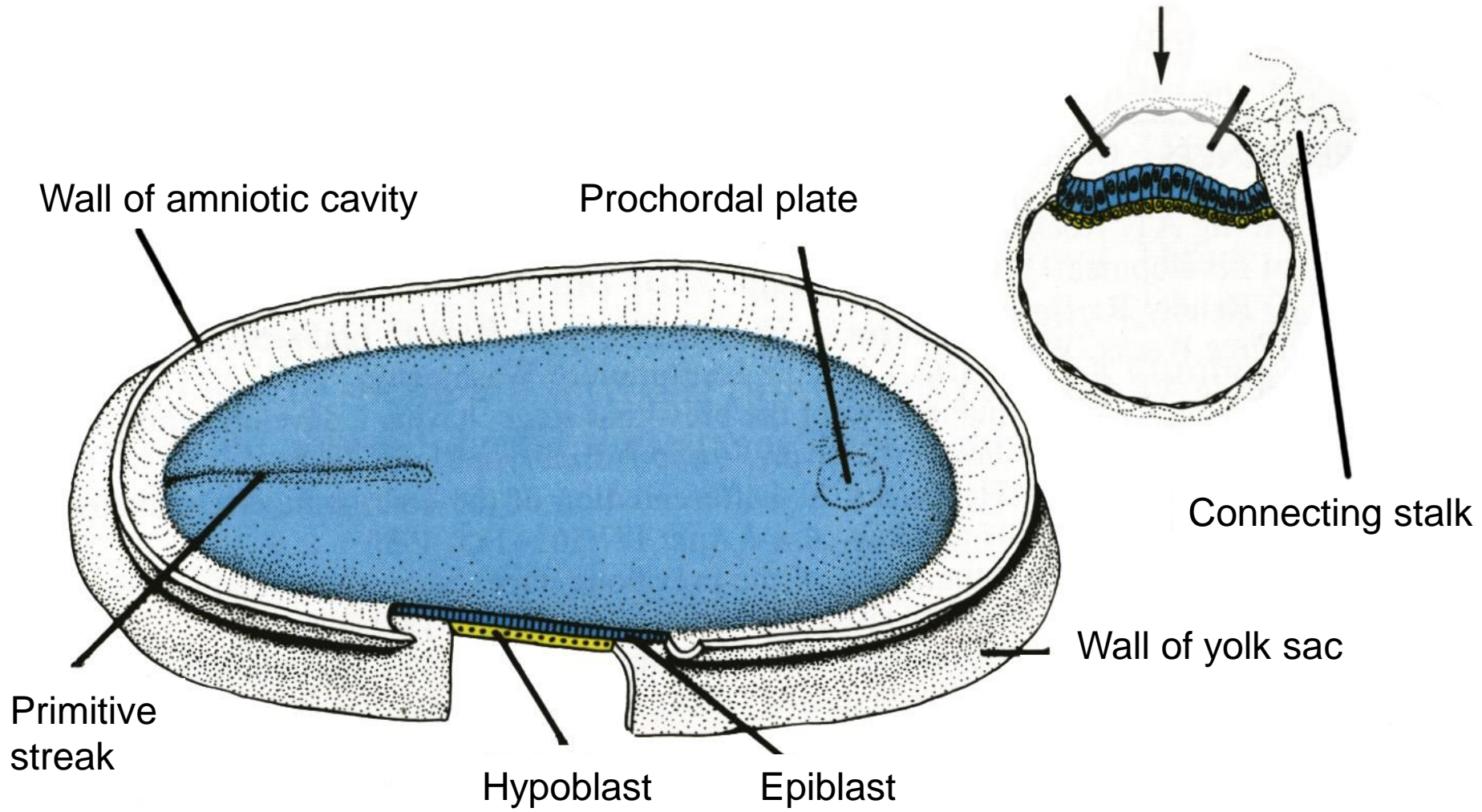
IMPLANTATION – DAY 10



IMPLANTATION – DAY 13

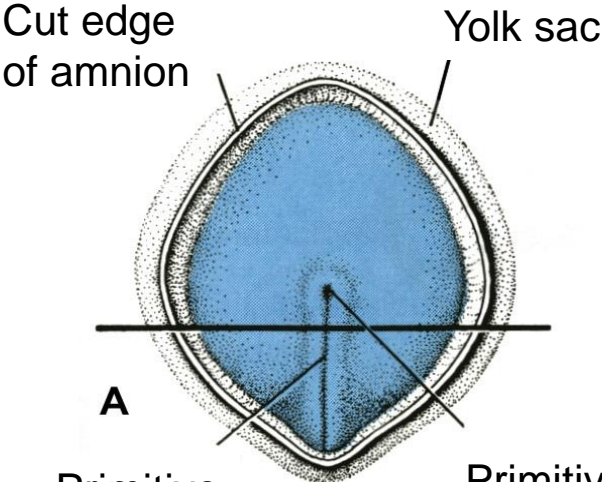


DORSAL SIDE OF GERM DISC – DAY 14

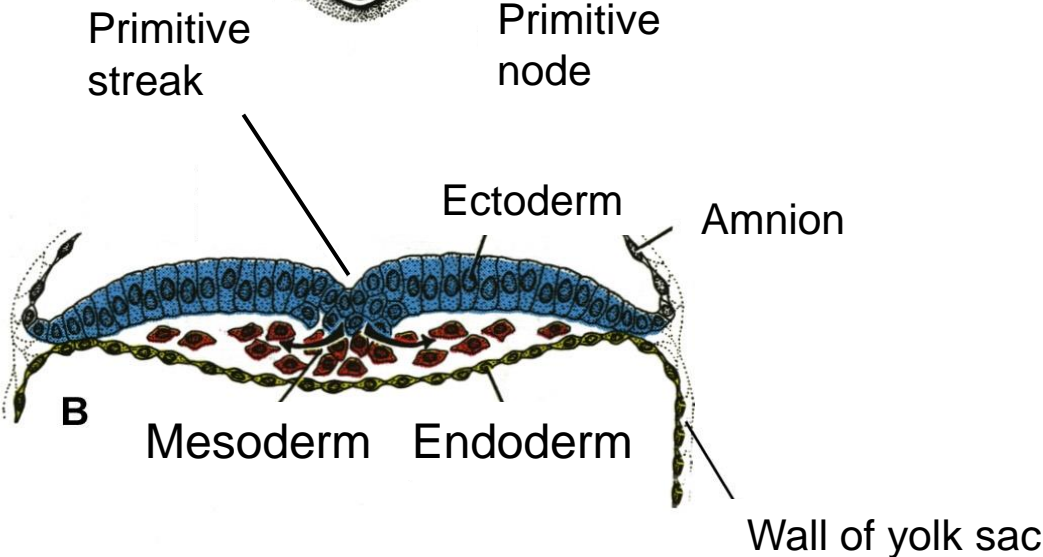


GERM DISC - DAY 16

A – view on dorsal side:



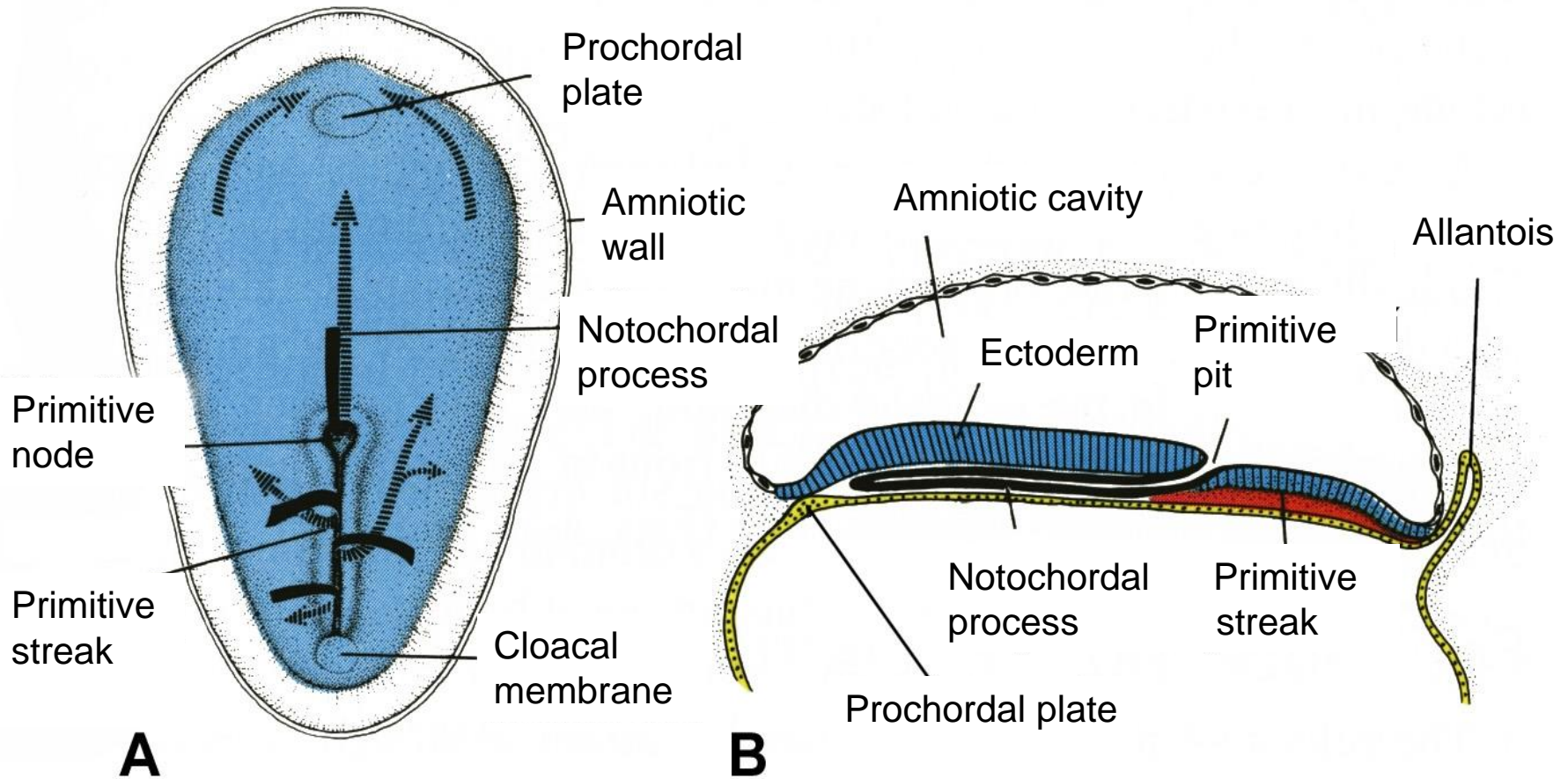
B – transverse section through germ disc:



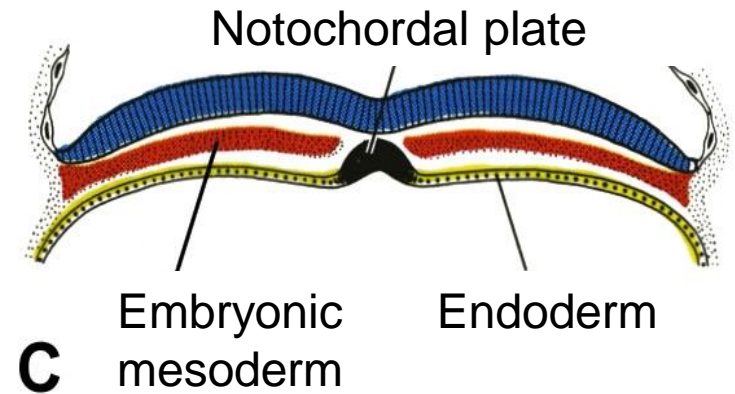
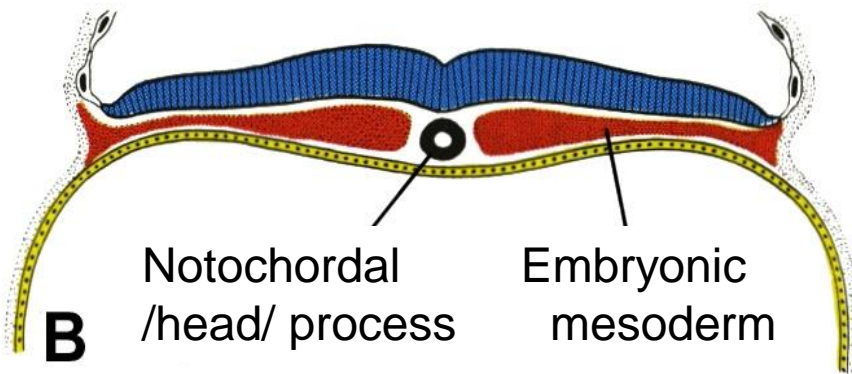
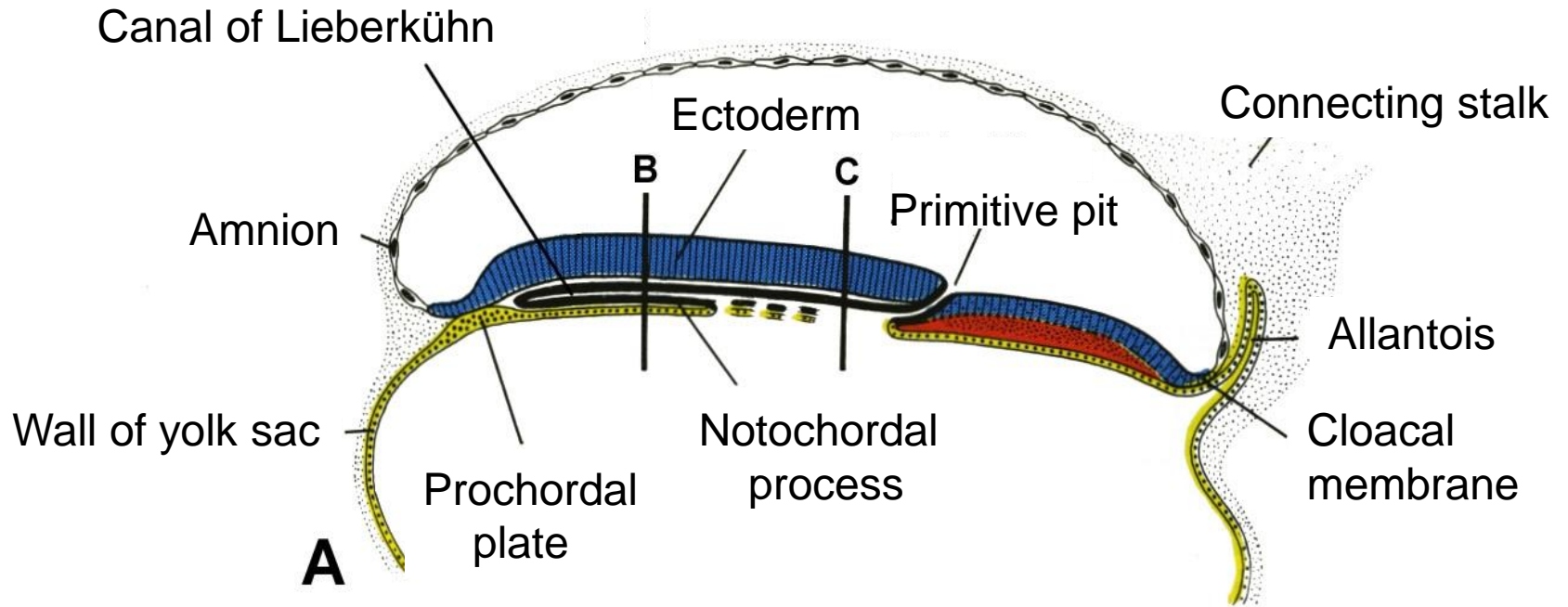
GERM DISC - DAY 16

A – view on dorsal side

B – longitudinal section

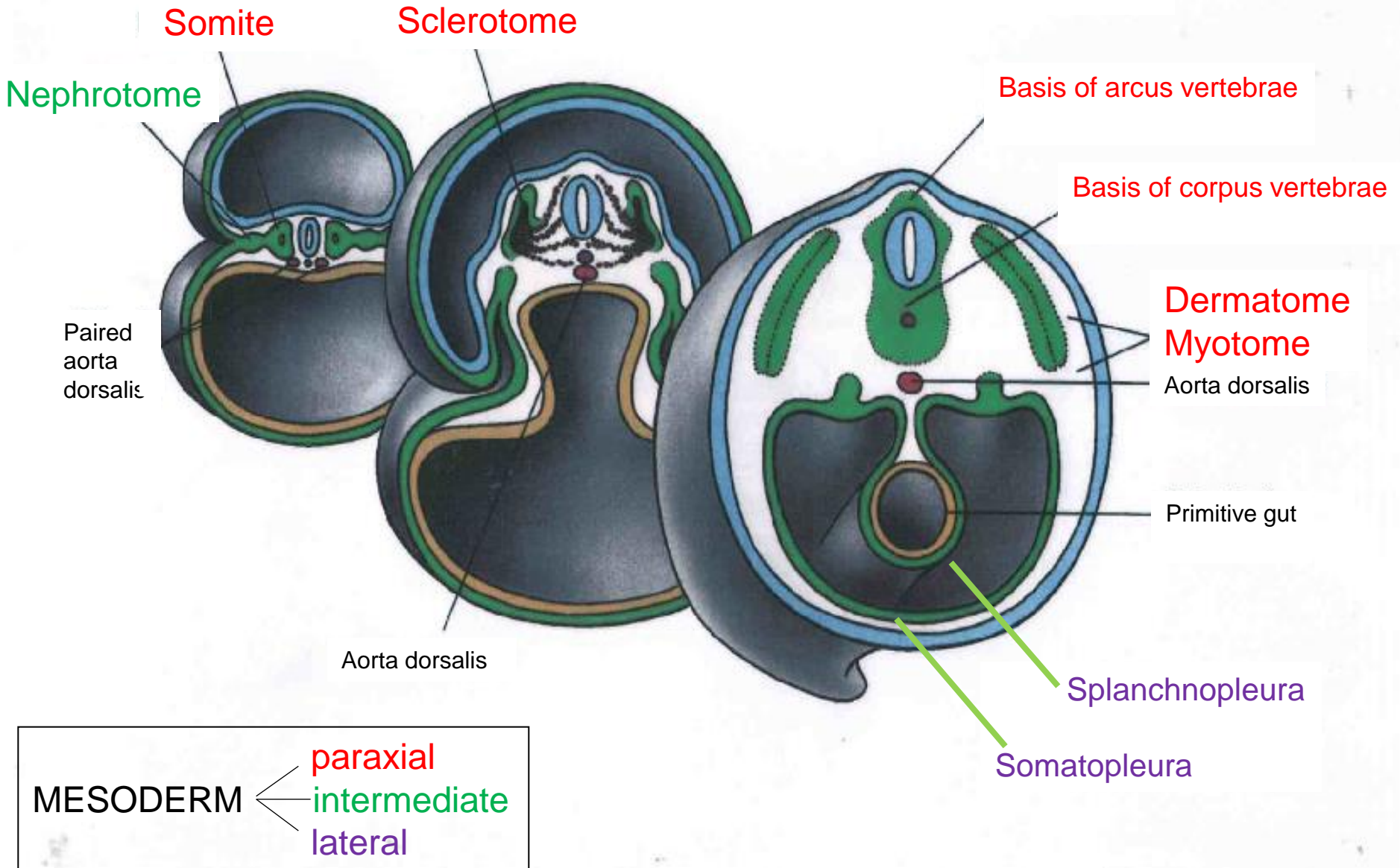


GERM DISC - DAY 17

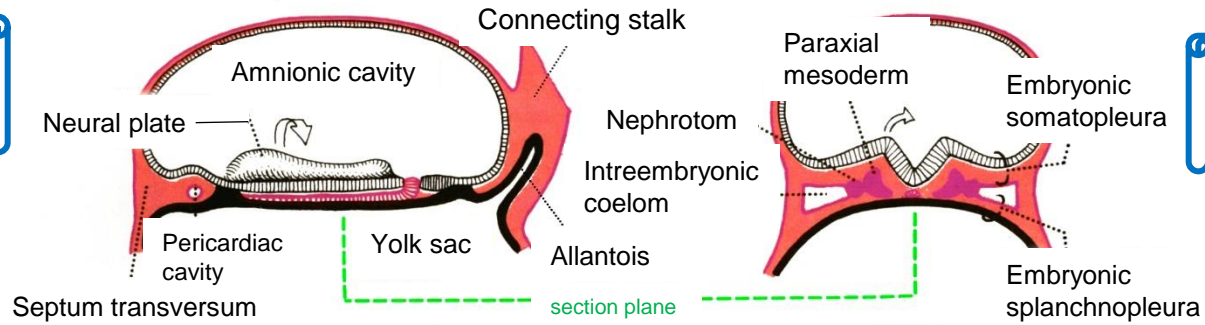


A – longitudinal section, **B**, **C** – transversal sections

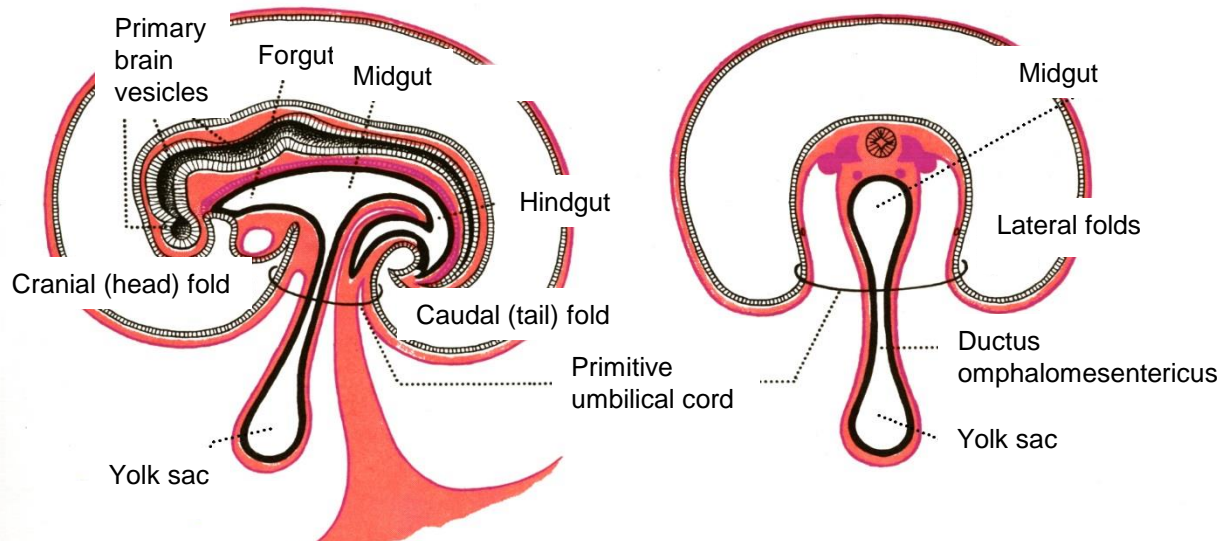
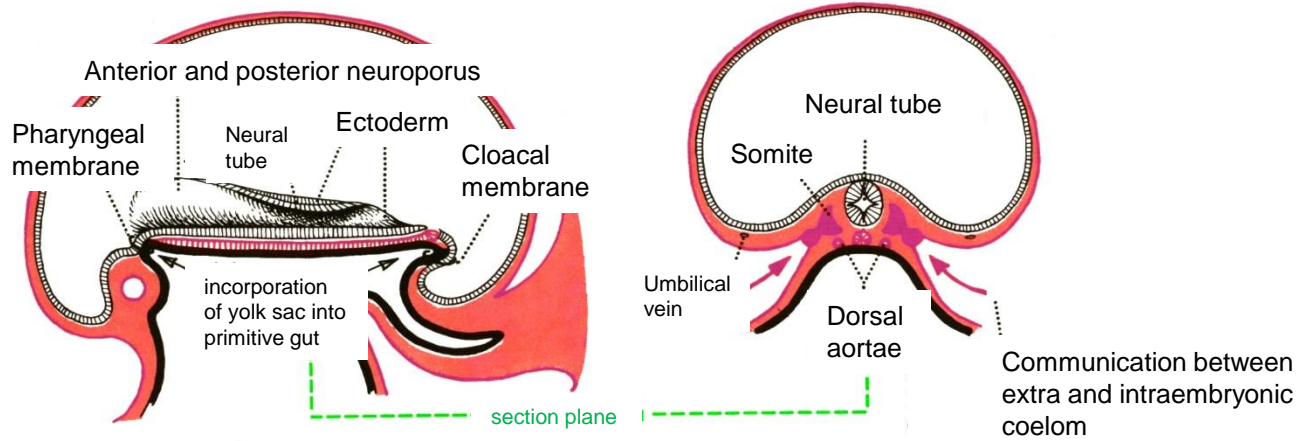
DIFFERENTIATION OF MESODERM



EMBRYO



FLEXION



Communication between extra and intraembryonic coelom



EMBRYOLOGY

Set of embryological images I, II