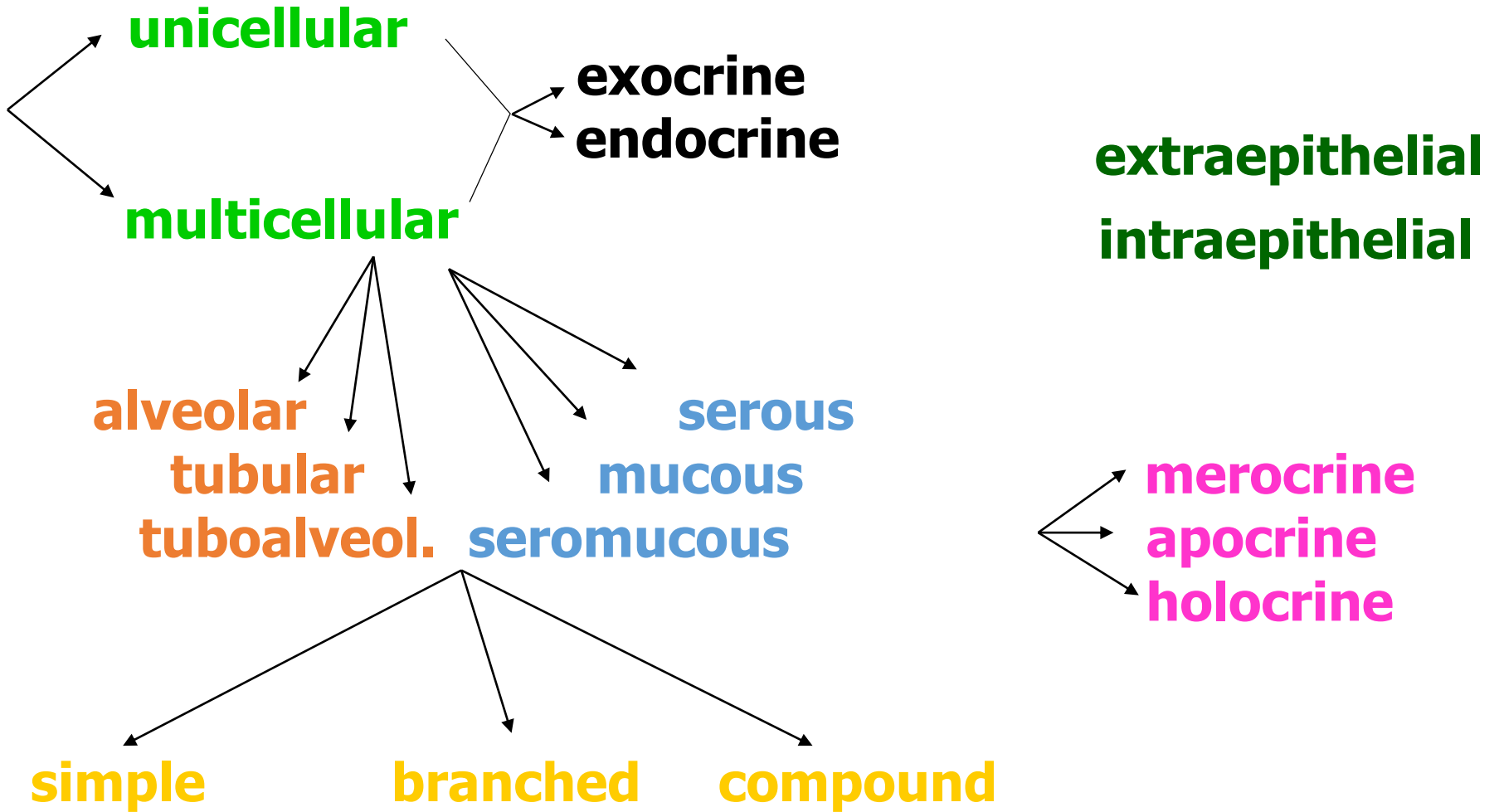




Glandular epithelium

- Unicellular
- Multicellular

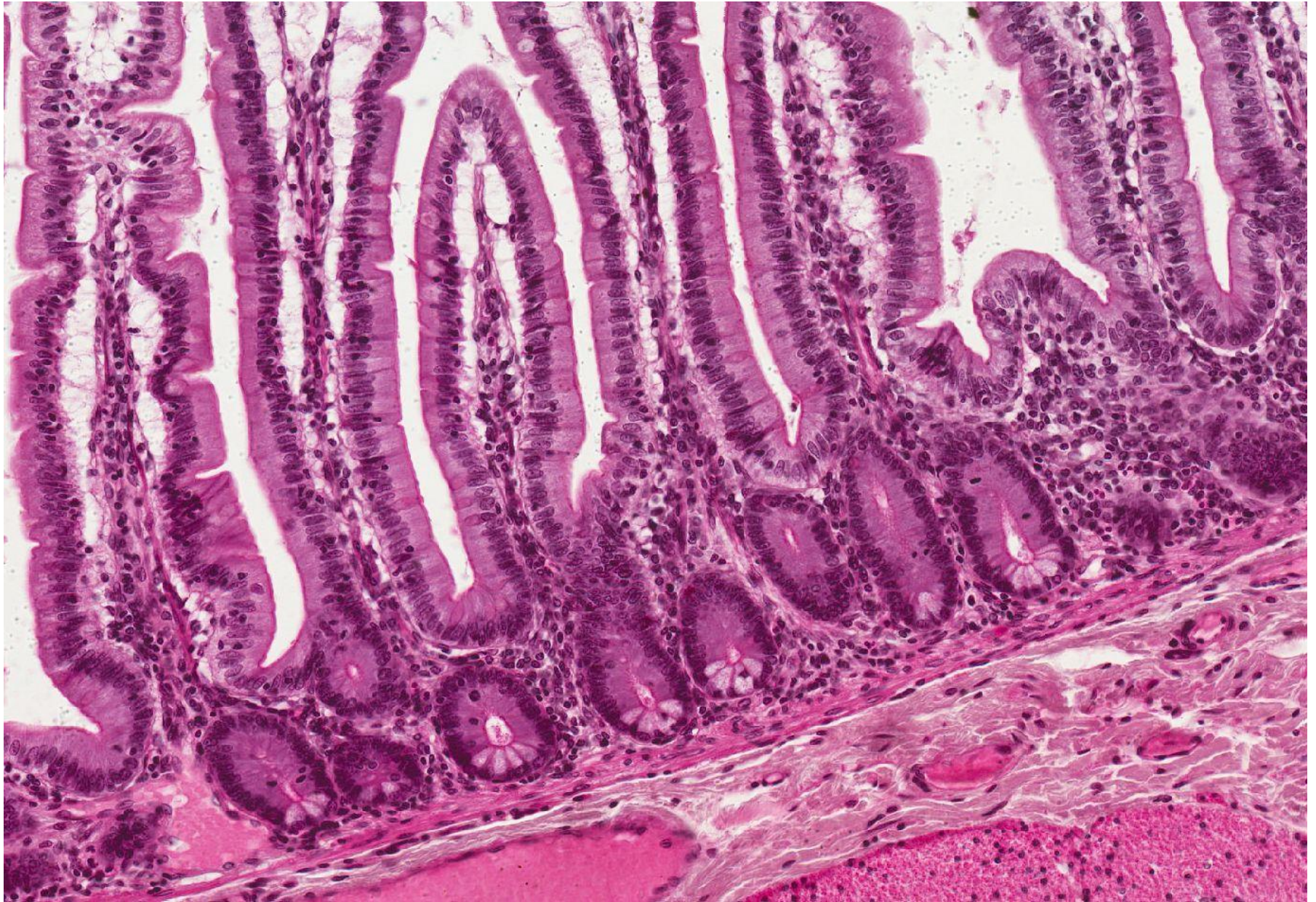
Classification of glands



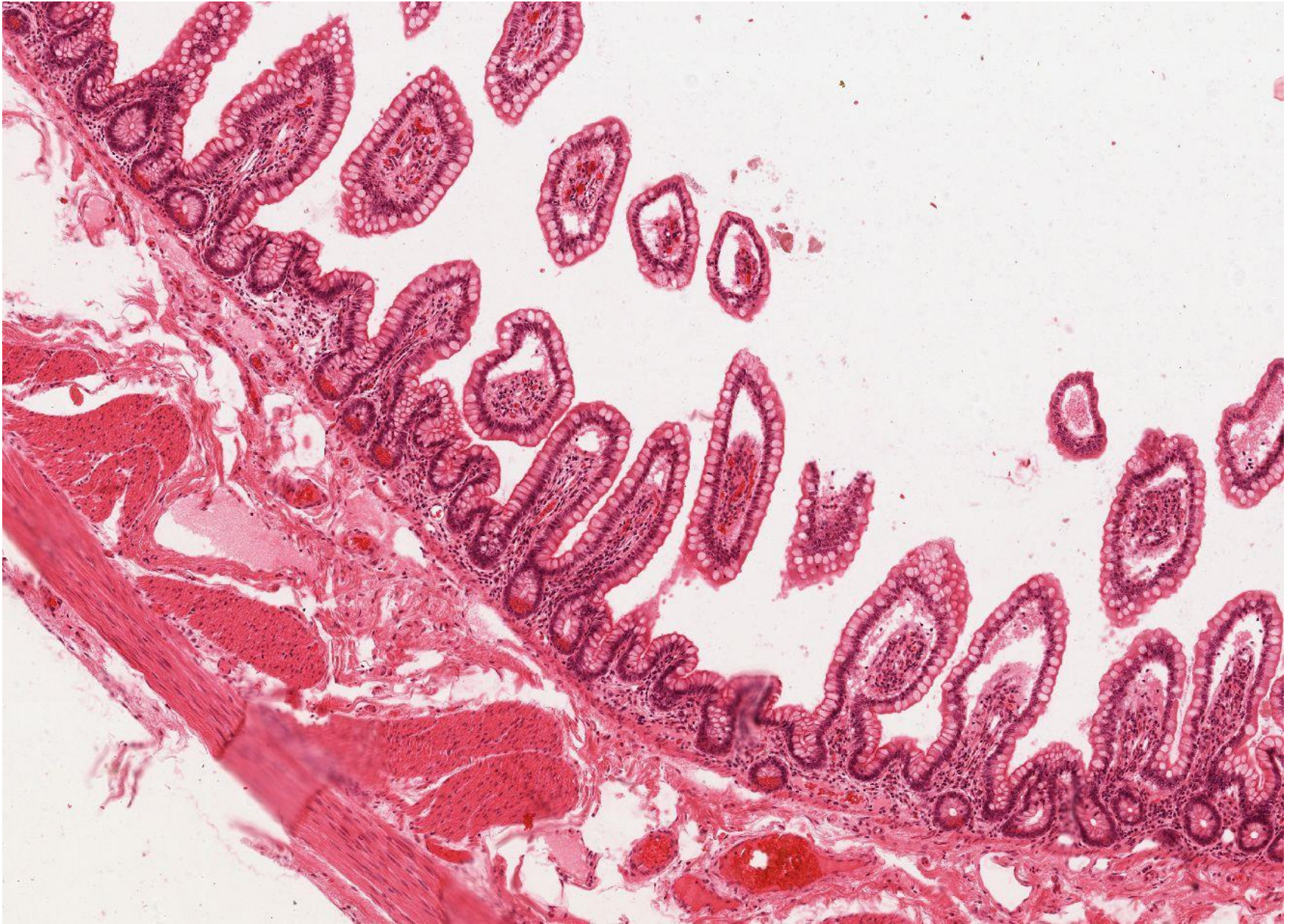
Unicellular glands intraepithelial – goblet cells (respiratory tract)



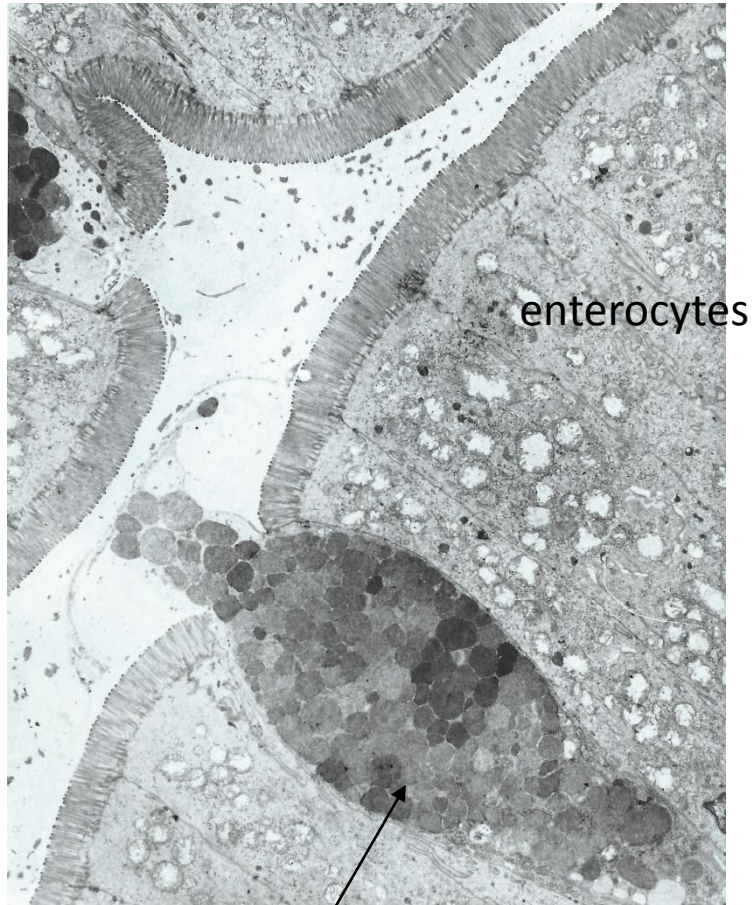
Unicellular glands intraepithelial (goblet cells and Paneth cells)
– Intestinum tenue (jejunum)



Unicellular glands intraepithelial (goblet cells and Paneth cells)
– Intestinum tenue (ileum)

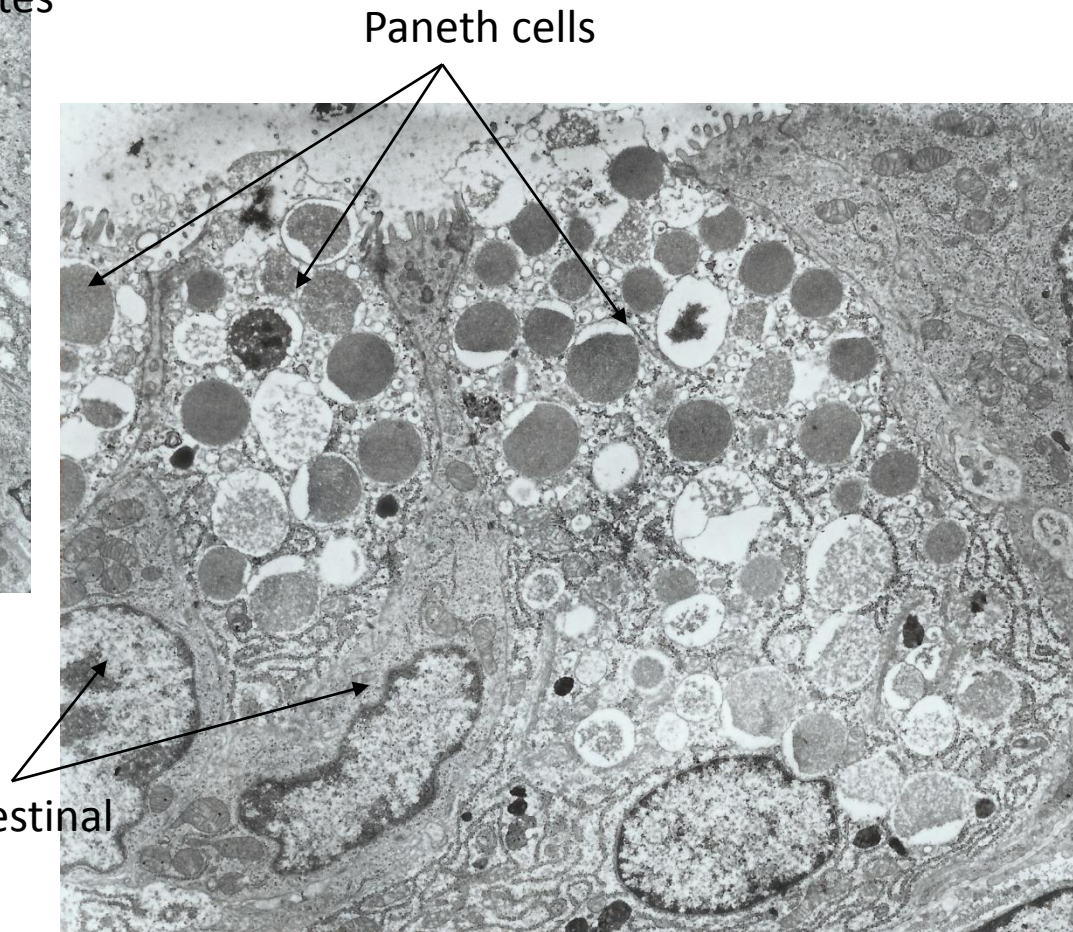


Goblet cells and Paneth cells - Intestinum tenue (TEM)



goblet cell

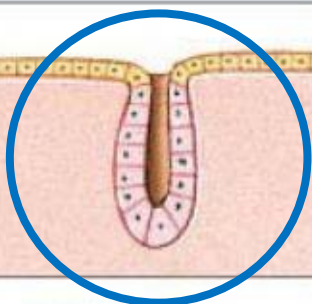
enterocytes



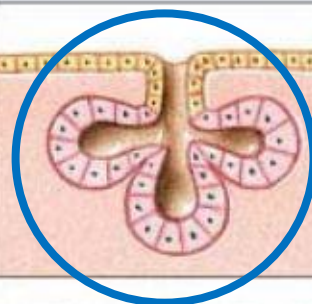
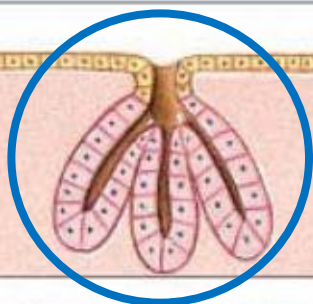
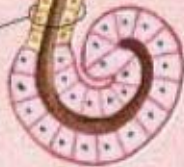
Paneth cells

stem cells of intestinal
epithelium

MULTICELLULAR SIMPLE GLANDS



Duct



Simple tubular

Simple coiled tubular

Simple branched tubular

Simple alveolar (acinar)

Simple branched alveolar

Examples:
Intestinal glands
(crypts of
Lieberkühn)

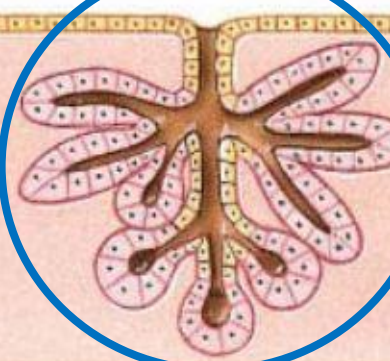
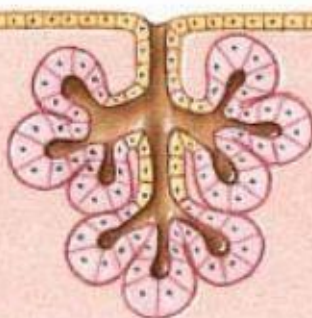
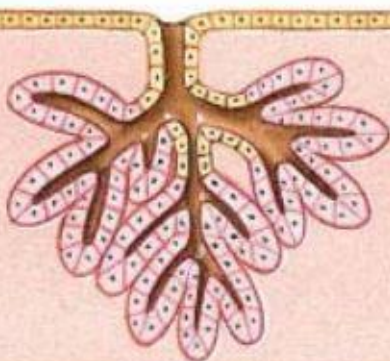
Examples:
Merocrine sweat
glands

Examples:
Mucous glands of
esophagus, tongue,
duodenum

Examples:
Not found in adult;
a stage in development
of simple branched
glands

Examples:
Sebaceous (oil)
glands

MULTICELLULAR COMPOUND GLANDS



Compound tubular

Compound alveolar (acinar)

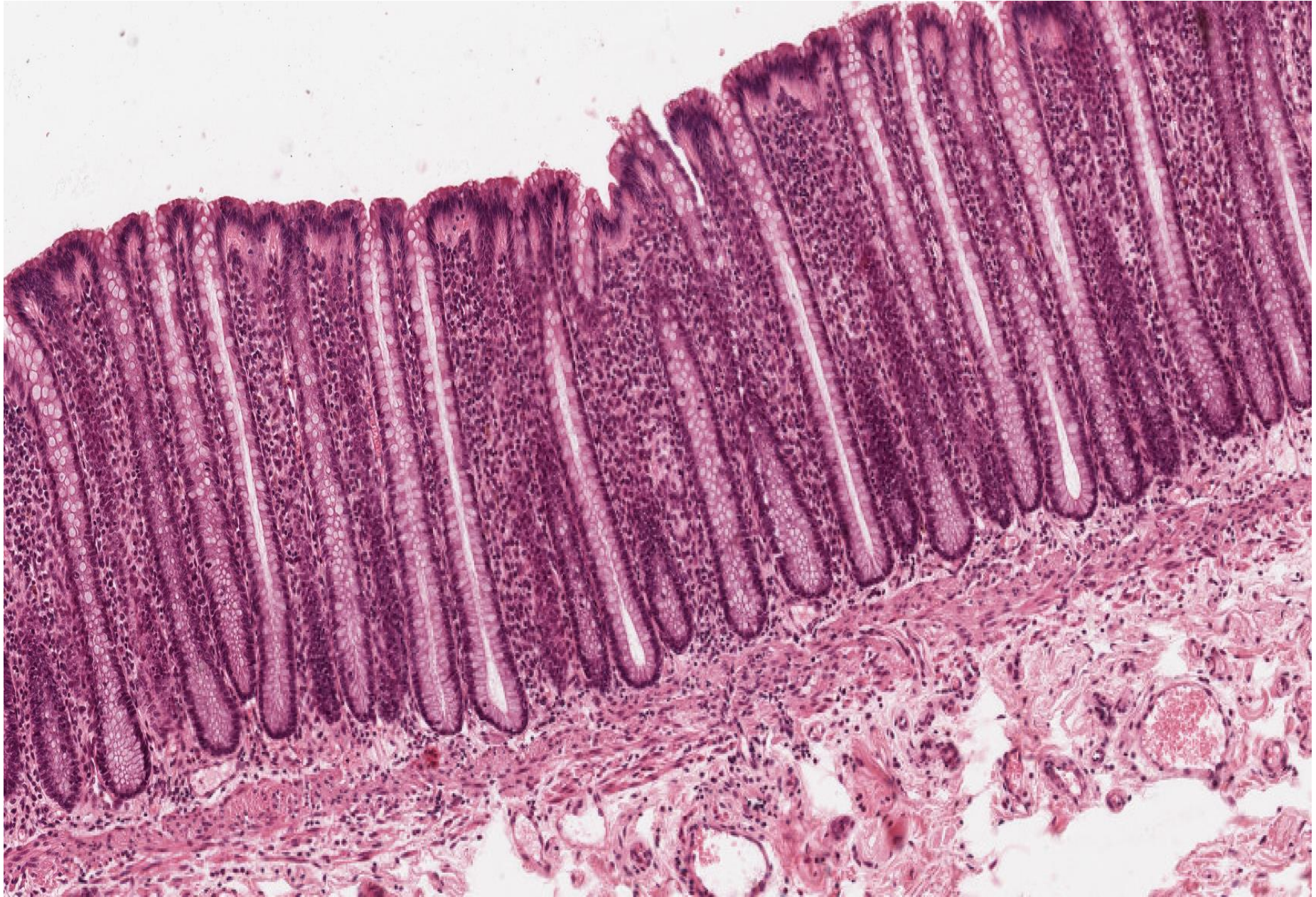
**Compound tubuloalveolar
(tubuloacinar)**

Examples:
Mucous glands (in mouth)
Gastric glands
Bulbourethral glands (in male
reproductive system)
Testes (seminiferous tubules)

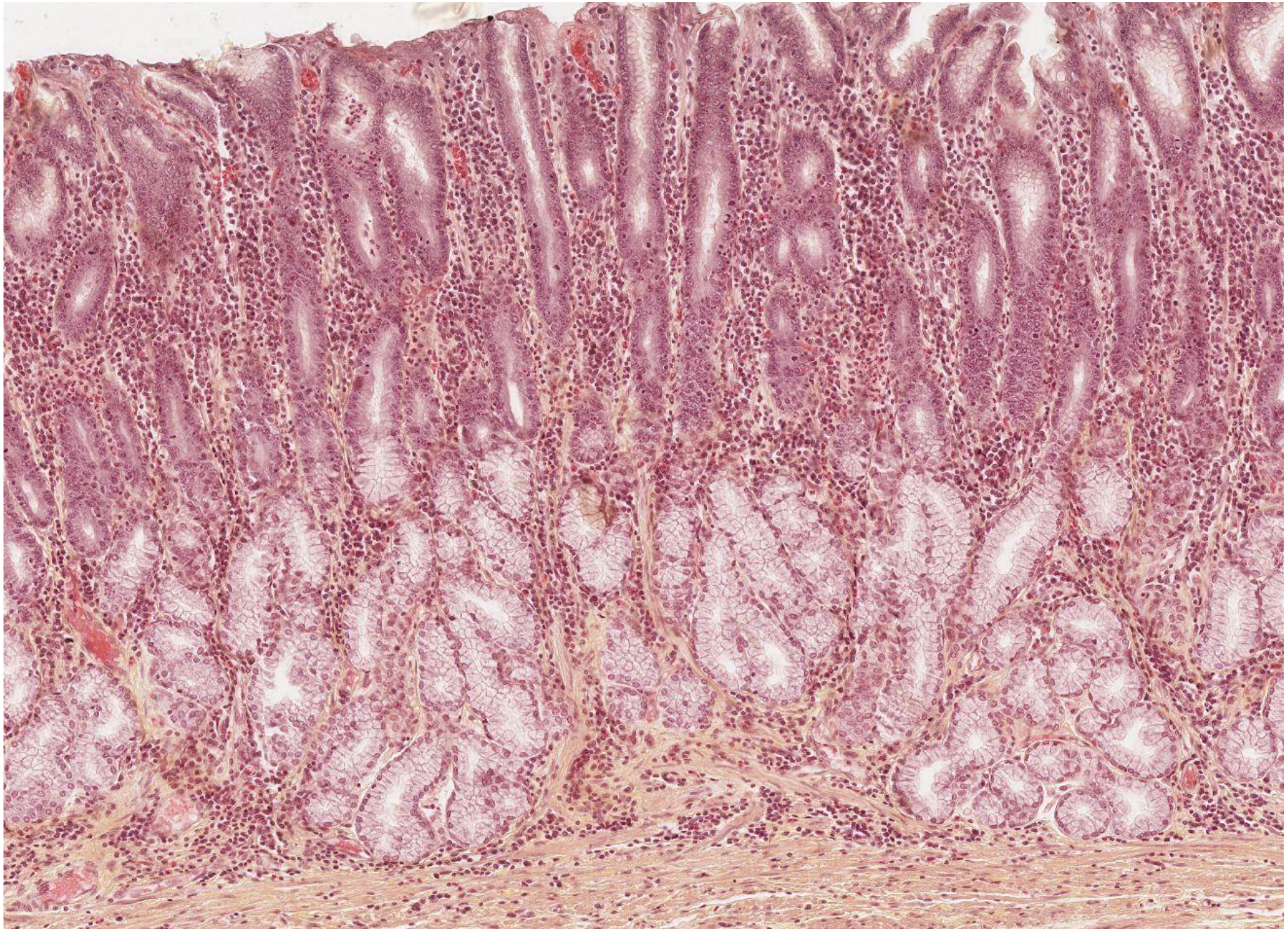
Examples:
Mammary glands

Examples:
Salivary glands
Glands of respiratory passages
Pancreas (excretory portion)

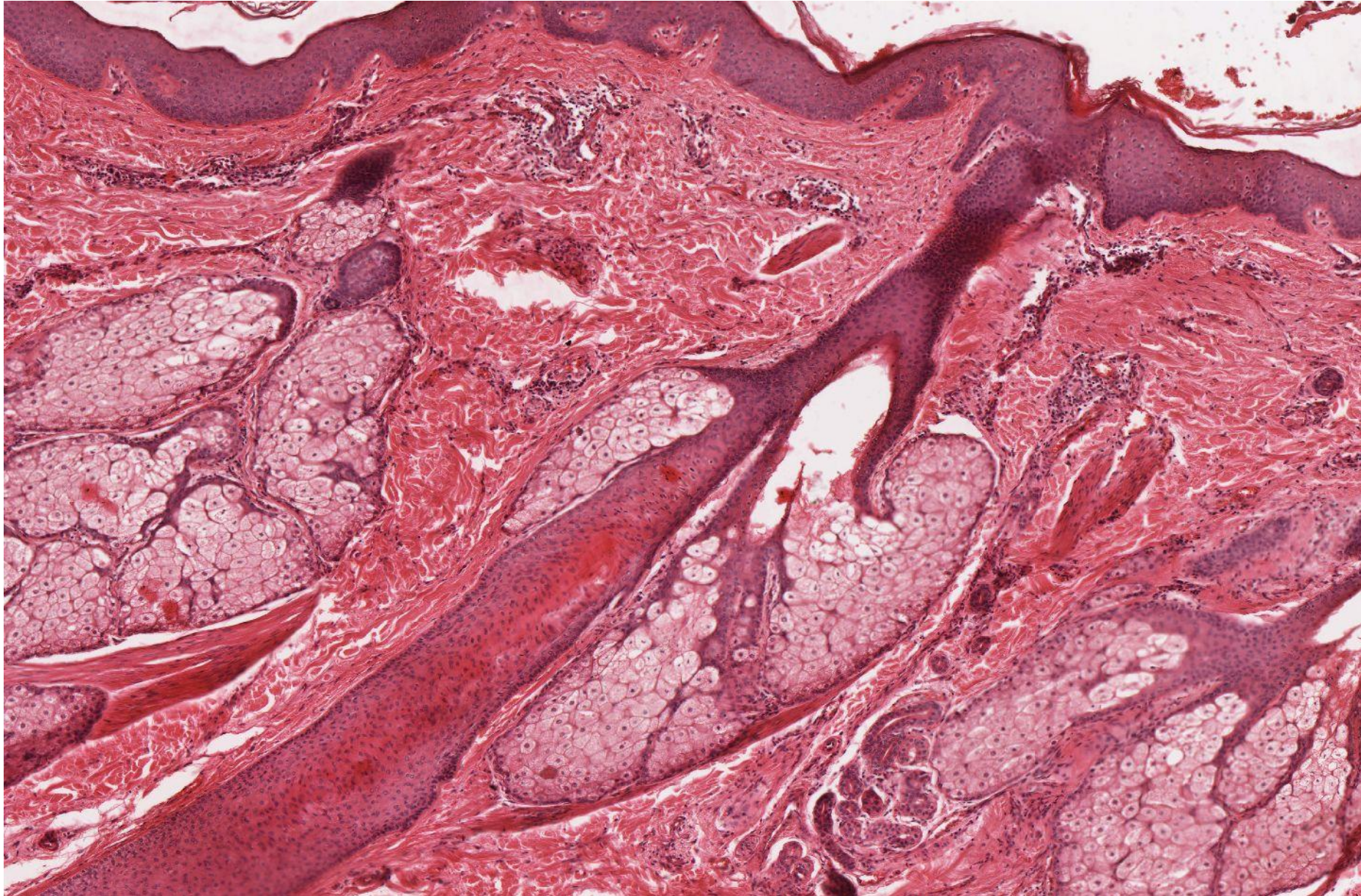
Simple tubular glands (crypts of Lieberkühn) with goblet cells
- Intestinum crassum



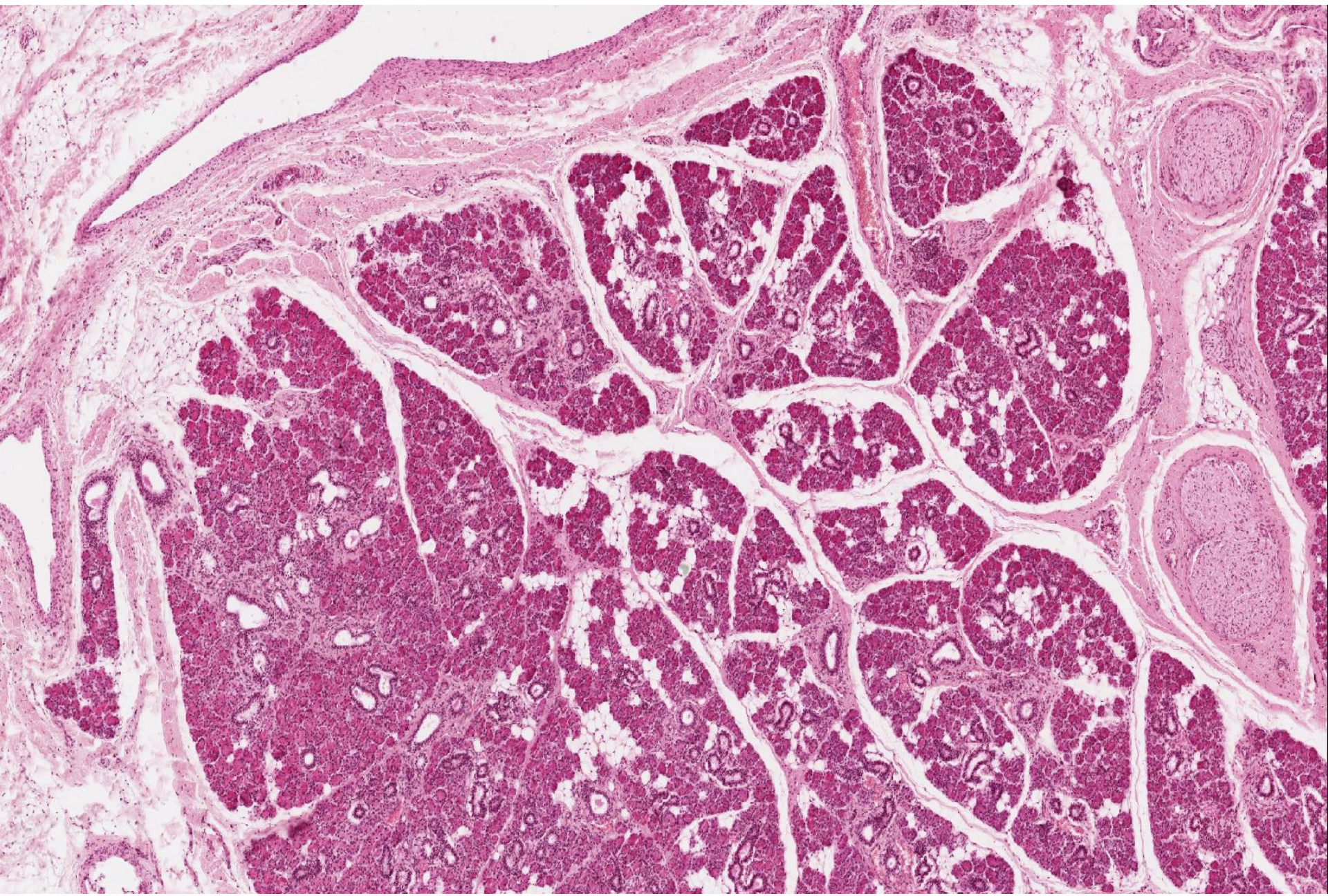
Branched tubular glands – Pylorus (HES)



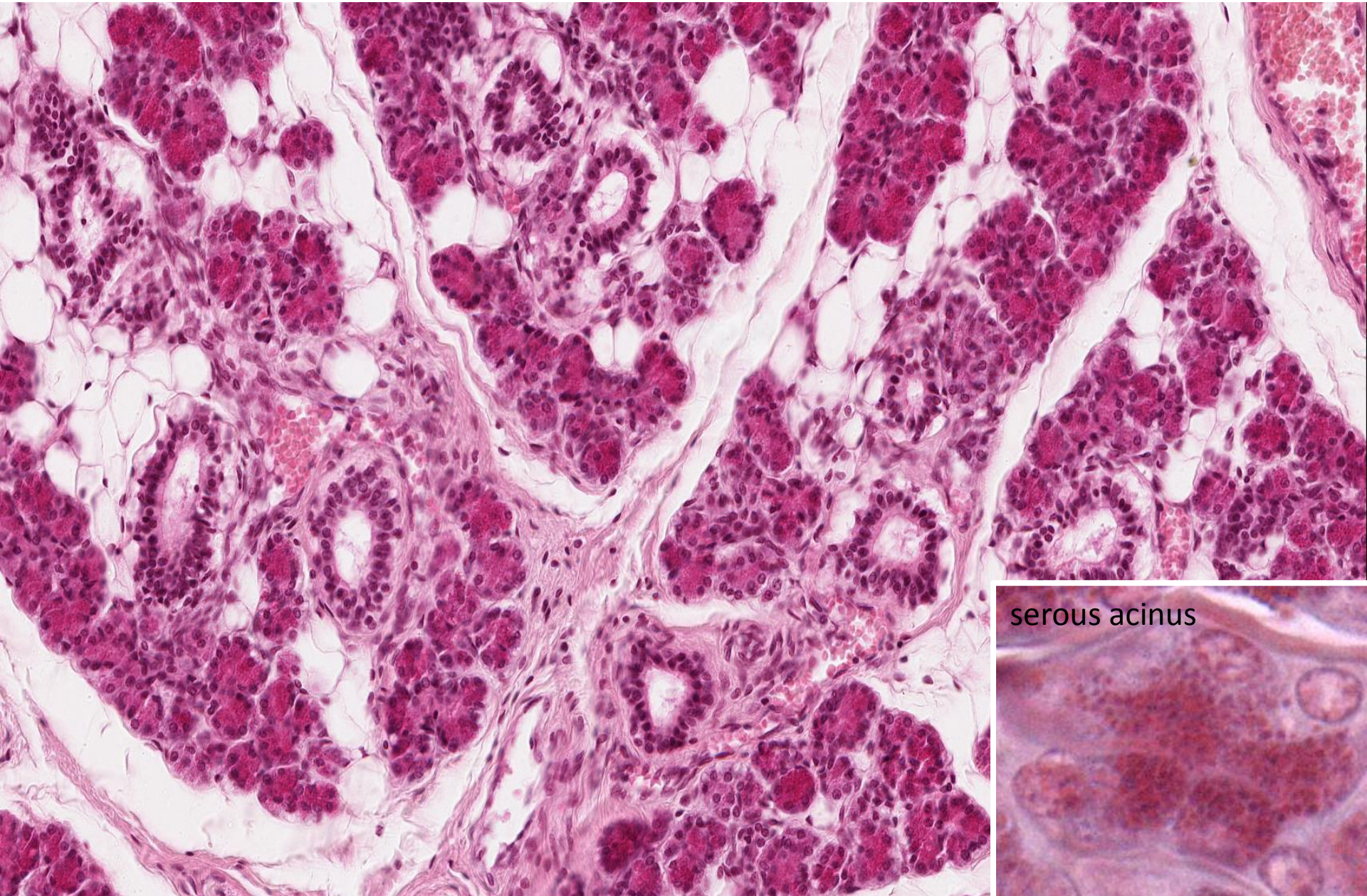
Branched alveolar (acinar) glands – sebaceous glands - Skin



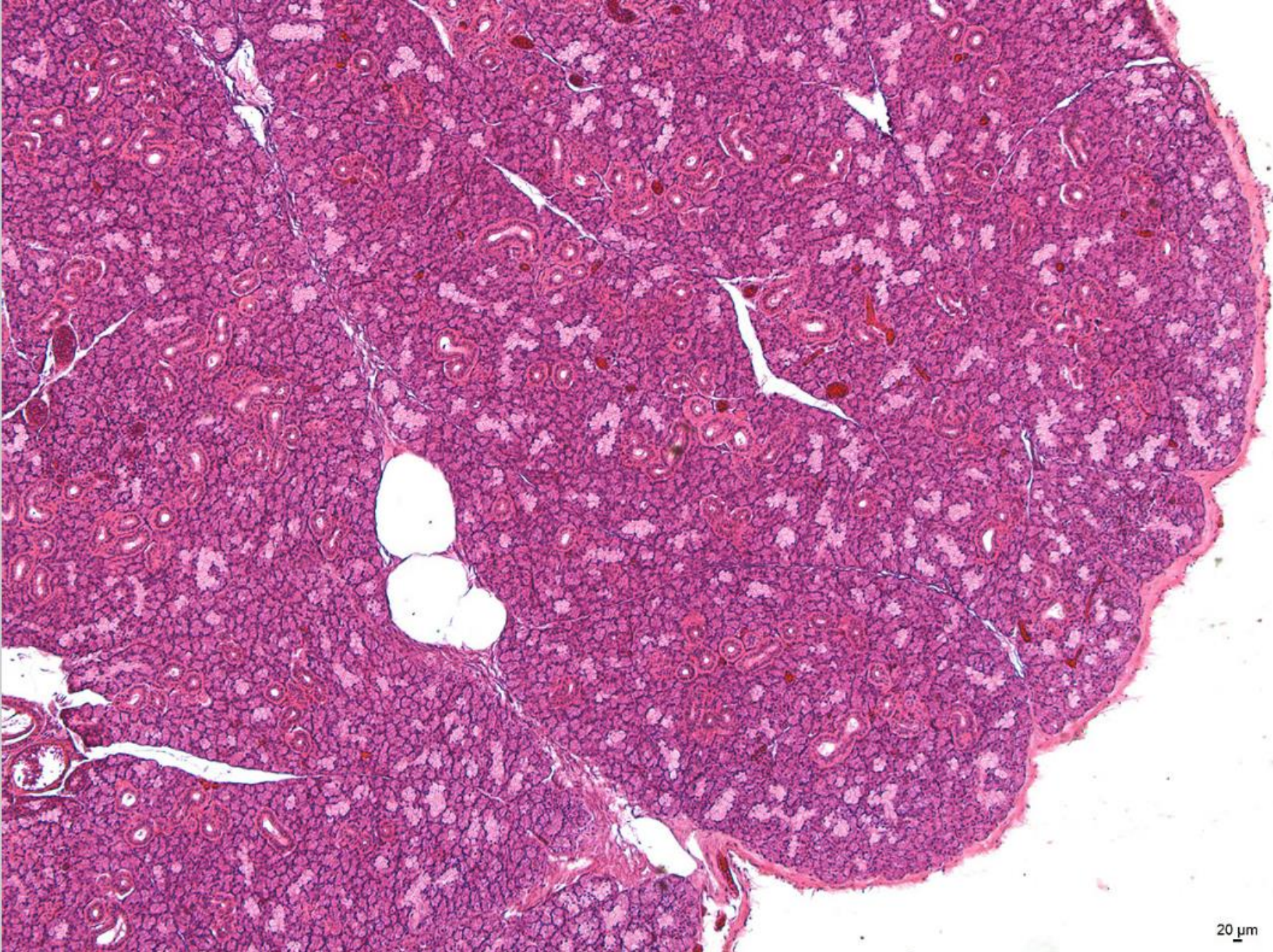
Compound alveolar (acinar) serous gland - Glandula parotis



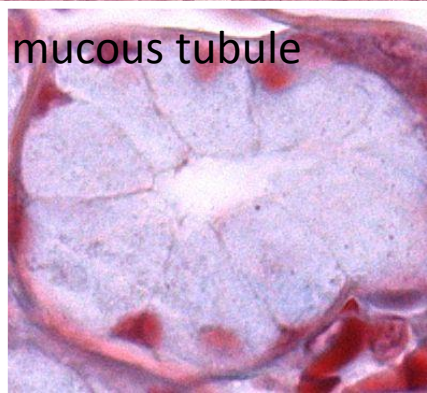
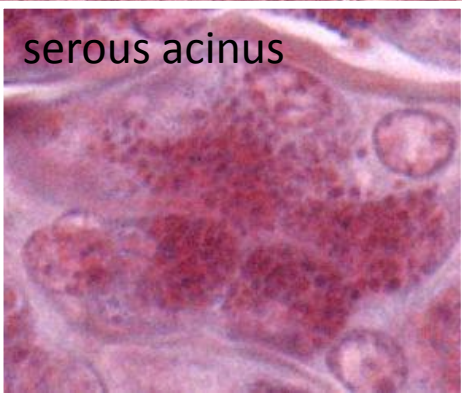
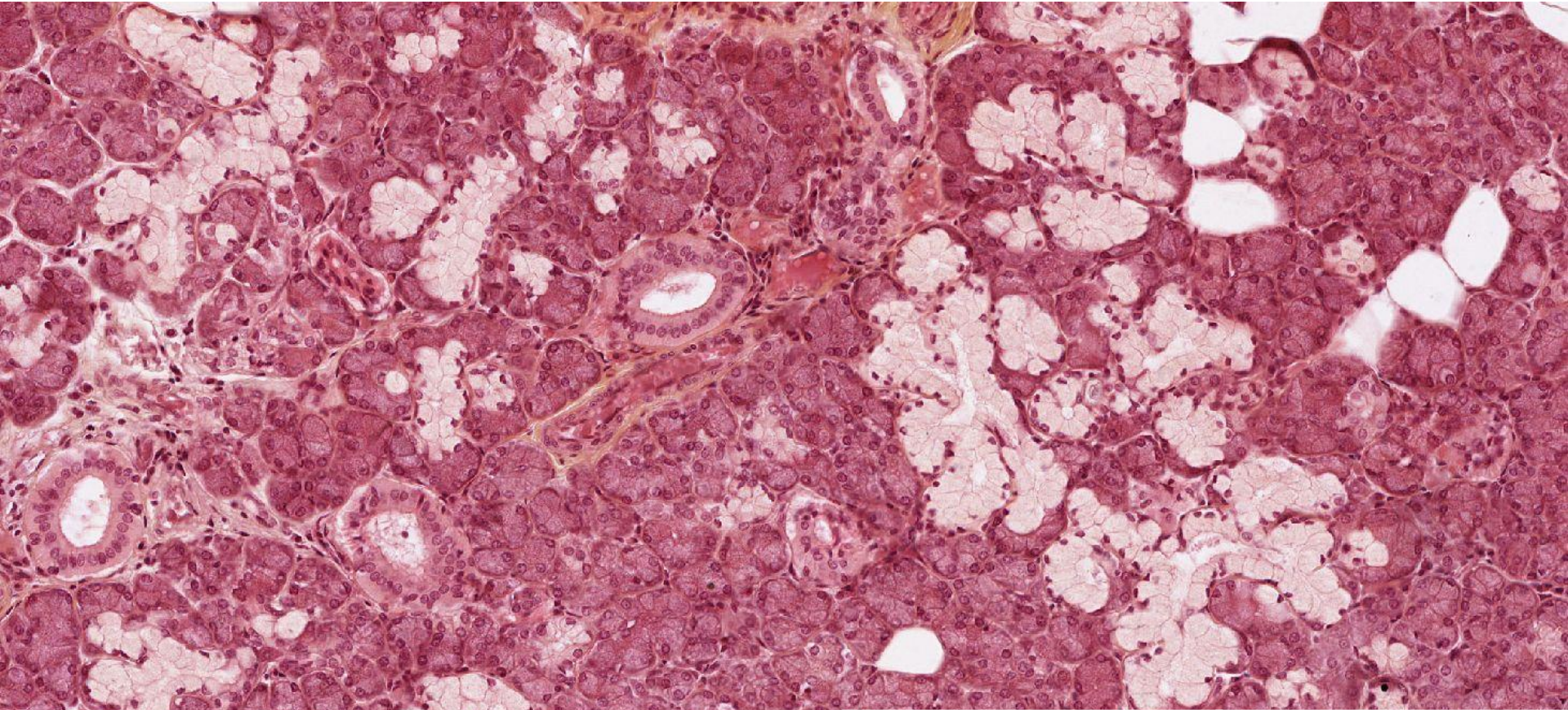
Compound alveolar (acinar) serous gland - Glandula parotis



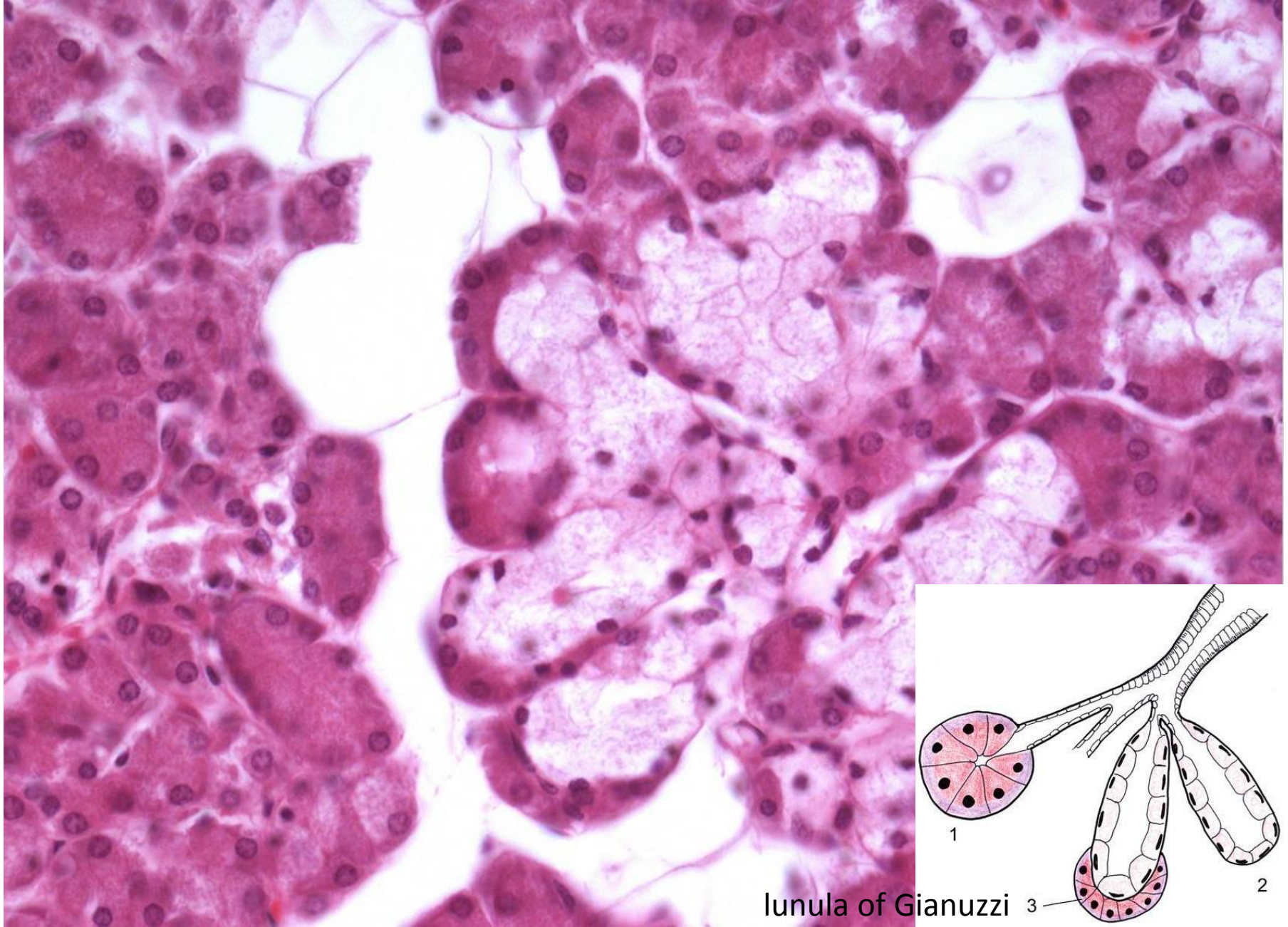
Compound tuboalveolar mixed gland - Glandula submandibularis



Compound tuboalveolar mixed gland - Glandula submandibularis



Compound tuboalveolar mixed gland - Glandula submandibularis



Lunula of Gianuzzi

Compound tuboalveolar mixed gland - Glandula sublingualis



Glandular epithelium

Slides:

Cells of Paneth and goblet cells (16. Intestinum tenue)

Simple tubular glands with goblet cells (17. Intestinum crassum)

Branched tubular glands (14. Pylorus)

Branched alveolar (acinar) glands – sebaceous glands (71. Skin with hair)

Compound alveolar (acinar) serous gland (8. Glandula parotis)

Compound tuboalveolar mixed gland (9. Glandula submandibularis)

Atlas EM:

Glandular cell (50)