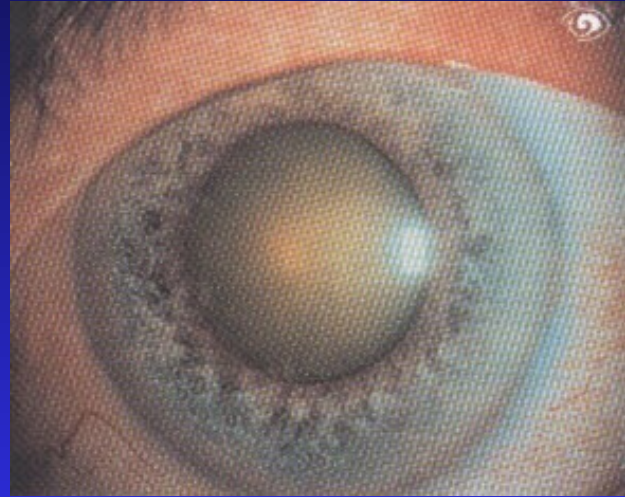
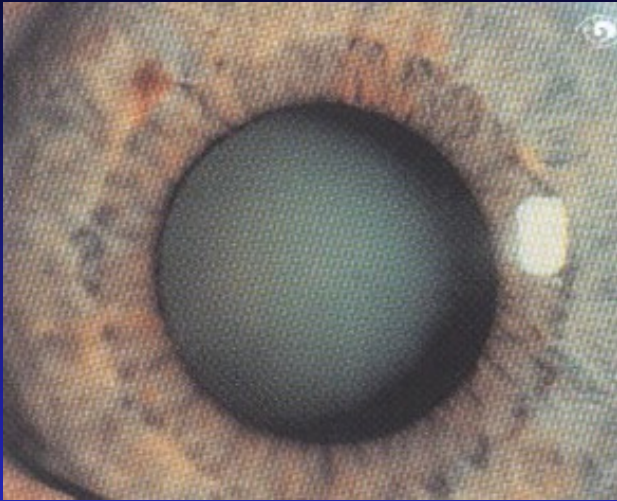


CATARACT



CATARACT SURGERY



TRAUMATIC CATARACT

Doc.Pitrova

UIS

0 3

UIS AP FP3
00:00.0 0.0 %

Power

60

- Irr
- 110
- Asp
- 40
- Rise
- 2
- Vac
- 400

INFINITI
Acer

CATARACT + GLAUCOMA

Doc.Pitrova

OZil

0

3

G.D.E.

0.00

Power

35

Ampl

70

Irr

110

Asp

35

Rise

2

Vac

400

CATARACT + GLAUCOMA

Doc.Pitrova

UIS

0

3

UIS

AP FP3

00.26.8

18.8 %

Power

60

Irr

110

Asp

40

Rise

2

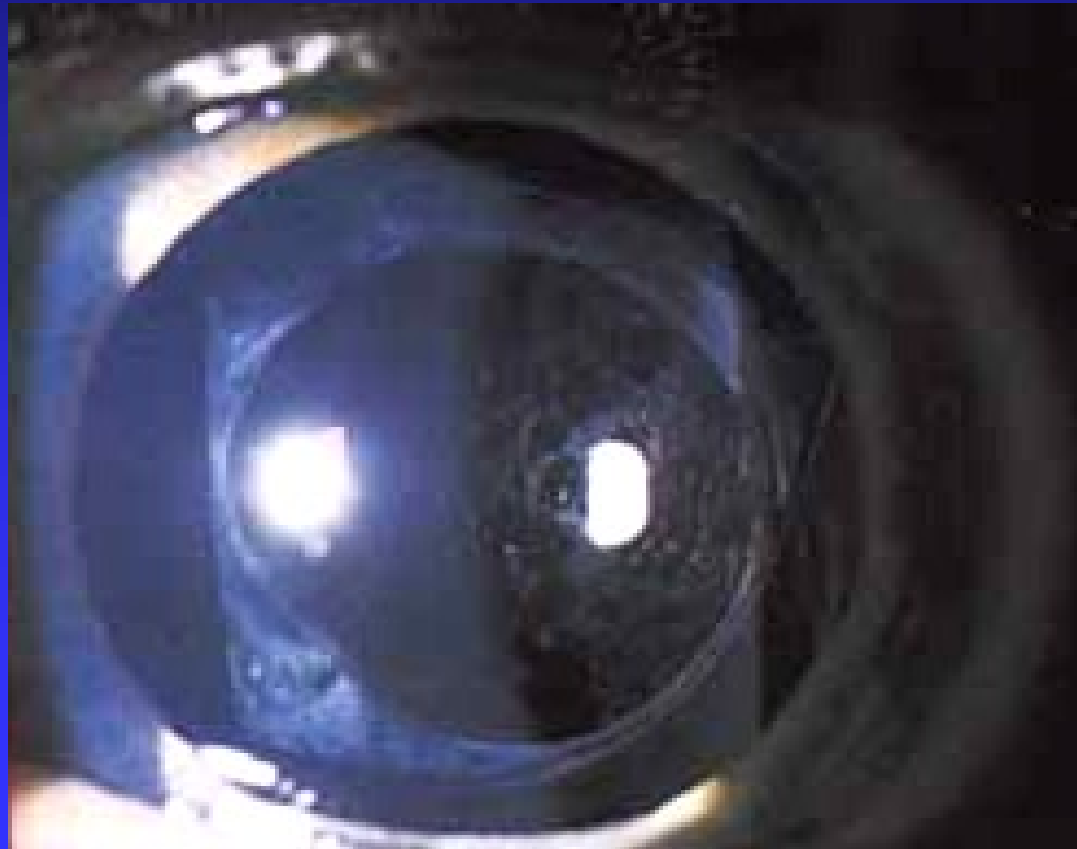
Vac

400

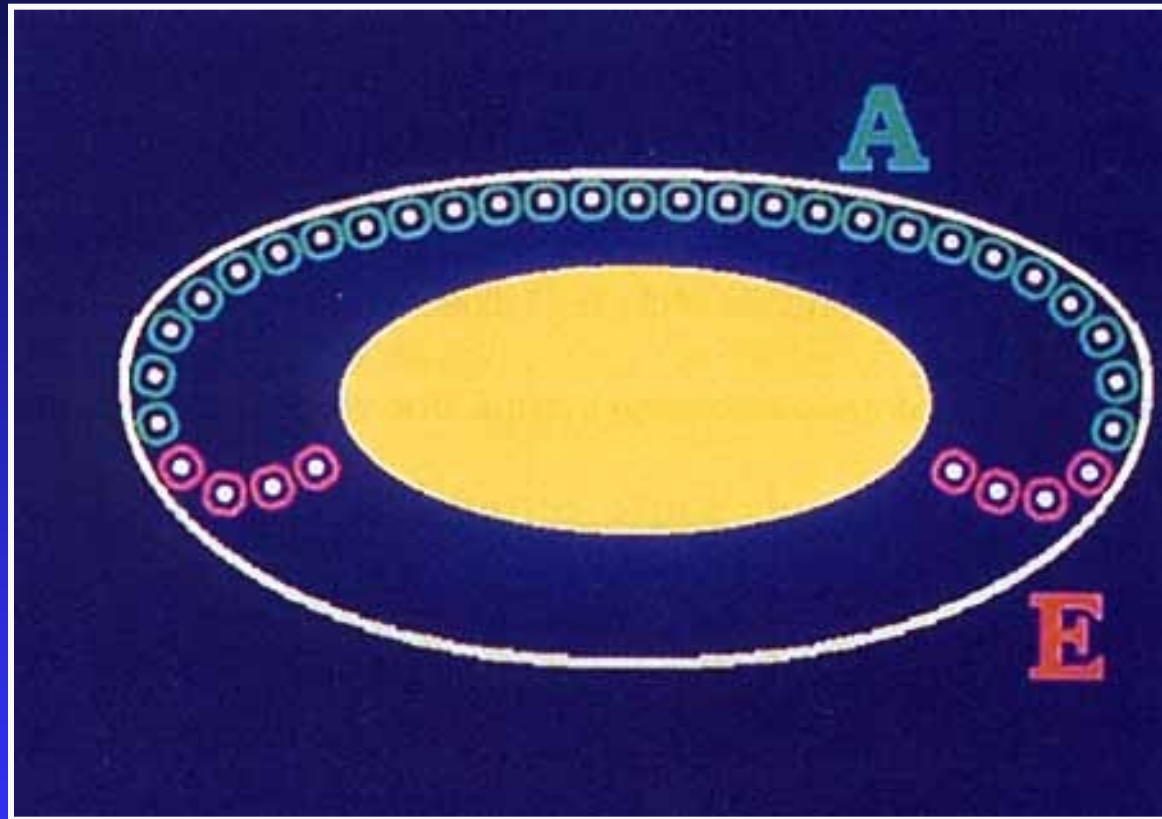
UNENITI
Accon

SECONDARY CATARACT

- **postoperative complication (more than 25% operated eyes during five years after surgery)**



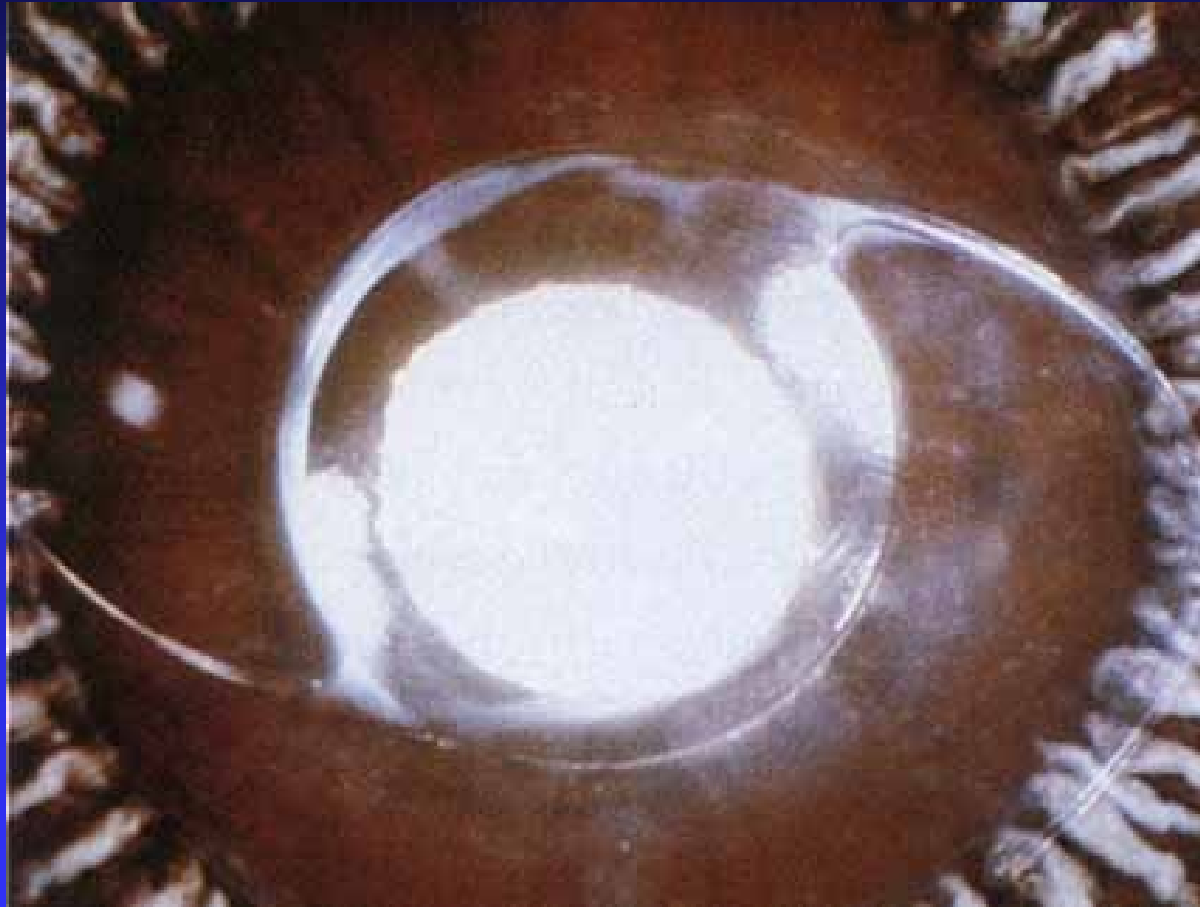
SECONDARY CATARACT



A cells

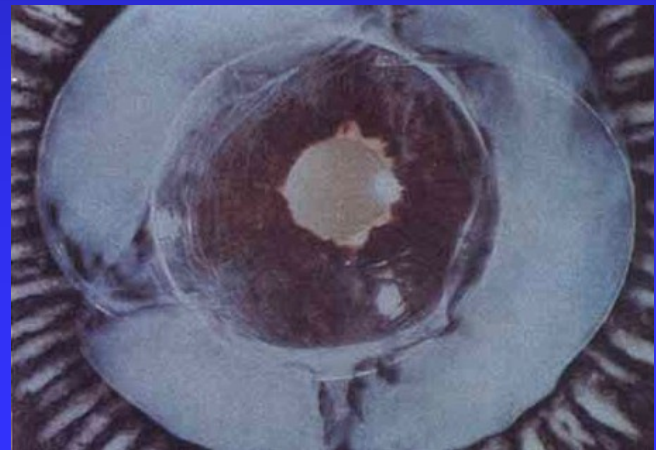
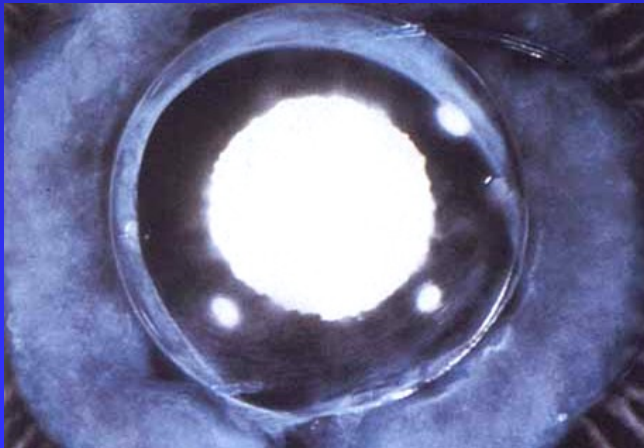
E cells

SECONDARY CATARACT

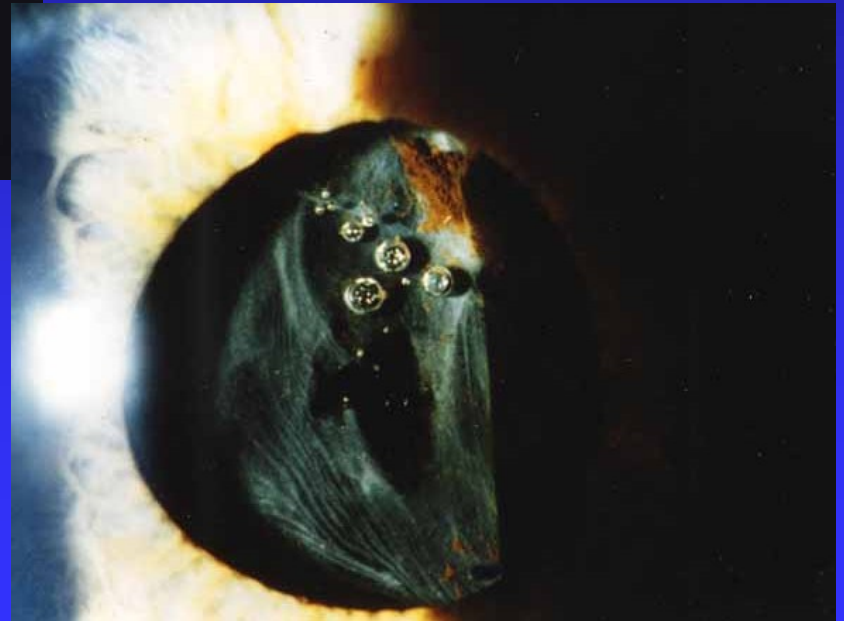
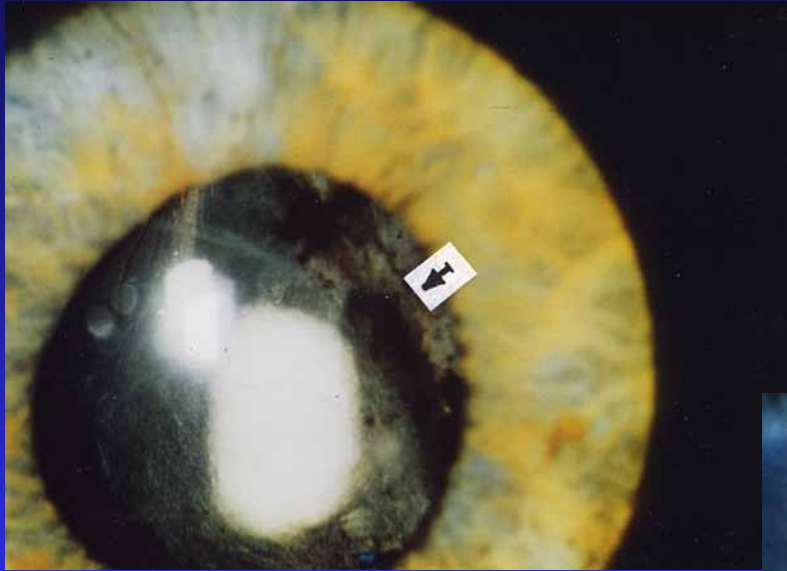


Miyake - Apple

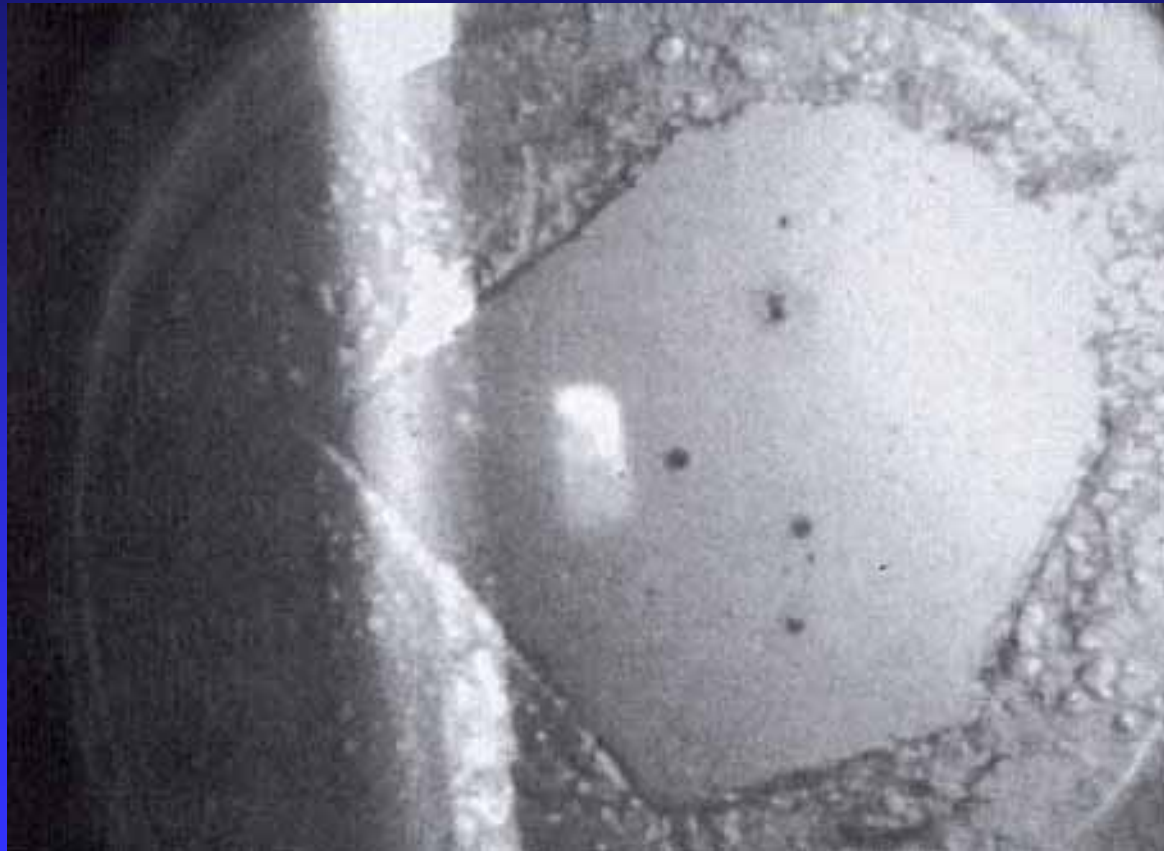
SECONDARY CATARACT



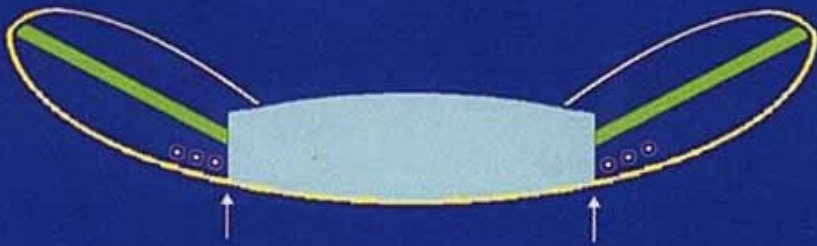
SECONDARY CATARACT



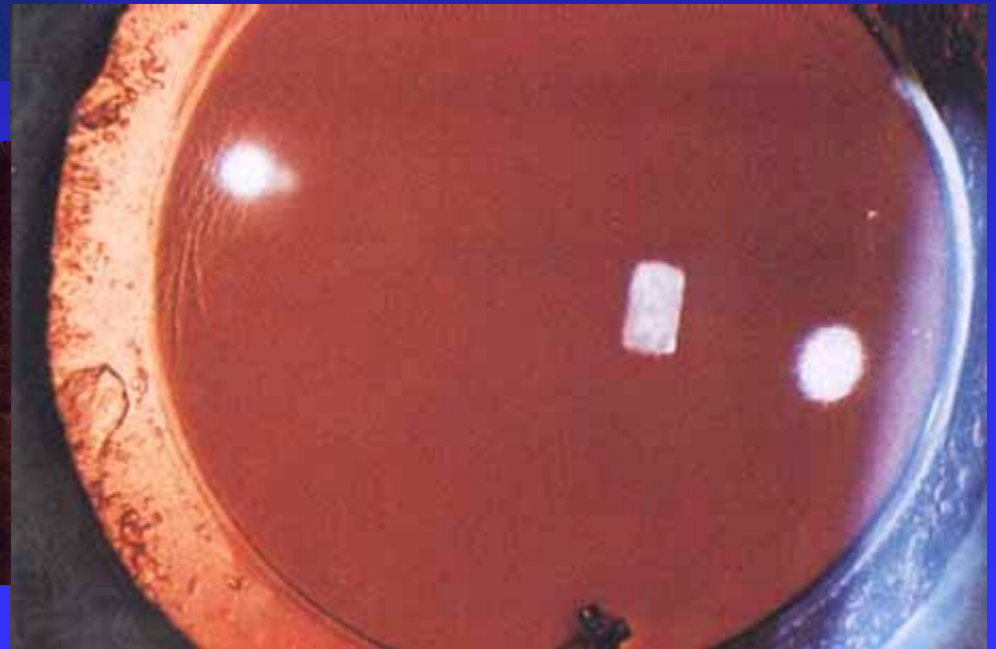
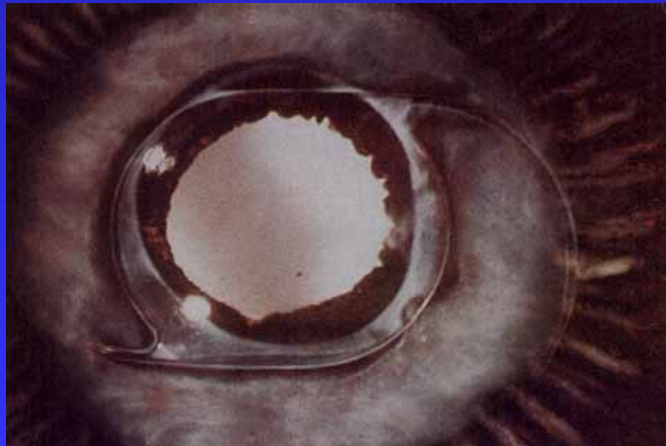
SECONDARY CATARACT



PROPHYLAXIS OF SECONDARY CATARACT



design of the IOL



PROPHYLAXIS OF SECONDARY CATARACT

excellent surgery

