

Expressing position

«a particular way in which someone or something is placed or arranged, in relation to something or someone else»

Use of grammar

1. Adjectives

- Ex: linea medialis

2. Prefix- is a word part attached to the beginning of a word root to modify its meaning

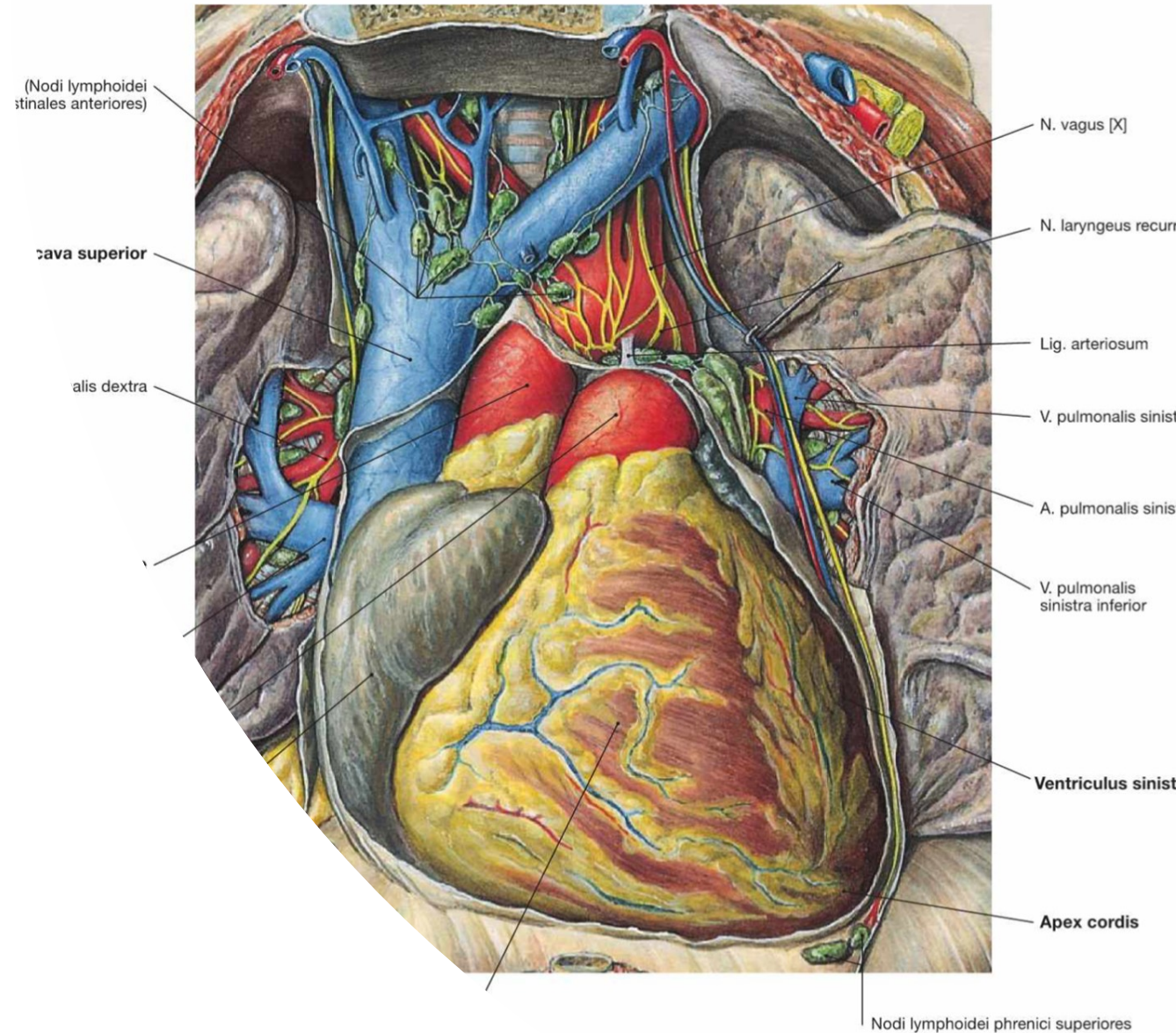
- Ex: Suprarenalis

3. Prepositions

- Ex: in situ

4. Comparative form

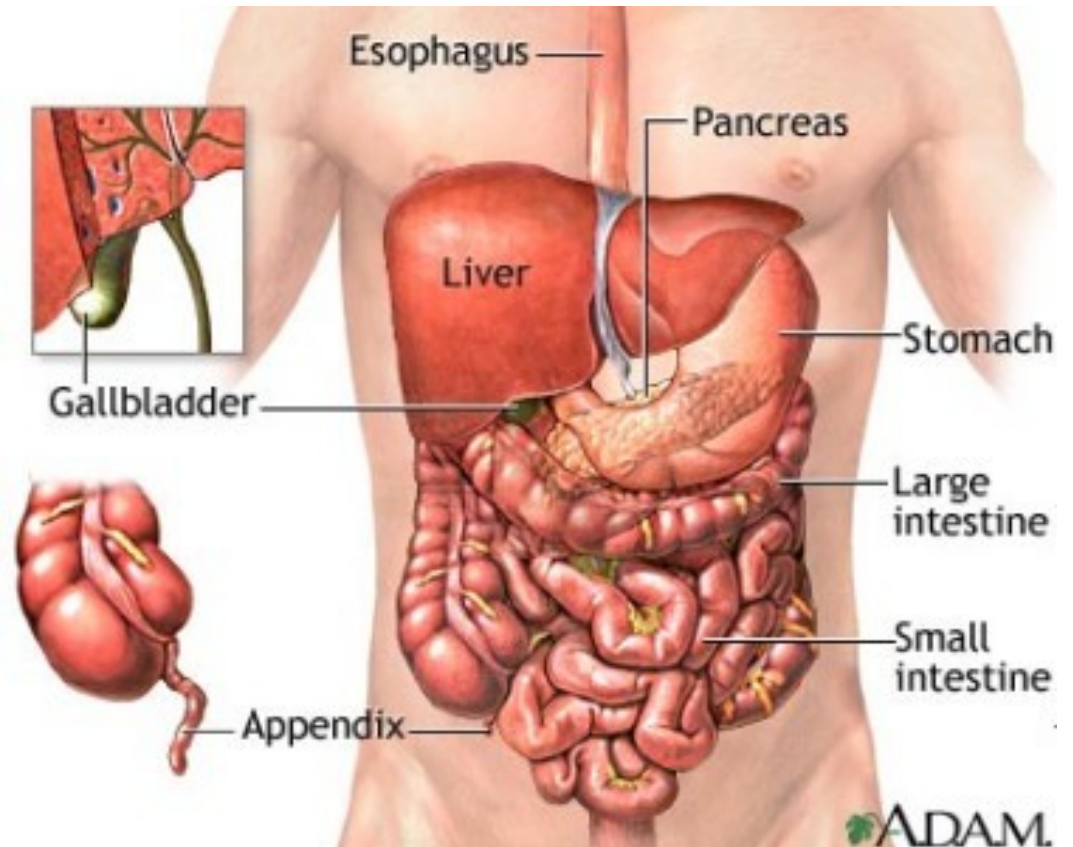
- Ex: maximus / medius / minimus



General terms

- Locus, i, m.
- Situs, us, m
- Positio, onis, f
- Localis, e

- Examples
 - *In situ*
 - *Loco typico*



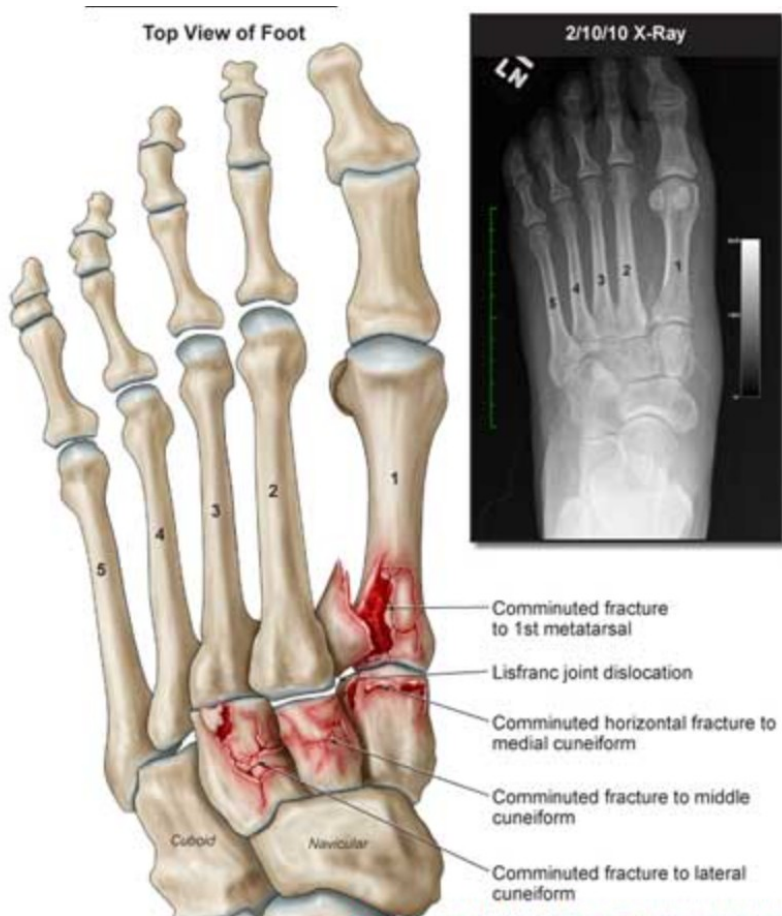
Example. Organa loco typico. This is the typical location of the organs

How to express lateral and medial positions?

- With noun: *Latus, eris, n.*
 - *lateris dextri* (l.dx.)
 - *lateris sinistri* (l.sin.)
 - *lateris utriusque* (l. utr.)
- With adjective:
 - *lateralis, e*
 - *medialis, e*
- Superlative form
 - *latissimus*

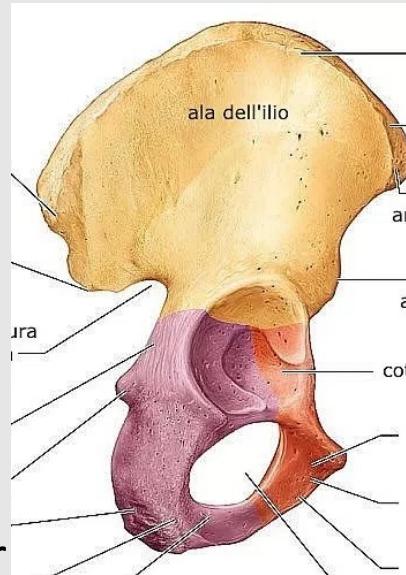


Fractura pedis lateris dextri



How to express anterior and posterior positions?

- Anterior position = before
 - Antero-
 - Ante-
 - Prae-
 - Pro-
- Example:
Spina iliaca **anterior** superior



- Posterior position = after
 - Postero-
 - Post-
 - Retro-
 - Meta-
- Example:
Spina iliaca **posterior** superior

How to express superior and inferior positions?

Comparative form of «super»=over

Superior, ius = Higher, «being more above»

- Spina iliaca anterior superior

Prefixes

- Supero- *superomedialis*
- supra-/super – *supraclavicularis*
superficialis
- Epi (Upon) - *epidermis*
- Hyper (Over) - *hyperacusis*

Comparative form of «inferus»=low

Inferior, ius = Lower

Prefixes

- Infero- *inferoposterior*
- Infra- *infraorbitalis*
- Sub- *sublingualis*
- Hypo- *hypodermis*

How to express internal and external positions?

- Internal= on the inside

Positive form

- internus, a, um = “internal” – *M. obturatorius internus*
- Intimus, a, um = “innermost” – *tunica intima*

Prefixes

- Intra- *haemorrhagia intracranialis*
- Endo- *endocardium*

- External= on the outside

Positive form

- externus, a, um

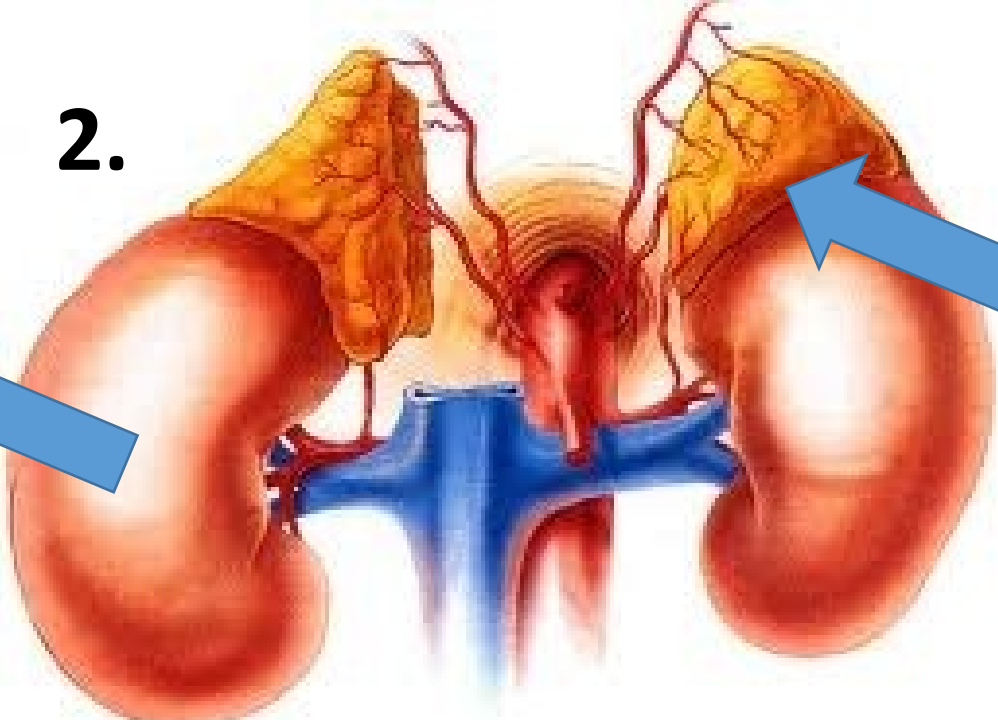
Prefixes

- extra- Extrahepatic ductus biliares
- ecto-/exo- *ectopic*

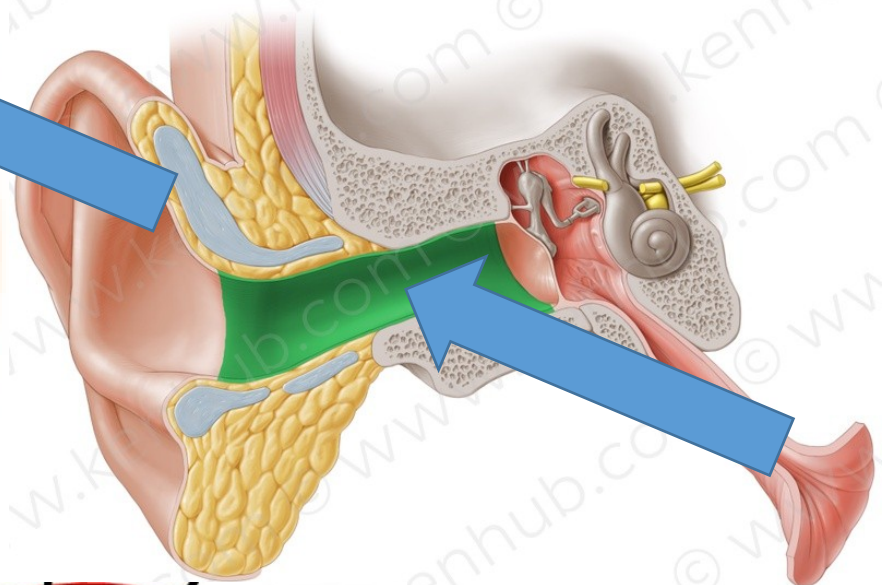
1.



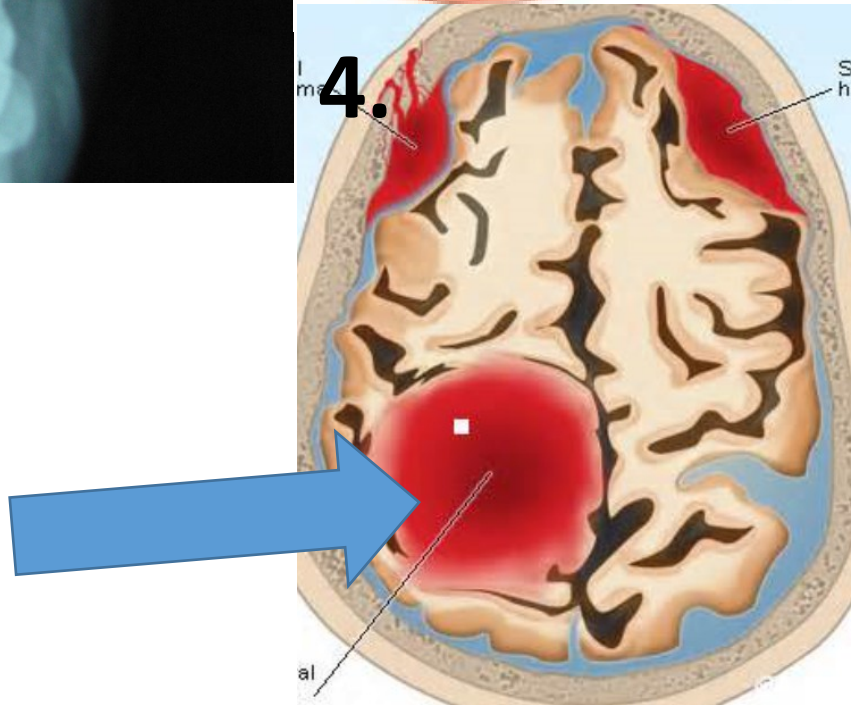
2.



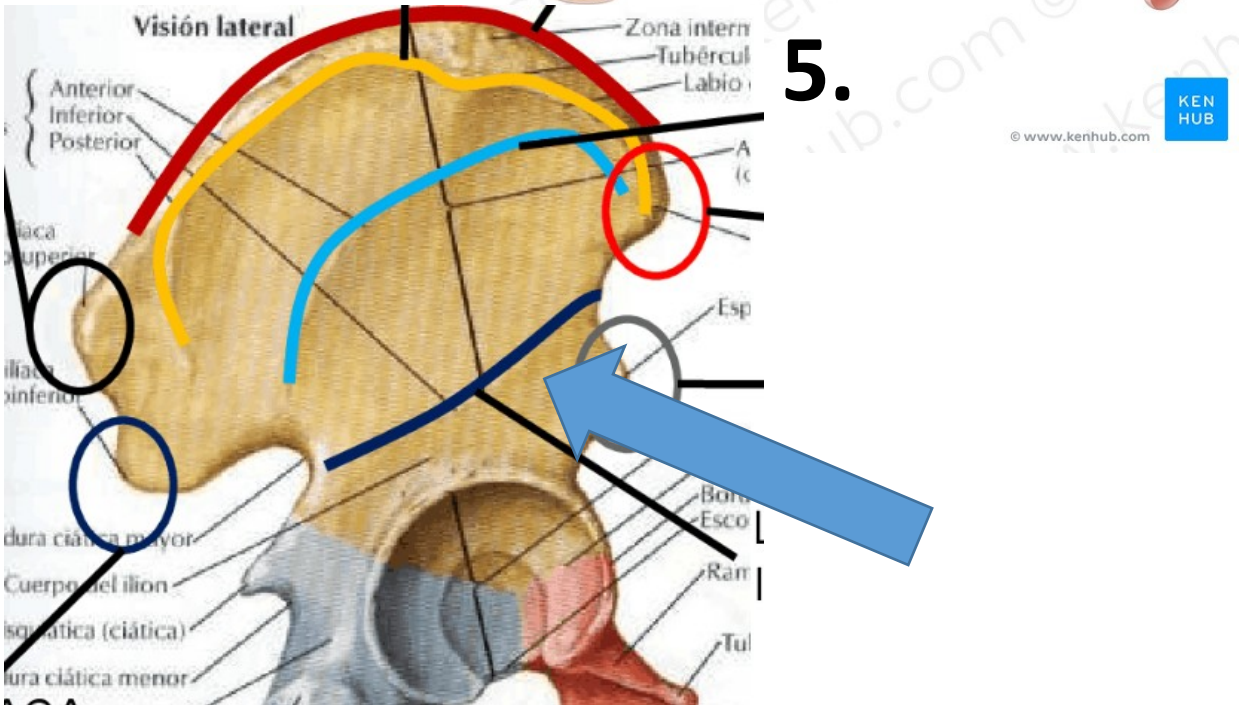
3.



4.



5.



Gratias pro audientia agemus

- Fractura tibiae **L**ateris sin
- Glandula **supr**Arenalis
- Meatus acusticus **exT**ernus
- Haemorrhagia **Intra**cranialis
- Linea glutea **iN**ferior