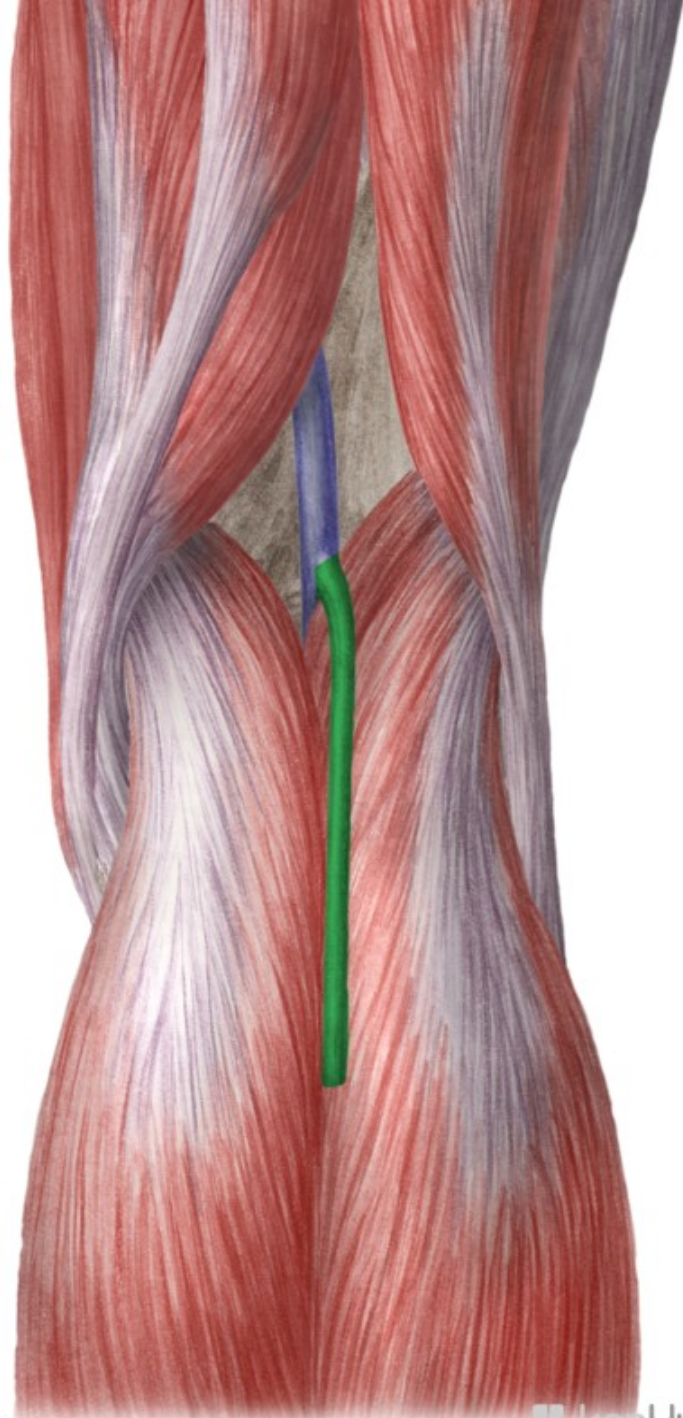
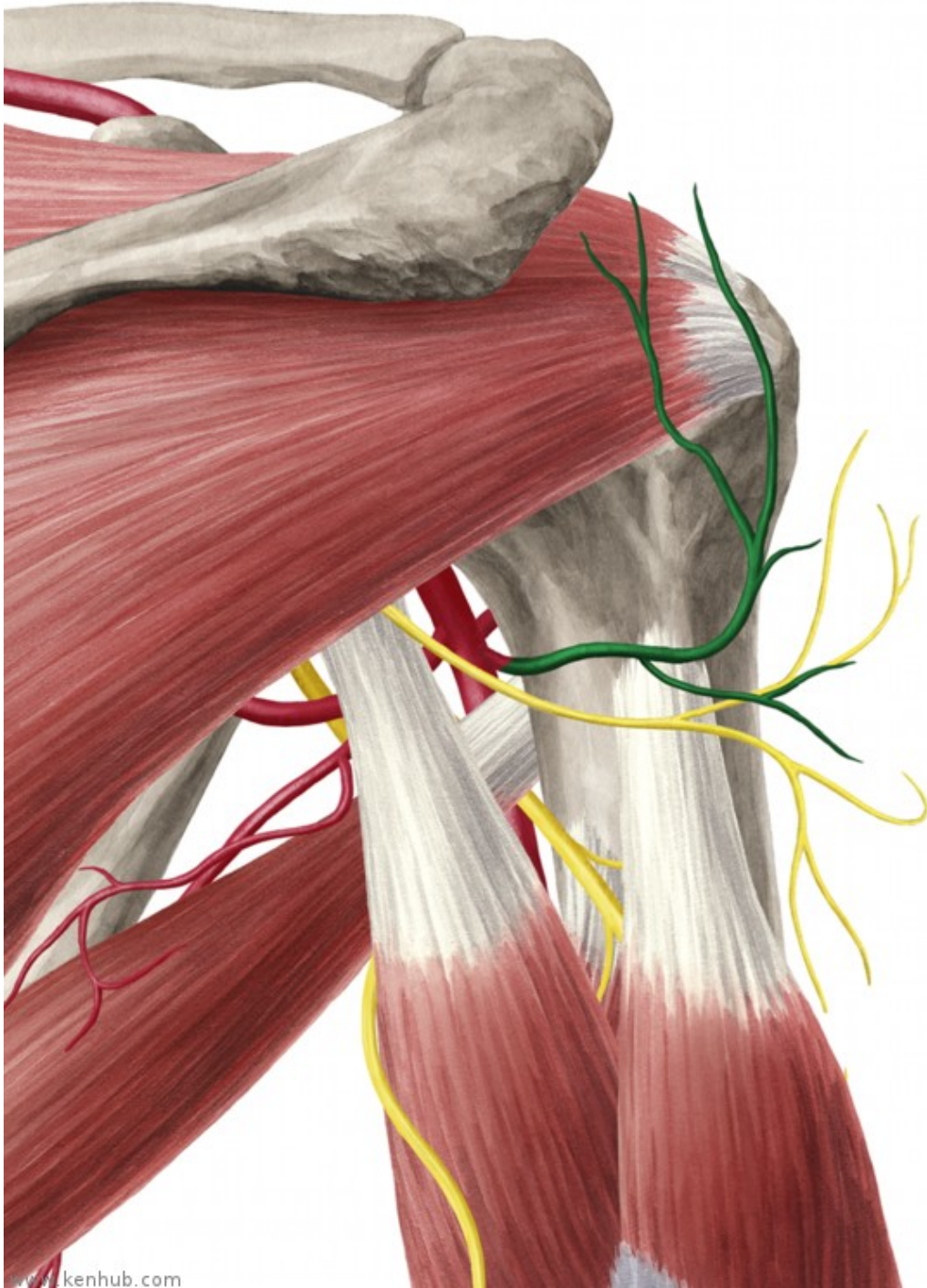
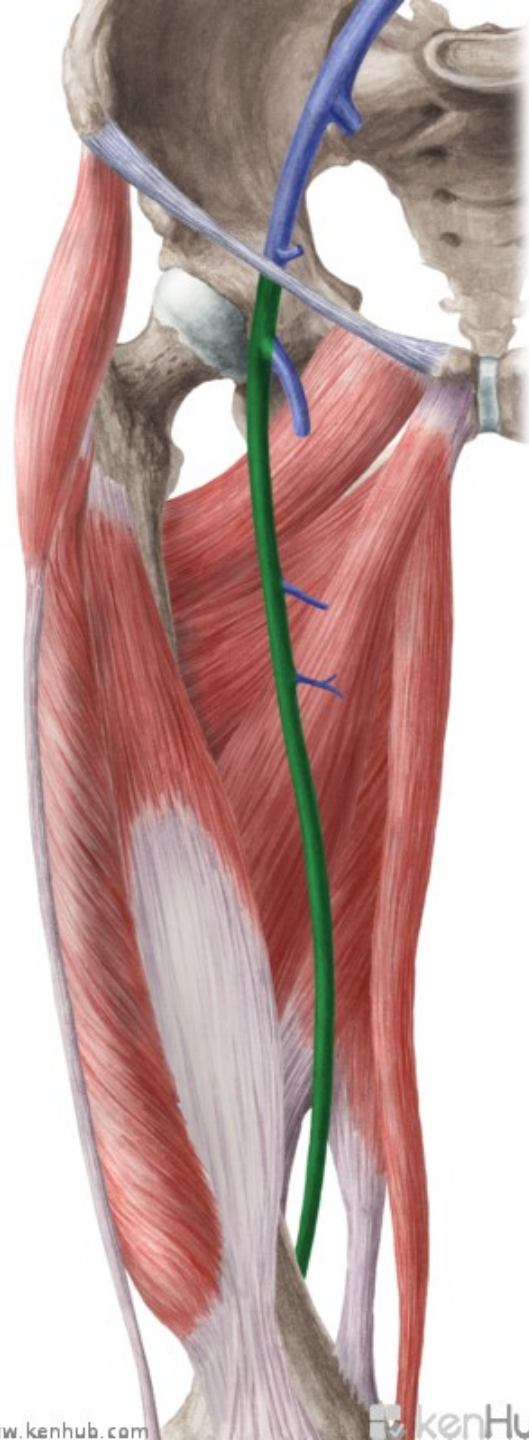


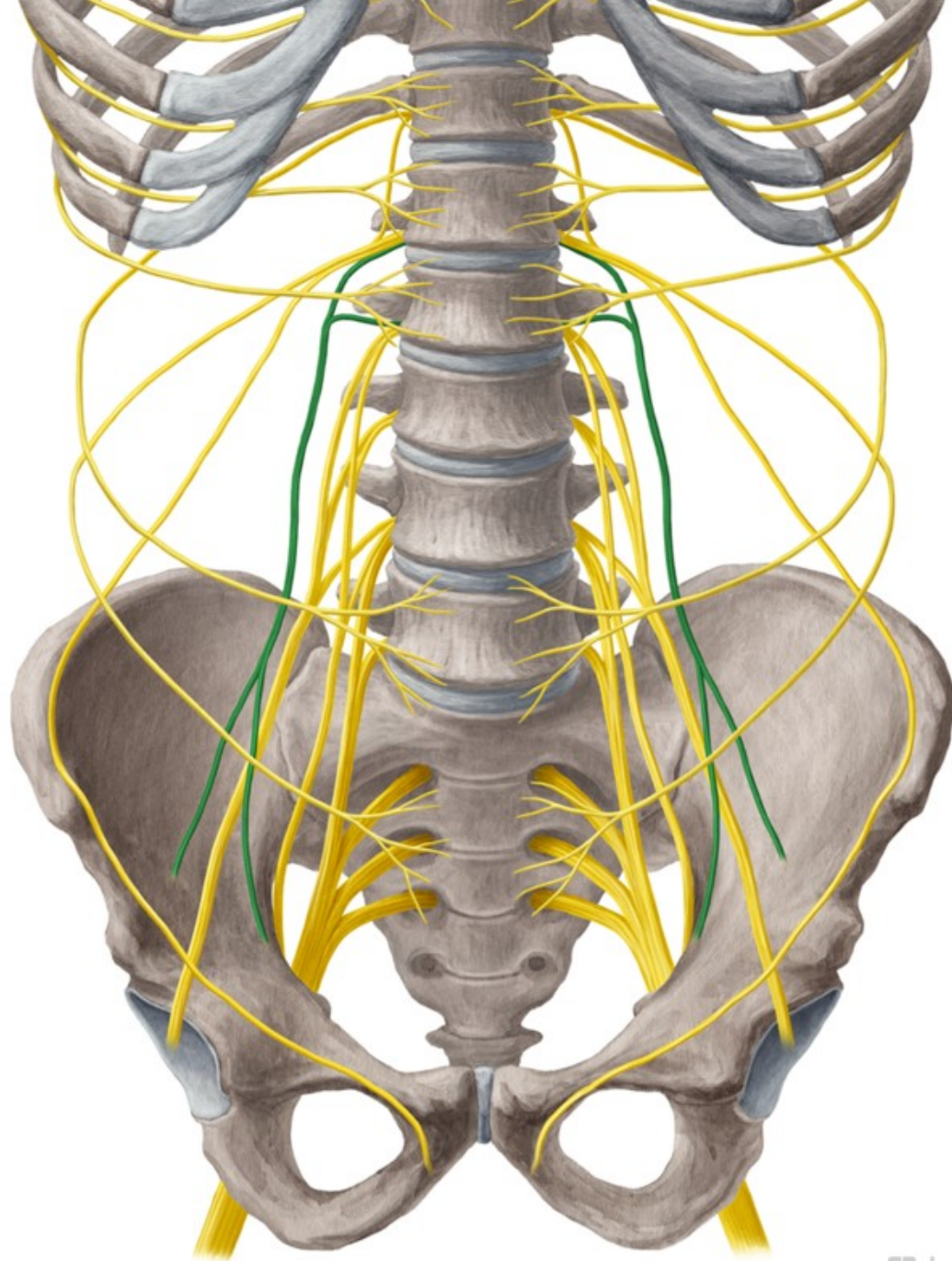
1



2



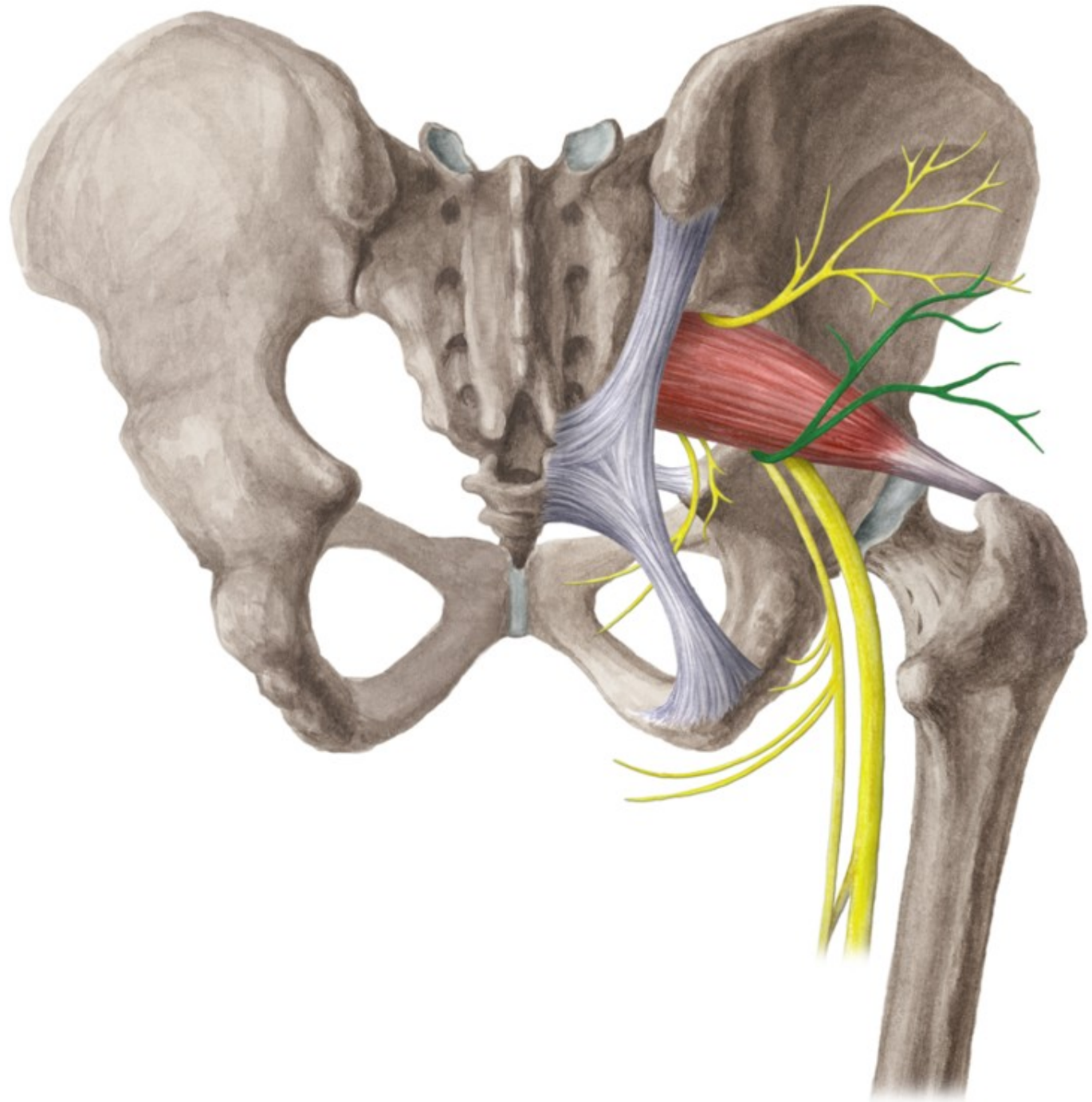




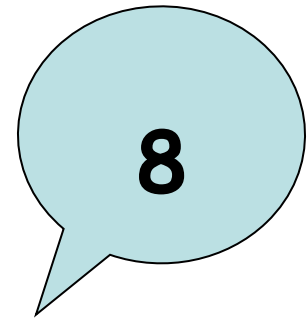
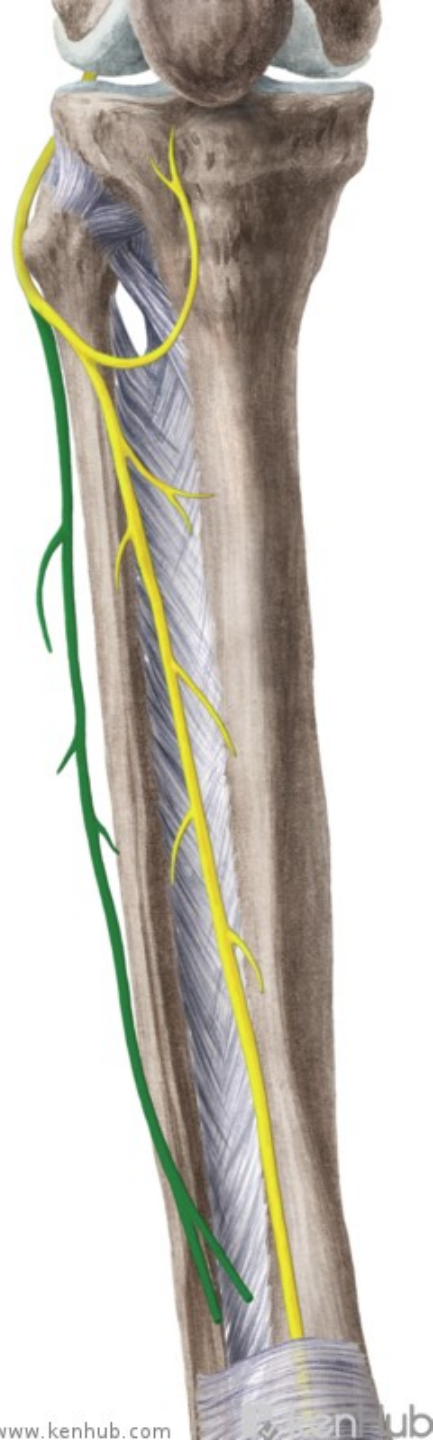
5



6



7

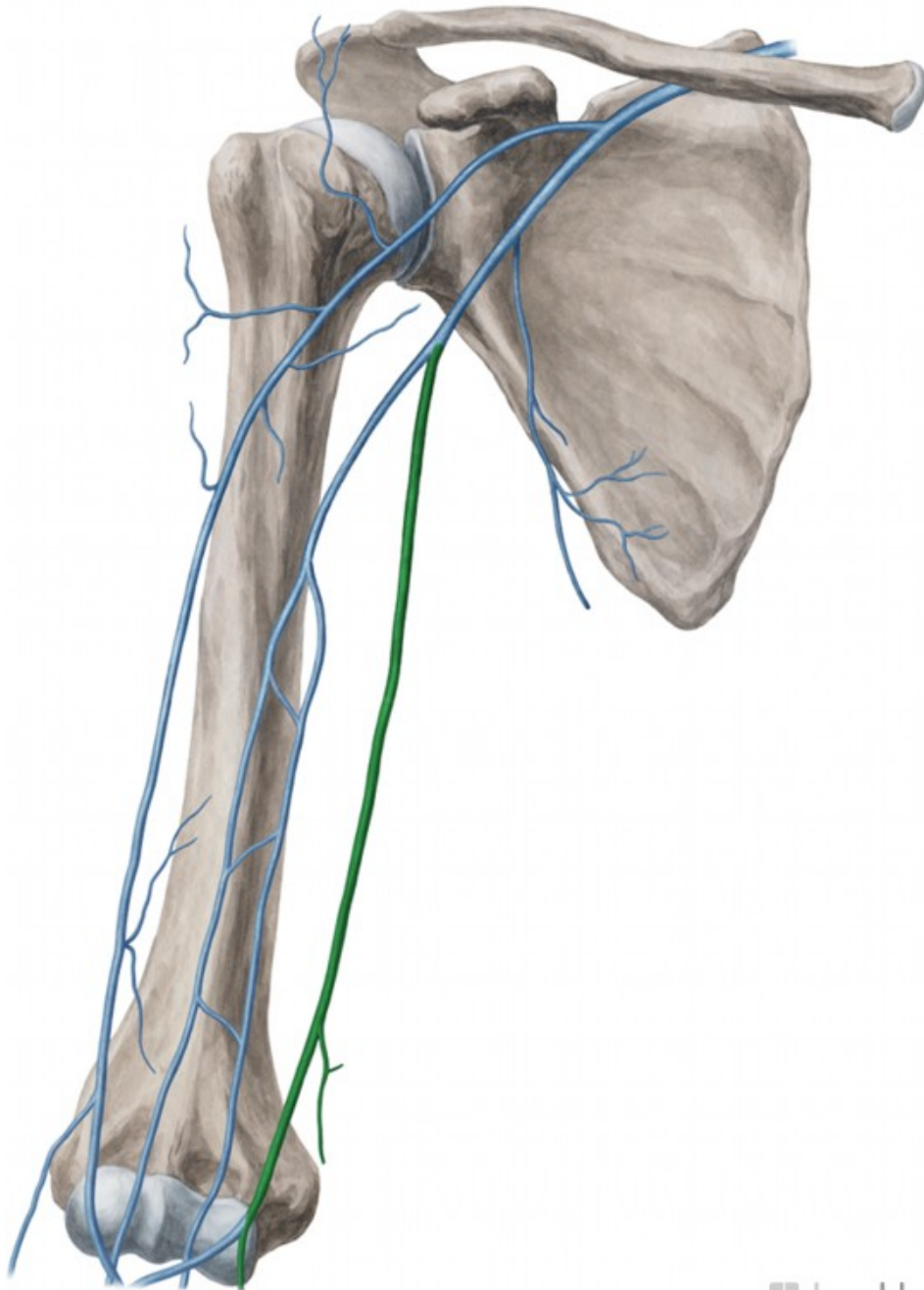




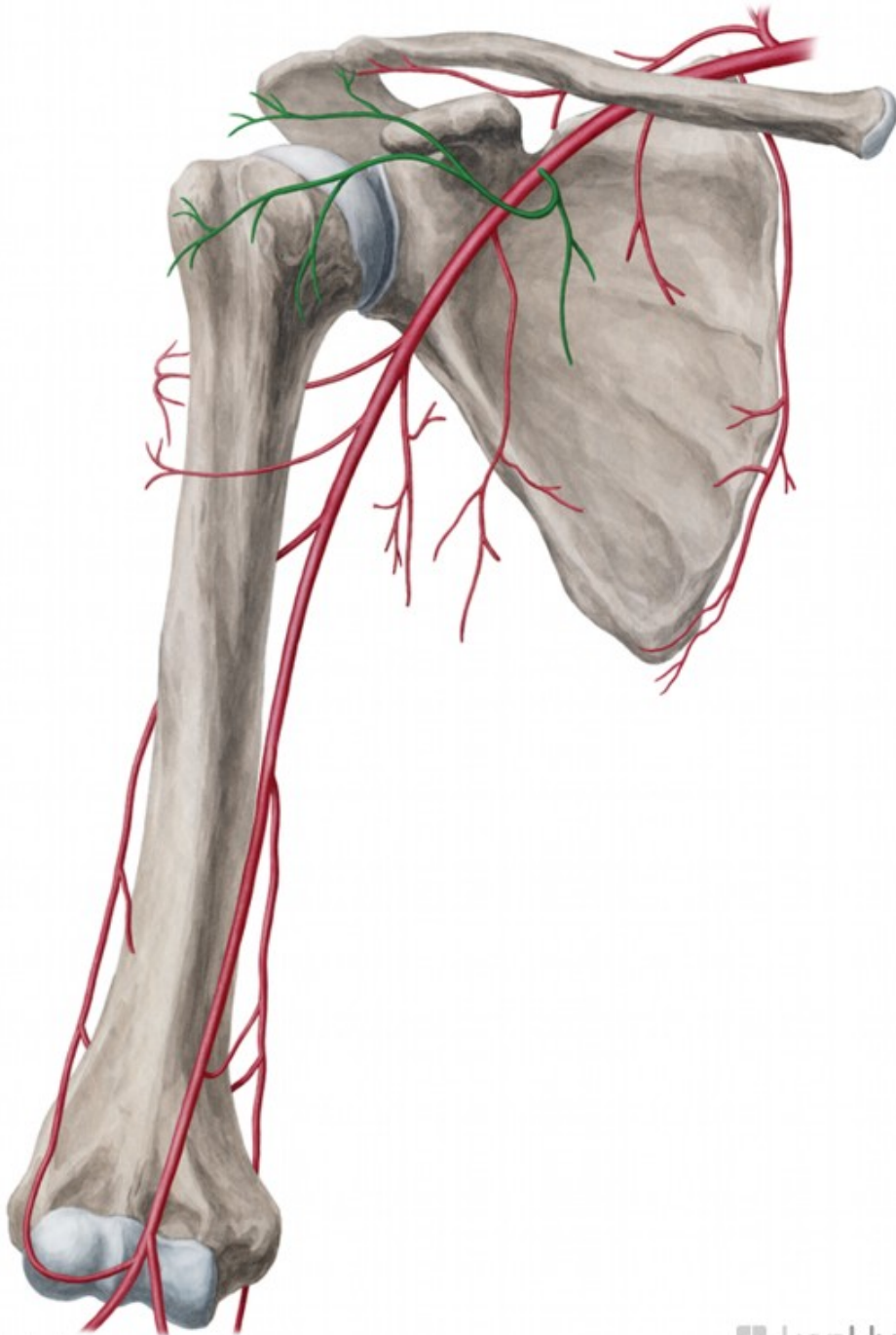




10

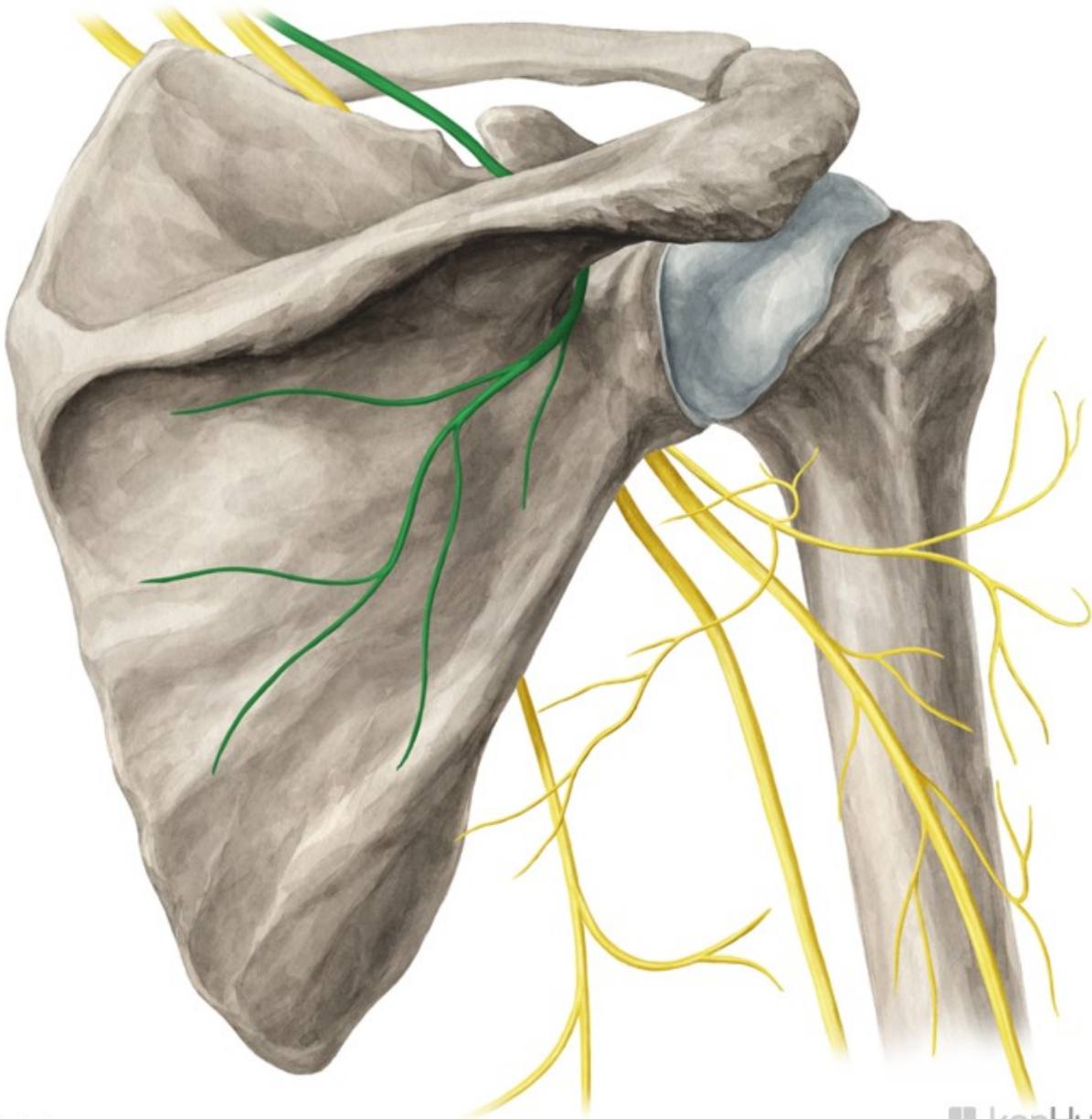


11



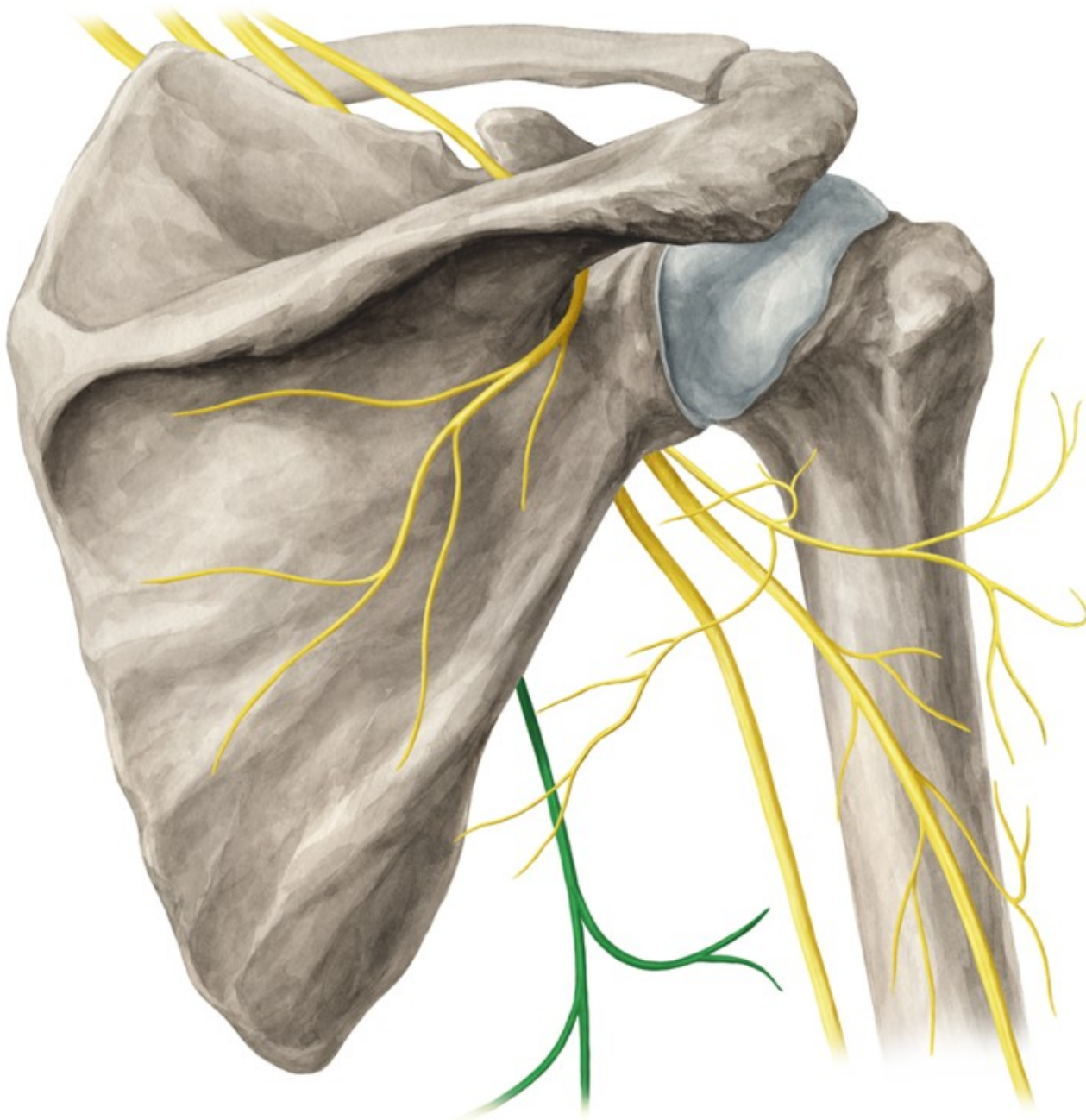
12

13





14



15

- 1) a. ulnaris
- 2) v. saphena parva
- 3) a. circumflexa humeri posterior
- 4) v. femoralis
- 5) n. genitofemoralis
- 6) a. tibialis anterior
- 7) n. gluteus inferior
- 8) n. peroneus superficialis
- 9) a. profunda brachii
- 10) n. cutaneus antebrachii medialis



- 11) v. basilica
- 12) a. thoracoacromialis
- 13) n. suprascapularis
- 14) a. tibialis posterior
- 15) n. thoracodorsalis