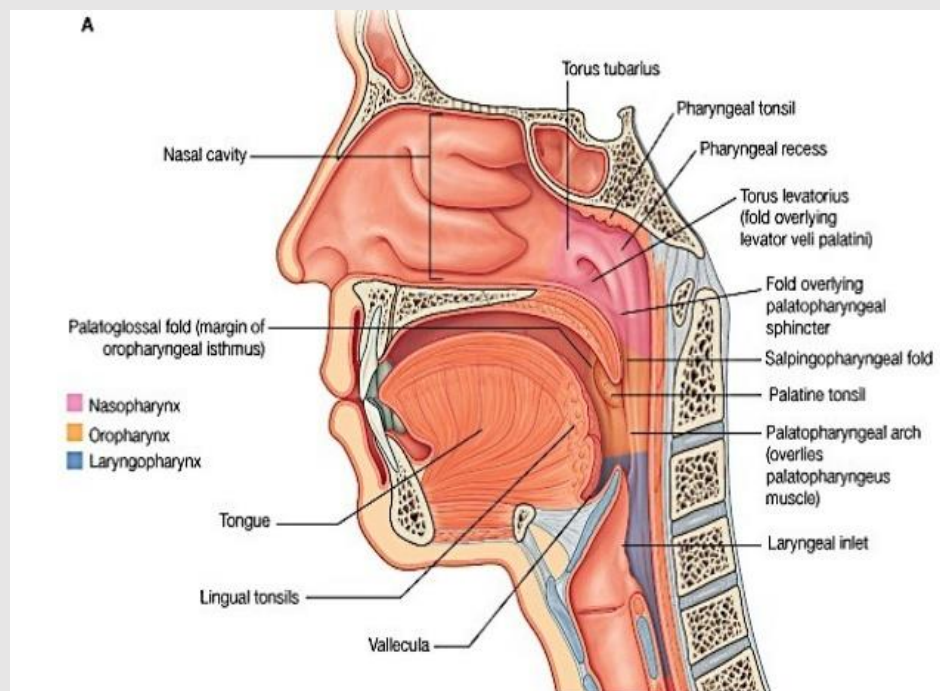


# Trávicí systém I

# Dutina ústní

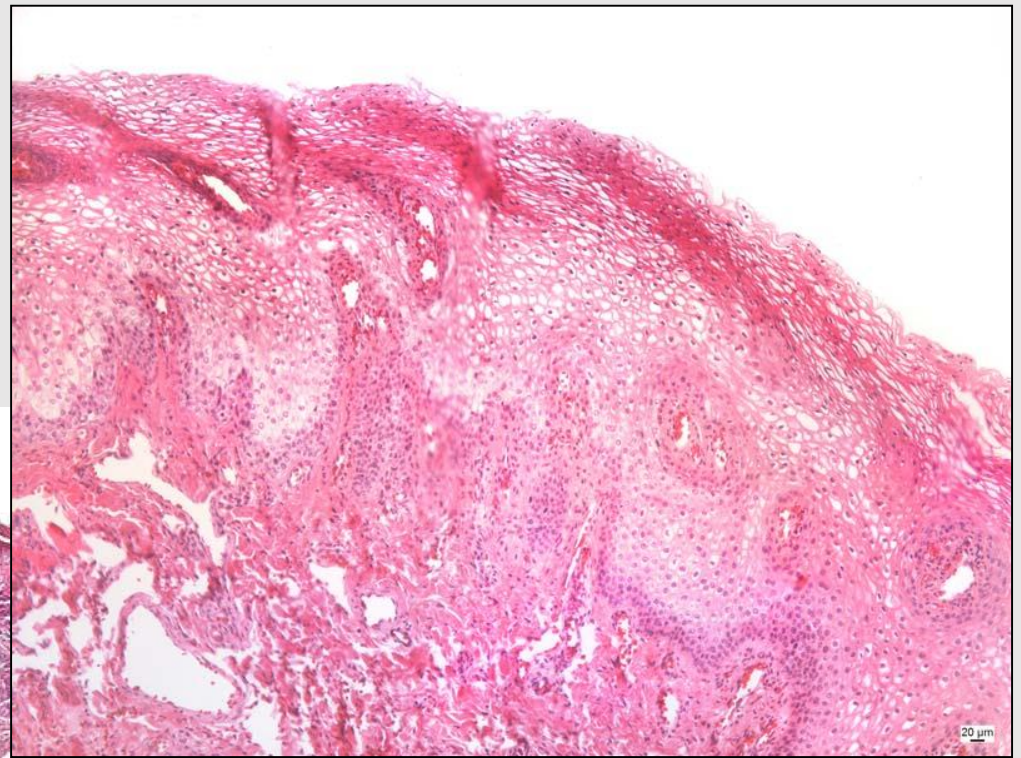
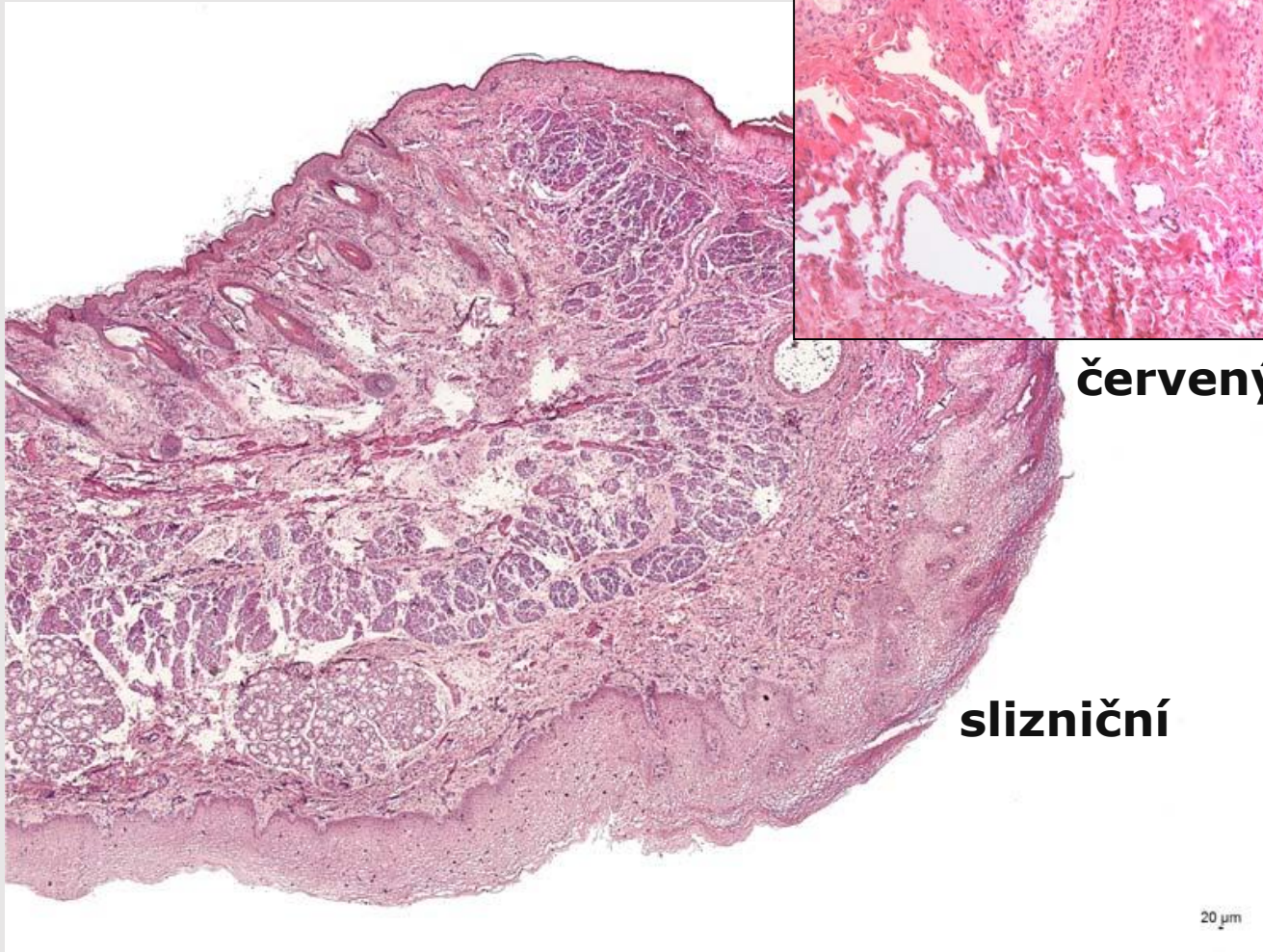
- stěny
  - rty
  - tváře
  - tvrdé a měkké patro
  - spodina dutiny ústní
- obsah
  - jazyk
  - zuby
  - dásěň
  - mandle
- slinné žlázy



Hltan (pharynx)  
Jícen (oesophagus)

# Labium oris

**kožní**



**červený lem rtu**

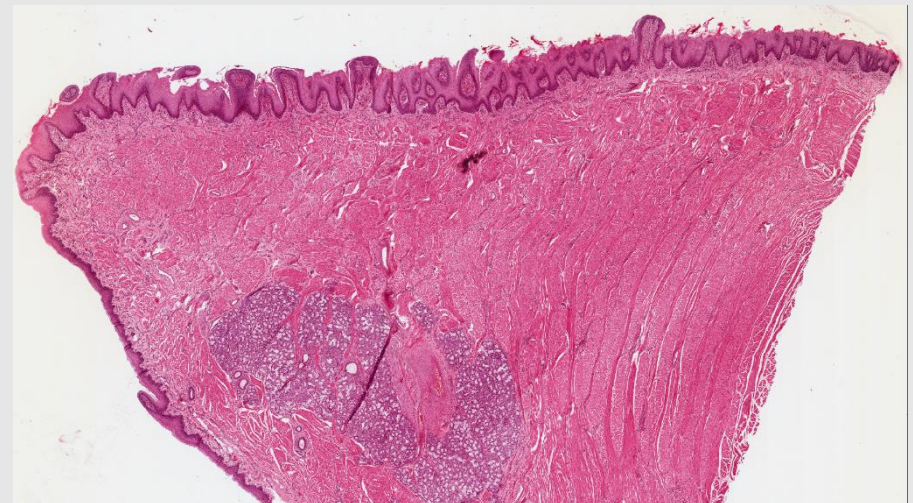
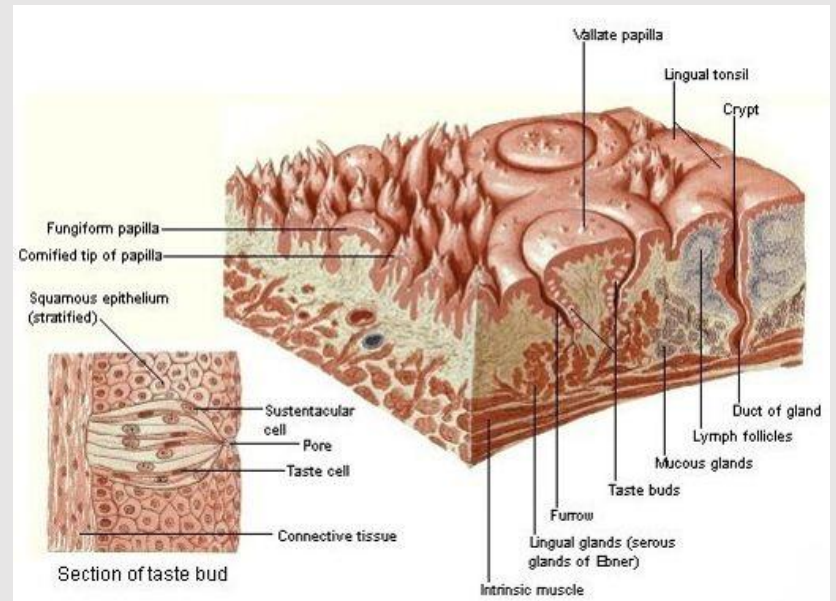
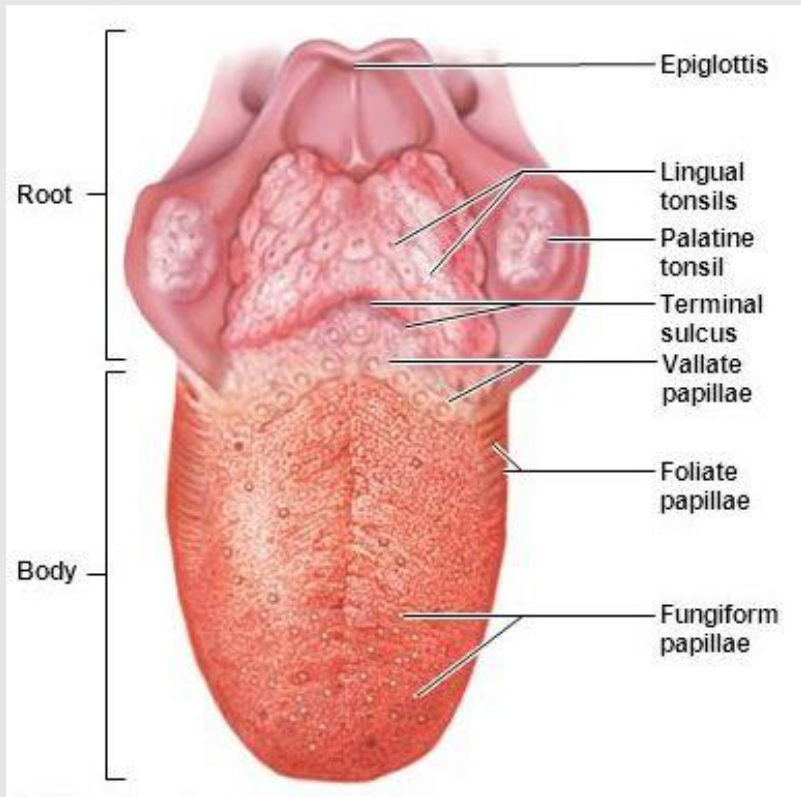
**slizniční**

sliznice=tunica mucosa  
-lamina epithelialis  
-lamina propria  
-(lamina muscularis)

20 μm

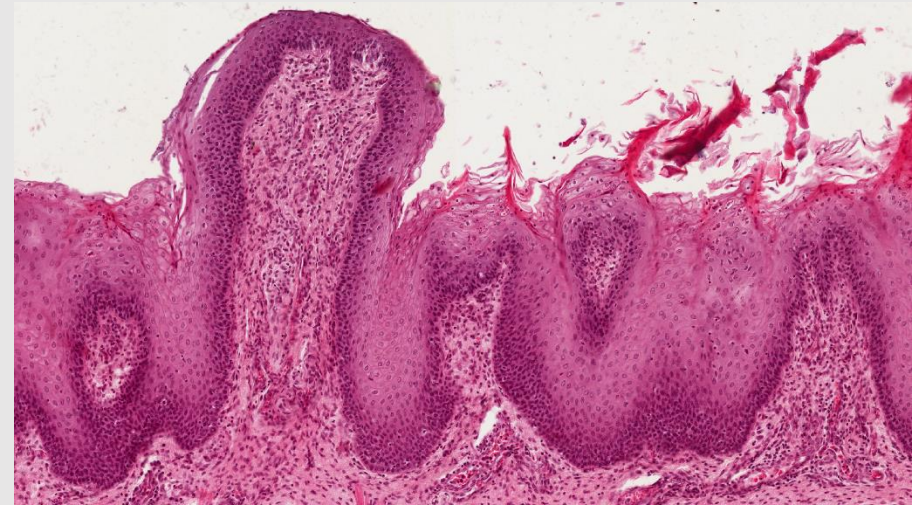
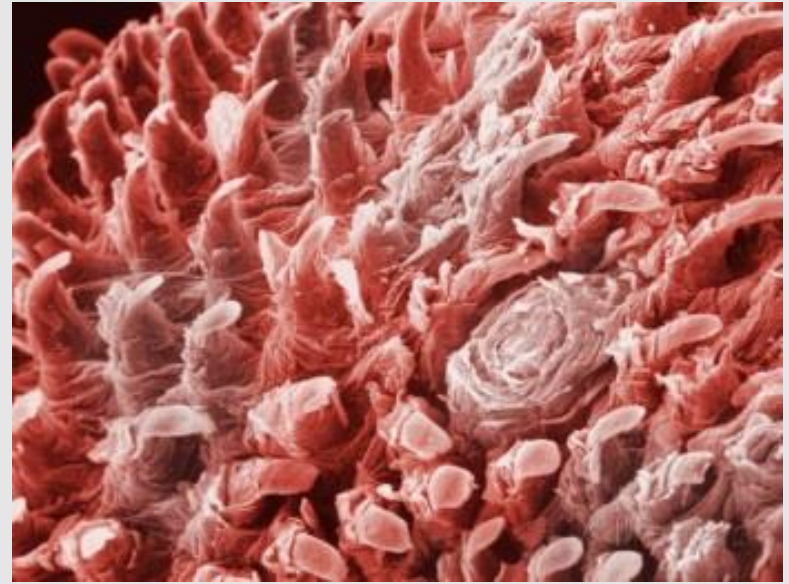
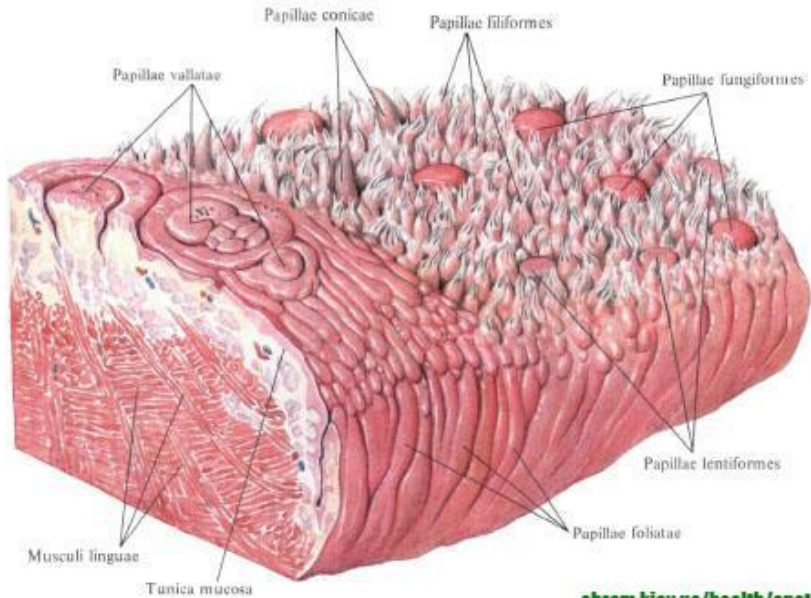


# Jazyk (lingua)



apex linguae

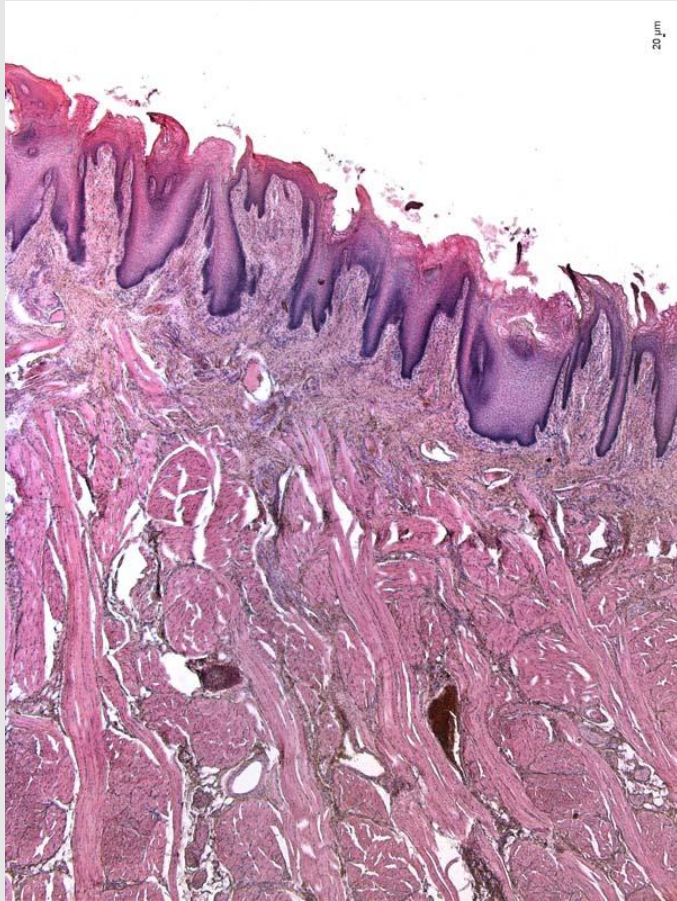
# Dorsum linguae



papillae filiformes  
papillae fungiformes  
papillae foliatae  
papillae vallatae



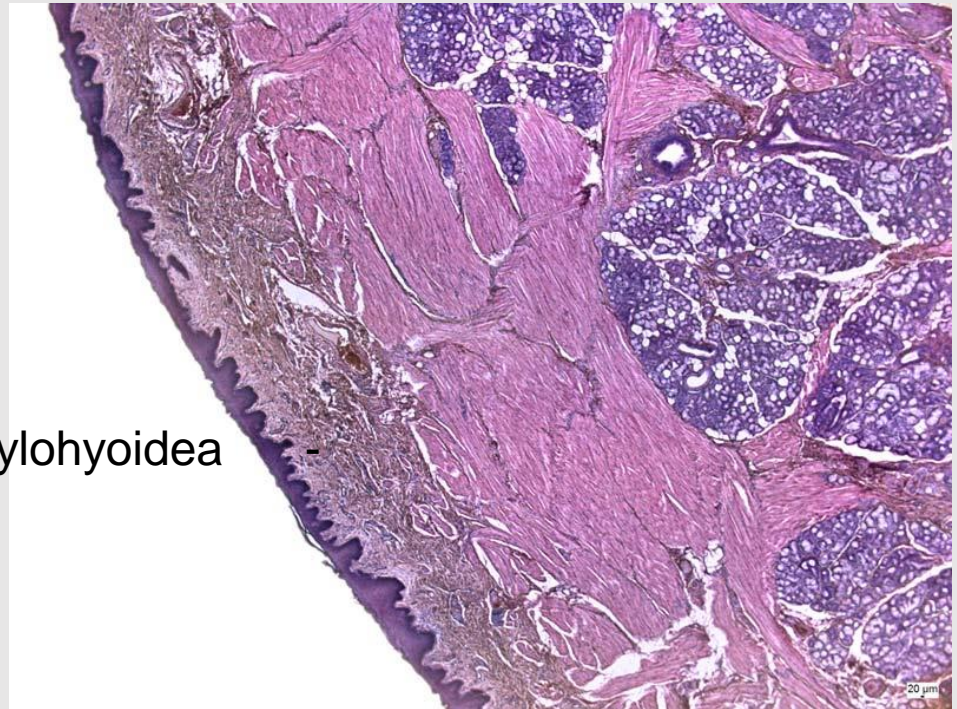
# Apex linguae



sliznice=tunica mucosa  
-lamina epithelialis  
-lamina propria  
-(lamina muscularis)

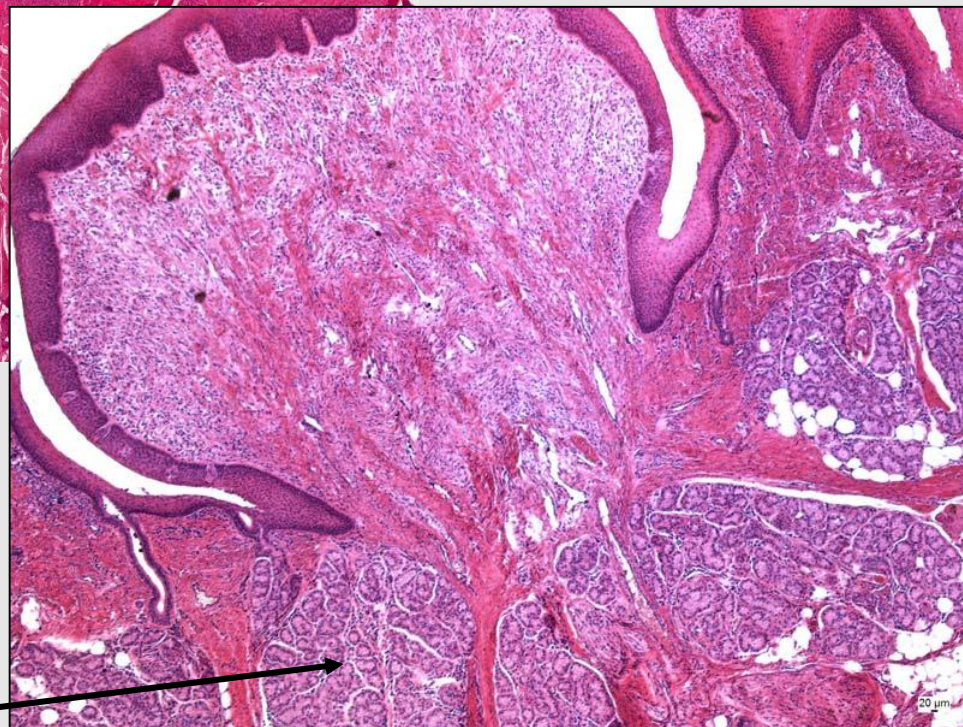
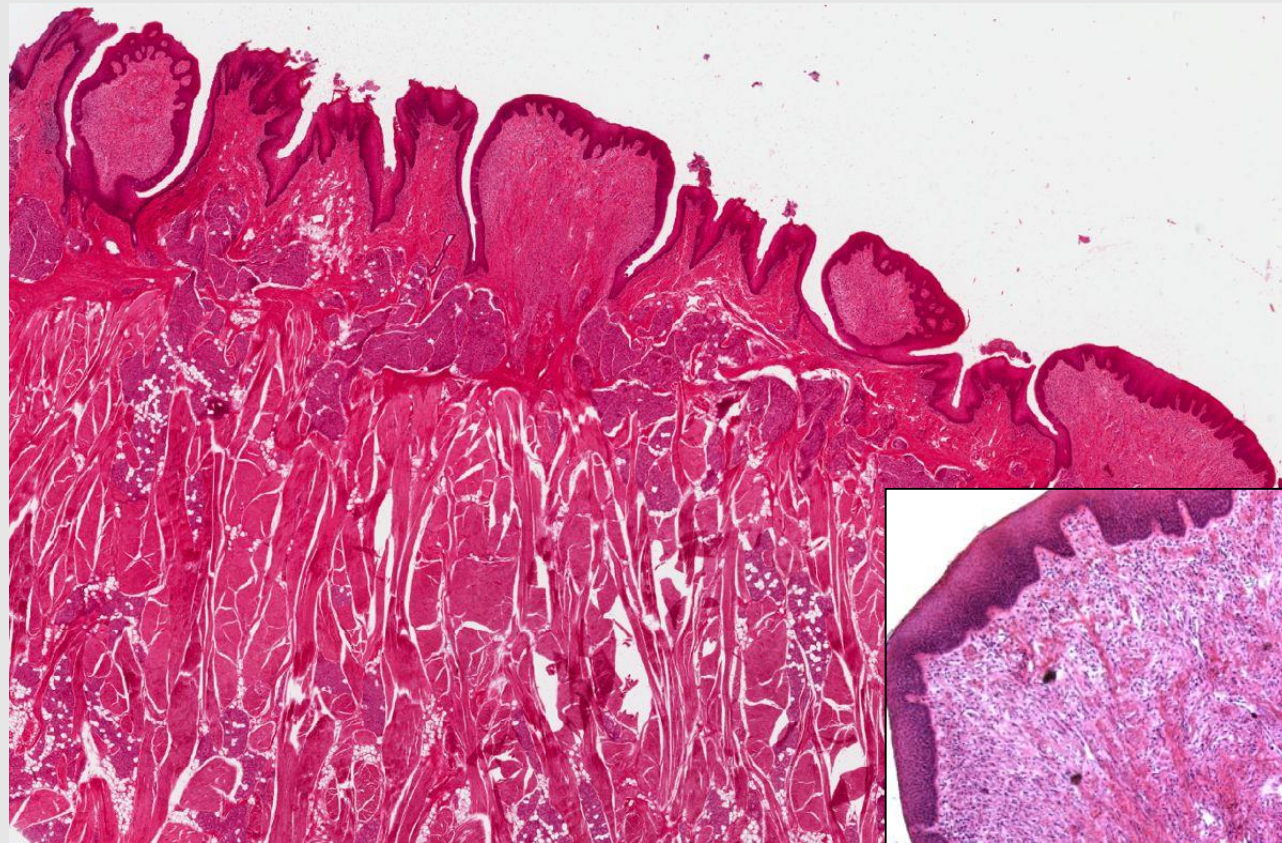
**gll. apicis linguae - Blandini**

facies mylohyoidea  
inferior

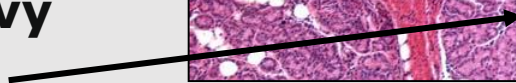




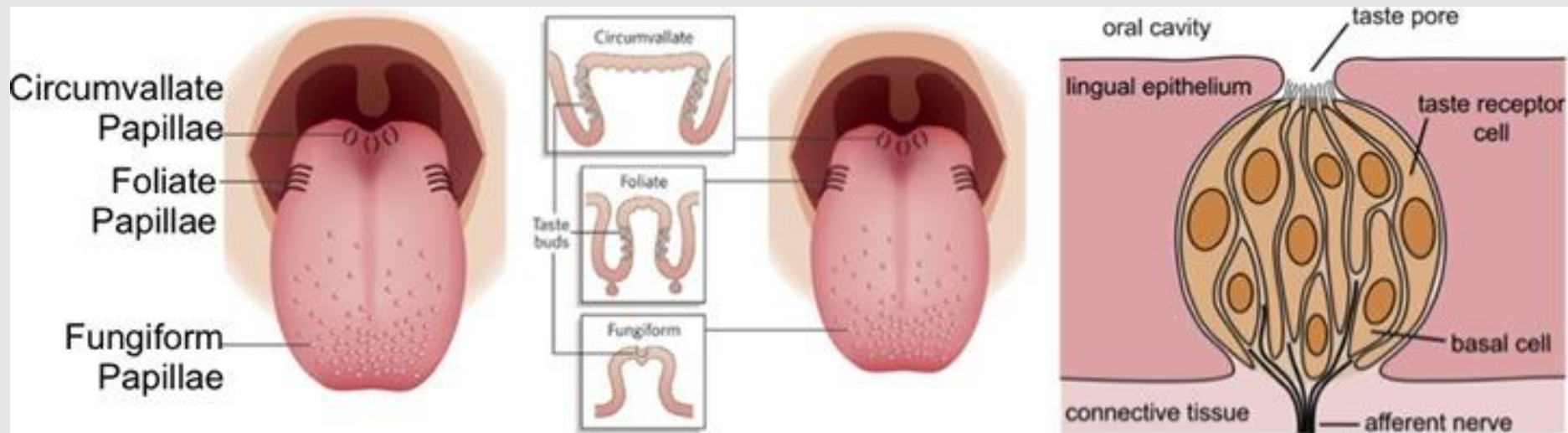
# Papilla vallata



**Ebnerovy**  
žlázy



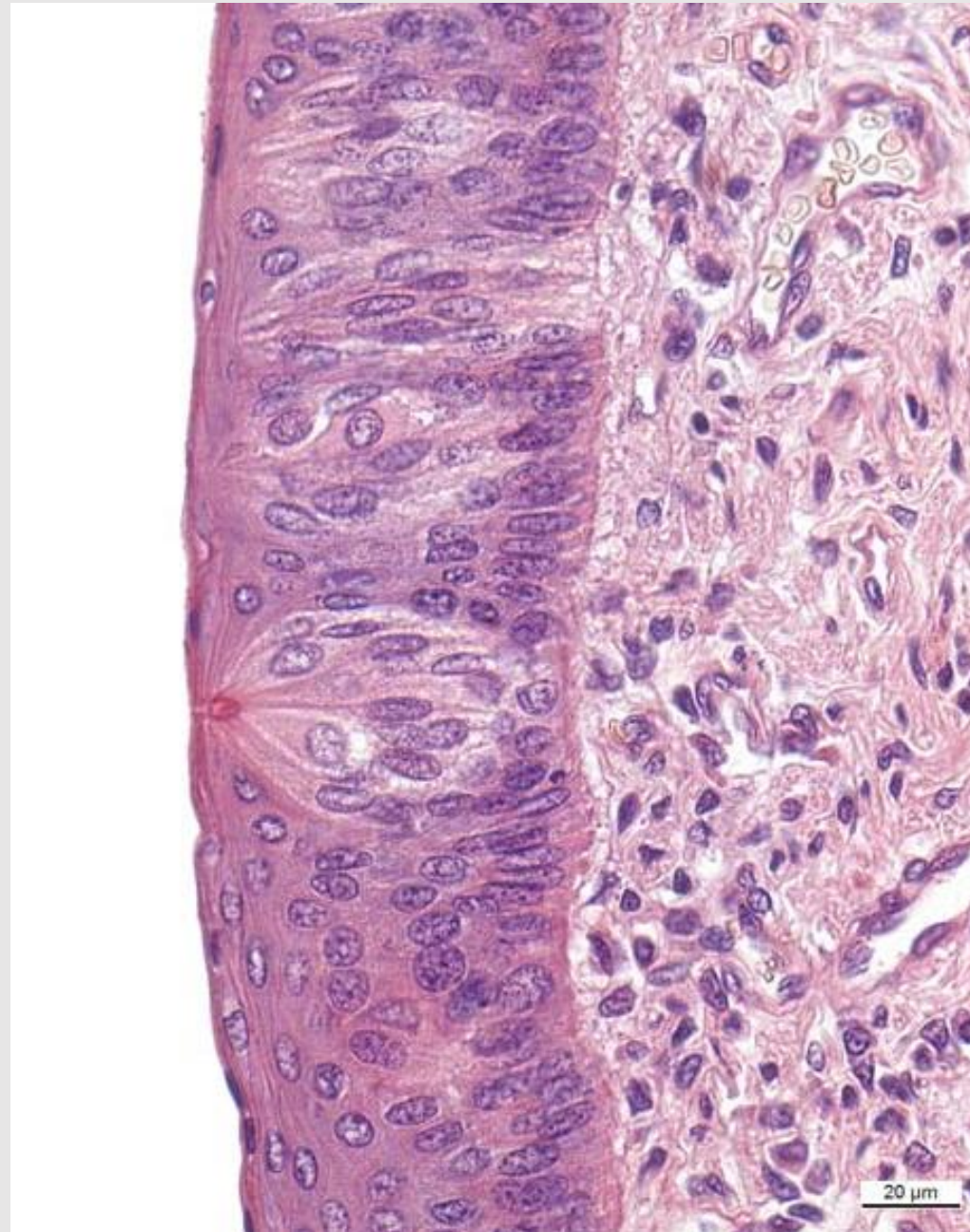
# Chuťové pohárky





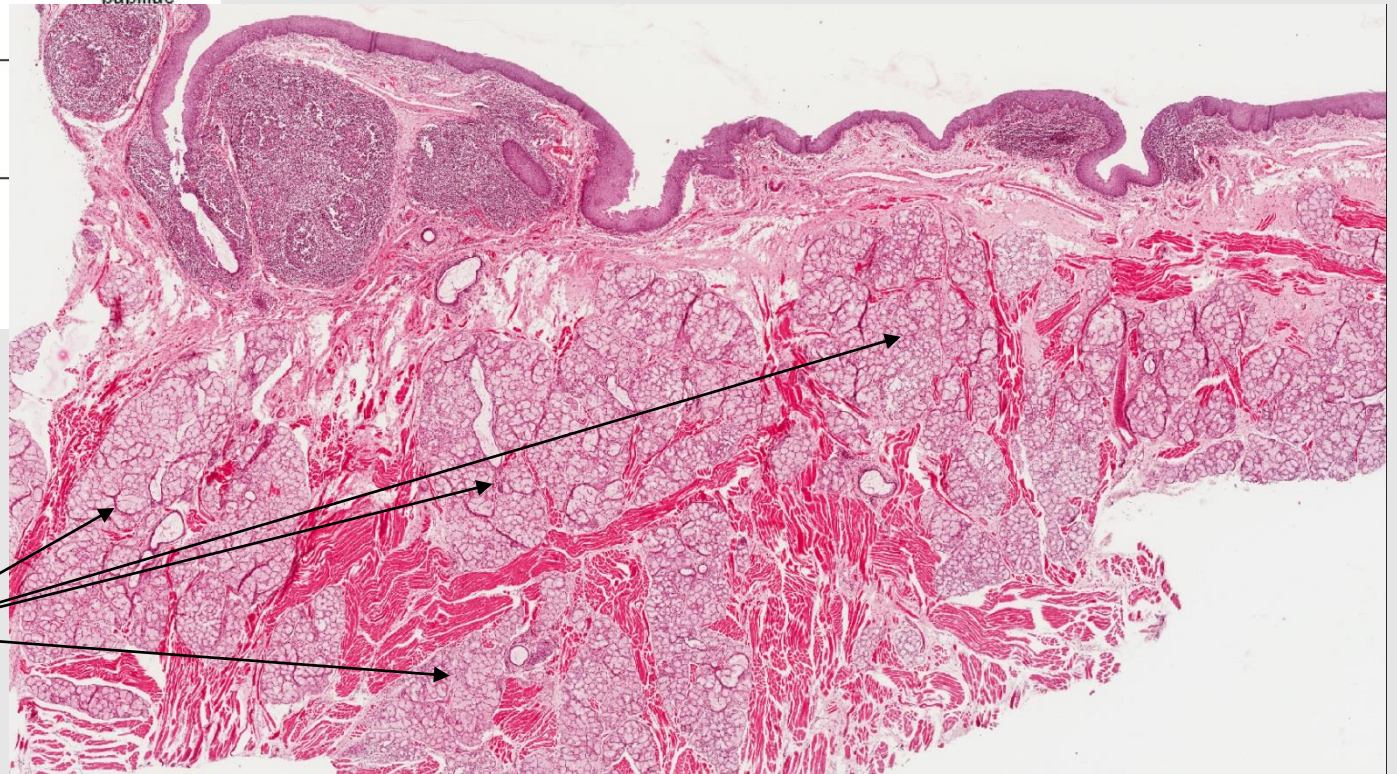
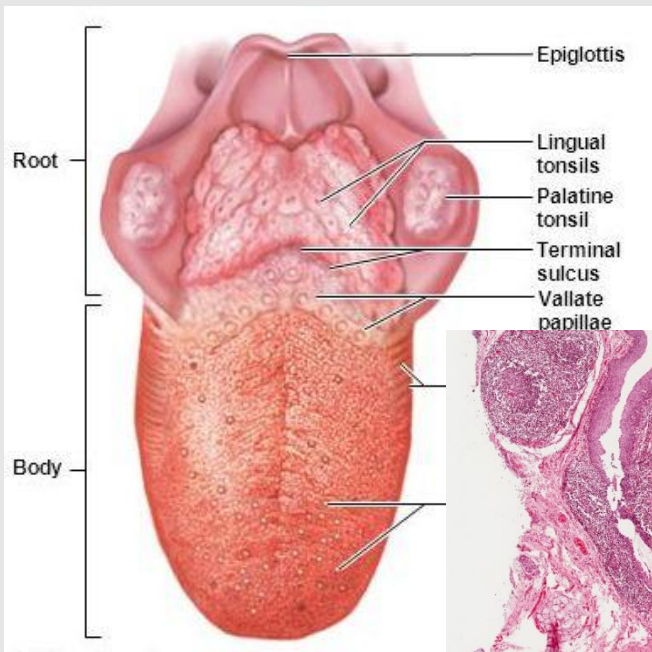
# Chuťové pohárky

- ve vrstevnatém dlaždicovém epitelu sliznici dutiny ústní a hltanu, v epitelu papil jazyka
- soudečkovité endoepitelové útvary, štíhlé buňky nedosahují úplně k povrchu epitelu → *porus gustatorius*
- smyslový epitel (primární nebo sekundární??)
- 3 typy buněk
  - smyslové
  - podpůrné /2 typů/
  - bazální





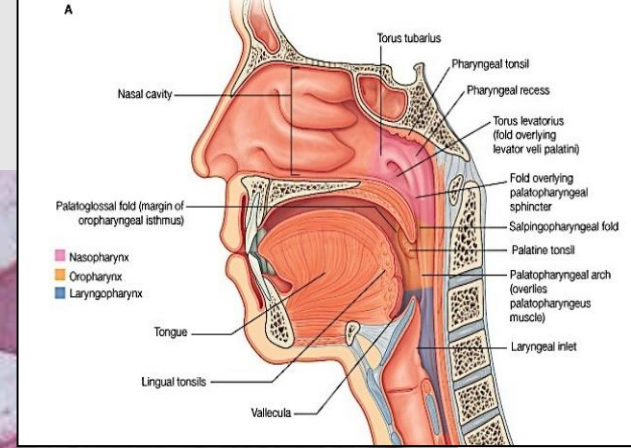
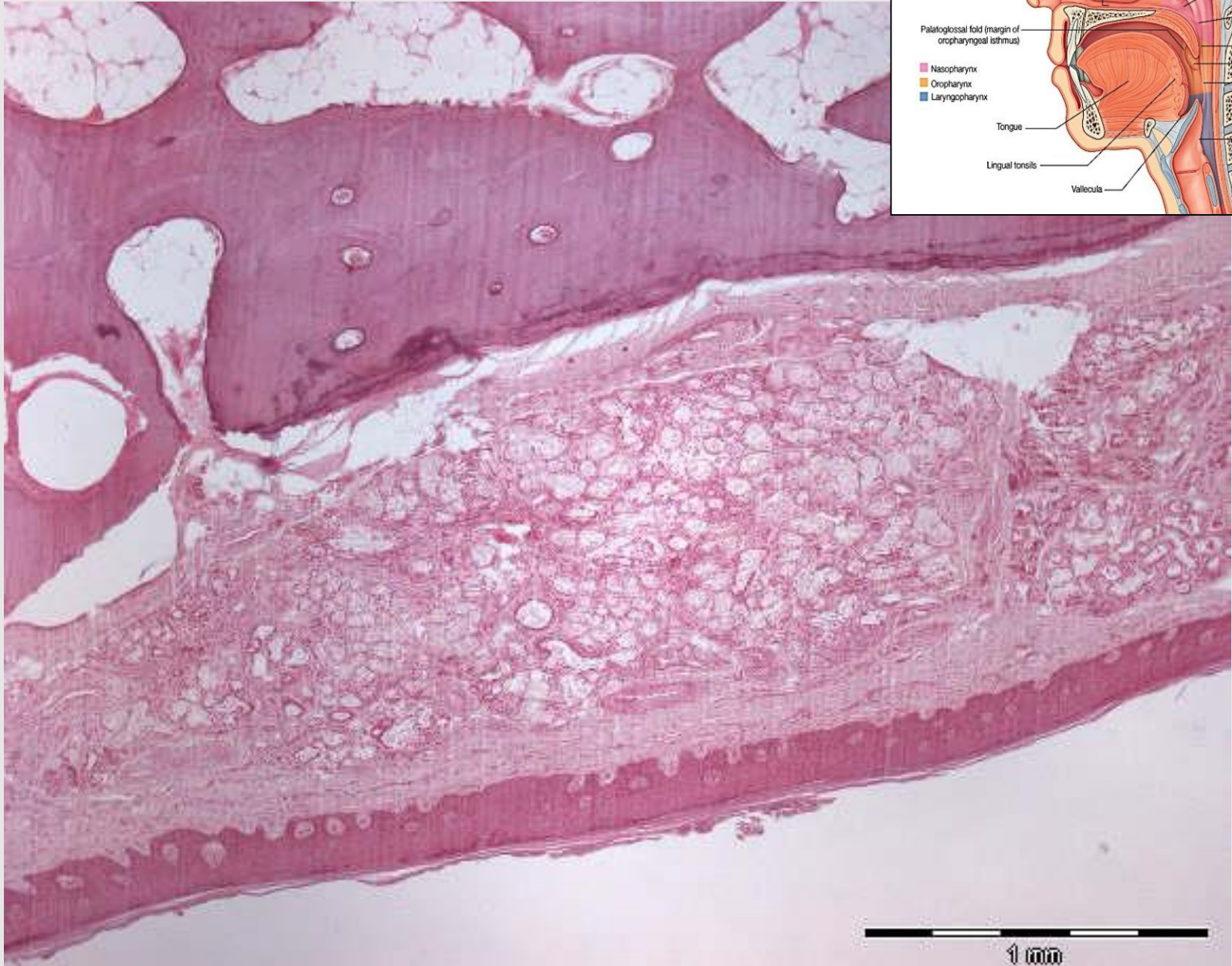
# Radix linguae – tonsilla lingualis



Weberovy  
žlázy

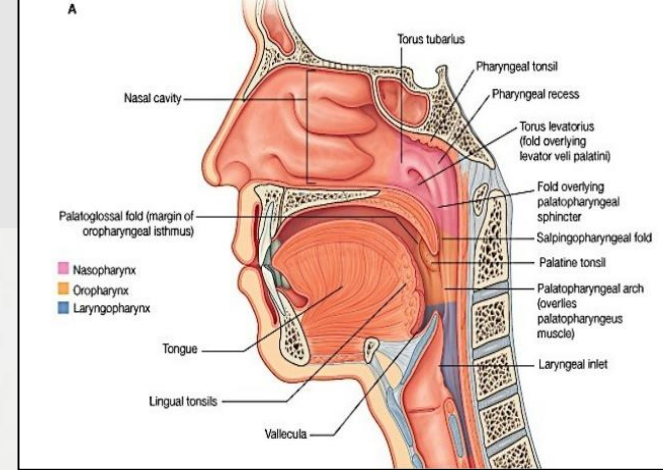
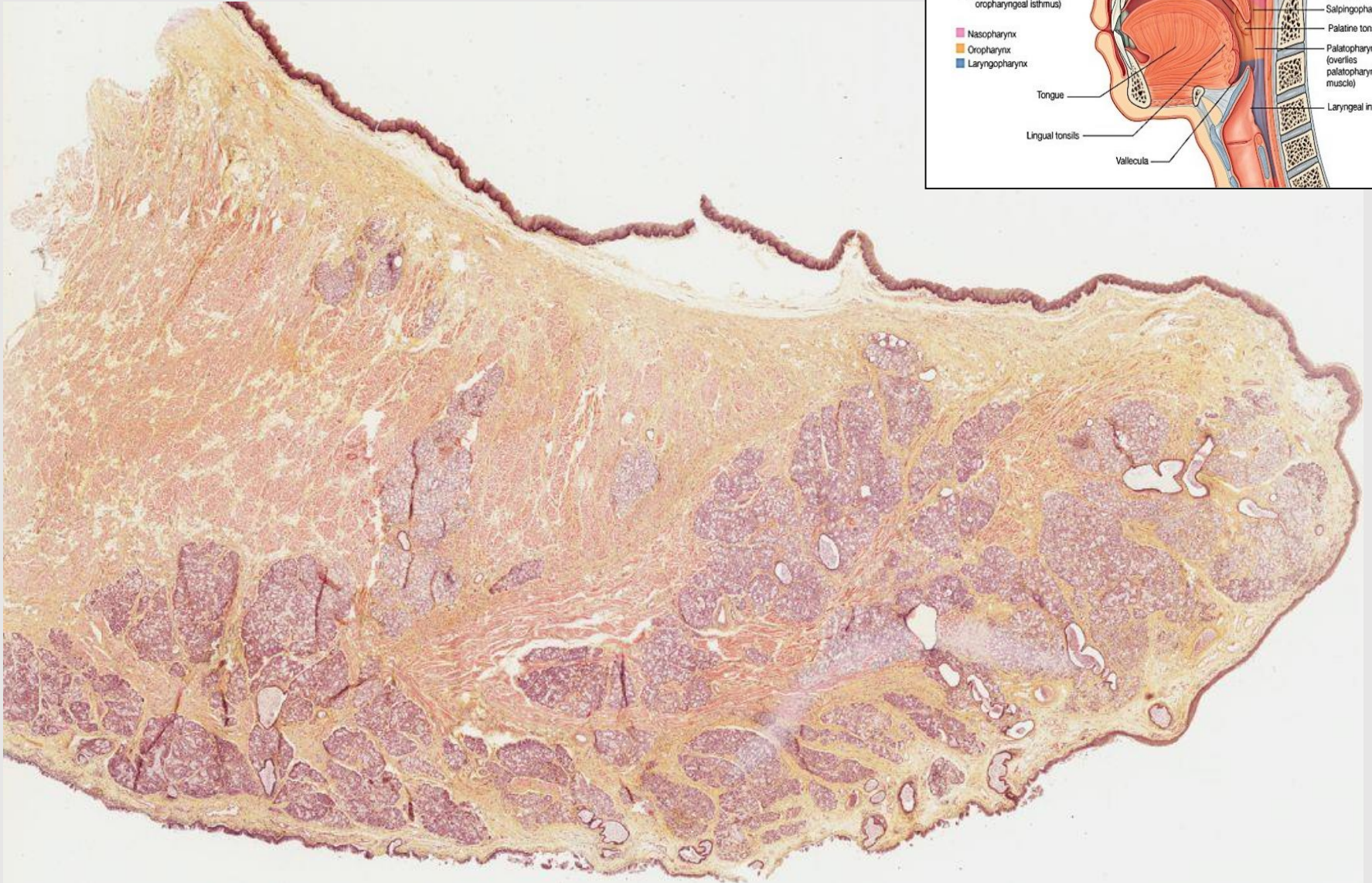


# Palatum durum



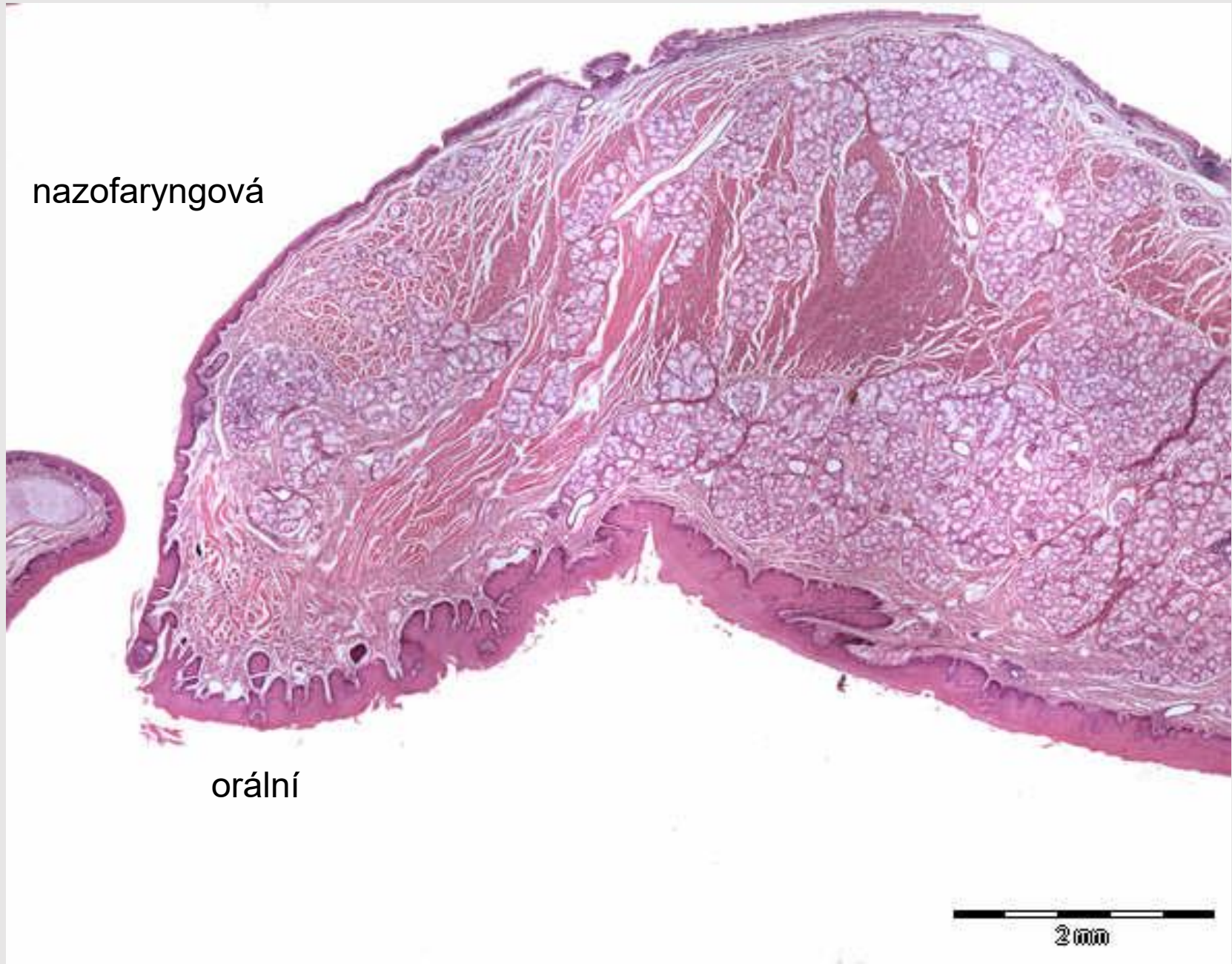


# Palatum molle



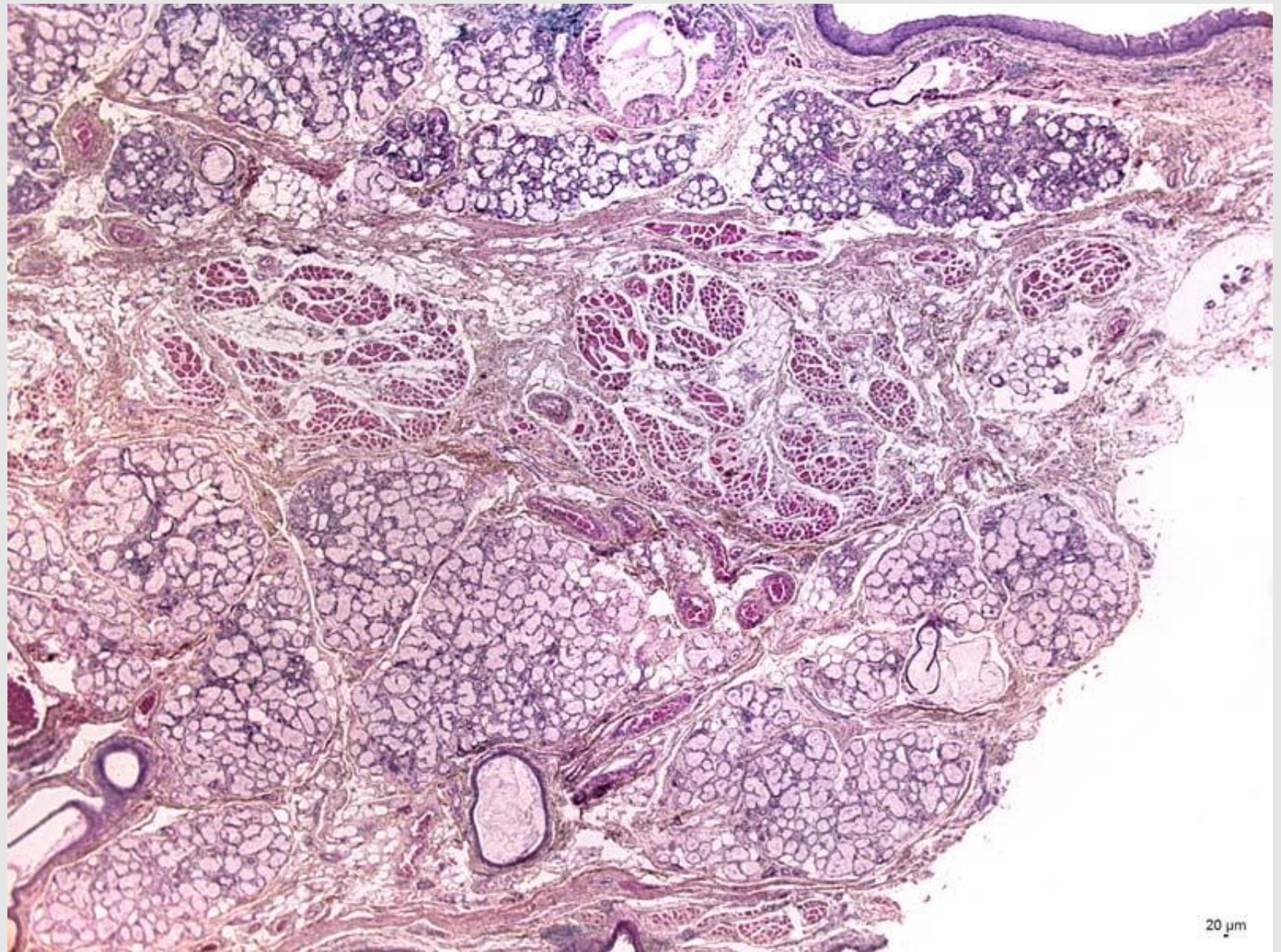


# Palatum molle





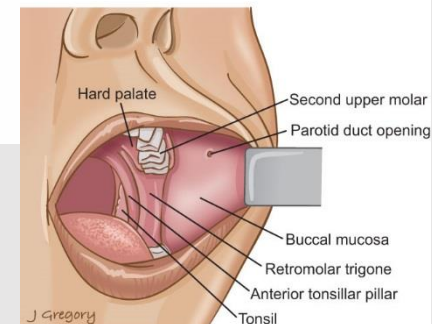
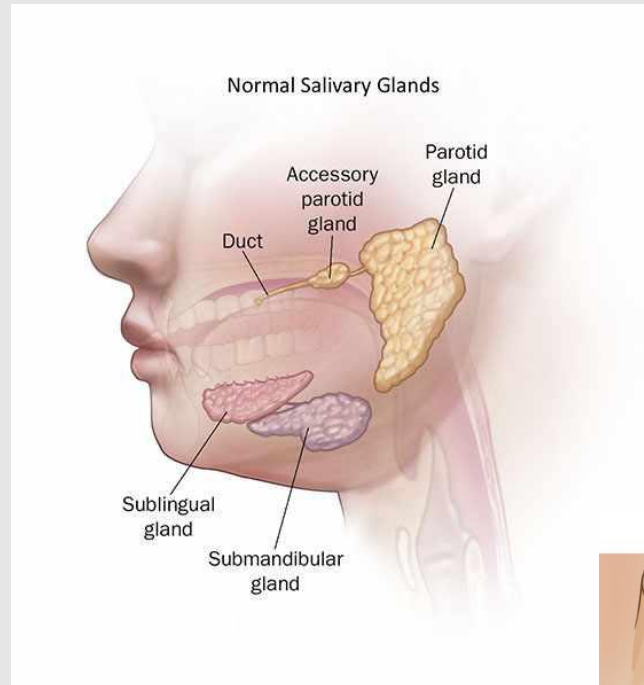
# Palatum molle





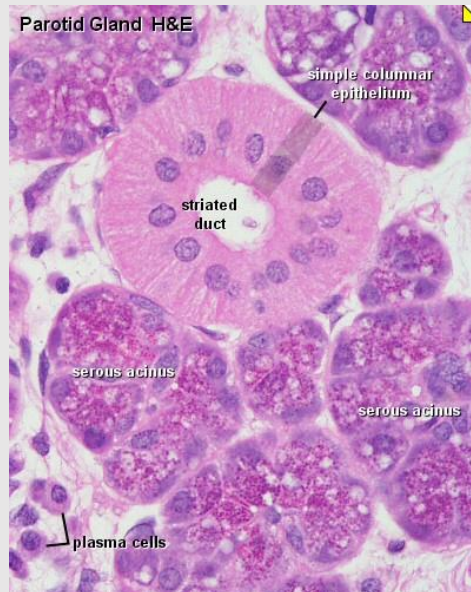
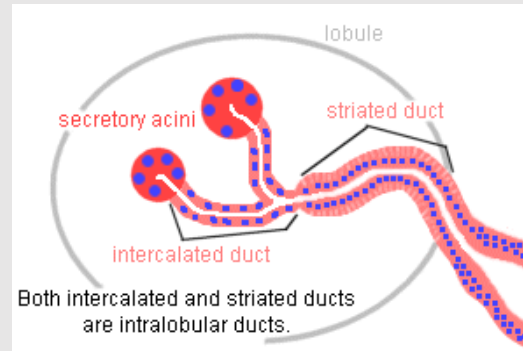
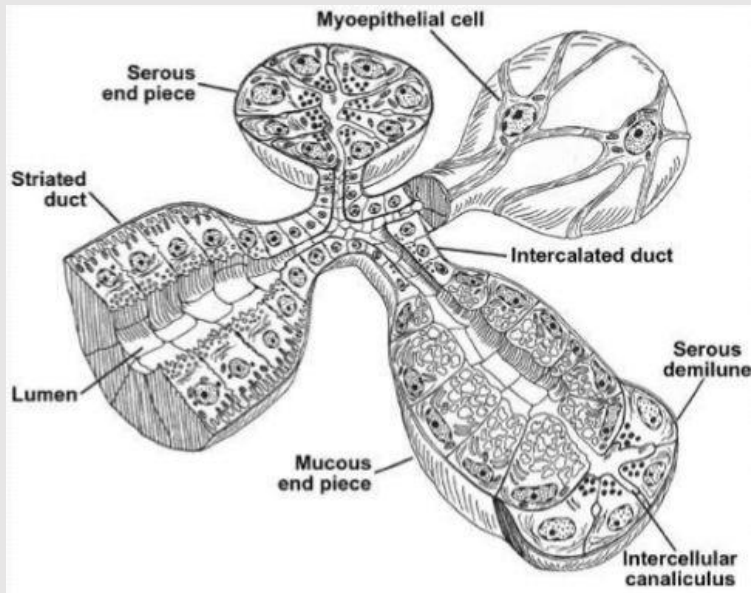
# Slinné žlázy

- velké a malé (gll. labiales, buccales, molares, palatinae, linguales)
- vazivová složka
  - pouzdro
  - septa /lalůčky/
- žláзовý parenchym /epitel/
  - sekreční oddíly
    - serózní
    - mucinózní
    - smíšené
  - žláзовé vývody



**gll. linguales – 3 typy, labiales – smíšené, buccales – smíšené, molares – smíšené, gll. palatinae (palatum durum i palatum molle) - mucinózní**

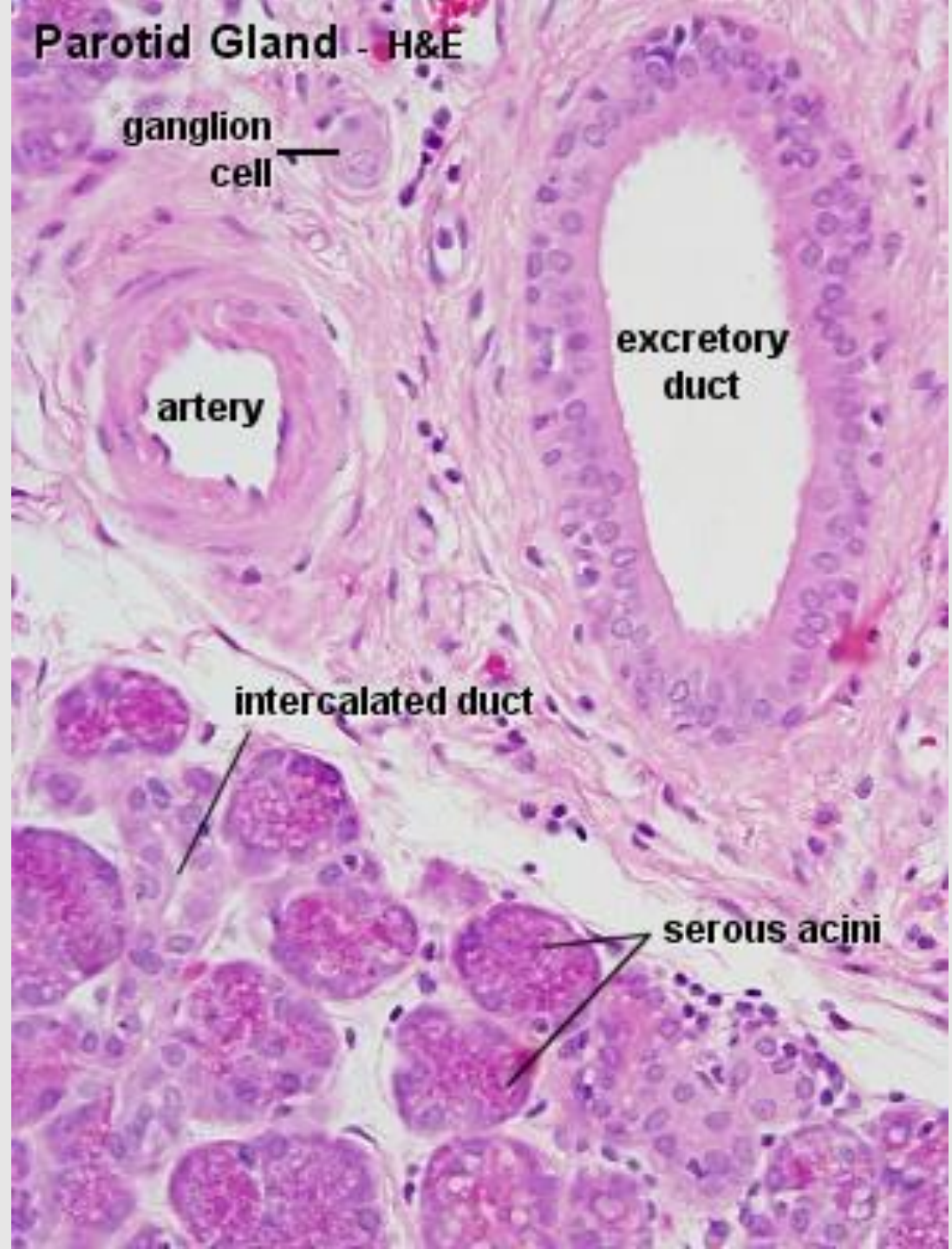
# Slinné žlázy





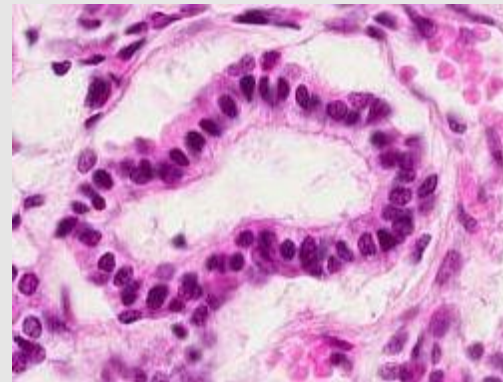
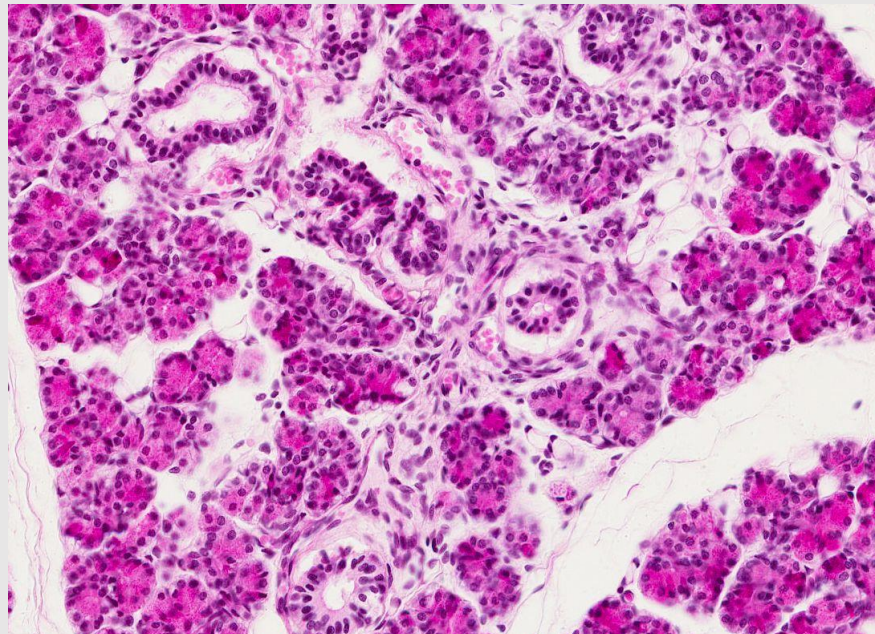
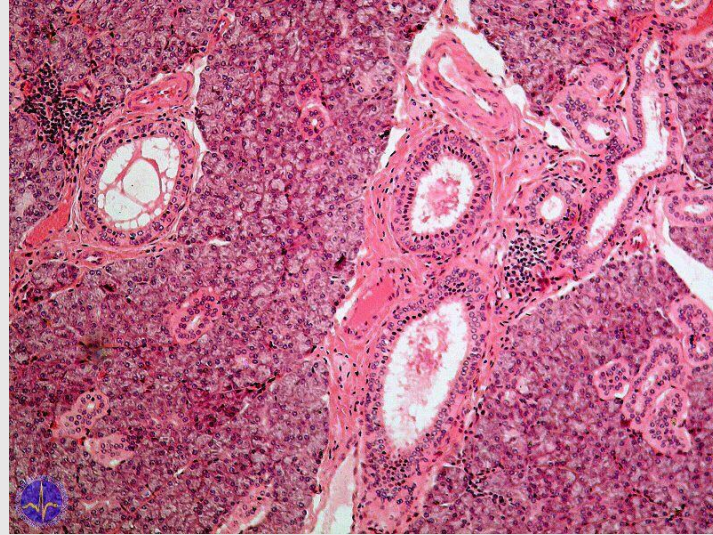
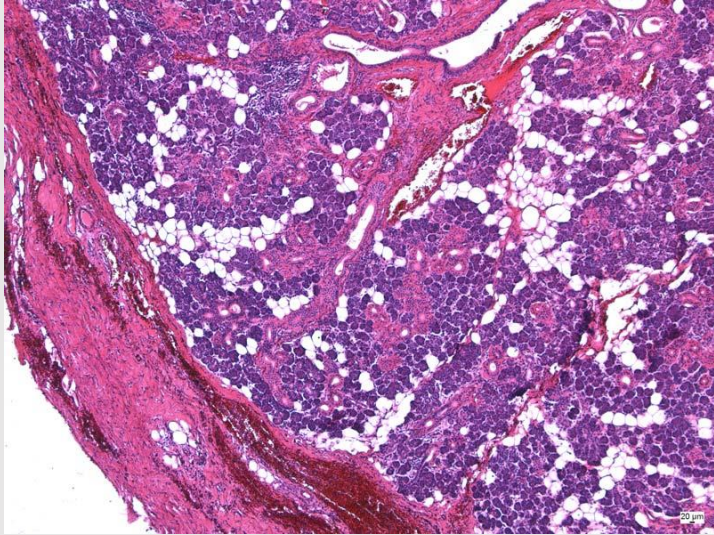
# Slinné žlázy

- vývodní systém
  - vsunutý (spojovací)
  - žíhaný
  - interlobulární
  - hlavní



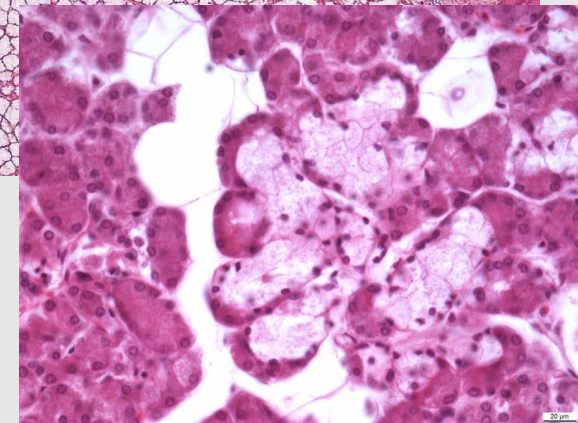
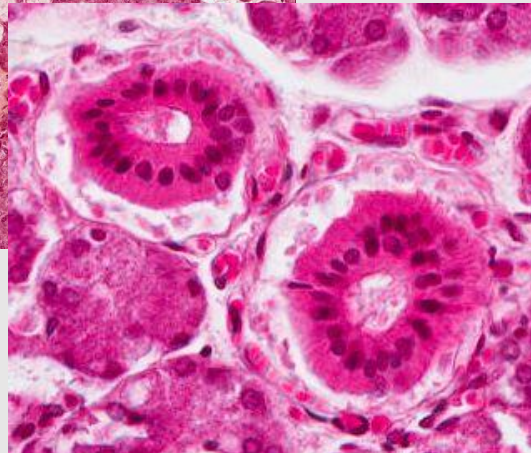
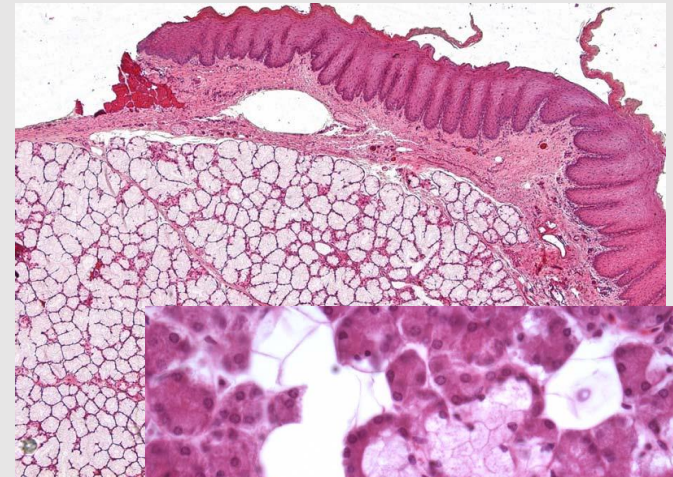
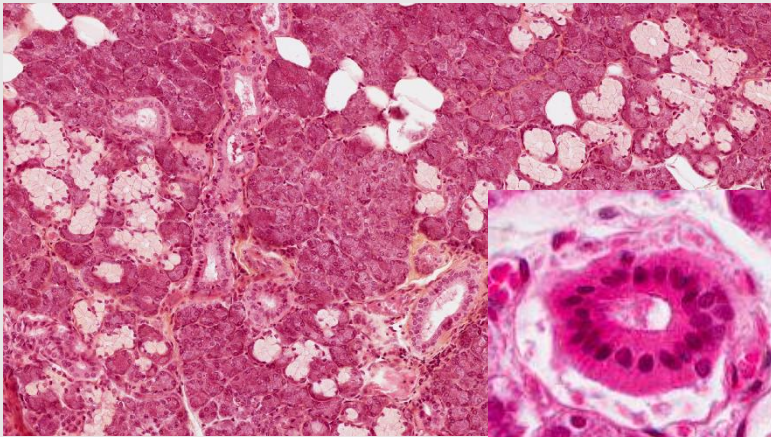
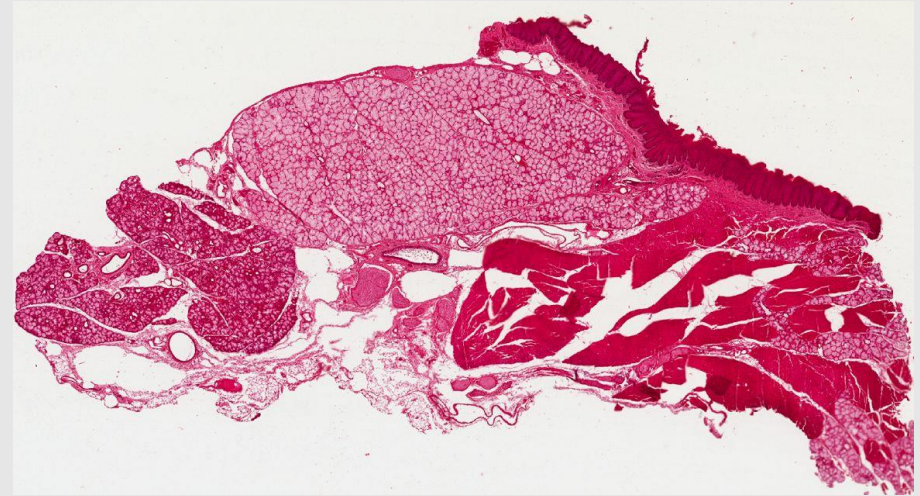
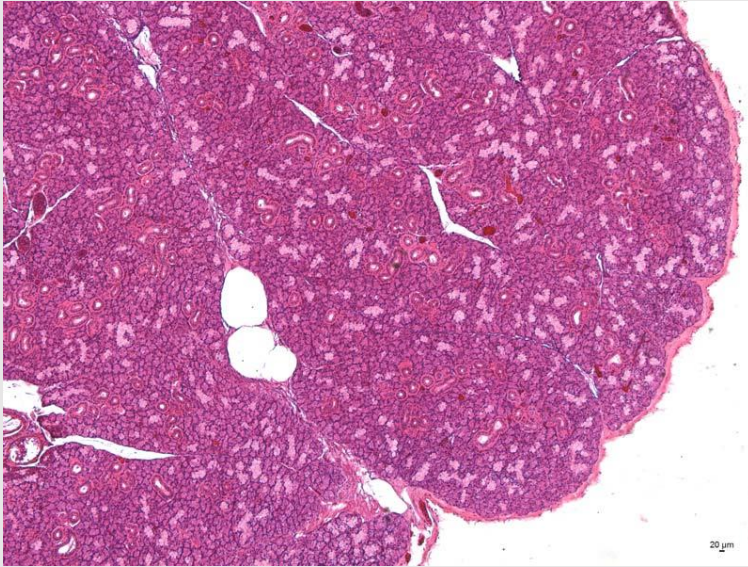


# Glandula parotis





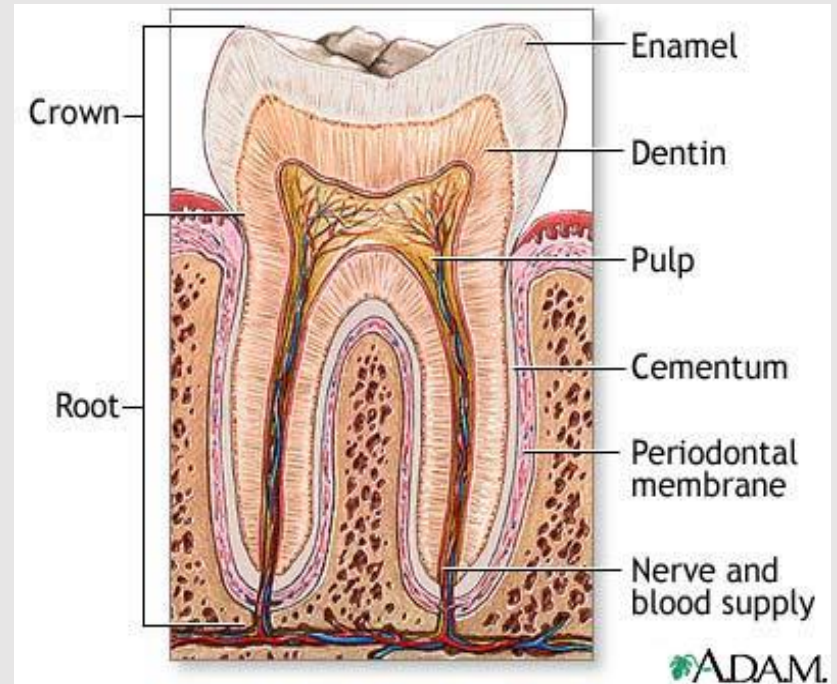
# Glandula submandibularis a sublingualis





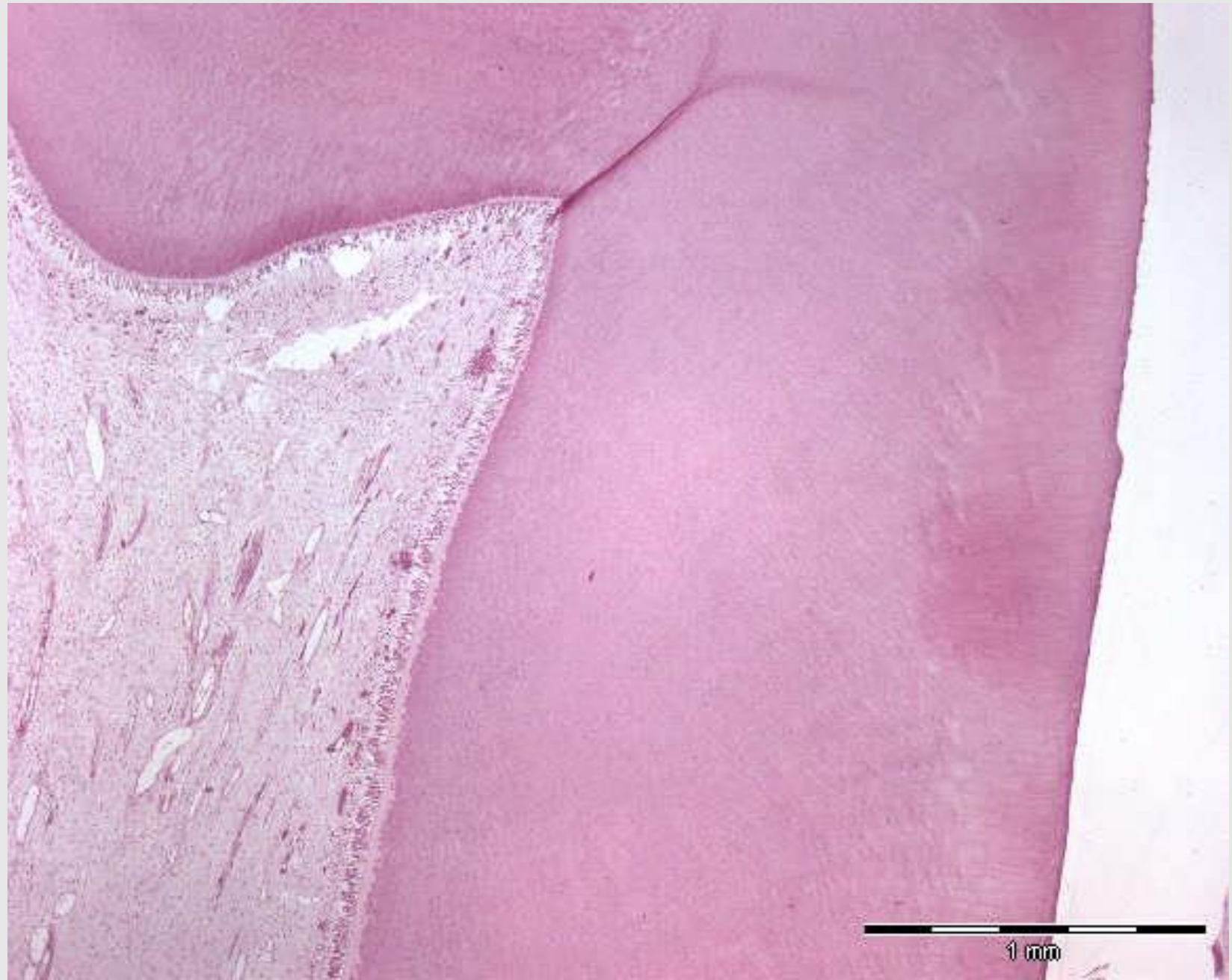
# Zub

- email
  - nejtvrdší **substance** lidského těla, t: → 2.5 mm, 95.5% anorg. solí
- dentin
  - je modifikovaná kostní tkáň, kalcifikovaná – 70% anorg. solí
  - **výběžky odontoblastů** – Tomesova vlákna /lokalizovaná v **dentinových kanálcích**/ a dentinová matrix /kolagenní vlákna + interfibrilární matrix/
- pulpa s **odontoblasty**
  - rosolovité vazivo
  - plexus subodontoblasticus Raschkowi
- cement
  - kostní tkáň vláknitého typu
  - cementocyty /primární a sekundární cement/

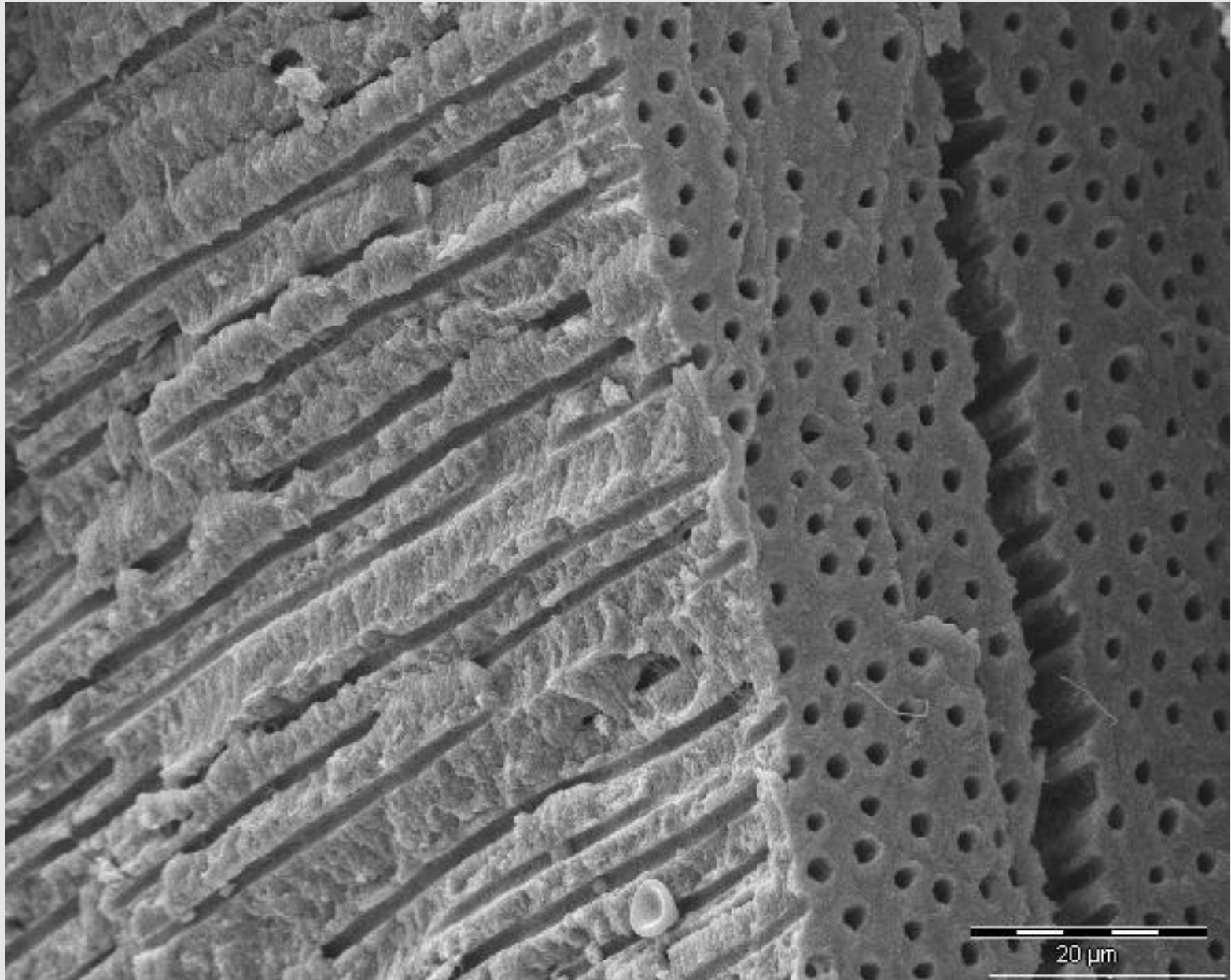




# Zub - korunka



# Dentin – dentinové kanálky





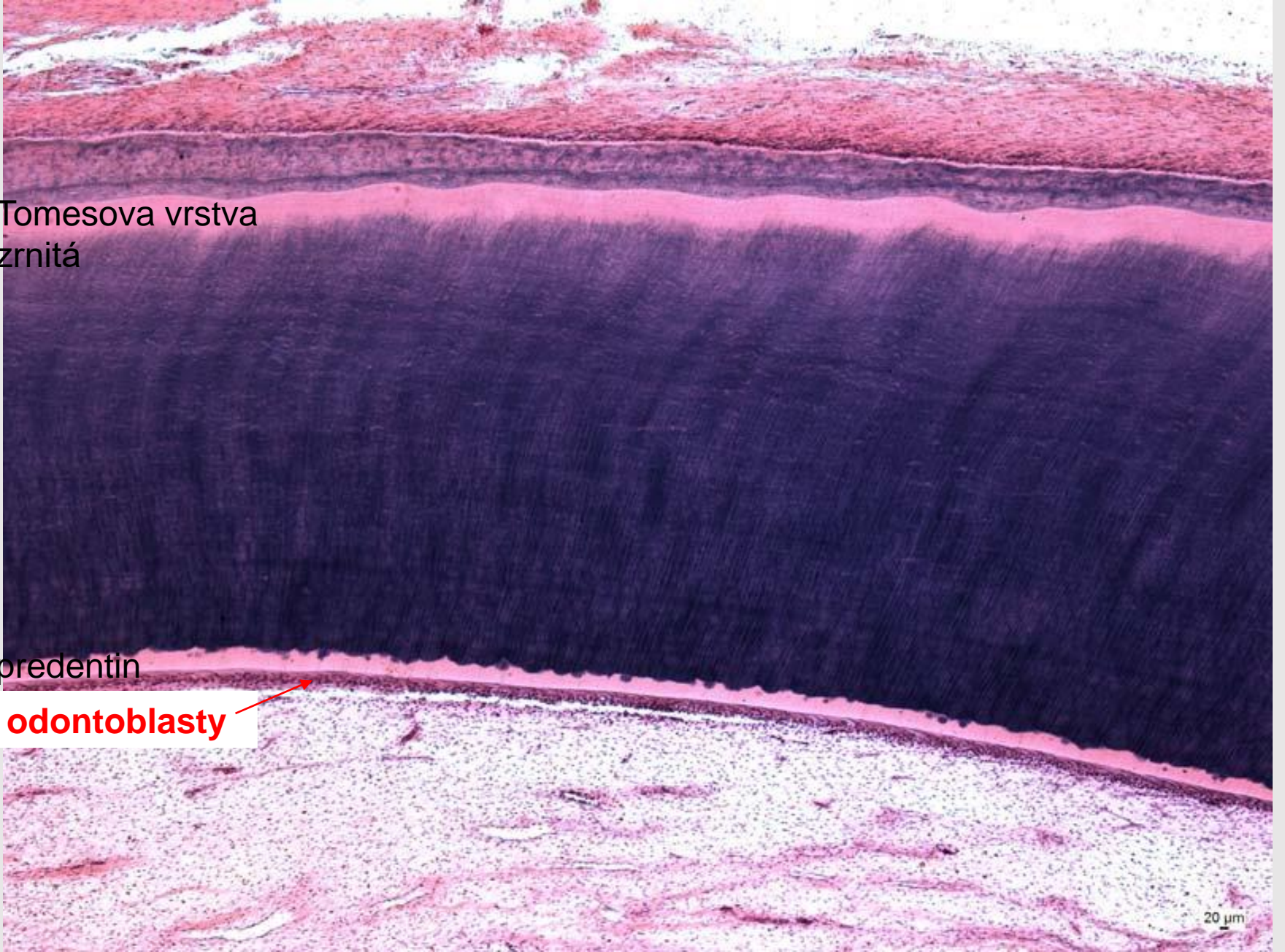
# Zub - kořen

Tomesova vrstva  
zrnitá

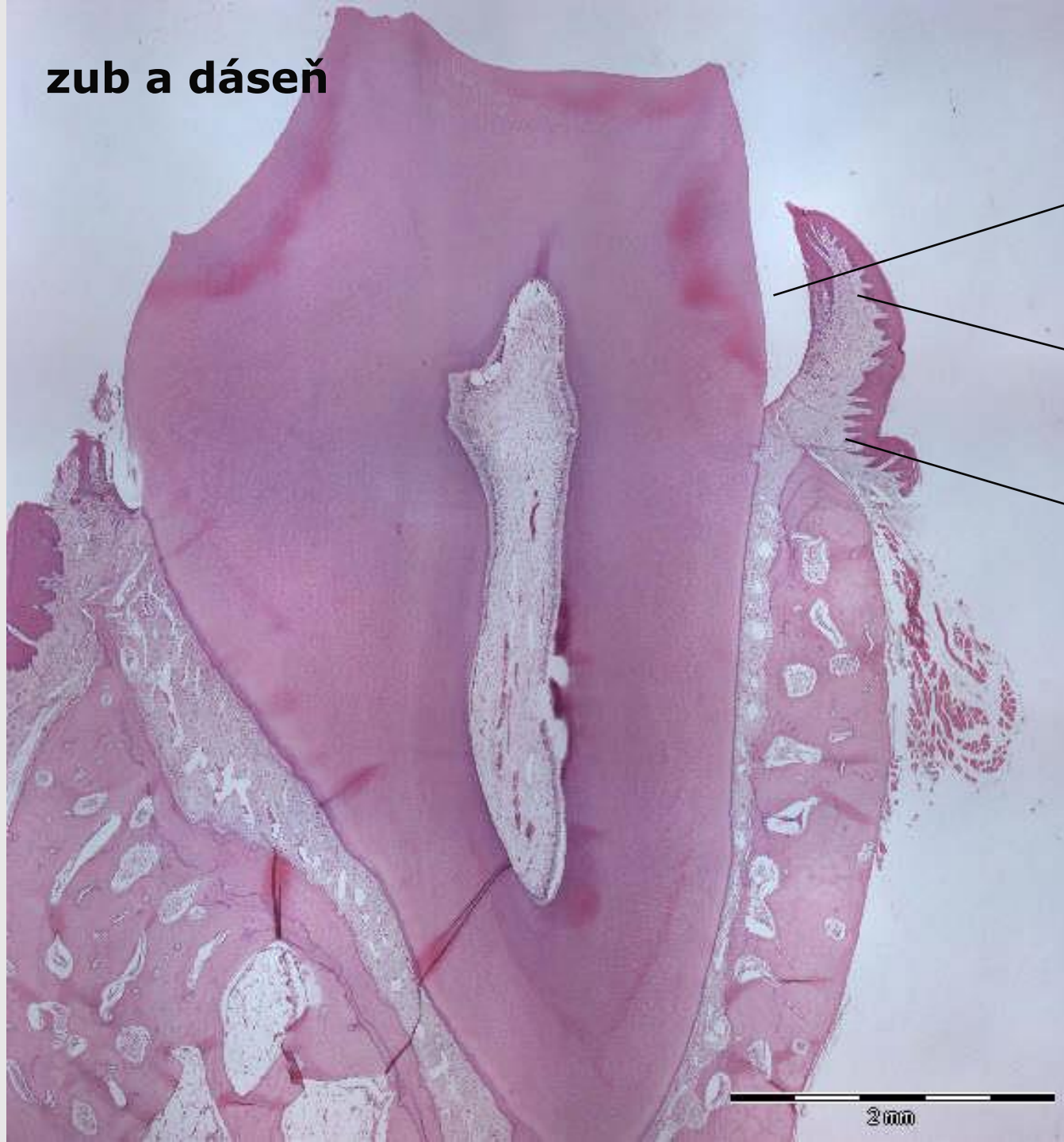
pre dentin

**odontoblasty**

20  $\mu$ m



# zub a dásen

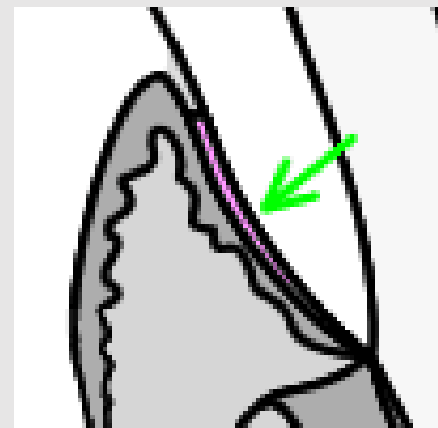


sulcus gingivalis

gingiva libera

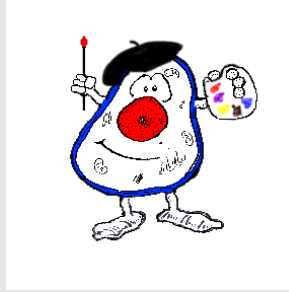
gingiva affixa

Gottliebova těsnící  
epitelová manžeta





# Trávicí systém I



- 1. Labium oris
- 2. Apex linguae
- 3. Papilla circumvallata
- 5. Palatum molle
- 7. Zub
- 8. Glandula parotis
- 9. Glandula submandibularis
- 10. Glandula sublingualis