

Glandular epithelium

Glandular epithelium

- Single cell glands
- Multicellular glands

Glandular epithelium

Single cell glands



- endoepithelial

- endocrine
- exocrine

- apocrine
- merocrine
- holocrine

Multicellular glands



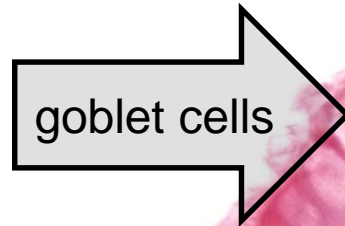
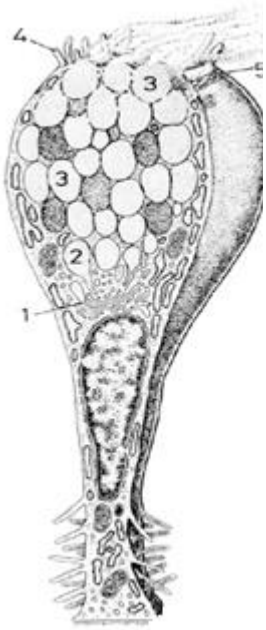
- endoepithelial
- exoepithelial

- alveolar (acinar)
- tubular
- tubuloalveolar

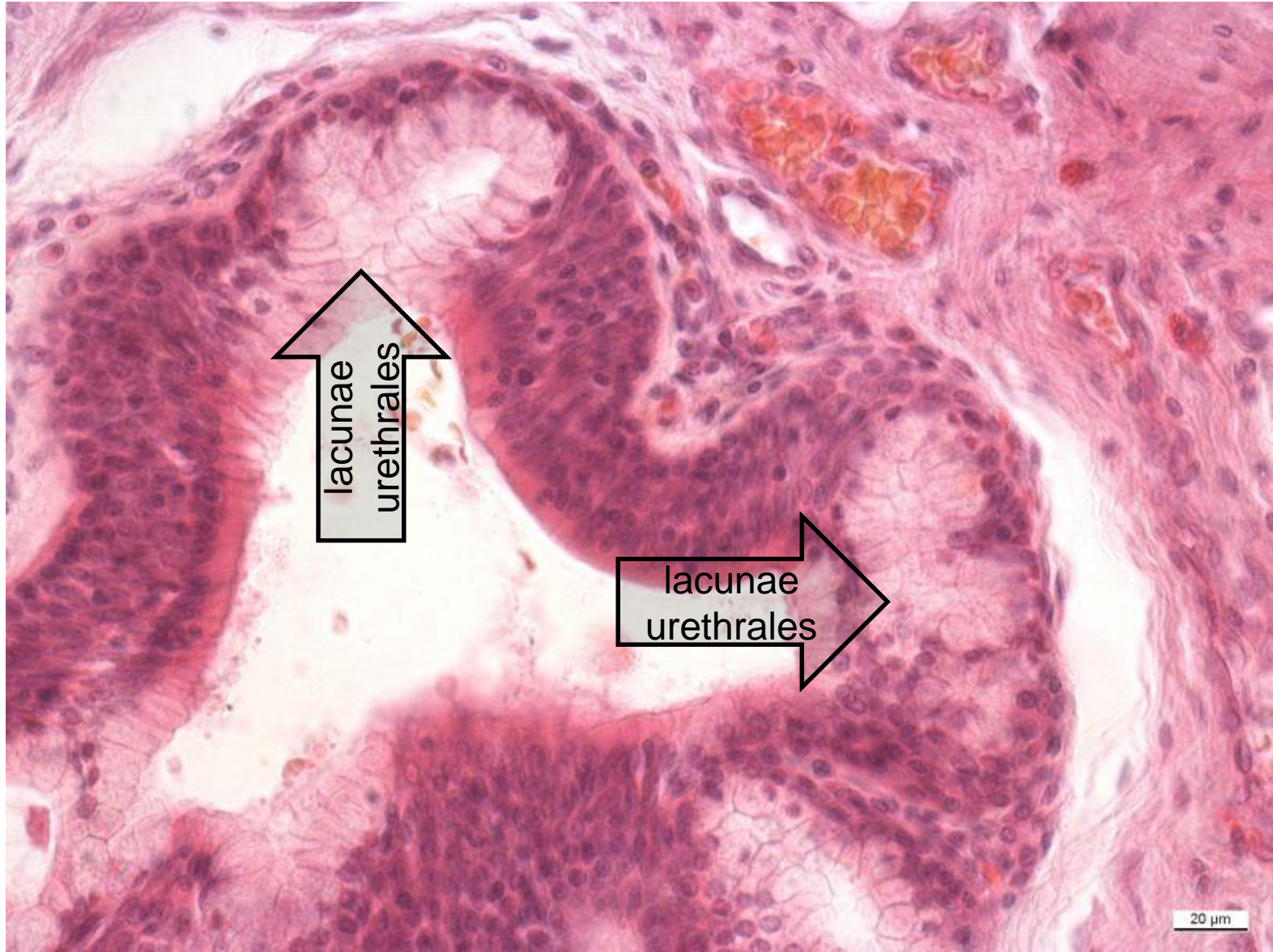
- simple
- branched
- compound

- serous
- mucinous
- mixed

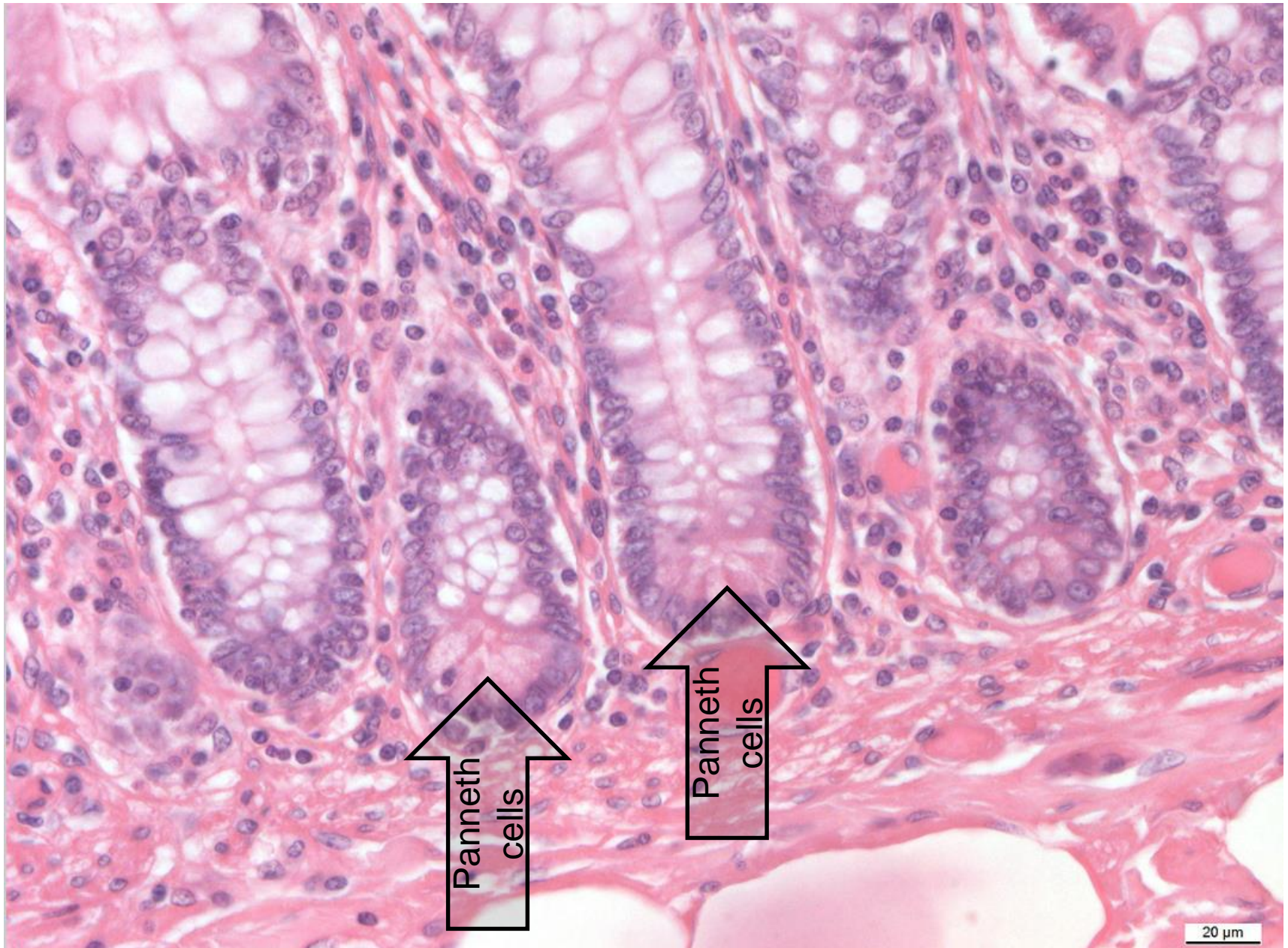
Single cell glands - endoepithelial Goblet cells in respiratory passages



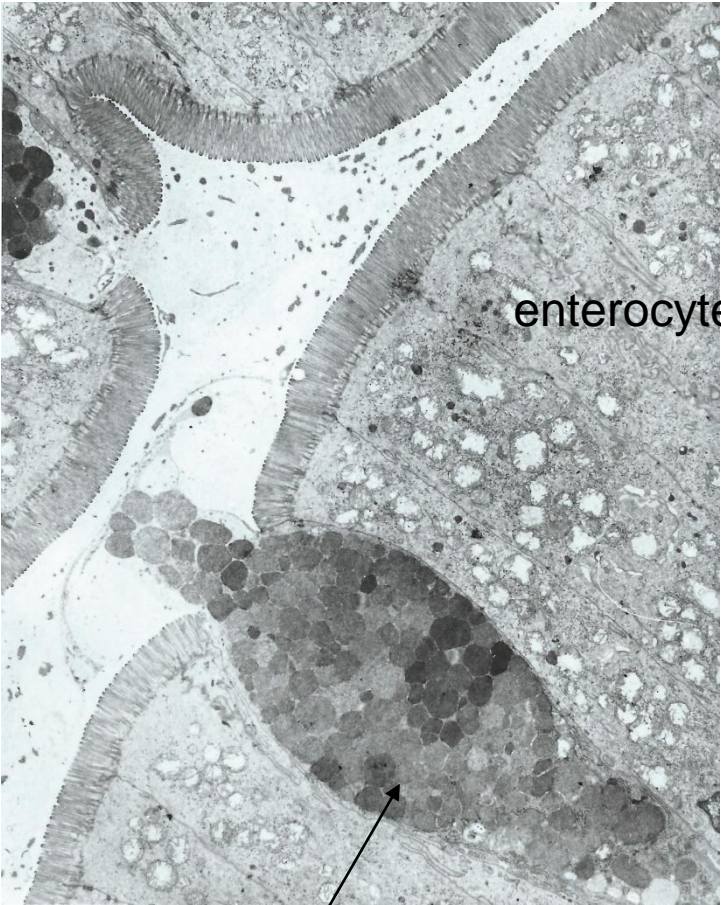
Multicellular endoepithelial glands – *lacunae urethrales* (Morgagni) in male urethra



Paneth cells and goblet cells - *Intestinum tenue*

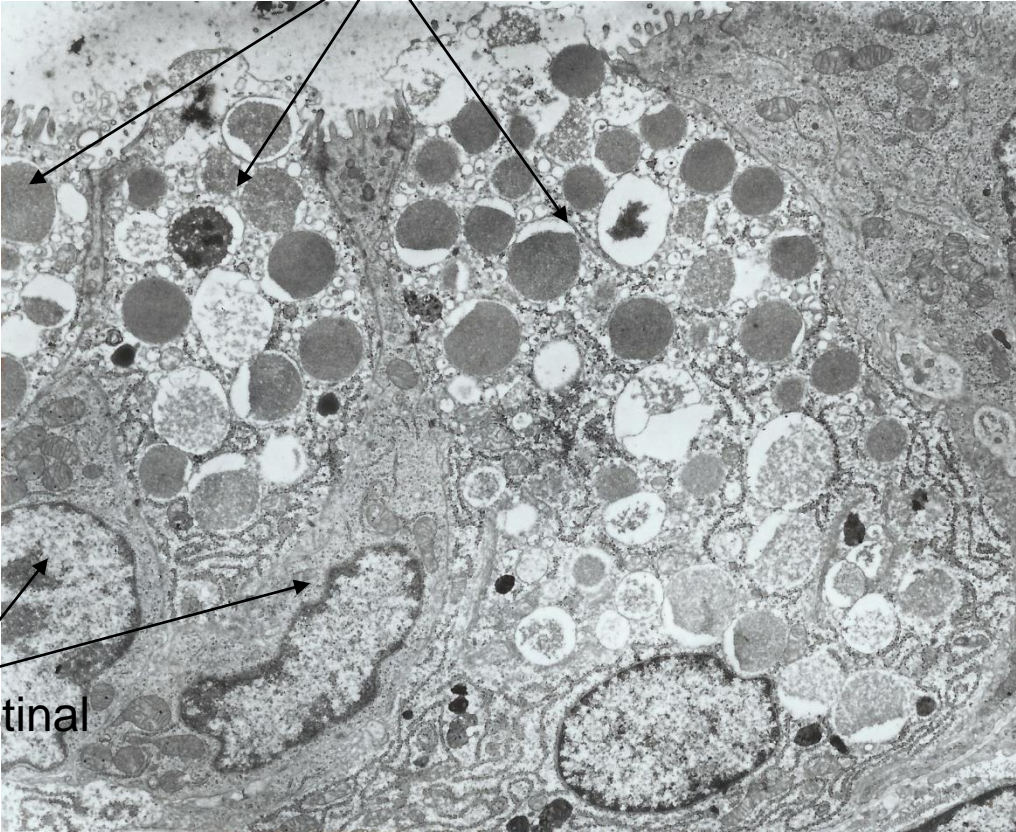


Goblet cells and Paneth cells - Intestinum tenue (TEM)



enterocytes

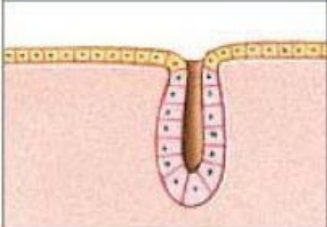
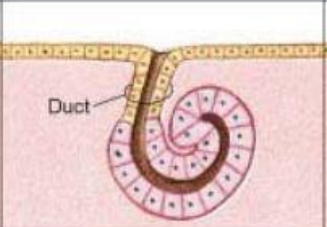
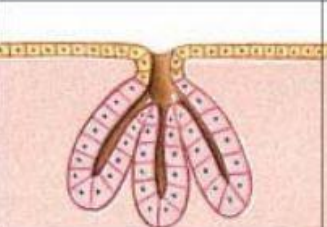
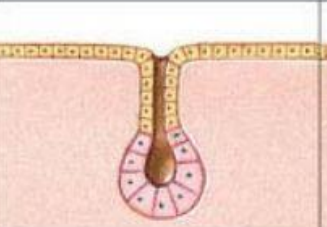

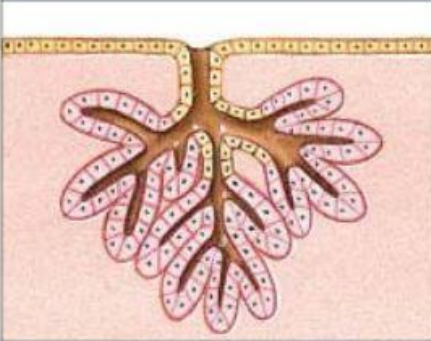
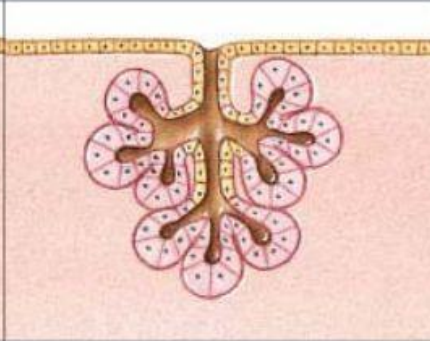
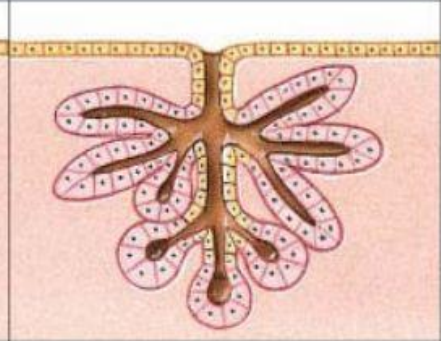
goblet cell



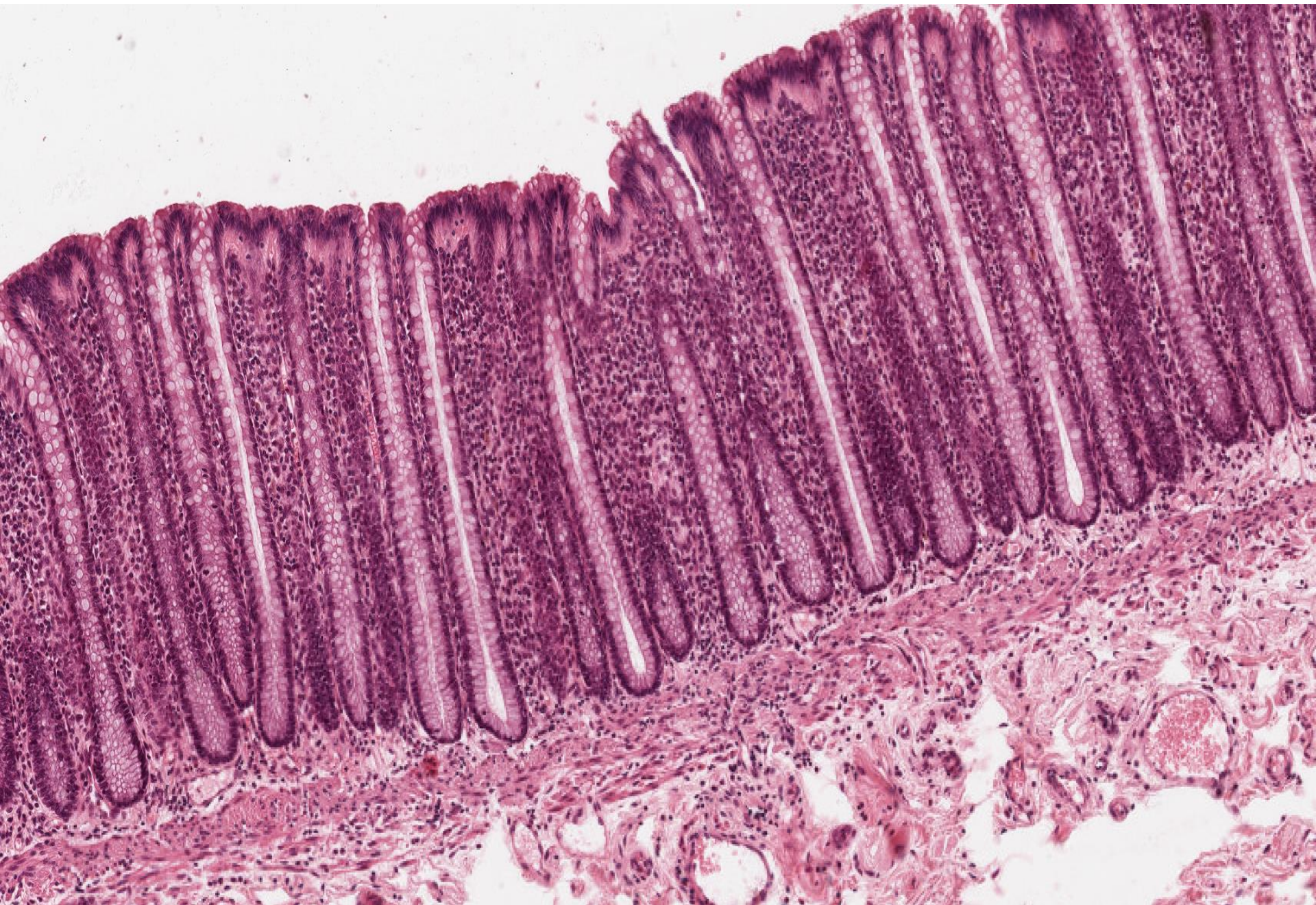
Paneth cells

stem cells of intestinal epithelium

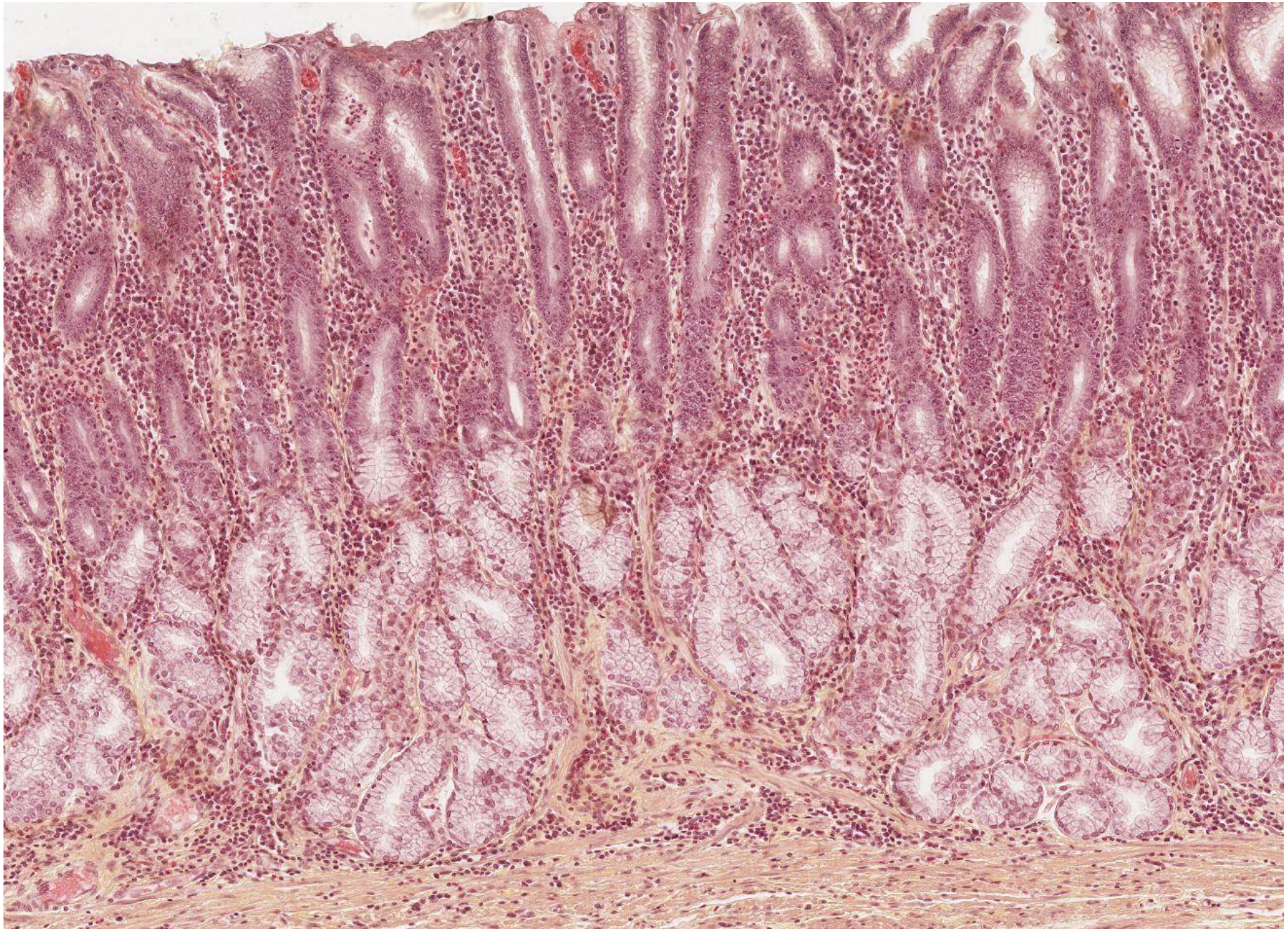
Multicellular exoepithelial glands

MULTICELLULAR SIMPLE GLANDS				
				
<p>Simple tubular</p> <p><i>Examples:</i> Intestinal glands (crypts of Lieberkühn)</p>	<p>Simple coiled tubular</p> <p><i>Examples:</i> Merocrine sweat glands</p>	<p>Simple branched tubular</p> <p><i>Examples:</i> Mucous glands of esophagus, tongue, duodenum</p>	<p>Simple alveolar (acinar)</p> <p><i>Examples:</i> Not found in adult; a stage in development of simple branched glands</p>	<p>Simple branched alveolar</p> <p><i>Examples:</i> Sebaceous (oil) glands</p>
MULTICELLULAR COMPOUND GLANDS				
				
<p>Compound tubular</p> <p><i>Examples:</i> Mucous glands (in mouth) Gastric glands Bulbourethral glands (in male reproductive system) Testes (seminiferous tubules)</p>	<p>Compound alveolar (acinar)</p> <p><i>Examples:</i> Mammary glands</p>	<p>Compound tubuloalveolar (tubuloacinar)</p> <p><i>Examples:</i> Salivary glands Glands of respiratory passages Pancreas (excretory portion)</p>		

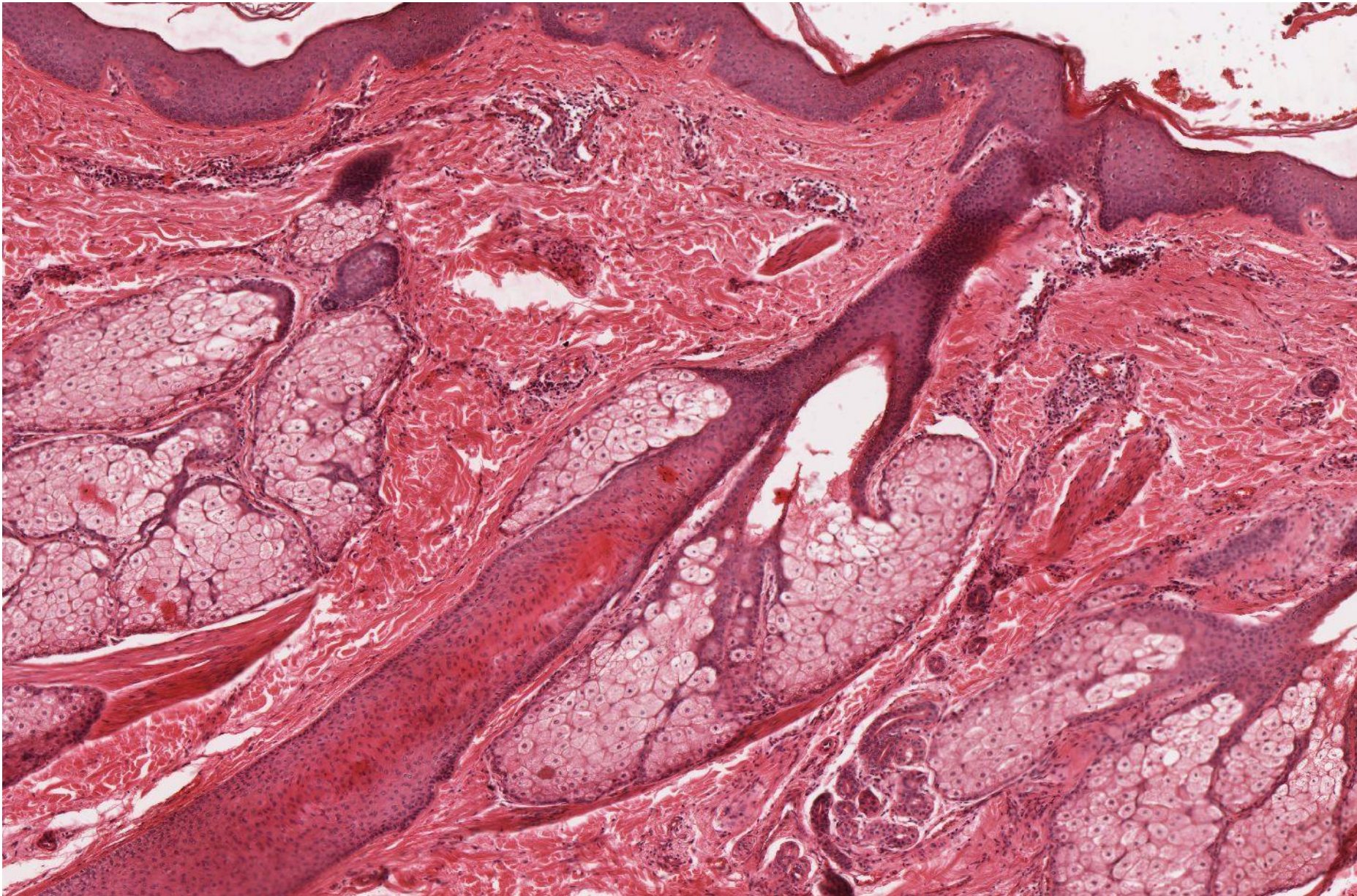
Crypts of Lieberkühn - Intestinum crassum (HE)



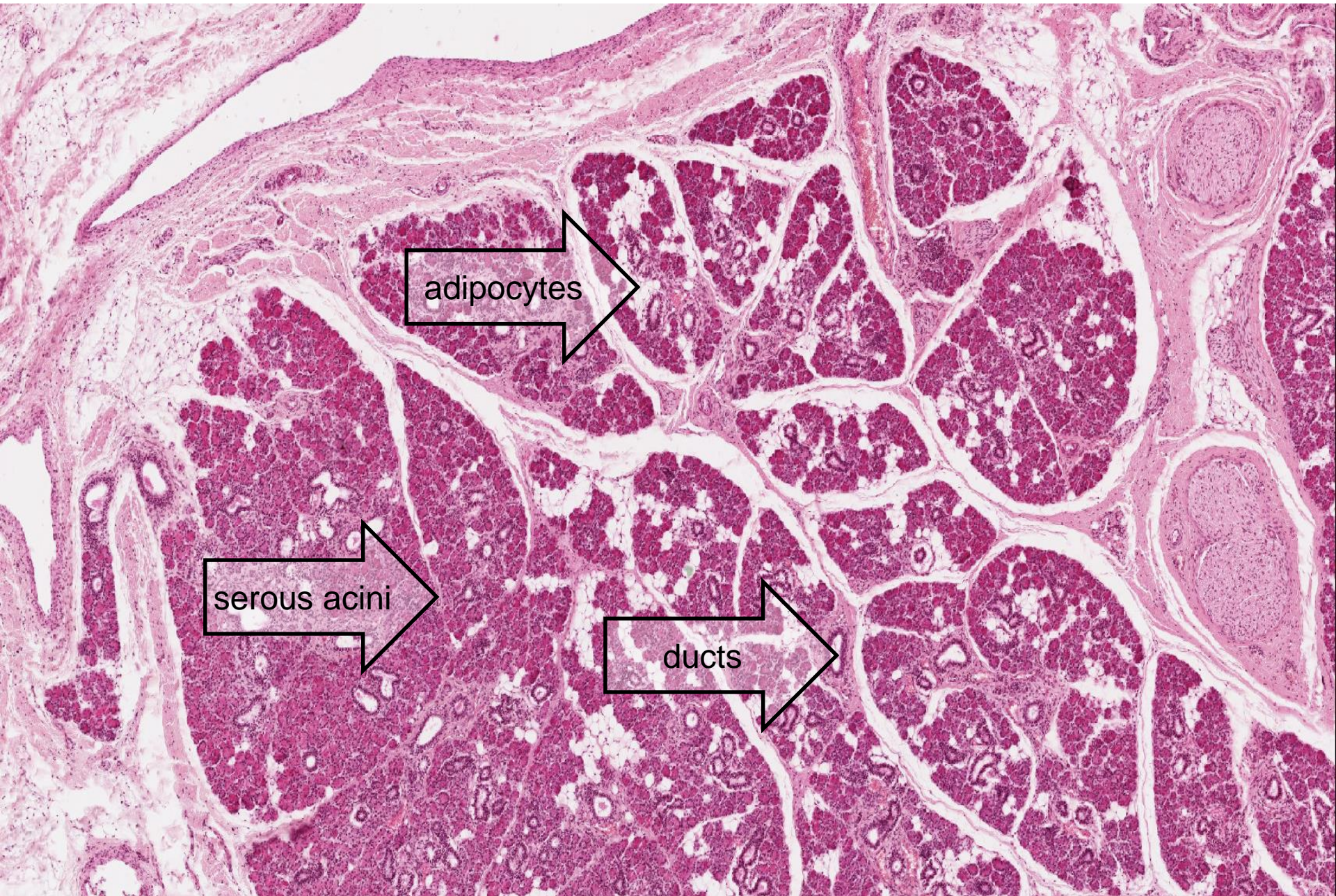
Branched tubular glands – Pylorus (HES)



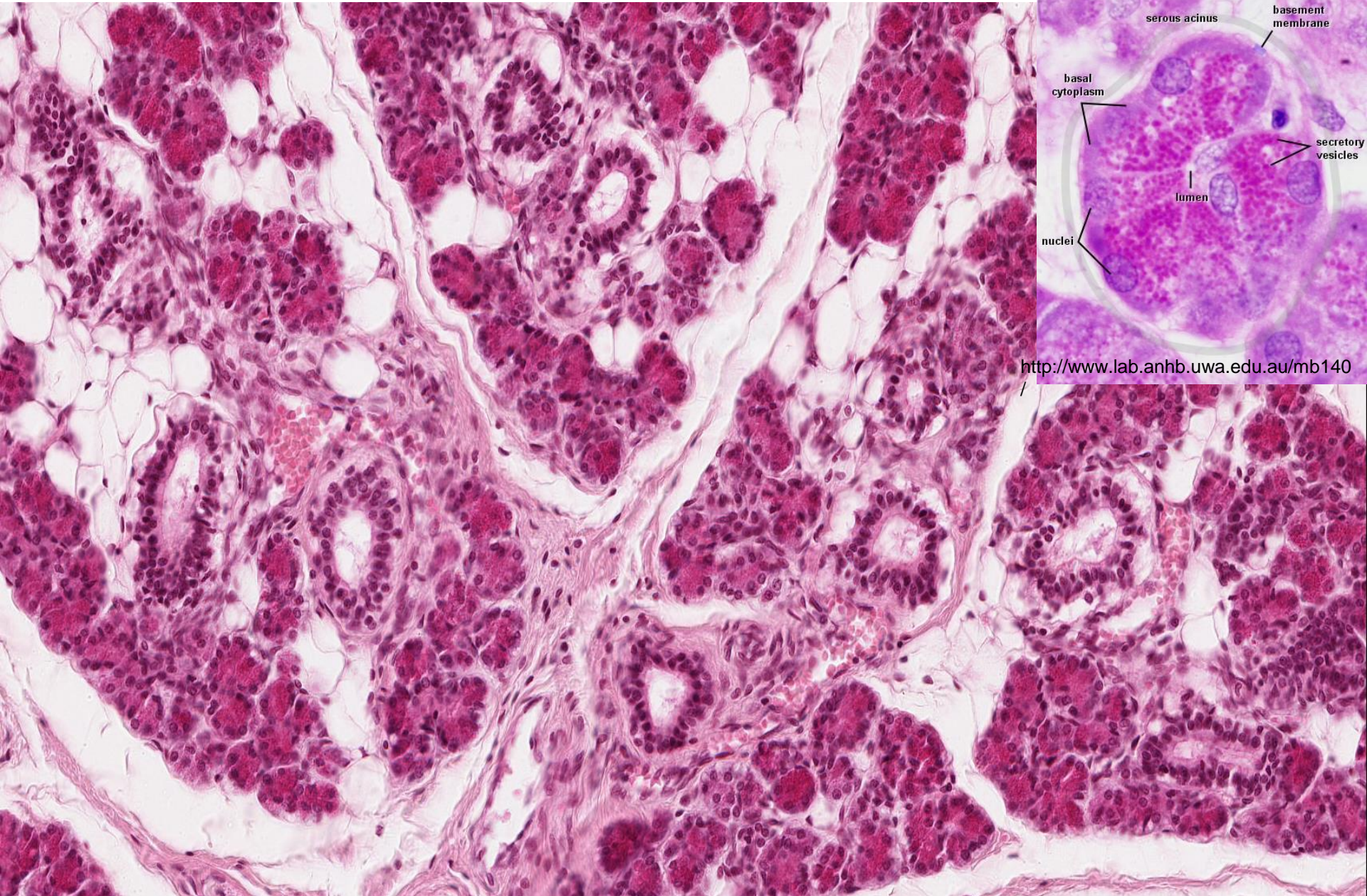
Branched alveolar (acinar) glands – sebaceous glands - Skin



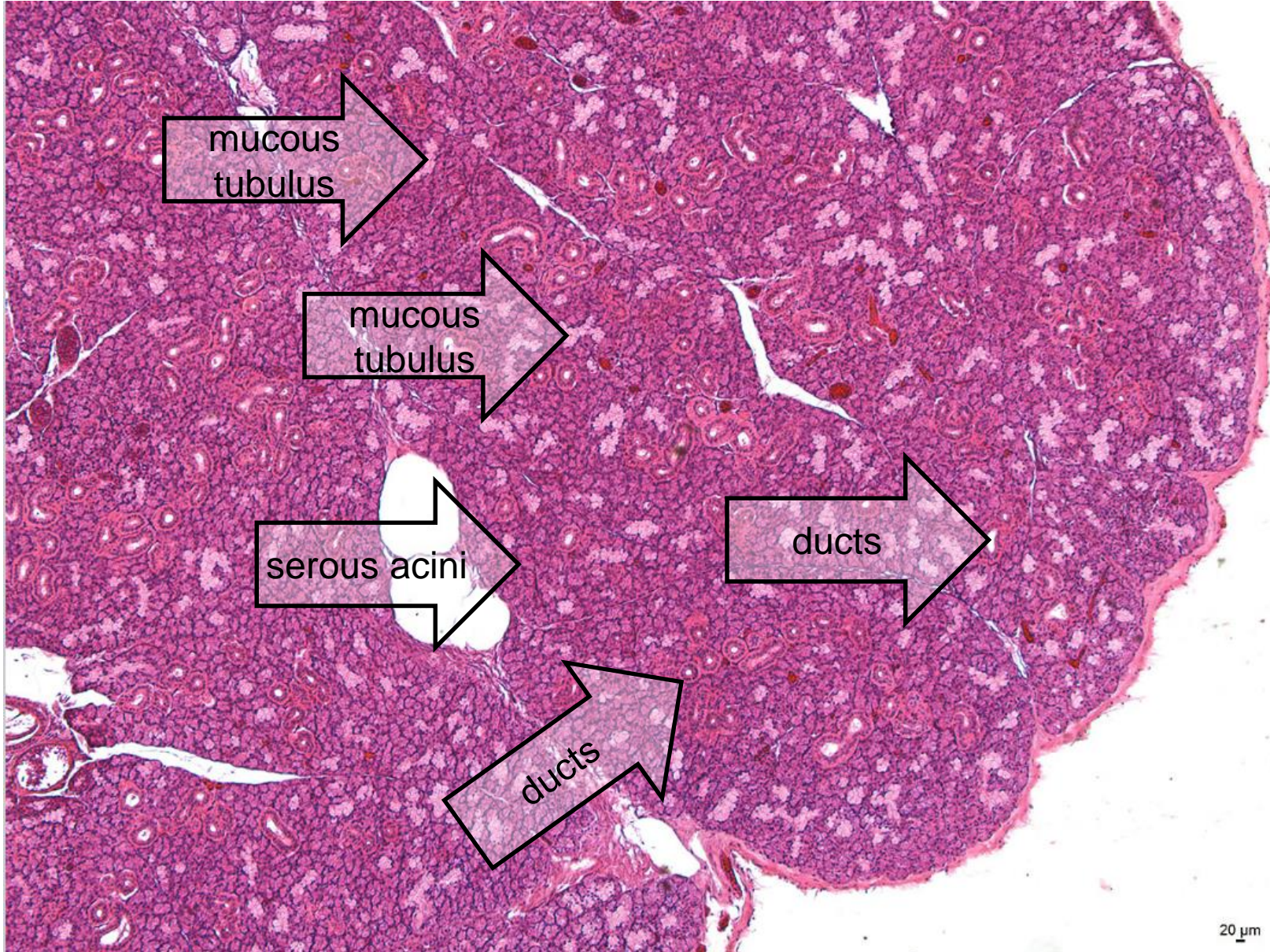
Compound alveolar serous gland - *Glandula parotis*



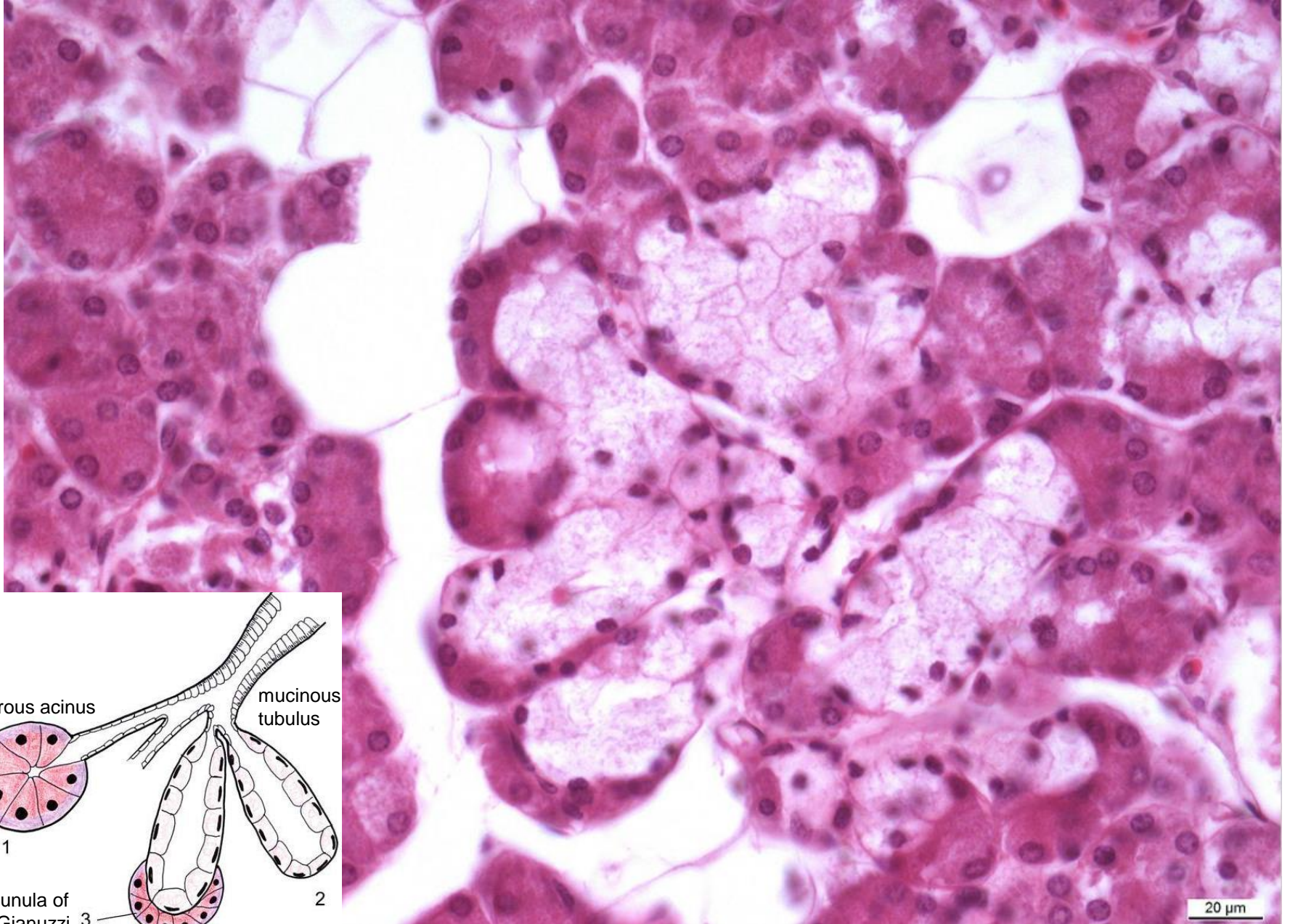
Compound alveolar serous gland - *Glandula parotis*



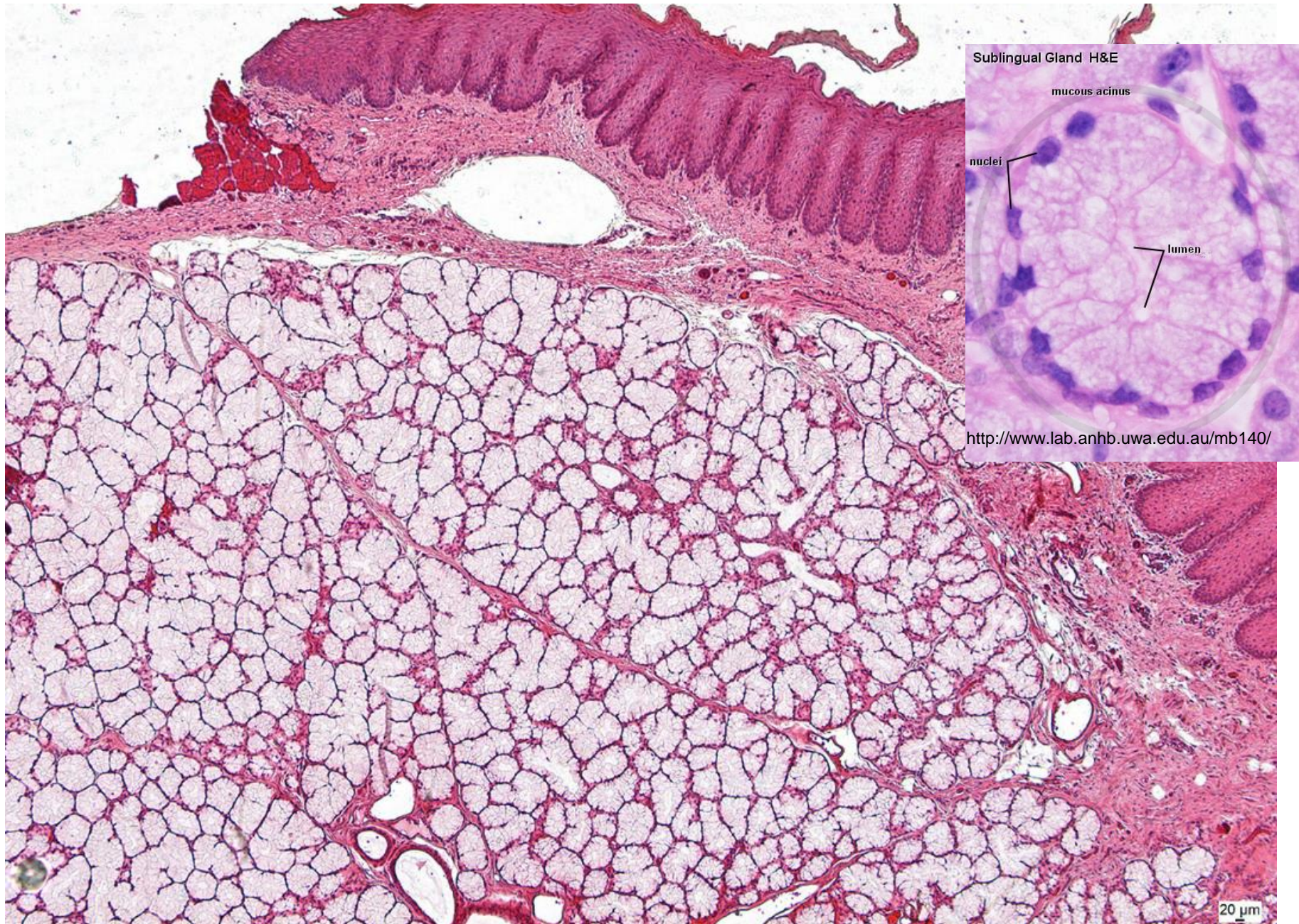
Compound tuboalveolar mixed gland - *Glandula submandibularis*



Compound tuboalveolar mixed gland - *Glandula submandibularis*



Compound tubuloalveolar mixed gland - *Glandula sublingualis*



Glandular epithelium

Slides:

Paneth cells and goblet cells (16. *Intestinum tenue*)

Lacunae urethrales (male urethra)

Simple tubular glands with goblet cells (17. *Intestinum crassum*)

Branched tubular glands (14. Pylorus)

Branched alveolar (acinar) glands – sebaceous glands (71. Skin with hair)

Compound serous gland (8. *Glandula parotis*)

Compound mixed gland (9. *Glandula submandibularis*)

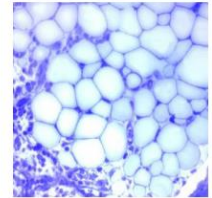
Electronograms:

Atlas of Cytology and Embryology

Numbers by the slides indicate their positions in sets in Microscopic Hall, not in online atlases. These numbers allow you to find the slides easily and study them using a microscope when the normal classes are opened.

Histologický atlas

Doporučený studijní materiál



Cytologický a embryologický atlas

Doporučený studijní materiál

