

Covering (sheet) epithelia

Epithelia

according to
morphology

according to
function

- covering
- trabecular
- reticular

- glandular
- resorption
- sensory
- alveolar

- ...

Classification of covering epithelia

- according to number of cell layers
- according to morphology of superficial layer

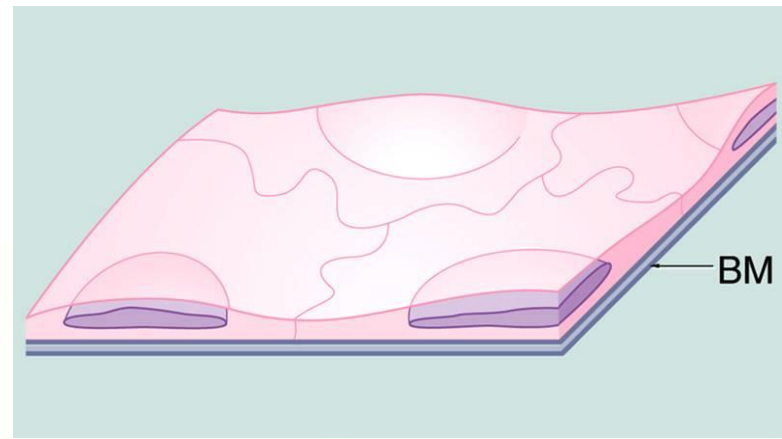
Simple

- Simple squamous
- Simple cuboidal
- Simple columnar
- Pseudostratified columnar

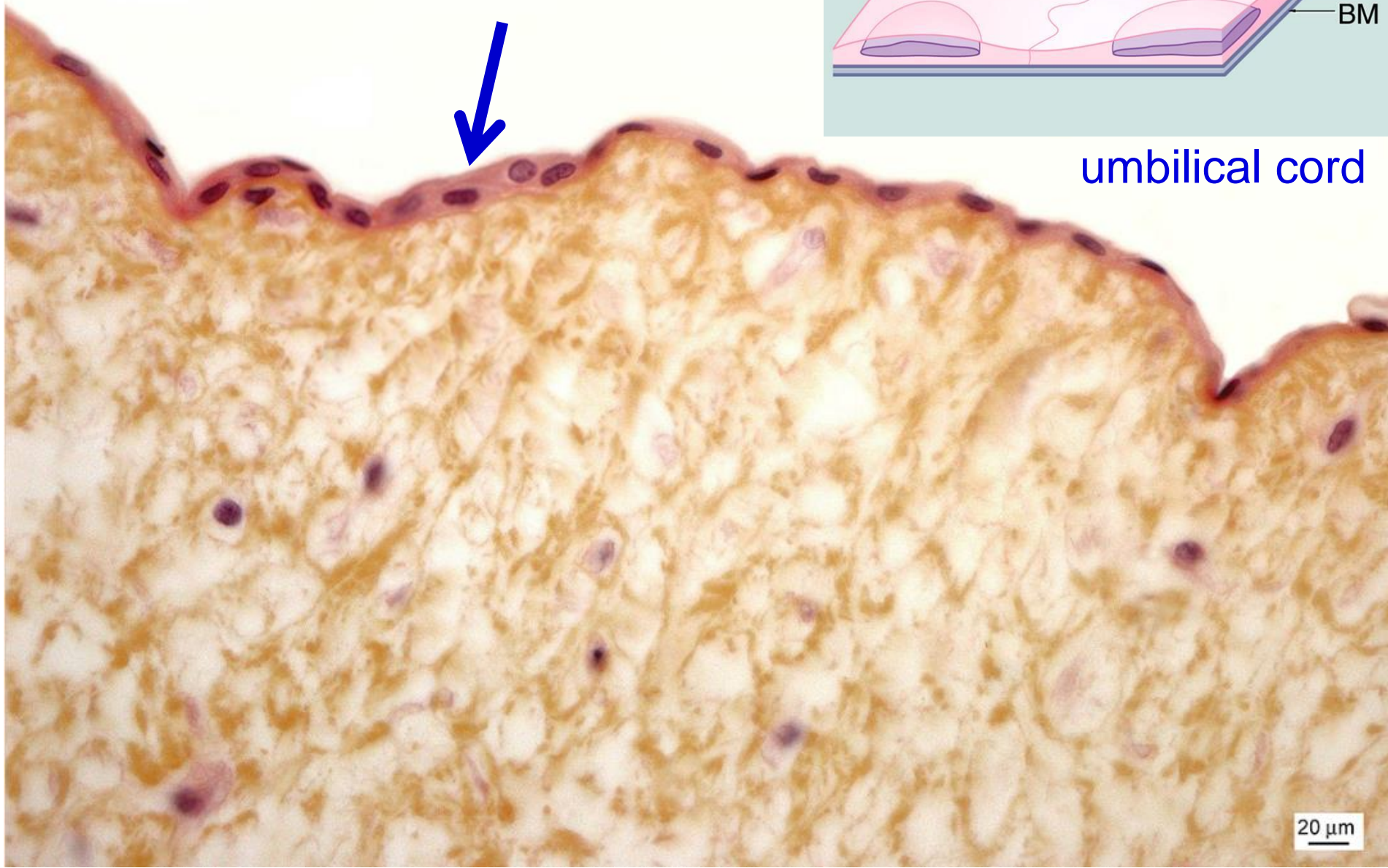
Stratified

- Stratified squamous non-keratinized
- Stratified squamous keratinized
- Stratified columnar
- Transitional

Simple squamous epithelium



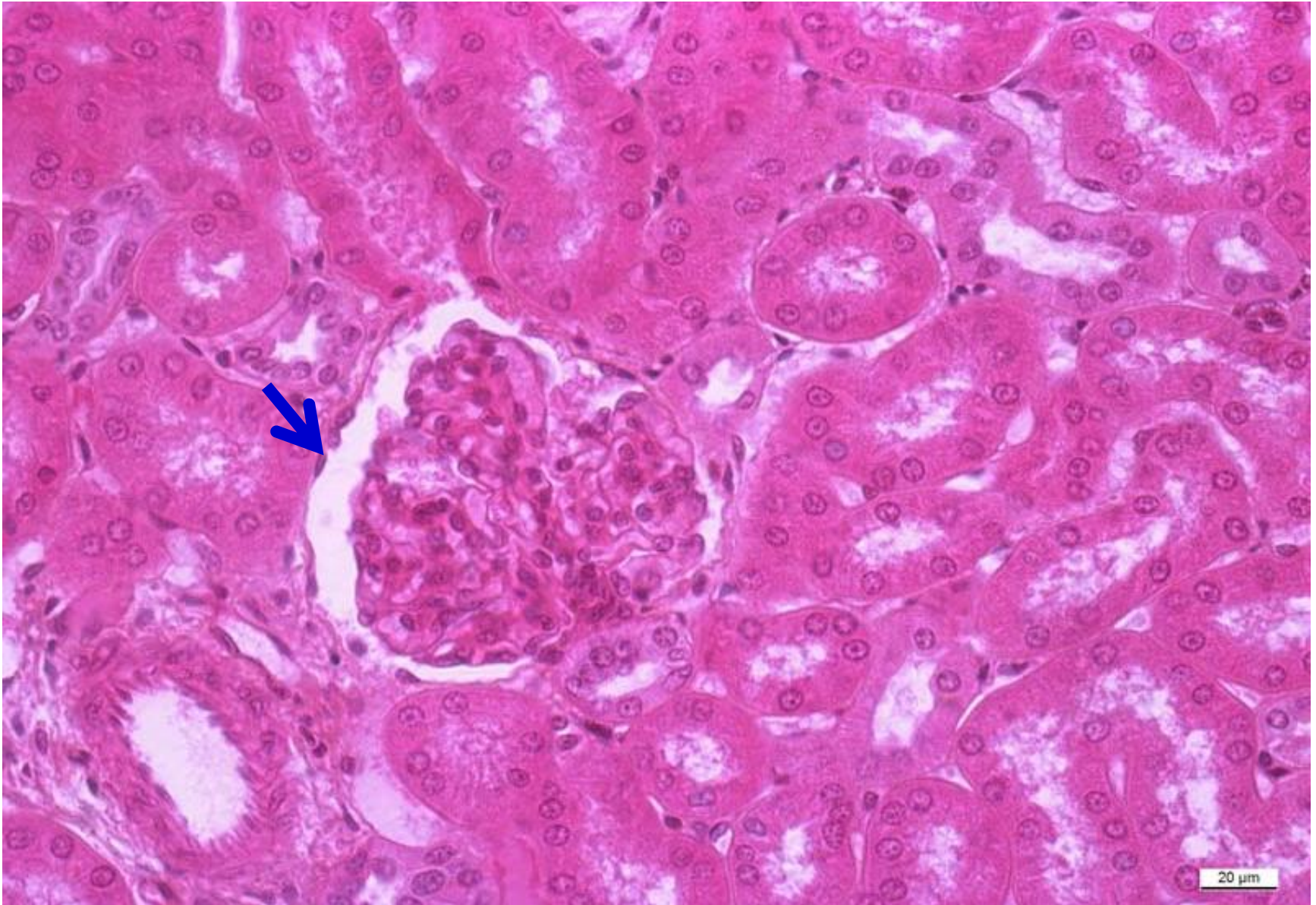
umbilical cord



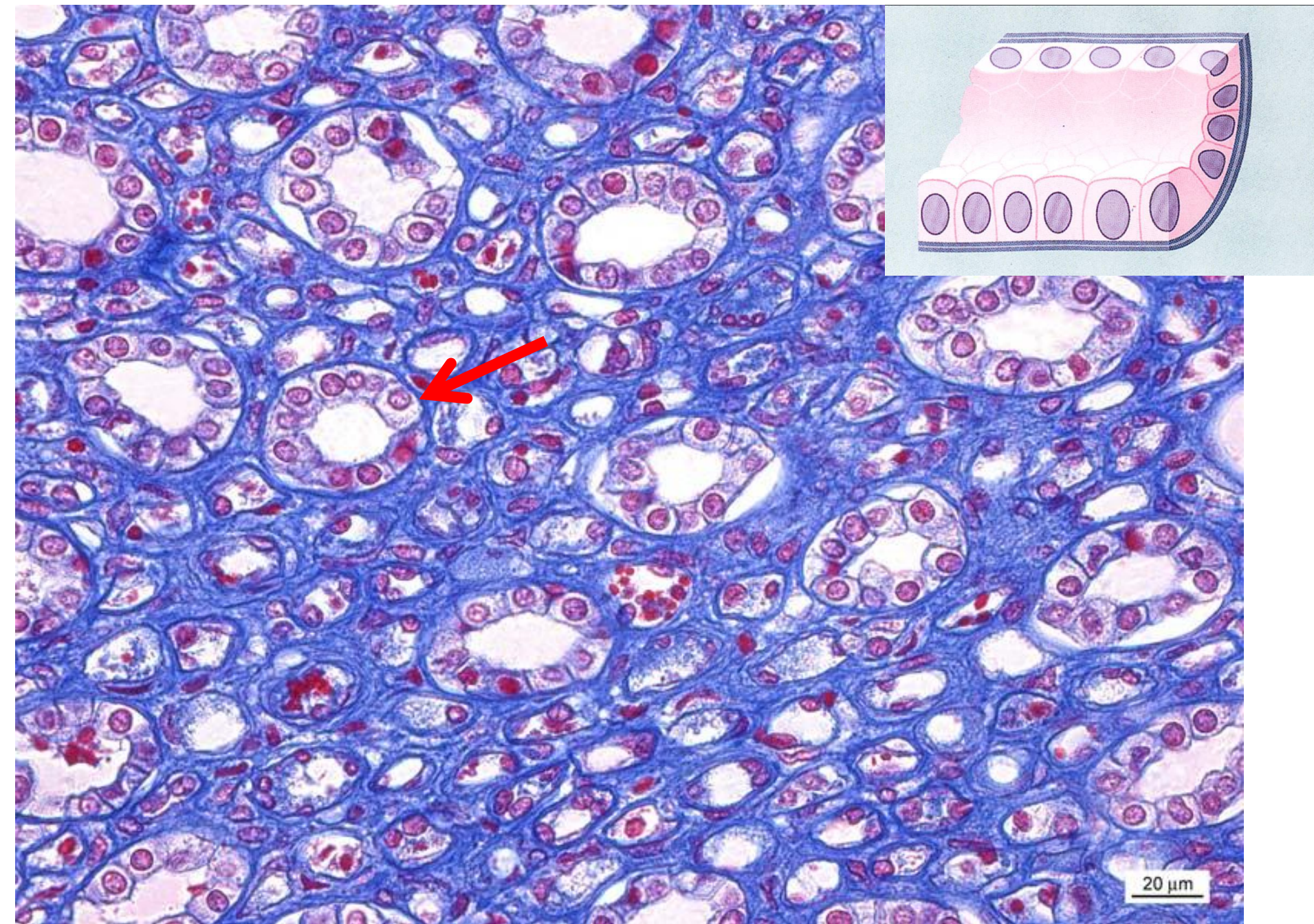
20 μ m

Simple squamous epithelium

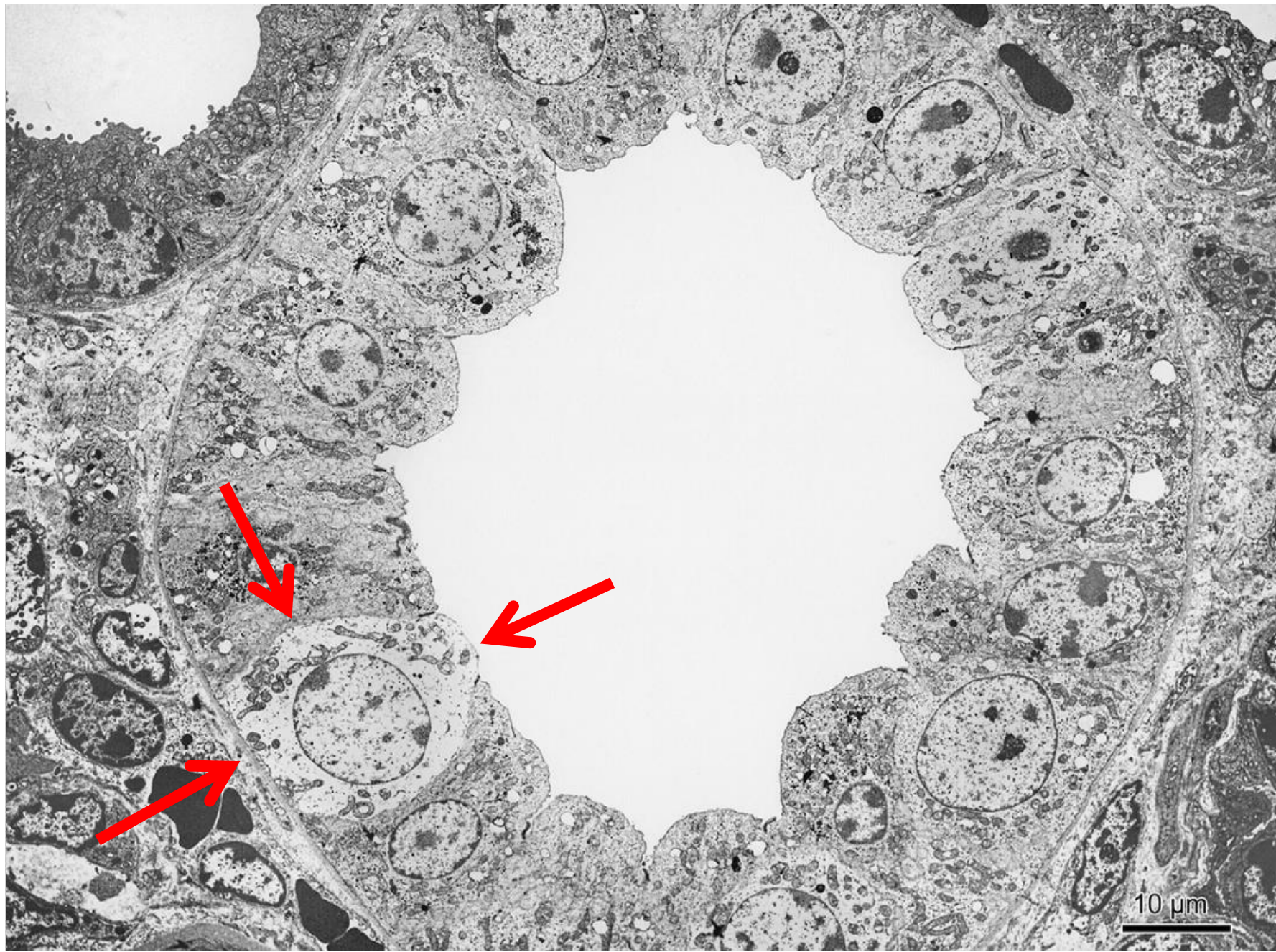
– parietal sheet of Bowman's capsule, corpusculum renis



Simple cuboidal epithelium – loop of Henle (asc.)



Simple cuboidal epithelium – t. renalis colligens

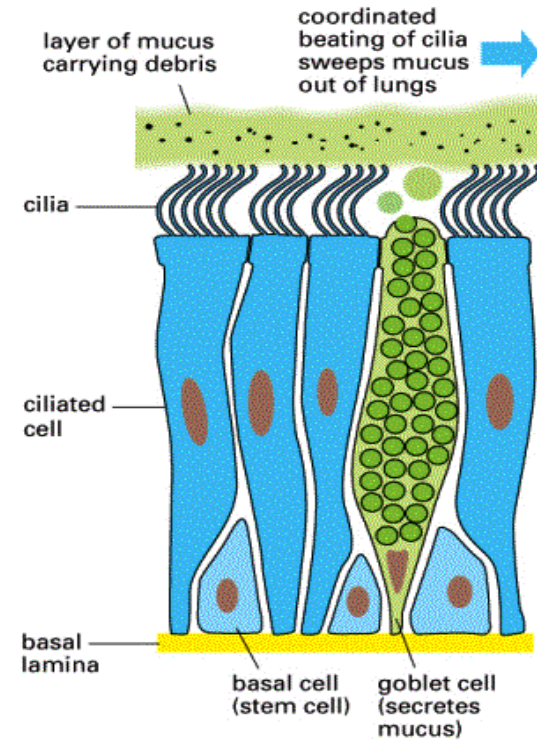
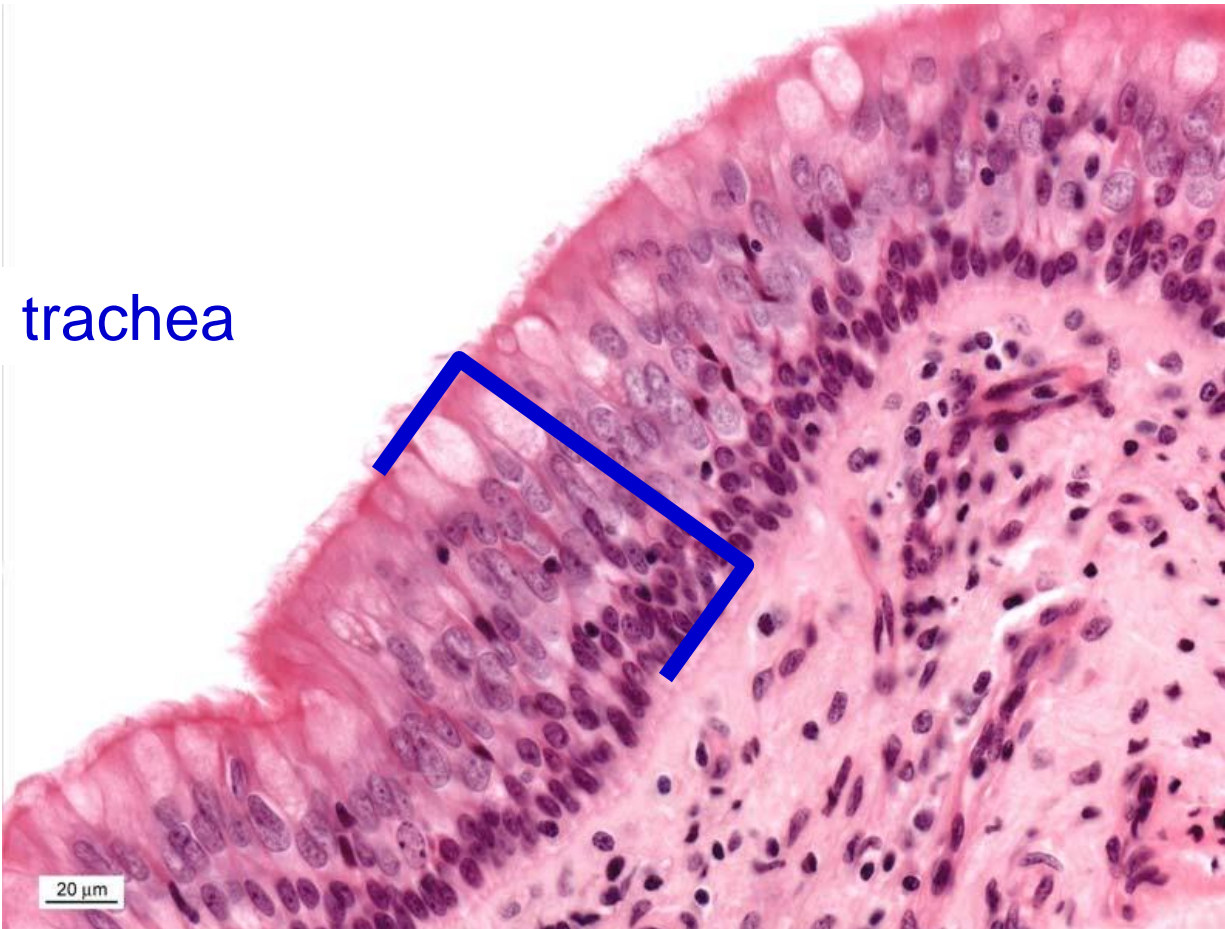


Simple columnar epithelium – vesica fellea



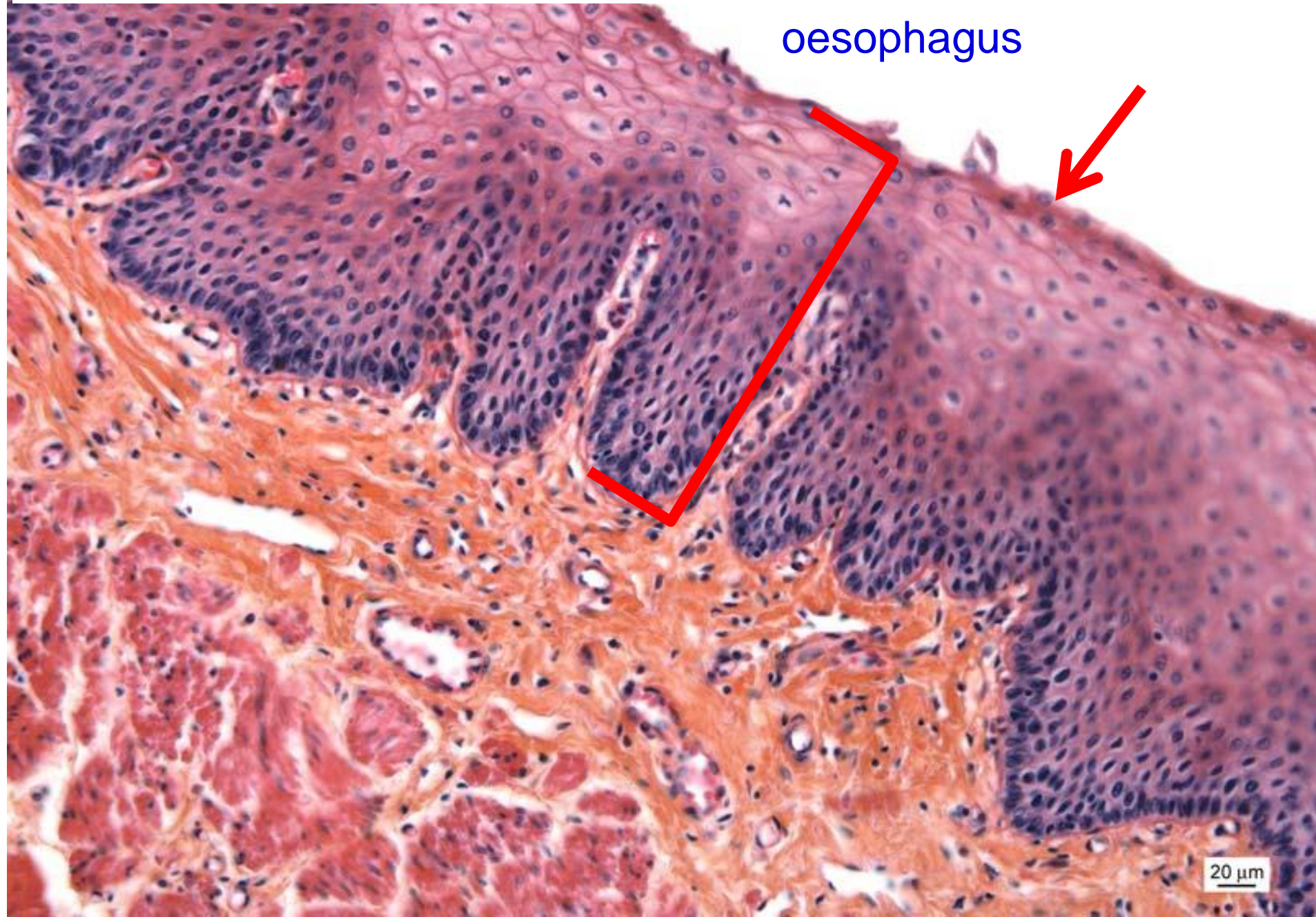
Pseudostratified columnar epithelium (ciliated) – respiratory passages

trachea



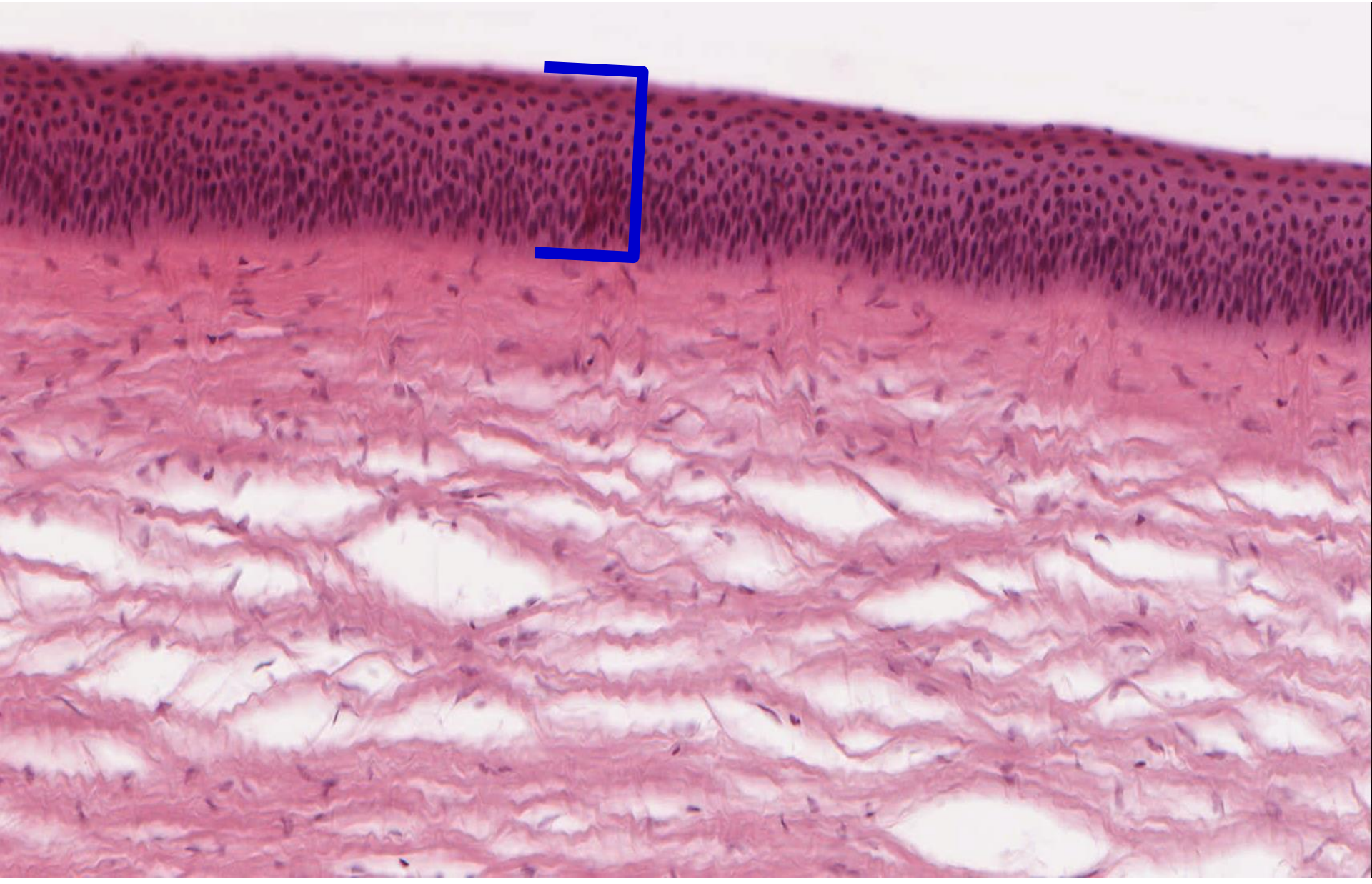
Stratified squamous epithelium – non-keratinized

oesophagus



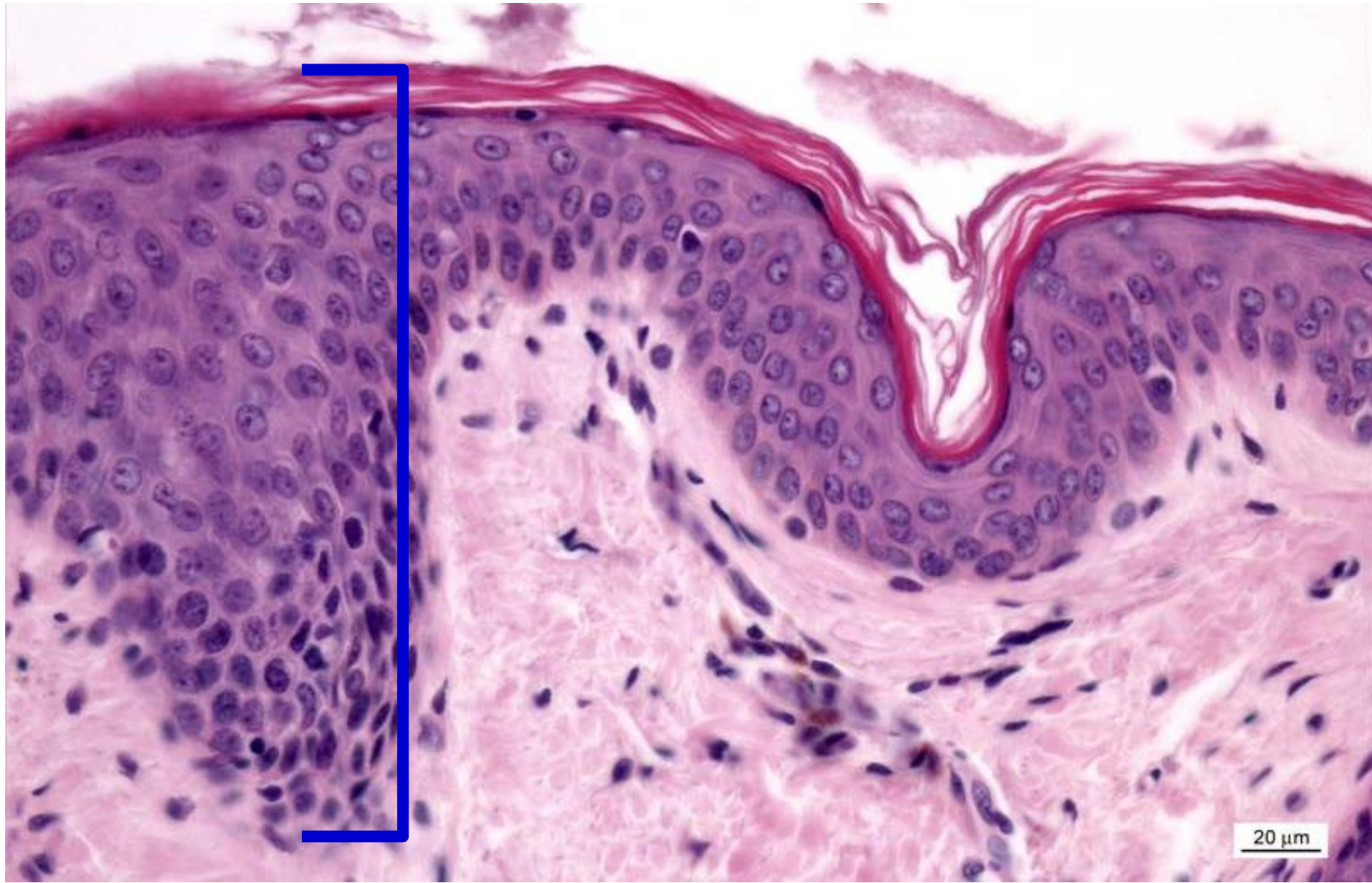
Stratified squamous epithelium – non-keratinized

– cornea



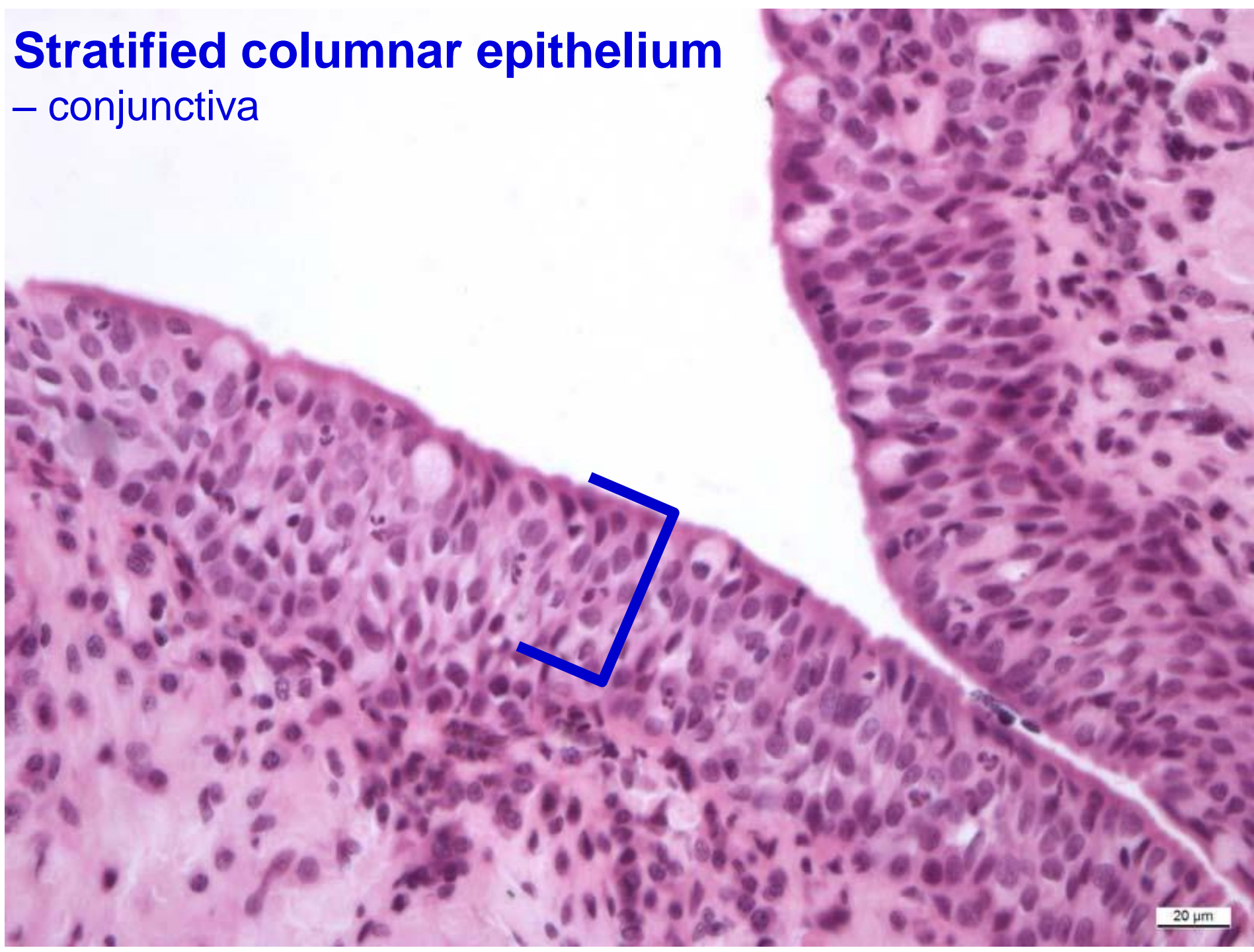
Stratified squamous epithelium – keratinized

– epidermis



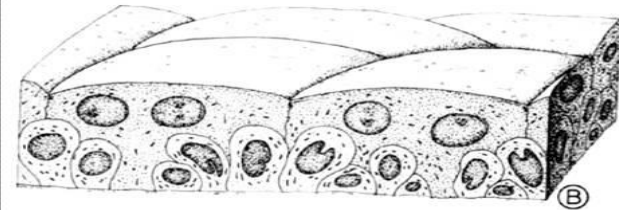
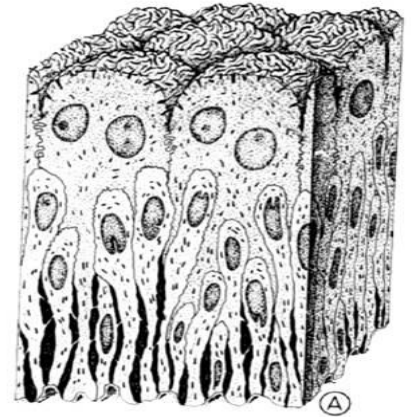
Stratified columnar epithelium

– conjunctiva



20 μm

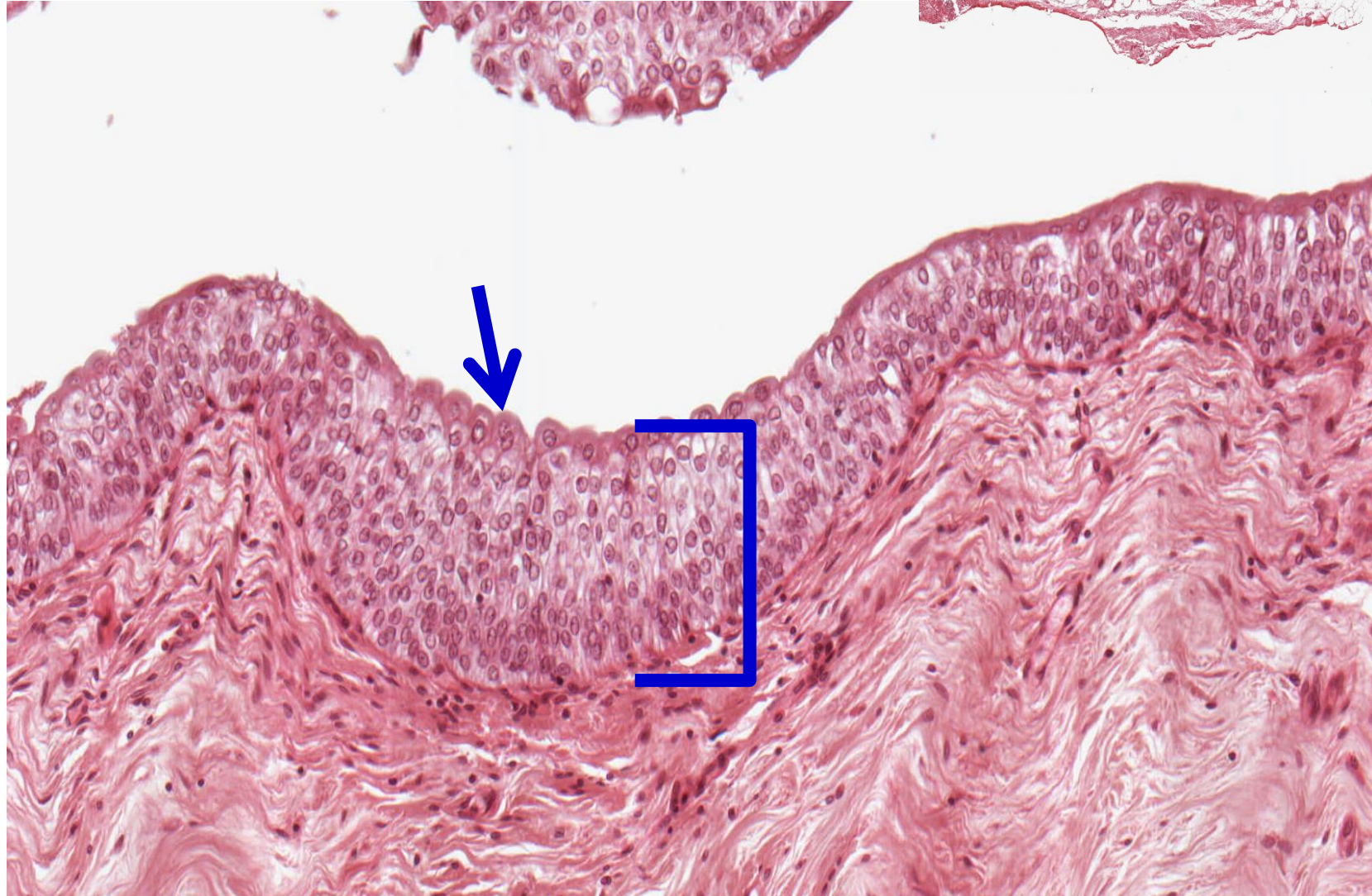
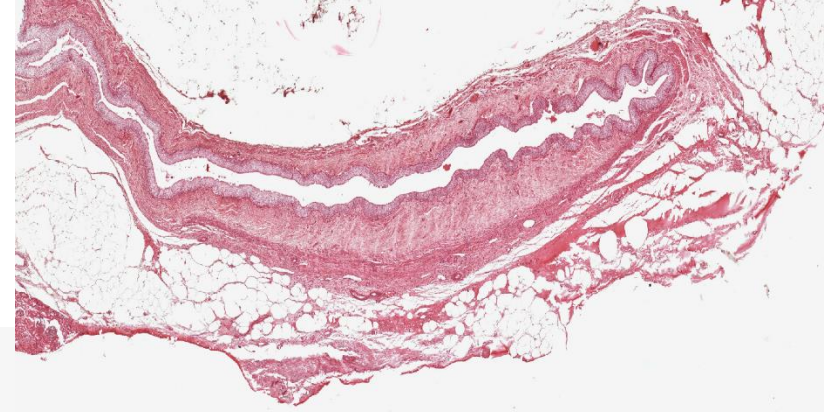
Transitional epithelium – ureter



20 μ m

Transitional epithelium

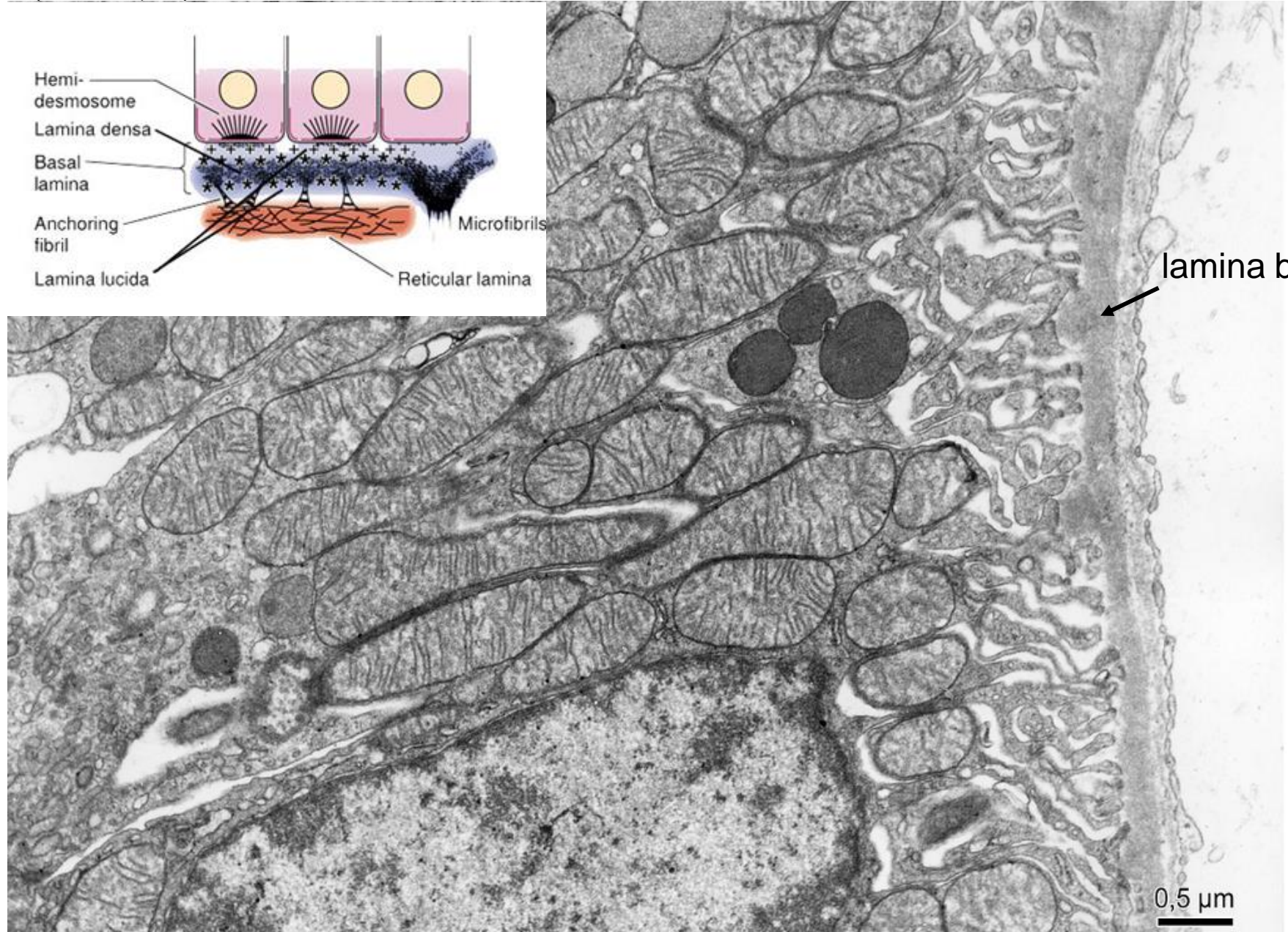
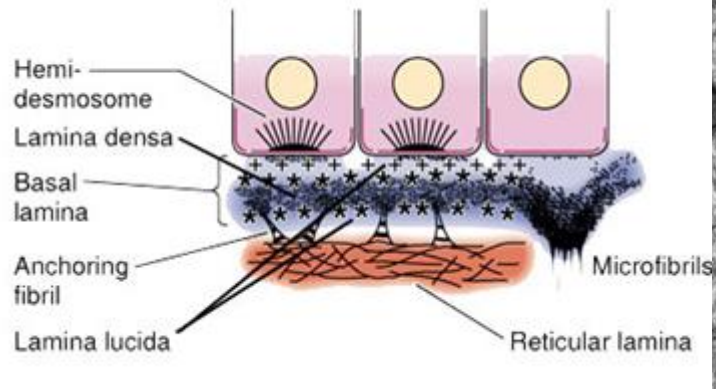
– calyx renalis



Basement membrane

(0,5 - 1 μm)

- Lamina basalis
- Lamina fibroreticularis



lamina basalis

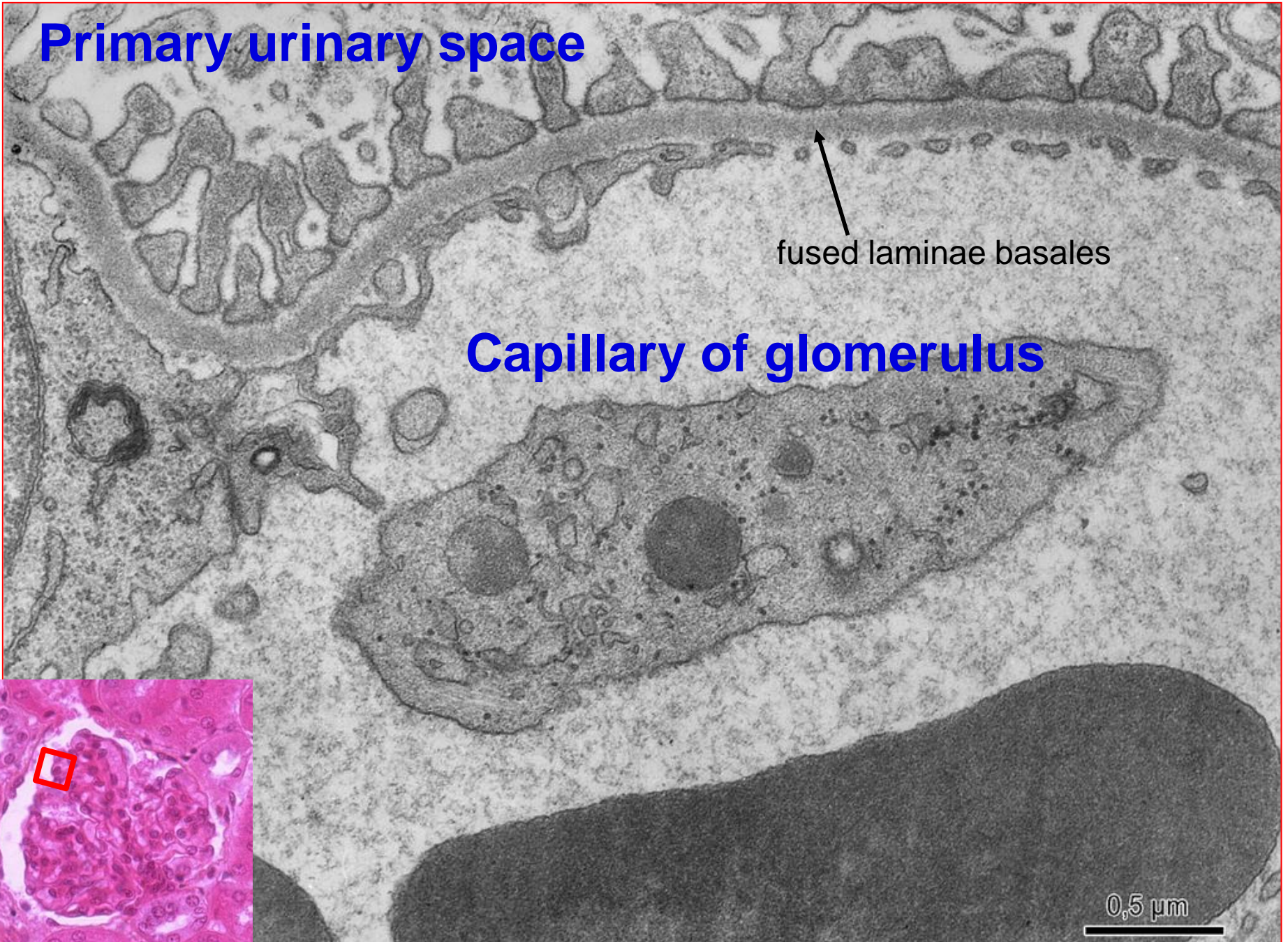
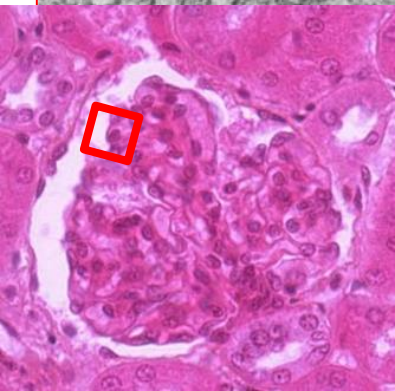
0,5 μm

Primary urinary space

fused laminae basales

Capillary of glomerulus

0,5 μ m



Covering epithelia

Slides:

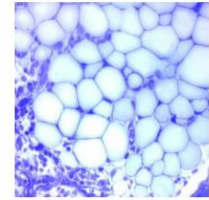
- Simple squamous and cuboidal epithelium (30, 31. Ren)
- Simple columnar epithelium (22. Vesica fellea)
- Pseudostratified columnar ep. with cilia (27. Trachea)
- Stratified squamous epithelium (11. Esophagus)
- Stratified keratinized squamous epithelium (69. Skin from finger tip)
- Transitional epithelium (32. Renal calyx, 33. Ureter)
- Stratified columnar epithelium (91. Palpebra)

Electronograms:

Atlas of Cytology and Embryology

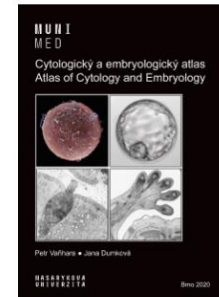
Histologický atlas

Doporučený studijní materiál



Cytologický a embryologický atlas

Doporučený studijní materiál



Numbers by the slides indicate their positions in sets in Microscopic Hall, not in online atlases. These numbers allow you to find the slides easily and study them using a microscope when the normal classes are opened.