

# Muscle tissue

# Muscle tissue

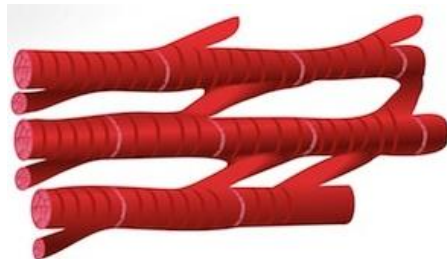
Striated skeletal



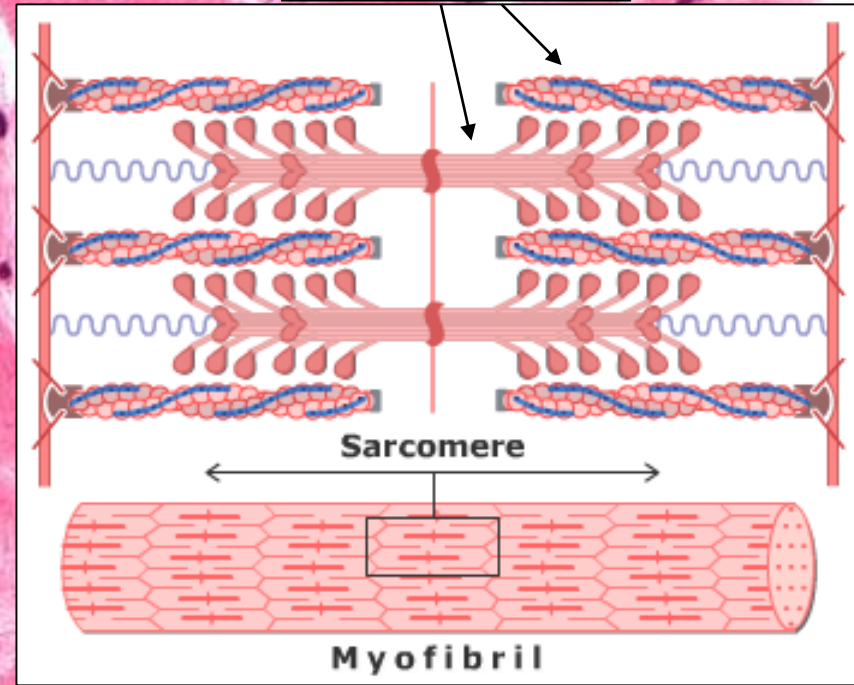
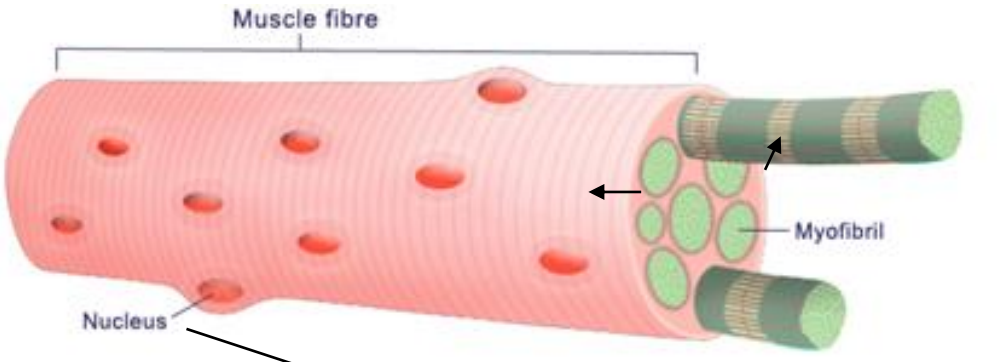
Smooth



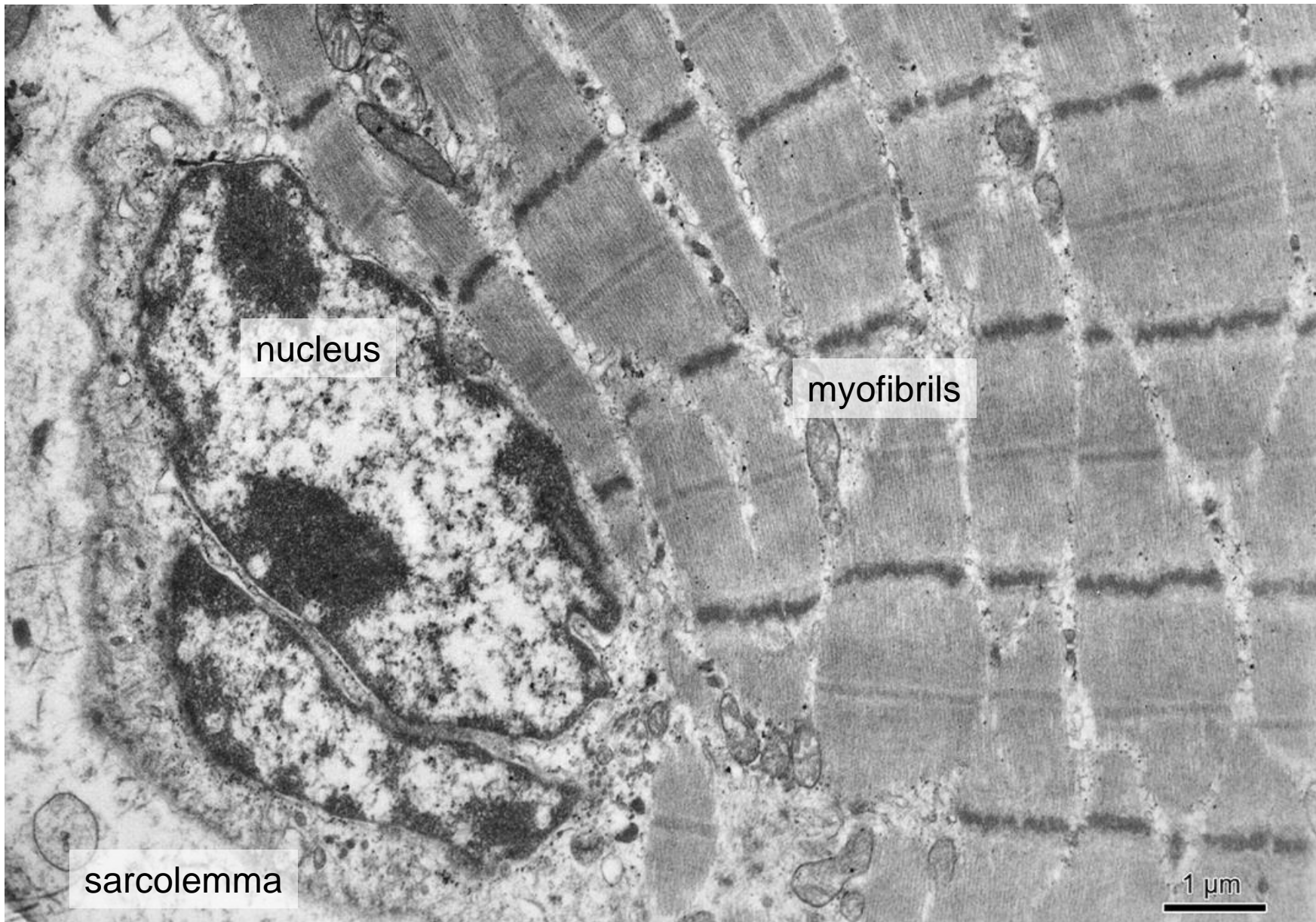
Striated cardiac



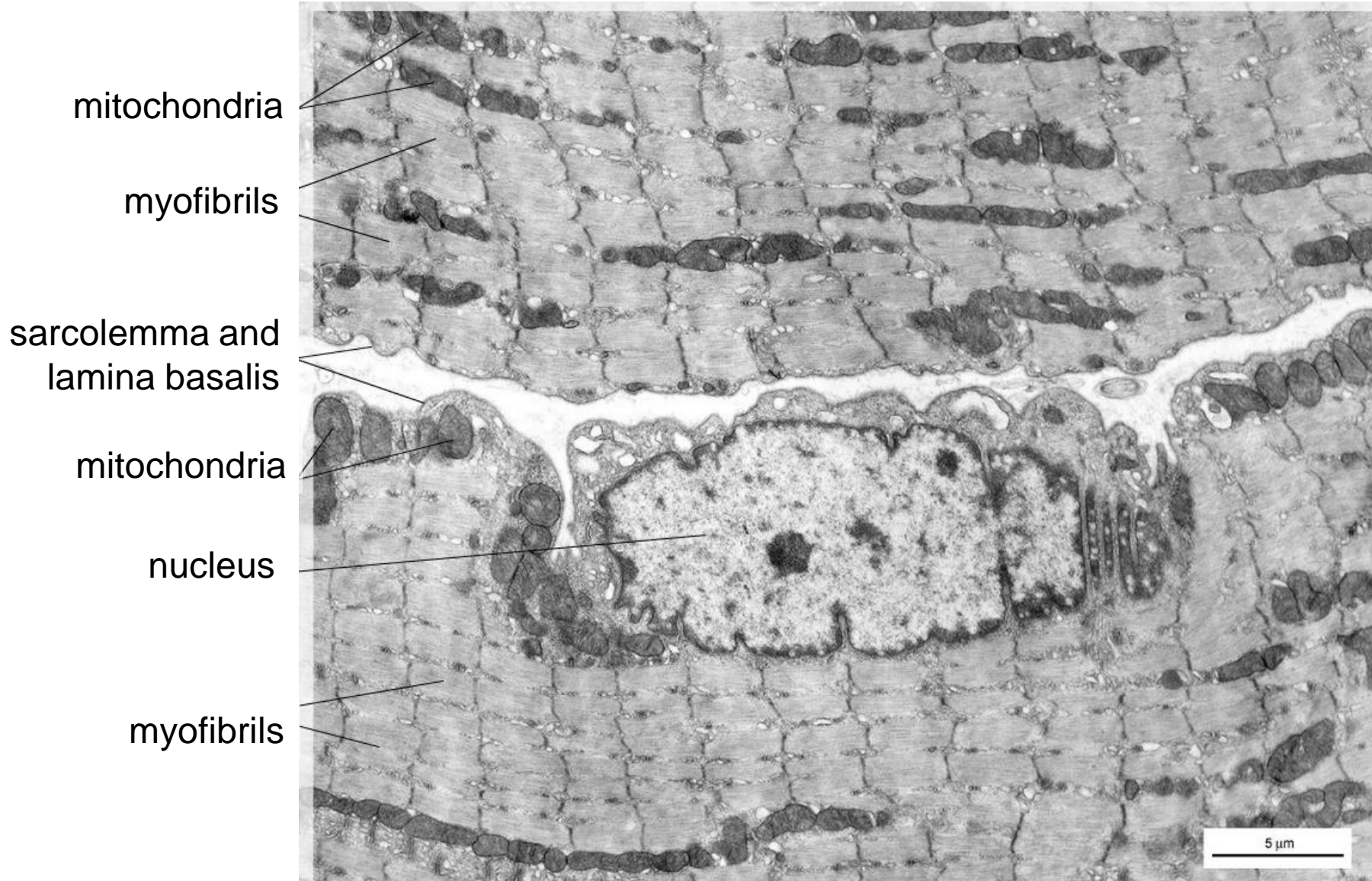
# Rhabdomyocyte



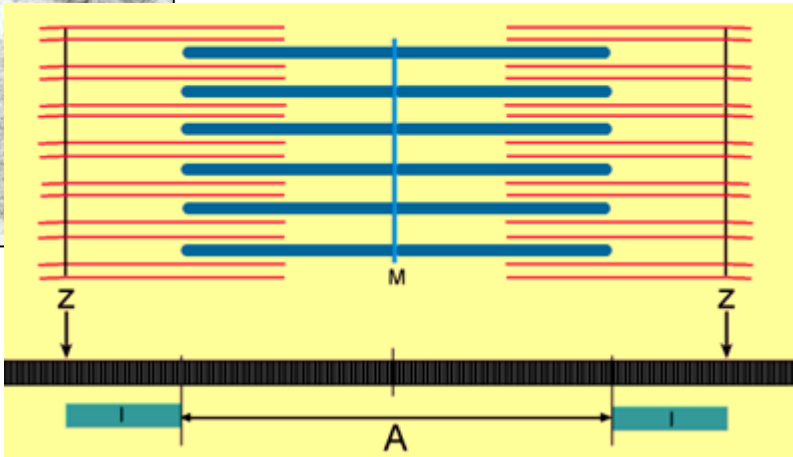
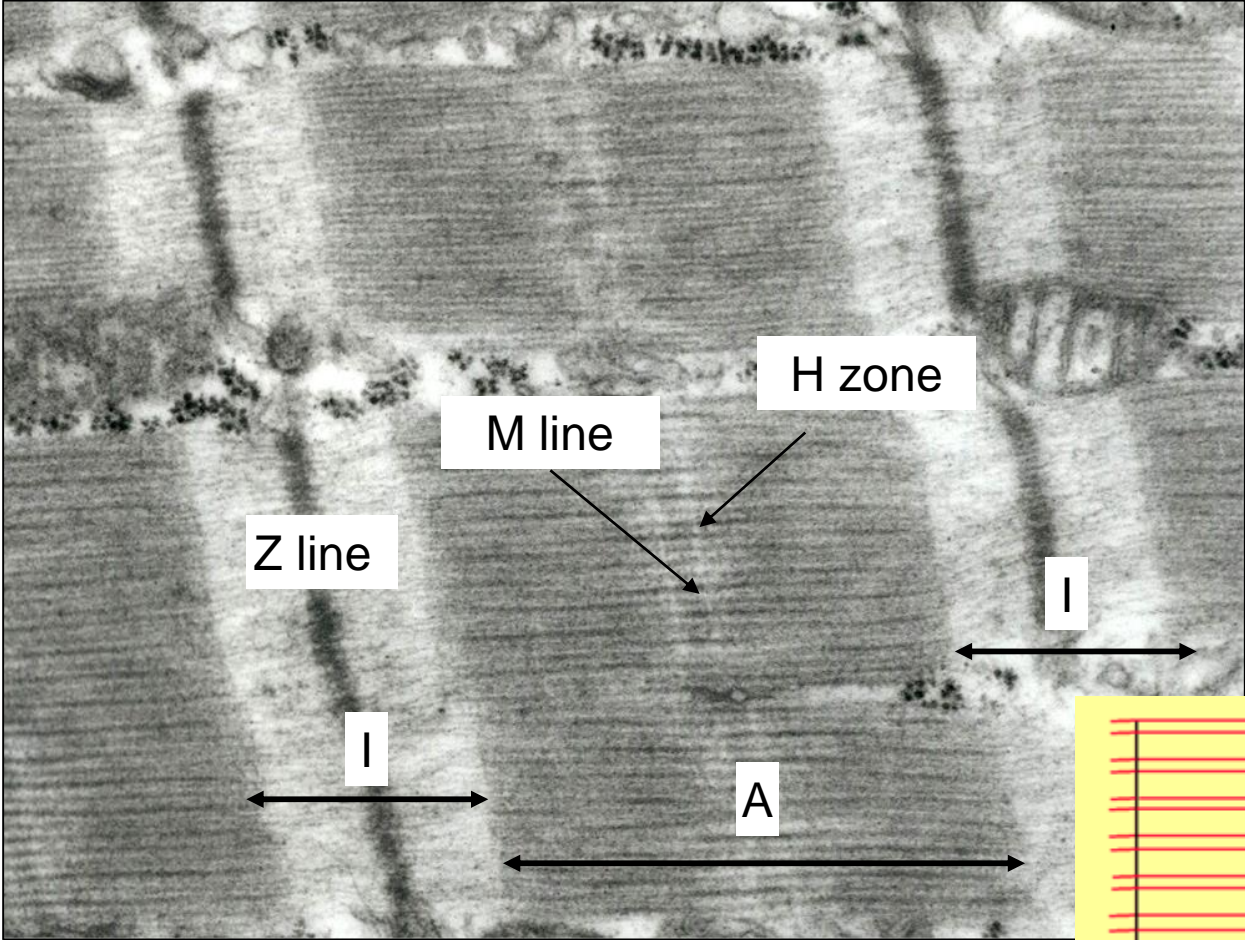
# Rhabdomyocyte



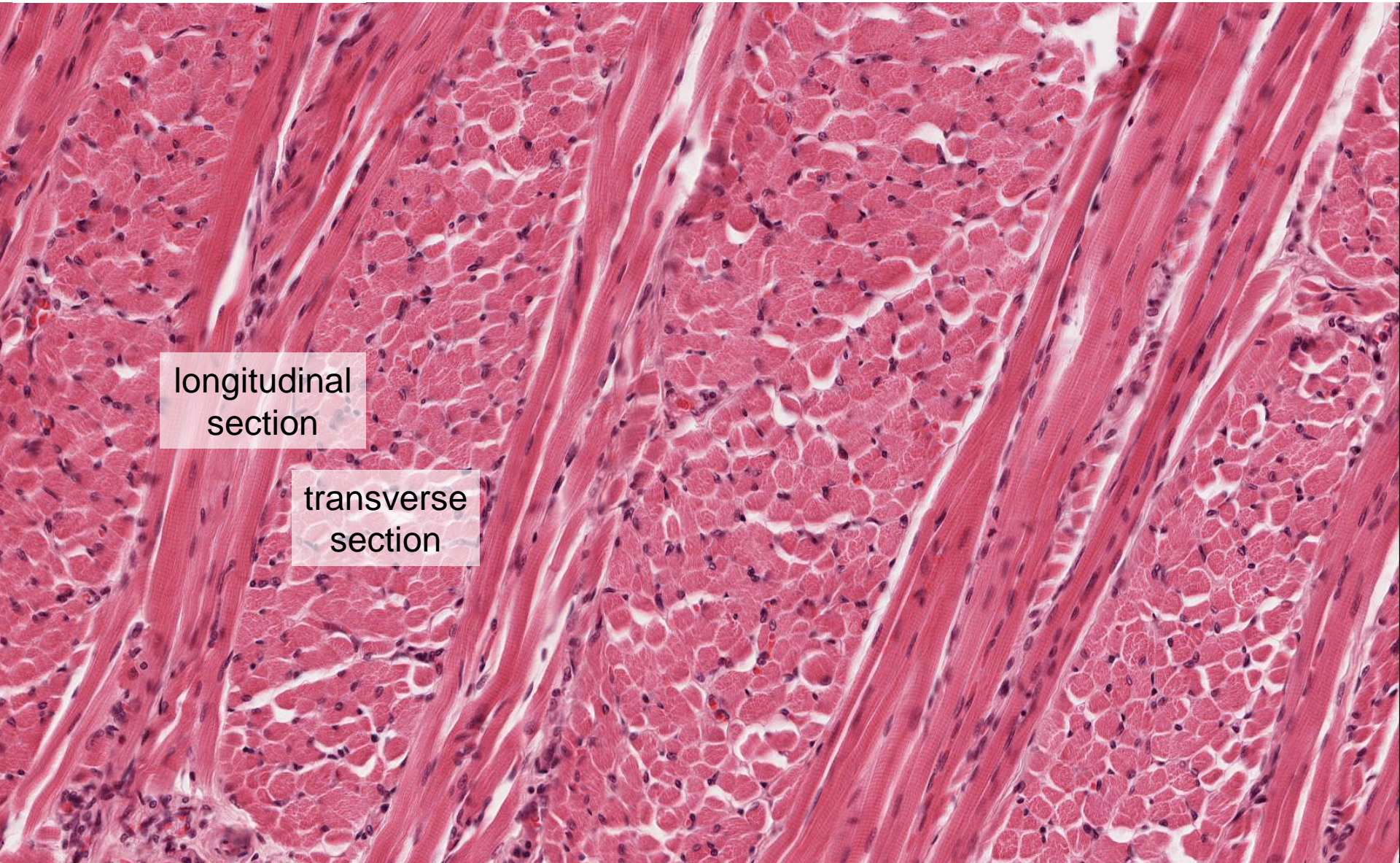
# Rhabdomyocyte



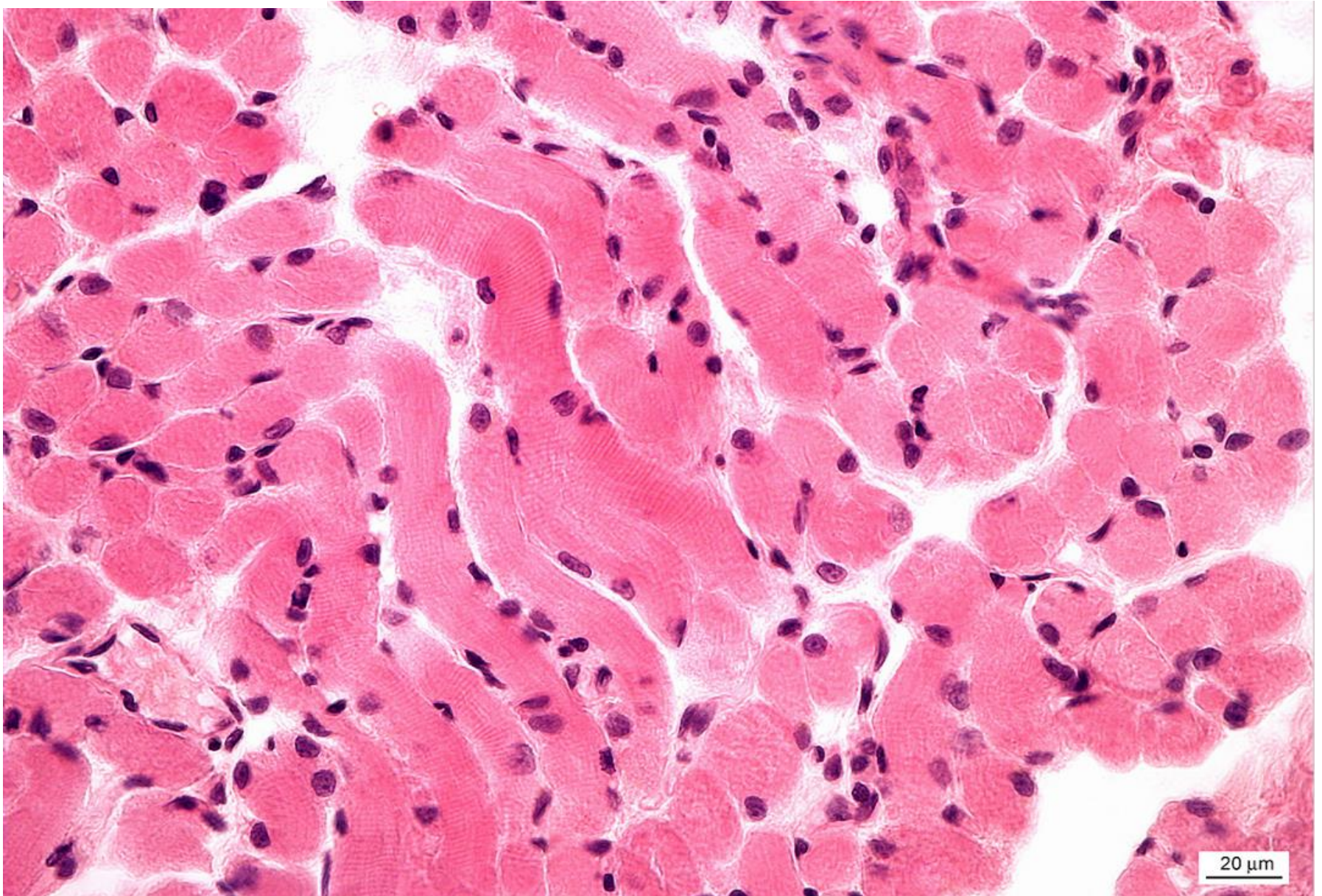
# Rhabdomyocyte



# Skeletal muscle tissue – Apex linguae

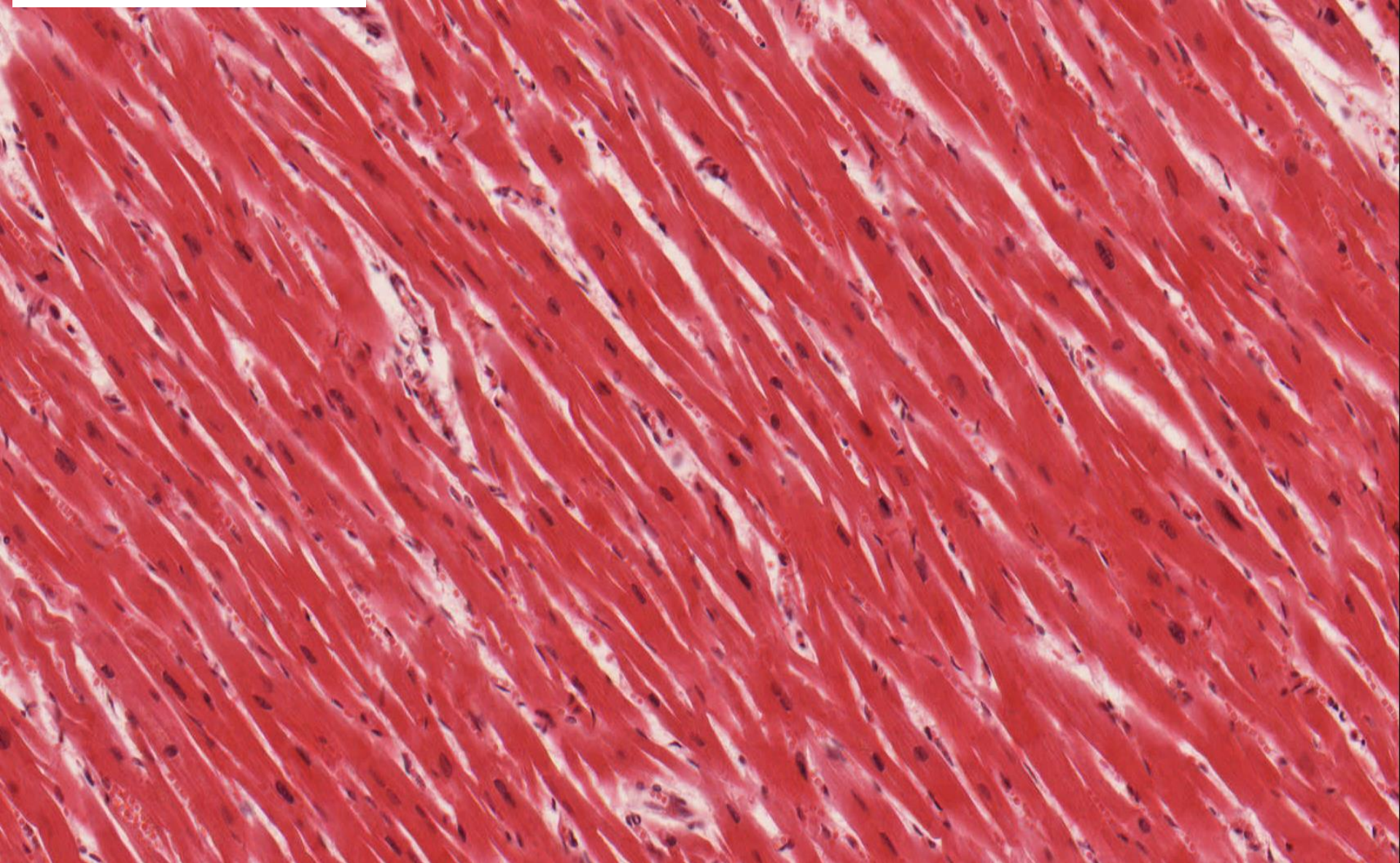


# Skeletal muscle tissue – rhabdomyocytes

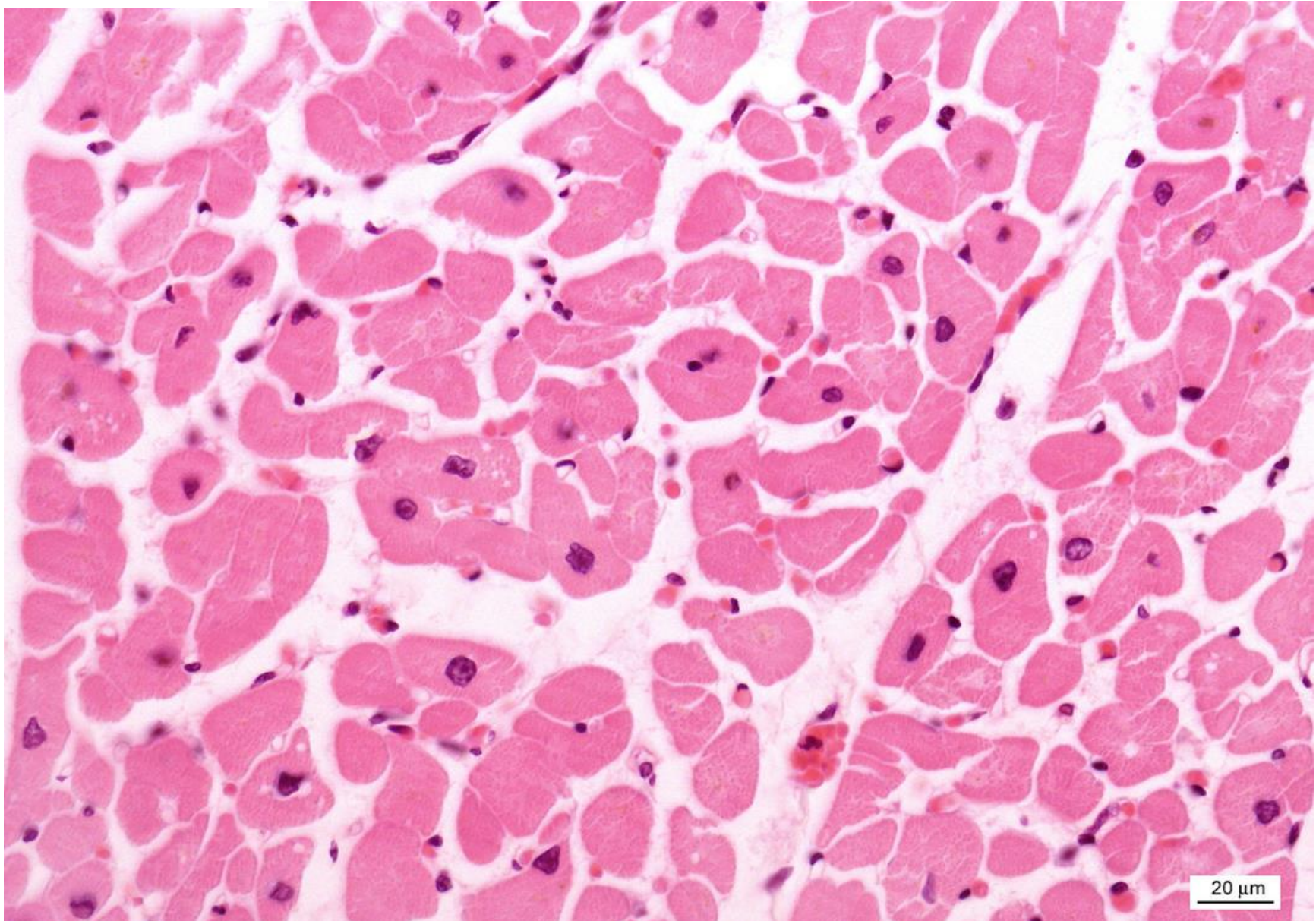




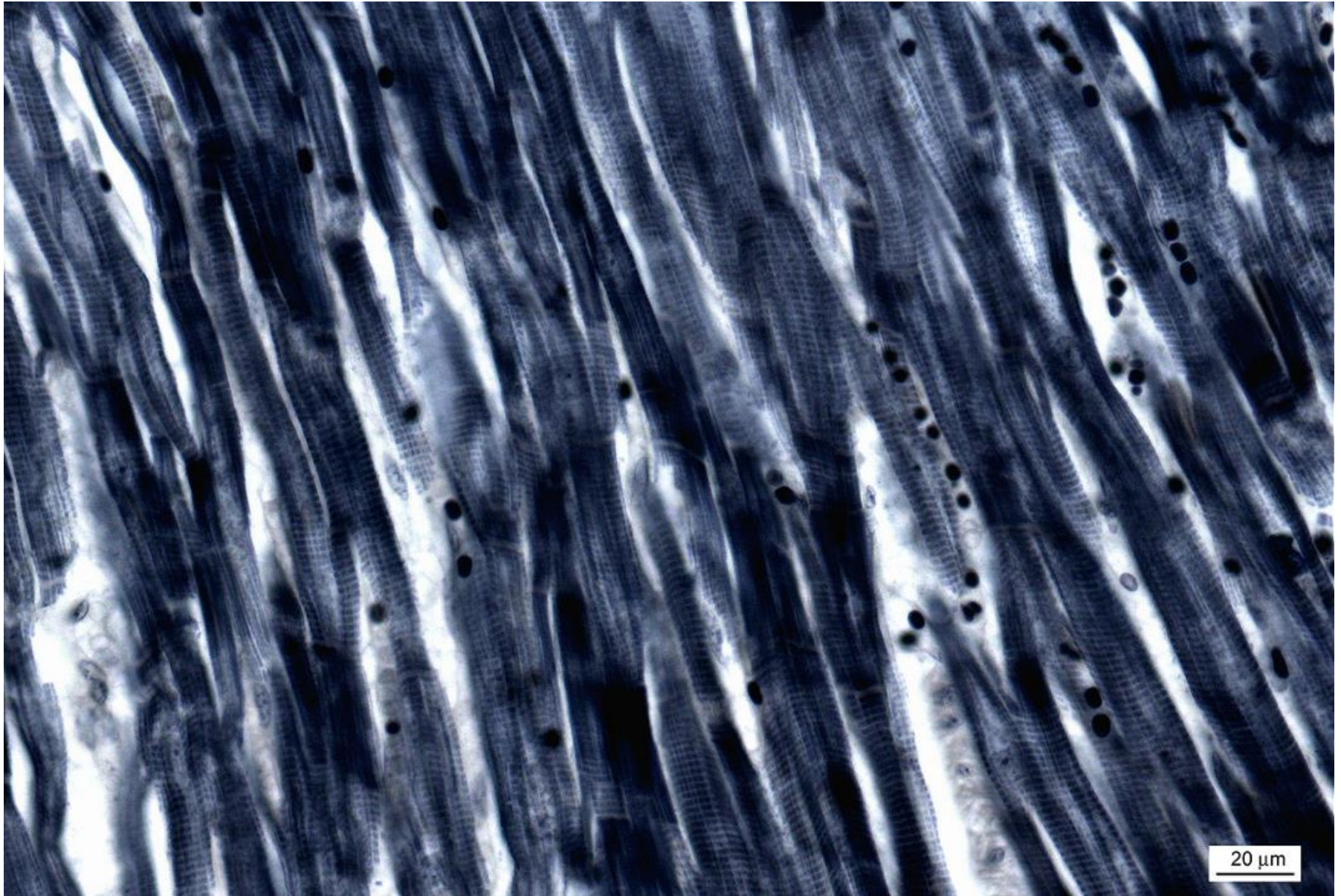
# Cardiac muscle tissue (HE) - longitudinal



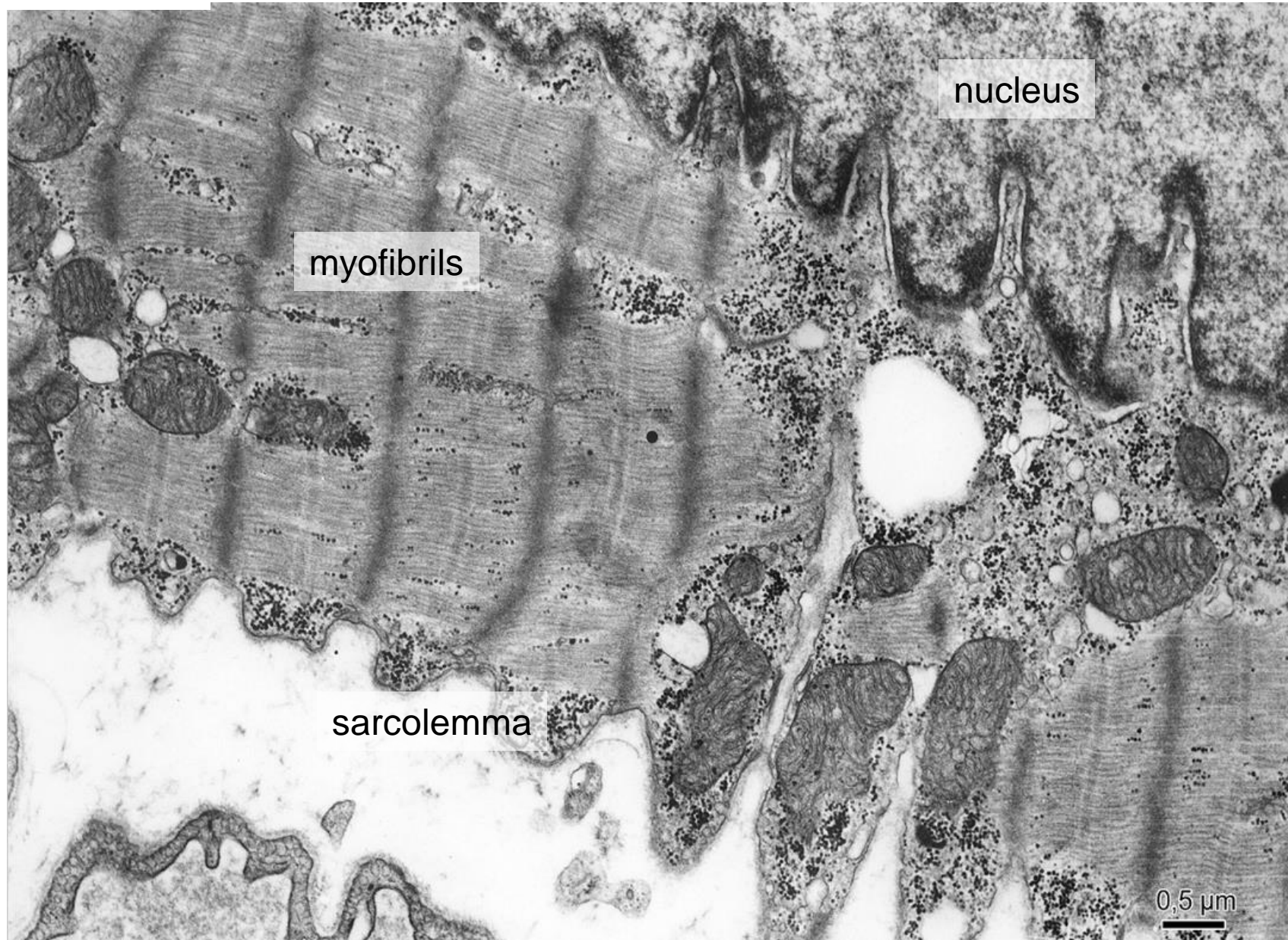
# Cardiac muscle tissue (HE) - transverse



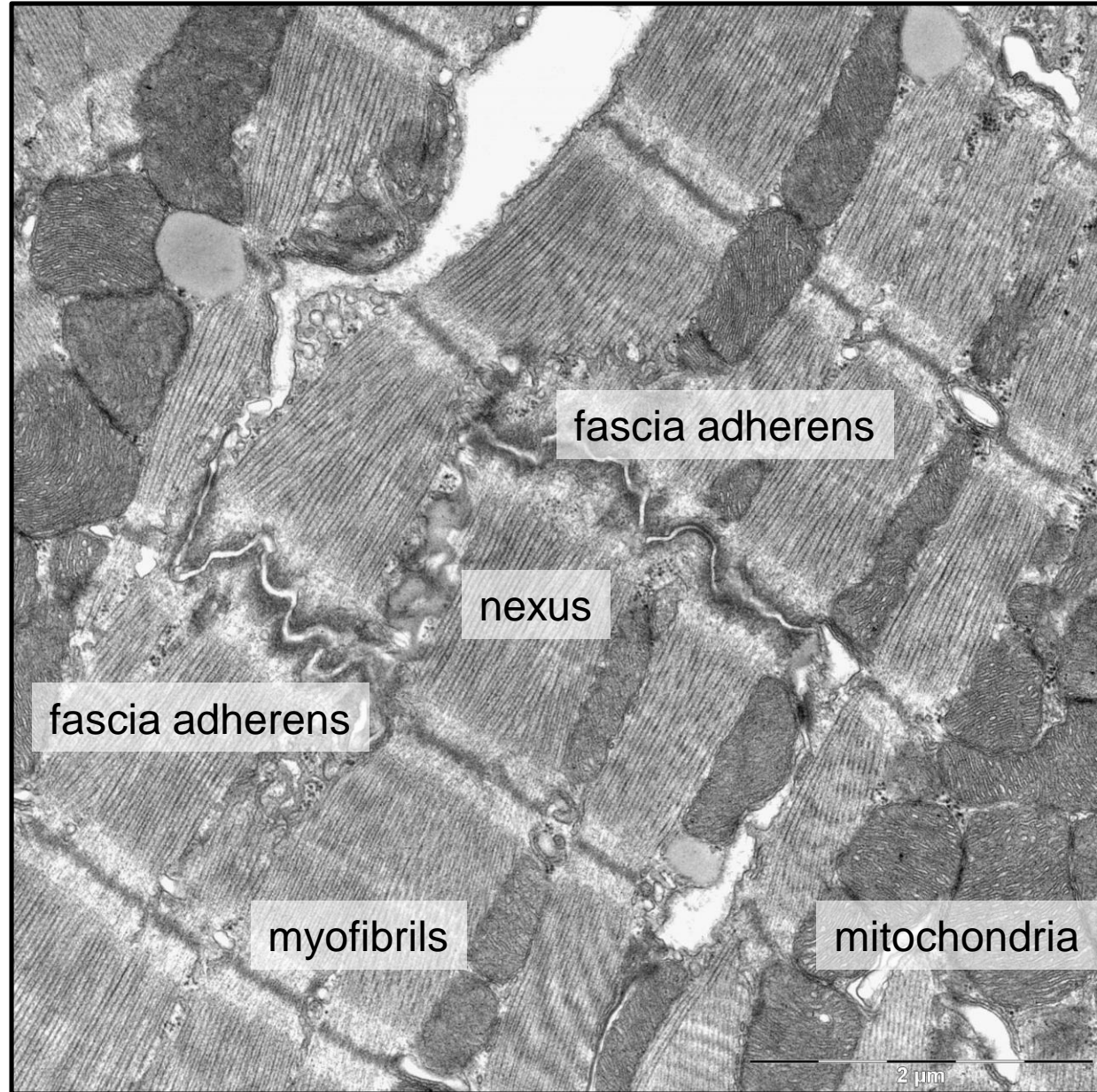
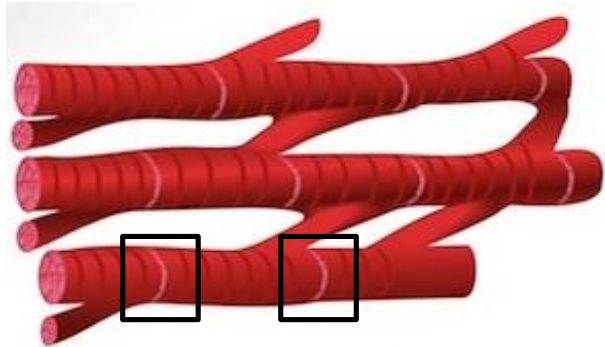
# Cardiac muscle tissue (Heidenhein)



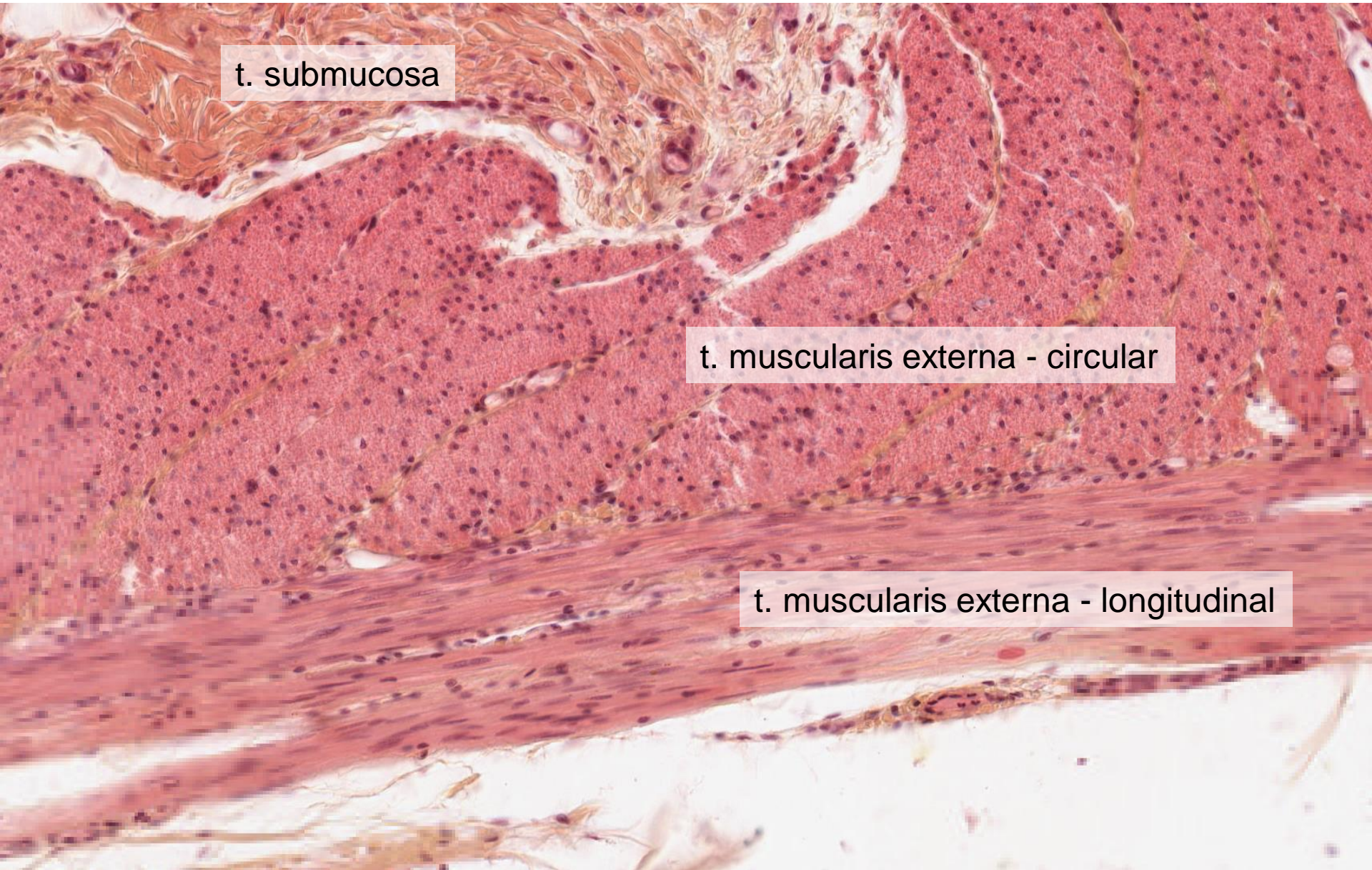
# Cardiomyocyte



# Cardiomyocyte - intercalated disc



# Smooth muscle tissue – Intestinum tenue

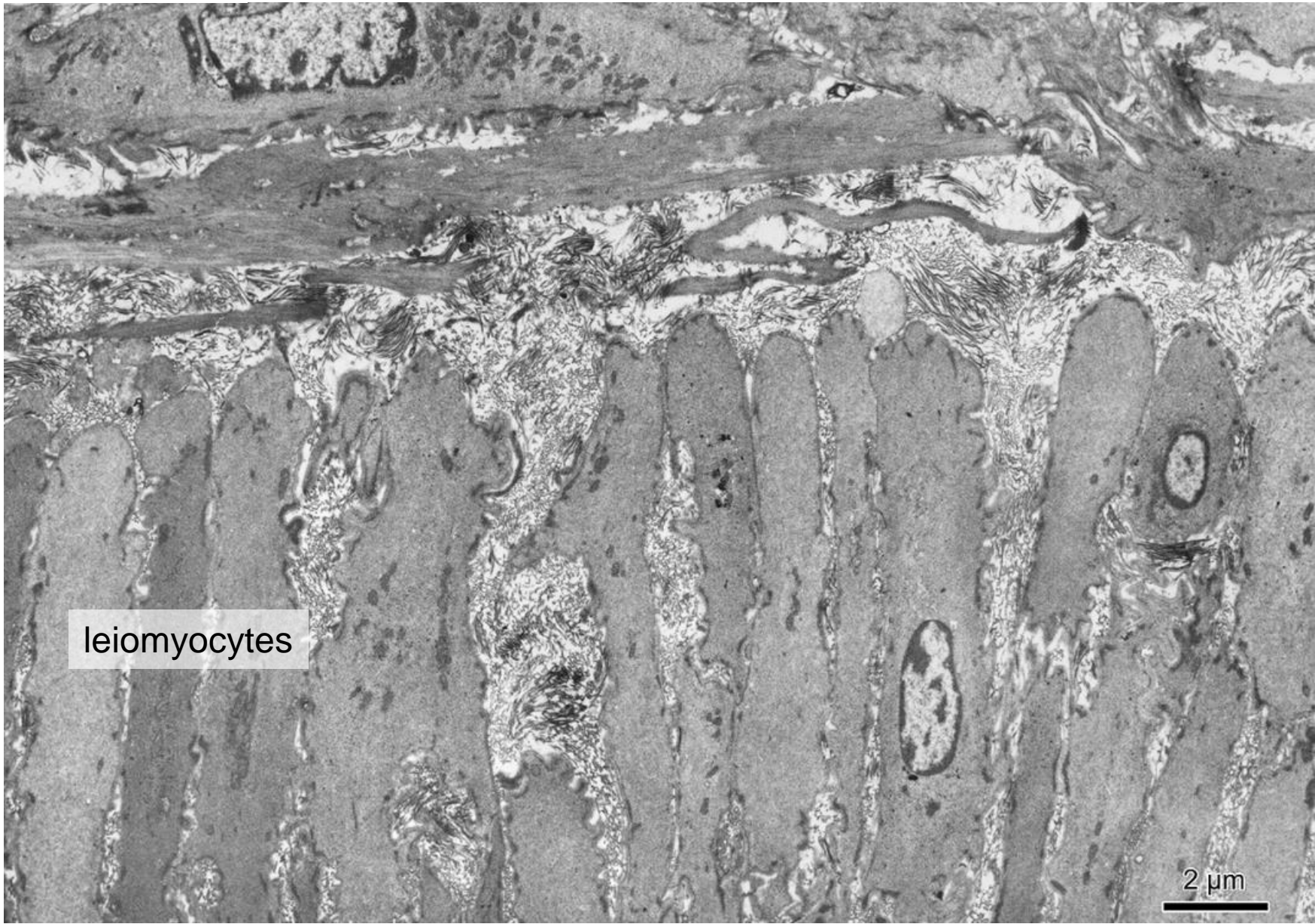


t. submucosa

t. muscularis externa - circular

t. muscularis externa - longitudinal

# Leiomyocyte



leiomyocytes

2 μm

## Slides:

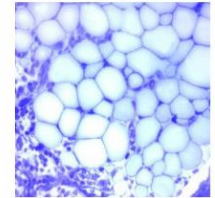
Striated skeletal muscle tissue (2. Apex linguae)  
Smooth muscle tissue (17. Intestinum crassum)  
Striated cardiac muscle tissue (64, 65 Myocardium)

## Electronograms:

Atlas of Cytology and Embryology

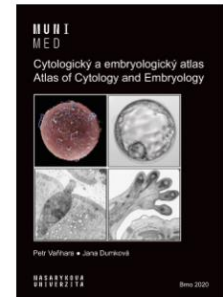
### Histologický atlas

*Doporučený studijní materiál*



### Cytologický a embryologický atlas

*Doporučený studijní materiál*



Numbers by the slides indicate their positions in sets in Microscopic Hall, not in online atlases. These numbers allow you to find the slides easily and study them using a microscope when the normal classes are opened.