

Connective tissue - cartilage and bone

Connective tissue - cartilage and bone

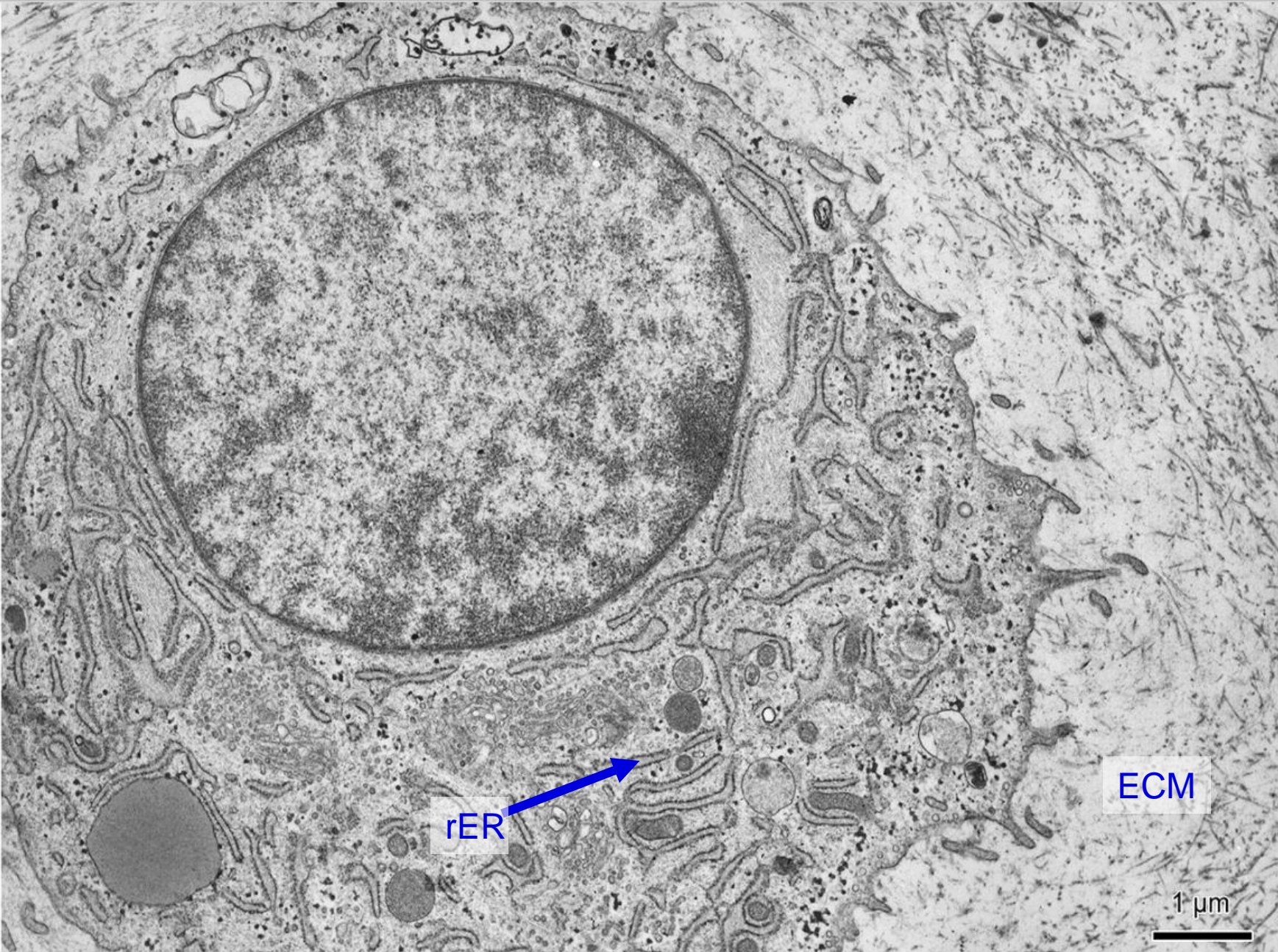
Cartilage

- hyaline
- elastic
- fibrous

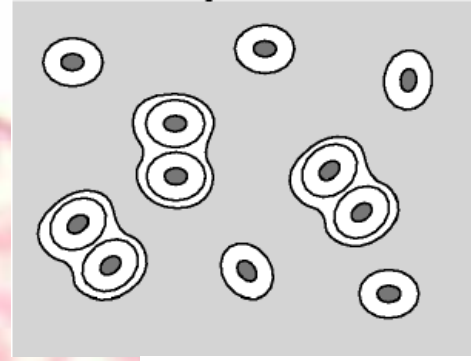
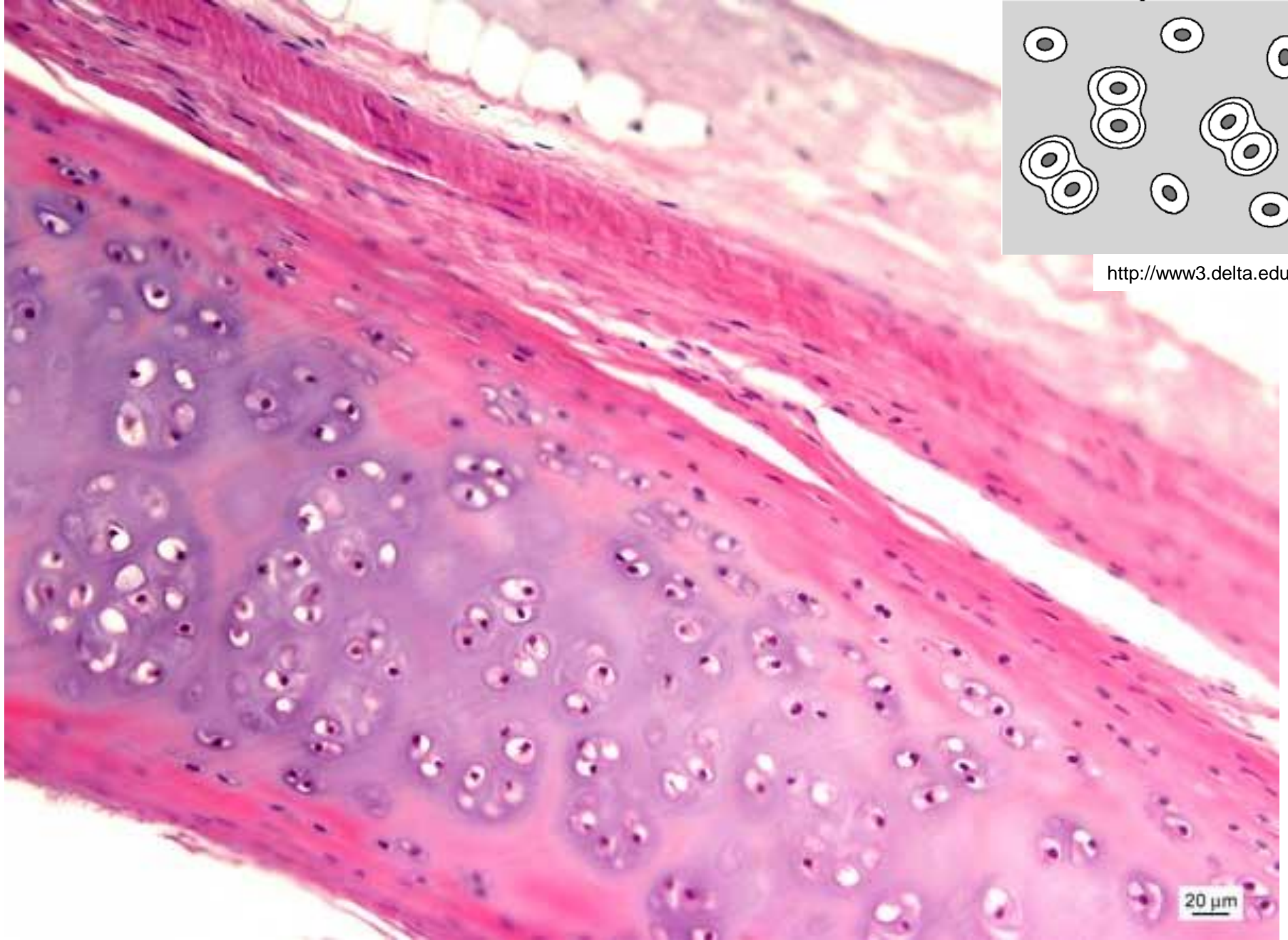
Bone

- woven (primary)
- lamellar (secondary)
 - compact
 - spongy

Chondrocyt – producer of ECM



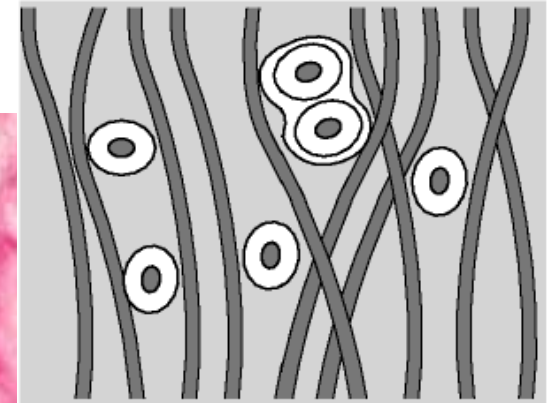
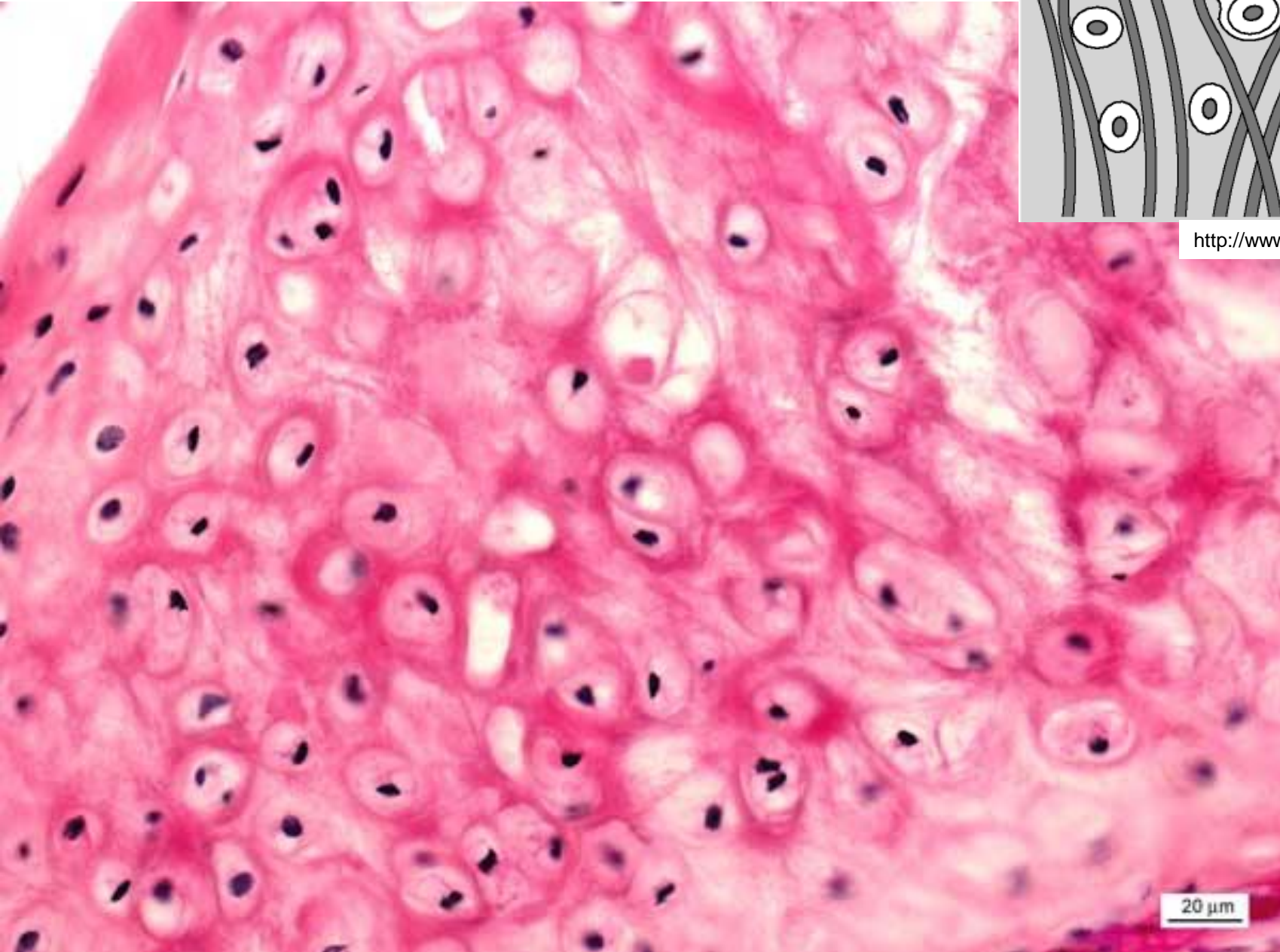
Hyaline cartilage - trachea (HE)



<http://www3.delta.edu/>

20 μm

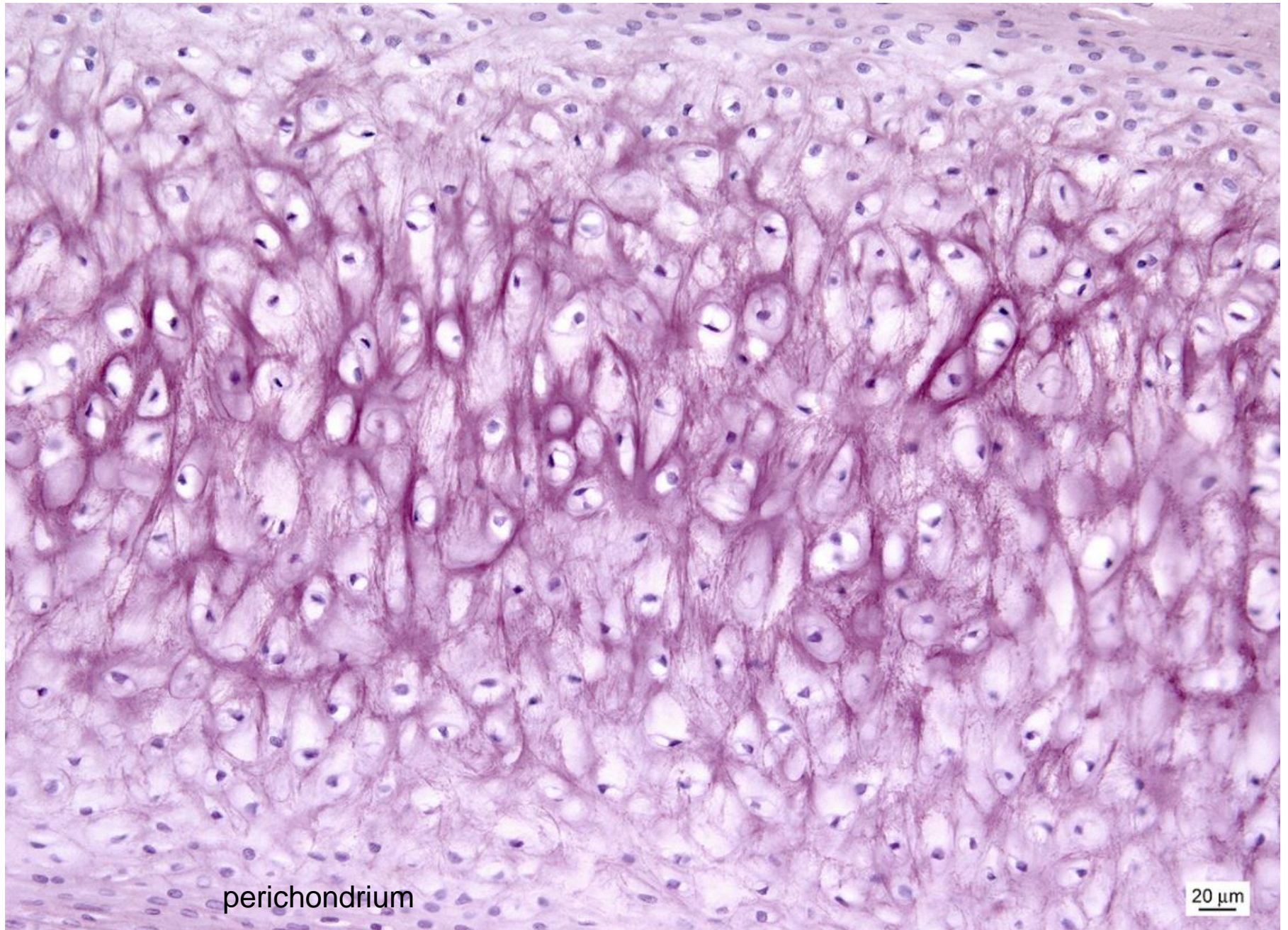
Elastic cartilage – auricula (HE)



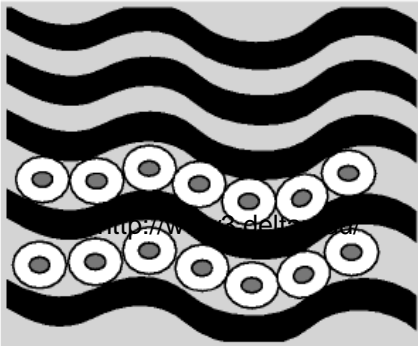
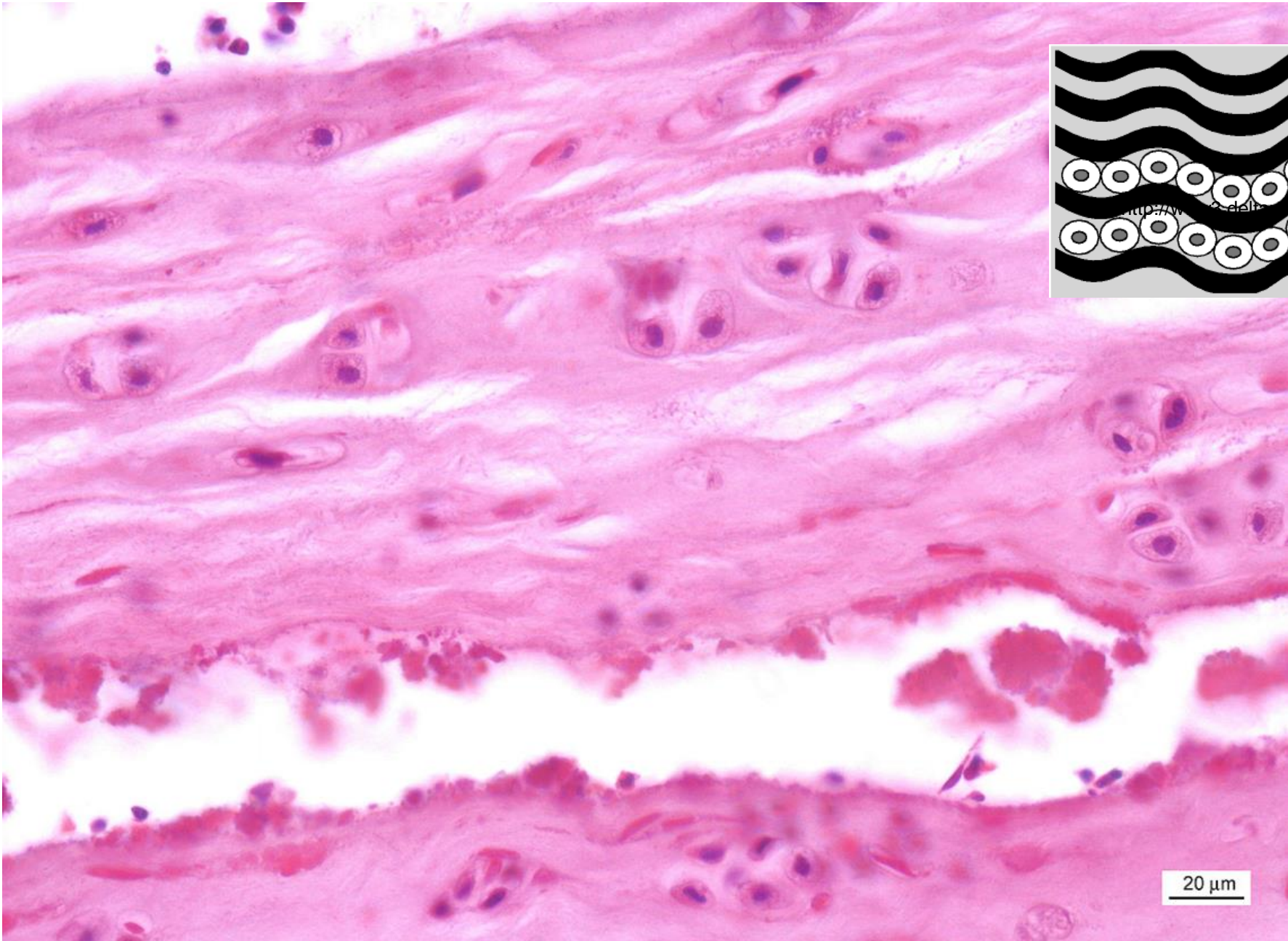
<http://www3.delta.edu/>

20 μm

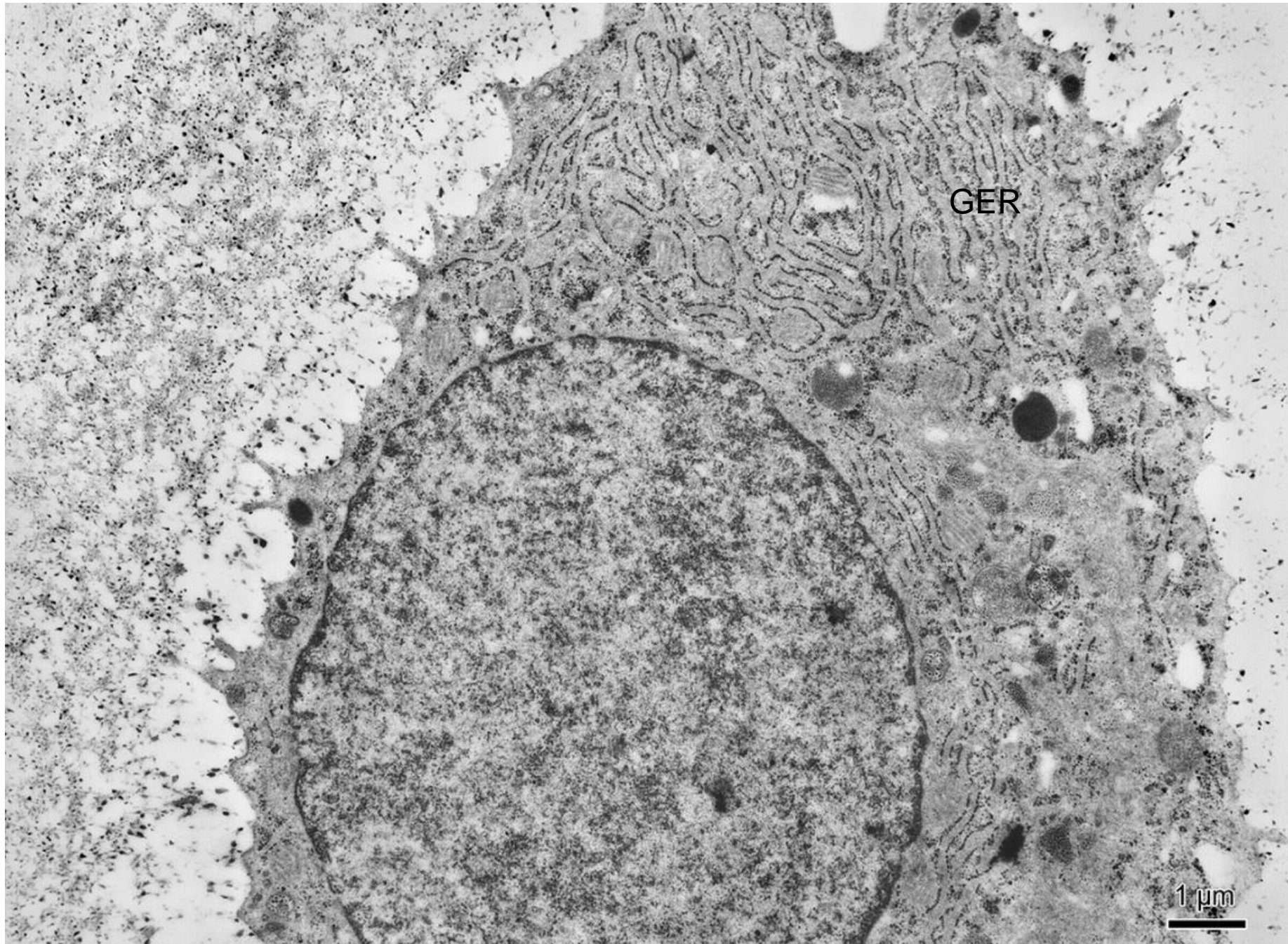
Elastic cartilage (fuchsin)



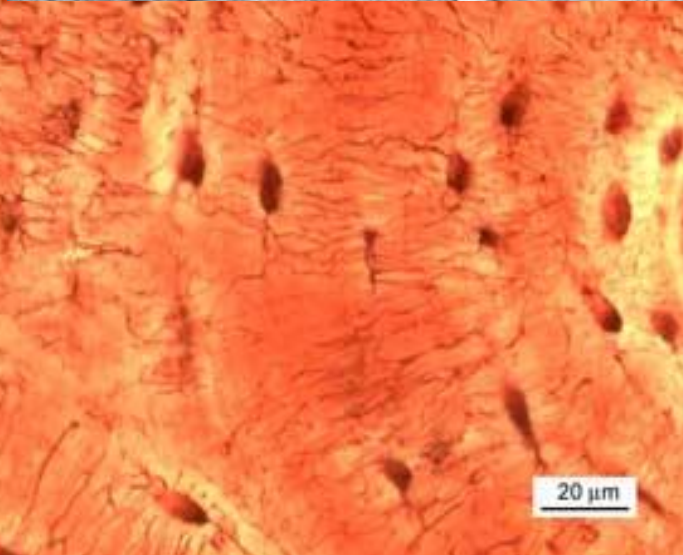
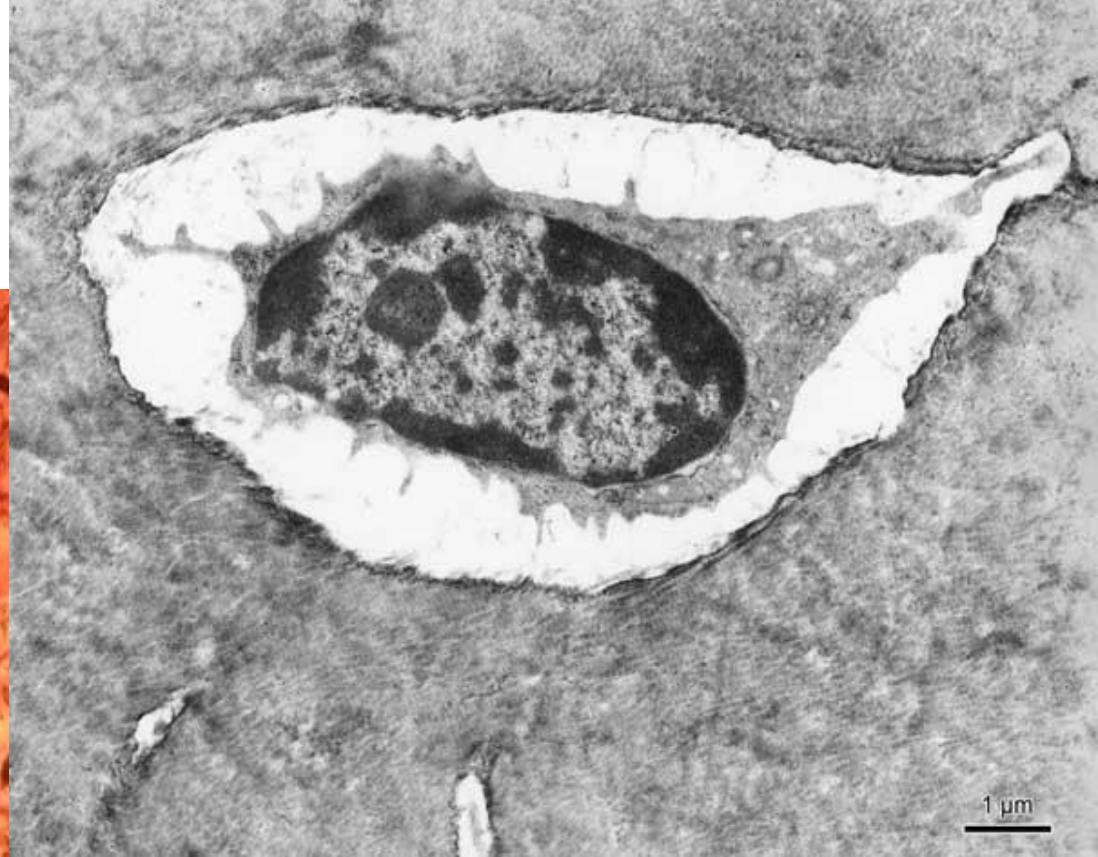
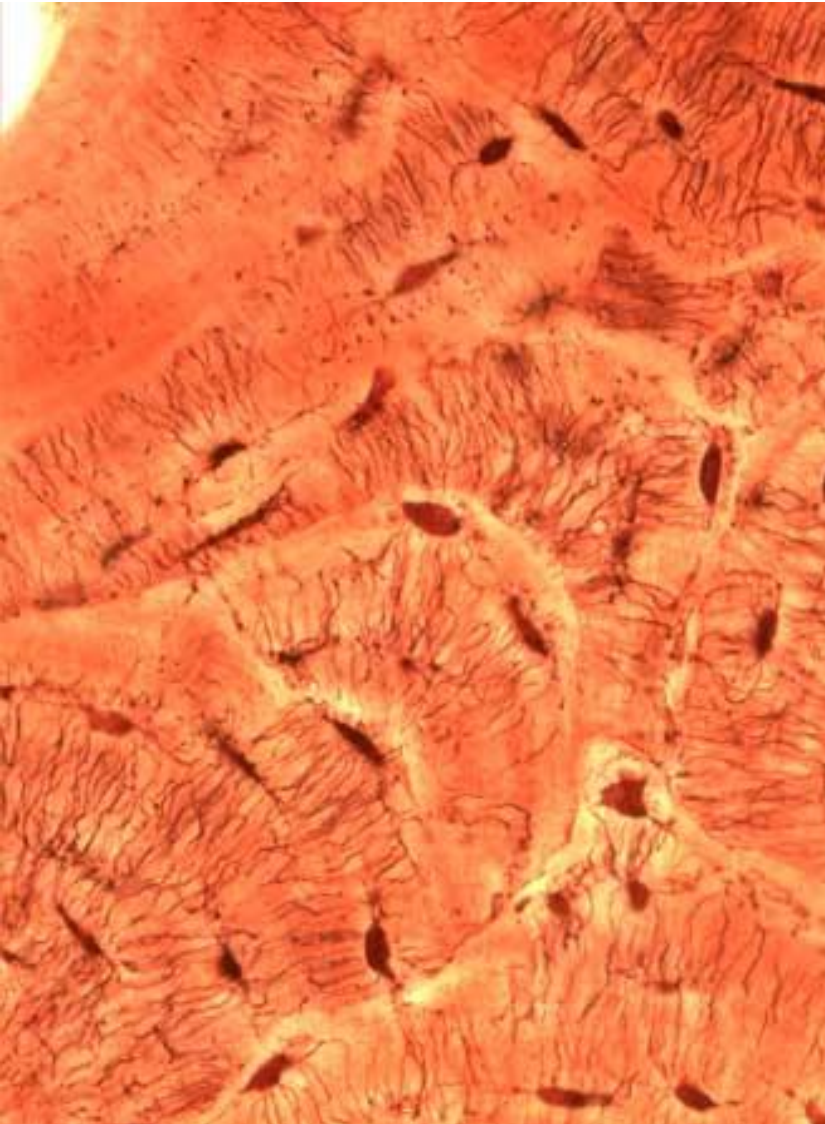
Fibrous cartilage (fibrocartilage) – intervertebral disc (HE)



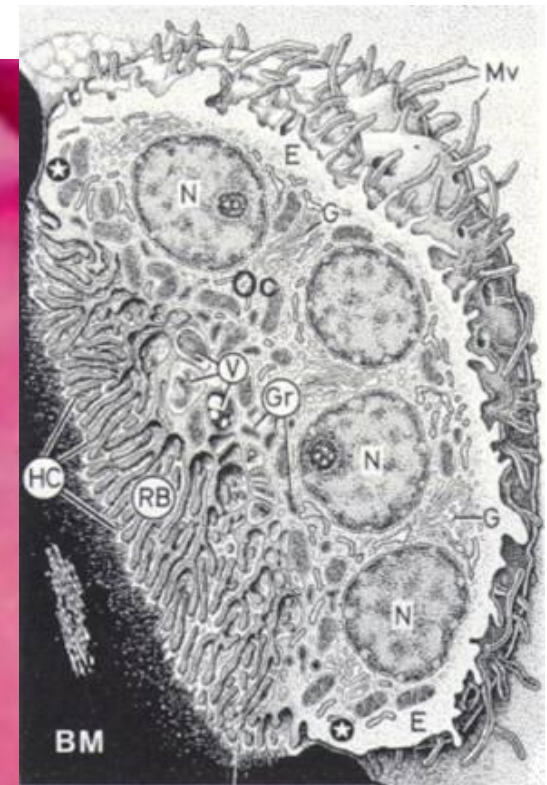
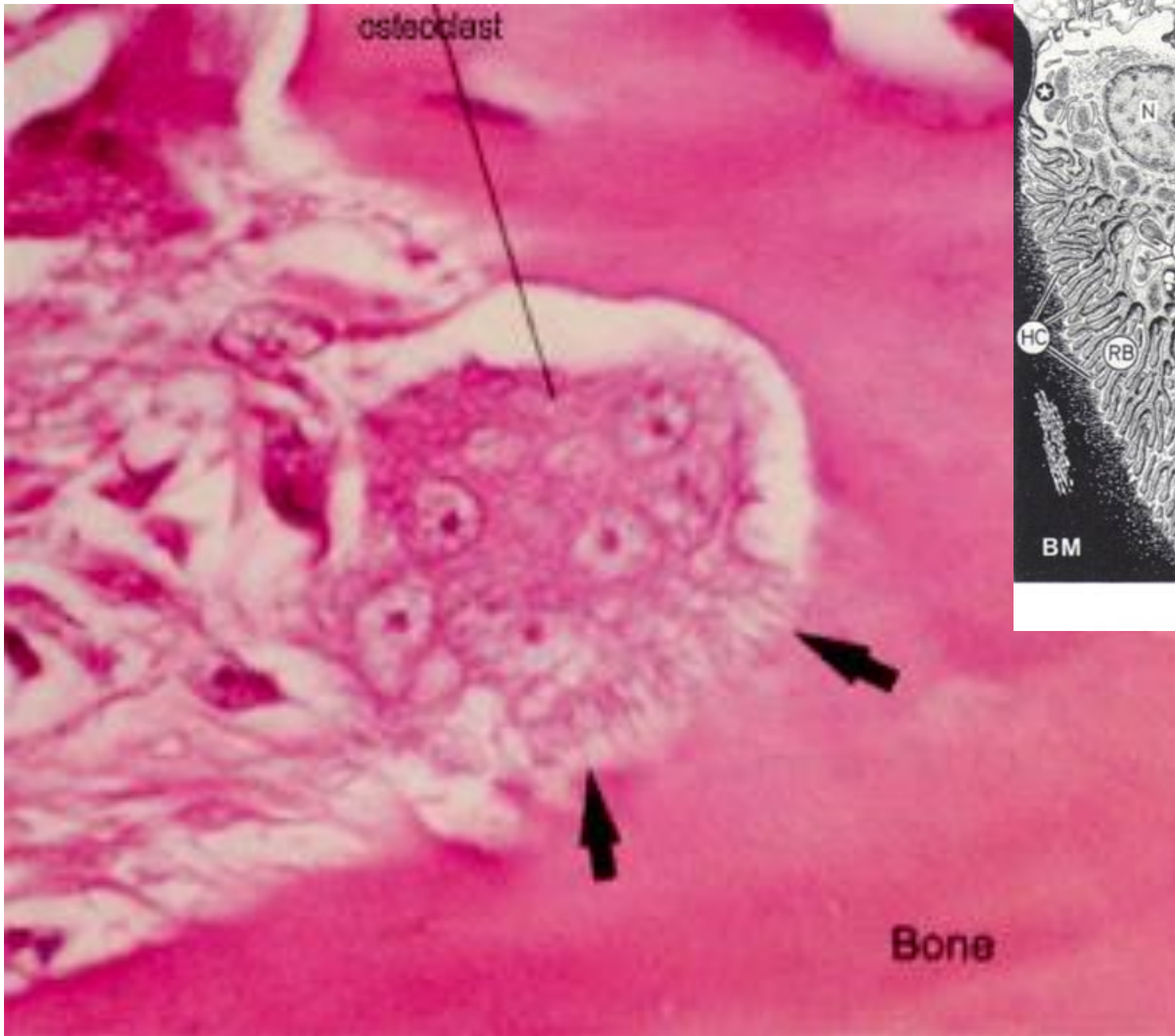
Osteoblast - producer of mineralized matrix



Osteocyte - local bone remodeling and sensing



Osteoclast - bone resorption



www.studyblue.com

Bone cells altogether

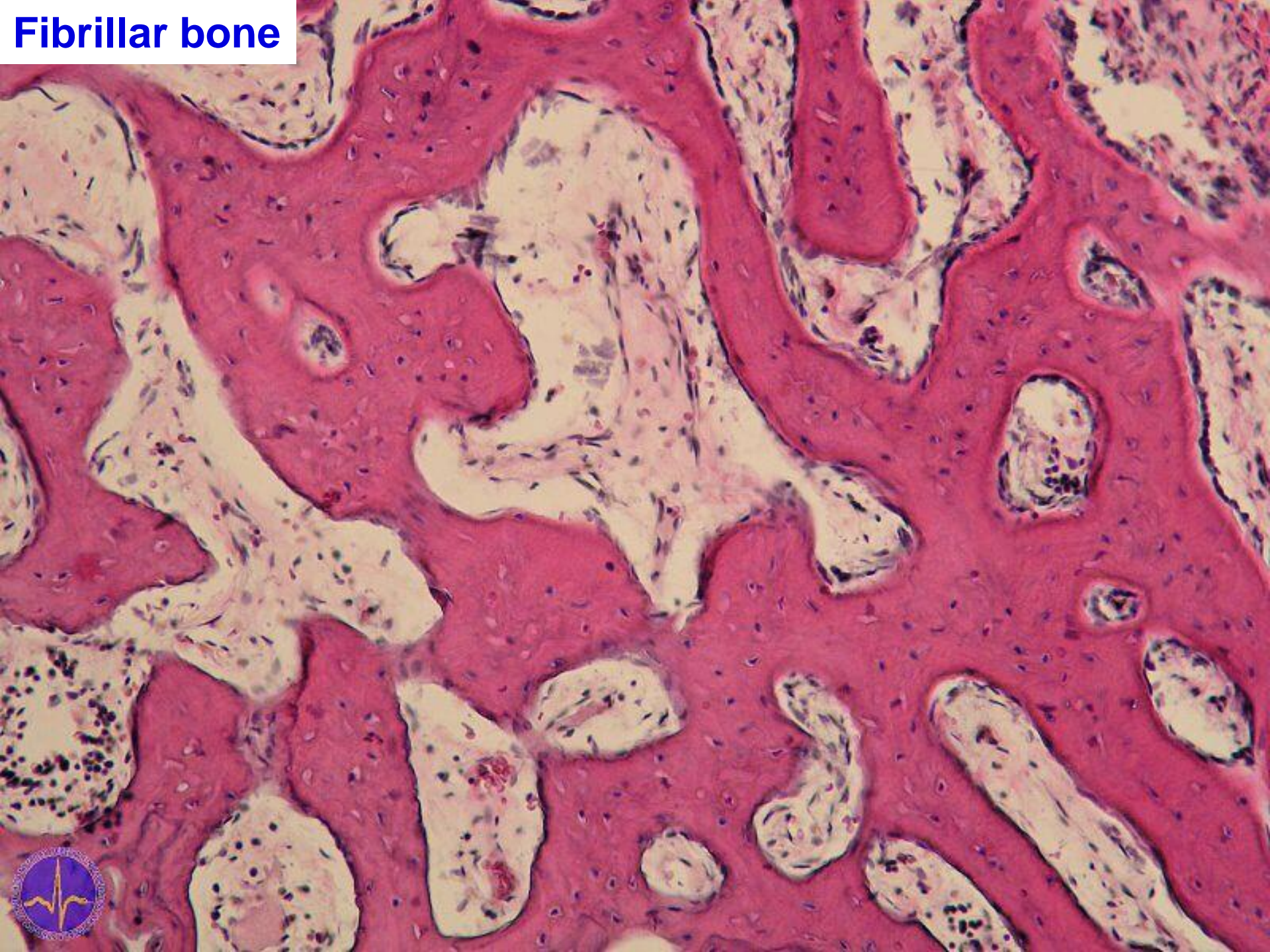
osteoblasts



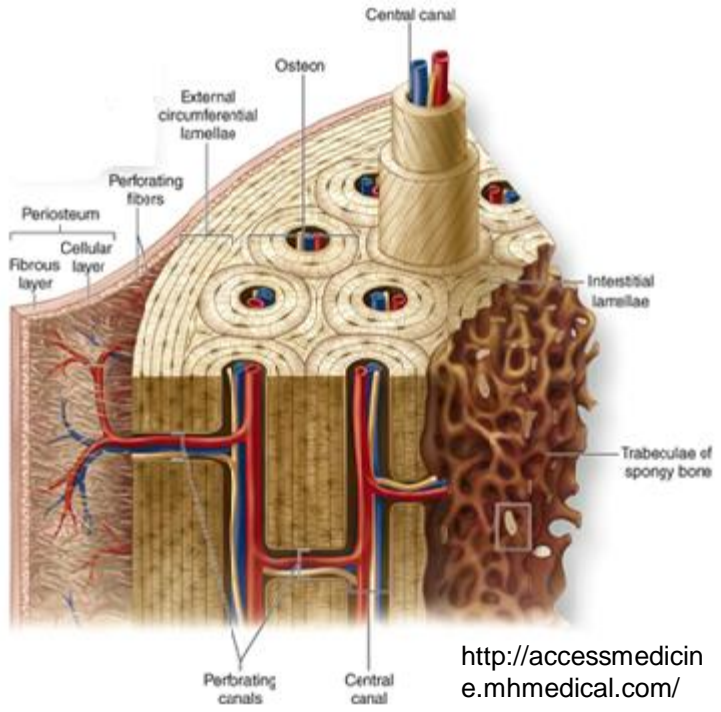
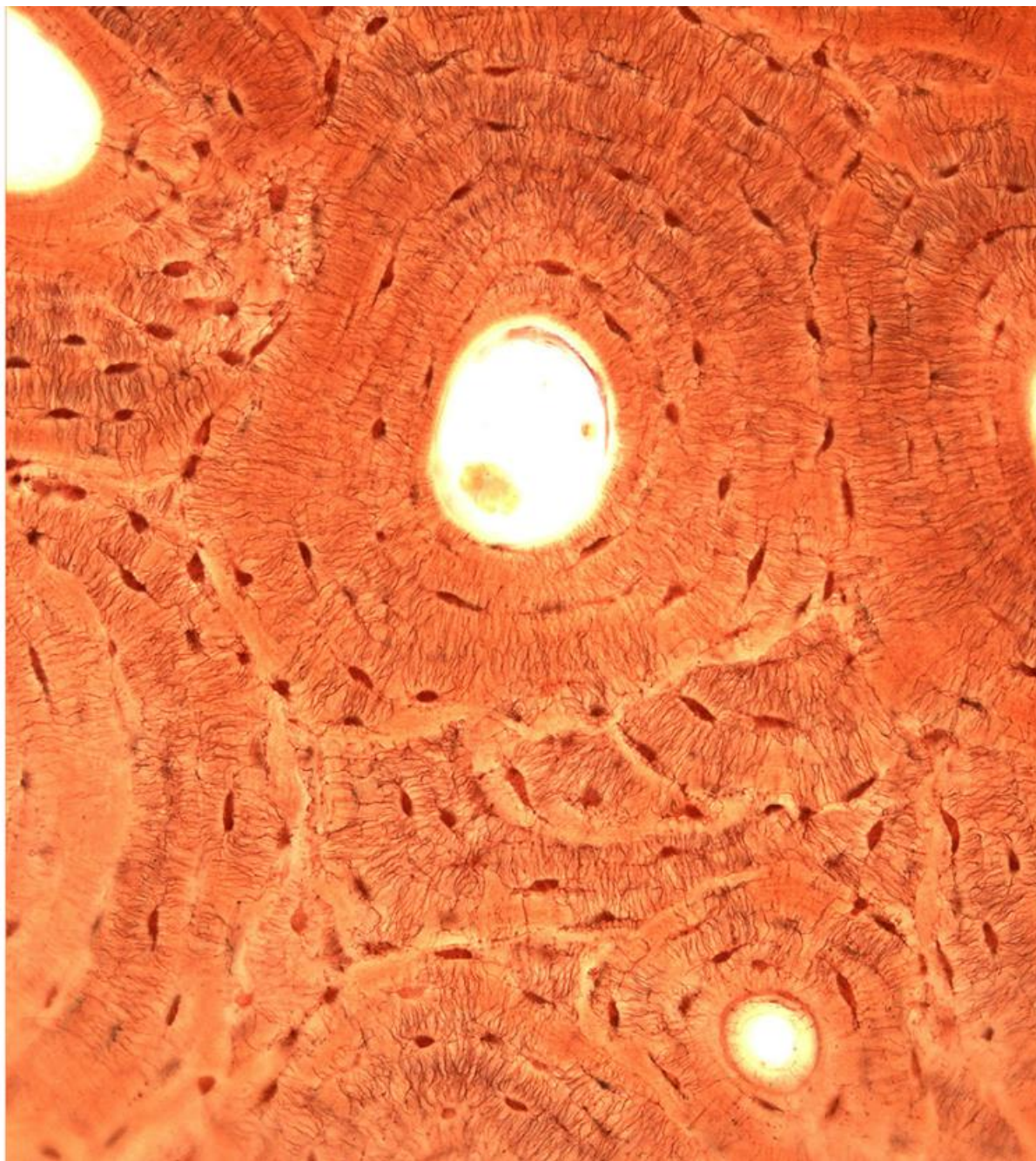
osteoclasts

osteocytes

Fibrillar bone



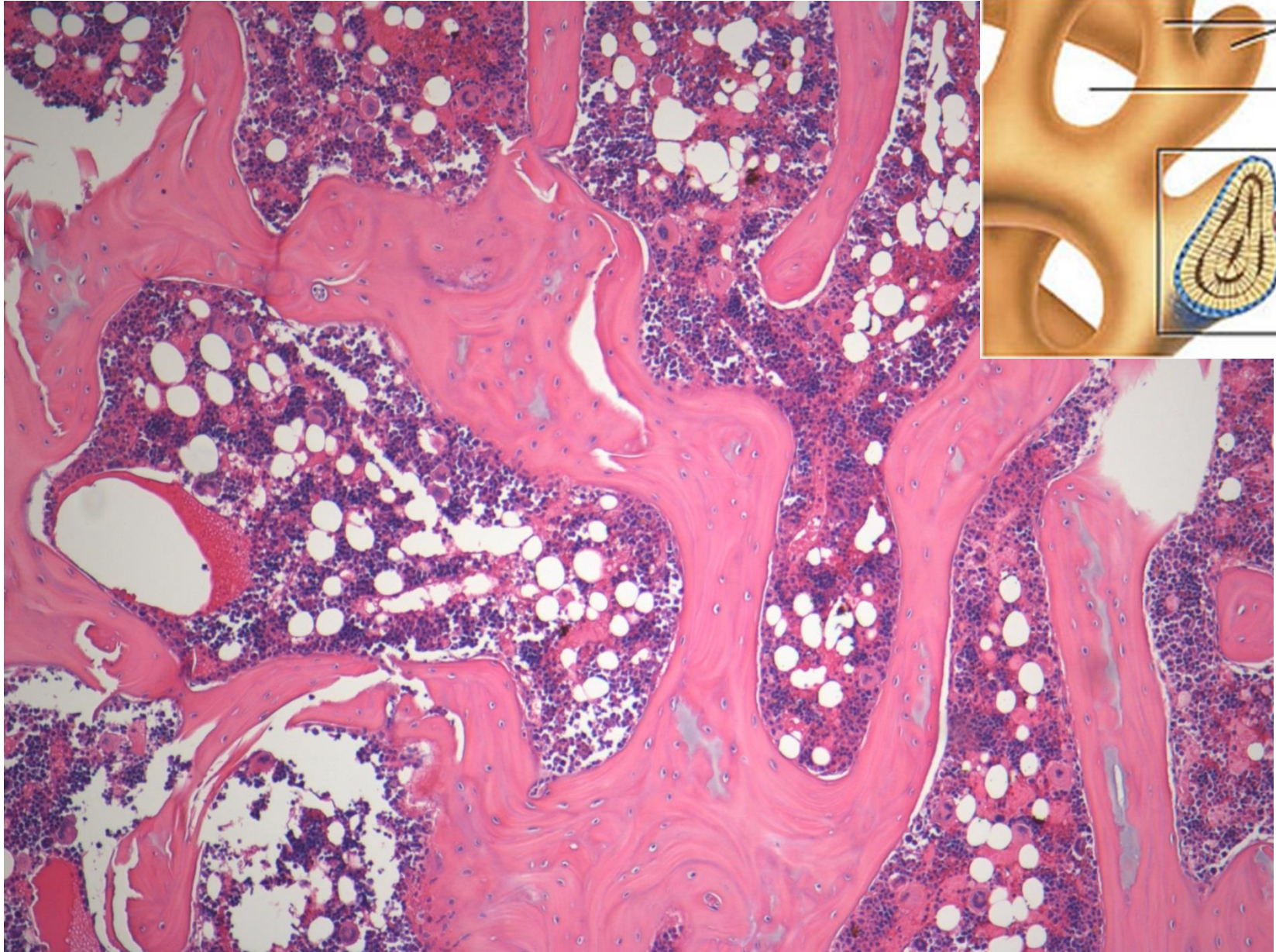
Lamellar compact bone (Schmorl)



<http://accessmedicine.mhmedical.com/>

20 μ m

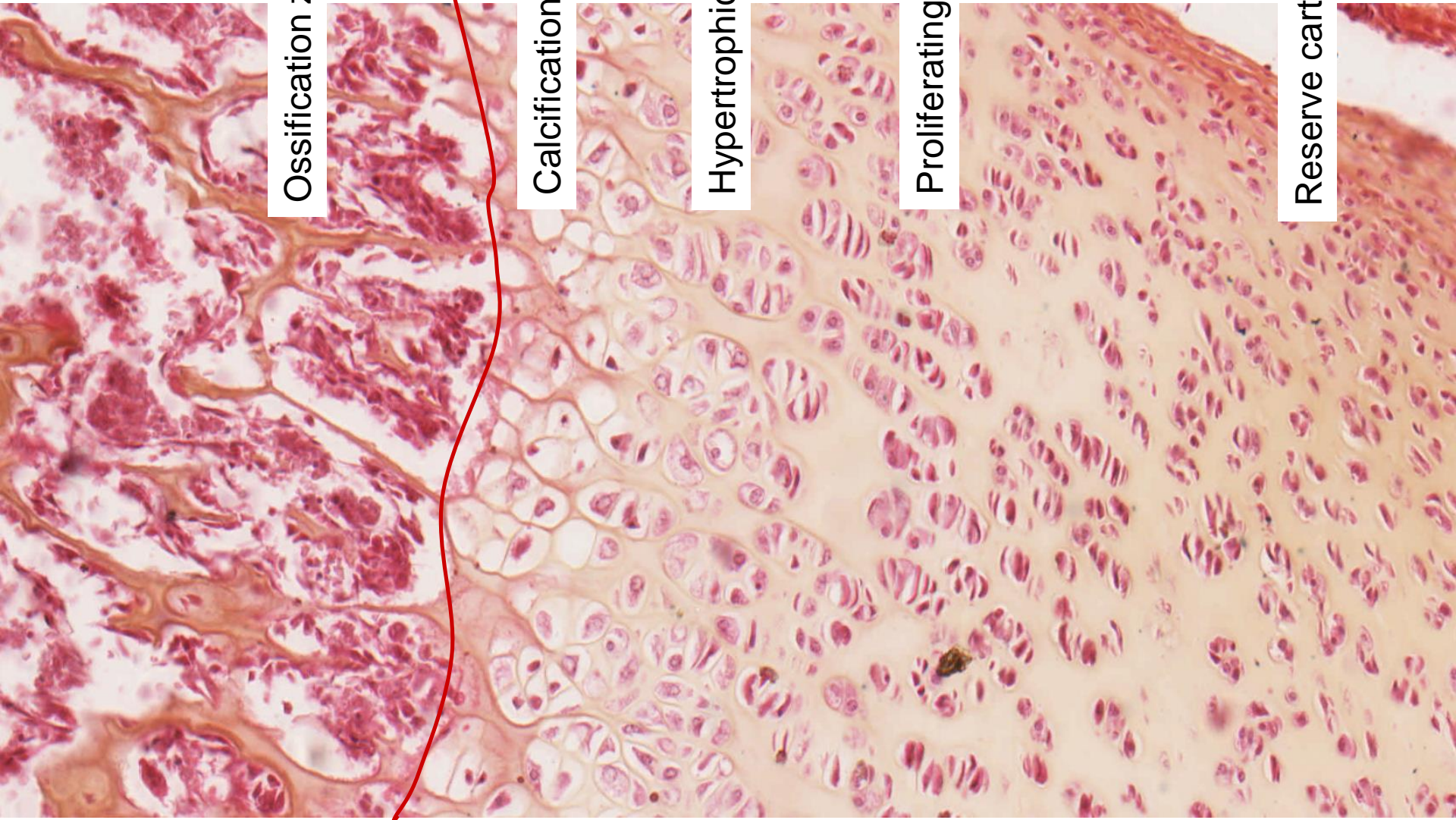
Lamellar sponge bone (HE)



studydroid.com

imgkid.com

Intracartilaginous ossification (HES)



Ossification zone

Erosion line

Calcification zone

Hypertrophic zone

Proliferating zone

Reserve cartilage

CONNECTIVE TISSUE - Cartilage and bone

Slides

Hyaline cartilage (27. Trachea)

Elastic cartilage (94. Auricula, 28. Elastic cartilage - orcein)

Lamellar bone (95. Bone – HE or Schmorl staining)

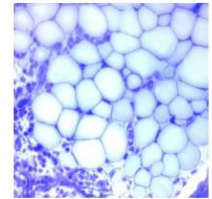
Endochondral ossification (96.)

Electronograms

Atlas of Cytology and Embryology

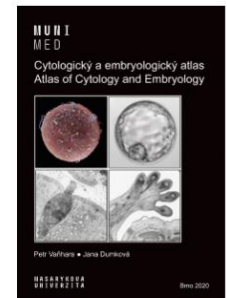
Histologický atlas

Doporučený studijní materiál



Cytologický a embryologický atlas

Doporučený studijní materiál



Numbers by the slides indicate their positions in sets in Microscopic Hall, not in online atlases. These numbers allow you to find the slides easily and study them using a microscope when the normal classes are opened.