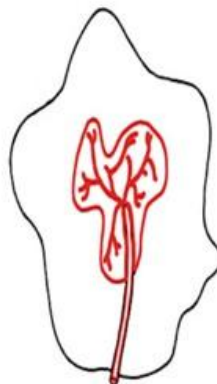
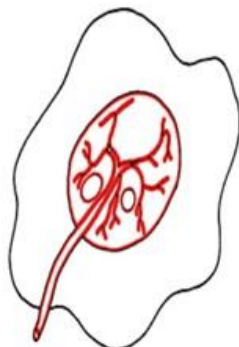
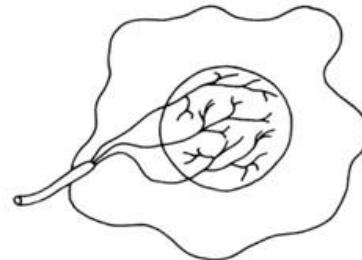
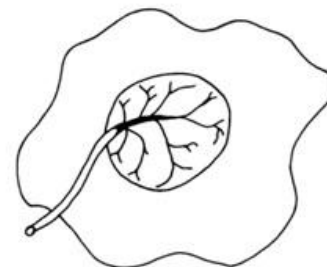
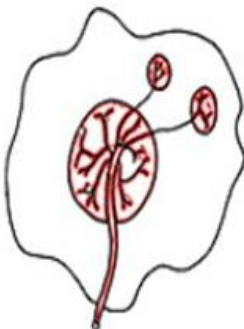


ANOMÁLIE PUPEČNÍ ŠŤŮRY (pupečníku)



3

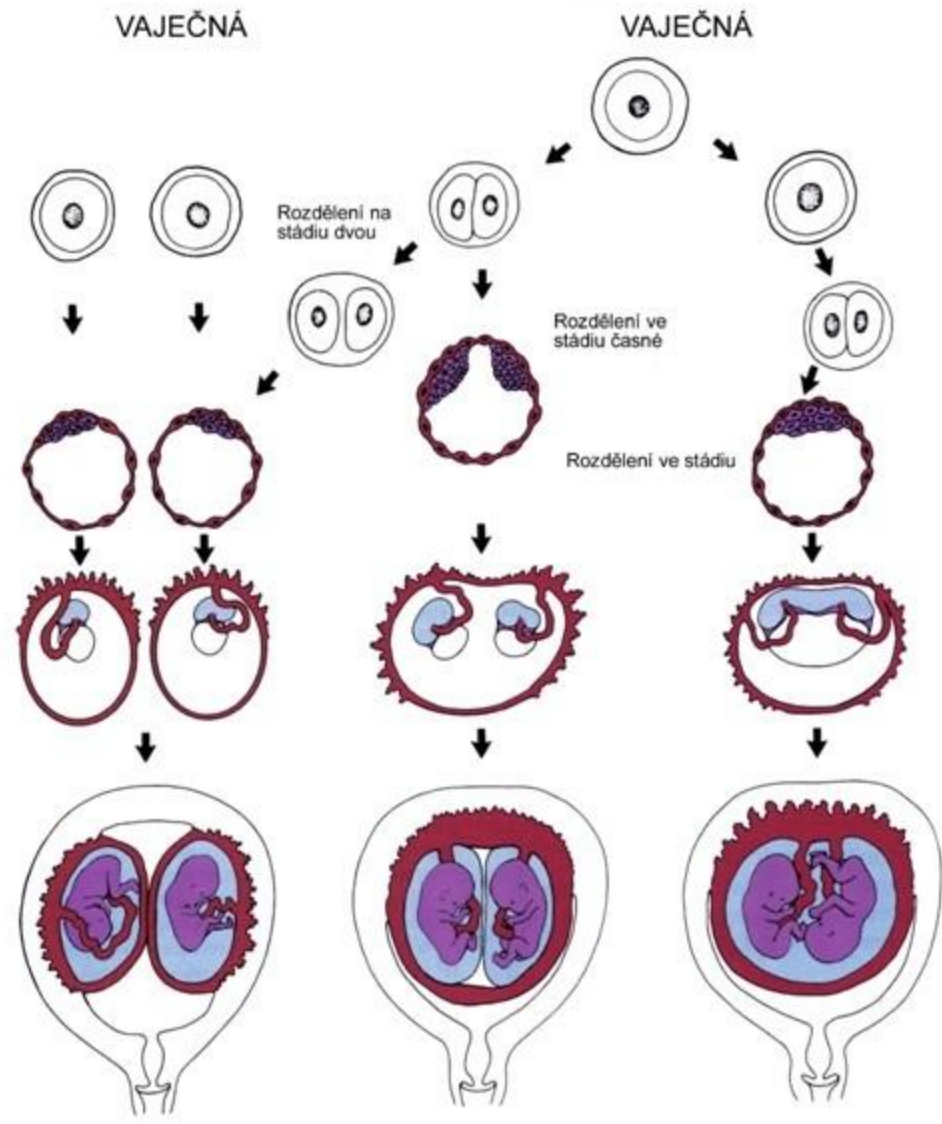
Postranní



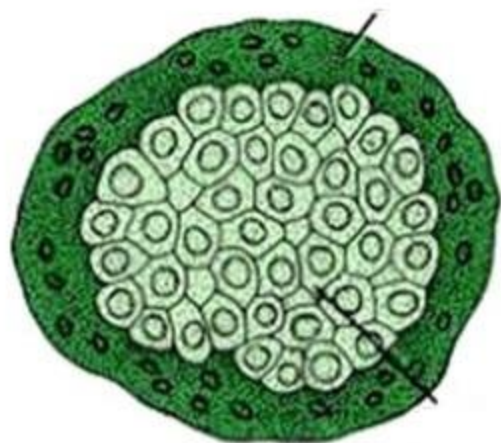
4

Středová

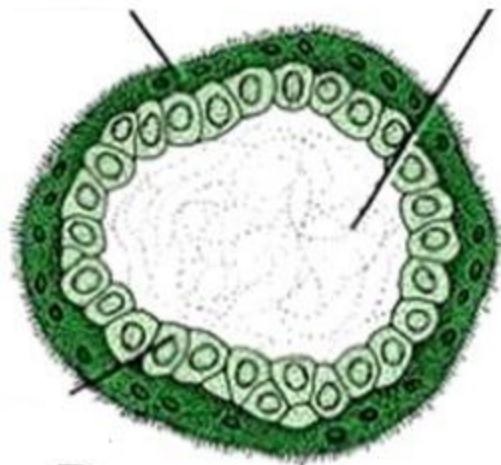
DVOJČATA



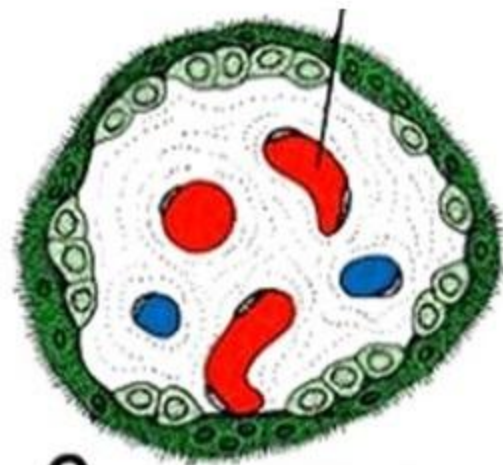
Vývoj choriových klků



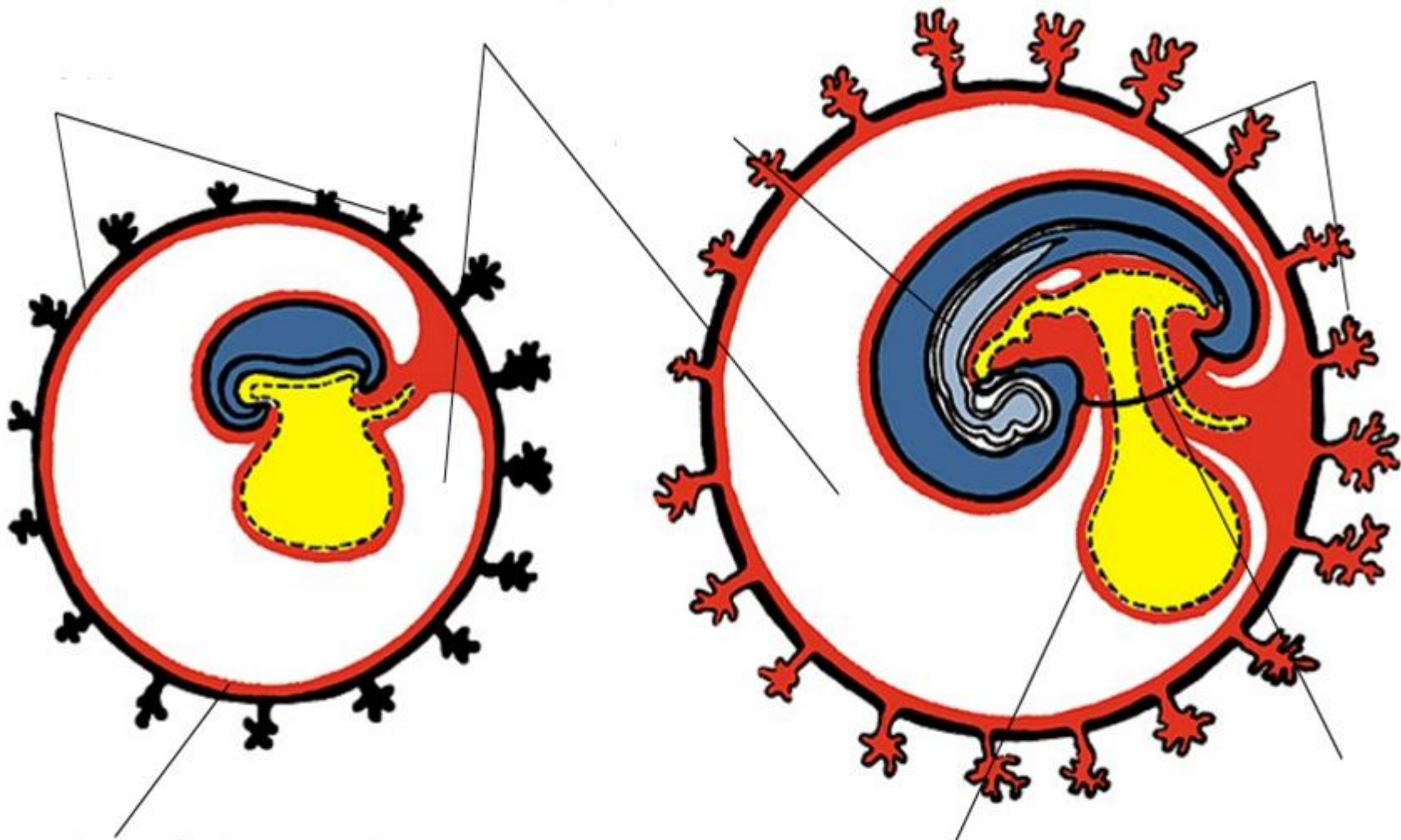
A



B



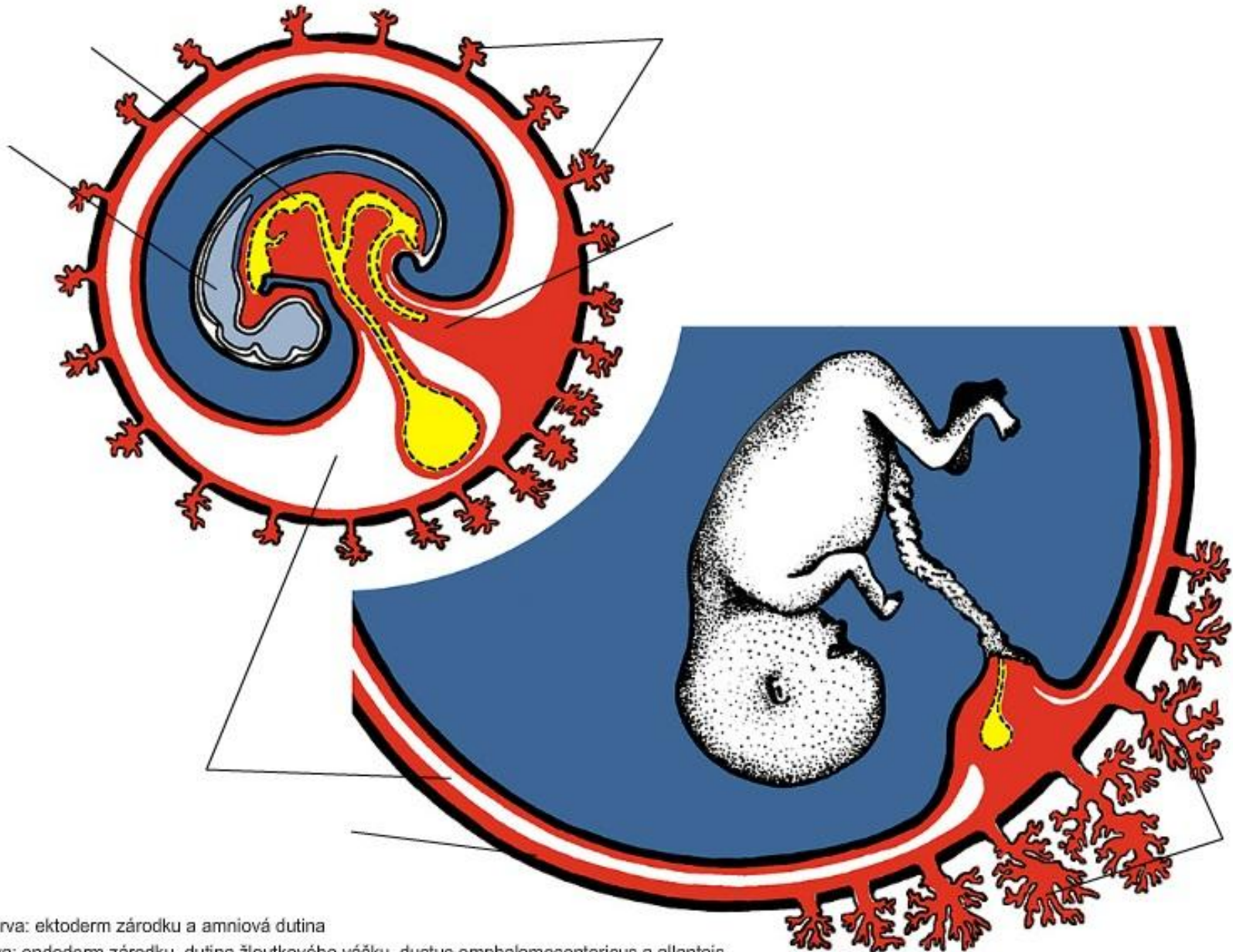
C



modrá barva: ektoderm zárodku a amniová dutina

žlutá barva: endoderm zárodku, dutina žloutkového váčku, ductus omphalomesentericus a allantois

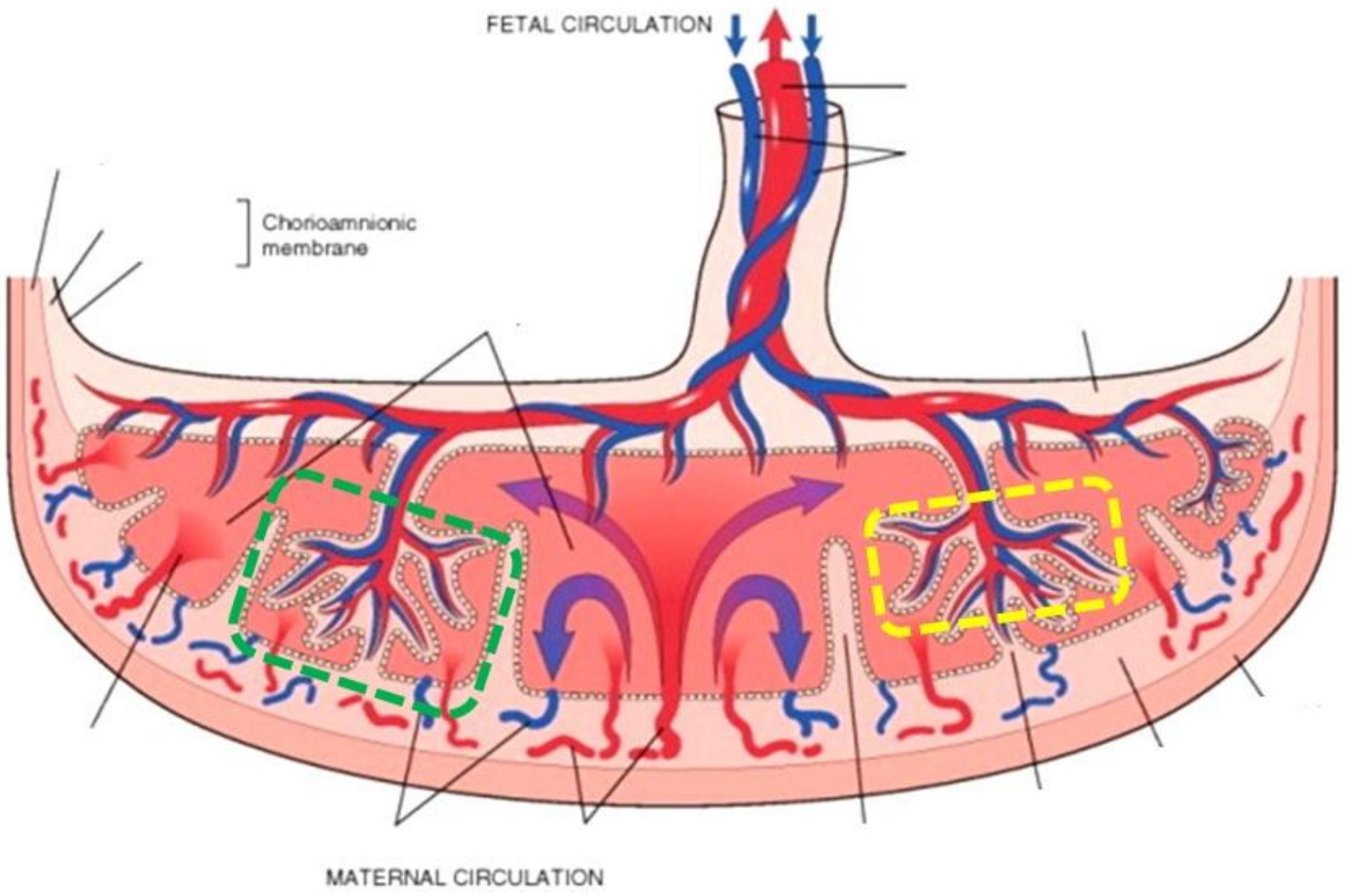
červená barva: extraembryonální mezoderm



modrá barva: ektoderm zárodku a amniová dutina

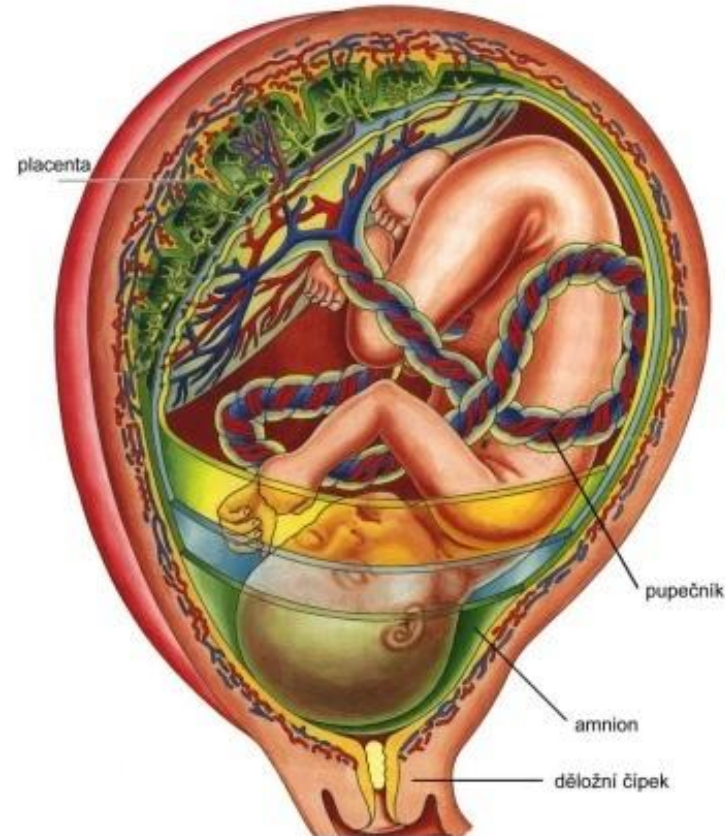
žlutá barva: endoderm zárodku, dutina žoutkového vāčku, ductus omphalomesentericus a allantois

červenā barva: extraembryonālνı mezoderm



Fyziologické uložení plodu v děloze

- **POLOHA**
- **POSTAVENÍ**
- **DRŽENÍ**
- **NALÉHÁNÍ**



**Hasseho pravidlo: od 3. l.m.=
od 6. l.m.=**