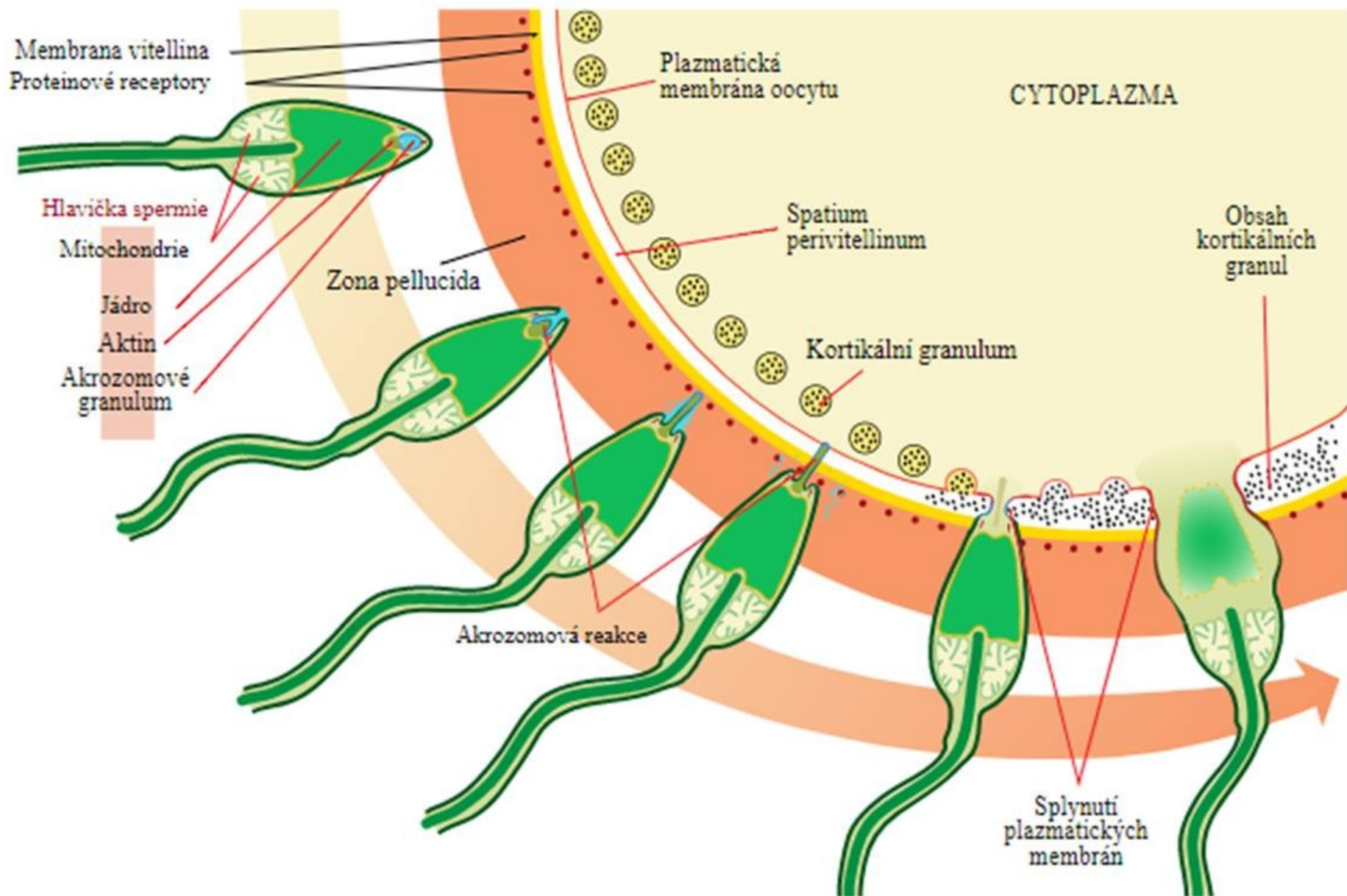
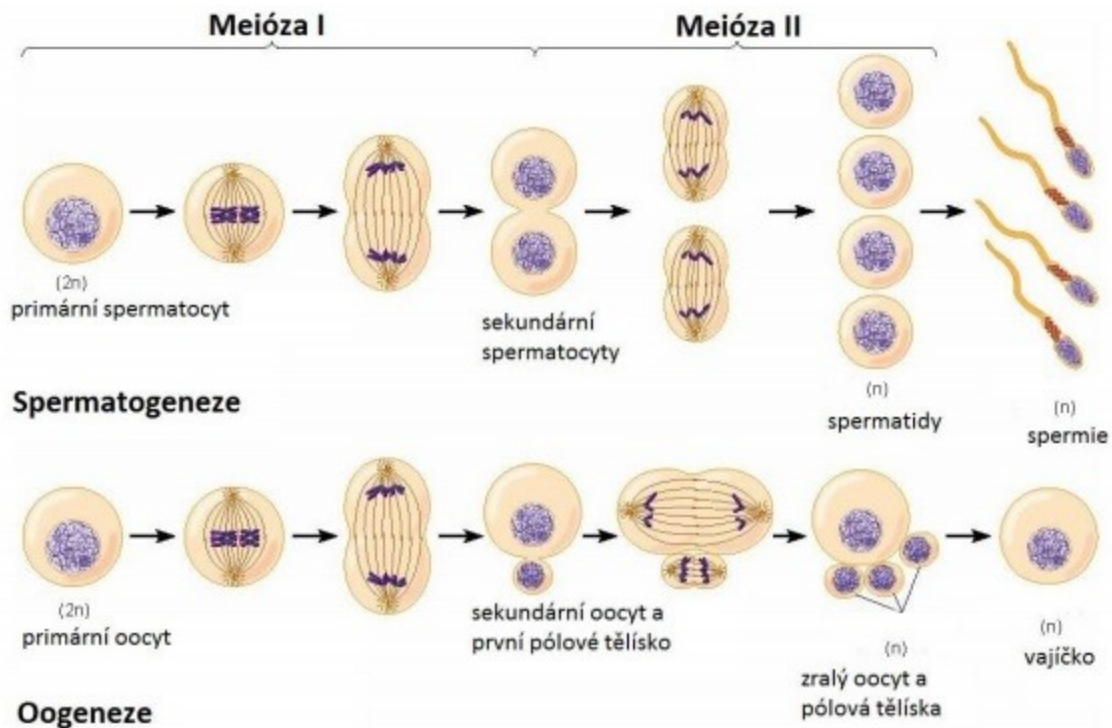
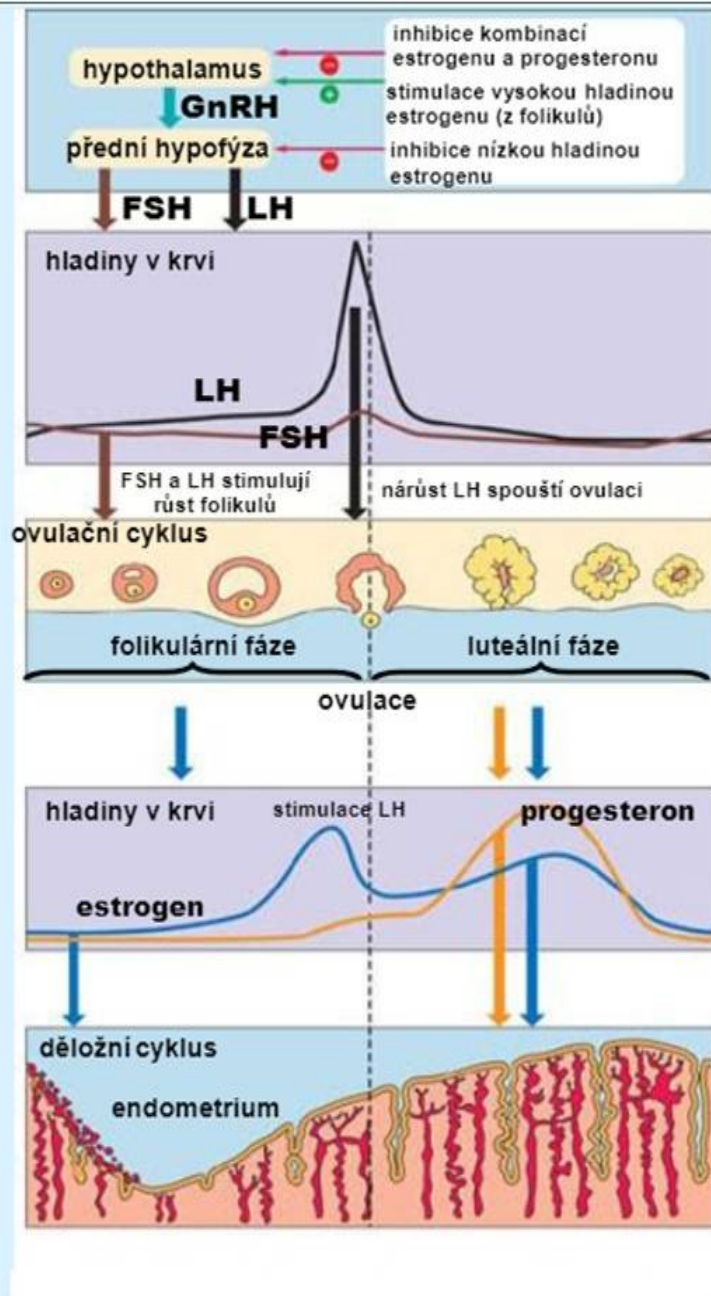
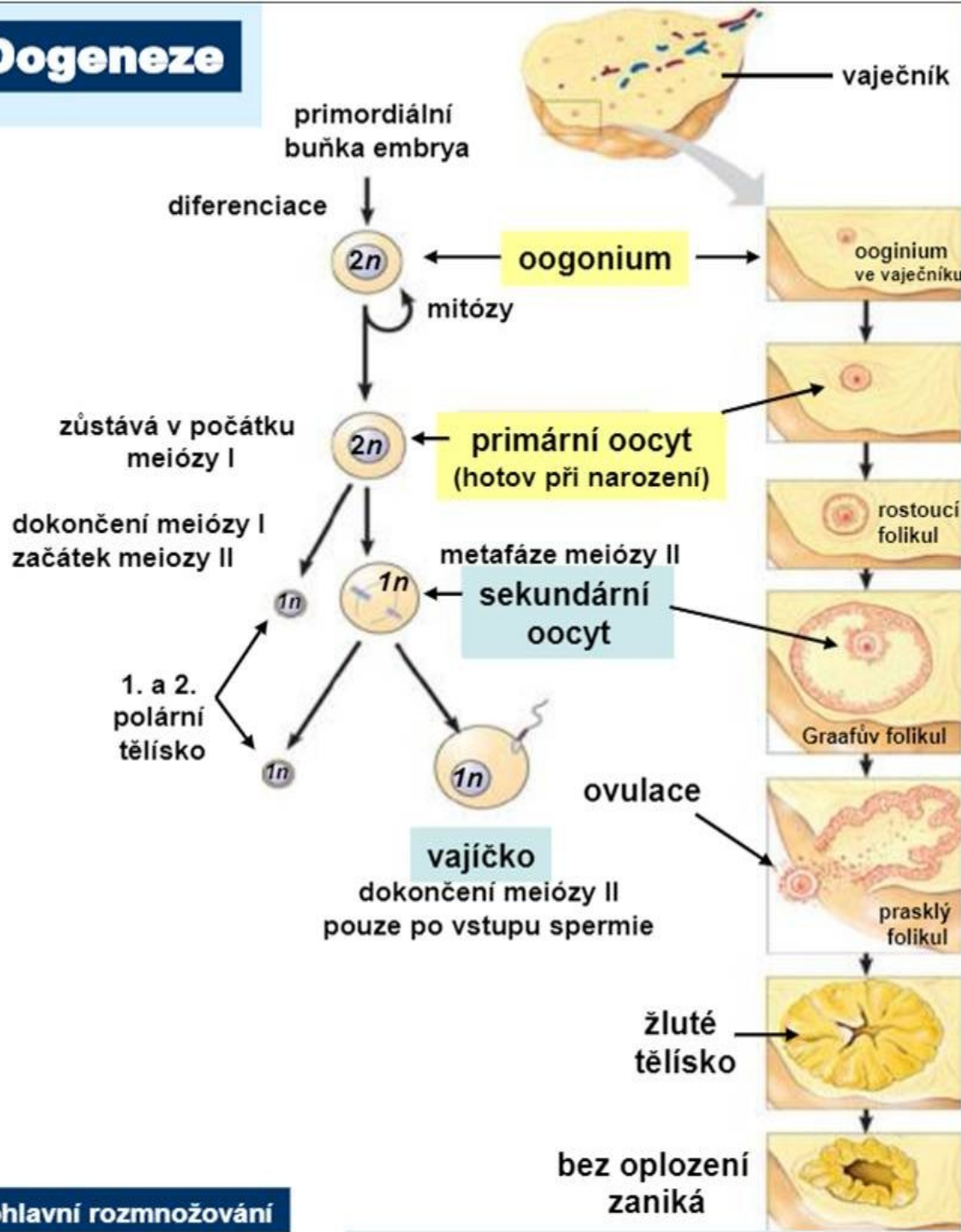


Akrozomová a kortikální reakce



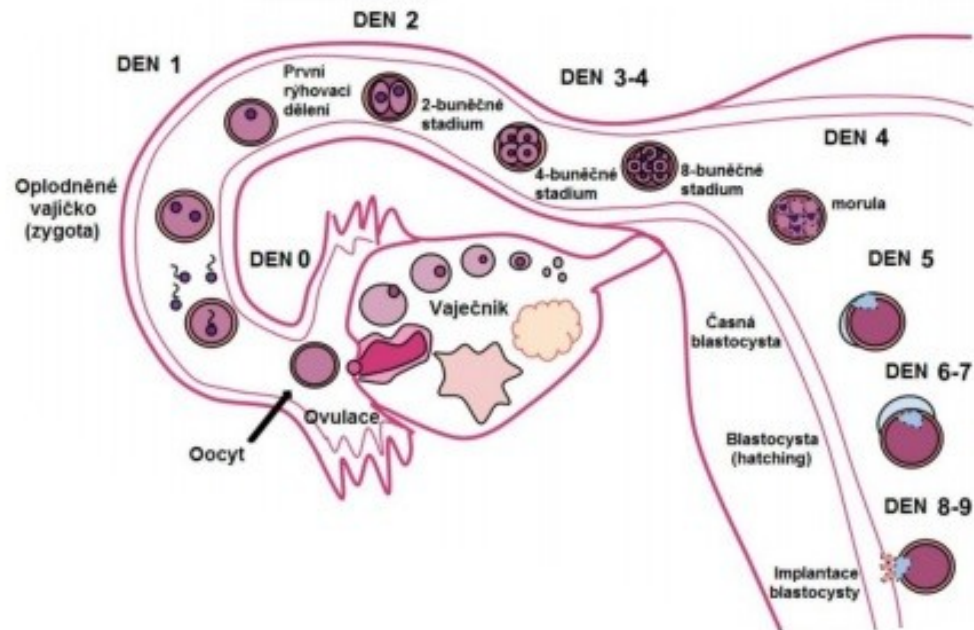


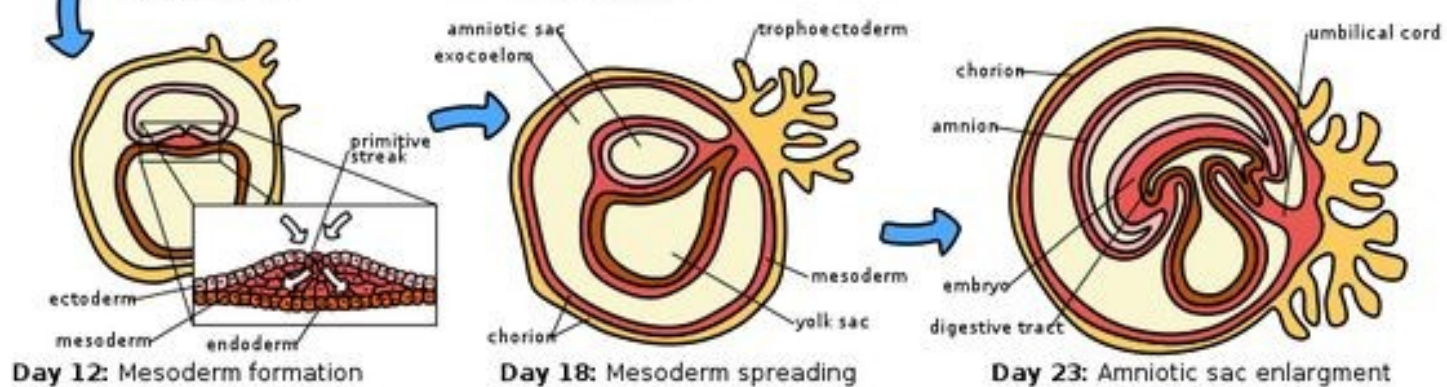
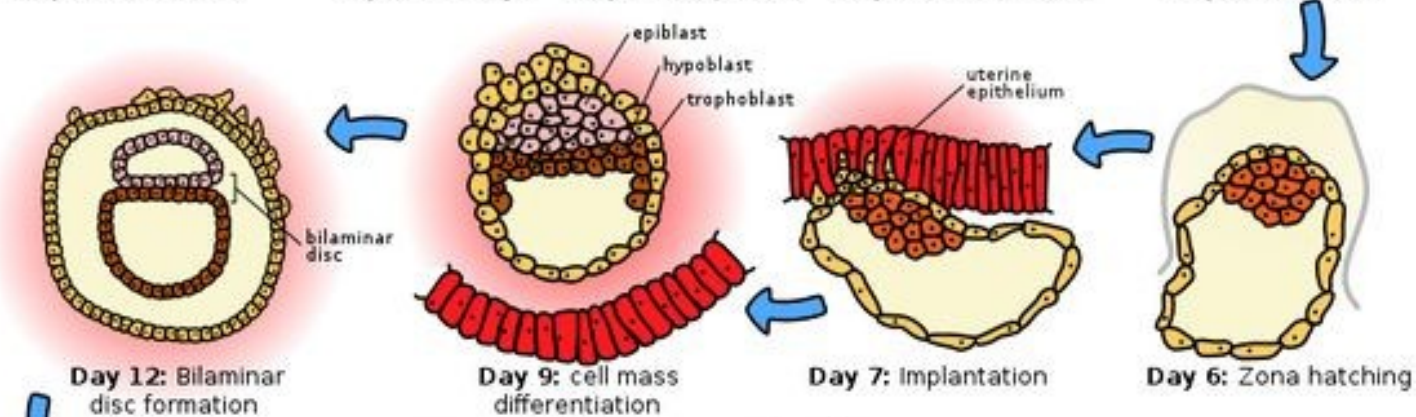
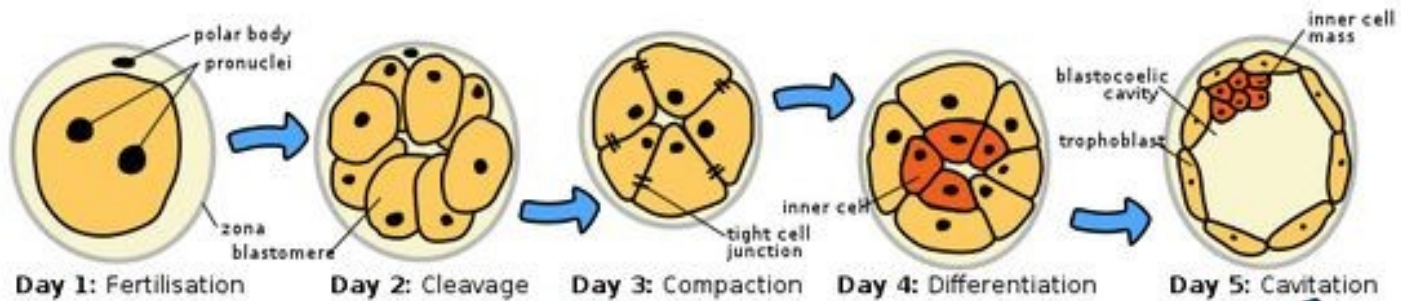
Oogeneze



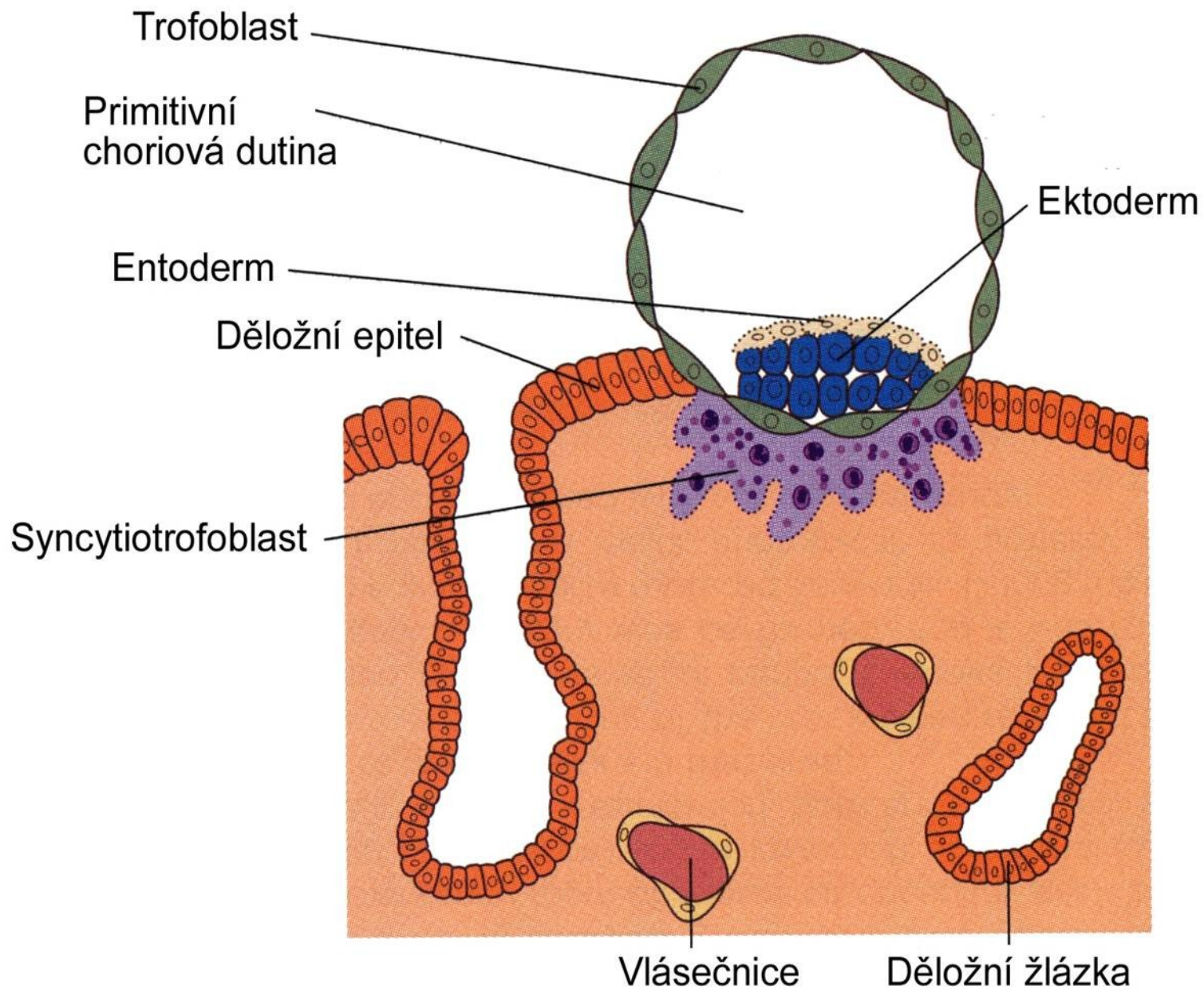
(po oplození roli LH v e stimulaci žlutého tělíska přebírá choriogonadotropin plodu)

Časný vývoj embra (od ovulace k implantaci)

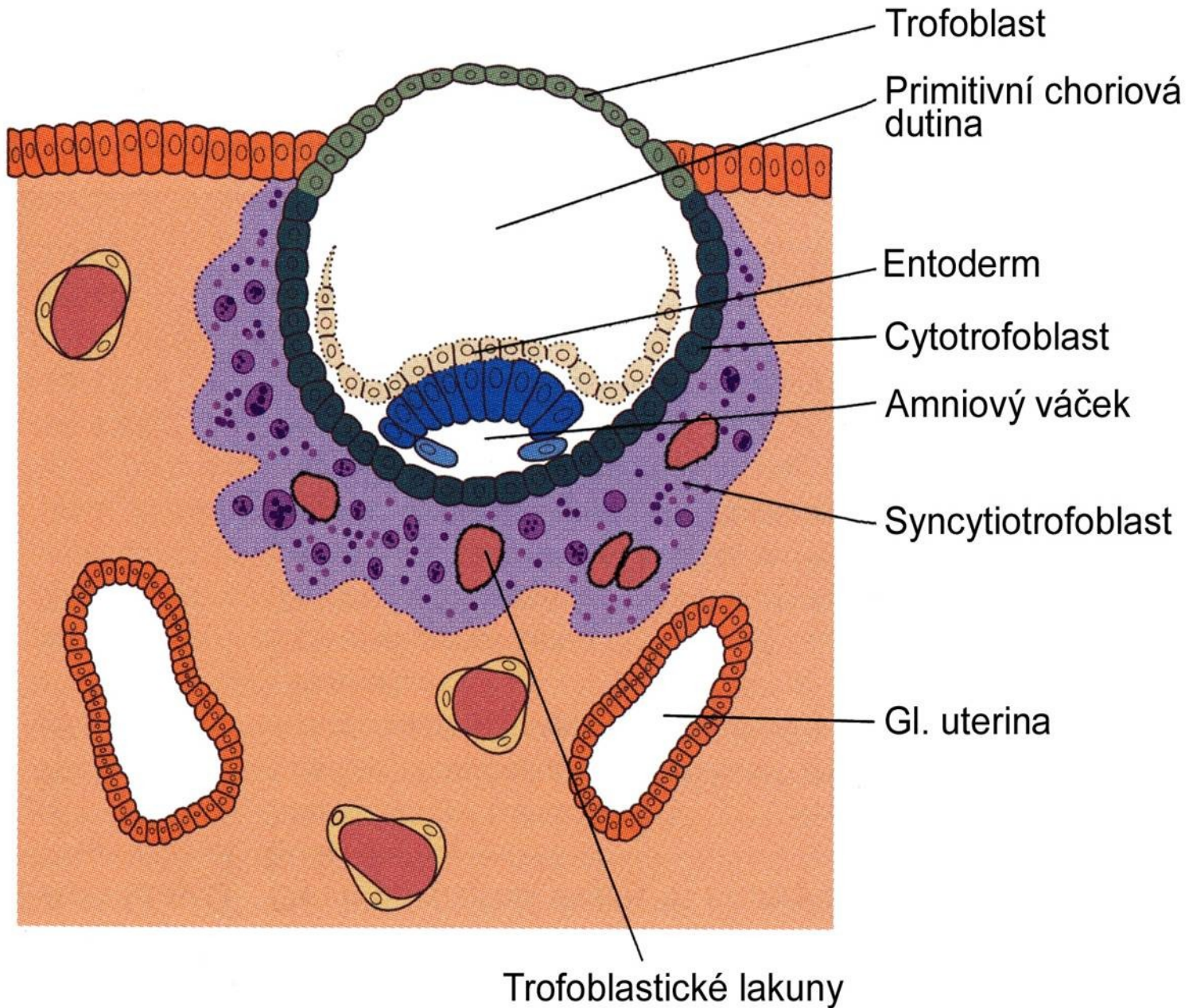




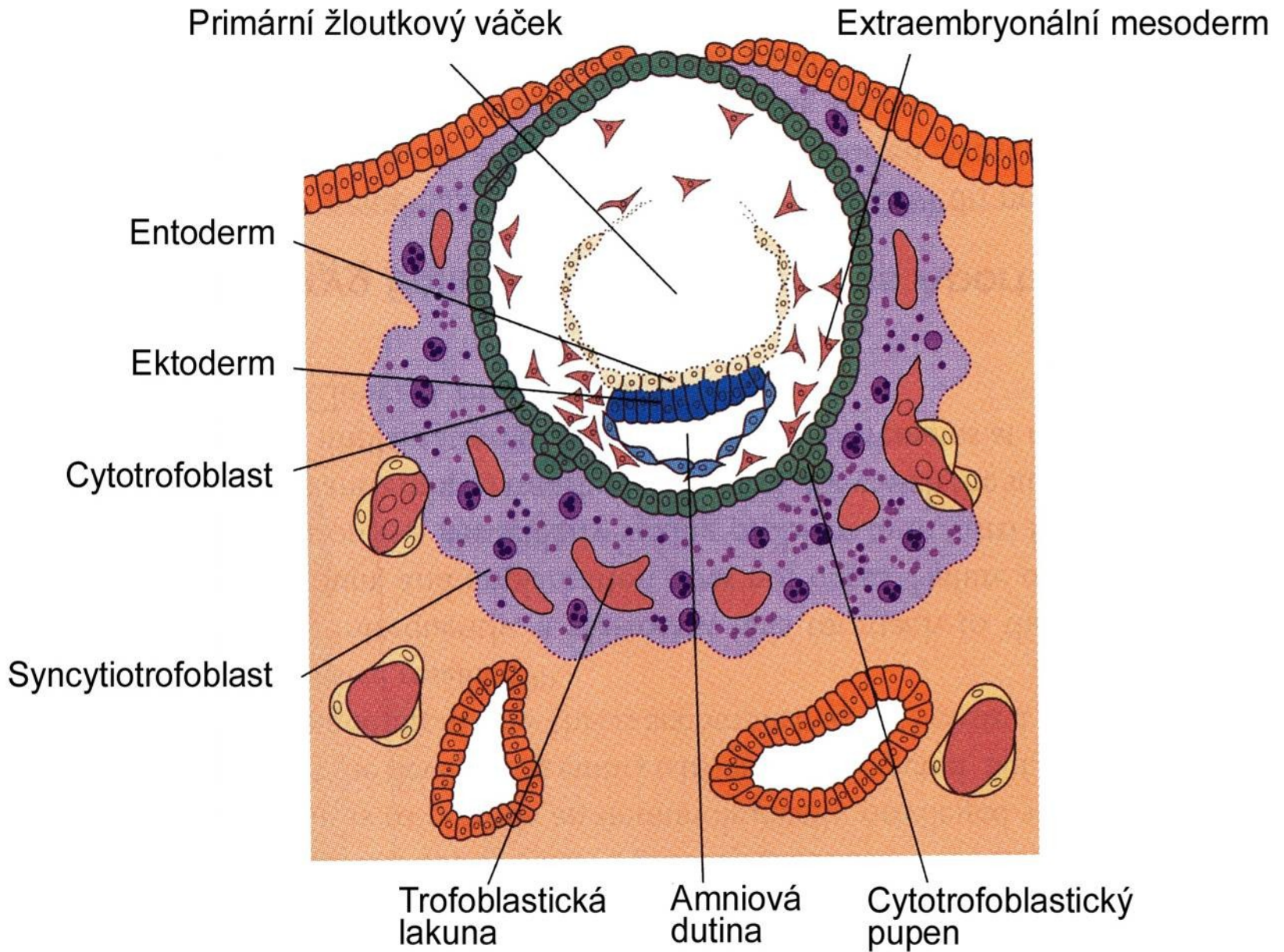
IMPLANTACE - začátek 7. dne



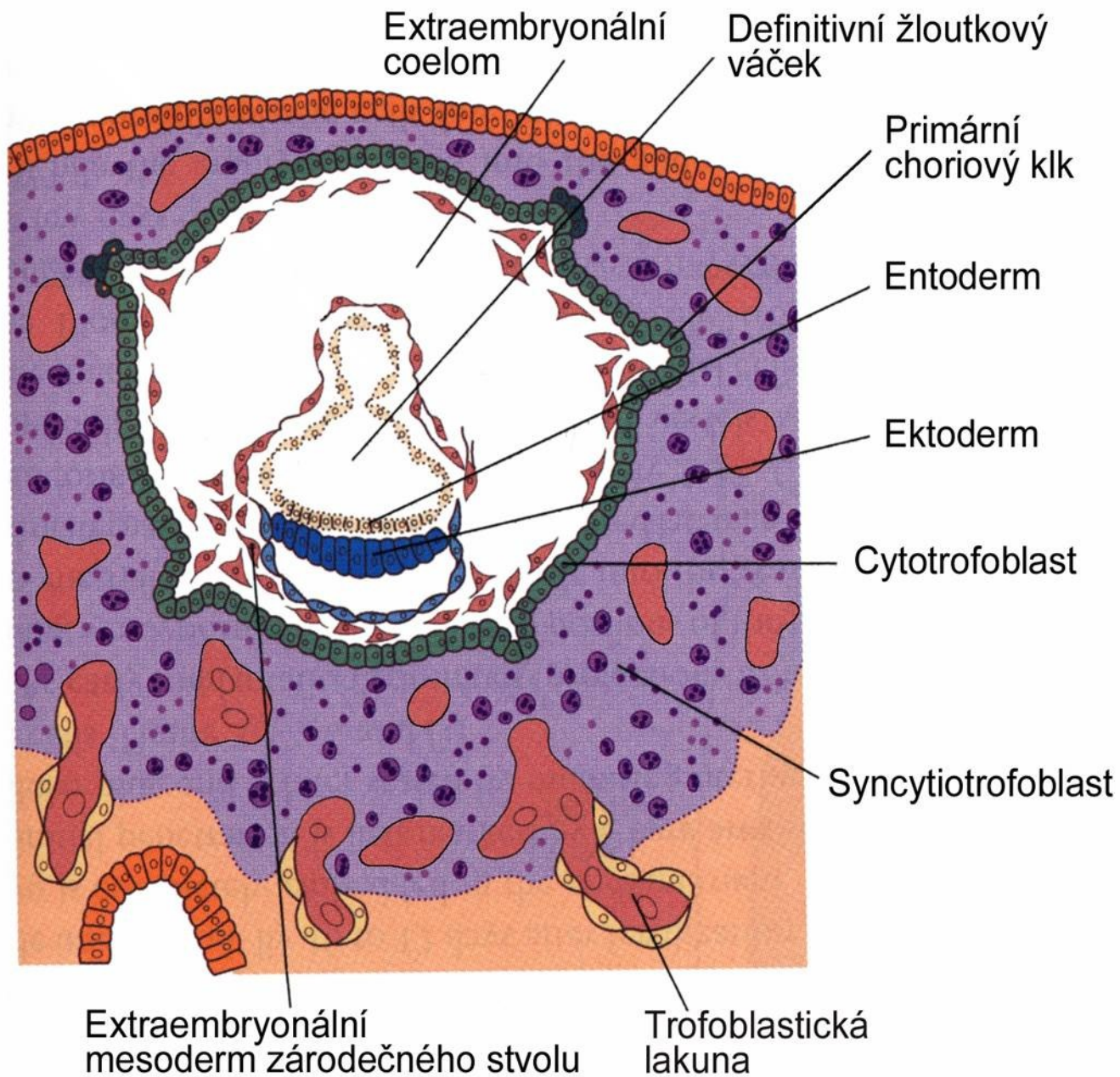
IMPLANTACE - 8 1/2 dne

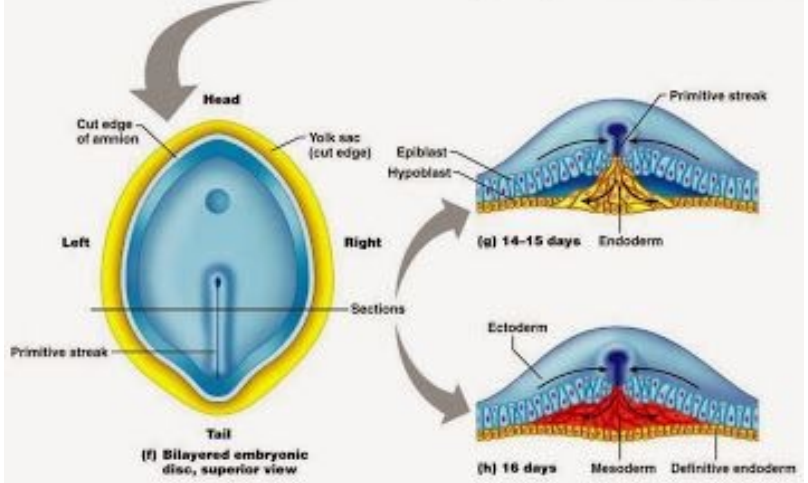
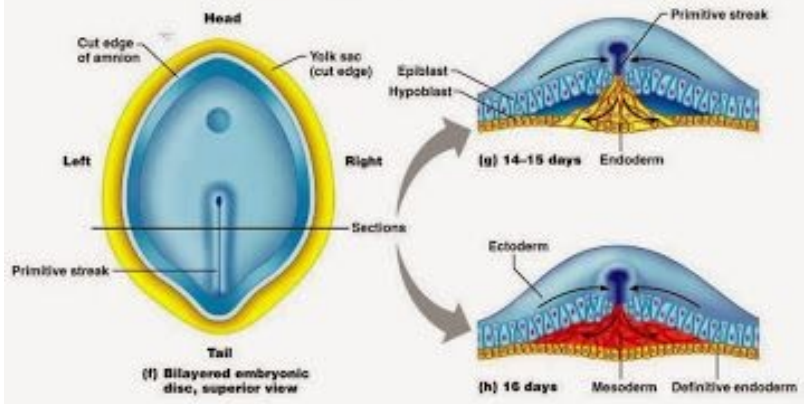
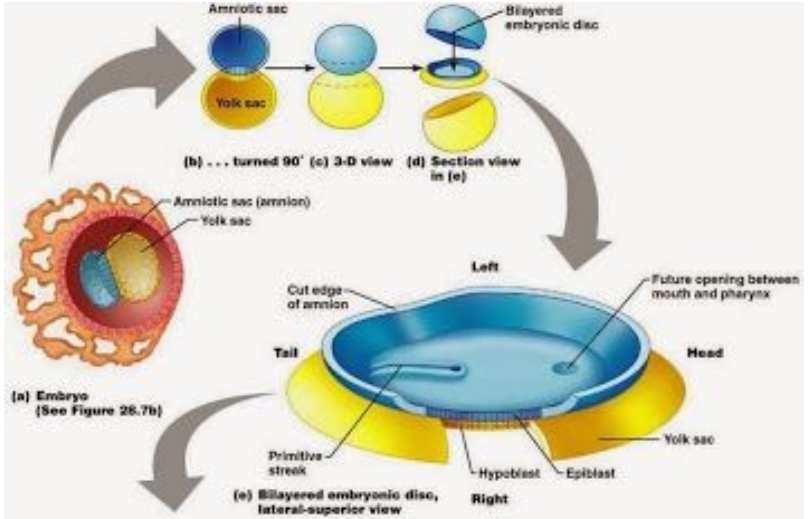


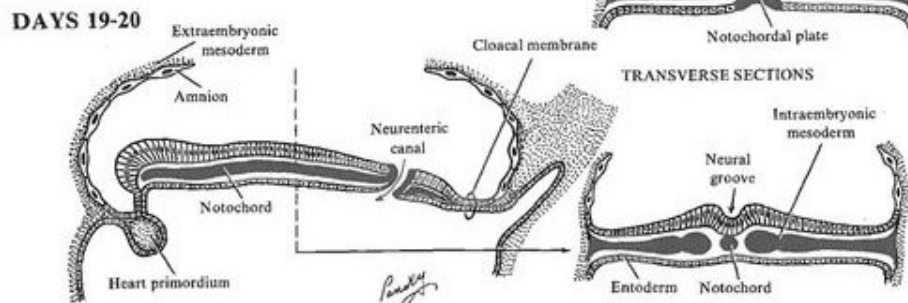
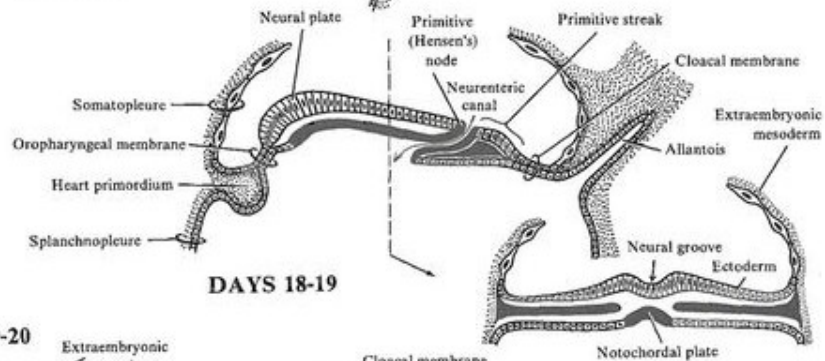
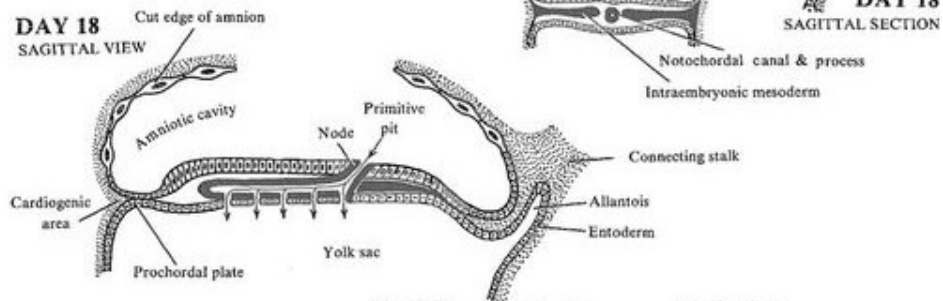
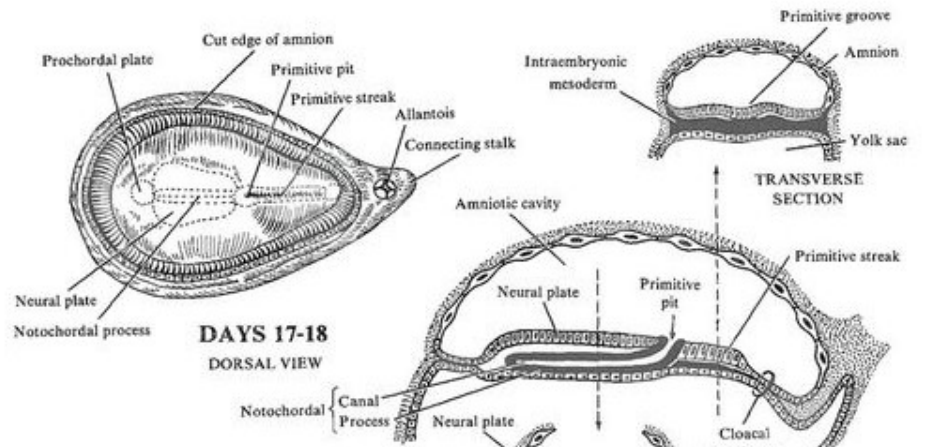
IMPLANTACE - 10. den

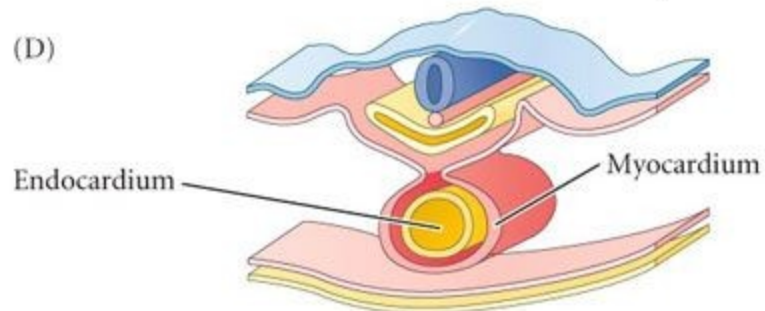
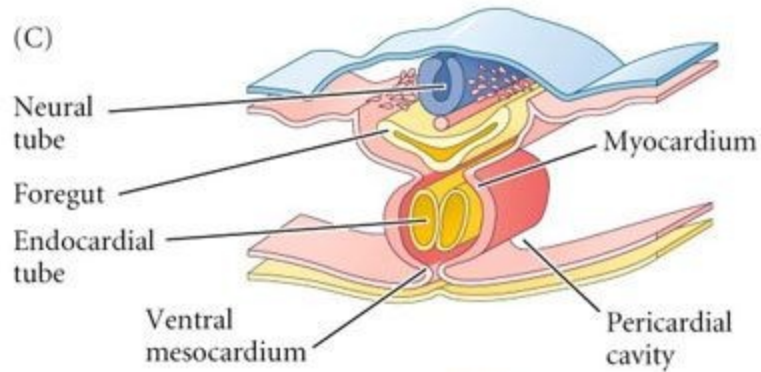
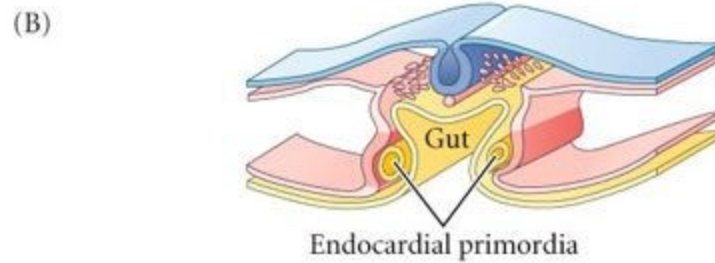
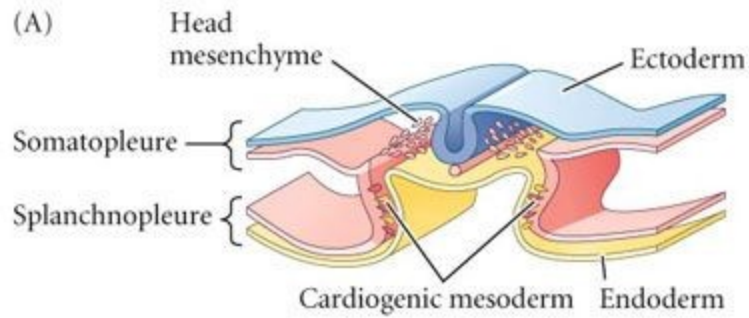


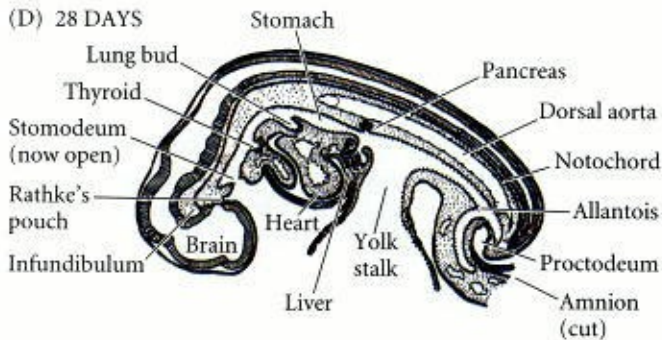
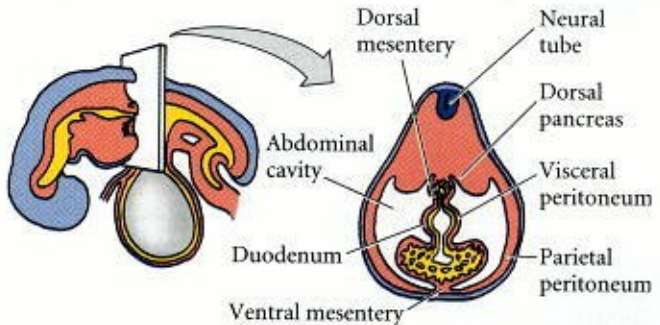
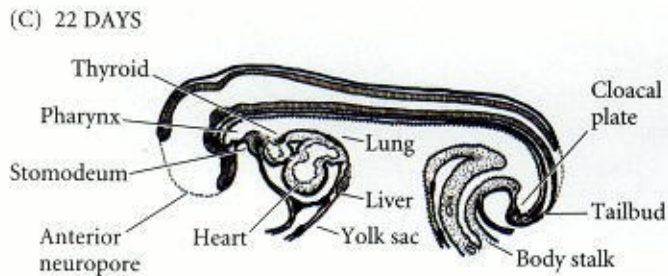
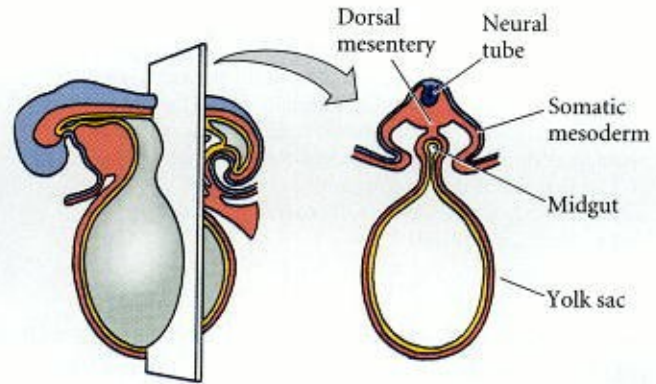
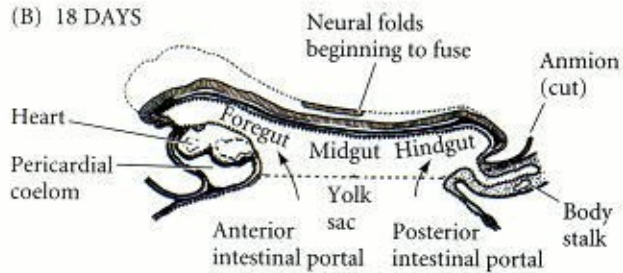
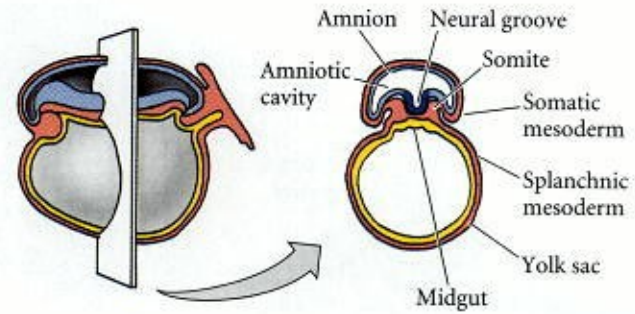
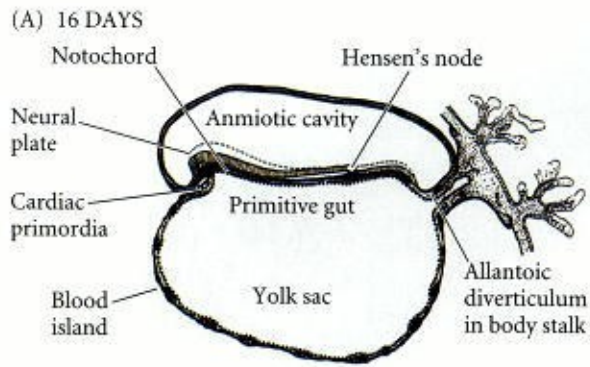
IMPLANTACE - 13. den

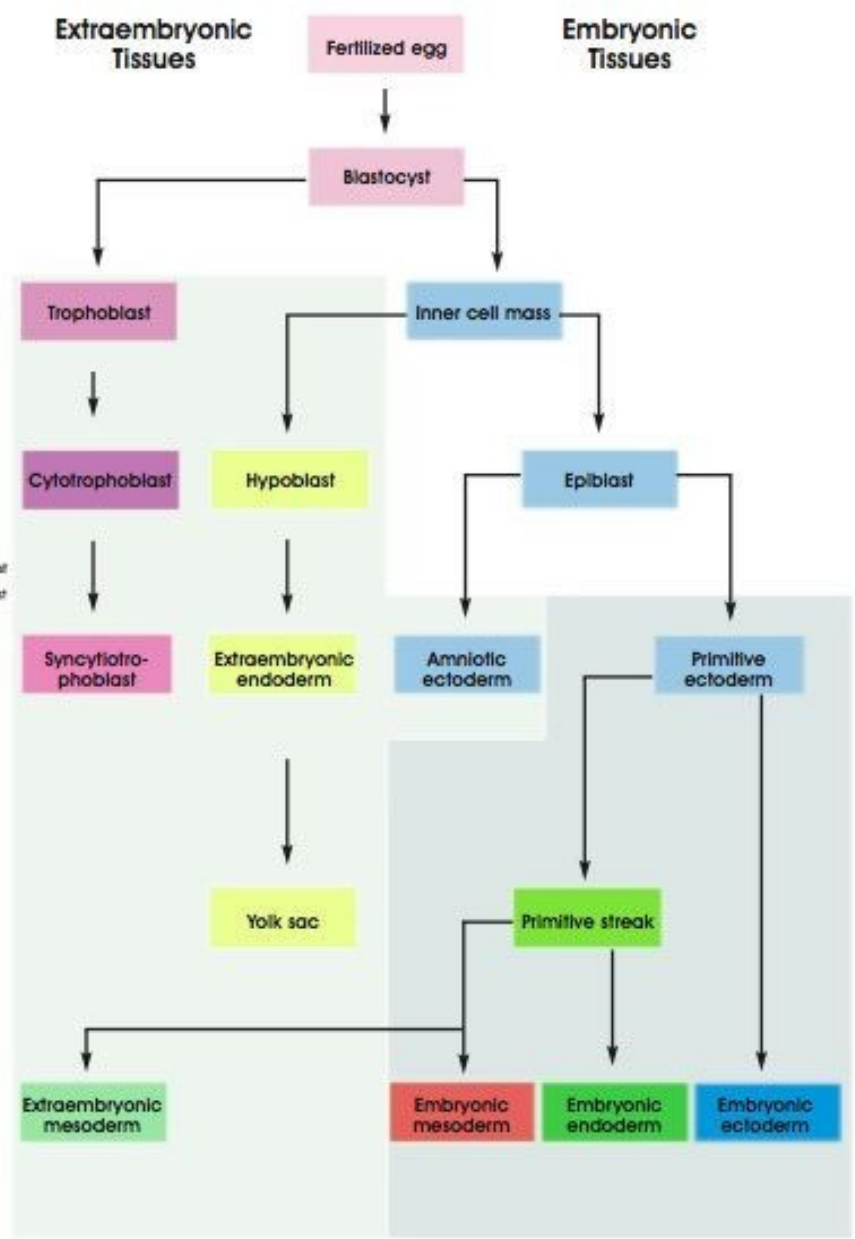
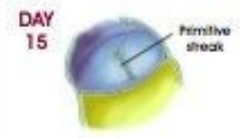
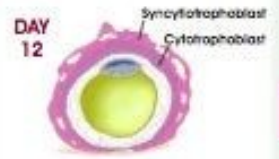












Vznik orgánů a tkáně ze zárodečných listů obratlovce

EKTODERM

- Epidermis kůže a její deriváty (např. kožní žlázy, nehty)
- Epiteliální výstelka úst a konečníku
- Smyslové receptory v pokožce
- Rohovka a čočka
- Nervový systém
- Dřeň nadledvinek
- Zubní sklovina
- Epitel epifýzy a hypofýzy

MEZODERM

- Chorda
- Kosterní systém
- Svalový systém
- Oběhový systém a lymfatický systém
- Reprodukční systém (kromě zárodečných buněk)
- Škára kůže
- Výstelka tělní dutiny
- Kůra nadledvinek

ENDODERM

- Epiteliální výstelka trávicího traktu
- Epiteliální výstelka dýchacího ústrojí
- Sliznice močové trubice, močového měchýře a pohlavního systému
- Játra
- Slinivka
- Brzlík
- Štítná žláza a příštítná tělíska