

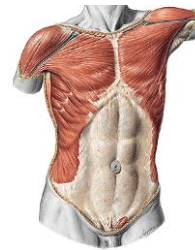
CLINICAL ANATOMY OF THE ABDOMEN

MUDr. Marek Joukal, Ph.D.

Department of Anatomy



Morphology of the abdominal wall



Above the linea semilunaris (upper 2/3)

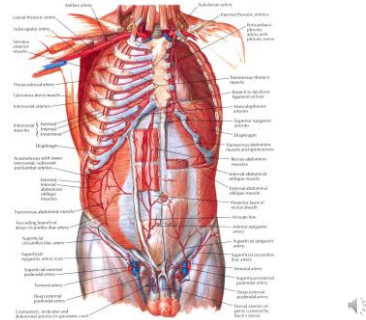


Under the linea semilunaris (lower 1/3)



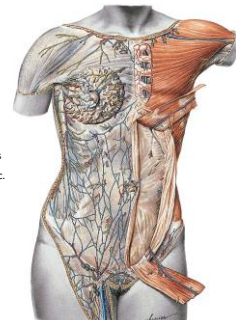
Arteries of the abdominal wall

- aa. intercostales
- a. epigastrica spf.
- a. circumflexa ilium spf.
- a. epigastrica sup.
- a. epigastrica inf.

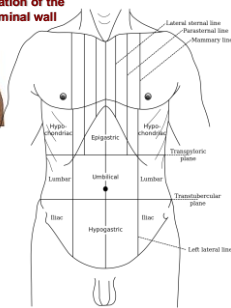
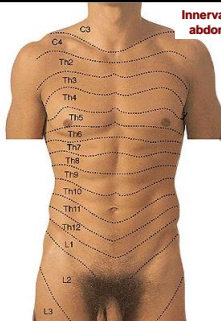


Veins of the abdominal wall

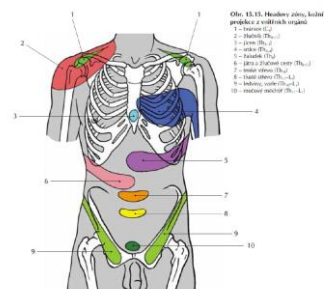
- v. thoracica lateralis
- v. thoracoepigastrica
- vv. paraumbilicales
- v. epigastrica superficialis
- v. circumflexa ilium spf.
- Cavo-caval anastomoses
- Porto-caval anastomoses



Innervation of the abdominal wall



Head's zones

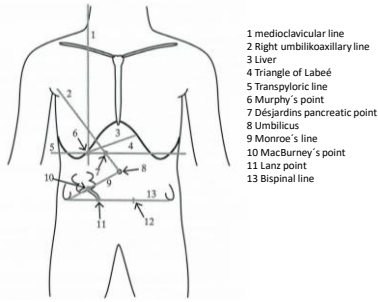


- Obl. 13.15. Headly zóny, lokalizace orgánů a ústřední orgány
- 1 - Hlava (H)
 - 2 - prava (Pr.)
 - 3 - levá (L)
 - 4 - levá (L)
 - 5 - levá (L)
 - 6 - levá (L)
 - 7 - levá (L)
 - 8 - levá (L)
 - 9 - levá (L)
 - 10 - levá (L)

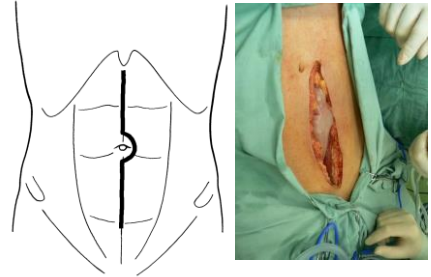
Hájek, Elišková: Přehled anatomie, Galén-Karolinum, 2. vydání, 2009



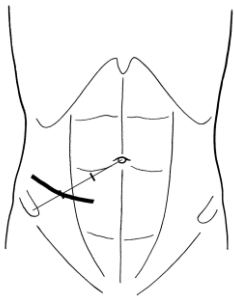
Projection of the organs



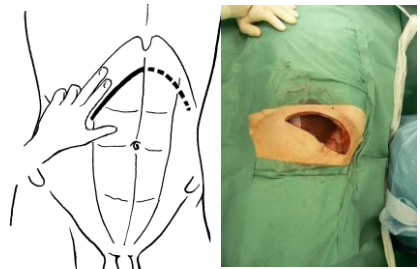
Middle laparotomy and para-rectal incision



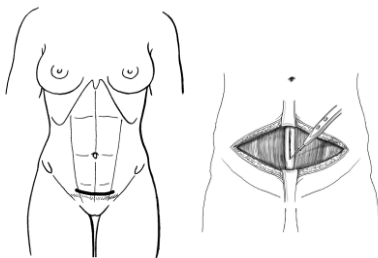
McBurney's incision



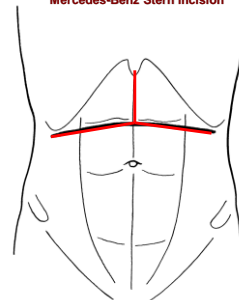
Subcostal incision

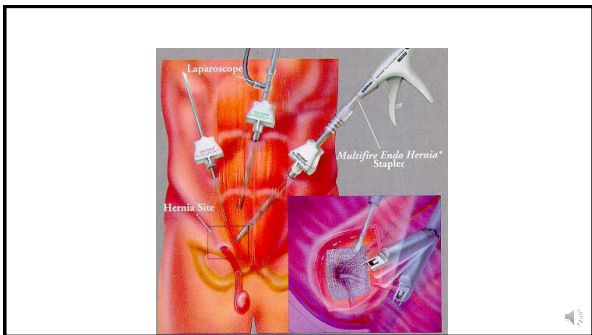
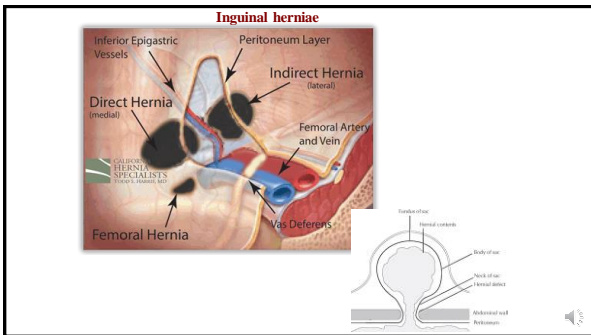
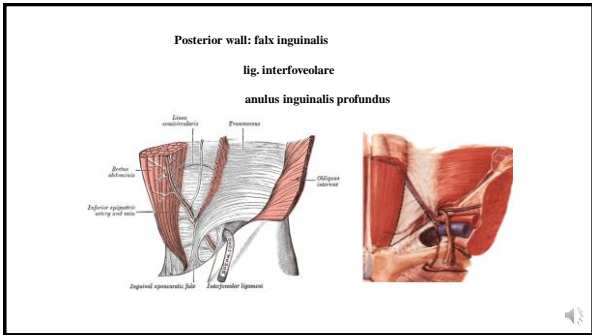
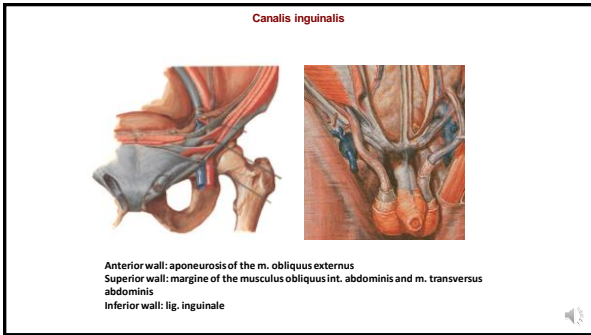
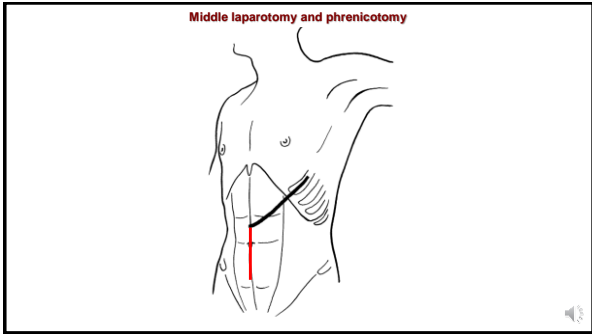
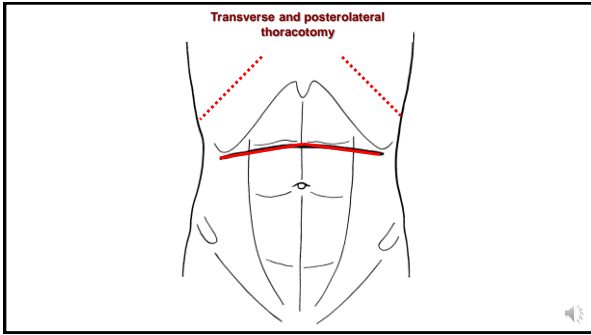


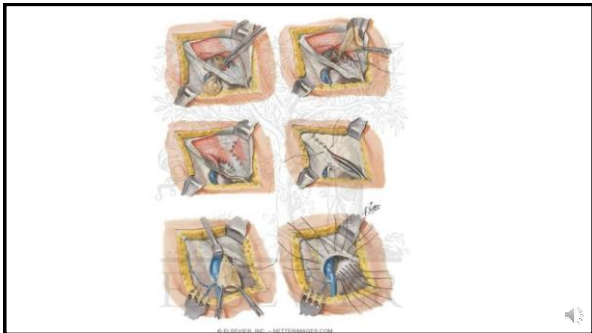
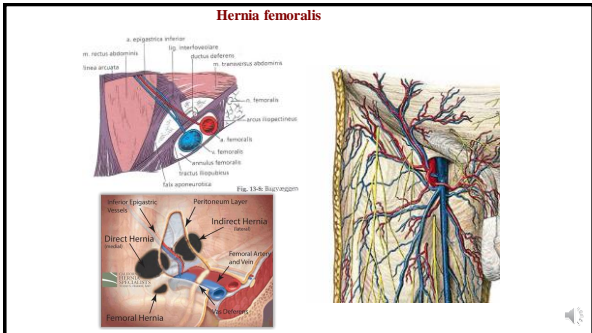
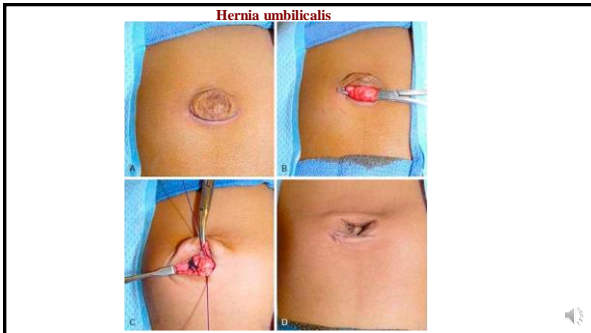
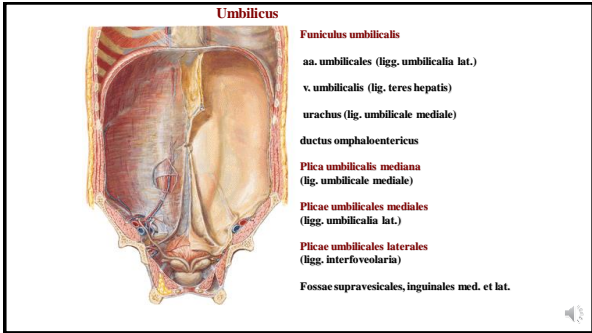
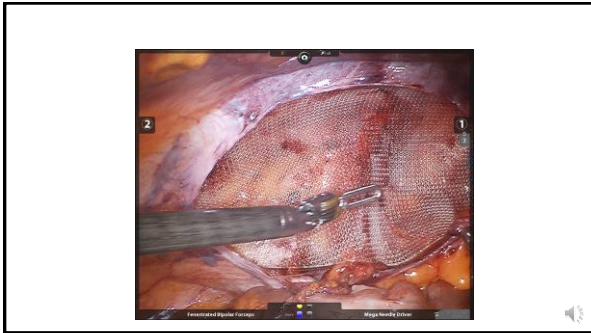
Phannestiel's incision



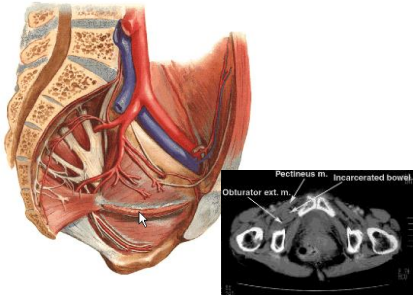
Mercedes-Benz Stern incision







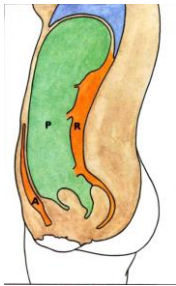
Hernia obturatoria



Hernia in the scar

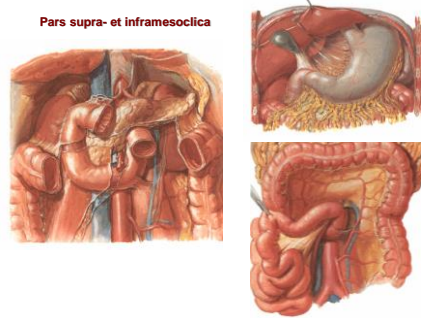


Peritoneum

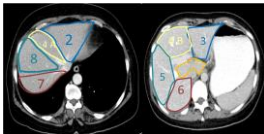


- Praeperitoneal space
- Peritoneal space
- Retroperitoneal space

Pars supra- et inframesocolica

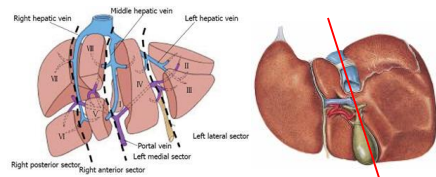


Segments of the liver

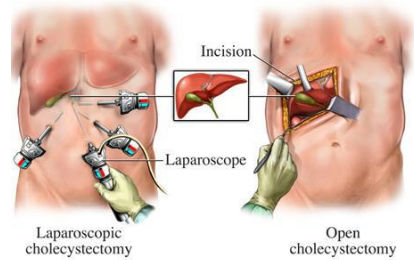


v. portae, vv. hepaticae

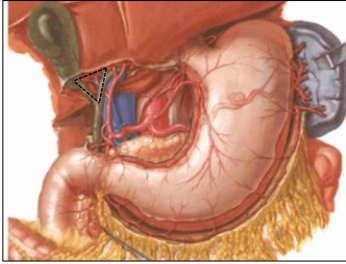
Cantlie's line



Cholecystectomy

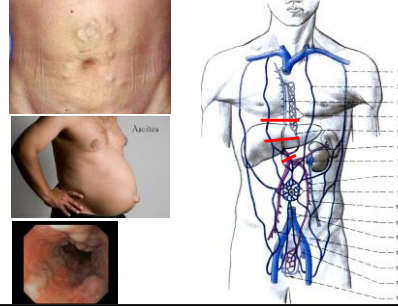


Vasa cystica



Calot's triangle (trigonum cystohepaticum): ductus cysticus, ductus hepaticus communis, lobus quadratus

Portal hypertension



Transjugular intrahepatic portosystemic shunt (TIPS)

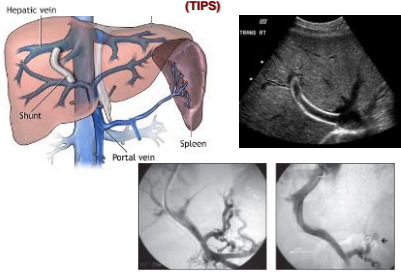
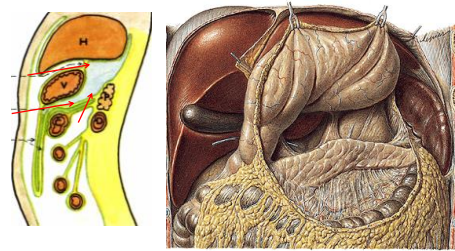
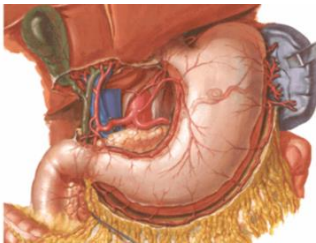


Figure 2. Pathology for direct transhepatic puncture. **A:** Before TIPS performance, an intense portal reflux through collateral vessels towards the gastrohepatic transition zone. **B:** As a supplement to TIPS, the collateral veins associated with metal coils shunt.

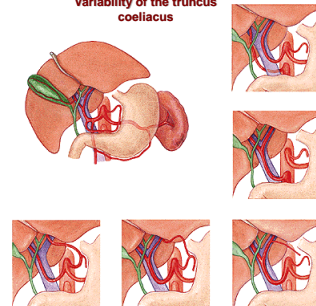
Pancreas – approaches

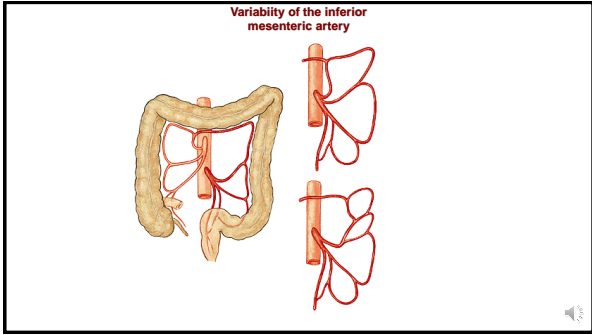
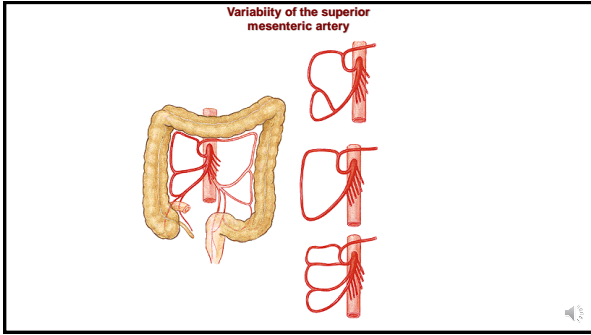
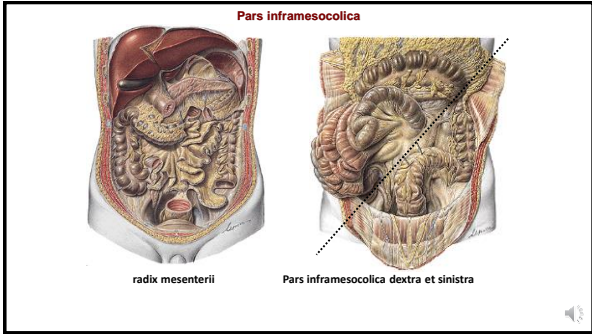
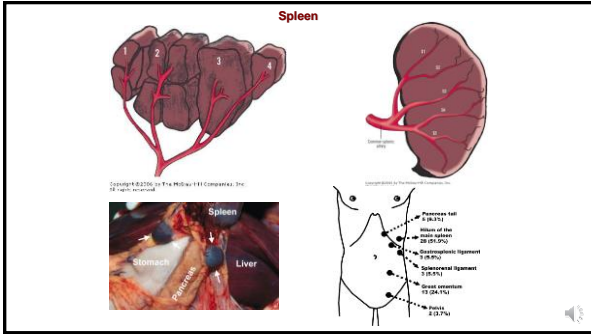
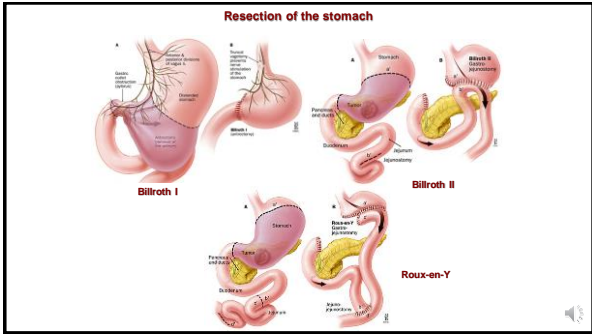
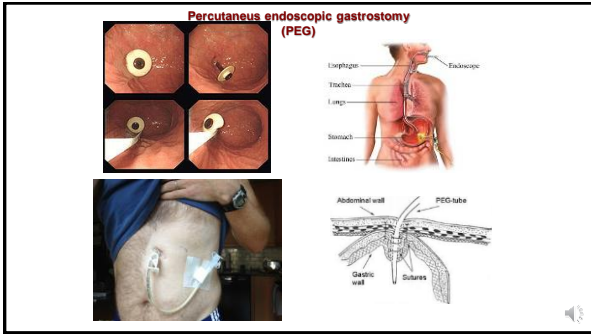


Blood supply of the stomach



Variability of the truncus coeliacus





Diverticulum Meckeli (ilei)

Remnant of ductus omphaloentericus
App. 100 cm from the terminal ileum

Appendix vermiformis

Positio pelvina (lig. appendiculoovaricum)

Positio retrocaecalis

Positio ileocaecalis

Positio praecaecalis

Positio laterocaecalis

Positio subcaecalis

Monroe's line (linea spinoumbilicalis dextra) – McBurney's point
Linea bispinalis – Lanz's point

Retroperitoneum

Primary retroperitoneal (kidney, suprarenal glands, genital glands)

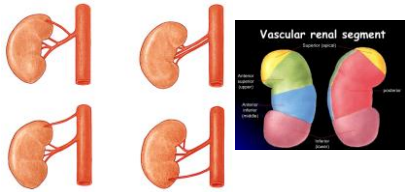
Secondary retroperitoneal:

- Duodenum (except for pars sup.)
- Pancreas
- Caecum
- Colon ascendens
- Colon descendens

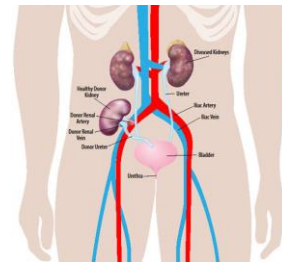
Extraperitoneal approach

Position of the kidney and puncture

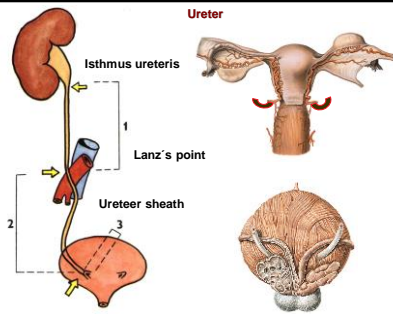
Blood supply of the kidney and segments



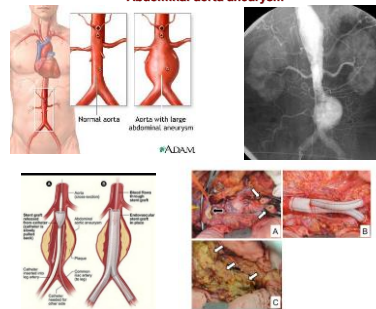
Kidney transplantation



Ureter



Abdominal aorta aneurysm



References:

- Putz, R. et al.: Atlas of Human Anatomy Sobotta. Elsevier Books, (2008).
- Netter, F. H.: Interactive Atlas of Human Anatomy. Windows Version 2.0. (1999).
- Čihák R.: Anatomie 2 (Splanchnologia). Avicenum, zdravotnické nakladatelství, Praha, (1988).
- Čihák, R.: Anatomie 3. Praha, Grada, (2004).
- Platzer, W. et al.: Atlas topografické anatomie. Grada Publishing, (1996).
- Grim, M. a kol.: Základy anatomie. 5. Anatomie krajín těla. Galén, (2002).
- Moore, K. L.: Clinical oriented anatomy. Third edition. Williams & Wilkins, A Waverly Company, (1992).
- Gilroy, A. M. et al.: Atlas of Anatomy. Thieme New York, Stuttgart, (2009).
- Sobotta, J.: Atlas of Human Anatomy Vol 1-2 Munich, Urban und Schwarzenberg, (1993)-
- Williams, P. & Warwick, R.: Gray's Anatomy, 37 ed, Churhill Livingstone, (1996).