

# **GENERAL EMBRYOLOGY 1**

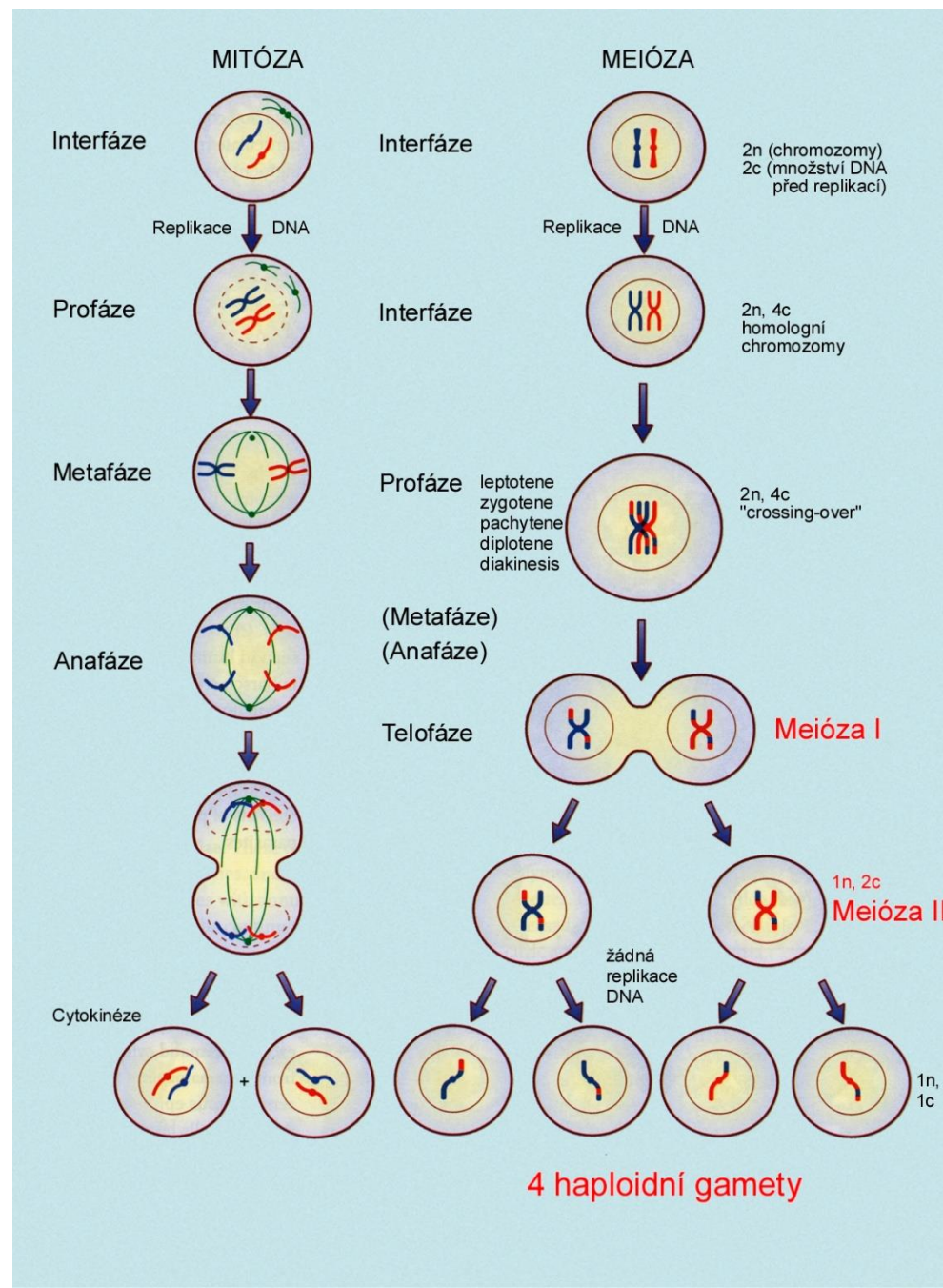
Meiosis. Development of gametes. Fertilization. Cleavage.

Implantation. Changes in blastocyst during implantation.

Differentiation of embryoblast and trophoblast.

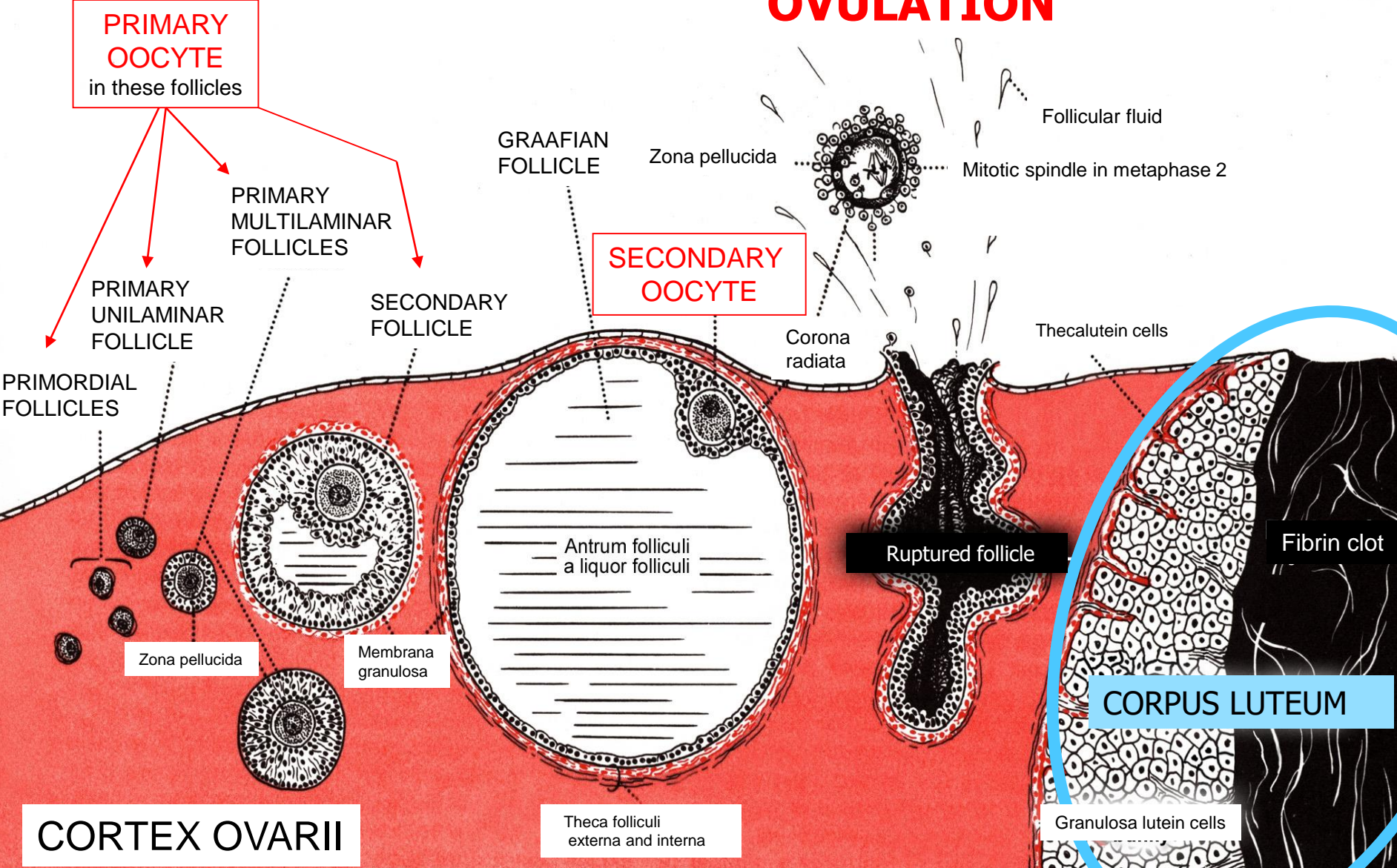
Germ disc. The axial organs of embryo. Development of embryonic mesoderm and notochord.

# MITOSIS and MEIOSIS – the main differences

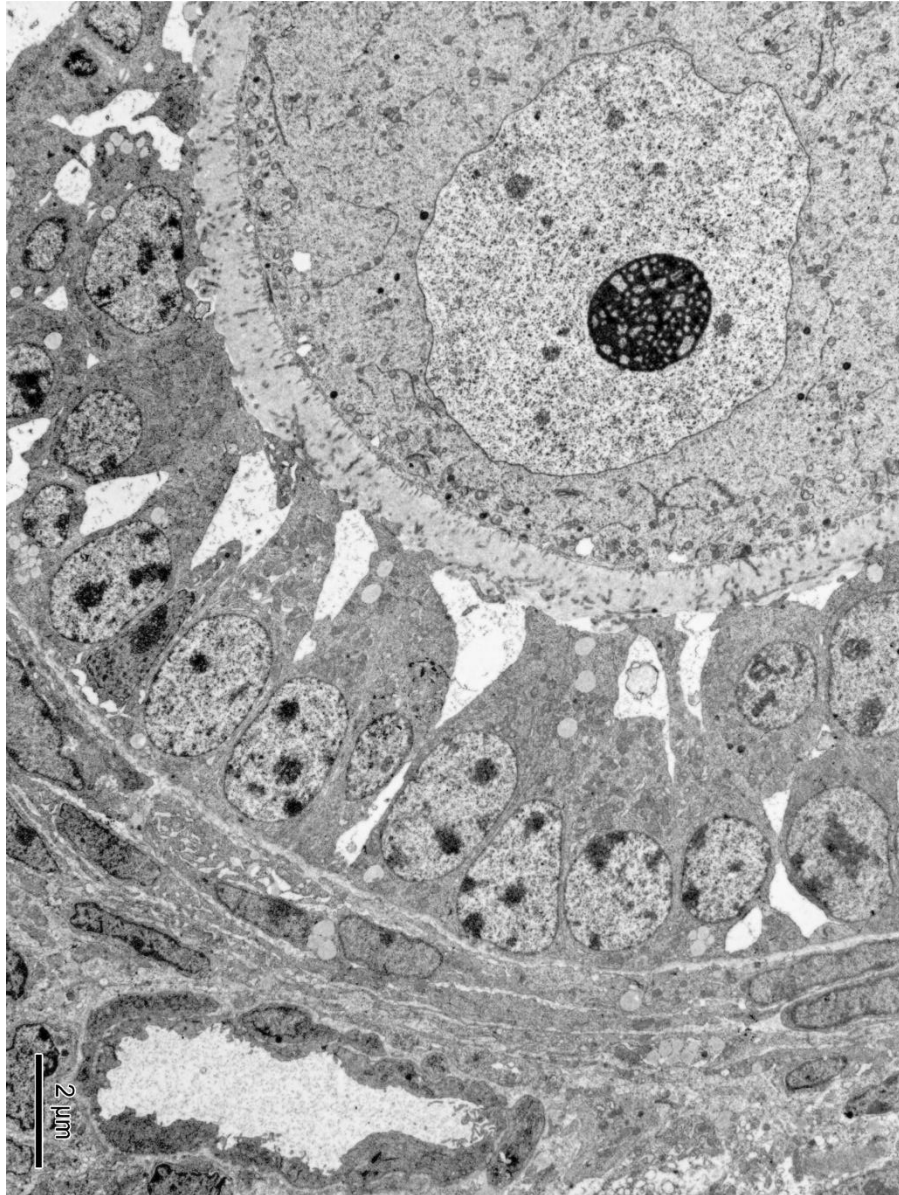


# GROWTH AND MATURATION OF OVARIAN FOLLICLES

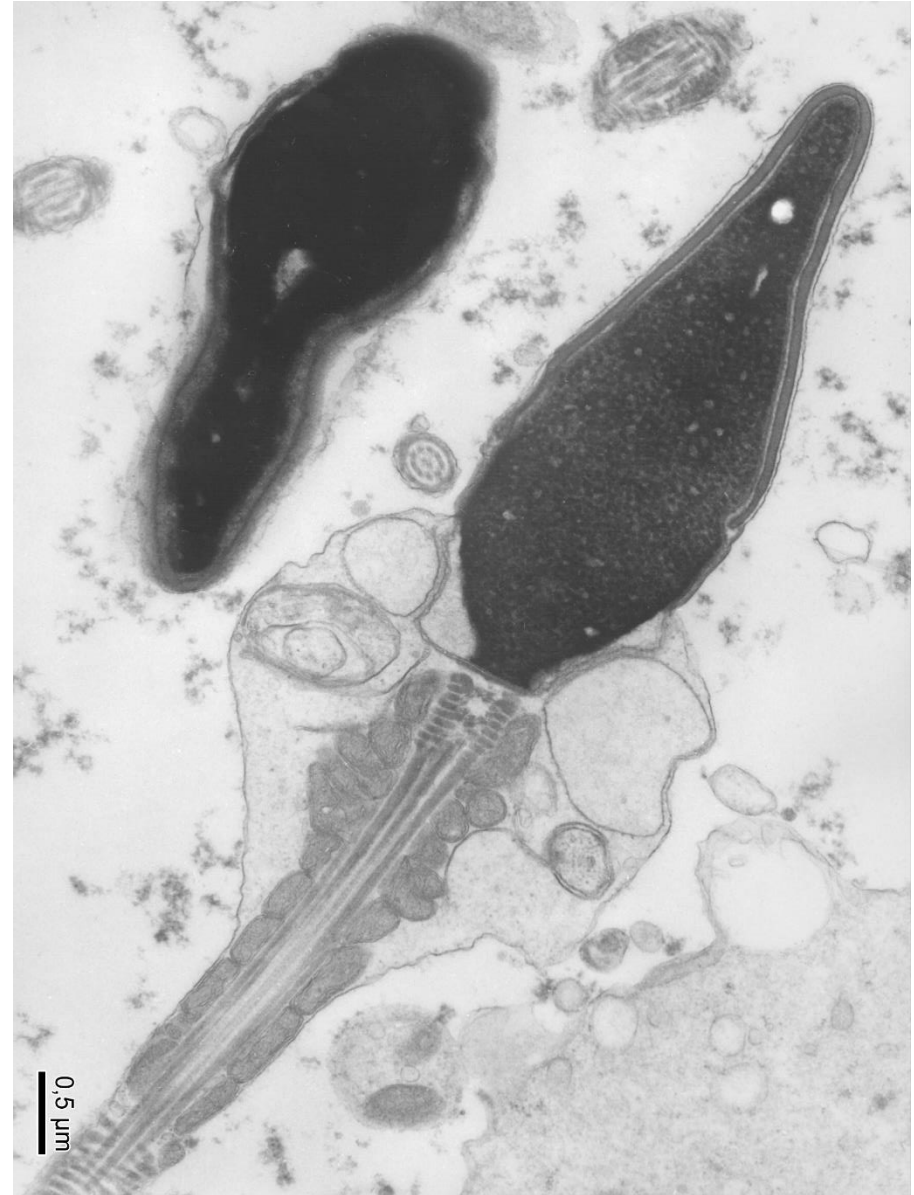
## OVULATION



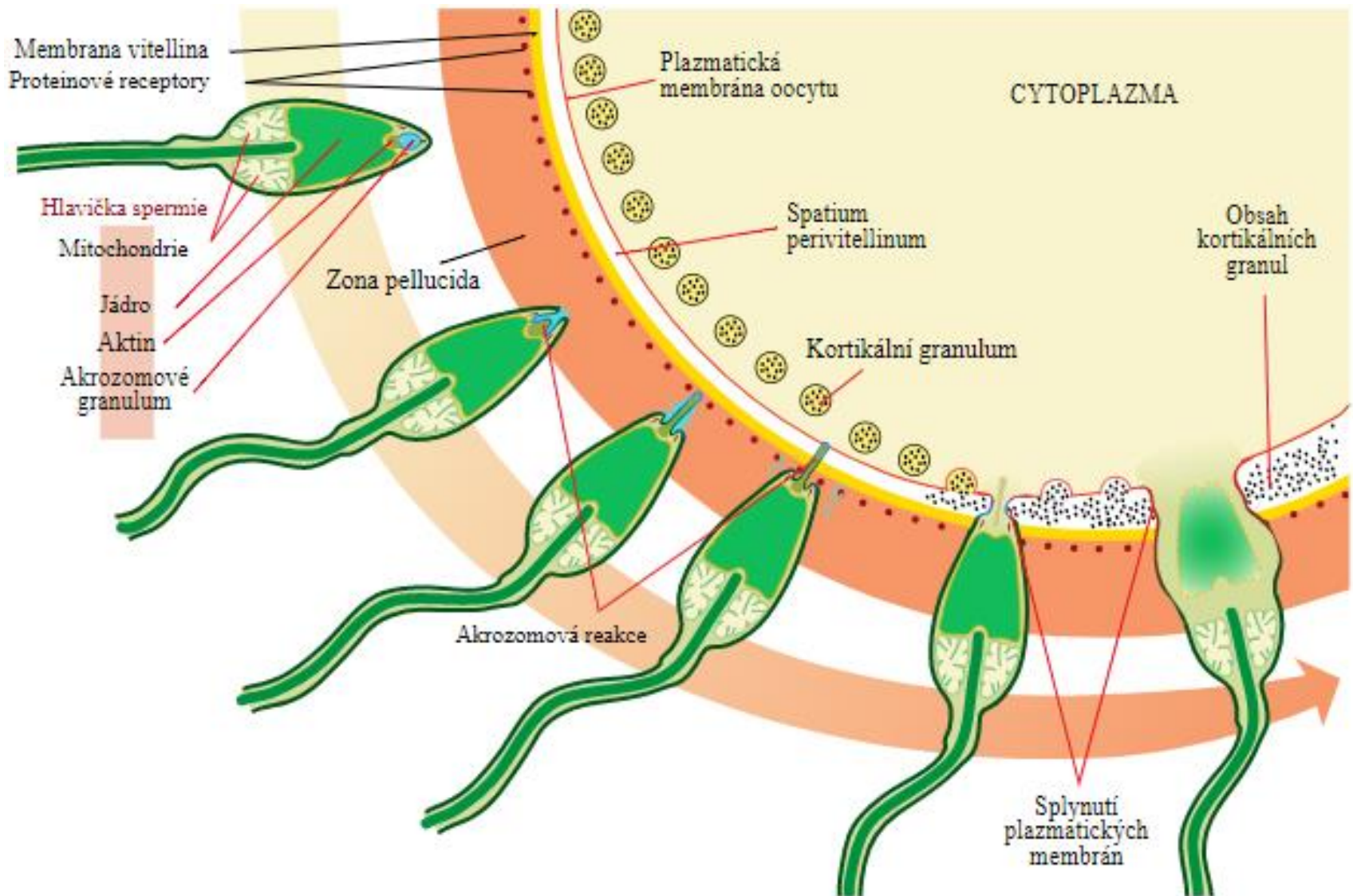
# Oocyte



# Sperm



# Acrosomal and cortical reaction

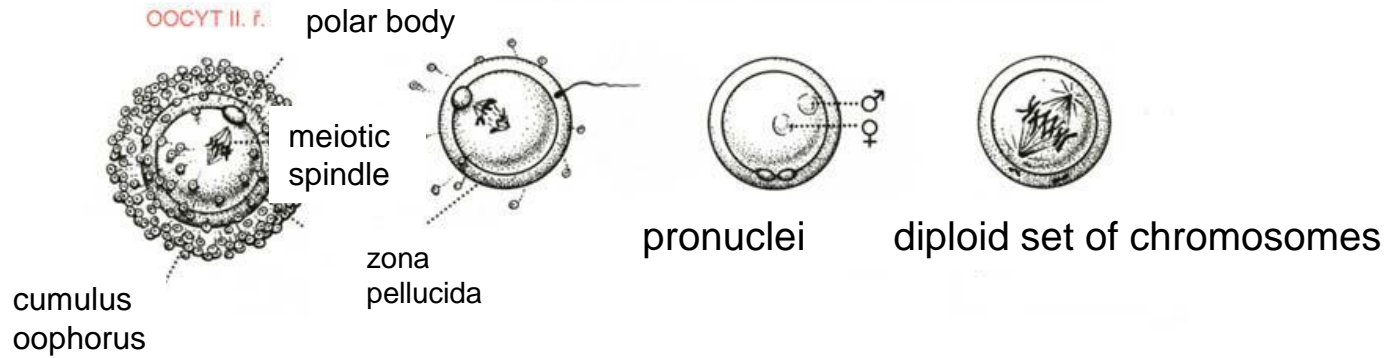


# FERTILIZATION AND IMPLANTATION

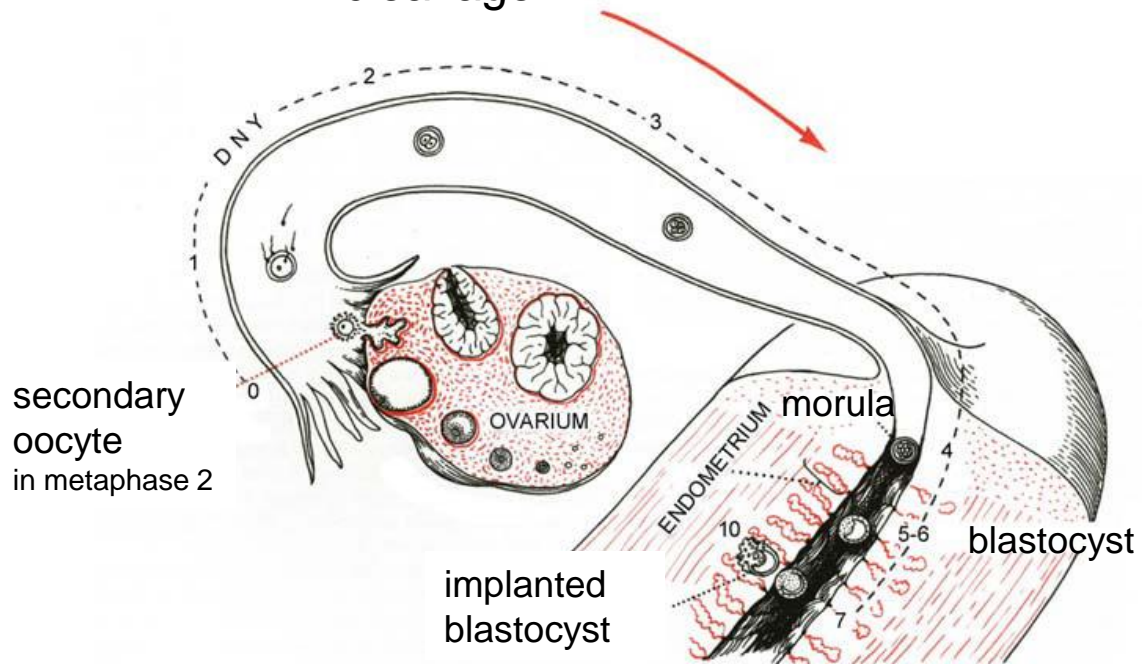
oocyte II

sperm penetration

zygote



cleavage



# FERTILIZATION

zygote

– 18 h after fertilization



24 h



45 h



morula - 72 h

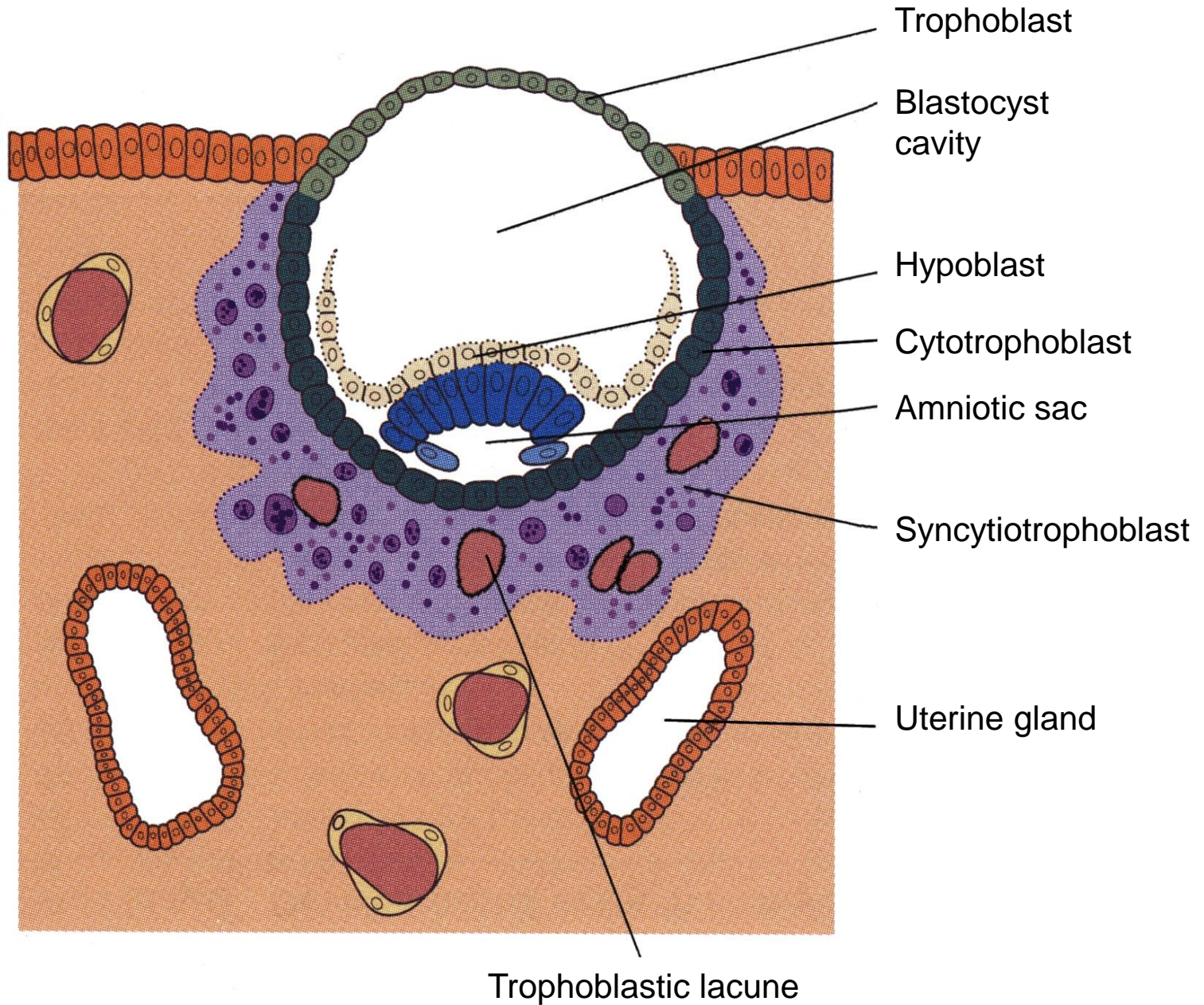


morula – 96 h



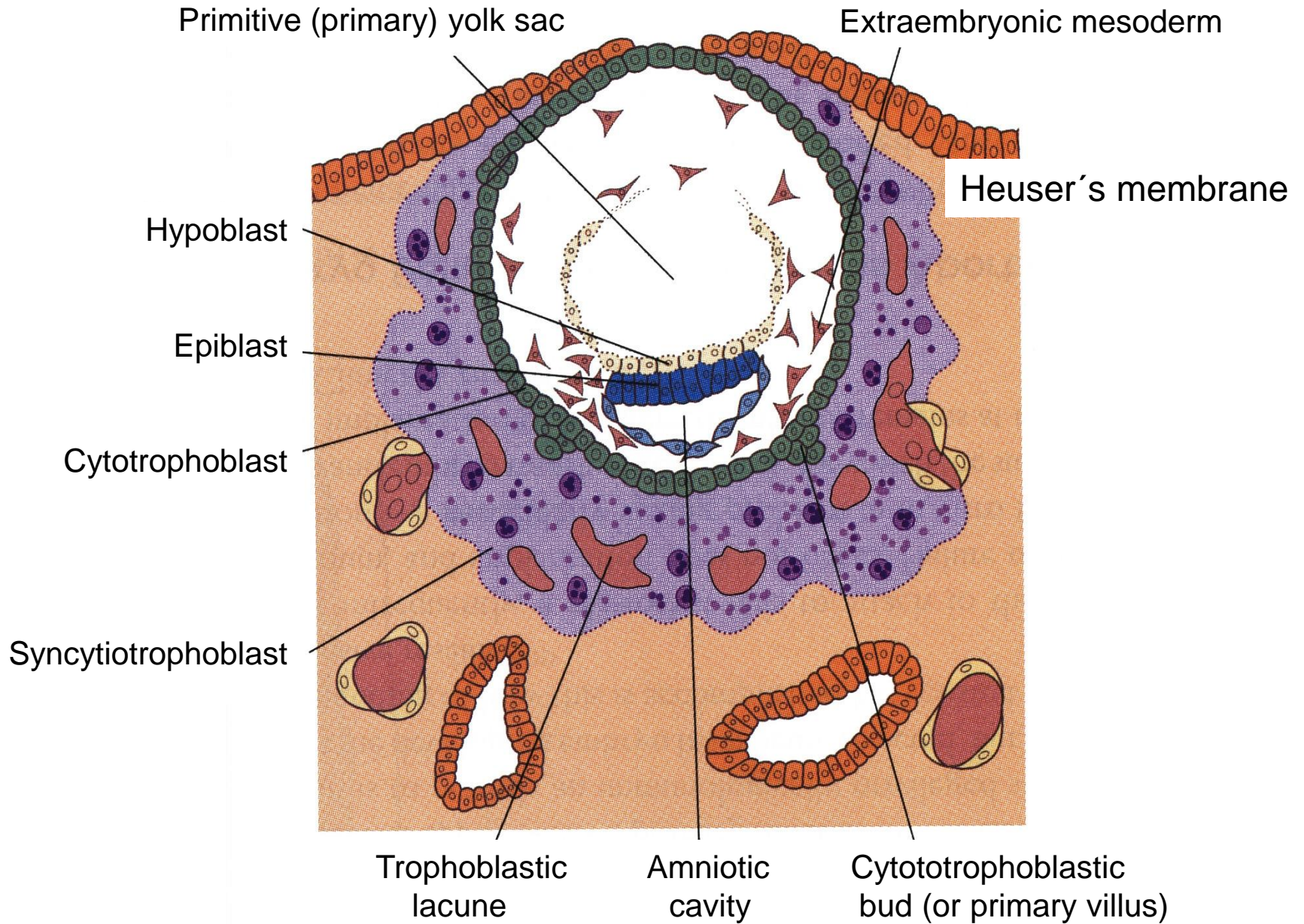
blastocyst

# IMPLANTATION – DAY 8 1/2

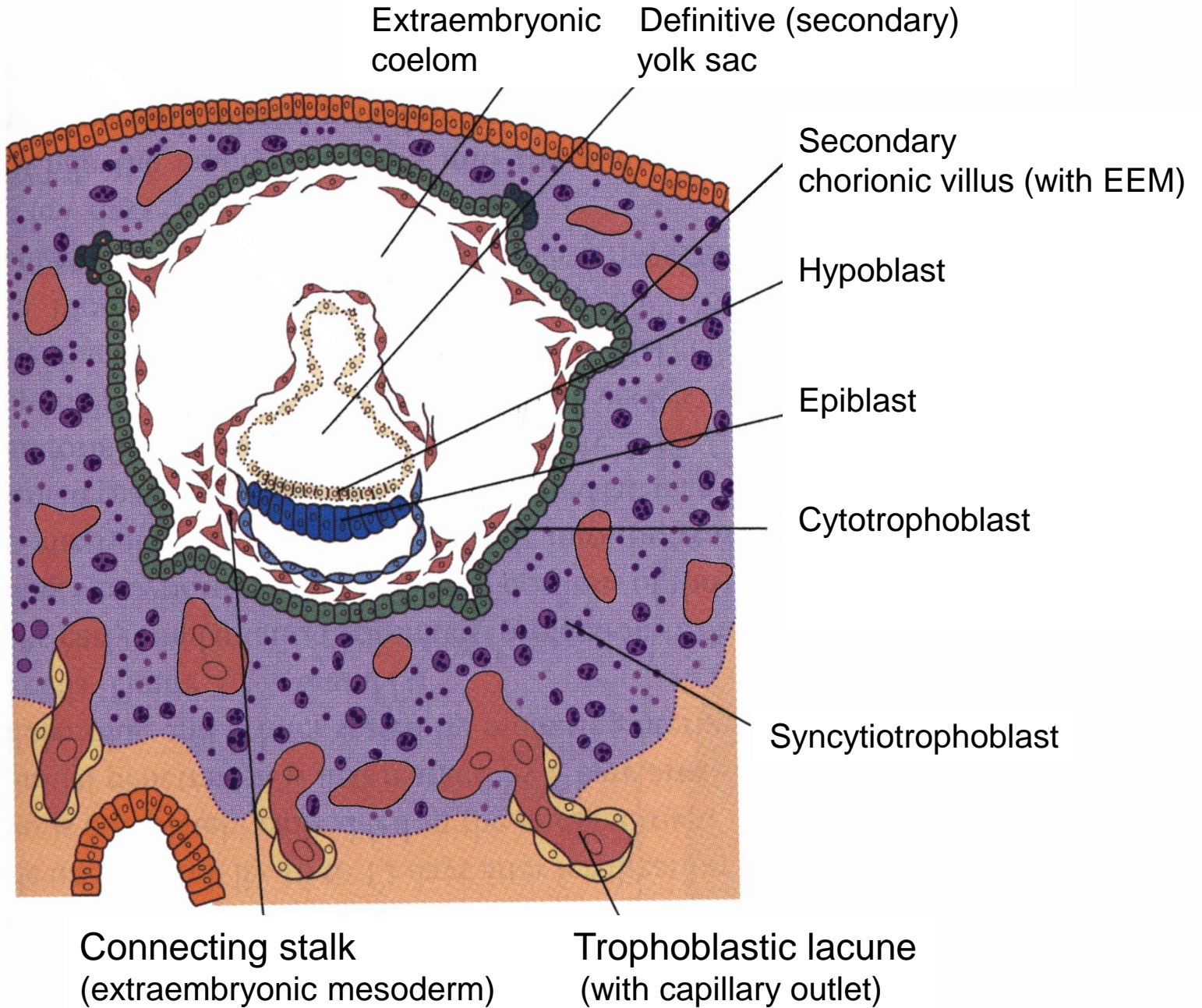




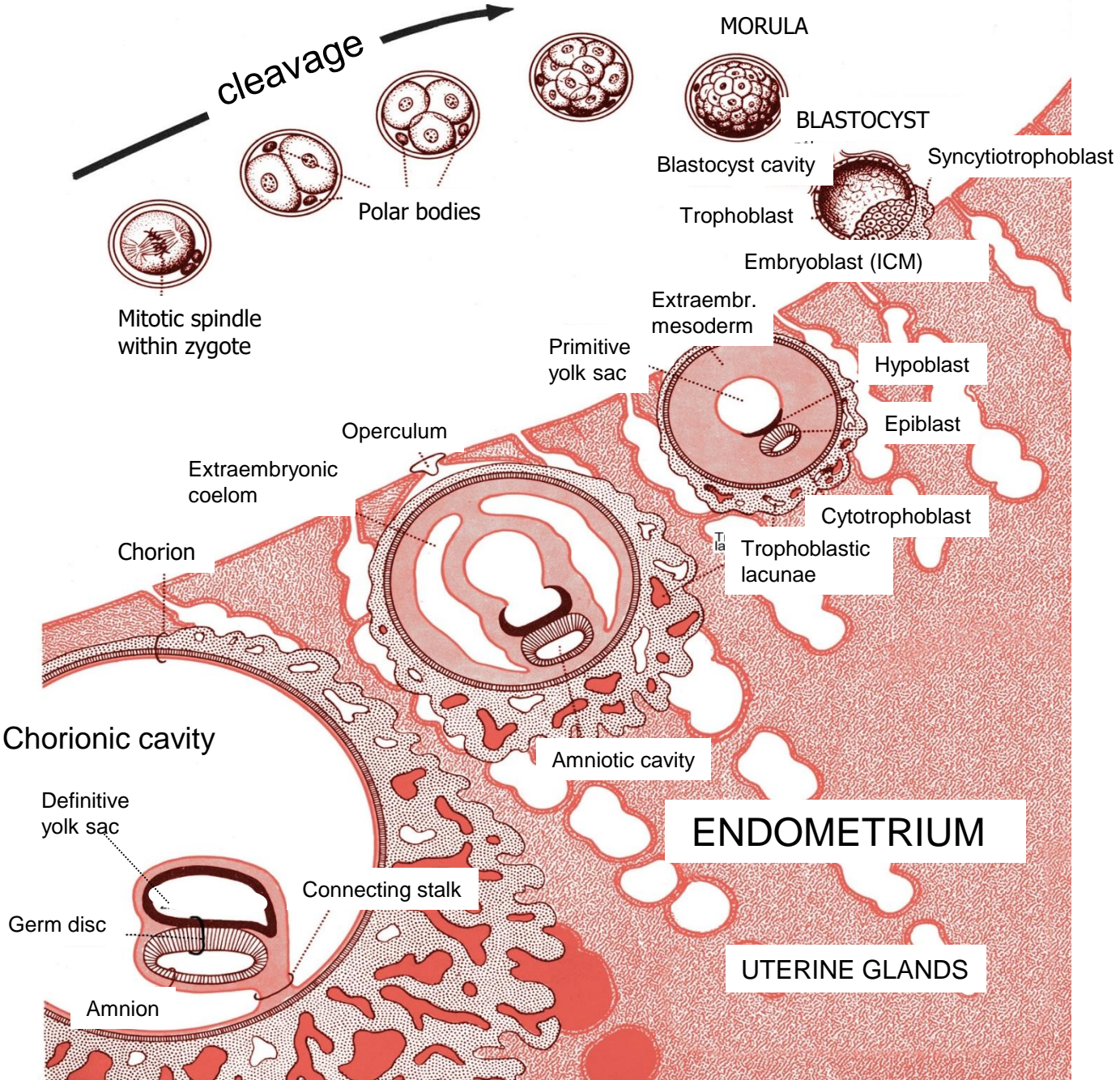
# IMPLANTATION – DAY 10

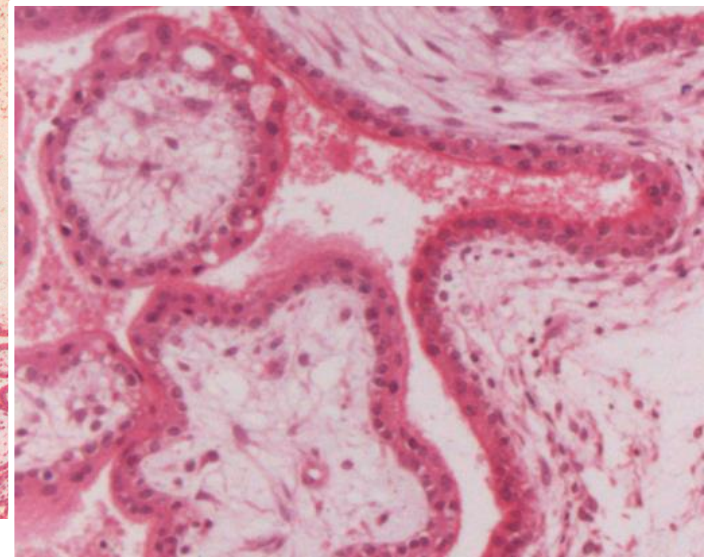
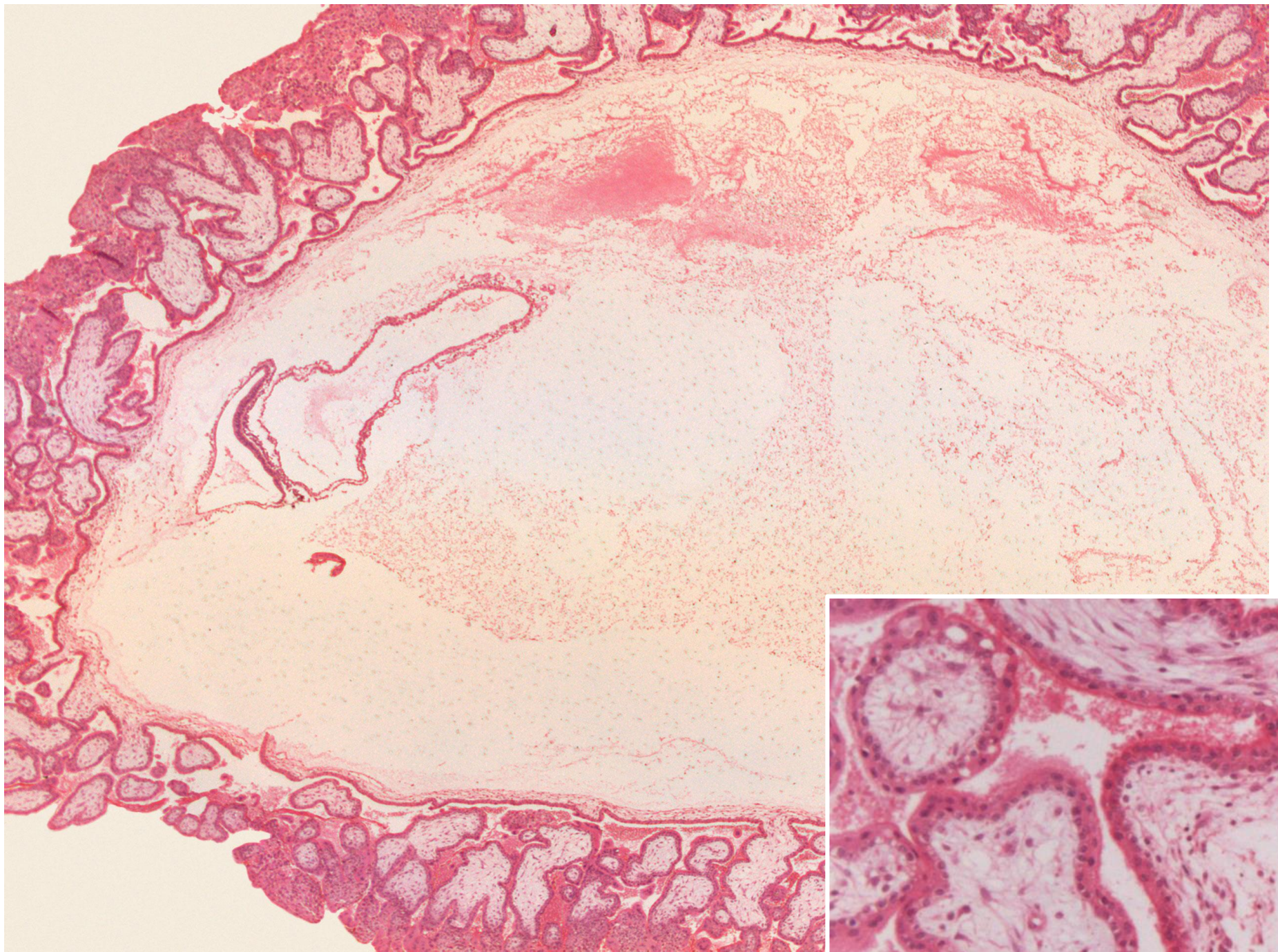


# IMPLANTATION – DAY 13

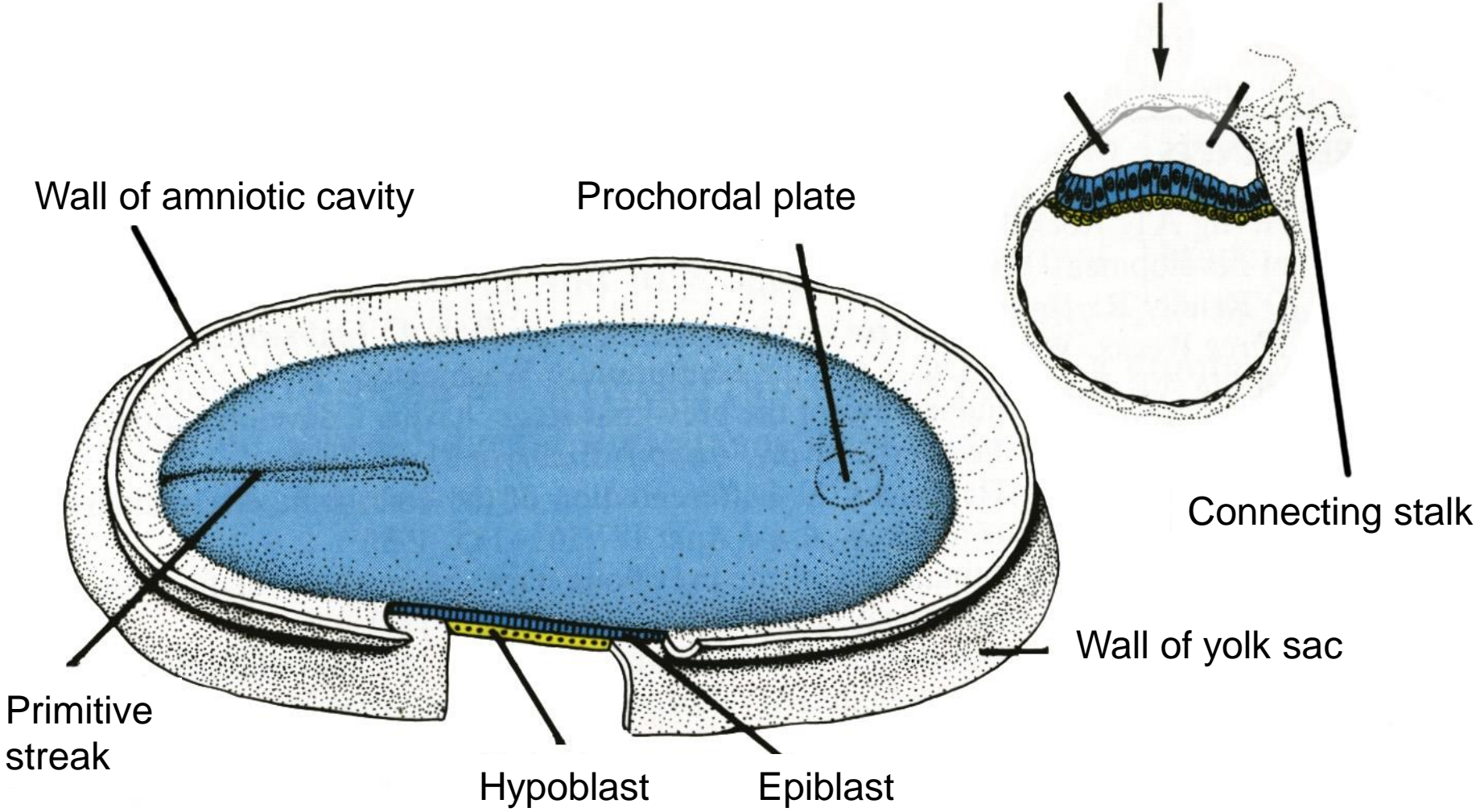


# CLEAVAGE AND IMPLANTATION

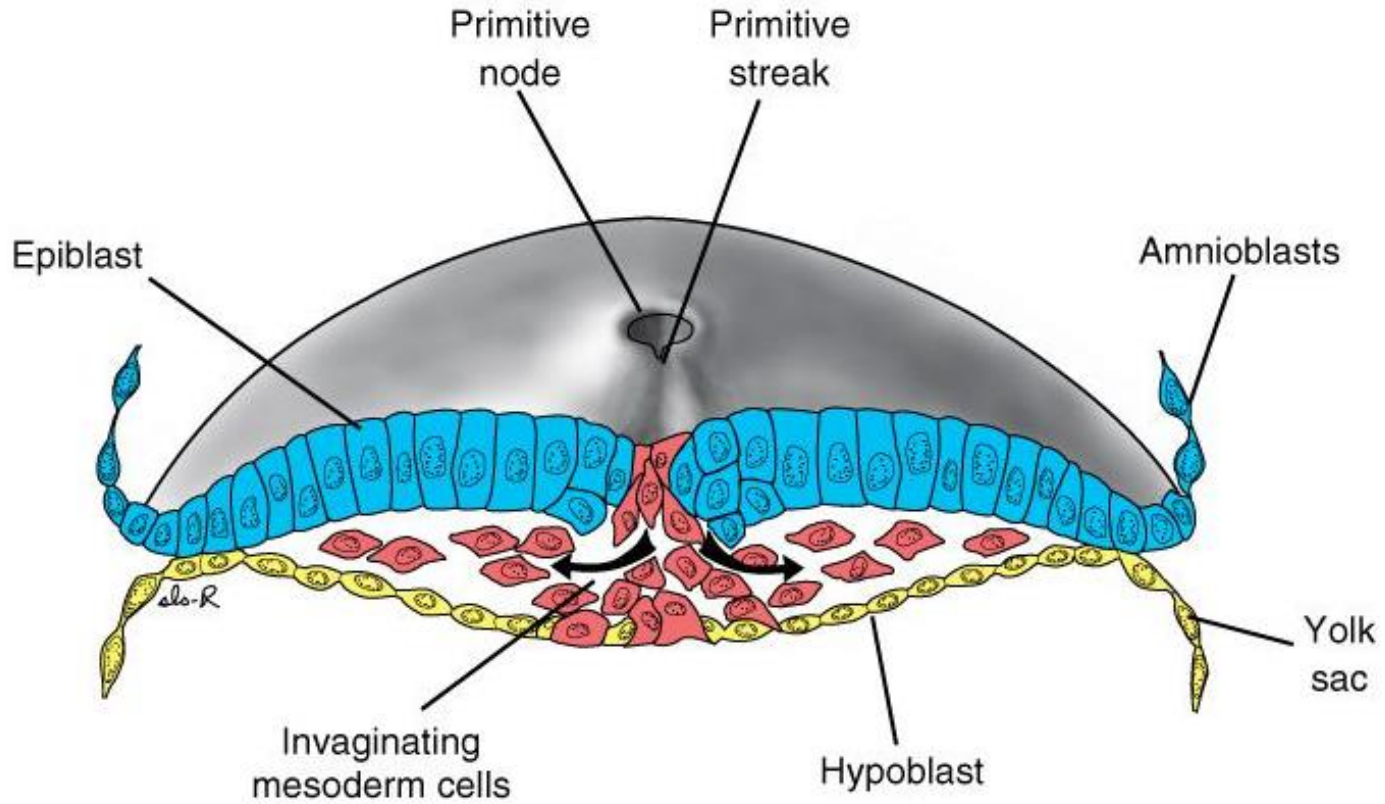




# DORSAL SIDE OF GERM DISC – DAY 14



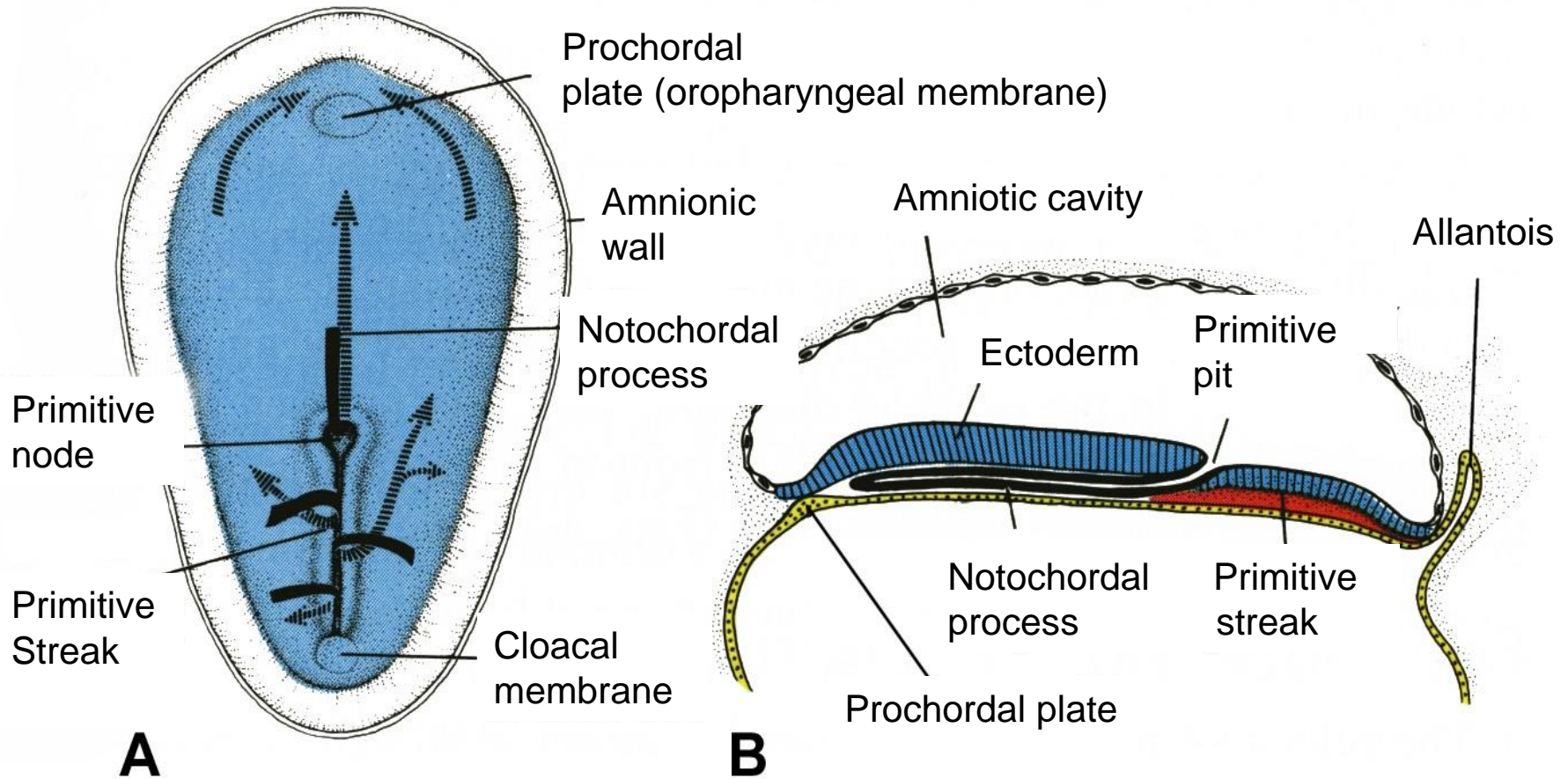
# Germ disc day 16



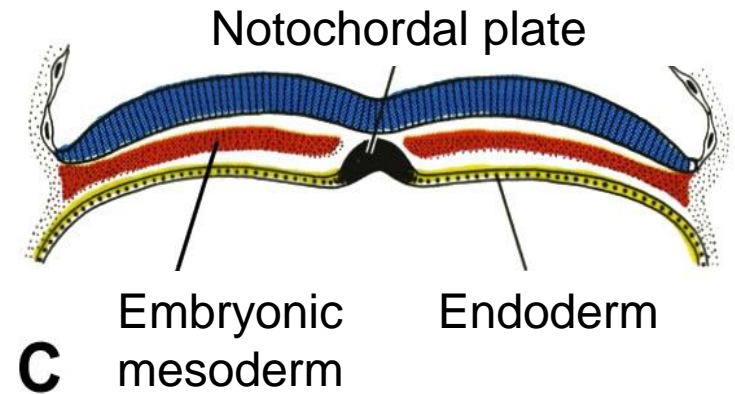
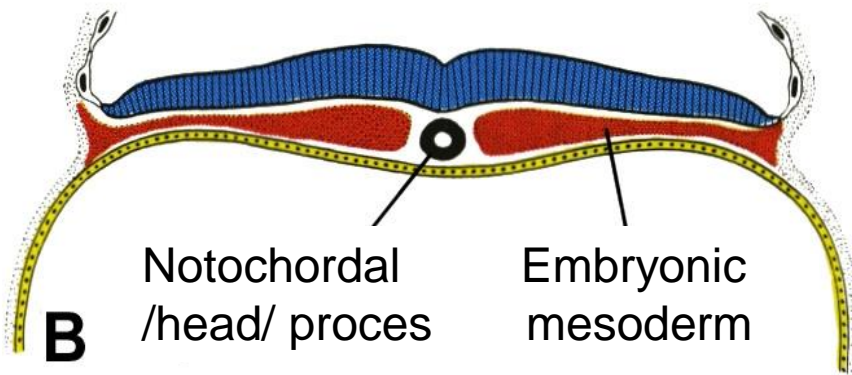
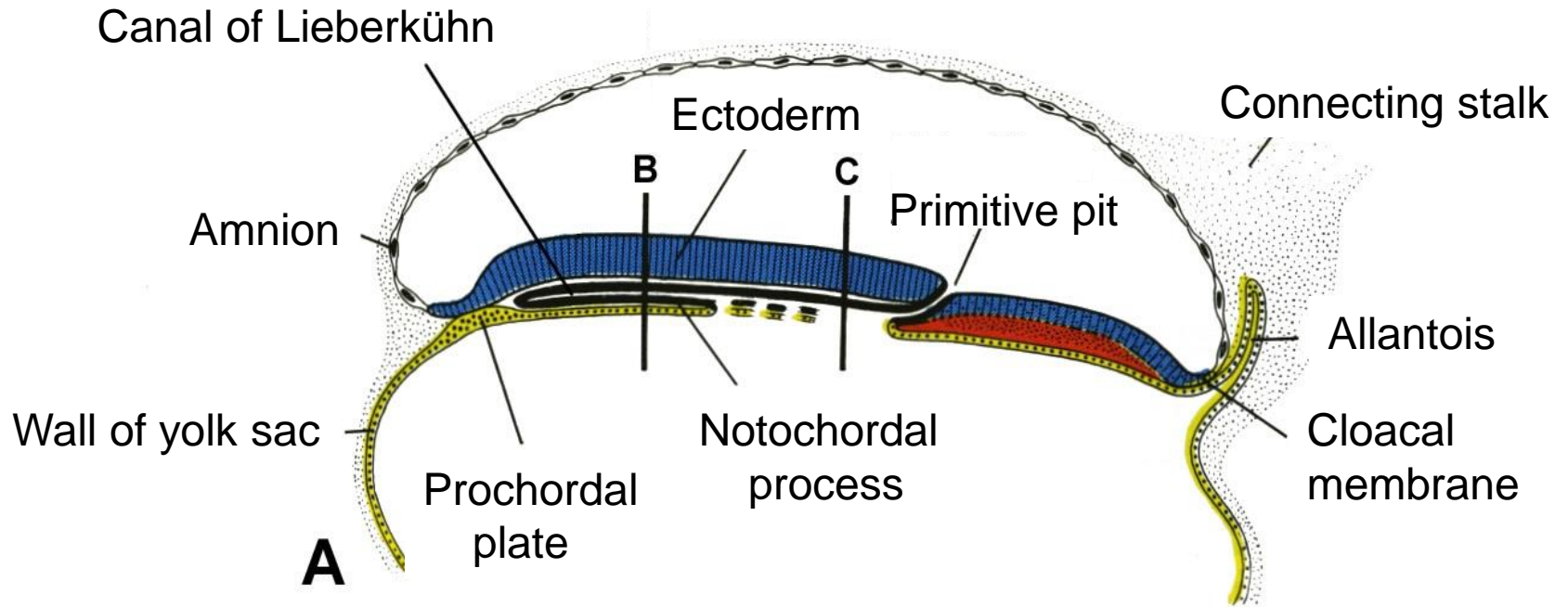
# GERM DISC - DAY 16

A – view on dorsal side

B – longitudinal section

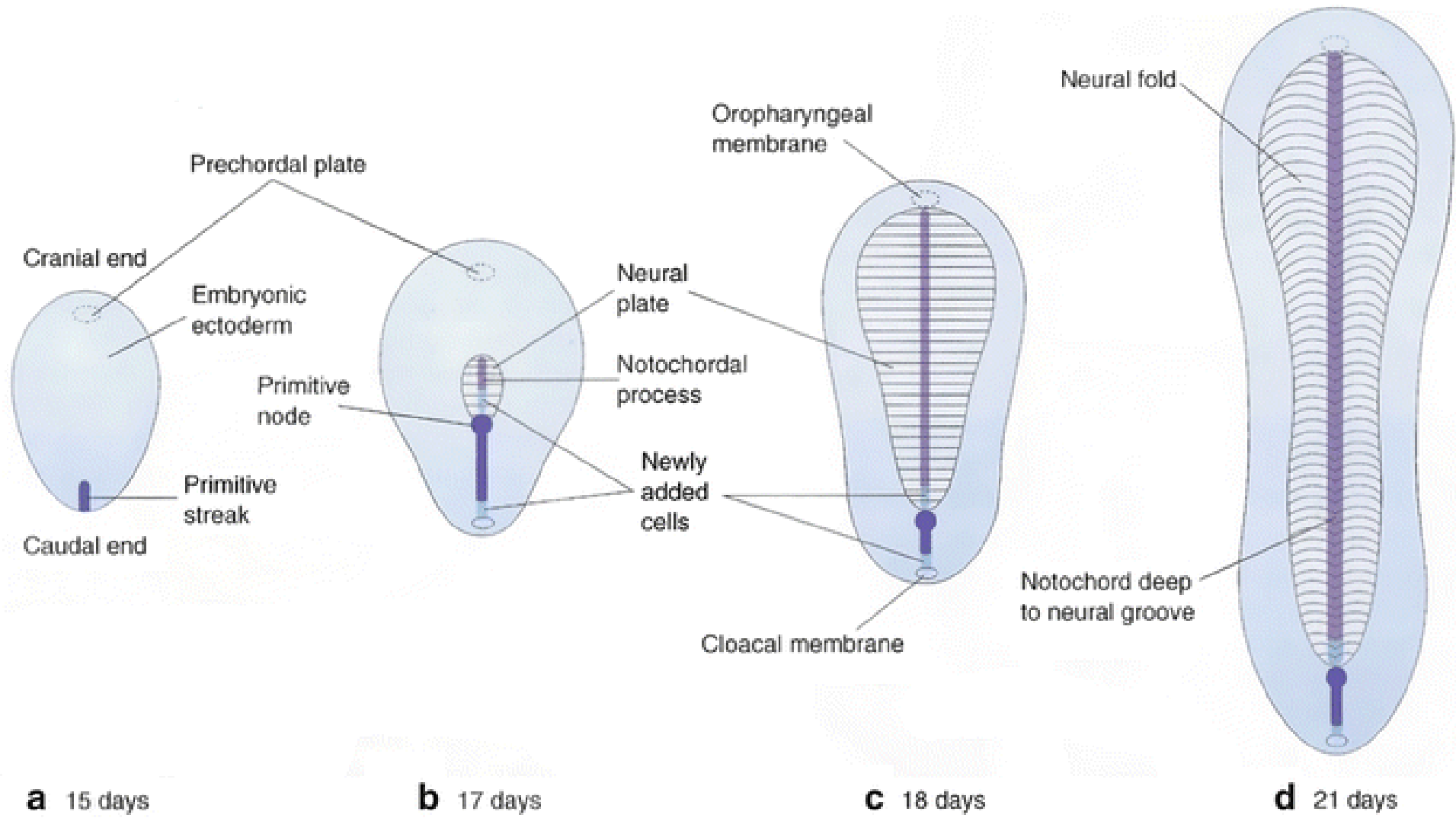


# GERM DISC - DAY 17



**A** – longitudinal section, **B**, **C** – transversal sections





# GENERAL EMBRYOLOGY I

- Set of embryological schemes I
- Atlas of Cytology and Embryology – pg. 71 – 79
  
- Discussion
- 3 embryological schemes according to teacher instructions