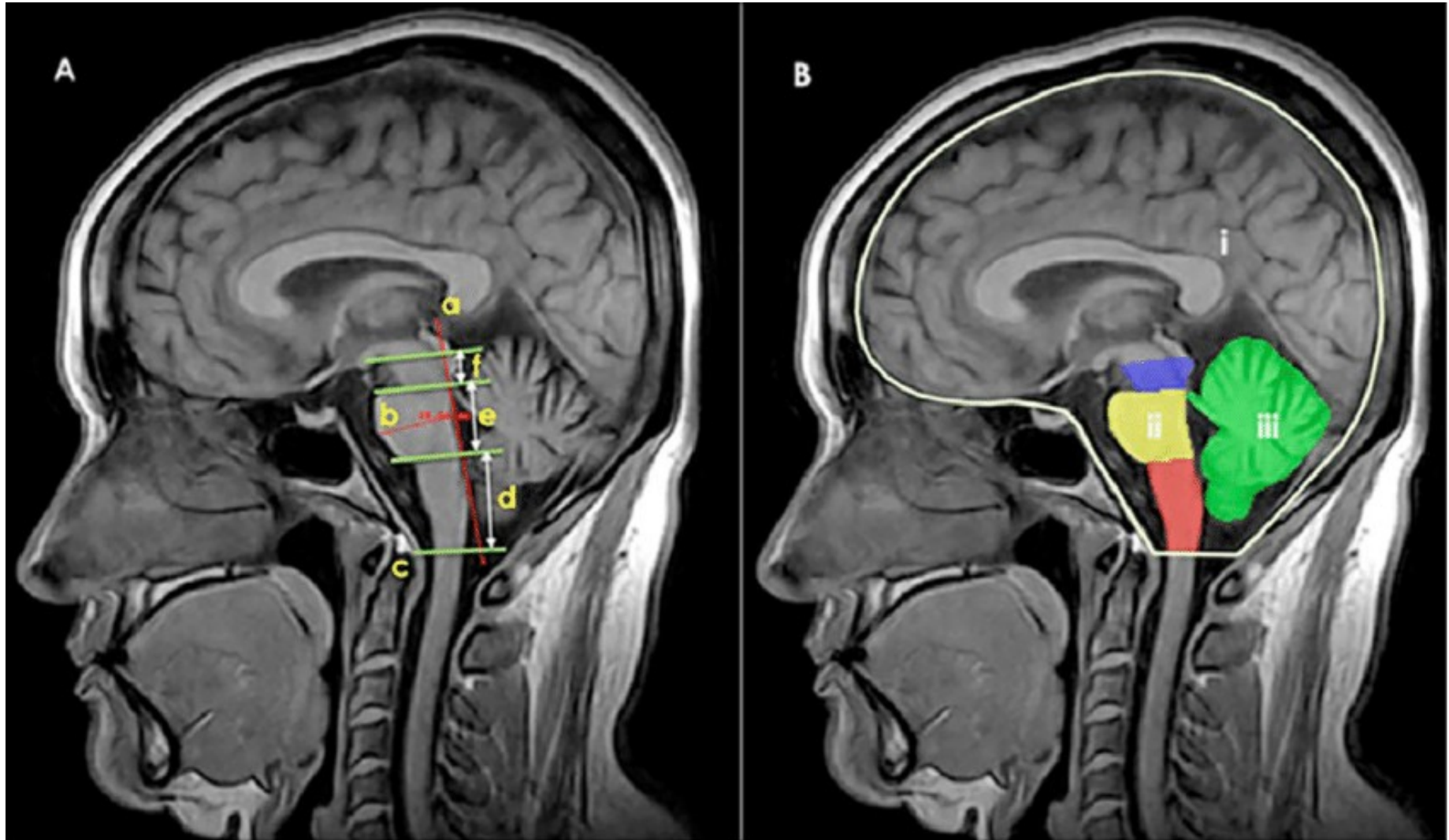
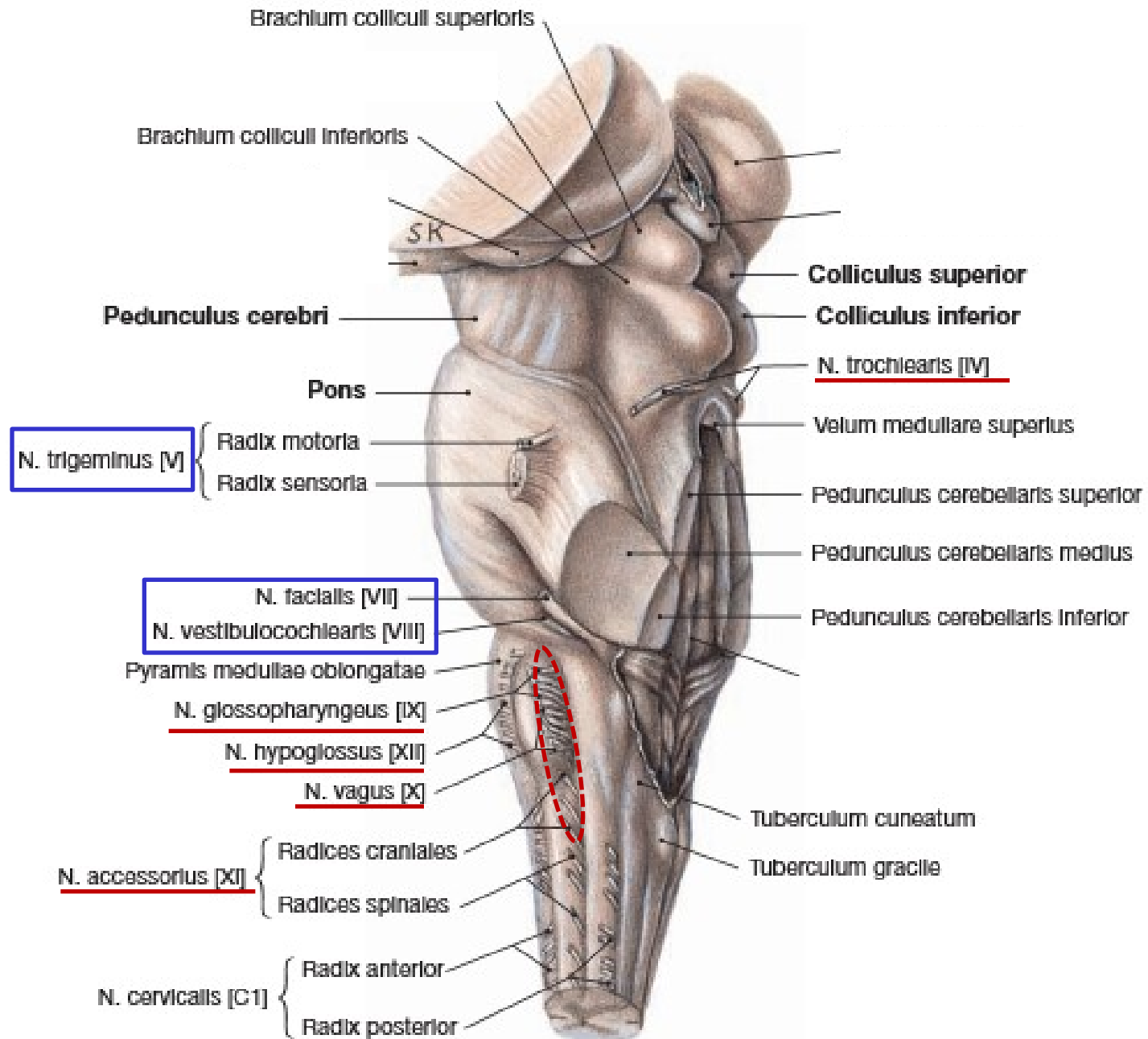
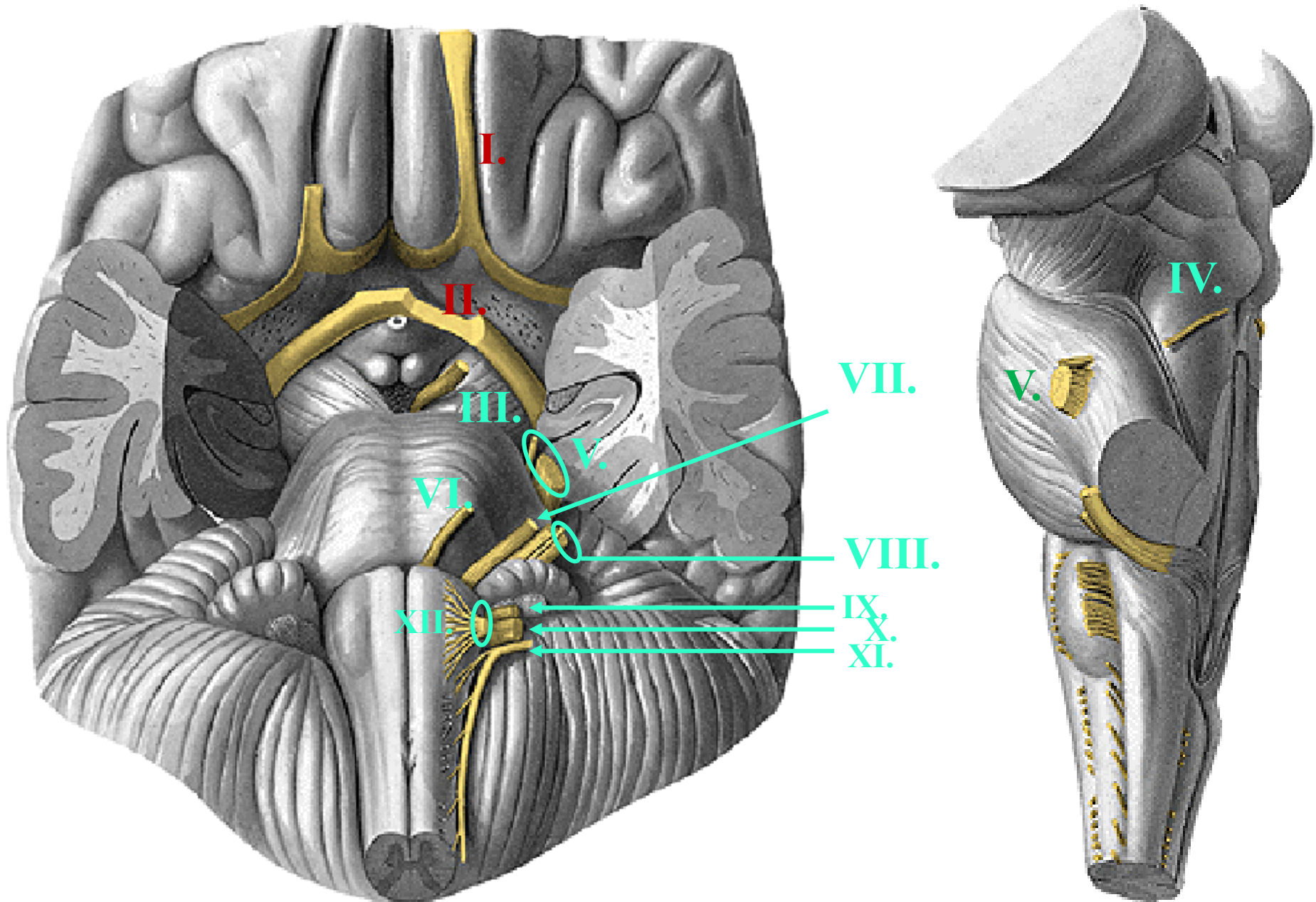


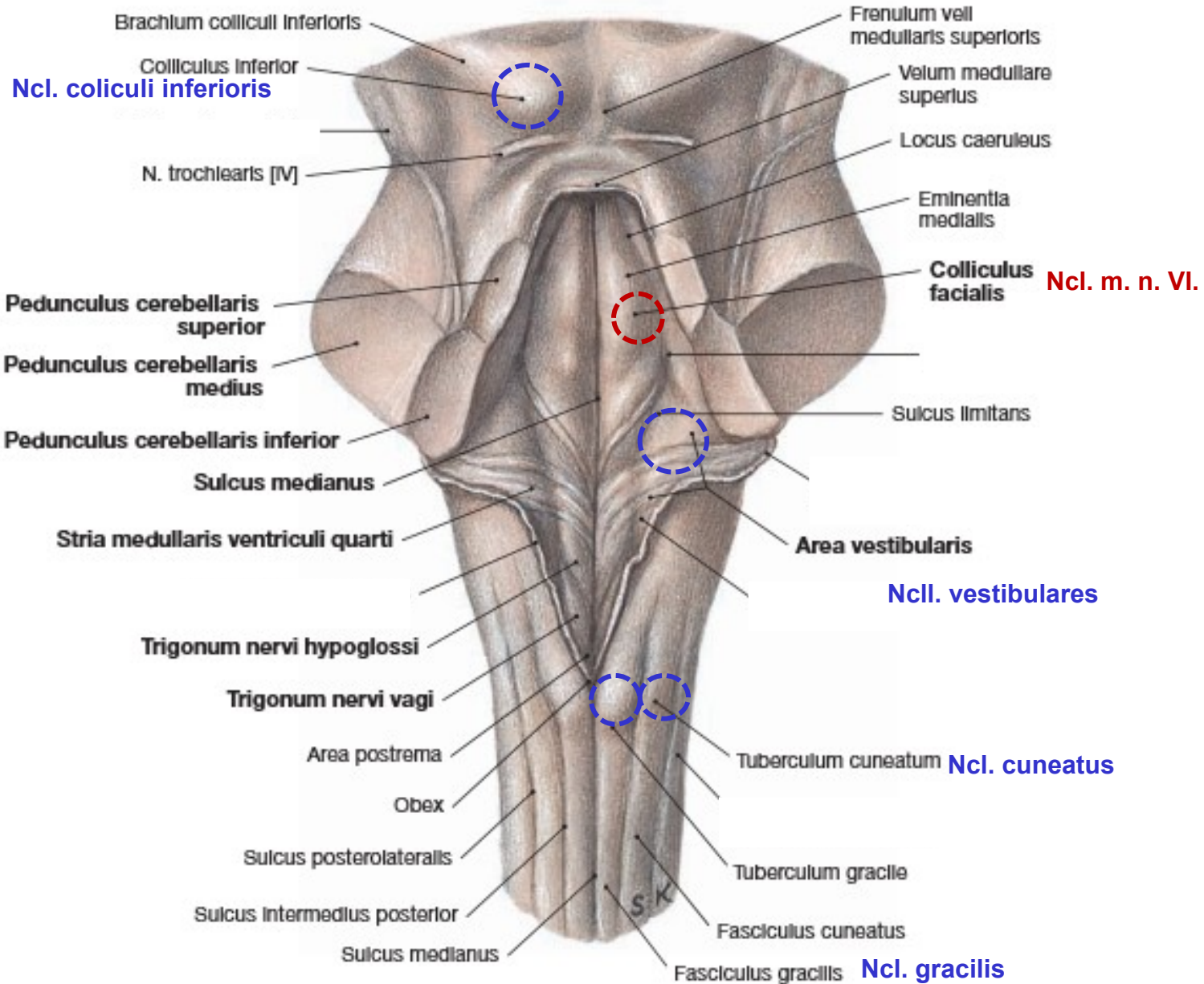
# MOZKOVÝ KMEN





# MOZKOVÝ KMEN – Odstupy hlavových nervů





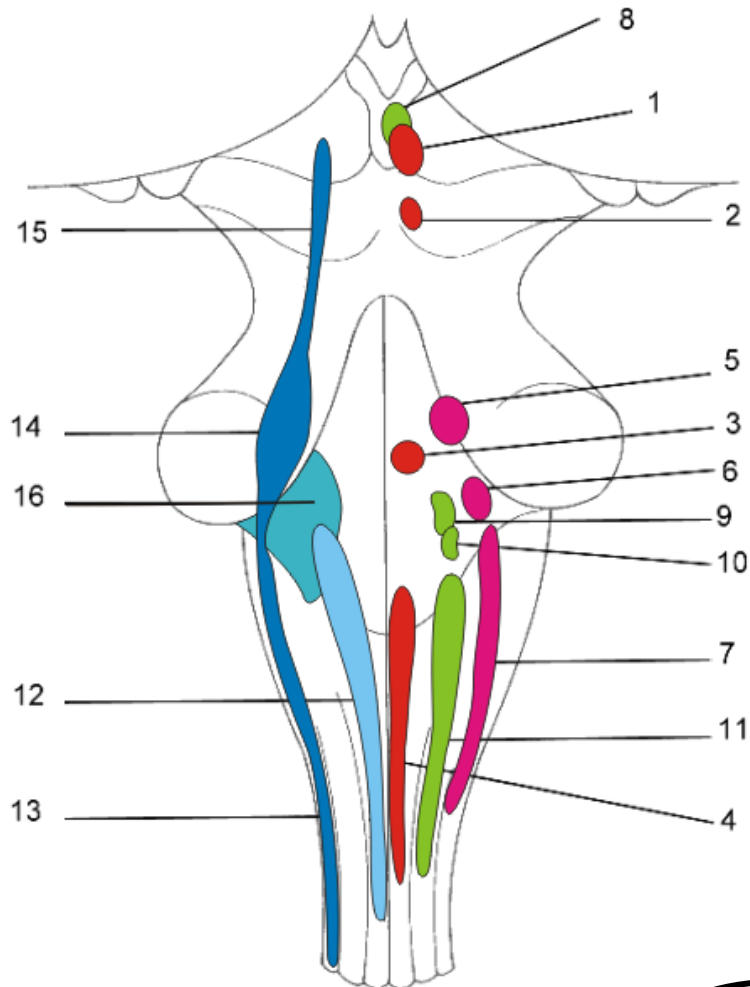
**Ncl. colliculi inferioris**

**Ncl. m. n. VI.**

**Ncll. vestibulares**

**Ncl. cuneatus**

**Ncl. gracilis**



**SM**

- 1 - ncl. motorius (originis) n. III.
- 2 - ncl. motorius (originis) n. IV.
- 3 - ncl. motorius (originis) n. VI.
- 4 - ncl. motorius (originis) n. XII.

**BM**

- 5 - ncl. motorius (masticatorius) n. V.
- 6 - ncl. motorius (originis) n. VII.
- 7 - ncl. motorius (originis) n. IX., X., et XI (ncl. ambiguus)

**VM**

- 8 - ncl. parasympathicus n. III (ncl. E.W.)
- 9 - ncl. parasympathicus n. VII.
- 10 - ncl. parasympathicus n. IX.
- 11 - ncl. parasympathicus n. X.

**VS**

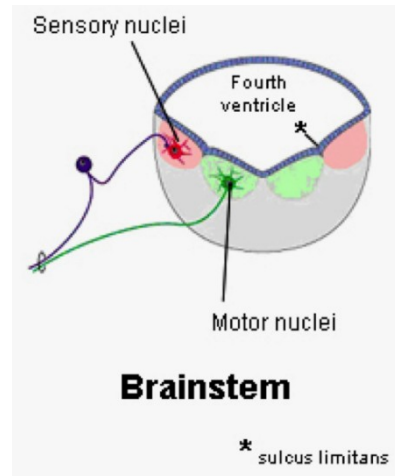
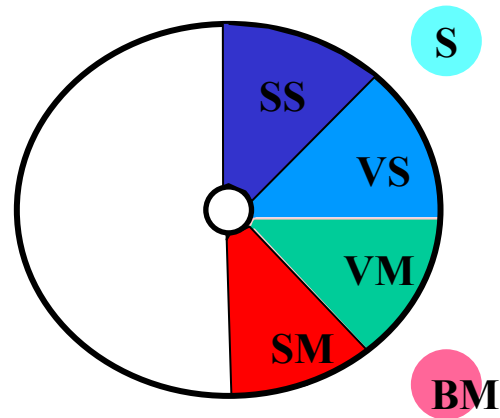
- 12 - ncl. solitarius

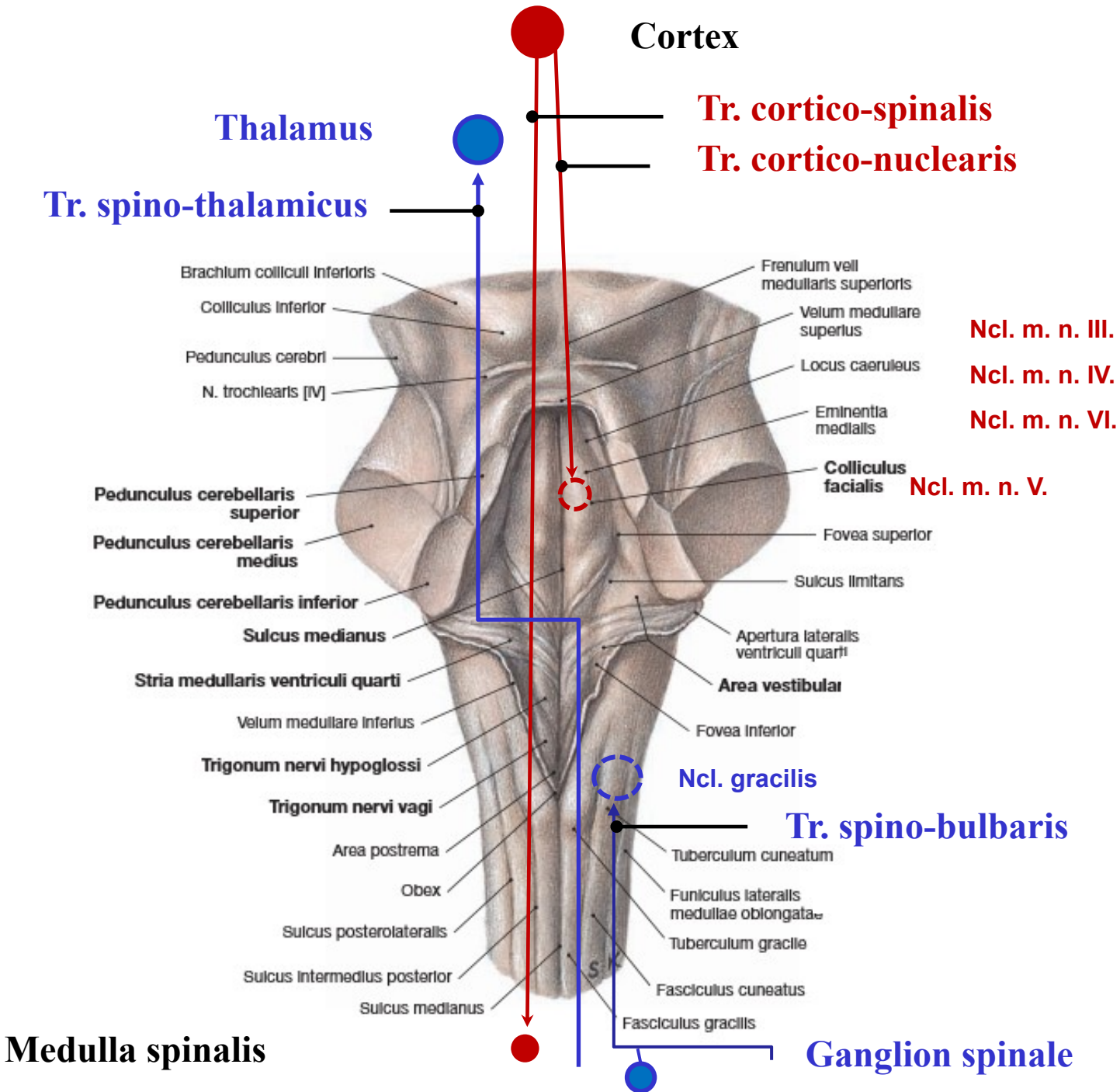
**SS**

- 13 - ncl. spinalis n. V.
- 14 - ncl. principalis n. V.
- 15 - ncl. mesencephalicus n. V.

**S**

- 16 - ncl. cochleares et vestibulares





## Nepodkročitelné minimum – mozkový kmen

Zevní popis – oddíly mk a odstupy hl. nervů

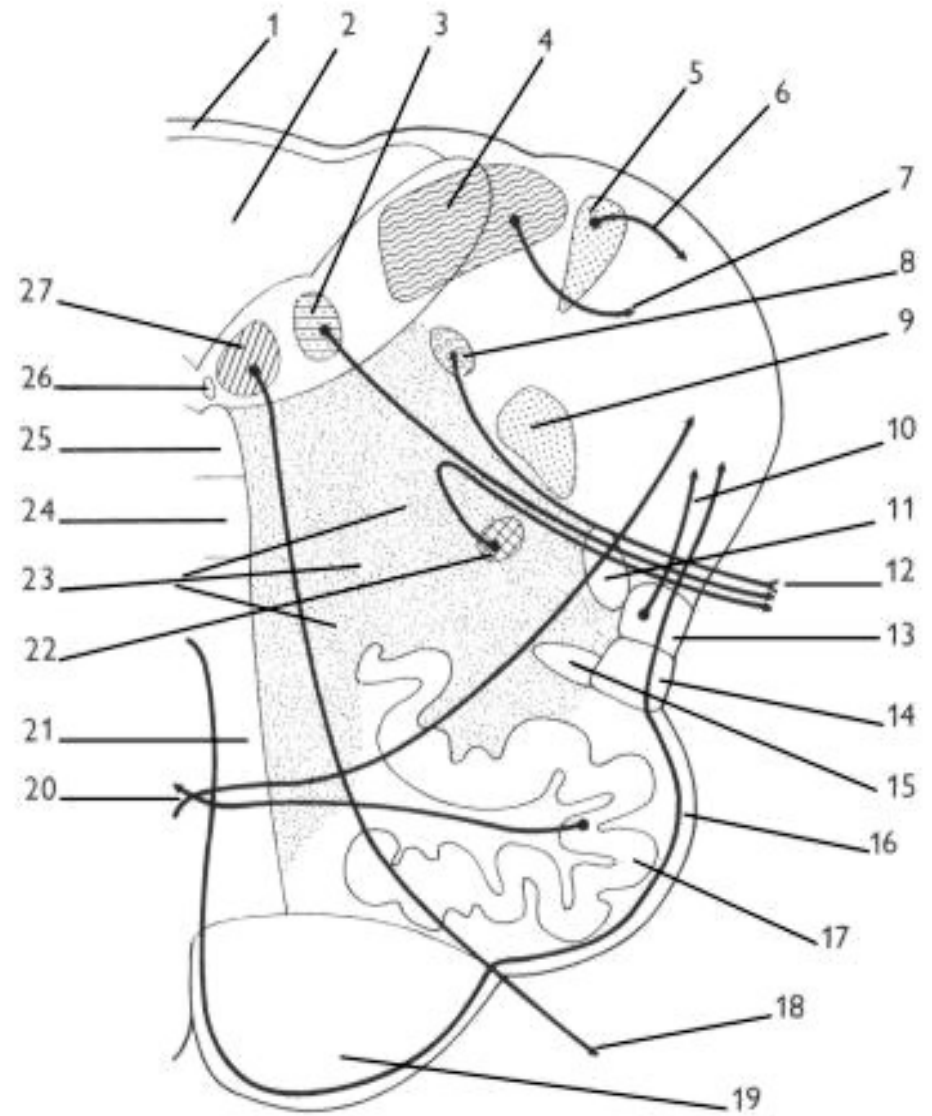
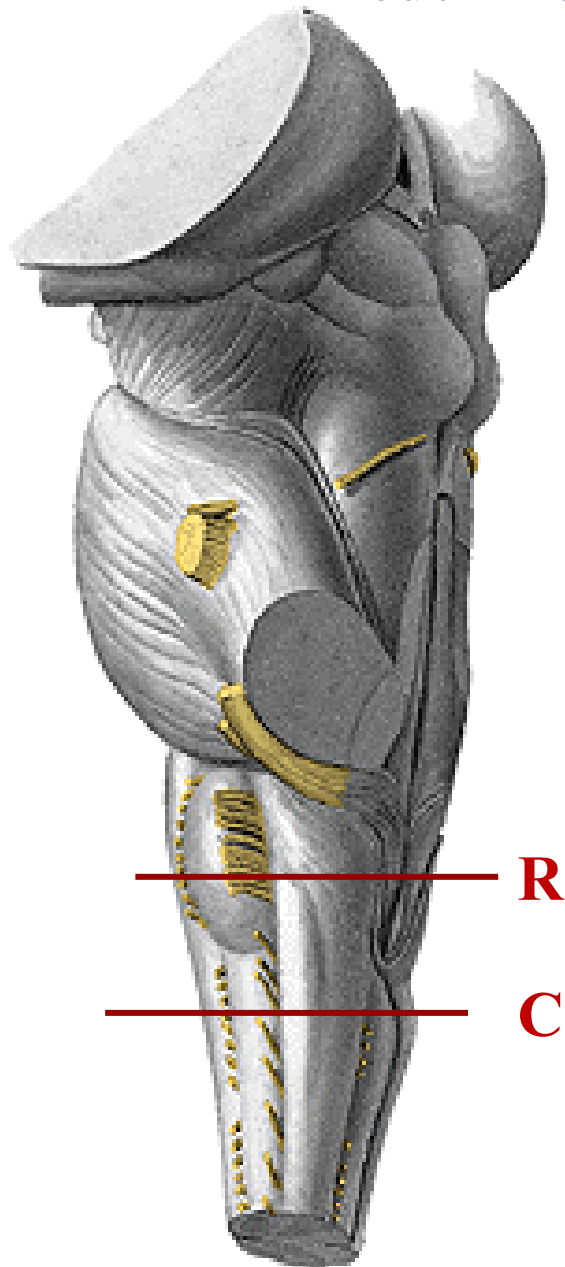
Strukturální charakteristika jednotlivých oddílů mk

Základní struktury šedé hmoty – jádra hl. nervů, oliva, SN, ncl. ruber, FR

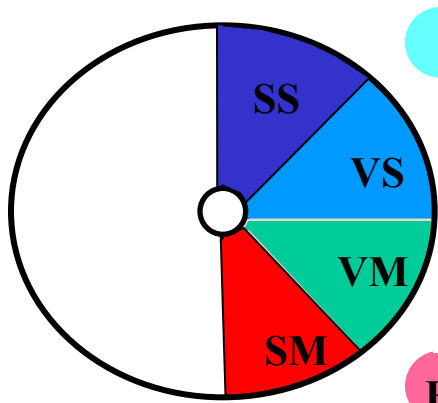
Základní struktury bíle hmoty

- **aferentní** - tr. spinalis n. V.
  - tr. cuneatus et gracilis
  - tr. spino-thalamicus
  - tr. spino-cerebellaris
  - lemniscus lateralis (LL)
  - lemniscus medialis (LM)
- **eferentní** - tr. cortico-spinalis
  - tr. tecto-spinalis
  - tr. vestibulo-spinalis
  - tr. reticulo-spinalis

# Medulla oblongata – representativní řezy







ncl. et tr. solitarius

ncl. parasymp. n. X

BM

ncl. originis n. XII

22

FR

18

16

ncl. originis n. XI

tr.tecto-spinalis

tr. spino-c.post.

tr.cortico-spinalis lat.

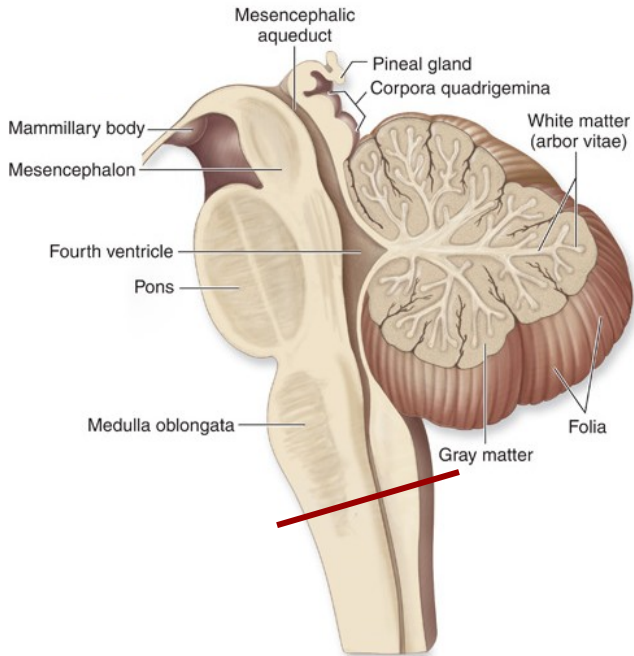
tr. spino-c.ant.

tr.rubro-spinalis

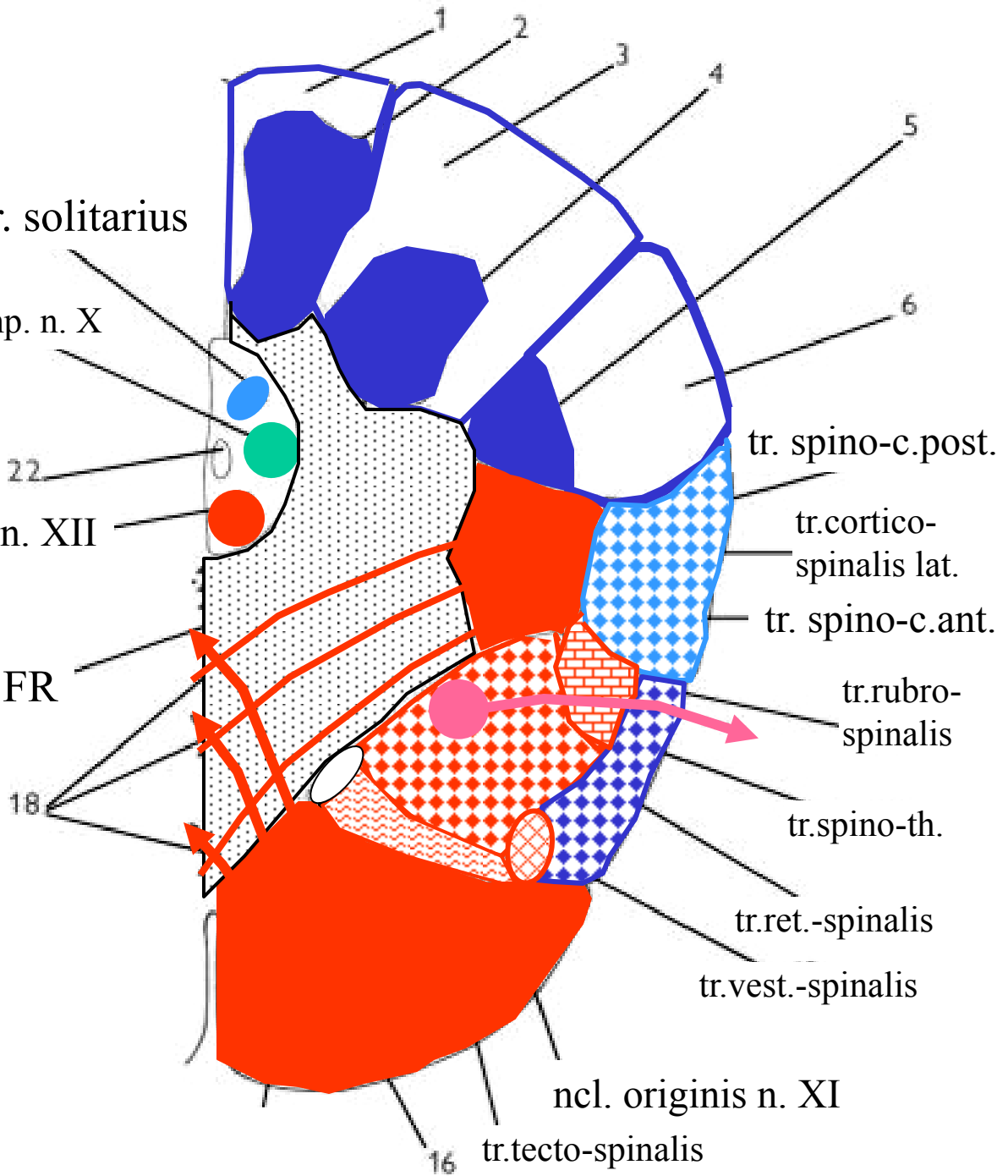
tr.spino-th.

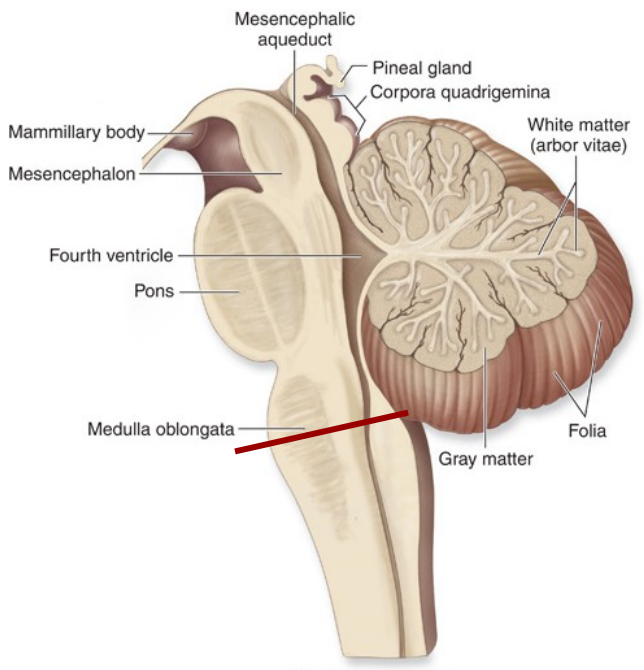
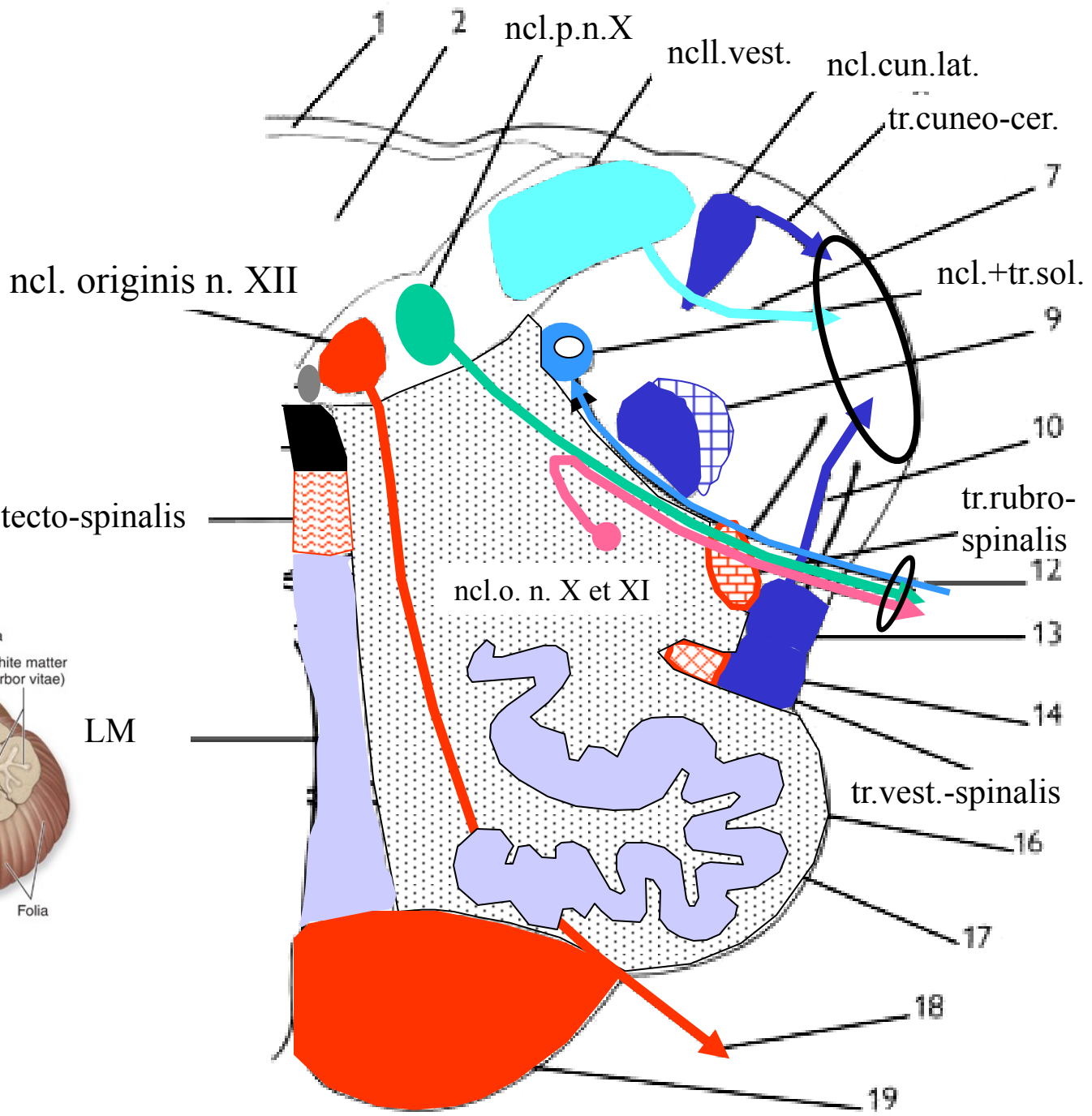
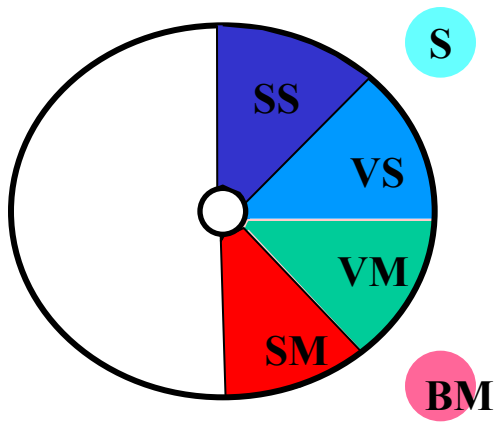
tr.ret.-spinalis

tr.vest.-spinalis



(a) Midsagittal section

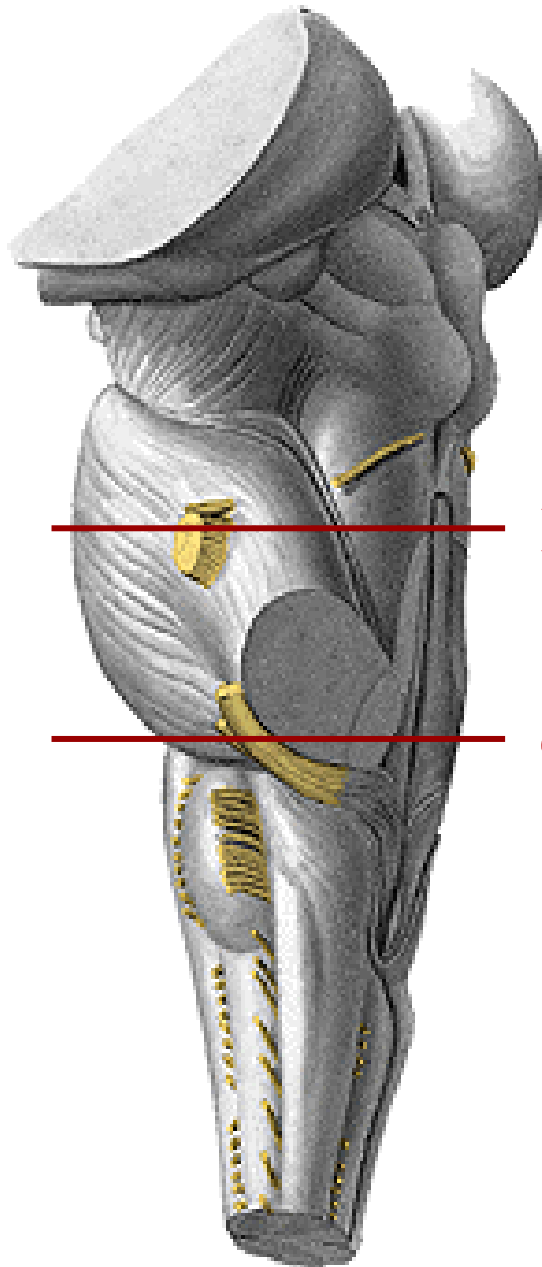




(a) Midsagittal section

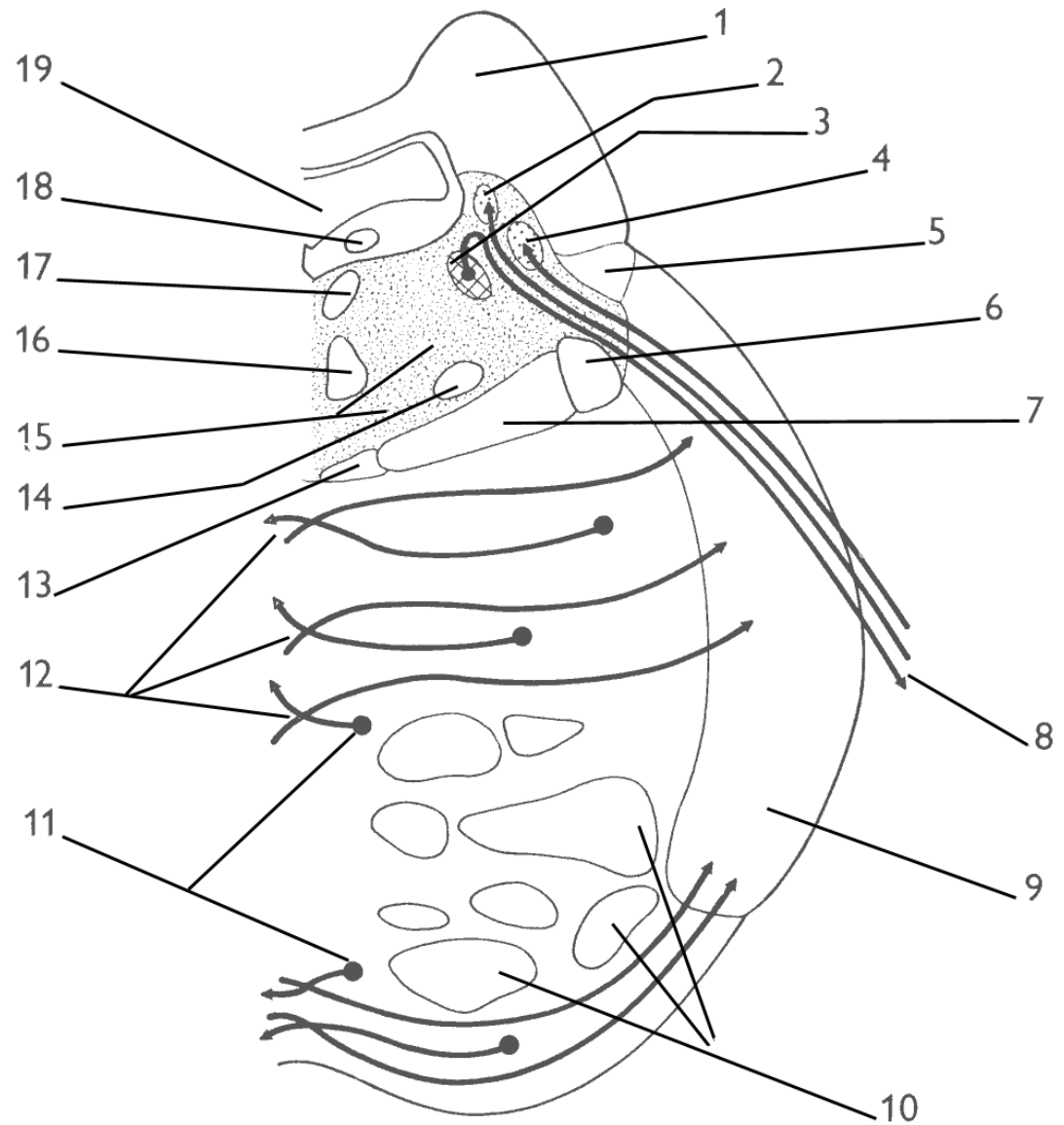
LM

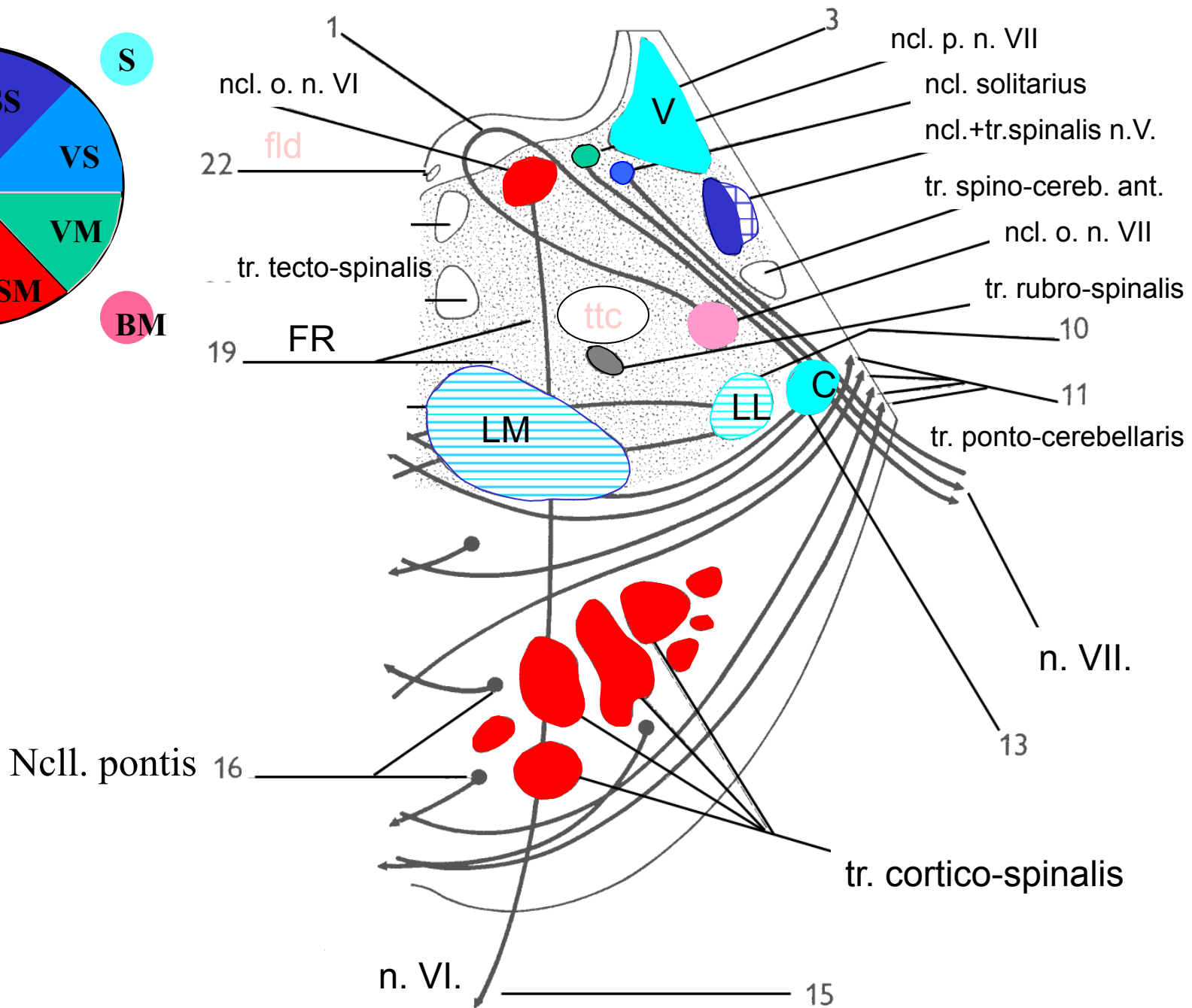
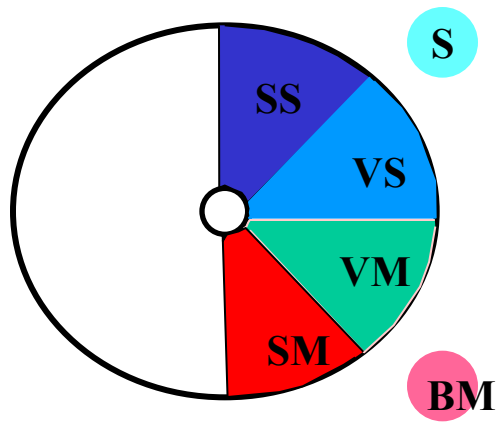
# Pons – representativní řezy

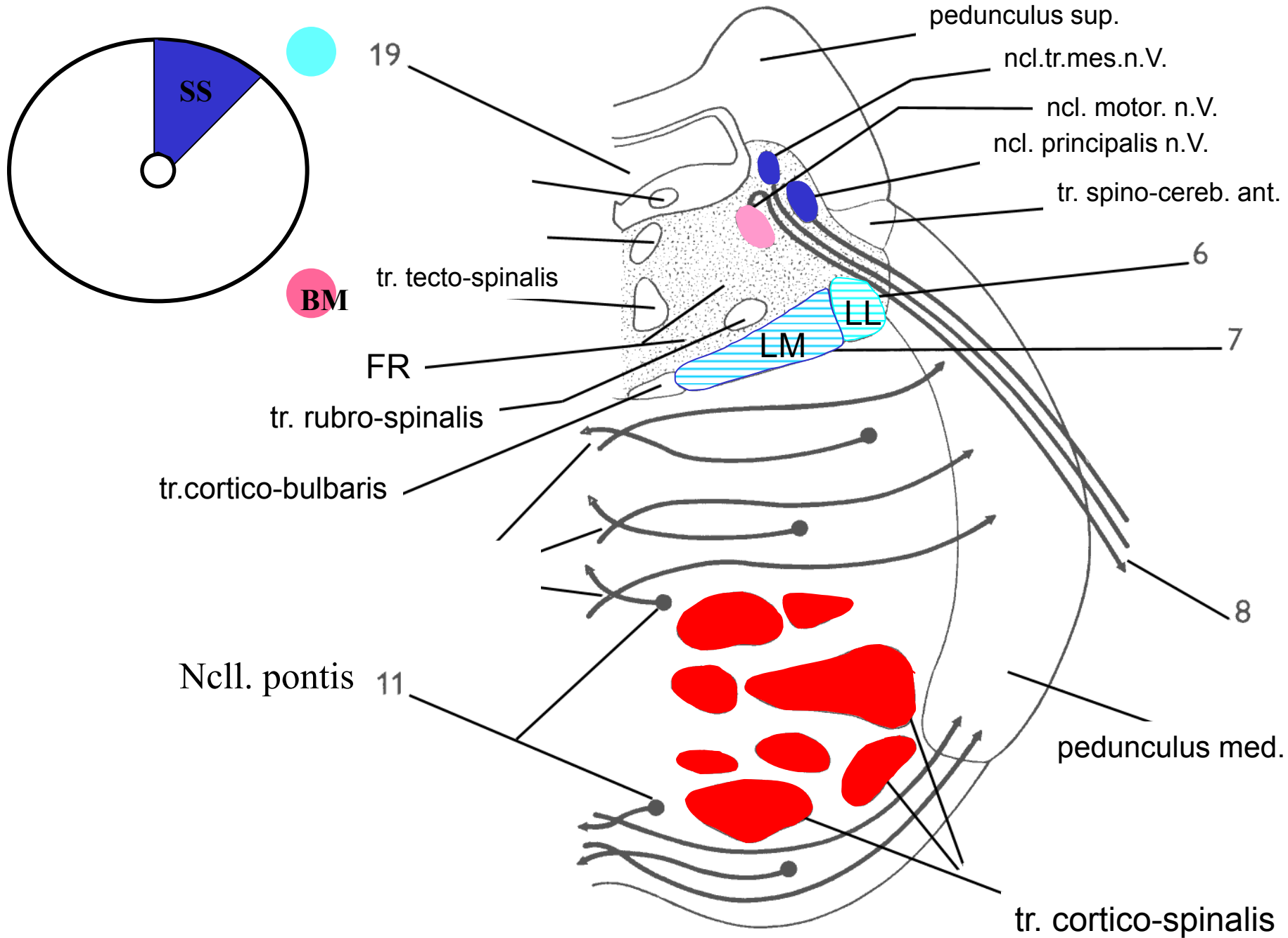


**R**

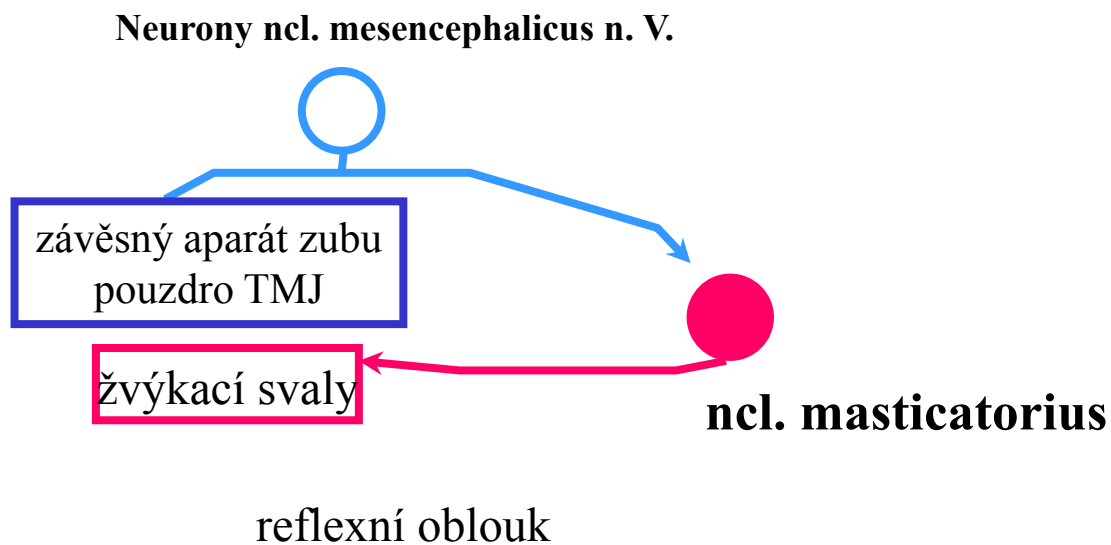
**C**



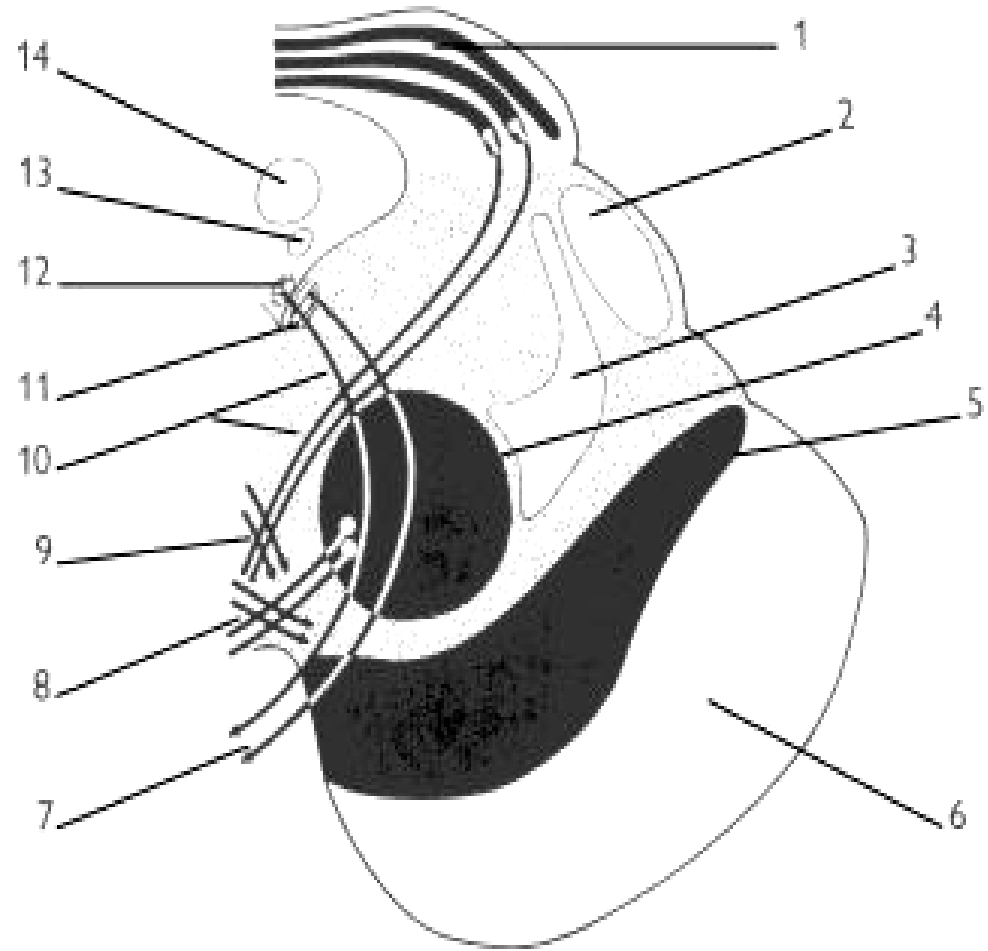
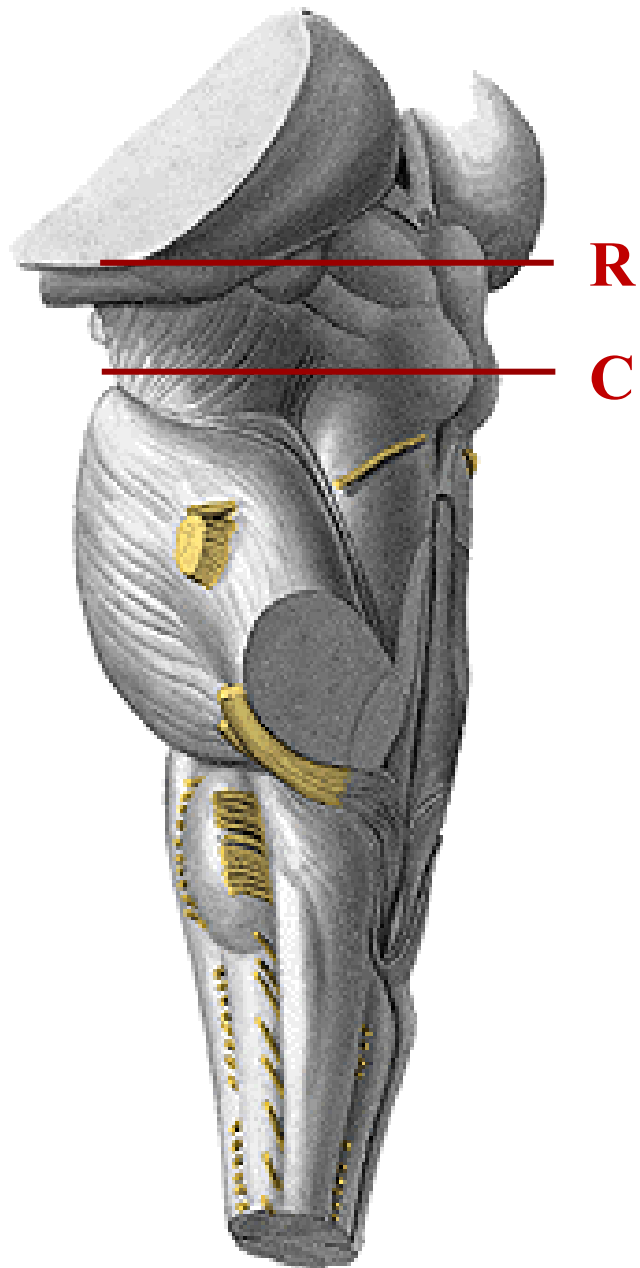


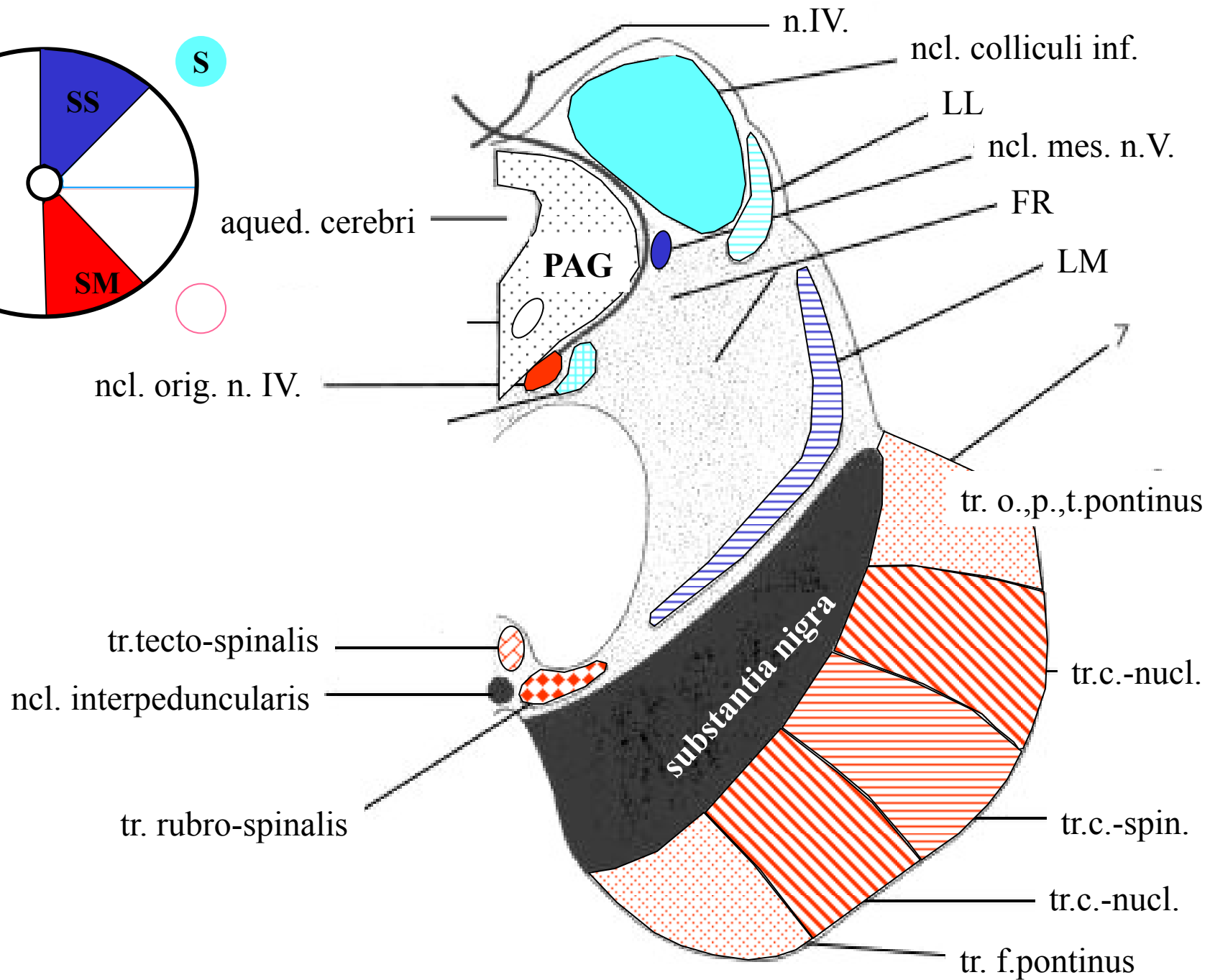
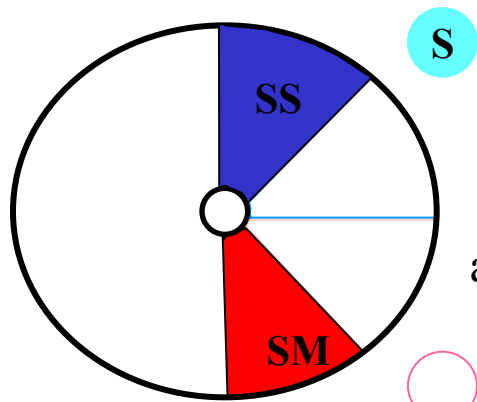


# Modulace aktivity motoneuronů ncl. masticatorius aferentací ze závěsného aparátu zubů a pouzdra TMJ

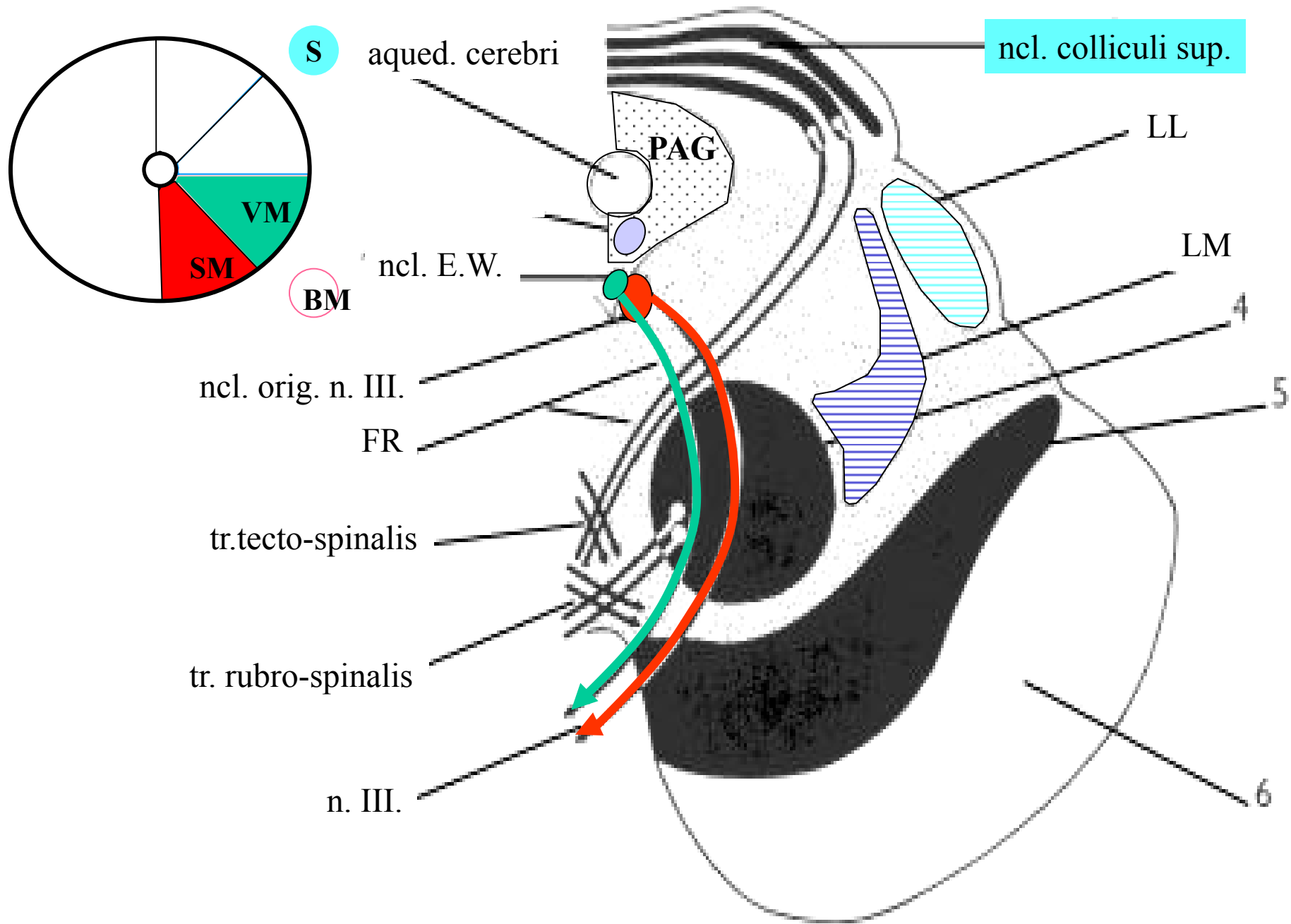


# Mesencephalon – representativní řezy









## **Nepodkročitelné minimum – mozkový kmen**

Zevní popis – oddíly mk a odstupy hl. nervů

Strukturální charakteristika jednotlivých oddílů mk

Základní struktury šedé hmoty – jádra hl. nervů, oliva, SN, ncl. ruber,  
FR (PAG)

Základní struktury bíle hmoty

- **aferentní** - tr. spinalis n. V.
  - tr. cuneatus et gracilis
  - tr. spino-thalamicus
  - tr. spino-cerebellaris
  - lemniscus lateralis (LL)
  - lemniscus medialis (LM)
- **eferentní** - tr. cortico-spinalis
  - tr. tecto-spinalis
  - tr. vestibulo-spinalis
  - tr. reticulo-spinalis
- crus cerebri