

Přehled žil a lymfatického systému

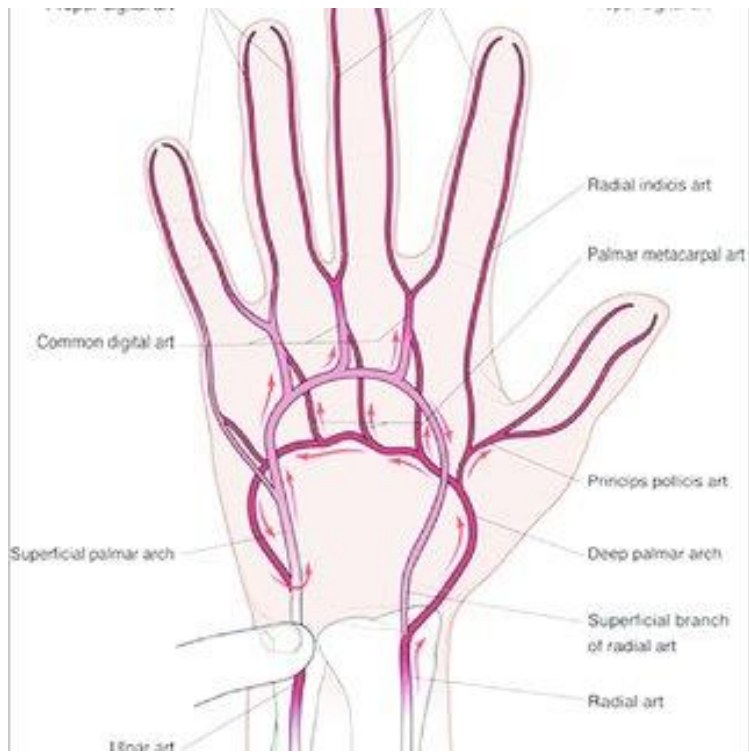
3. seminář, jaro 2022

A. canalis pterygoidei

- It usually arises from the [external carotid artery](#),^[1] but can arise from either the [internal](#) or [external carotid artery](#) or serve as an [anastomosis](#) between the two.^[2]

Artery of the pterygoid canal

The artery of the pterygoid canal can arise from the internal carotid artery, and not the maxillary, in up to 30% of cases.



Palmar Arterial Supply!

