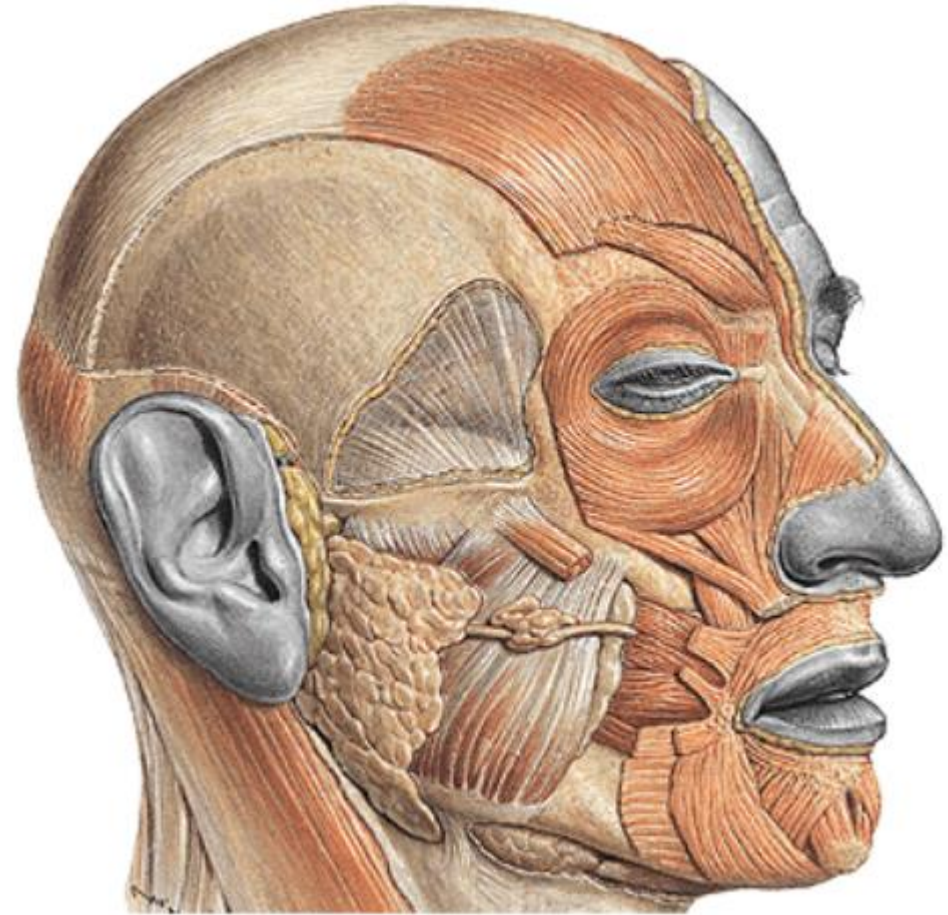


Fossa temporalis, fossa  
infratemporalis, fossa  
pterygopalatina

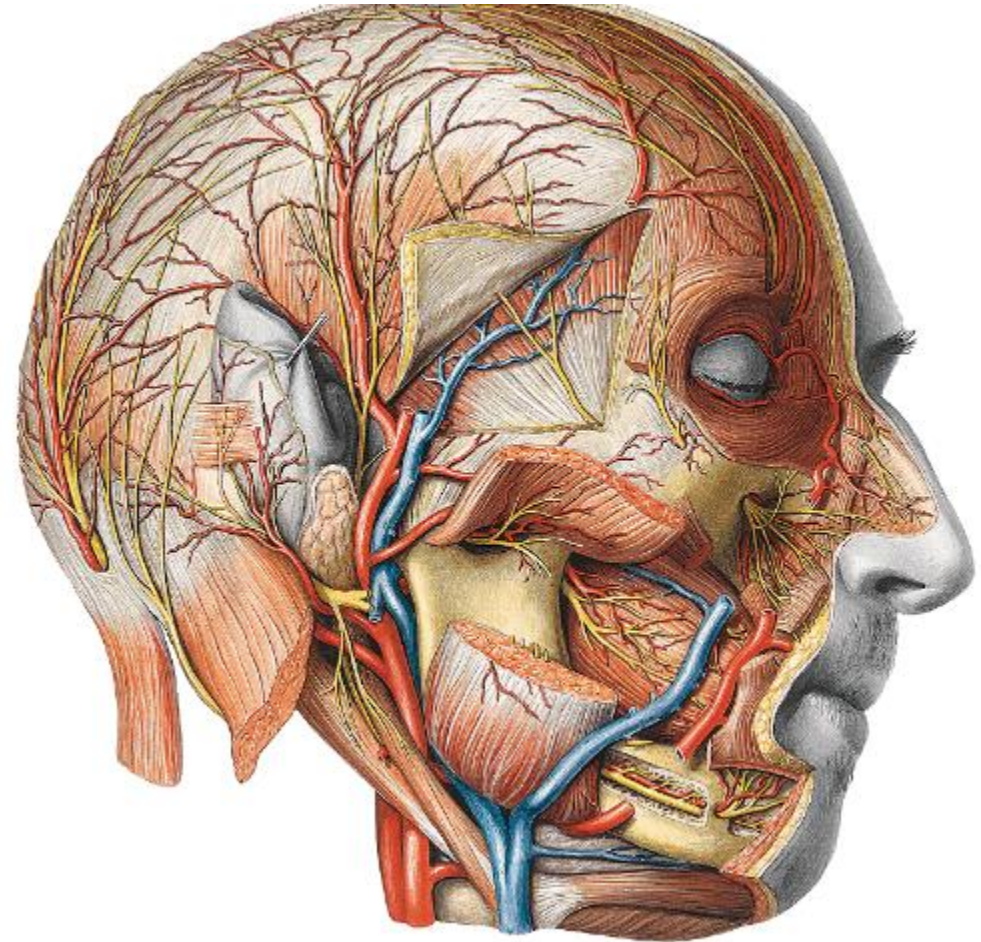
# Fossa temporalis

- Ohraničení:  
linea temporalis sup.,  
arcus zygomaticus

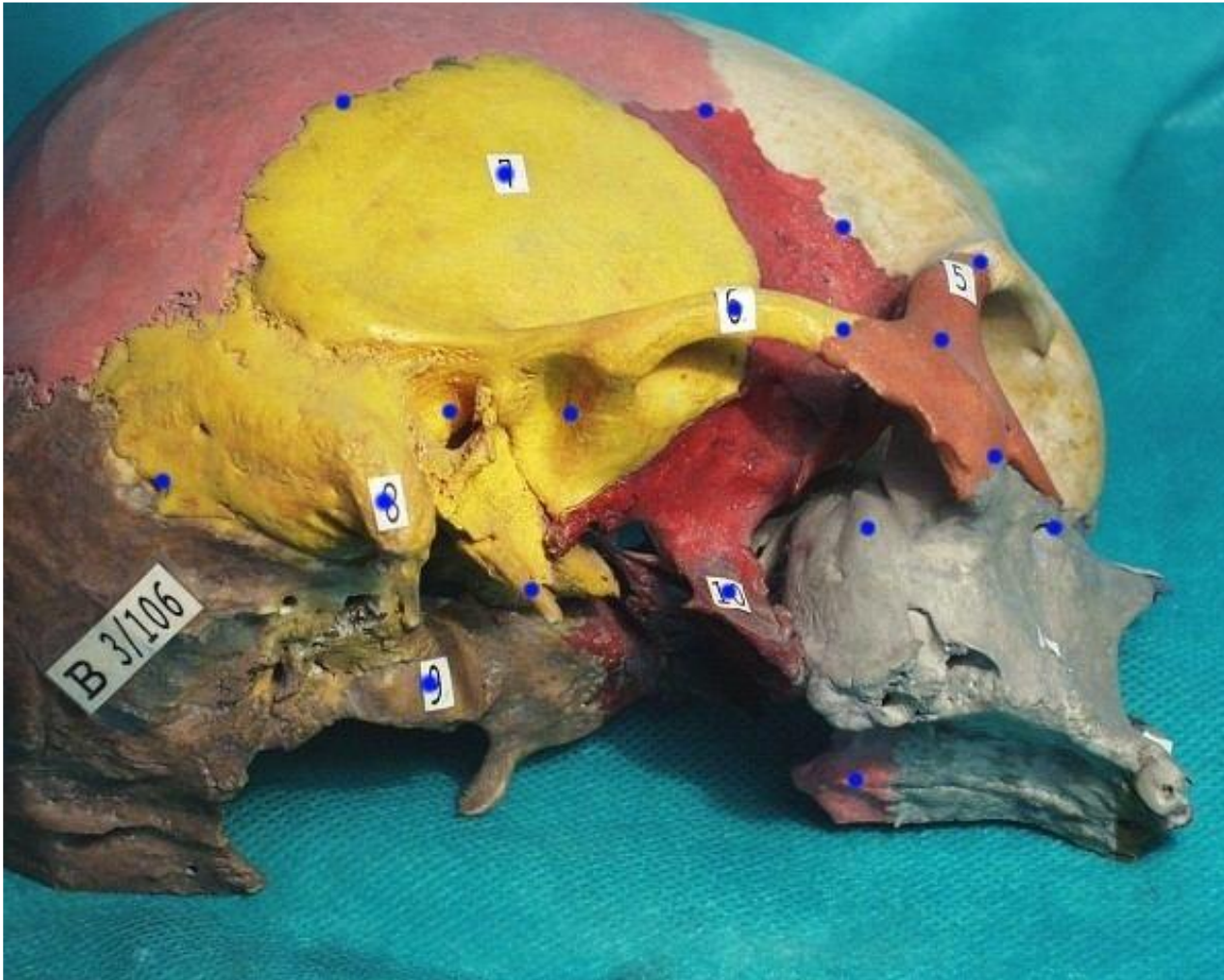


# Fossa temporalis - obsah

- kůže
- n. auricularis magnus
- m. temporoparietalis (n.VII.)
- a., v. temporalis spf. (v. retromandibularis)
- n. auriculotemporalis
- fascia temporalis (dva listy)
- m. temporalis
- a.,v., n. temporalis prof.



# Fossa infratemporalis



## Hranice:

Horní: crista infratemporalis  
alae majoris osis

sphenoidalis

Přední: facies infratemporalis  
corporis maxillae

Laterální: ramus mandibulae

Mediální: lamina lat. proc.

Pterygoidei

Dorsální: chybí, styloidní  
septum

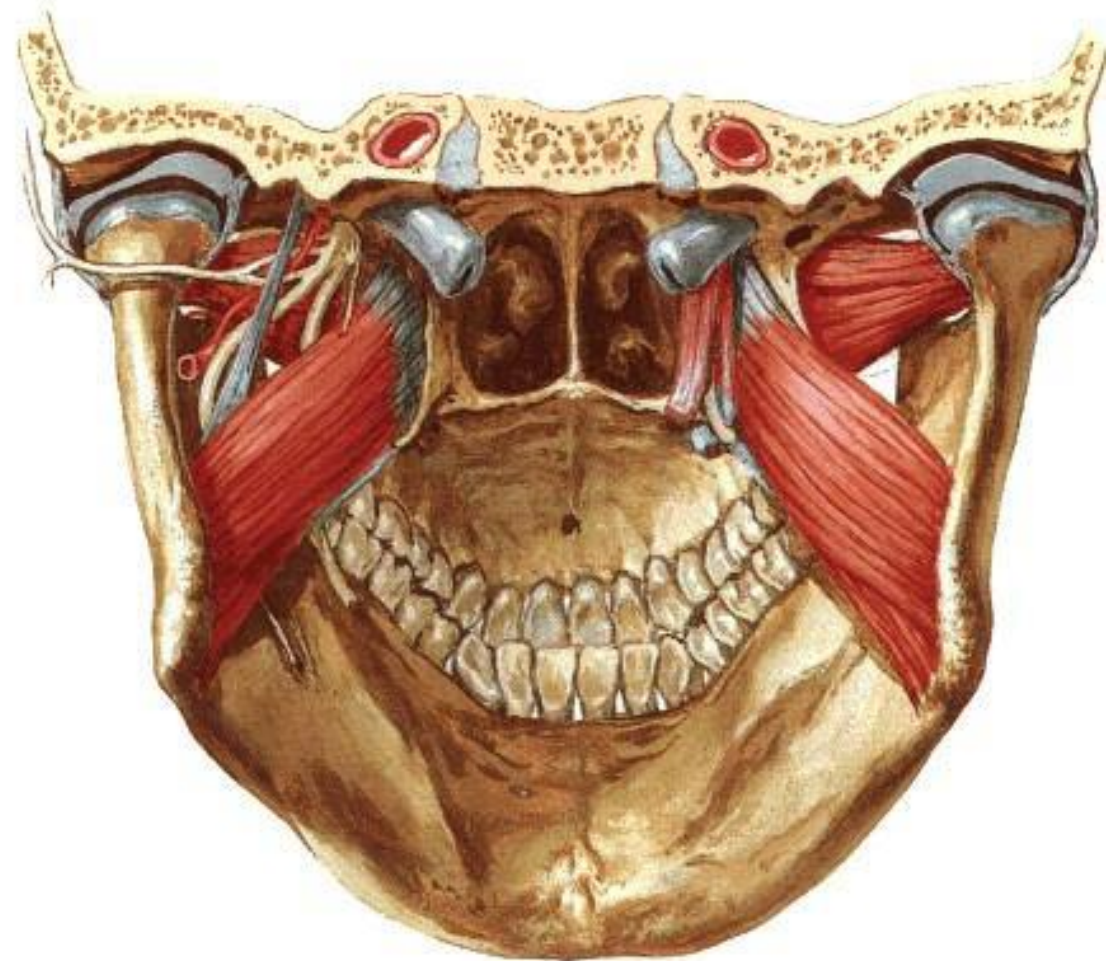
# Fossa infratemporalis - obsah

## **mm. pterygoidei**

### **a.maxillaris**

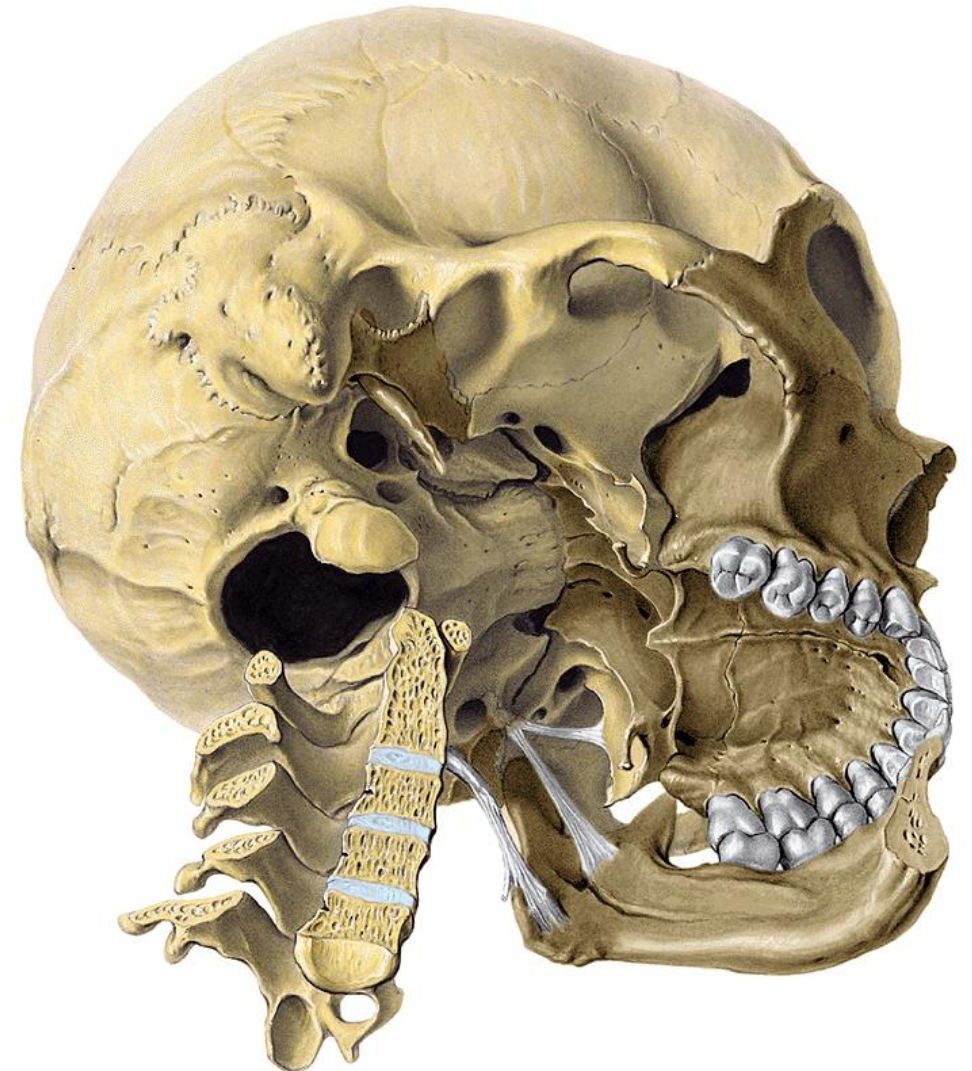
Větve **n.mandibularis** (větve k žvýkacím svalům, k m. tensor tympani a veli palatini, n. buccalis, n. auriculotemporalis, n. lingualis, n. alveolaris inf.)

### **Plexus pterygoideus**



# Fossa infratemporalis průchody

- v.ophthalmica inf. (fissura orbitalis inf.)
- n.mandibularis (foramen ovale)
- a.meningea media (foramen spinosum)
- n.alveolaris inf. (canalis mandibulae)
- n.mylohyoideus (sulcus mylohyoideus)



# A. Maxillaris ve fossa infratemporalis

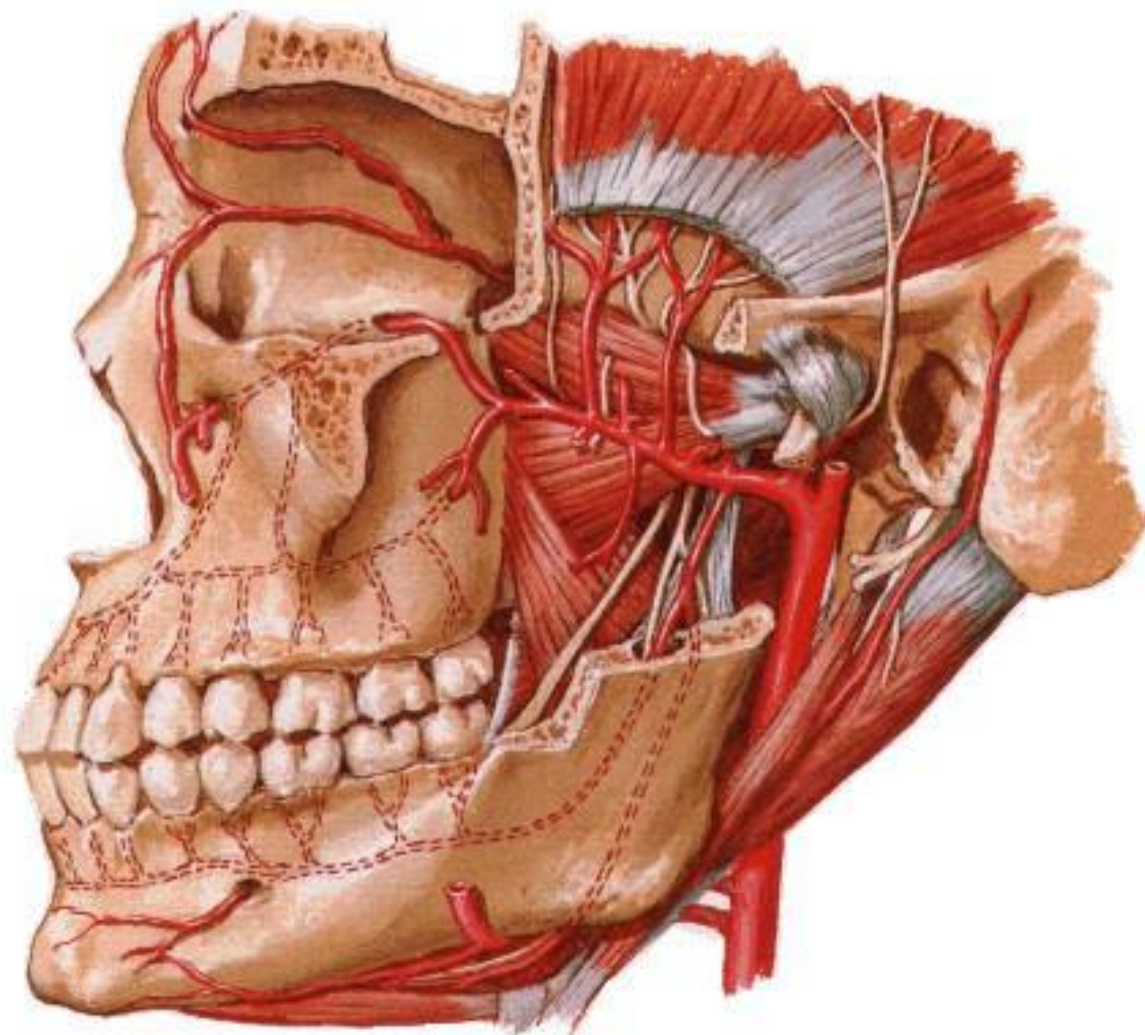
## Pars pterygoidea

arteria masseterica

arteriae temporales prof.

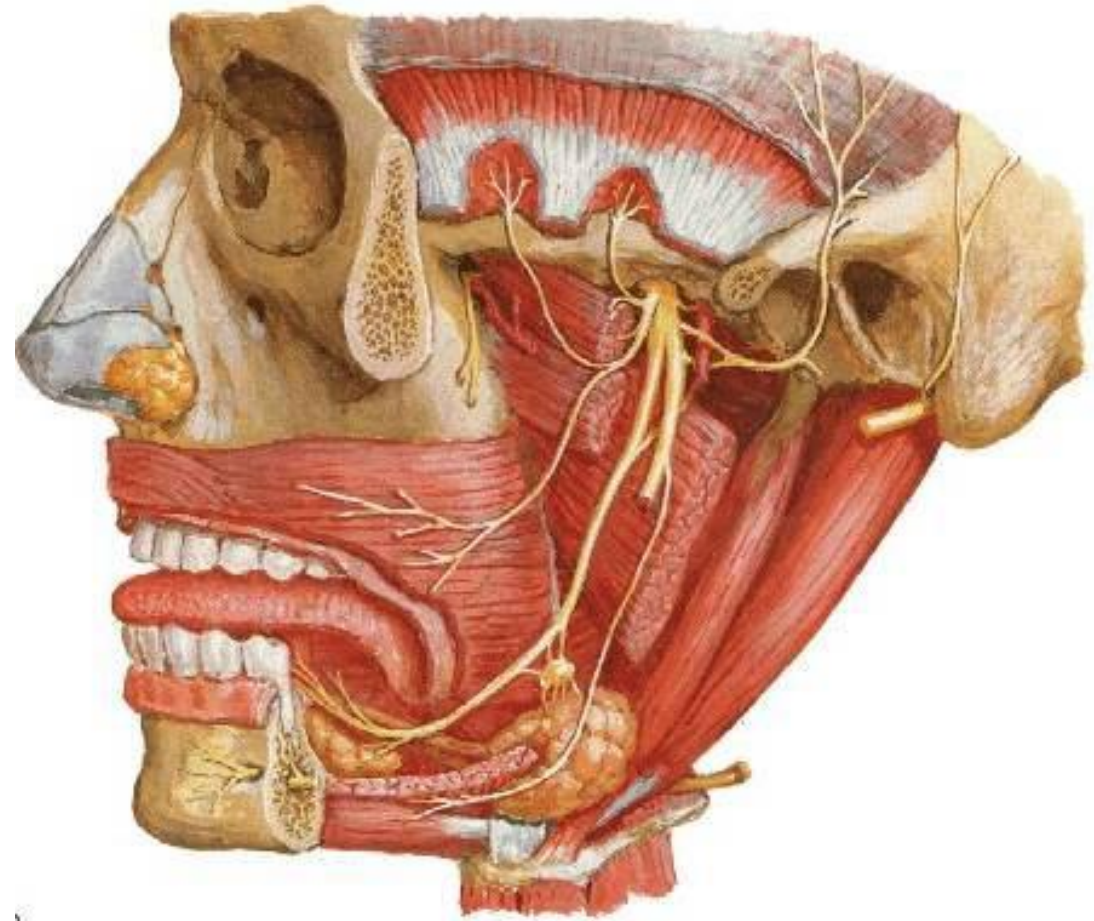
rr. pterygoidei

arteria buccalis



# Větve n. mandibularis ve fossa infratemporalis

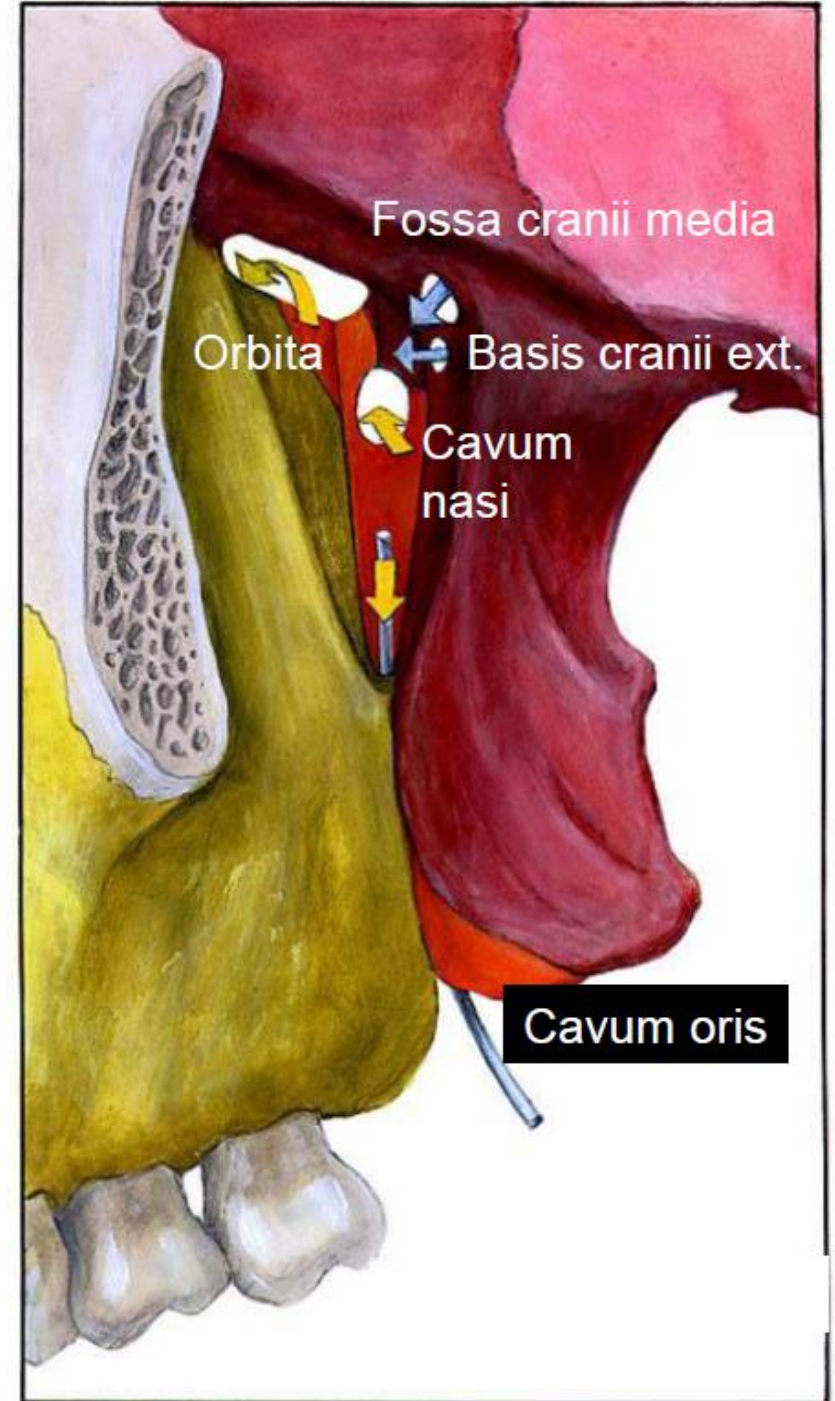
- **N. mandibularis**
- **N. buccalis**
- **N. lingualis**
- **N. alveolaris inf**
- **n. mentalis**
- **R. mylohyoideus**
- **N. auriculotemporalis**

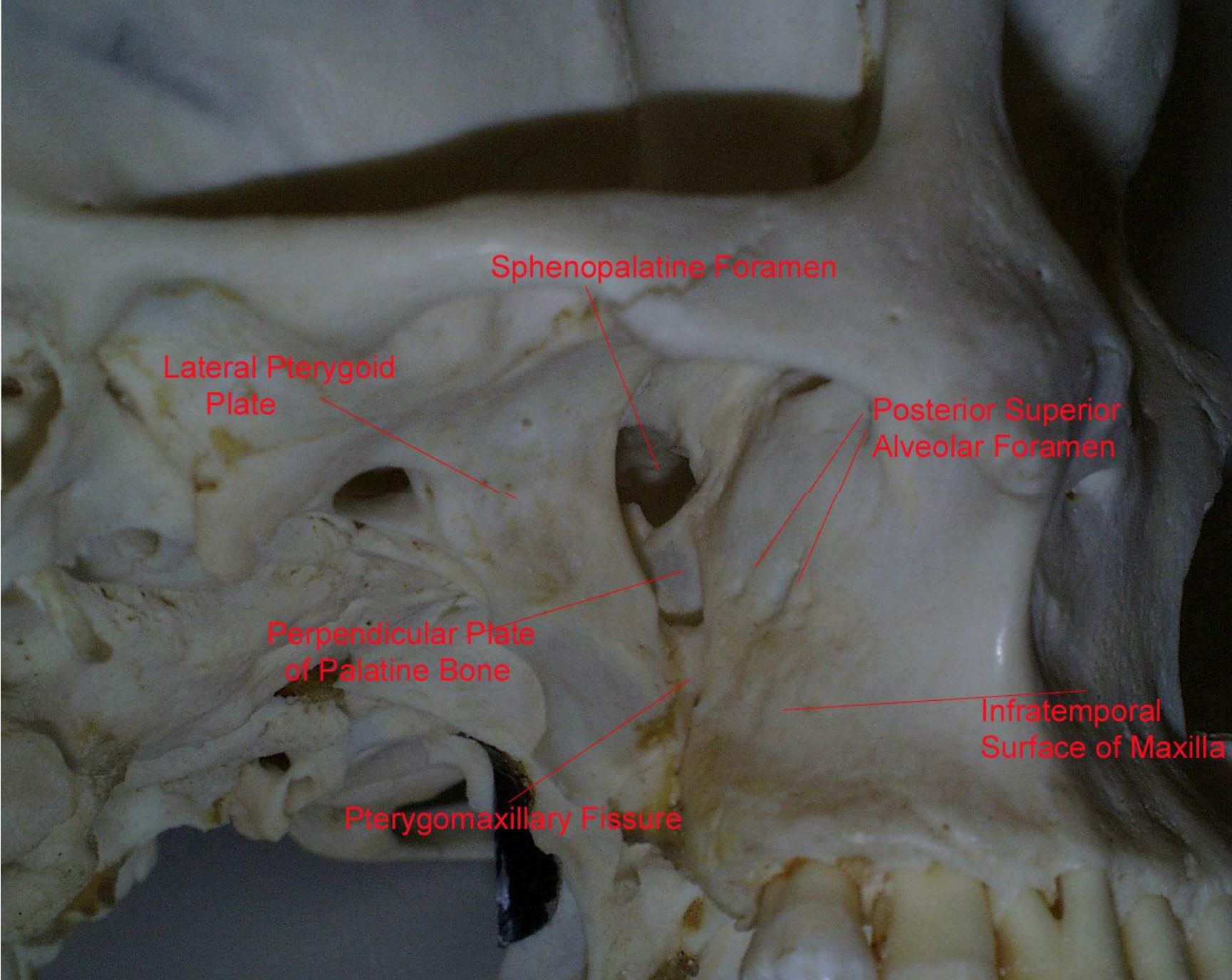




# Fossa pterygopalatina

- Horní stěna
  - Facies maxillaris alae majoris ossis sphenoidalis
  - Foramen rotundum (fossa cranii media)
  - Fissura orbitalis inferior (orbita)
- Mediální stěna
  - lamina perpendicularis ossis palatini
  - Foramen sphenopalatinum (cavum nasi osseum)
- Ventrální stěna
  - tuber maxillae (foraminaalveolaria)
- Dorzální stěna
  - Processus pterygoideus ossis sphenoidalis
  - canalis pterygoideus (basis cranii externa)
- Kaudálně:
  - Canalis palatinus major (cavum oris)





Sphenopalatine Foramen

Lateral Pterygoid Plate

Posterior Superior Alveolar Foramen

Perpendicular Plate of Palatine Bone

Infratemporal Surface of Maxilla

Pterygomaxillary Fissure

# Větve a.maxillaris - pars pterygopalatina

## Pars pterygopalatina

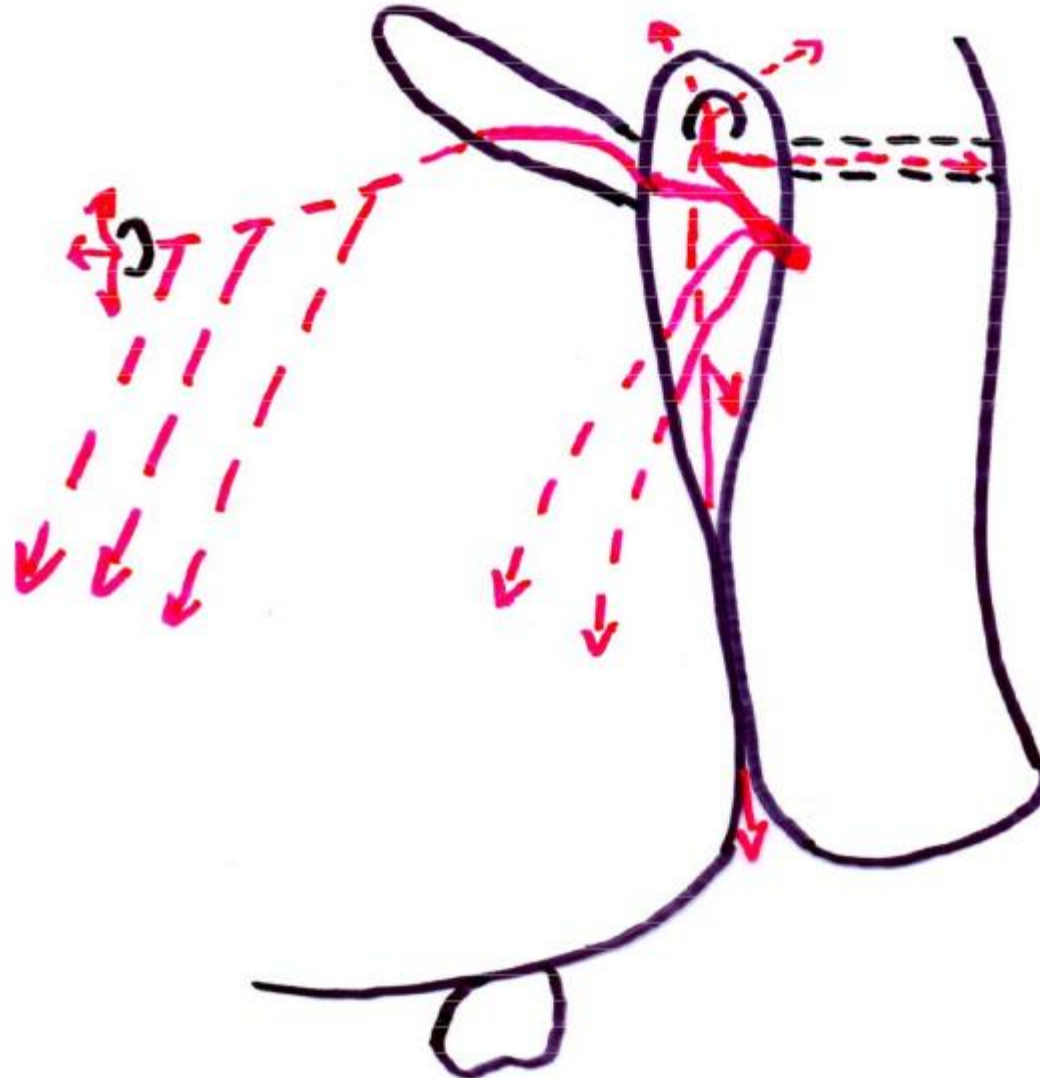
a. infraorbitalis

a. alveolaris sup. post.

a. palatina descendens

a. canalis pterygoidei

a. sphenopalatina



# Pohled na fossa pterygopalatina z boku (průchody nervů)

