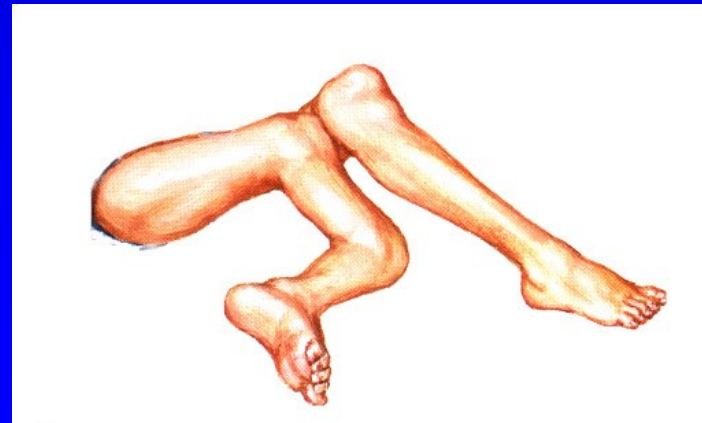


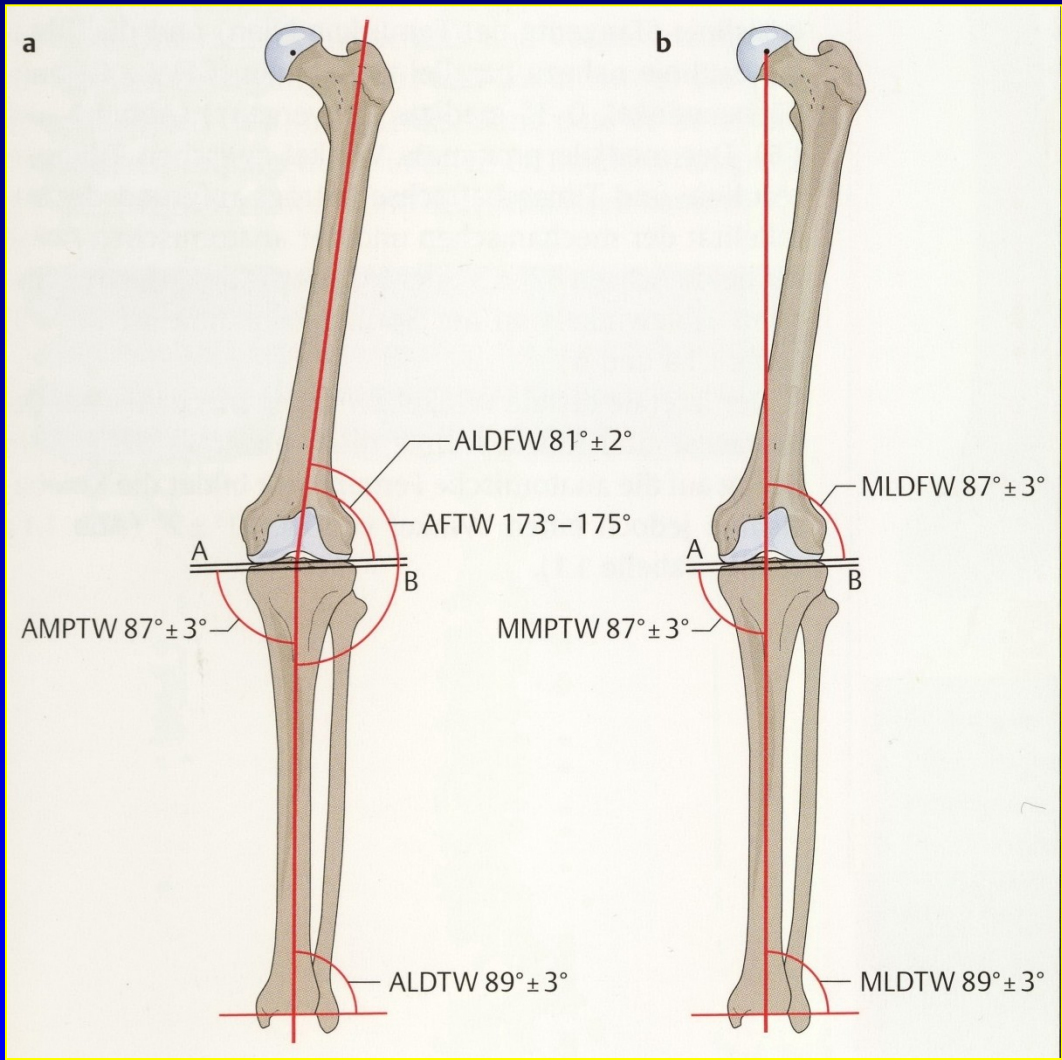
Axial deformities of lower limb

Rozkydal Z.

Causes

Congenital
Fractures
infections
Neurological diseases
Endocrine diseases
Metabolic diseases
Osteopathies





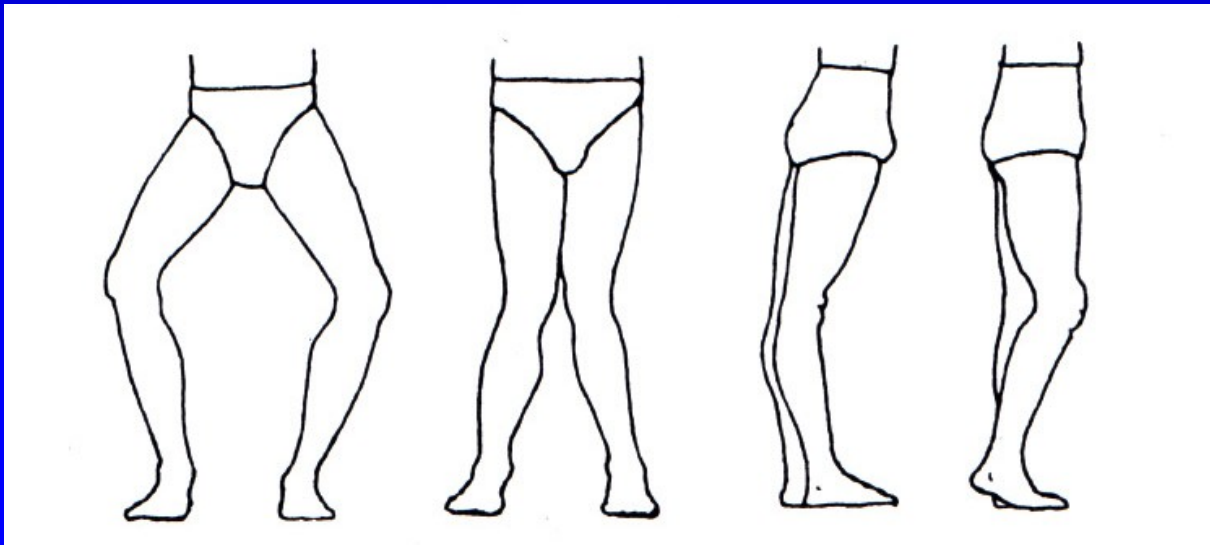
Basic items

Valgus - distal part goes laterally

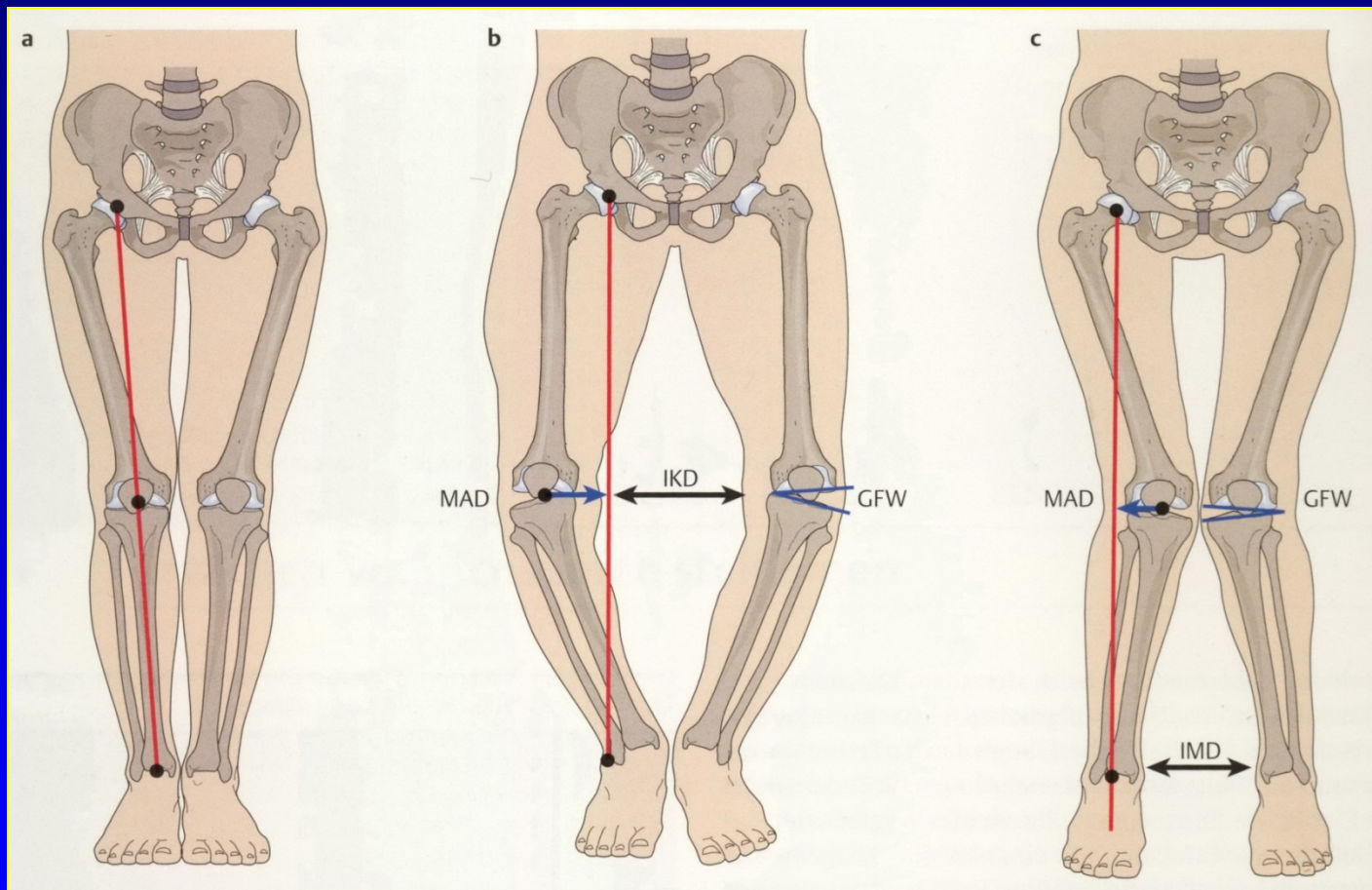
Varus - distal part goes medially

Recurvation - bowing dorsally

Antecurvation - bowing anteriorly



Mikuliczova linie



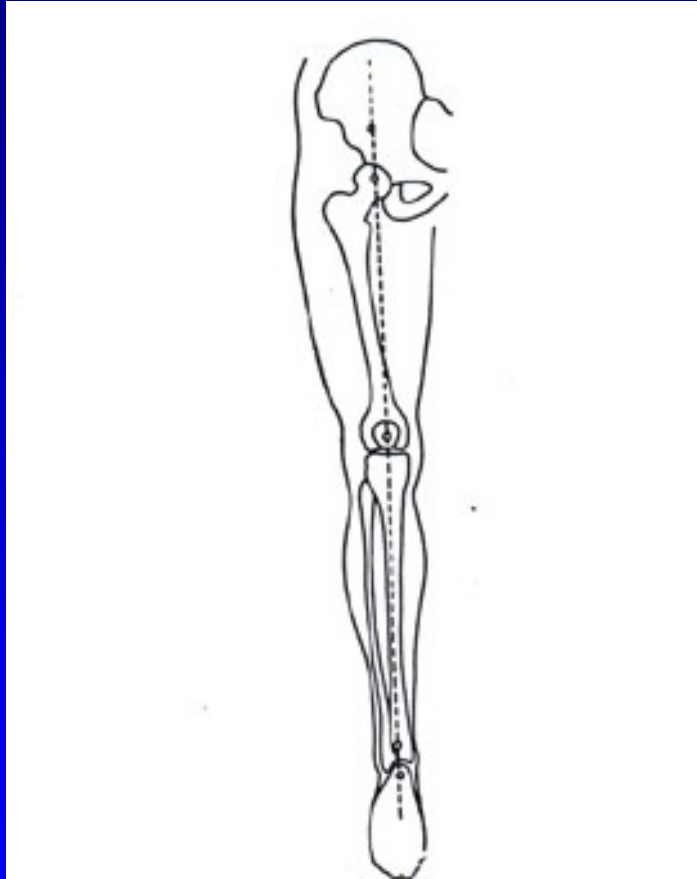
a) Norma

b) Varus

c) Valgus

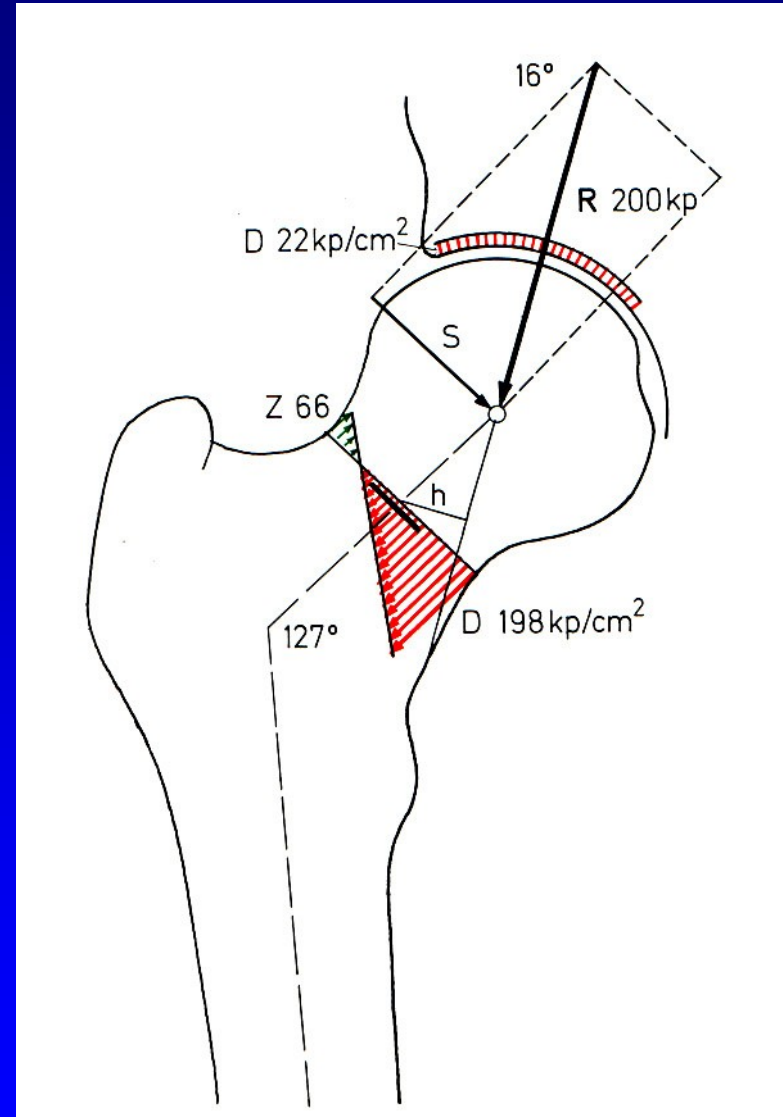
Podle Lobenhoffer, Agneskircher, Galla: Kneegelenknahe Osteotomien, Thieme, 2007

Mikulicz line

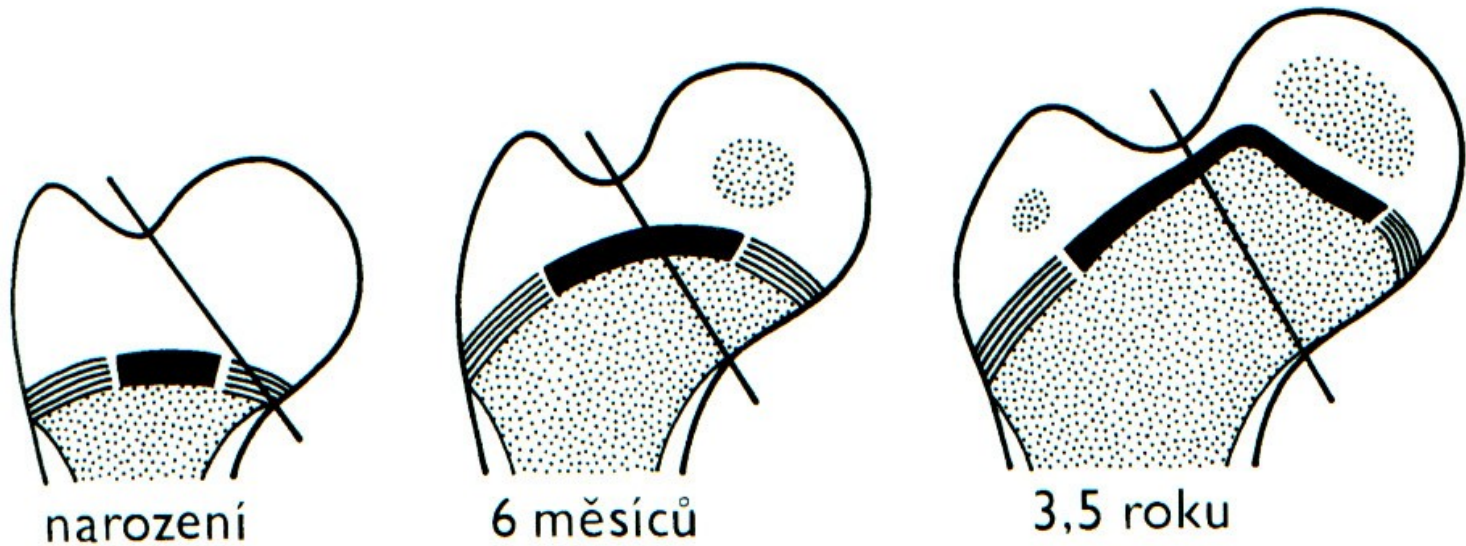


CCD angle

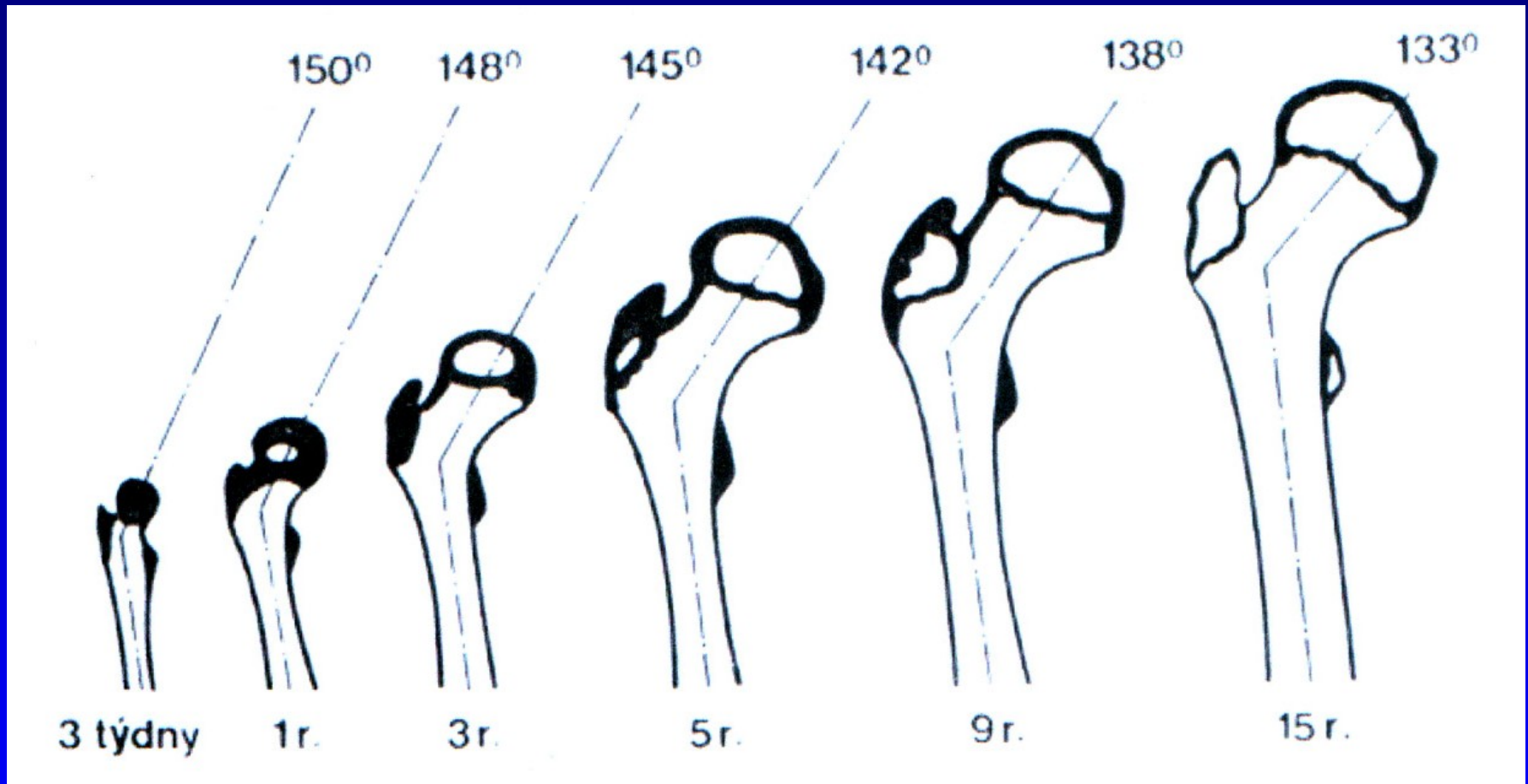
Normal 125 \pm 5



Chondroepiphysis of proximal femur



Changes of CCD angle



Change of anteversion of the femur: birth 40

puberty 10-15

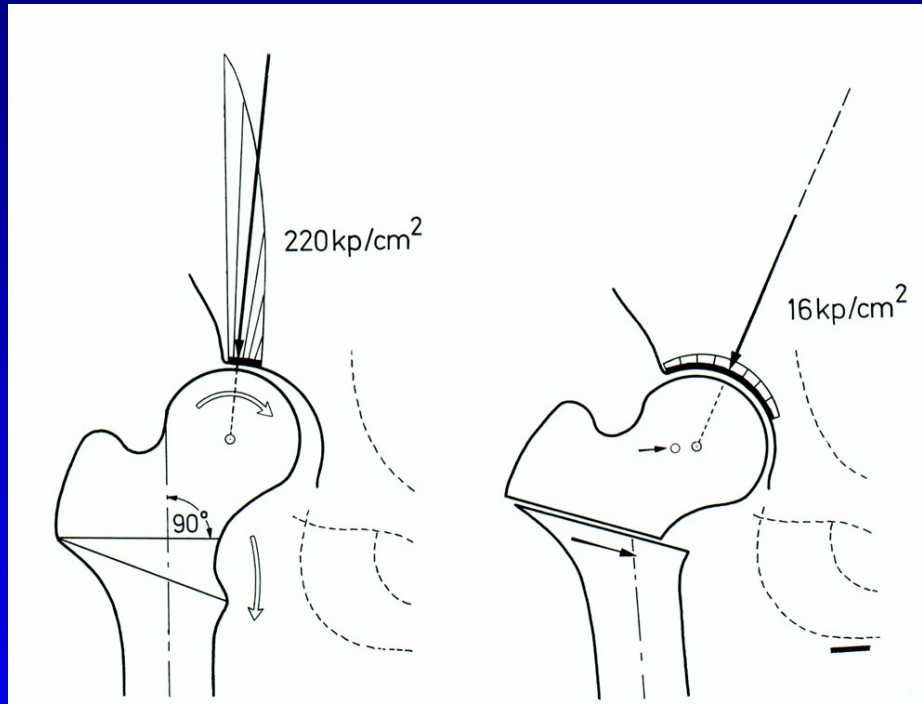
adult 11

Coxa valga

- Coxa valga
- Coxa valga subluxans
- Coxa valga anteverta
- Coxa valga in cerebral palsy



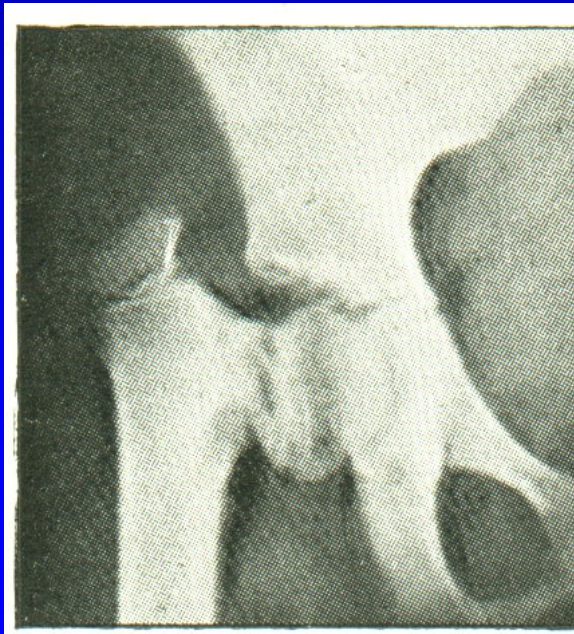
Pauwels osteotomy



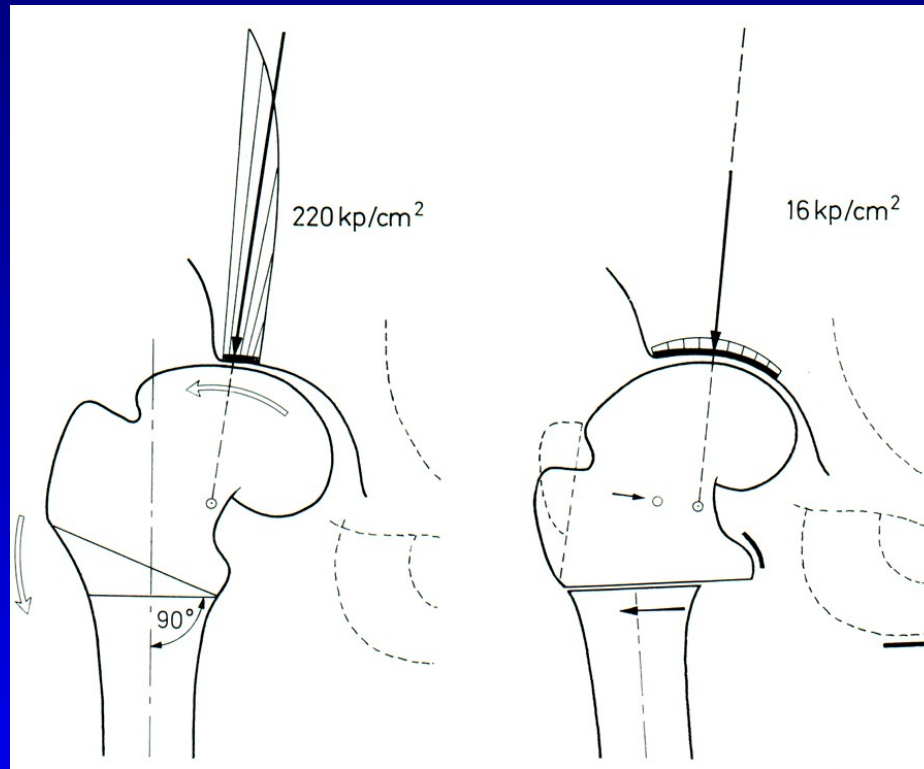
Varus osteotomy

Coxa vara

- Coxa vara congenita
- Coxa vara adolescentium
- Coxa vara posttraumatica
- Coxa vara after infection
- Coxa vara in osteopathy

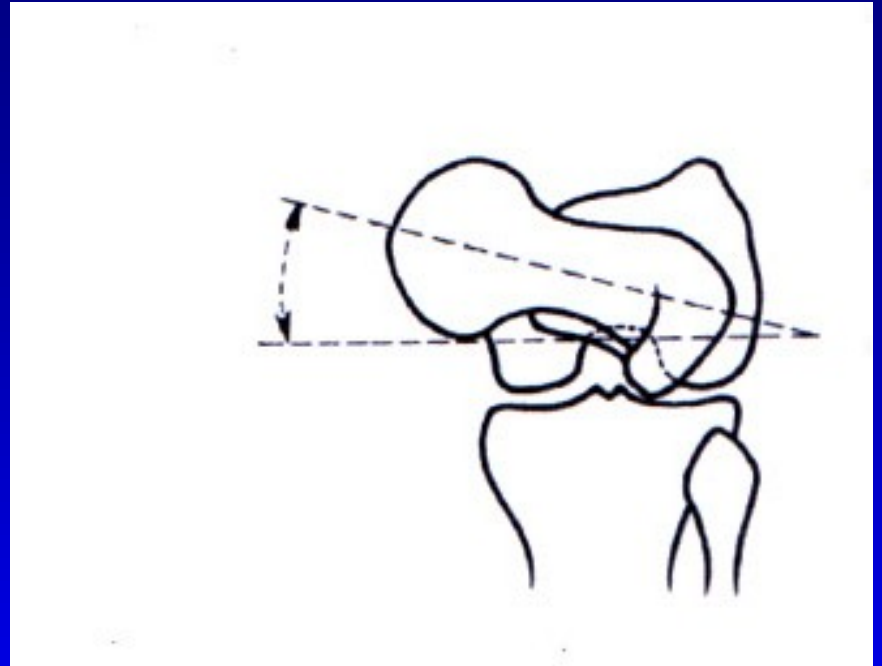
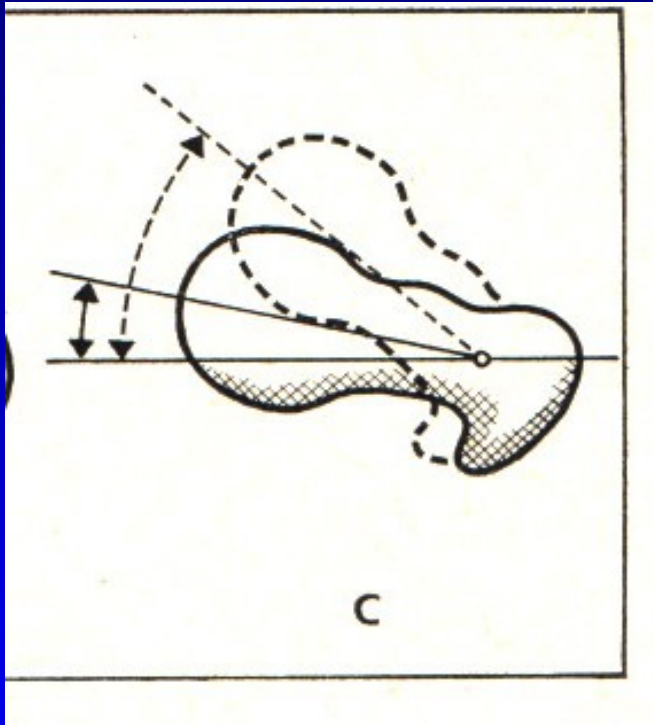


Pauwels osteotomy



Valgus osteotomy

Anteversion



Deformity in femur

Varus

Valgus

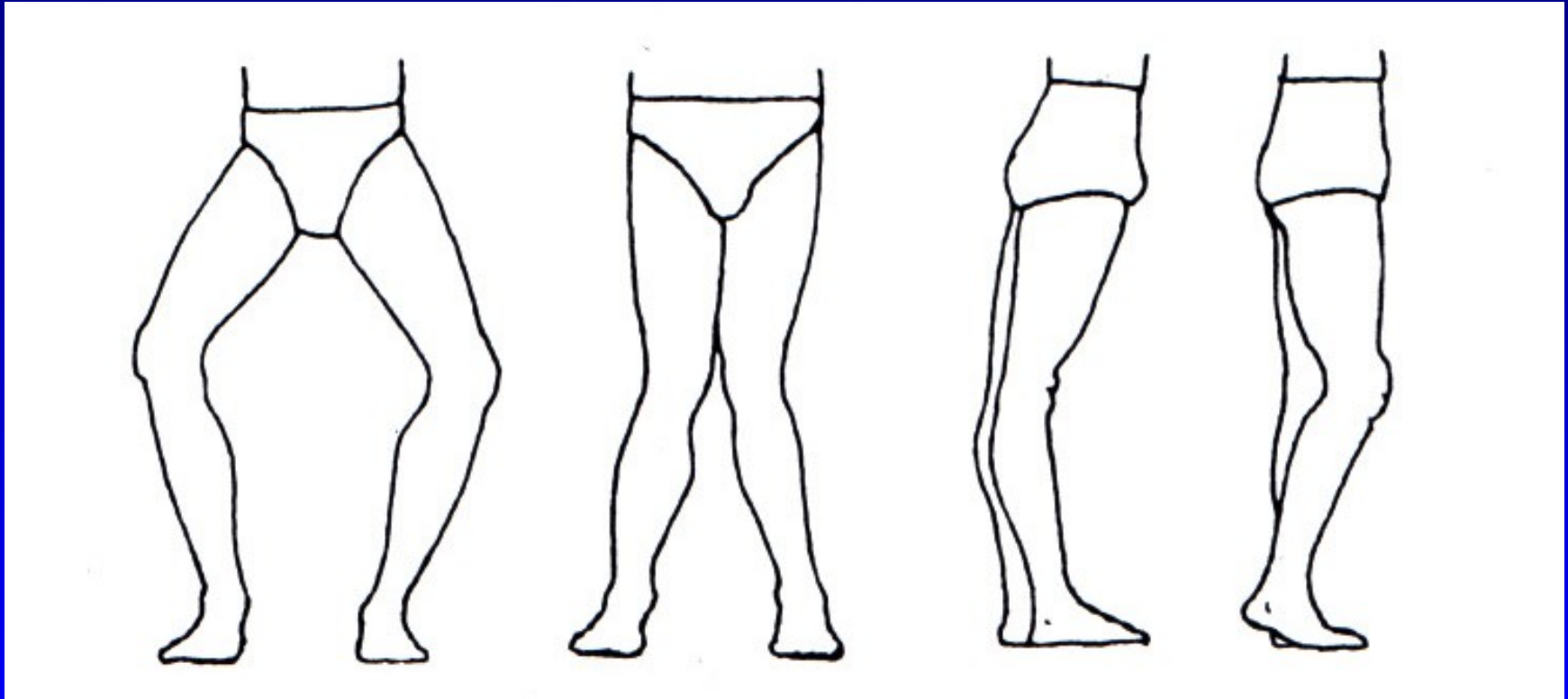
Antecurvation

Recurvation



Paget disease

The knee



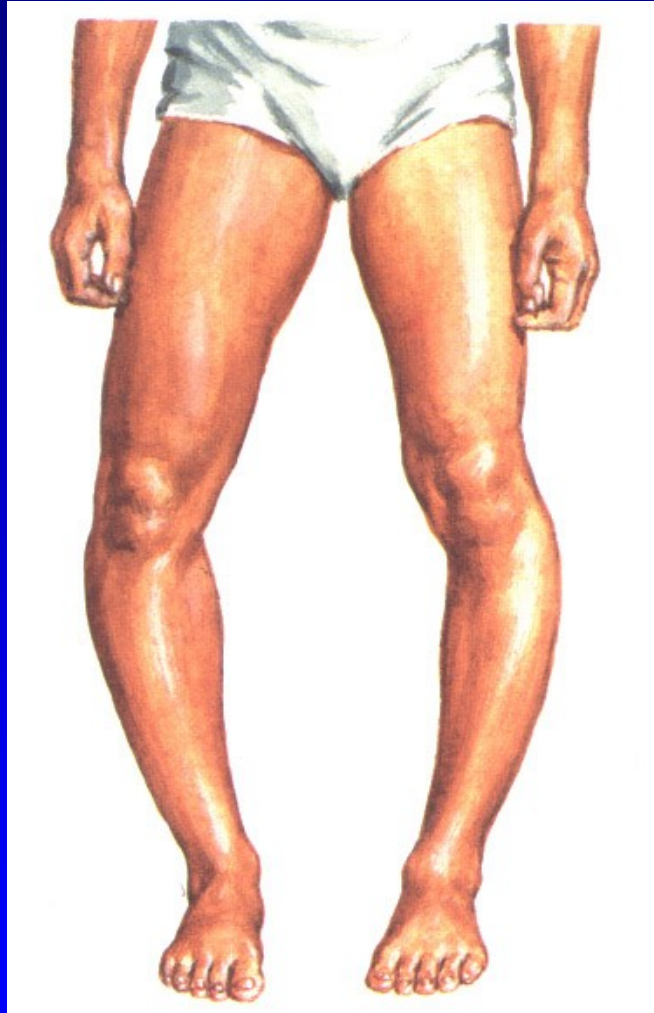
Genu varum

genu valgum

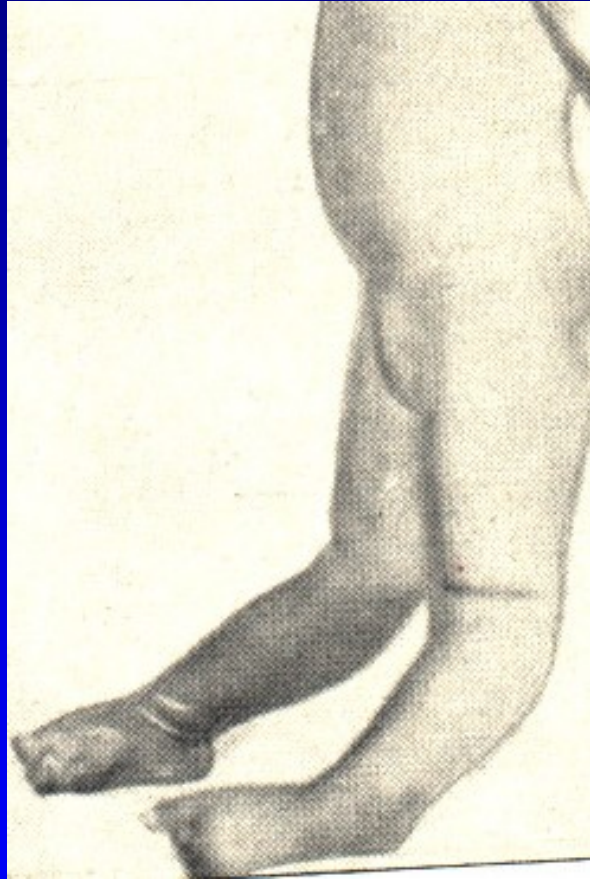
genu recurvatum

genu flectum

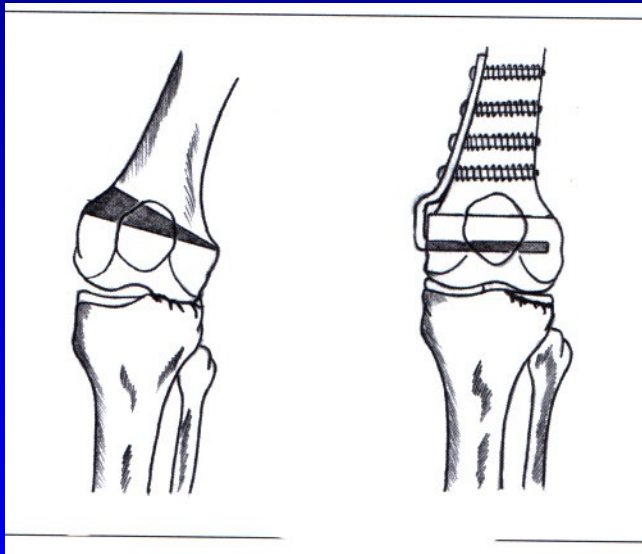
Tibia vara Blount



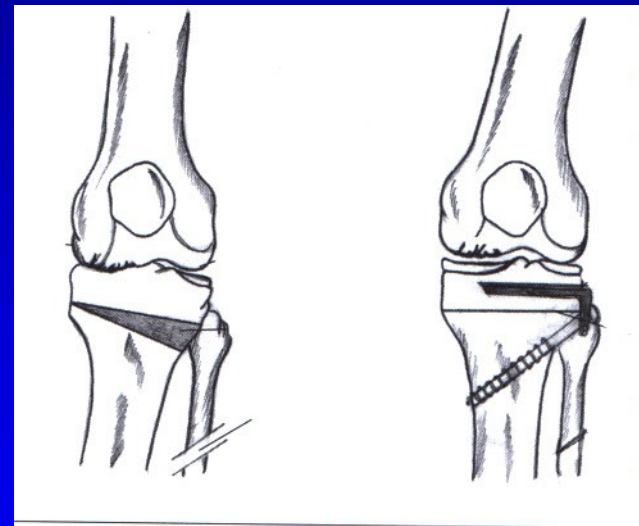
Genu recurvatum congenitum



Osteoarthritis of the knee

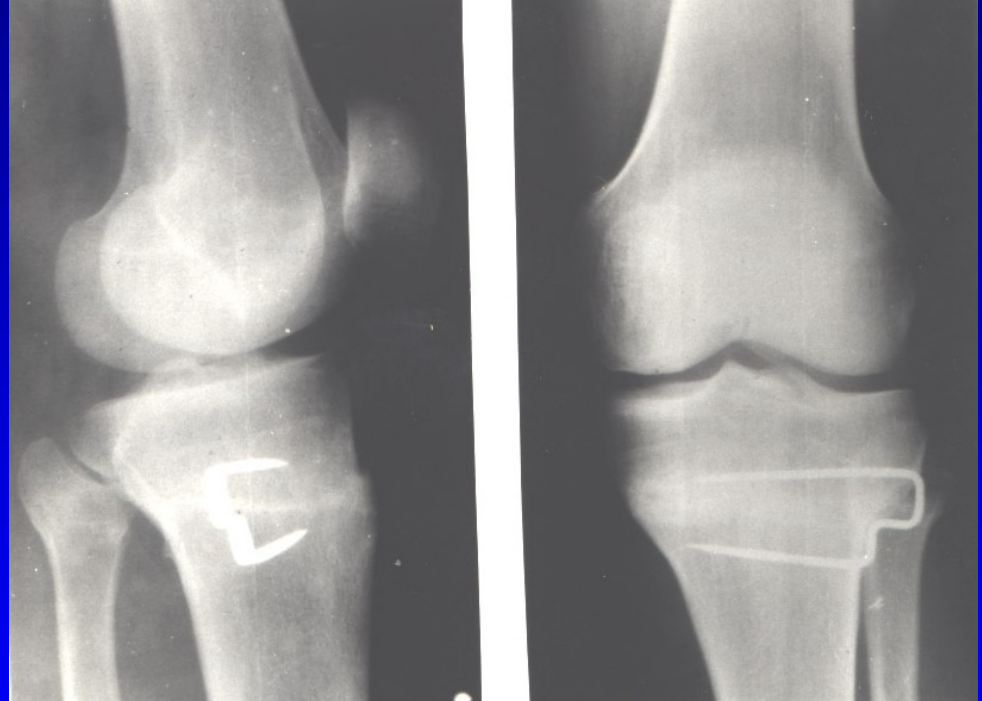
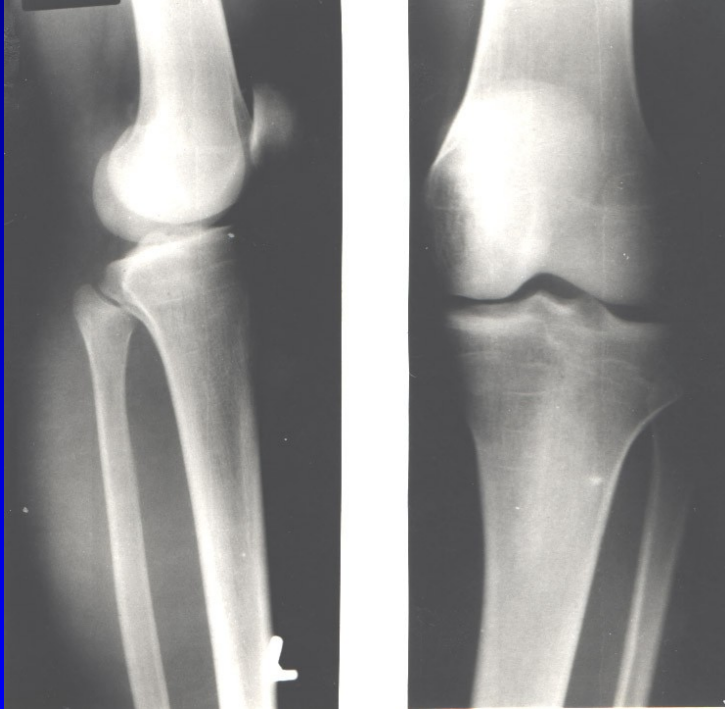


Obr. Genu valgum
Varus osteotomy



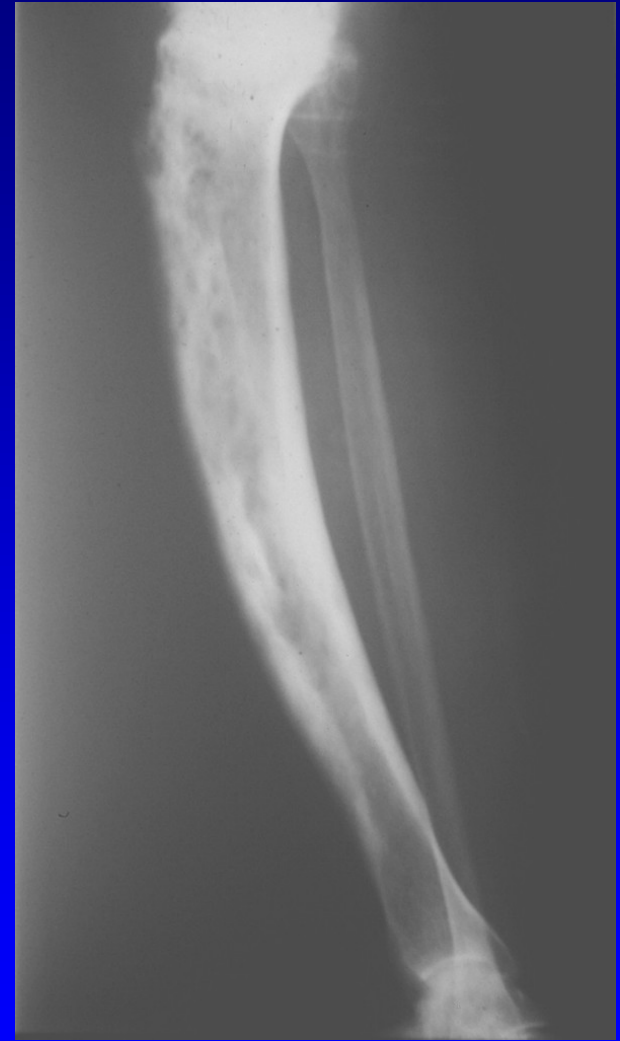
Obr. Genu varum
Valgus osteotomy

Coventry valgus osteotomy



Deformity of the leg

- Crus varum
- Crus valgum
- Crus antecurvatum
- Crus recurvatum
- External rotation deformity



Paget disease