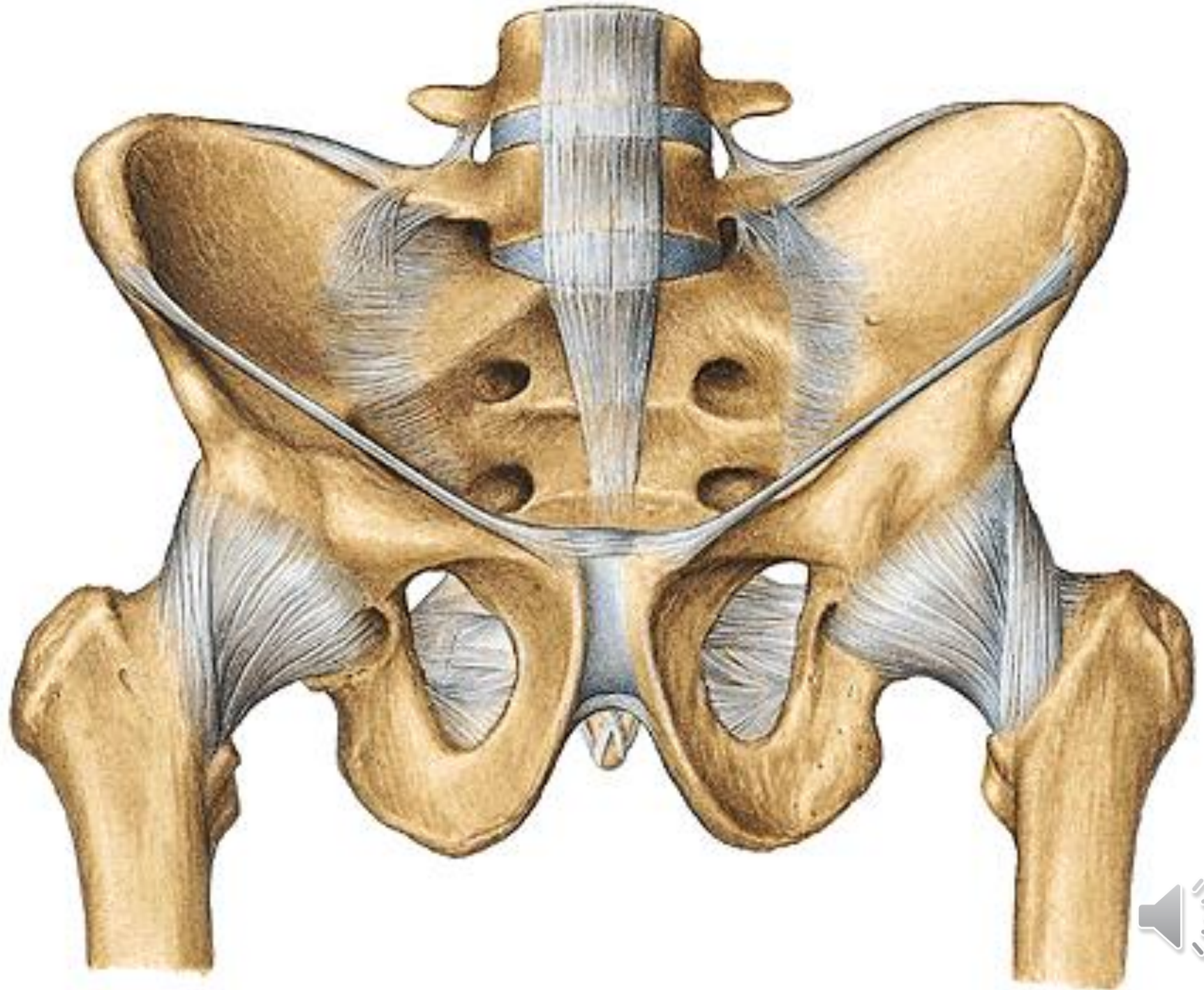


REGIONAL ANATOMY OF THE PELVIS

Ivana Hradilová Svíženská

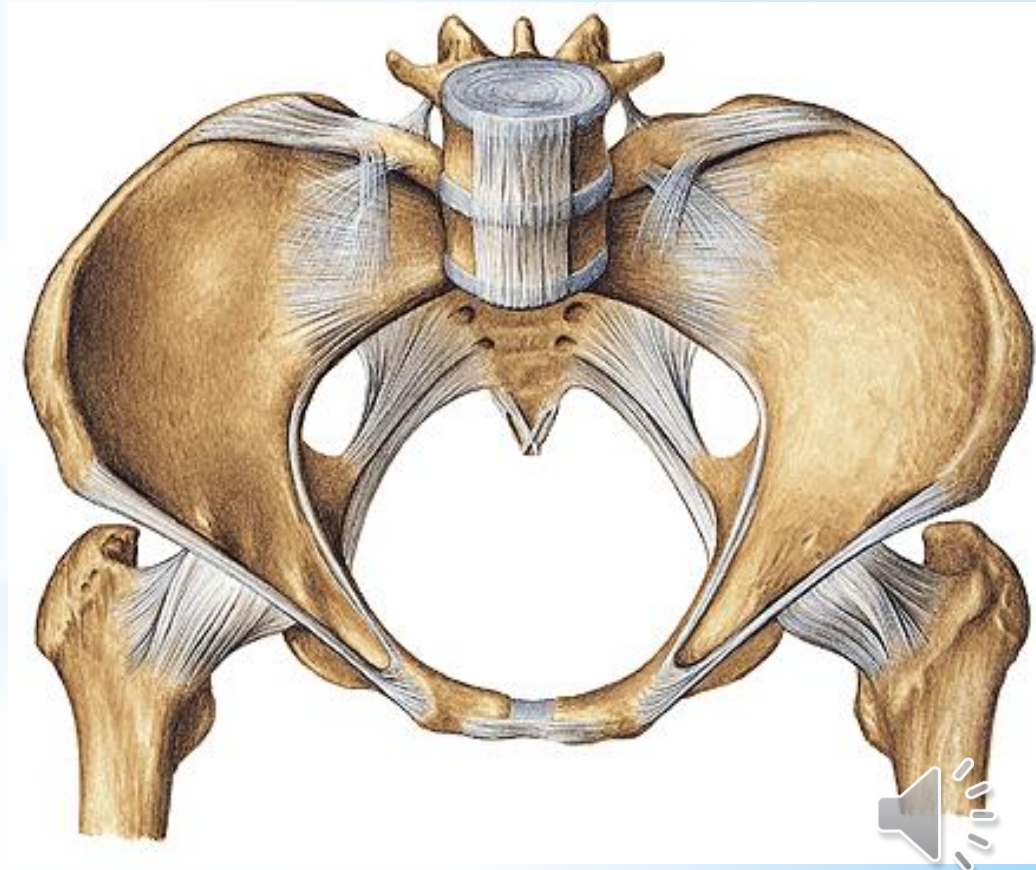




PELVIC CAVITY

Superior border – aditus pelvis:

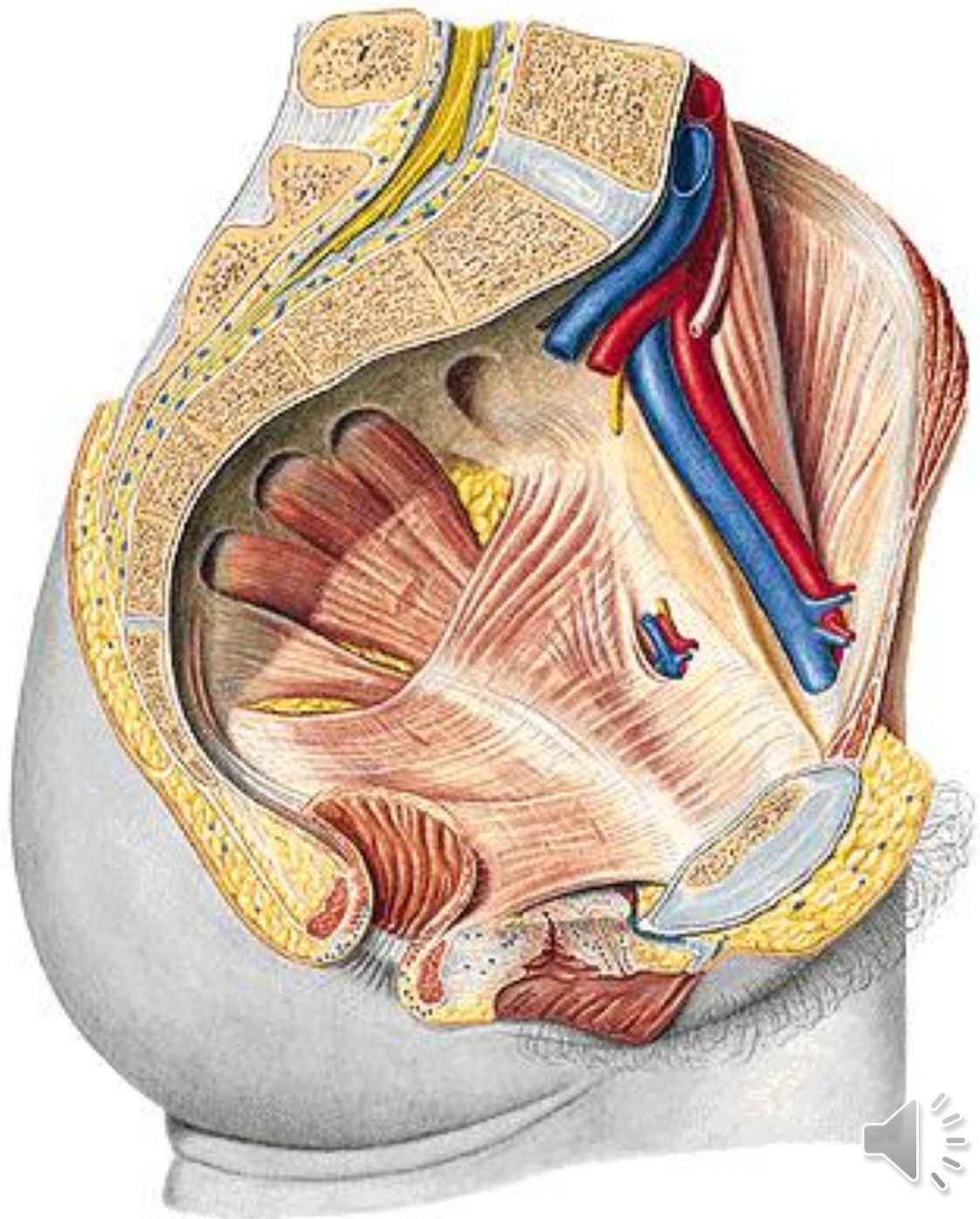
**promontorium
linea terminalis
symphysis pubis**



PELVIC CAVITY

Lateral wall:

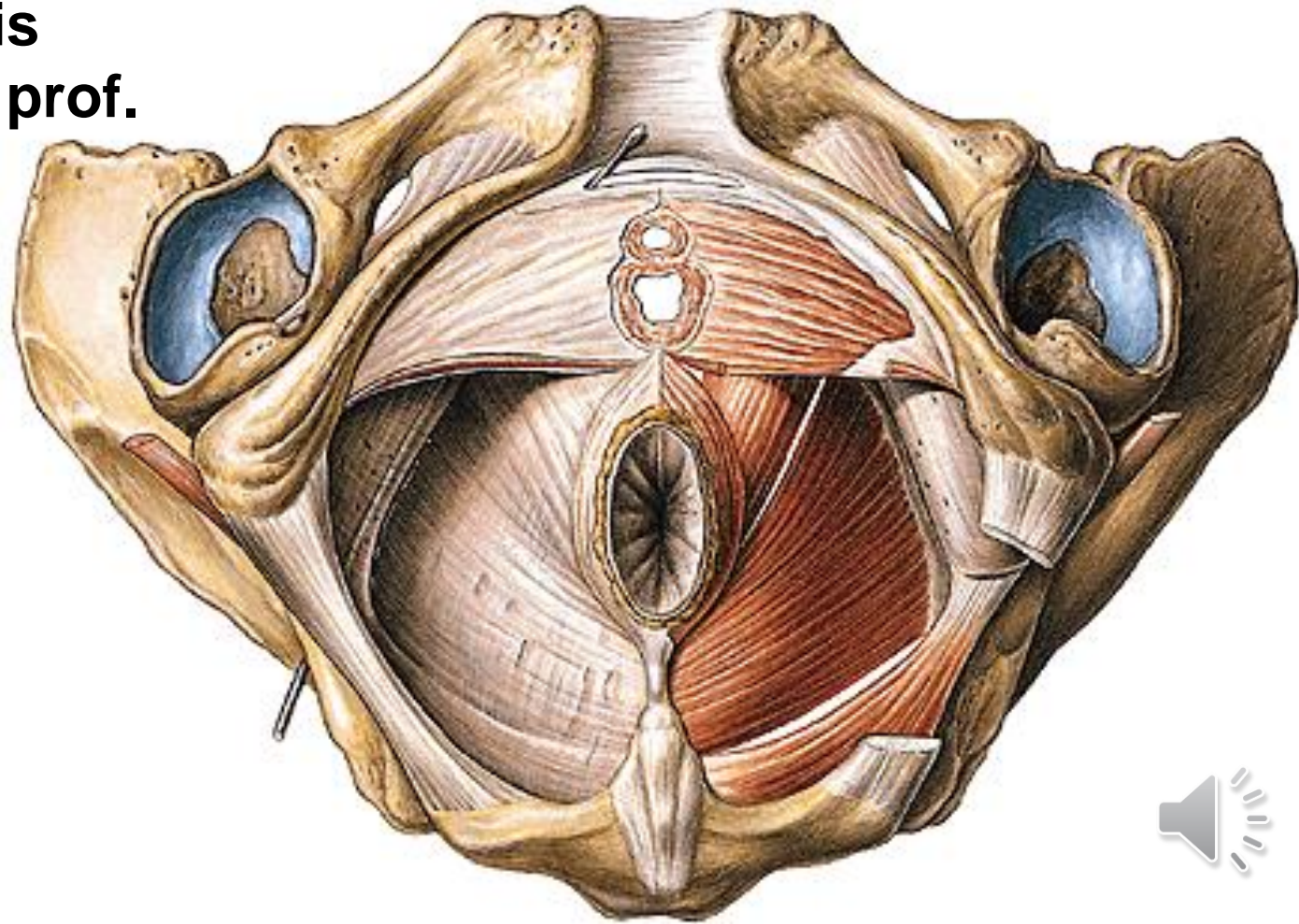
m. obturatorius int.
m. piriformis



PELVIC CAVITY

Inferior wall:

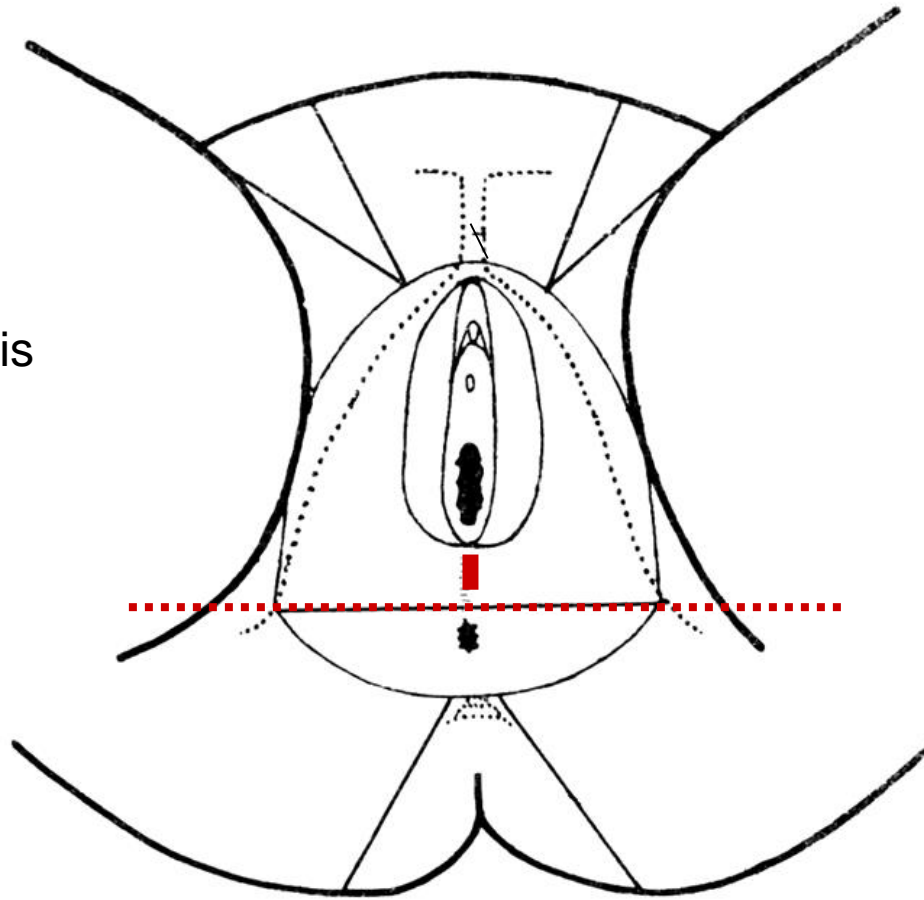
diphragma pelvis
spatium perinei prof.



REGIO PERINEALIS

regio urogenitalis

regio analis



REGIO ANALIS

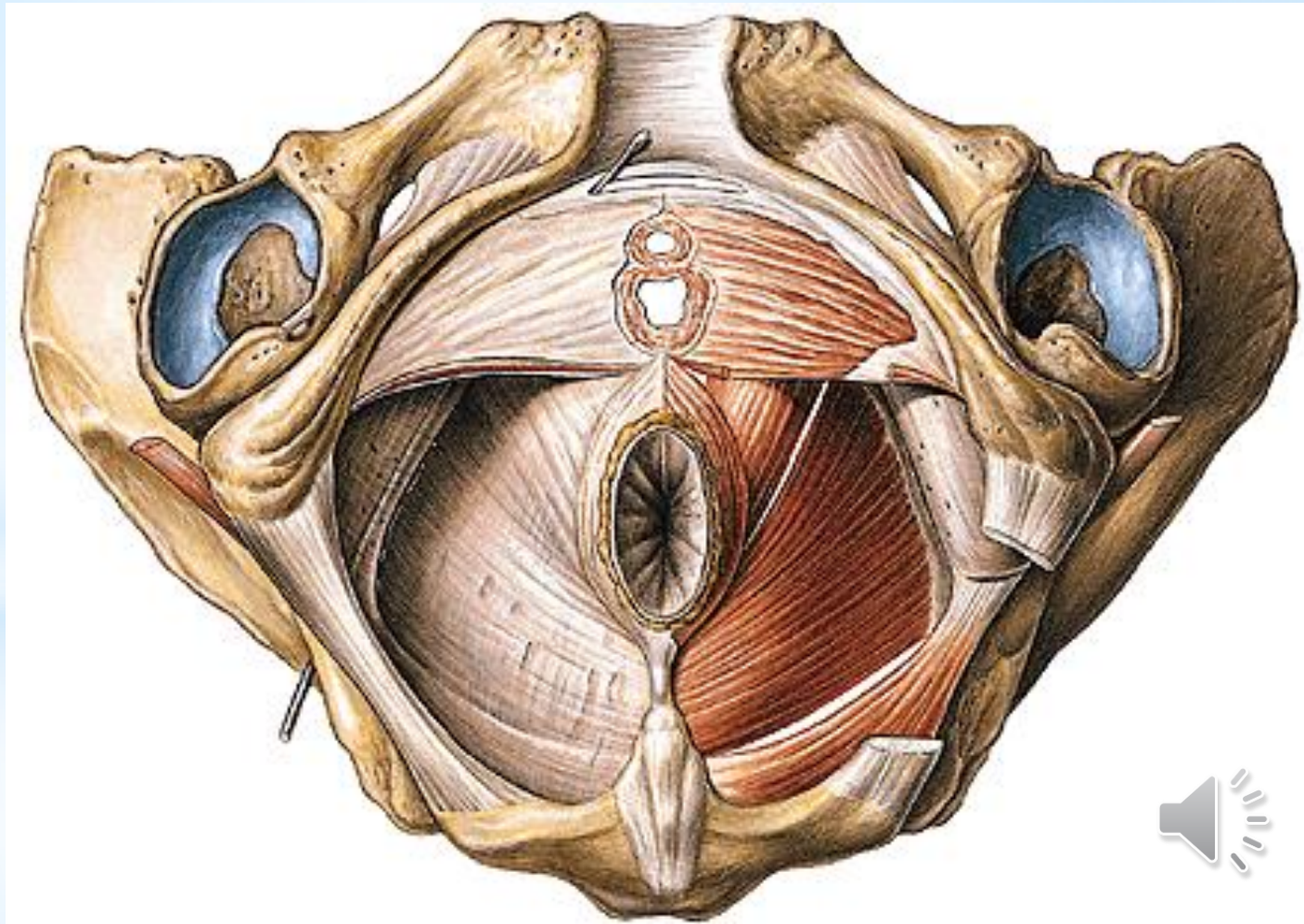
anus

raphe perinei

glandulae circumanales



m. sphincter ani externus
centrum tendineum
ligamentum anococcygeum

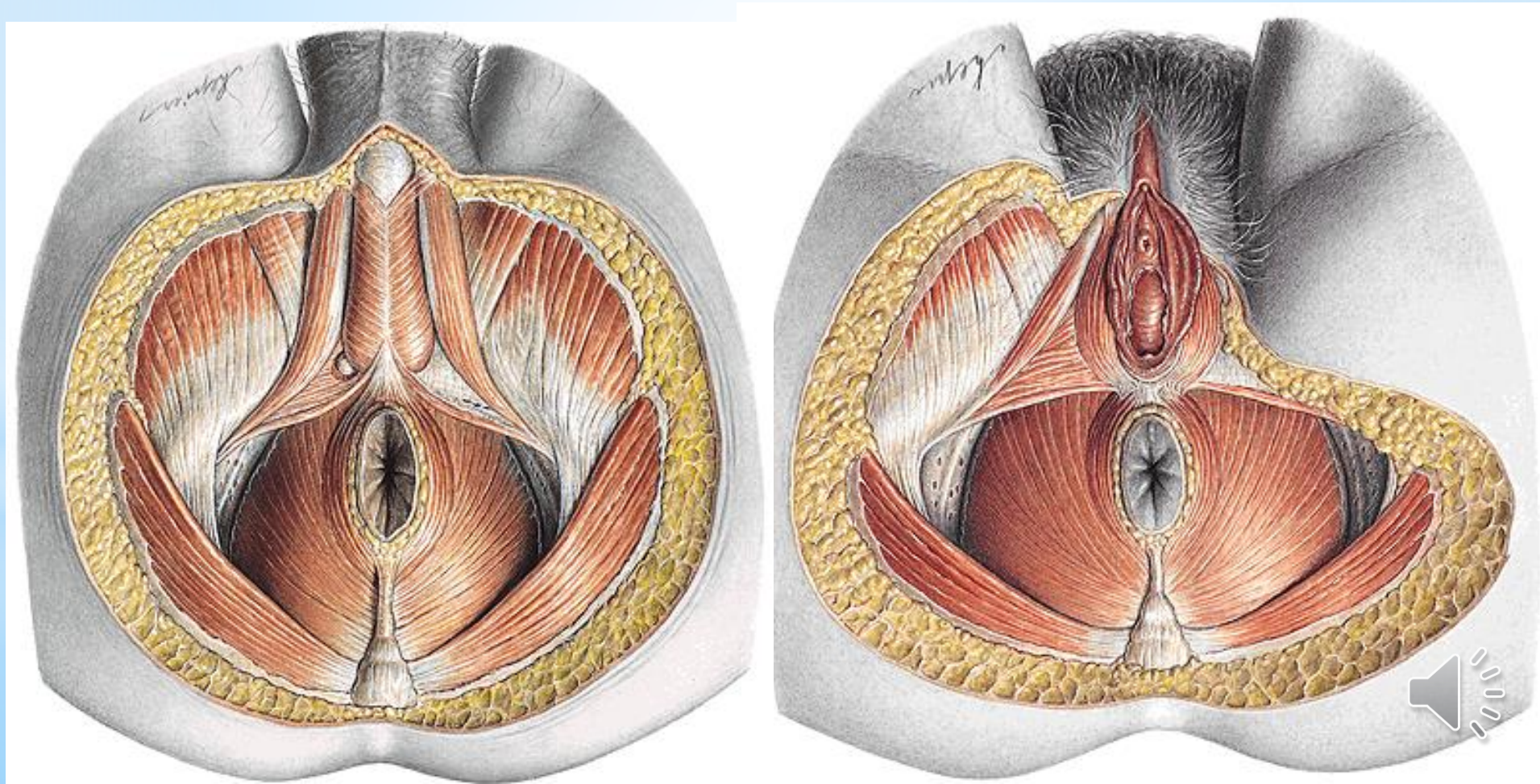


FOSSA ISCHIOANALIS/ISCHIORECTALIS

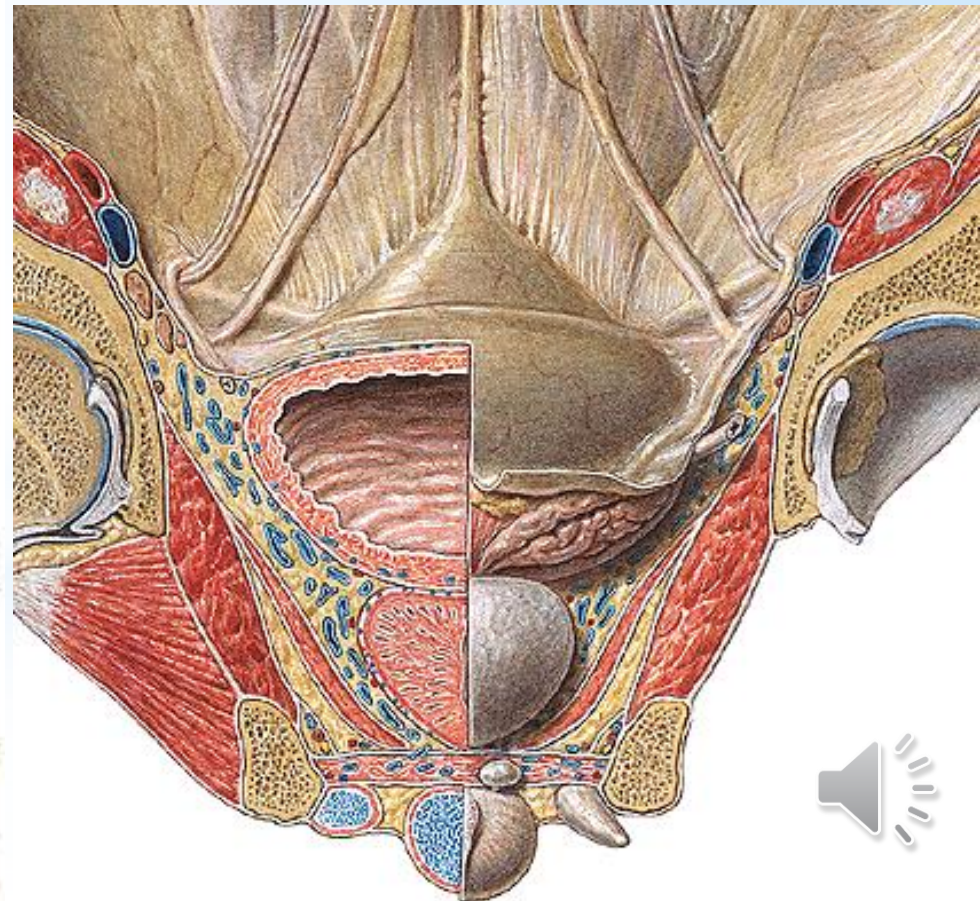
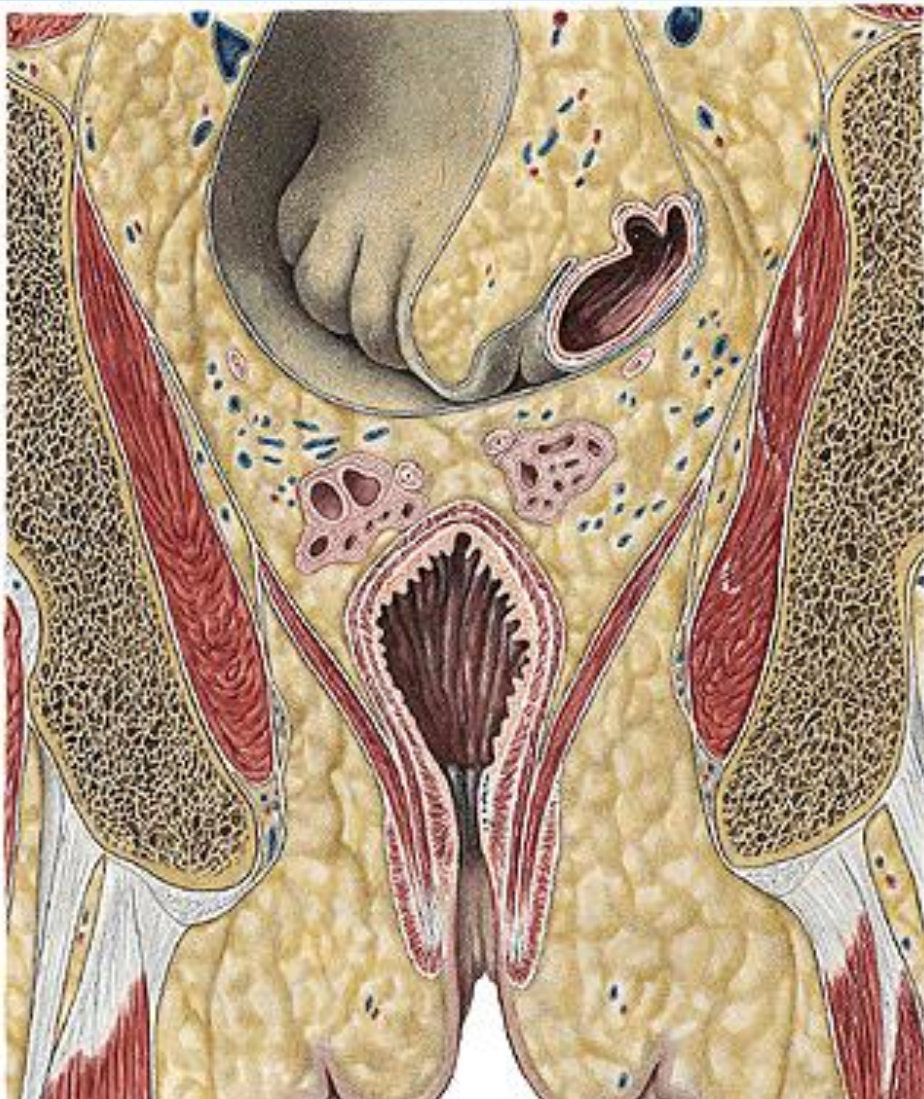
m. levator ani + fascia inf. diaphragmatis pelvis

m. obturatorius + fascia obturatoria

lig. sacrotuberale + m. gluteus maximus



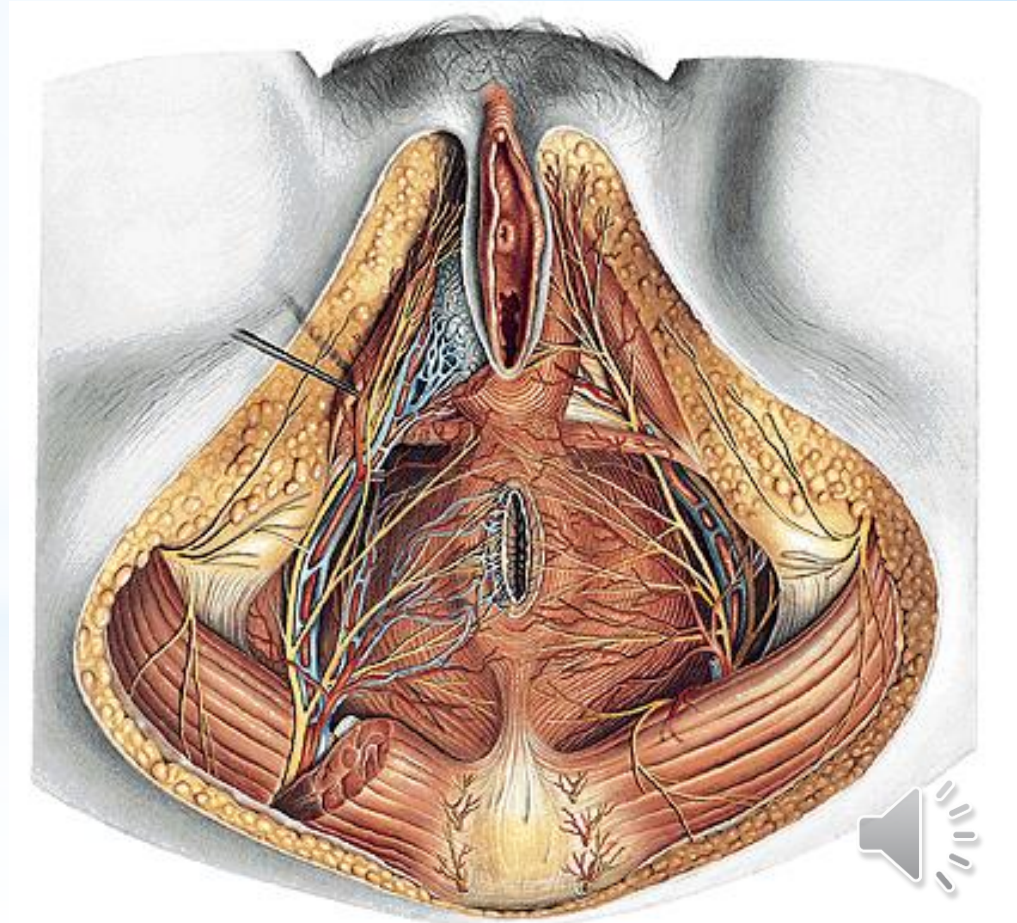
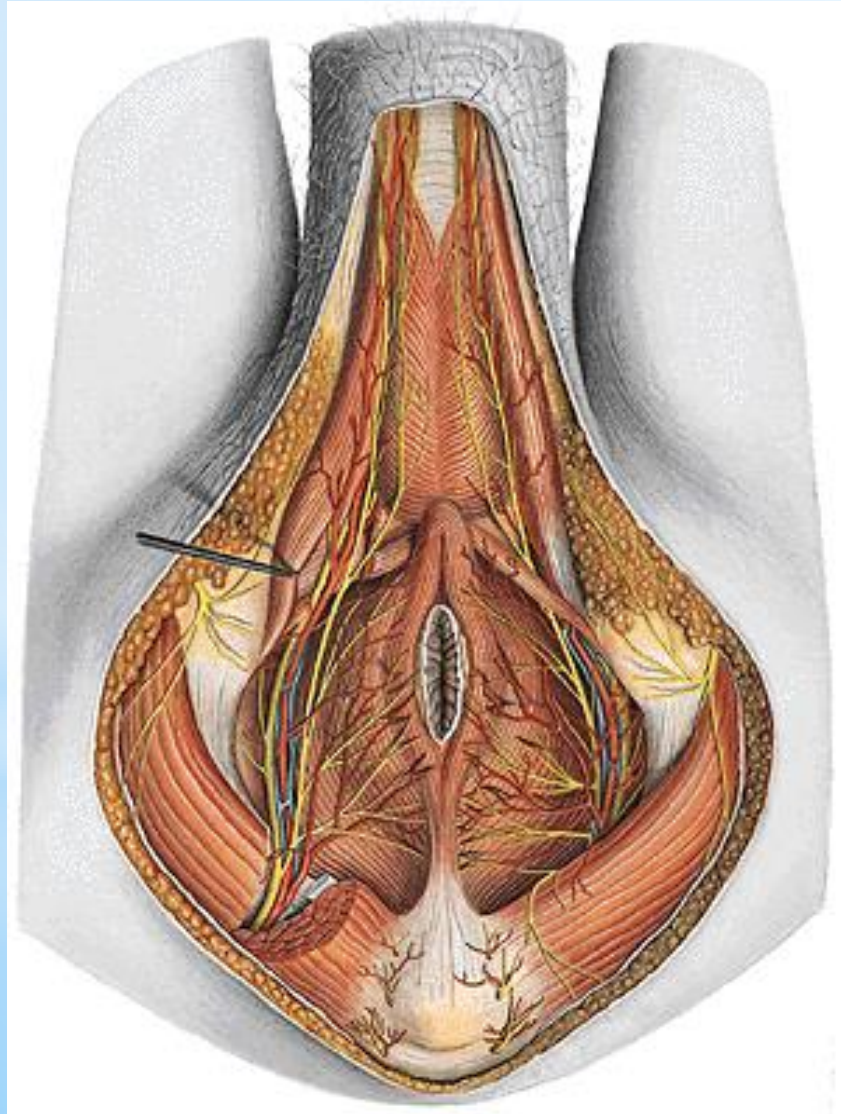
RECESSUS PUBICUS FOSSAE ISCHIOANALIS/RECTALIS



CANALIS PUDENDALIS (ALCOCK)

n. pudendus – nn. rectales inf., nn. perineales

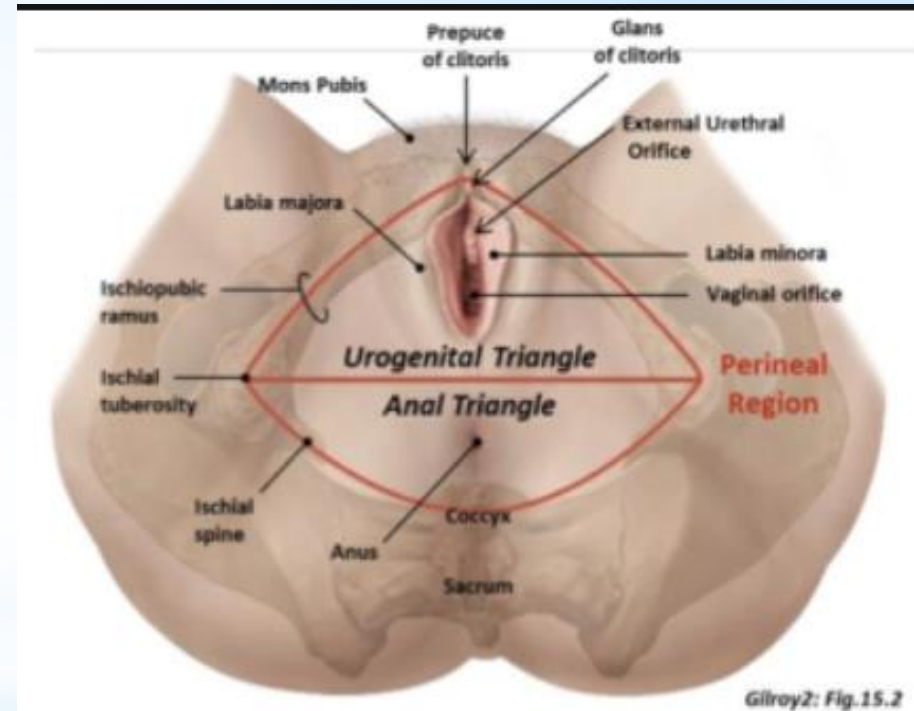
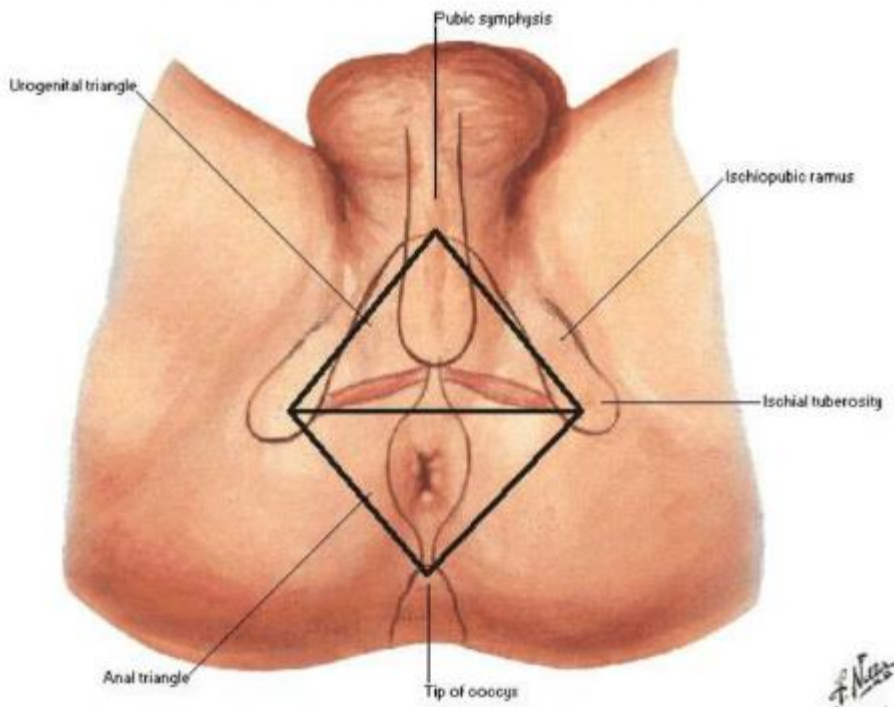
a. et v. pudenda int. – vasa rectalia inf., vasa perinealia



REGIO UROGENITALIS

Perineum of Male

Regions [Triangles] and Surface Topography



REGIO UROGENITALIS MASCULINA

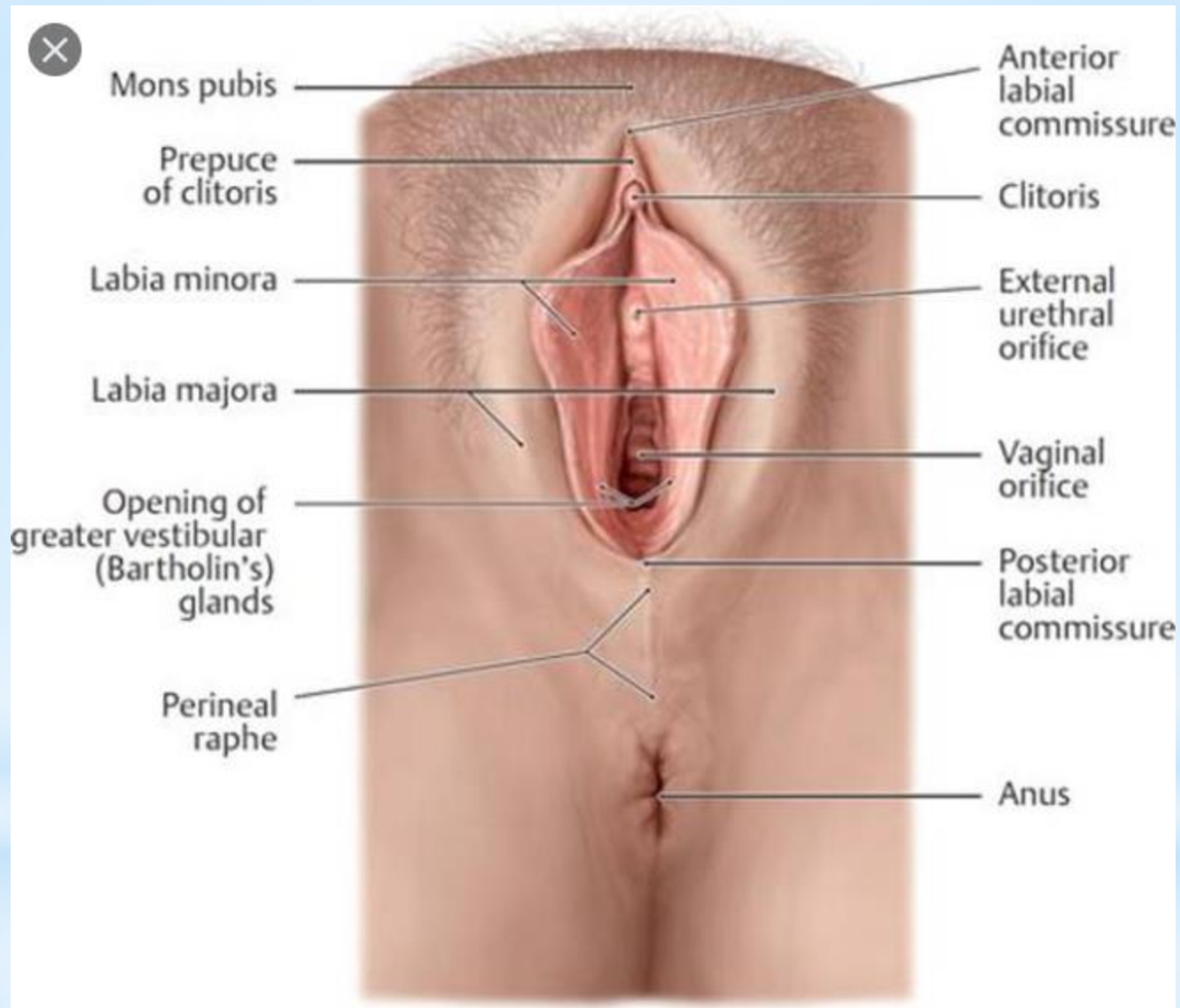
penis - preputium

scrotum

pubes



REGIO UROGENITALIS FEMININA



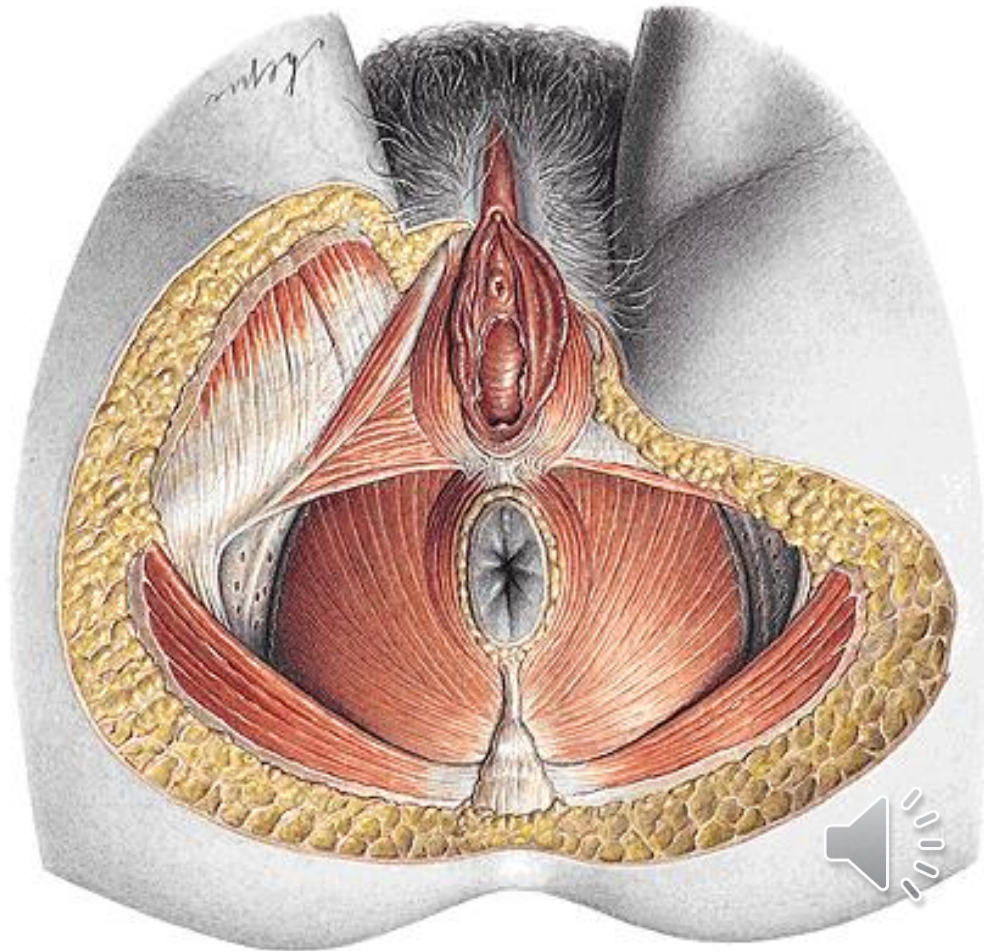
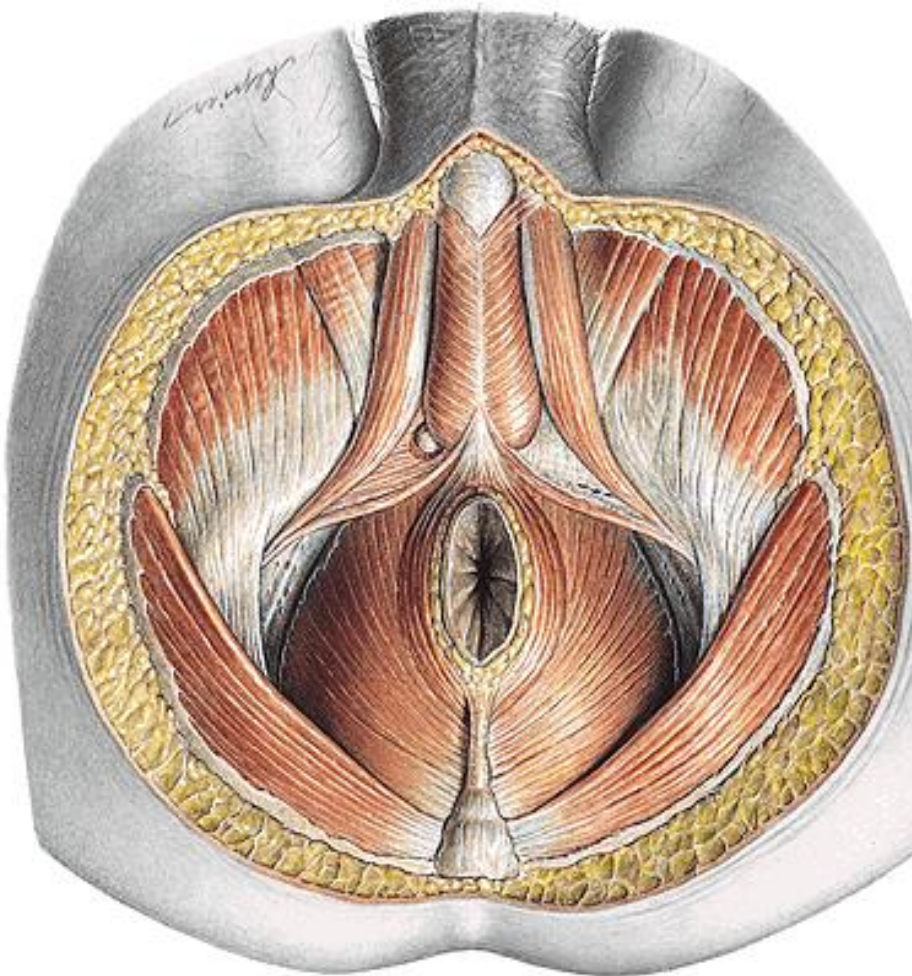
SPATIUM SUPERFICIALE PERINEI

fascia superficialis perinei

m. ischiocavernosus

m. bulbospongiosus

rima pudendi





SK



SK

SACCUS PROFUNDUS PERINEI / SPATIUM PERINEI PROF. (DIAPHRAGMA UROGENITALE)

membrana perinealis

m. sphincter urethrae externus

m. transversus perinei prof.

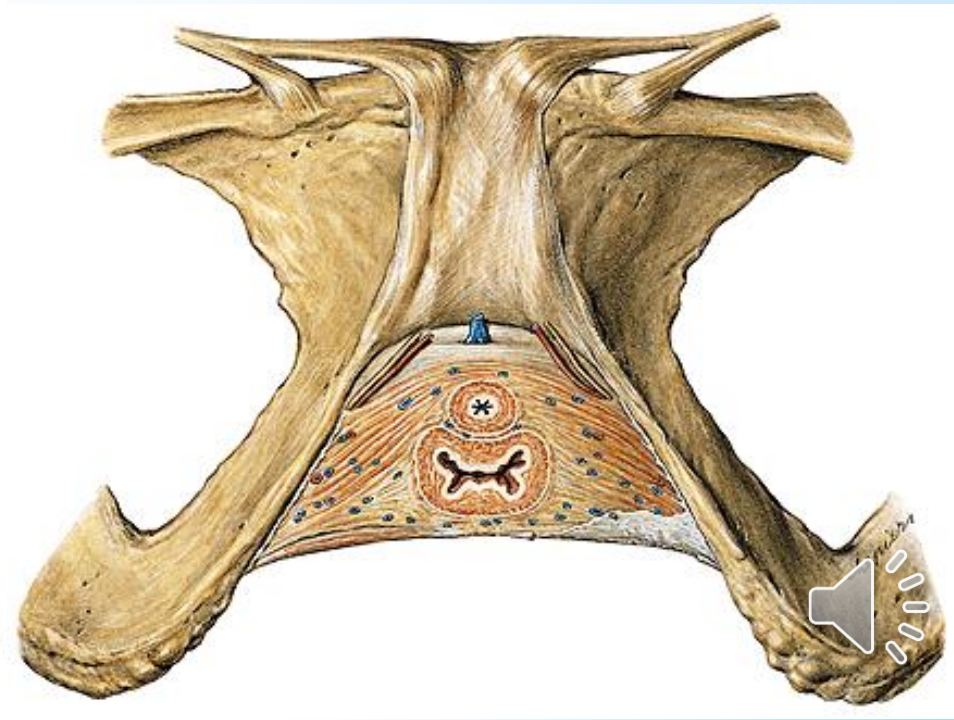
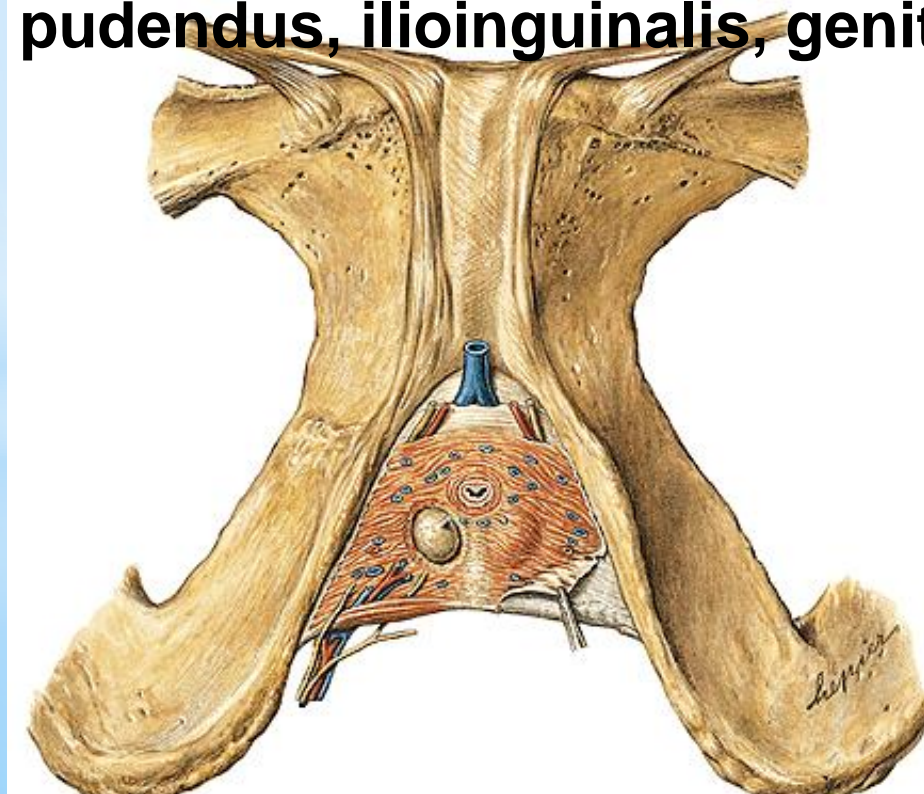
m. urethrovaginalis

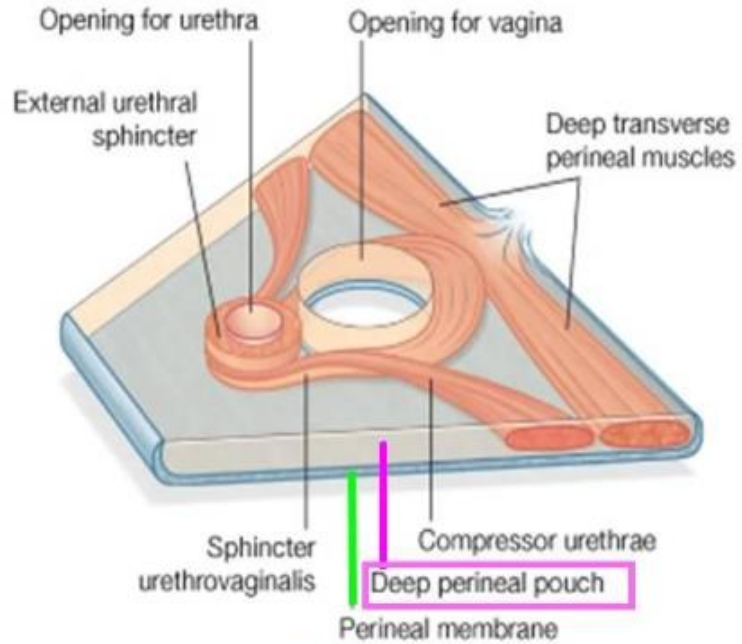
m. compressor urethrae

lig. transversum perinei

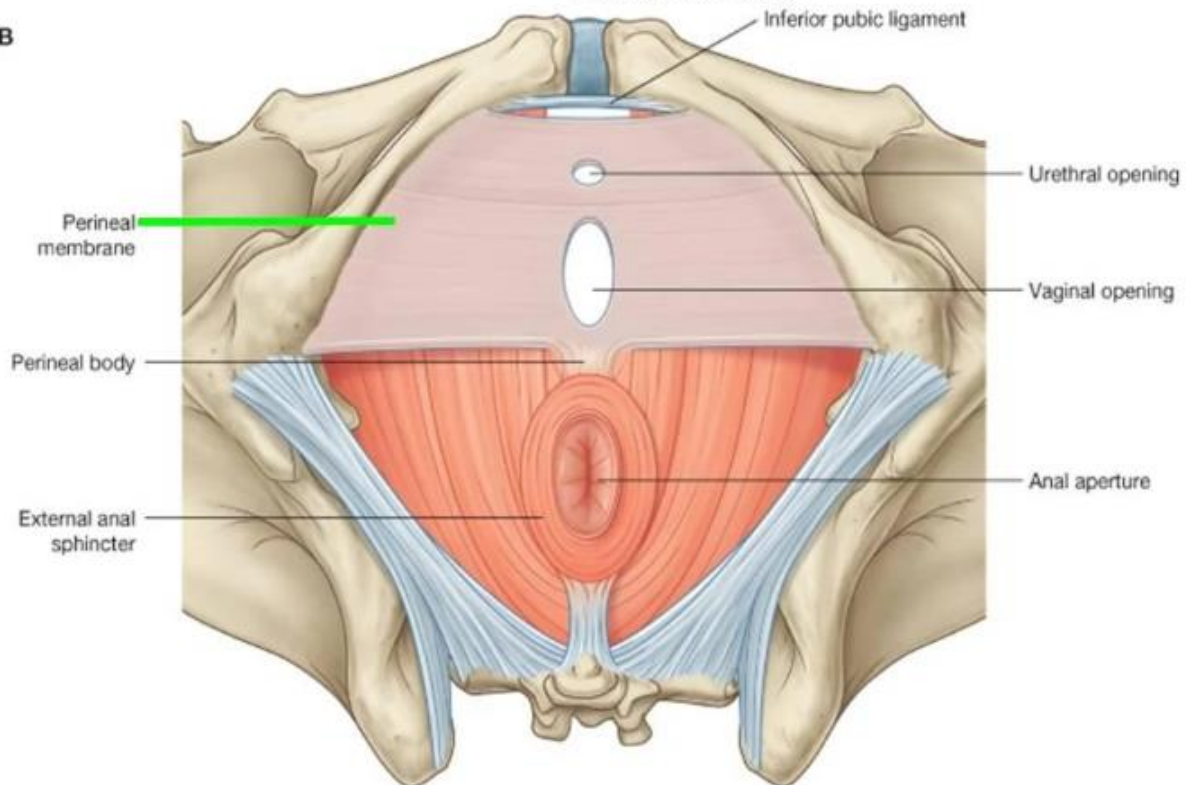
v. dorsalis penis/clitoridis prof., vasa pudenda int., nn.

pudendus, ilioinguinalis, genitofemoralis, nll. inguinales spf.





B



DIAPHRAGMA PELVIS

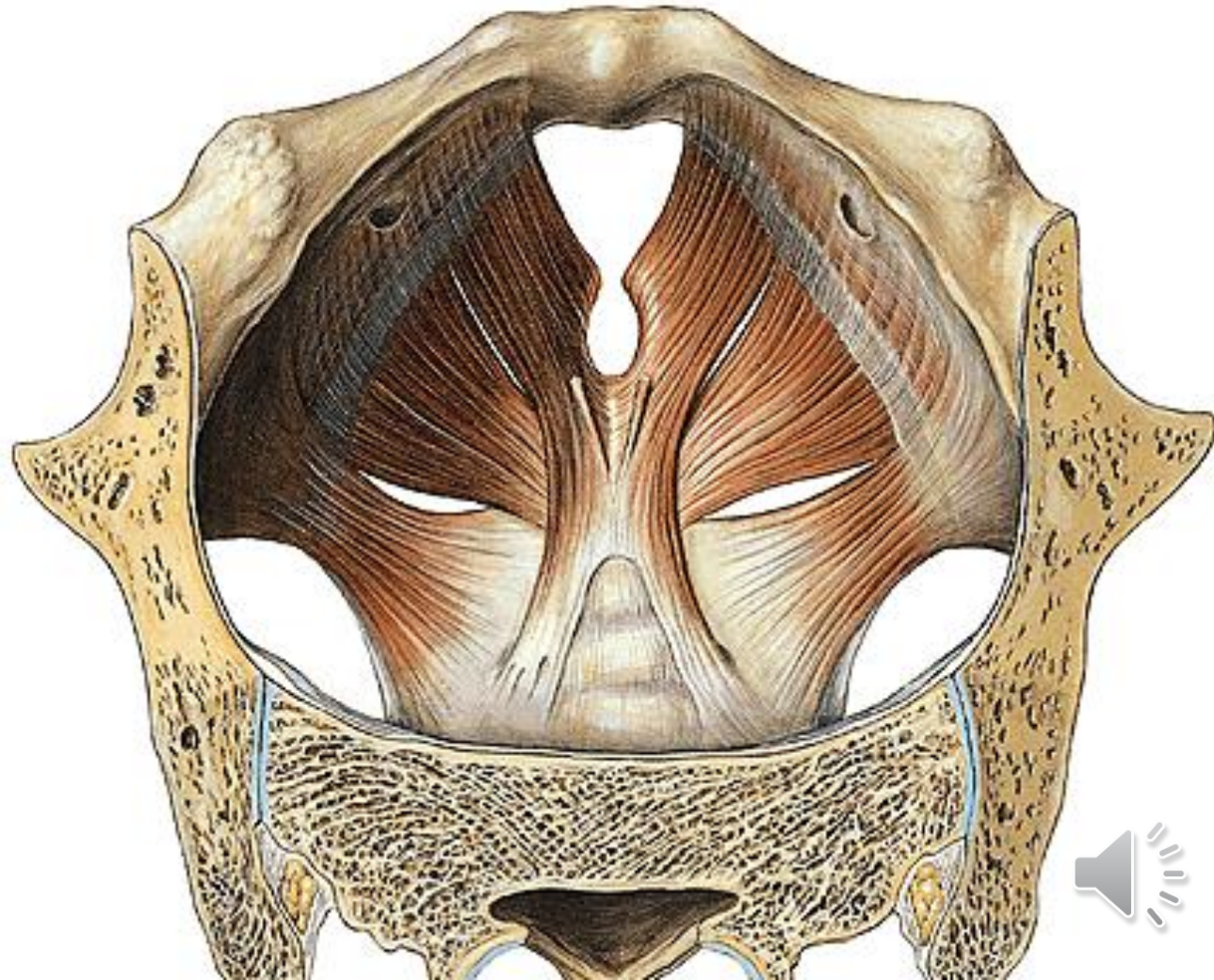
m. levator ani – m. iliococcygeus

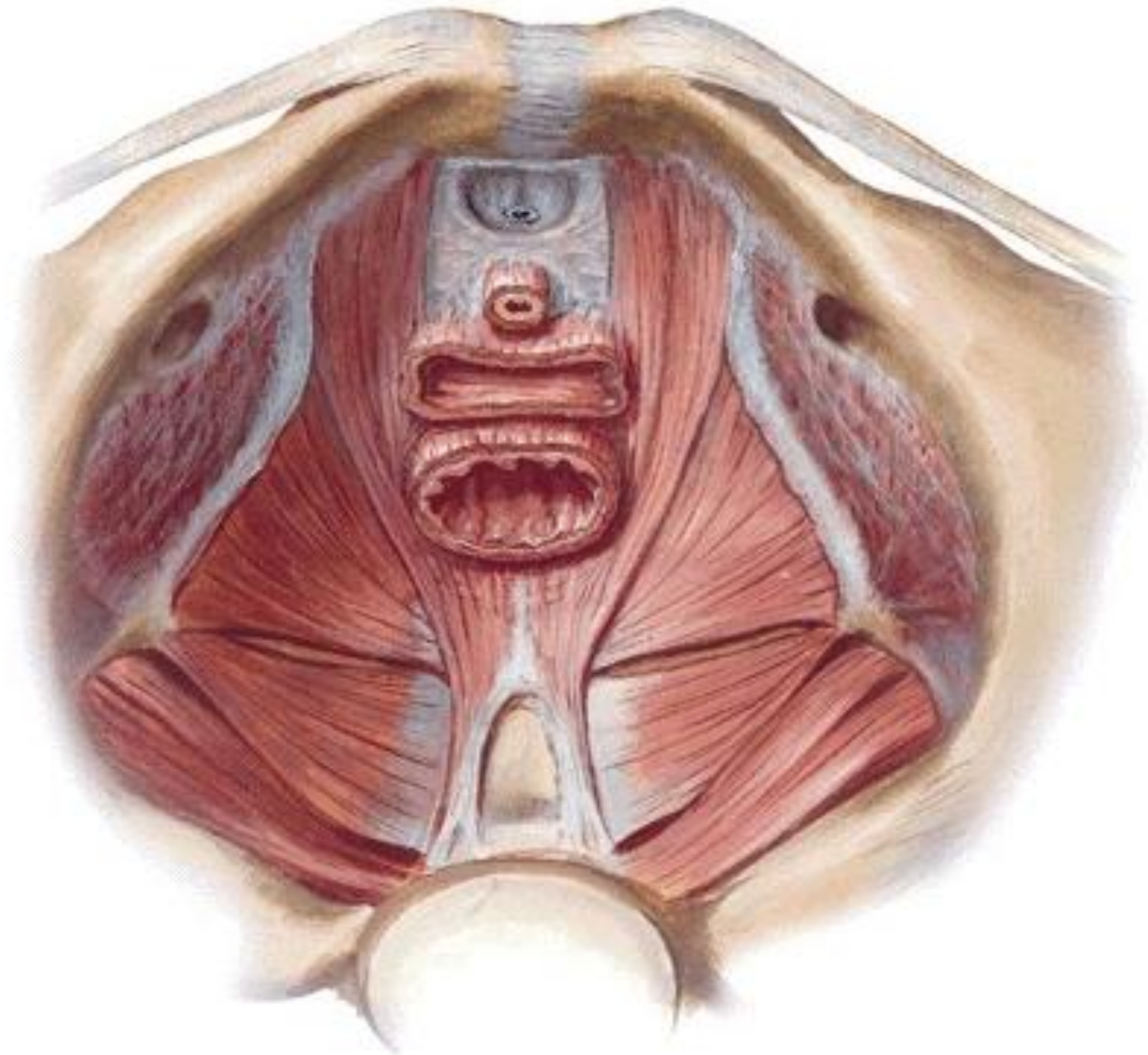
**– m. pubococcygeus (m. levator prostatae,
m. pubovaginalis, m. puborectalis)**

m. coccygeus

**Arcus tendineus
m. levatoris ani**

**Hiatus
urogenitalis**





Fascia diaphragmatis pelvis inf.



Arcus tendineus fasciae pelvis

PELVIC FASCIA

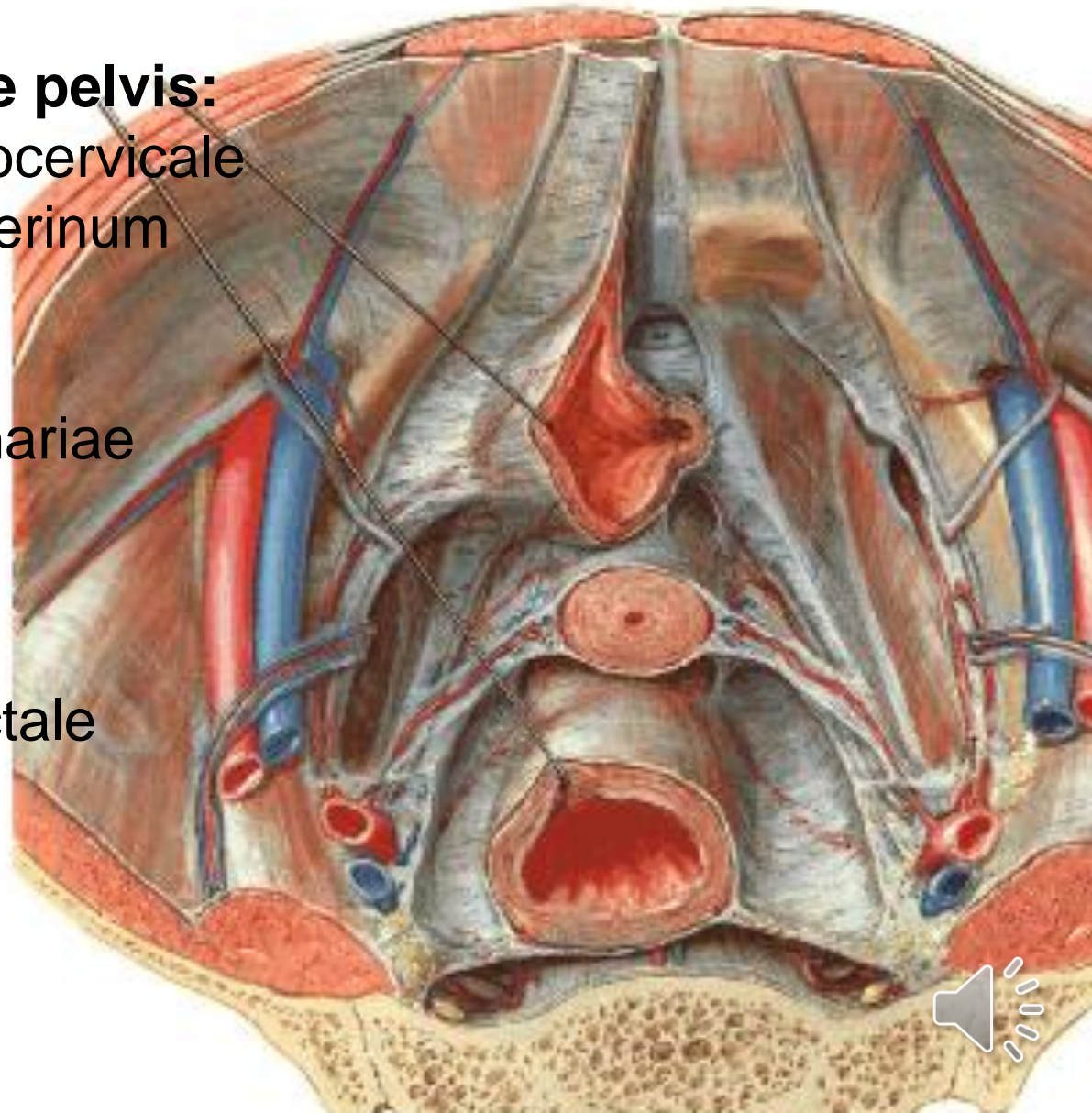
Fascia pelvis parietalis

Arcus tendineus fasciae pelvis:

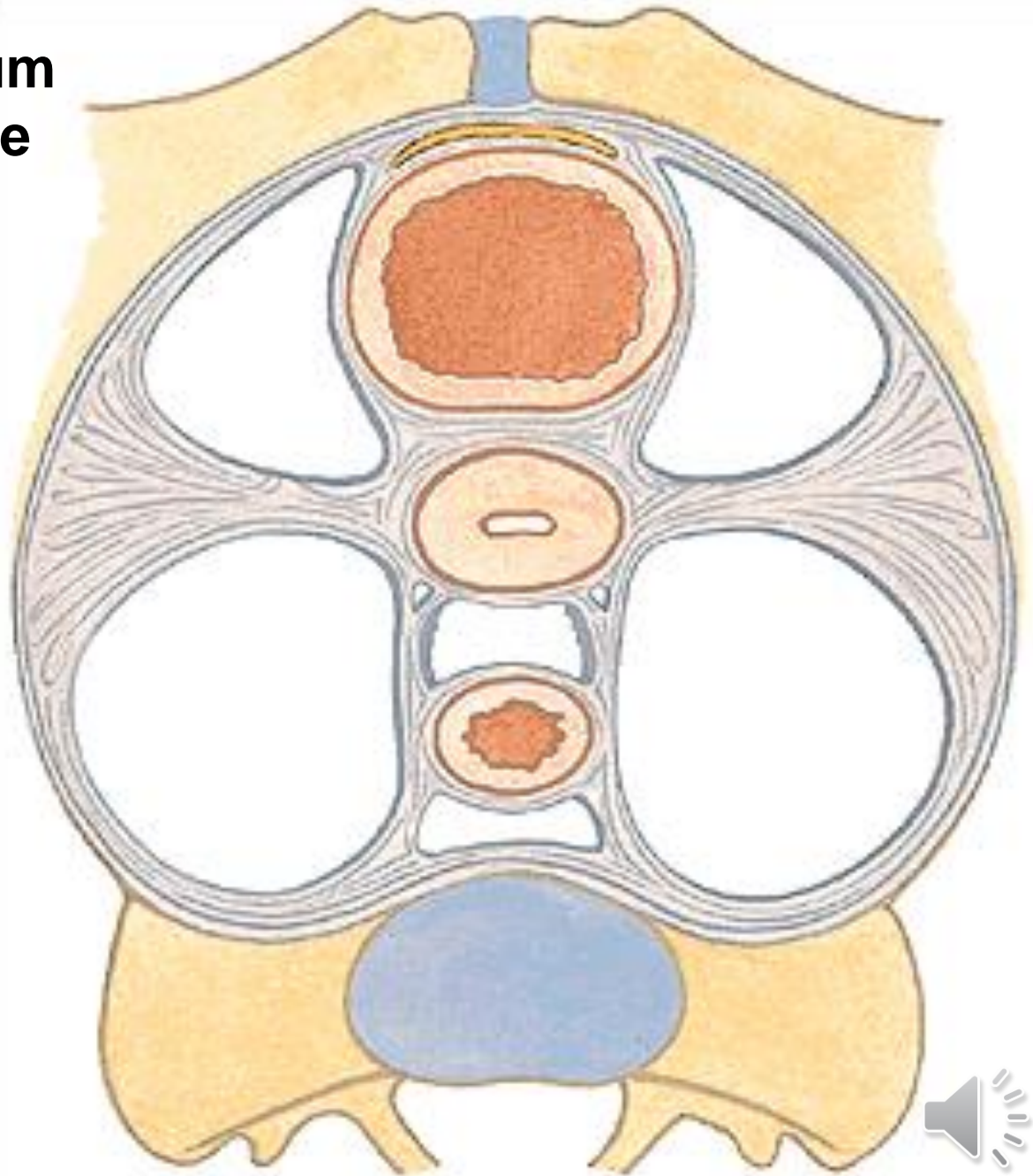
- lig. puboprostaticum/pubocervicale
- lig. sacrogenitale/sacruterinum

Fascia pelvis visceralis

- lig. laterale vesicae urinariae
- lig. cardinale (cervicale transversum)
/ septum rectovesicale
- ligamentum laterale rectale

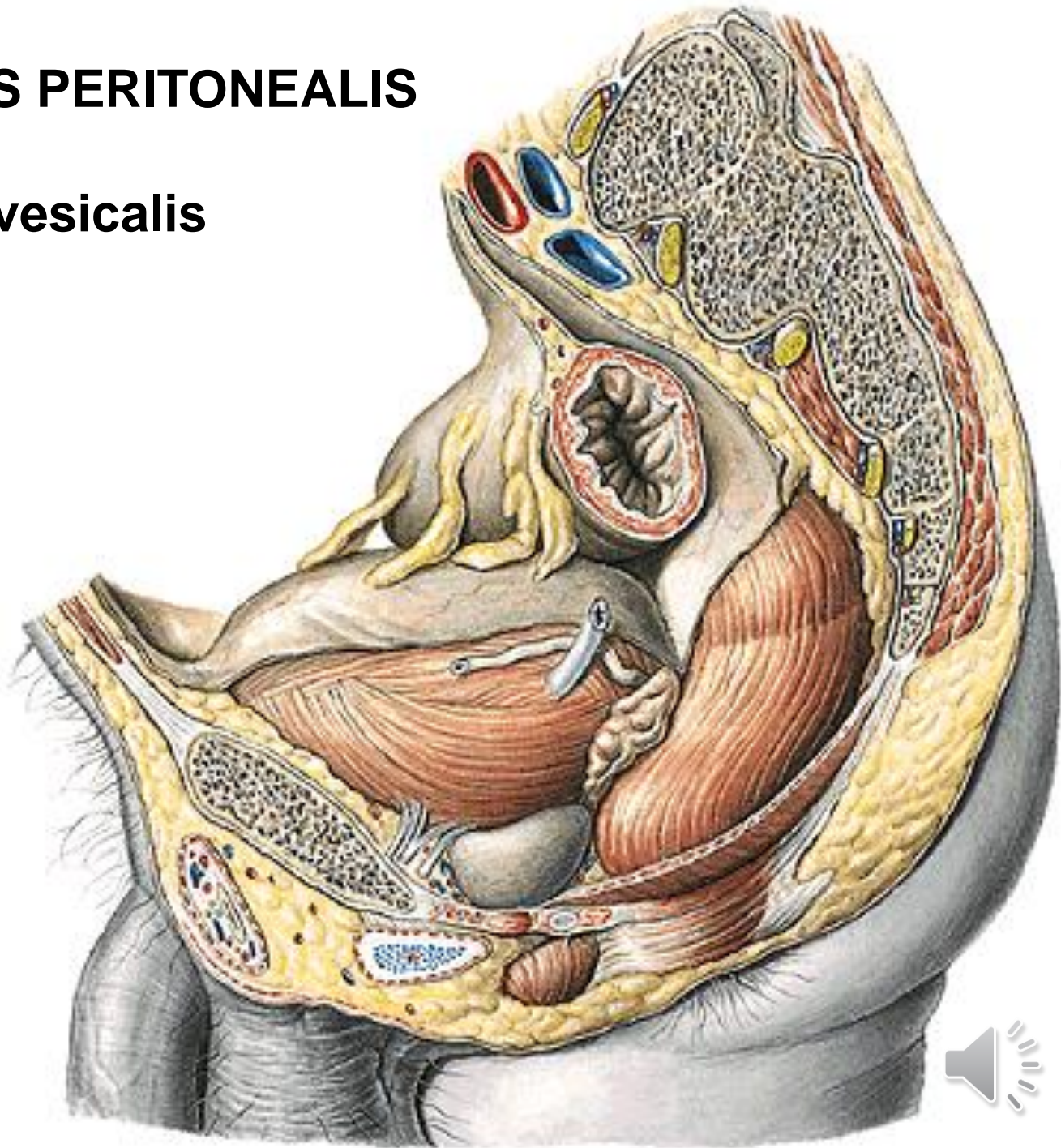


Spatium retropubicum
Spatium paravesicale
Parametrium
Paracolpium
Paraproctium
Spatium presacrale

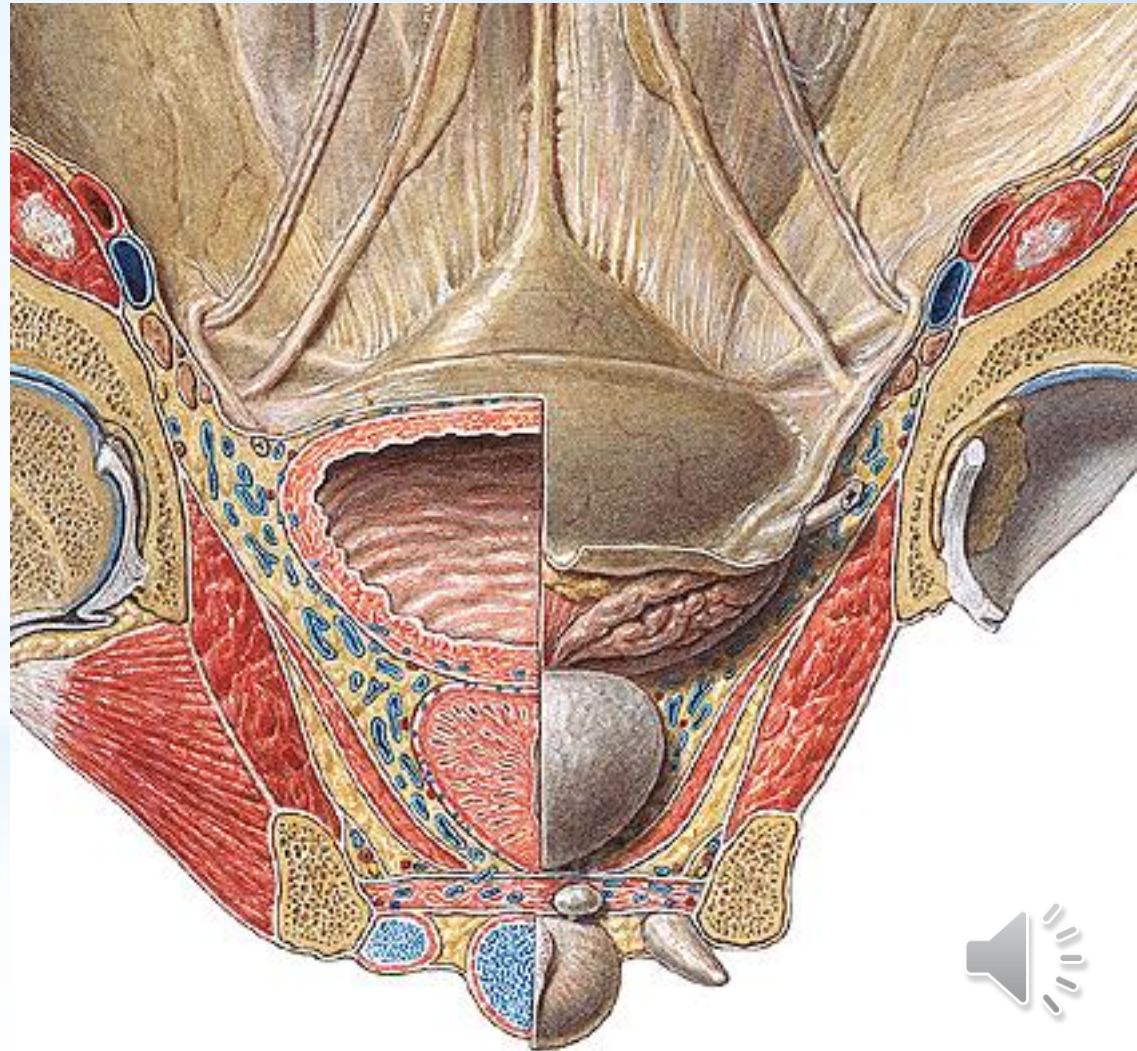


CAVITAS PELVIS PERITONEALIS

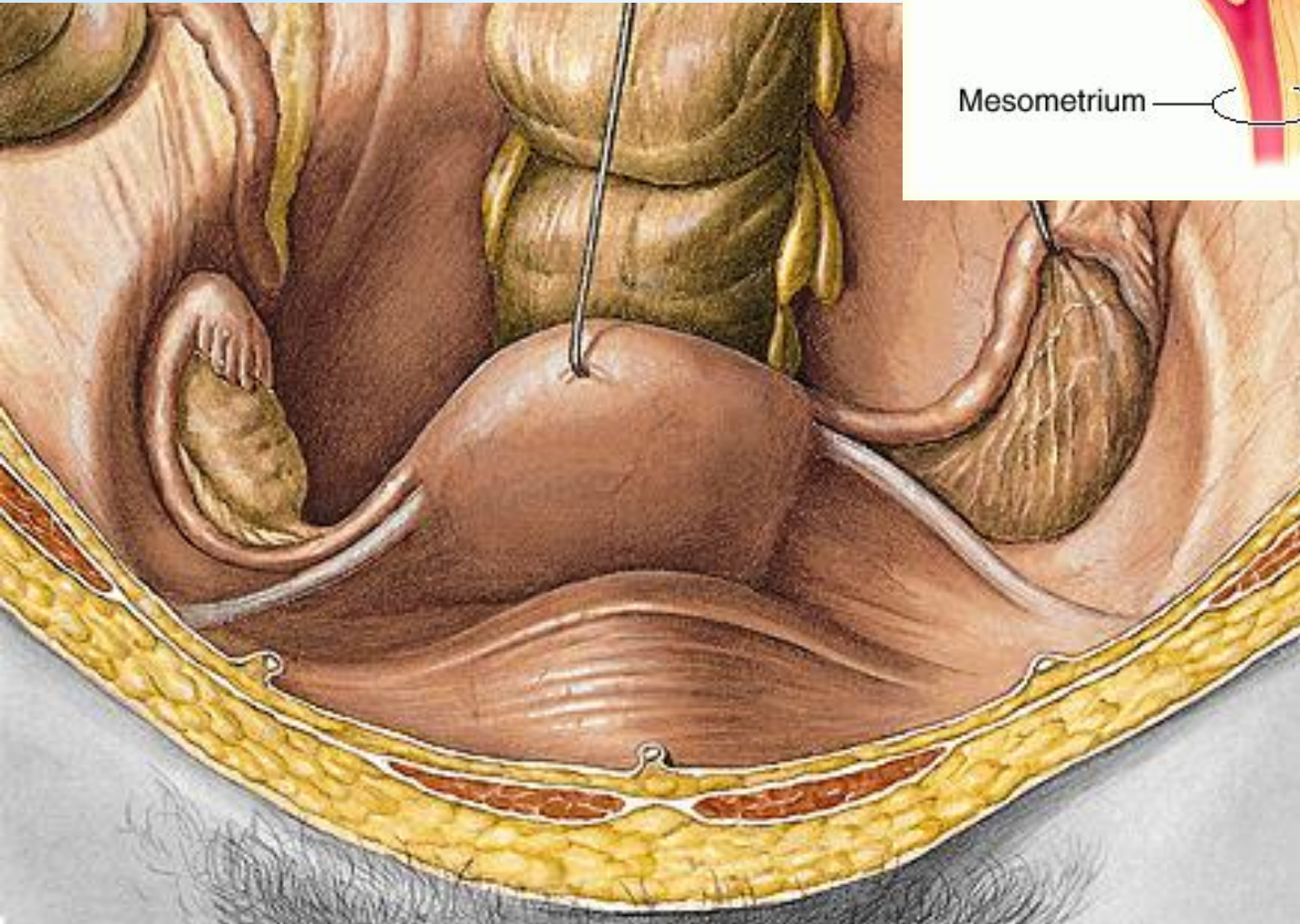
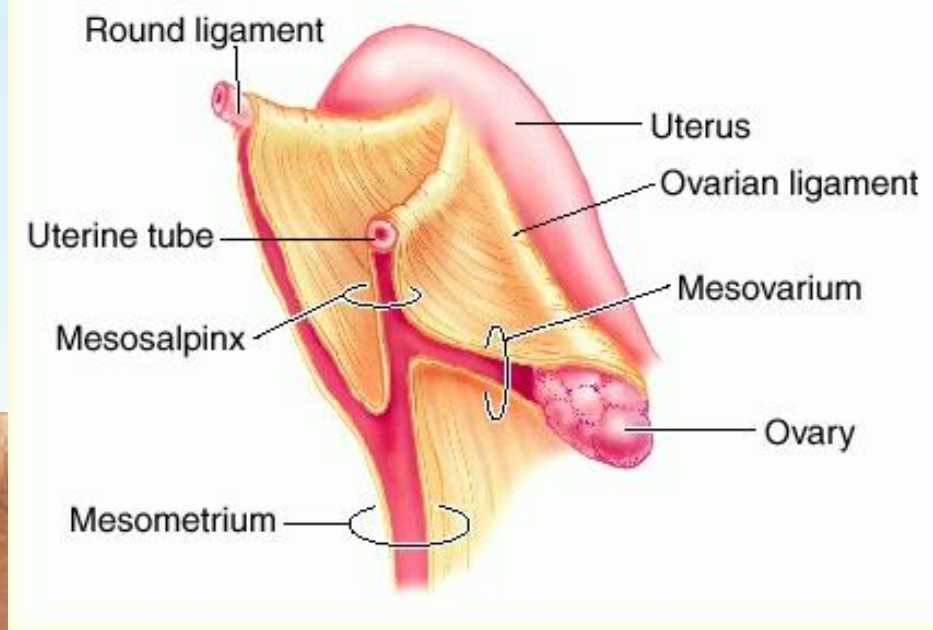
Excavatio rectovesicalis



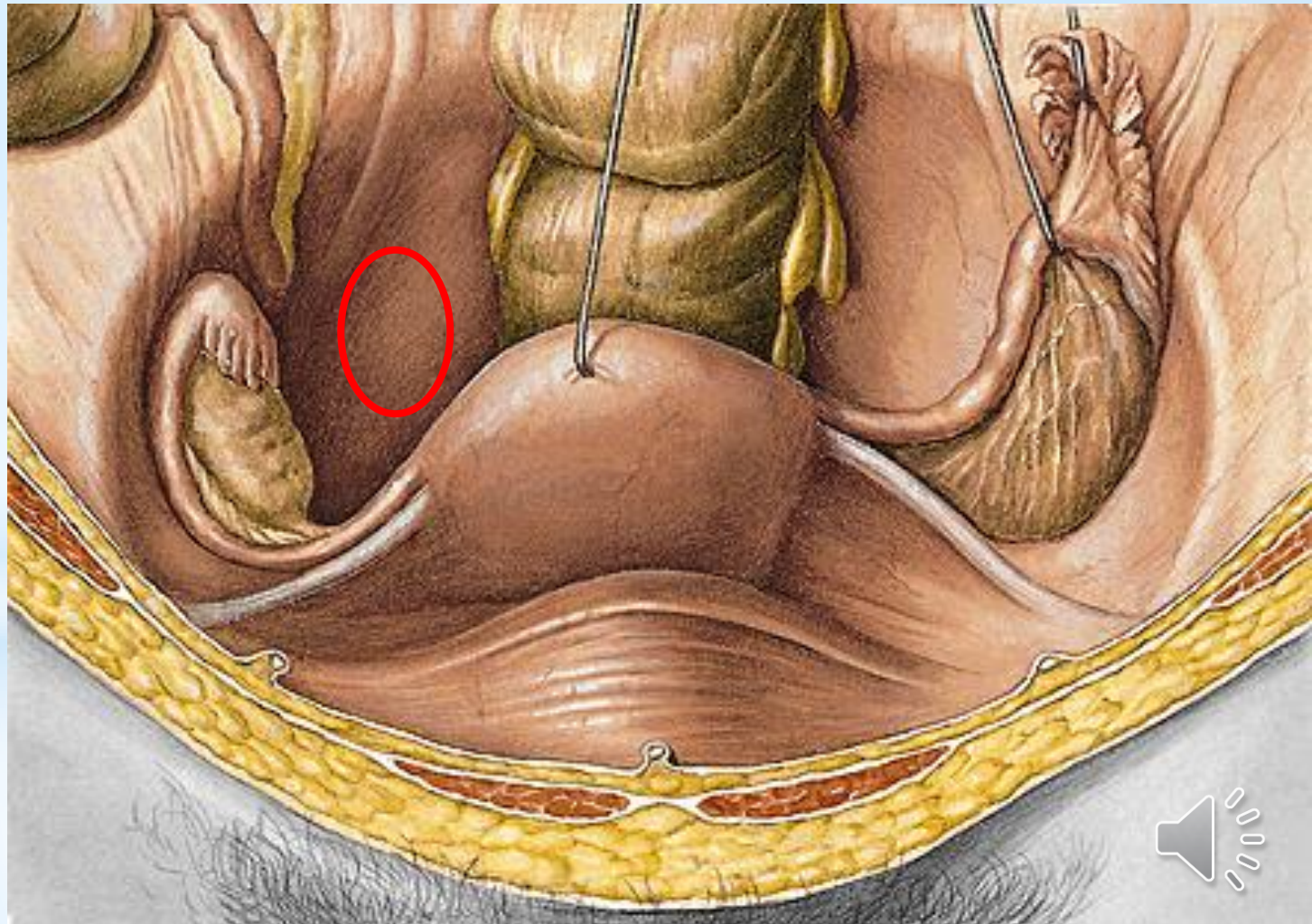
Plica vesicalis transversa
Plica ductus deferentis
Plica ureterica



Ligamentum latum uteri
Ligamentum ovarii proprium
Ligamentum suspensorium ovarii
Ligamentum teres uteri

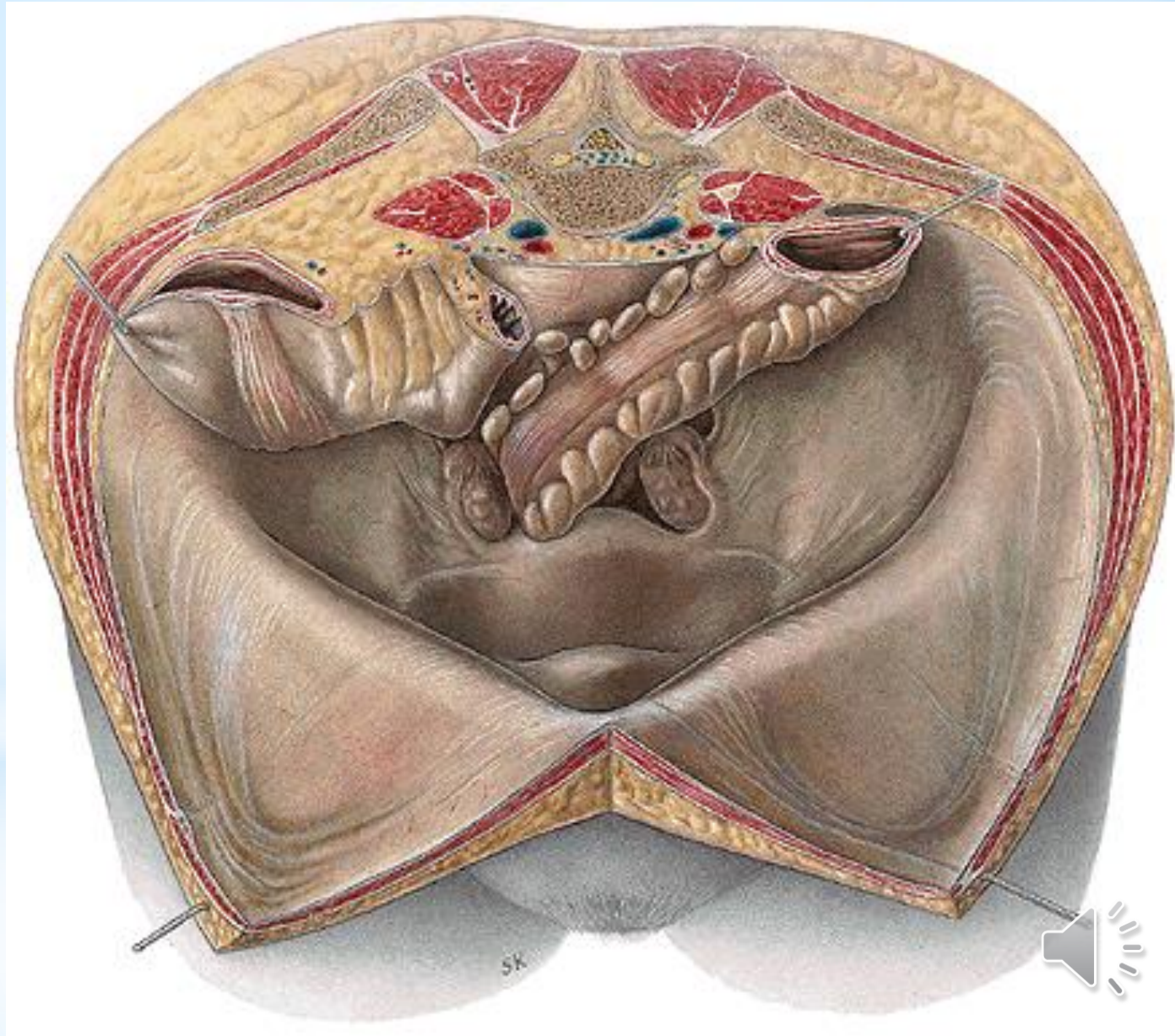


Fossa ovarica
Fossa Claudii
Ligamentum appendiculoovaricum



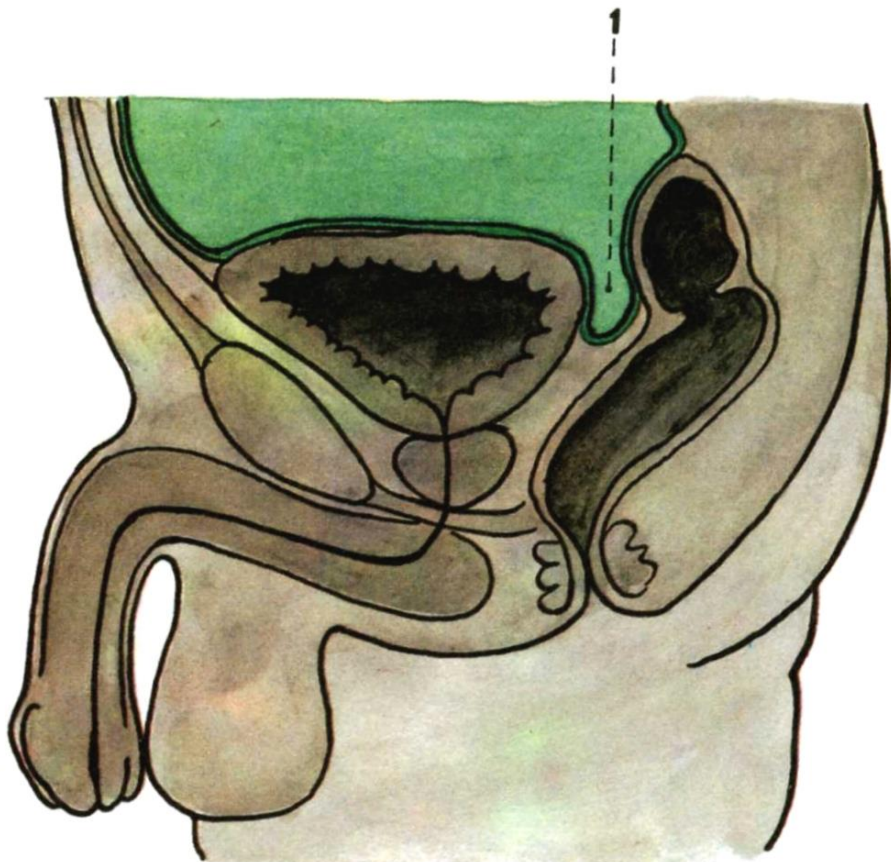
Excavatio vesicouterina

Excavatio rectouterina (Douglas)



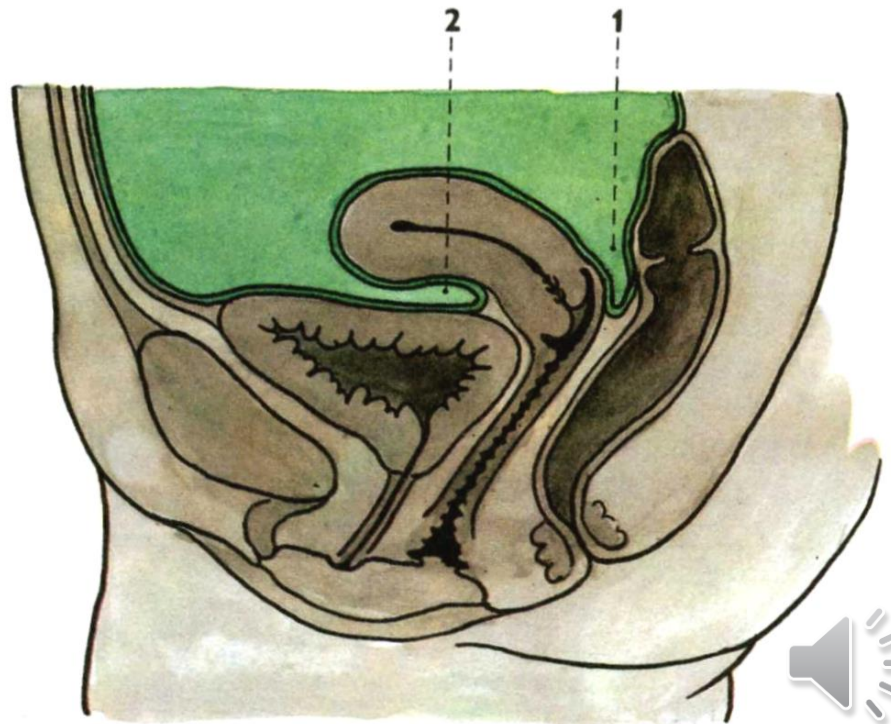
Median section through the male pelvis

1. excavatio rectovesicalis



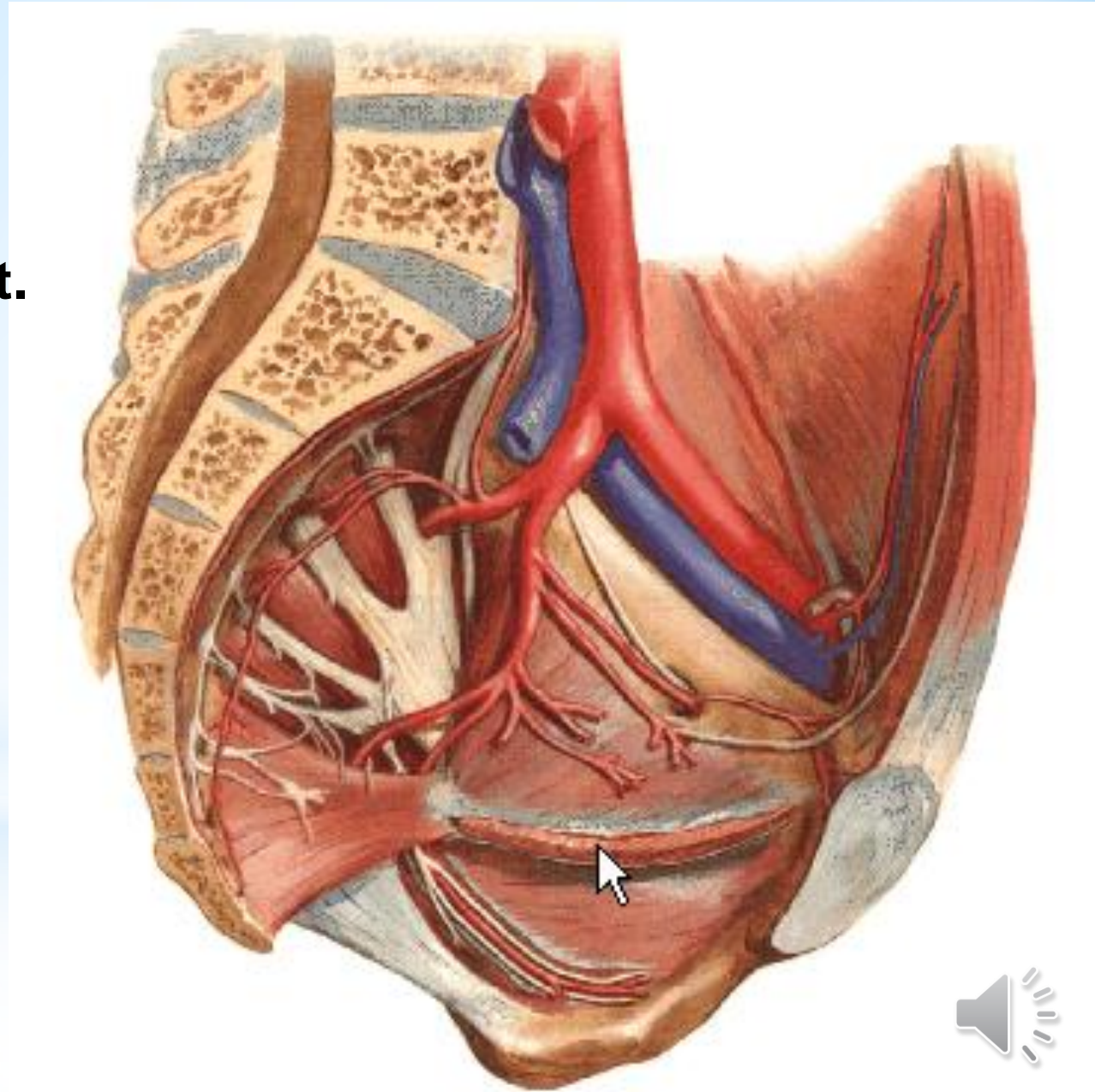
Median section through the female pelvis

1. excavatio rectouterina (Douglas)
2. excavatio vesicouterina

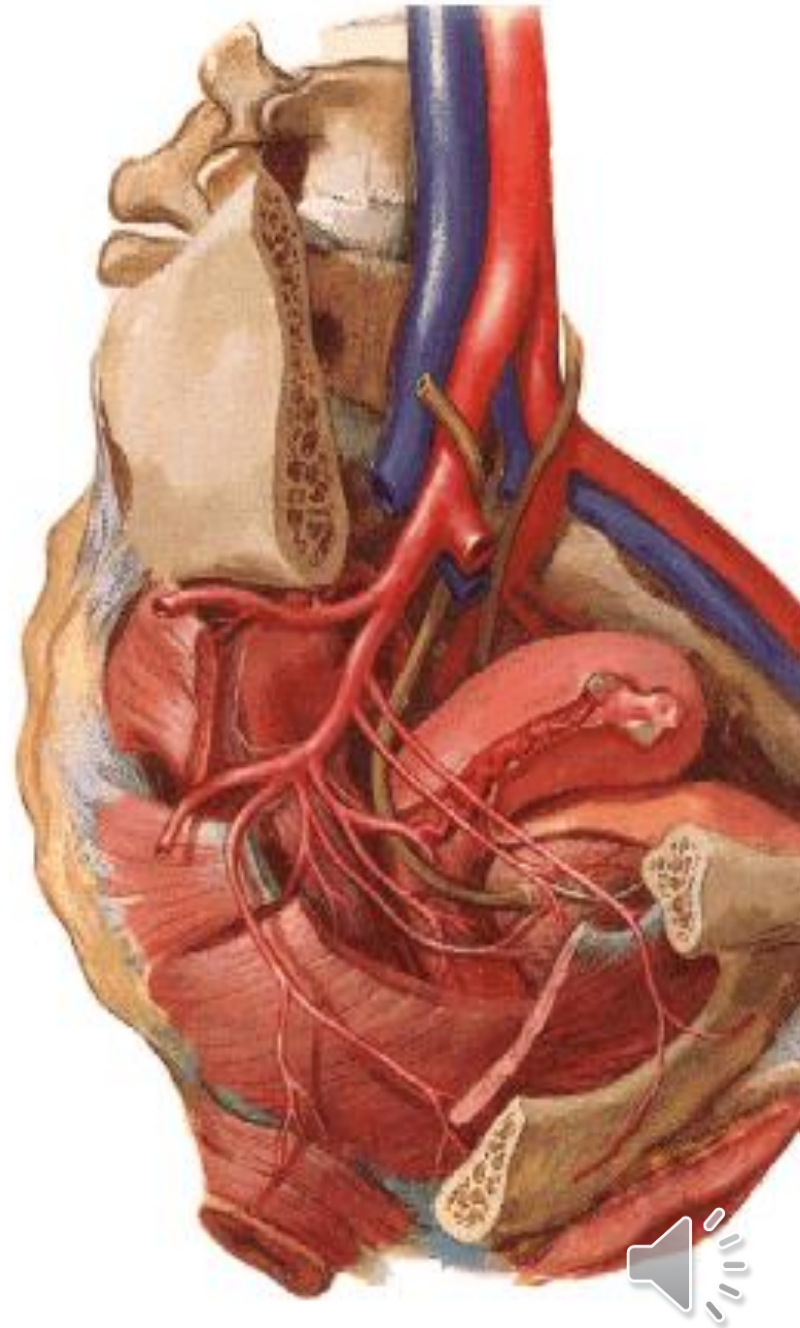
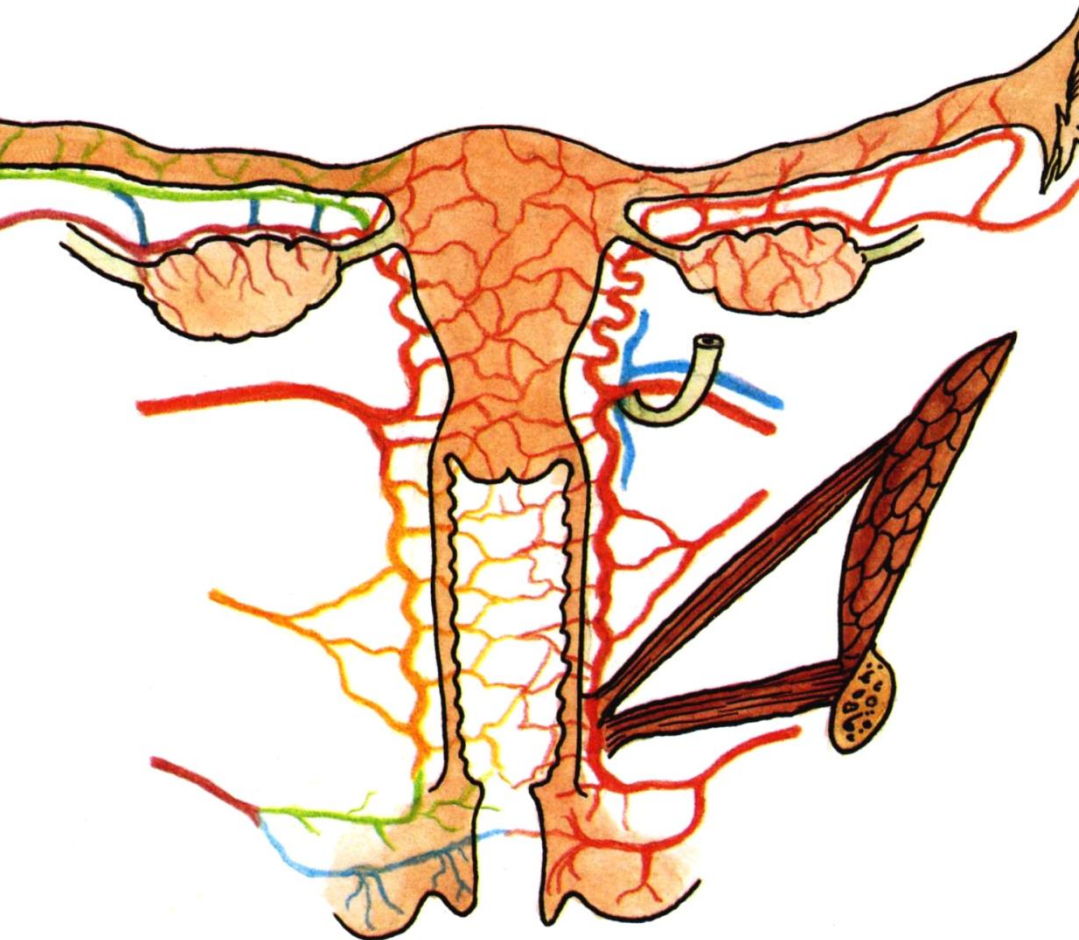


A. ILIACA INT.

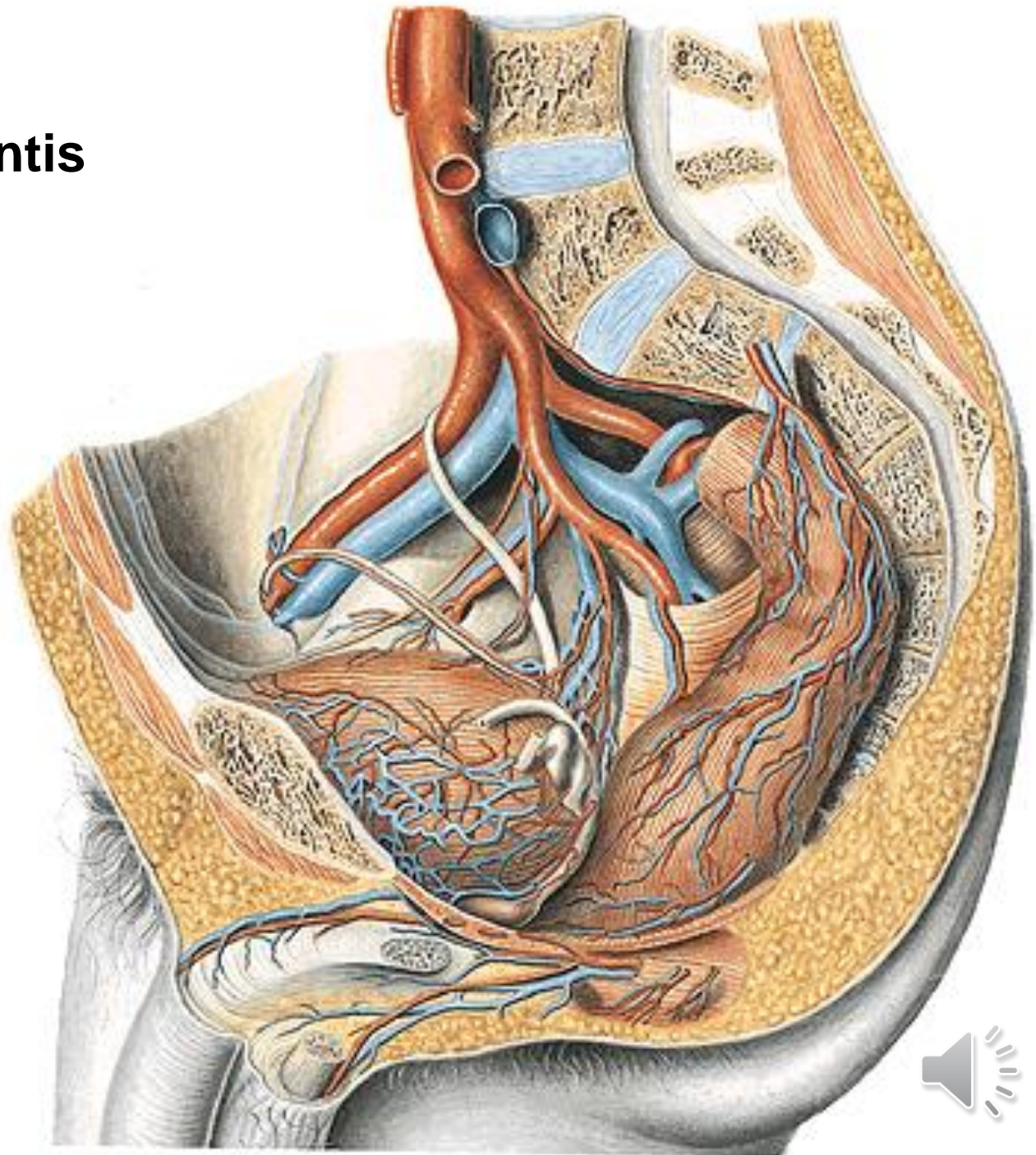
- a. iliolumbalis
- aa. sacrales lat.
- a. obturatoria
- a. glutea sup.
- a. glutea inf.
- a. umbilicalis



A. iliaca int.
- a. uterina



A. ductus deferentis
Rr. prostatici



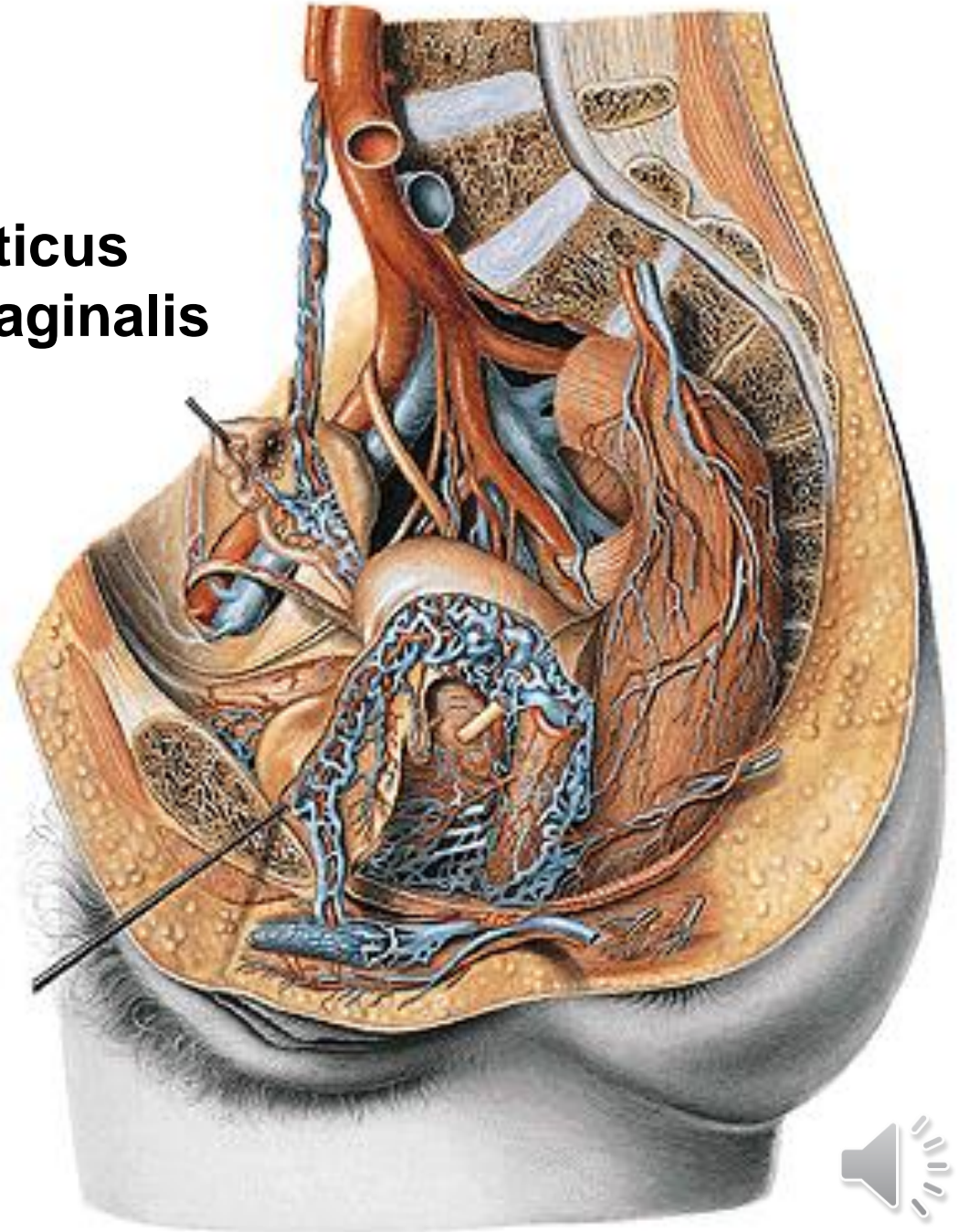
Plexus venosus vesicalis

Plexus venosus rectalis

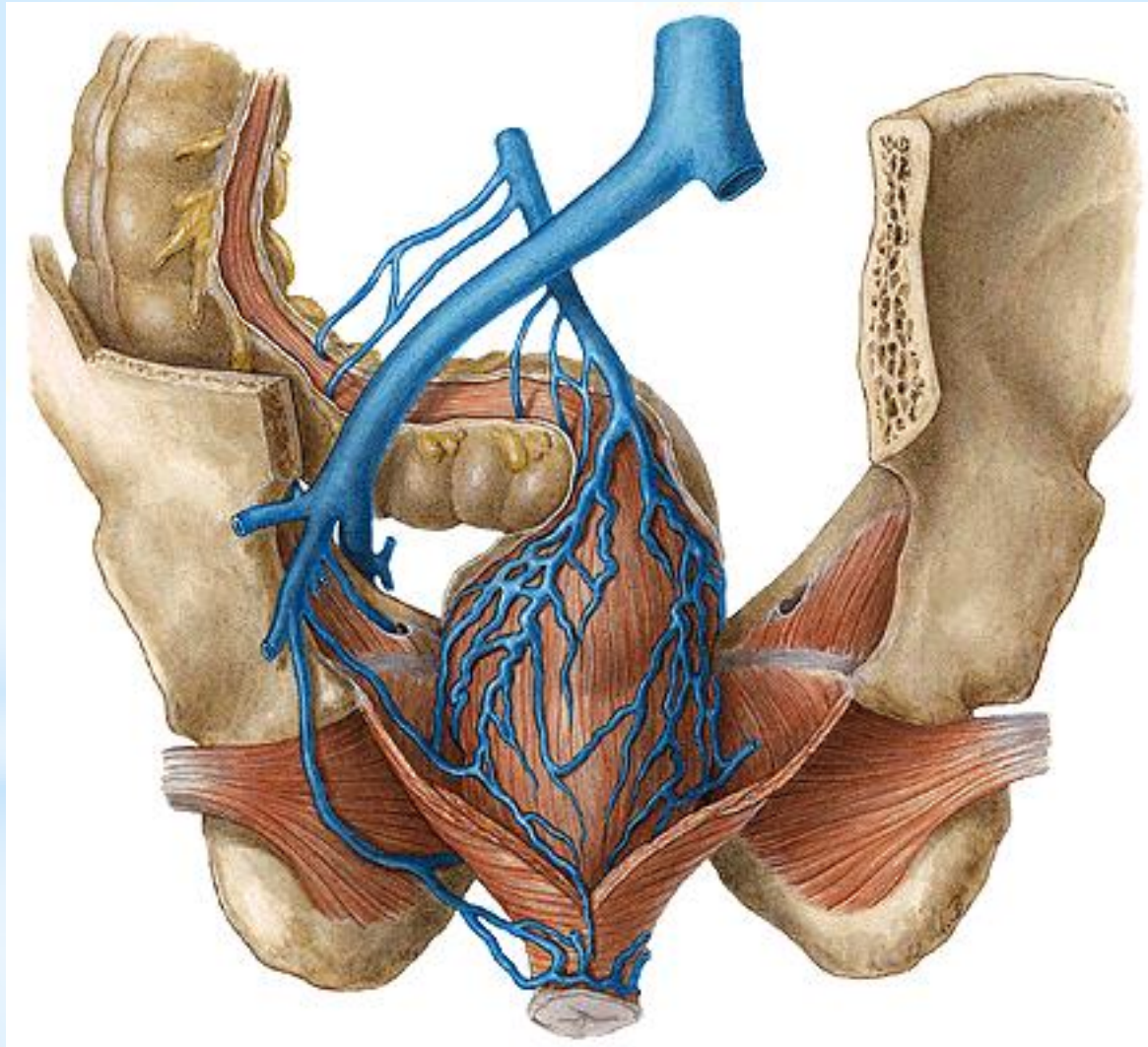
Plexus venosus sacralis

♂ **Plexus venosus prostaticus**

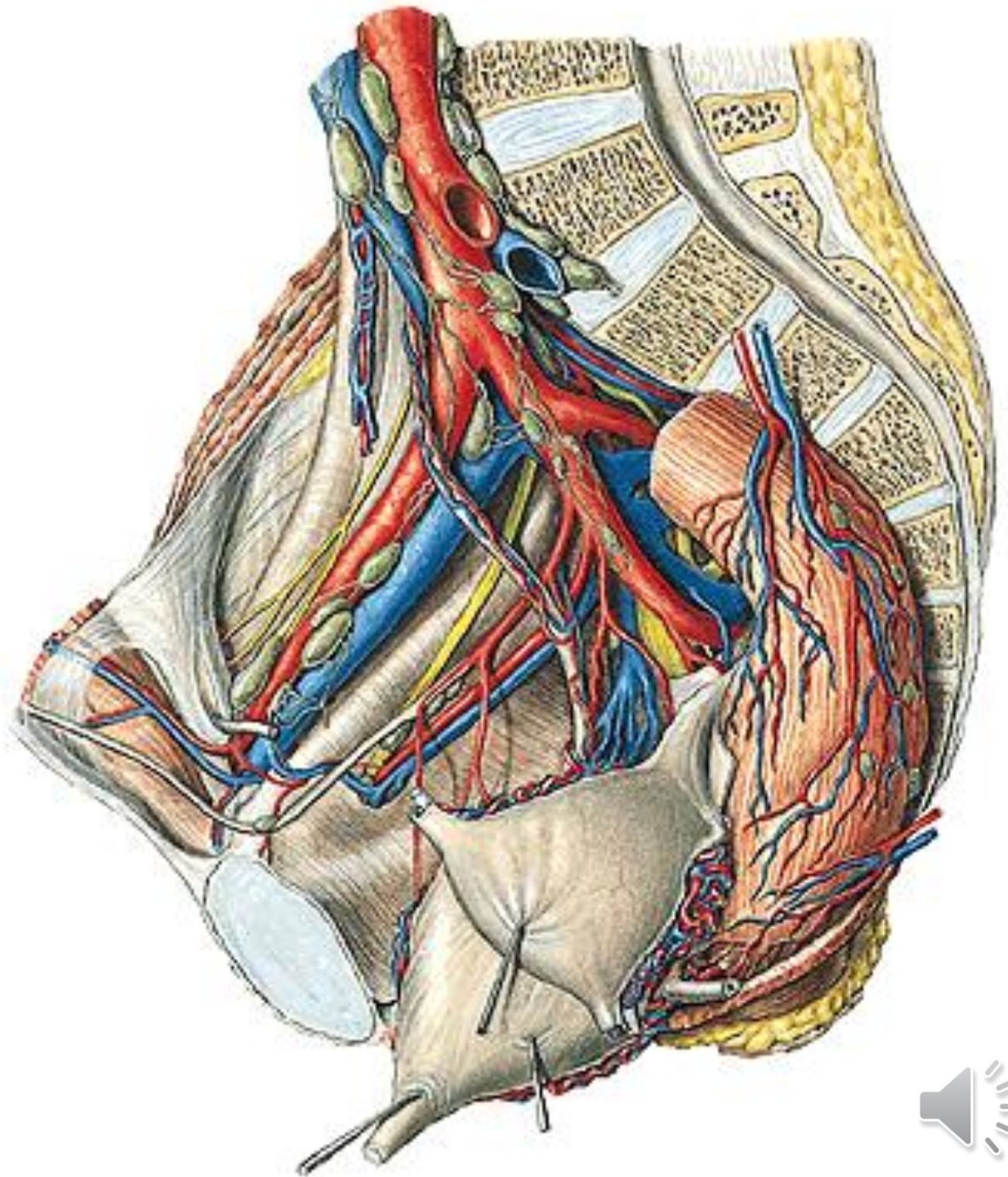
♀ **Plexus venosus uterovaginalis**



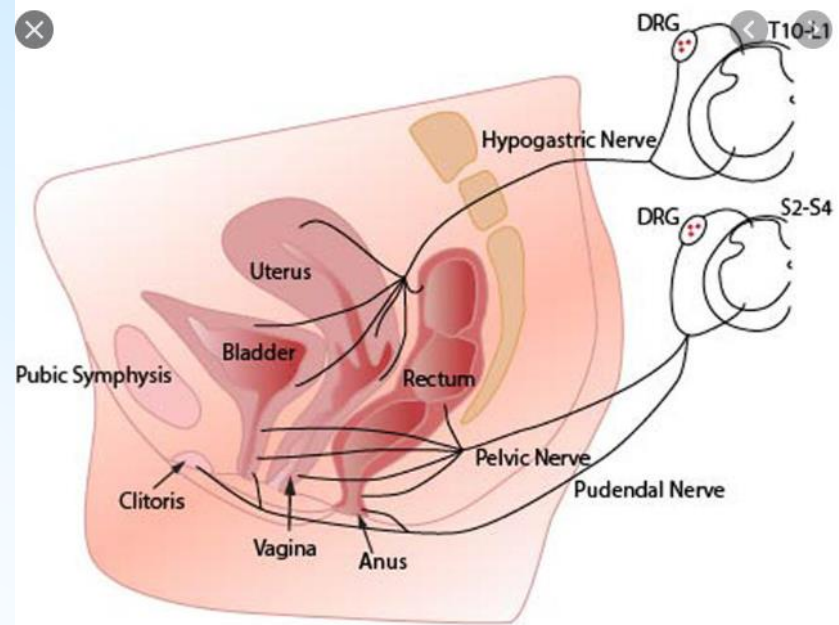
Plexus venosus rectalis – portocaval anastomosis



Nll. iliaci externi
Nll. iliaci interni
Nll. inguinales spf.
Nll. sacrales
Nll. lumbales

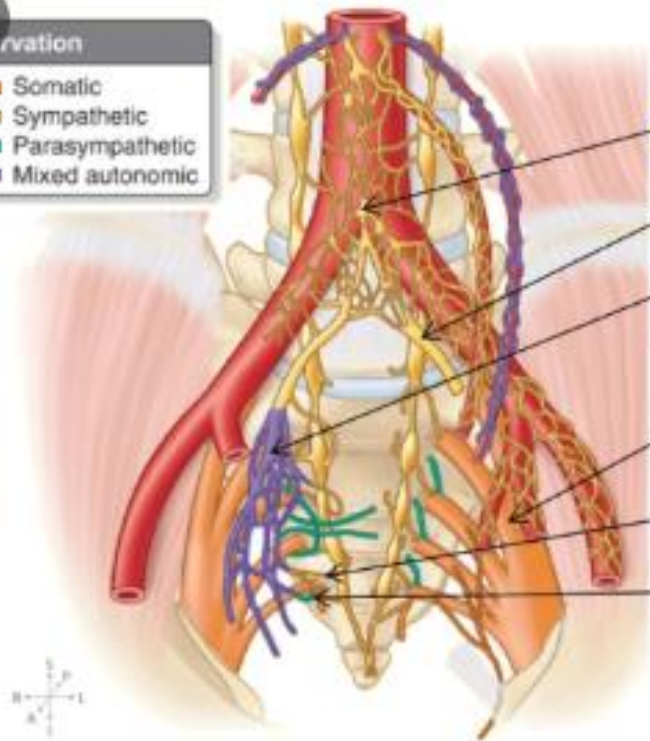


Nerves of pelvic organs

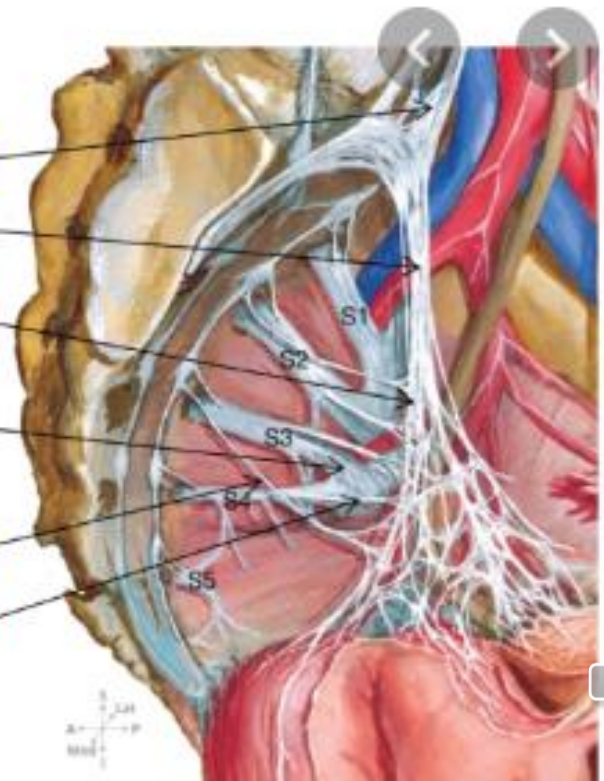


Innervation

- █ Somatic
- █ Sympathetic
- █ Parasympathetic
- █ Mixed autonomic



- superior hypogastric plexus
- hypogastric nerve (1)
- inferior hypogastric plexus (pelvic plexus)
- sacral plexus
- sacral splanchnic nerve (2)
- pelvic splanchnic nerve (3)



Illustrations were copied from:

Čihák R: Anatomie 2 (Splanchnologia). Avicenum, zdravotnické nakladatelství, Praha, 1988.

Atlas der Anatomie des Menschen/Sobotta.

Putz,R., und Pabst,R. 20. Auflage. München:

Urban & Schwarzenberg, 1993