

Scenario

A small exercise to think about the general approach to a major incident.
Focus on a. general initial response and b. anticipated major issues

Scenario

1040 emergency dispatch gets first call concerning a traffic accident near Aravete. A freight truck has just collided into an intercity bus and a hatchback. Your EMS brigade is dispatched onto the scene

1044 local emergency service brigade reaches scene, reports moderate damage to the freighter and hatch and heavy damage to the bus which has also rolled over. Estimated 30 to 40 casualties. Fluid leakage from the bus. Two additional local EMS teams are dispatched

1056 you arrive at the scene.



hatchback

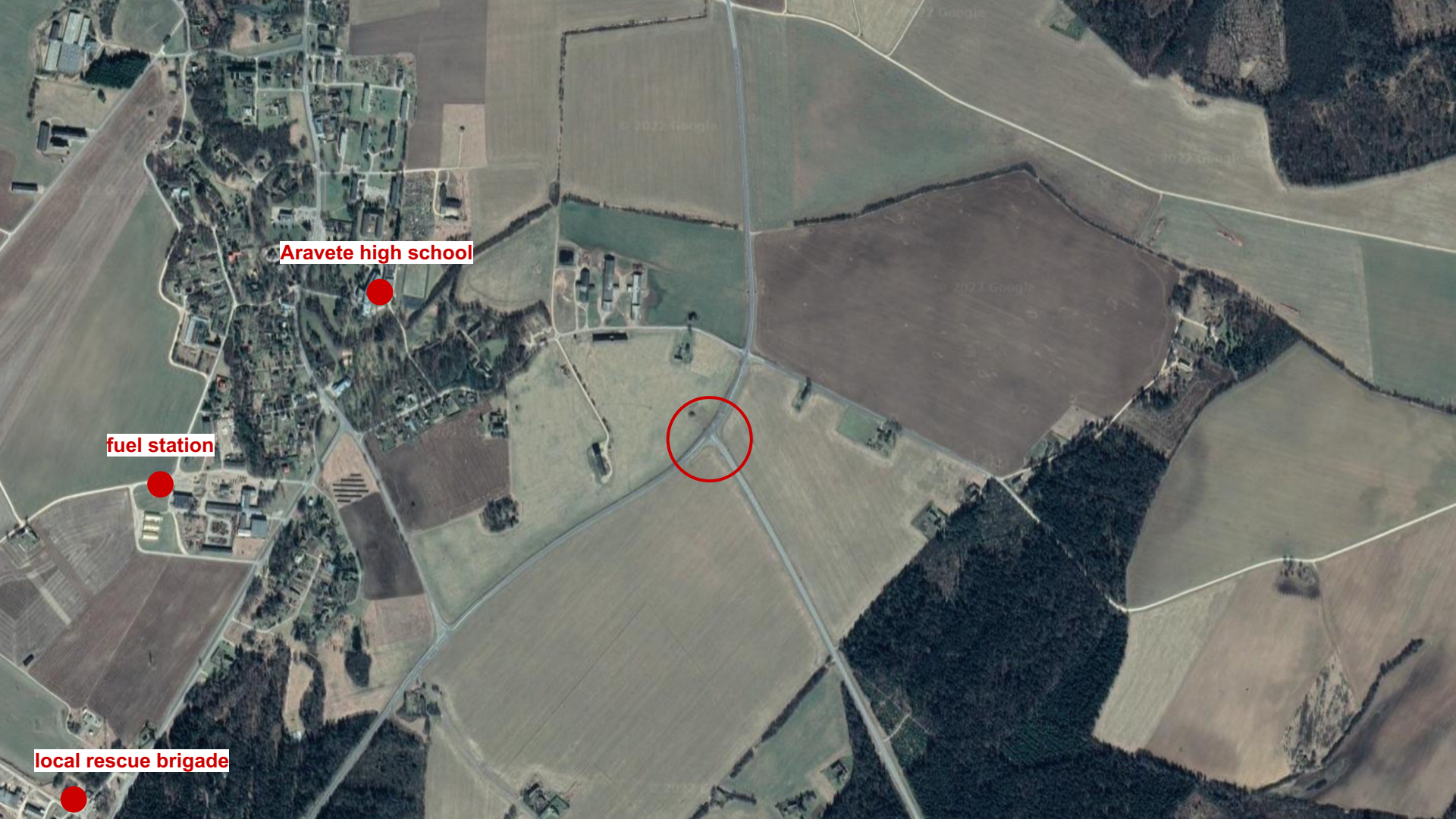


bus



truck





Aravete high school



fuel station



local rescue brigade



On arrival

the bus has rolled to the side into a ditch, there is heavy damage to the front left side

the truck has moderate damage to the front

the hatchback has moderate damage to front left and is ~20 m off road

the rescue brigade is gaining access to the bus

two people from the hatchback are running towards you as you arrive

Consider:

first - what is your first response? initial order of action?

C - who will take authority on scene? where would you establish the inner and outer cordons? bronze, silver area? ACP, CCS, ALP?

S - what kind of safety hazards would you expect? what are priorities for survivors safety?

C - what kind of communication devices would be necessary for this situation?

A - METHANE report? is this a major incident? a MASCAL?

T - who and when starts performing triage? do you need to utilise T4?

T - CCS location again. Extent of aid?

T - where would you transport the casualties? what types of transport are needed?

