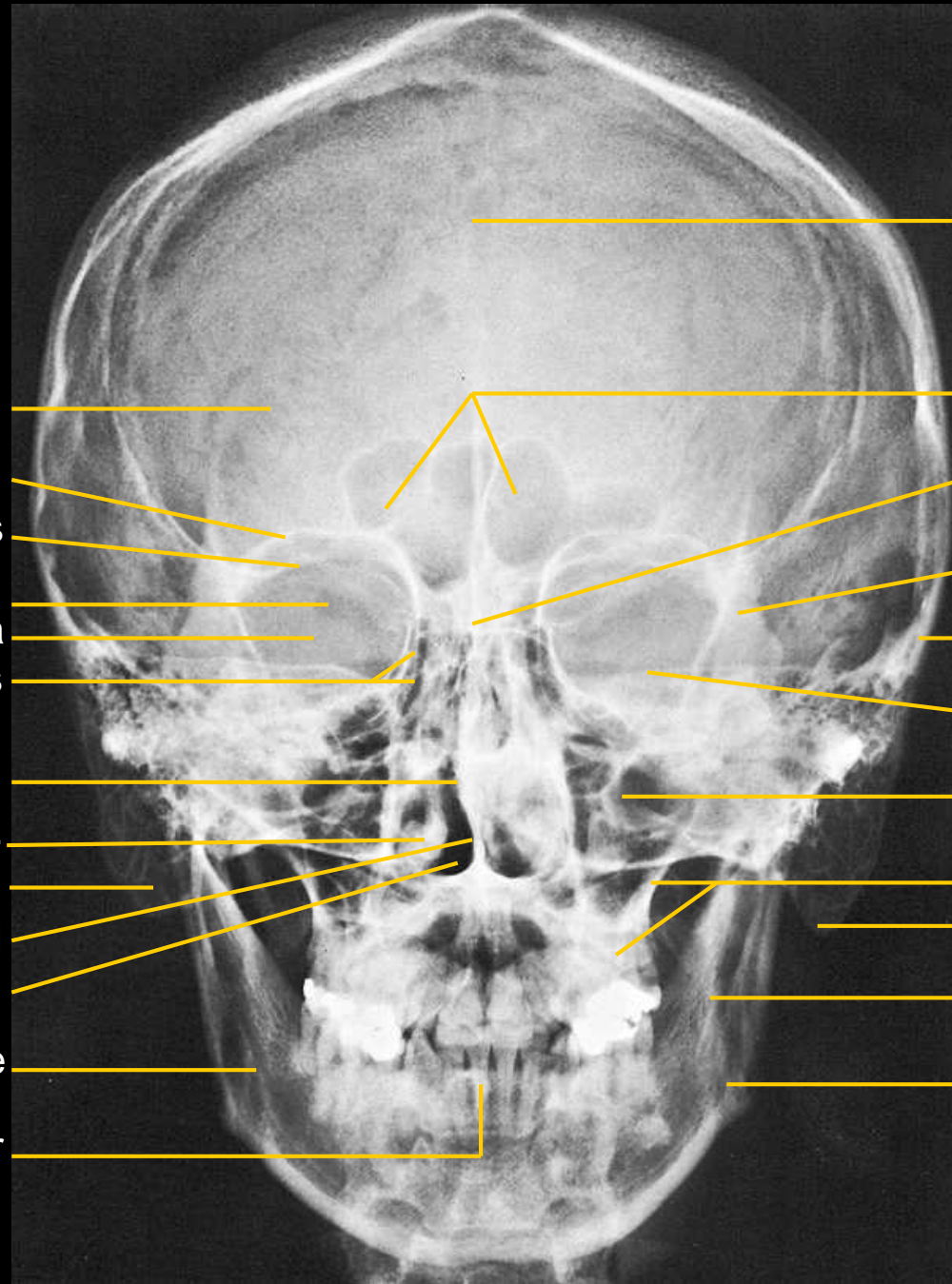


X-rays with descriptions

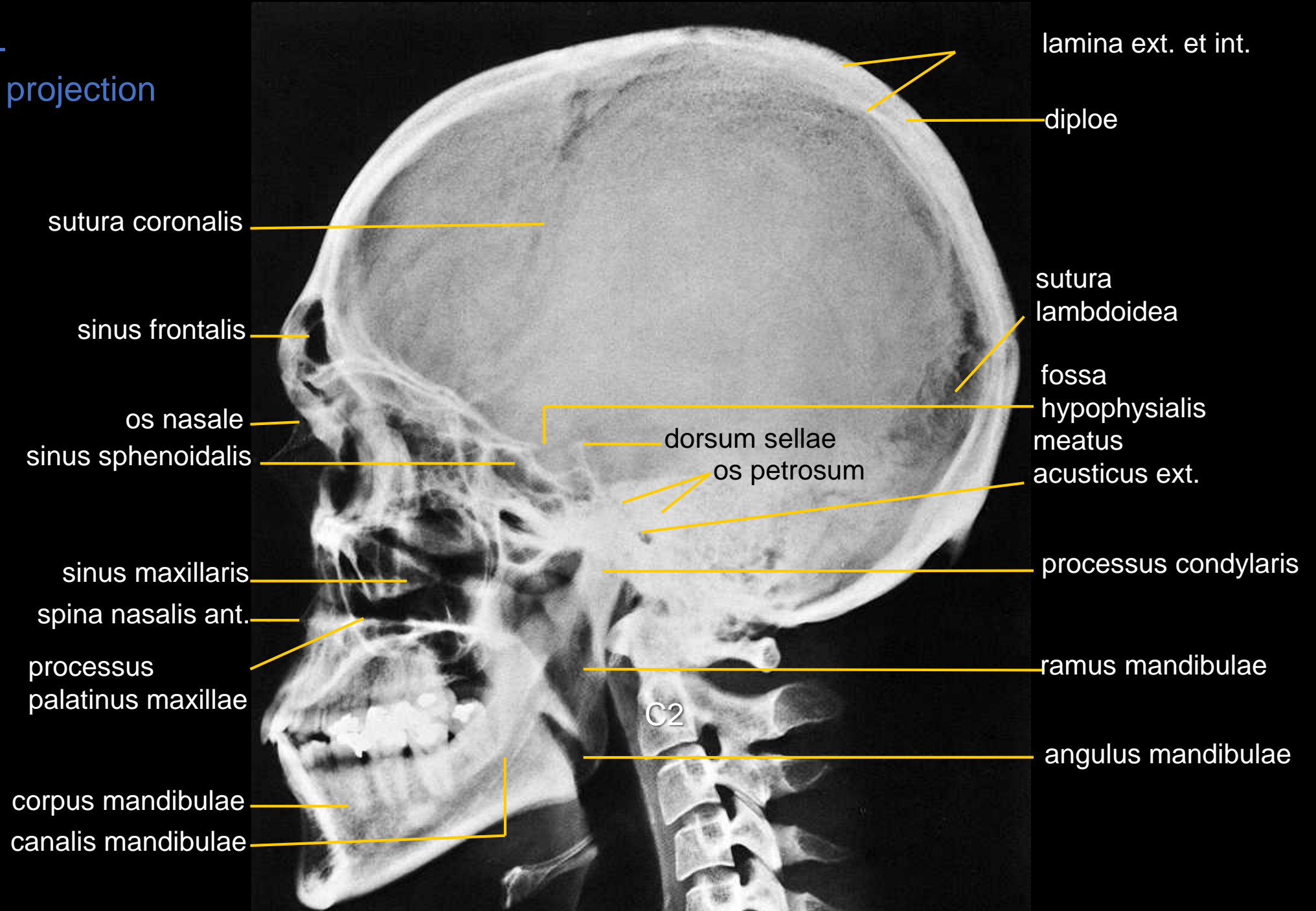
Head -
sagittal projection

sutura lambdoidea
roof of the orbit
margo supraorbitalis
fissura orbitalis sup.
orbita
celullae ethmoidales
septum nasi
concha nasalis inf.
cellulae mastoideae
septum nasi
cavum nasi
canalis mandibulae
lower incisor



sutura sagittalis
sinus frontalis
lamina cribrosa ossis ethmoidalis
sutura frontozygomatica
arcus zygomaticus
upper margin of the petrosal
sinus maxillaris
maxilla
processus mastoideus
ramus mandibulae
angulus mandibulae

Head -
lateral projection



lamina ext. et int.

diploe

sutura coronalis

sinus frontalis

os nasale

sinus sphenoidalis

sinus maxillaris

spina nasalis ant.

processus
palatinus maxillae

corpus mandibulae

canalis mandibulae

dorsum sellae

os petrosum

sutura
lambdoidea

fossa
hypophysialis
meatus
acusticus ext.

processus condylaris

ramus mandibulae

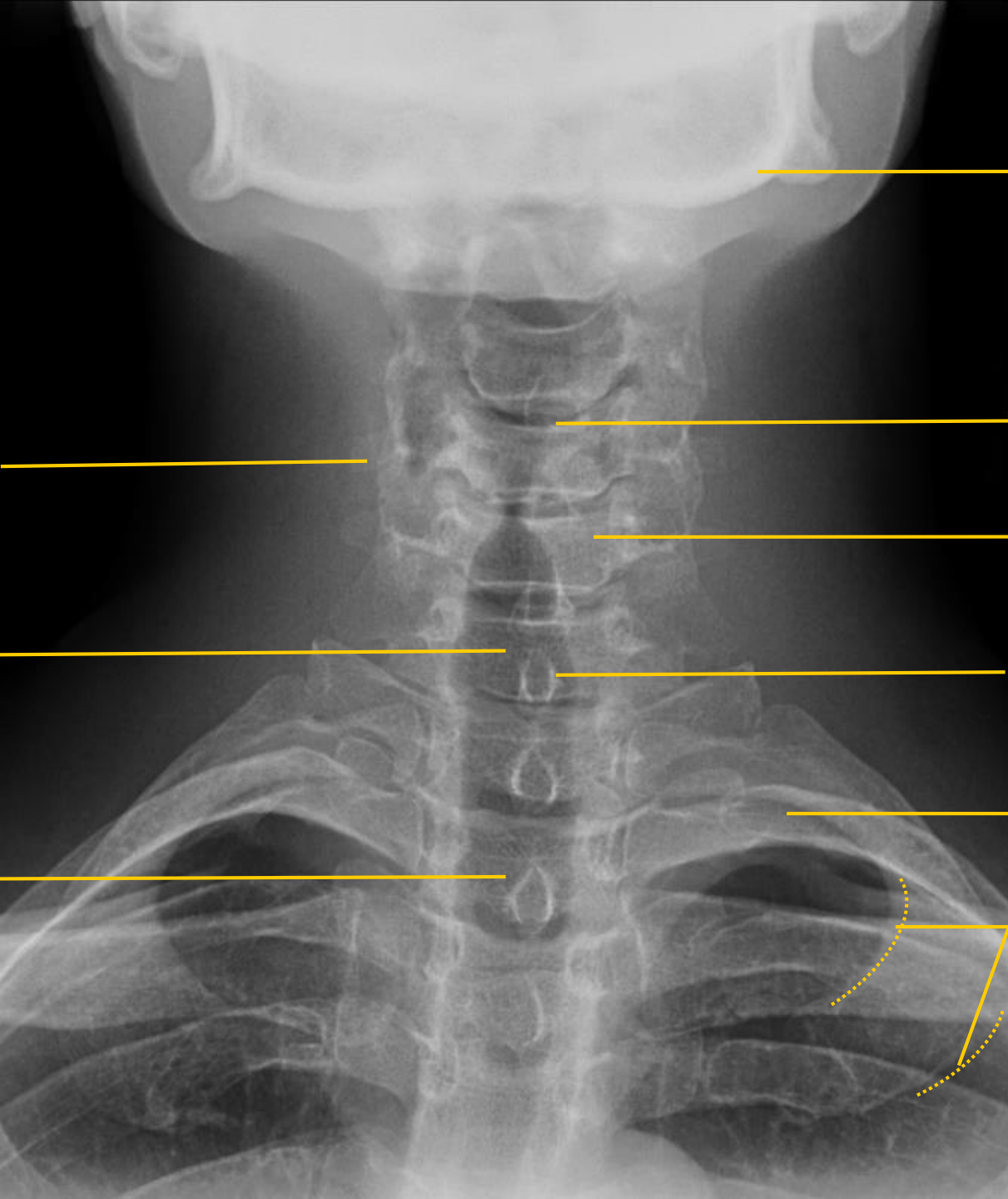
angulus mandibulae

C2

Spine

- cervical part

sagittal projection



mandibula

discus intervertebralis

corpus vertebrae

processus spinosus

clavicula

first rib

processus transversus

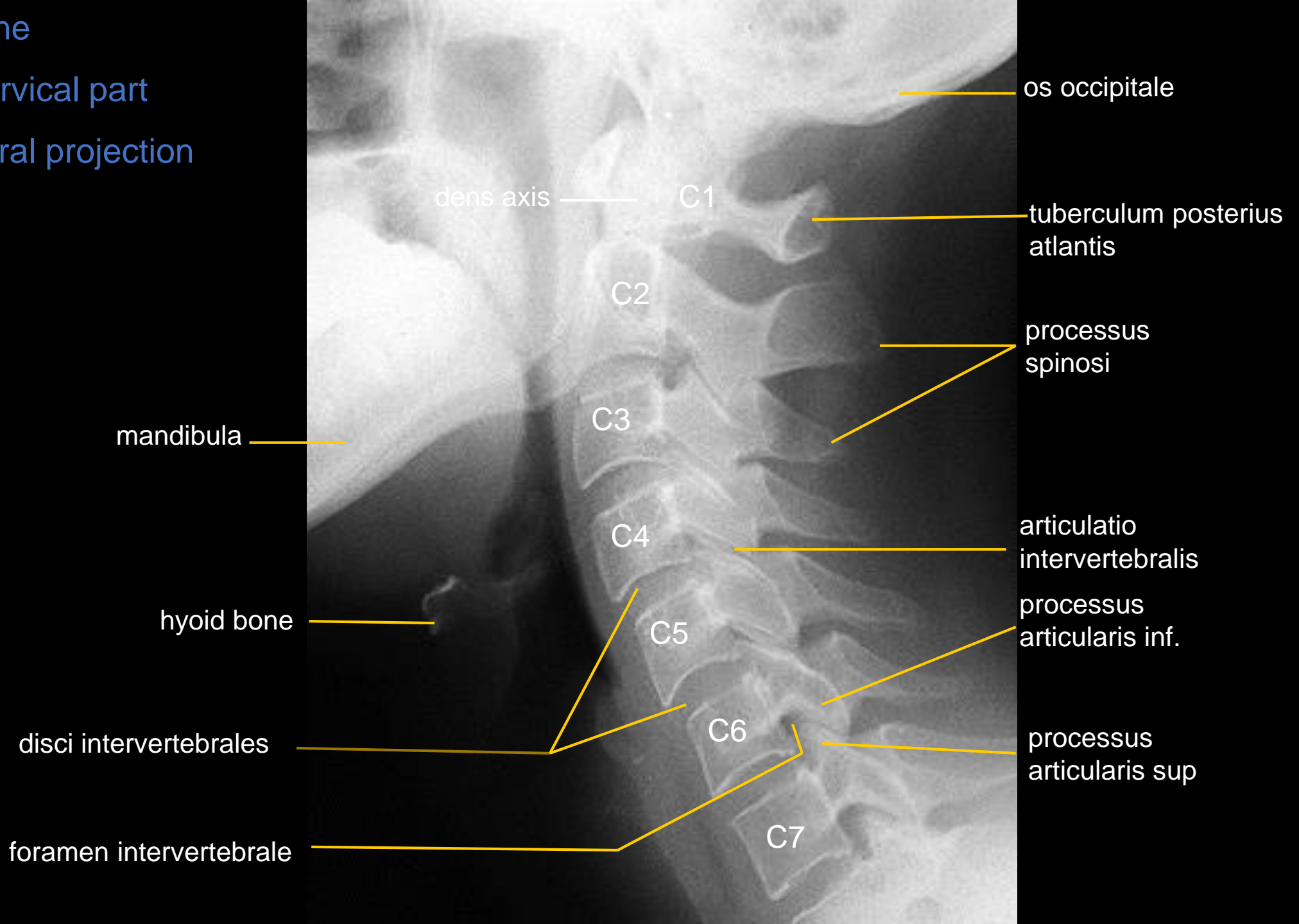
C vertebra

T vertebra

Spine

- cervical part

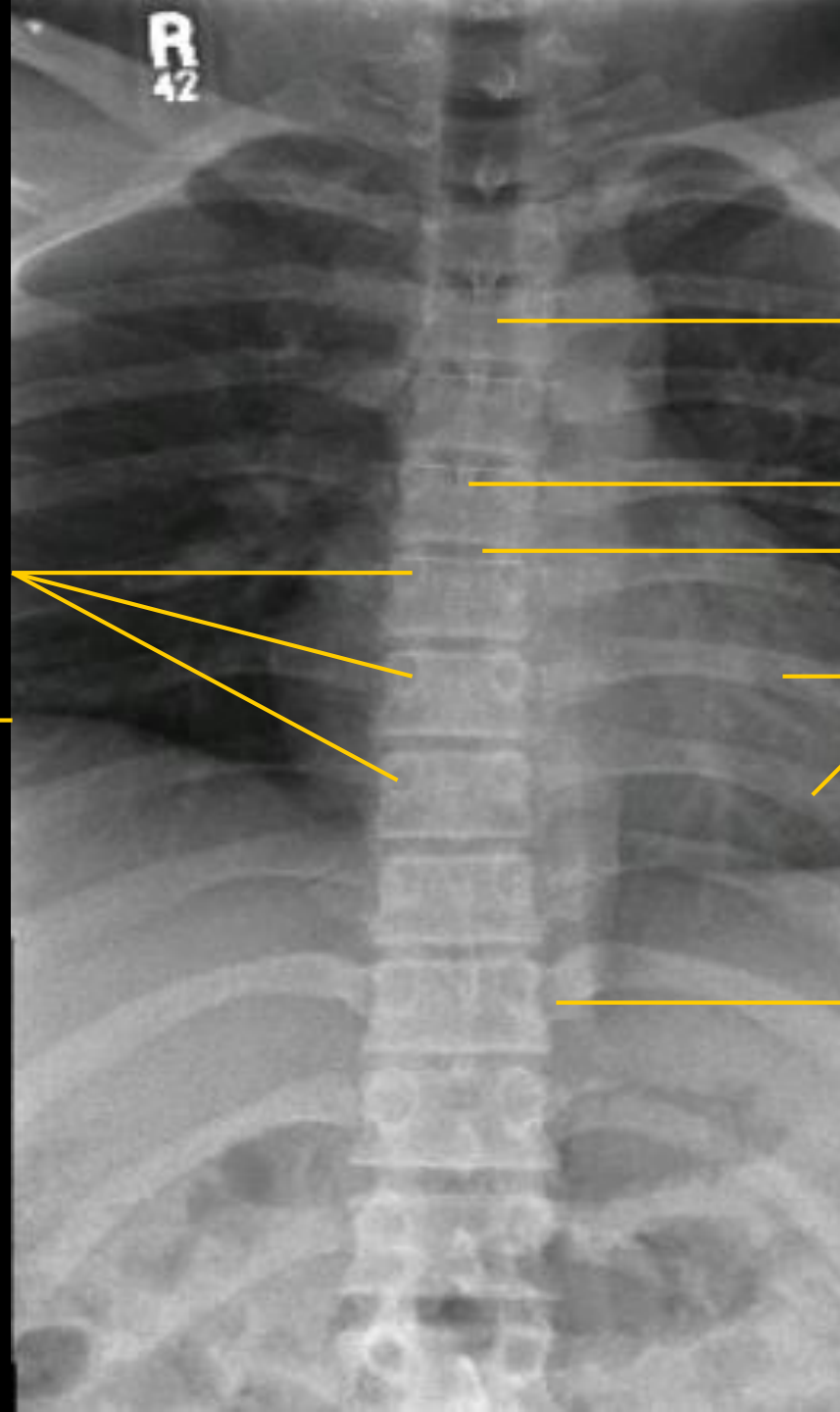
lateral projection



Spine

– thoracic part

sagittal projection



body of the thoracic vertebra

processus spinosus

discus intervertebralis

pediculi arcus vertebrarum

ribs

diaphragmatic dome

articulatio costovertebralis

Spine

– thoracic part

lateral projection



ribs

body of the vertebra

discus intervertebralis

Spine

– lumbar part

sagittal projection

corpus vertebrae
discus intervertebralis

processus spinosus

the lowest rib

pediculus arcus vertebrae

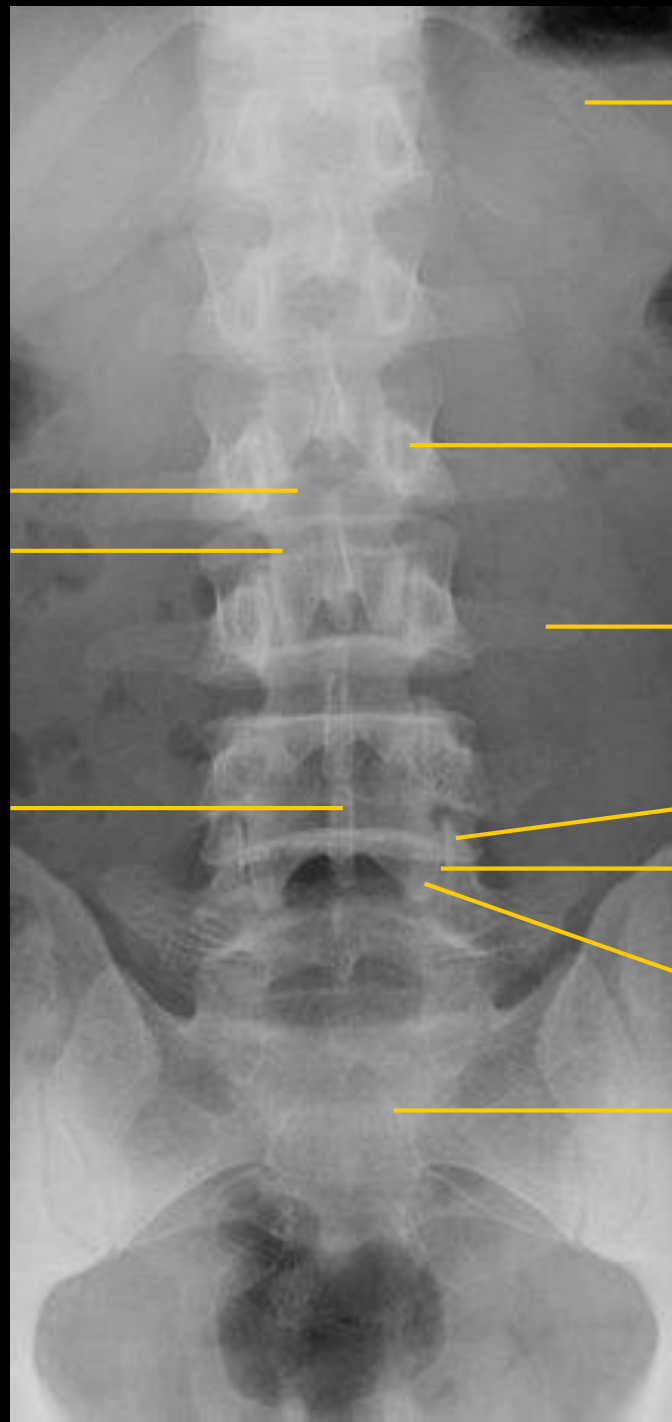
processus costalis

processus articularis sup.

articulatio intervertebralis

processus articularis inf.

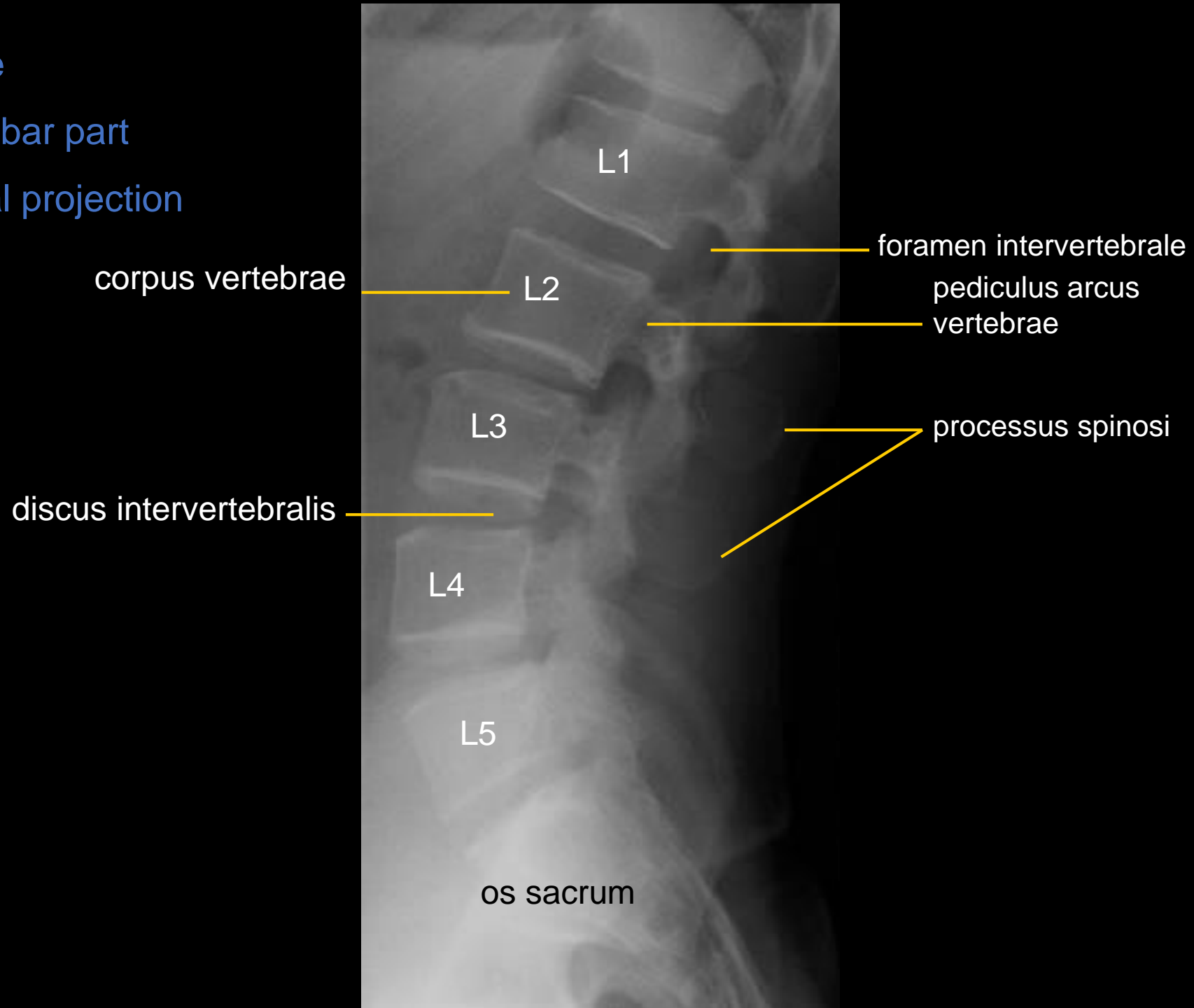
os sacrum



Spine

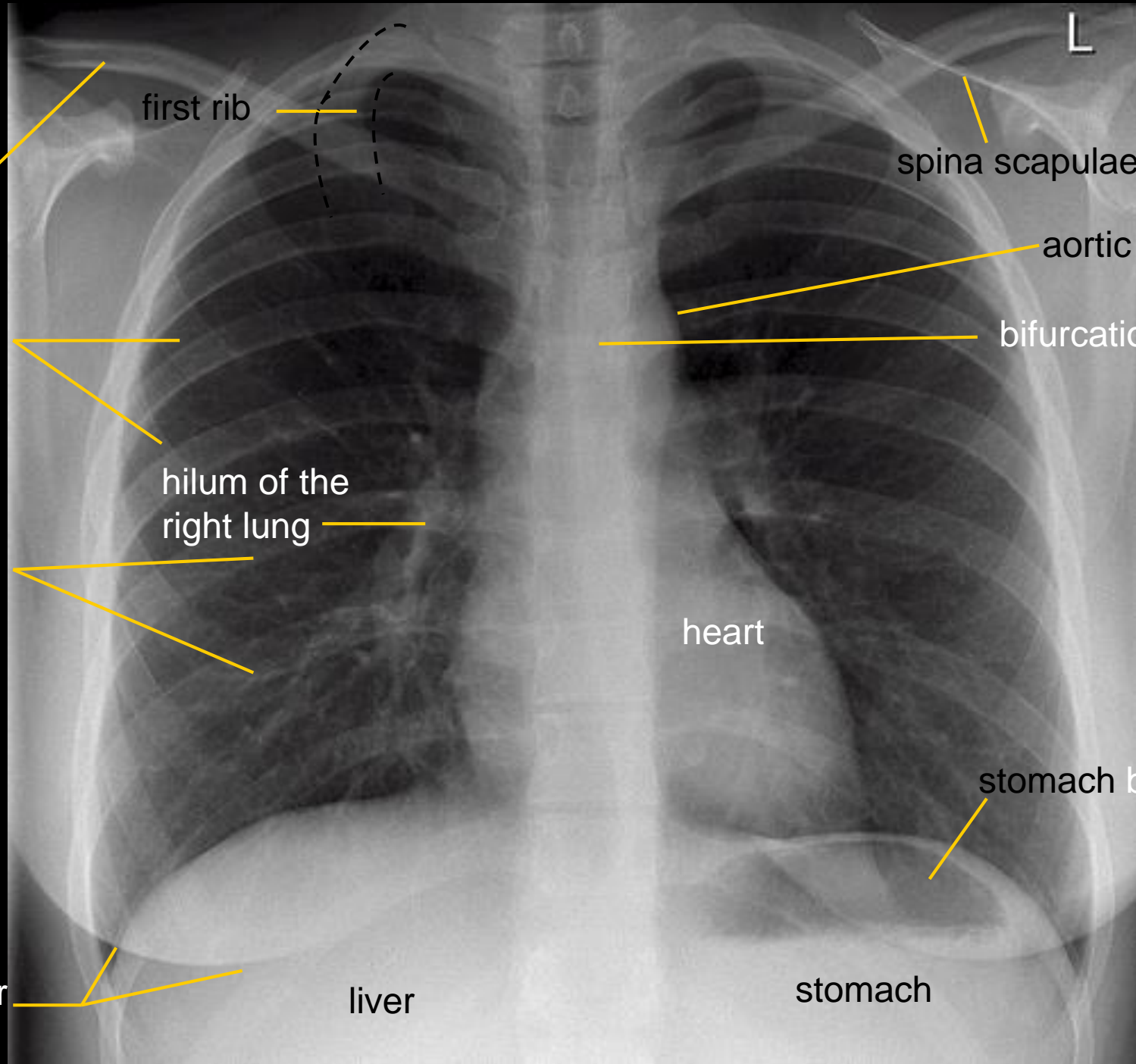
– lumbar part

lateral projection



Thorax

sagittal projection



clavicle

ribs
(anterior parts)

ribs
(posterior parts)

breast border

first rib

hilum of the
right lung

liver

L

spina scapulae

aortic arch

bifurcation of the trachea

heart

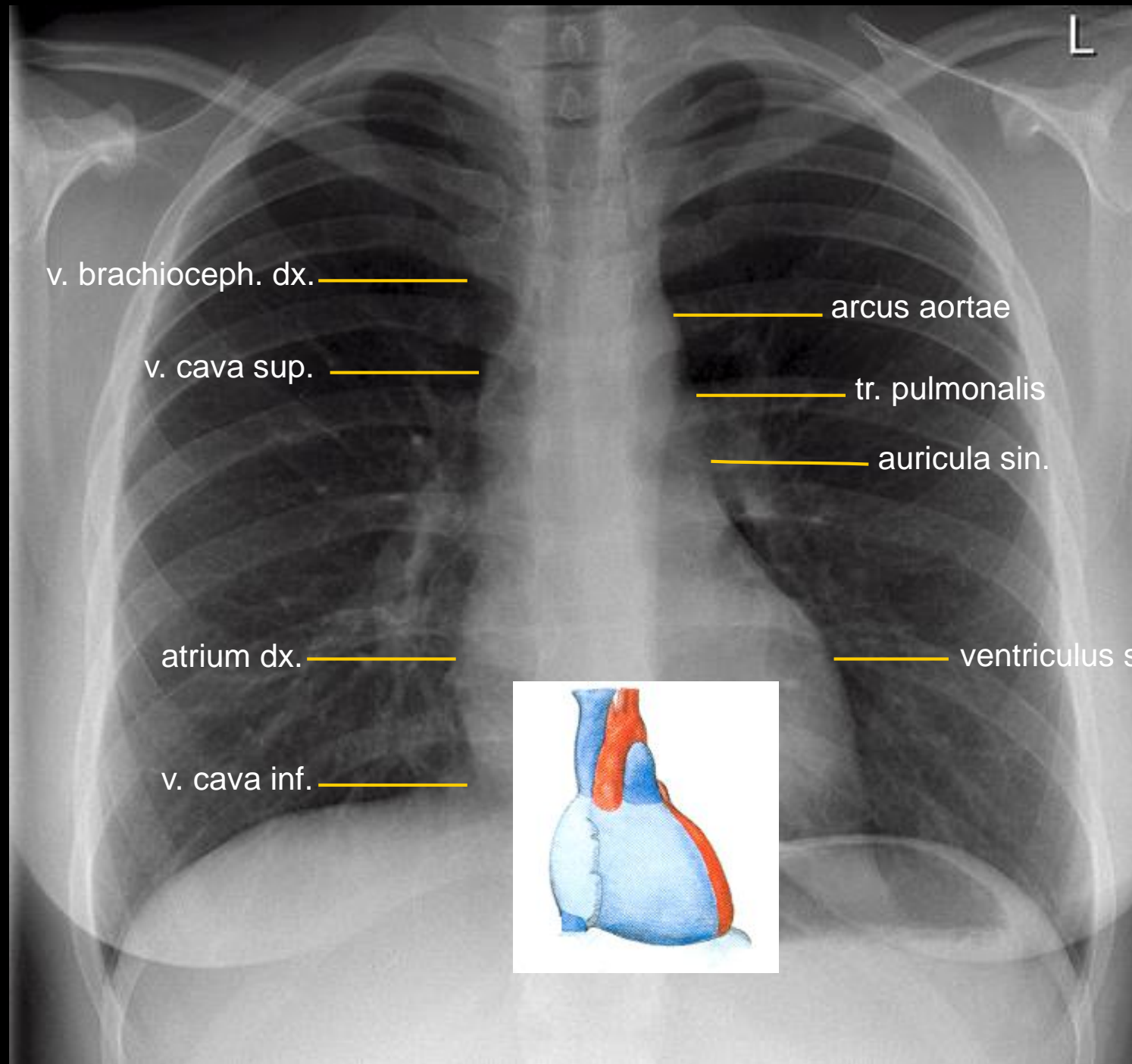
stomach bubble

stomach

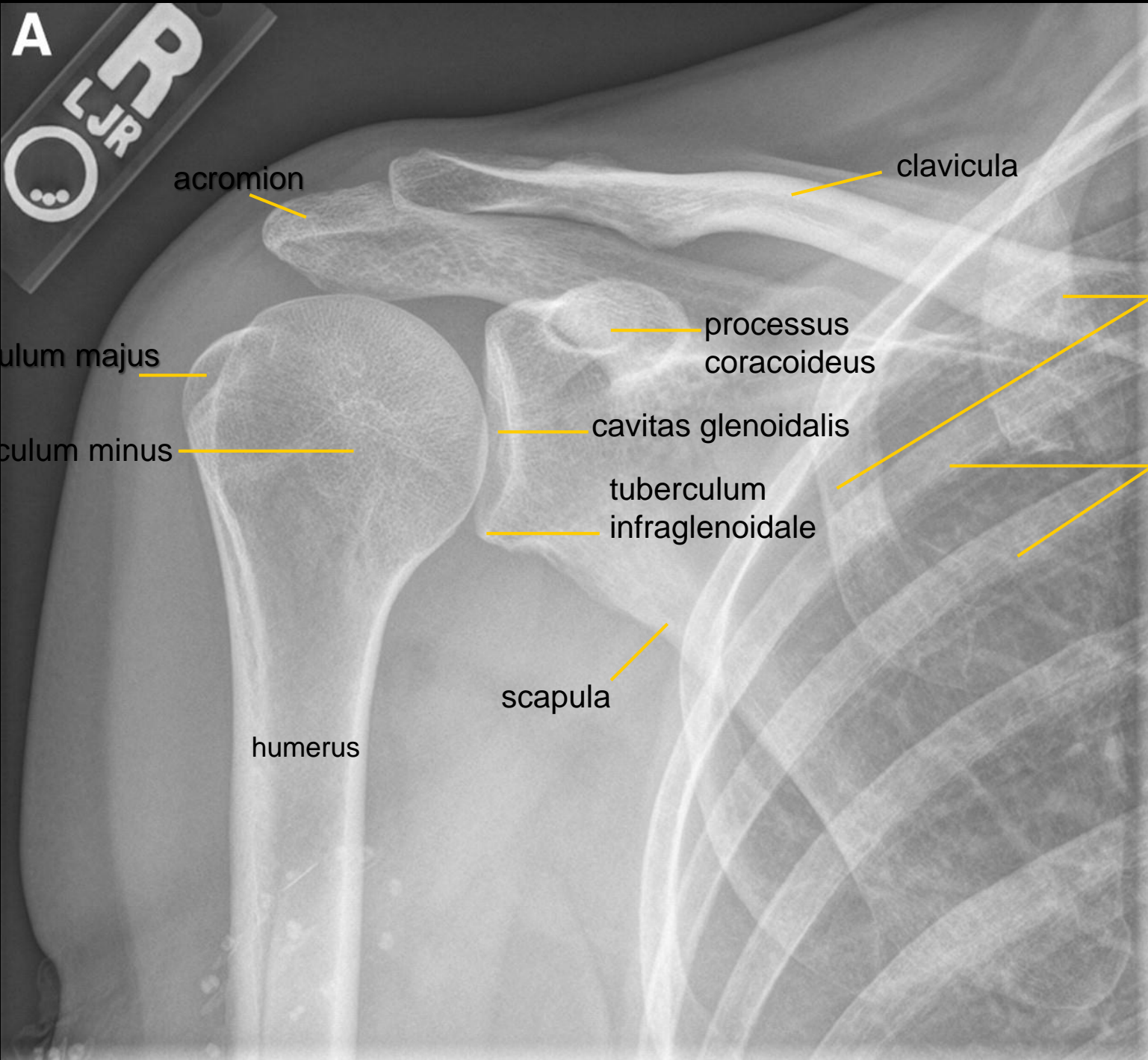
Thorax

sagittal projection

heart shadow



Shoulder
sagittal projection



A
R
LJR

acromion

clavicula

tuberculum majus

processus
coracoideus

anterior
parts of
ribs

tuberculum minus

cavitas glenoidalis

posterior
parts of
ribs

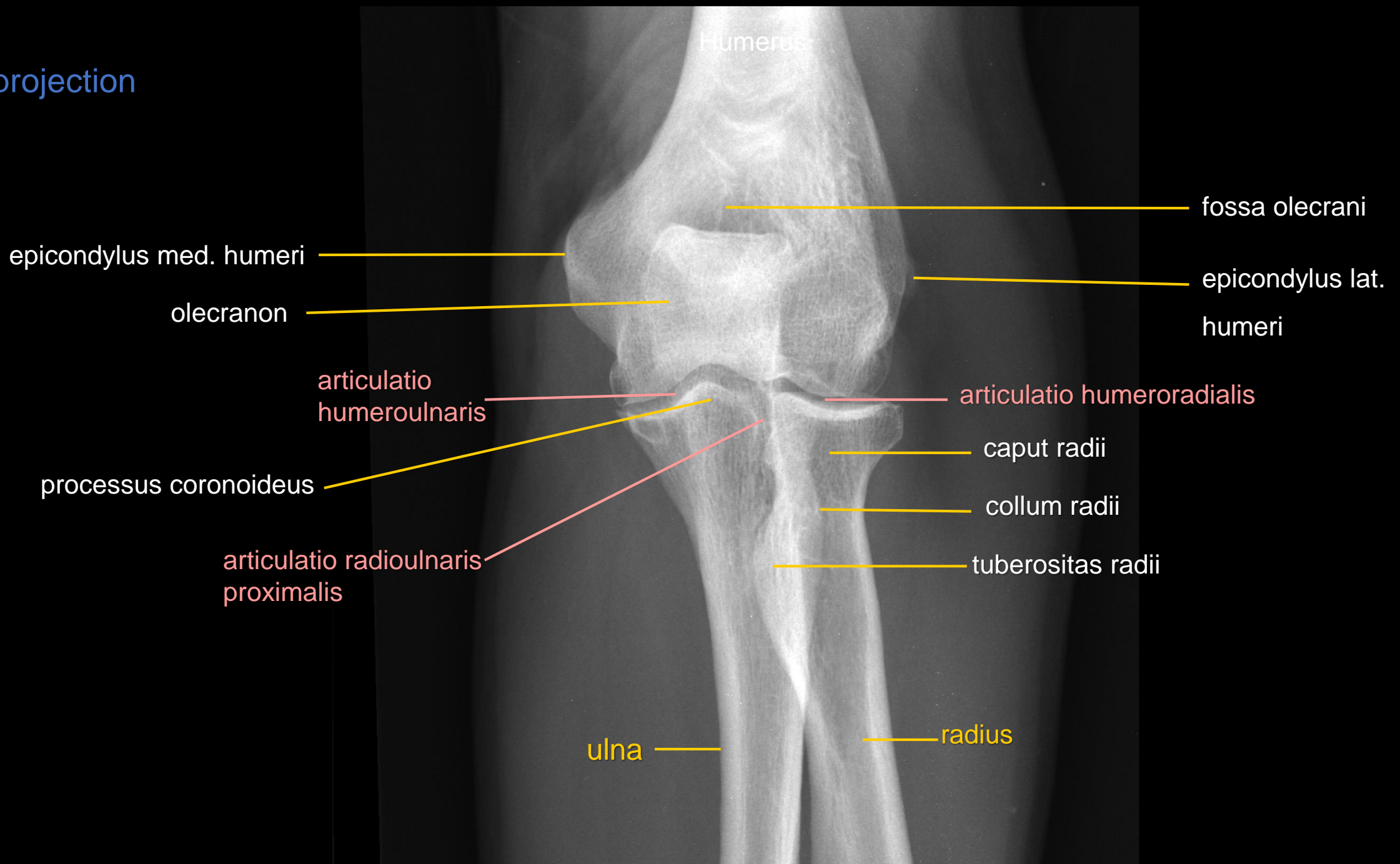
tuberculum
infraglenoidale

scapula

humerus

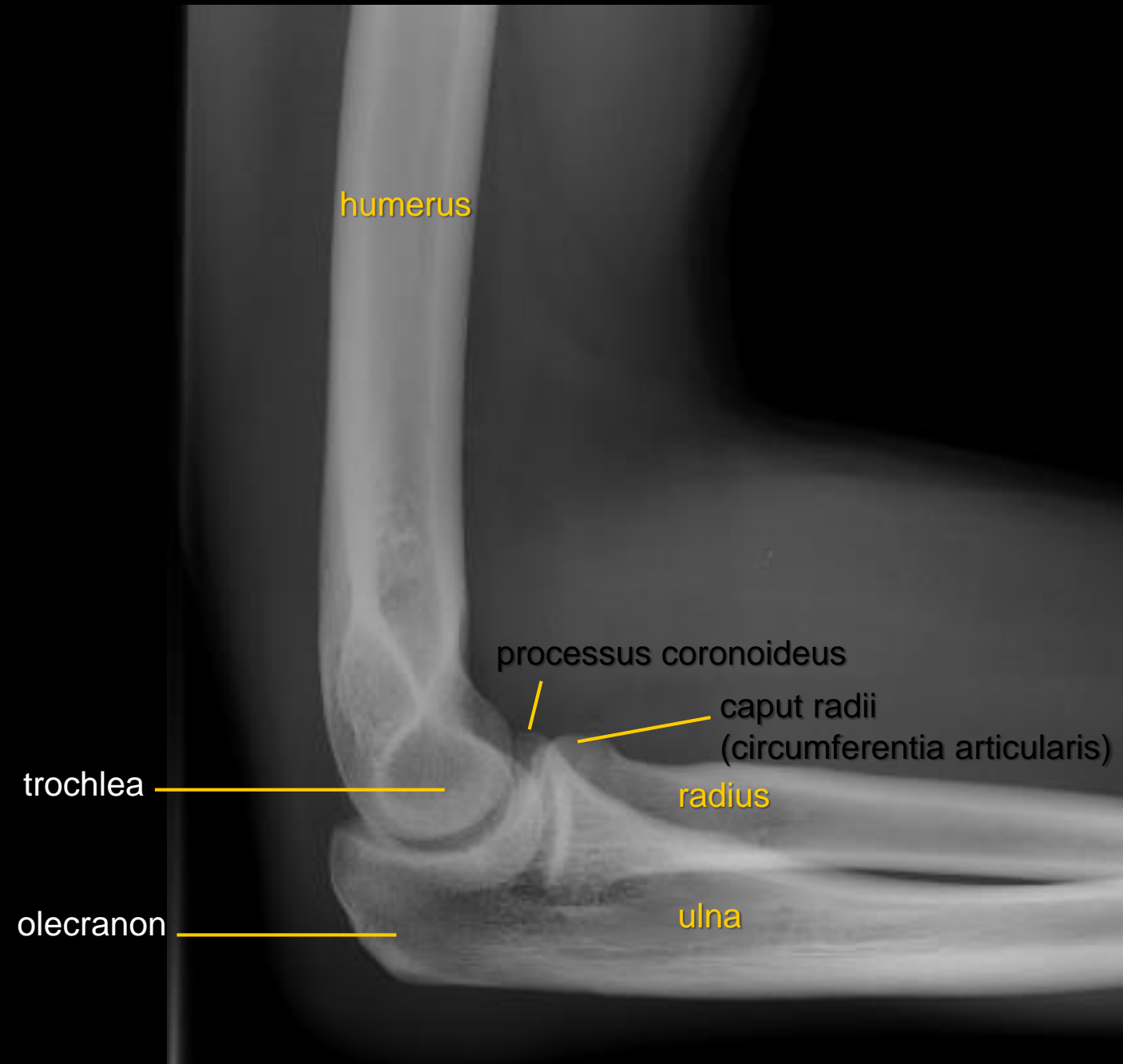
Elbow

sagittal projection

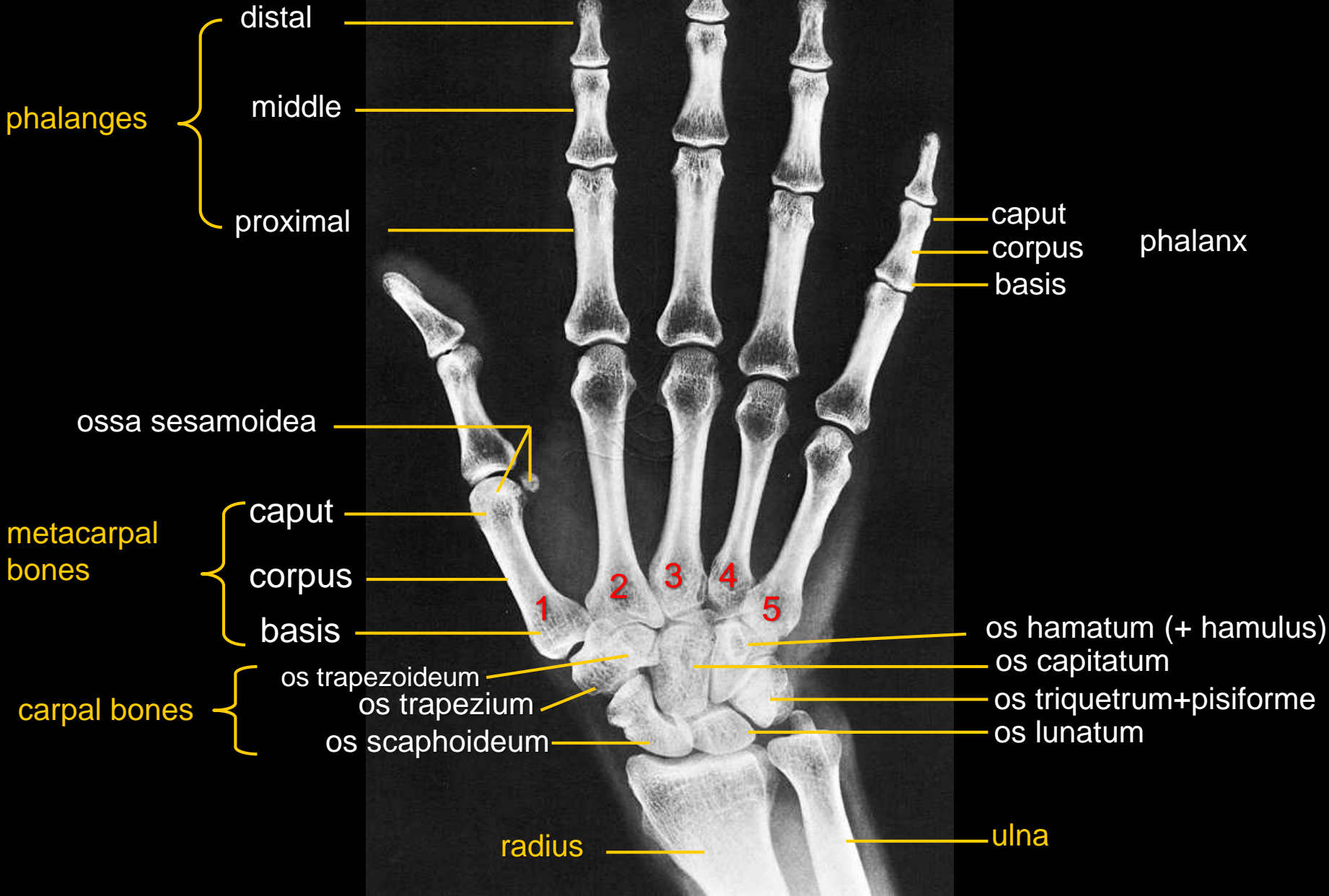


Elbow

lateral projection



Hand - adult
dorsopalmar projection



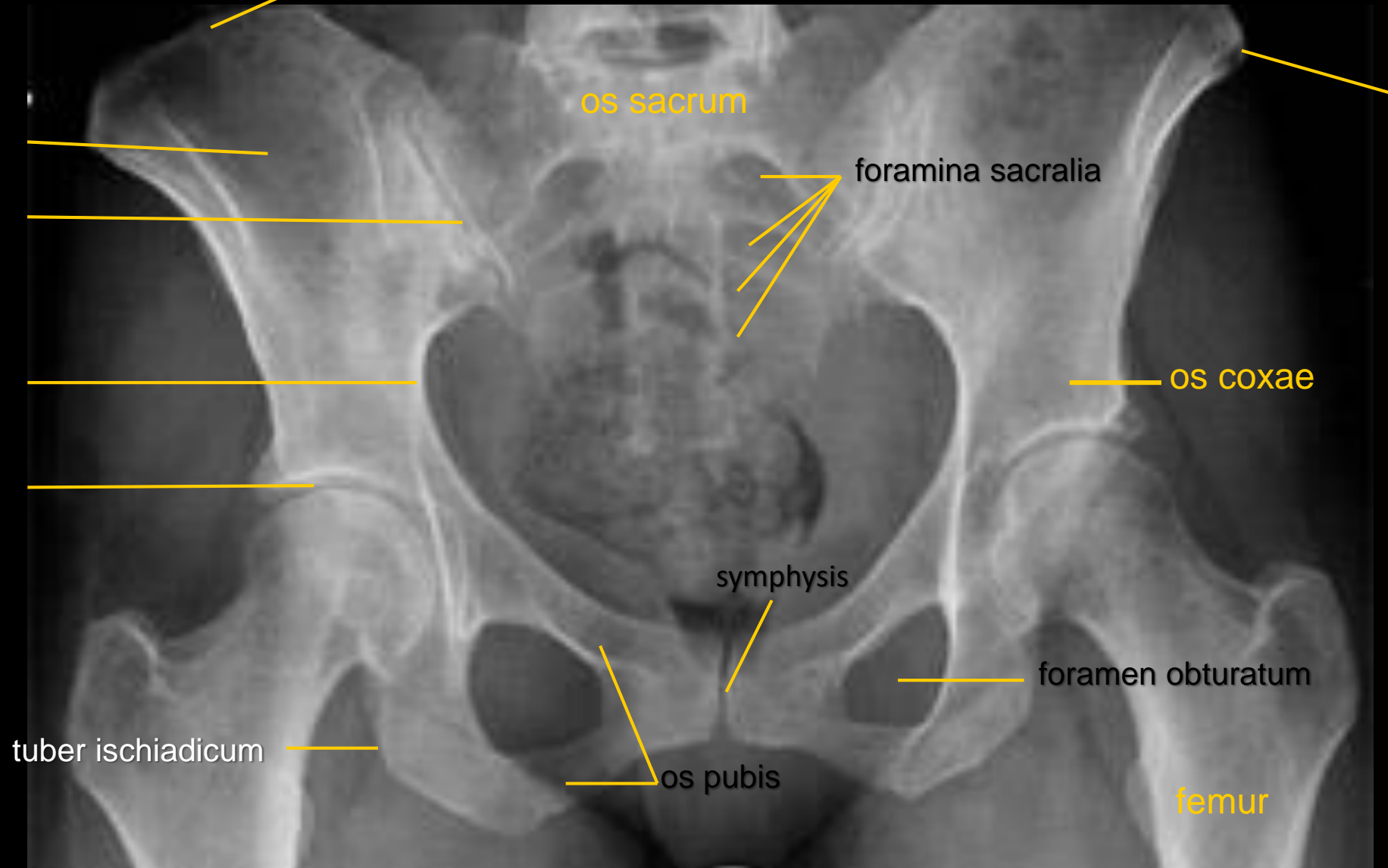
Hand - child

4,5 years



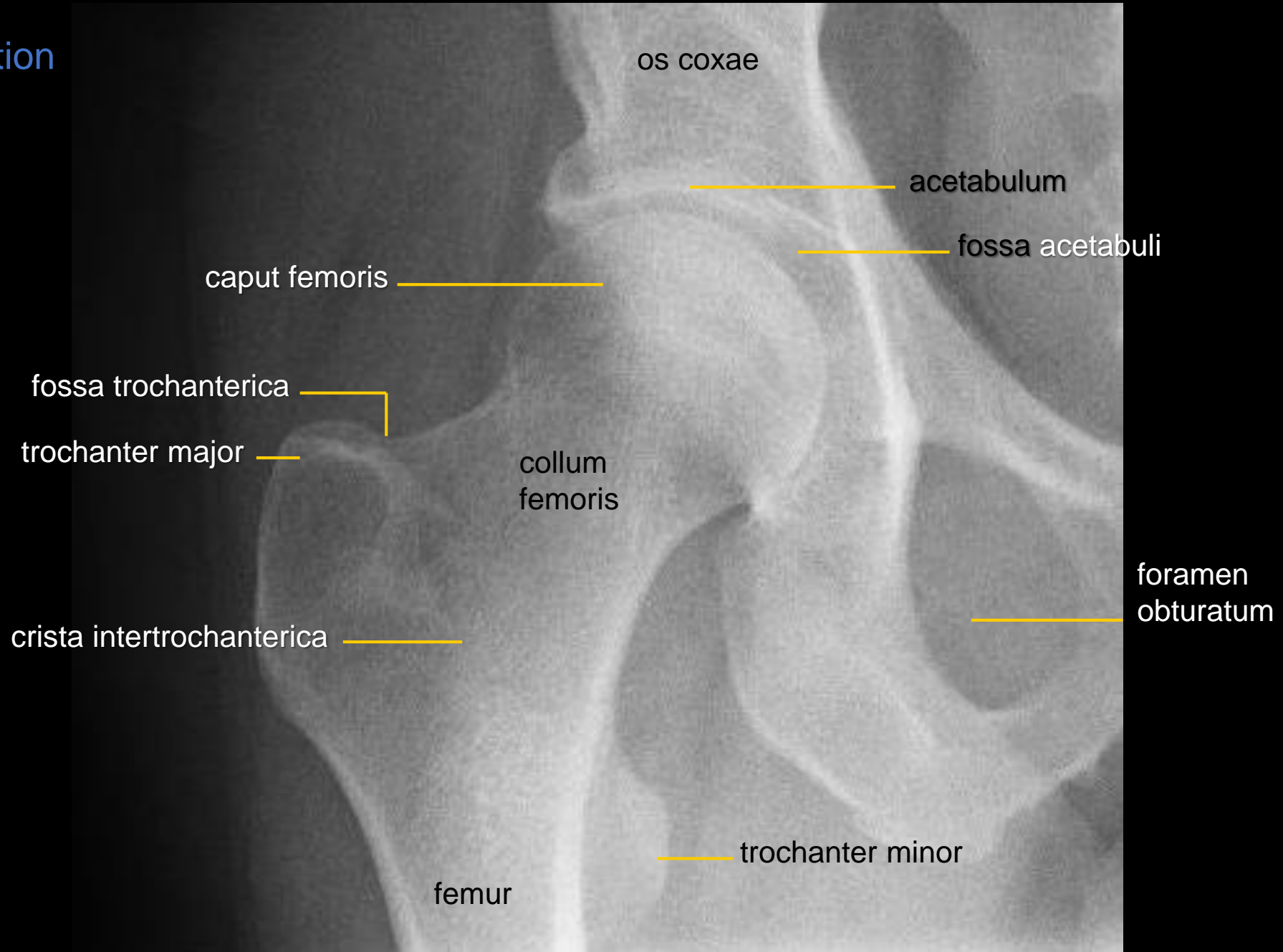
Pelvis

sagittal view



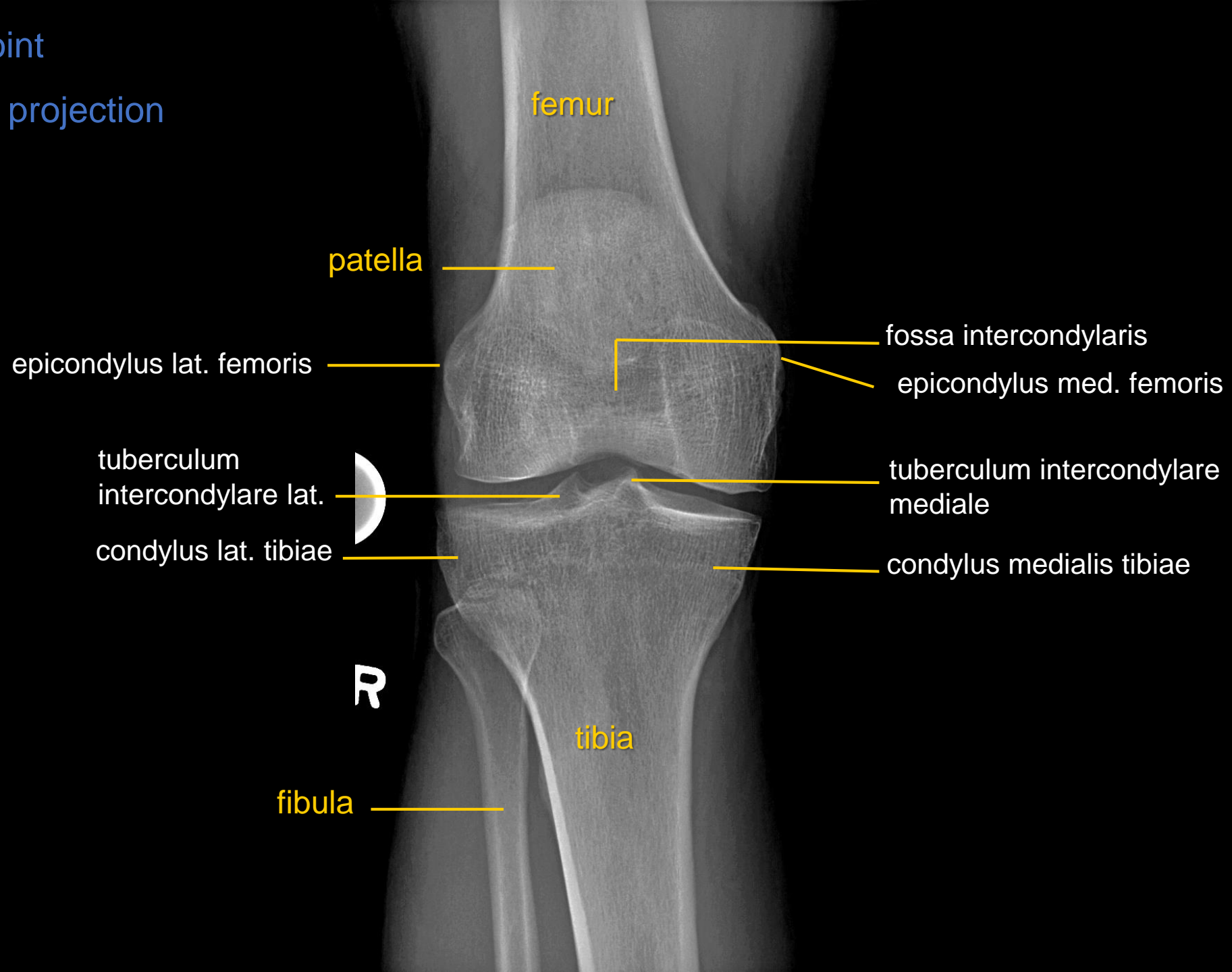
Hip joint

sagittal projection



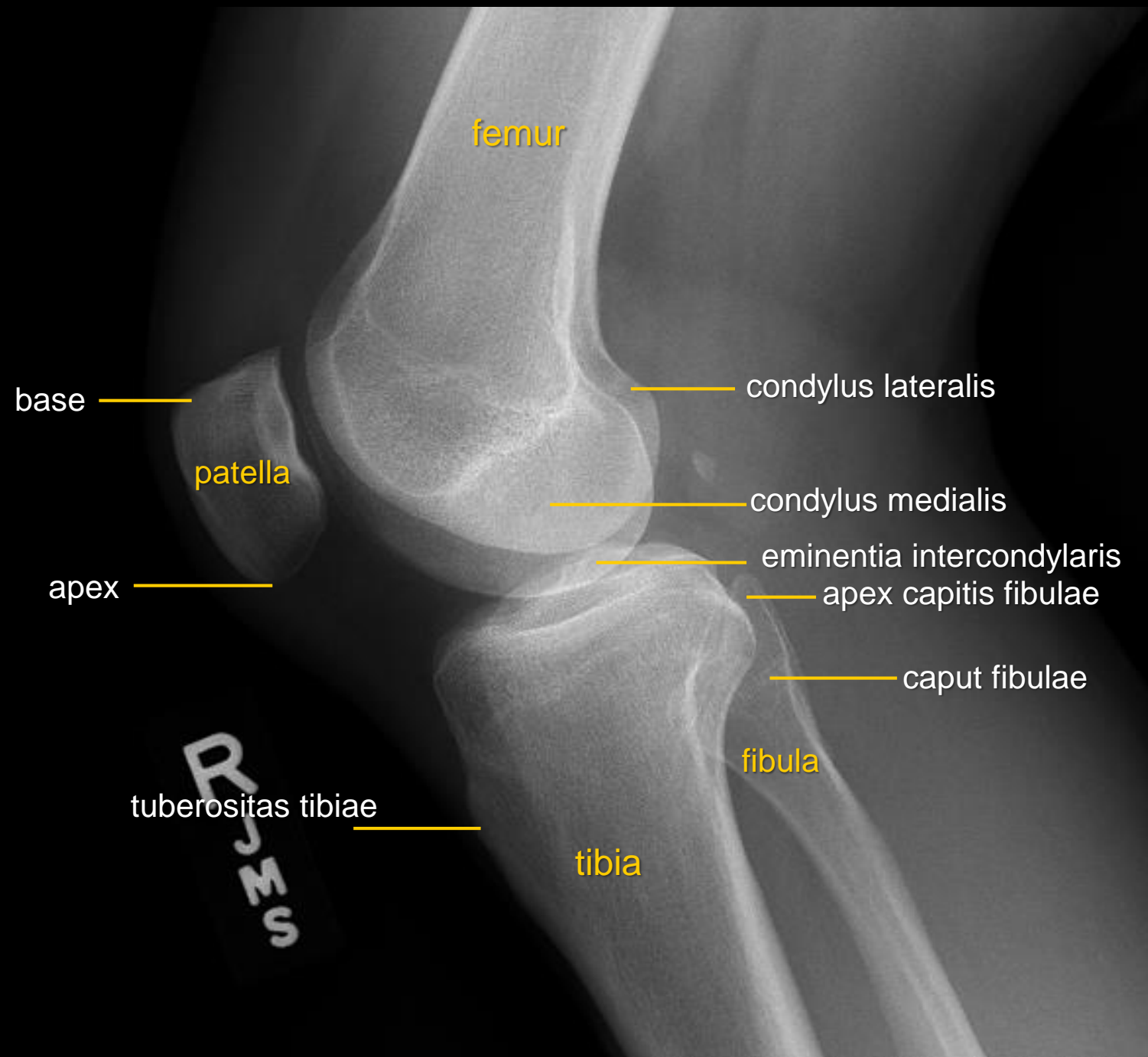
Knee joint

sagittal projection

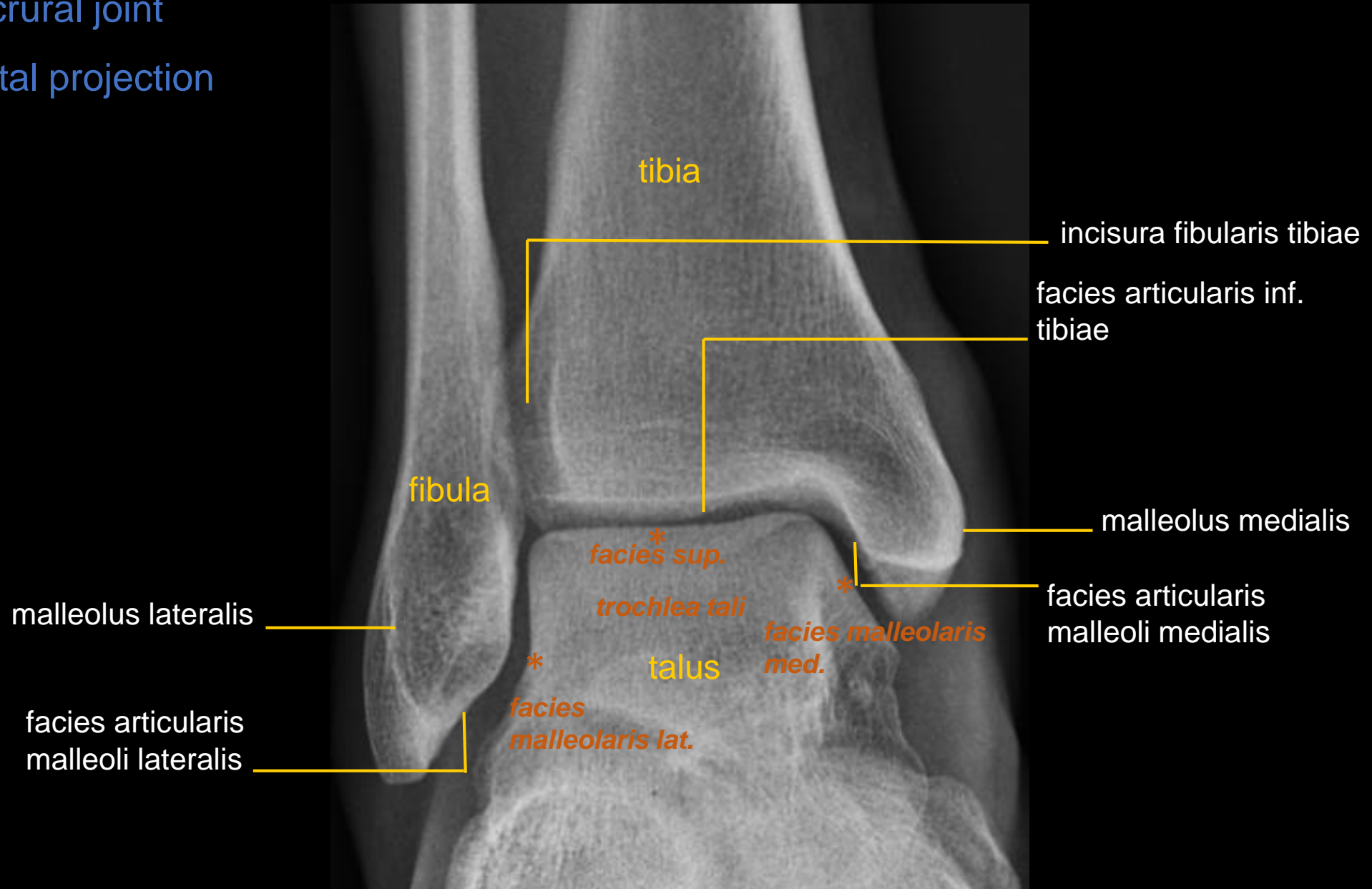


Knee joint

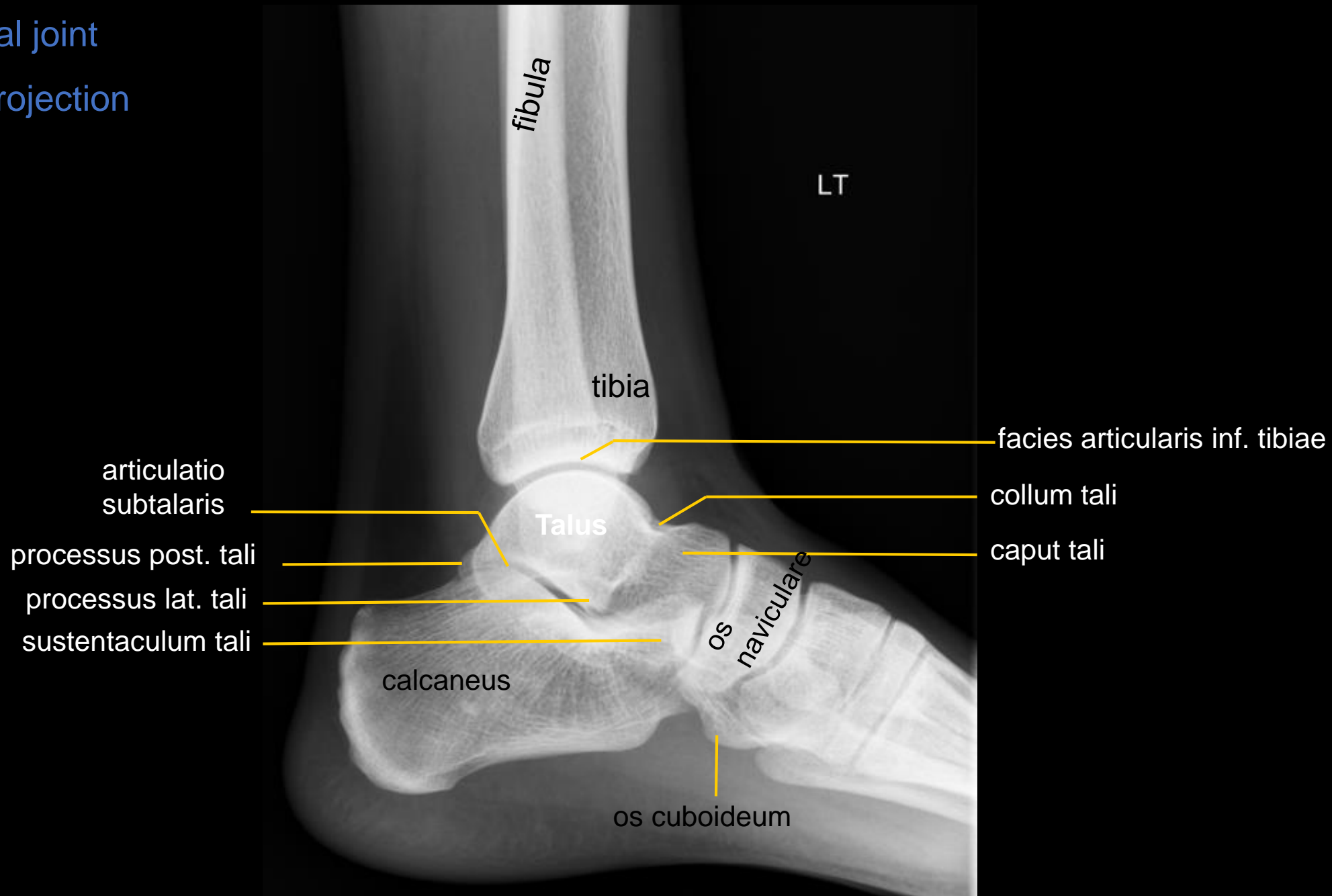
lateral projection



Talocrural joint
sagittal projection



Talocrural joint
lateral projection



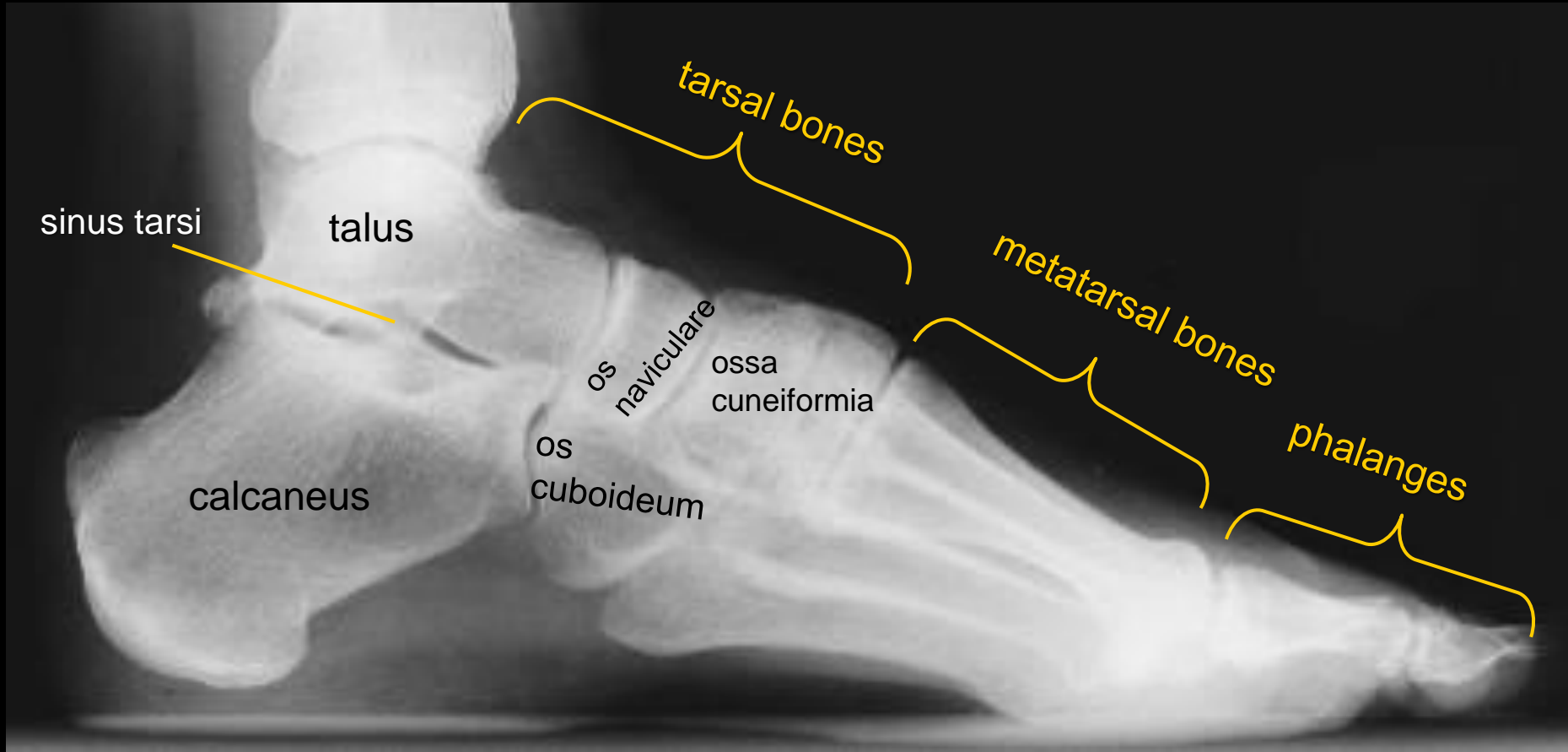
Foot

Dorsoplantar projection



Foot

lateral projection



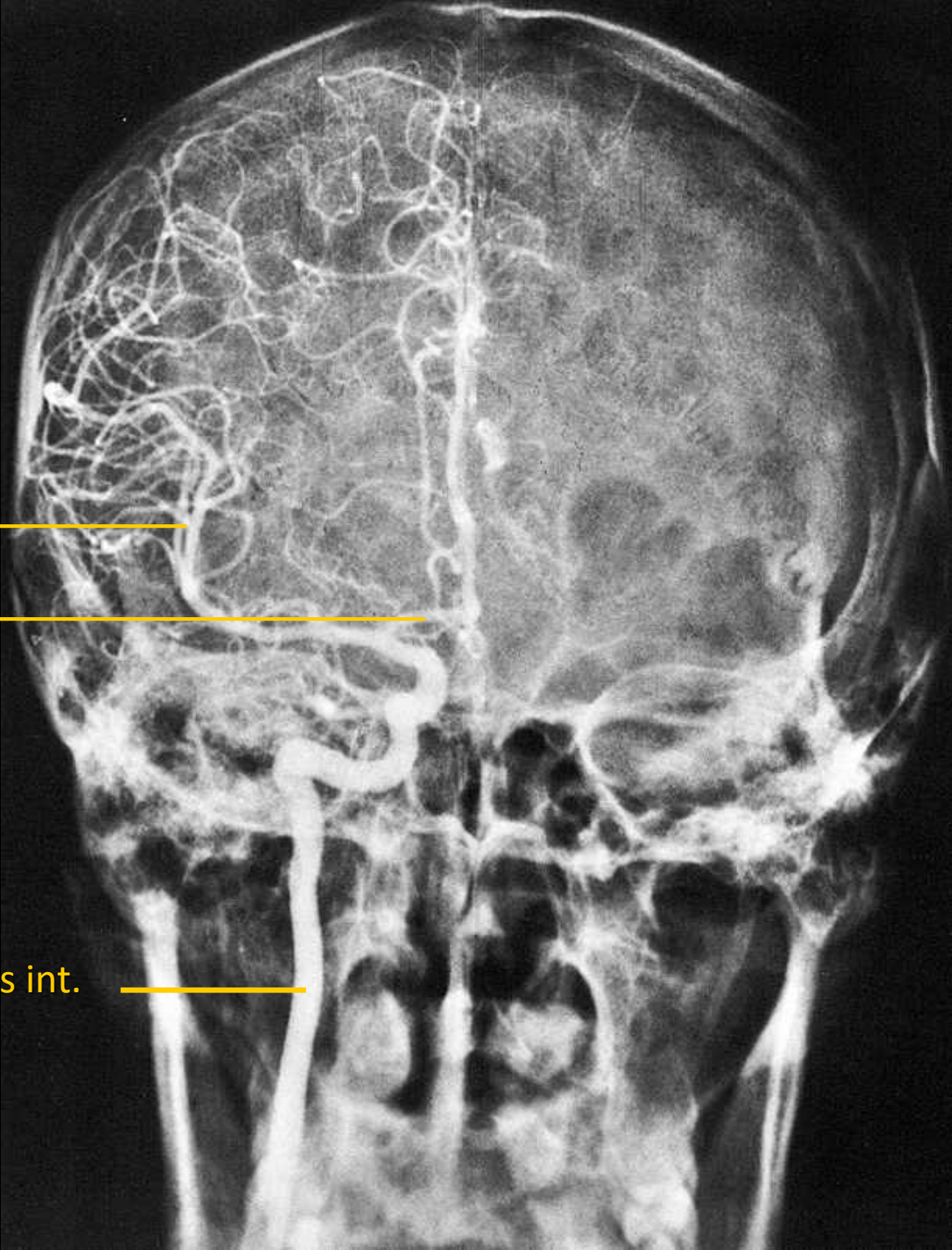
Arteriography of the internal carotid artery

sagittal projection

a. cerebri media

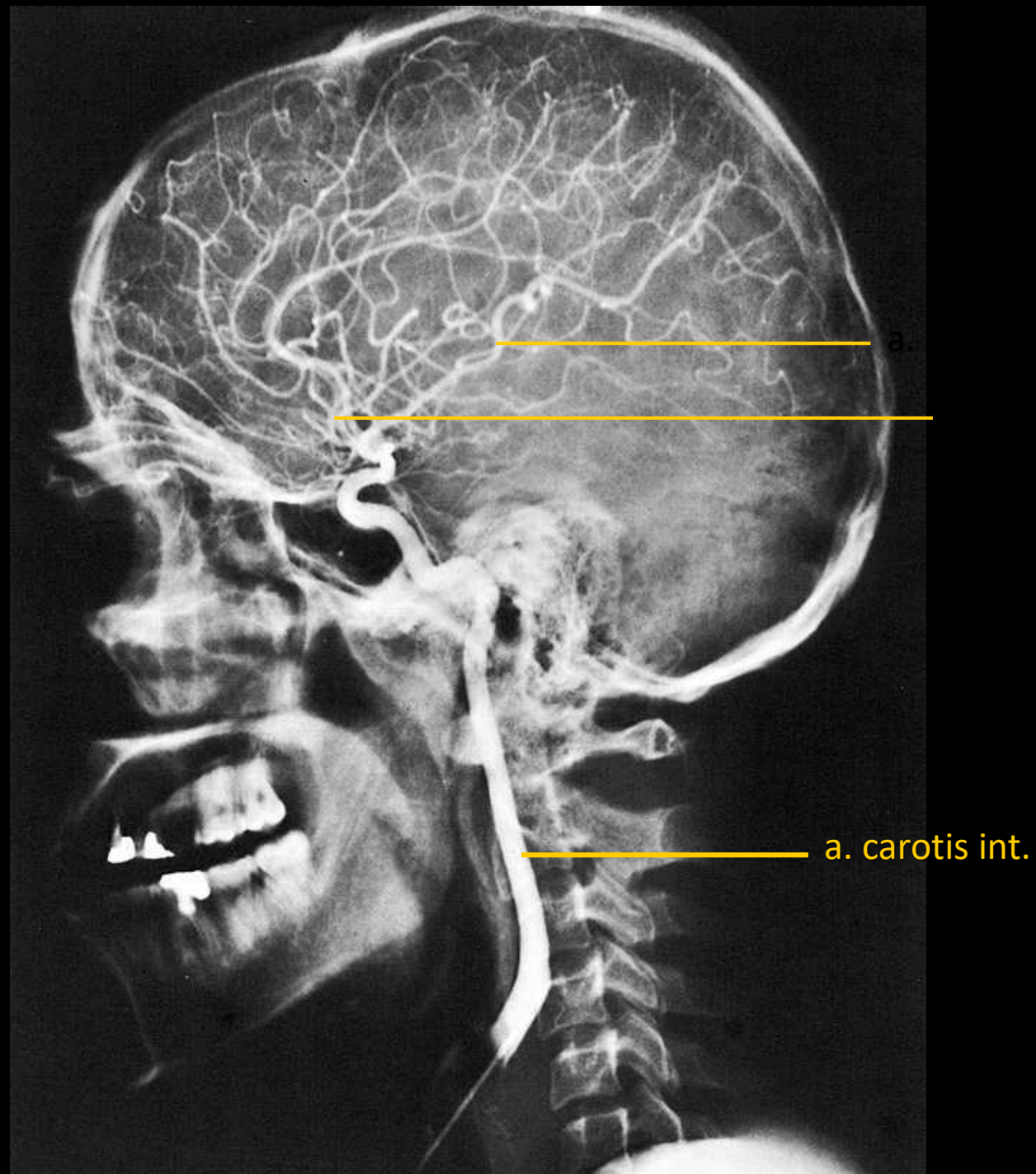
a. cerebri ant.

a. carotis int.



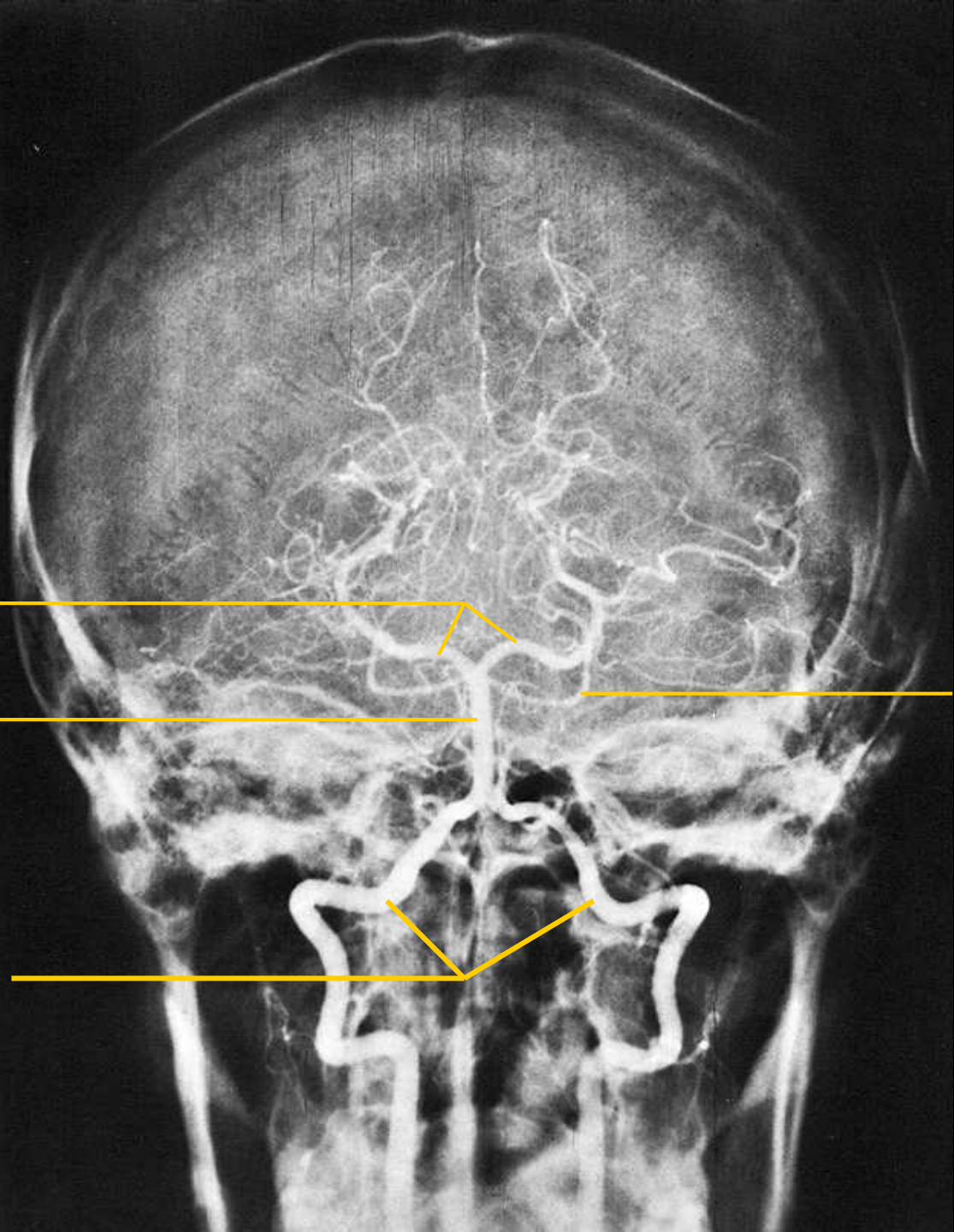
Arteriography of the internal
carotid artery

lateral projection

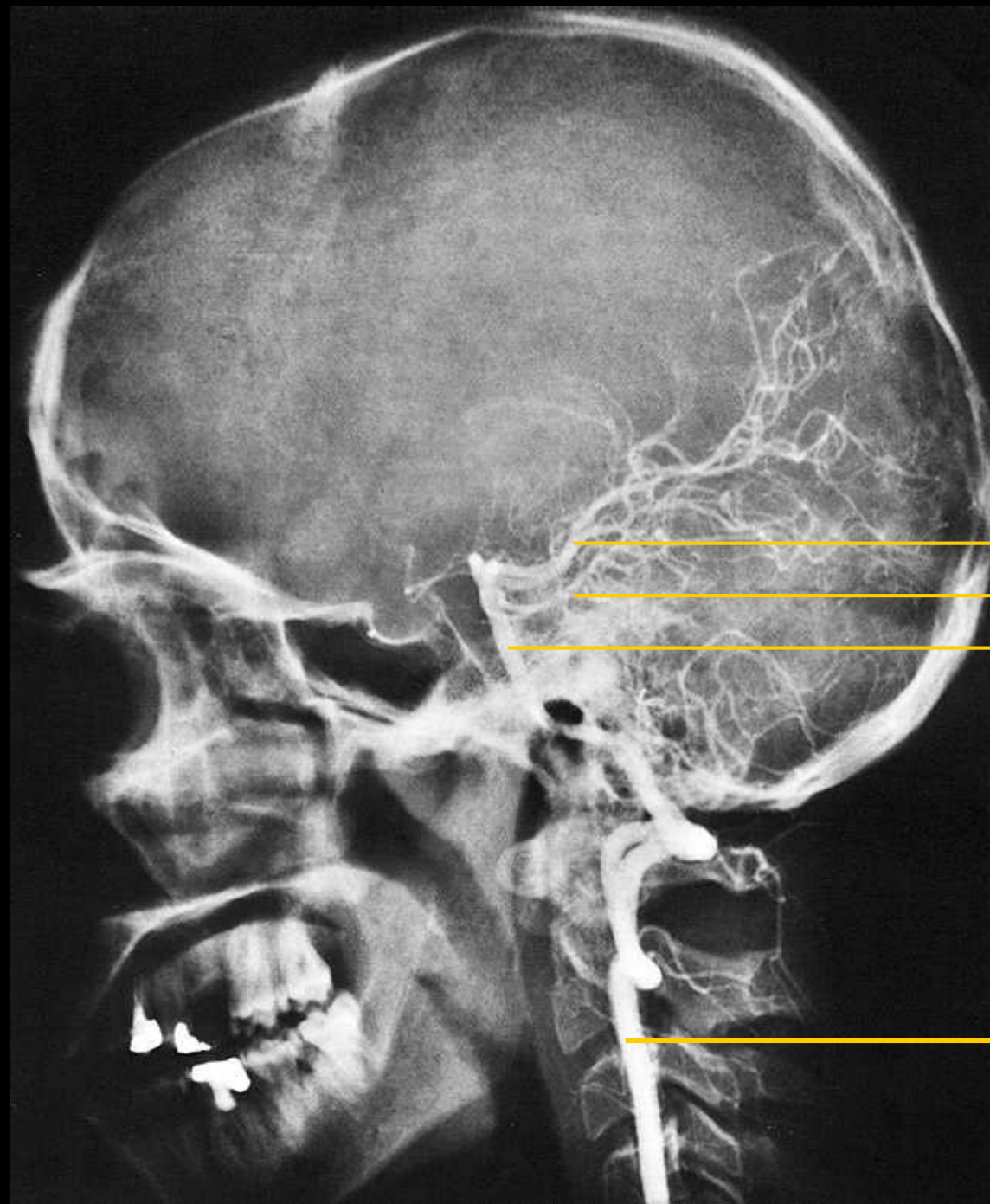


Arteriography of the vertebral artery sagittal projection

aa. vertebrales



Arteriography of the
vertebral artery
lateral projection



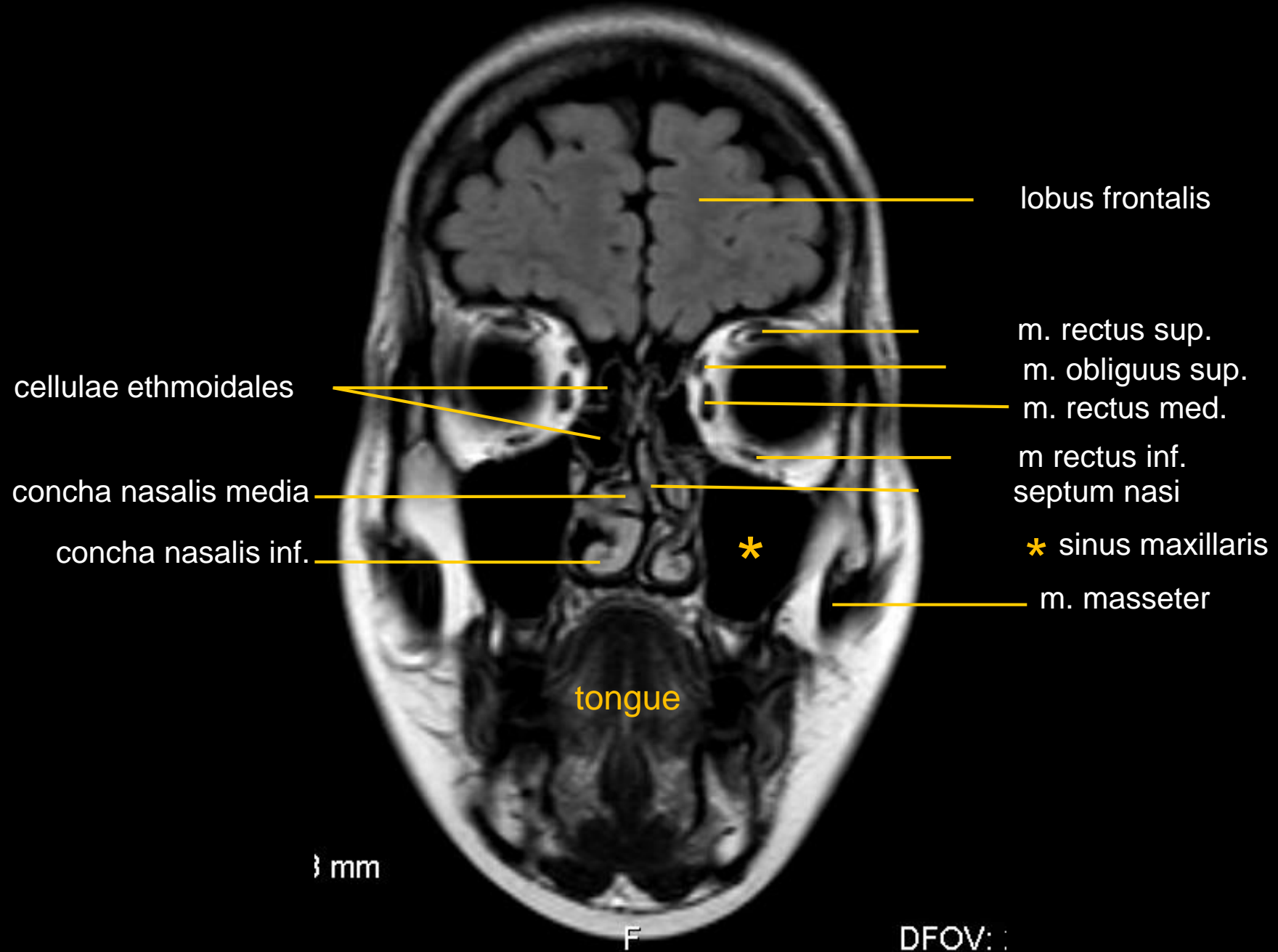
a. cerebri post.

a. cerebelli sup.

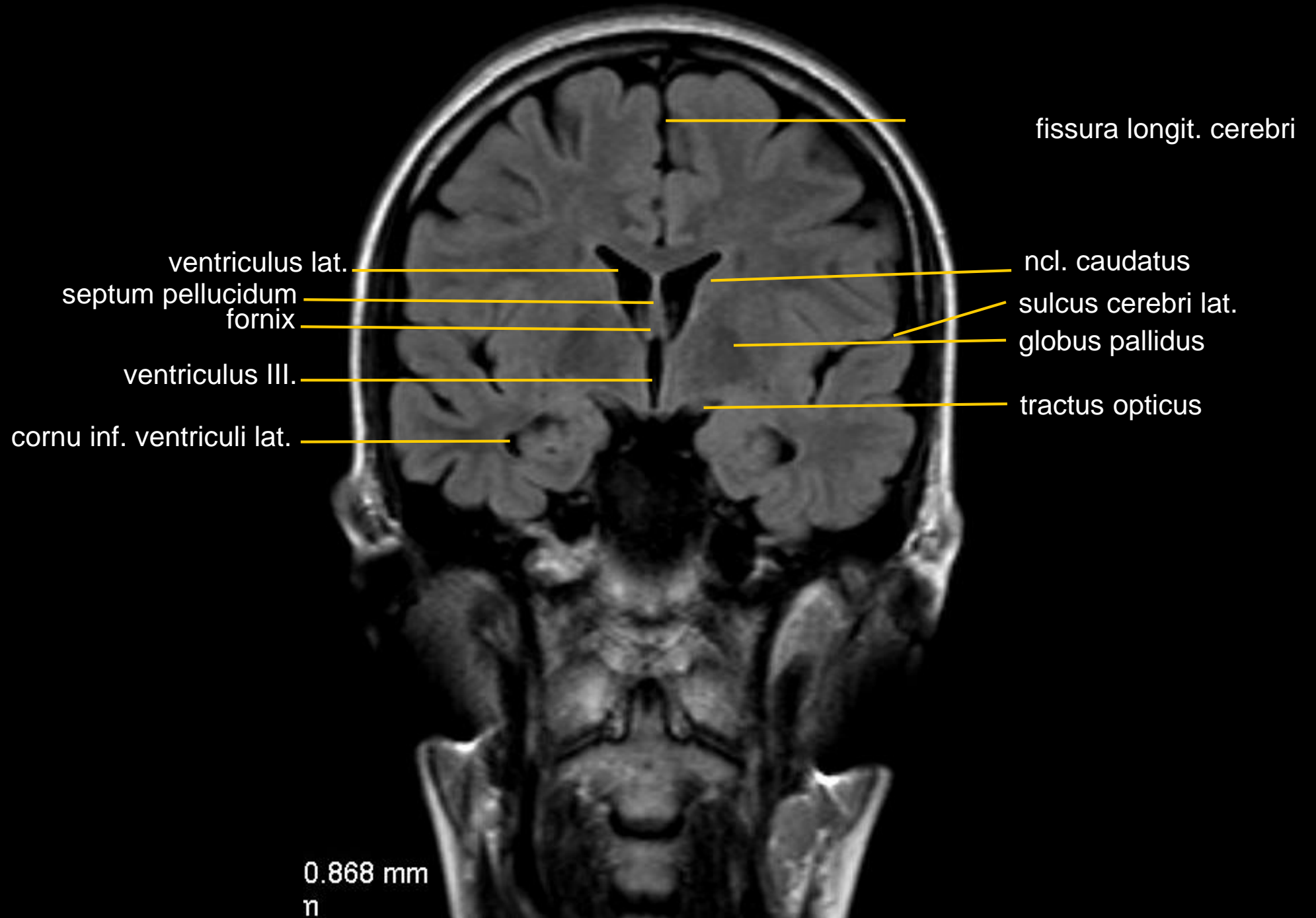
a. basilaris

a. vertebralis

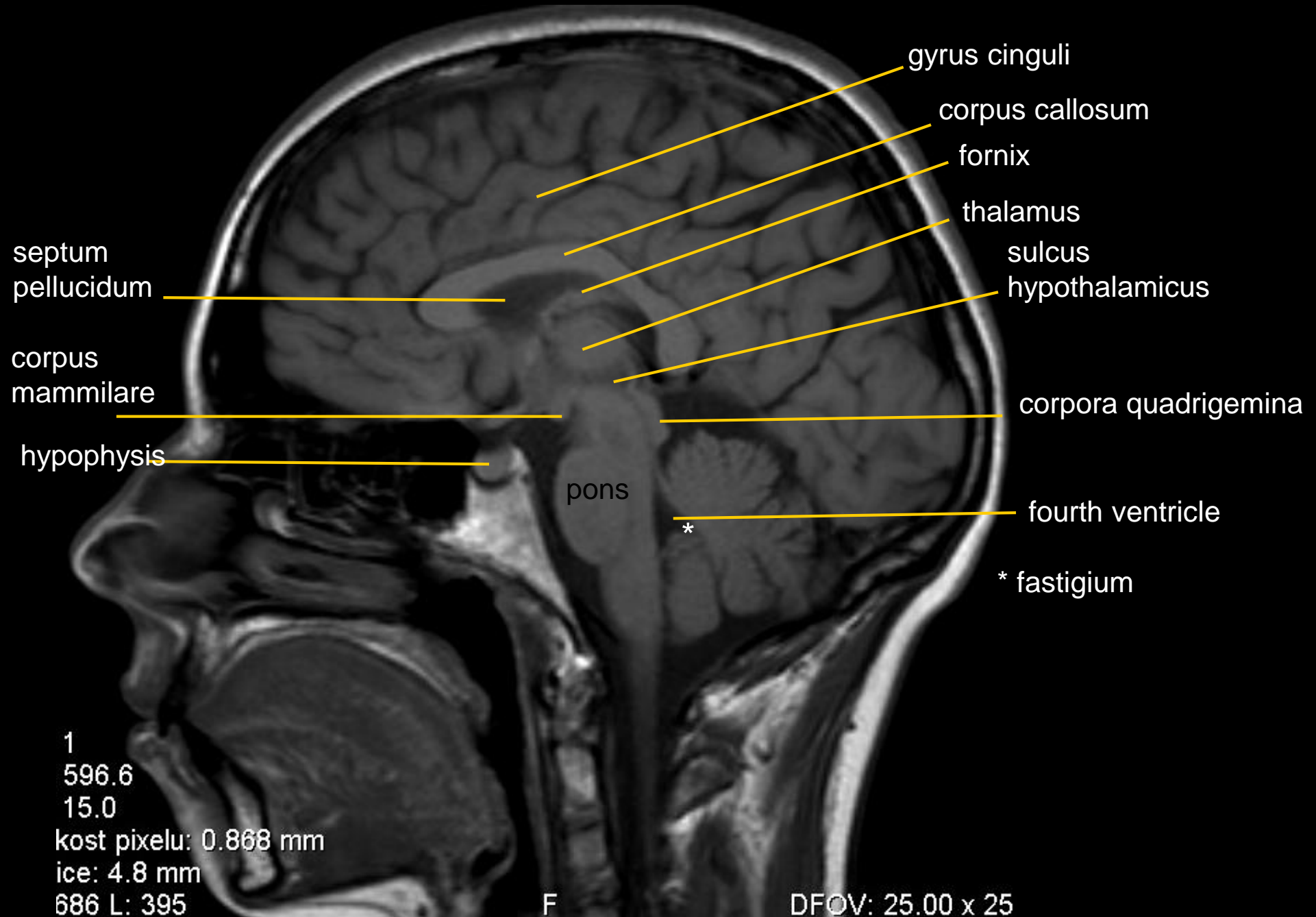
Head MRI



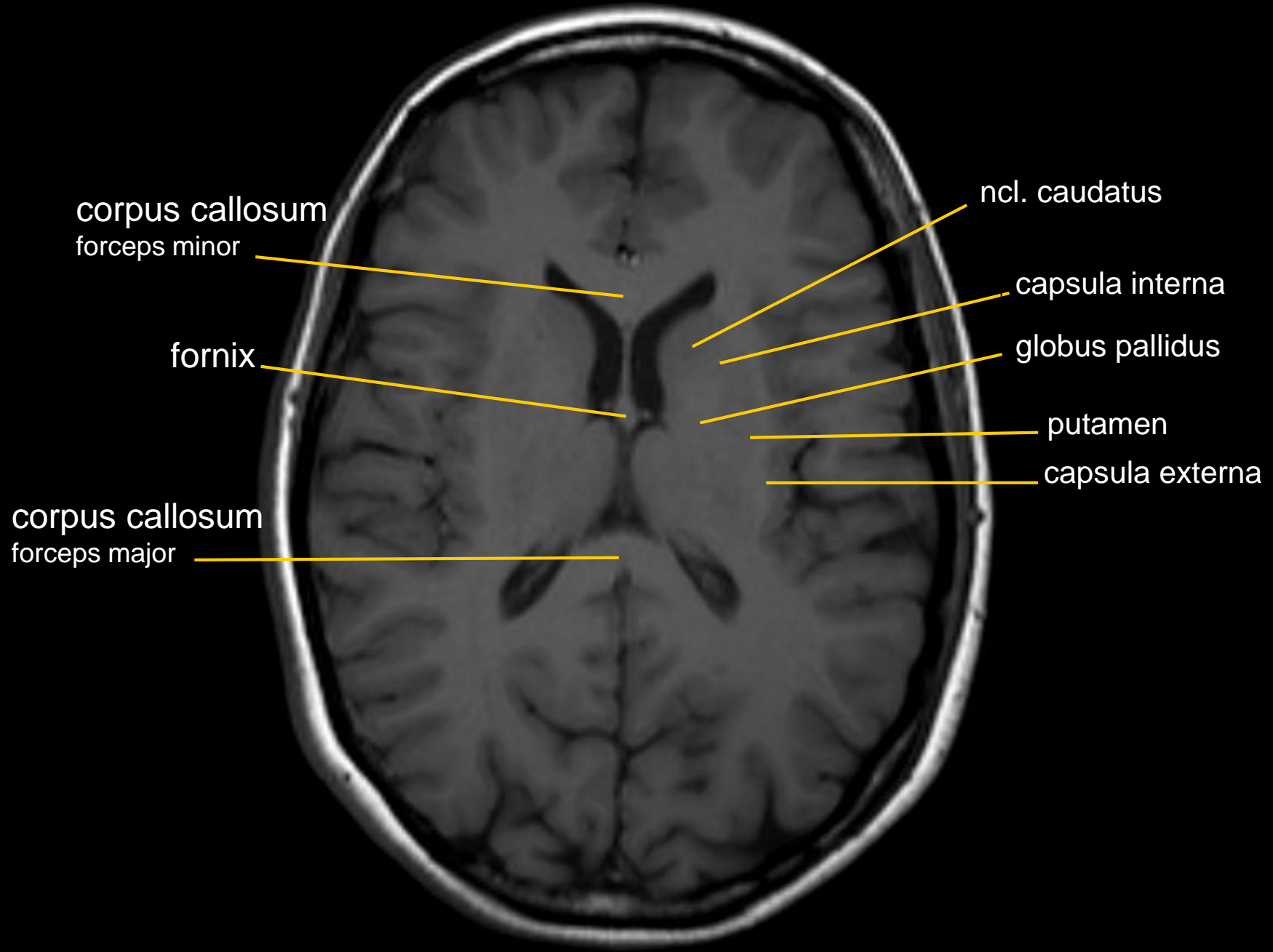
Head MRI



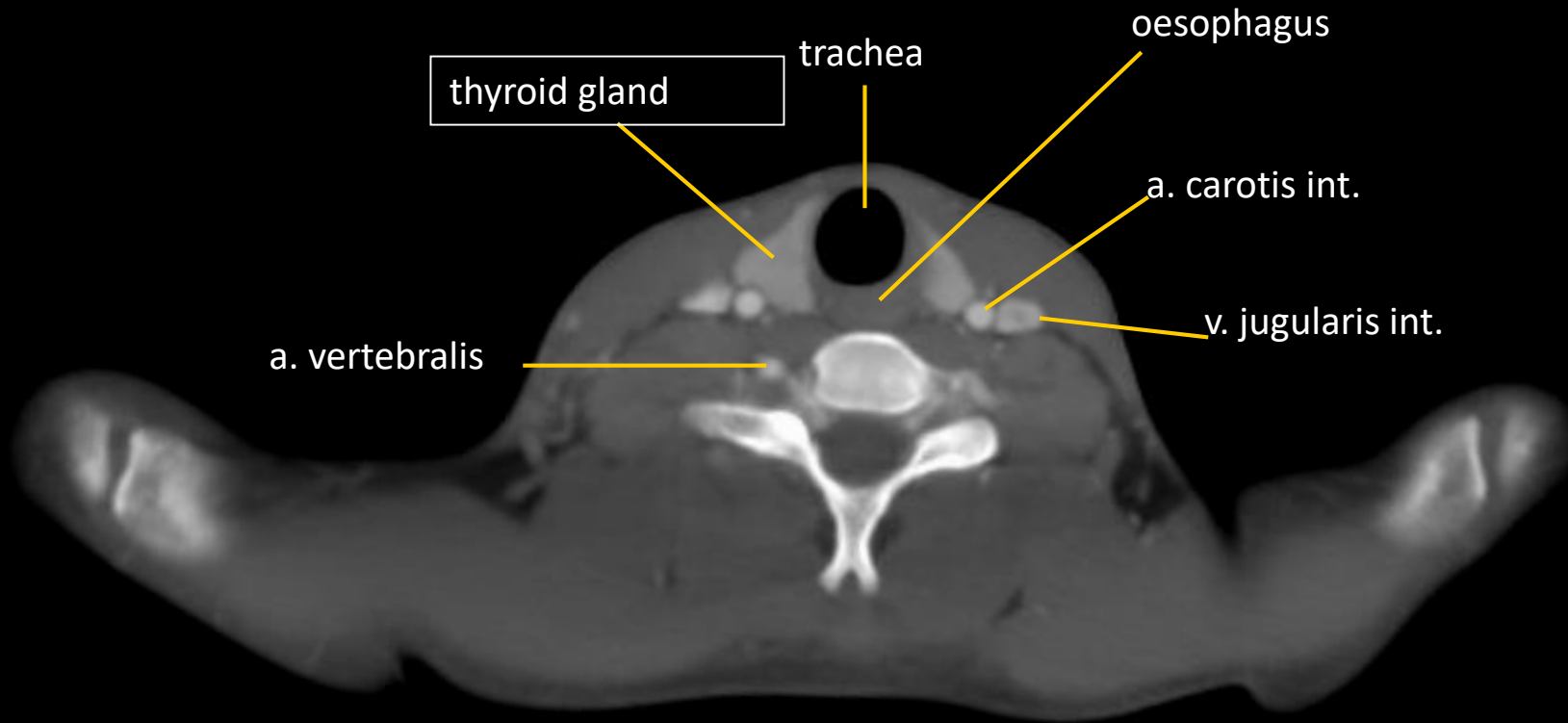
Head MRI

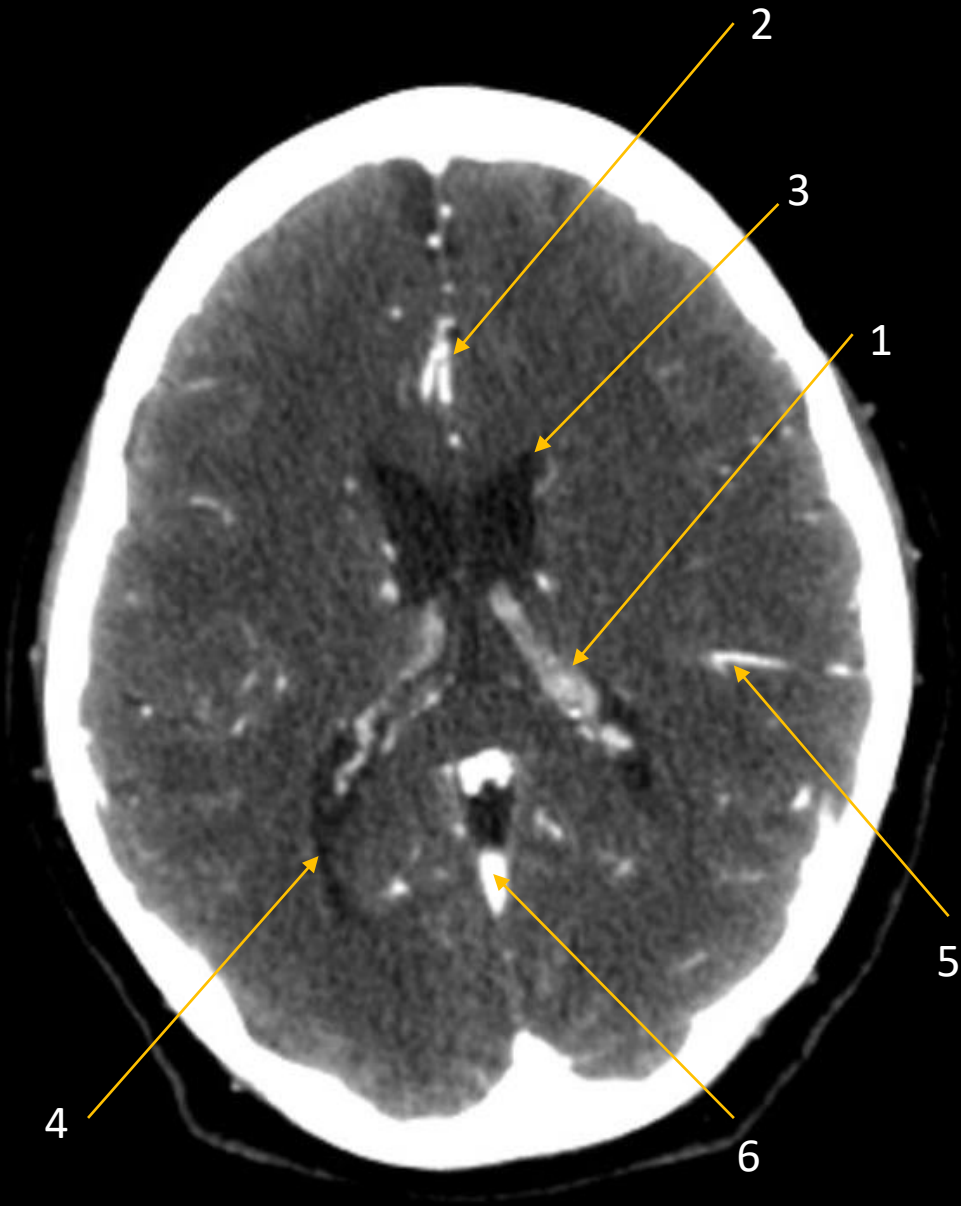


Head MRI



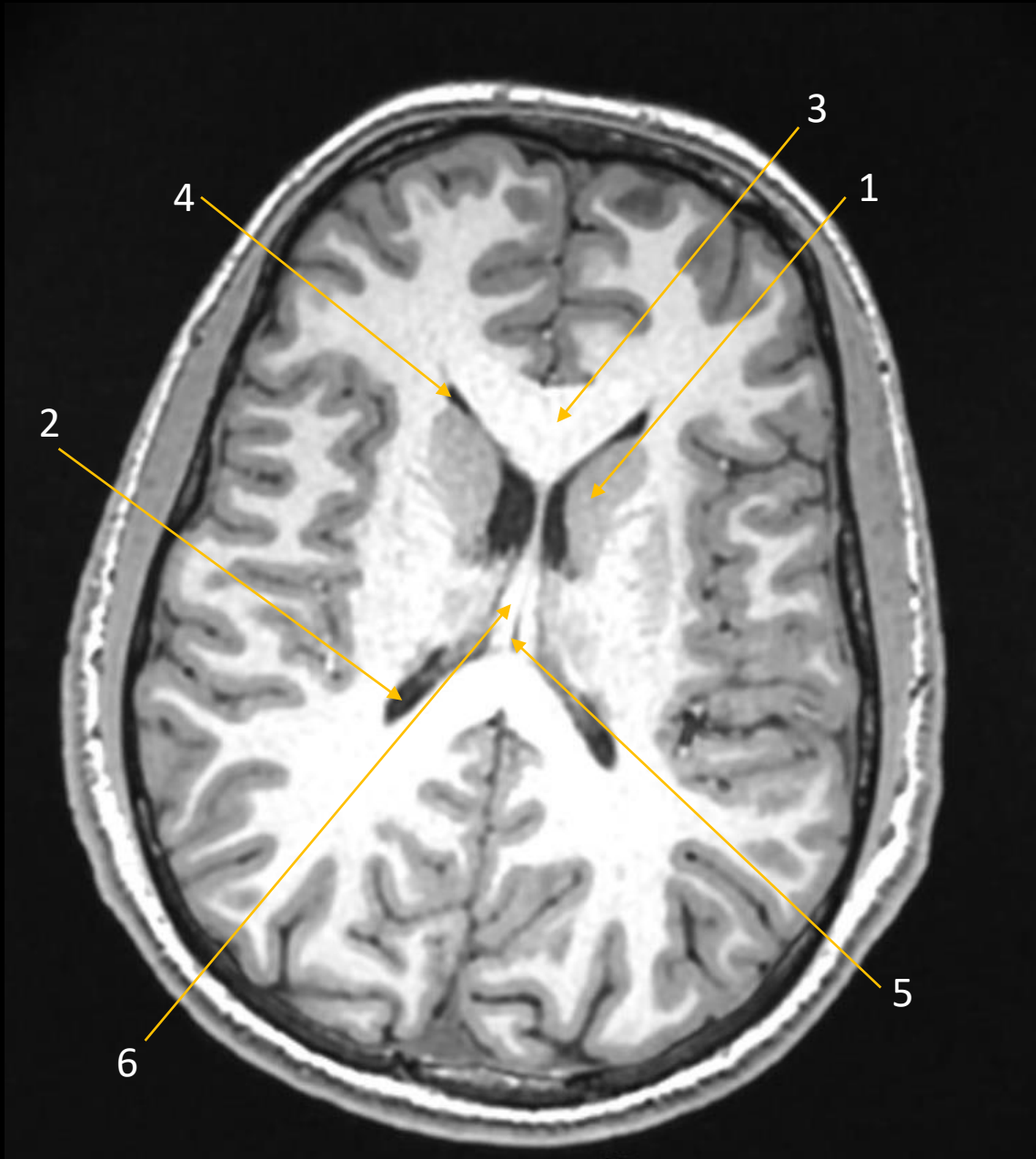
CT of the neck – section through the body of C7





CT angio

- 1. Plexus choroideus ventriculi lateralis
- 2. A. cerebri anterior
- 3. Cornu anterius ventriculi lateralis
- 4. Cornu posterius ventriculi lateralis
- 5. A. cerebri media sin.
- 6. Sinus rectus



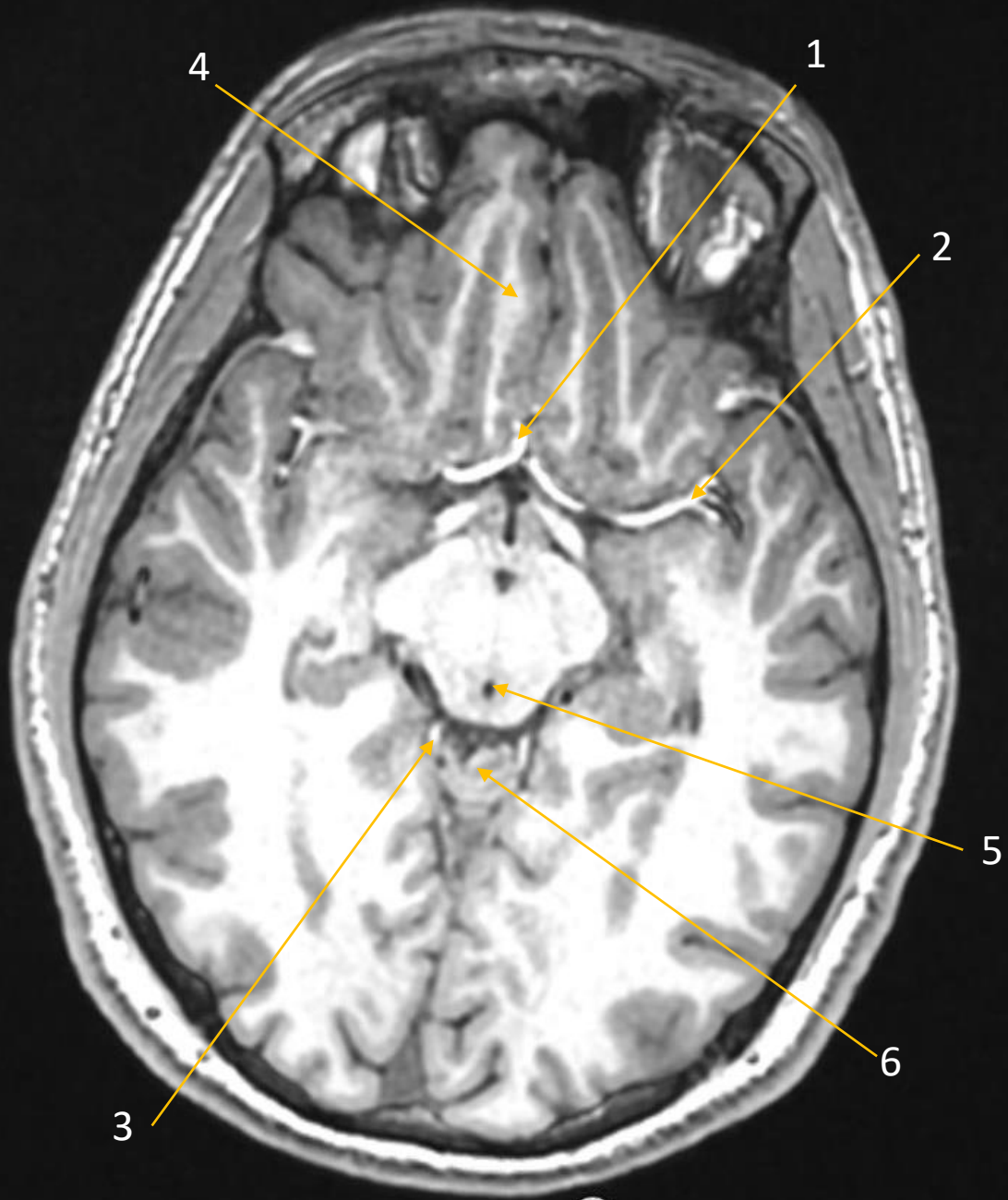
MRI

1. Nucleus caudatus
2. Cornu posterius ventriculi lateralis
3. Corpus callosum
4. Cornu anterius ventriculi lateralis
5. Commisura fornicis
6. Fornix



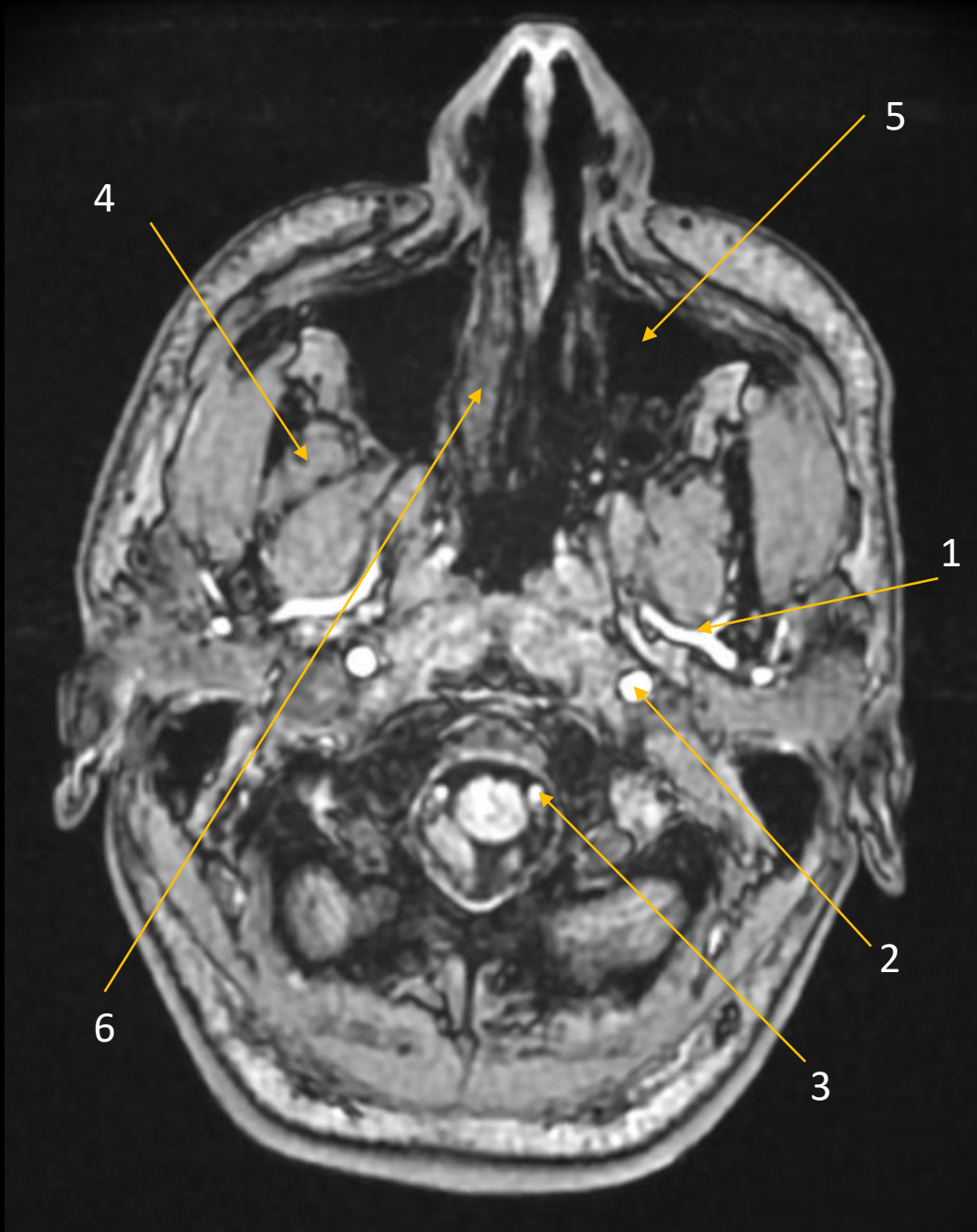
MRI

- 1. Putamen
- 2. Capsula externa
- 3. Globus pallidus
- 4. Claustrum
- 5. Insula
- 6. Capsula interna



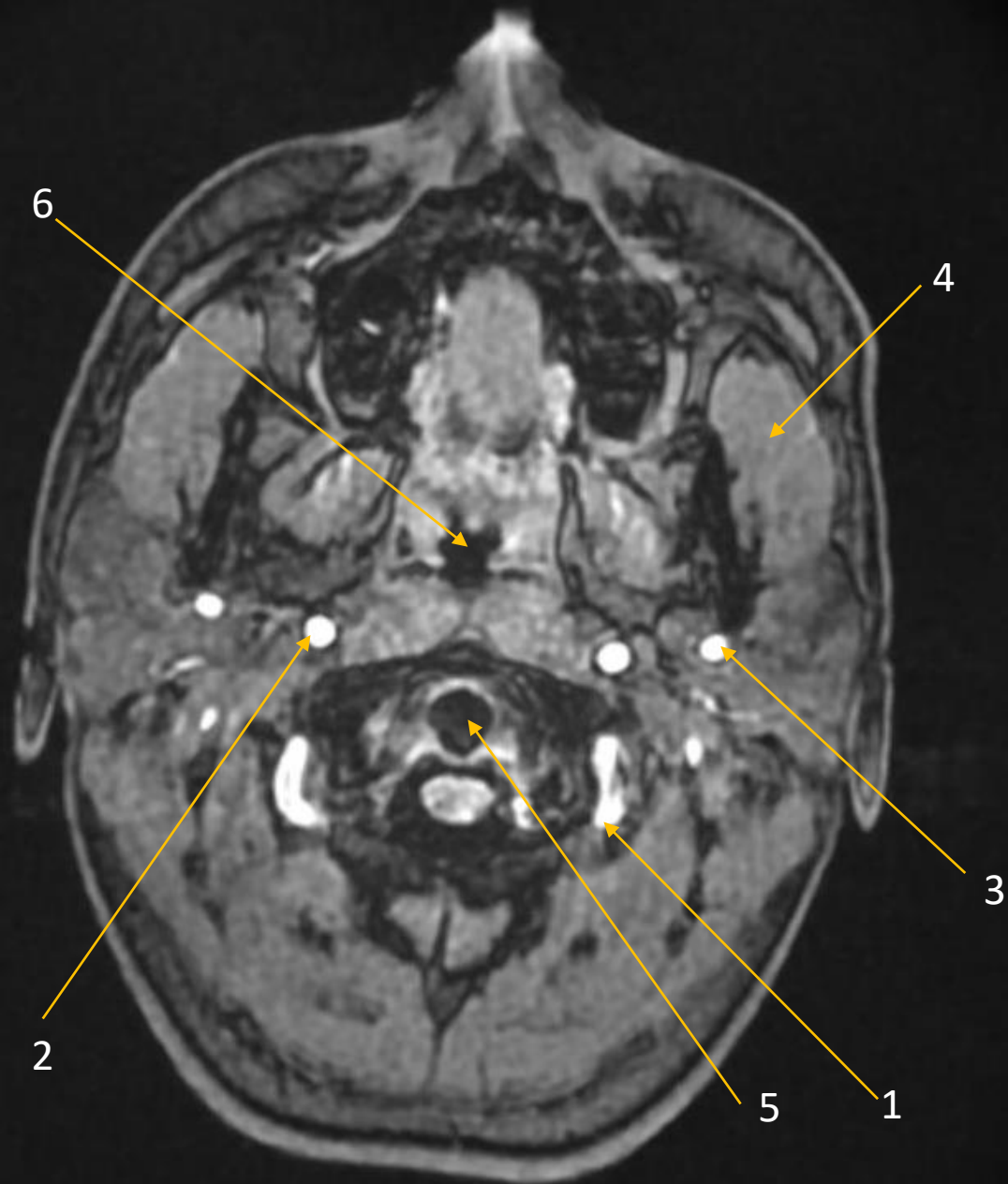
MRI

1. A. cerebri anterior
2. A. cerebri media sin.
3. A. cerebri posterior dx.
4. Gyrus rectus
5. Aqueductus mesencephali
6. Vermis cerebelli



MRI

1. A. maxillaris sin.
2. A. carotis interna sin.
3. A. vertebralis
4. Musculus pterygoideus lateralis
5. Sinus maxillaris
6. Concha nasalis inferior



MRI

1. A. vertebralis sin.
2. A. carotis interna dx.
3. A. carotis externa sin.
4. Musculus masseter
5. Dens axis
6. Pharynx