

GENERAL EMBRYOLOGY 1

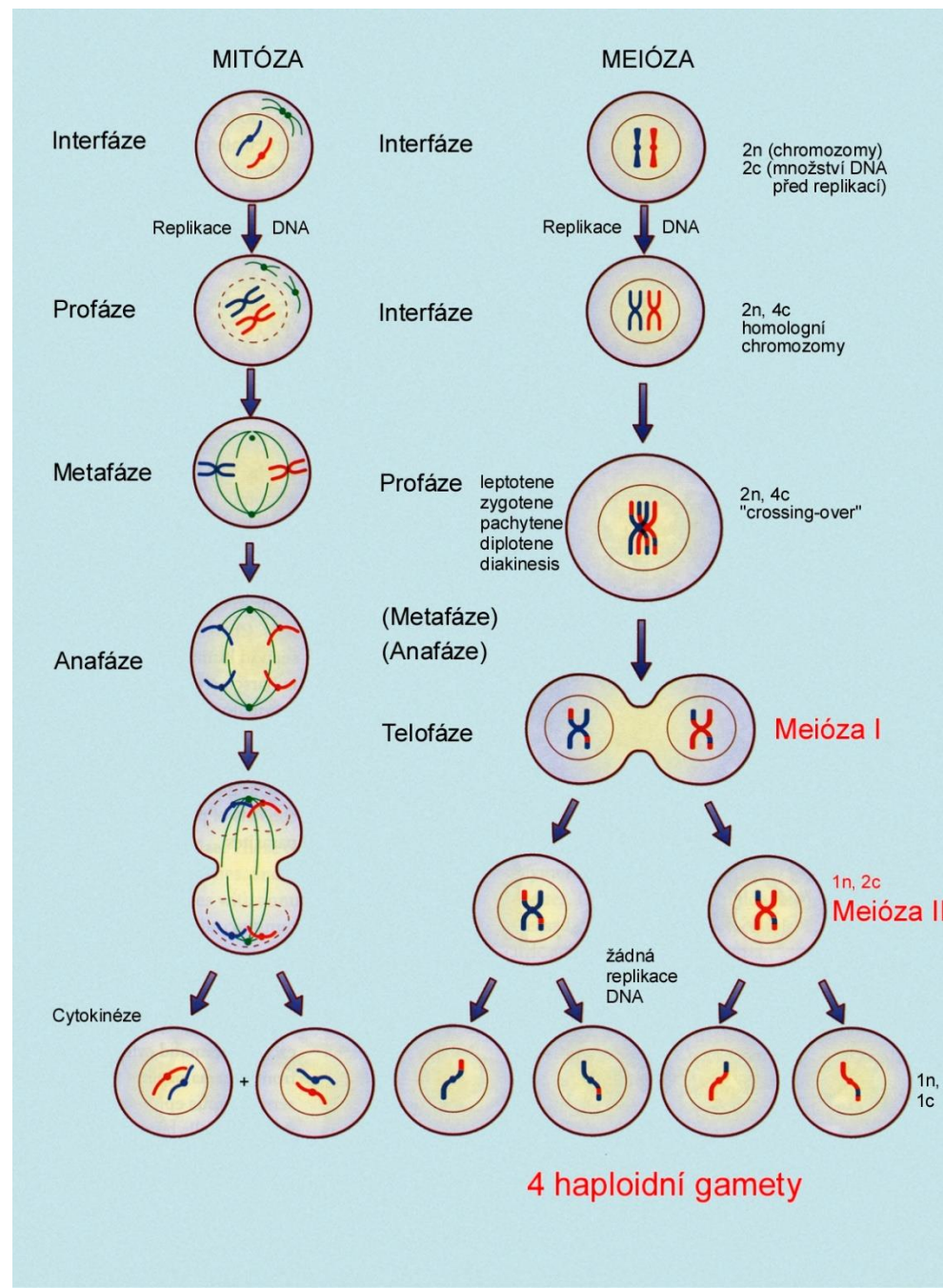
Meiosis. Development of gametes. Fertilization. Cleavage.

Implantation. Changes in blastocyst during implantation.

Differentiation of embryoblast and trophoblast.

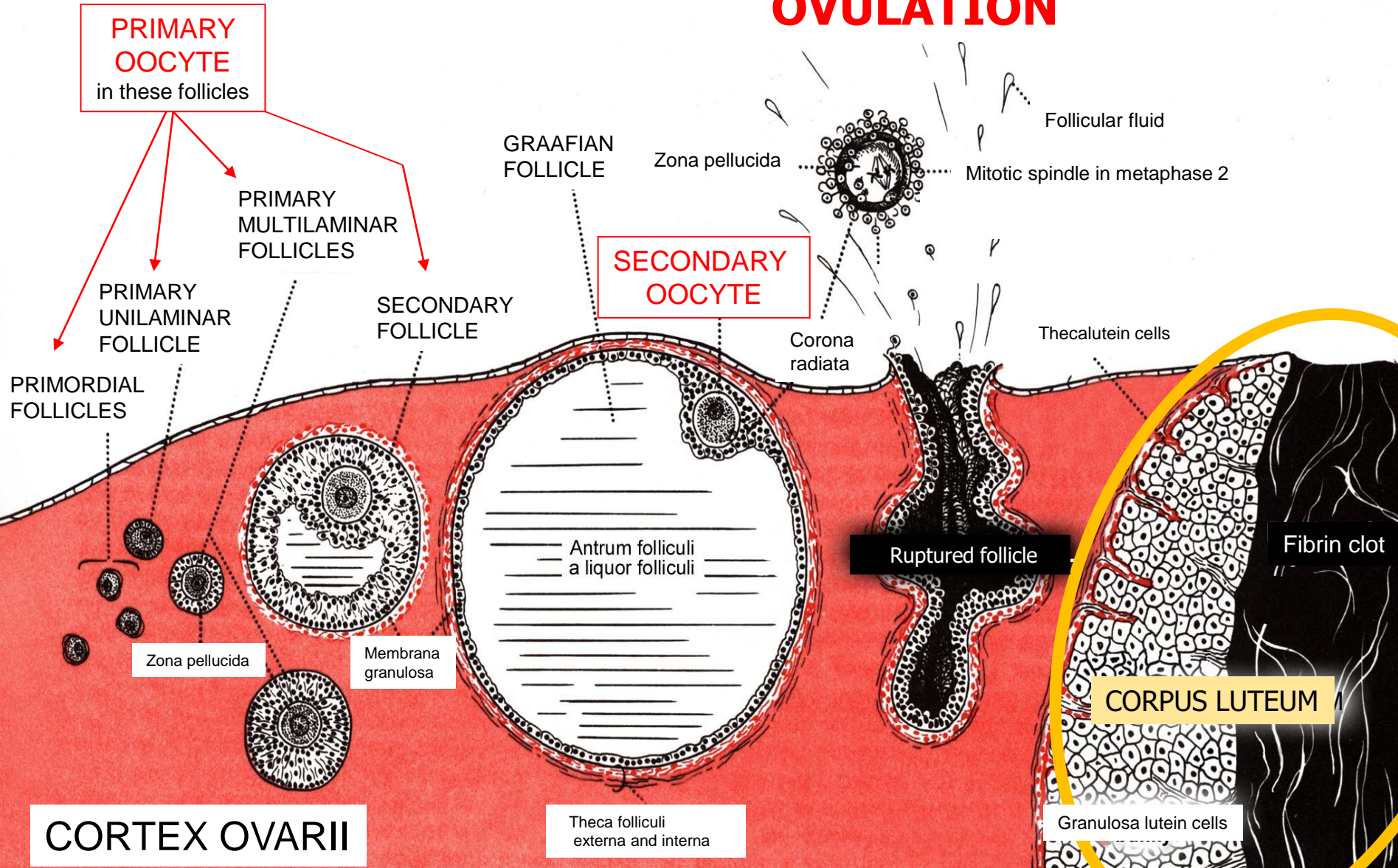
Germ disc. The axial organs of embryo. Development of embryonic mesoderm and notochord.

MITOSIS and MEIOSIS – the main differences

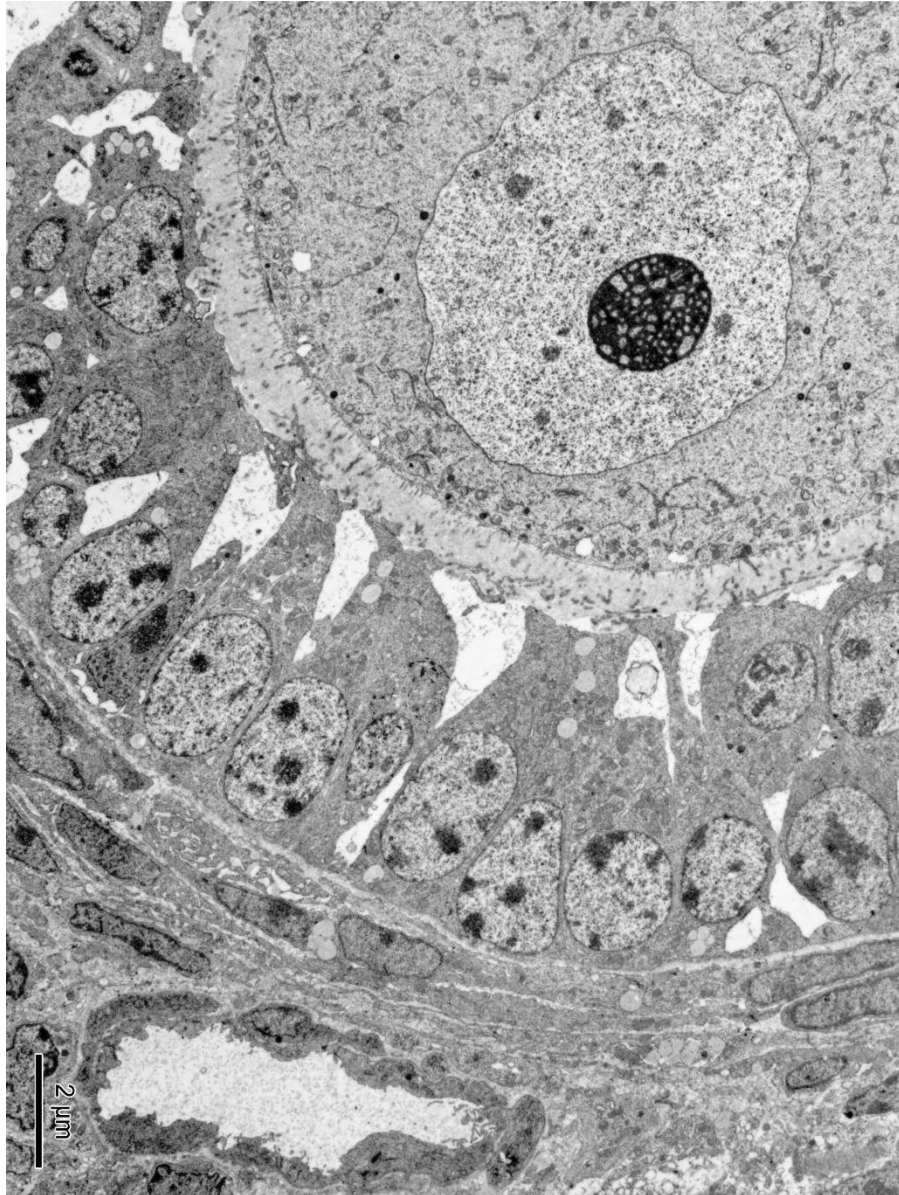


GROWTH AND MATURATION OF OVARIAN FOLLICLES

OVULATION



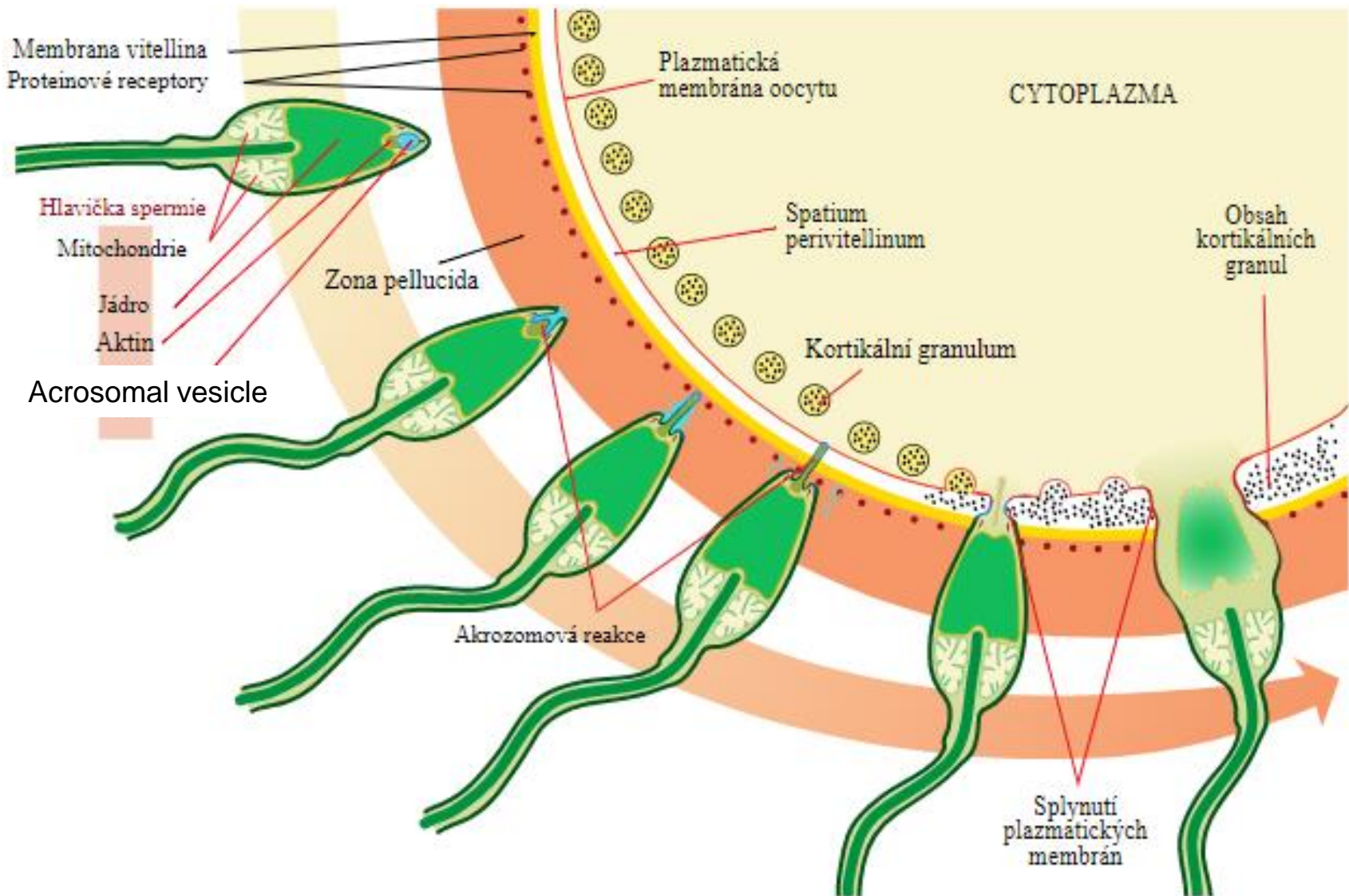
Oocyte



Sperm



Acrosomal and cortical reaction

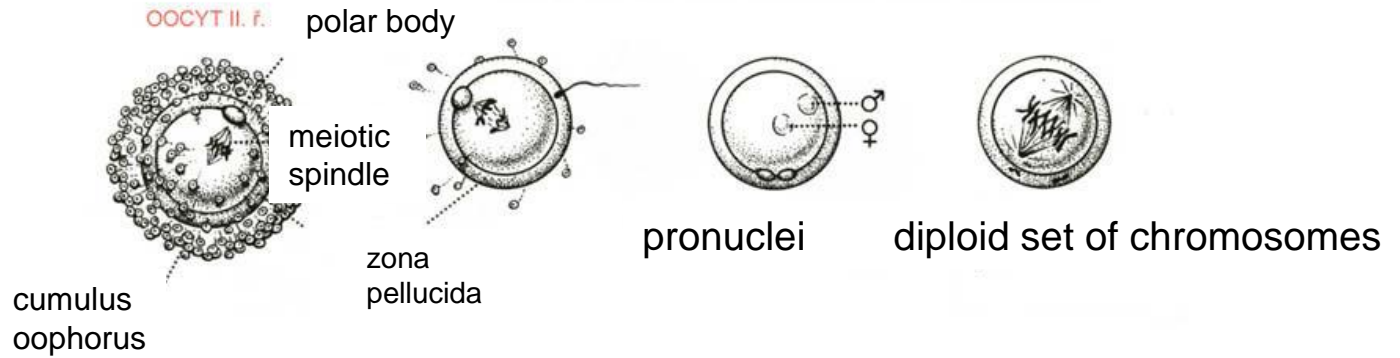


FERTILIZATION AND IMPLANTATION

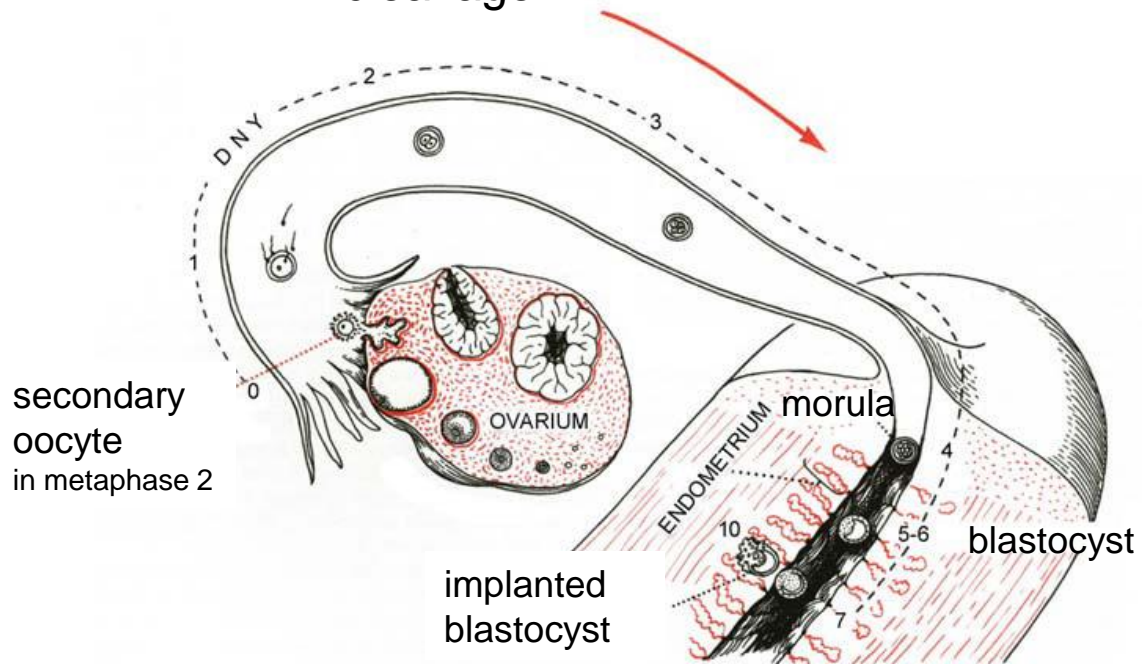
oocyte II

sperm penetration

zygote



cleavage



FERTILIZATION

zygote

– 18 h after fertilization



24 h



45 h



morula - 72 h

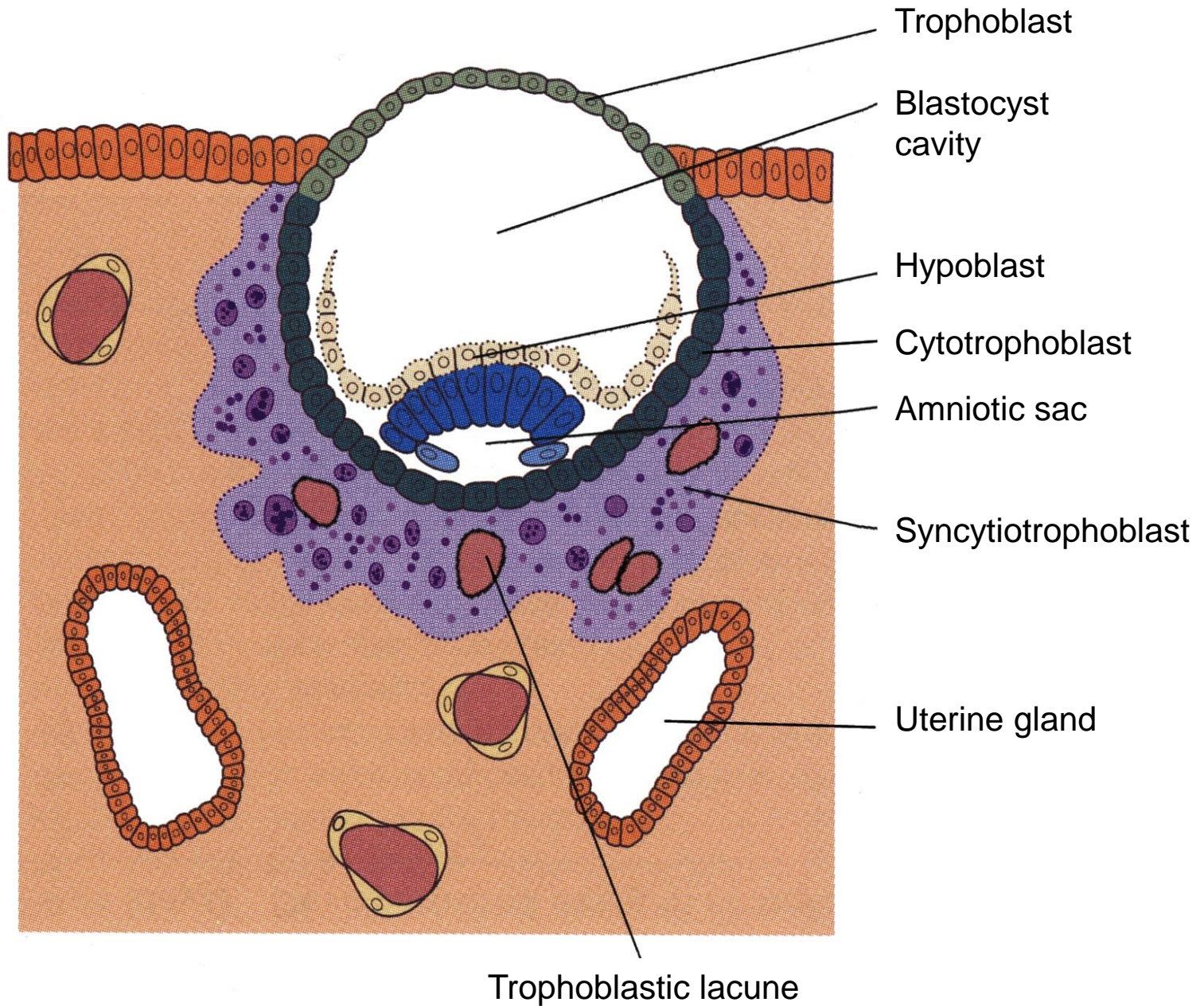


morula – 96 h

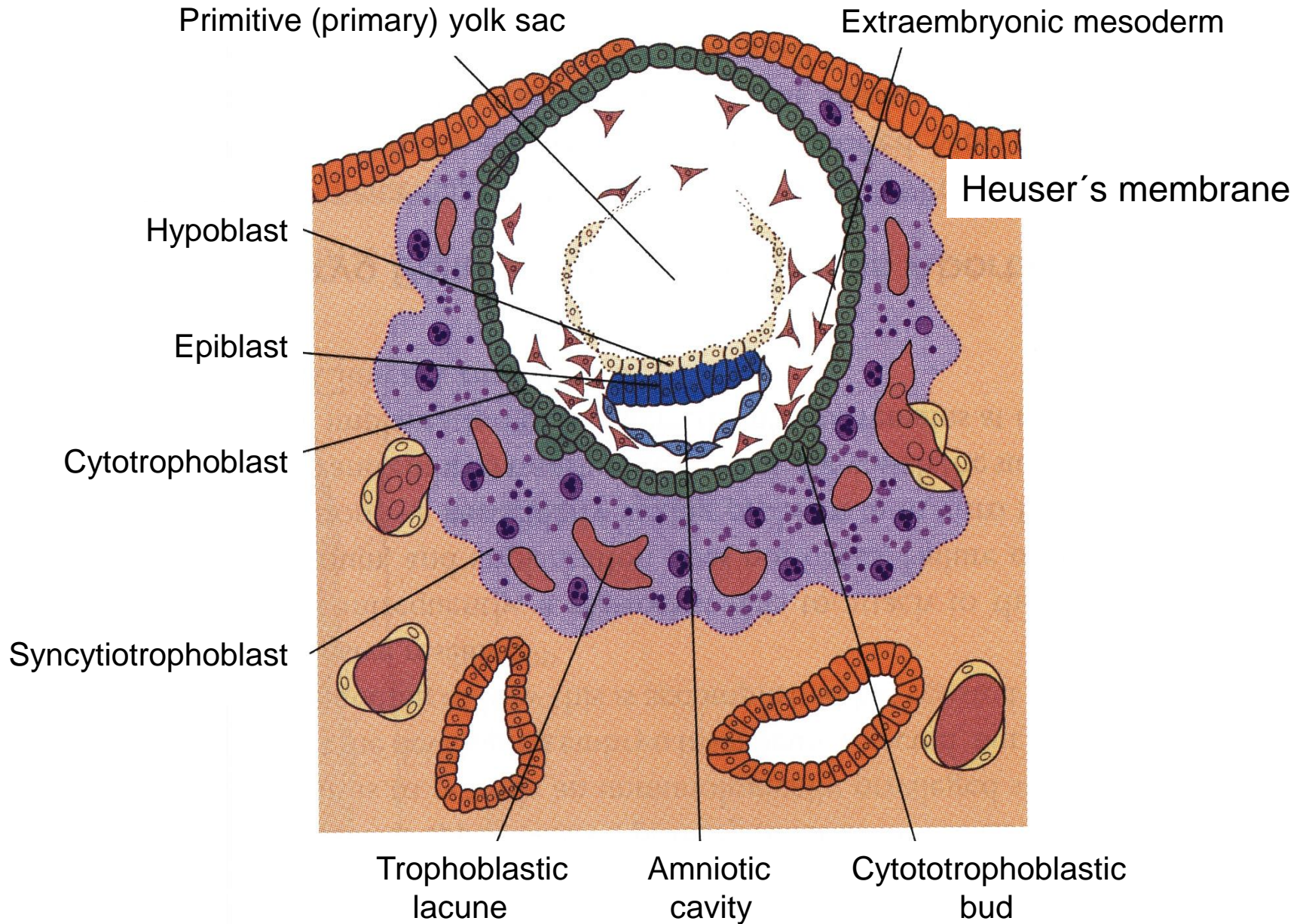


blastocyst

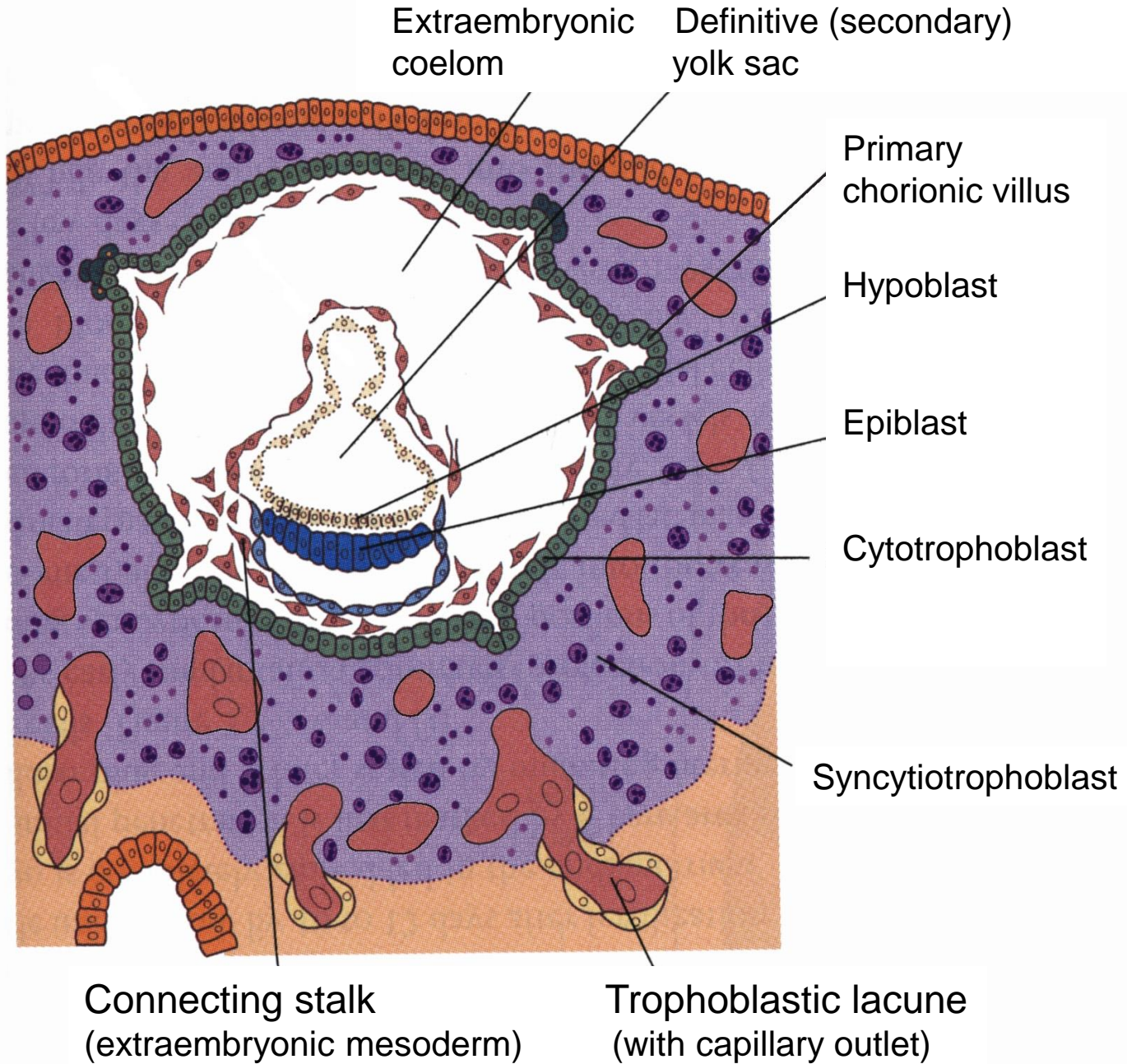
IMPLANTATION – DAY 8 1/2



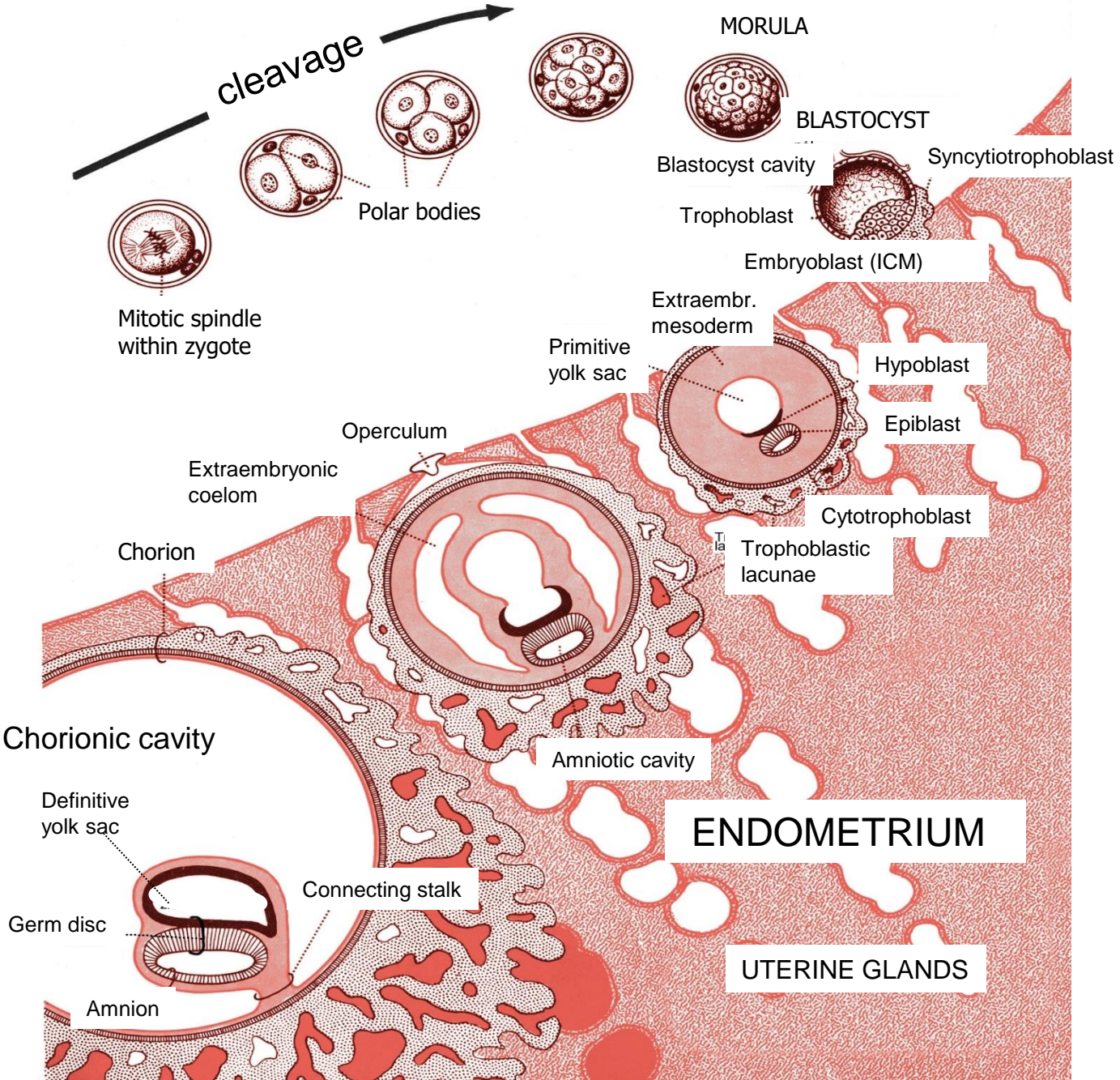
IMPLANTATION – DAY 10



IMPLANTATION – DAY 13



CLEAVAGE AND IMPLANTATION



Chorionic villi

Chorionic cavity

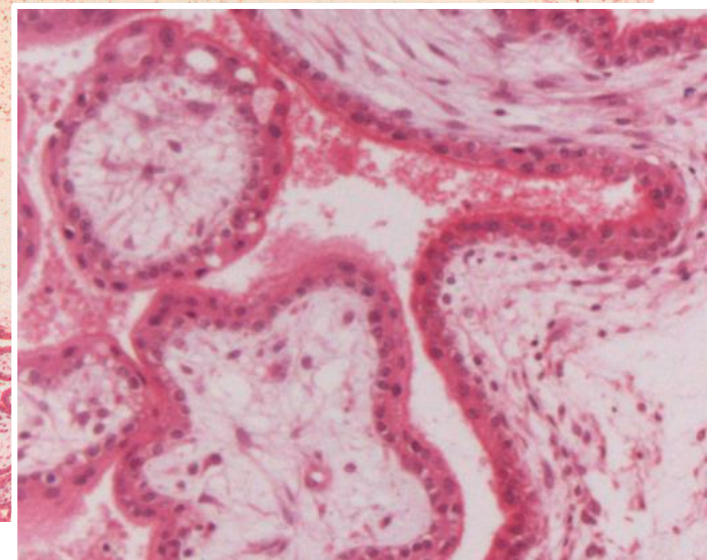
ys

as

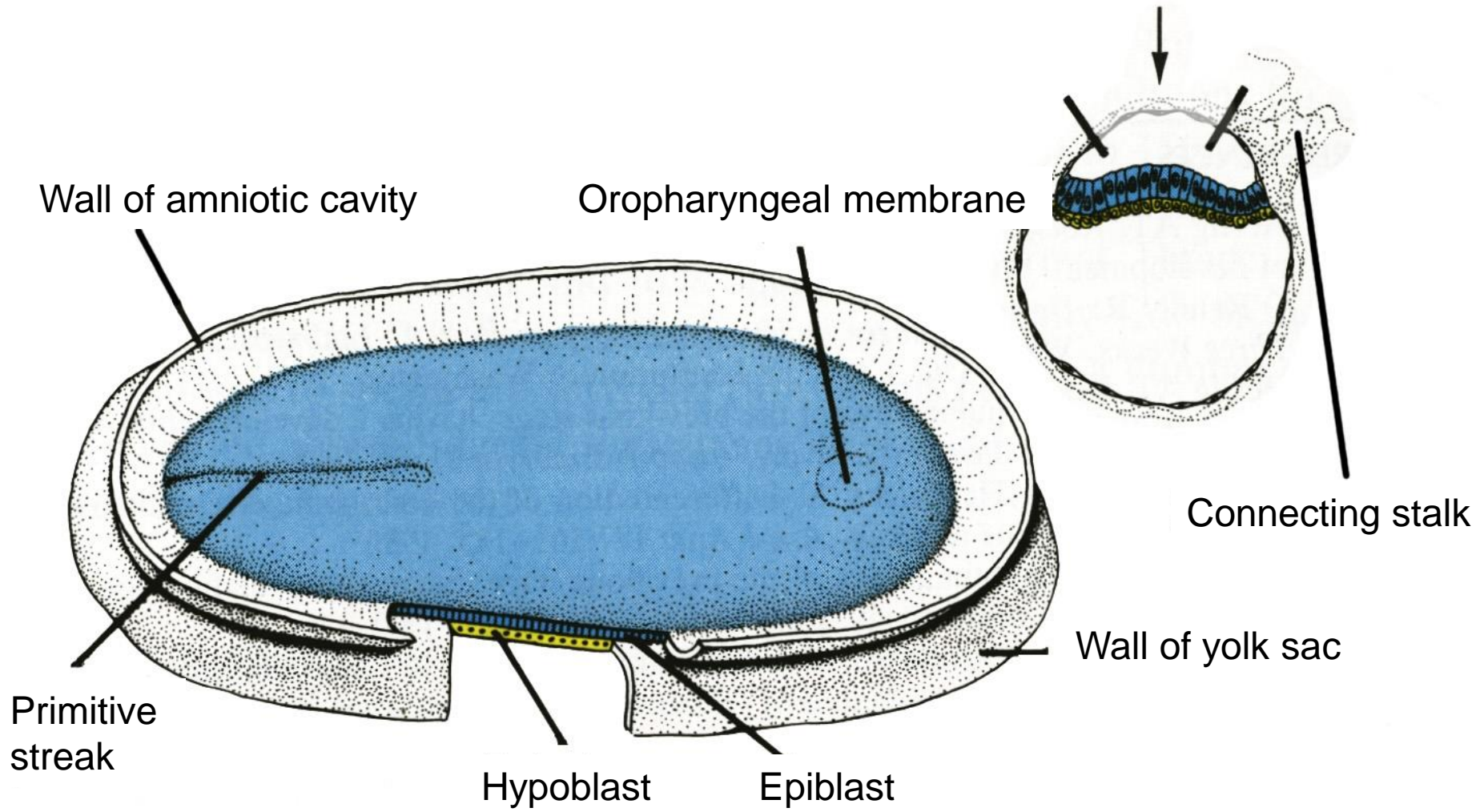
Connective stalk

Trilaminar germ disc

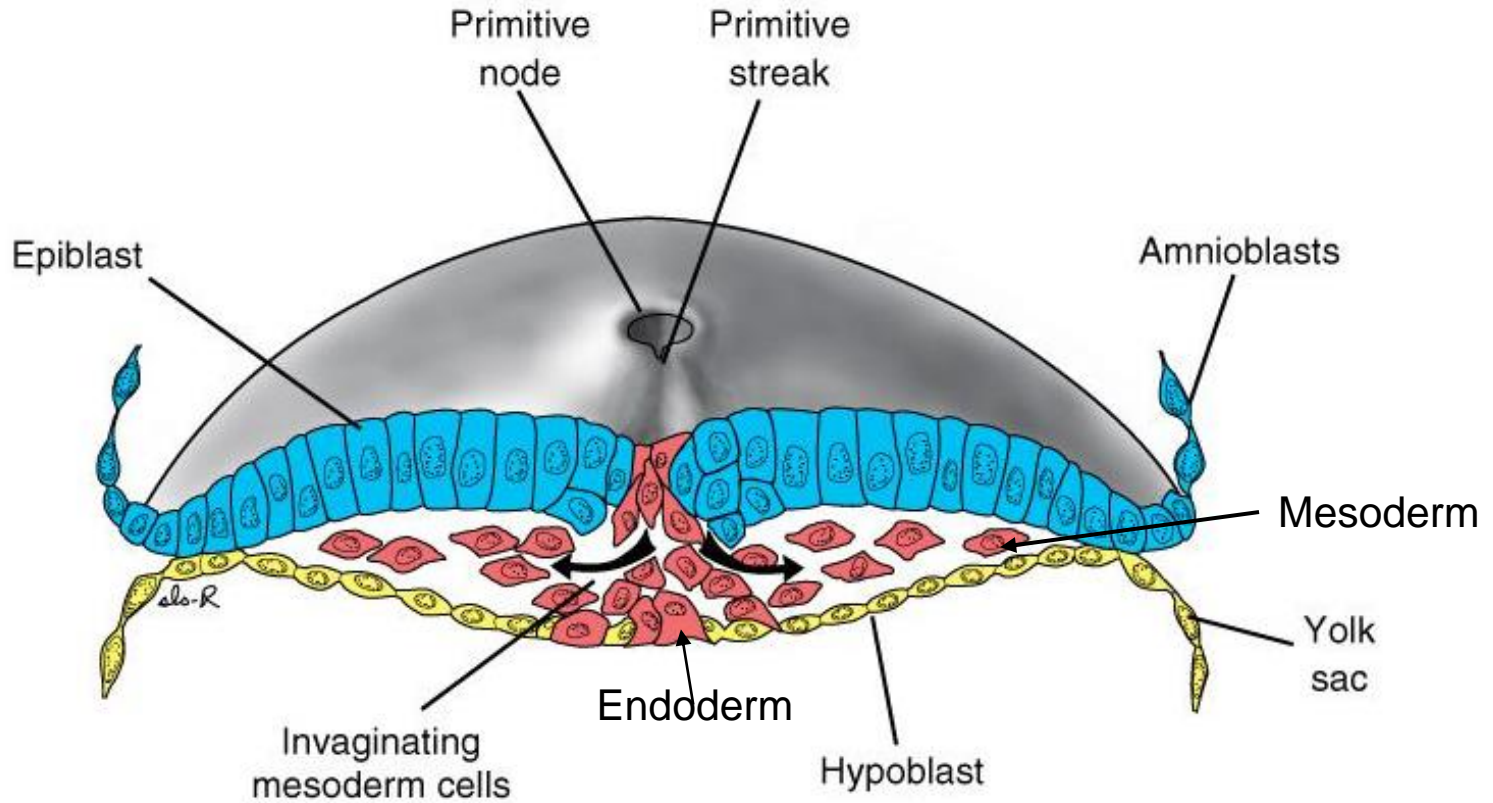
Extraembryonic mesoderm



DORSAL SIDE OF GERM DISC – DAY 14



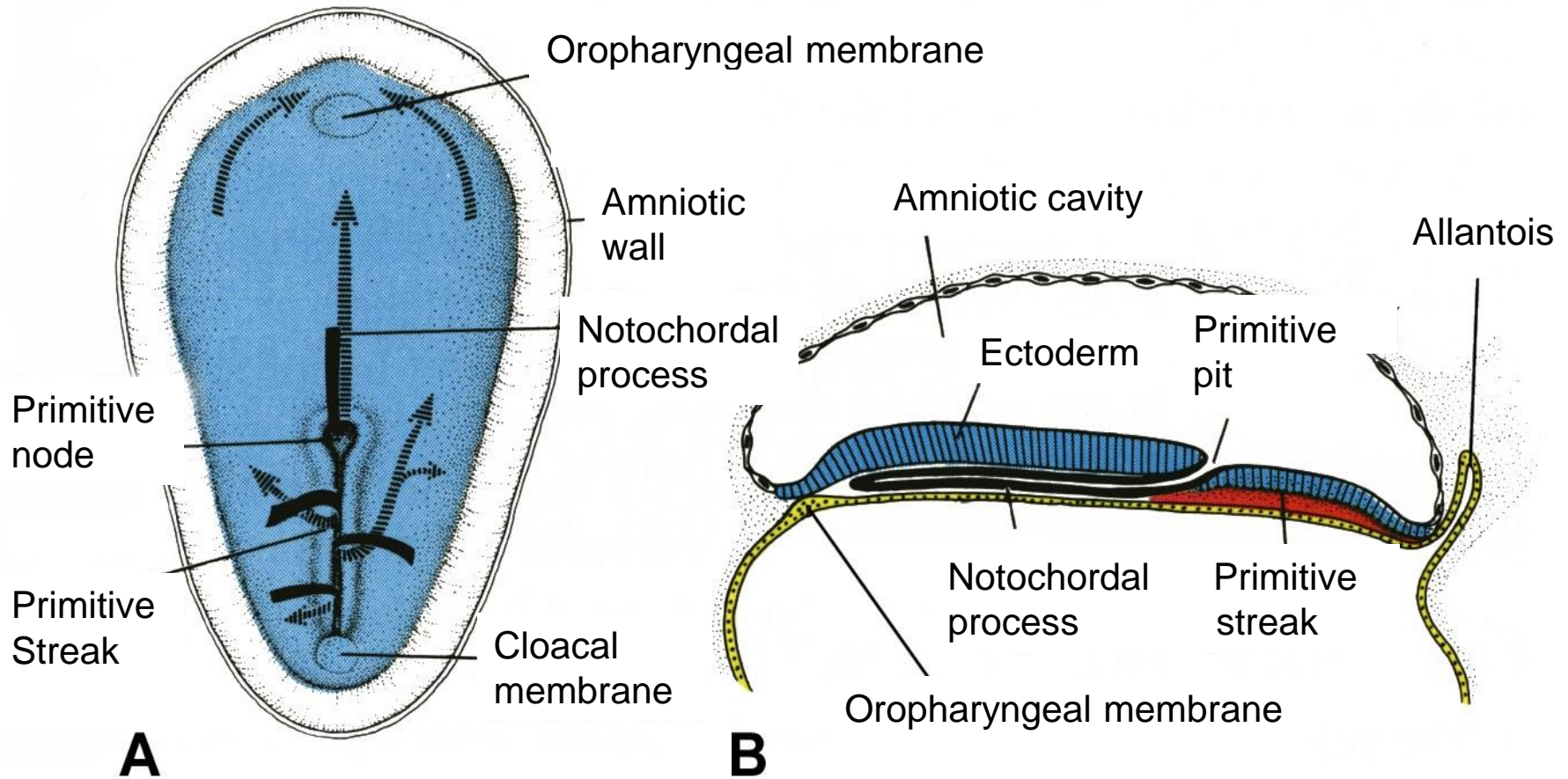
Germ disc day 16



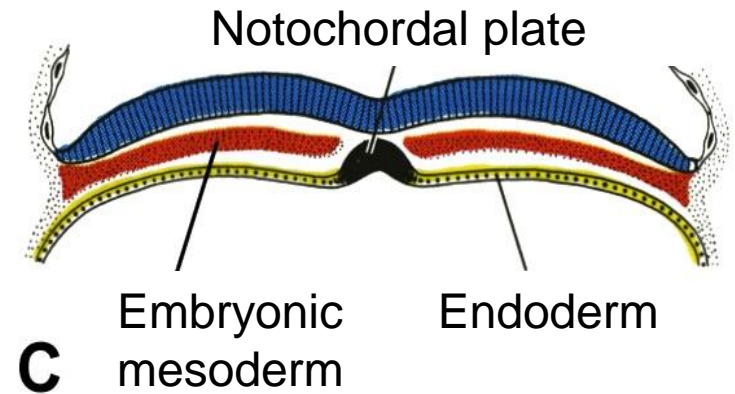
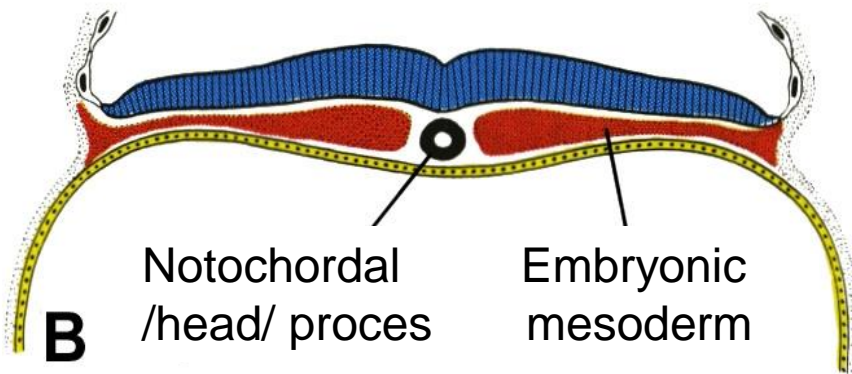
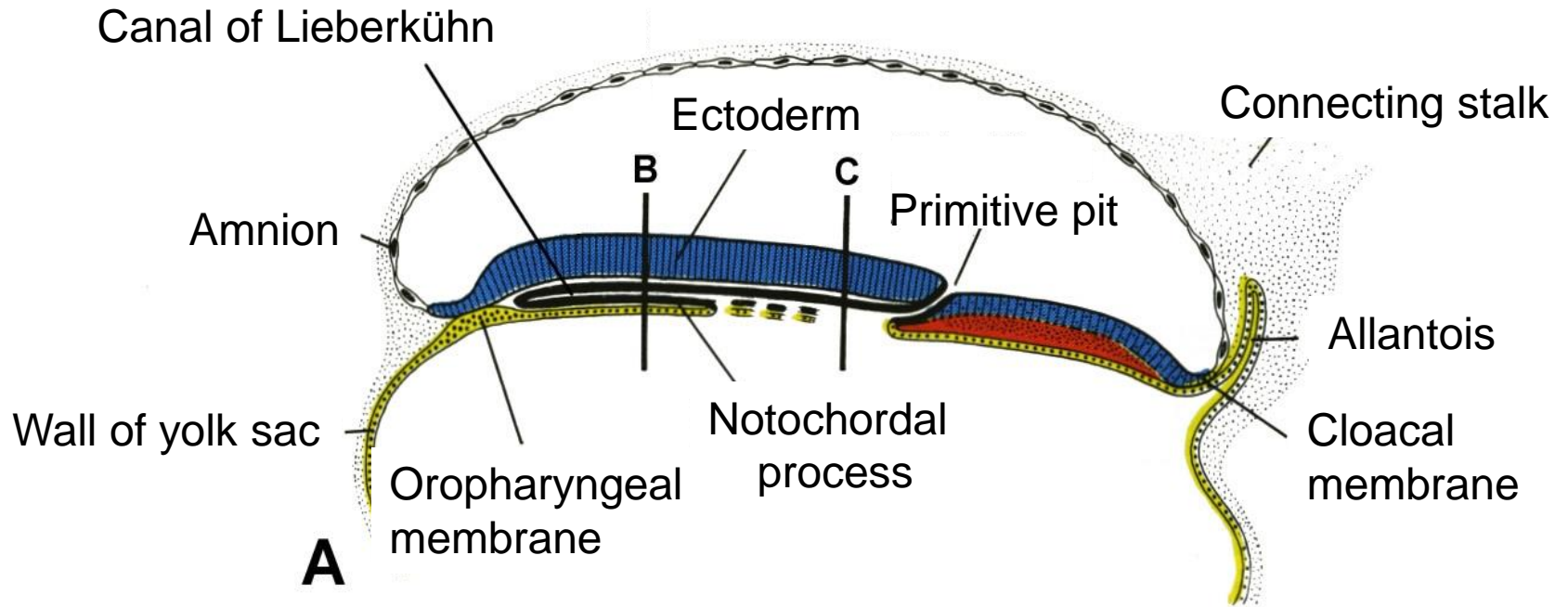
GERM DISC - DAY 16

A – view on dorsal side

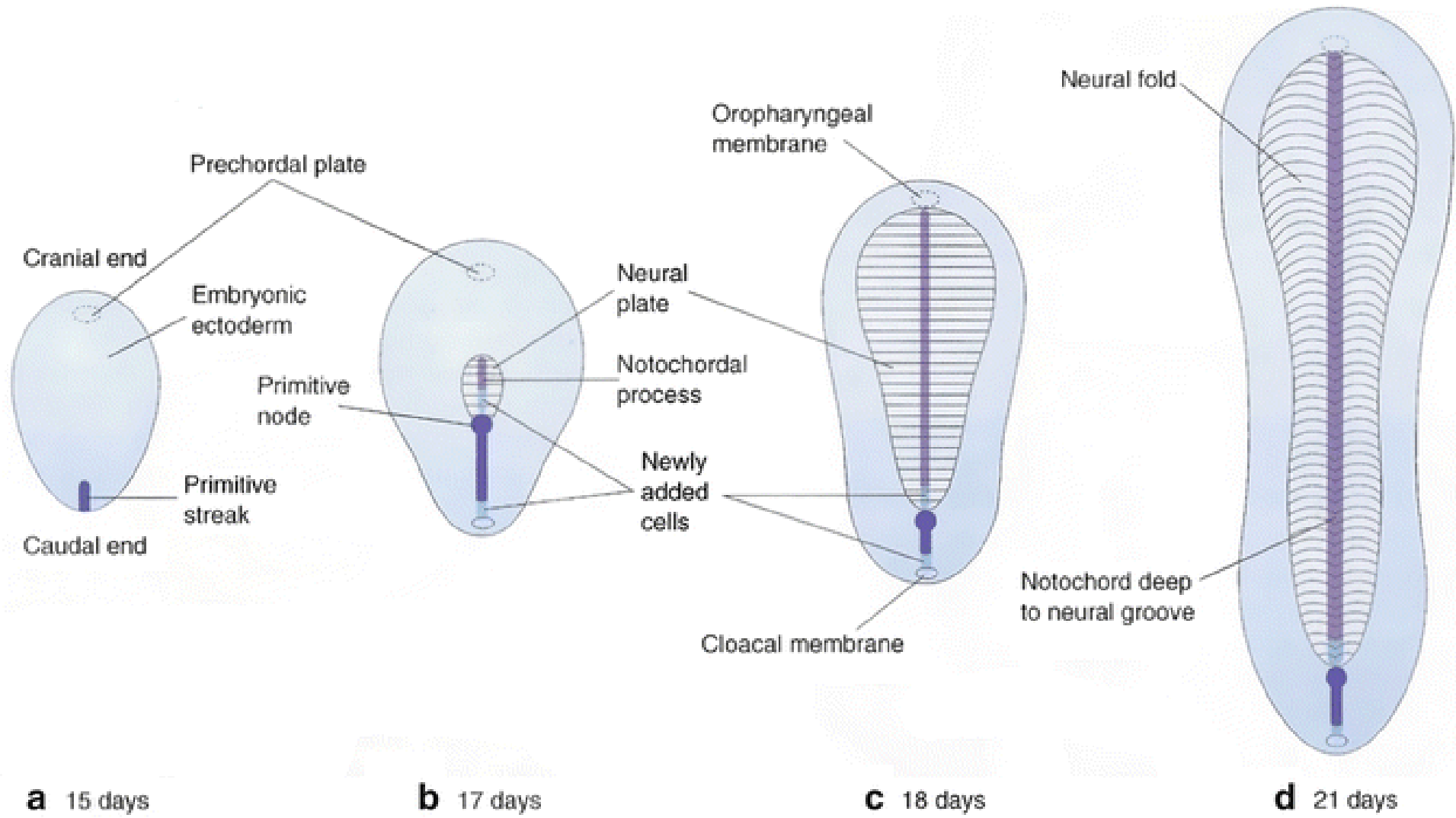
B – longitudinal section



GERM DISC - DAY 17



A – longitudinal section, **B**, **C** – transversal sections



GENERAL EMBRYOLOGY I

- Set of embryological schemes I
- Atlas of Cytology and Embryology – pg. 71 – 79

- Discussion
- 3 embryological schemes according to teacher instructions