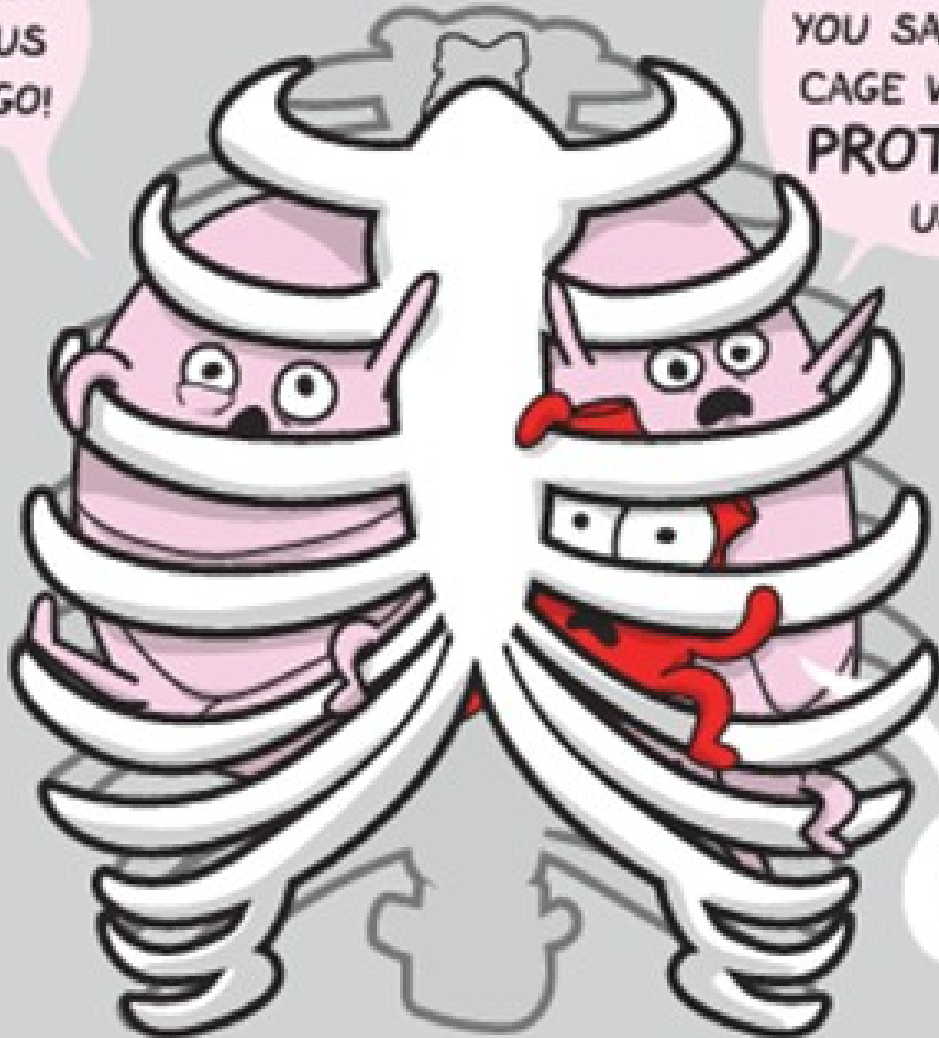


LET
US
GO!

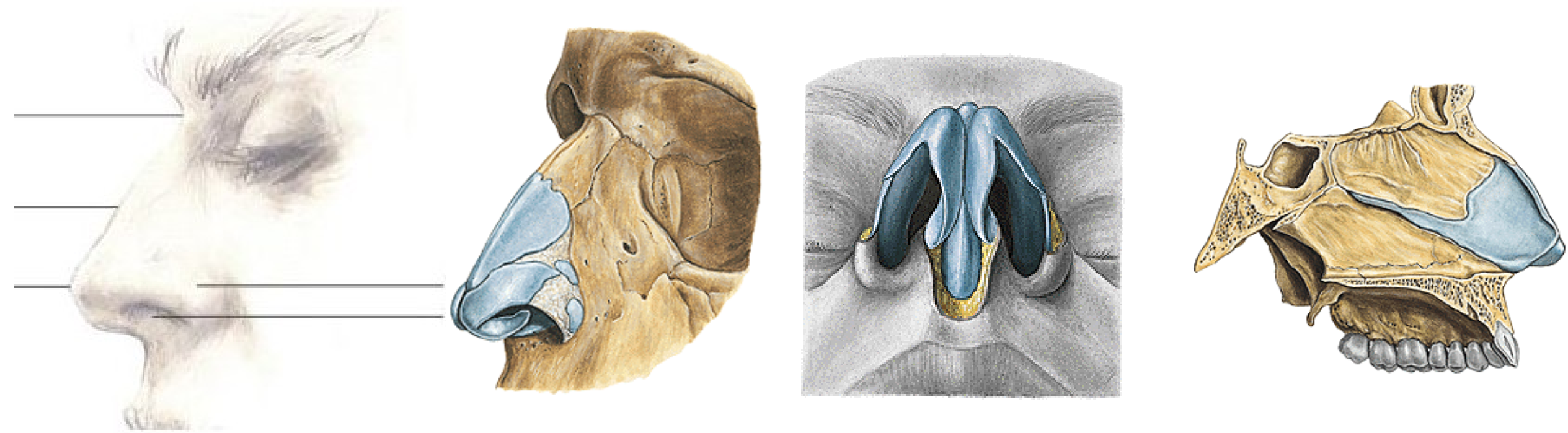
YOU MONSTER!
YOU SAID THIS
CAGE WAS TO
PROTECT
US!



I taste
blood!

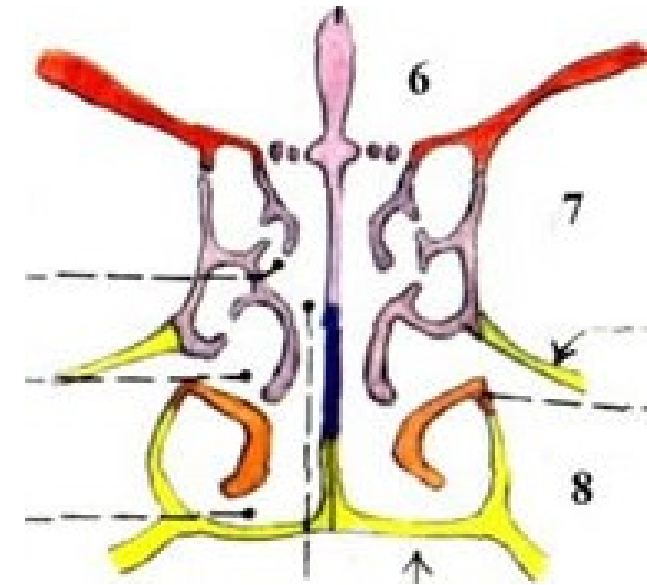
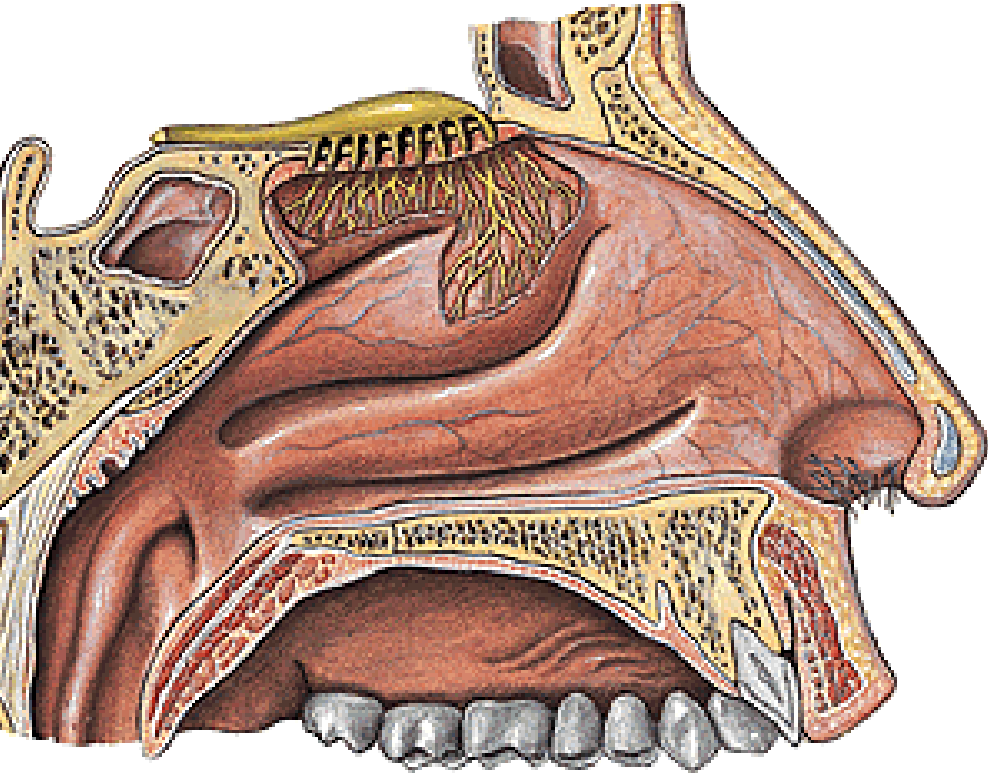
What happens during a run.

Q External nose (*nasus externus*): parts, structural background

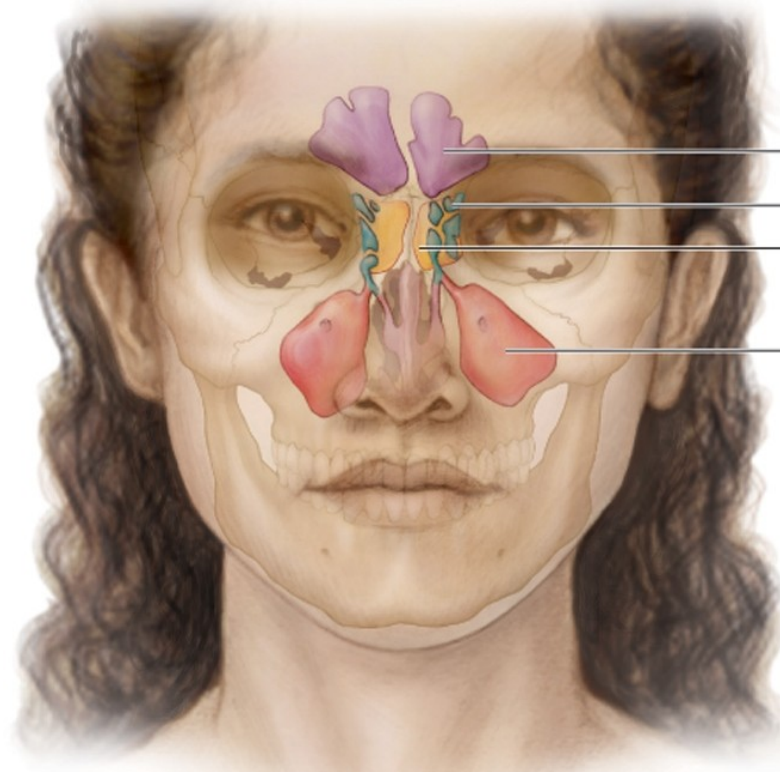
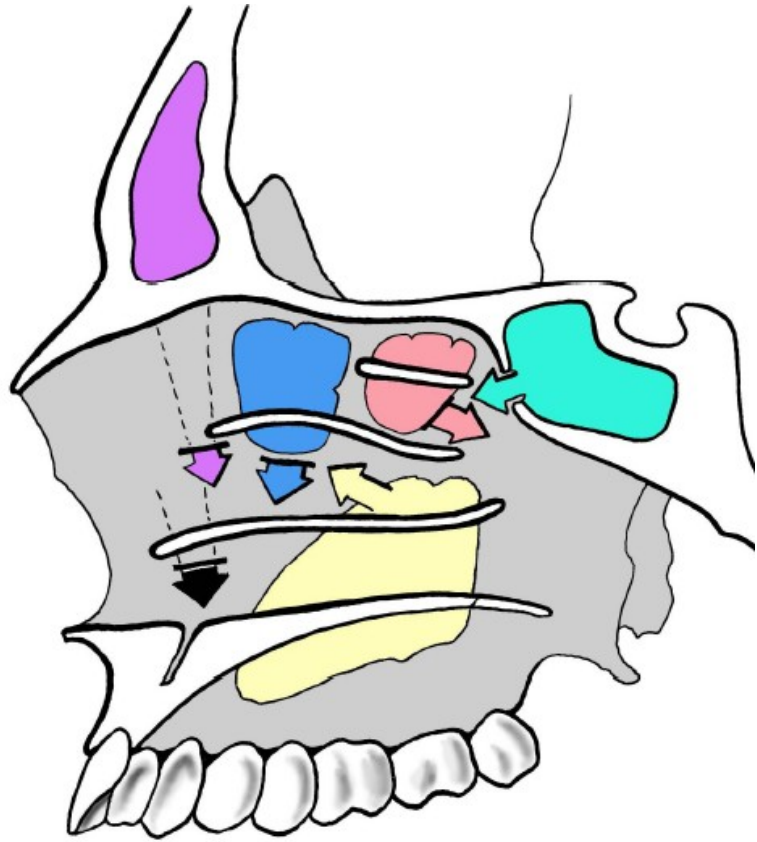


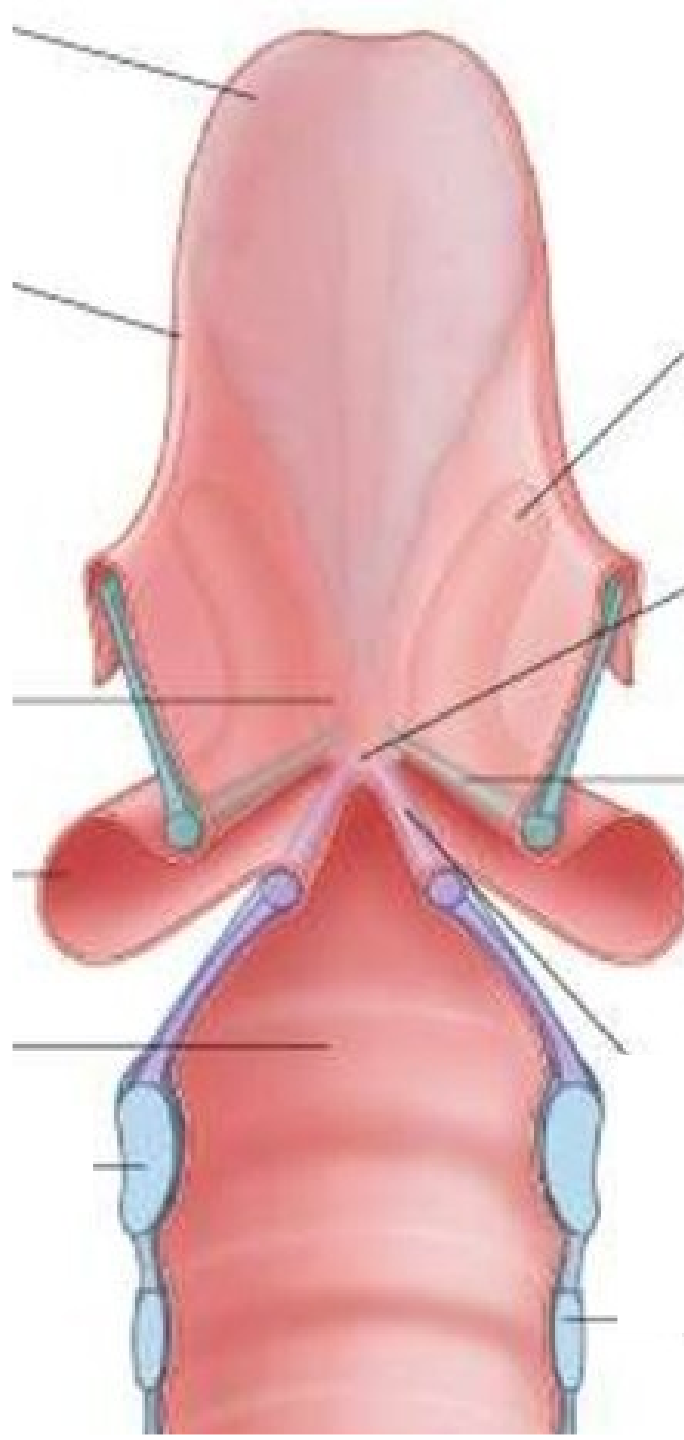
Q Nasal vestibule (*vestibulum nasi*)

Nasal cavity (*cavitas nasi*): borders, functions, regions



Q Name the paranasal sinuses



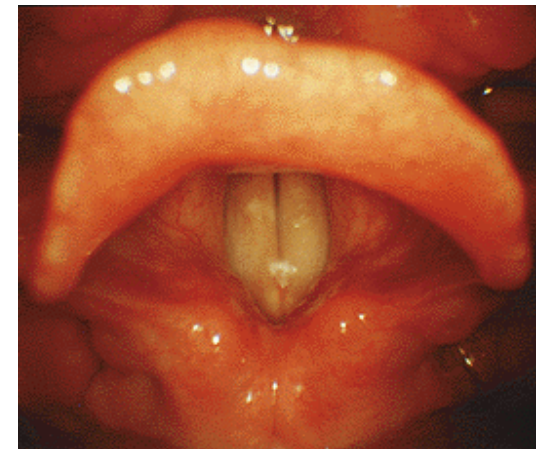


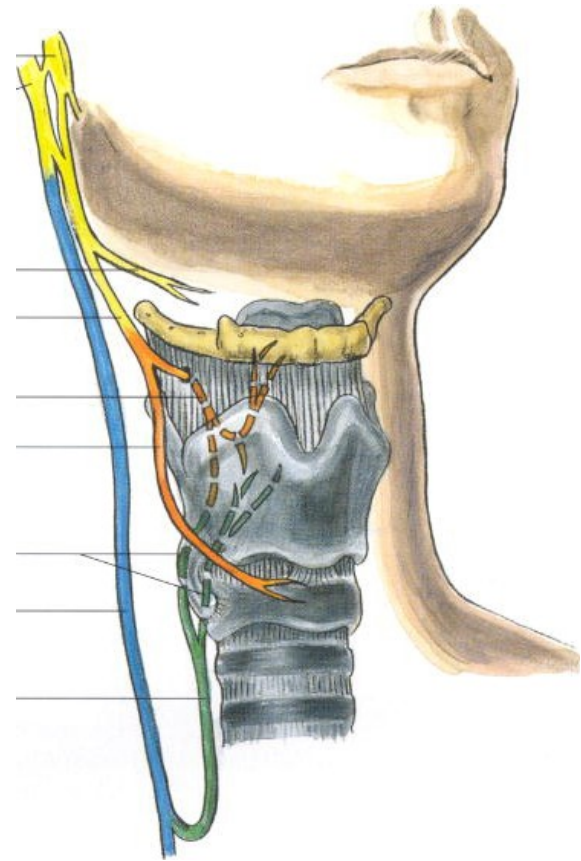
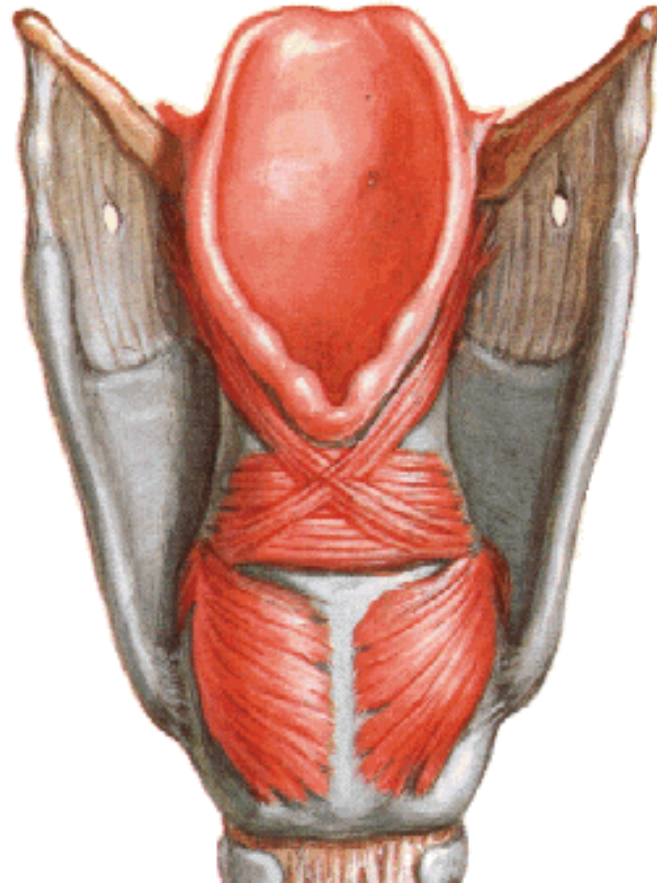
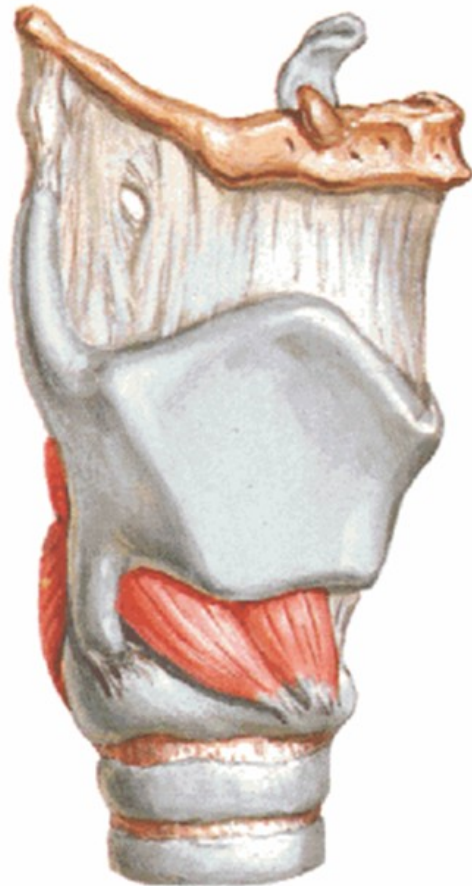
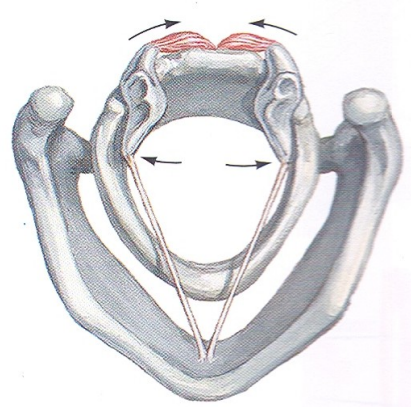
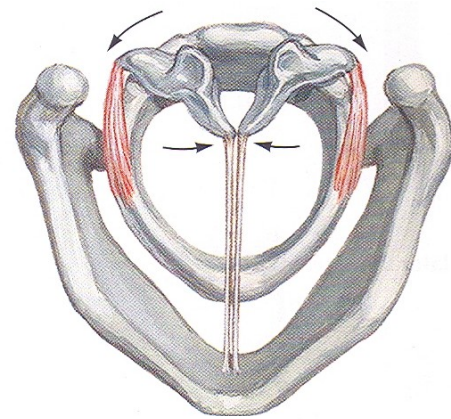
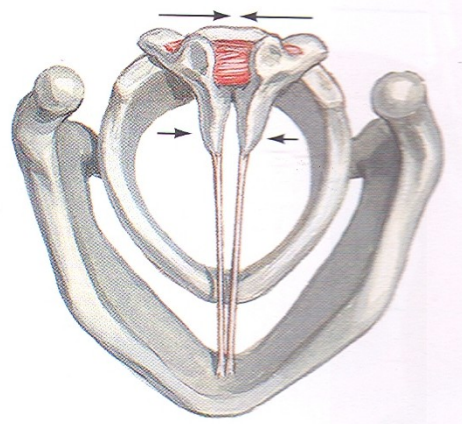
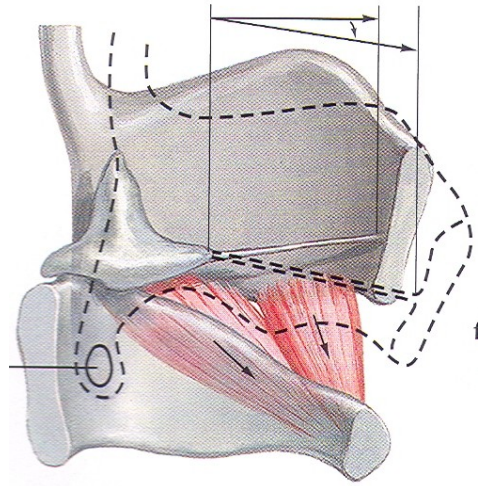
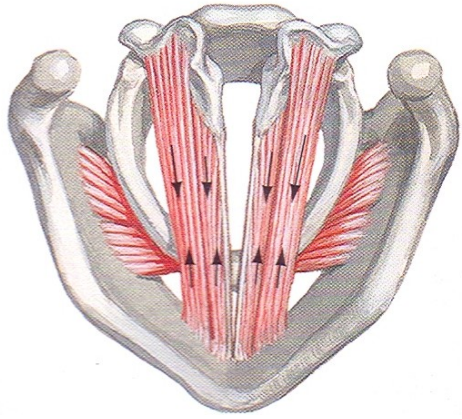
Q Larynx: cartilages

Larynx: joints

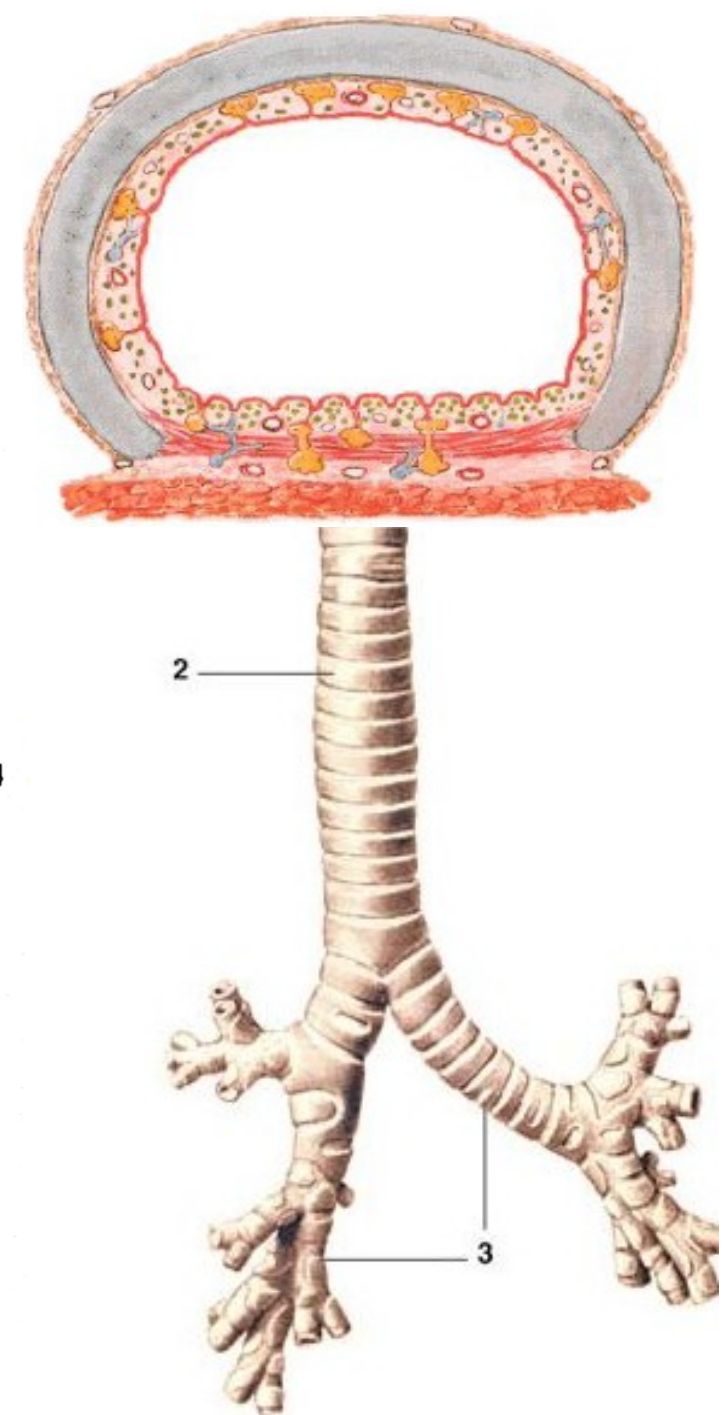
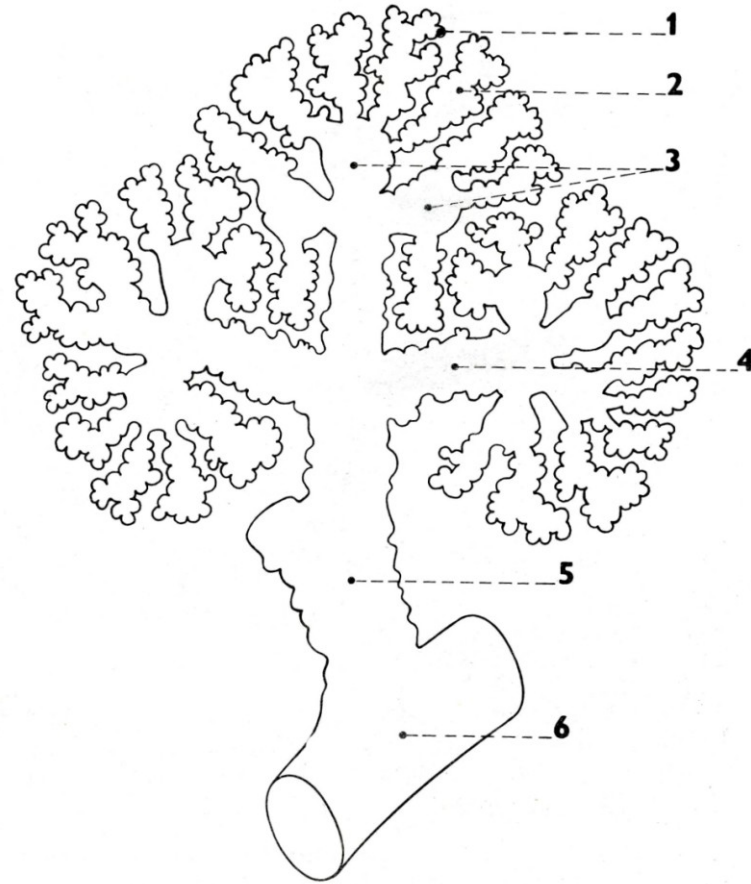
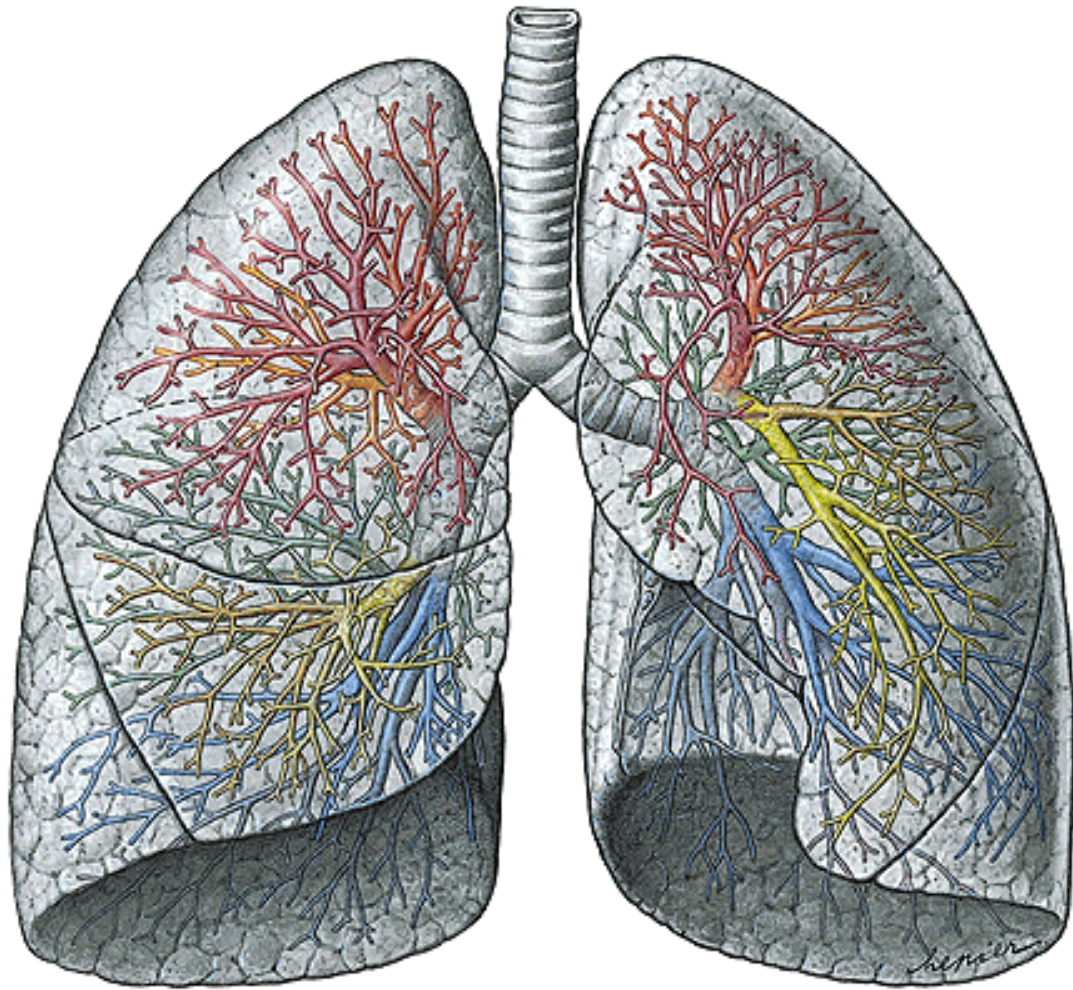
Larynx: muscles, functional divisions

Larynx: laryngeal cavity



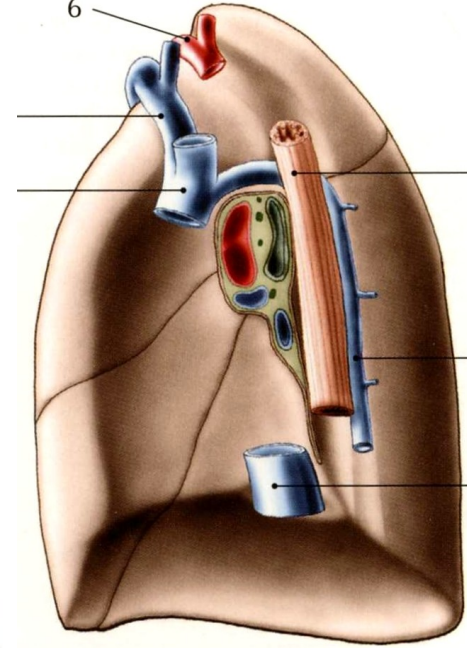
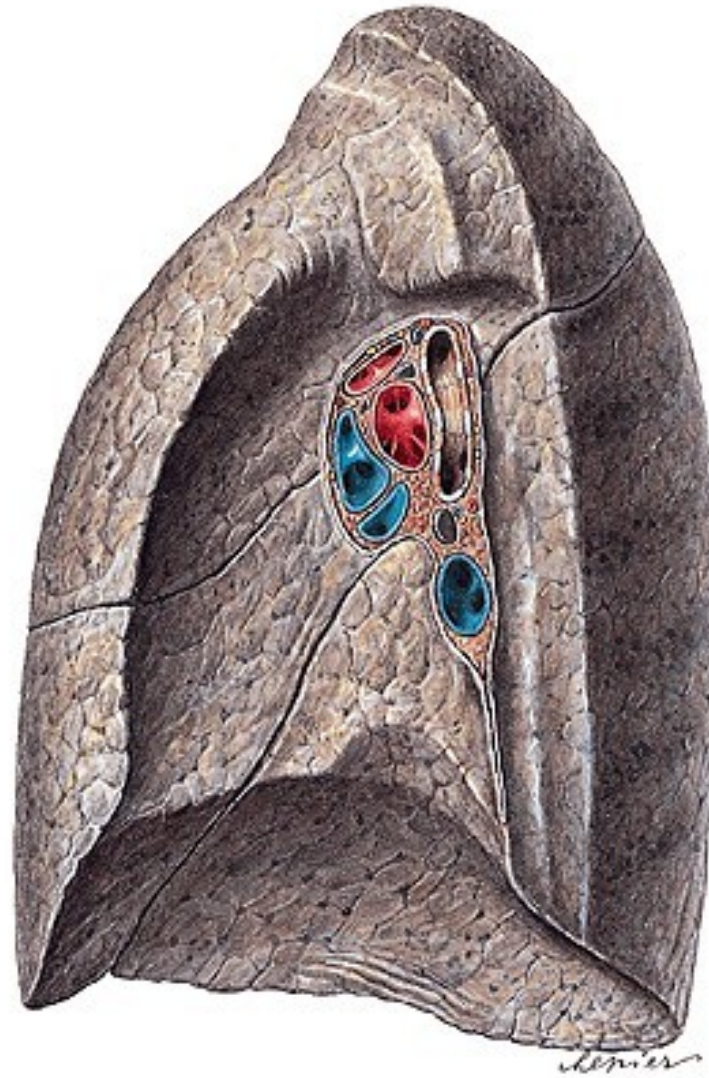
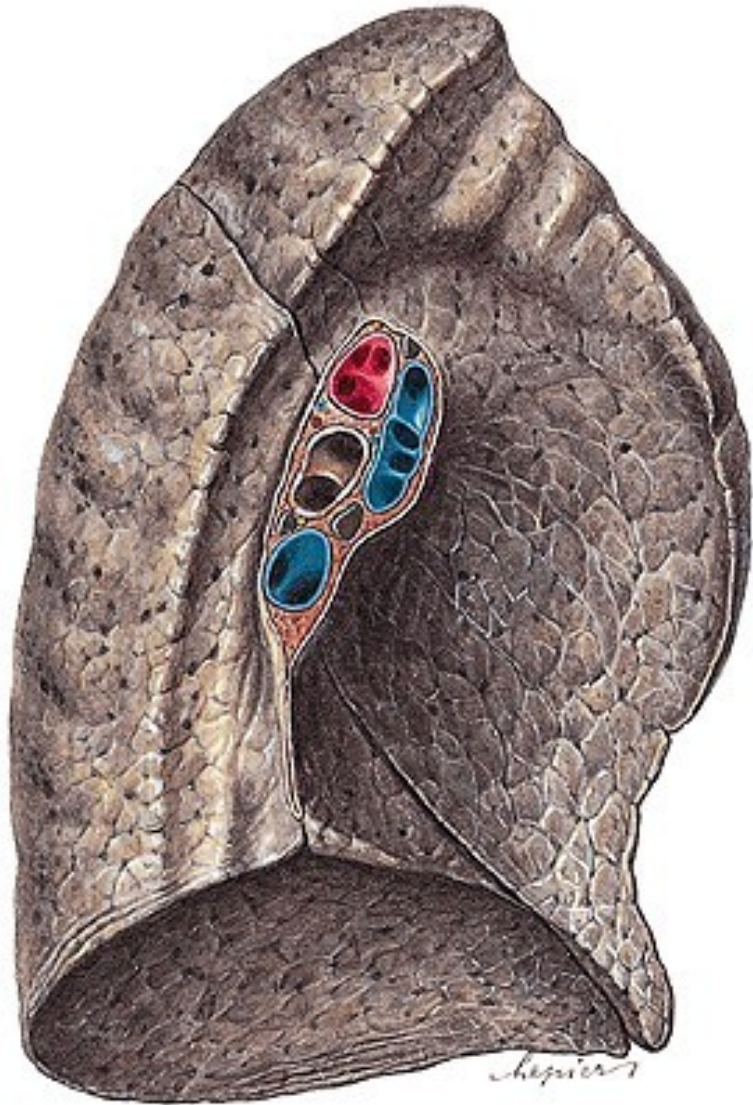
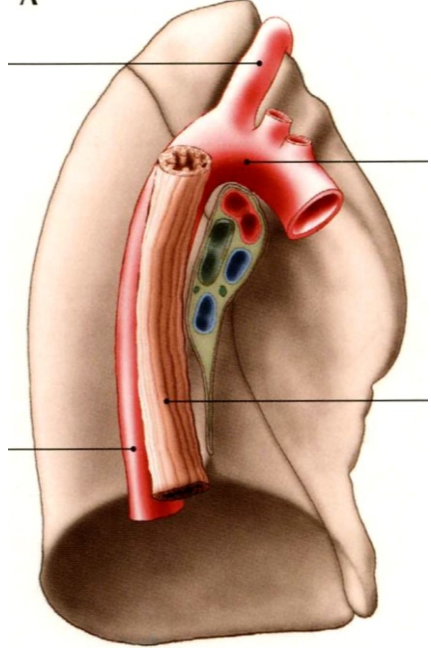


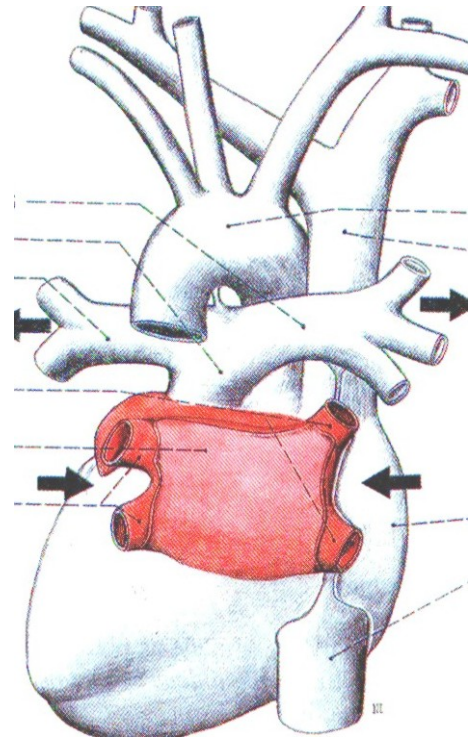
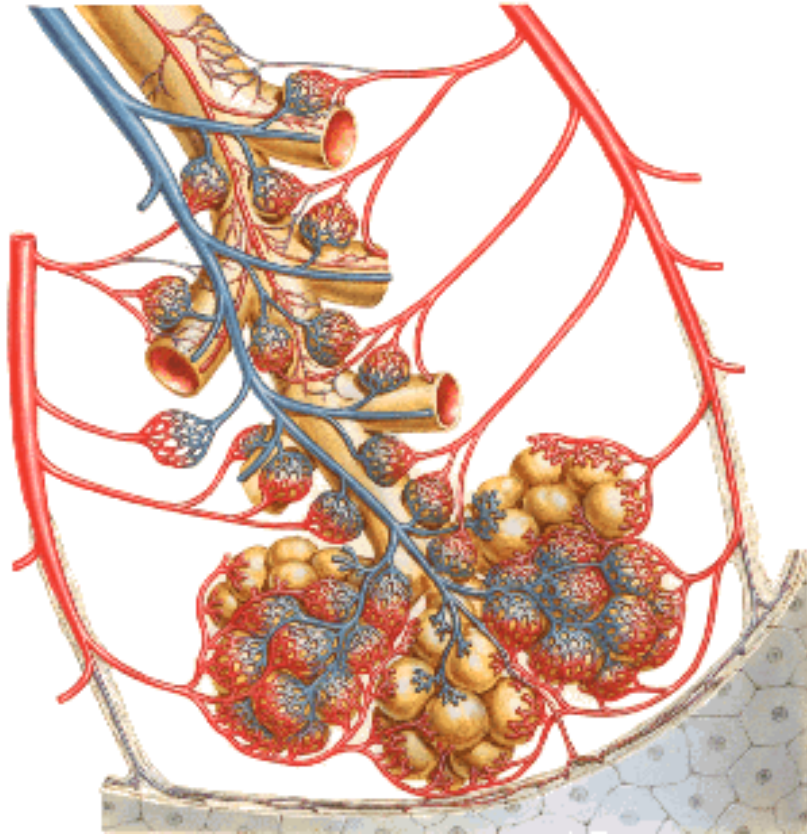
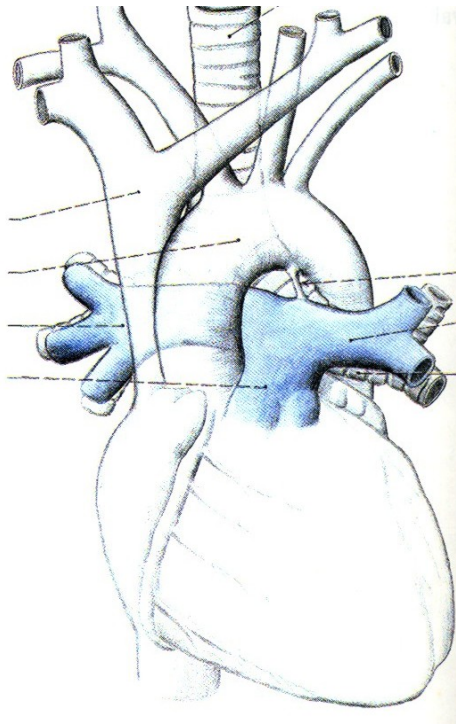
Q Trachea: structure of the wall, syntopy; principal bronchi, arbor bronchialis



Q Lungs (*pulmones*): gross anatomy, lobes, syntopy

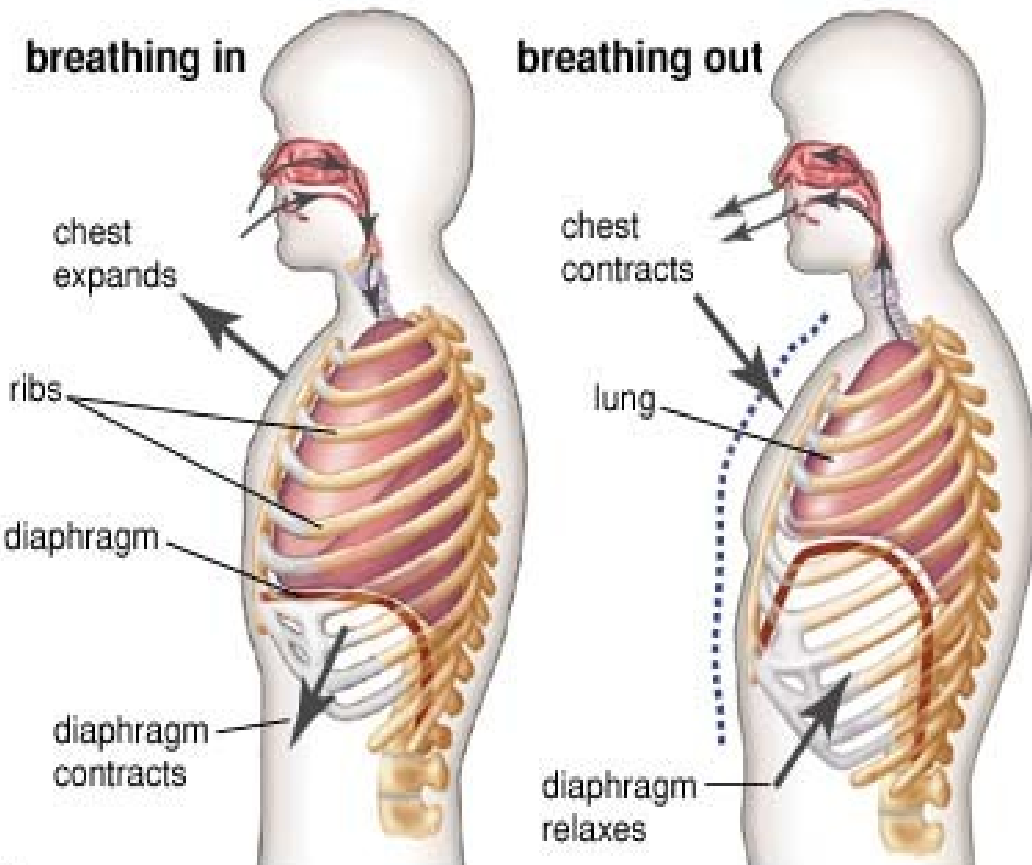
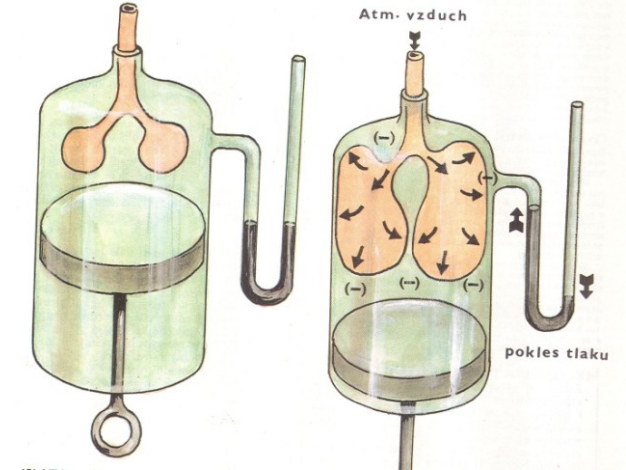
Root of lung (*radix pulmonis*)



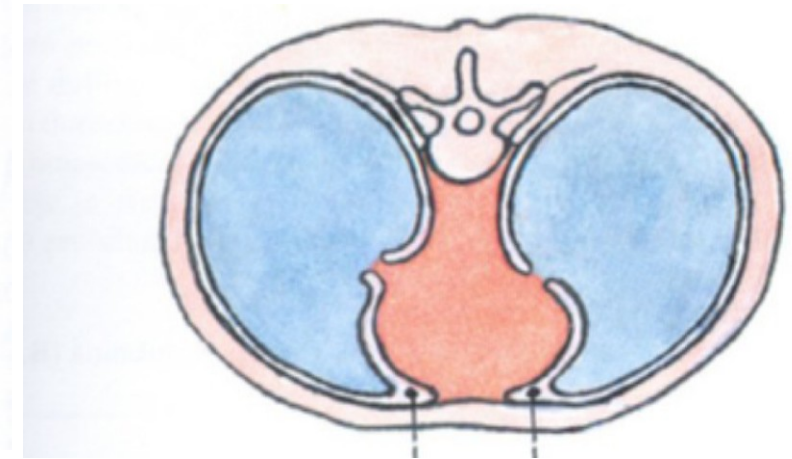
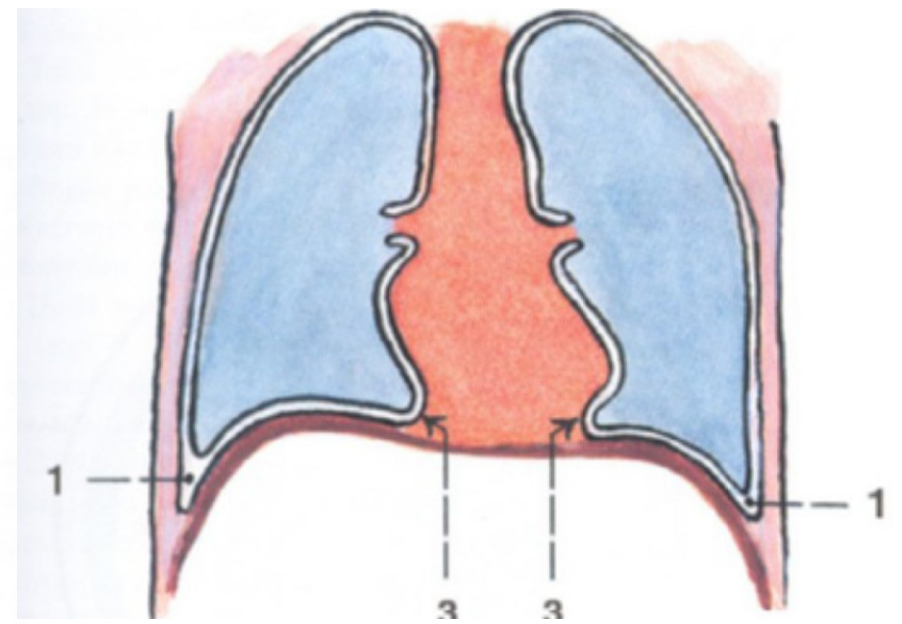
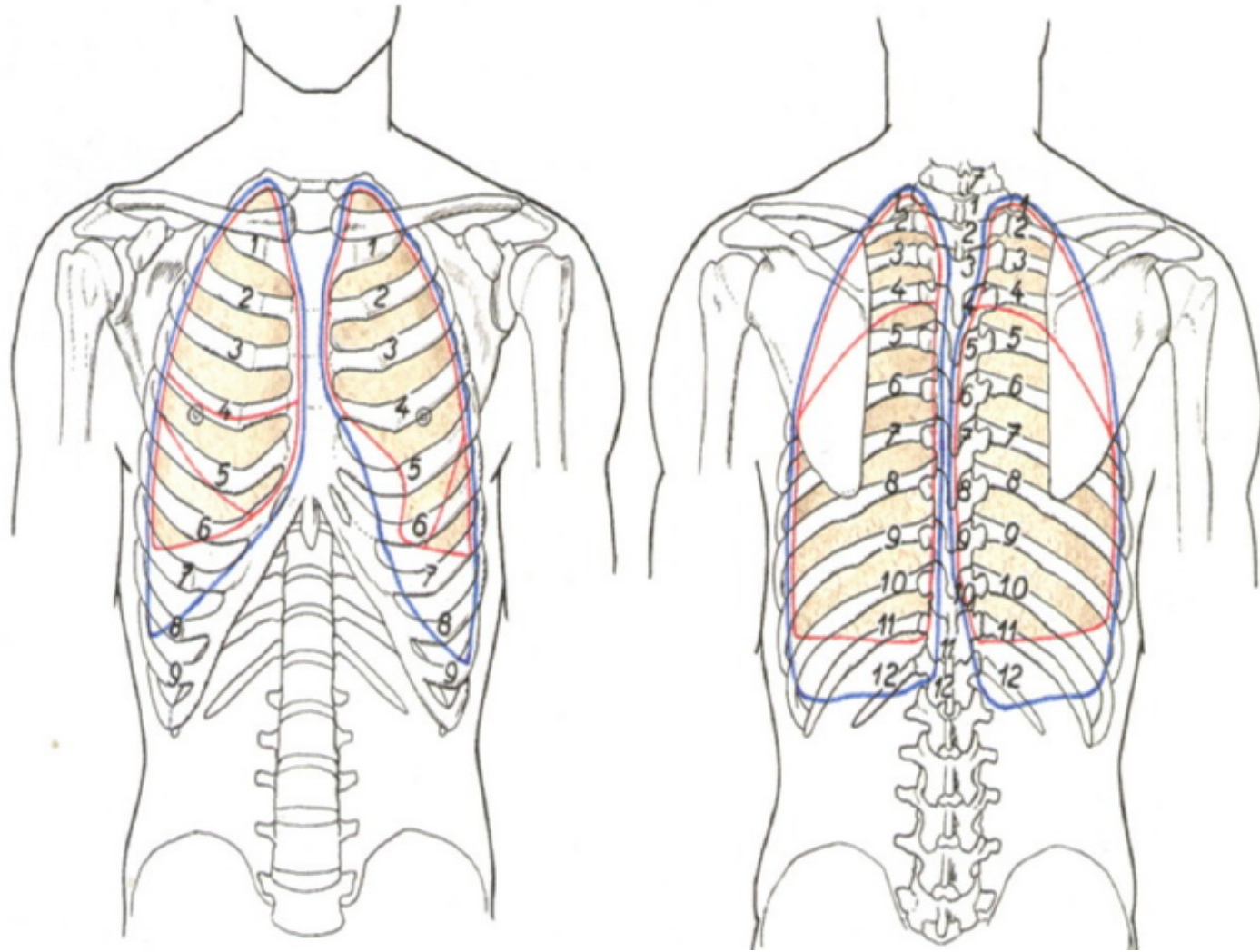


Q Mechanism of inspiration, main and auxillary muscles

Mechanism of expiration, main and auxillary muscles



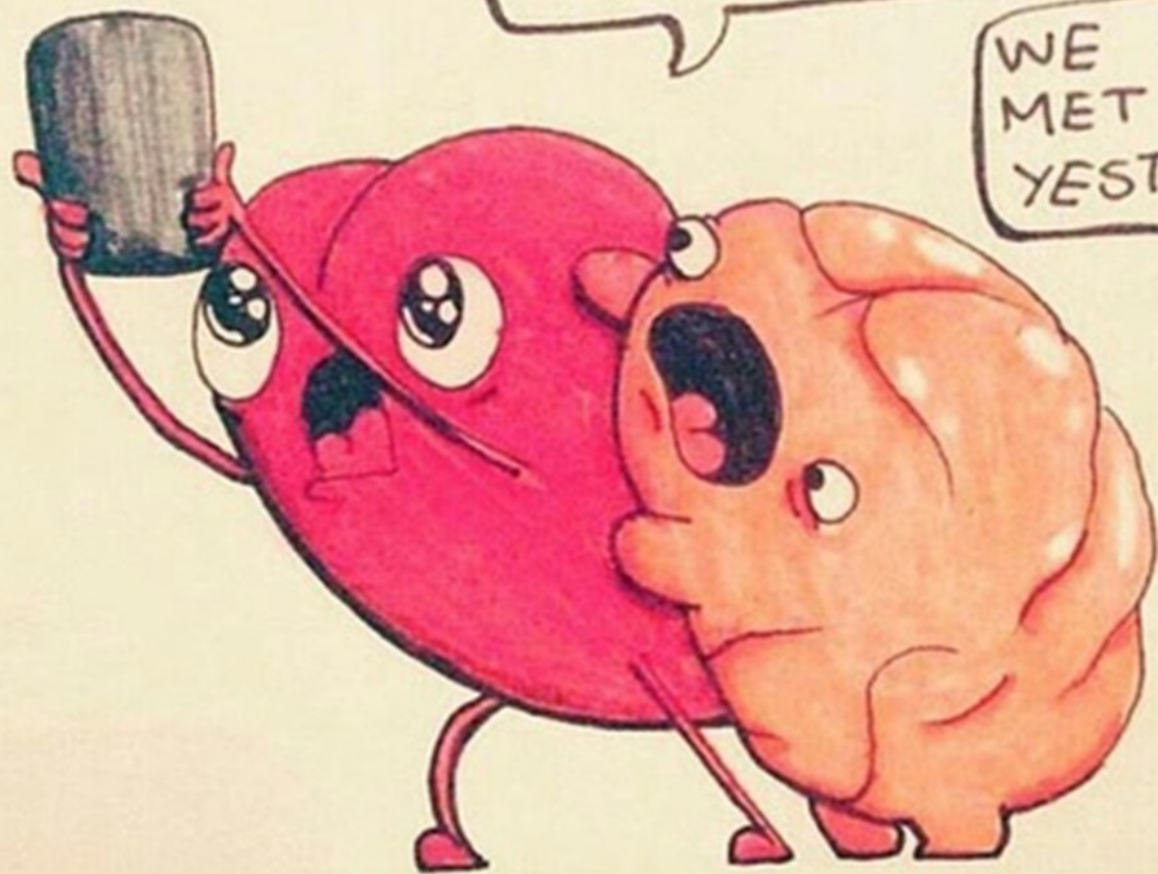
Q Pleura: description, division, pleural recesses, connections of parietal and visceral pleurae



DON'T PRESS SEND!

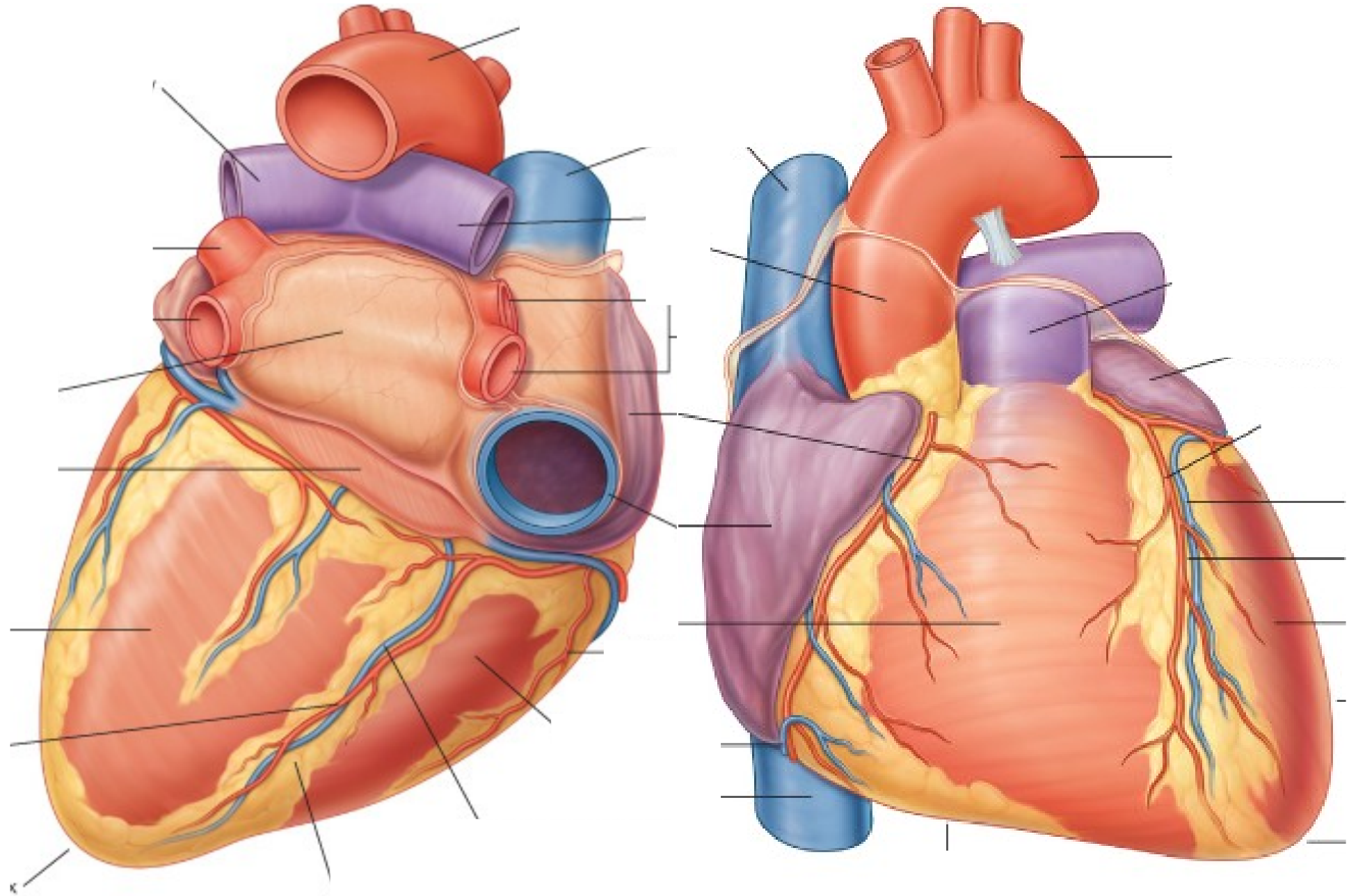
BUT WE'RE
IN LOVE!

WE ONLY
MET HIM
YESTERDAY

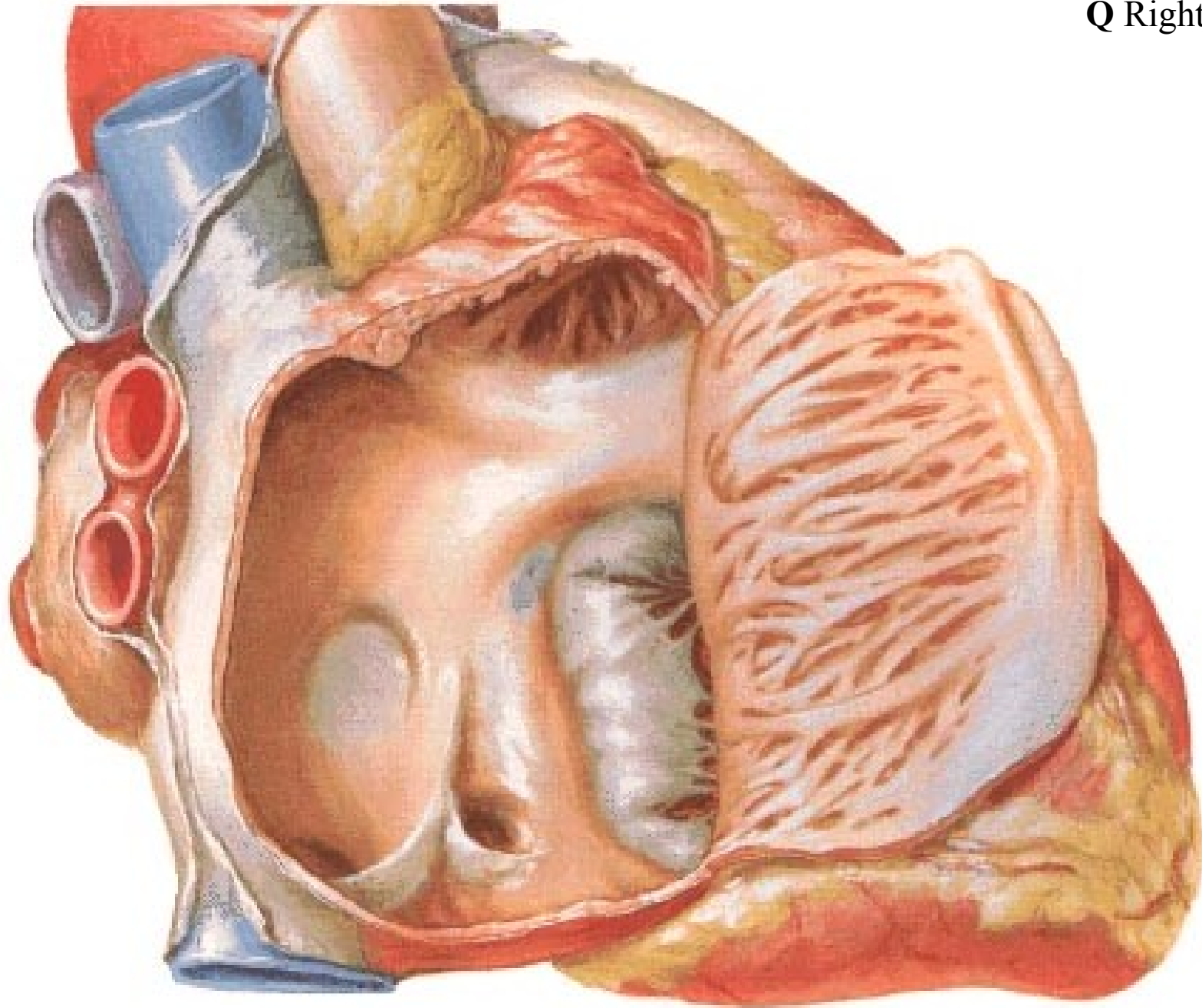


thine

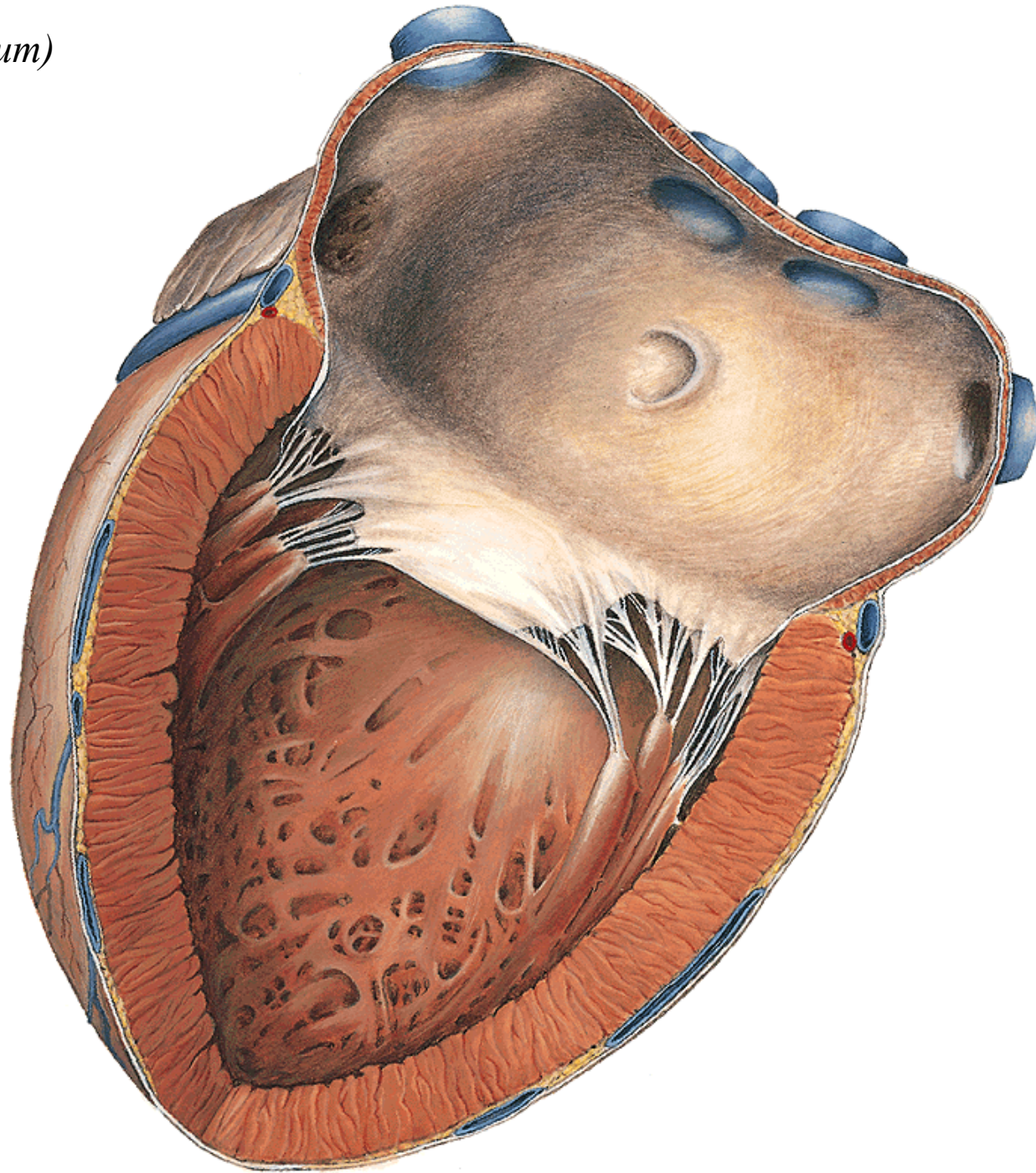
Q Heart (*cor*): gross anatomy, syntopy



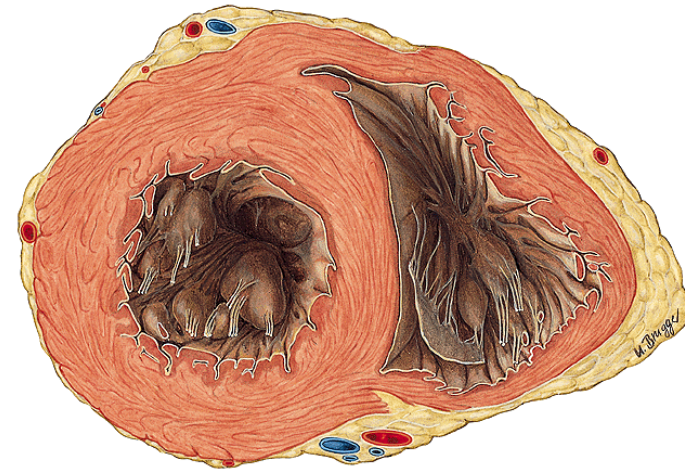
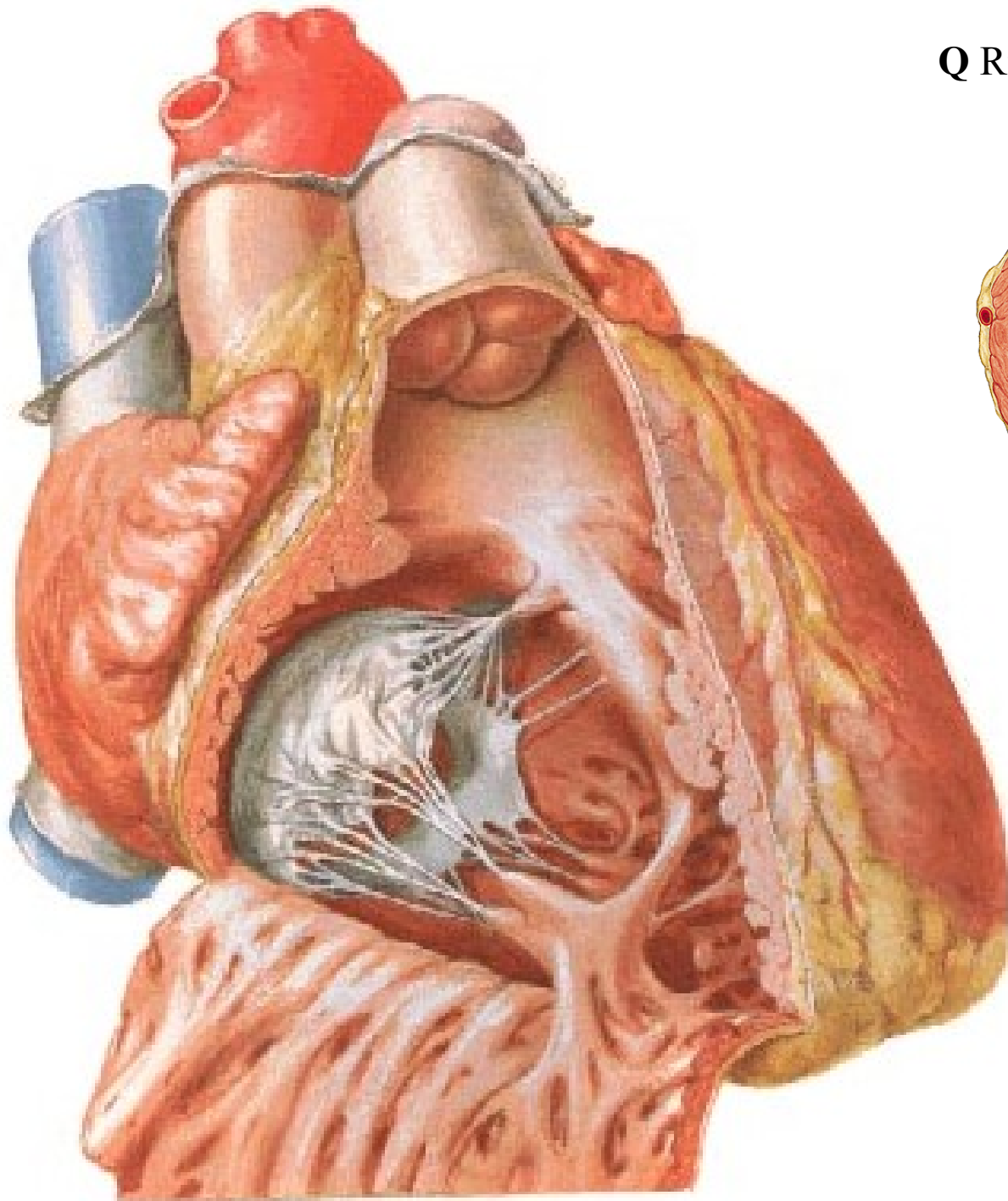
Q Right atrium (*atrium dextrum*)



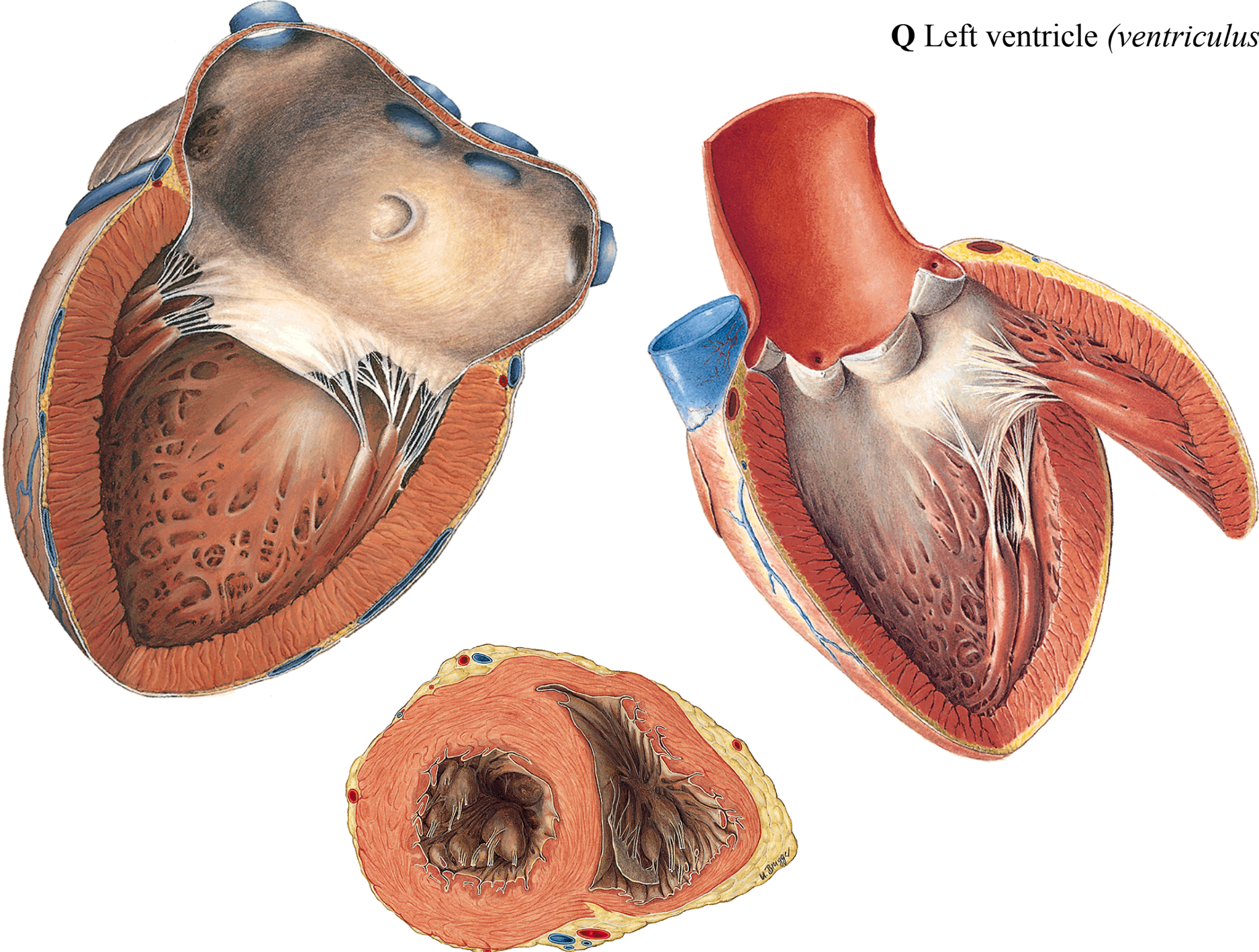
Q Left atrium (*atrium sinistrum*)

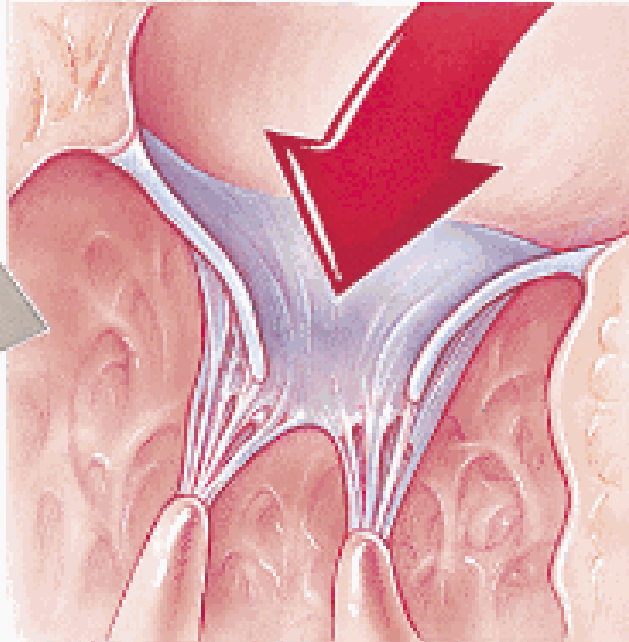


Q Right ventricle (*ventriculus dexter*)



Q Left ventricle (*ventriculus sinister*)

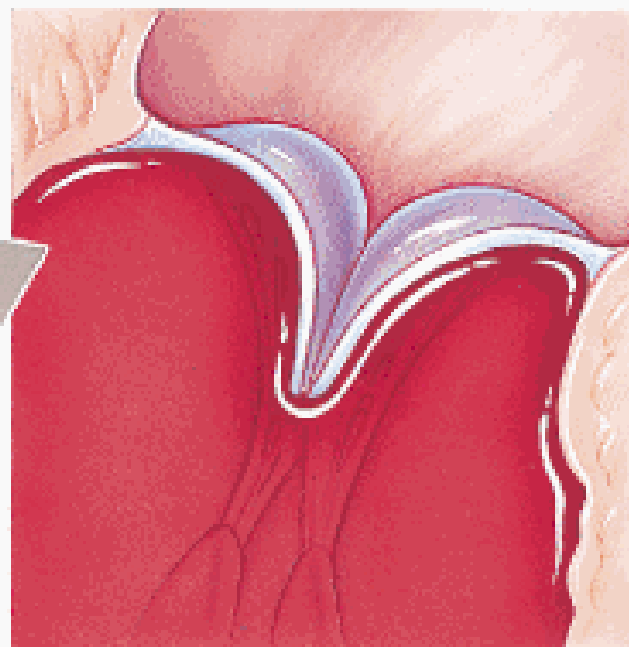




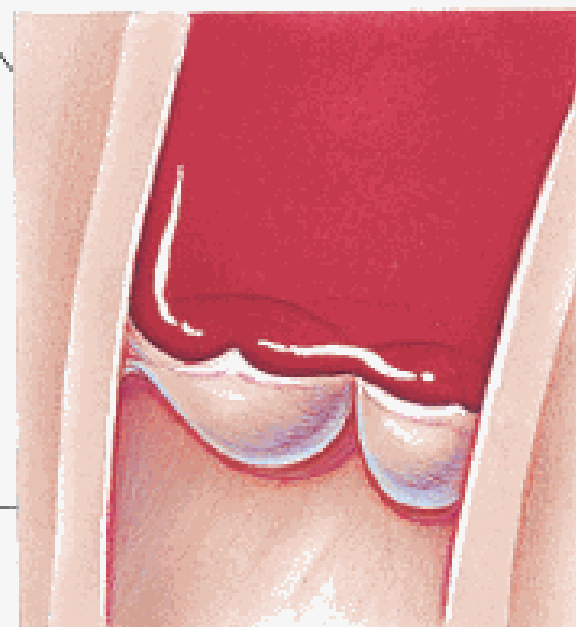
Atrioventricular valve open



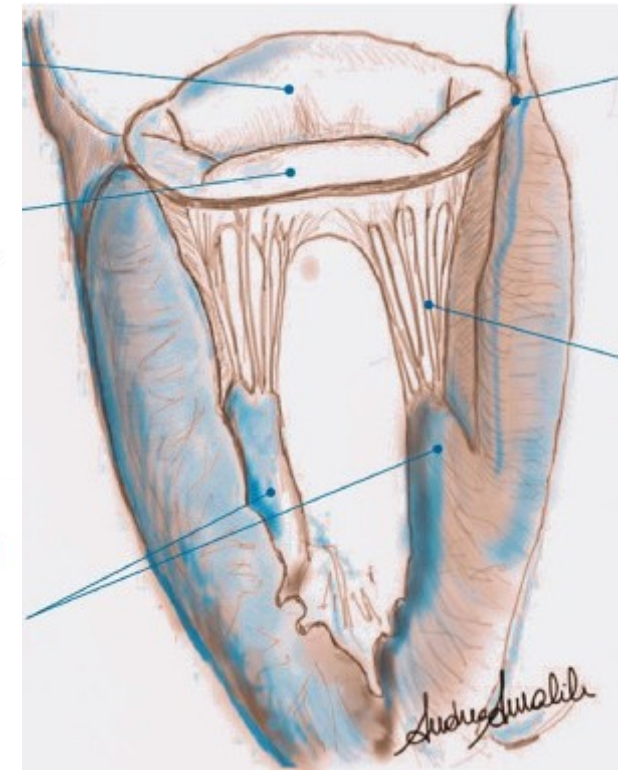
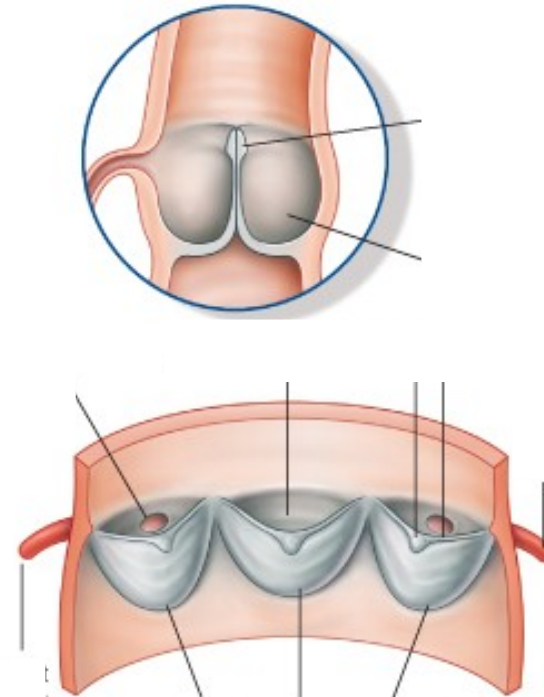
Semilunar valve open



Atrioventricular valve closed

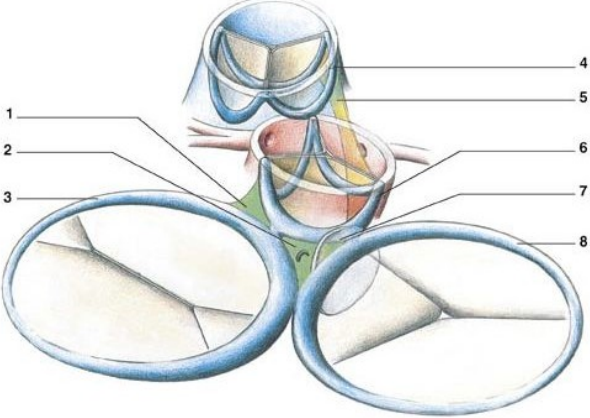


Semilunar valve closed

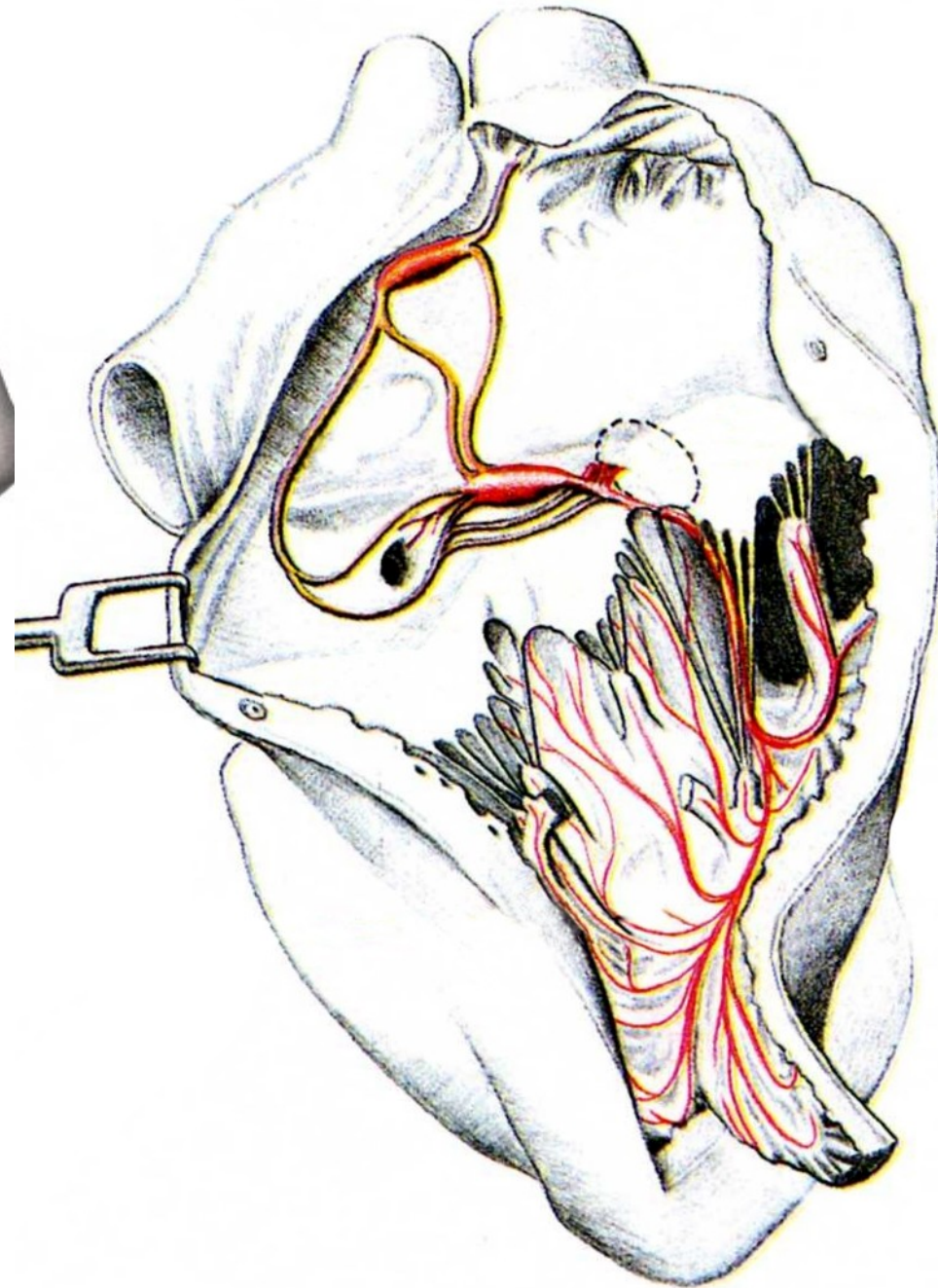
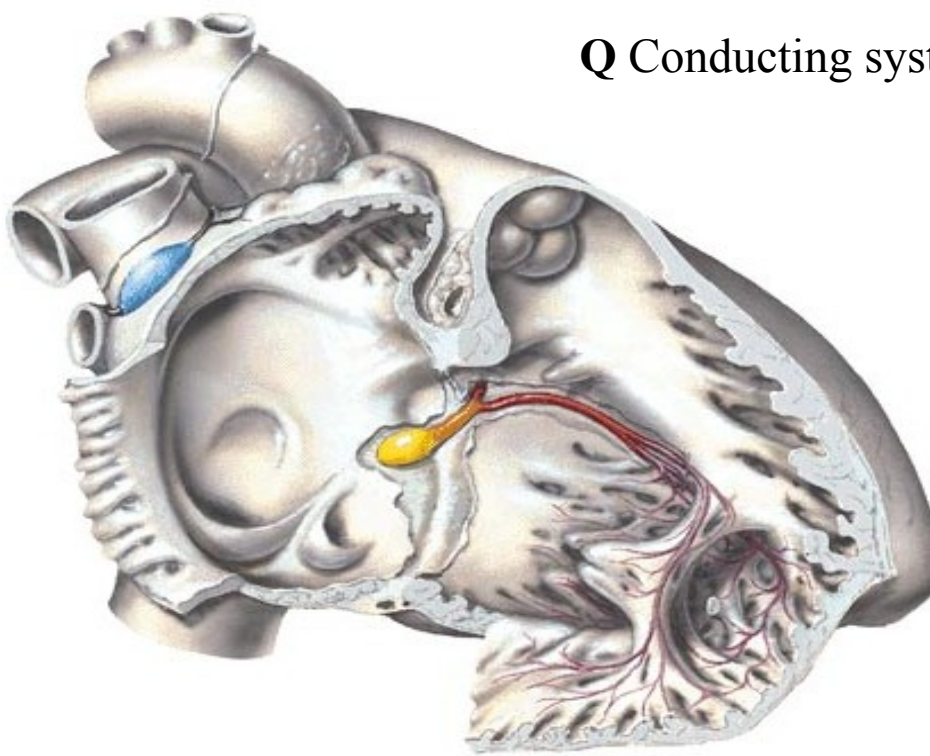


Q Cardiac valves

Q Structure of the heart, cardiac skeleton

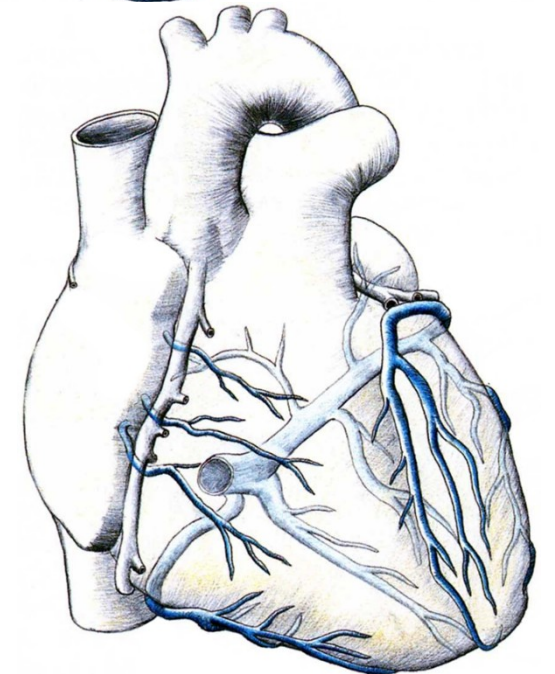
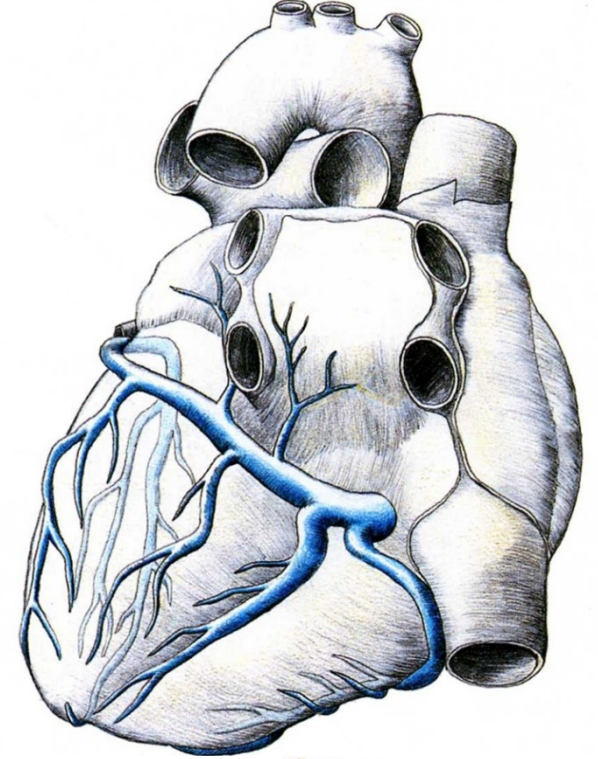
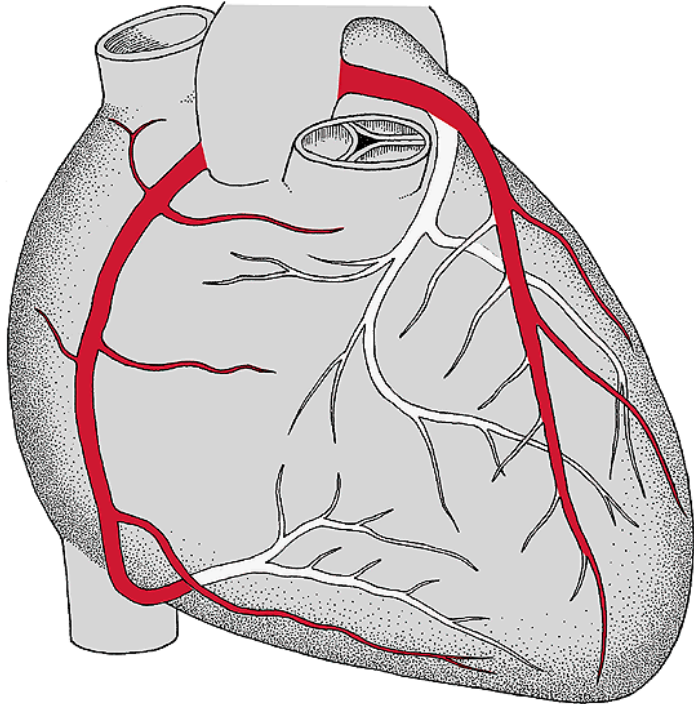
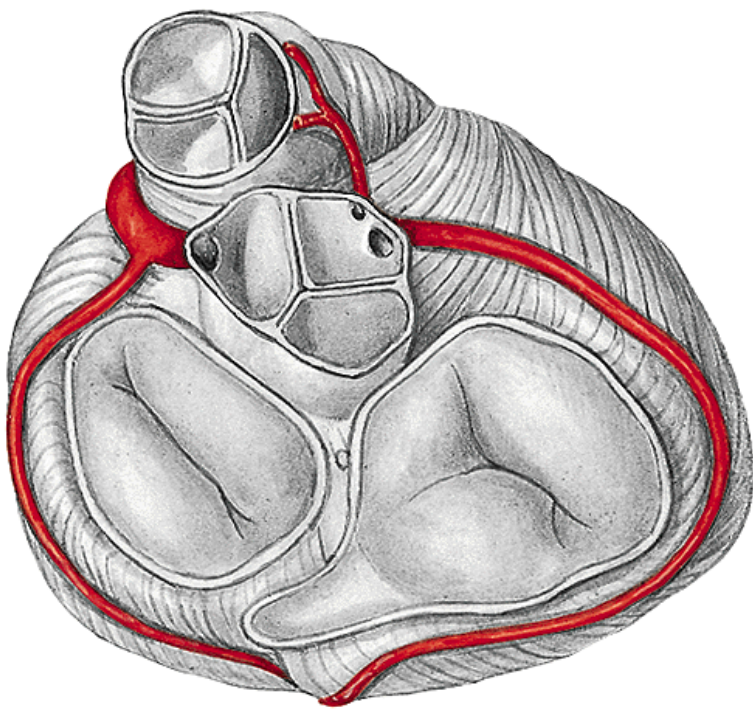


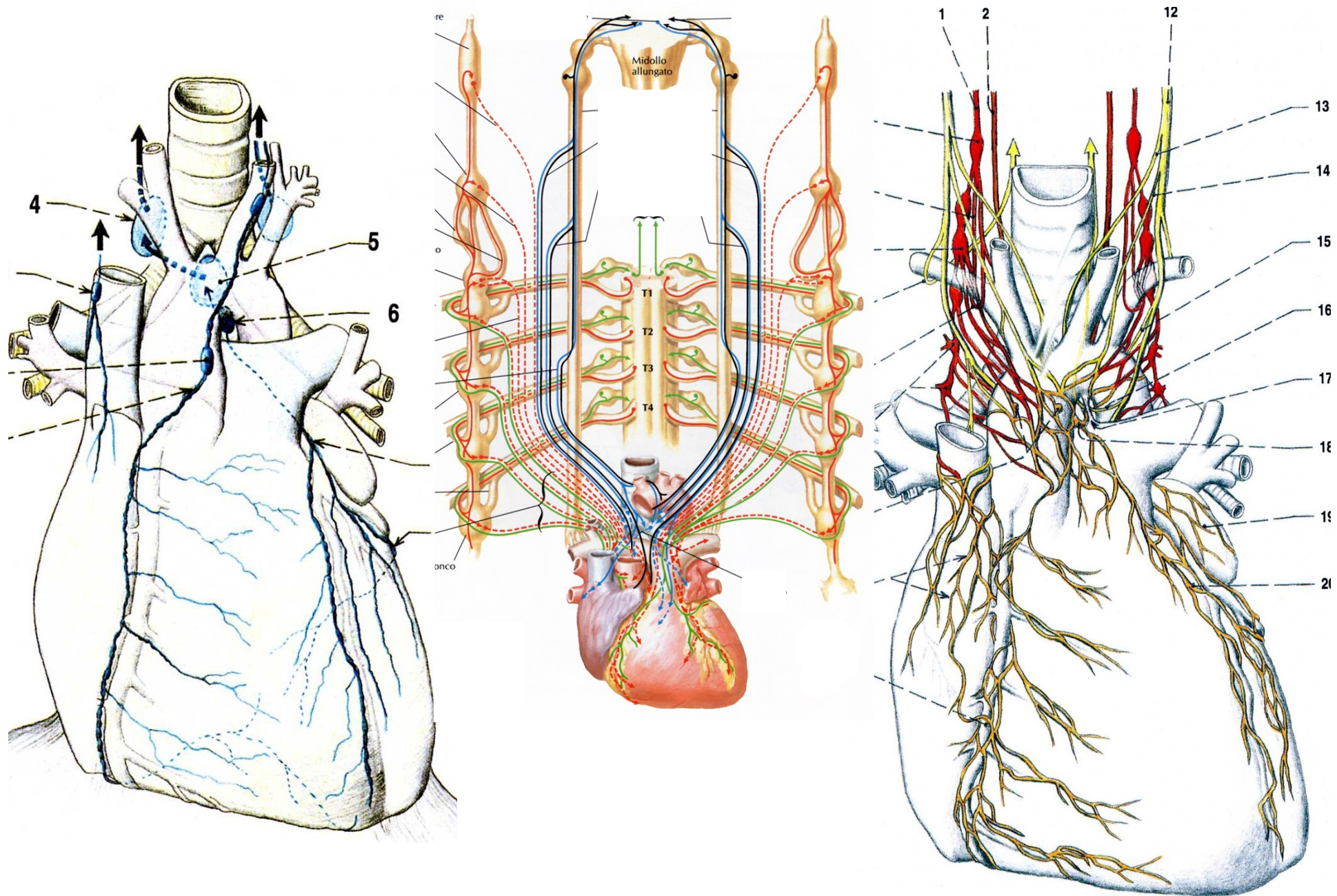
Q Conducting system of the heart (*complexus stimulans cordis*)



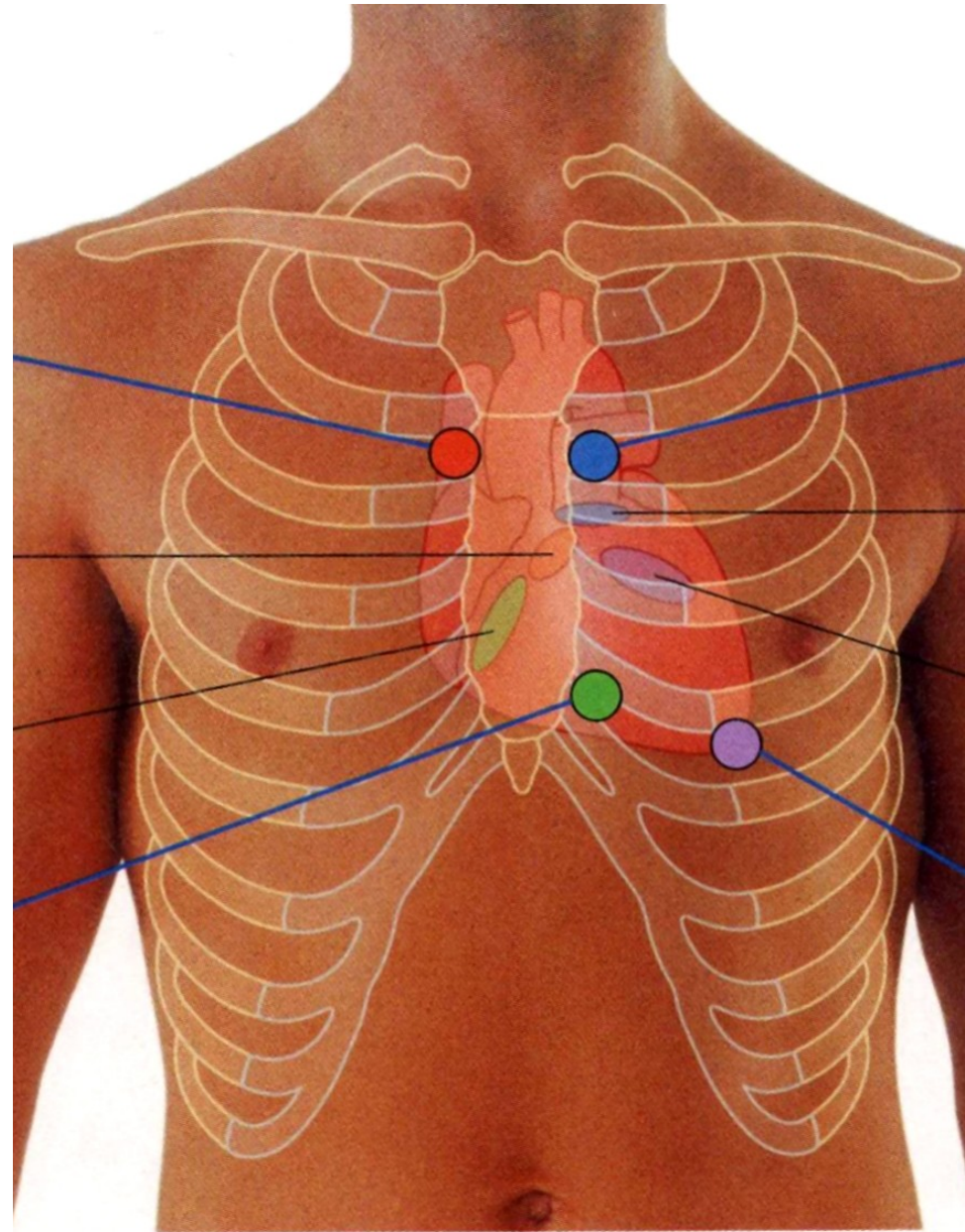
Cross section of the heart

Q Coronary arteries (*arteriae coronariae*)
Cardiac veins (*venae cardiacae*)

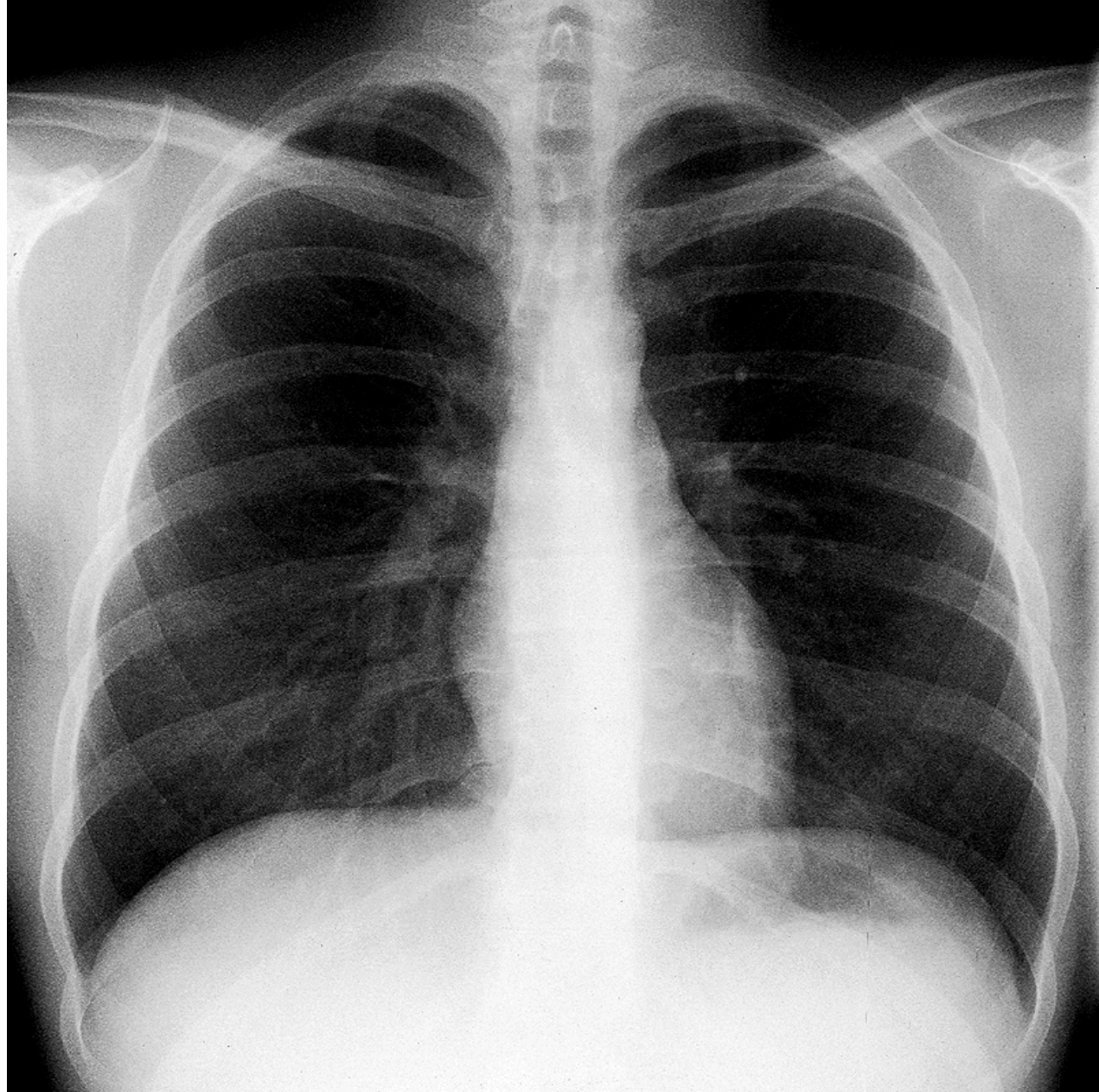
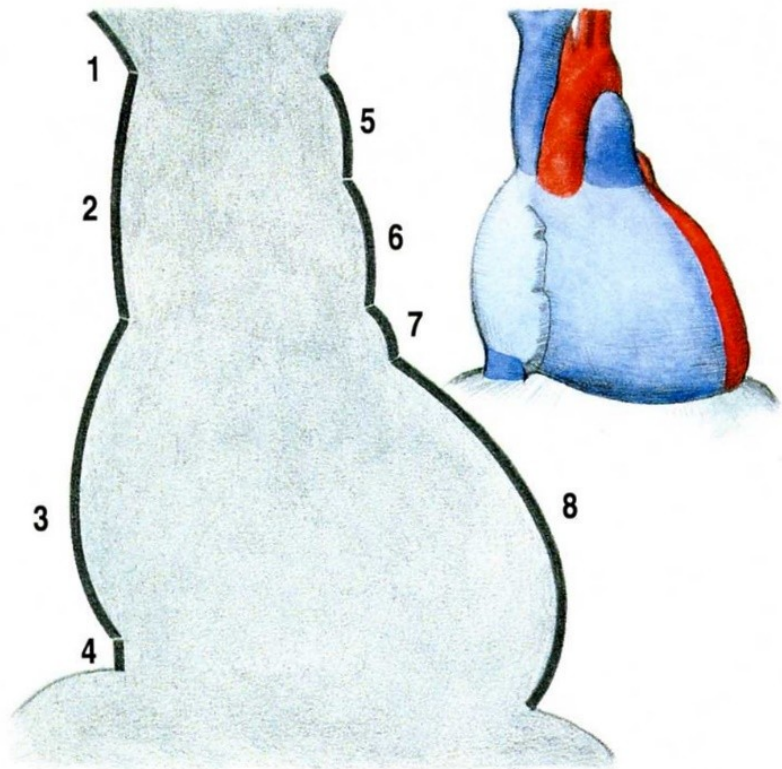




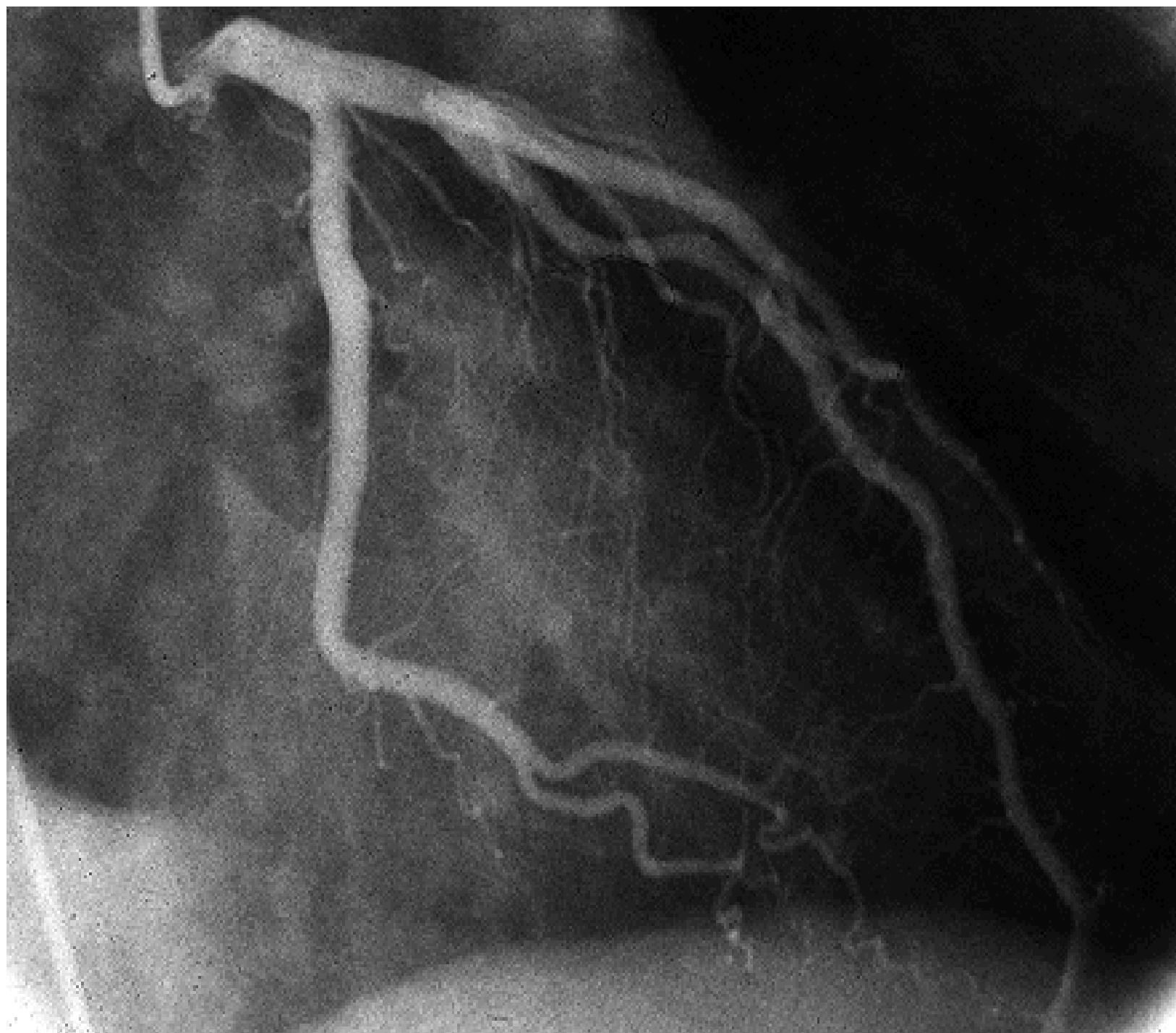
Q Innervation of the heart

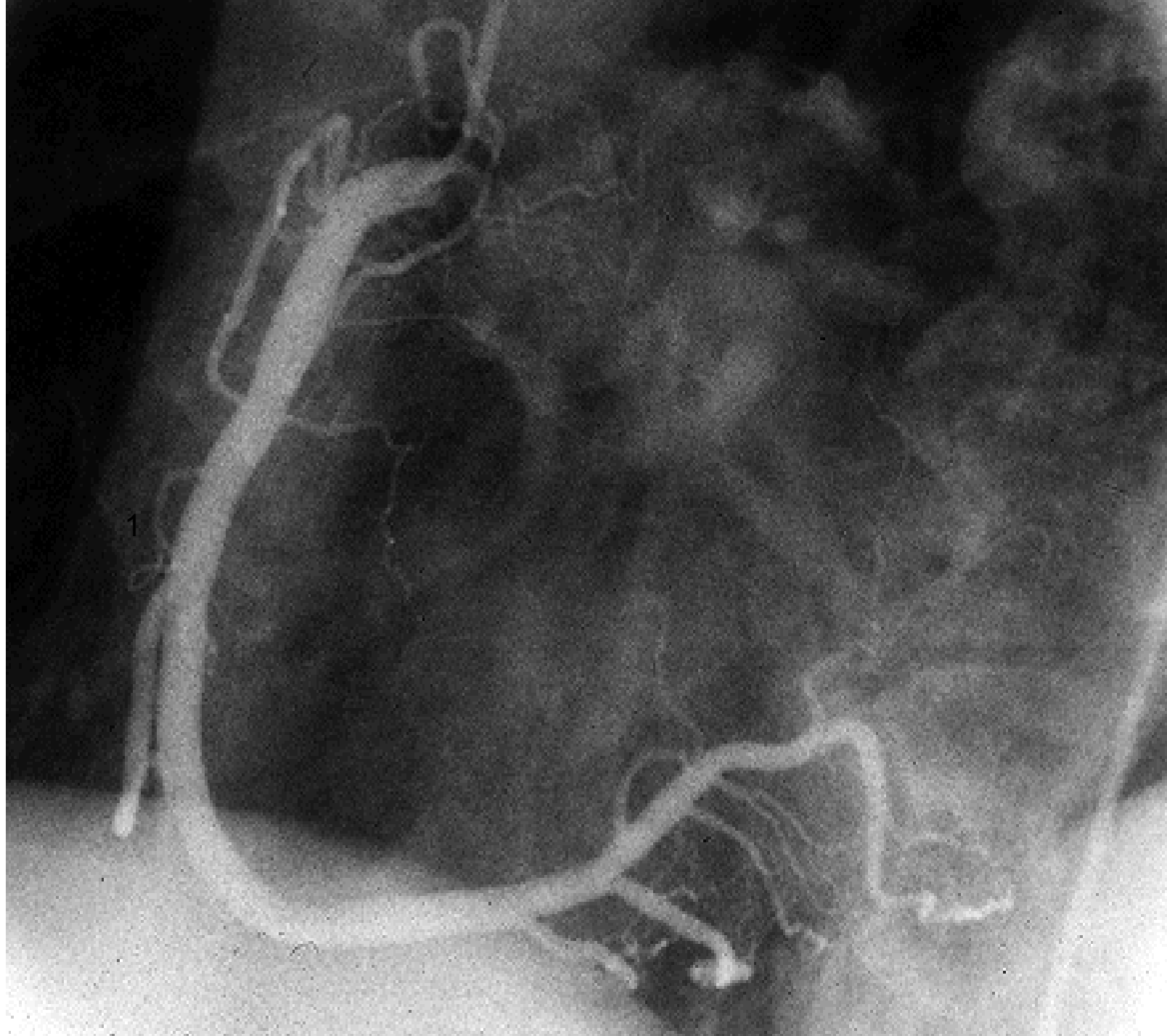


Auscultatory areas

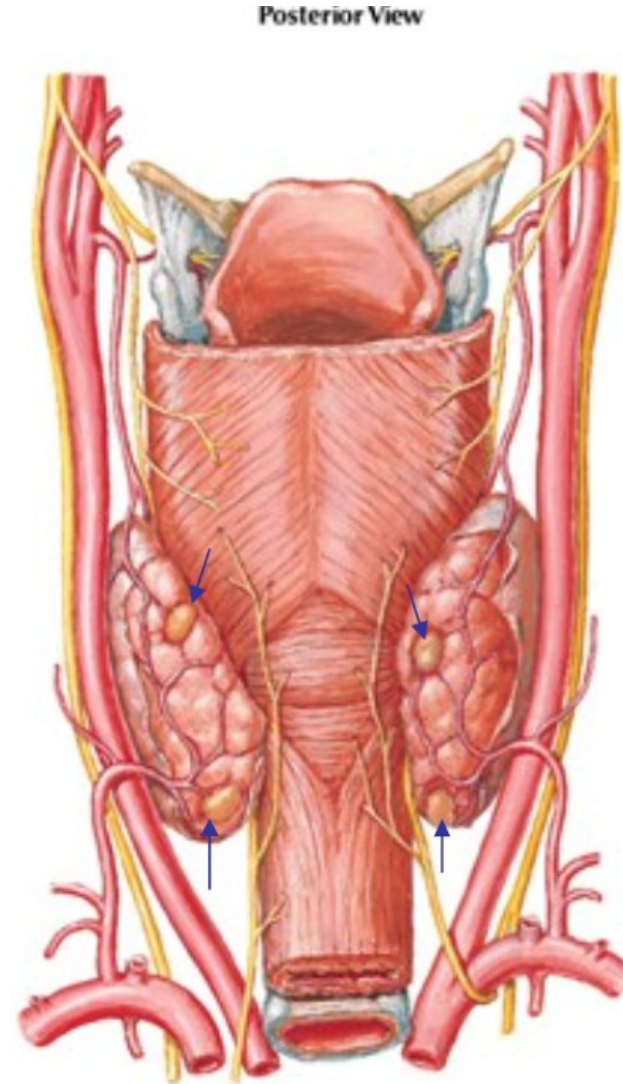
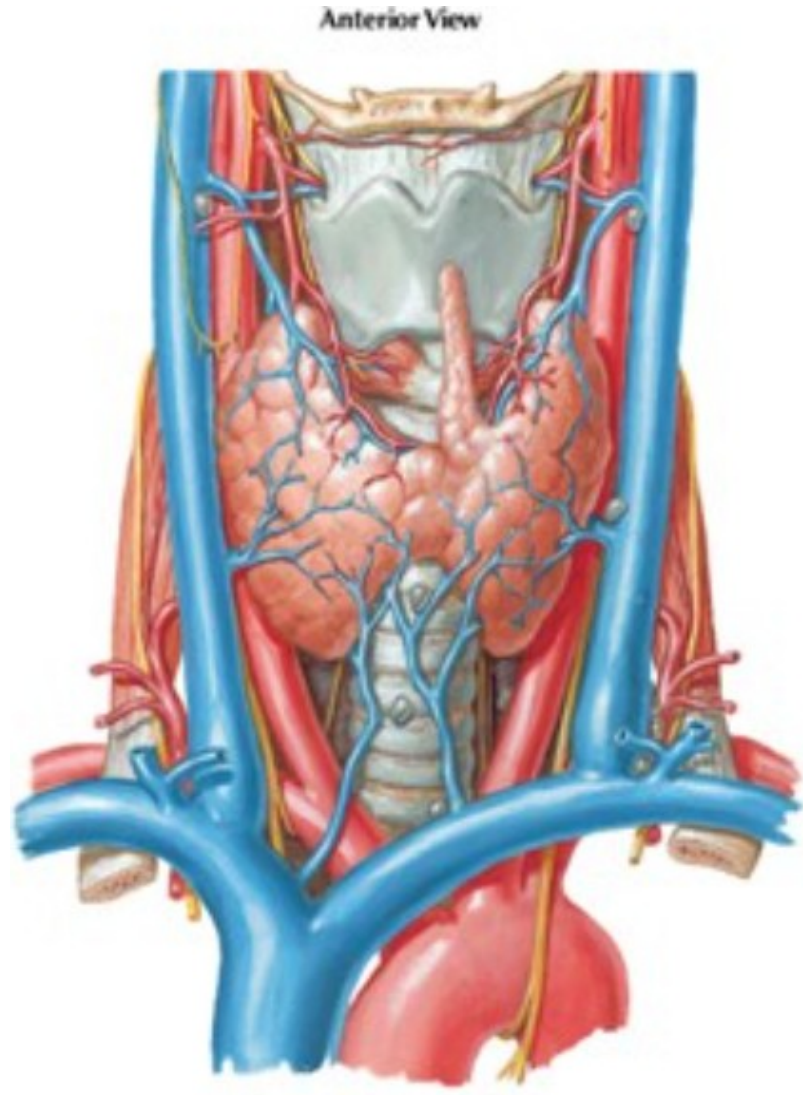


X-ray picture: posteroanterior projection





1. Thyroid gland (*glandula thyroidea*): syntopy, blood supply
2. Parathyroid glands (*glandulae parathyroideae*): syntopy, blood supply



Q

1. Nasal cavity (*cavitas nasi ossea*) – lateral wall
2. Nasal cavity (*cavitas nasi ossea*) – bony nasal septum (*septum nasi osseum*), roof and floor
3. Nasal cavity (*cavitas nasi ossea*) – nasal meatus (*meatus nasi*)