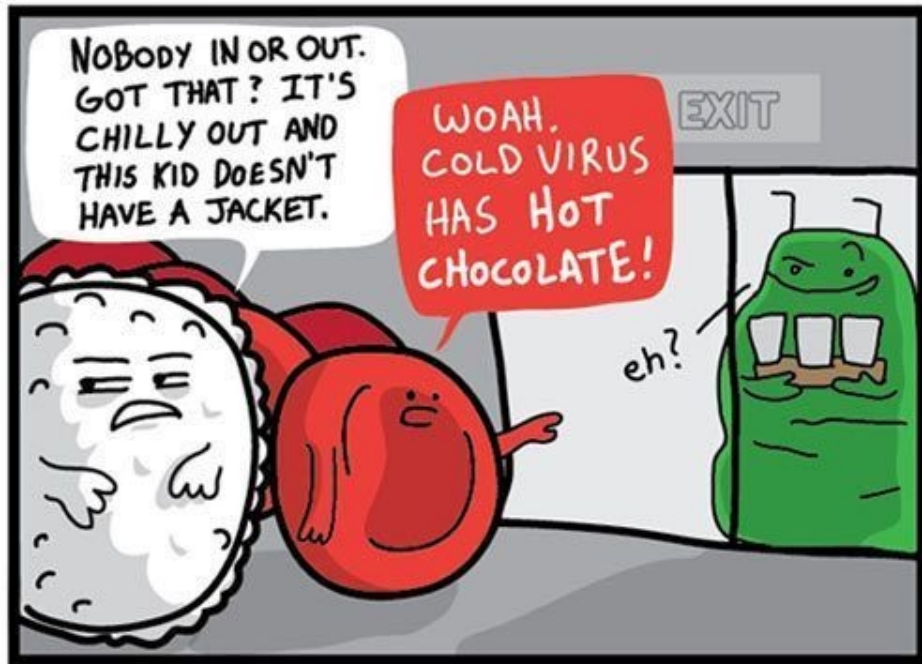


WHITE BLOOD CELL VS. THE COMMON COLD

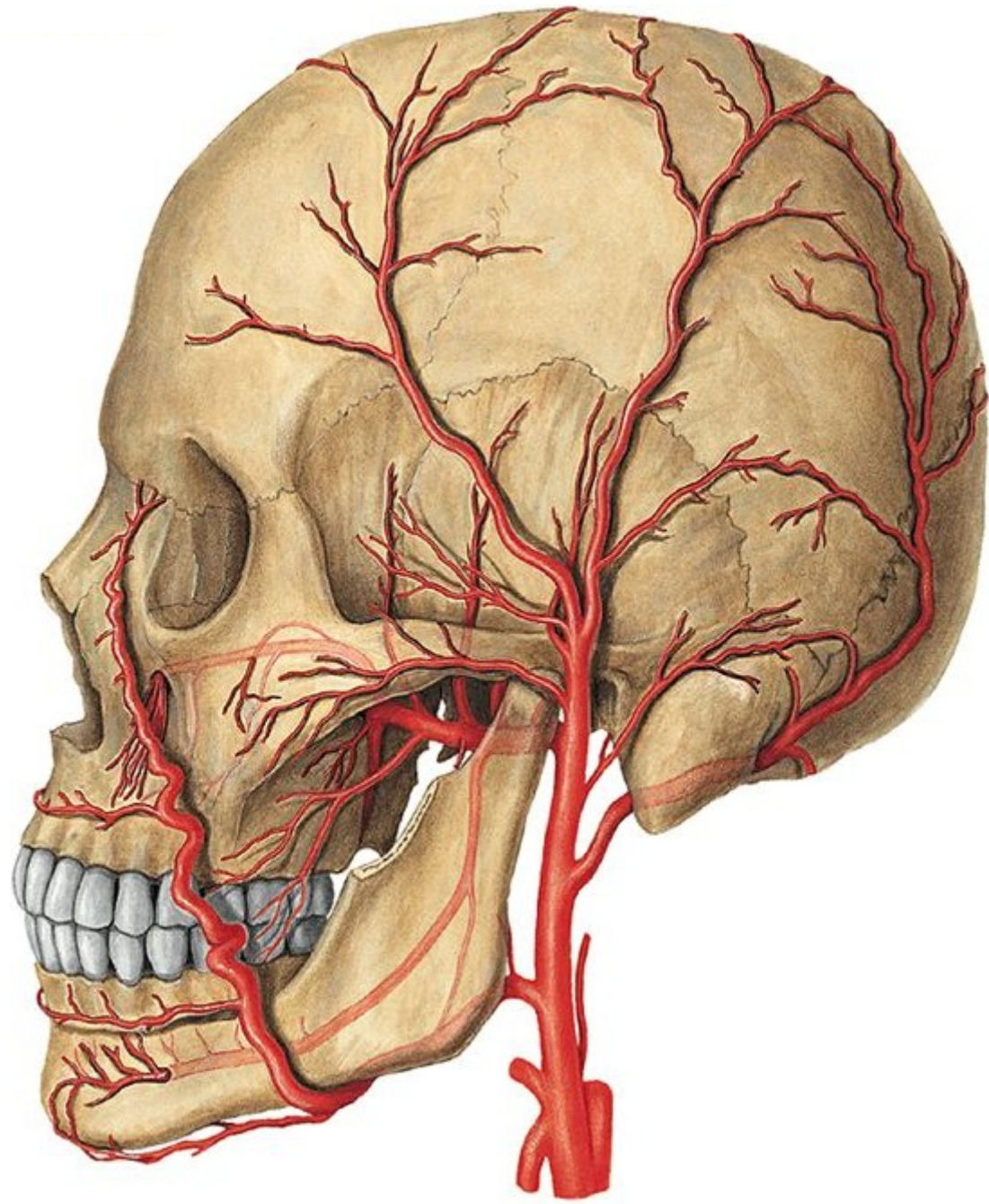
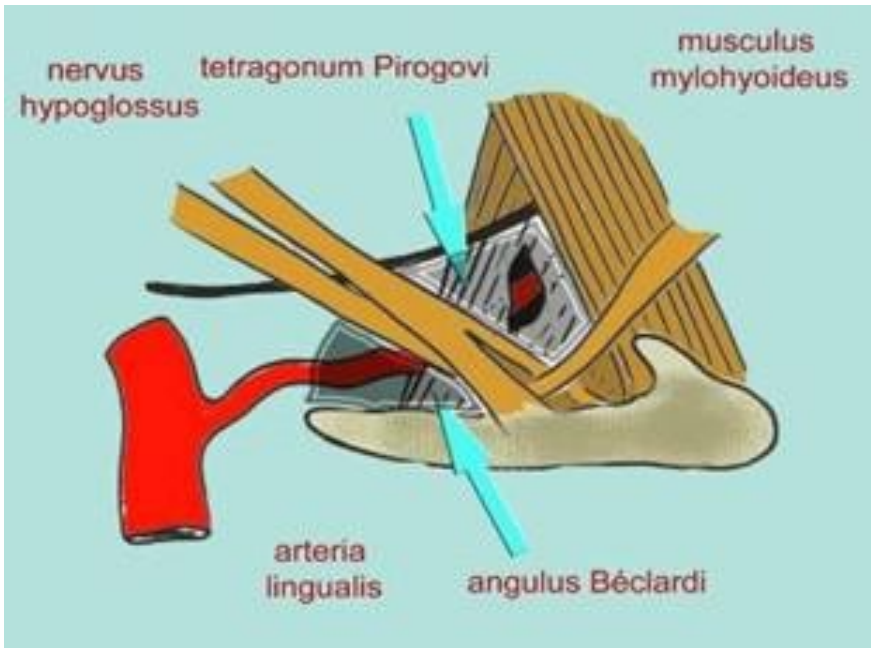


Arteries, veins, lymph

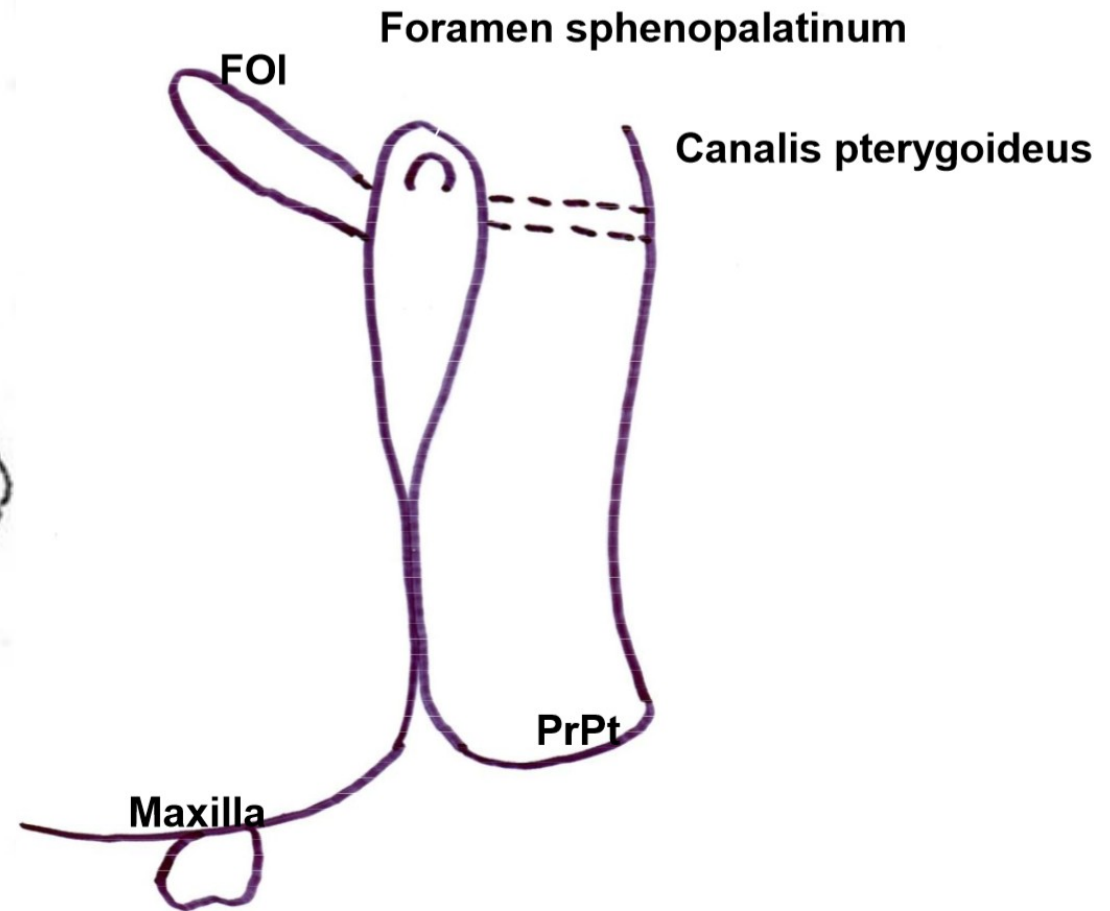
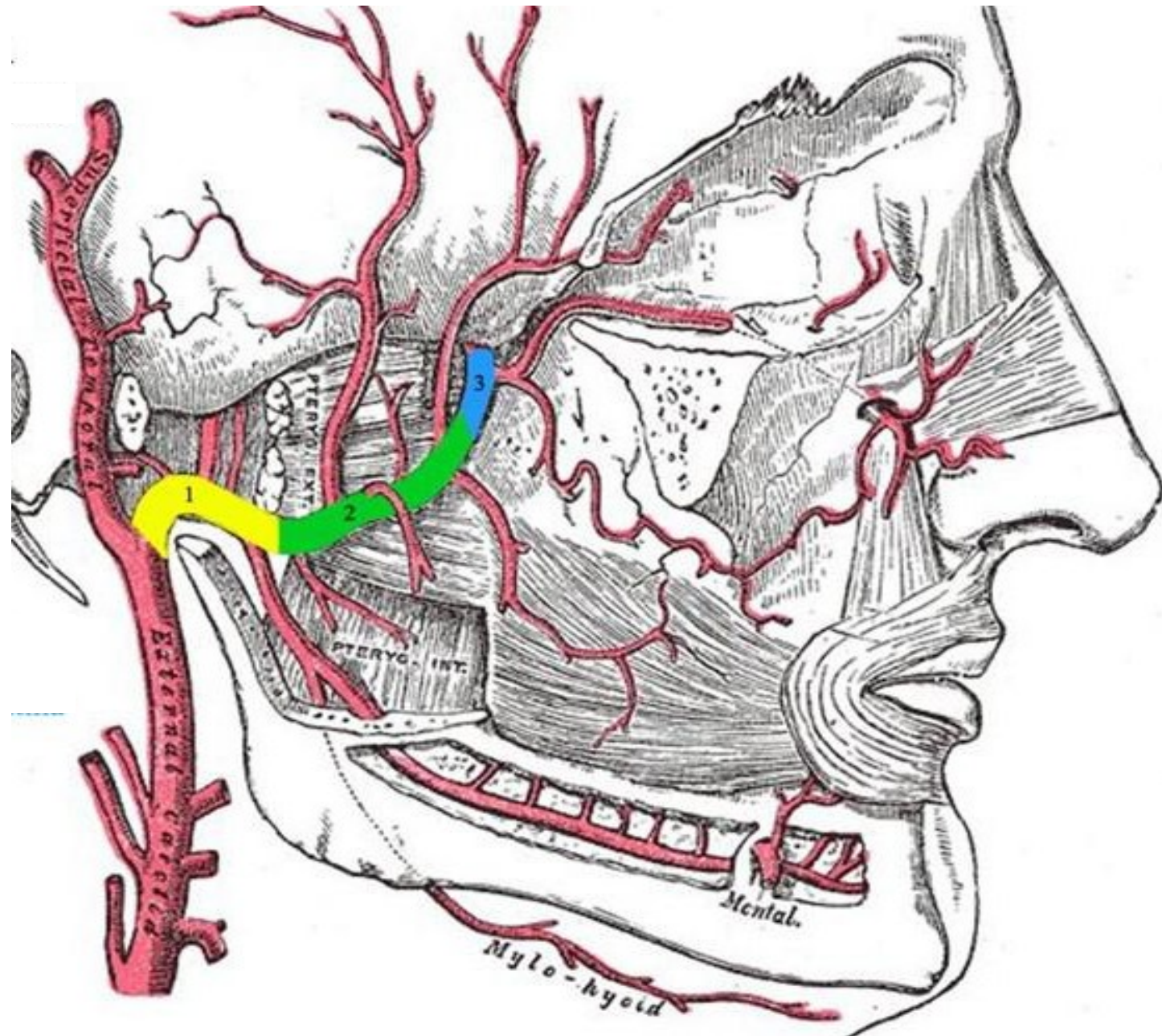
3. seminar

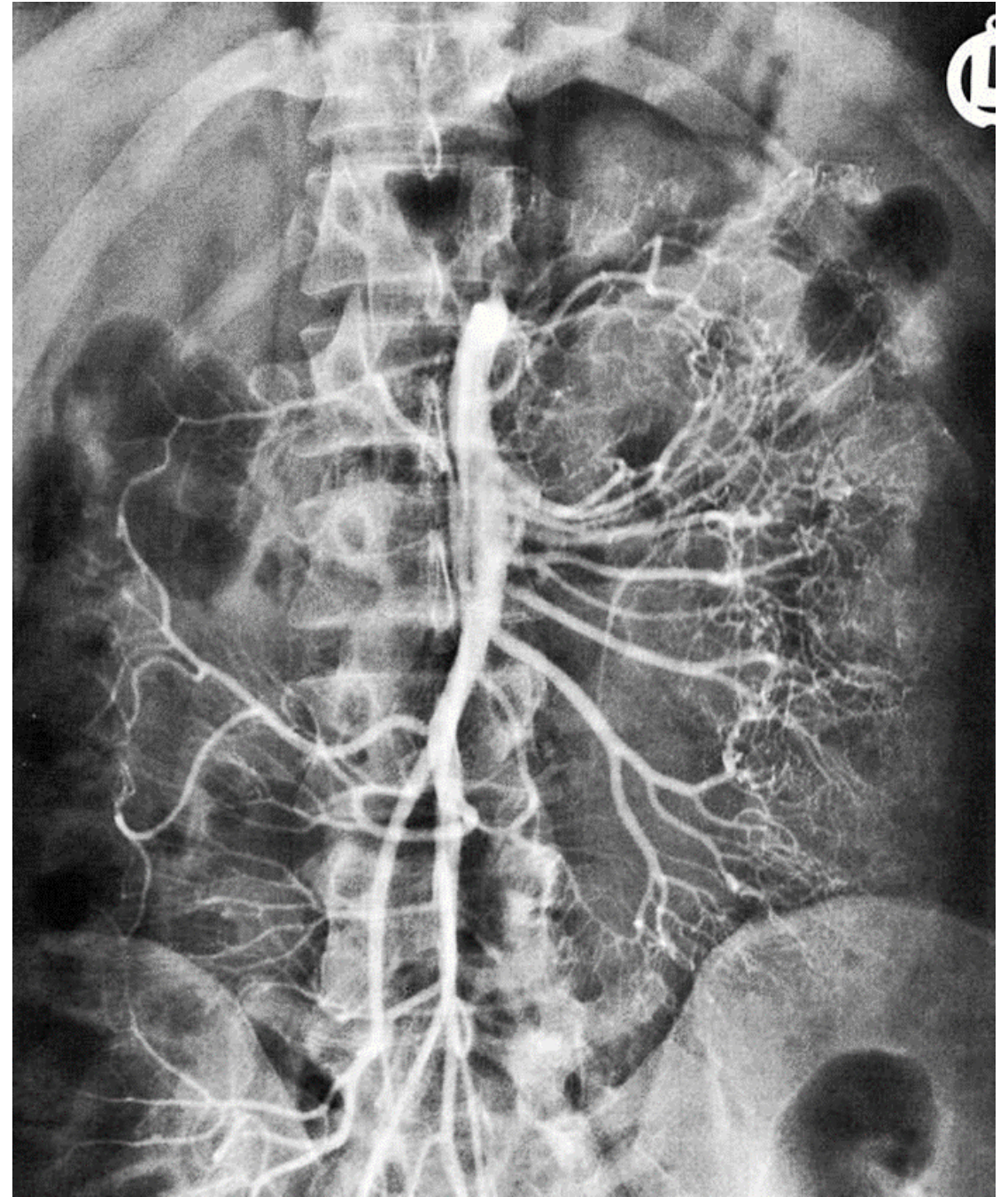
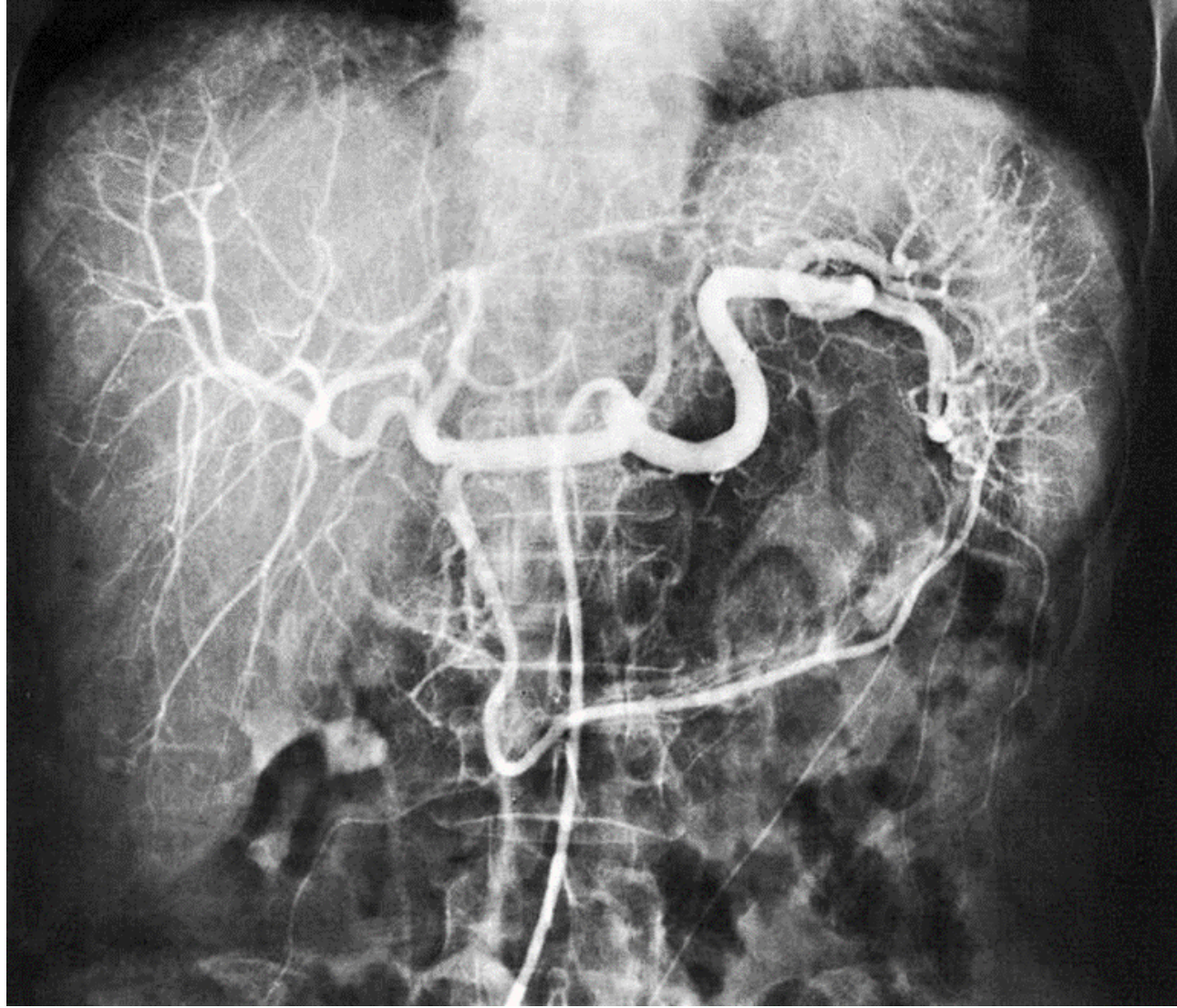


1. Aorta, parts and course
2. Aortic arch (*arcus aortae*): course and primary branches
3. Thoracic aorta (*aorta thoracica*): course and primary branches
4. External carotid artery (*arteria carotis externa*): ventral branches
5. External carotid artery (*arteria carotis externa*): terminal branches
6. External carotid artery (*arteria carotis externa*): medial and dorsal branches
7. Internal carotid artery (*arteria carotis interna*)
8. Subclavian artery (*arteria subclavia*): course and primary branches
9. Vertebral artery (*arteria vertebralis*)
10. Internal thoracic artery (*arteria thoracica interna*)
11. Axillary artery (*arteria axillaris*): course and primary branches
12. Brachial artery (*arteria brachialis*): course and primary branches
13. Main arteries of the forearm and hand (*arteriae antebrachii et manus*): courses and targets
14. Abdominal aorta (*aorta abdominalis*): course and primary branches
15. Coeliac trunk (*truncus coeliacus*): main branches, their courses and targets
16. Superior mesenteric artery (*arteria mesenterica superior*): main branches and their targets
17. Inferior mesenteric artery (*arteria mesenterica inferior*): main branches and their targets
18. Common and internal iliac arteries (*arteria iliaca communis, arteria iliaca interna*): courses, main branches and targets
19. External iliac and femoral arteries (*arteria iliaca externa, arteria femoralis*): courses, main branches and targets
20. Popliteal artery, anterior and posterior tibial arteries (*arteria poplitea, arteria tibialis anterior et posterior*): courses and targets
21. Main arteries of the foot (*arteriae pedis*): courses and targets

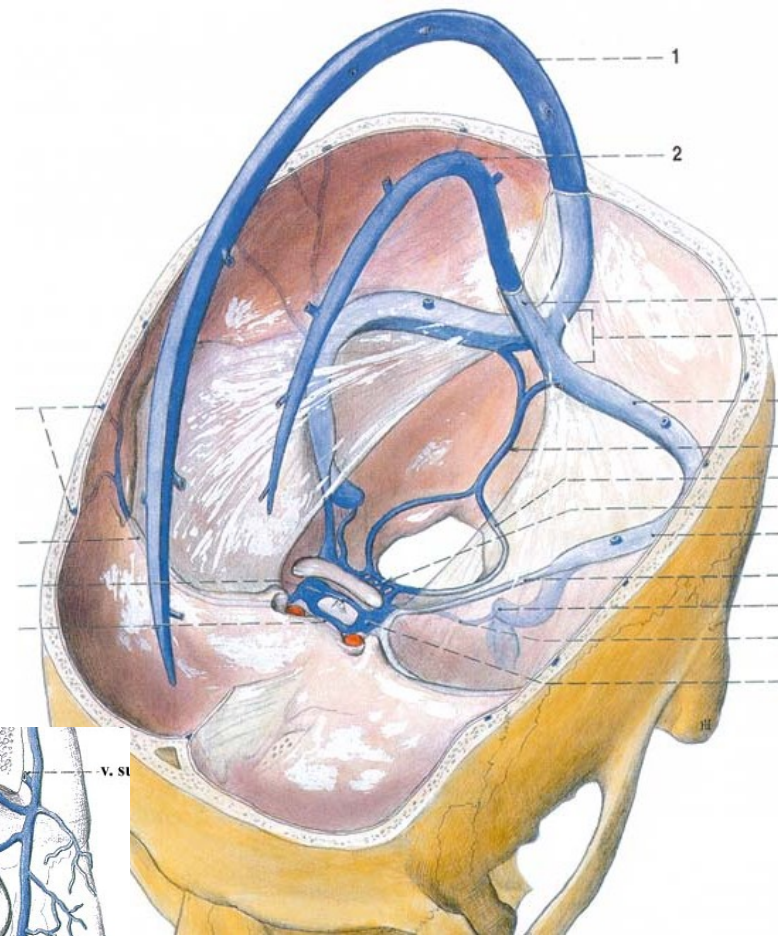
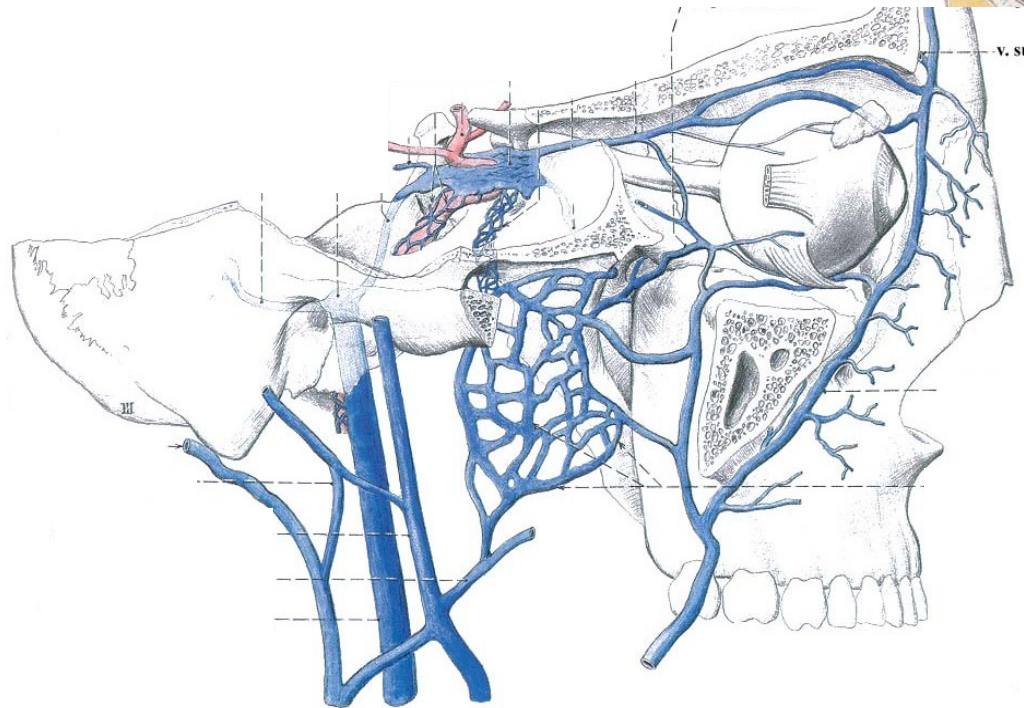
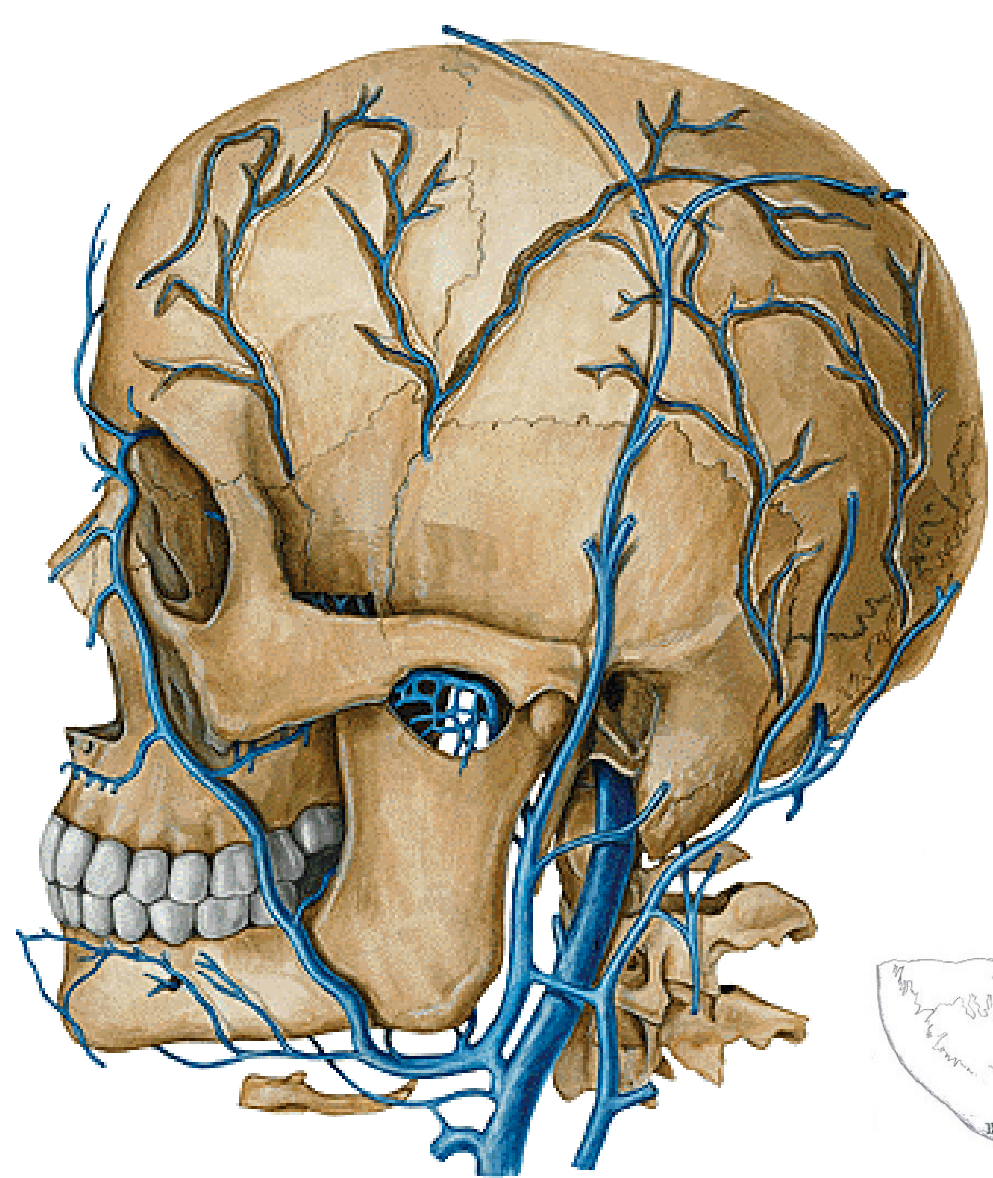


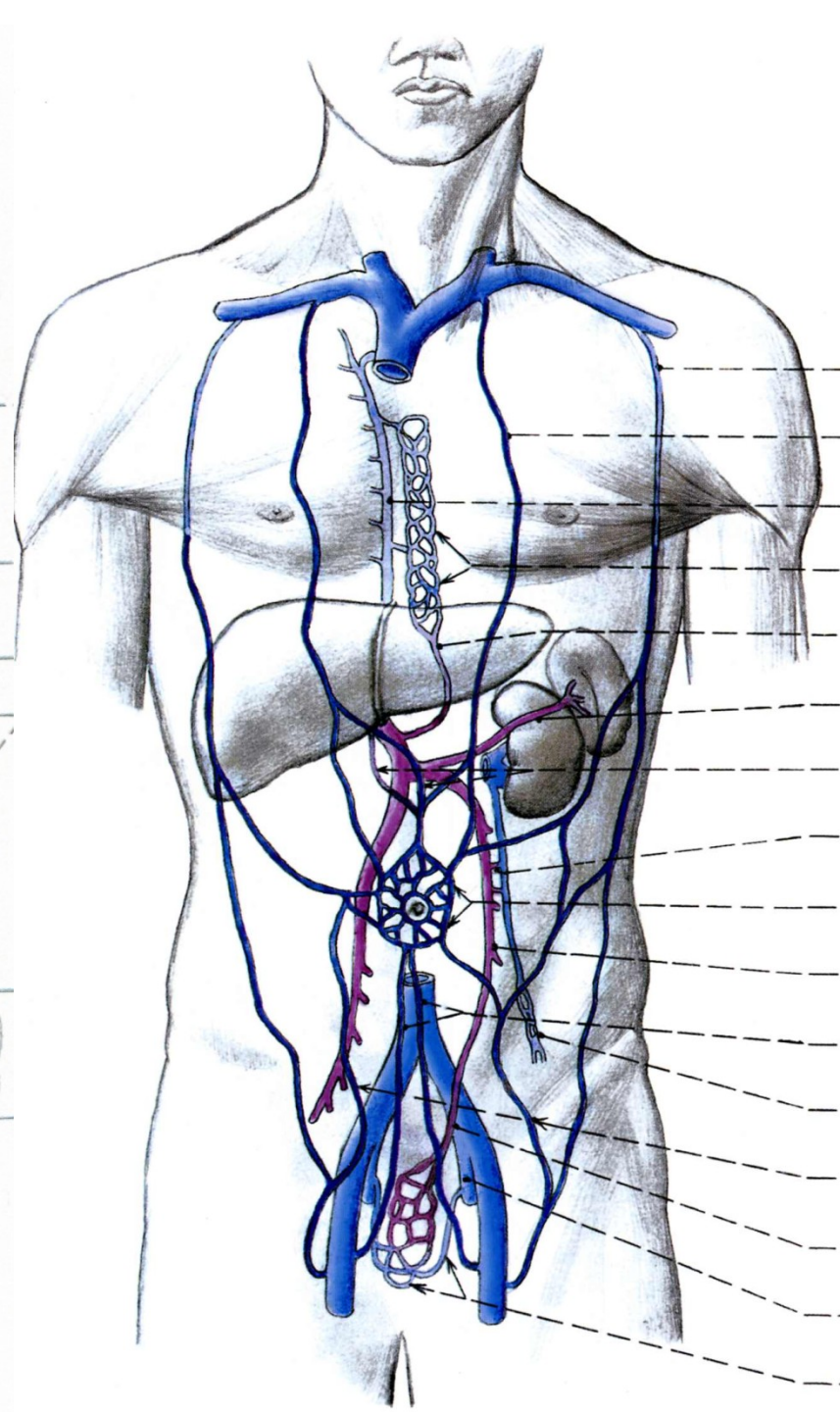
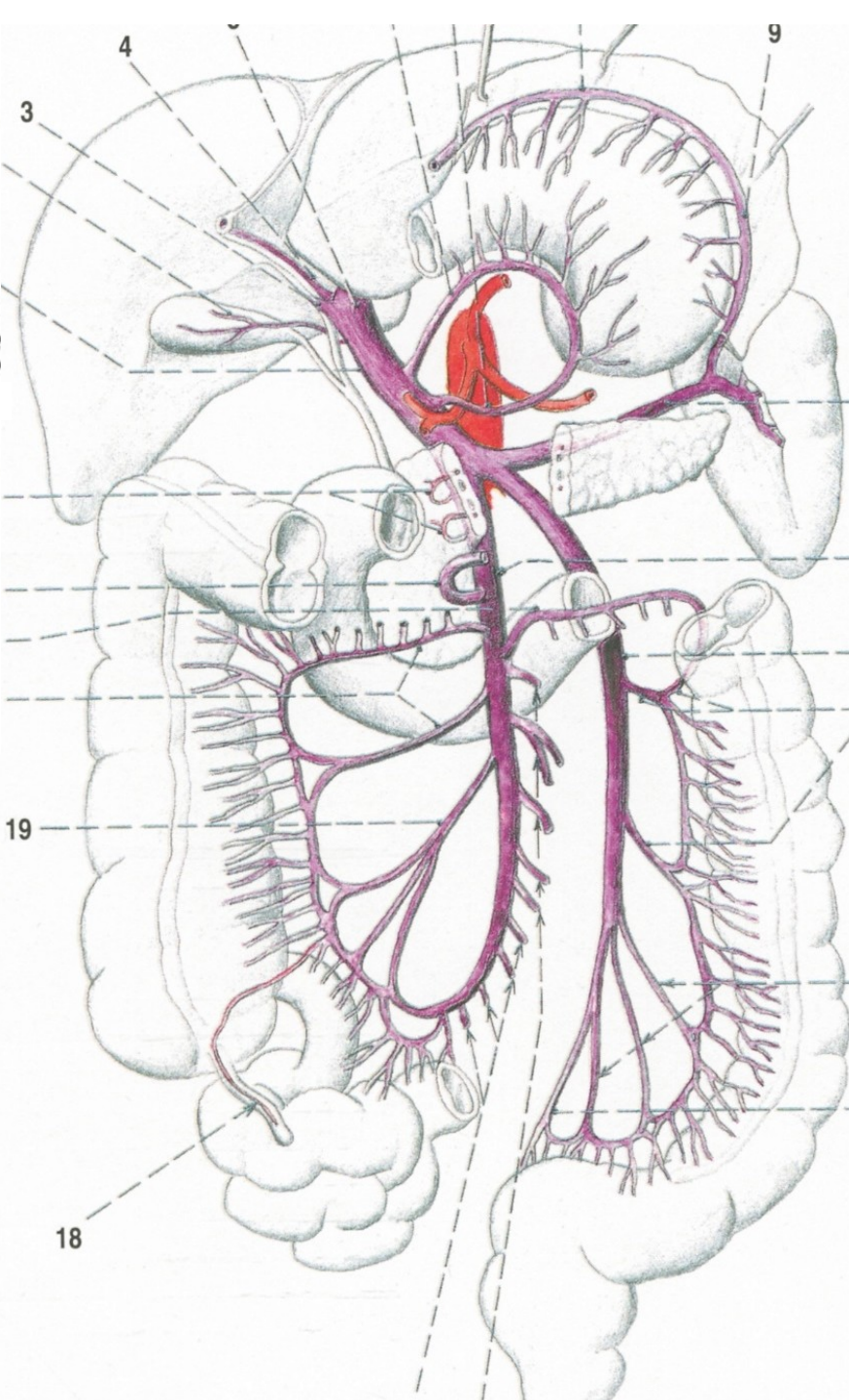
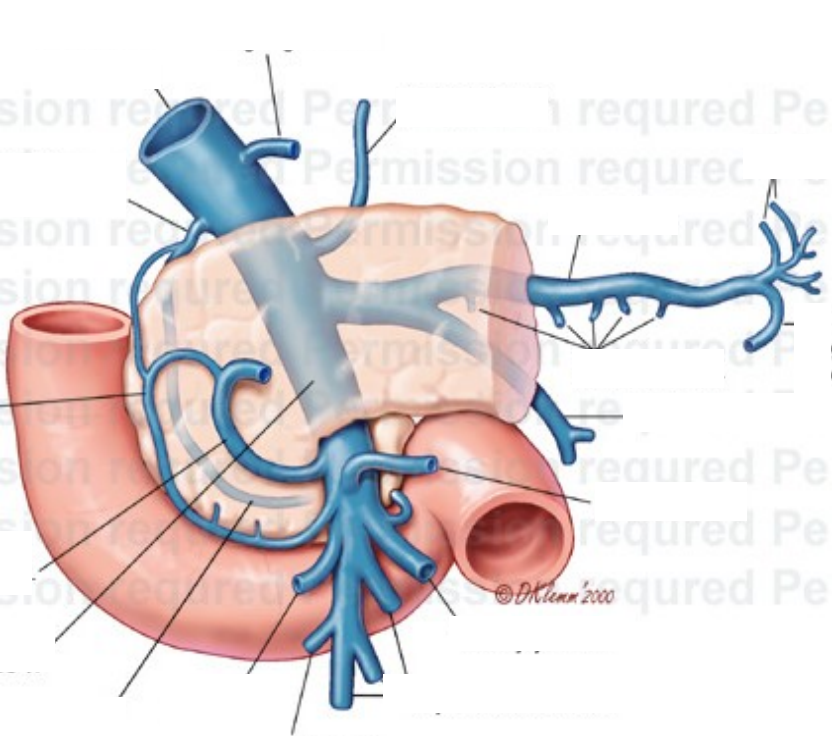
Fossa pterygopalatina

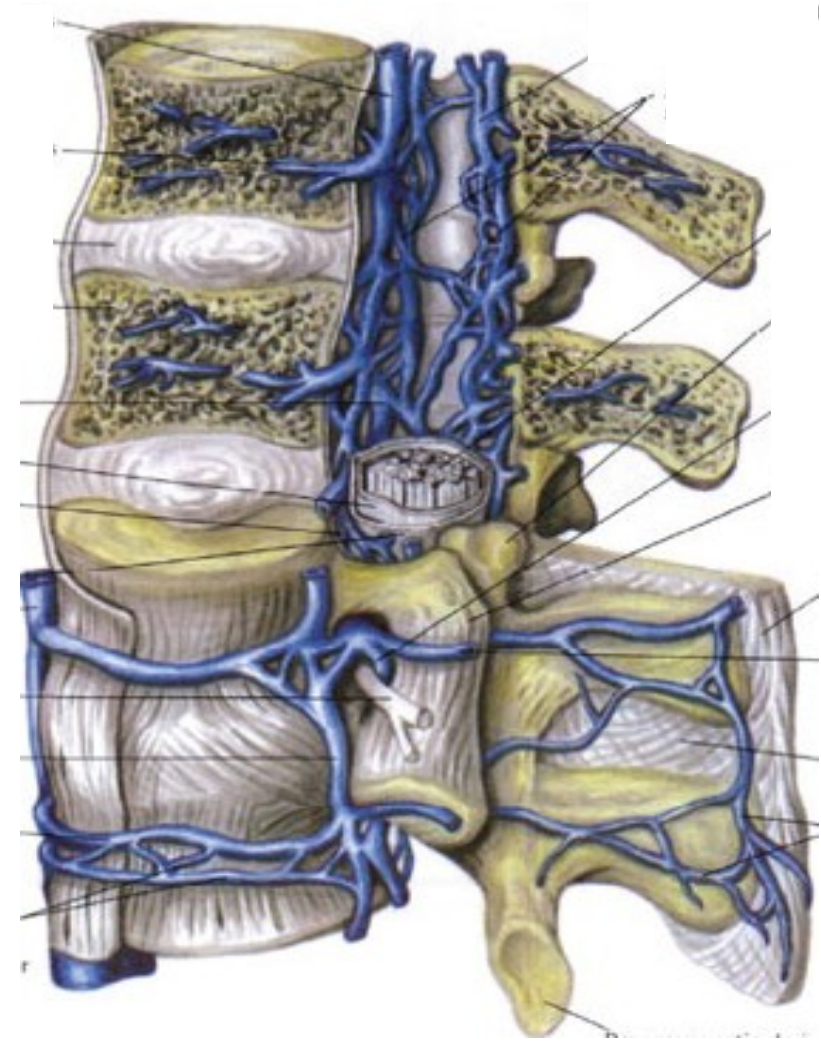
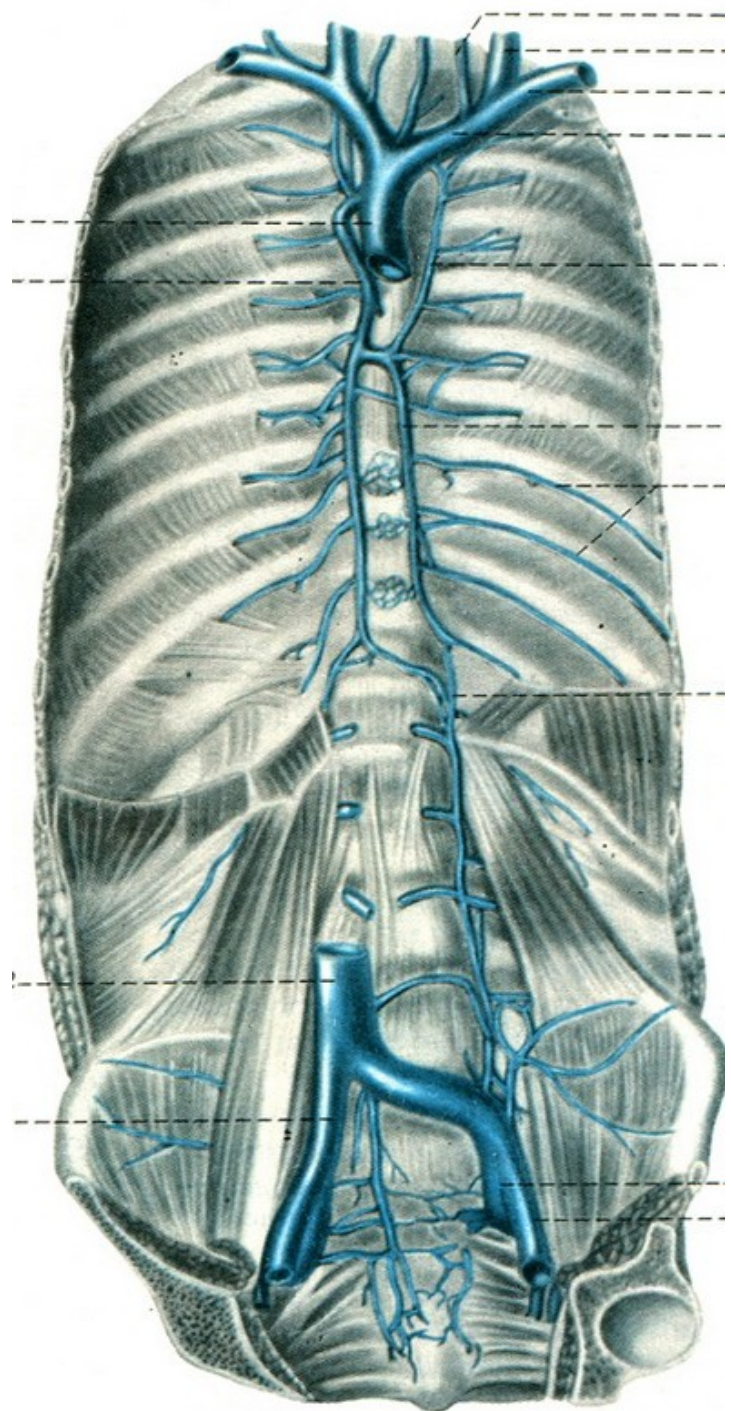


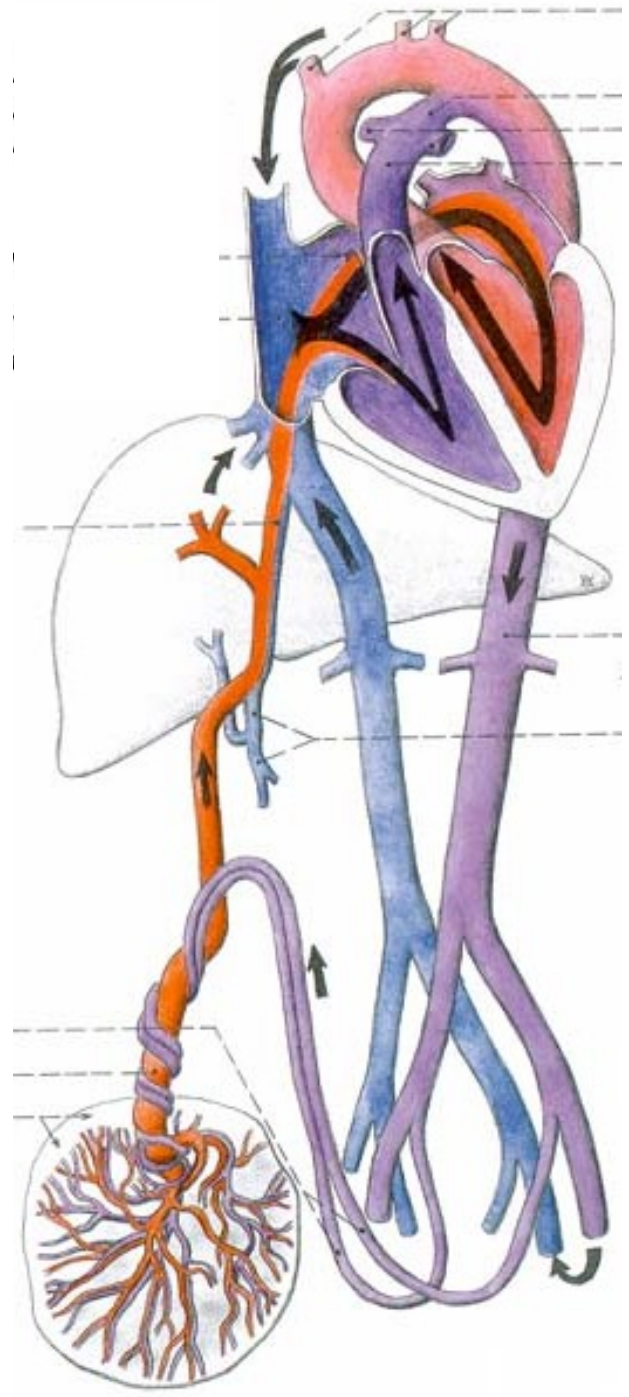


1. Superior vena cava (*vena cava superior*): course and tributaries
2. Internal jugular vein (*vena jugularis interna*): course and main tributaries
3. Veins of the brain (*venae cerebri*)
4. Dural venous sinuses (*sinus durae matris*)
5. Subclavian vein (*vena subclavia*): course and main tributaries
6. Deep veins of the upper extremity (*venae profundae membri superioris*): courses and main tributaries
7. Superficial veins of the upper extremity (*venae superficiales membri superioris*): courses and main tributaries
8. Inferior vena cava (*vena cava inferior*): course and main tributaries
9. Deep veins of the lower extremity (*venae profundae membri superioris*): courses and main tributaries
10. Superficial veins of the lower extremity (*venae superficiales membri superioris*): courses and main tributaries
11. Fetal circulation
12. Spleen (*lien*): structure, blood supply, syntopy
13. Hepatic portal vein (*vena portae hepatis*), portal circulation and its function
14. Cavocaval anastomoses
15. Portocaval anastomoses









1. Structure of the lymphatic system (lymph, lymph capillaries, lymph vessels, lymph nodes, lymphatic trunks and ducts)
2. Thymus, its structure and syntopy
3. Lymph nodes and vessels of the head
4. Lymph nodes and vessels of the neck
5. Lymph nodes and vessels of the upper extremity
6. Lymph nodes and vessels of the thorax
7. Lymph nodes and vessels of the lower extremity
8. Lymph nodes and vessels of the abdomen
9. Lymph nodes and vessels of the pelvis
10. Tonsils, Waldeyer lymphatic circuit

