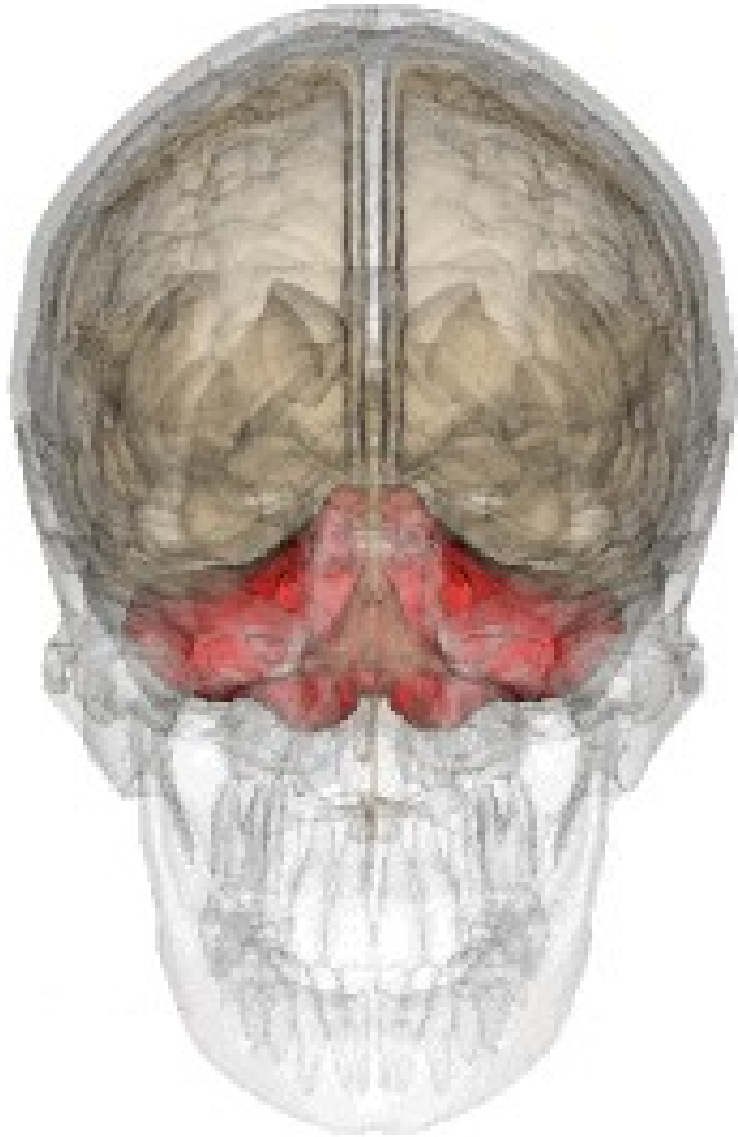
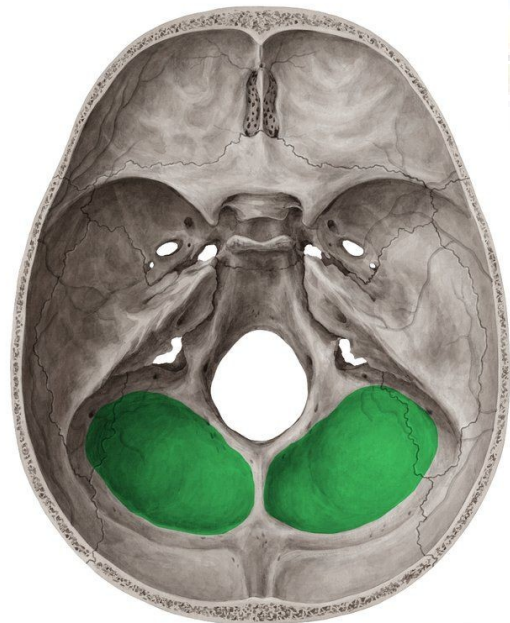
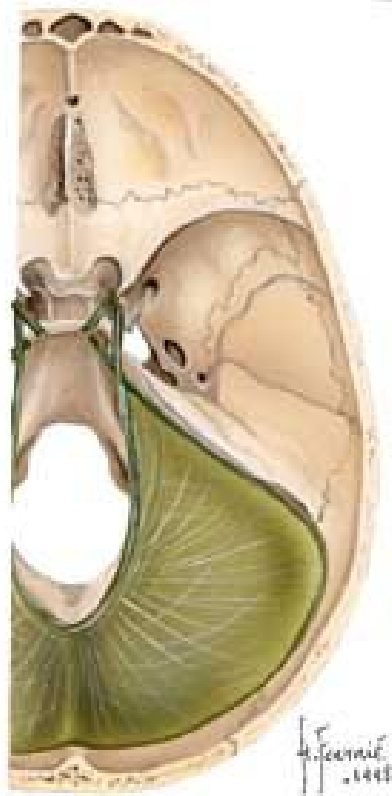
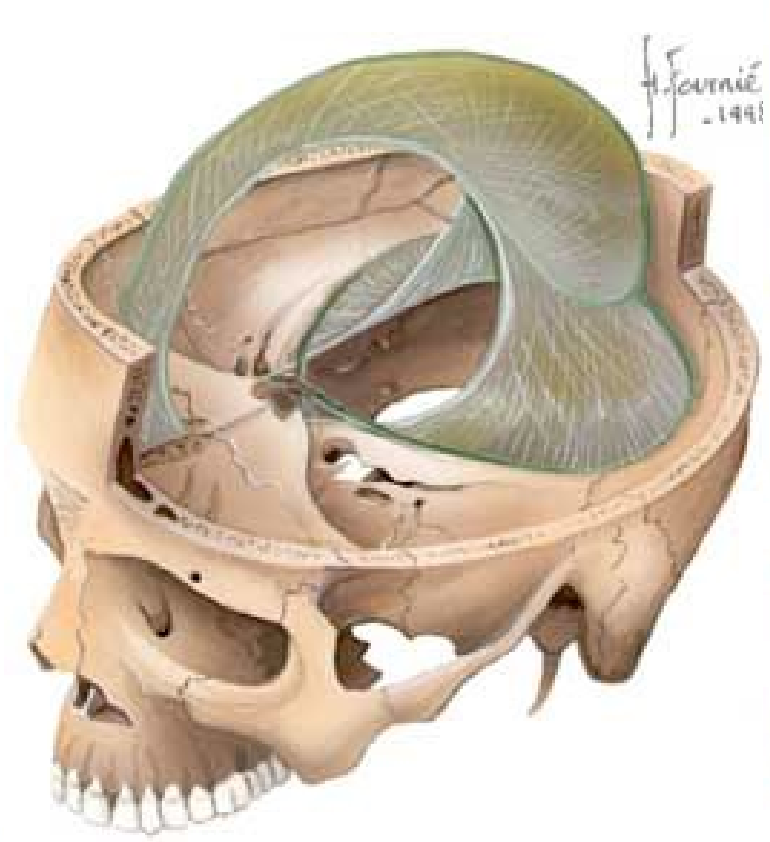
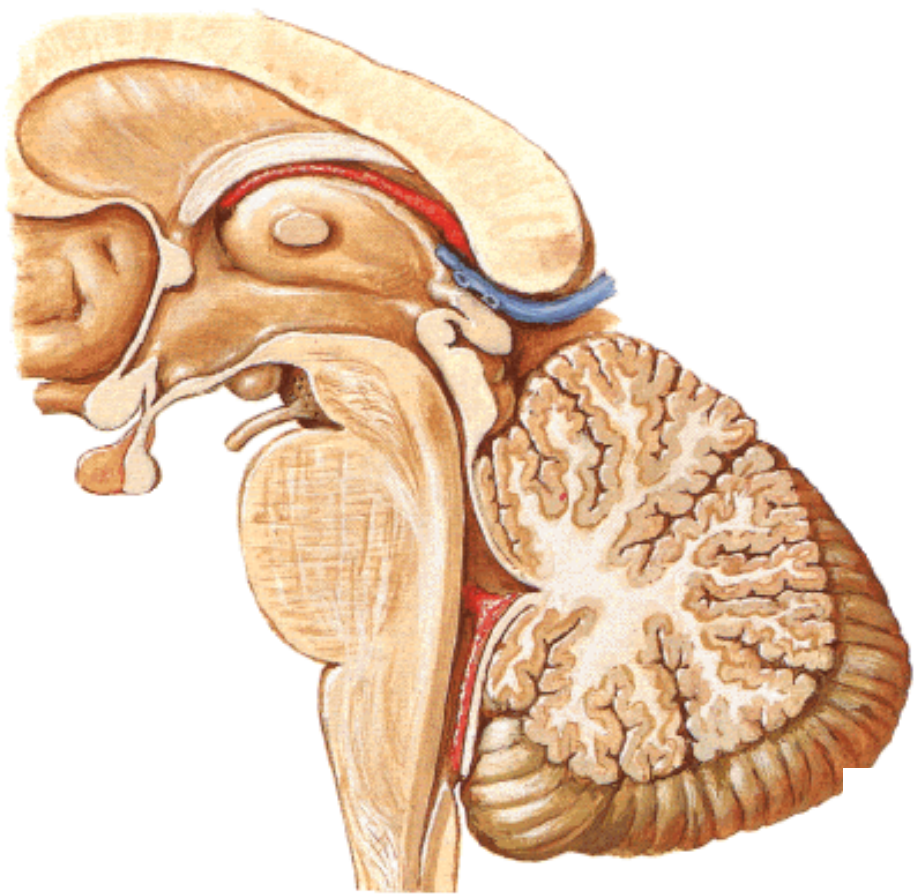


**CEREBELLUM
DIENCEPHALON**

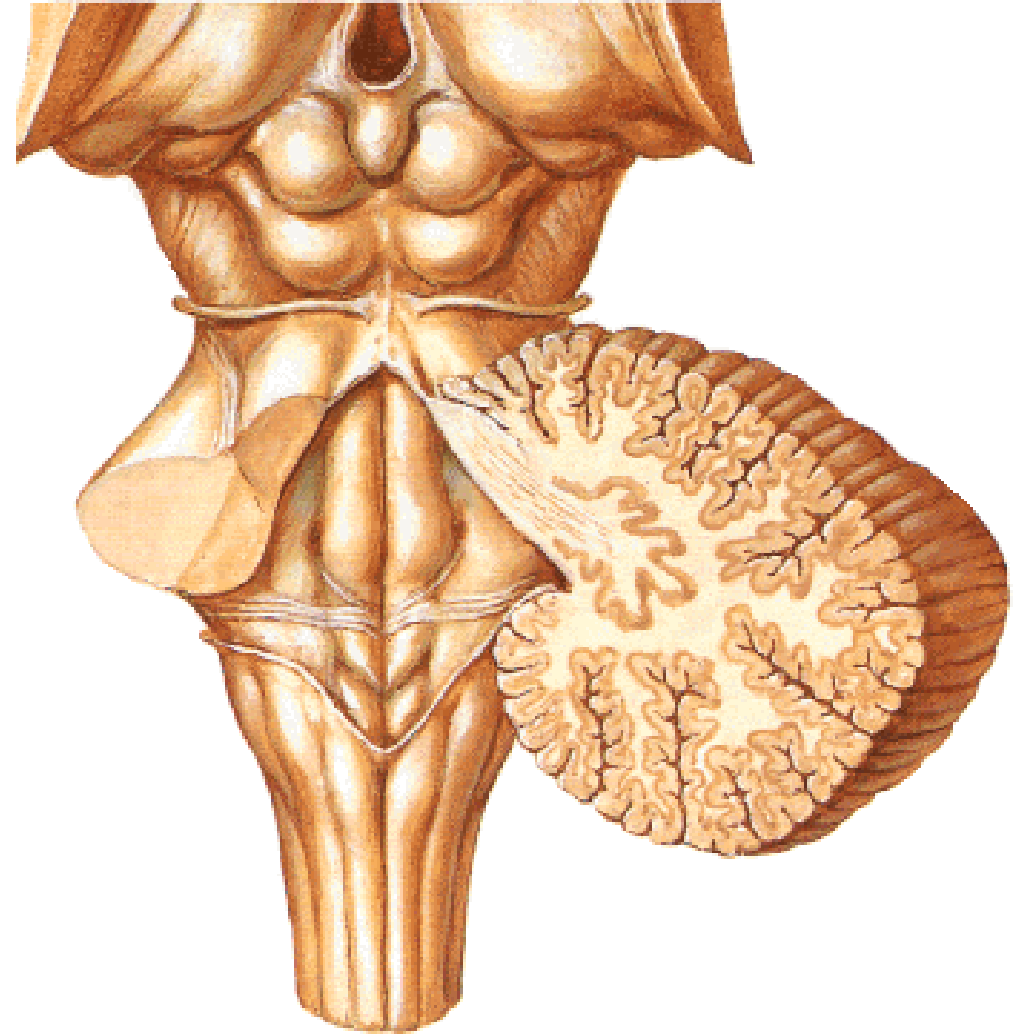
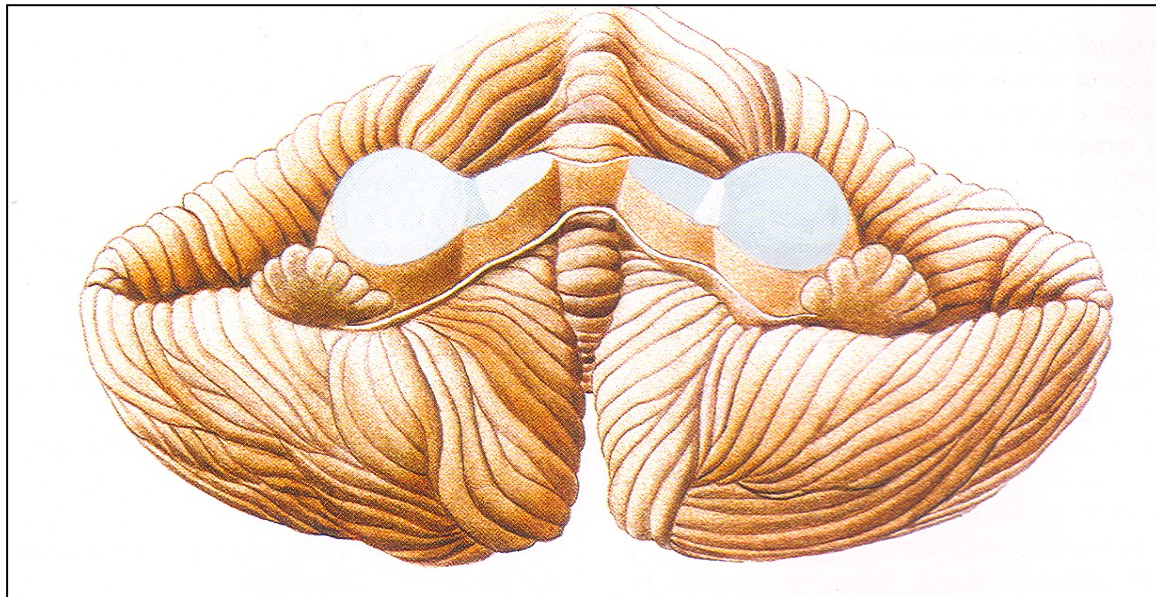
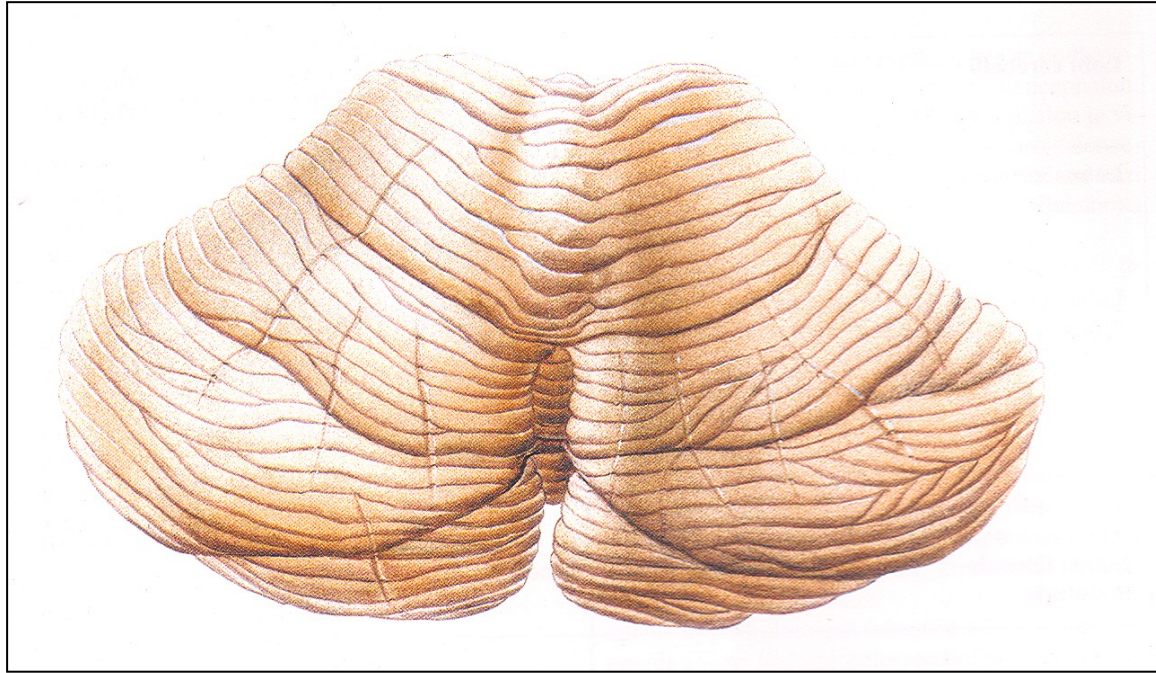
14. Cerebellum: gross anatomy, principles of its organization
15. Cerebellum: main pathways and their functions
16. Diencephalon: gross anatomy
17. Thalamus: main nuclei and their structural-functional classification
18. Hypothalamus: basic classification of nuclei and their functions
19. Neurosecretion in the diencephalon: basic principle, hypothalamo-hypophysial tract (tractus hypothalamohypophysialis)
20. Neurosecretion in the diencephalon: hypophysial portal system

Cerebellum

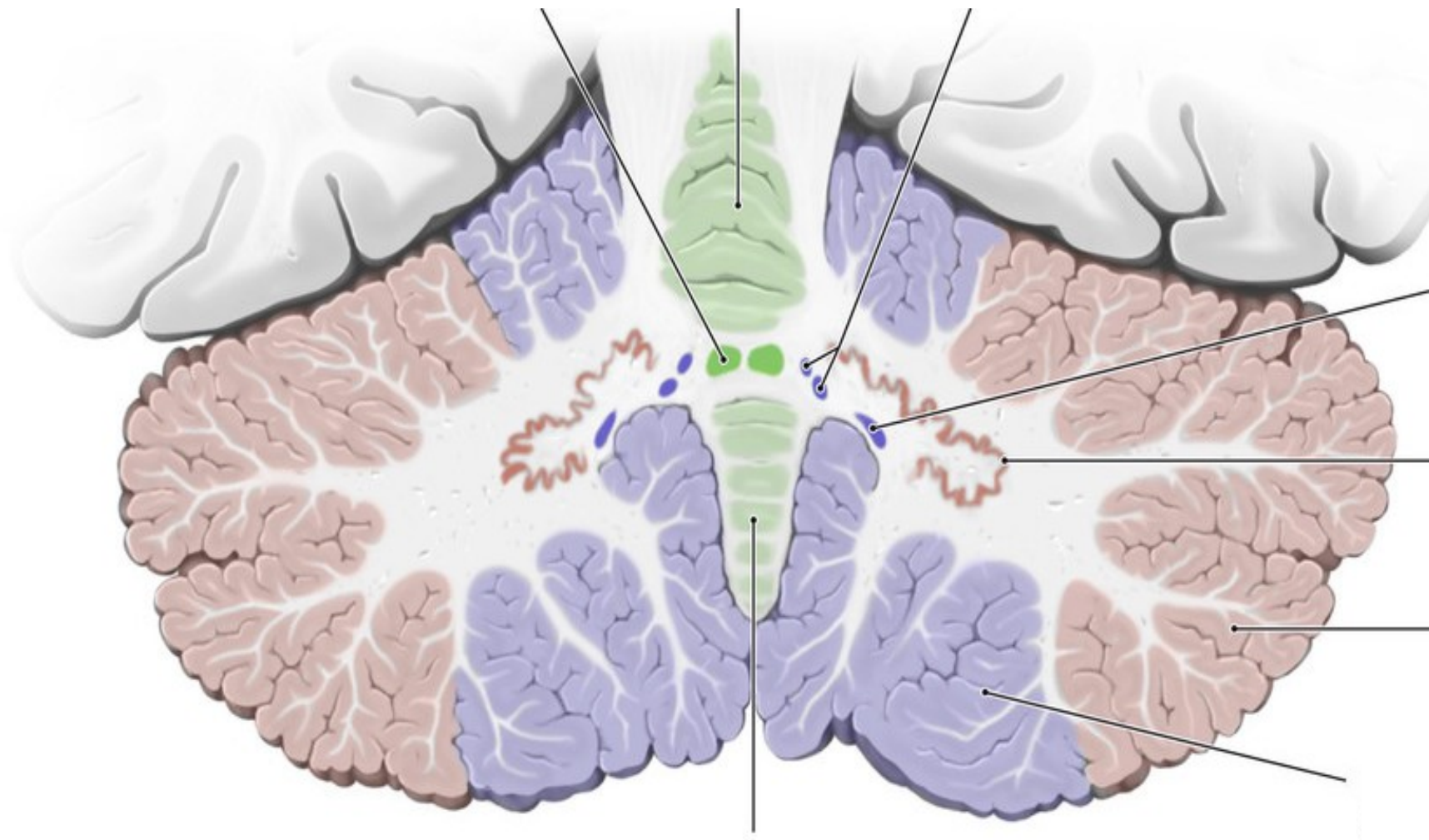




Anatomical divisions:



Inner structure of cerebellum

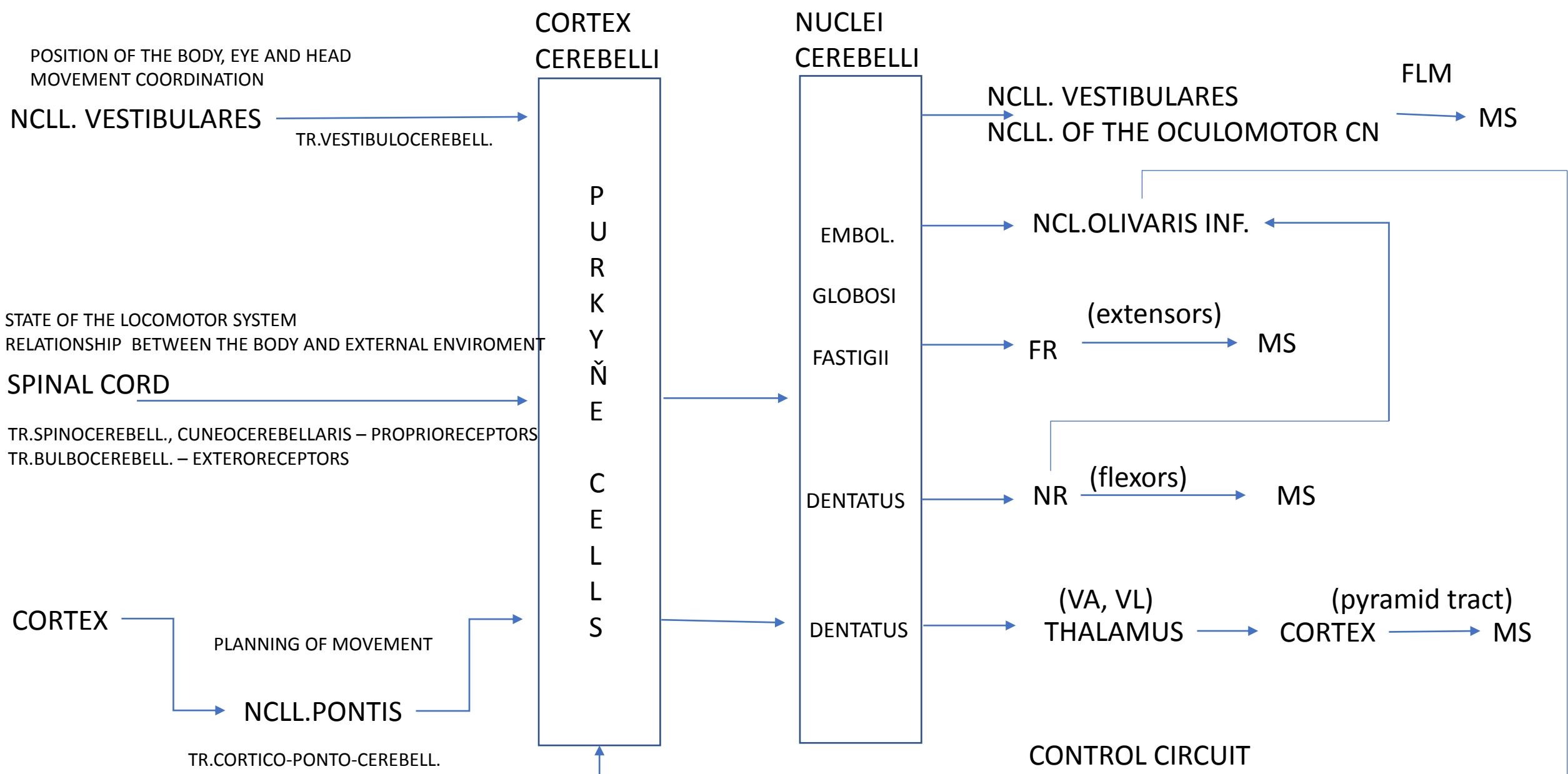


Functional divisions of cerebellum

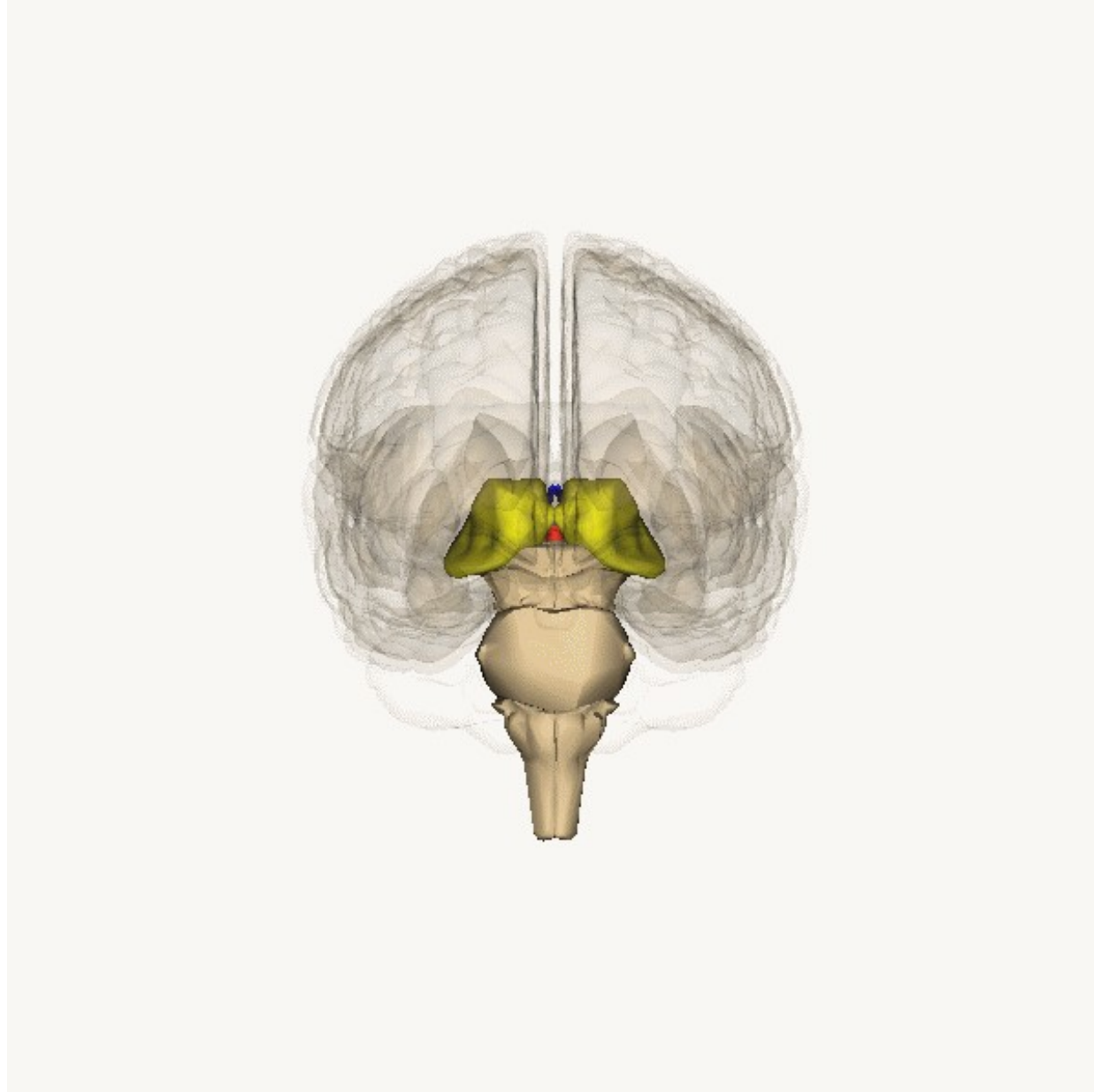
phylogenetic	anatomical	connection	function
ARCHICEREBELLUM	VESTIBULOCEREBELLUM (flocculonodular lobe, lingula)	Vestibular nuclei	Posture and eye movements Maintaining of equilibrium
PALEOCEREBELLUM	SPINOCEREBELLUM (anterior, posterior vermis closed cortex)	Spinal cord	Progressive movements Coordination of movements Regulation of muscle tone
NEOCEREBELLUM	PONTOCEREBELLUM (lateral cortex)	Cerebral cortex via ncll.pontis	Speech, manipulative movements Planning of movements

AFFERENTES

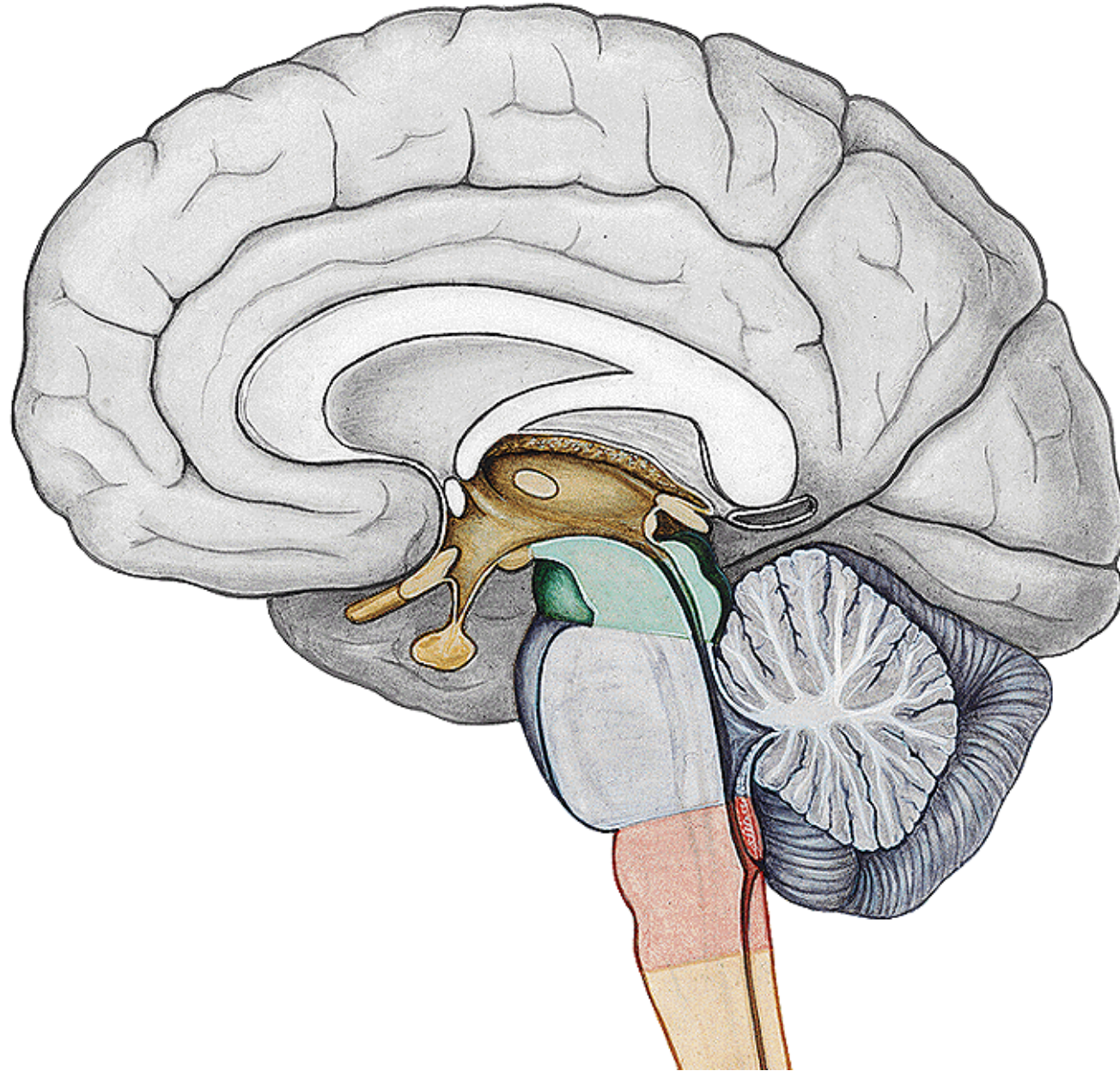
EFFERENTES



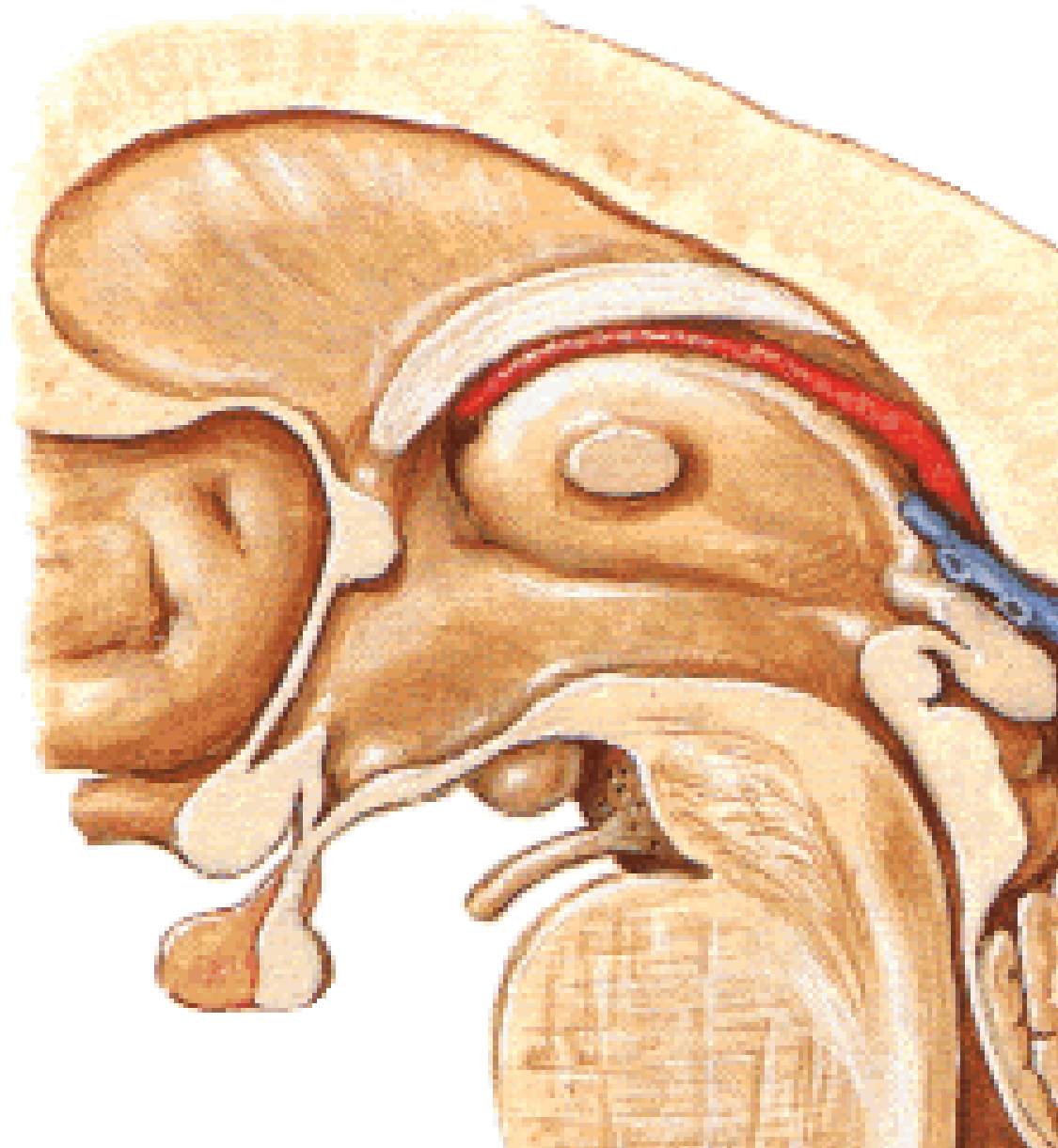
Diencephalon



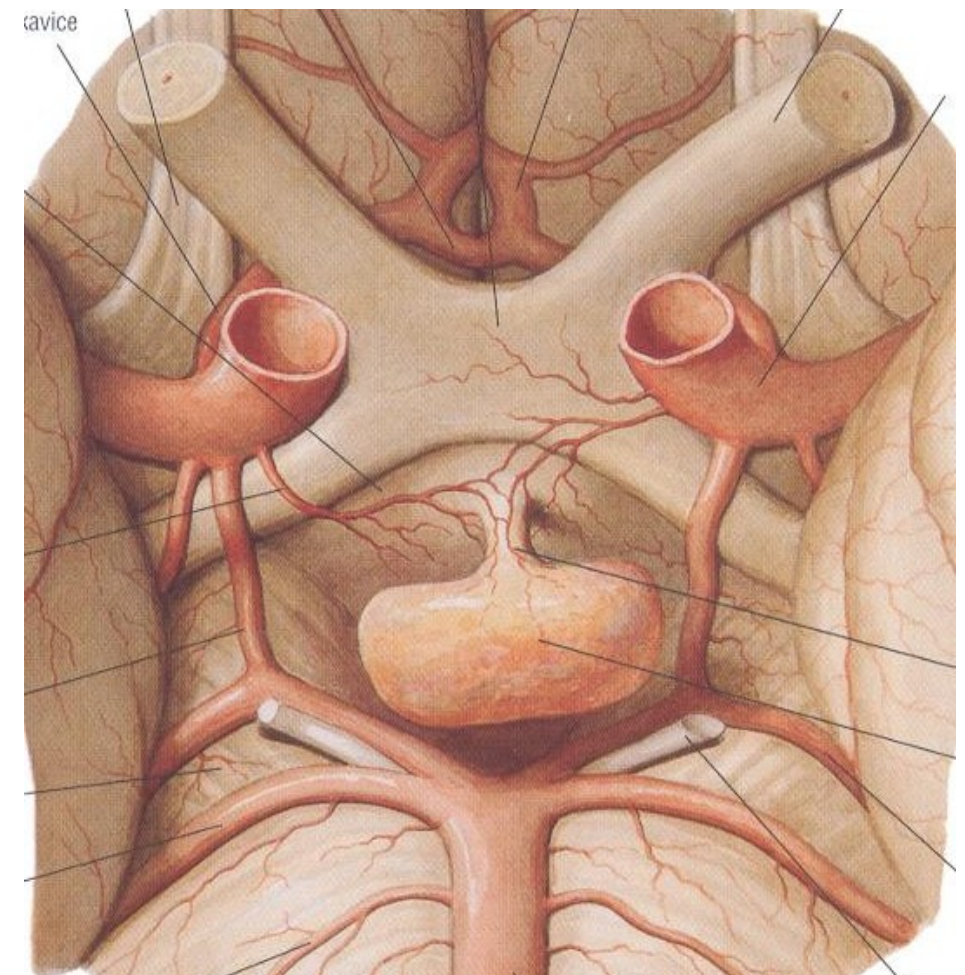
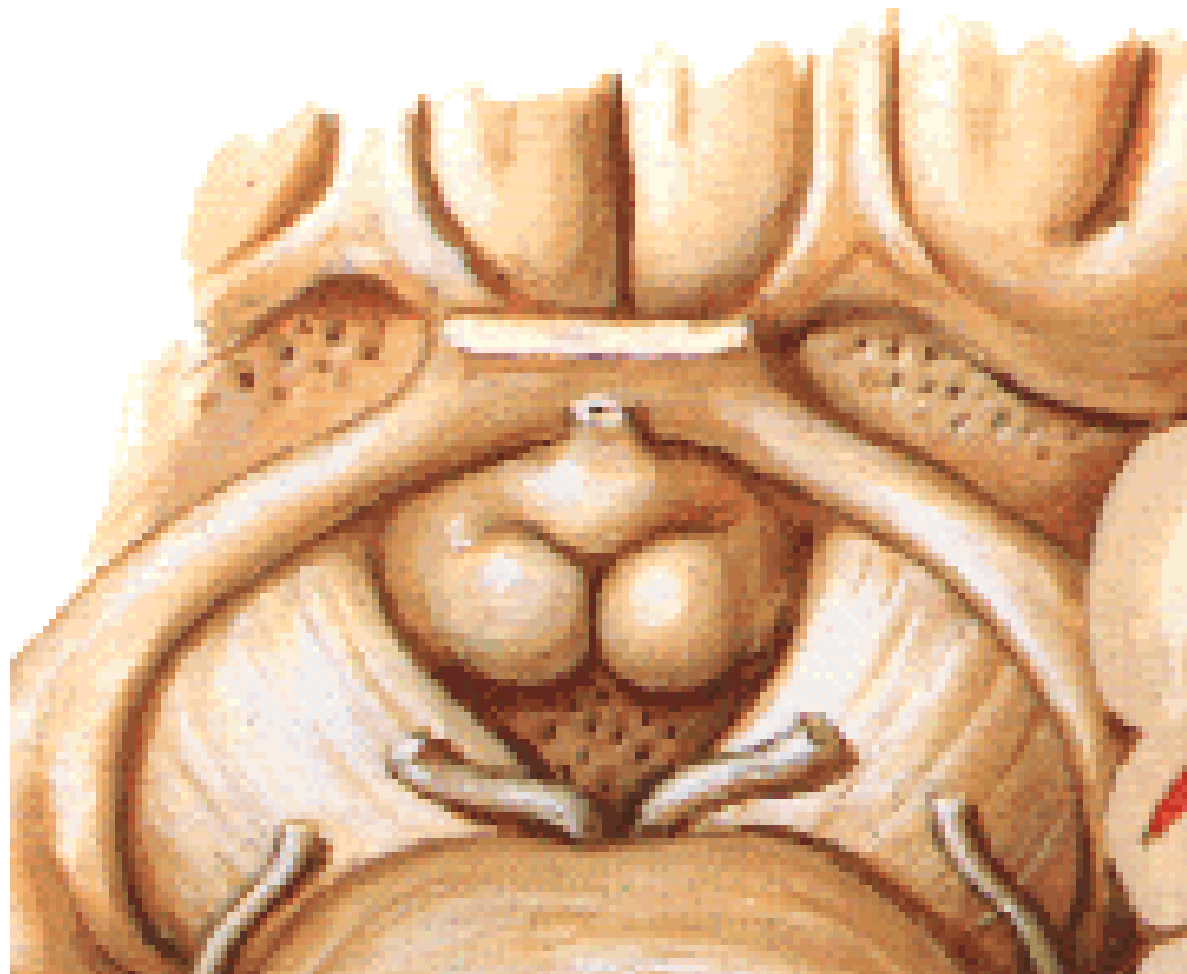
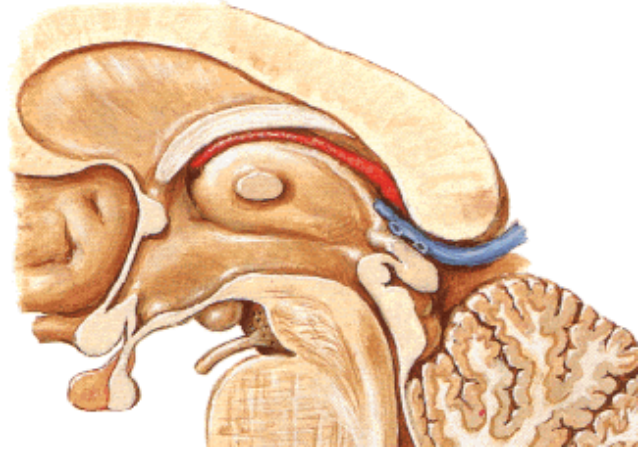
Diencephalon - parts



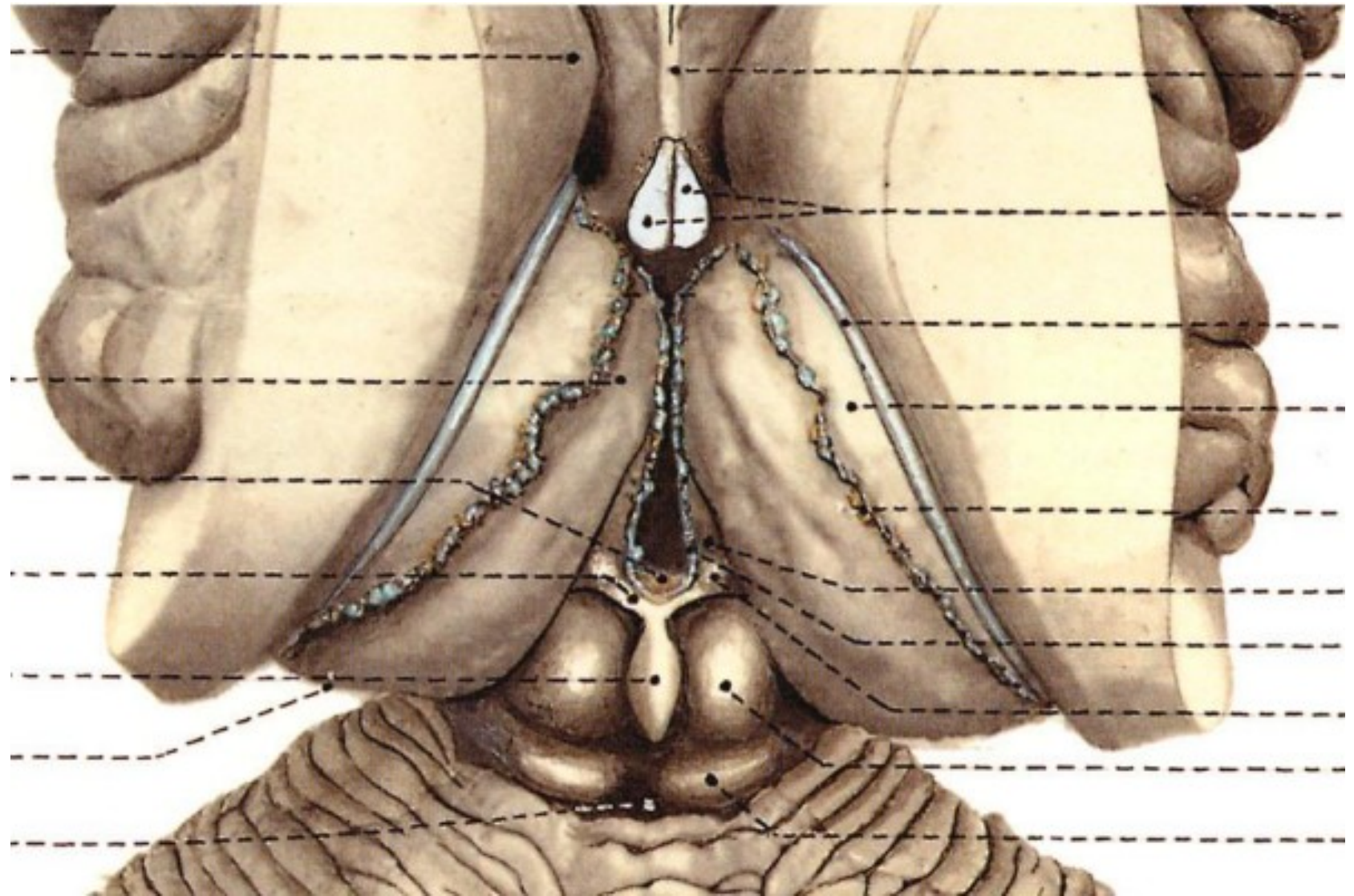
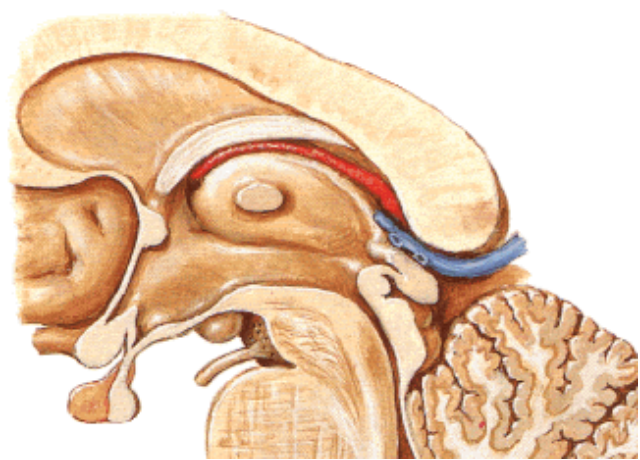
ROSTRAL SIDE OF DIENCEPHON



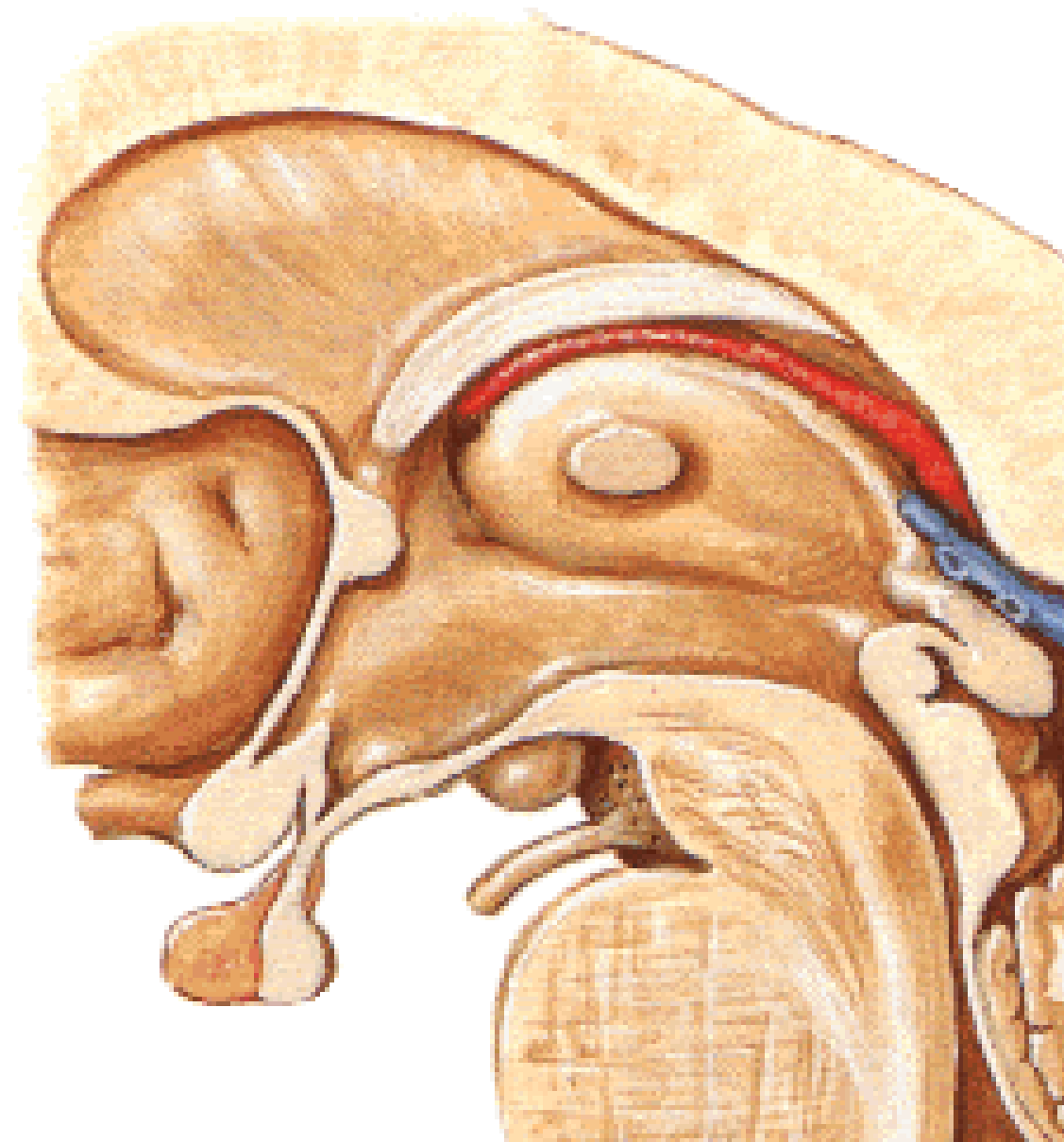
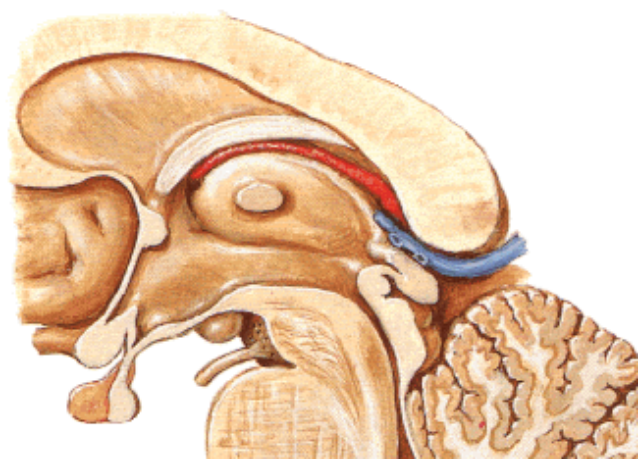
BASAL SIDE OF DIENCEPHALON



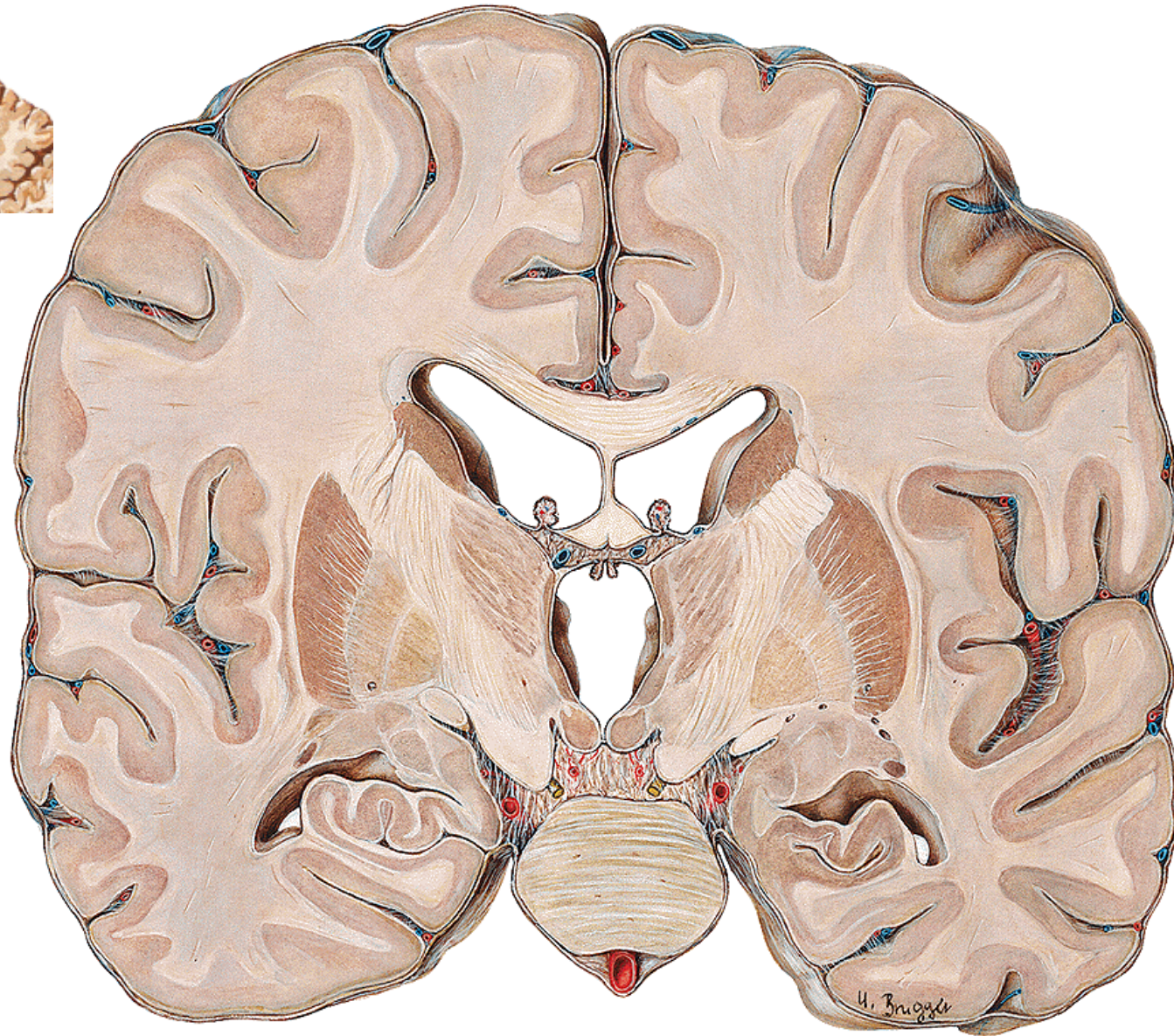
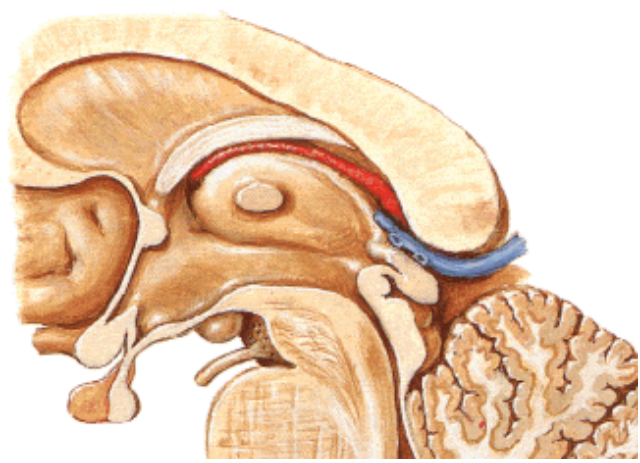
DORSAL SIDE OF DIENCEPHALON



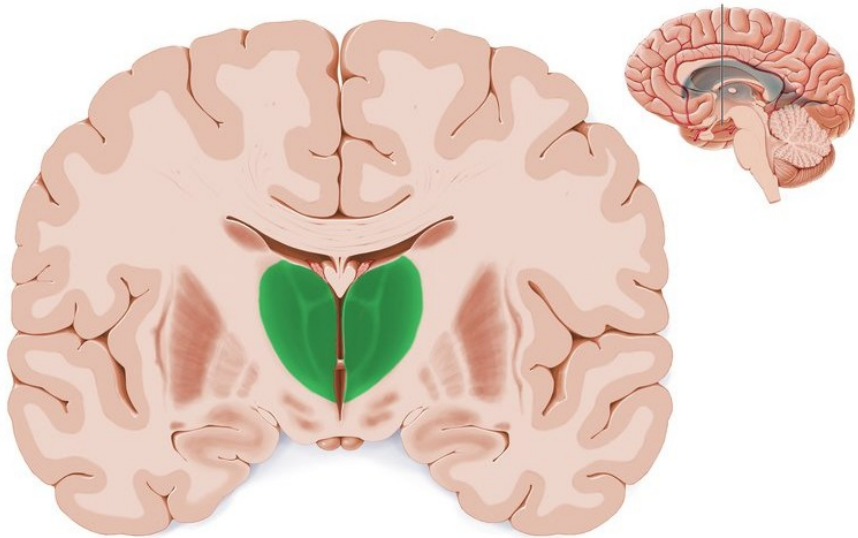
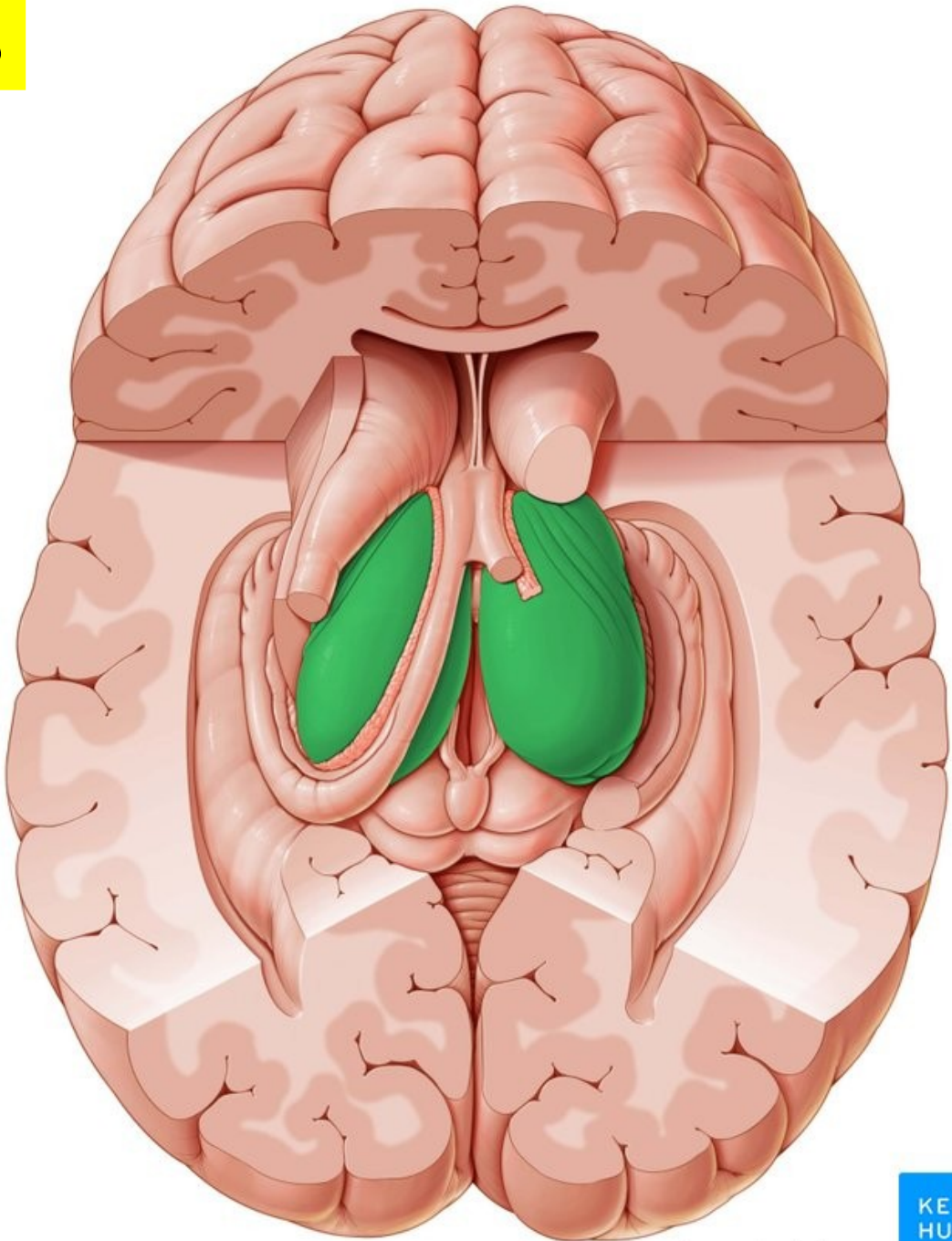
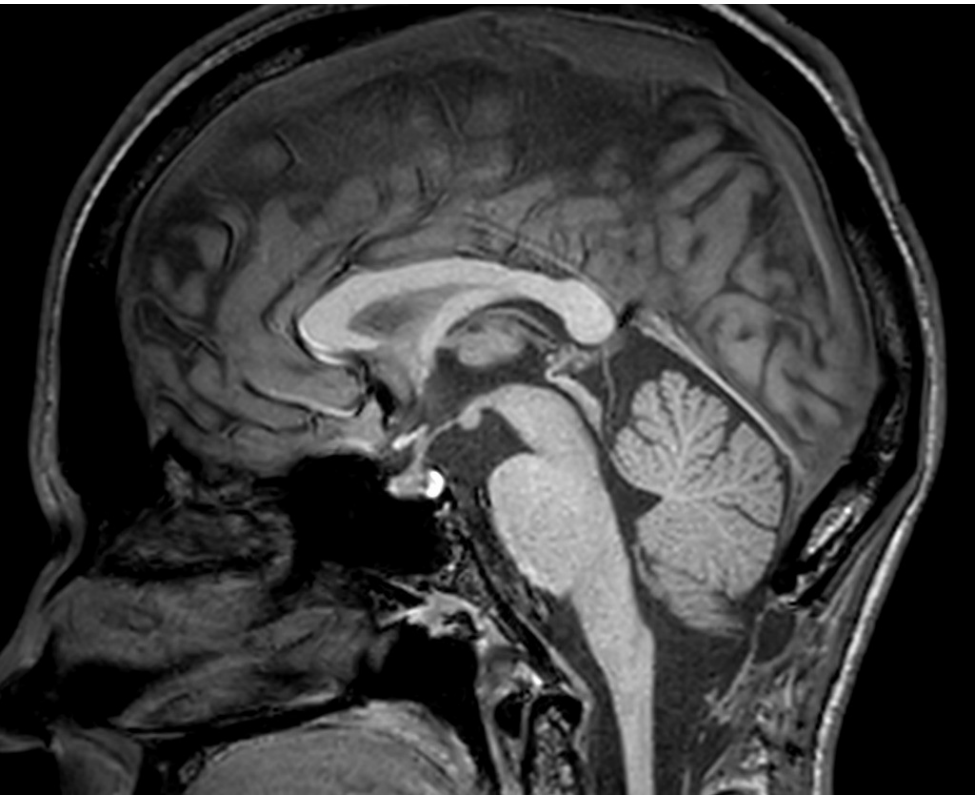
MEDIAL SIDE OF DIENCEPHALON



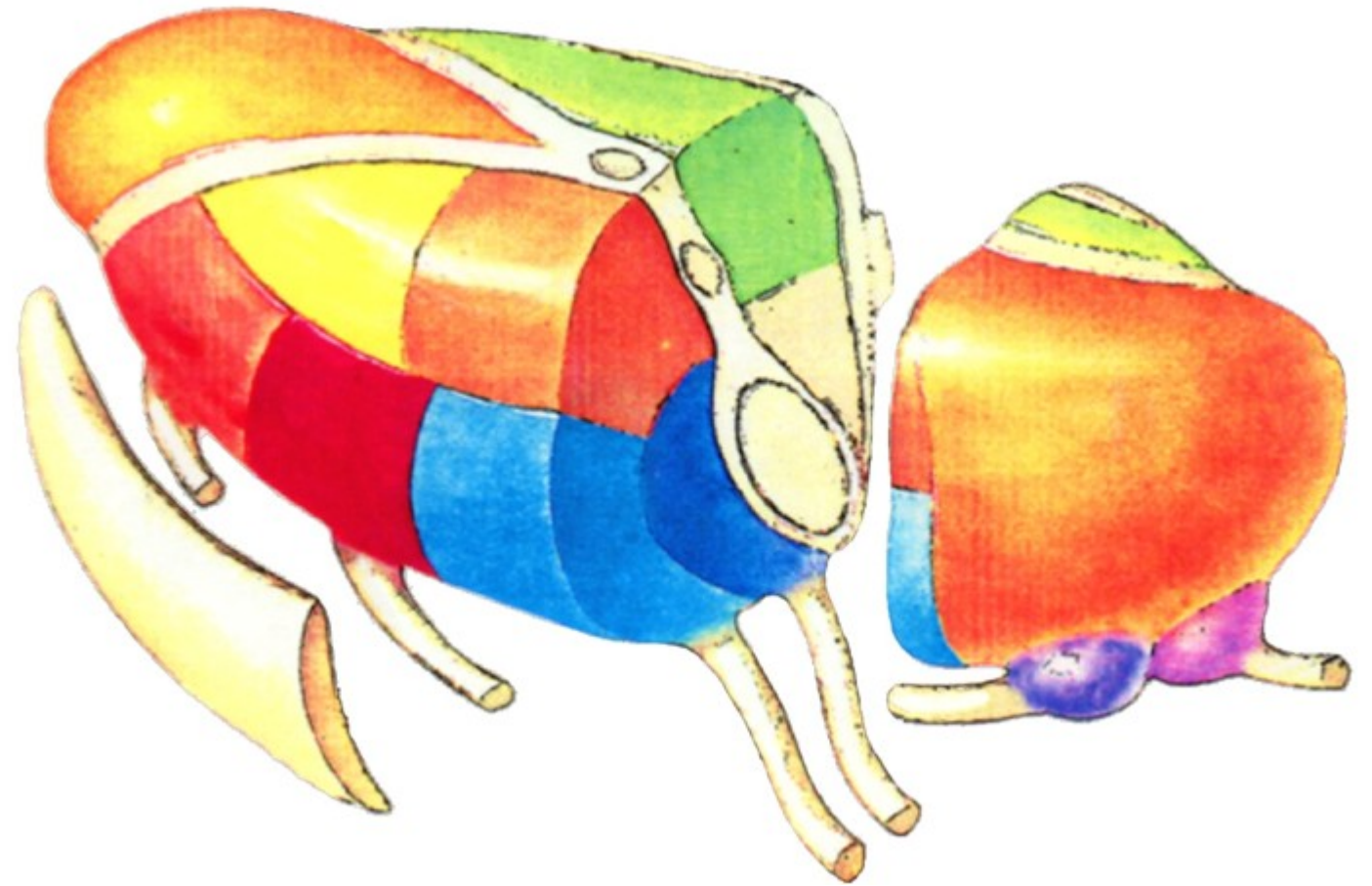
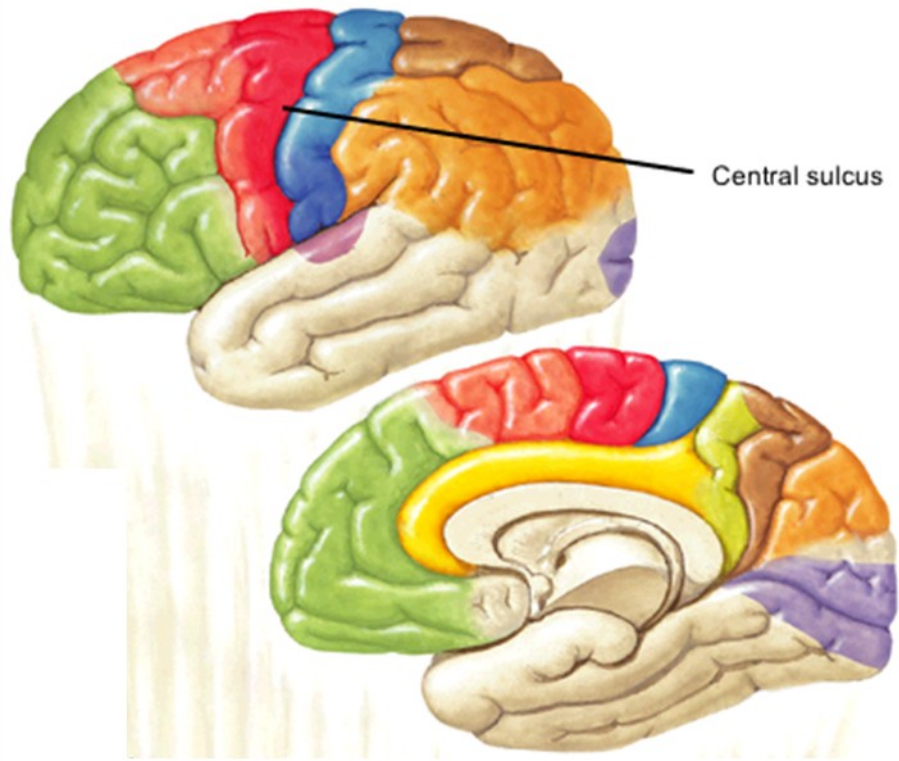
LATERAL SIDE OF DIENCEPHALON



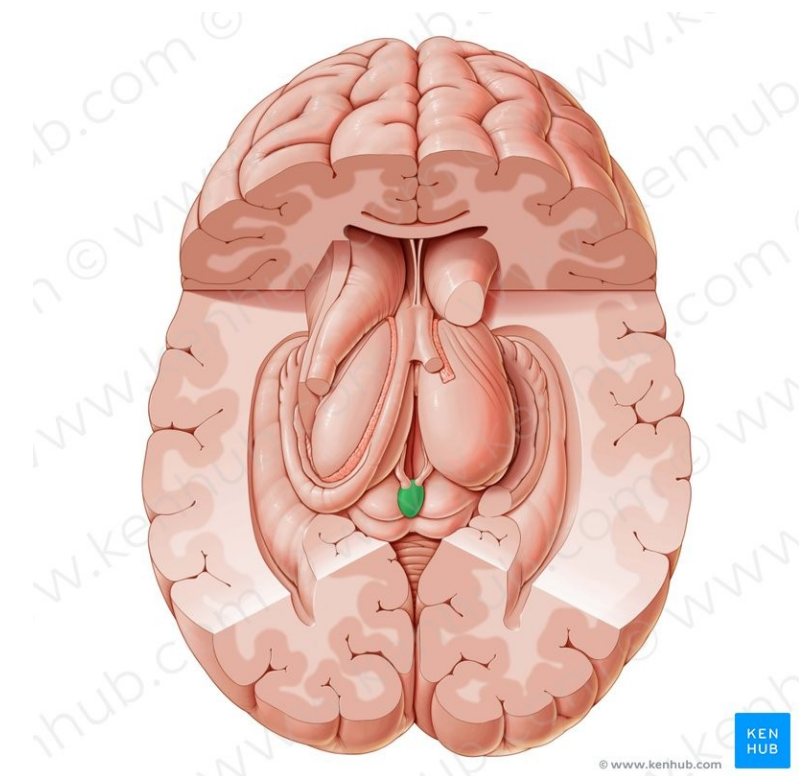
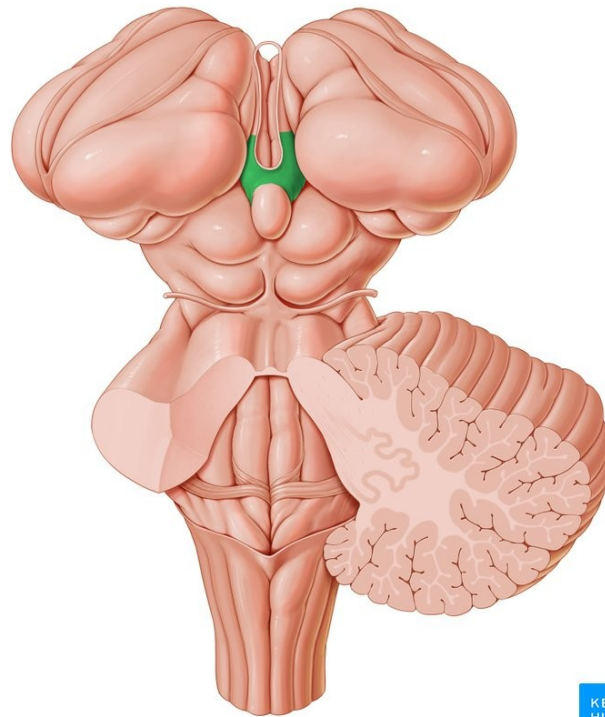
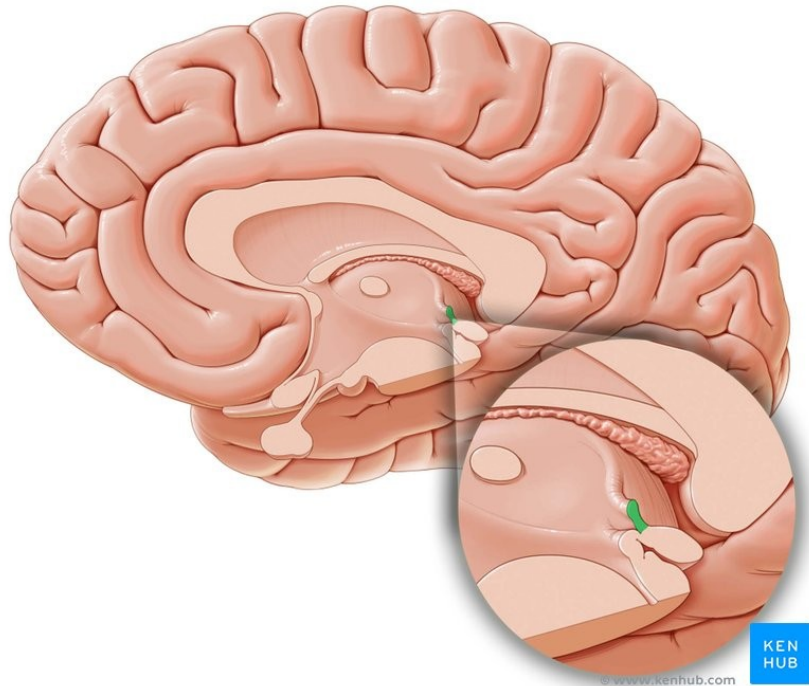
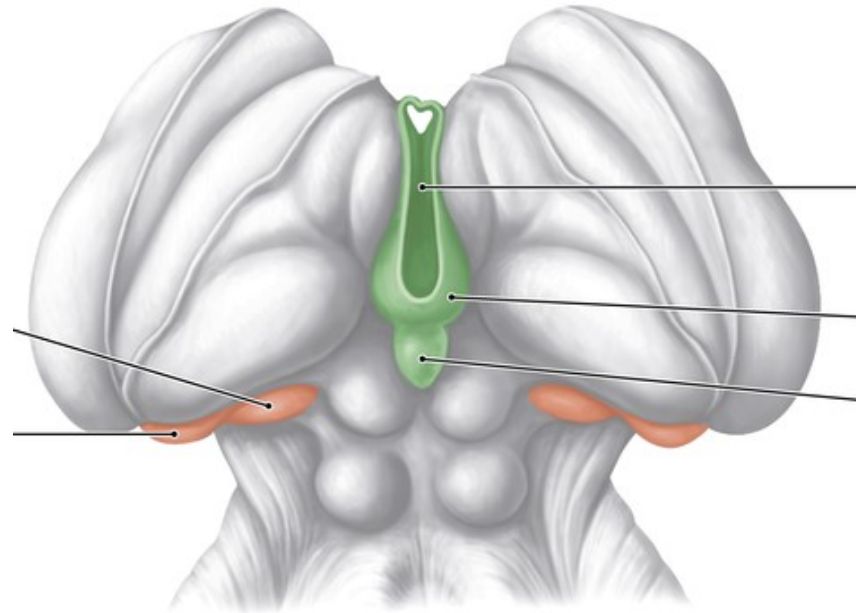
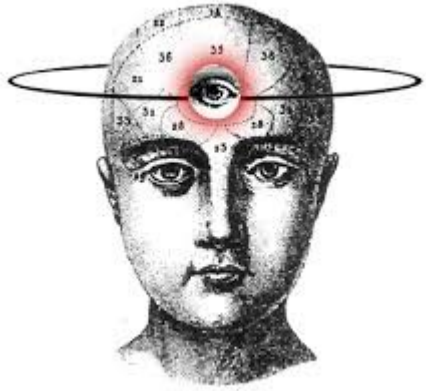
THALAMUS



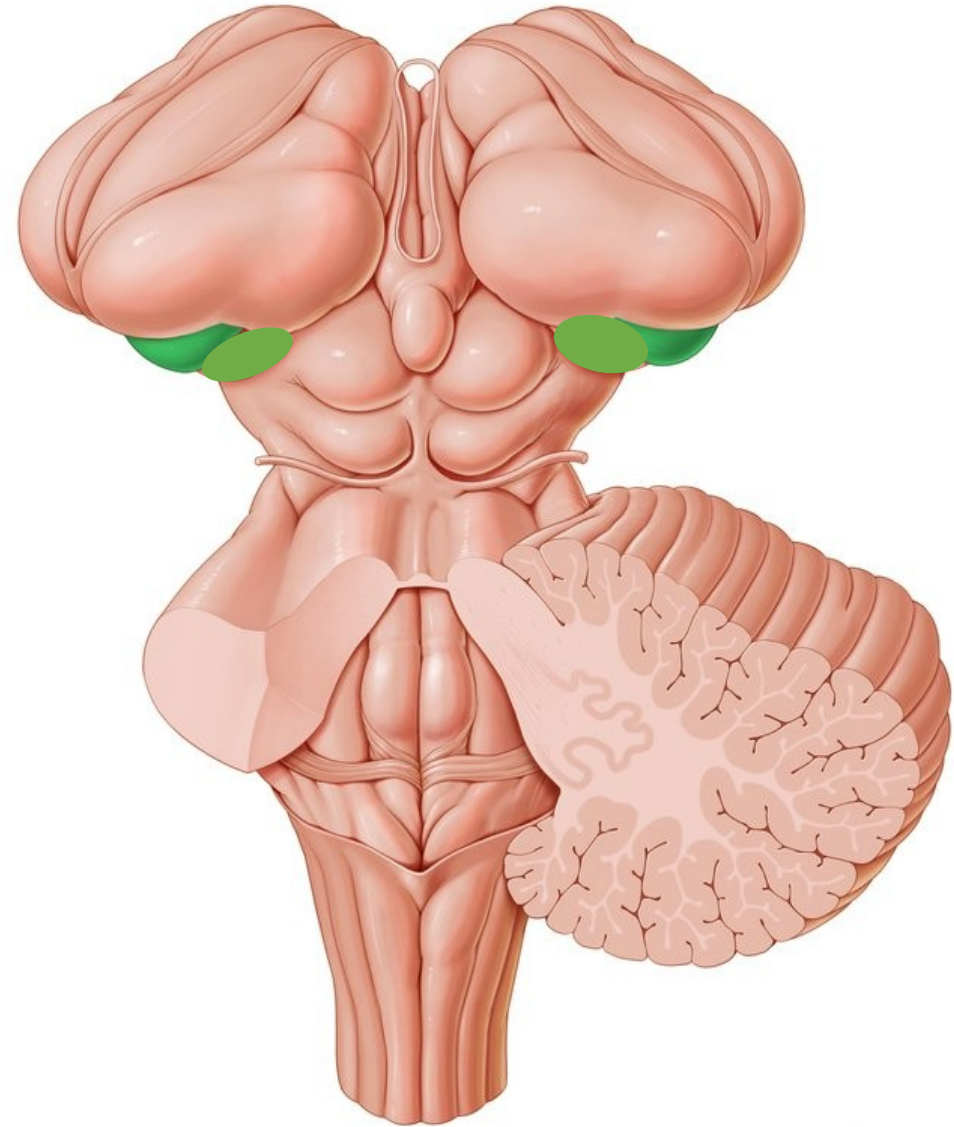
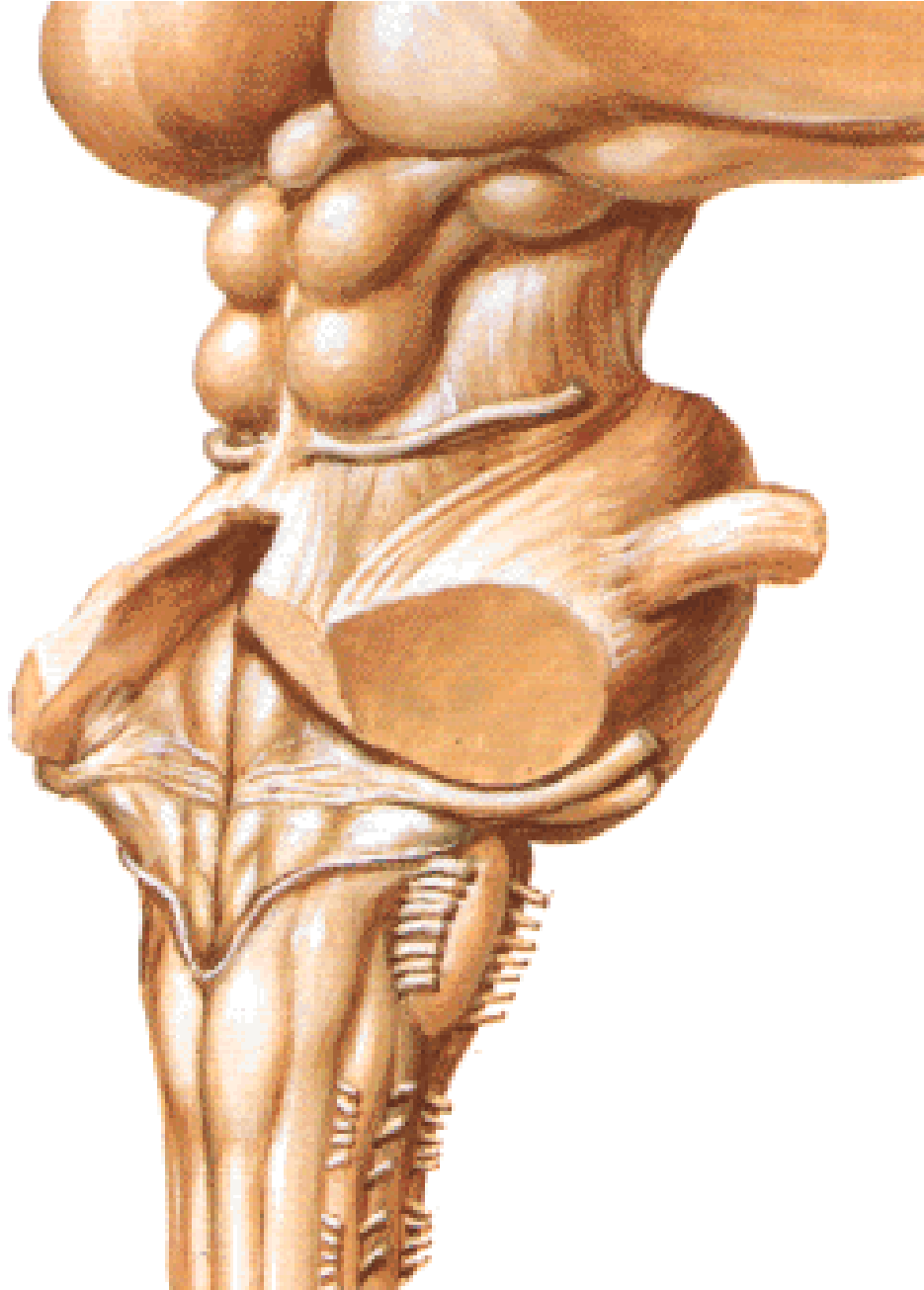
THALAMIC NUCLEI



EPITHALAMUS

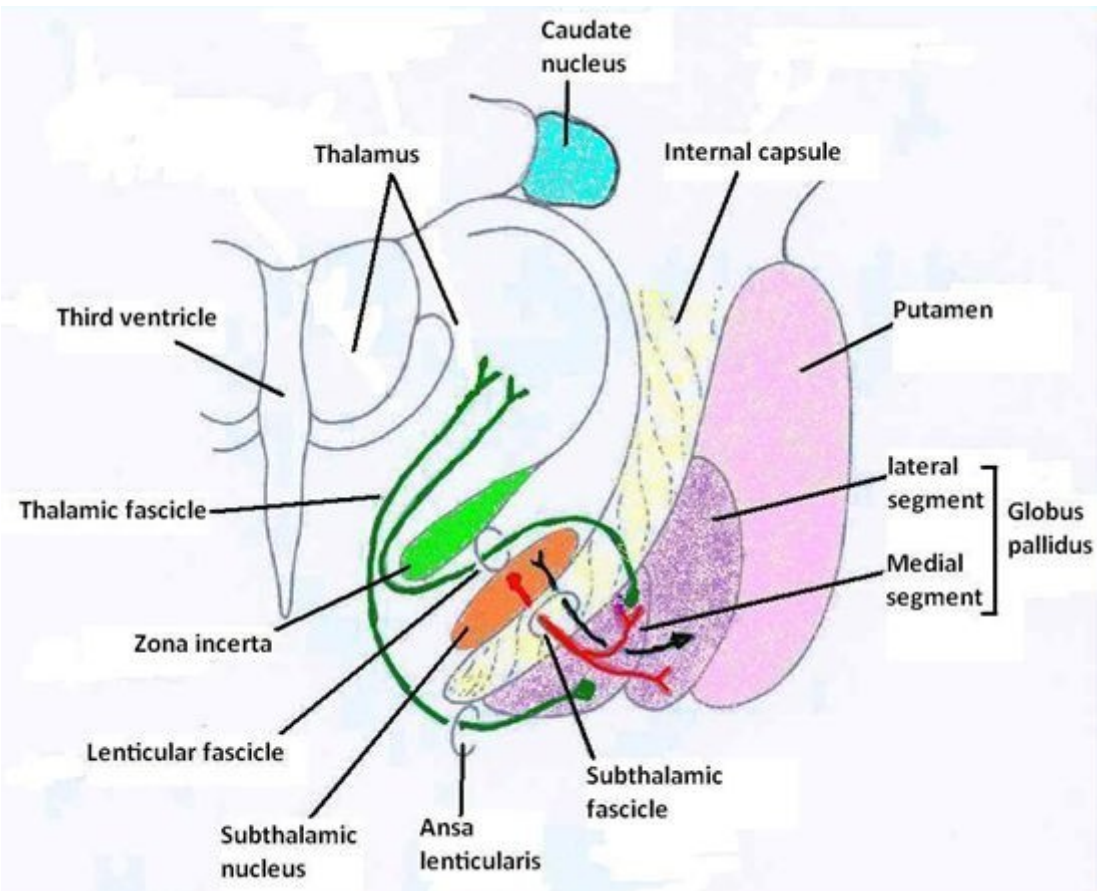
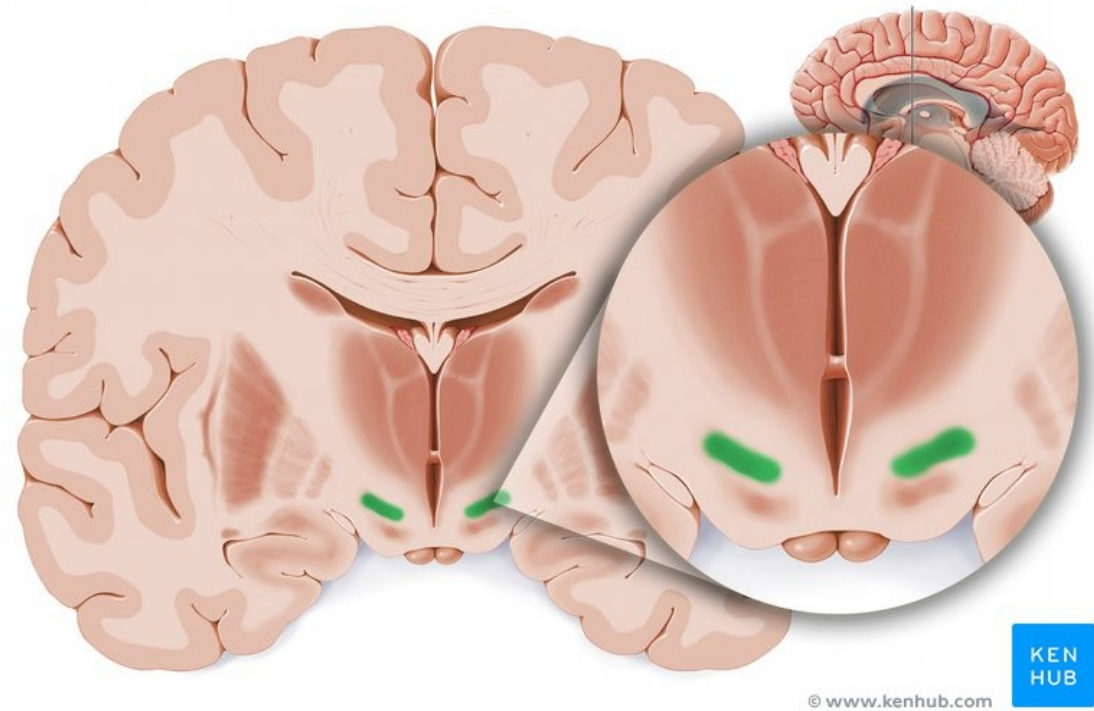


METATHALAMUS

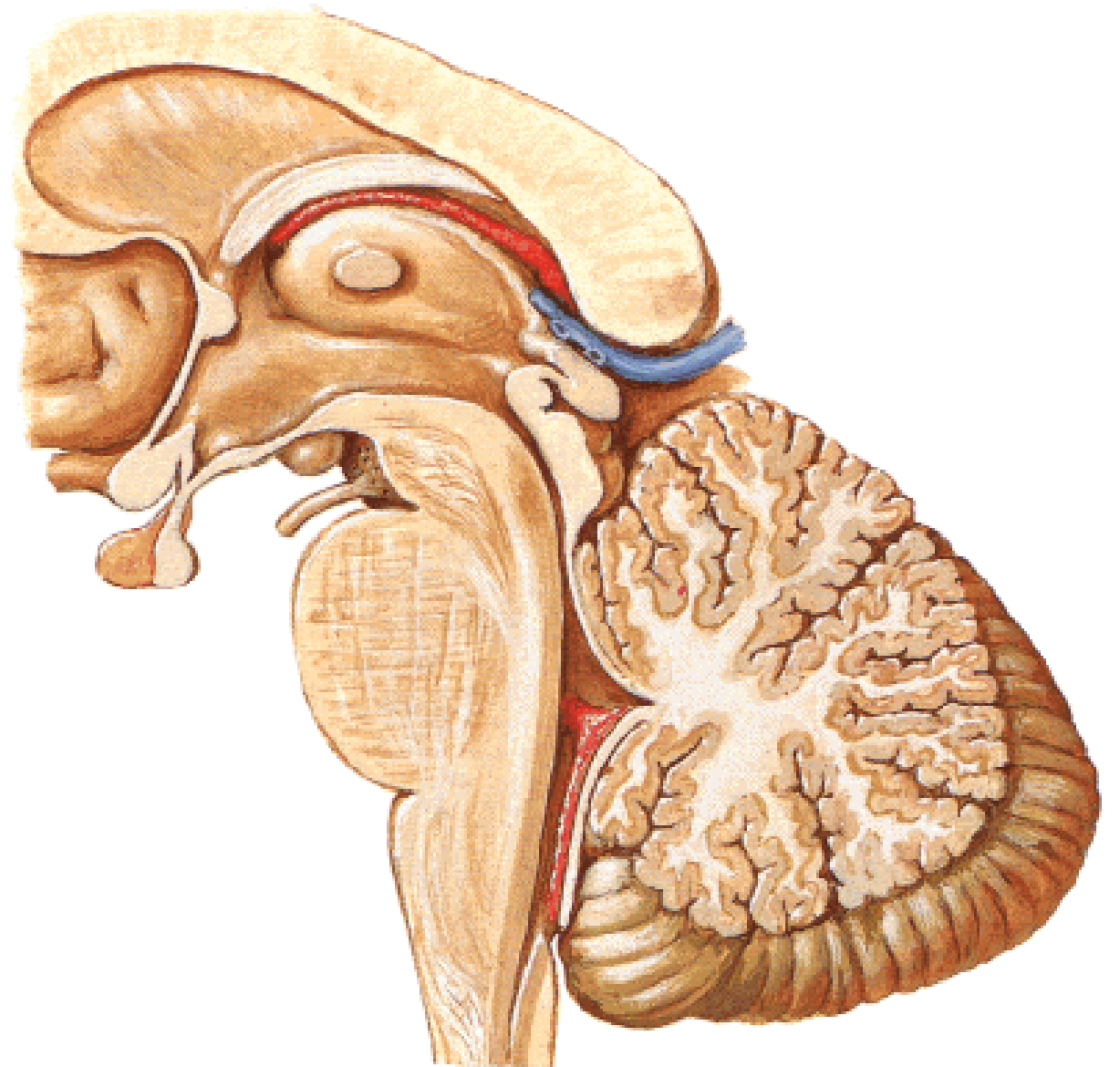
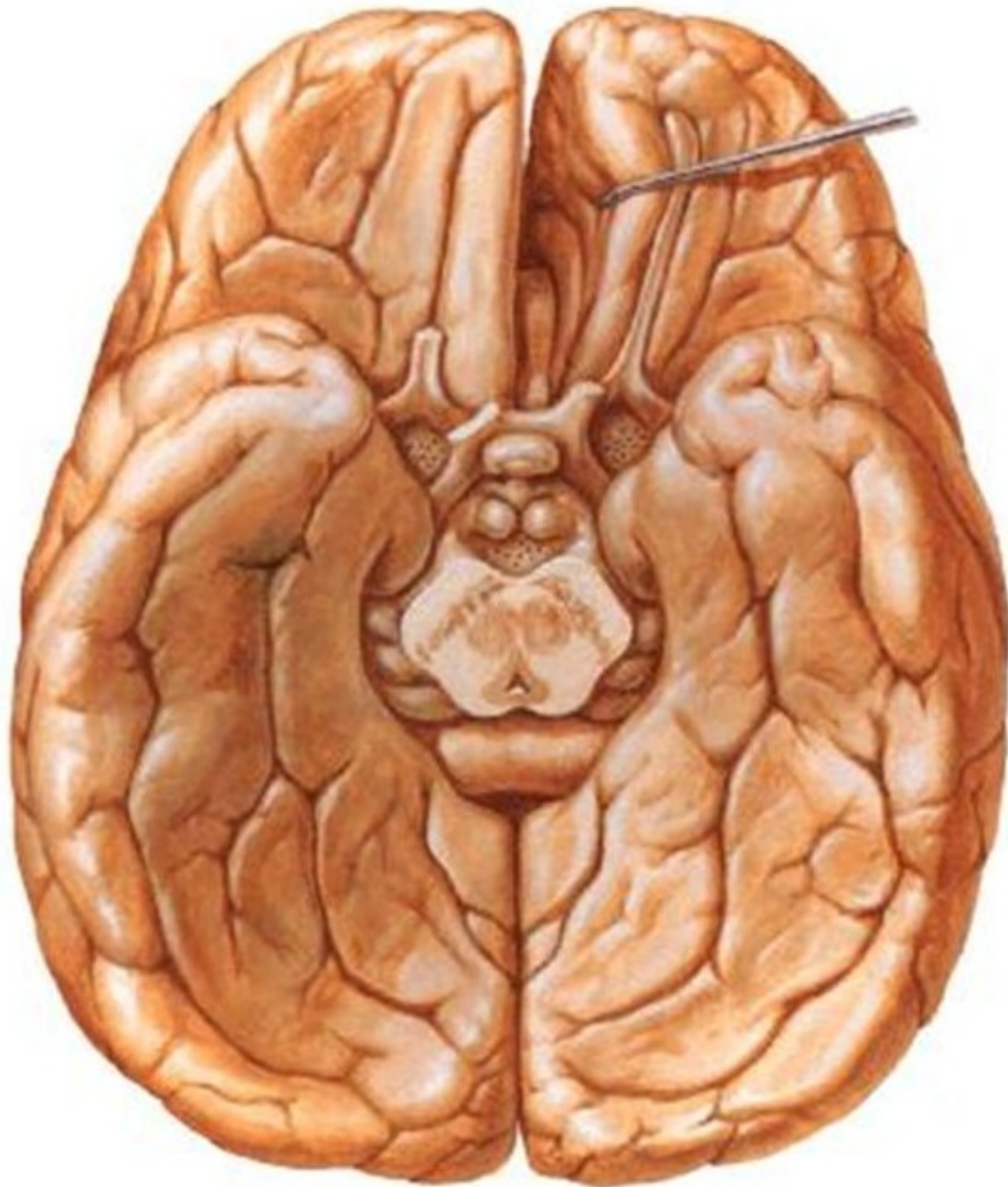


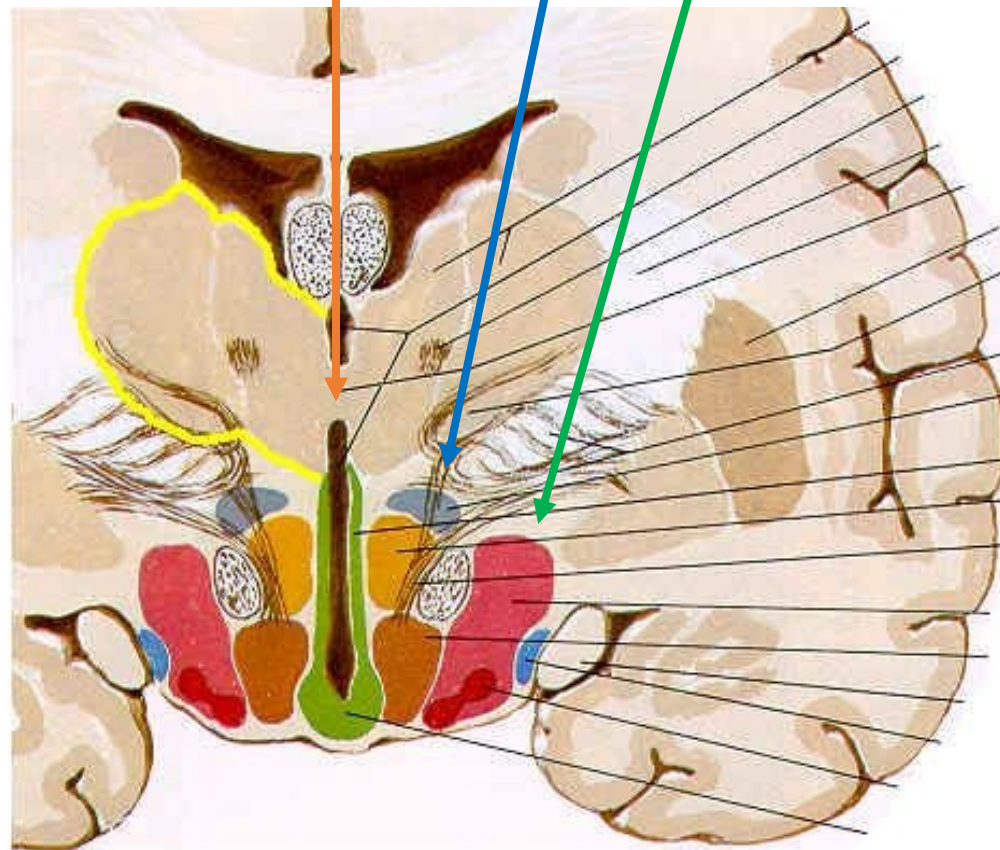
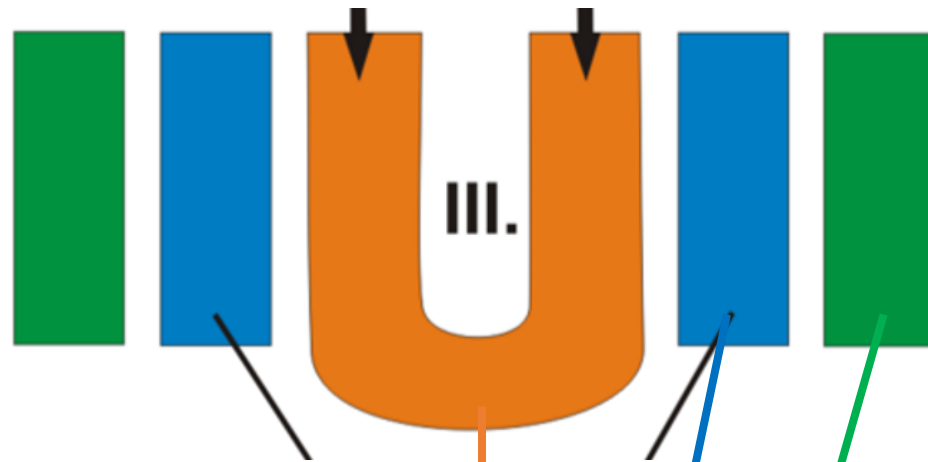
SUBTHALAMUS

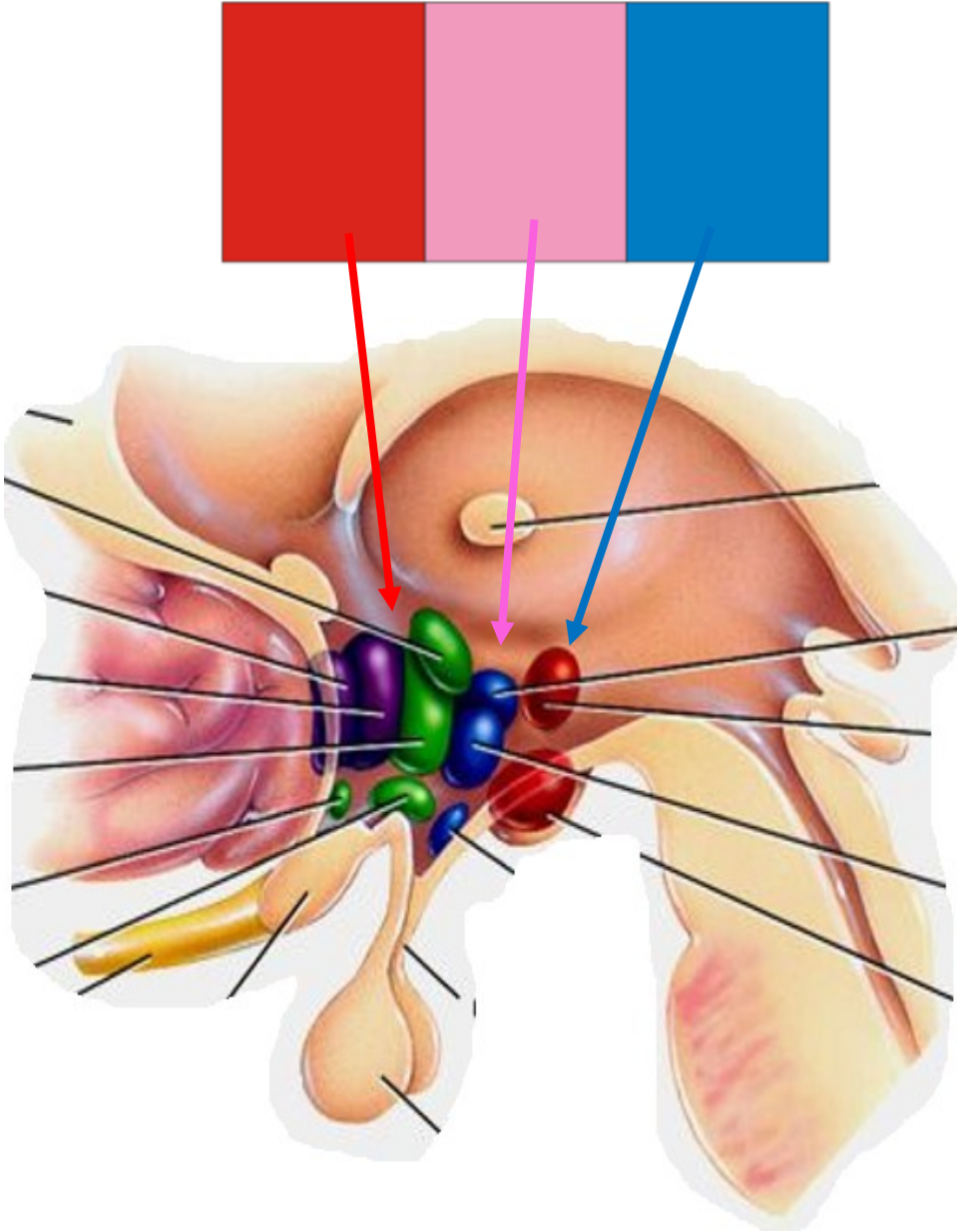
NCL.SUBTHALAMICUS ZONA INCERTA

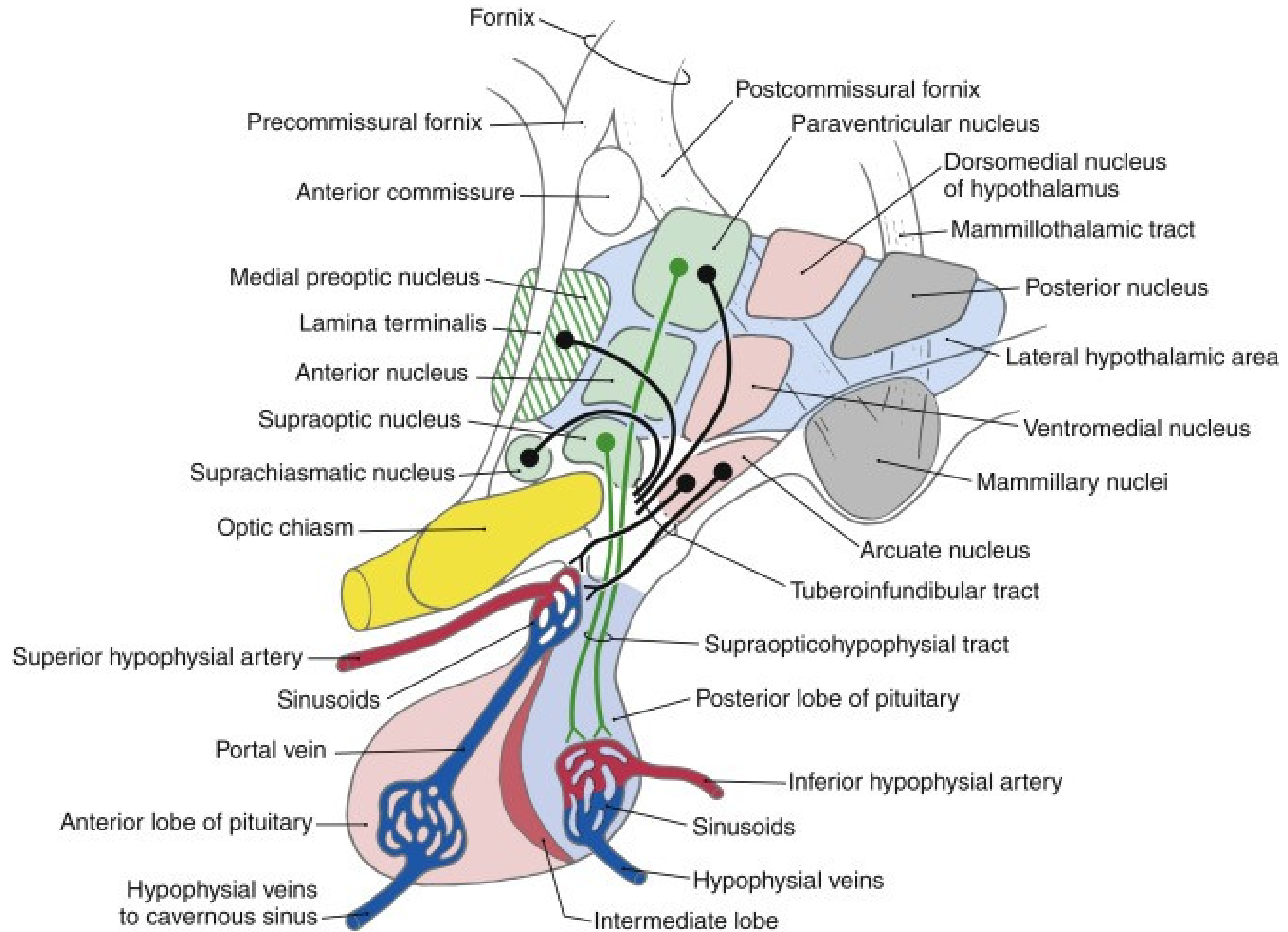


HYPOTHALAMUS

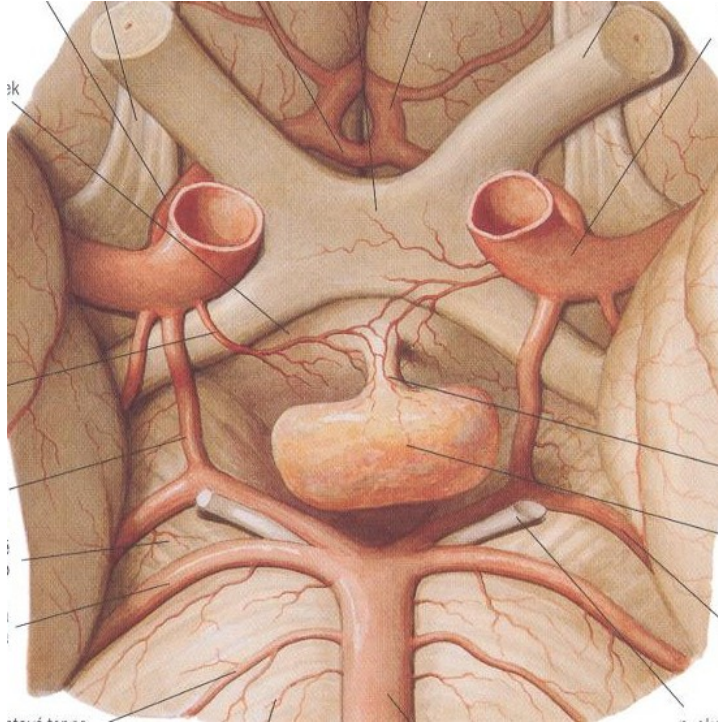
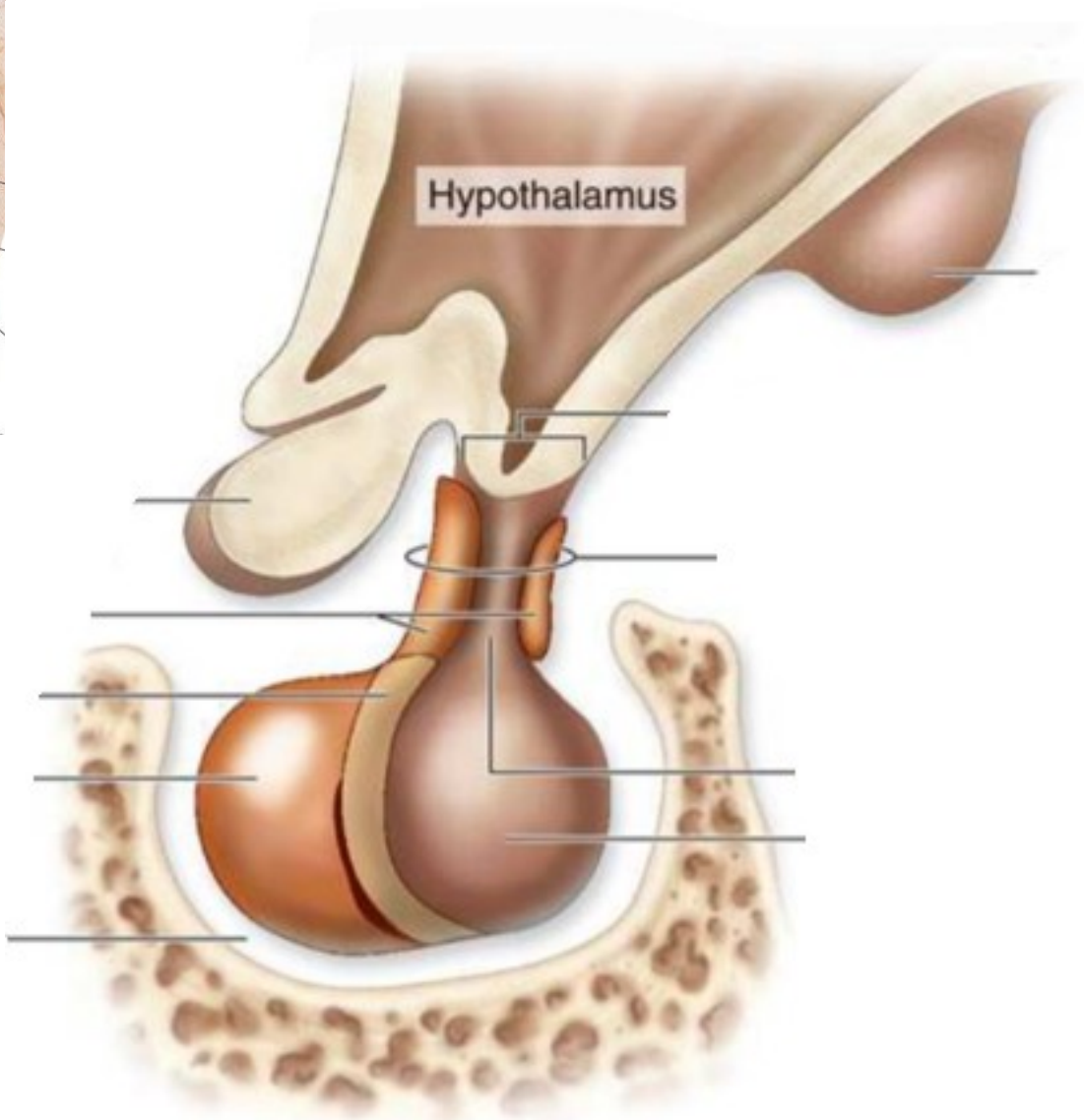
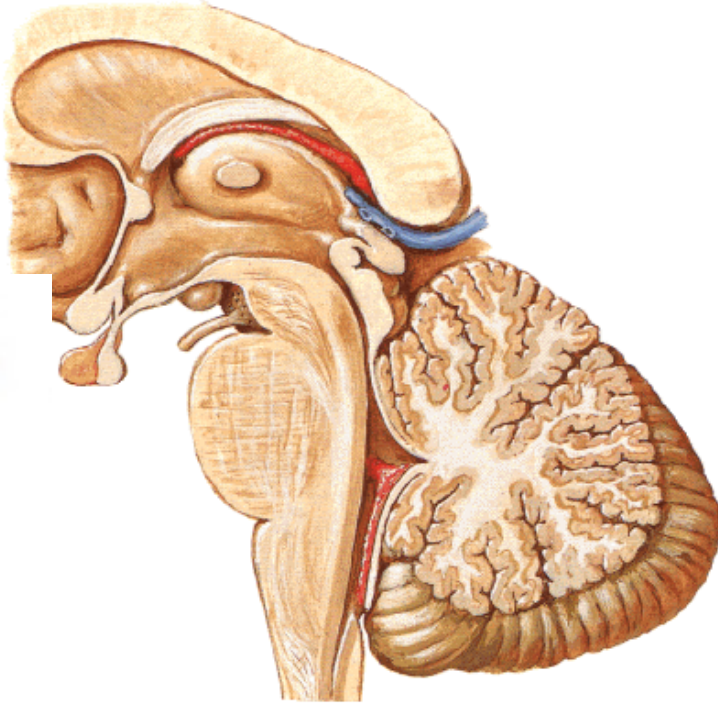




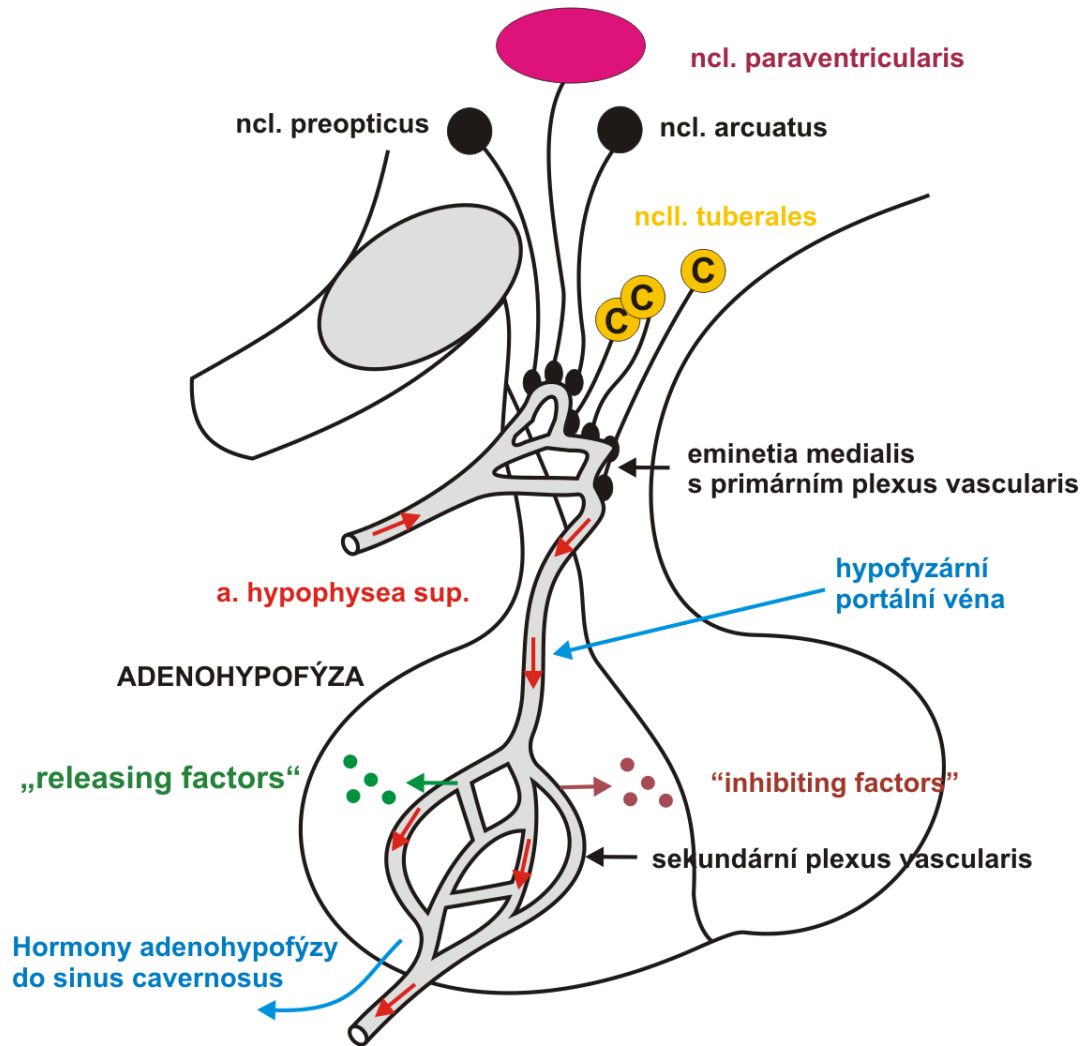




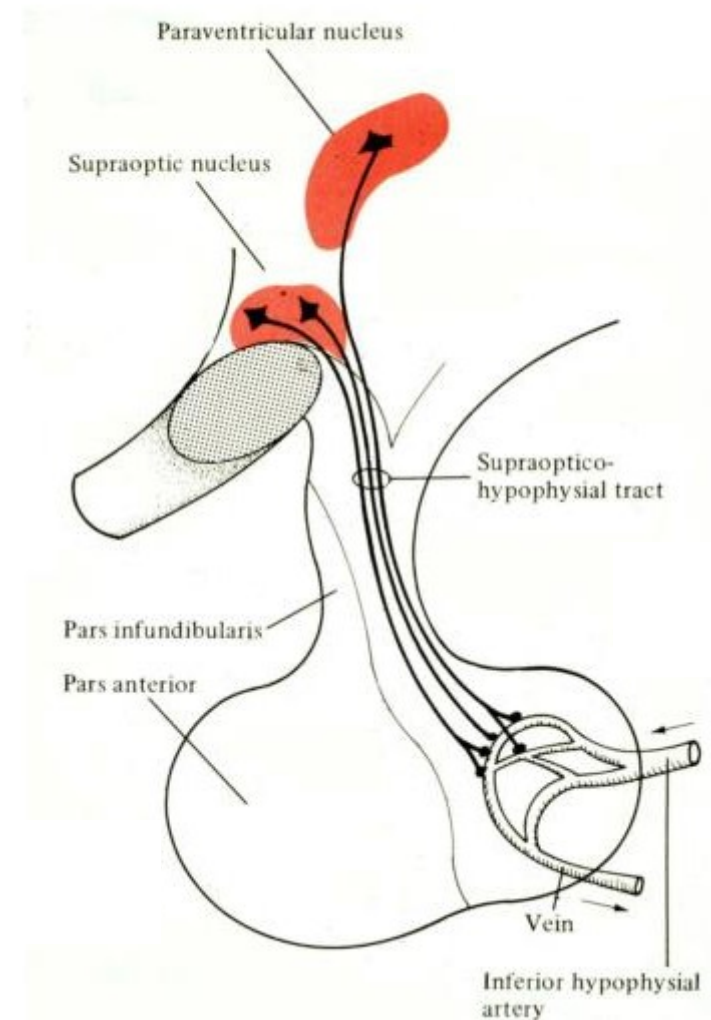
HYPOPHYSIS



ADENOHYPHYSIS



NEUROHYPHYSIS





Happy Easter!



... With Anatomy

*Gross anatomy and
structure of the
telencephalon
Ventricles, meninges
and blood supply of
the CNS*