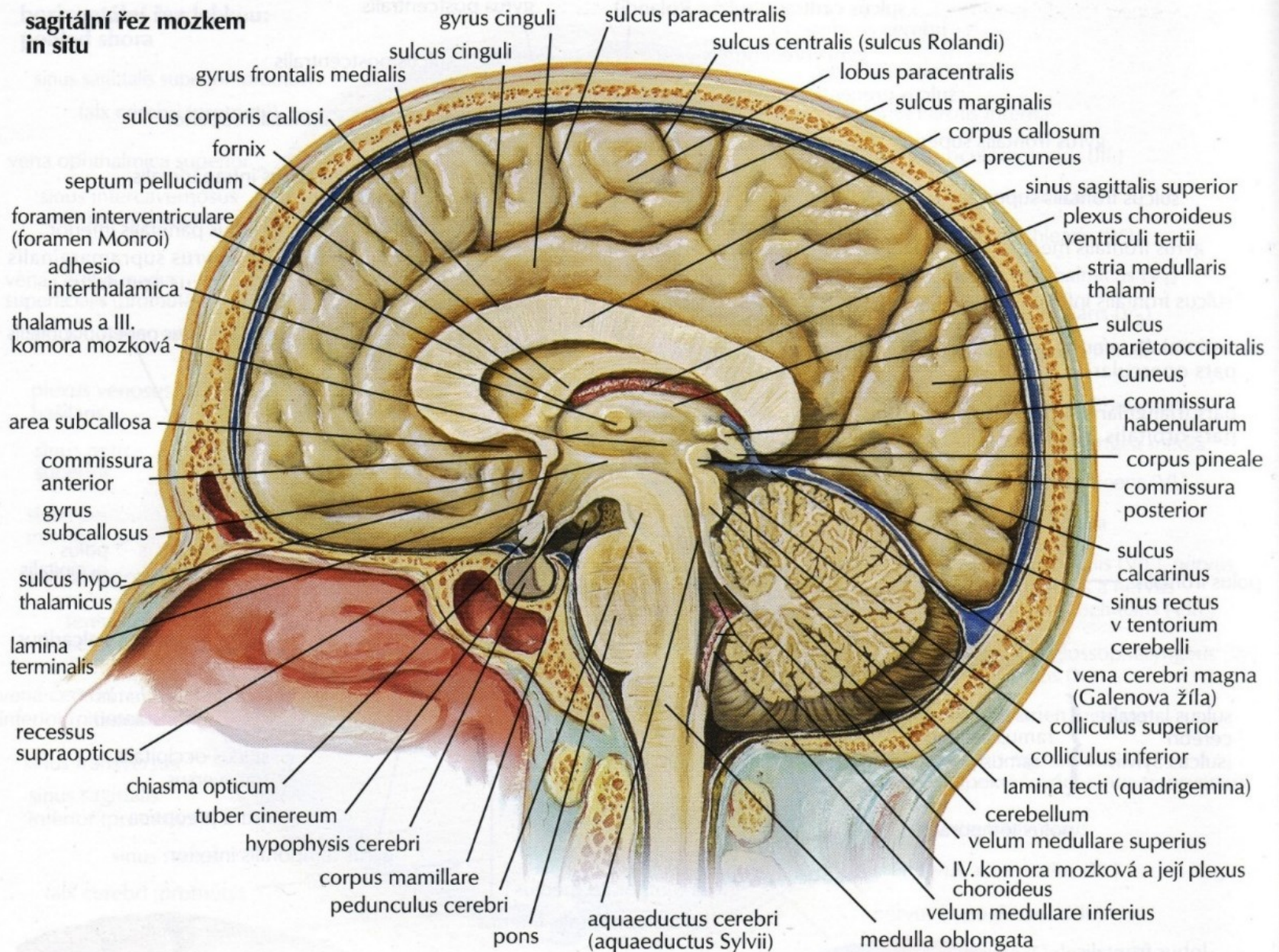


Komory, obaly a cévní zásobení CNS

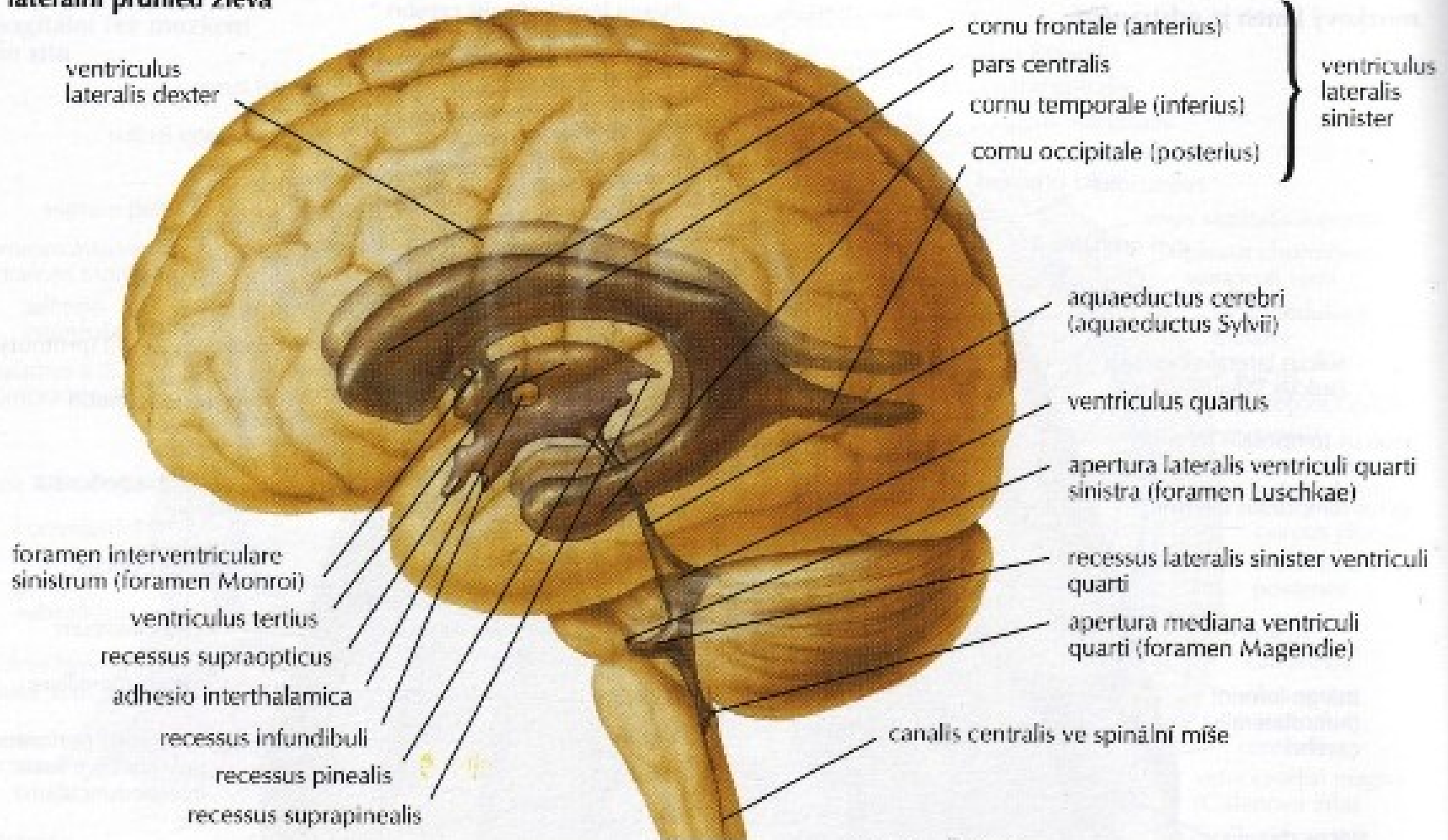


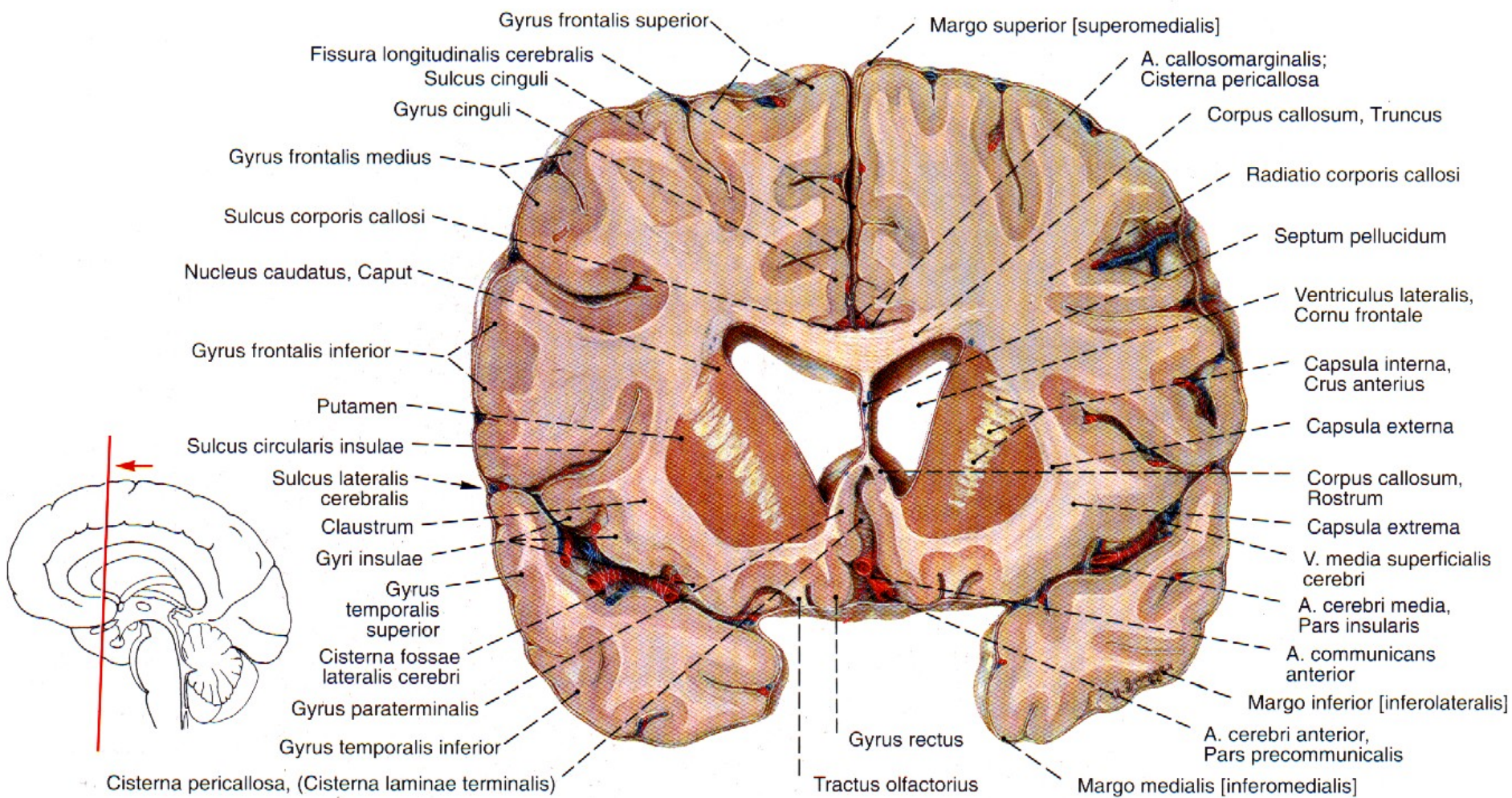
**sagitální řez mozkiem
in situ**

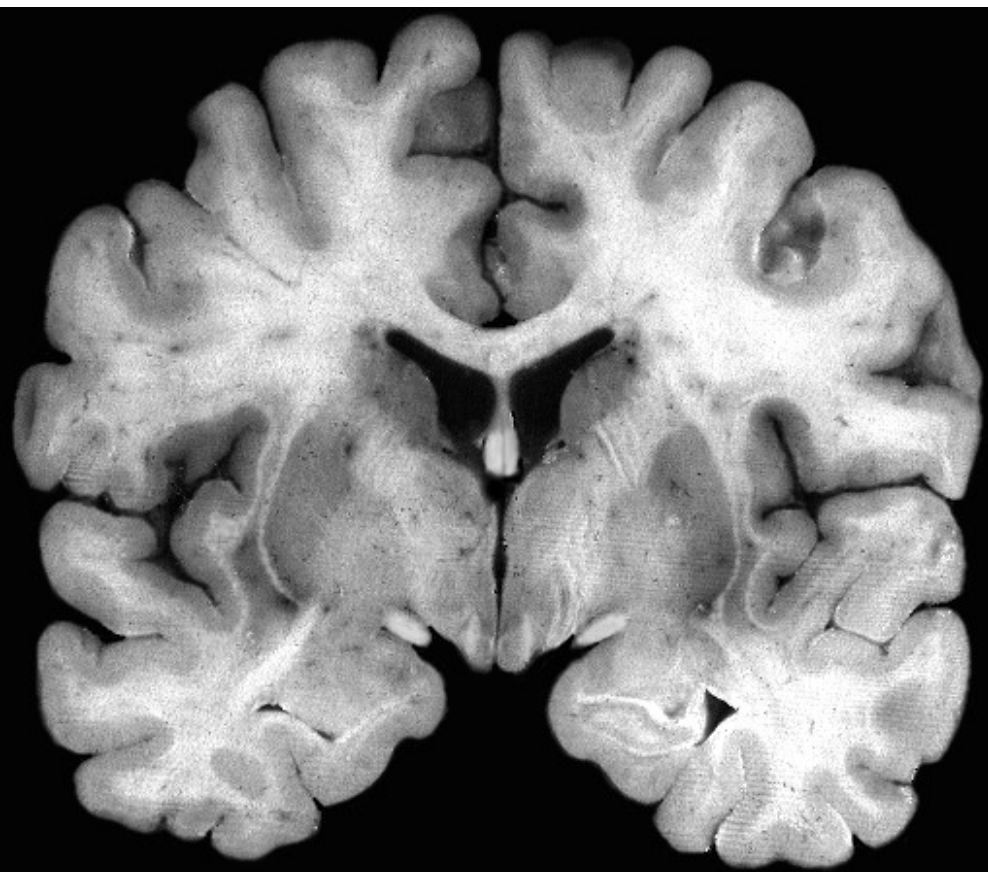
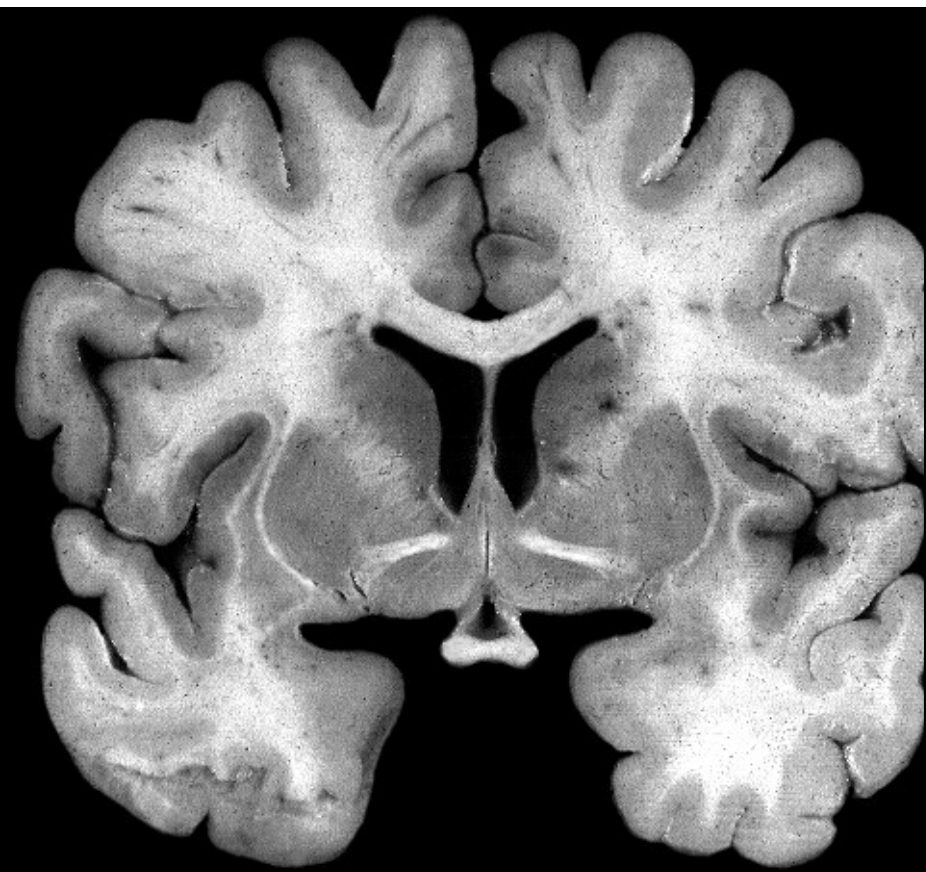


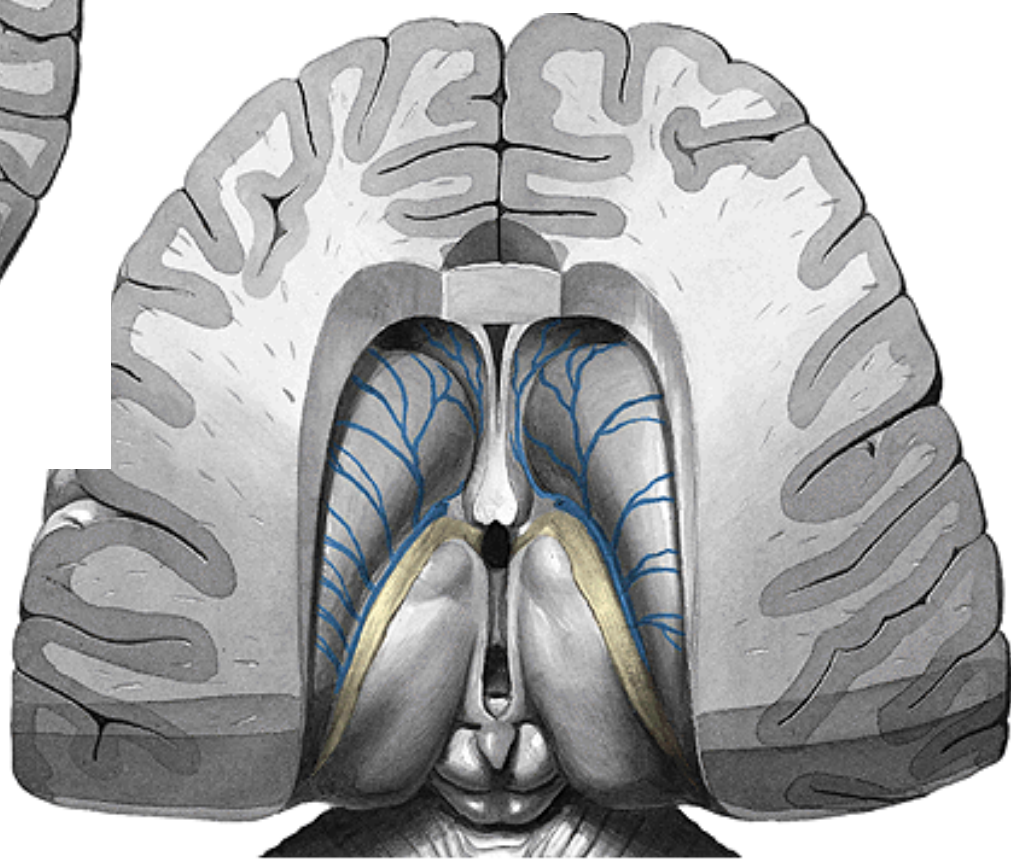
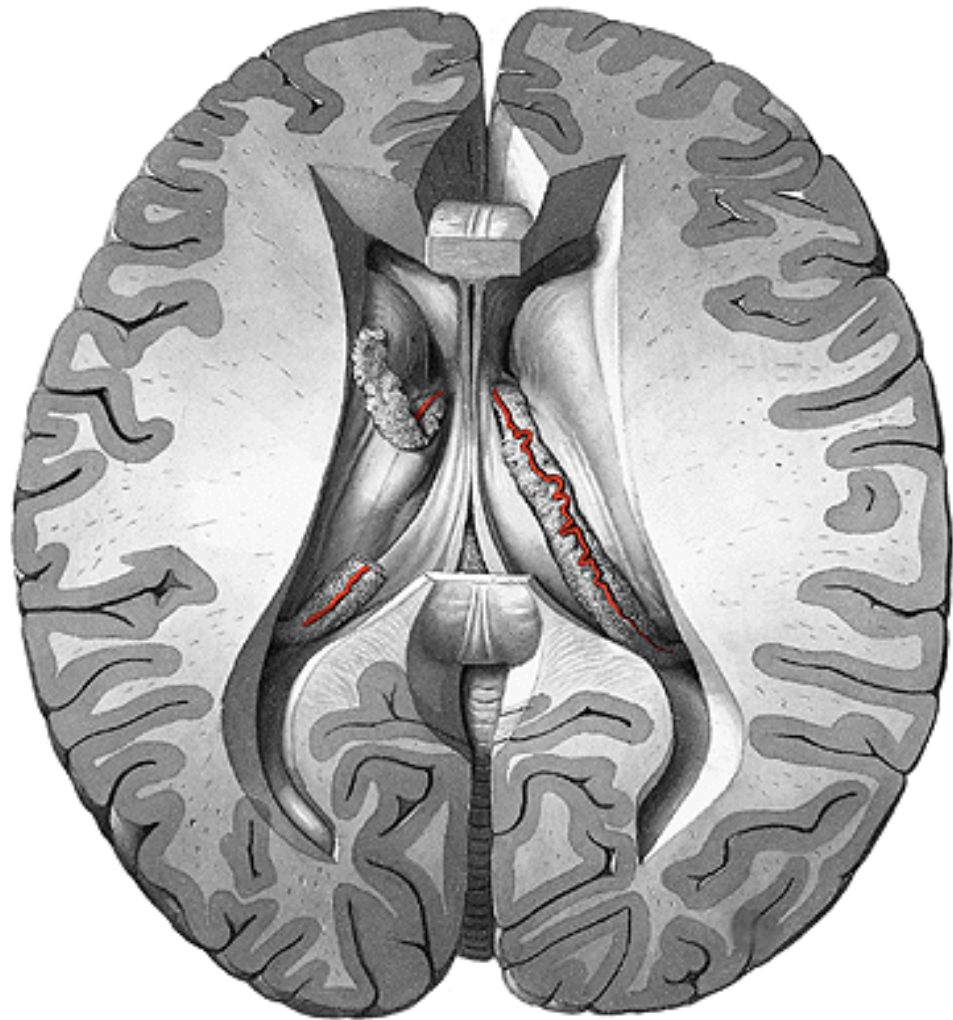


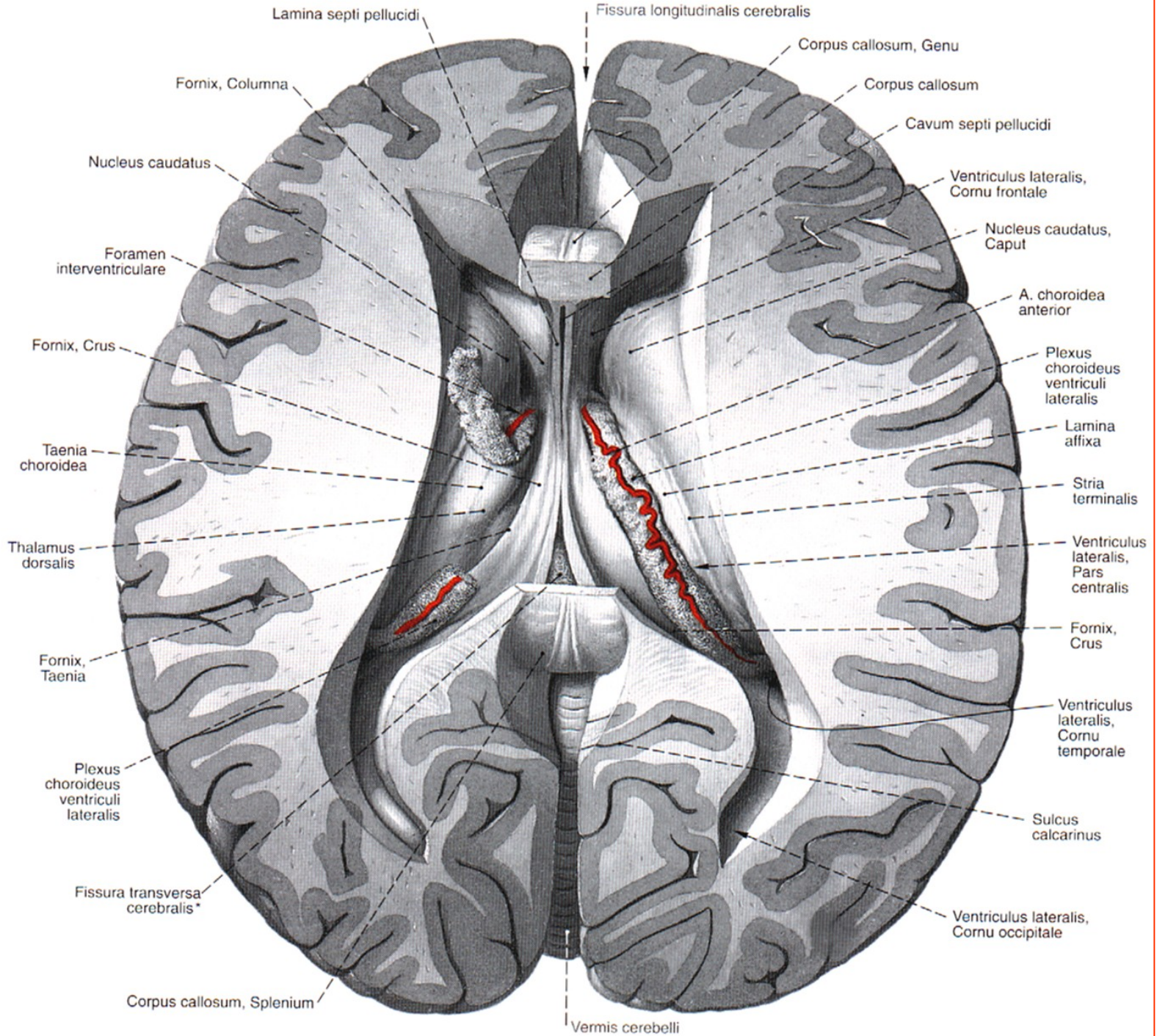
laterální průhled zleva



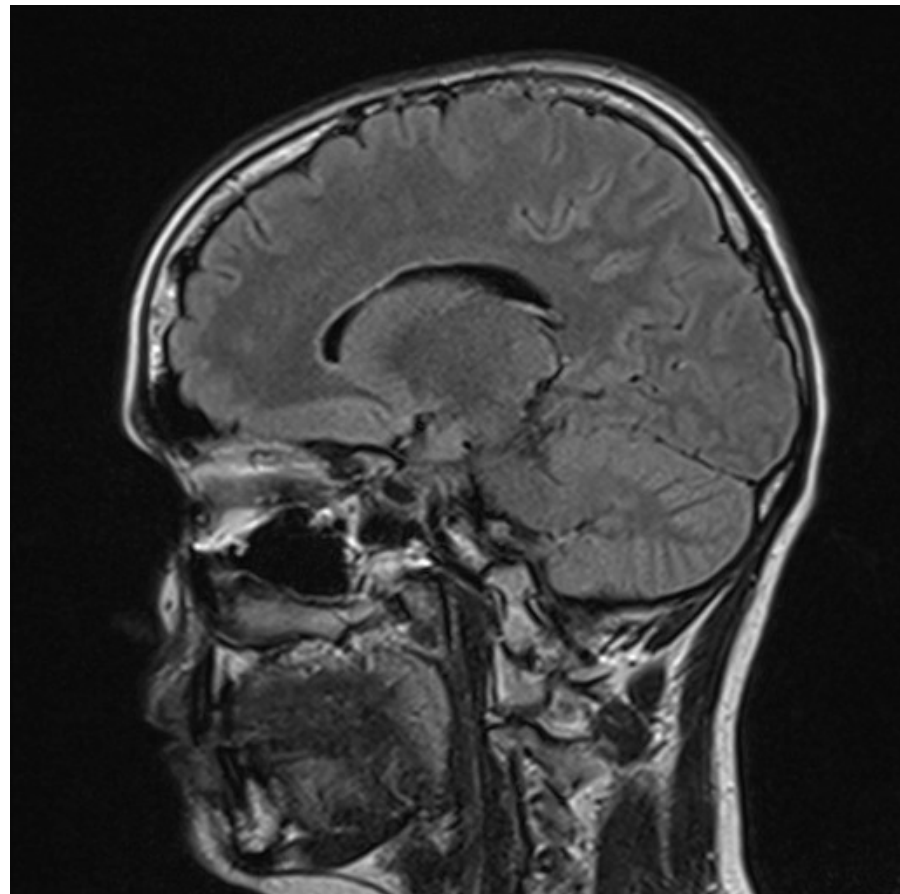
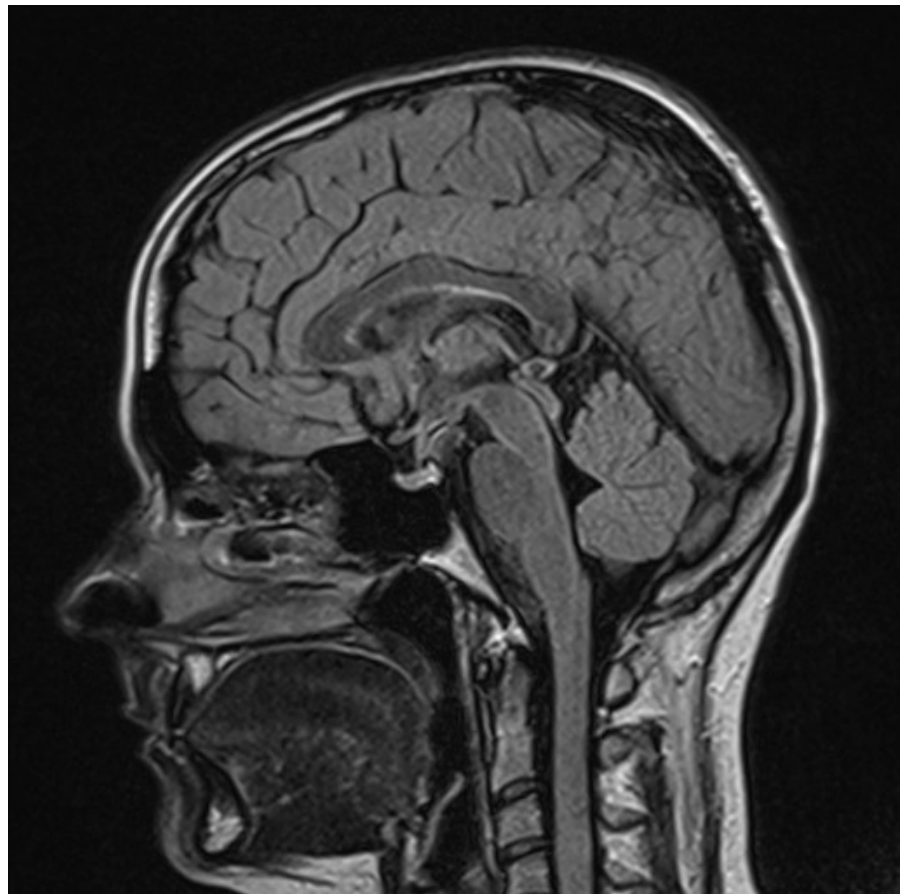




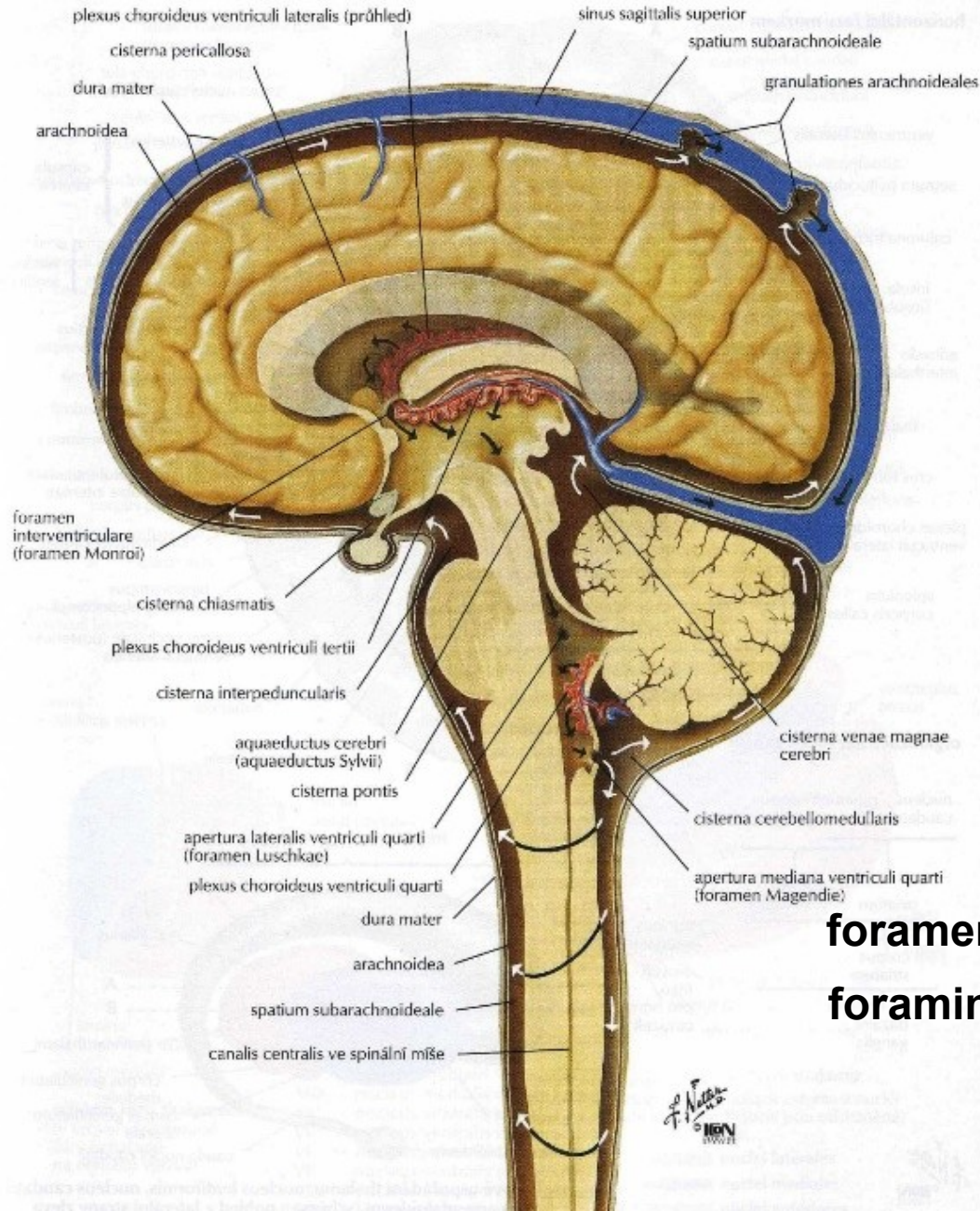




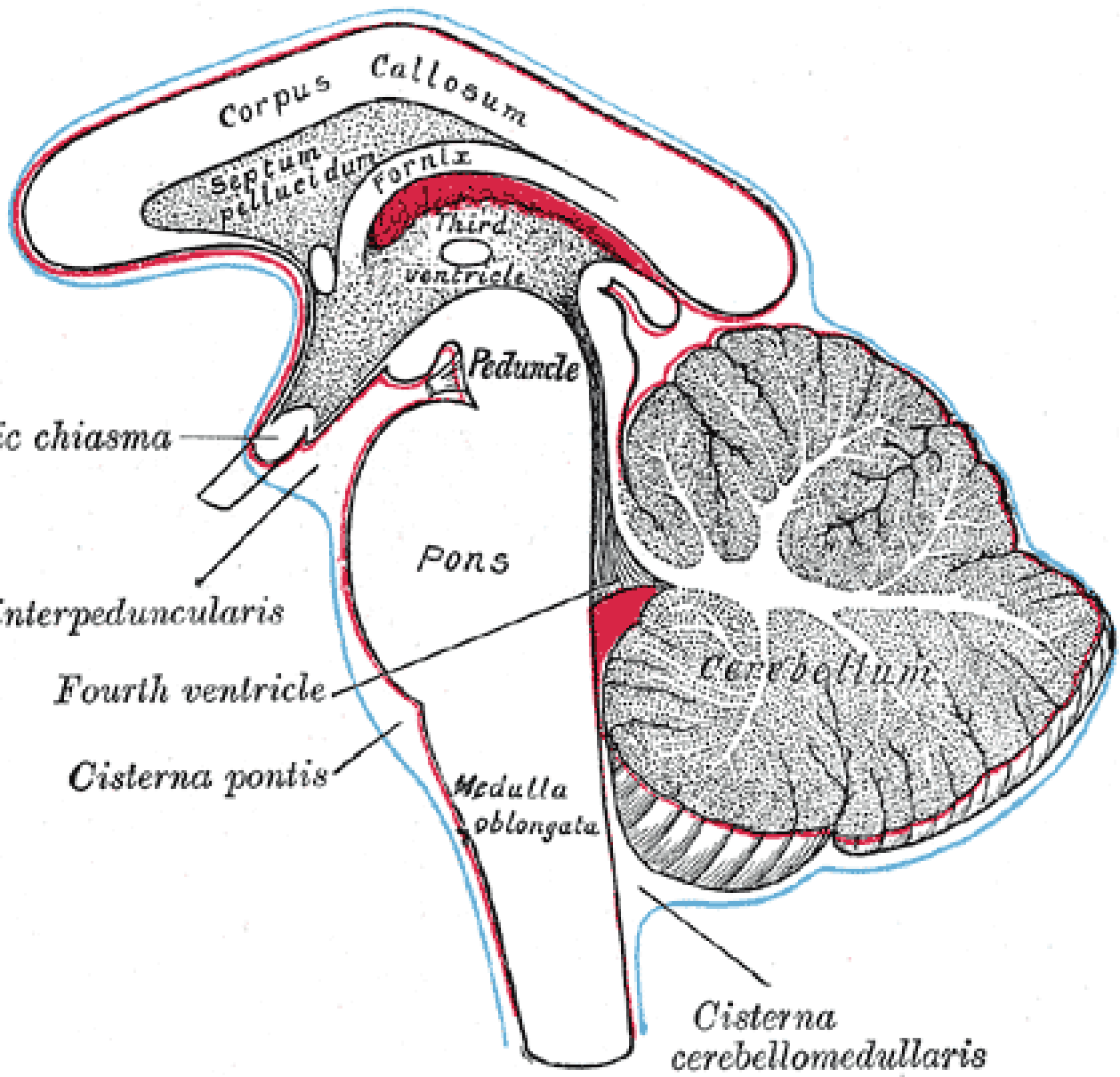
CT vyšetření



Cirkulace mozkomíšního moku



foramen Magendie
foramina Luschkae



Corpus Callosum

Septum pellucidum

Fornix

Third ventricle

Peduncle

Optic chiasma

Pons

Cisterna interpeduncularis

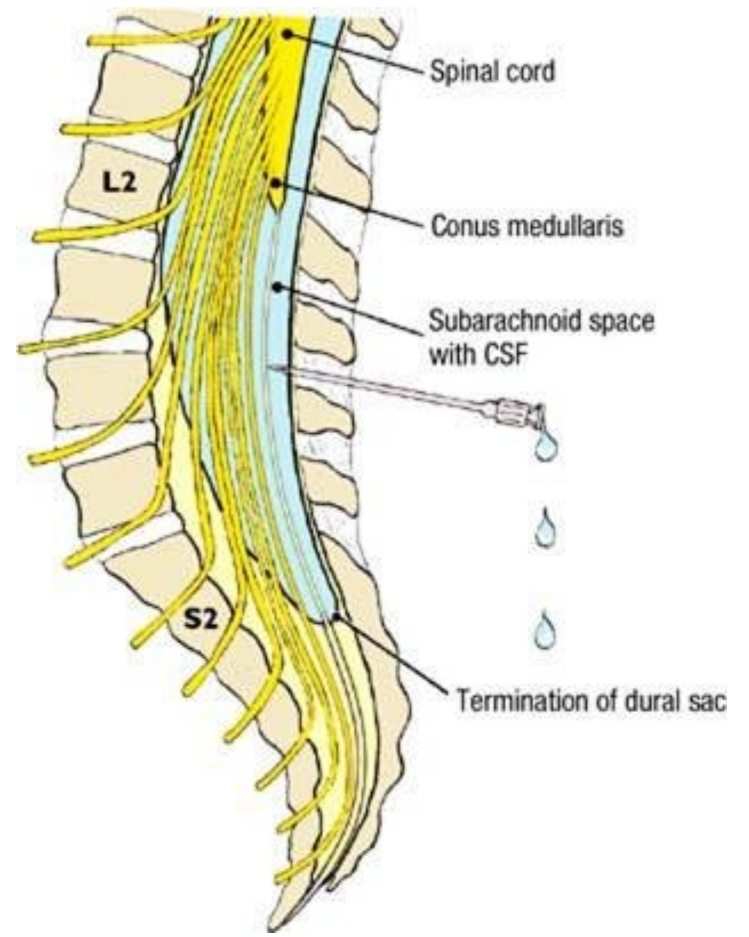
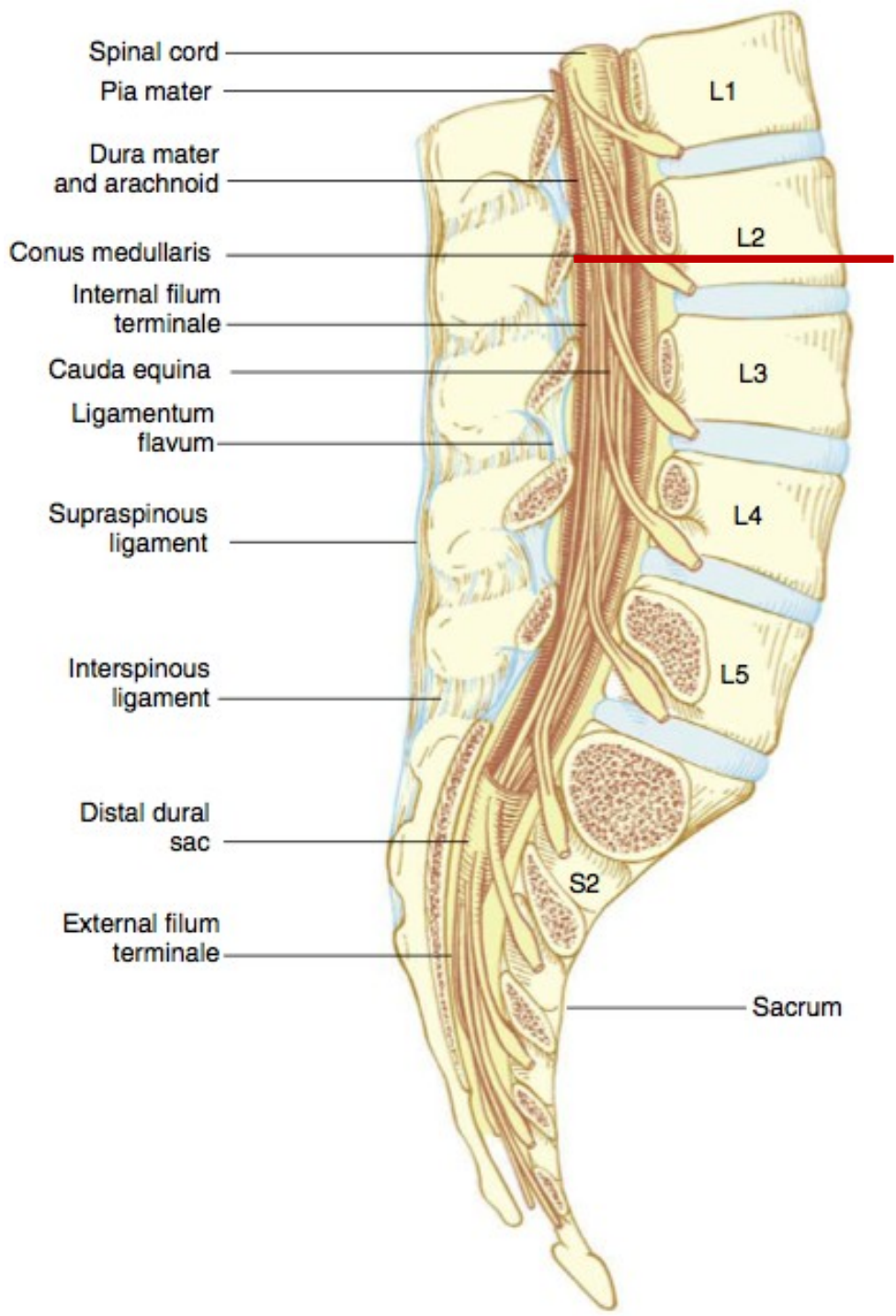
Fourth ventricle

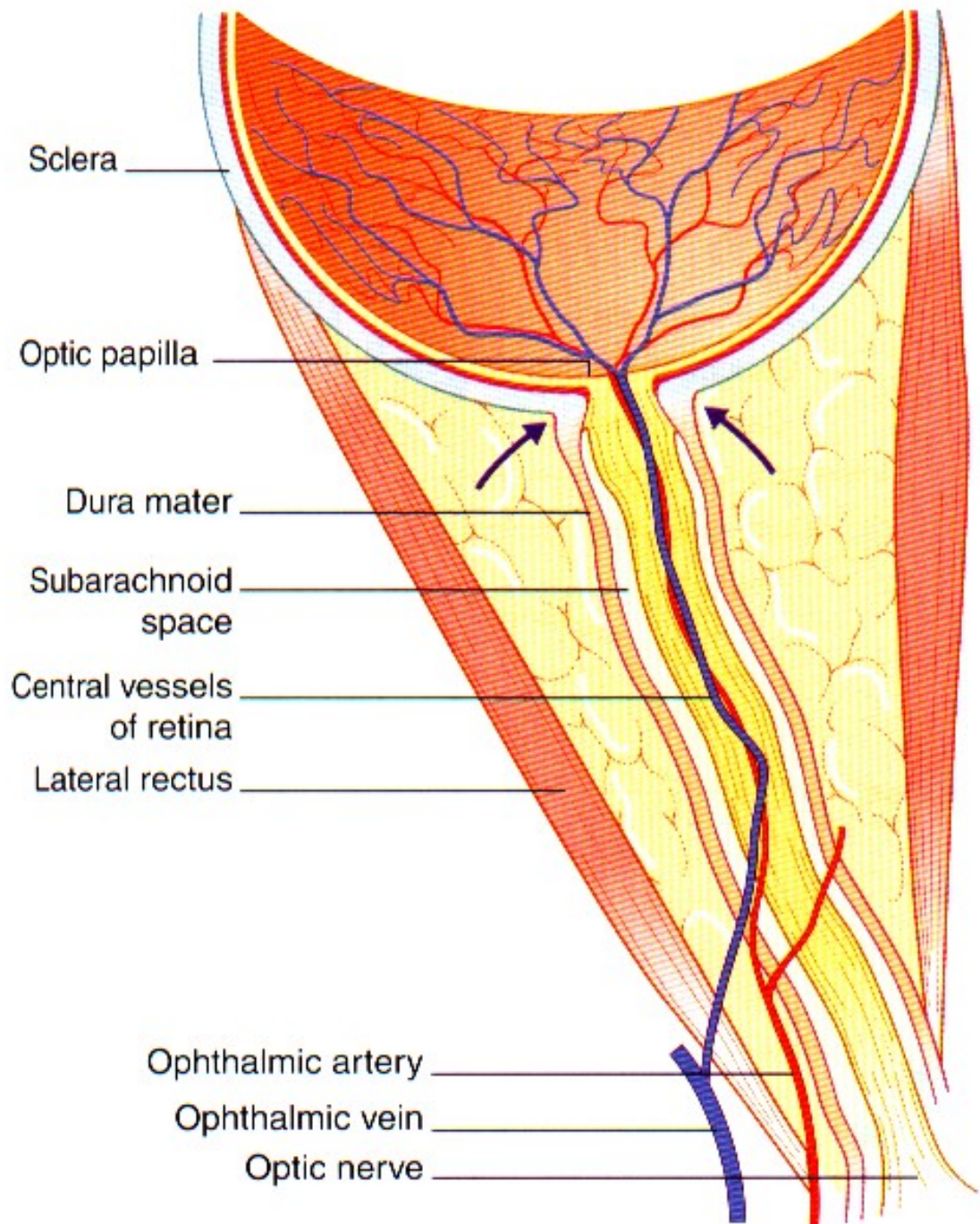
Cisterna pontis

Medulla oblongata

Cerebellum

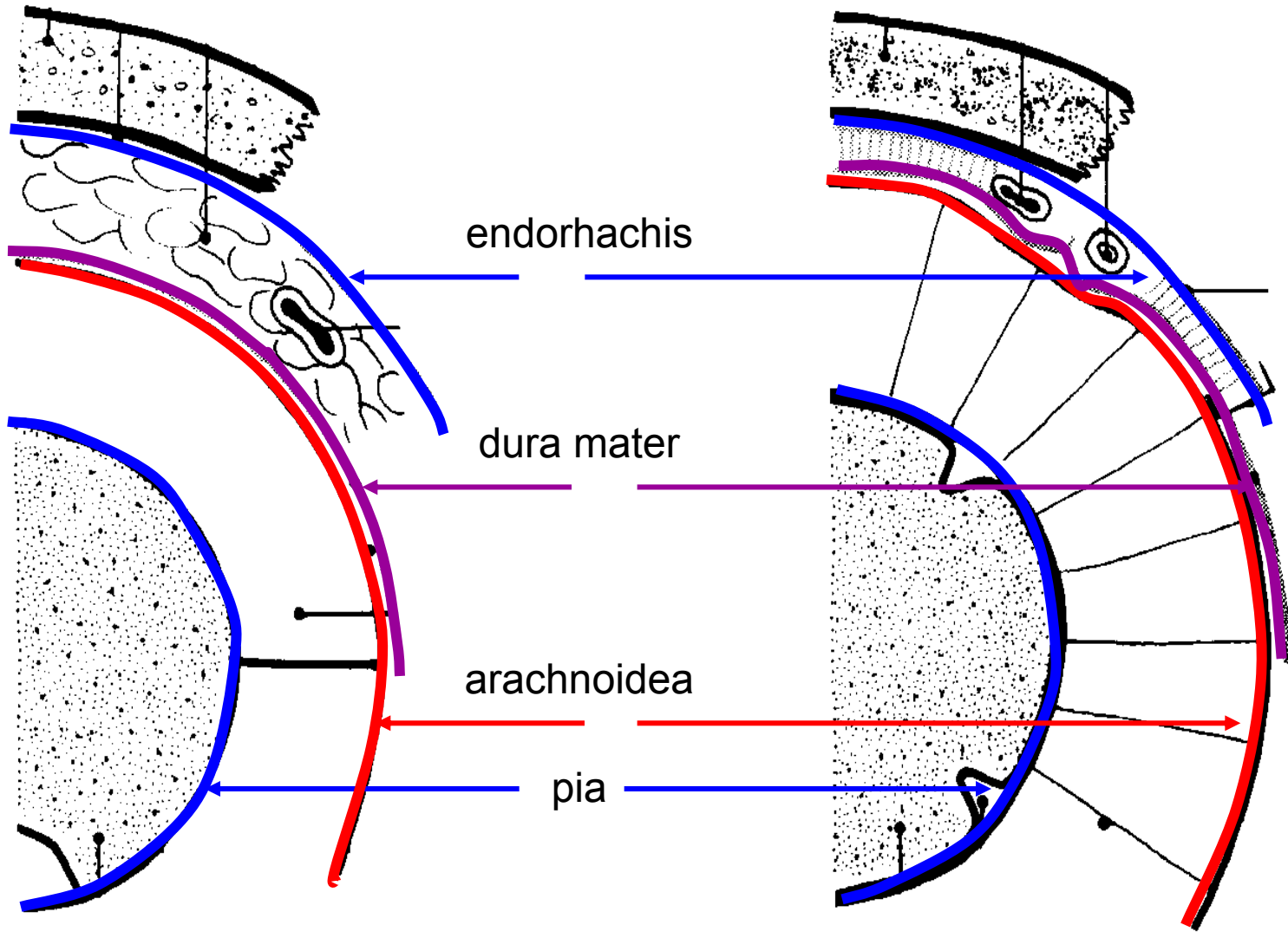
Cisterna cerebellomedullaris

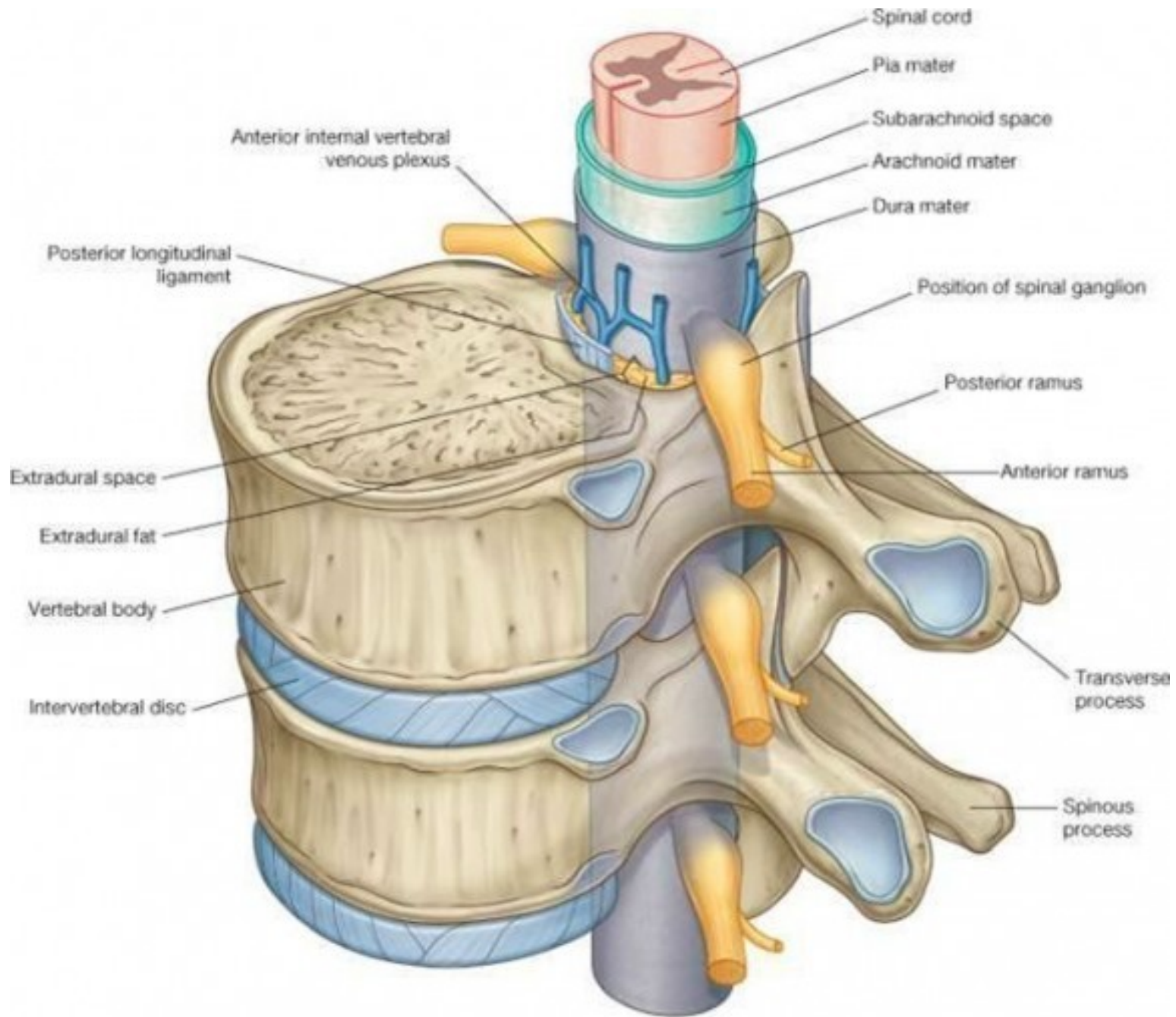


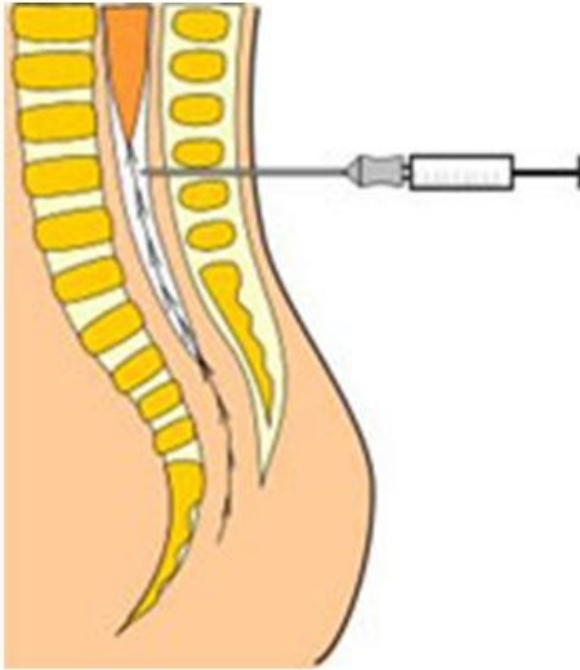


**zvýšený tlak CST podél n. opticus –
komprese v. centralis retinae –
papilledema, papilární edém**

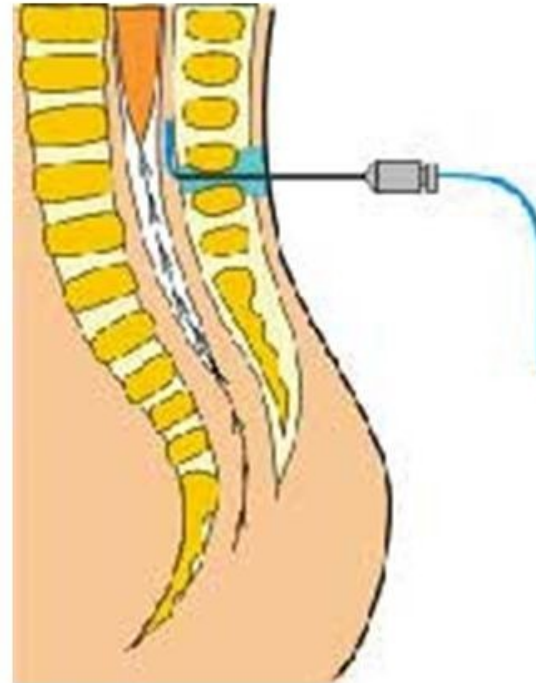
Obaly CNS





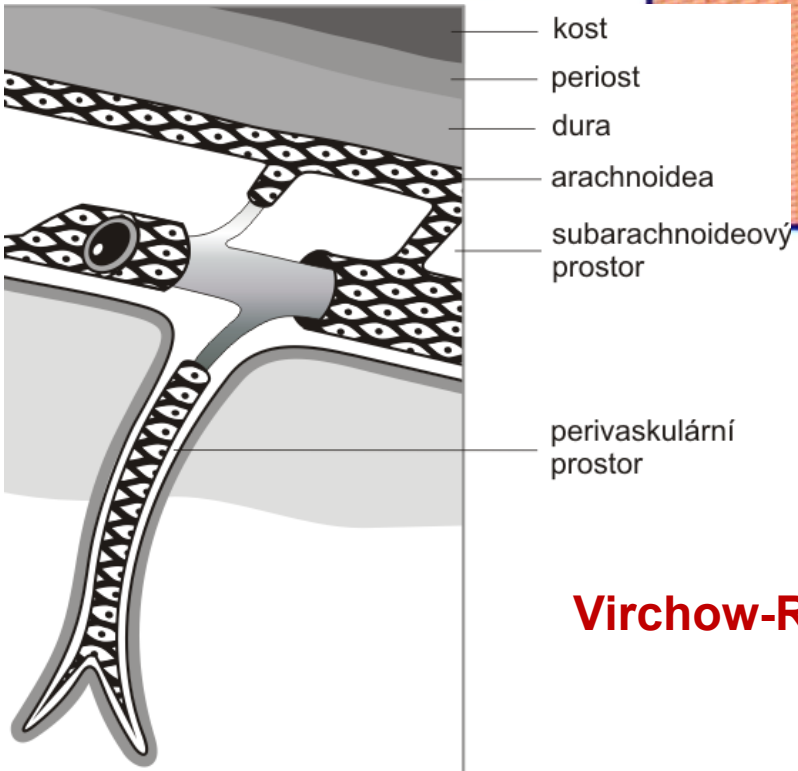
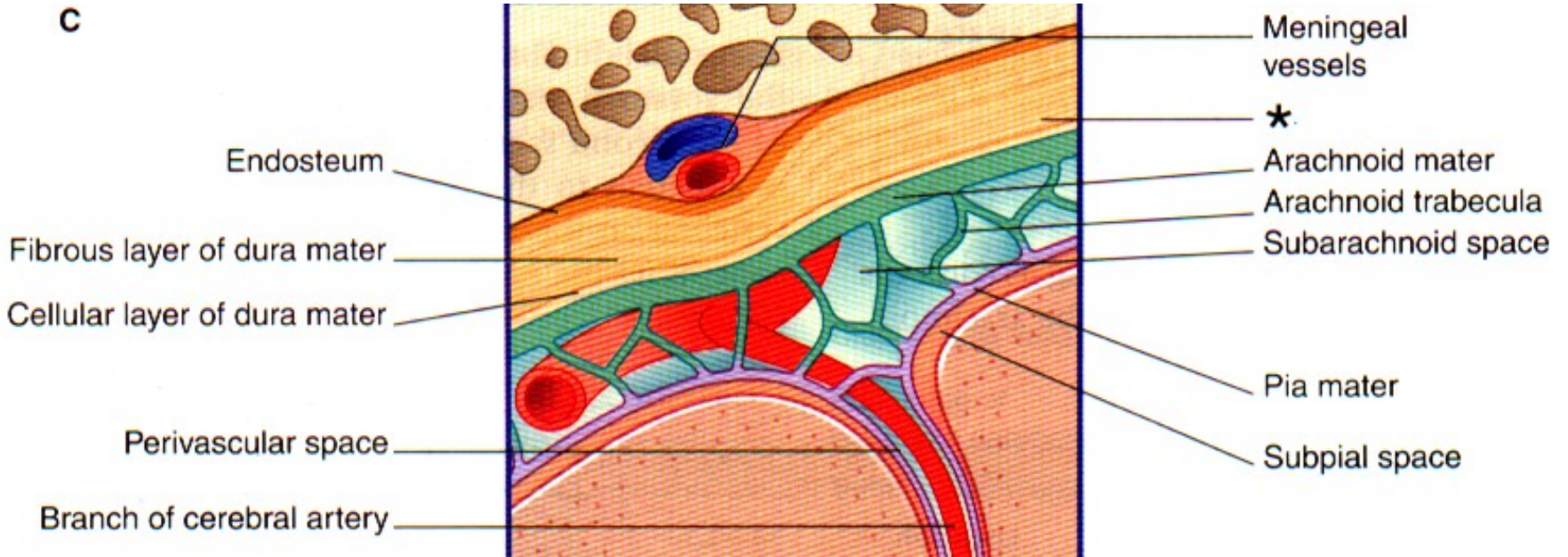


- subarachnoidální anestézie
= „spinál“



- epidurální anestézie
= „epidurál“

C

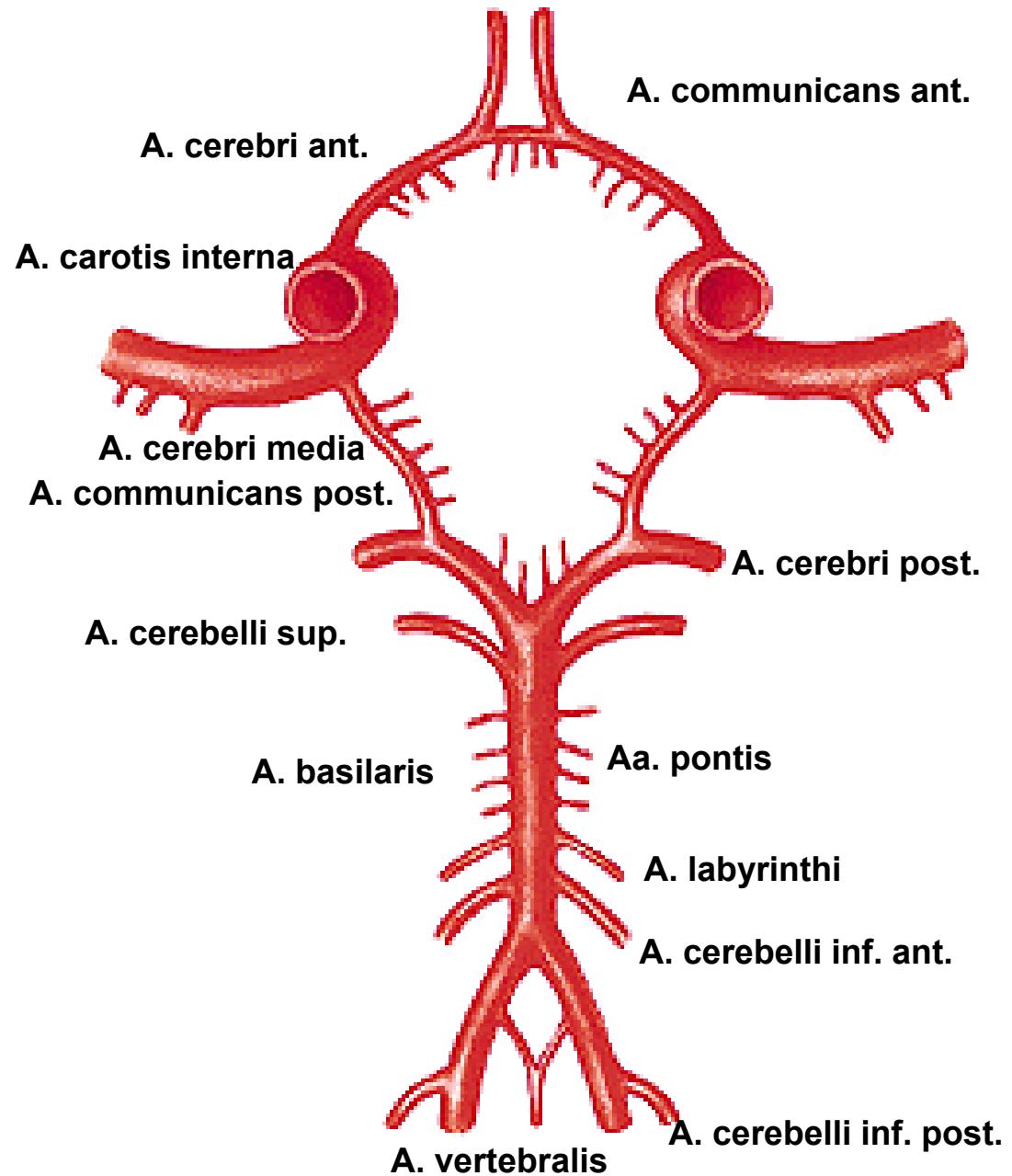
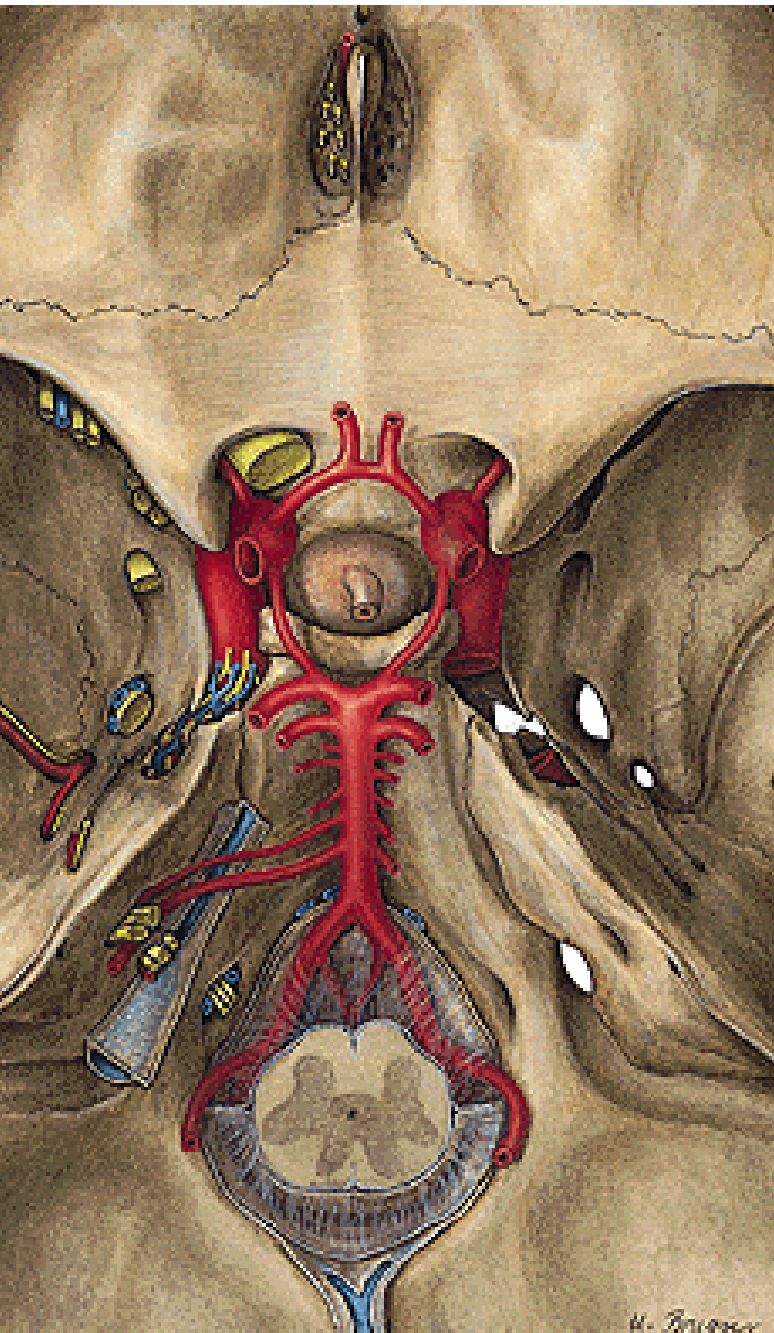


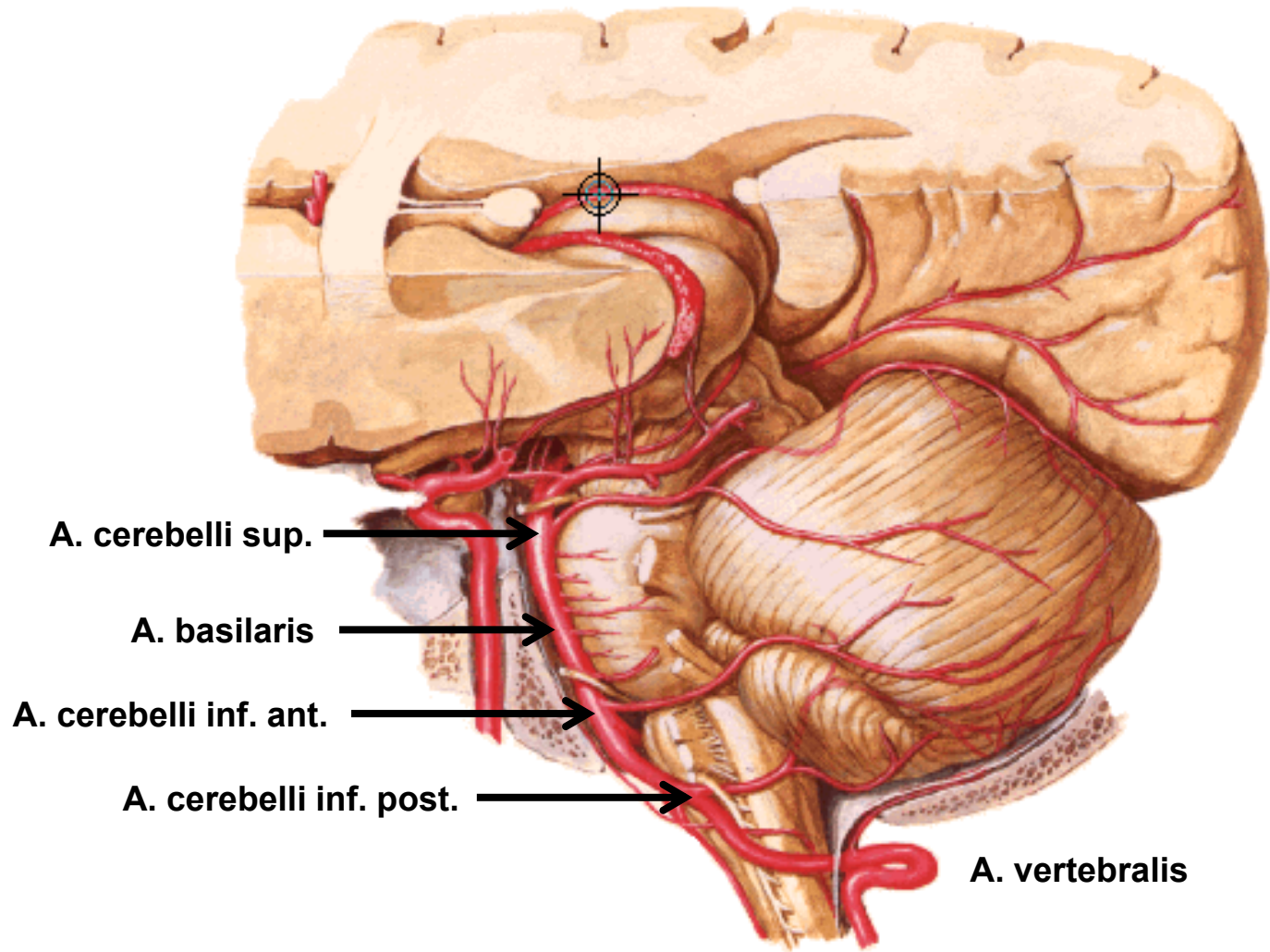
Virchow-Robinův perivaskulární prostor

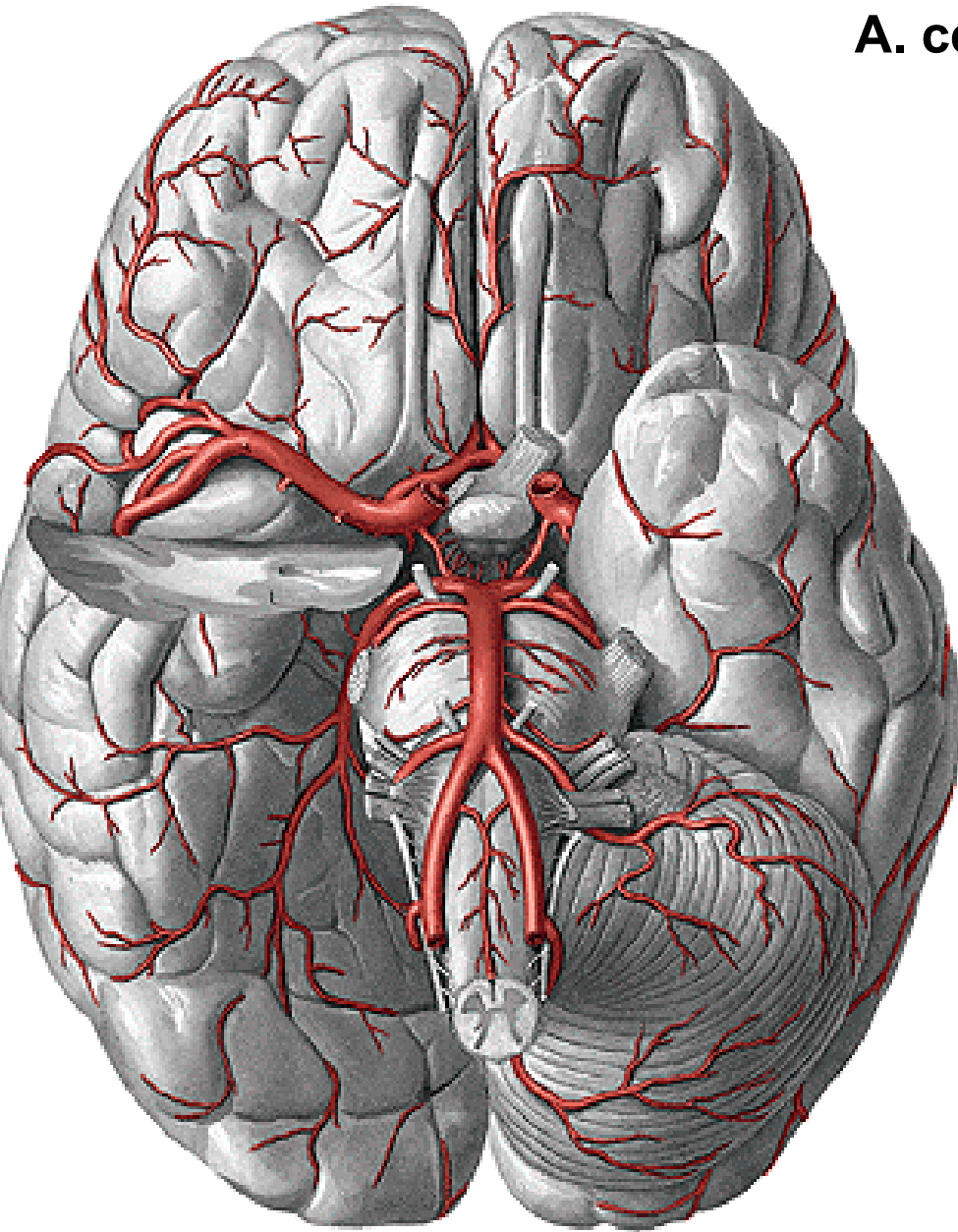
Deriváty dura mater



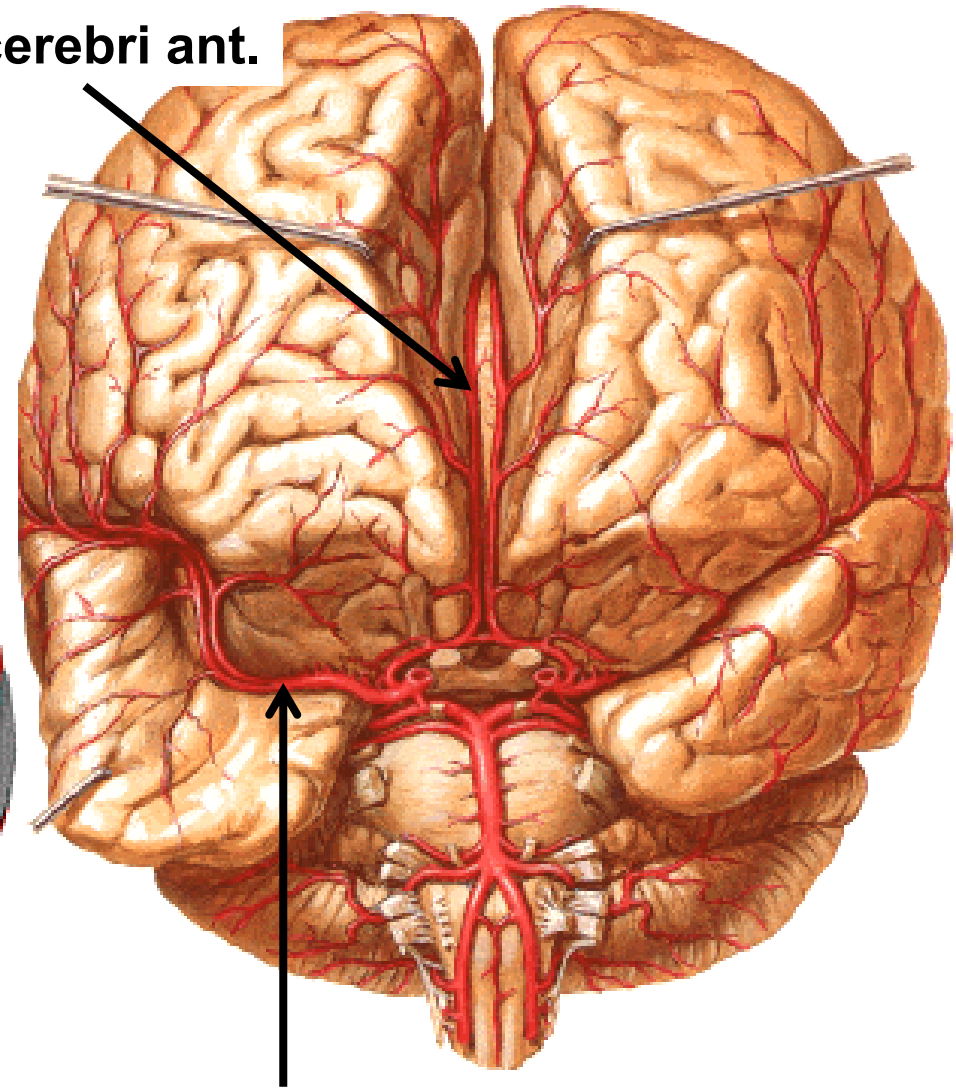
Circulus arteriosus cerebri (Willis)



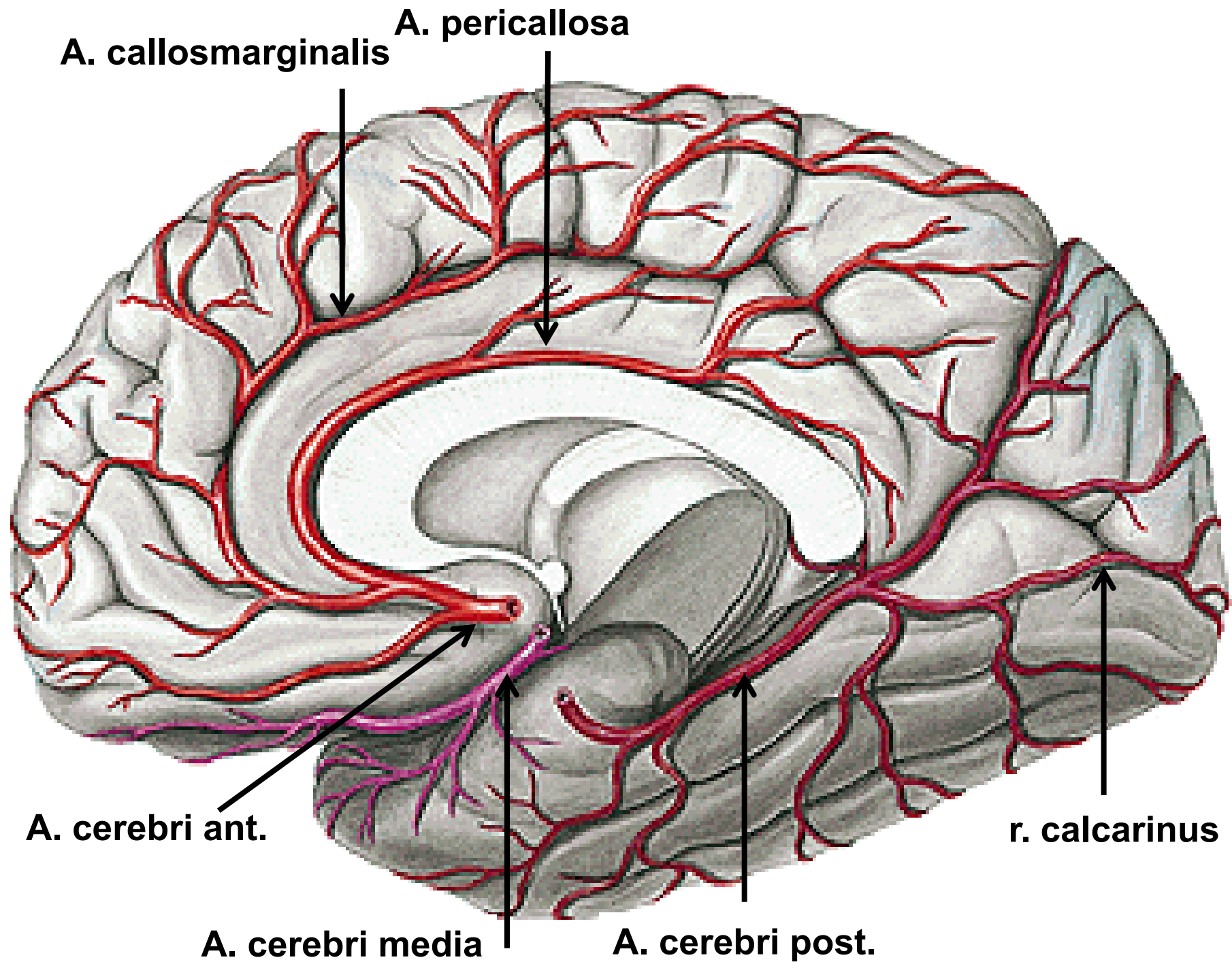




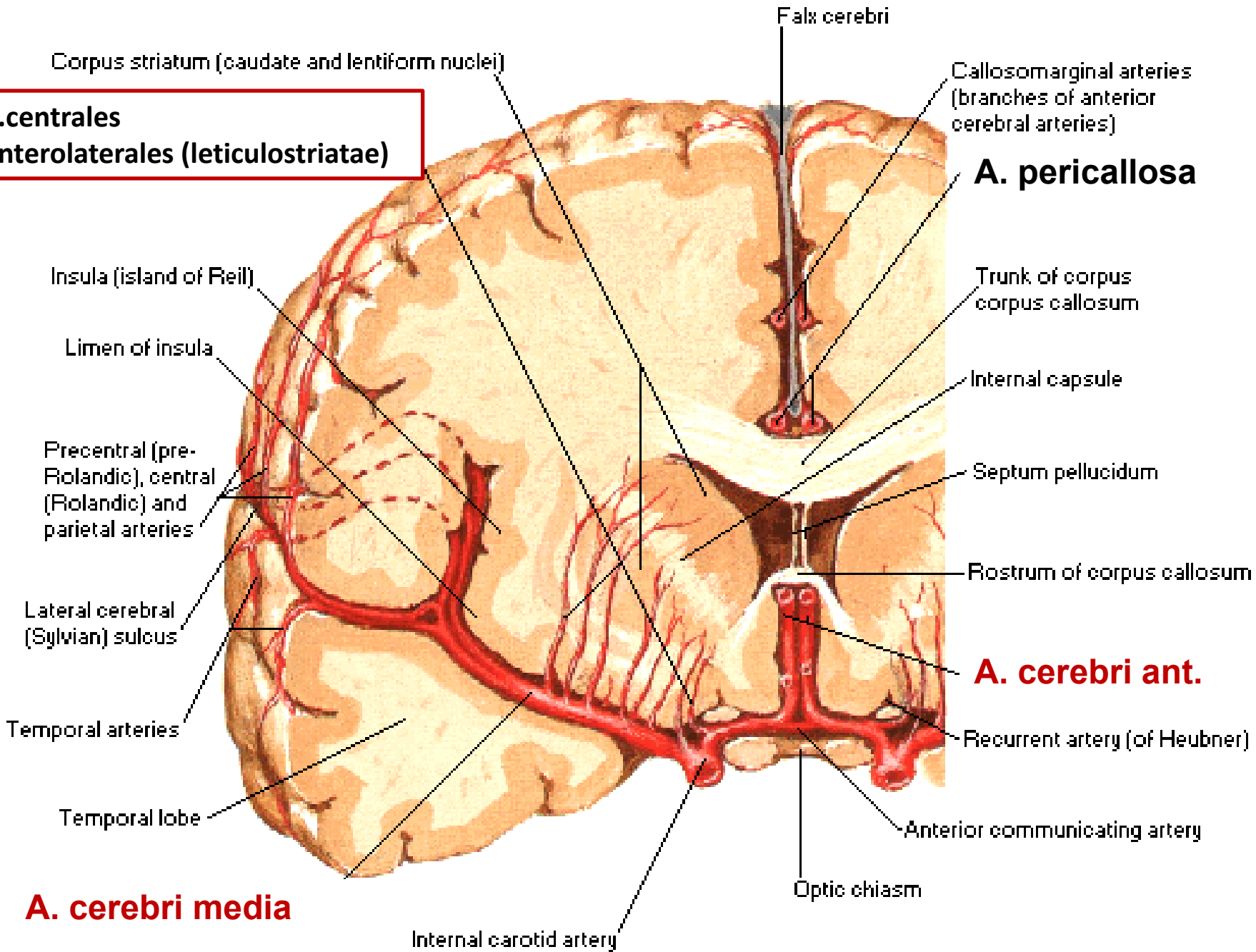
A. cerebri ant.



A. cerebri media



**a.centrales
anterolaterales (leticulostriatæ)**



Corpus striatum (caudate and lentiform nuclei)

Falx cerebri

Callosomarginal arteries
(branches of anterior cerebral arteries)

A. pericallosa

Trunk of corpus
corpus callosum

Internal capsule

Septum pellucidum

Rostrum of corpus callosum

A. cerebri ant.

Recurrent artery (of Heubner)

Anterior communicating artery

Optic chiasm

Internal carotid artery

Insula (island of Reil)

Limen of insula

Precentral (pre-Rolandic), central (Rolandic) and parietal arteries

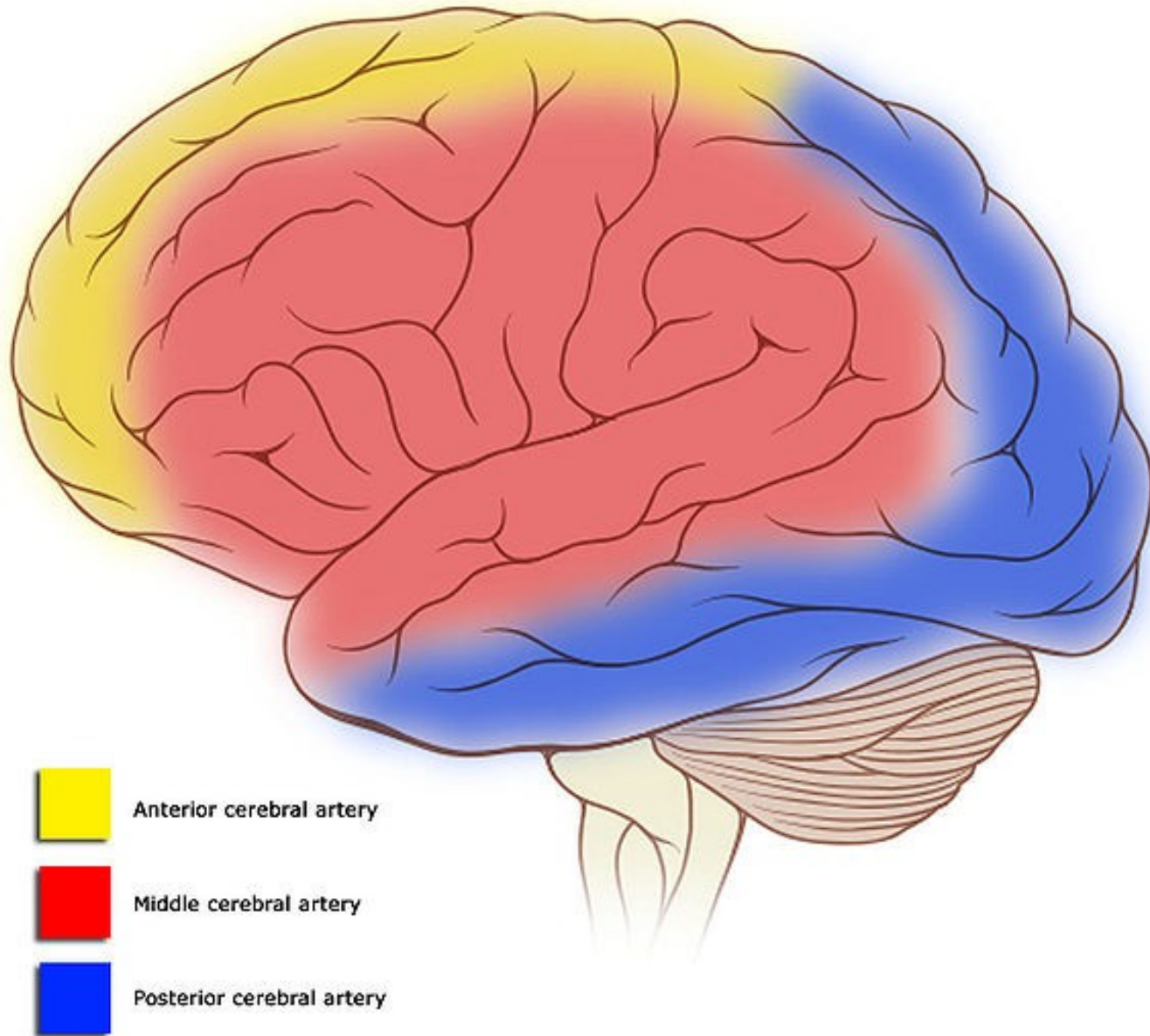
Lateral cerebral (Sylvian) sulcus

Temporal arteries

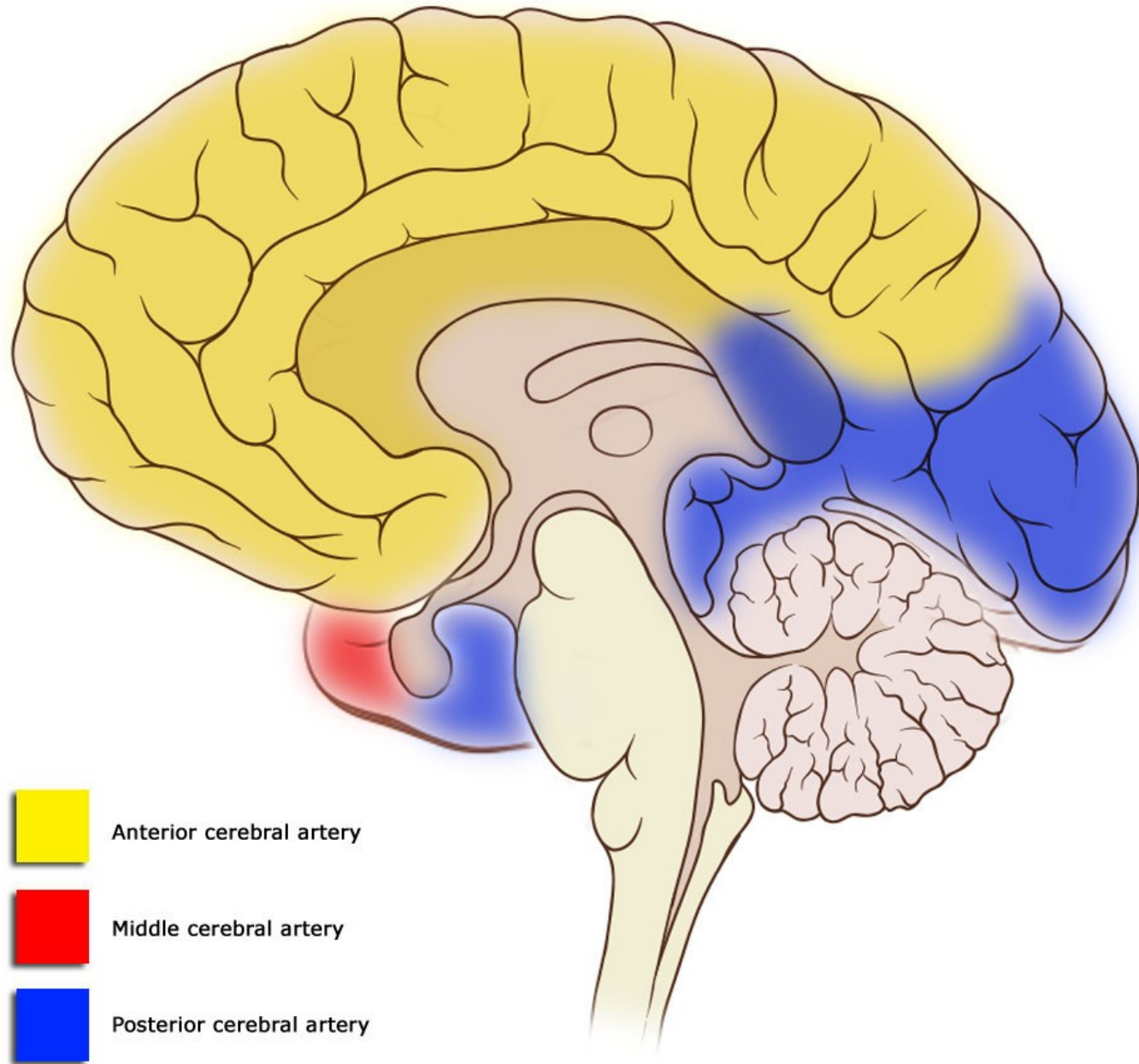
Temporal lobe

A. cerebri media

Cortical vascular territories



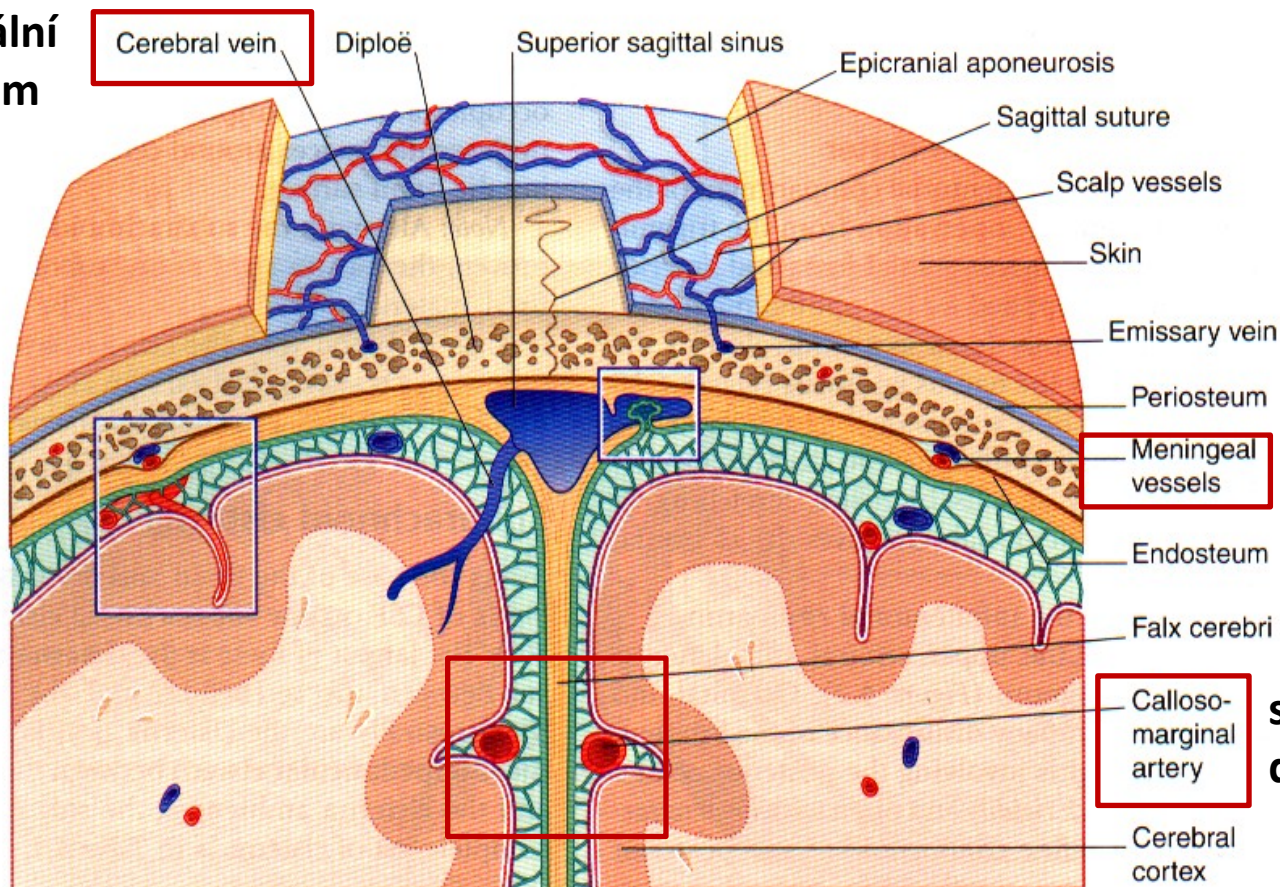
Cortical vascular territories



Krvácení

subdurální
hematom

A



epidurální
hematom

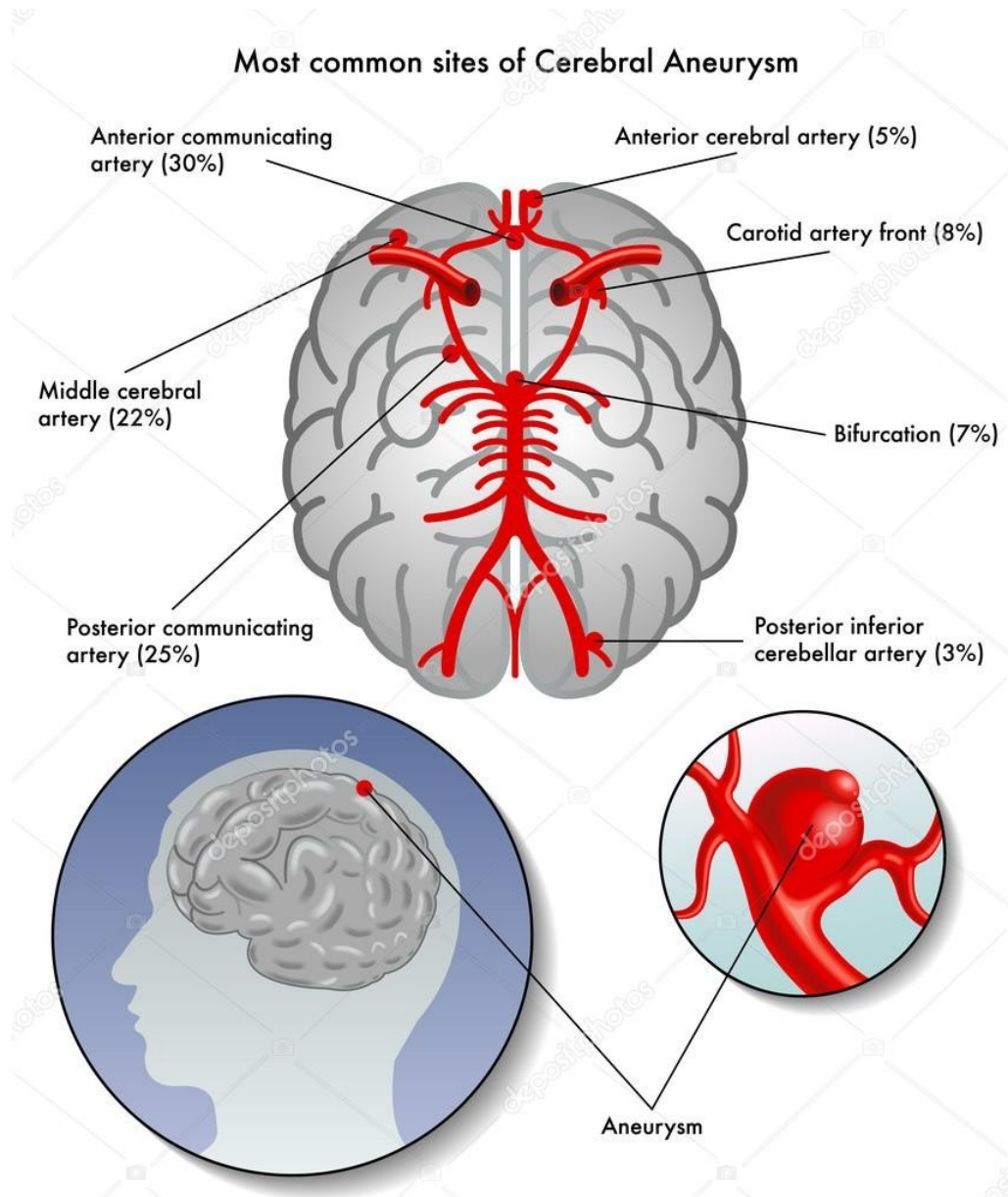
subarachnoi-
deální krvácení

epidurální hematom – do potencionálního epidurálního prostoru při traumatu hlavy, krvácení z r. anterior nebo posterior z *a. meningeae media*

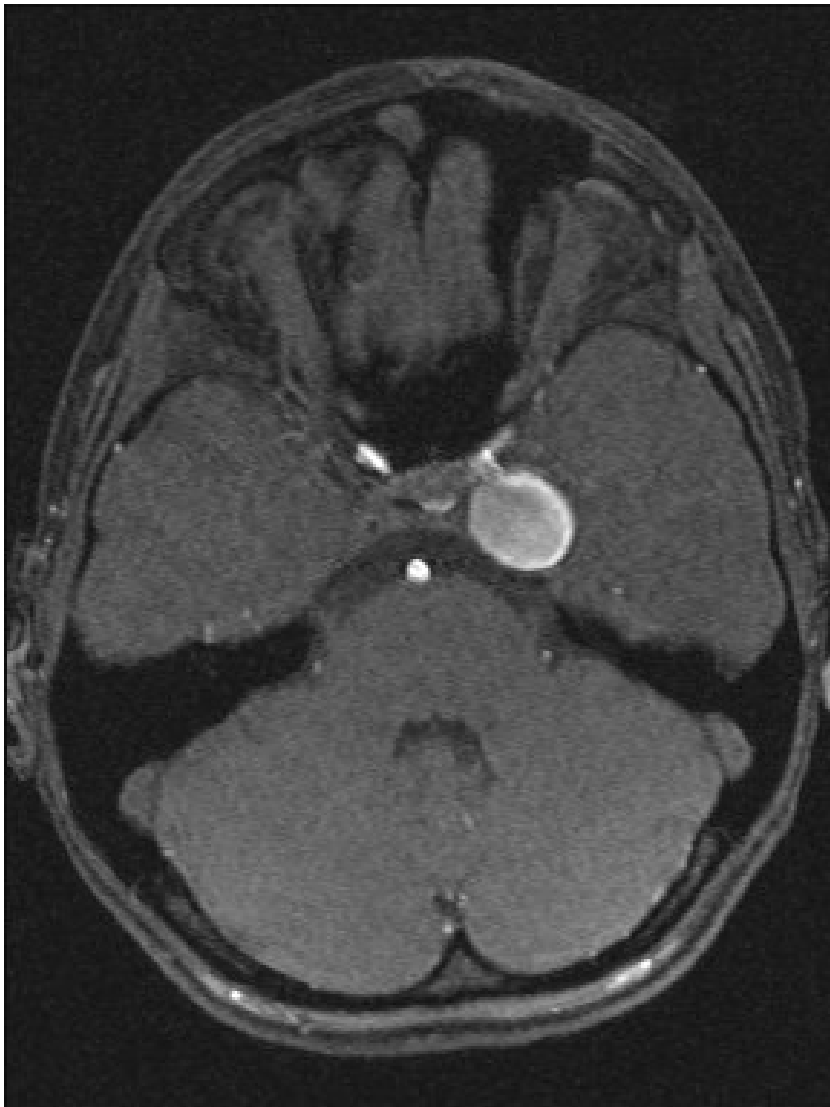
subdurální hematom – vzniká z povrchových cerebrálních vén, které procházejí do sinus sagittalis sup.

subarachnoideální krvácení - krvácení z cév z tepen Willisova okruhu - nejčastěji po prasknutí cévní výdutě (aneuryzmatu)

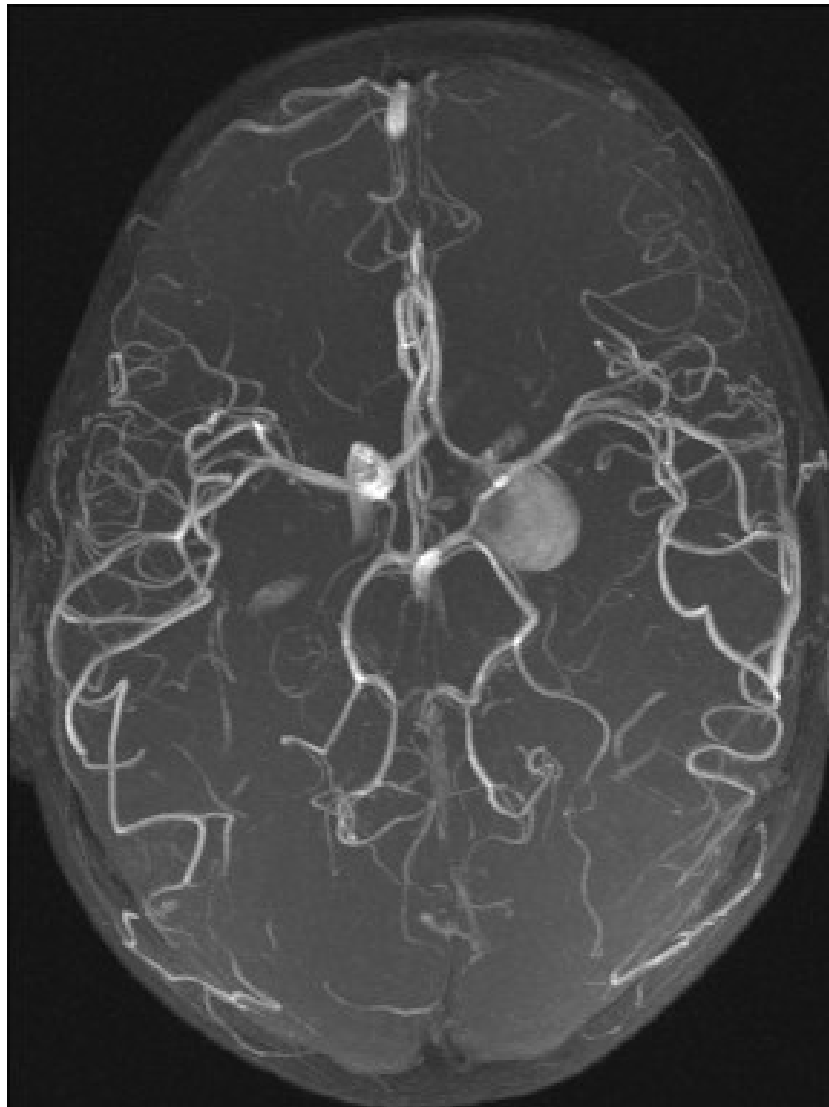
Subarachnoideální krvácení



Cévní zásobení mozku - aneurizma



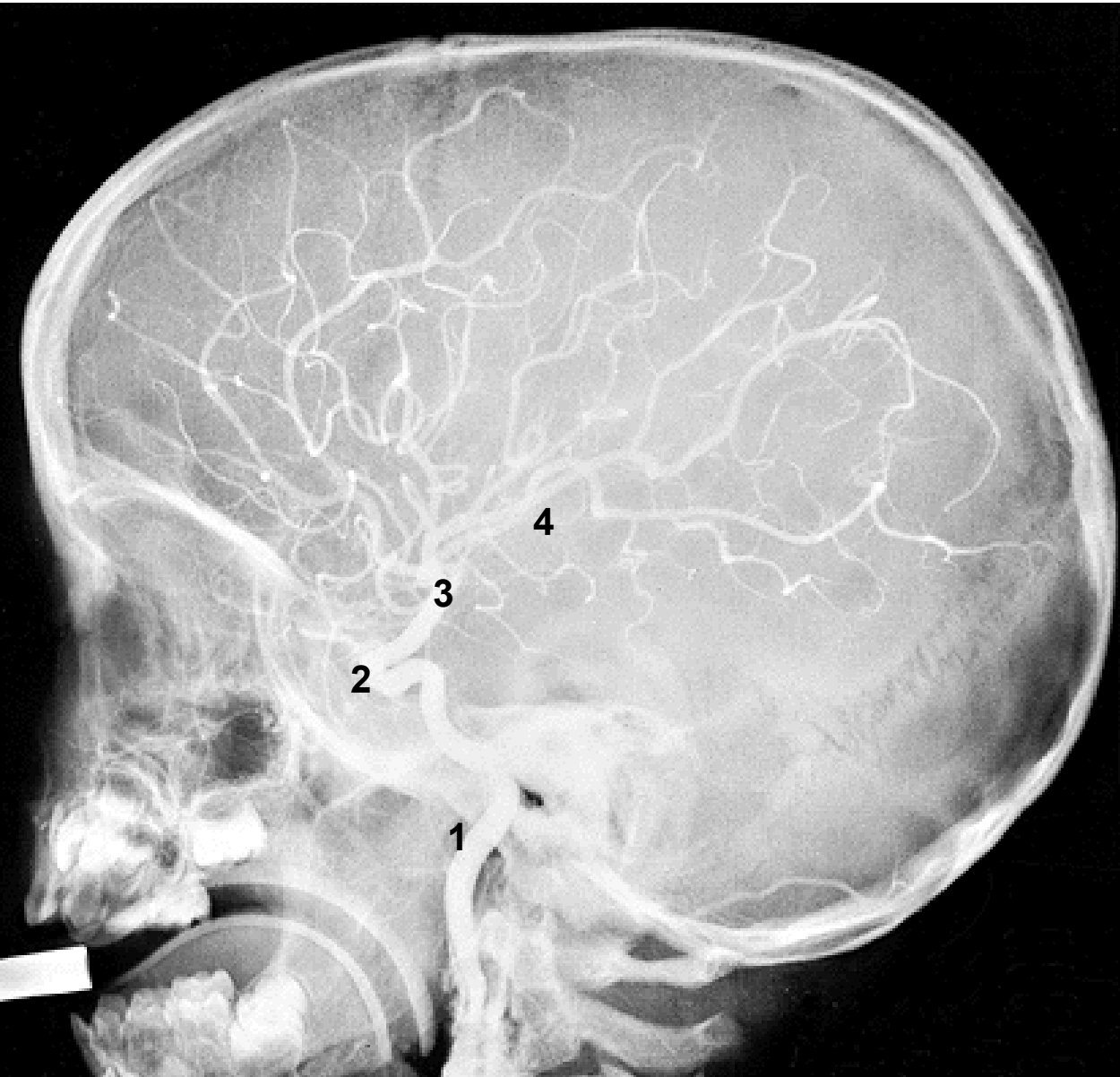
MR angiografie (MRA)



CT angiografie (CTA)

RTG snímek hlavy dítěte v boční projekci

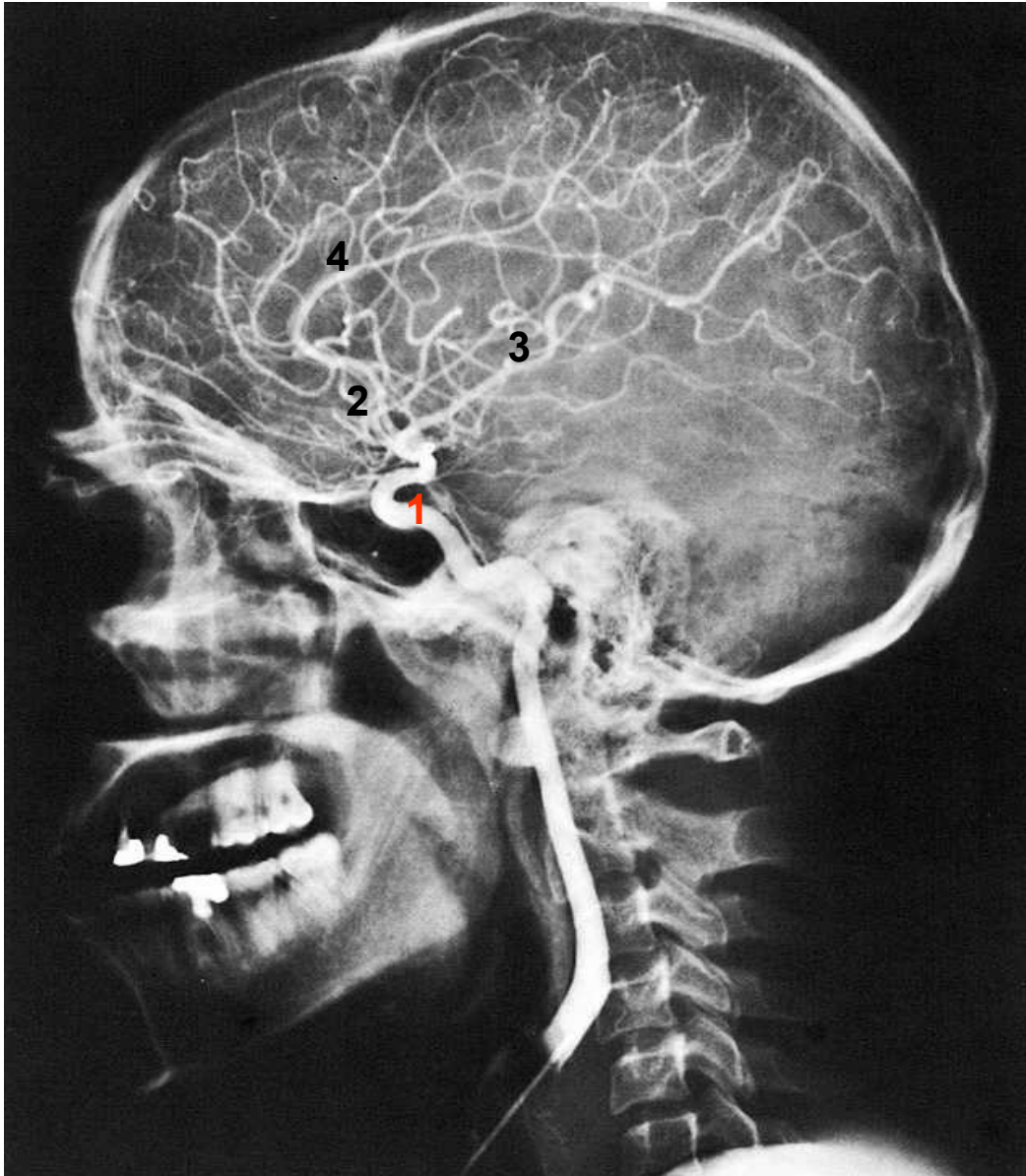
Angiografie = kontrastní vyšetření mozkových cév, větvení a. carotis interna



1. A.carotis interna
2. Karotický sifon
3. A.cerebri anterior
4. A.cerebri media

RTG snímek hlavy v boční projekci

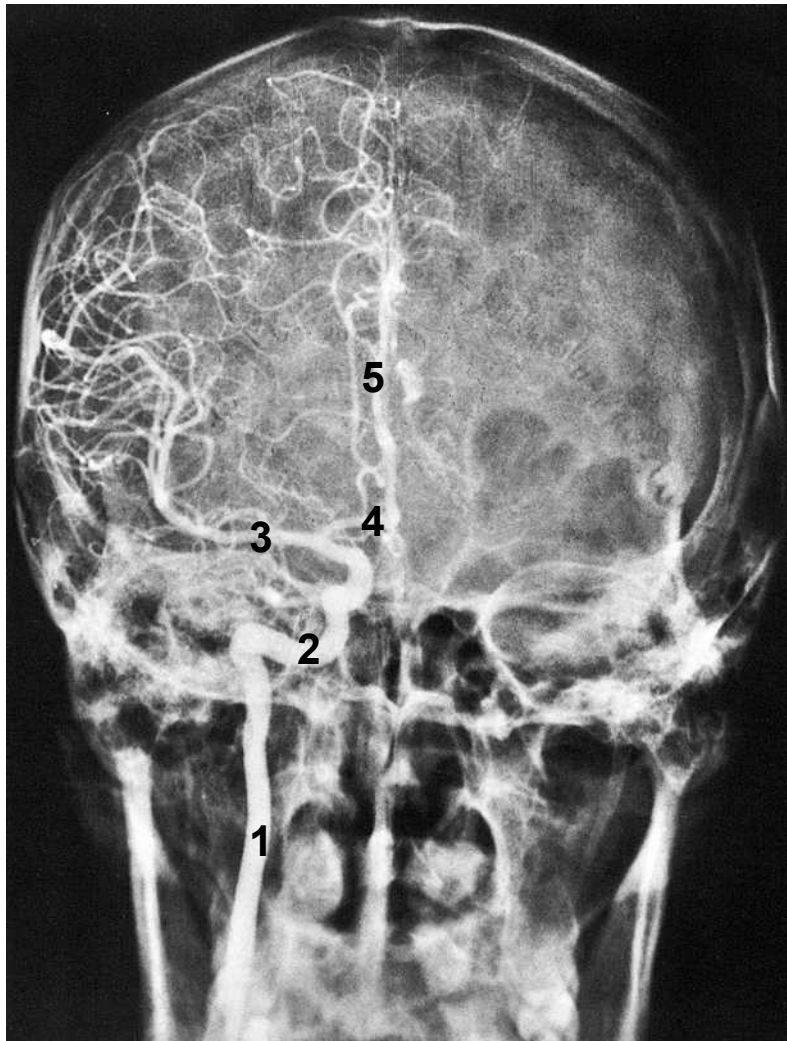
Angiografie - větvení a.carotis interna



1. karotický sifon
2. a.cerebri anterior
3. a.cerebri media
4. a.pericallosa

RTG snímek hlavy v předozadní projekci

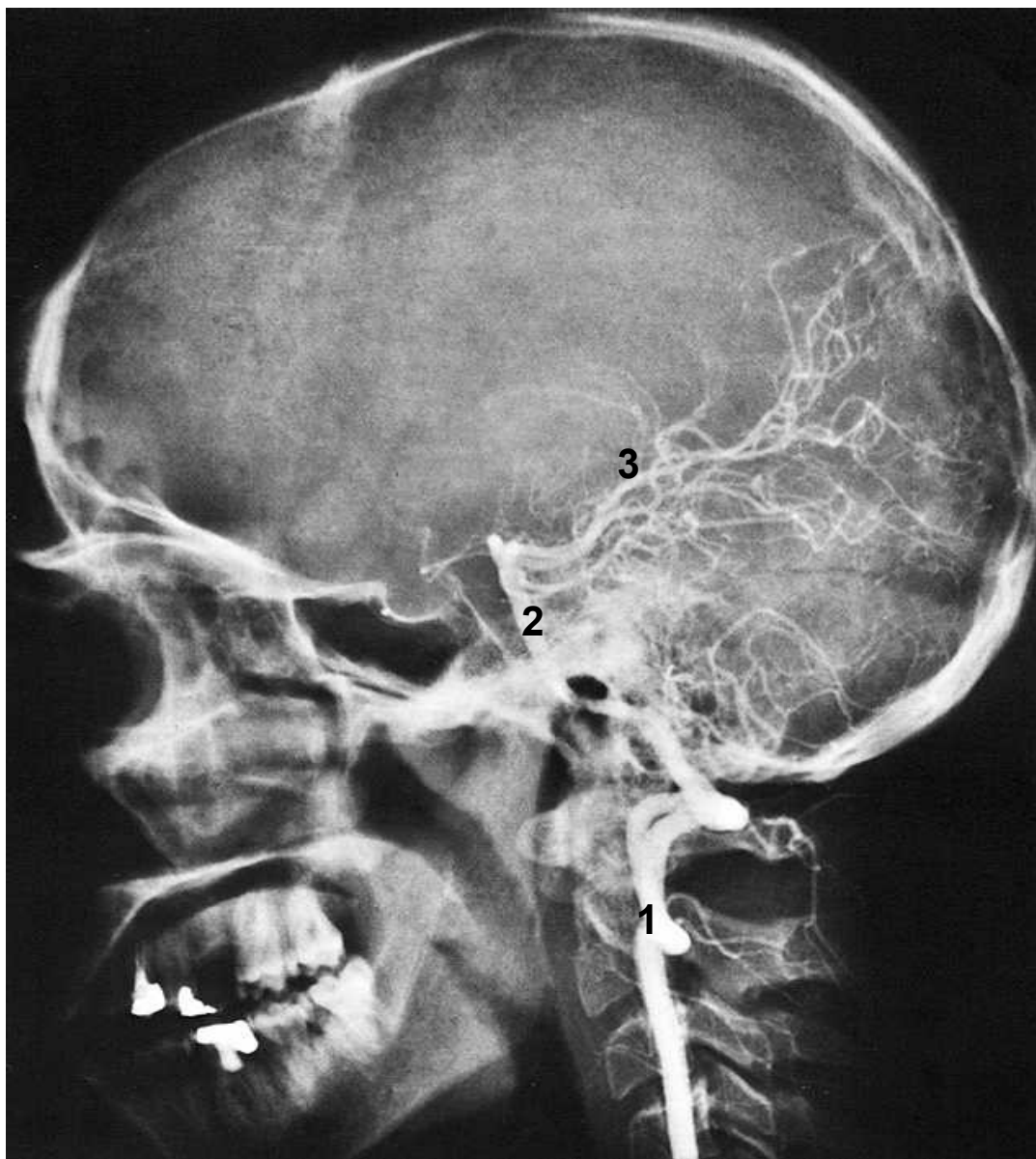
Angiografie - větvení a. carotis interna



1. a.carotis interna
2. karotický sifon
3. a.cerebri media
4. a.cerebri anterior
5. a.pericallosa

RTG snímek hlavy v boční projekci

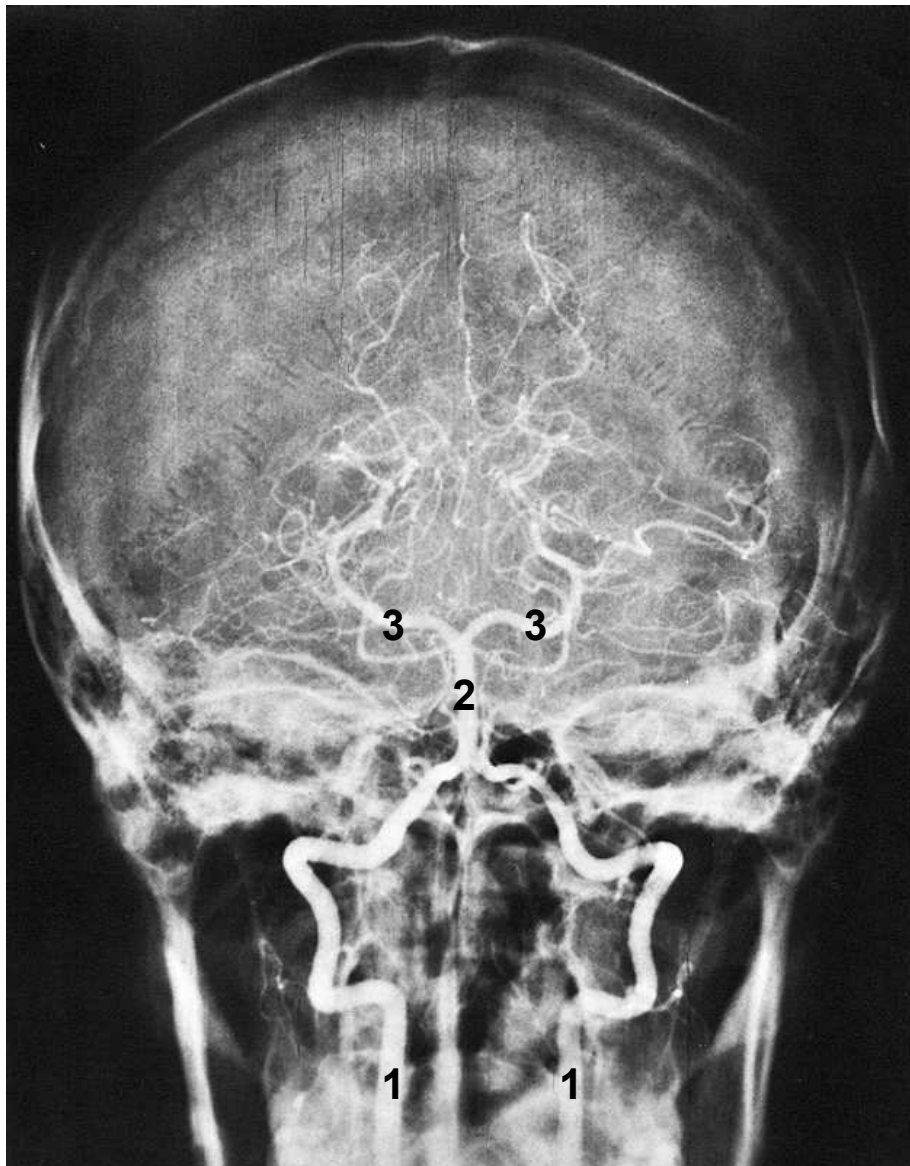
Angiografie - větvení a. vertebralis



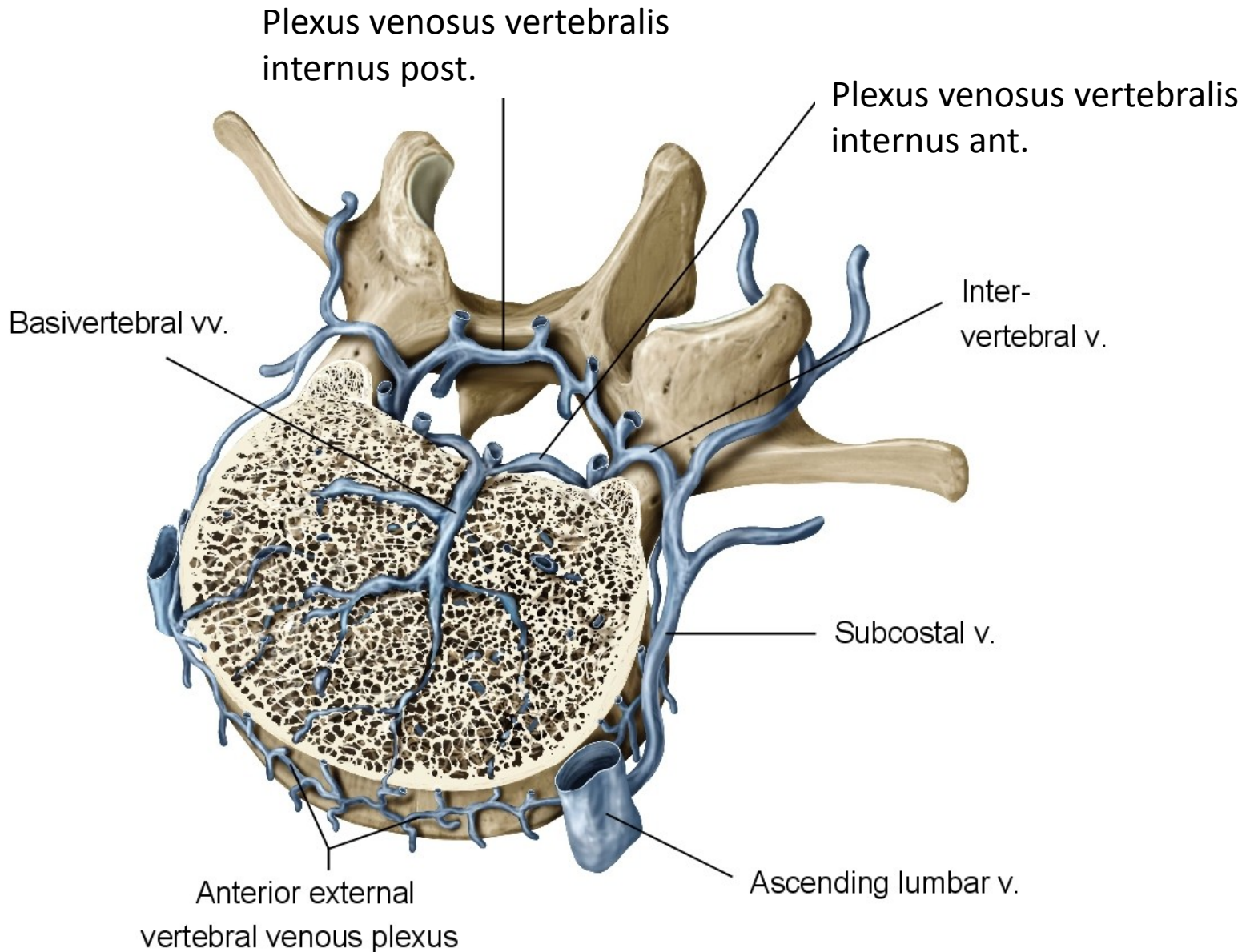
1. A.vertebralis
2. A.basilaris
3. A.cerebri posterior

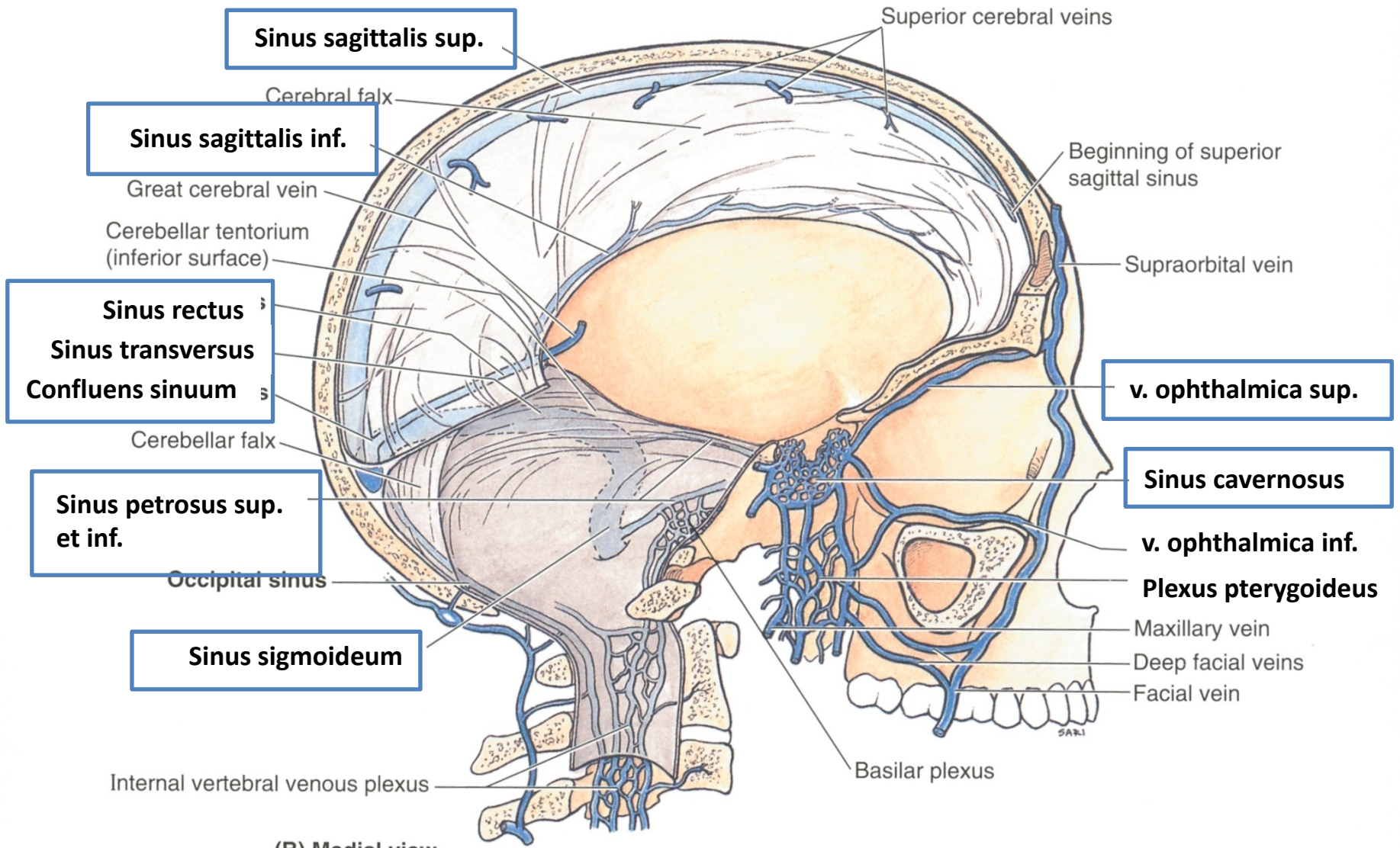
RTG snímek hlavy v předozadní projekci

Angiografie - větvení a.vertebralis

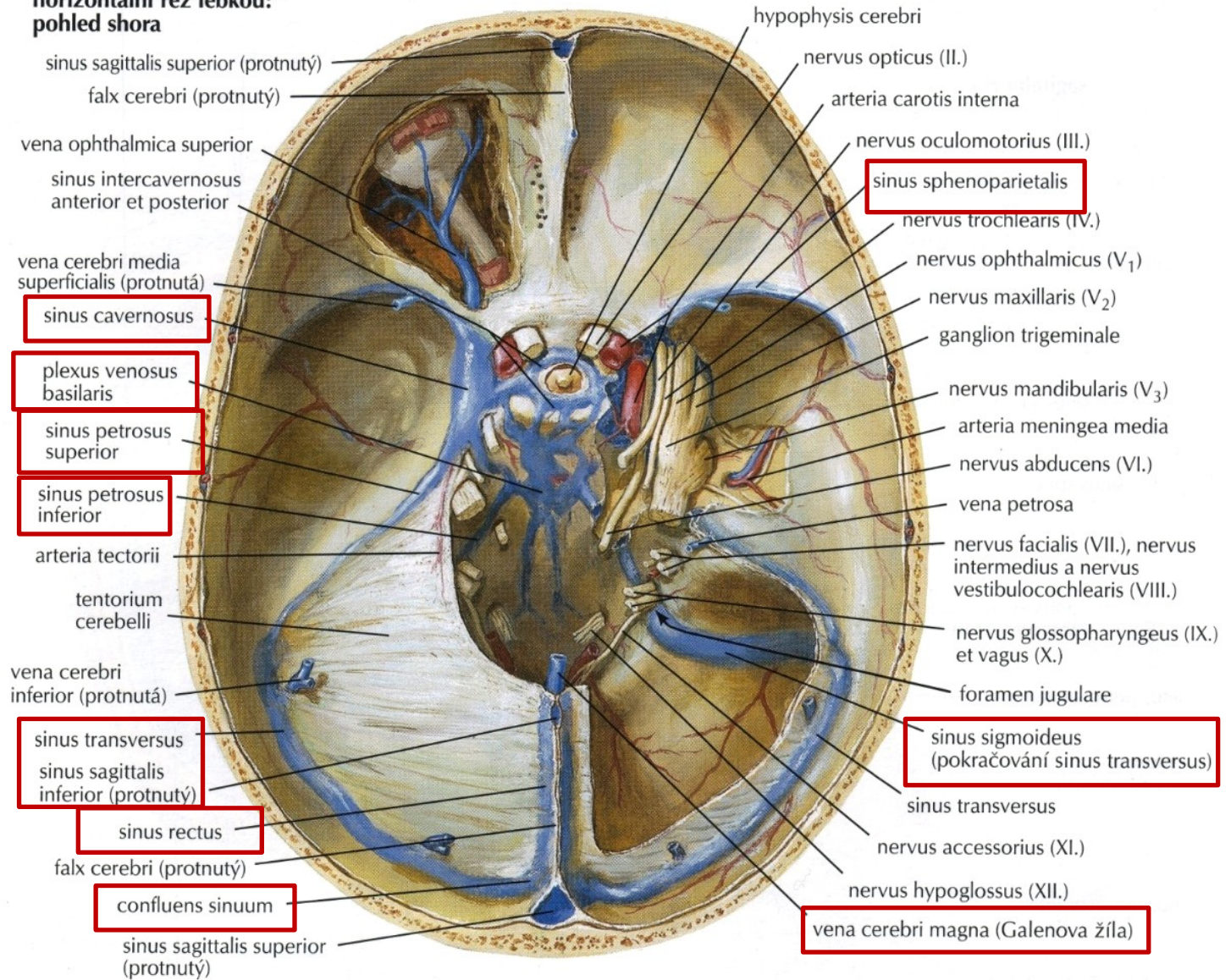


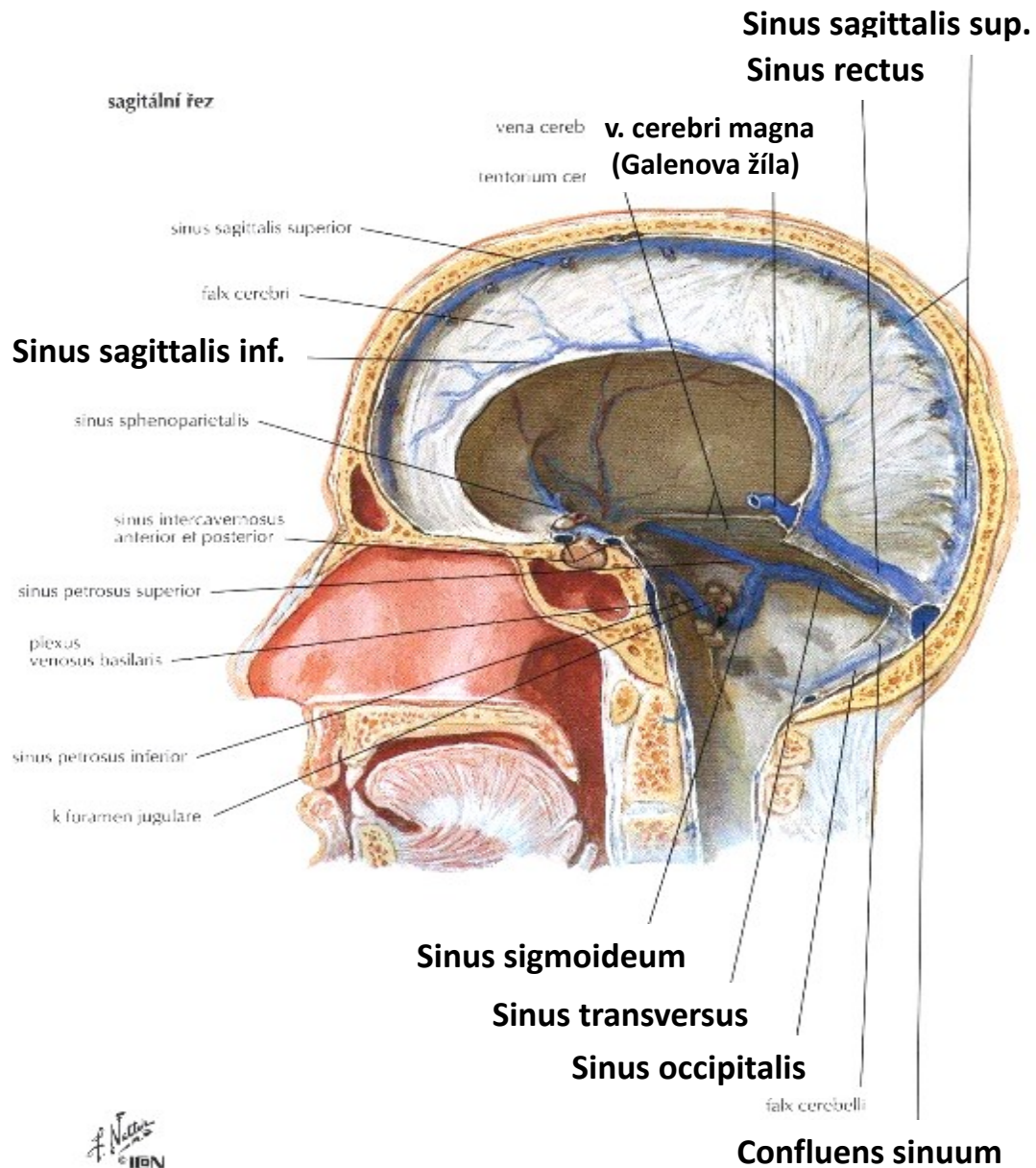
1. A.vertebralis dextra, sinistra
2. A.basilaris
3. Aa.cerebri posteriores

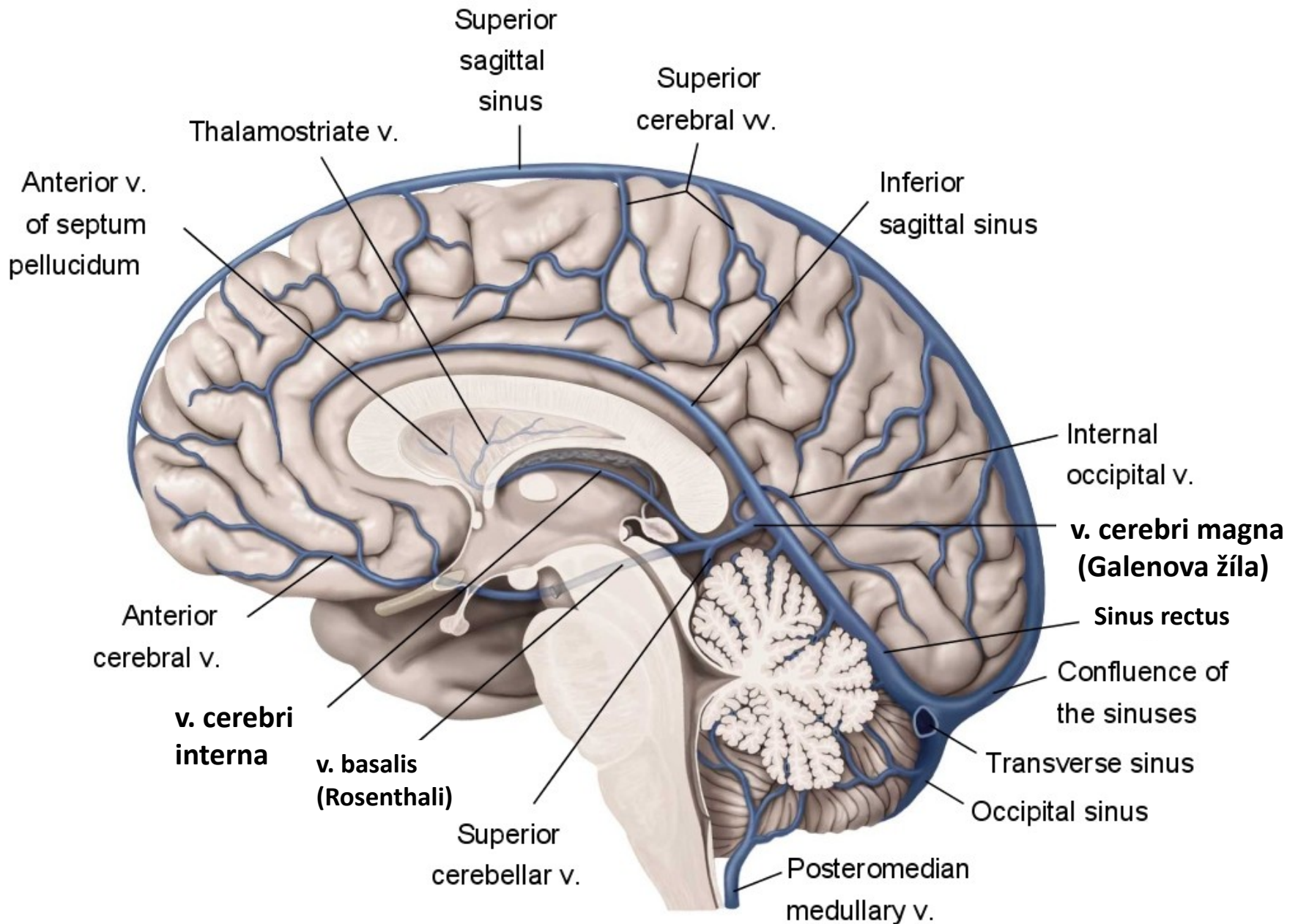




**horizontální řez lebkou:
pohled shora**

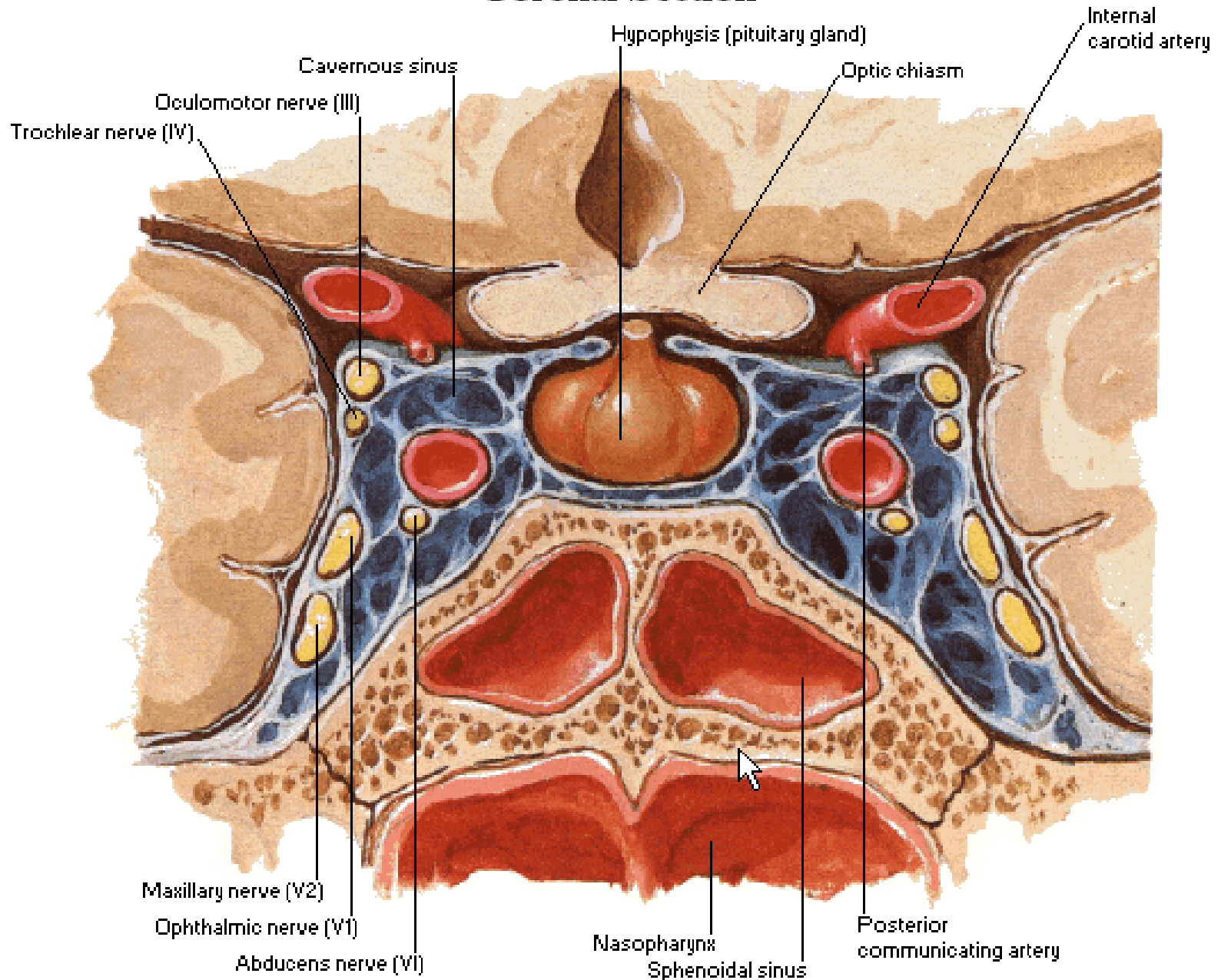






Cavernous Sinus

Coronal Section



Foramen parietale a emisarius

Foramen occipitale a emisarius

Foramen mastoideum a emisarius

Venous plexus around the foramen magnum (marginal sinus)

Venous plexus of hypoglossal canal

External vertebral venous plexus

Superior sagittal sinus

Confluence of the sinuses

Transverse sinus

External occipital protuberance

Sigmoid sinus

Canalis condylaris a emisarius

Internal jugular v.

Occipital v.

