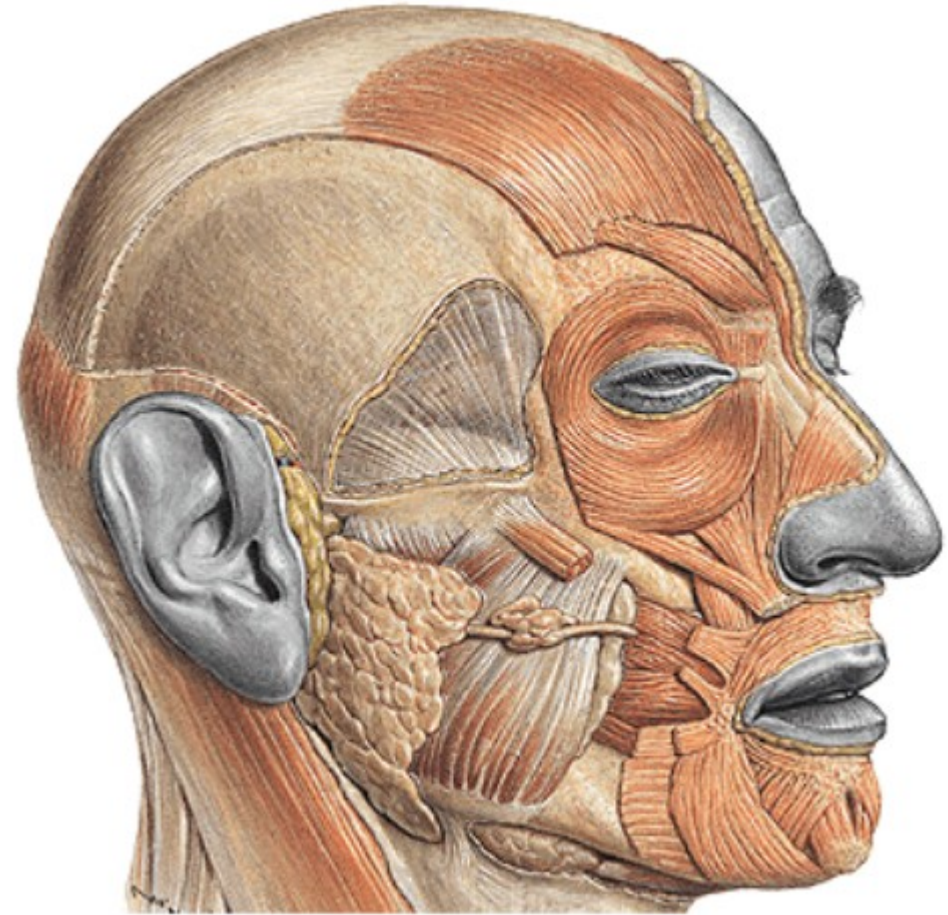


Fossa temporalis, fossa
infratemporalis, fossa
pterygopalatina

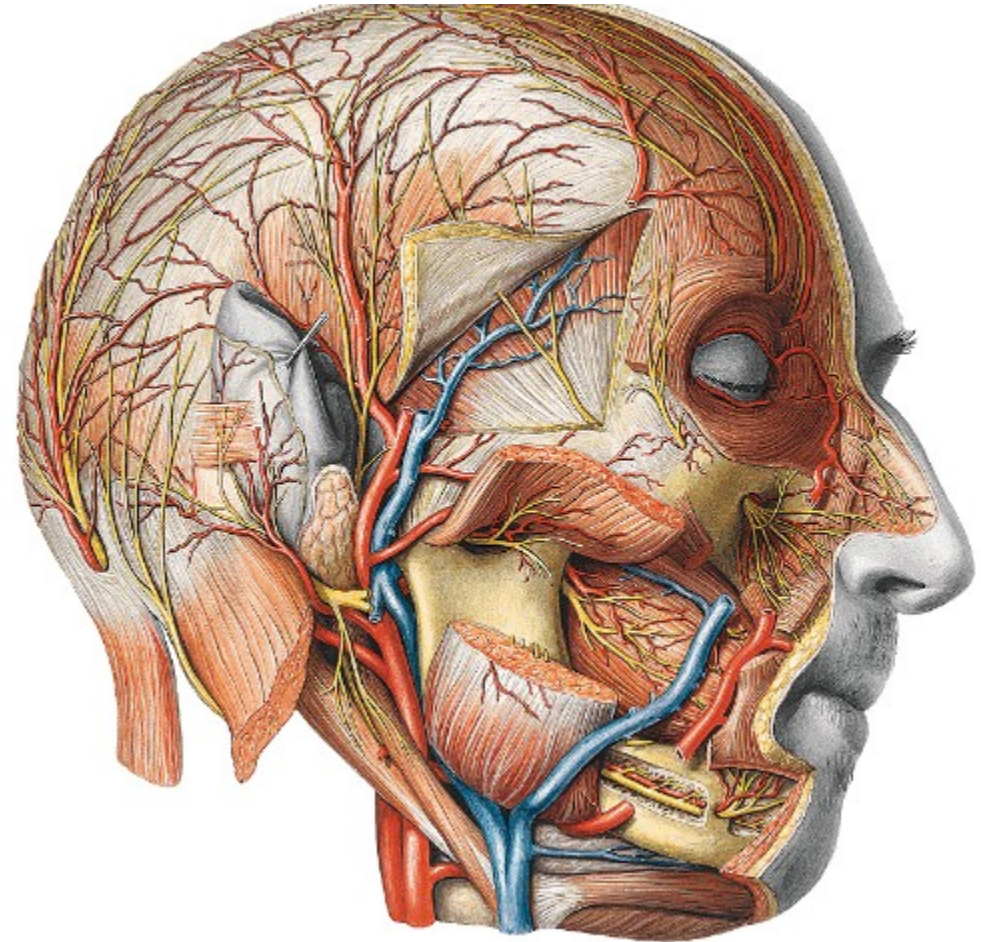
Fossa temporalis

- Ohraničení:
linea temporalis sup.,
arcus zygomaticus

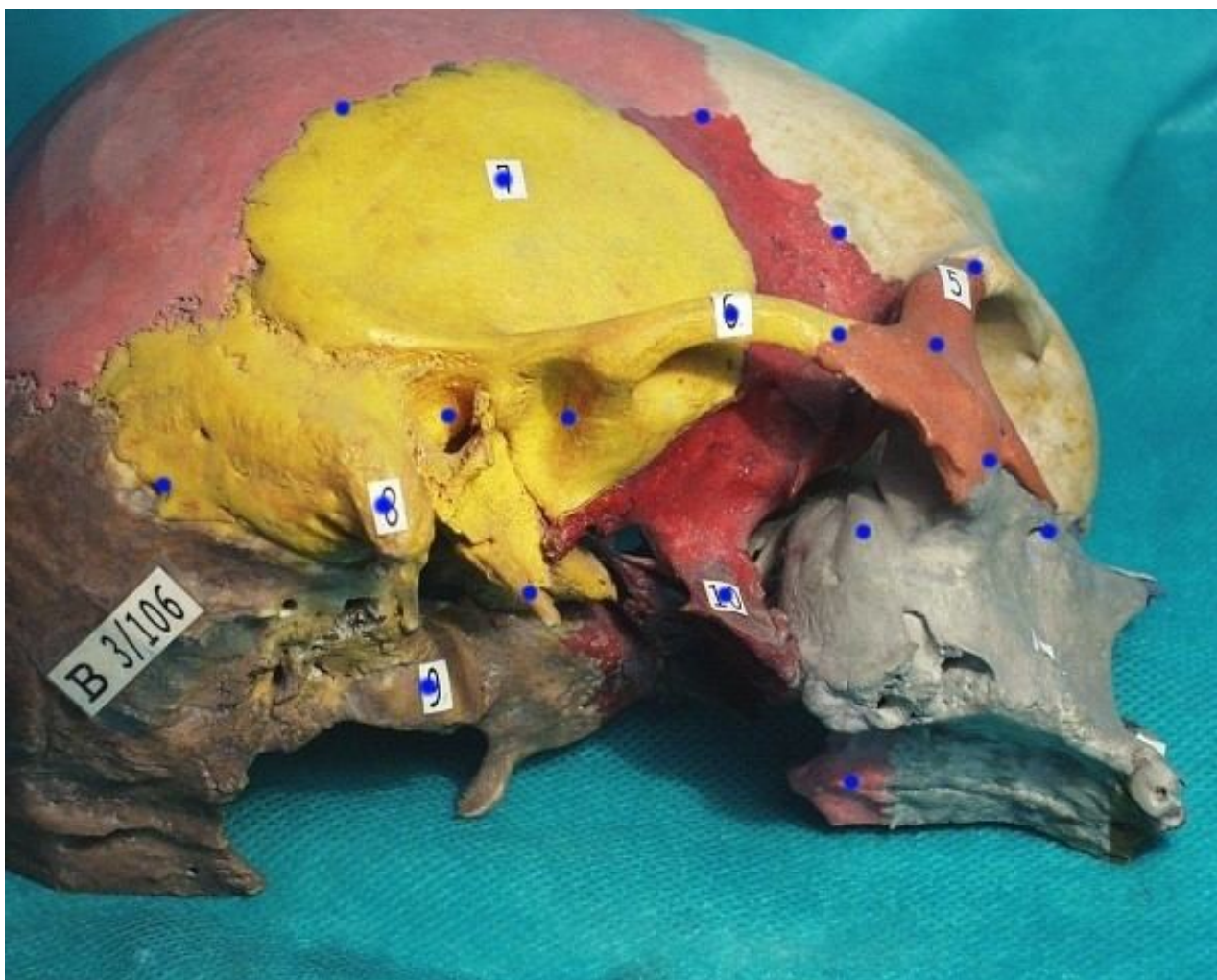


Fossa temporalis - obsa

- kůže
- n. auricularis magnus
- m. temporoparietalis (n.VII.)
- a., v. temporalis spf. (v. retromandibularis)
- n. auriculotemporalis
- fascia temporalis (dva listy)
- m. temporalis
- a.,v., n. temporalis prof.



Fossa infratemporalis



Hranice:

Horní: crista infratemporalis
alae majoris osis
sphenoidalis

Přední: facies infratemporalis
corporis maxillae

Laterální: ramus mandibulae

Mediální: lamina lat. proc.
Pterygoidei

Dorsální: chybí, styloidní
septum

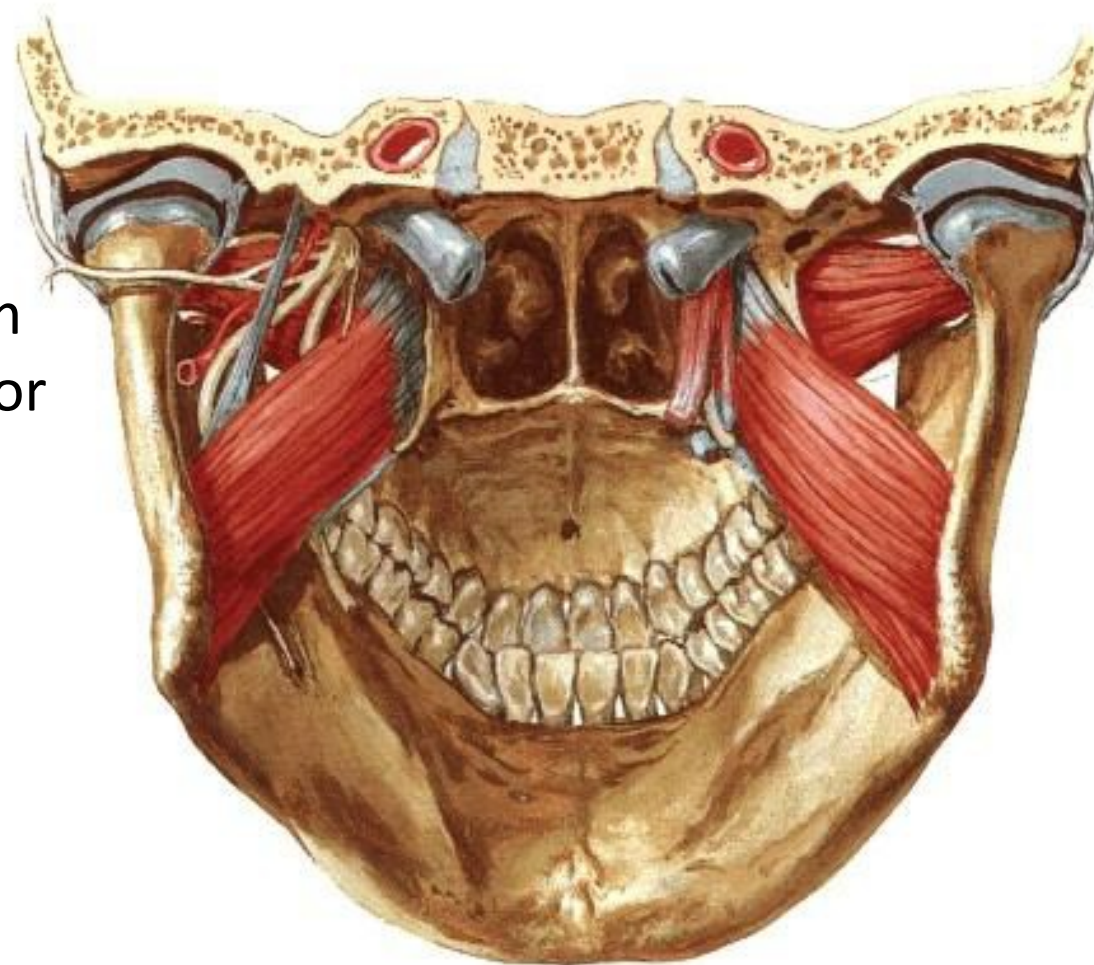
Fossa infratemporalis - obsah

mm. pterygoidei

a.maxillaris

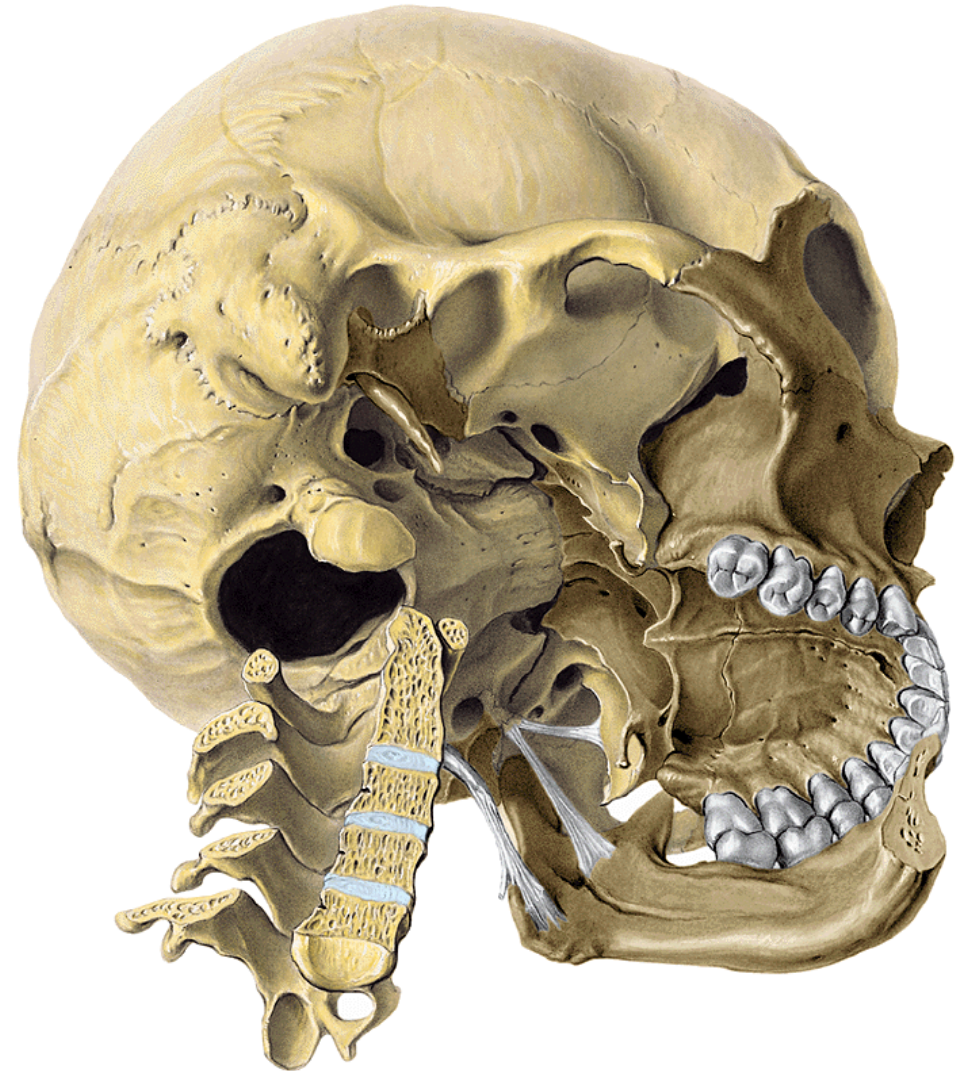
Větve n.mandibularis (větve k žvýkacím svalům, k m. tensor tympani a m. tensor veli palatini, n. buccalis, n. auriculotemporalis, n. lingualis, n. alveolaris inf.)

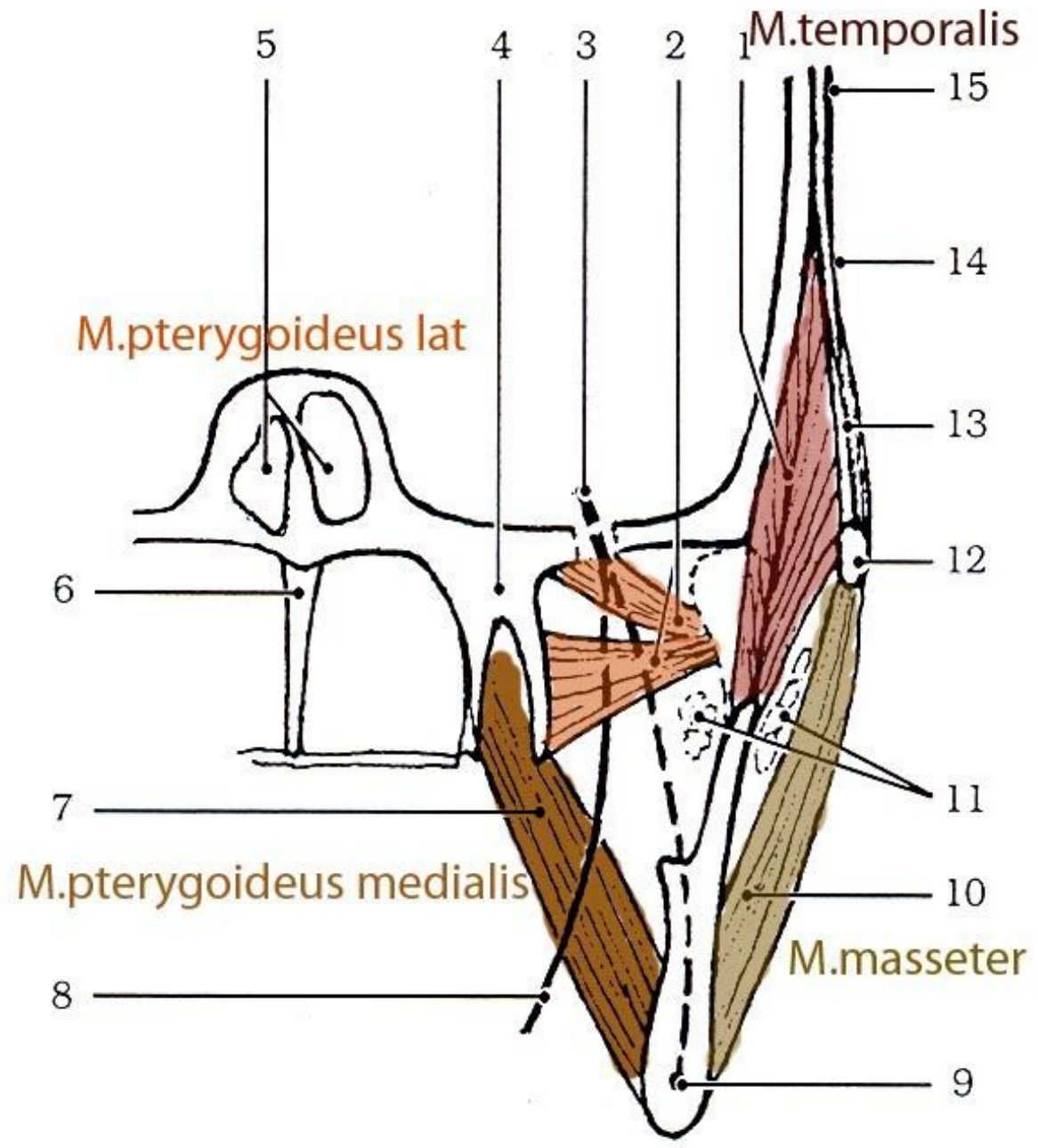
Plexus pterygoideus

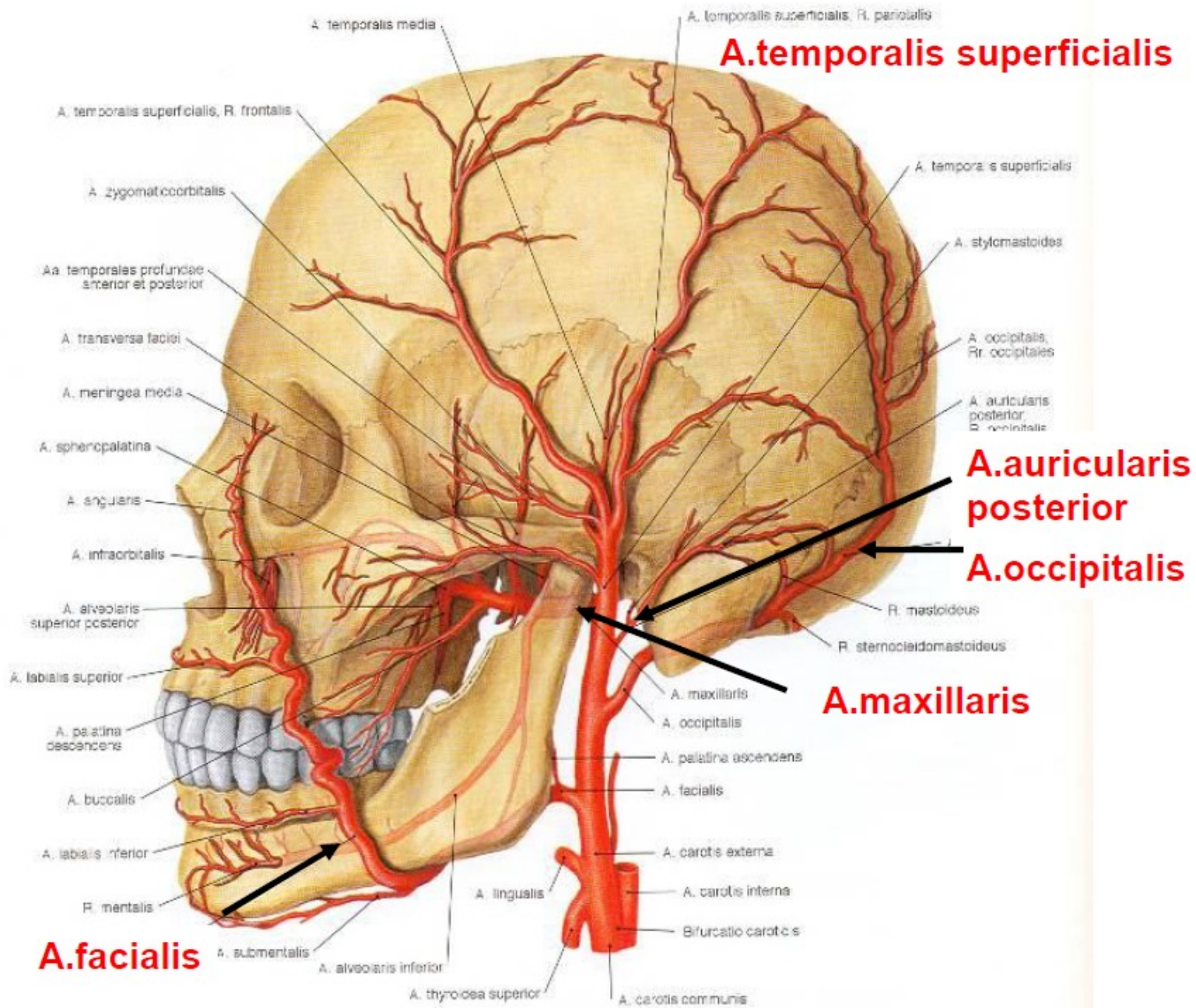


Fossa infratemporalis průchody

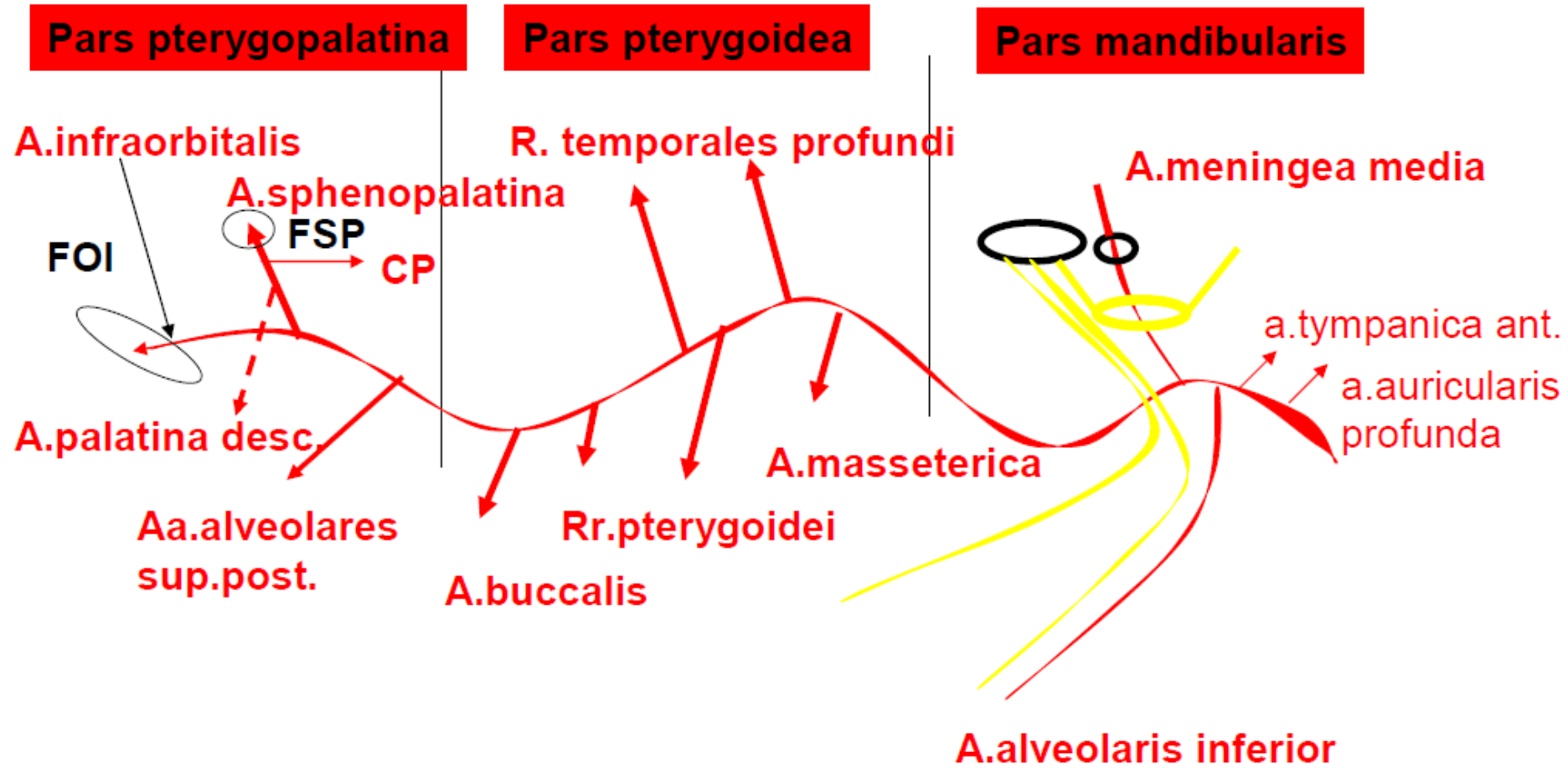
- v.ophthalmica inf. (fissura orbitalis inf.)
- n.mandibularis (foramen ovale)
- a.meningea media (foramen spinosum)
- n.alveolaris inf. (canalis mandibulae)
- n.mylohyoideus (sulcus mylohyoideus)







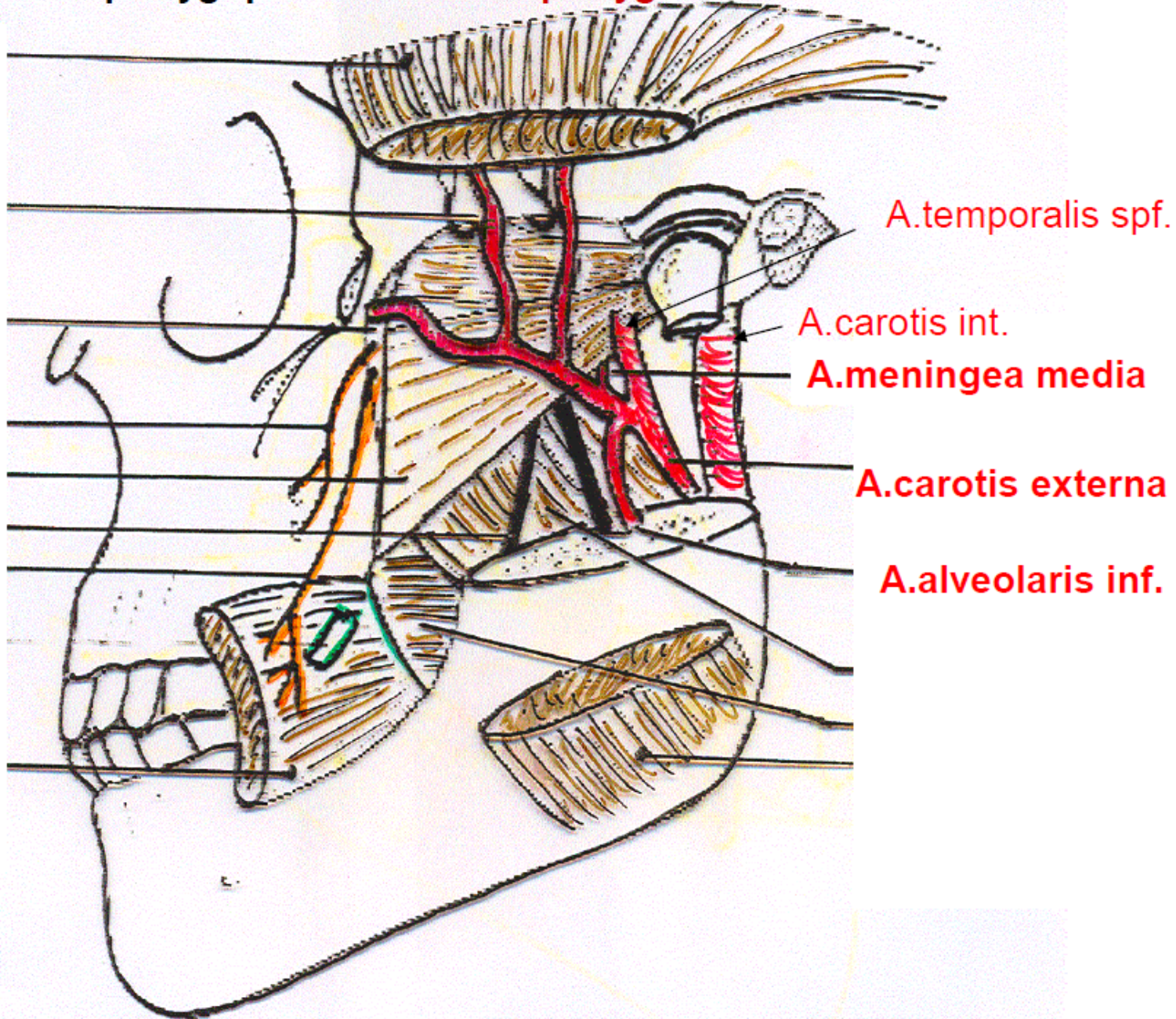
A.maxillaris



Pars pterygopalatina

Pars pterygoidea

Pars mandibularis



Pars mandibularis

arteria meningea media

arteria alveolaris inf.

r. mylohyoideus

rr. dentales

rr. gingivales

a. mentalis

arteria auricularis prof.

arteria tympanica ant.

A. Maxillaris ve fossa infratemporalis

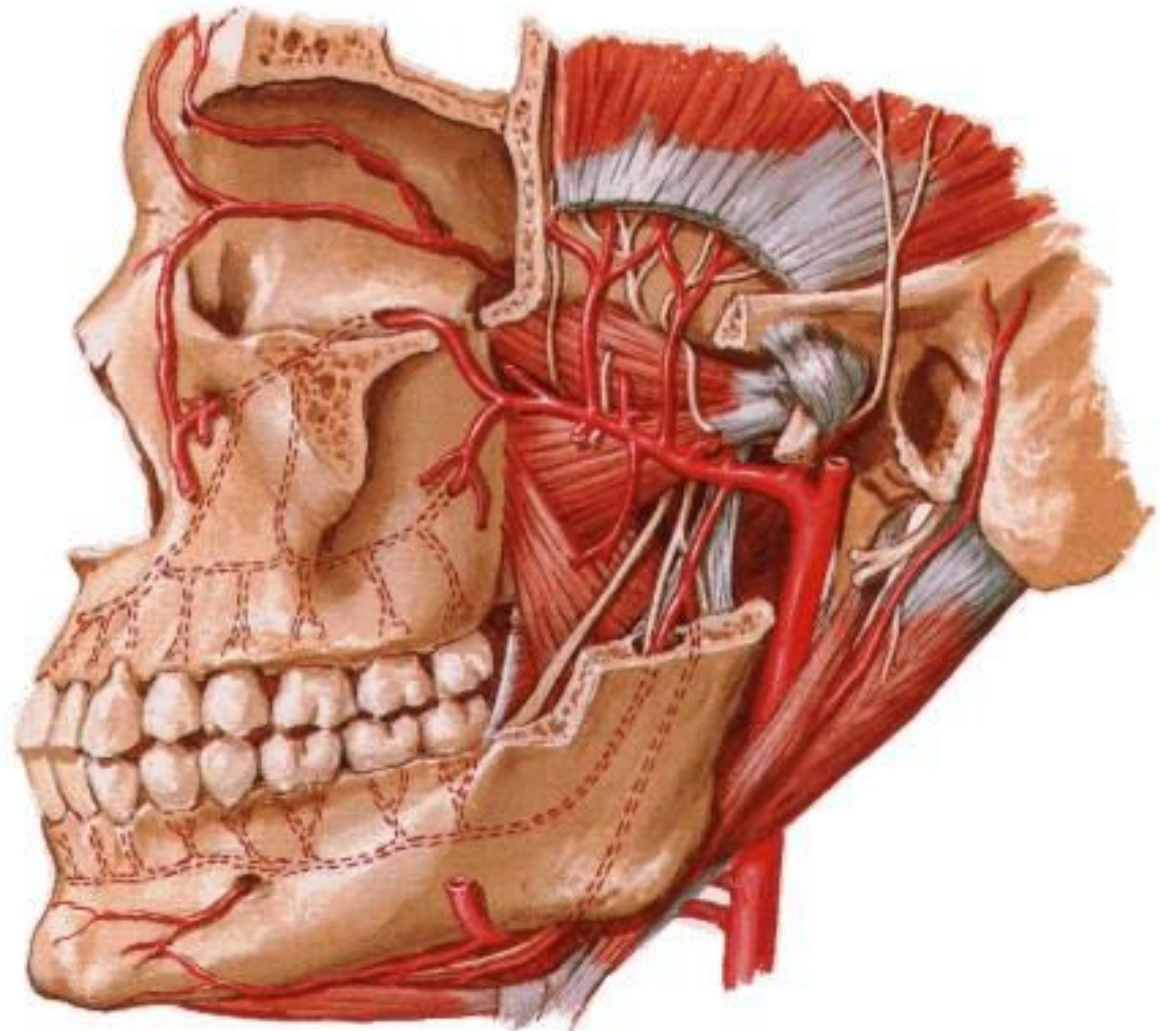
Pars pterygoidea

arteria masseterica

arteriae temporales prof.

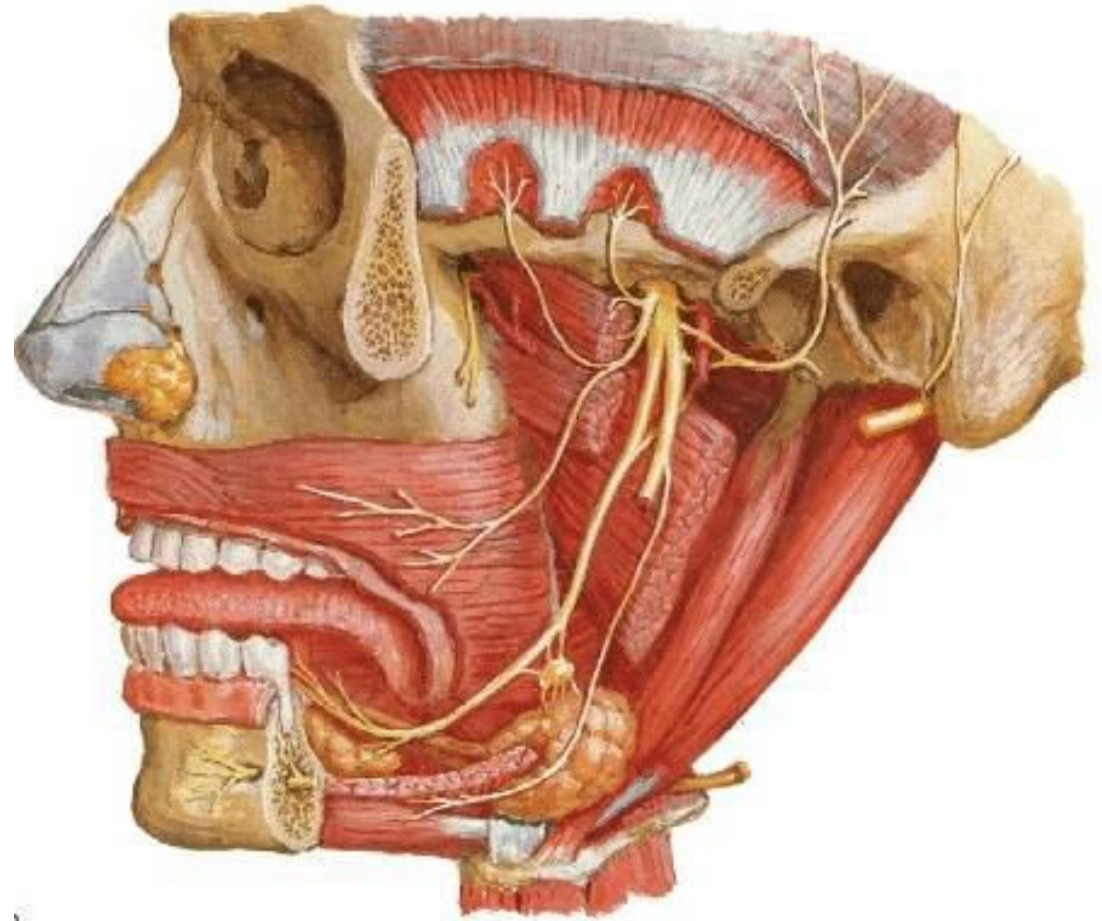
rr. pterygoidei

arteria buccalis



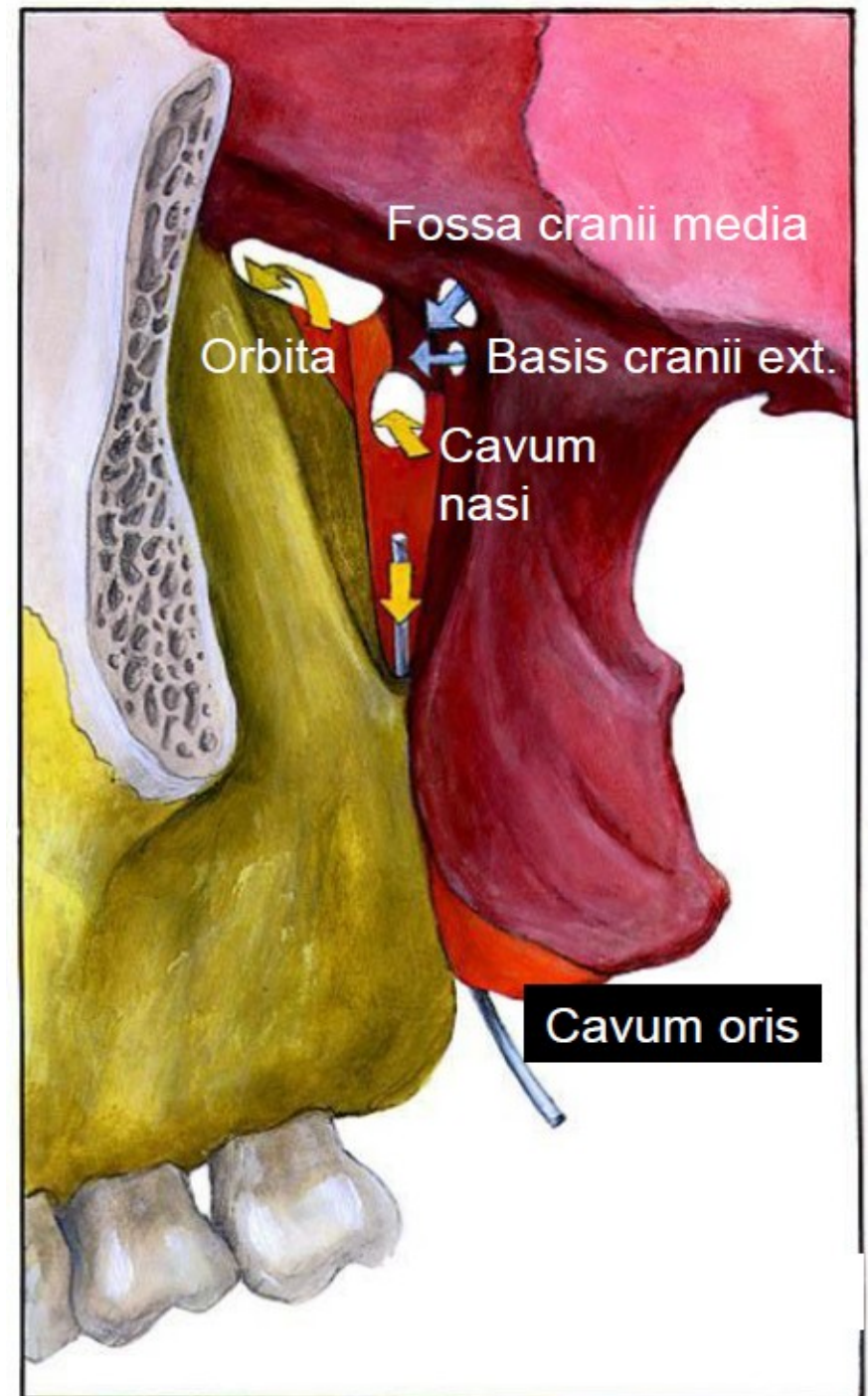
Větve n. mandibularis ve fossa infratemporalis

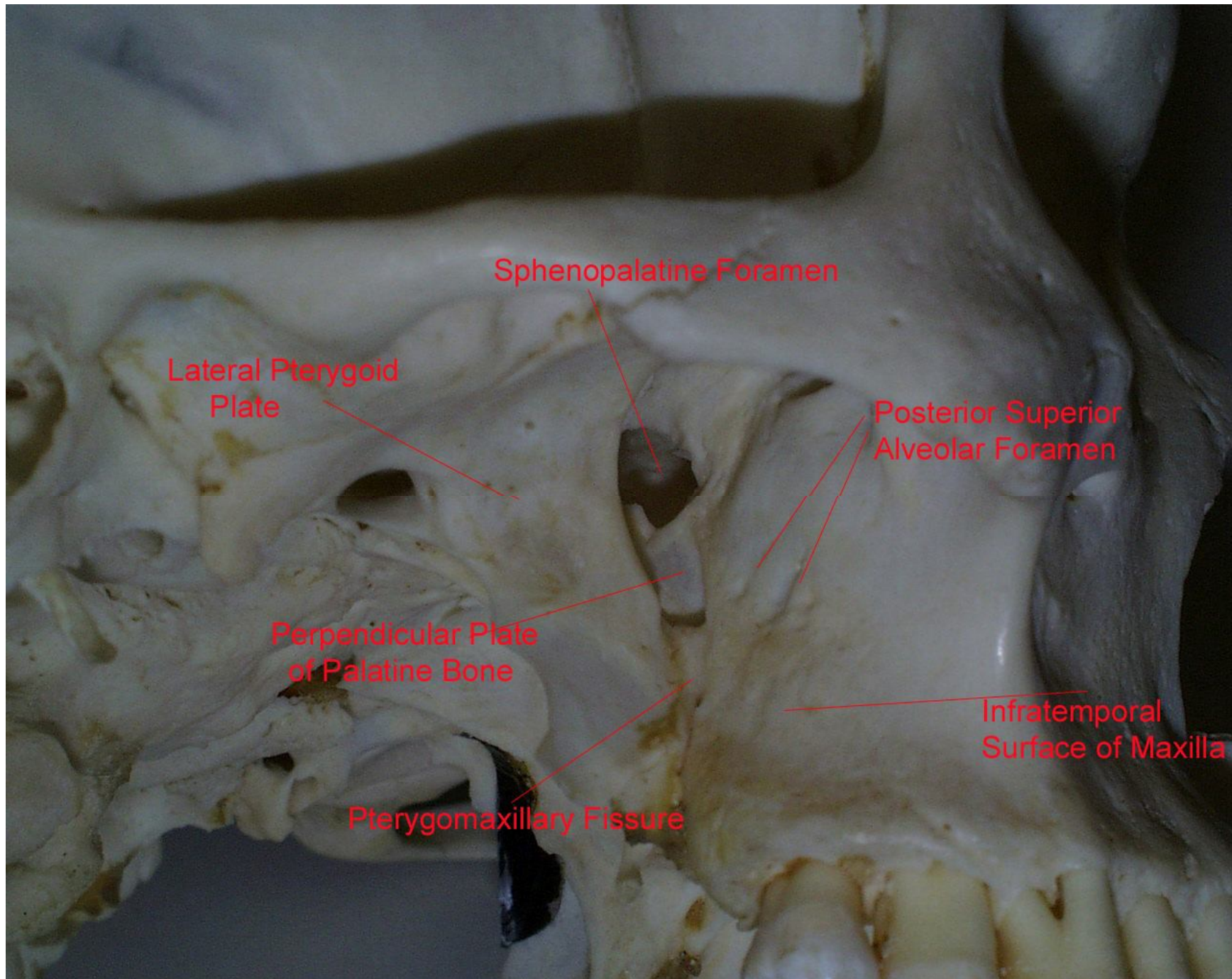
- **N. mandibularis**
- **N. buccalis**
- **N. lingualis**
- **N. alveolaris inf**
- **n. mentalis**
- **R. mylohyoideus**
- **N. auriculotemporalis**



Fossa pterygopalatina

- Horní stěna
 - Facies maxillaris alae majoris ossis sphenoidalis
 - **Foramen rotundum** (fossa cranii media, V2)
 - **Fissura orbitalis inferior** (orbita, n.zygomat., n. infraorbit., a.infraorbit., v. ophtalmica inf.)
- Mediální stěna
 - lamina perpendicularis ossis palatini
 - **Foramen sphenopalatinum** (cavum nasi osseum, a.sphenopalat., rr.nasales post. sup. V2)
- Ventrální stěna
 - tuber maxillae (foramina alveolaria)
- Dorzální stěna
 - Processus pterygoideus ossis sphenoidalis
 - **canalis pterygoideus** (basis cranii externa, n.,a.,v. canalis pterygoidei)
- Kaudálně:
 - **Canalis palatinus major** (cavum oris, n.,a.,v. palat. major)





Sphenopalatine Foramen

Lateral Pterygoid Plate

Posterior Superior Alveolar Foramen

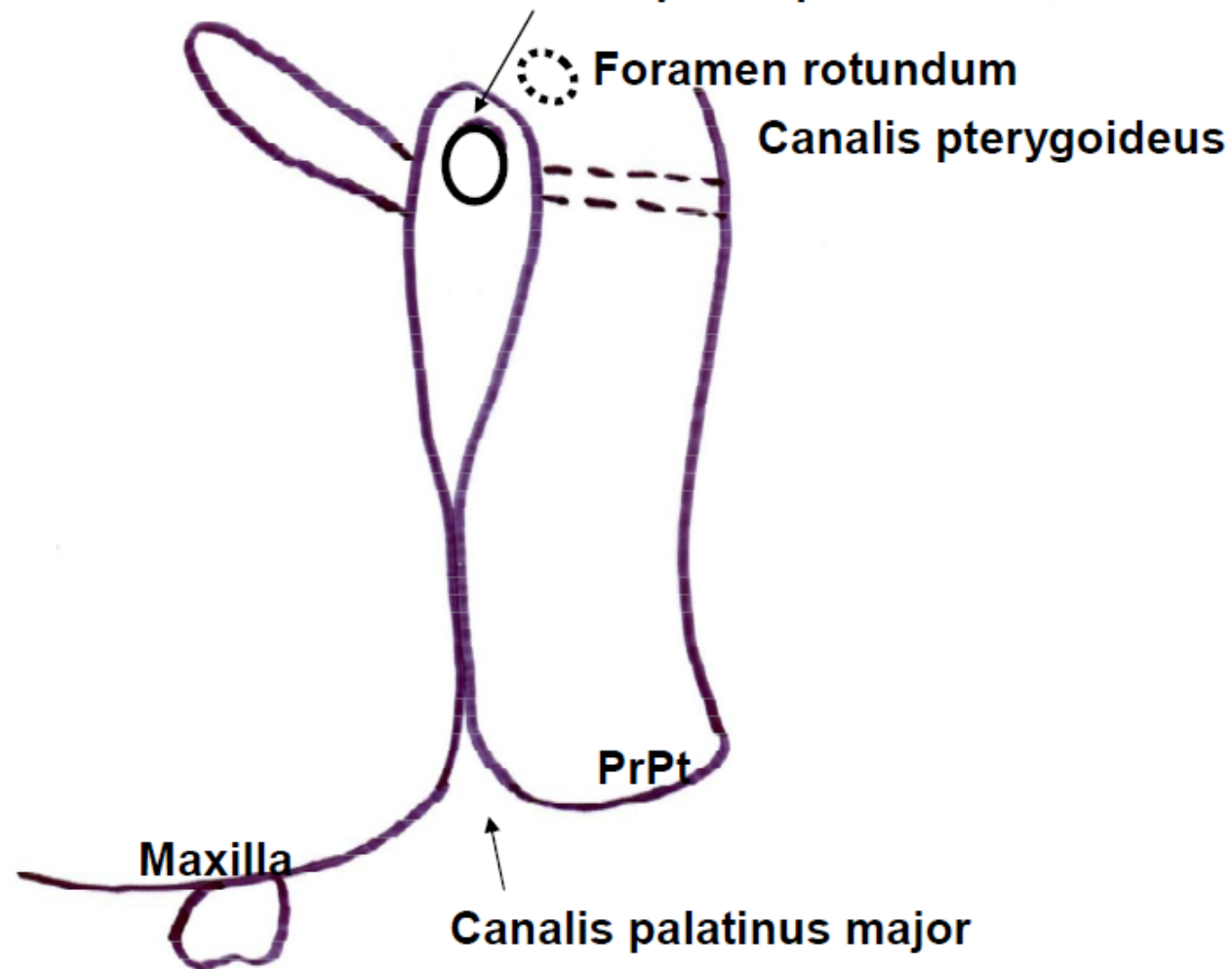
Perpendicular Plate of Palatine Bone

Infratemporal Surface of Maxilla

Pterygomaxillary Fissure

Pohled na fossa pterygopalatina z boku

Fissura orbitalis inferior Foramen sphenopalatinum



Větve a.maxillaris - pars pterygopalatina

Pars pterygopalatina

a. infraorbitalis

a. alveolaris sup. post.

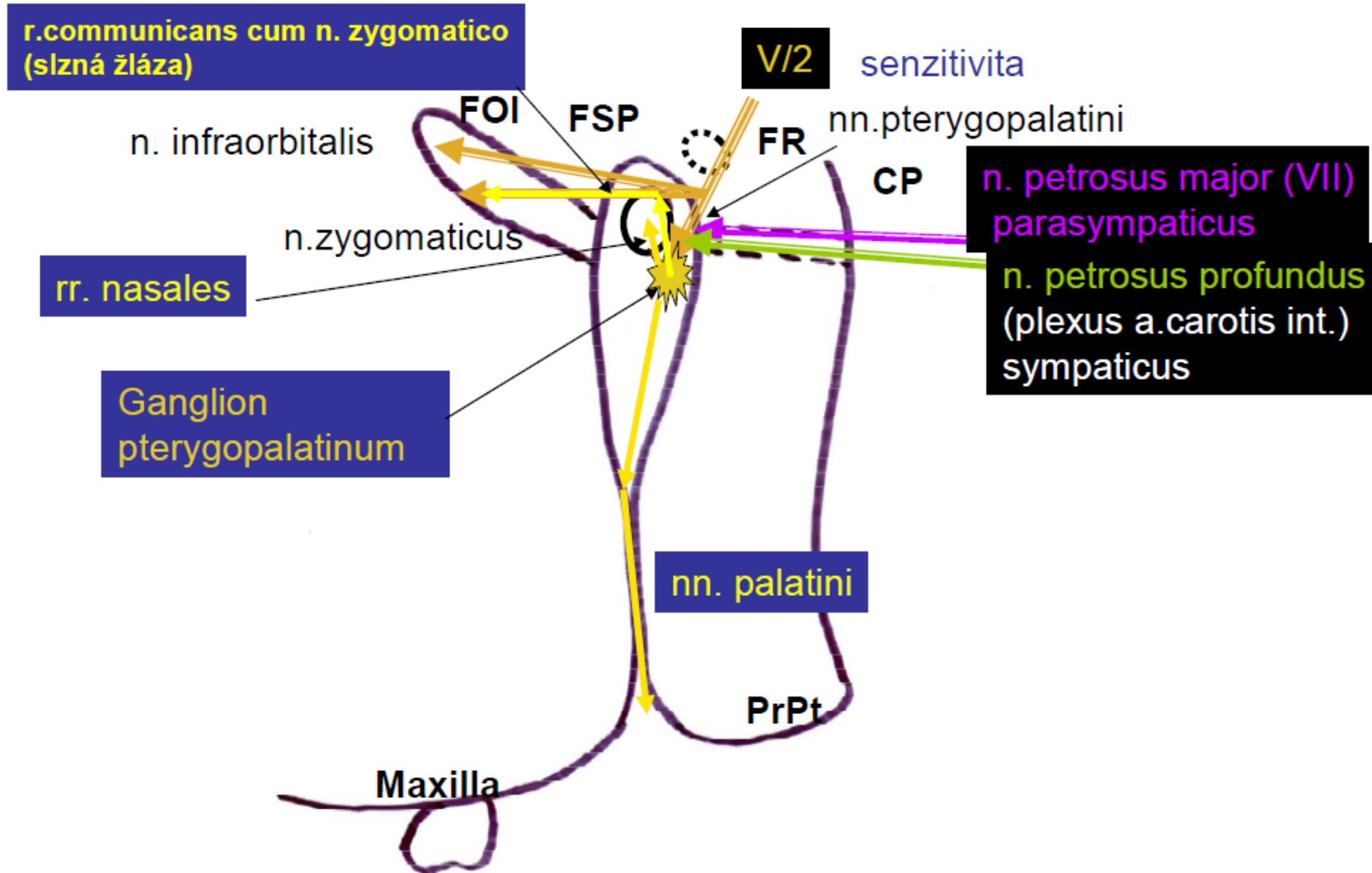
a. palatina descendens

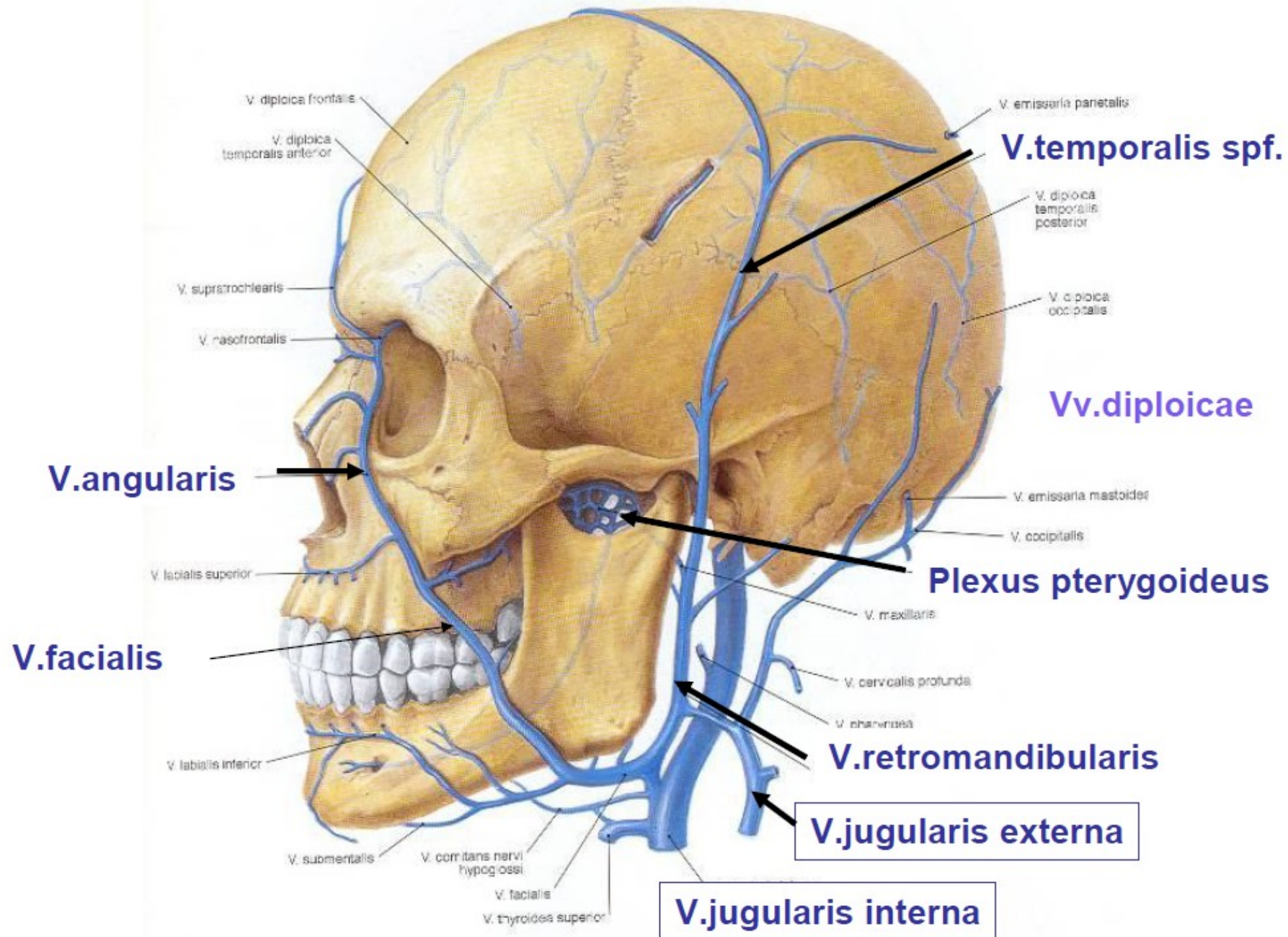
a. canalis pterygoidei

a. sphenopalatina



Pohled na fossa pterygopalatina z boku (průchody nervů)





- **References:**

- Čihák, R.: Anatomie 1,2,3, Praha, Grada, 2001
- Netter, F.: Atlas of Human Anatomy, 4th ed., Elsevier, USA, 2006
- Naňka, Elišková: Přehled anatomie. Galén, Praha 2009
- Seidl et al.: Radiologie pro studium i praxi, Grada publishing, 2013
- Mrázková, Doskočil: Klinická anatomie pro stomatologii, Alberta, Praha, 1994
- Brand, Isselhard: Anatomy of orofacial structures, 8th edition, Elsevier, USA, 2019
- Fehrenbach, Herring: Illustrated anatomy of the head and neck, 5th edition, Elsevier, USA, 2017
- Moore, Dalley: Clinically oriented anatomy, 5th edition, USA, 2006