

Female genital organs

MUDr. Marek Joukal, Ph.D.

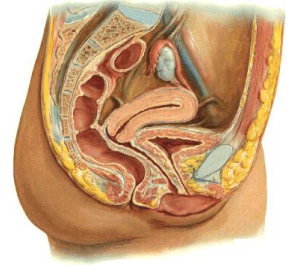
Department of Anatomy

Female internal genital organs

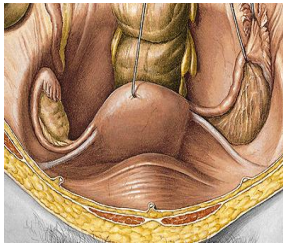
Ovary (*ovarium*)
Phalopian tube (*tuba uterina*)
Uterus
Vagina

Female external genital organs

Mons pubis
Labia majora et minora
Clitoris
Bulbus vestibuli
Glandulae vestibulares



OVARY



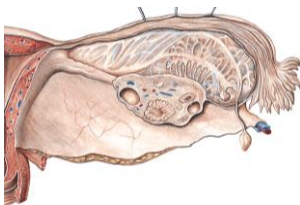
Extremitas tubaria (superior)
Extremitas uterina (inferior)
Facies medialis
Facies lateralis
Margo mesovaricus (anterior)
Margo liber (posterior)

Lig. suspensorium ovarii (vasa ovarica)

Lig. ovarii proprium
Hilus ovarii
Mesovarium
Lig. latum uteri



Histology of the ovary



Germinative epithelium
Tunica albuginea
Cortex ovarii
folliculi ovarici
corpora lutea
Medulla ovarii

Folliculi ovarici primarii (300 000- 400 000)

Folliculus ovaricus vesiculosus (Graaf's)

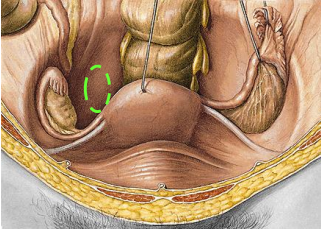
Ovulation
Corpus luteum
menstruationis
graviditatis
Corpus albicans



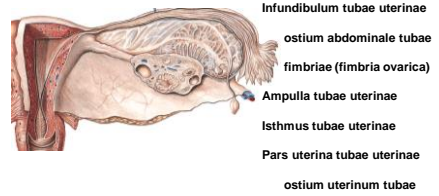
LOCALIZATION OF THE OVARY

Nullipara – fossa ovarica (in front of a. iliaca int.)

Multipara – Claudius fossa (behind a. iliaca int.)



TUBA UTERINA (SALPINX)

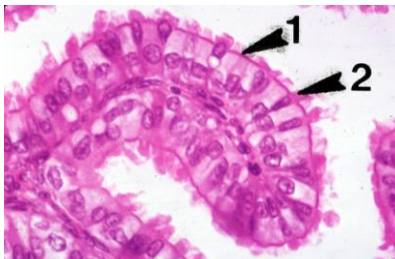
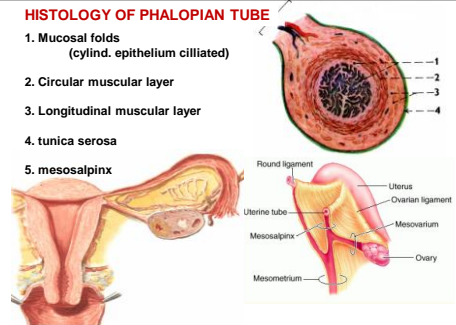


OSTIUM ABDOMINALE TUBAE UTERINAE



HISTOLOGY OF PHALOPIAN TUBE

1. Mucosal folds (cylind. epithelium cilliated)
2. Circular muscular layer
3. Longitudinal muscular layer
4. tunica serosa
5. mesosalpinx

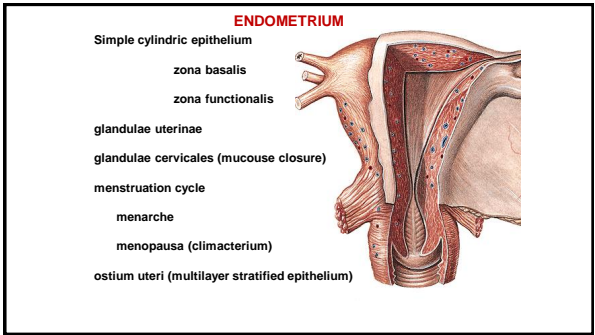
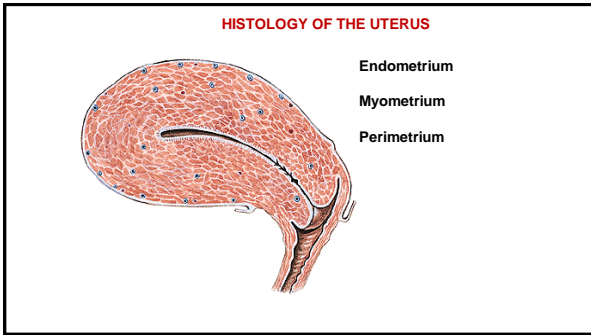
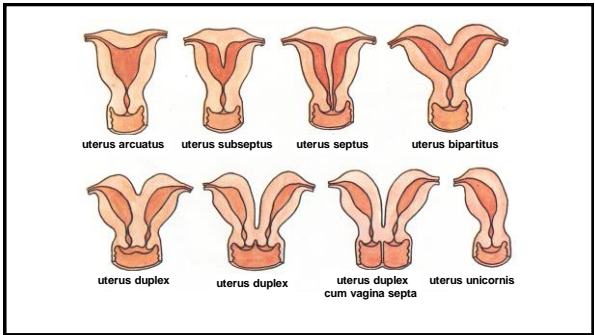
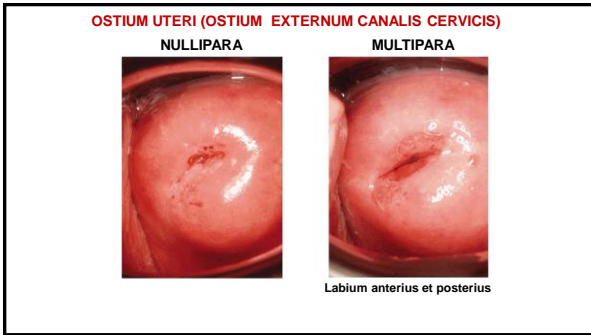
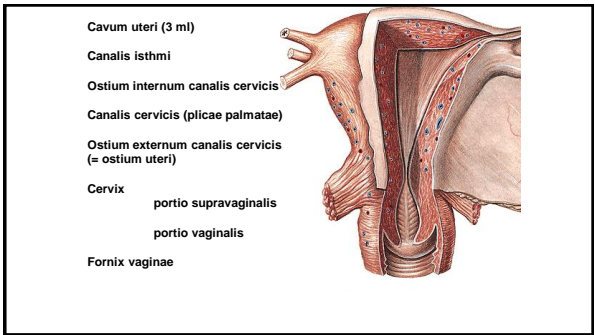
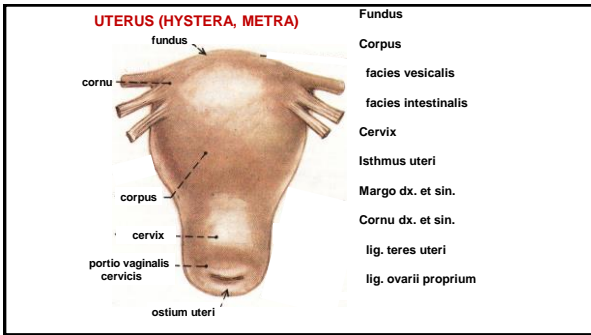


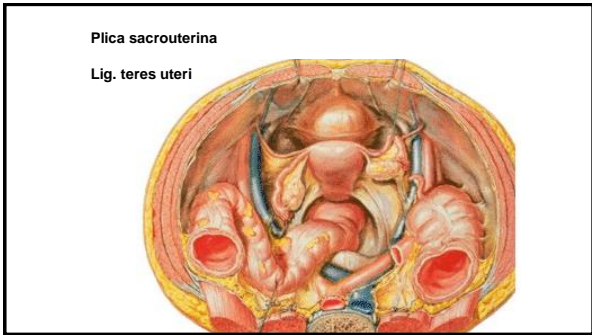
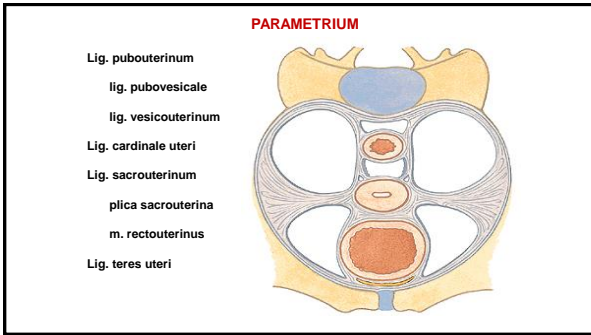
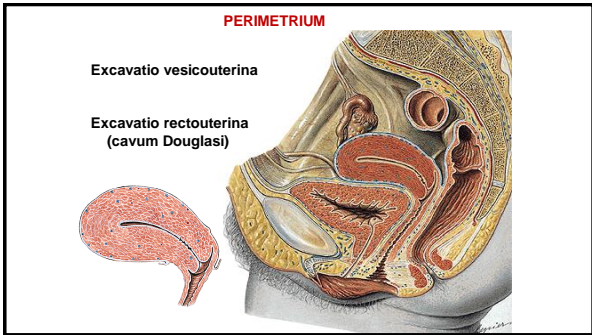
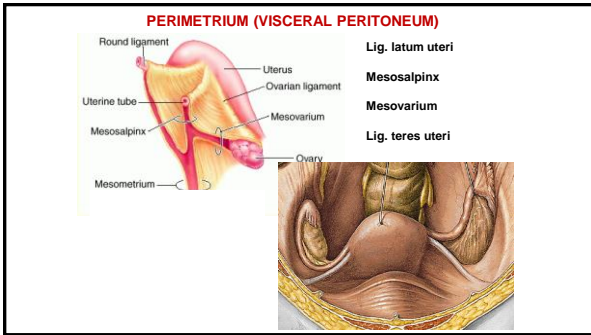
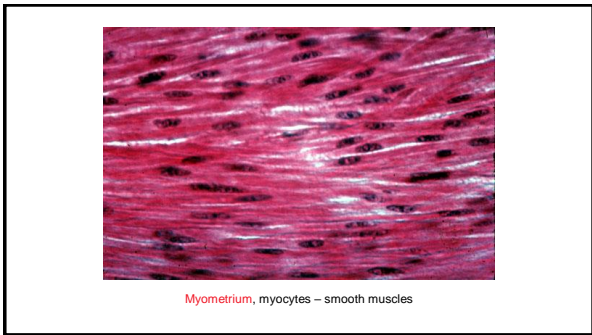
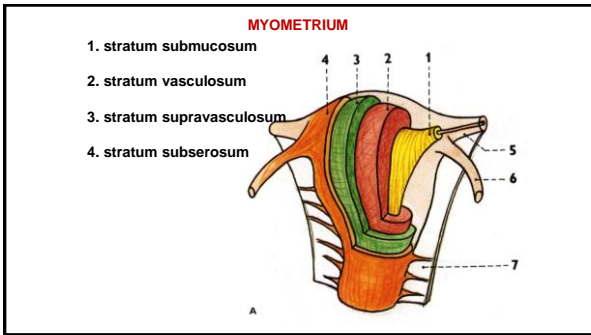
Tuba uterina – mucosal fold = cylindric. epithelium – 1. secretory cells - 2

PHALOPIAN TUBE COURSE

- from uterus runs laterally to the pelvic wall
- dorsocranially to the upper pole of ovary
- fimbriae rotated to fac. medialis ovarii



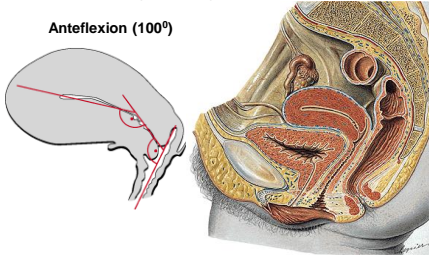




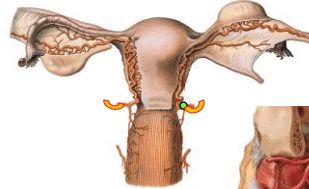
POSITION OF UTERUS

Anteversio (70° – 100°)

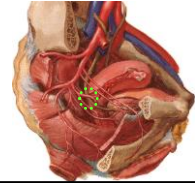
Anteflexio (100°)



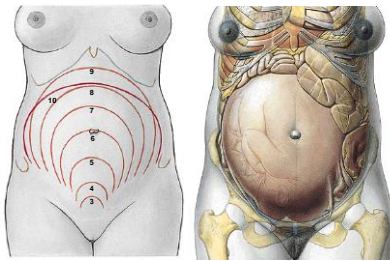
Arteria uterina – anastomosis with a. ovarica (ovarian arcade)



Uterine artery crosses ureter
(2 cm from uterine margine
1,5 cm from fornix vaginae)



GRAVIDITY



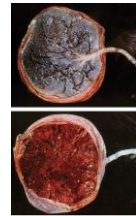
Placenta

Funiculus umbilicalis – 50 cm

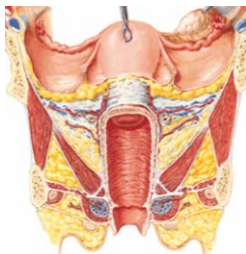
(v.umbilicalis, aa. umbilicales)



uterus graviditatis – 1000 g



VAGINA (KOLPOS)



Fornix vaginae
pars anterior et posterior
receptaculum seminis
Paries anterior
crista urethralis
area trigonalis vaginae
Paries posterior
Rugae vaginales
Columna rugarum ant. et post.
Ostium vaginae
(vestibulum vaginae)

Ostium vaginae - hymen

Defloratio

Carunculæ hymenales



Ostium urethrae ext.
Ostium vaginae



HISTOLOGY OF VAGINA



Mucouse membrane
 Multilayer squamous epithelium
 No glands !!!
 submucouse tissue – venous net
 Muscular layer
 inner - circular
 outer - longitudinal
 Adventicia
 Serosa – excavatio rectouterina

Position of vagina

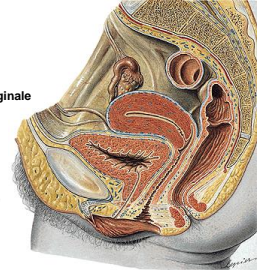
Ventrocandal direction

Ventrally:

urinary bladder
 urethra - septum urethrovaginale

Dorsally:

excavatio rectouterina
 rectum - septum rectovaginale
 centrum perineale



Organa genitalia feminina externa

Labia majora pudendi
 Labia minora pudendi
 Mons pubis
 Vestibulum vaginae
 Clitoris
 Glandulae vestibulares
 Bulbi vestibuli



Labia majora pudendi

Sulcus genitofemoralis
 Rima pudendi
 Commissura labiorum ant.
 Mons pubis
 Commissura labiorum post.
 Pubes
 Perineum (raphe perinei)



MONS PUBIS



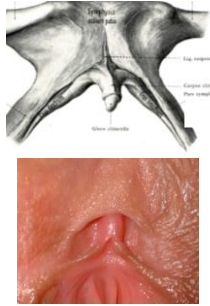
Pubes
 Fatty tissue

Labia minora pudendi



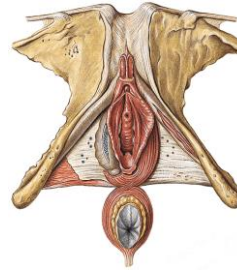
Sulcus interlabialis
 Vestibulum vaginae
 Smegma
 Frenulum labiorum pudendi
 Fossa vestibuli vaginae
 Praeputium clitoridis
 Frenulum clitoridis





CLITORIS

- Crura clitoridis (crista phallica)
- Corpus clitoridis
- Glans clitoridis
- Præputium clitoridis
- Frenulum clitoridis
- Corpora cavernosa clitoridis



- Lig. fundiforme clitoridis
- Lig. suspensorium clitoridis
- M. ischiocavernosus

VESTIBULUM VAGINAE

between labia minora pudendi

Glans clitoridis (præputium et frenulum clitoridis)

Ostium urethrae externum (papilla urethralis, gl. vestib. minores)

Ostium vaginae (hymen)

Fossa vestibuli vaginae

Frenulum labiorum pudendi (commisura labiorum pudendi)



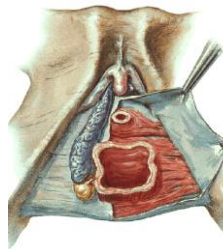
BULBI VESTIBULI

Erectile bodies (corpus spongiosum)

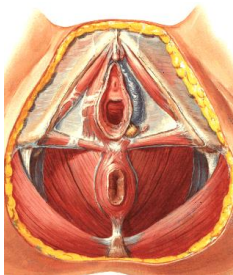
on diaphragma urogenitale

m. bulbospongiosus (from centrum tendineum perinei to the dorsum clitoridis)

commisura bulborum (between glans clitoridis and ostium urethrae ext.)



GLANDULAE VESTIBULARES MAJORES (BARTHOLINI)



On the diaphragma urogenitale
Dorsally from bulbi vestibuli

m. bulbospongiosus

Opens to the vestibulum vaginae

Diaphragma pelvis

Musculus levator ani (arcus tendineus m. levatoris ani)

musculus pubococcygeus

musculus iliococcygeus

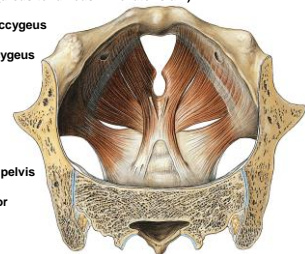
Musculus coccygeus

Hiatus urogenitalis

Lig. anococcygeum

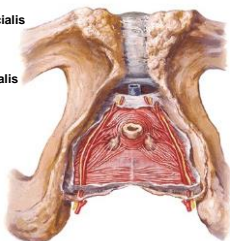
Fascia diaphragmatis pelvis

superior et inferior



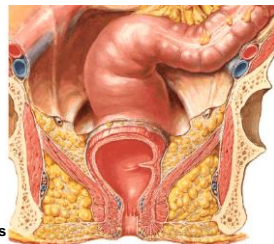
Diaphragma urogenitale

- Lig. transversum perinei
- M. transversus perinei profundus
- M. transversus perinei superficialis
- M. sphincter urethrae
- Fascia diaphragmatis urogenitalis superior et inferior



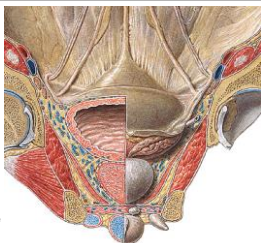
FOSSA ISCHIORECTALIS

- Mediocranial: diaphragma pelvis
- Lateral: m. obturatorius int. fascia obturatoria (canalis pudendalis)
- Ventral: recessus pubicus
- Dorsal: m. gluteus maximus



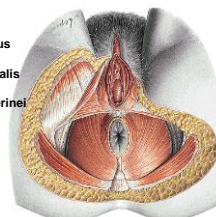
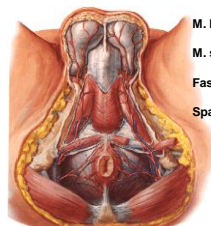
FASCIA PELVIS

- Fascia pelvis parietale
- Fascia pelvis viscerale
- Arcus tendineus fasciae pelvis
- Cavum pelvis peritoneale
- Cavum pelvis subperitoneale



MUSCLES OF THE EXTERNAL GENITAL ORGANS

- M. ischiocavernosus
- M. bulbospongiosus
- M. sphincter ani externus
- Fascia perinei superficialis
- Spatium superficiale perinei



References:

Putz, R. (2008):
Atlas of Human Anatomy Sobotta, Elsevier Books.

Keith L. Moore, Arthur F. Dalley (2005):
Clinically Oriented Anatomy, Williams and Wilkins.

Platzer, W., Kahle, W., Leonhardt H. (1992):
Locomotor system, Georg Thieme Verlag, Stuttgart, New York, 4th edition.

Čihák, R. (1987):
Anatomie 1, Avicenum, Zdravotnické nakladatelství.

Netter, F. H. (1997):
Interactive Atlas of Clinical Anatomy, Novartis, USA.