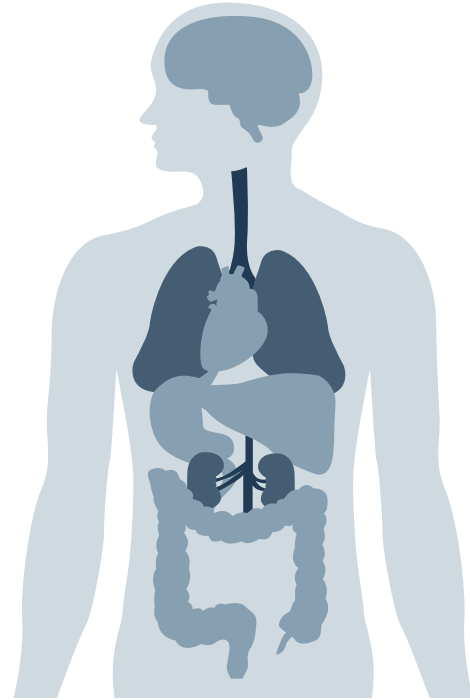
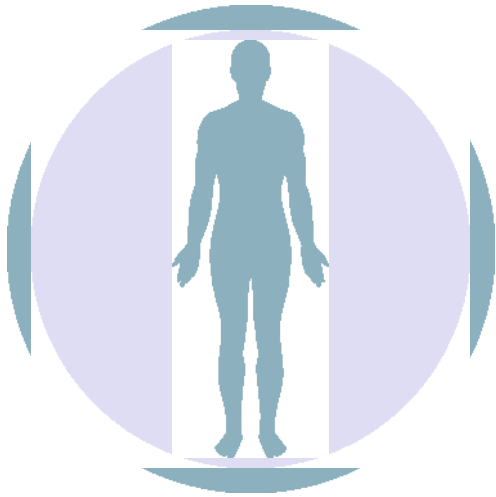


POSITION

*Expressing Position in
Medical Terminology*

Cham Ghannoum





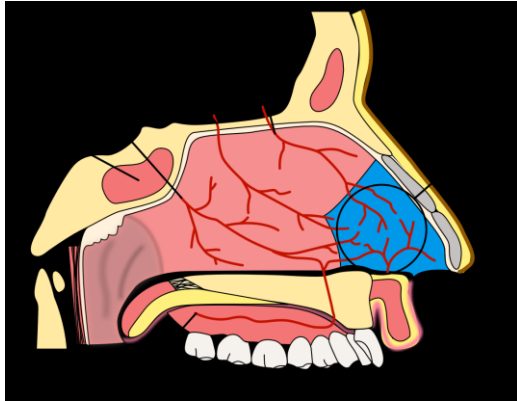
EXPRESSING POSITION

- A) PREPOSITIONS
- B) COMPARATIVE FORMS
- C) ADJECTIVES
- D) COMPOUNDS
- E) PREFIXES

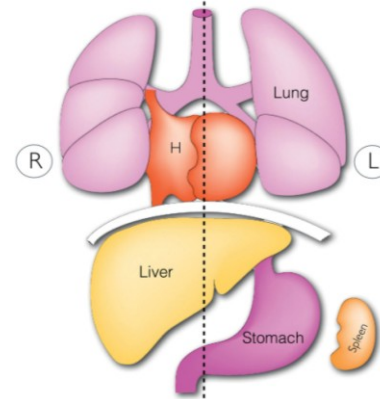
GENERAL TERMS

Locus, i, m. / Situs, us, m. = *greek prefix topo-* = place

> Locus is a more concrete, specific term while situs is a more abstract term with a broader sense



locus
kiesselbach:
is a region in the anteroinferior part of the nasal septum



situs solitus:
refers to the normal position of the thoracic and abdominal organs

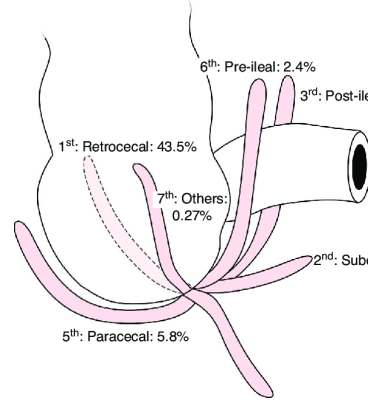
GENERAL TERMS

Commonly used in:

- **In situ** *in the (mentioned) place*
- **Loco typico** *in the typical place*
- **Loco cicatricis** *in the place of the scar*
- i. **cicatrix, icis, f. = scar**
- **Eodem loco** *in the same place*

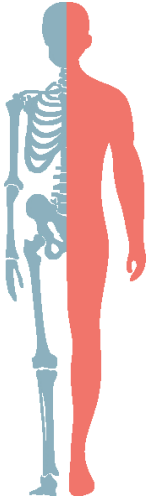


Localis, e
anaesthesia localis



positio, onis, f.
Positio retrocaecalis

LATERAL POSITION



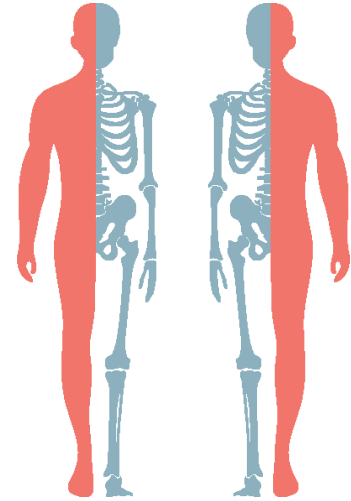
lateris dextri (l.dx.)

= on the right side,
the right one



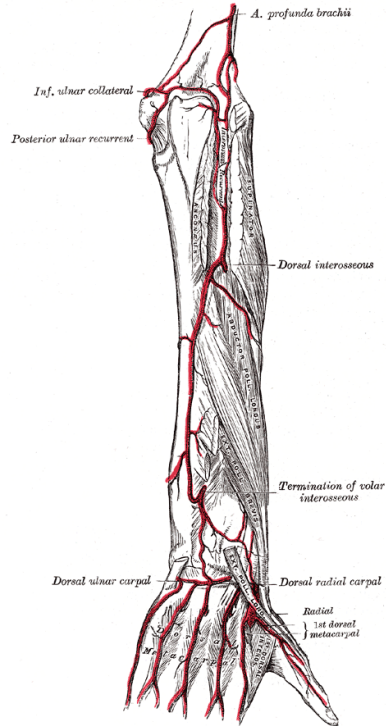
lateris sinistri (l.sin.)

= on the left side, the
left one



lateris utriusque (l. utr.)

= on both sides, both



arteria collateralis

Lateral Position

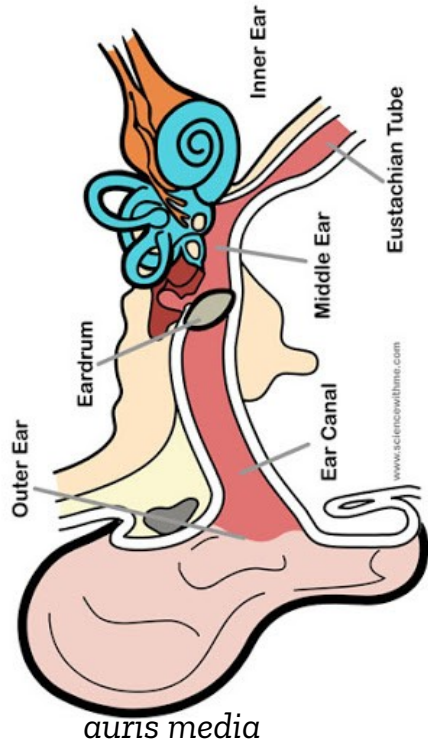
- later- *(prefix) = related to side e.g., lateropositio uteri
/bi/lateralis, e = /bi/lateral e.g., decubitus bilaterales

collateralis, e = located on the same side e.g., arteria collateralis

sinistro-/dextropositio = reversal of an organ to the left/right
e.g. dextropositio cordis

marginalis, e = marginal e.g., gingivitis marginalis

acralis, e = referring to extremities e.g., cyanosis acralis



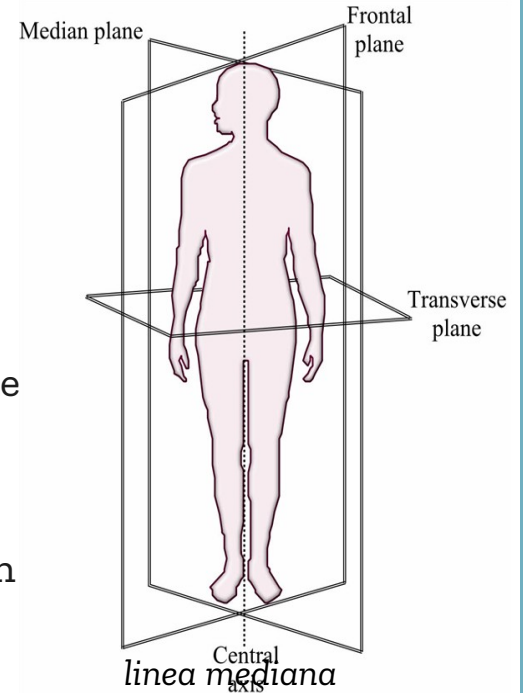
Medial Position

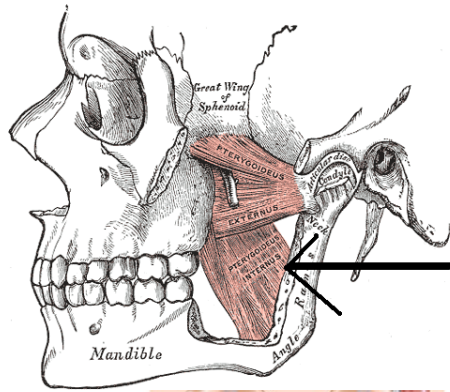
medius, a, um

medianus, a, um = exactly in the middle

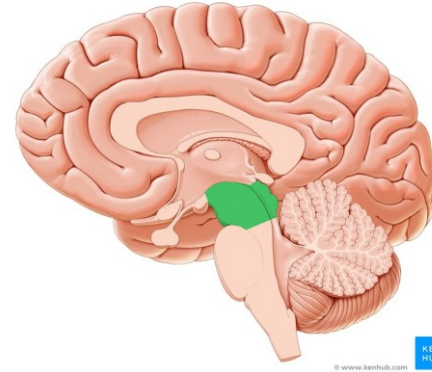
medialis, e versus lateralis, e

intermedius, a, um = in between two other structures

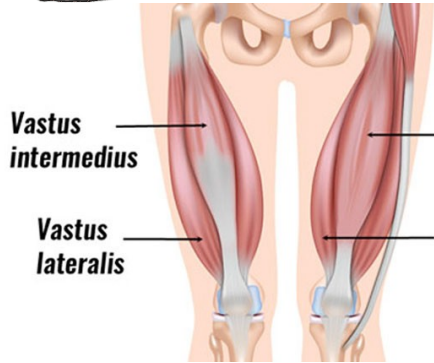




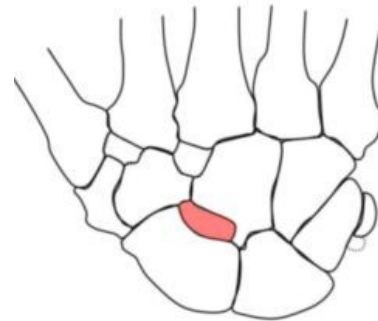
medialis, e
Musculus
pterygoideus
medialis



mes-o- (prefix)
mesencephalon



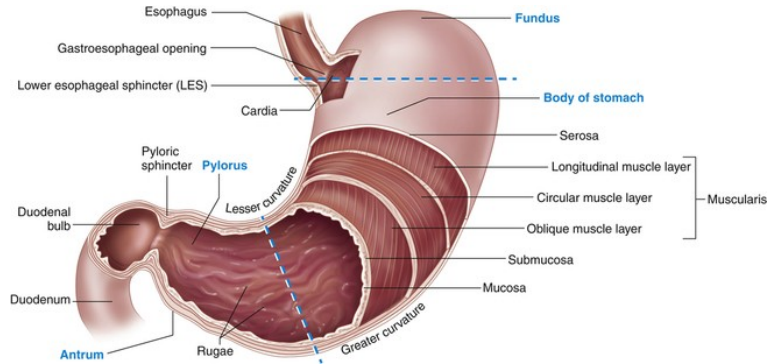
intermedius, a, um
Musculus vastus
intermedius



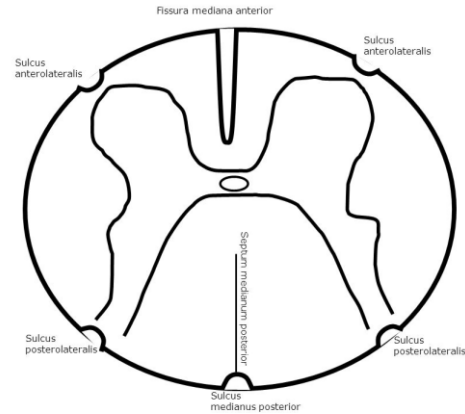
centralis, e
Os centrale carpi

ANTERIOR POSITION / before something

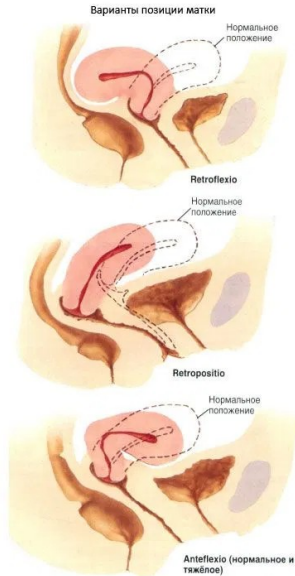
anterior, ius
 (comparative form)
 e.g. *paries anterior gastris*



antero- before, earlier, front
 (prefix)
 e.g. *funiculus anterolateralis*



Ante- = before or in front of e.g. *antepositio uteri*



Prae- = before or in front of
 Synonym of 'pre'
 e.g. *transfusio praeoperativa*



Pro- = before or in front of
 e.g. *progeria adultorum; prognathia*

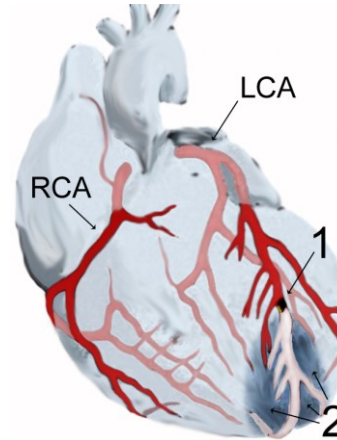


POSTERIOR POSITION / after something

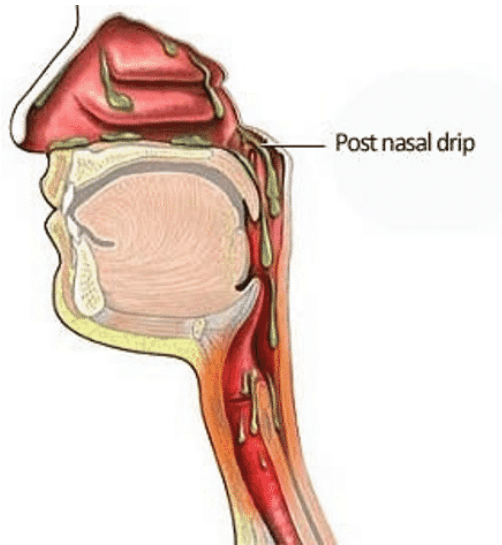
posterior, ius
(comparative form)
e.g. *processus posterior tali*



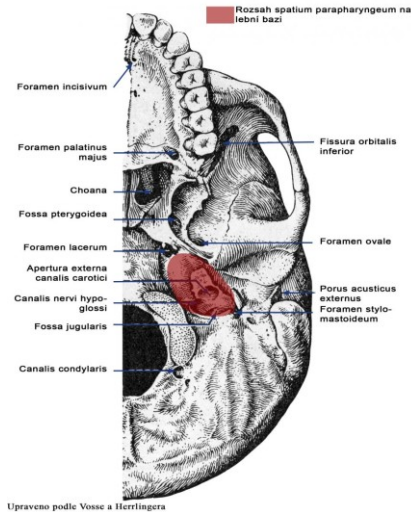
postero- behind
(prefix)
e.g. *infarctus posterolateralis*



Post – (L.) - after,
behind or later
e.g. *regio postnasalis*

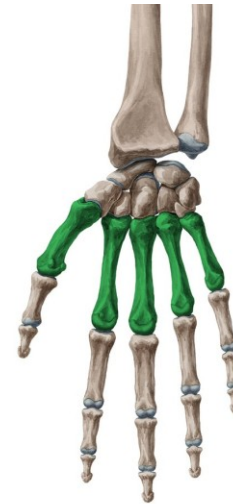


Retro – (L.) – behind,
backwards
e.g. *spatium retropharyngeum*



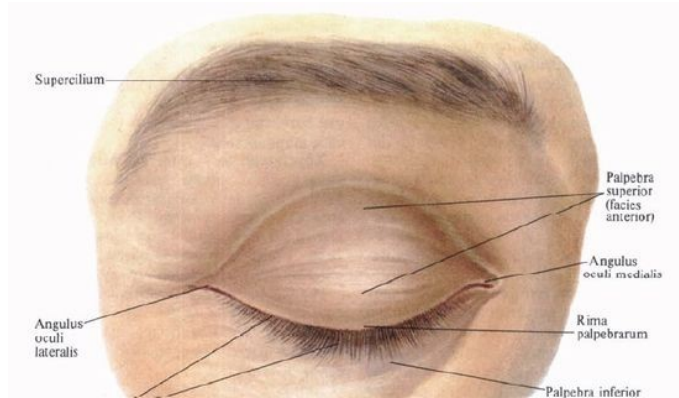
Upraveno podle Vosse a Herlingera

Meta – (L.) –after, beyond
e.g. *ossa metacarpalia*

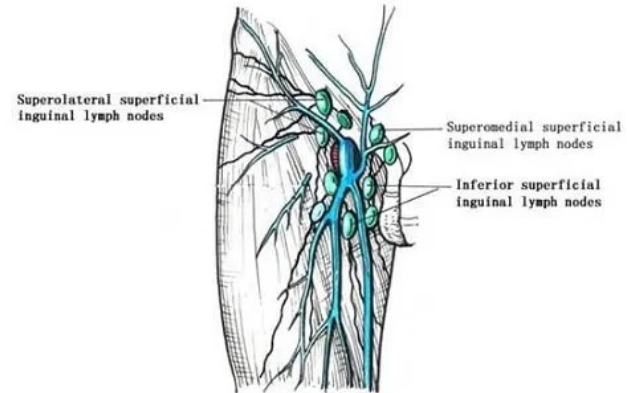


SUPERIOR POSITION

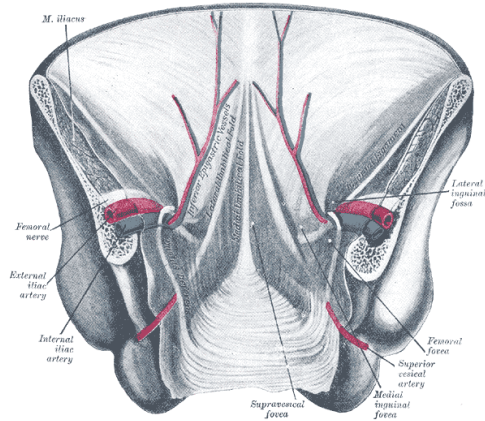
superior, ius
 (comparative form)
 e.g. *palpebra superior*



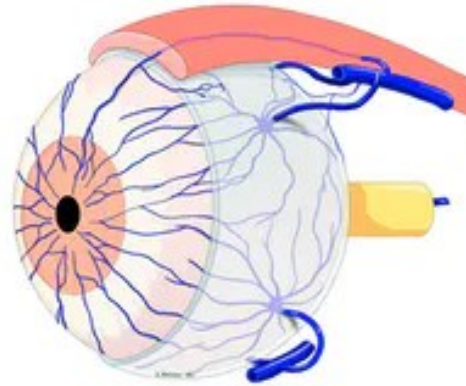
supero- *above, over, beyond*
 (prefix)
 e.g. *nodi lymphatici inguinale*
superficiales superomediales



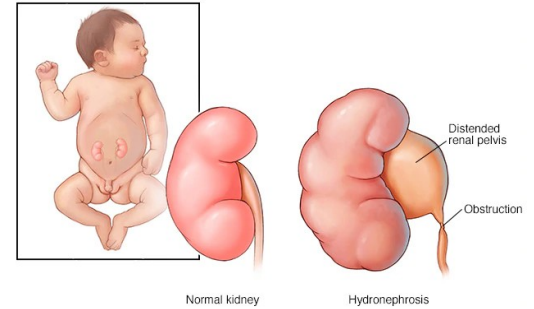
Supra- / Super- (prefix)
over/ on the surface of
e.g. *fossa supravescicalis*



Epi- (prefix) on the surface of
e.g. *venae episclerales*

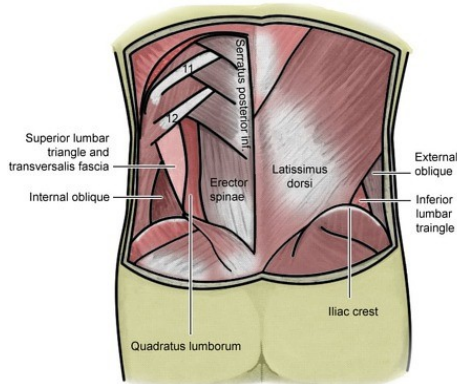


Hyper- (prefix) over,
above, excessive
e.g., *hypernephritis*



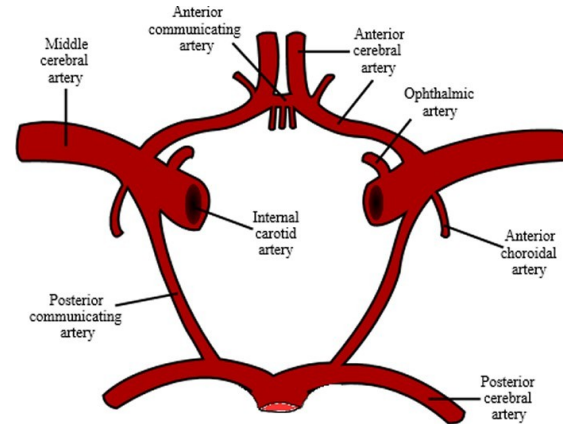
INFERIOR POSITION

inferior, ius
 (comparative form)
 e.g. *trigonum lumbale inferius*

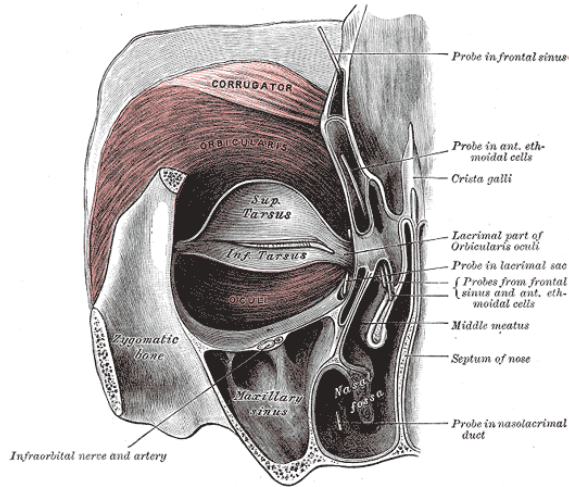


© By Behrang Amir, based on Fig. 1 from Orzutt TW. Hemia of the superior lumbar triangle. *Ann Surg*. 1971 Feb;173(2):294-7.

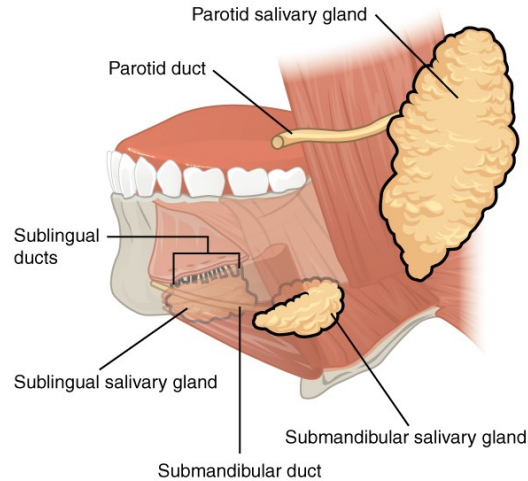
infero- lower, inferior
 (prefix)
 e.g. *infarctus inferoposterior*



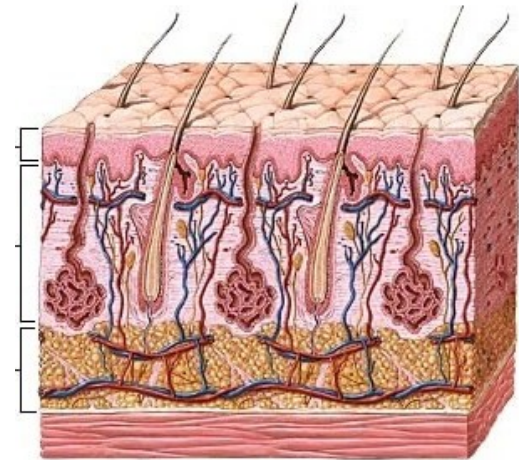
Infra (prefix) below/
beneath location
e.g. *nervus infraorbitalis*



Sub- (prefix) under, below
e.g. *ductus sublingualis major*

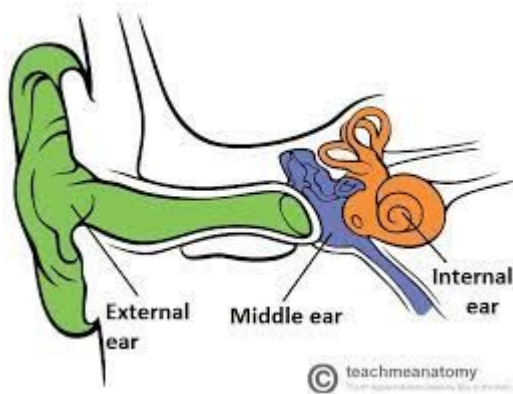


Hypo- (prefix) below
normal (rarely for
location)
e.g., *hypodermis*

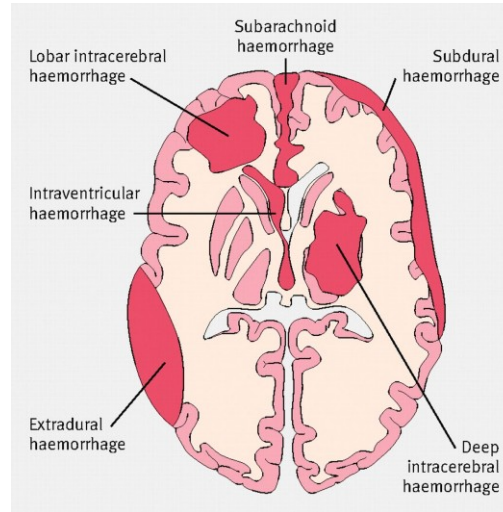


INTERNAL POSITION

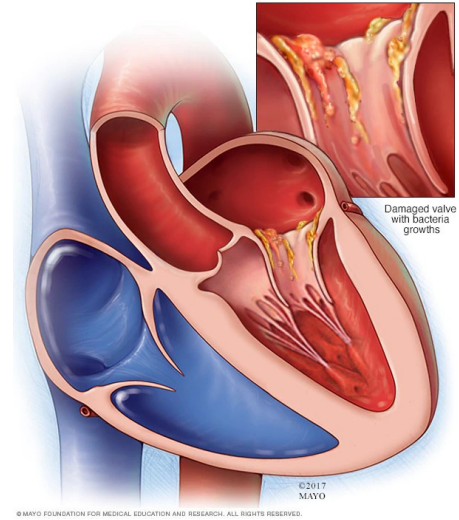
Internus, a, um -
internal, deep, inward
e.g. *auris interna*



Intra- (prefix) between, within
e.g. *haemorrhagia intracranialis*

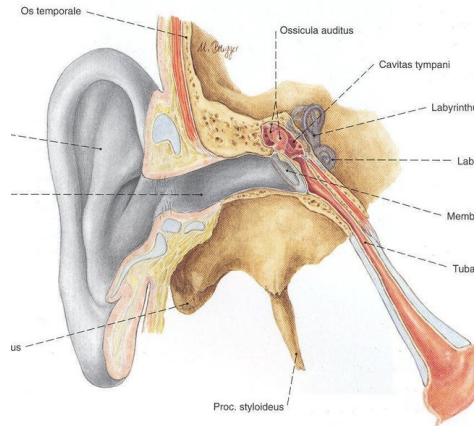


Endo- (prefix)
inside, within
e.g. *endocarditis*

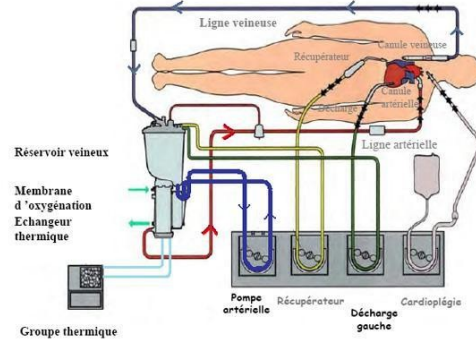


EXTERNAL POSITION

Externus, a, um
outward, external
e.g. meatus acusticus
externus



Extra- (prefix)
Outside, beyond
e.g. circulatio
extracorporalis



Ecto-/exo- (prefix)
Outermost, external
e.g. ectoparasitus; neurosis
exogenes



A grayscale photograph of a doctor in a white coat using a stethoscope to examine an elderly patient's chest. The patient is wearing a plaid shirt over a white t-shirt. The scene is set against a plain, light background.

MEDICAL JEOPARDY

Expressing Position In Medical Terminology



Blank white box

Blank white box

Blank white box

Blank white box

Blank white box

Blank white box

Blank white box

Blank white box

Blank white box

Blank white box

Blank white box

Blank white box

Blank white box

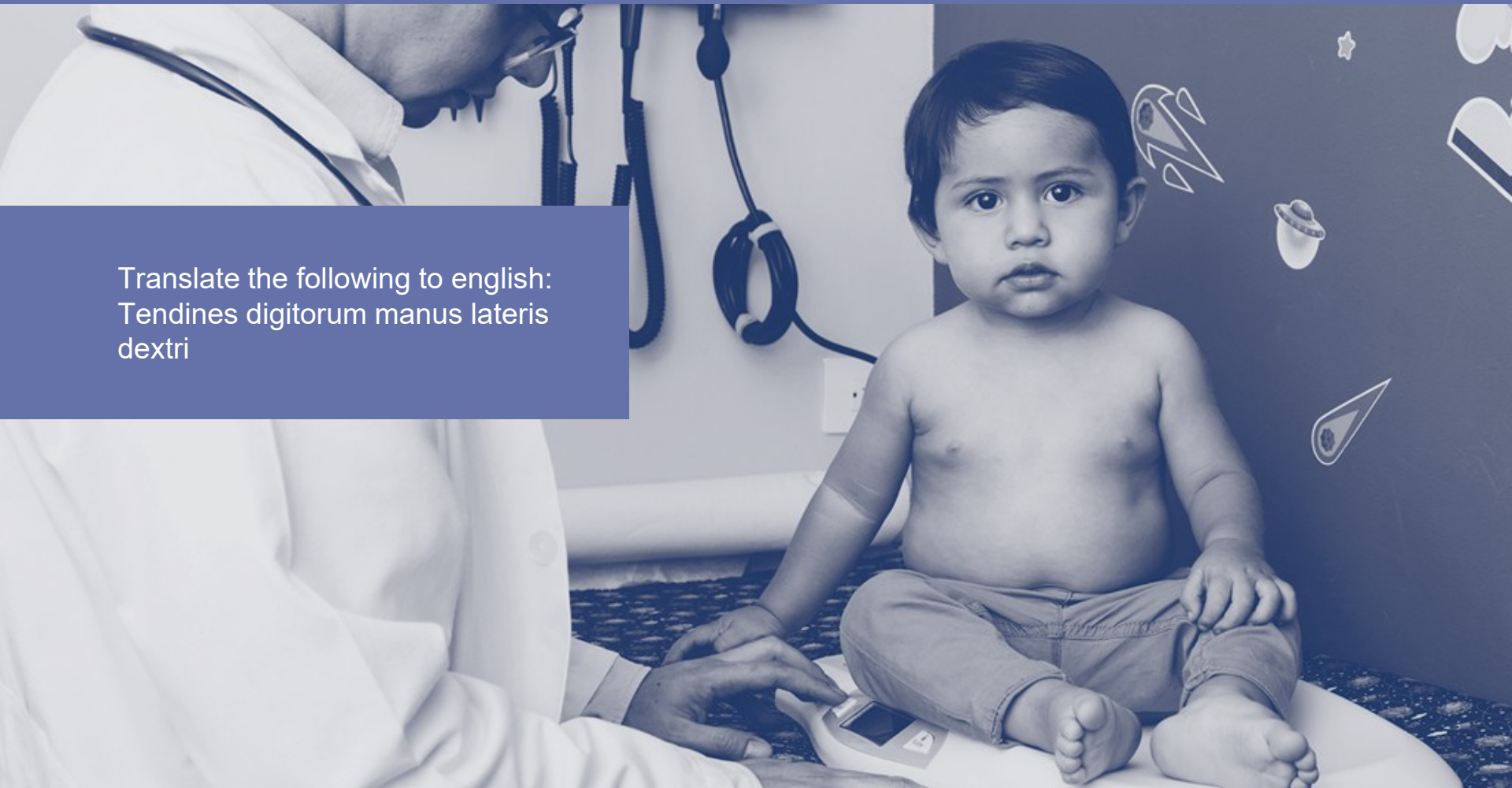
Blank white box

Blank white box

Blank white box



Translate the following to english:
Tendines digitorum manus lateris
dextri





Tendons of the fingers of the right hand





Fill in the blank:
----- post resectionem
pulmonis lateris dextri propeter
metastases



Fill in the blank:
----- post resectionem
pulmonis lateris dextri propter
metastases

Status post resectionem pulmonis lateris dextri propter metastases

A grayscale photograph of a medical professional's hands holding a patient's hand. A blood pressure cuff is visible on the patient's arm. The image is overlaid with a semi-transparent blue rectangle containing text.

Translate the following to Latin:
Trochlea of the middle phalanx

A grayscale photograph of a medical professional's hands holding a patient's arm. A blood pressure cuff is visible on the patient's arm, and a stethoscope is nearby. The image is overlaid with a semi-transparent blue rectangle containing text.

Answer:
Trochlea phalangis mediae



Name three adjectives of the 3rd declension that has two gender forms and describes position

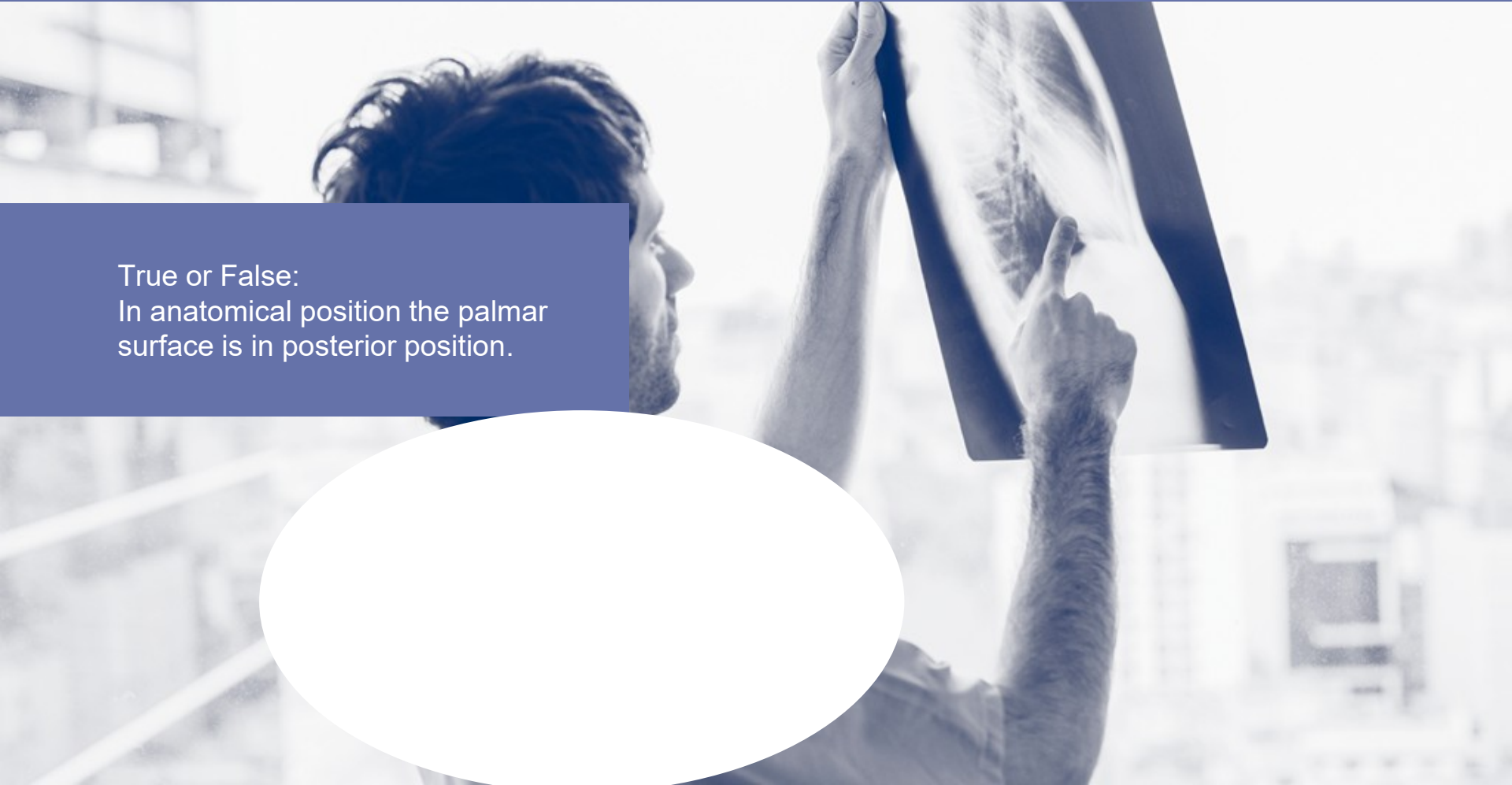


Name three adjectives of the 3rd declension that has two gender forms and describes position

Centralis, e
Localis, e
Medialis, e



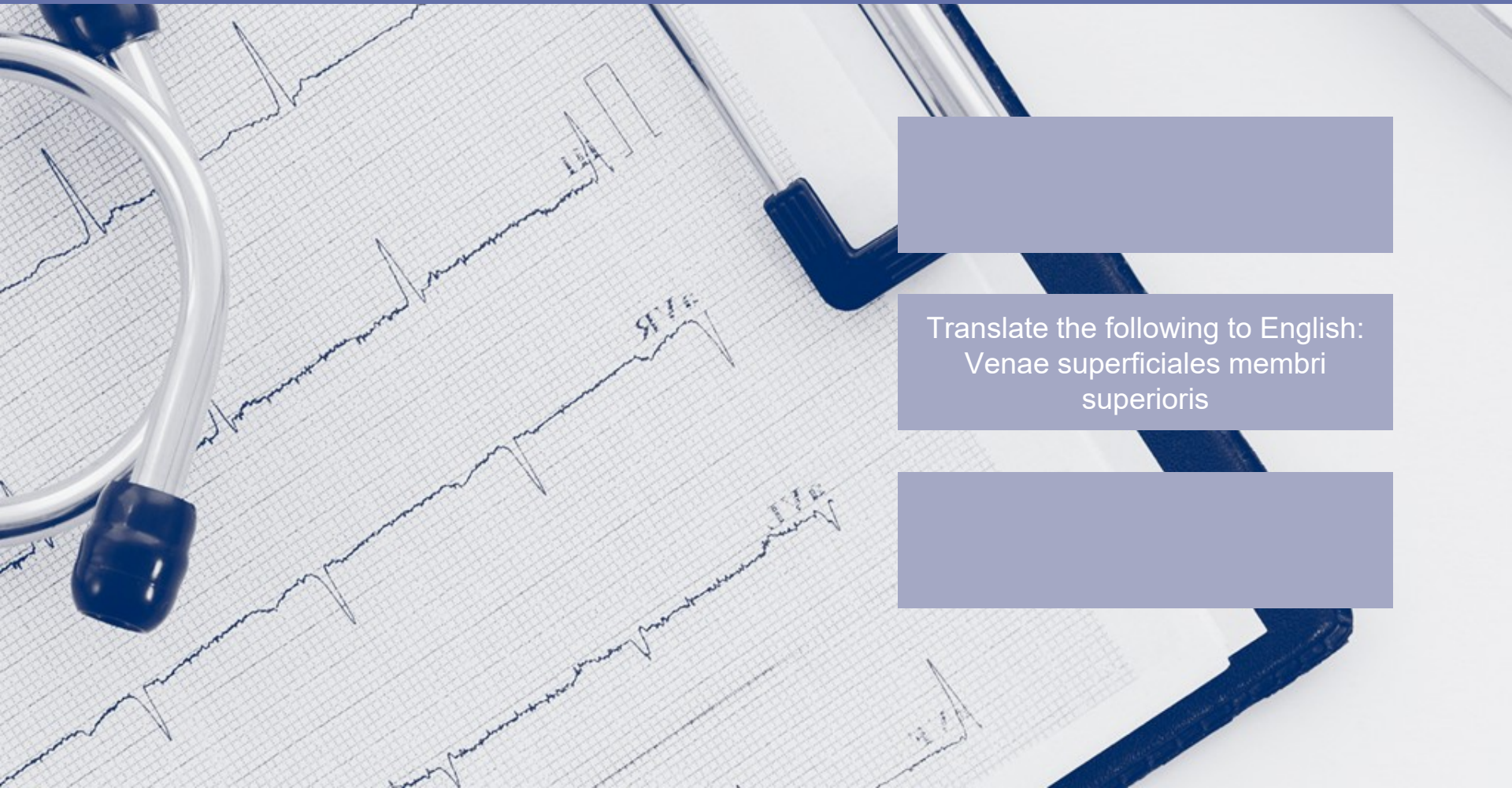
True or False:
In anatomical position the palmar
surface is in posterior position.





Answer:
False





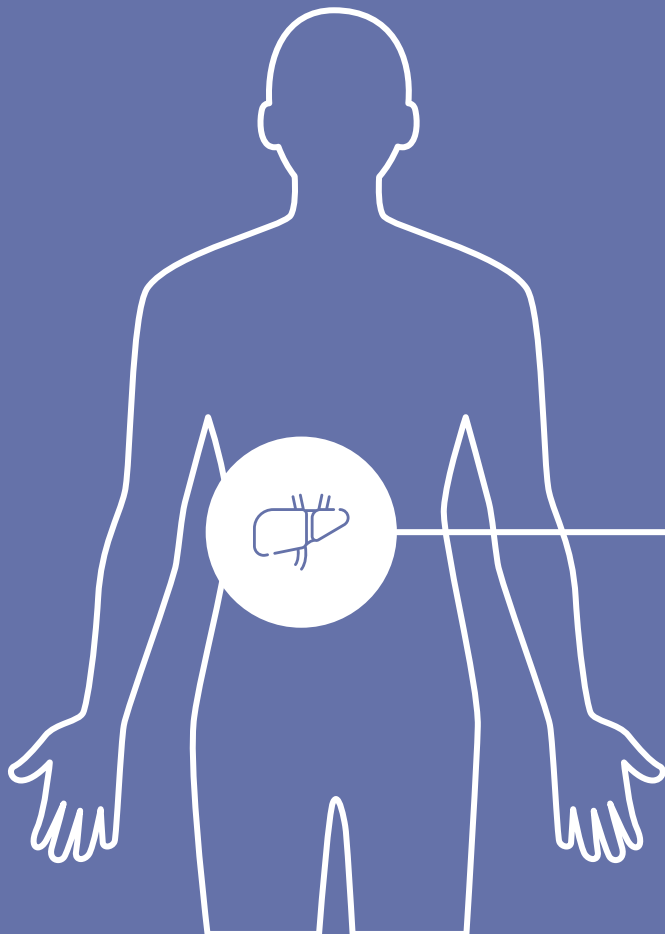
Translate the following to English:
Venae superficiales membri superioris



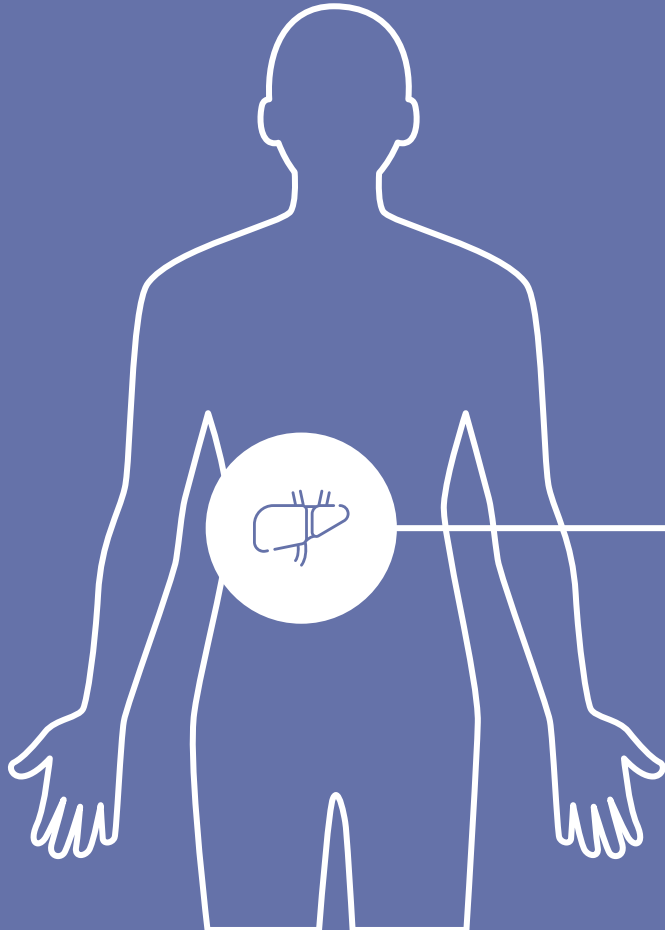


Superficial veins of upper limb





Last week recap:
Form the comparative and
superlative of the following prefix:
supra-



Comparative: superior, ius
Superlative: supremus, a, um



anterior, ius

Fill in the blank with the word given:
peritoneum parietale -----





peritoneum parietale anterius





Translate the following to latin:
posterior deep temporal artery



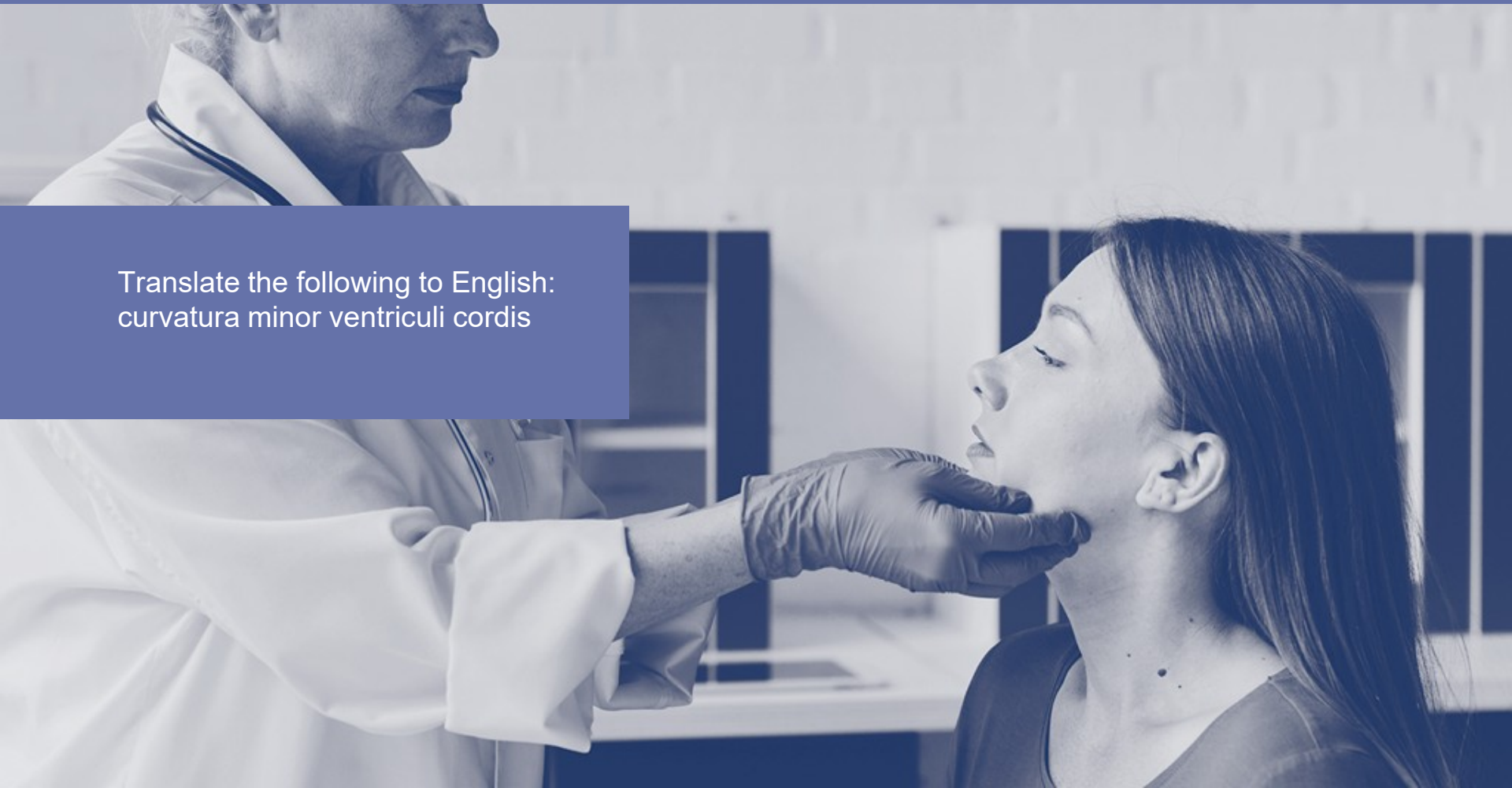
Translate the following to latin:
posterior deep temporal artery

arteria temporalis profunda
posterior





Translate the following to English:
curvatura minor ventriculi cordis





lesser curvature of ventricle of heart



THANKS