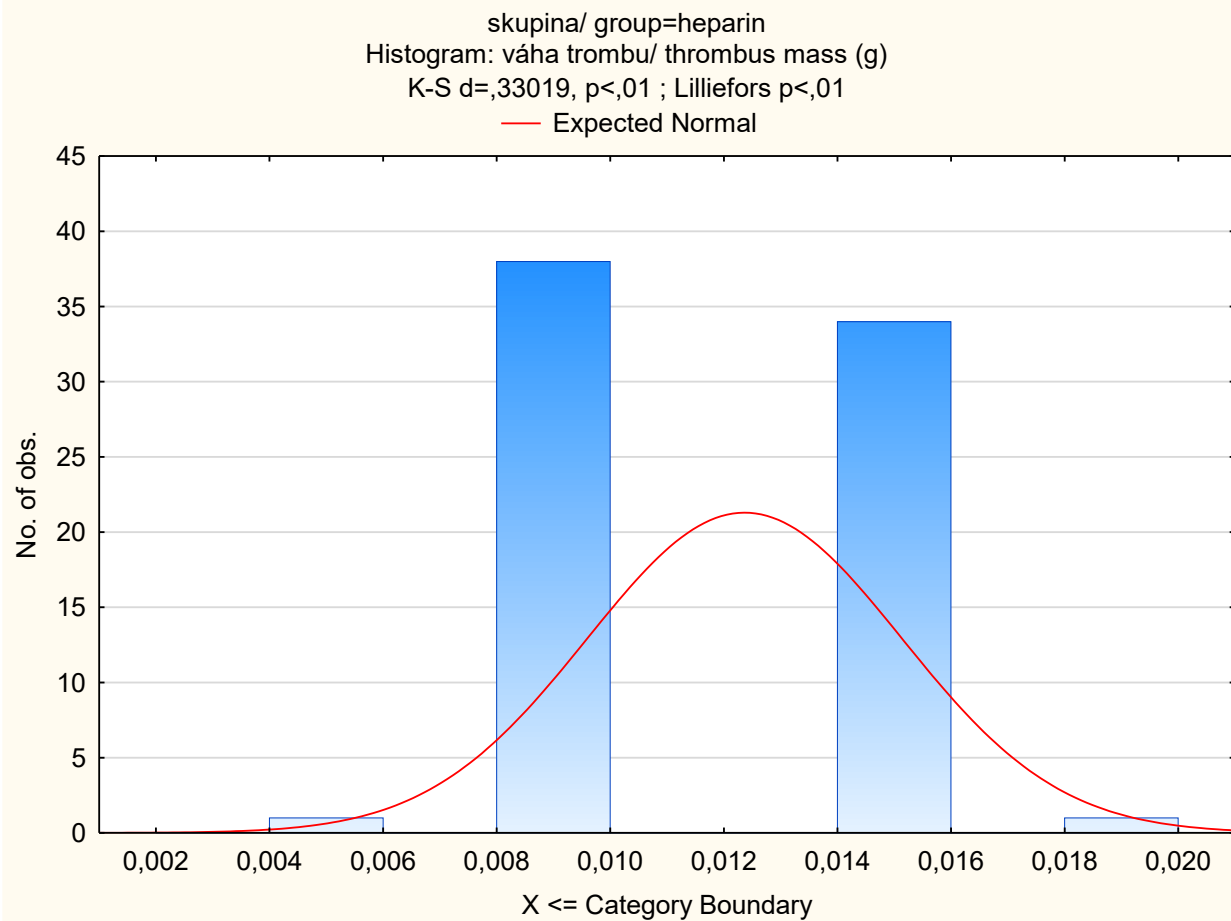


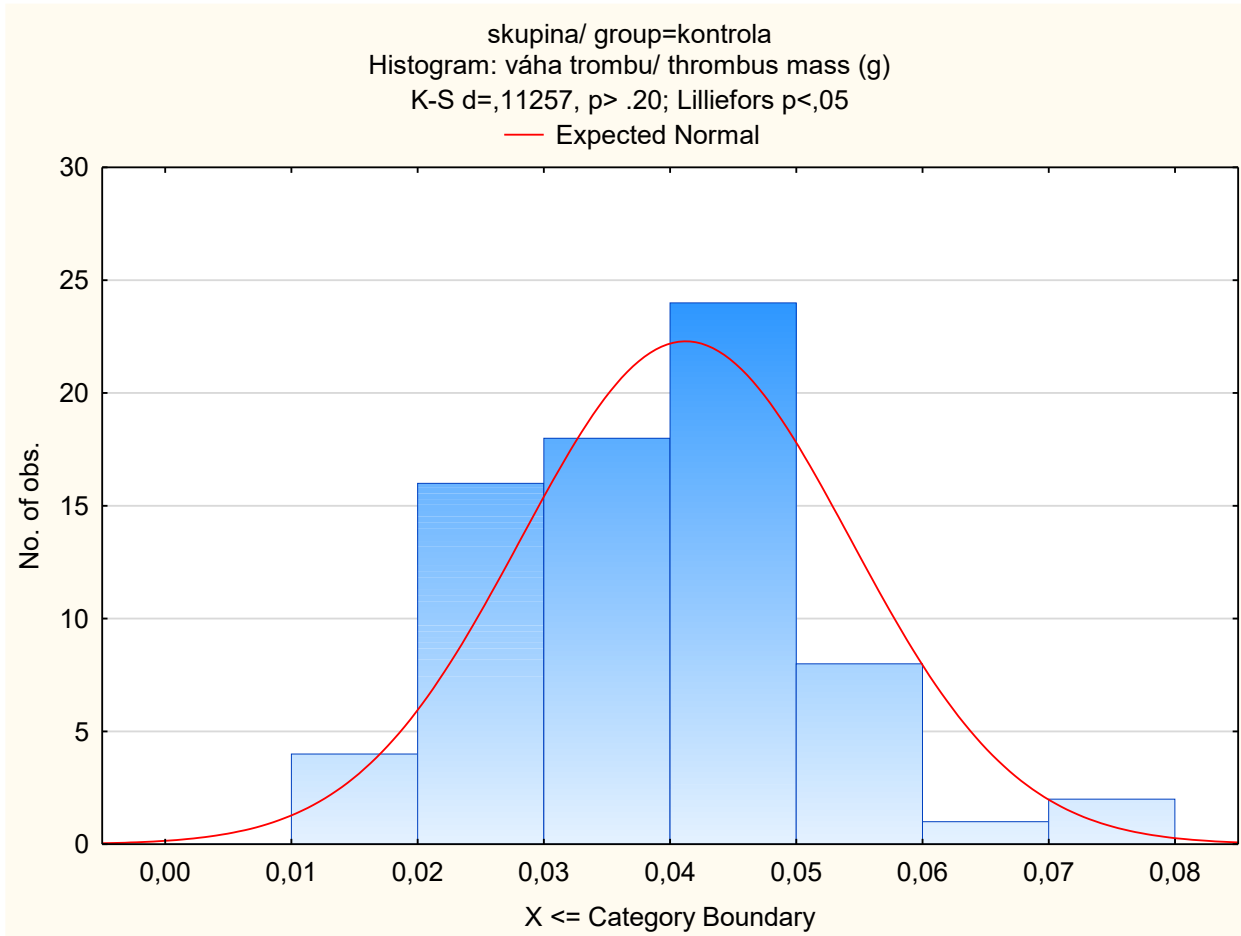
Deskriptivní statistika + histogramy / descriptive statistics + histograms:

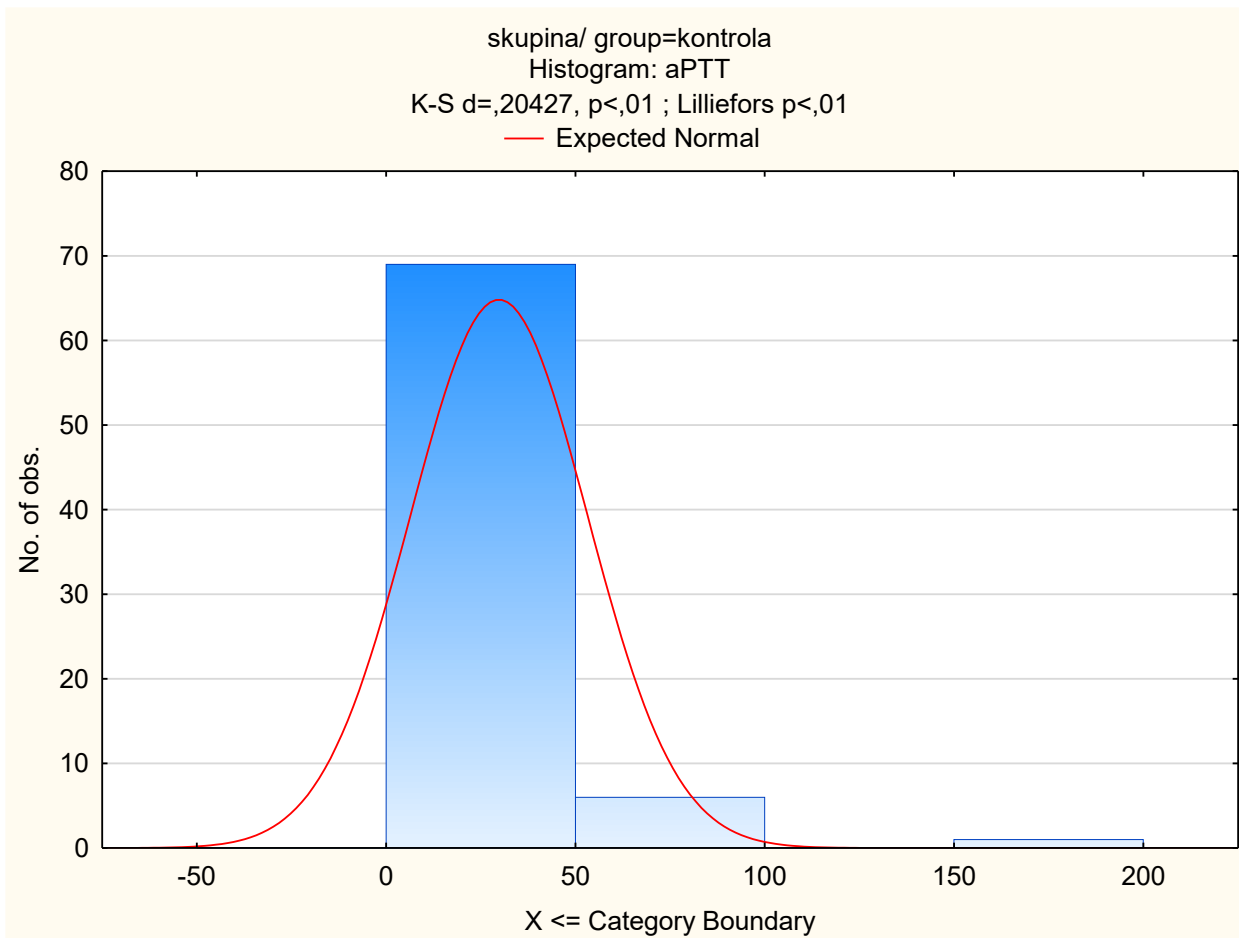
Variable	skupina/ group=heparin Descriptive Statistics (venozní trombóza2023_corr)										
	Valid N	Mean	Median	Mode	Frequency of Mode	Minimum	Maximum	Lower Quartile	Upper Quartile	Std.Dev.	Standard Error
váha trombu/ thrombus mass (g)	74	0,0124	0,0100	,0100000	38	0,0050	0,0200	0,0100	0,0150	0,002773	0,000322
aPTT	78	200,0000	200,0000	200,0000	78	200,0000	200,0000	200,0000	200,0000	0,000000	0,000000



aPTT ve skupině „heparin“: nelze (všechny hodnoty = 200 s) / aPTT in “heparin“ group: not available (all values = 200 s)

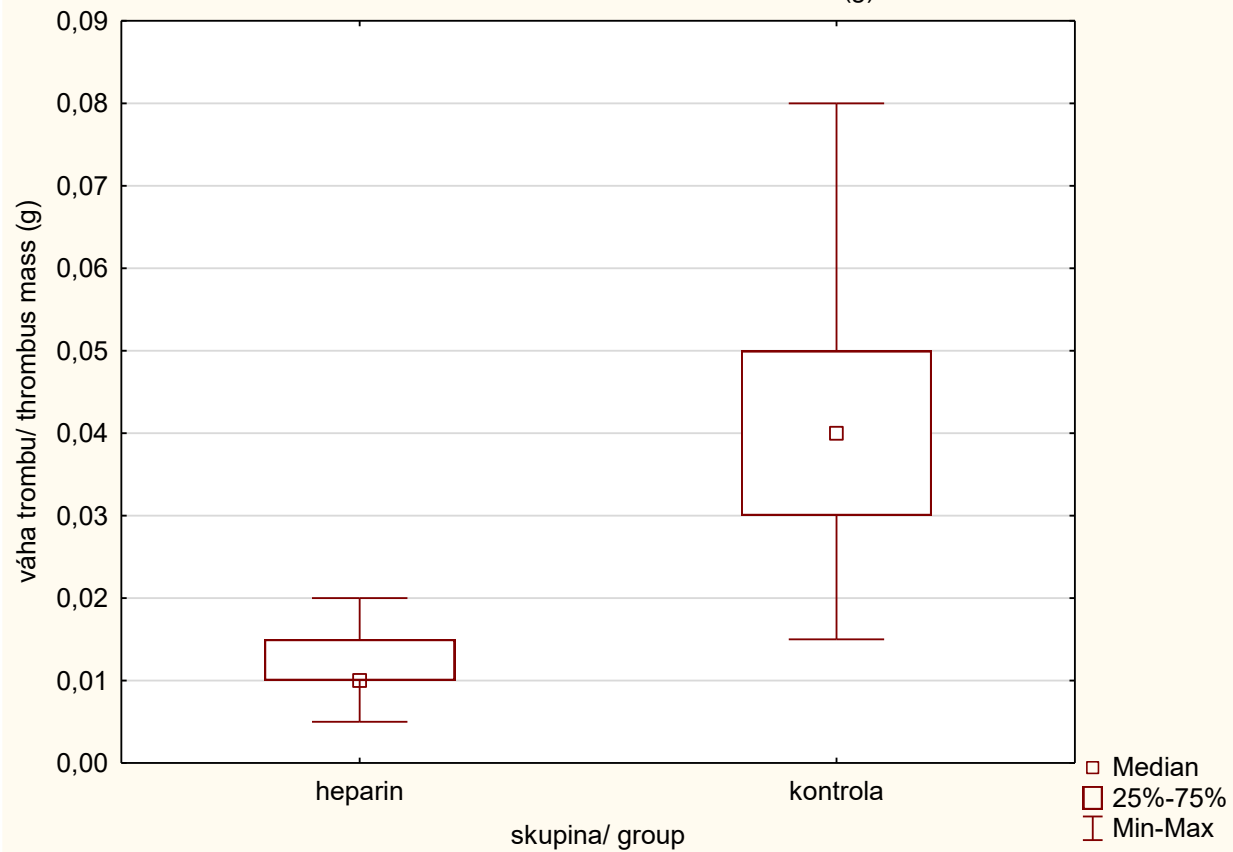
		skupina/ group=kontrola Descriptive Statistics (venozní trombóza2023_corr)									
Variable	Valid N	Mean	Median	Mode	Frequency of Mode	Minimum	Maximum	Lower Quartile	Upper Quartile	Std.Dev.	Standard Error
váha trombu/ thrombus mass (g)	73	0,04123	0,04000	,045000	15	0,015000	0,0800	0,03000	0,05000	0,01306	0,001529
aPTT	76	29,81316	24,80000	24,80000	3	5,800000	200,0000	19,05000	33,20000	23,38789	2,682775

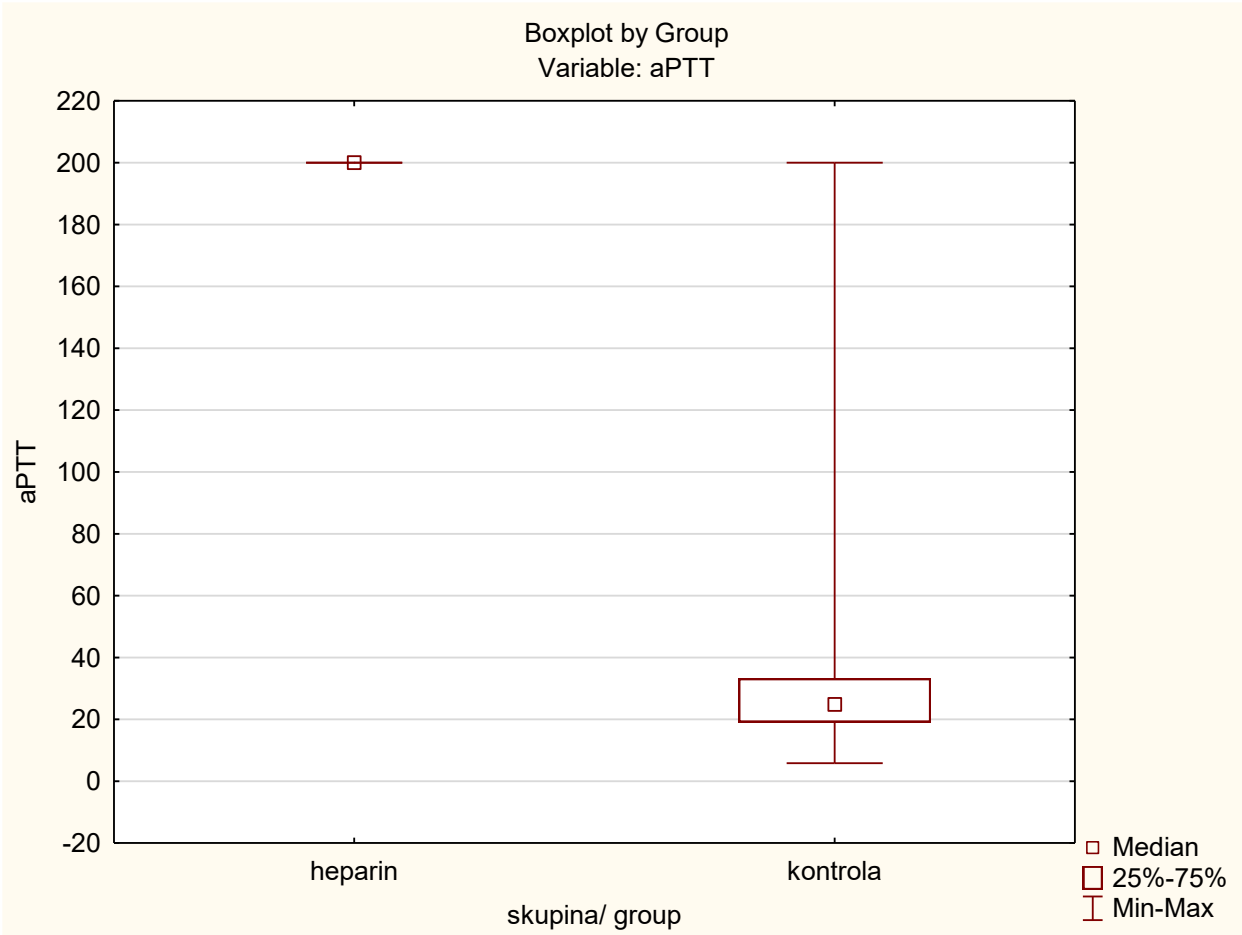




Srovnání – váha trombu + aPTT skupina heparin vs. kontroly: Mann-Whitney U-test (+ Kolmogorov-Smirnov test u aPTT) / Comparison – thrombus mass heparin group vs. controls: Mann-Whitney U-test (+ Kolmogorov-Smirnov test in aPTT)

Boxplot by Group
Variable: váha trombu/ thrombus mass (g)

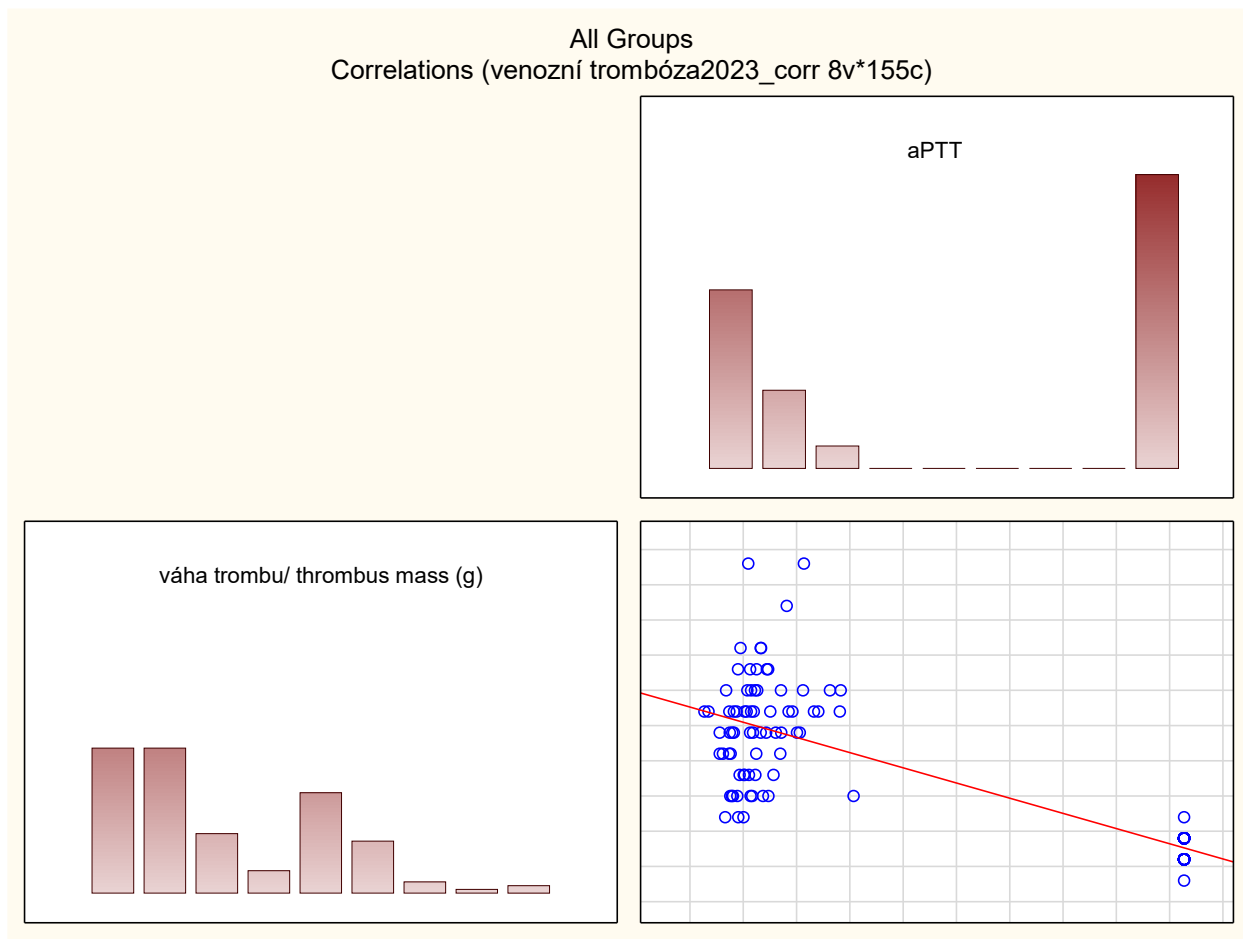




		Mann-Whitney U Test (w/ continuity correction) (venozní trombóza2023_corr)								
		By variable skupina/ group								
		Marked tests are significant at p <,05000								
variable		Rank Sum heparin	Rank Sum kontrola	U	Z	p-value	Z adjusted	p-value	Valid N heparin	Valid N kontrola
váha trombu/ thrombus mass (g)		2794,500	8083,500	19,50000	-10,3867	0,000000	-10,5627	0,000000	74	73
aPTT		8970,000	2965,000	39,00000	10,5687	0,000000	11,3635	0,000000	78	76

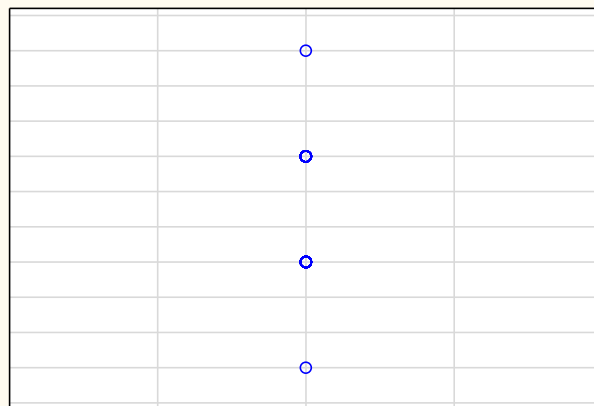
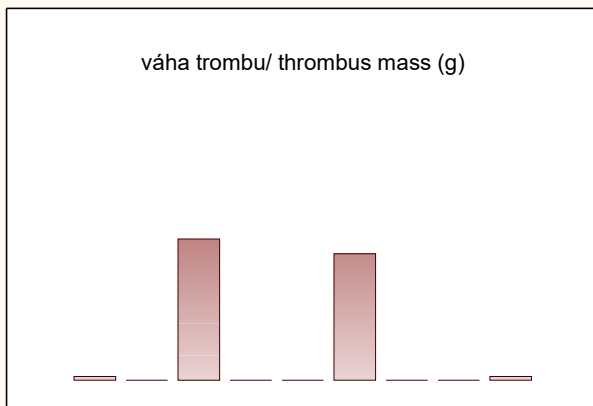
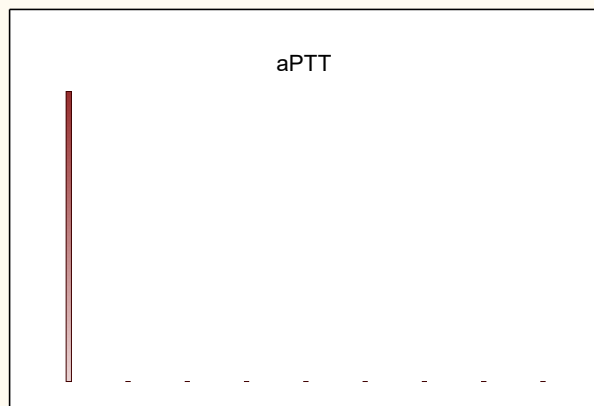
Kolmogorov-Smirnov Test (venozní trombóza2023_corr)									
By variable skupina/ group									
Marked tests are significant at p <,05000									
variable	Max Neg Differnc	Max Pos Differnc	p-value	Mean heparin	Mean kontrola	Std.Dev. heparin	Std.Dev. kontrola	Valid N heparin	Valid N kontrola
váha trombu/ thrombus mass (g)	-0,972788	0,000000	p < .001	0,0124	0,04123	0,002773	0,01306	74	73
aPTT	0,000000	0,986842	p < .001	200,0000	29,81316	0,000000	23,38789	78	76

aPTT a váha trombu: Spearmanova korelace; celý soubor + obě skupiny zvlášť / aPTT and thrombus mass, Spearman correlation; all subjects + both groups separately



Pair of Variables	All Groups Spearman Rank Order Correlations (venozní trombóza2023_corr) MD pairwise deleted Marked correlations are significant at p <,05000			
	Valid N	Spearman R	t(N-2)	p-value
váha trombu/ thrombus mass (g) & aPTT	146	-0,784526	-15,1820	0,00

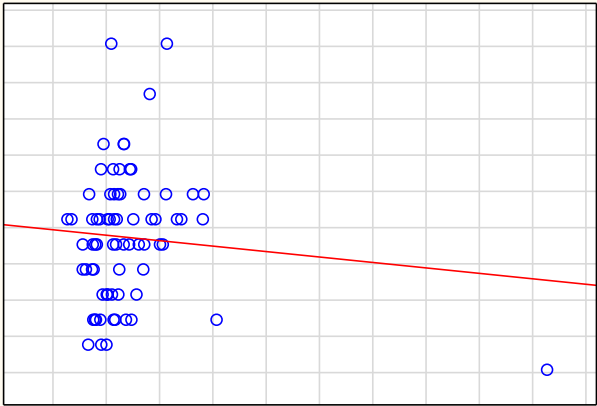
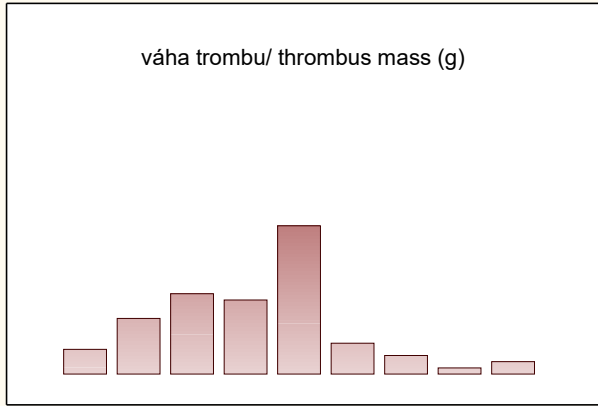
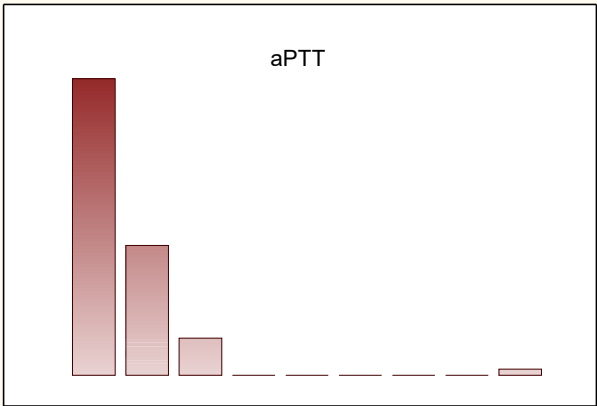
skupina/ group=heparin
Correlations (venozní trombóza2023_corr 8v*155c)



skupina/ group=heparin
 Spearman Rank Order Correlations (venozní trombóza2023_corr)
 MD pairwise deleted
 Marked correlations are significant at $p < ,05000$

Pair of Variables	Valid N	Spearman R	t(N-2)	p-value
váha trombu/ thrombus mass (g) & aPTT	74			

skupina/ group=kontrola
 Correlations (venozní trombóza2023_corr 8v*155c)



skupina/ group=kontrola
Spearman Rank Order Correlations (venozní trombóza2023_corr)
MD pairwise deleted
Marked correlations are significant at p <,05000

Pair of Variables	Valid N	Spearman R	t(N-2)	p-value
váha trombu/ thrombus mass (g) & aPTT	72	0,227188	1,951833	0,054960