

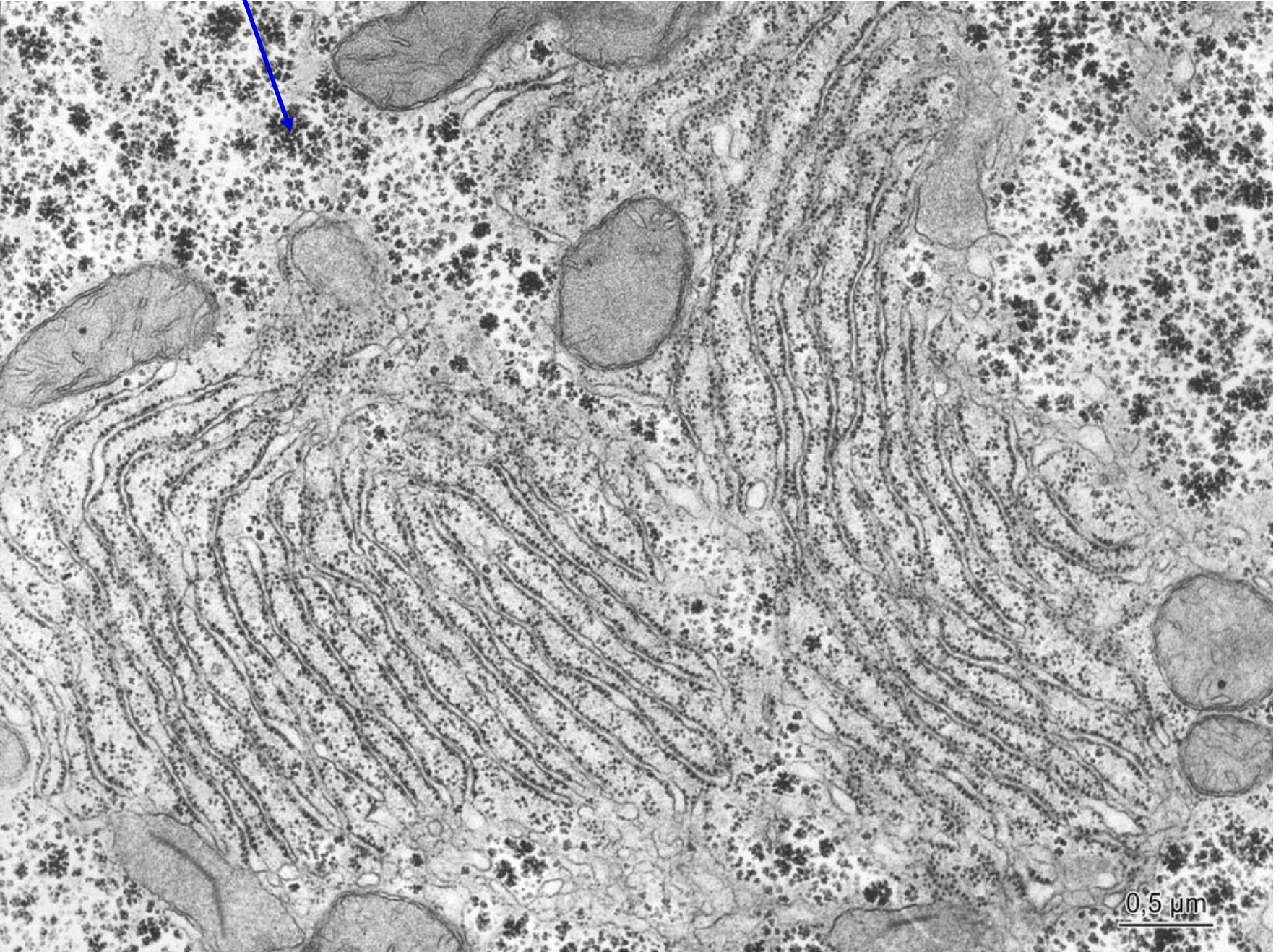
M U N I
M E D

CYTOLOGY II

Cell inclusions. Cytoskeleton. Modifications of cell surfaces. Intercellular junctions.

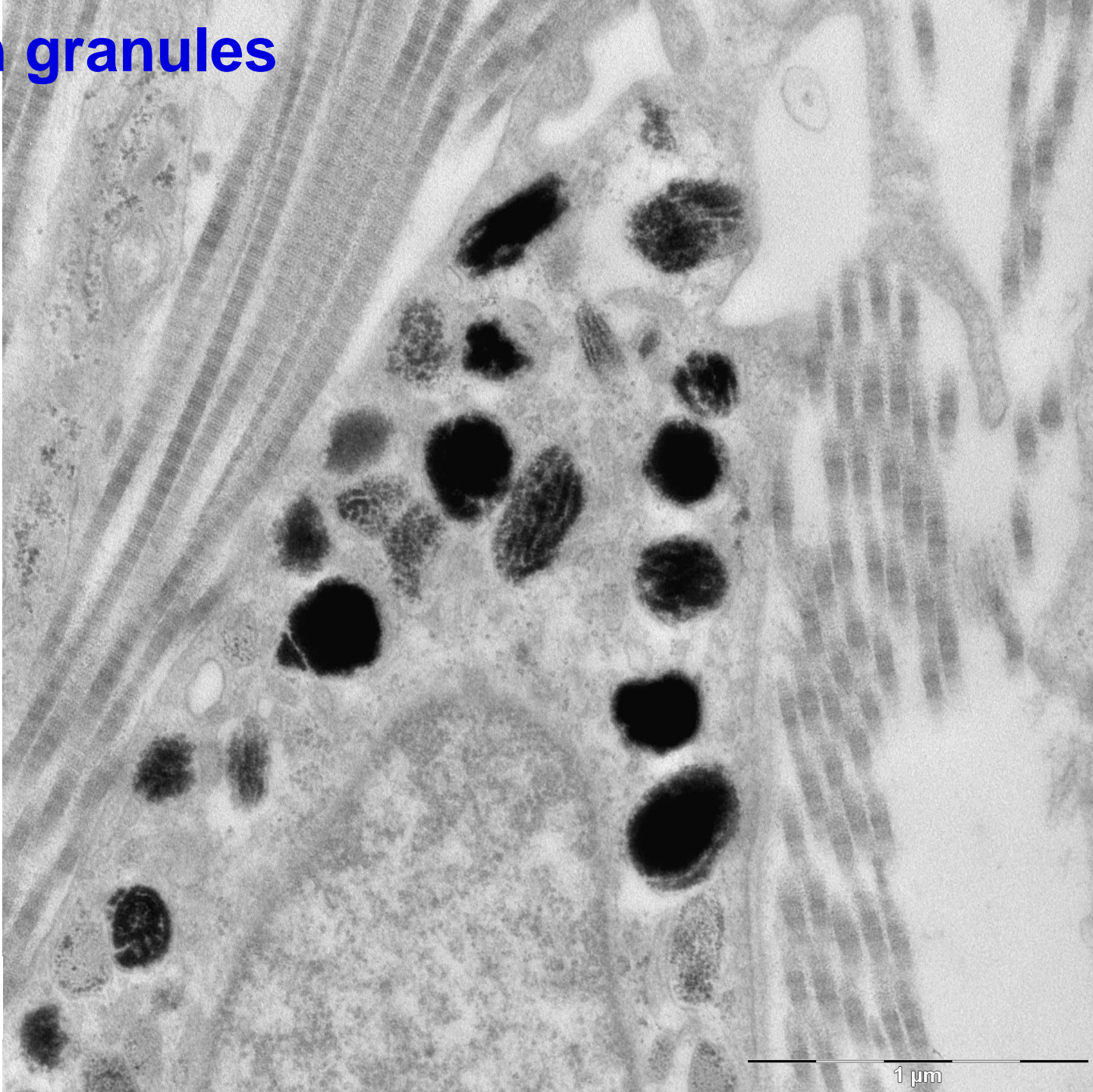
ATLAS OF CYTOLOGY AND EMBRYOLOGY

glycogen – α granules



N I
D

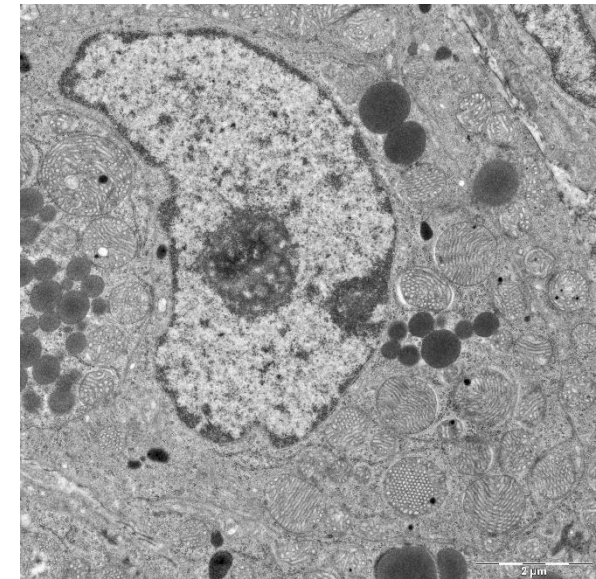
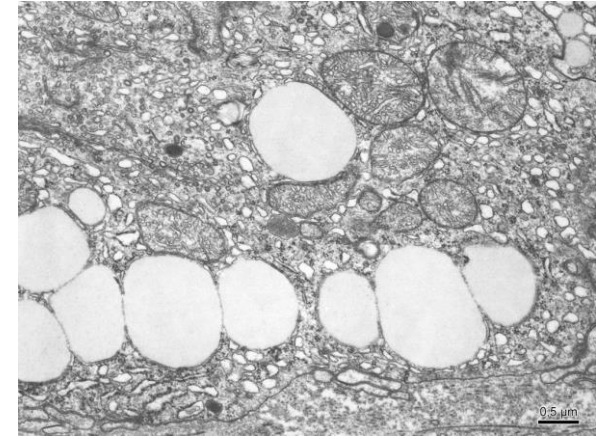
melanin granules



N I
D

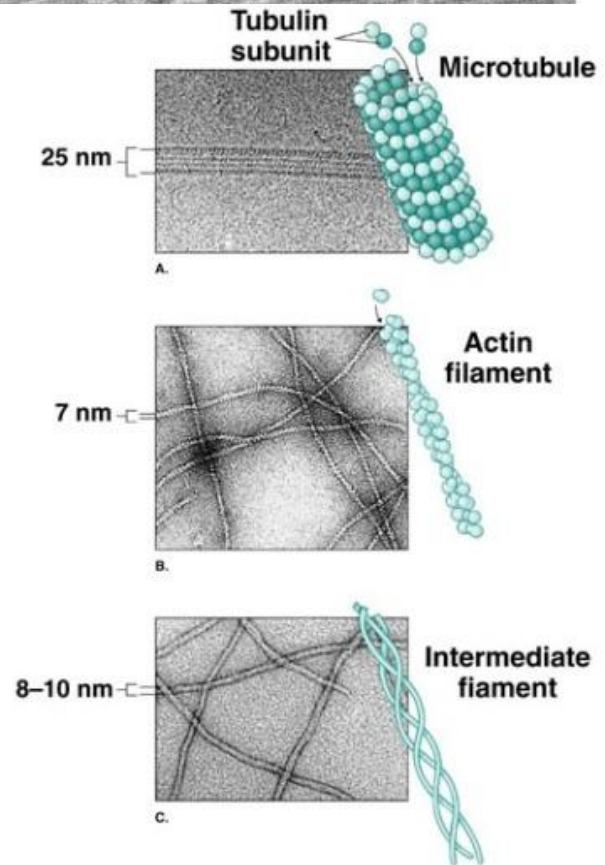
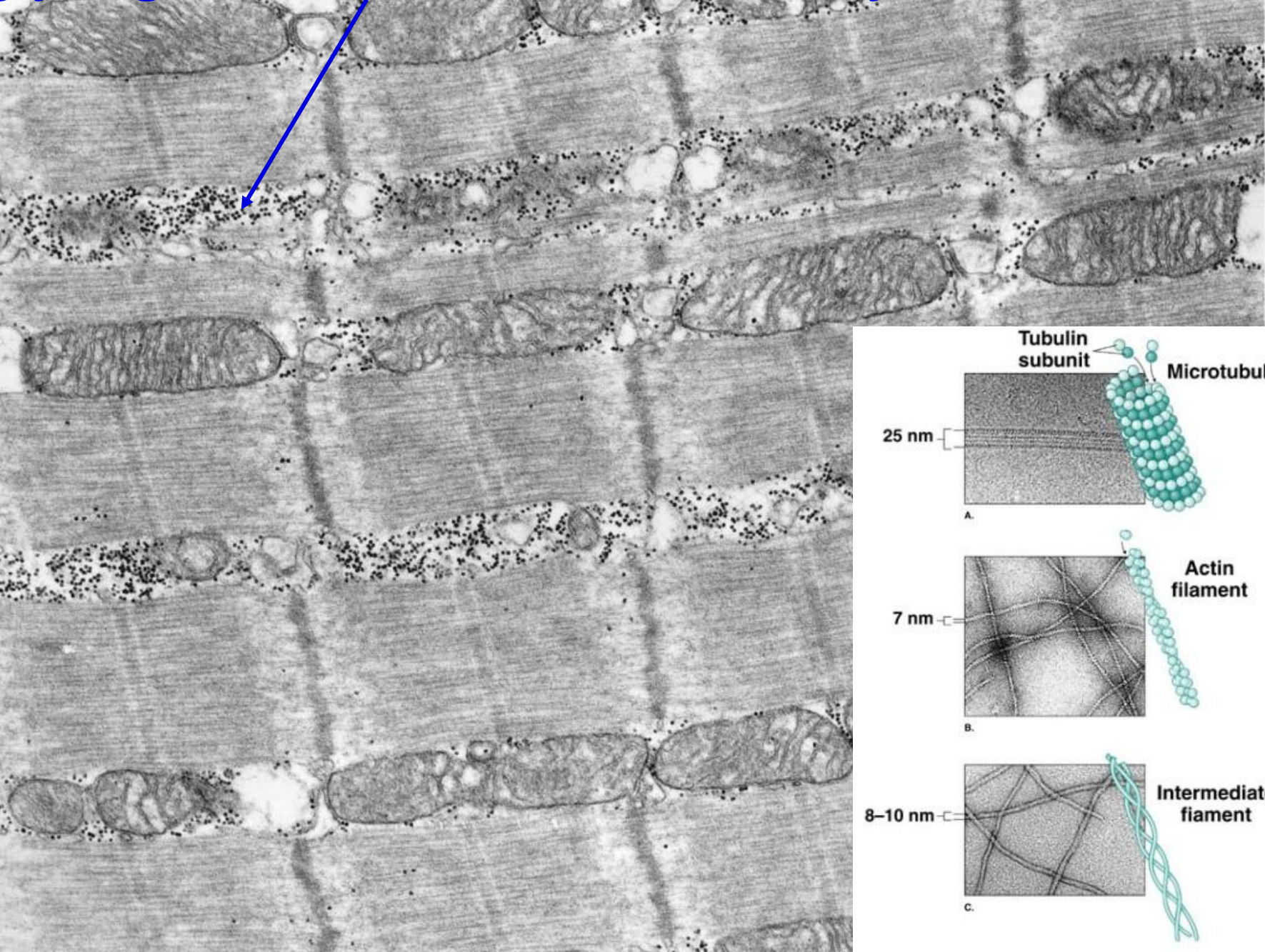
1 μ m

lipid droplets

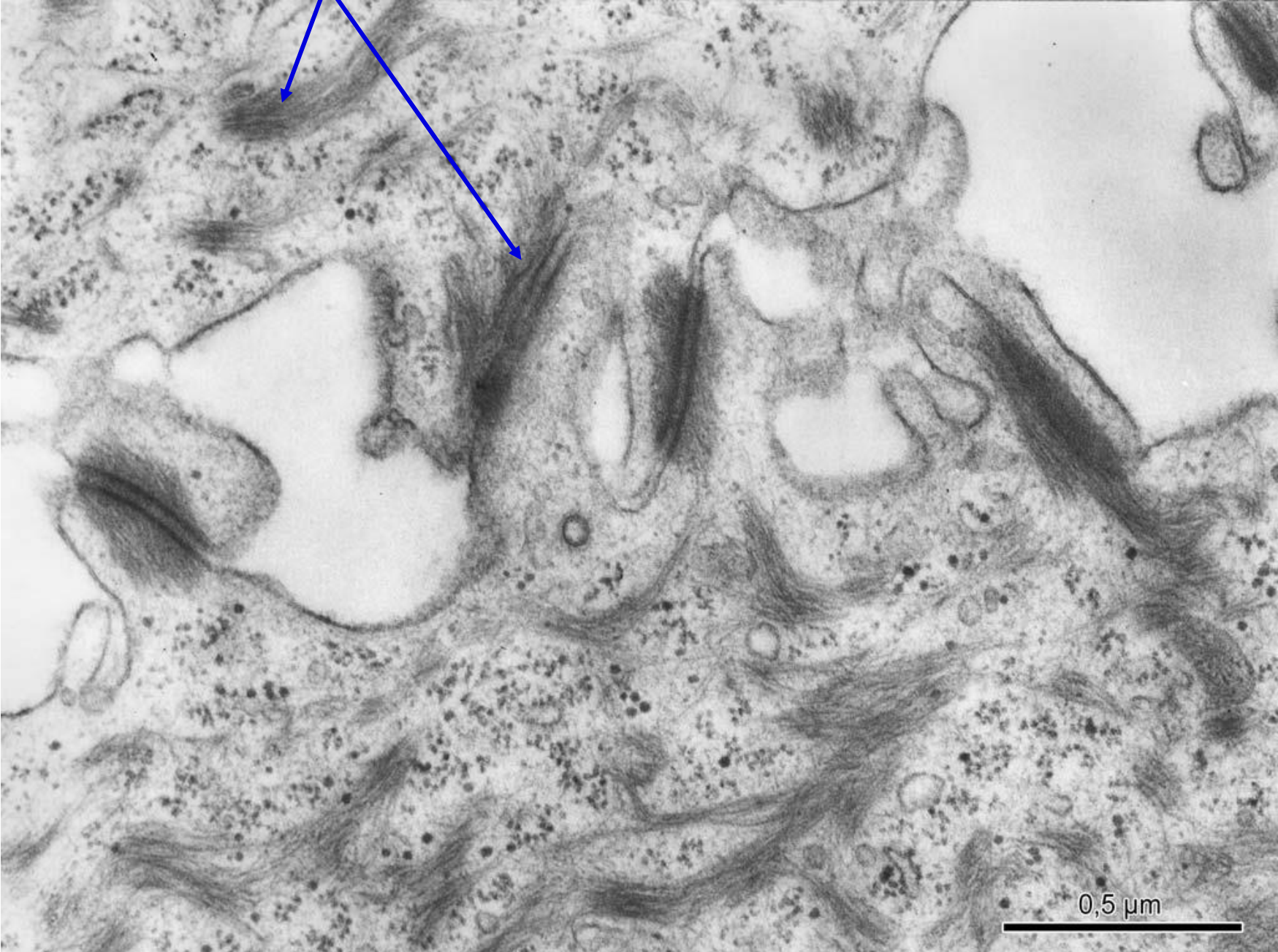


steroidogenic cells

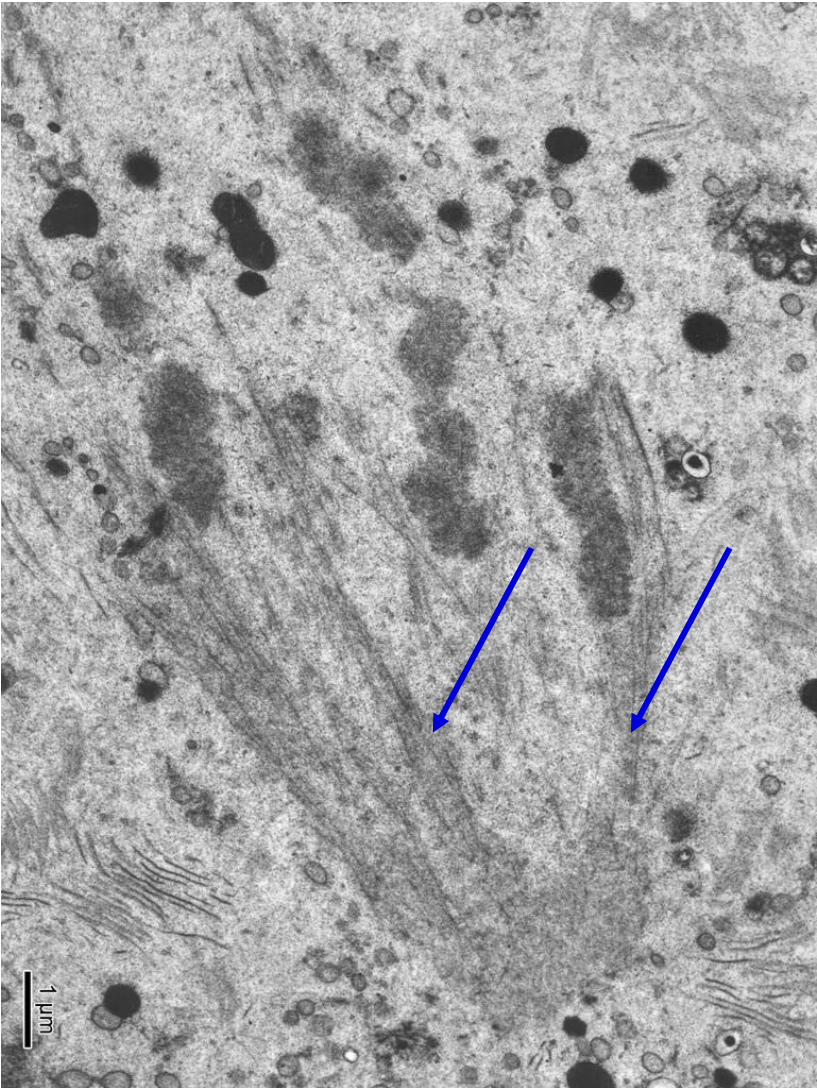
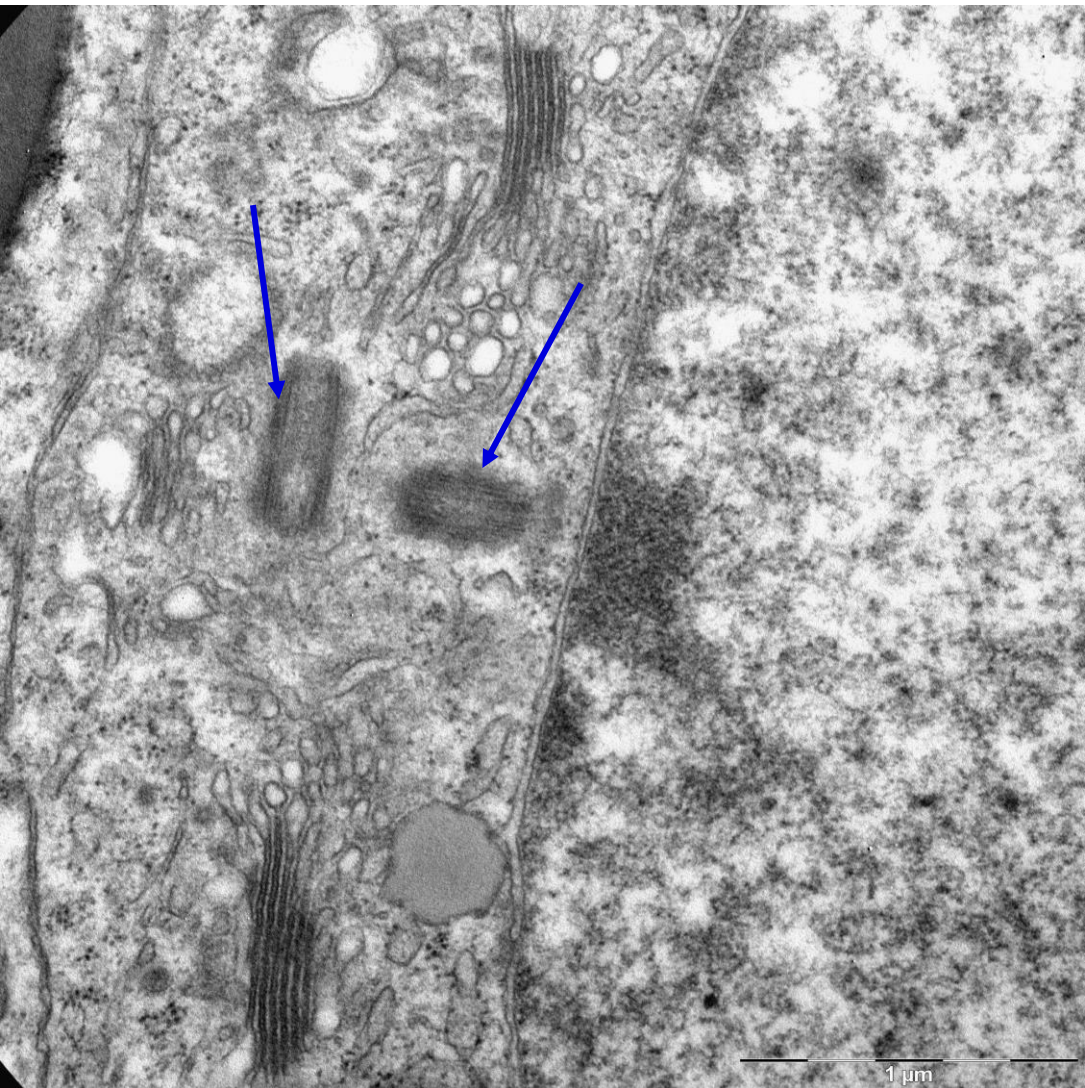
glycogen – β granules, actin and myosin filaments



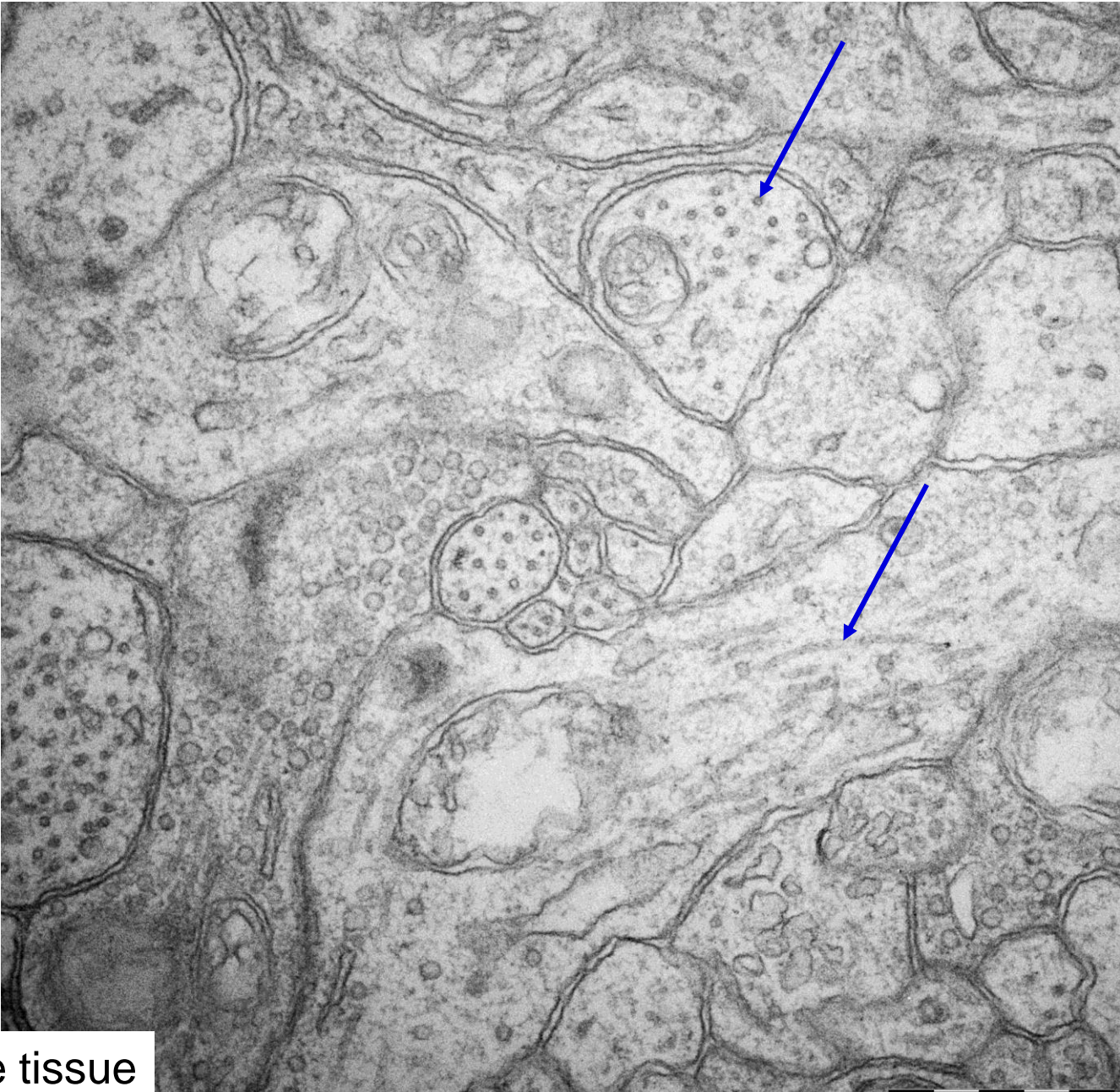
intermediate filaments



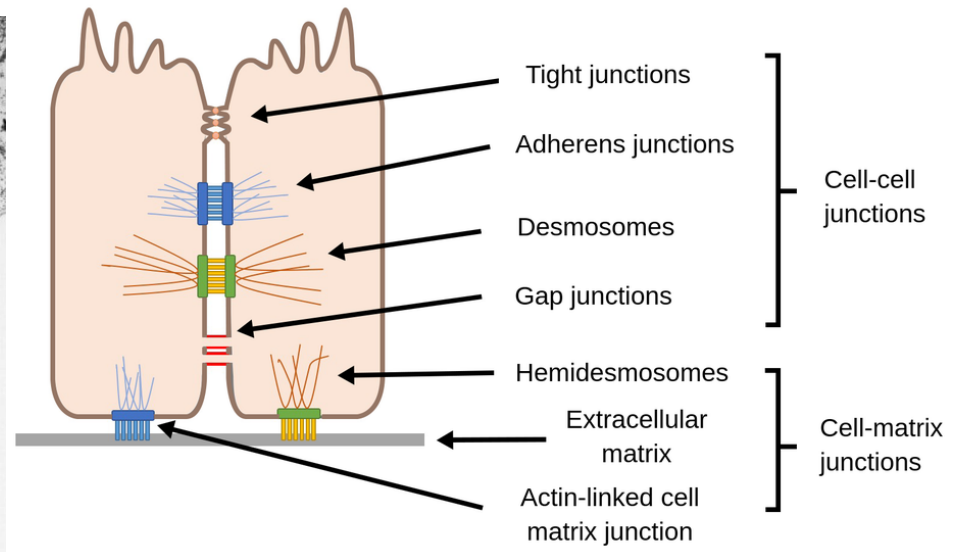
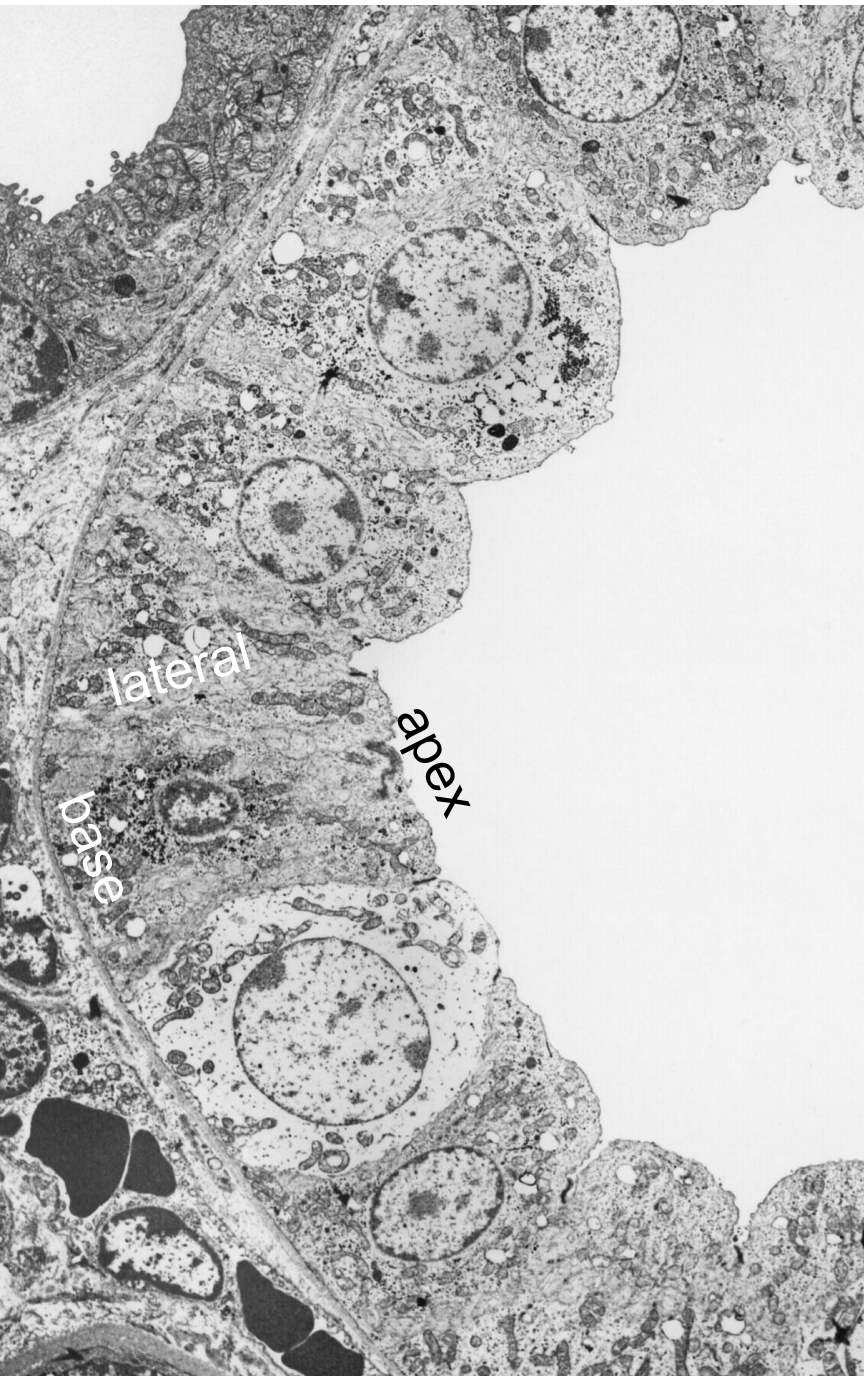
microtubules



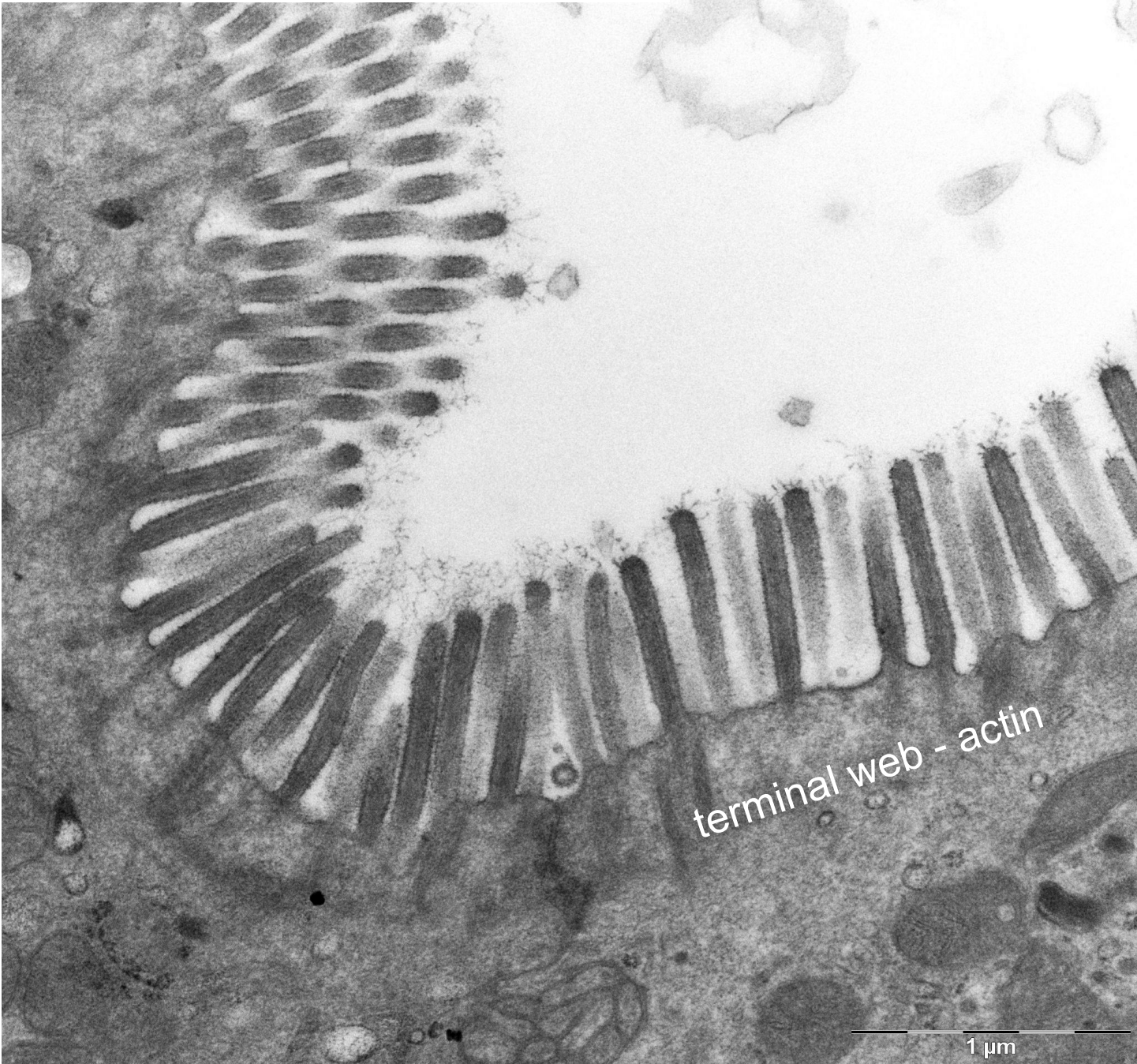
microtubules



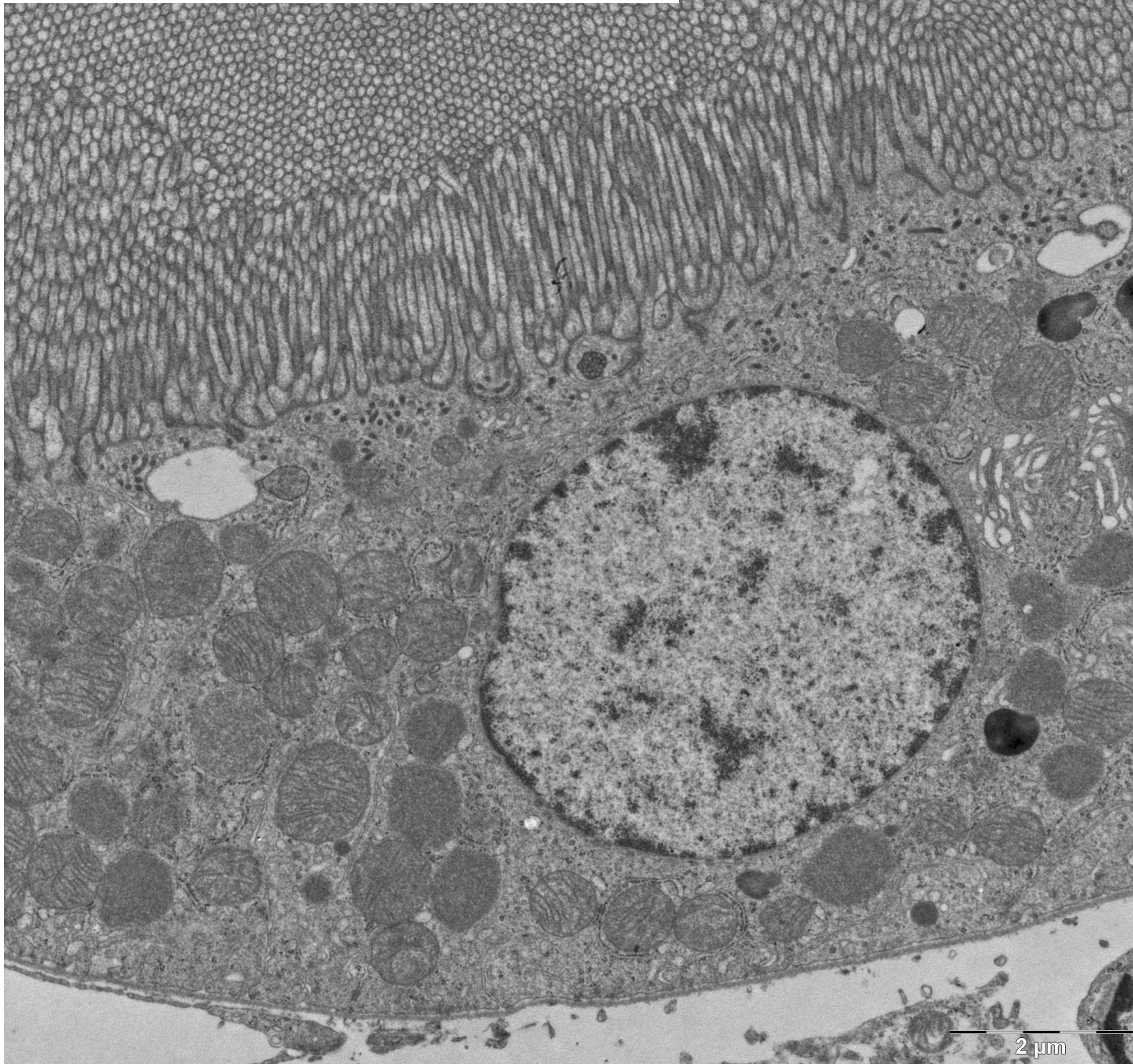
nerve tissue



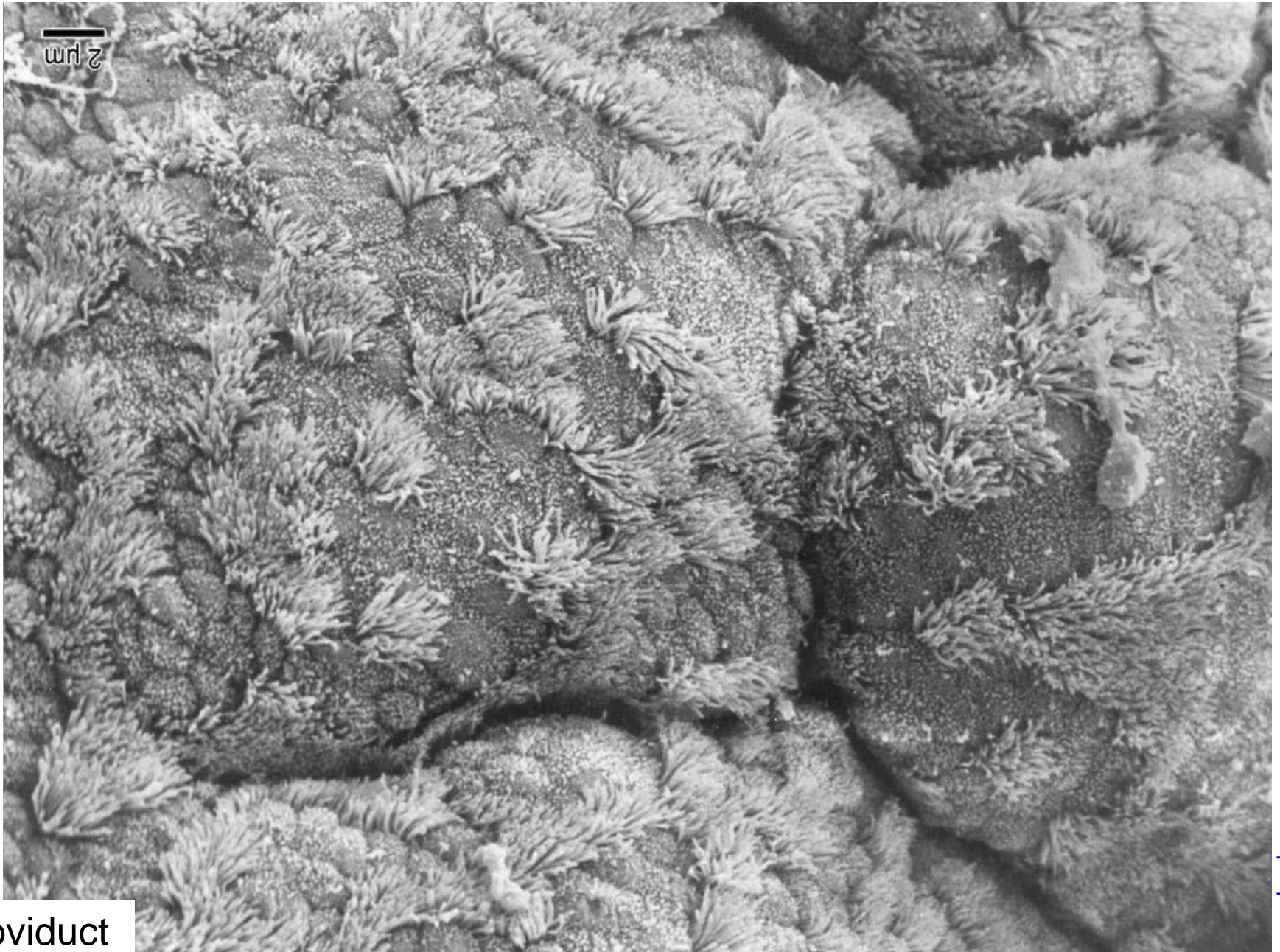
microvilli – striated border



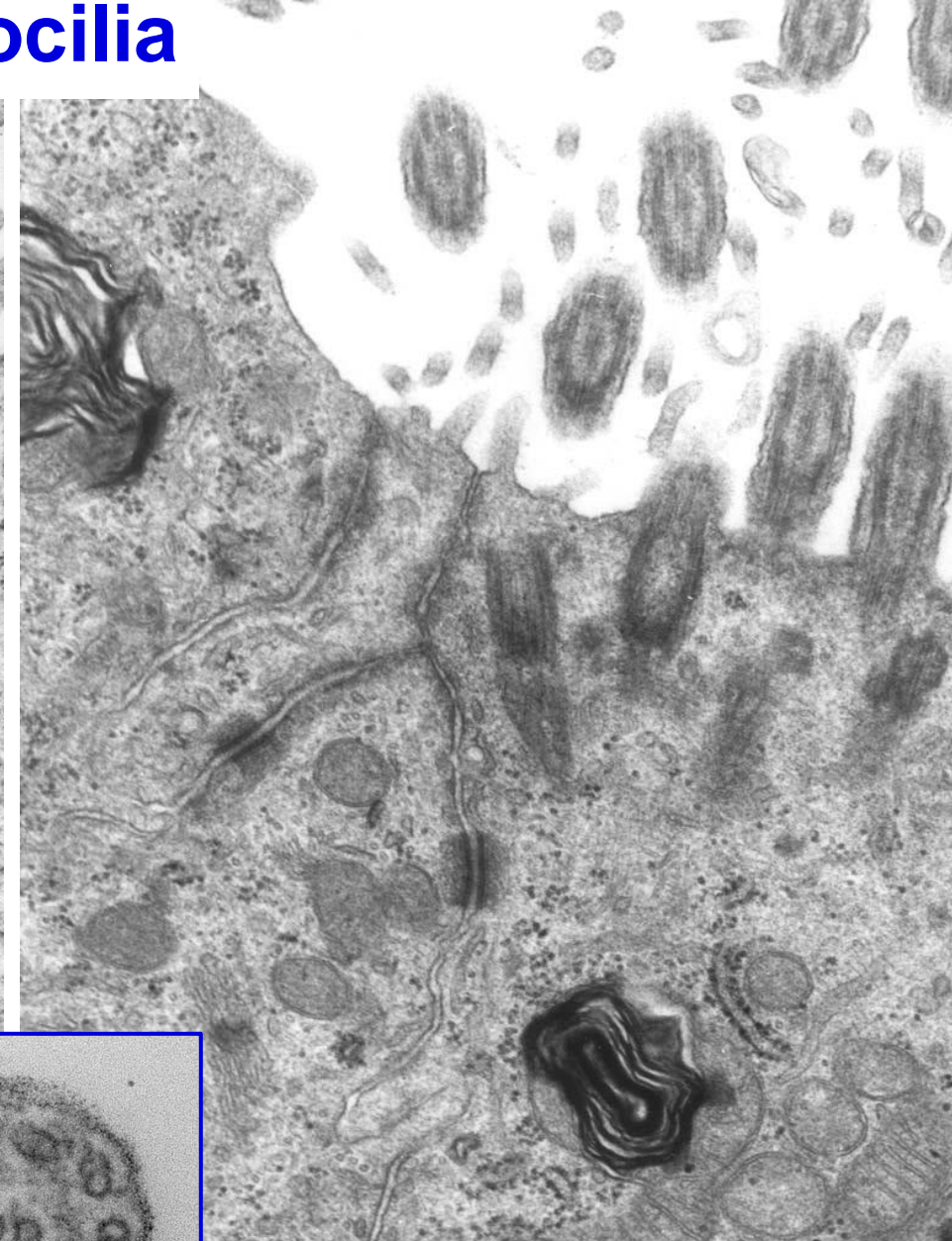
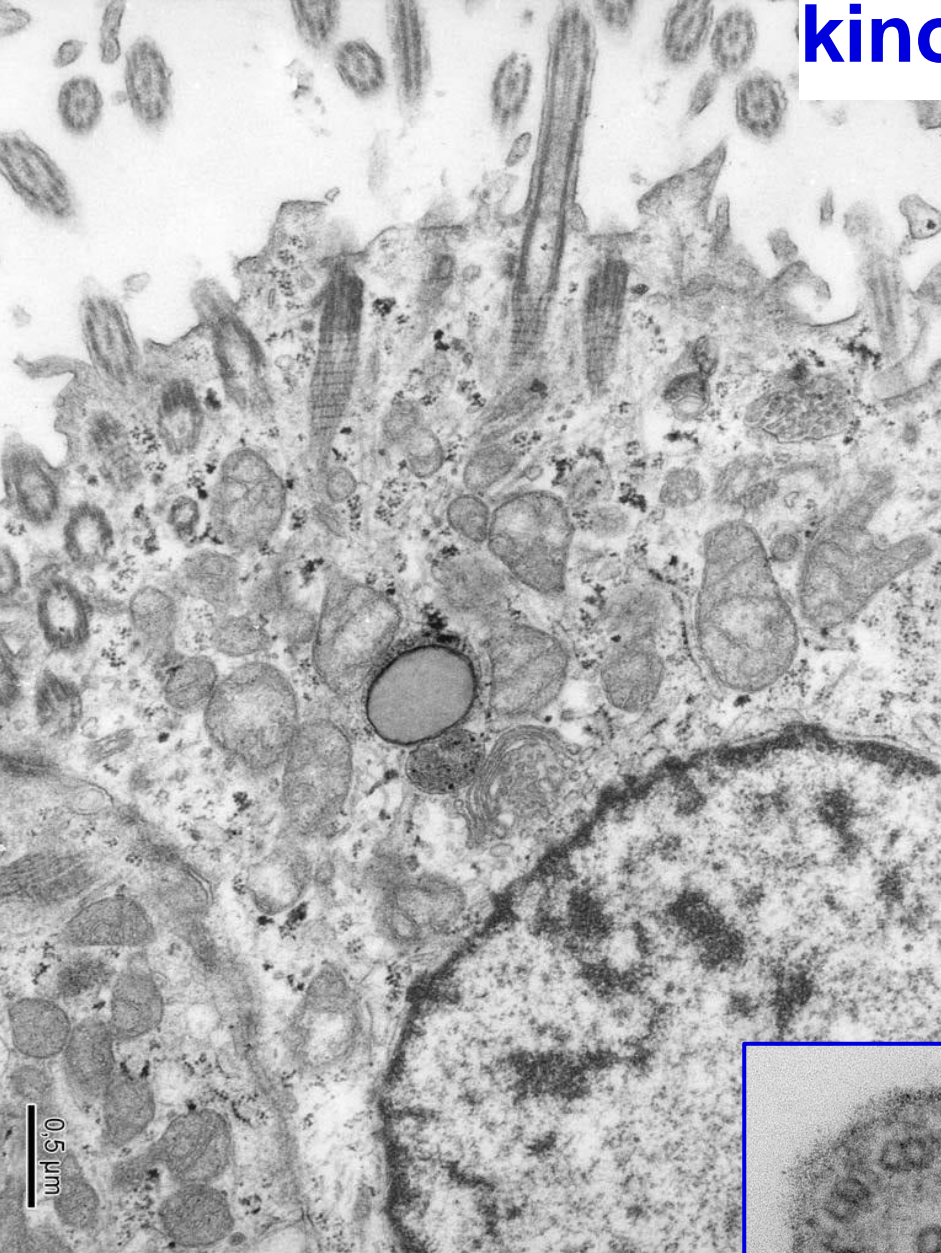
microvilli – brush border



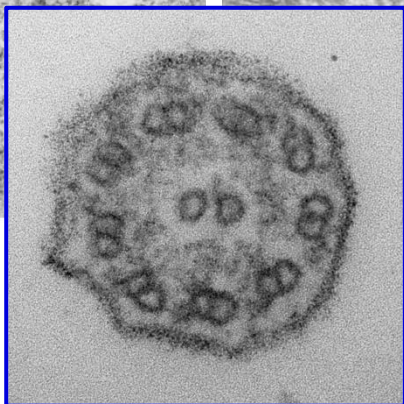
microvilli and kinocilia



kinocilia

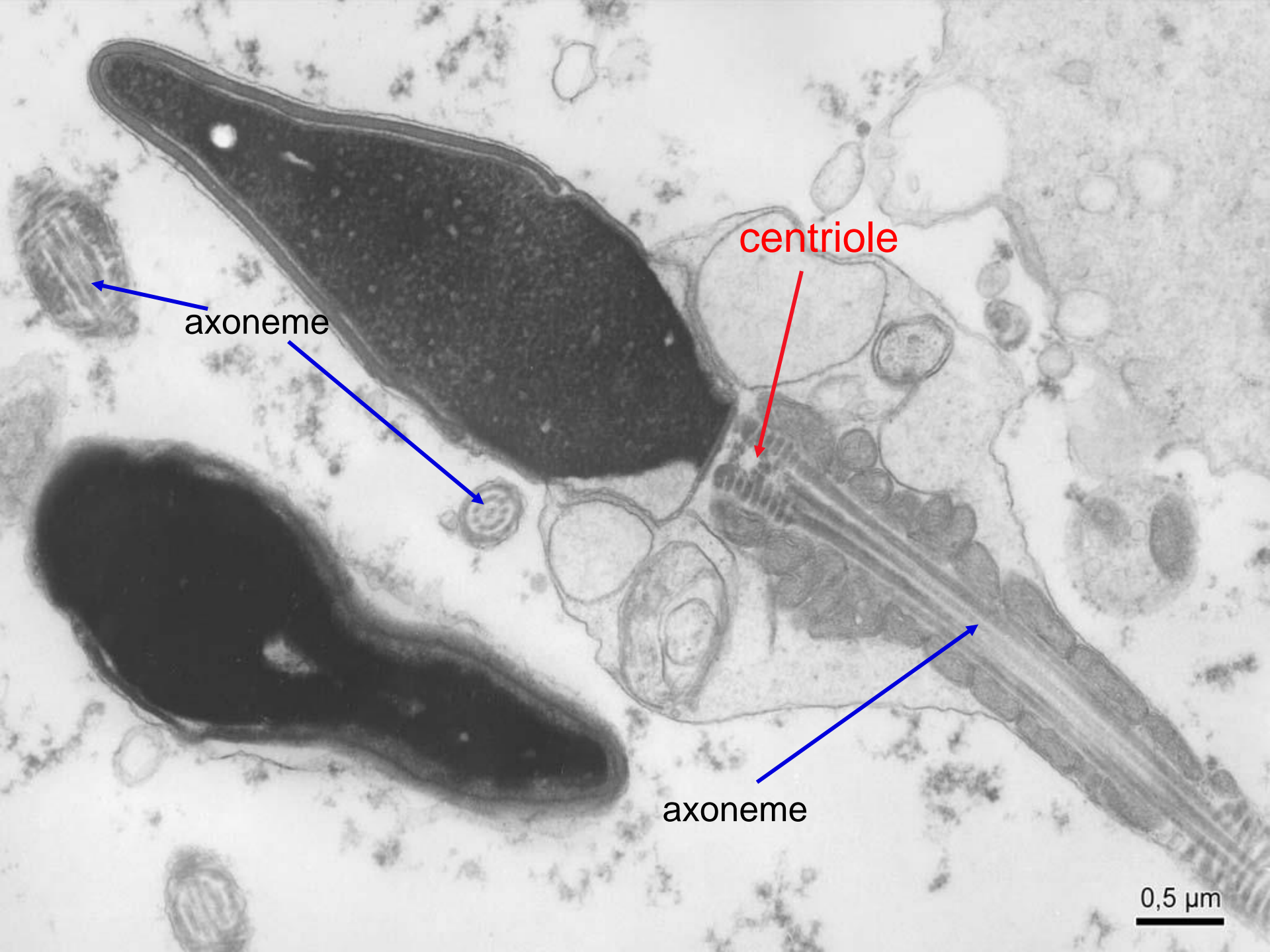


0.5 μm



axoneme

MUNI
MED

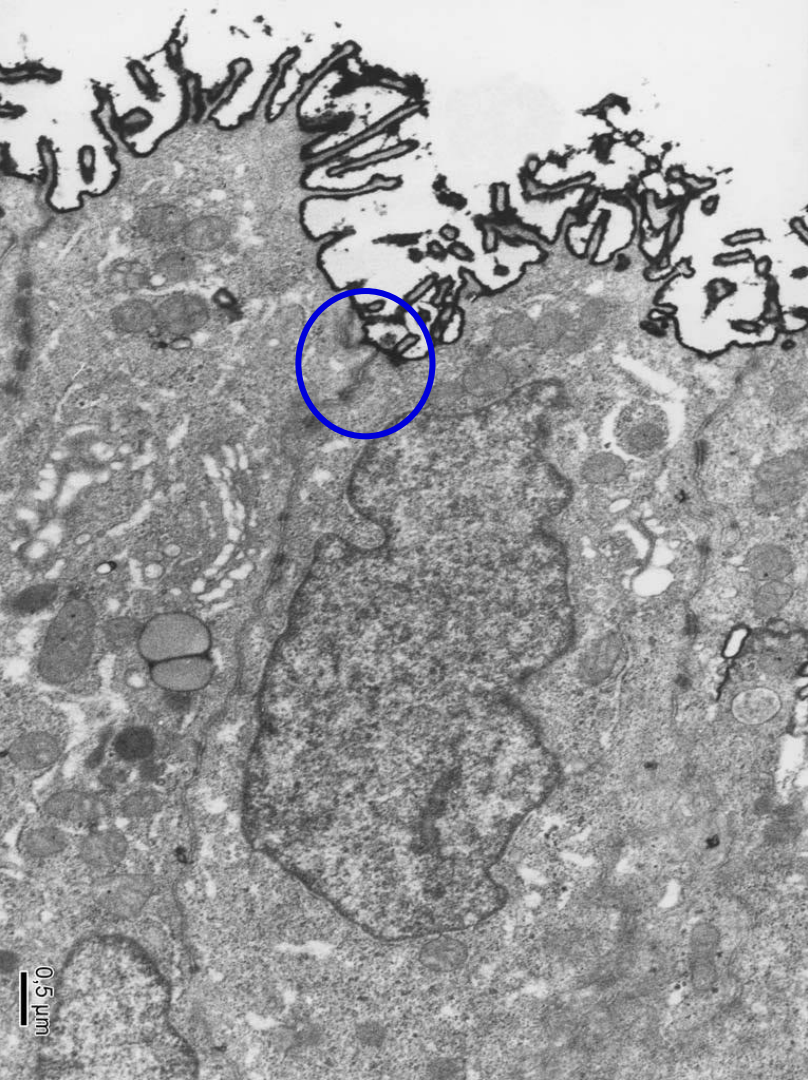


axoneme

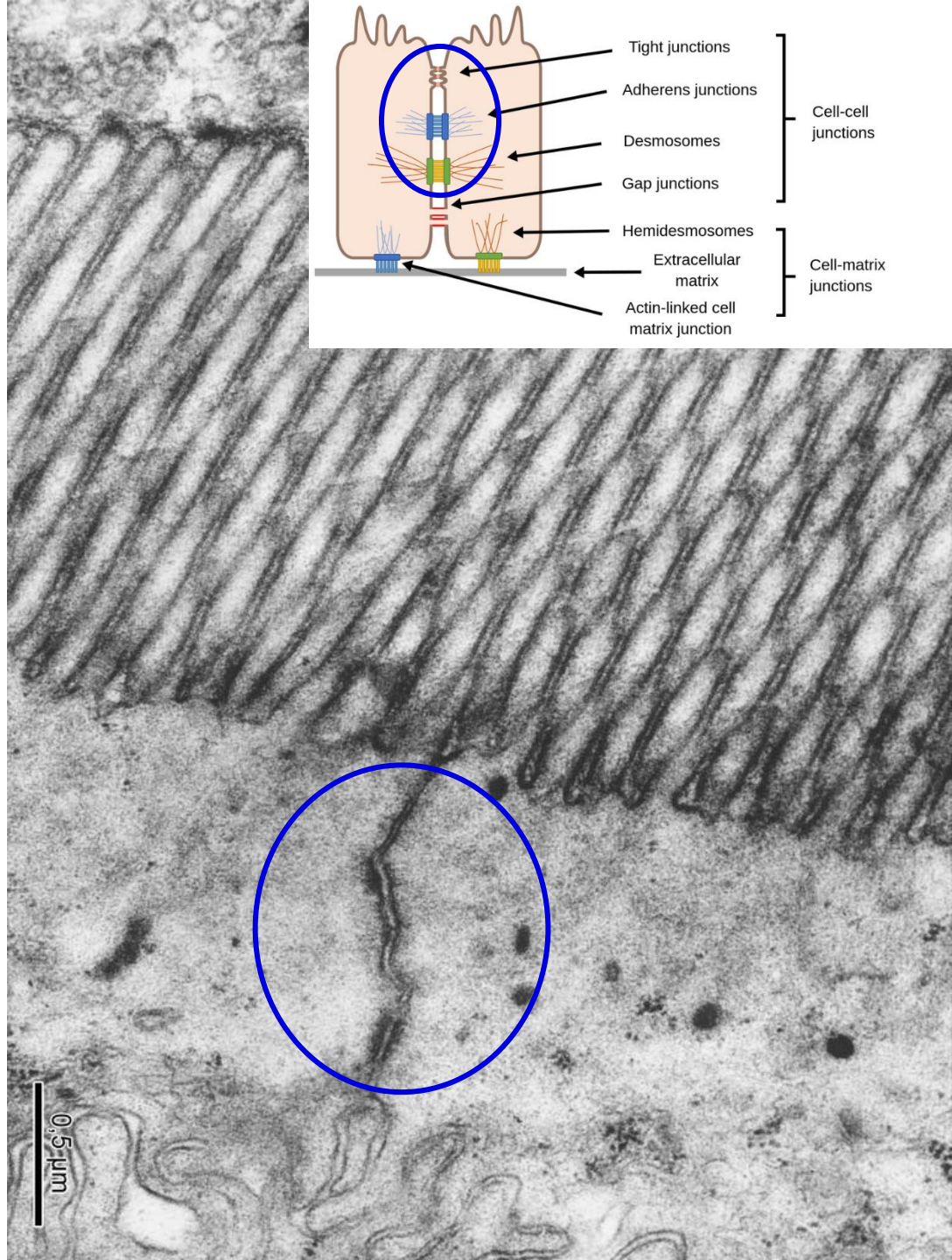
centriole

axoneme

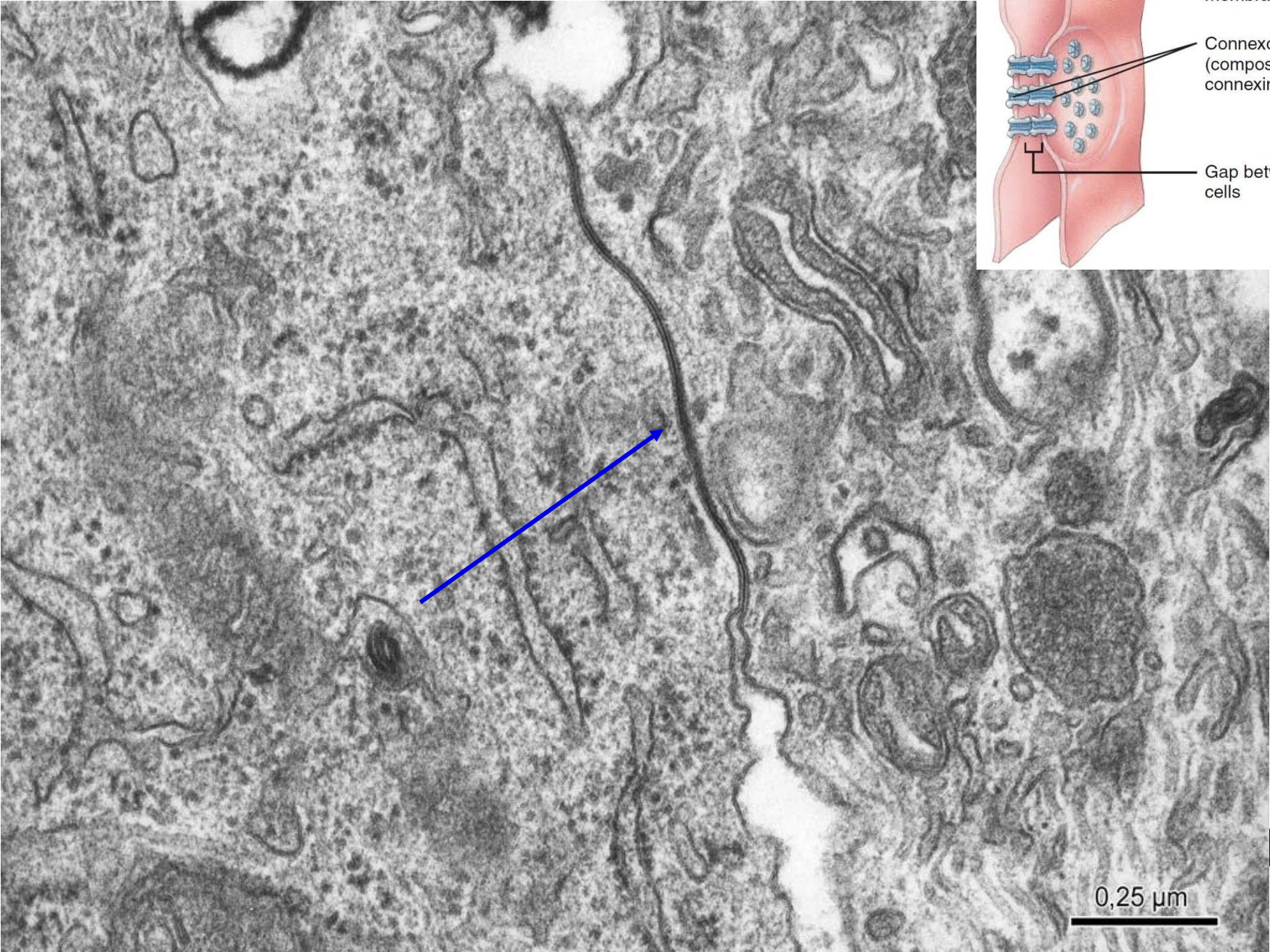
0,5 μm



terminal bar

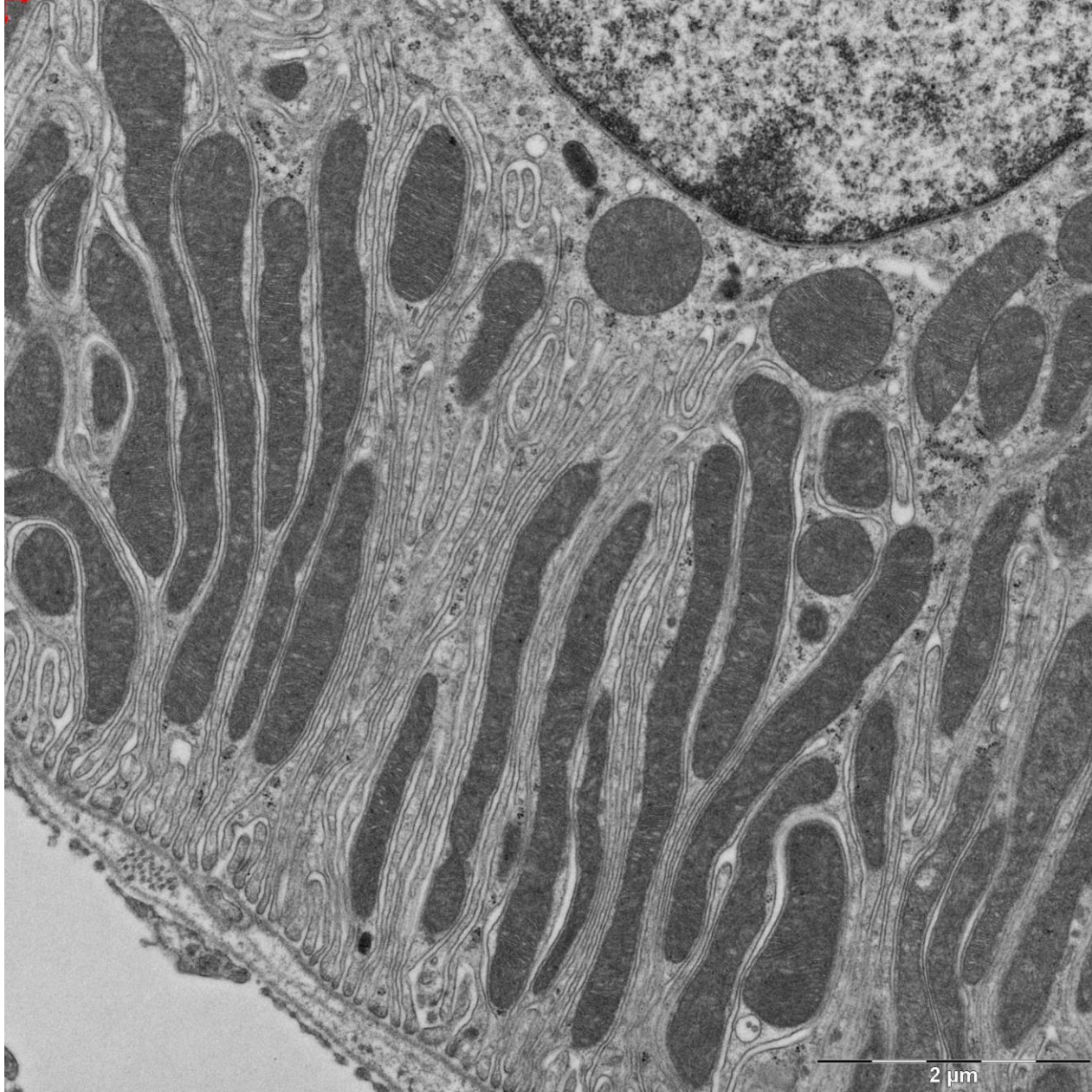


nexus



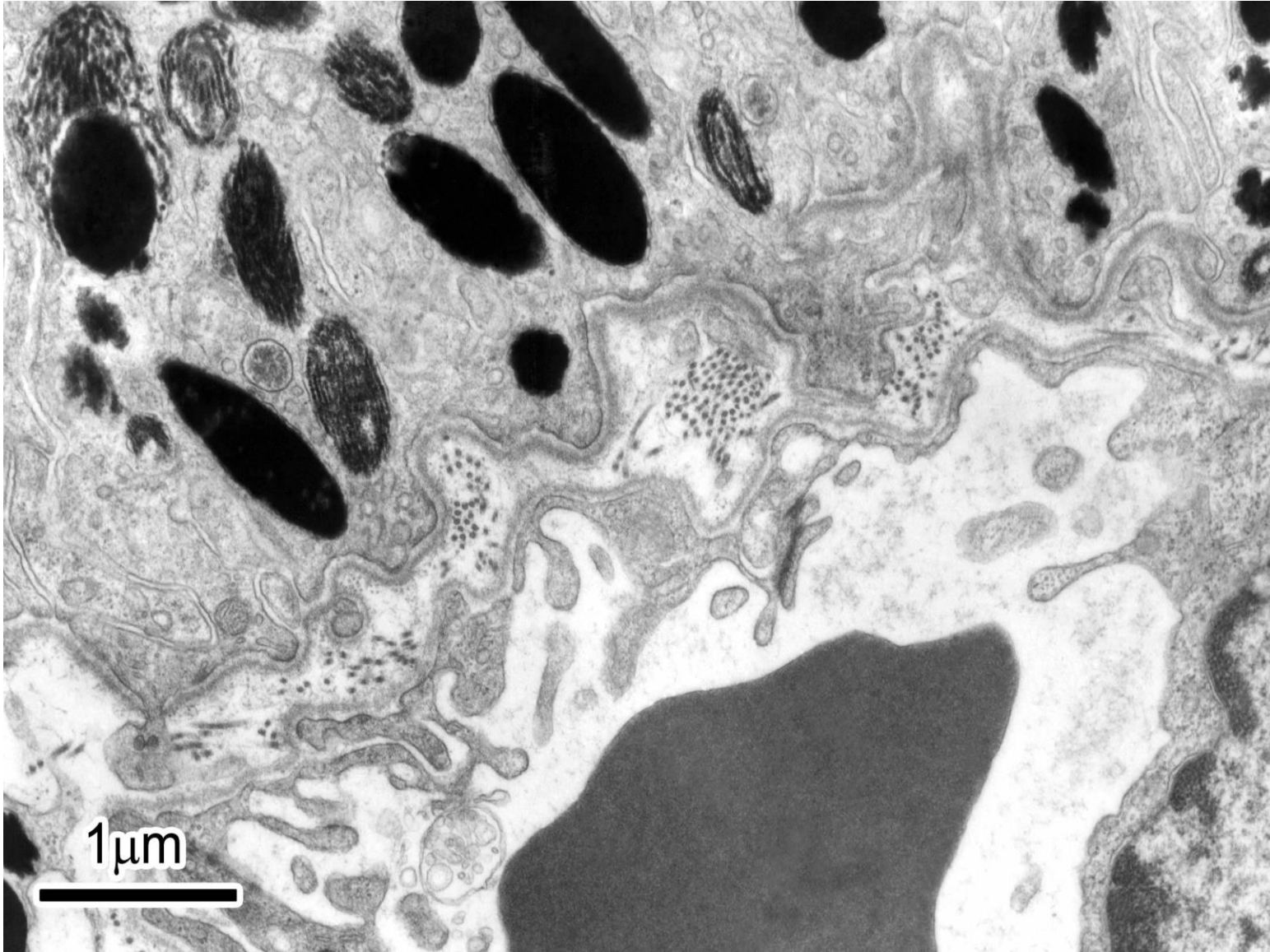
basal labyrinth

– invaginations of membrane + mitochondria



basement membrane

- *lamina basalis – lamina lucida + lamina densa*
- *lamina fibroreticularis*



CYTOLOGY II

- cell inclusions
 - glycogen (α - and β - granules)
 - lipid droplets
- cytoskeleton
 - actin filaments
 - intermediate filaments
 - microtubules
- cell surfaces
- microvilli
- kinocilia
- terminal bar
- desmosome
- nexus
- basal labyrinth
- basement membrane

Atlas: pages 12-27

Web: https://is.muni.cz/do/rect/el/estud/lf/js18/histologie_atlas/web/atlas_OH_en.html?chapter=0

MUNI MED Department of Histology and Embryology

Protocol No.:

Protocol title:
UCO/Name:
Study program/year: Study group: Date:

List of slides (Box):

Number	Title of slide and used staining
.....
.....
.....
.....
.....
.....
.....
.....
.....
.....

List of electronograms (Atlas)

Number	Title of <u>electronogram</u>
.....
.....
.....
.....
.....
.....
.....
.....
.....
.....

Guidelines for protocol preparation

1. Protocol shall complement theoretical knowledge with real microscopic observations. As such it contains color diagrams of histological slides, or black and white diagrams of electronograms of EM atlas, and if applicable, also answers to theoretical questions.