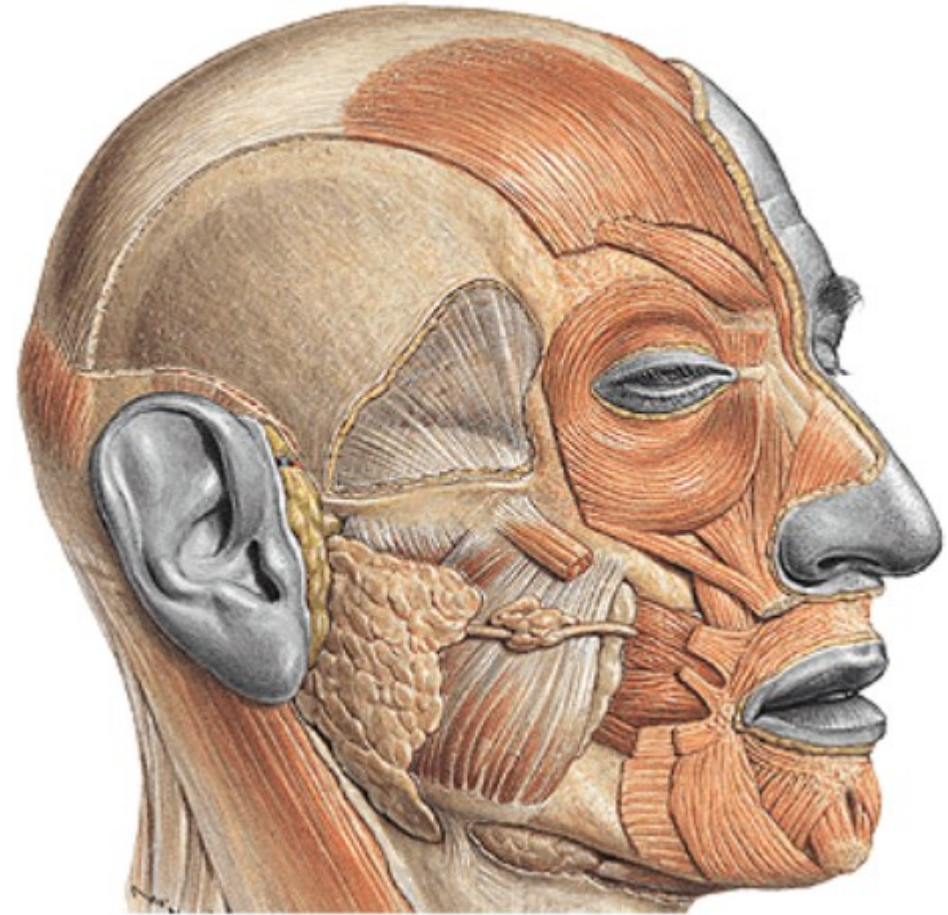


Fossa temporalis, fossa
infratemporalis, fossa
pterygopalatina

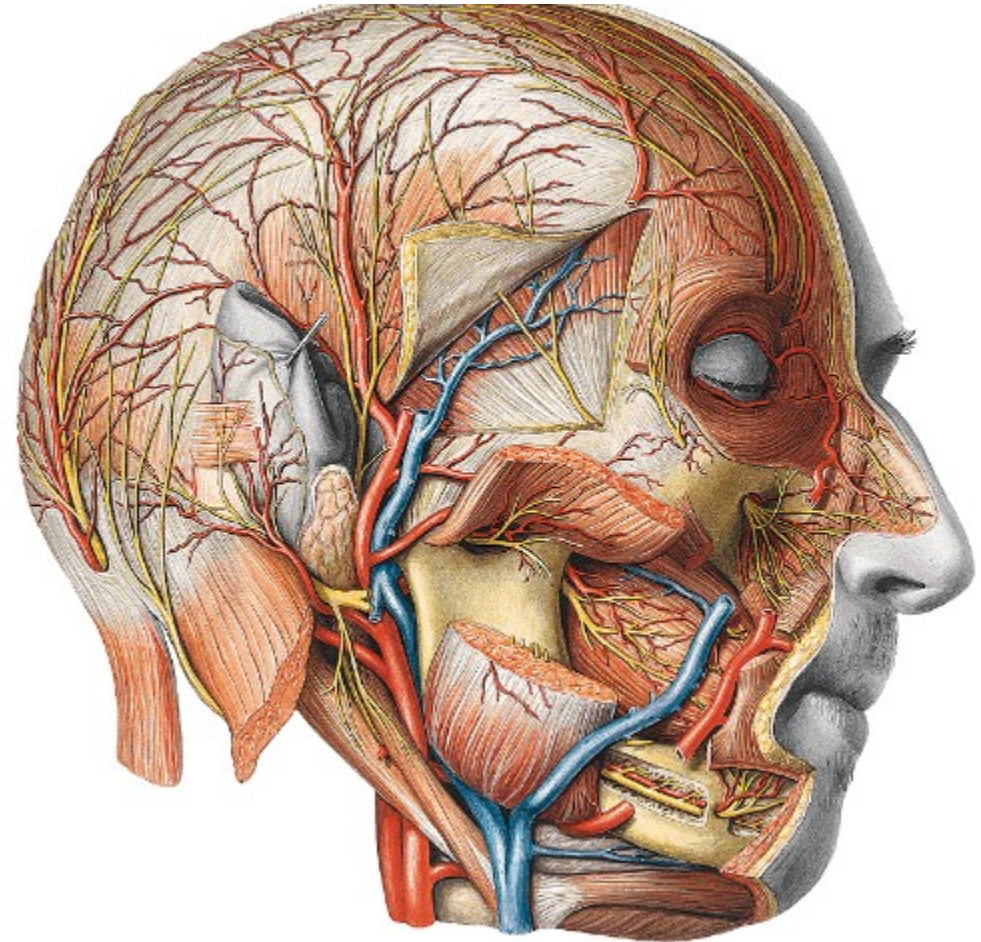
Fossa temporalis

- Borders:
linea temporalis sup.,
arcus zygomaticus



Fossa temporalis - cont

- skin
- M. temporalis
- m. temporoparietalis (n.VII.)
- n. auricularis magnus
- a., v. temporalis spf. (v. retromandibularis)
- n. auriculotemporalis
- fascia temporalis (two laminae)
- a.,v., n. temporalis prof.



Fossa infratemporalis



Borders:

Upper: crista infratemporalis alae majoris osis sphenoidalis

Ventral: facies infratemporalis corporis maxillae

Lateral: ramus mandibulae

Medial: lamina lat. proc. Pterygoidei

Dorsal: missing, styloid septum

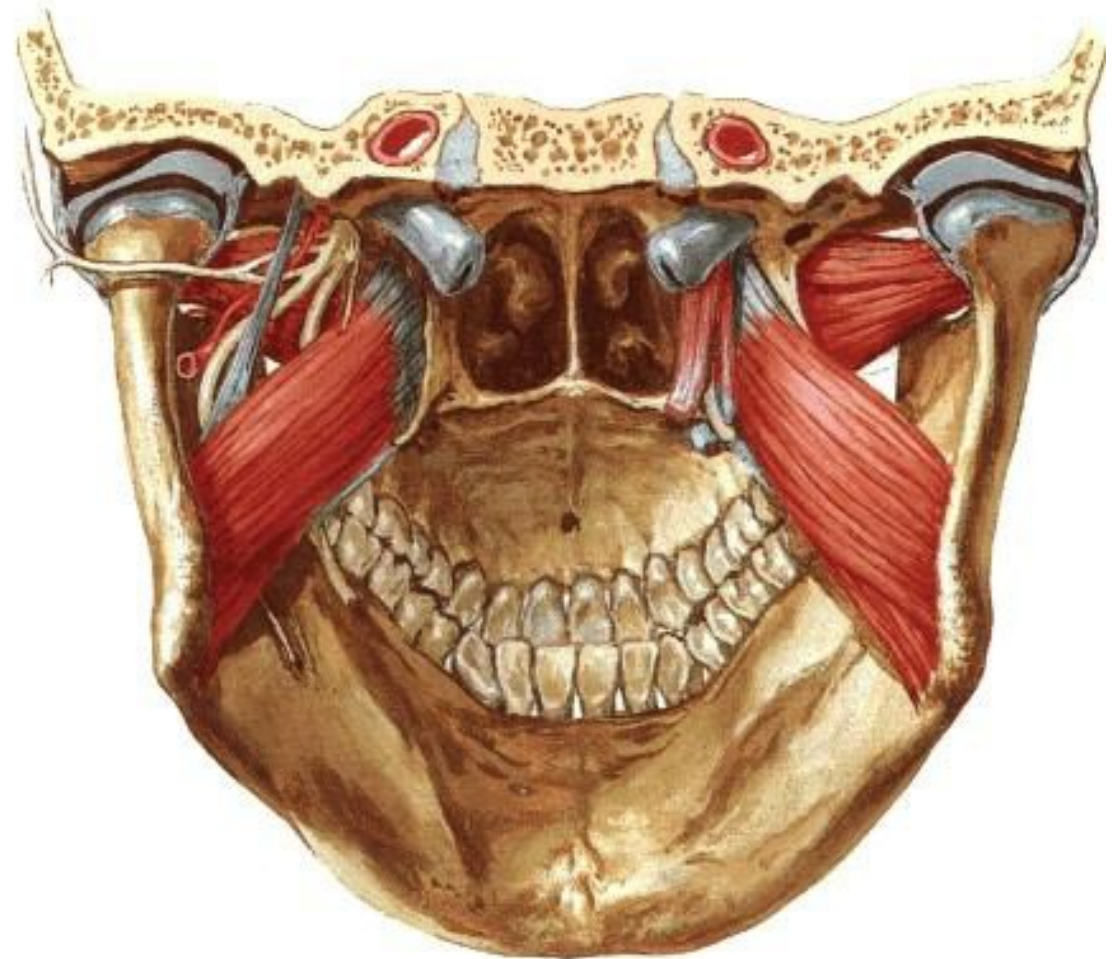
Fossa infratemporalis - content

Mm. pterygoidei

A. maxillaris

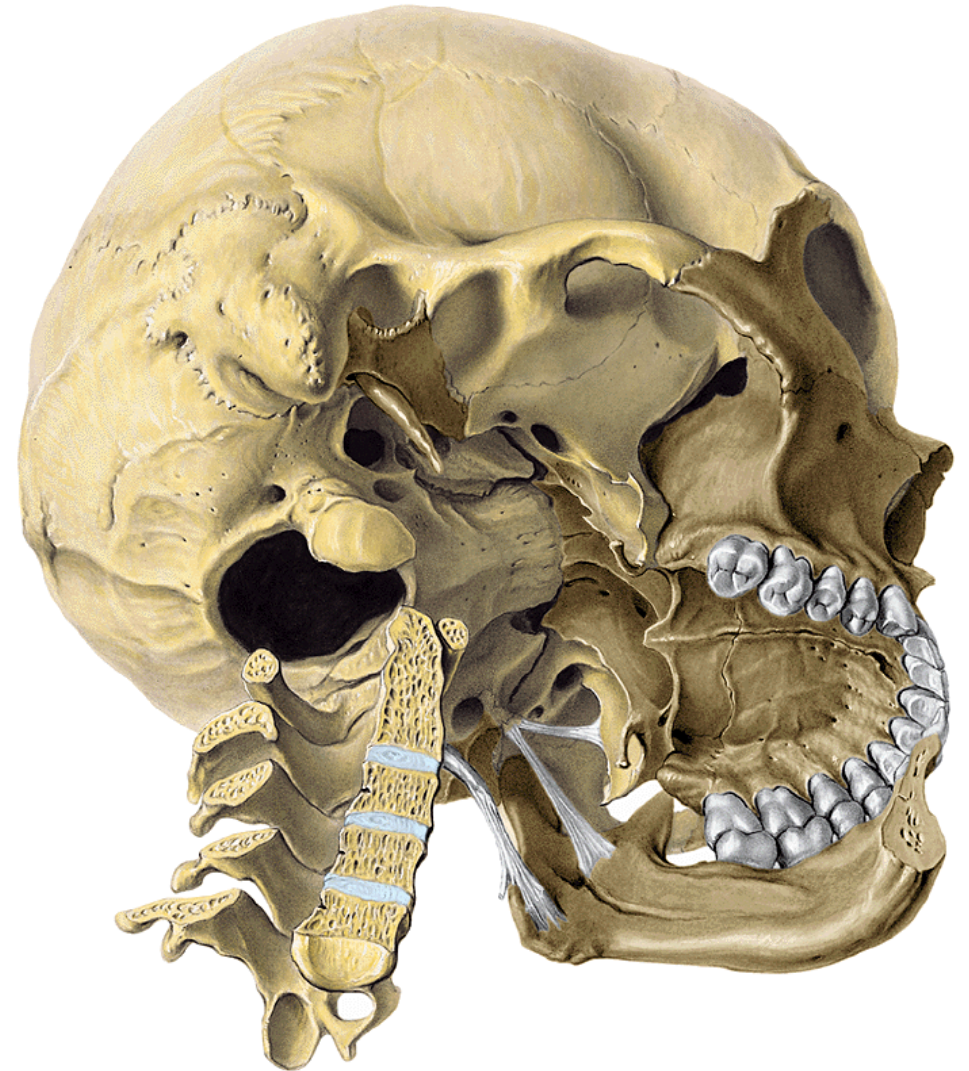
N. mandibularis

Plexus pterygoideus



Fossa infratemporalis

- v.ophthalmica inf. (fissura orbitalis inf.)
- n.mandibularis (foramen ovale)
- a.meningea media (foramen spinosum)
- n.alveolaris inf. (canalis mandibulae)
- n.mylohyoideus (sulcus mylohyoideus)



A.maxillaris in fossa infratemporalis

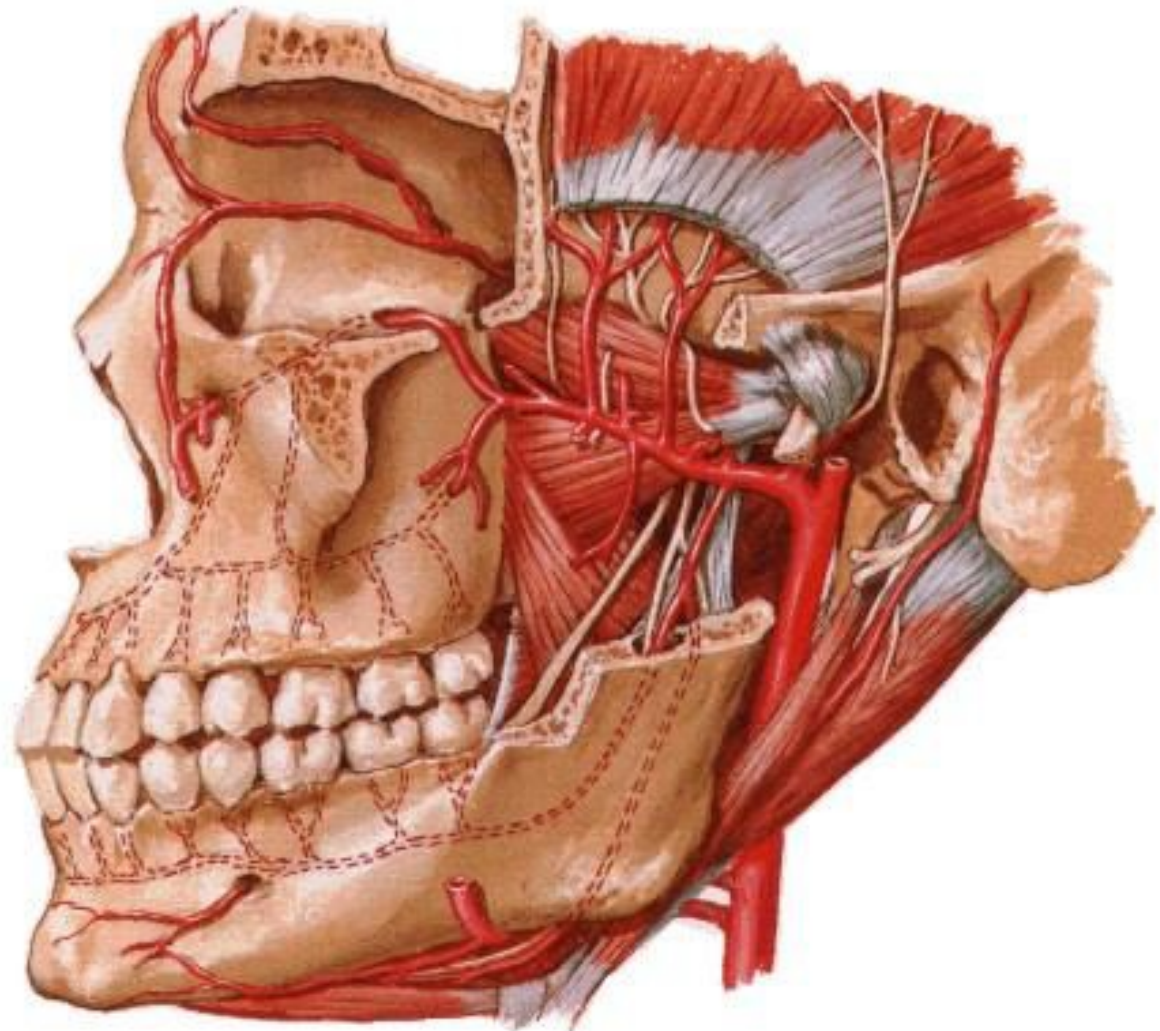
Pars pterygoidea

arteria masseterica

arteriae temporales prof.

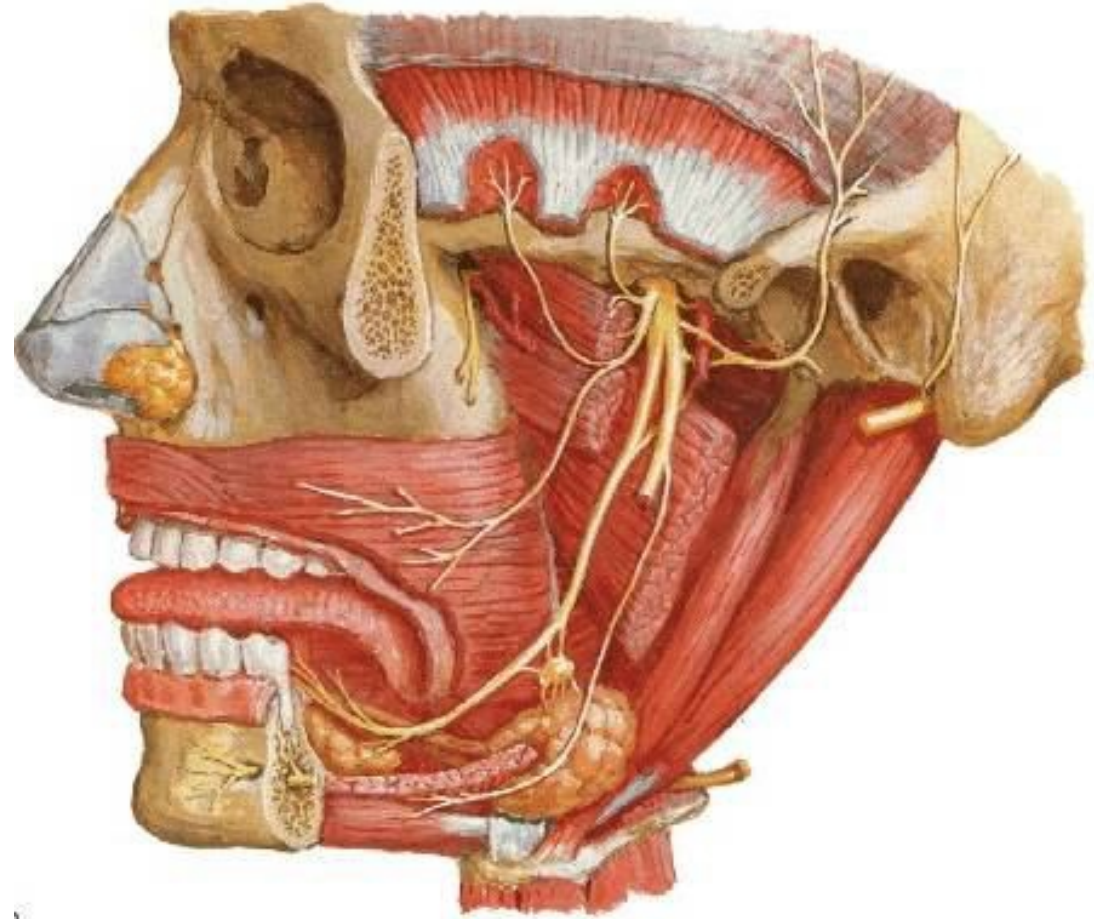
rr. pterygoidei

arteria buccalis



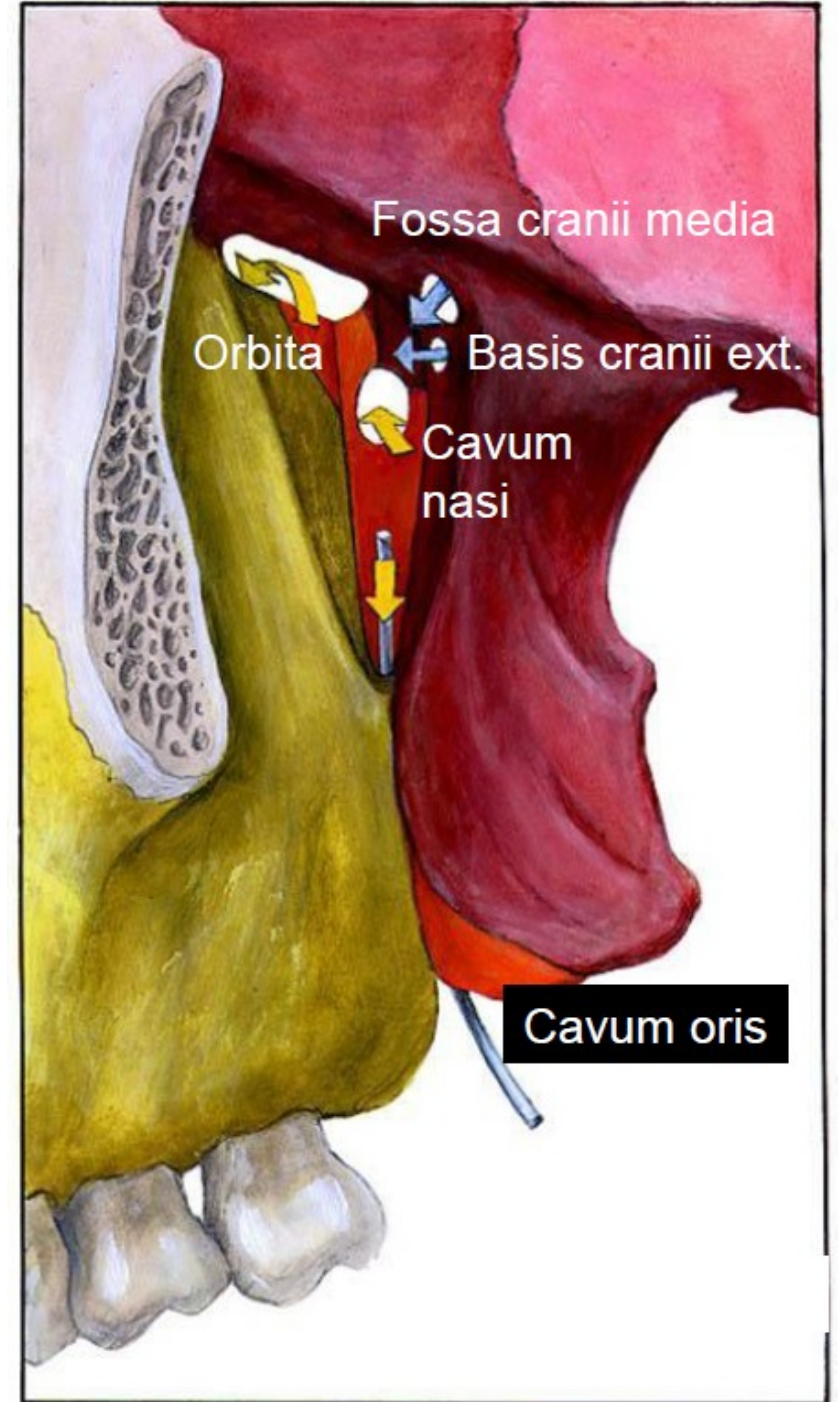
Branches of the mandibular nerve in the infratemporal fossa

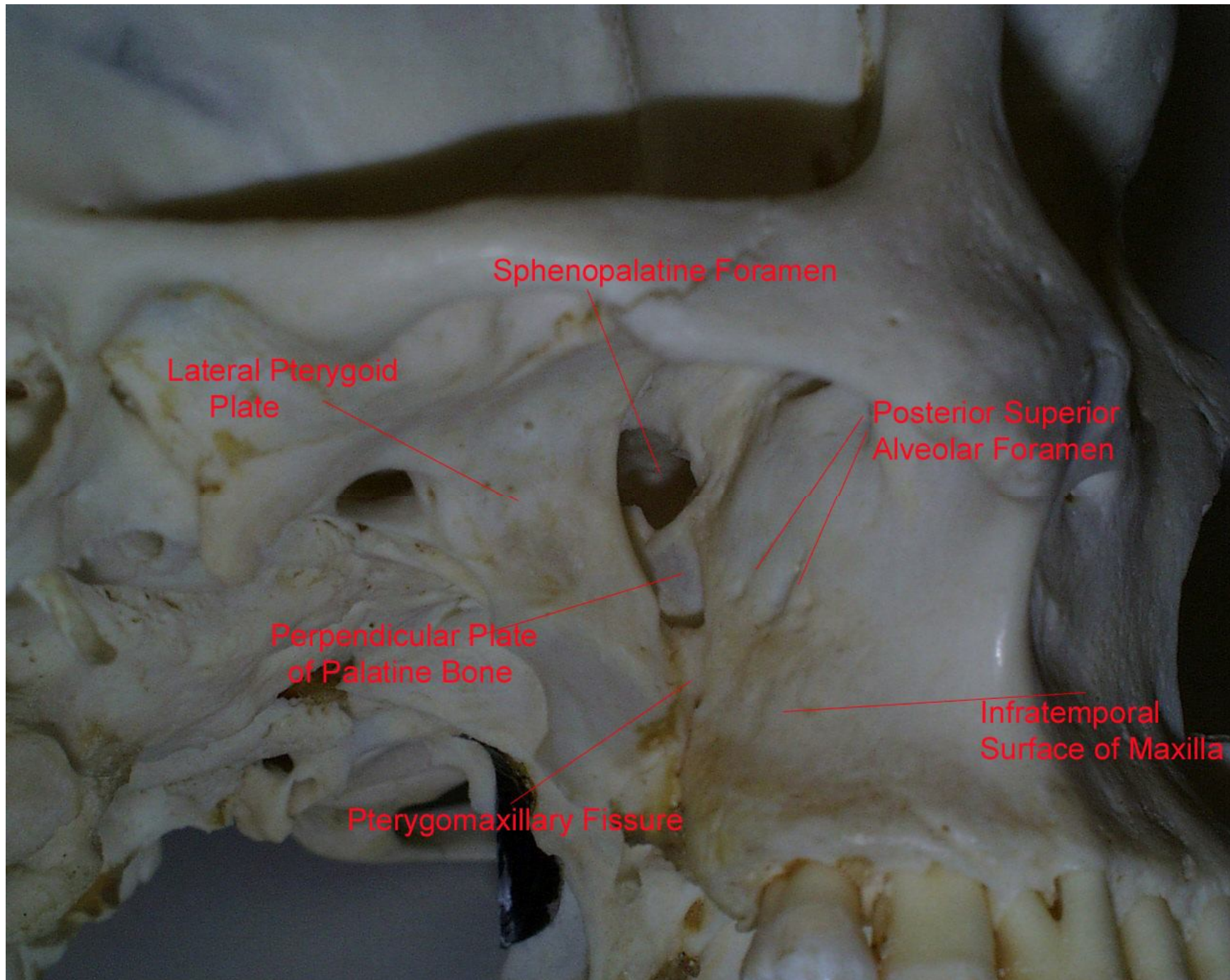
- **N. mandibularis**
- **N. buccalis**
- **N. lingualis**
- **N. alveolaris inf.**
- **n. mentalis**
- **R. mylohyoideus**
- **N. auriculotemporalis**



Fossa pterygopalatina

- Upper wall
 - Facies maxillaris alae majoris ossis sphenoidalis
 - **Foramen rotundum** (fossa cranii media)
 - **Fissura orbitalis inferior** (orbita)
- Medial wall
 - lamina perpendicularis ossis palatini
 - **Foramen sphenopalatinum** (cavum nasi osseum)
- Ventral wall
 - tuber maxillae (**foramina alveolaria**)
- Dorsal wall
 - Processus pterygoideus ossis sphenoidalis
 - **canalis pterygoideus** (basis cranii externa)
- Caudally:
 - **Canalis palatinus major** (cavum oris)





Sphenopalatine Foramen

Lateral Pterygoid Plate

Posterior Superior Alveolar Foramen

Perpendicular Plate of Palatine Bone

Infratemporal Surface of Maxilla

Pterygomaxillary Fissure

Branches of a. maxillaris – pars pterygopalatina

Pars pterygopalatina

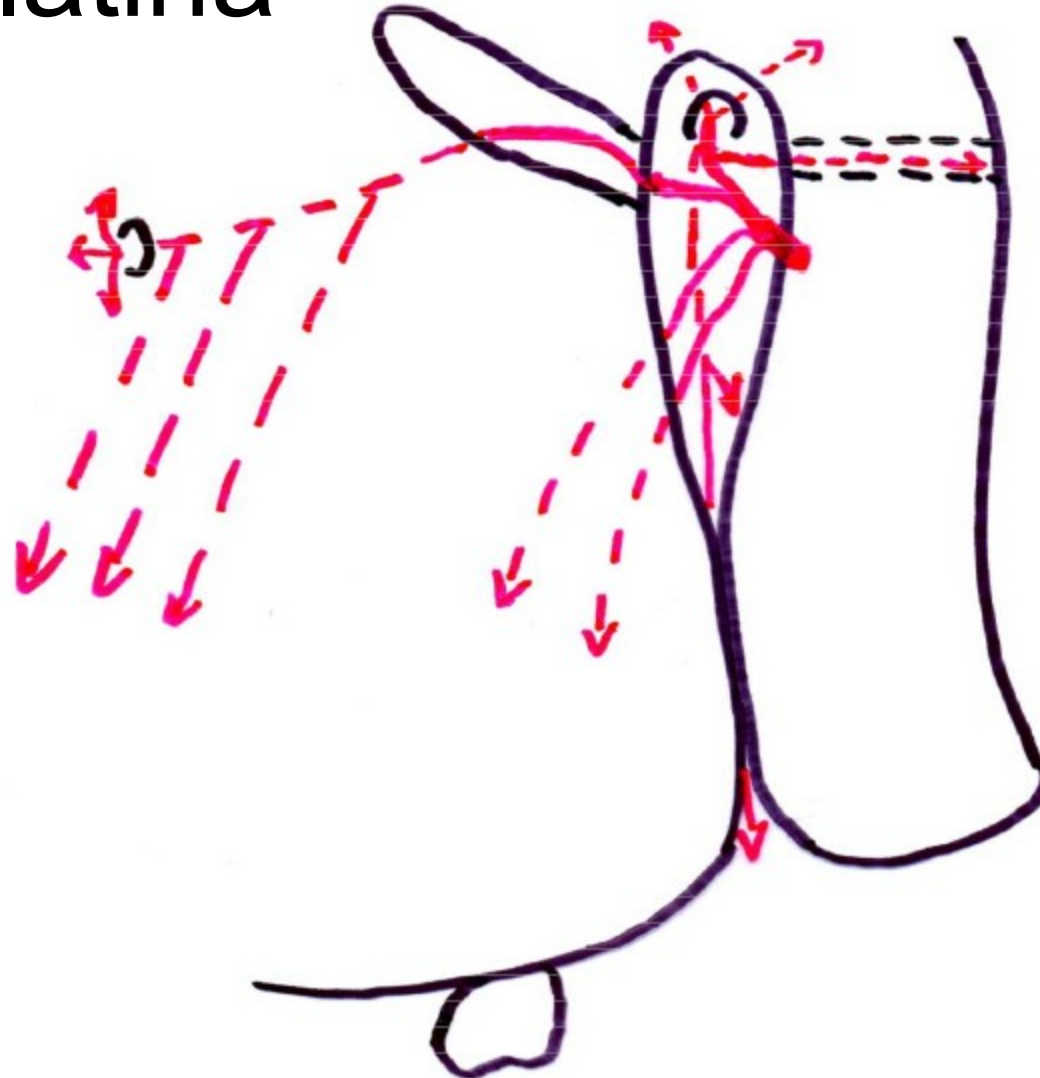
a. infraorbitalis

a. alveolaris sup. post.

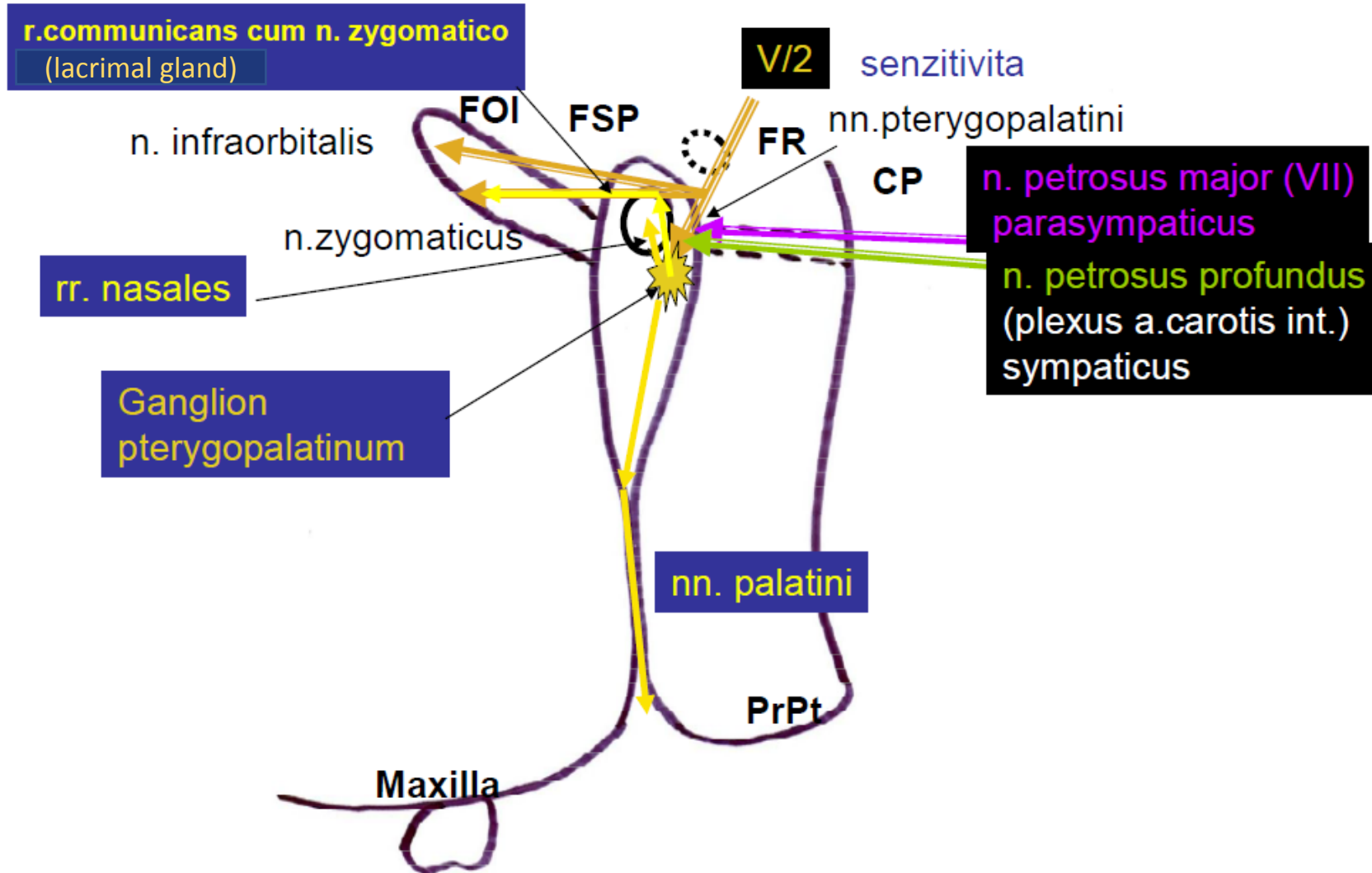
a. palatina descendens

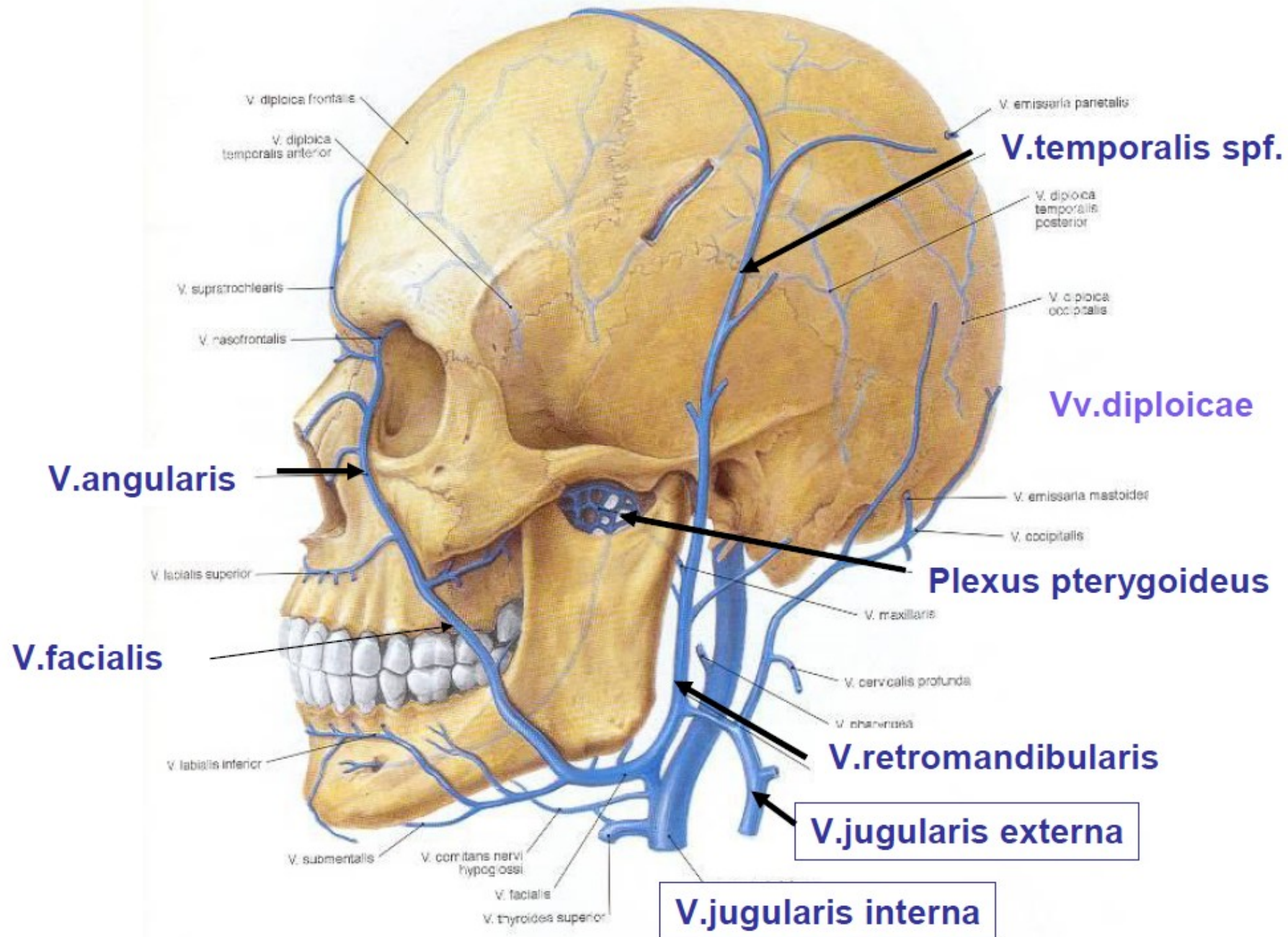
a. canalis pterygoidei

a. sphenopalatina



Side view of fossa pterygopalatina (passages of nerves)





- **References:**

- Čihák, R.: Anatomie 1,2,3, Praha, Grada, 2001
- Netter, F.: Atlas of Human Anatomy, 4th ed., Elsevier, USA, 2006
- Naňka, Elišková: Přehled anatomie. Galén, Praha 2009
- Seidl et al.: Radiologie pro studium i praxi, Grada publishing, 2013
- Mrázková, Doskočil: Klinická anatomie pro stomatologii, Albertus, Praha, 1994
- Brand, Isselhard: Anatomy of orofacial structures, 8th edition, Elsevier, USA, 2019
- Fehrenbach, Herring: Illustrated anatomy of the head and neck, 5th edition, Elsevier, USA, 2017
- Moore, Dalley: Clinically oriented anatomy, 5th edition, USA, 2006