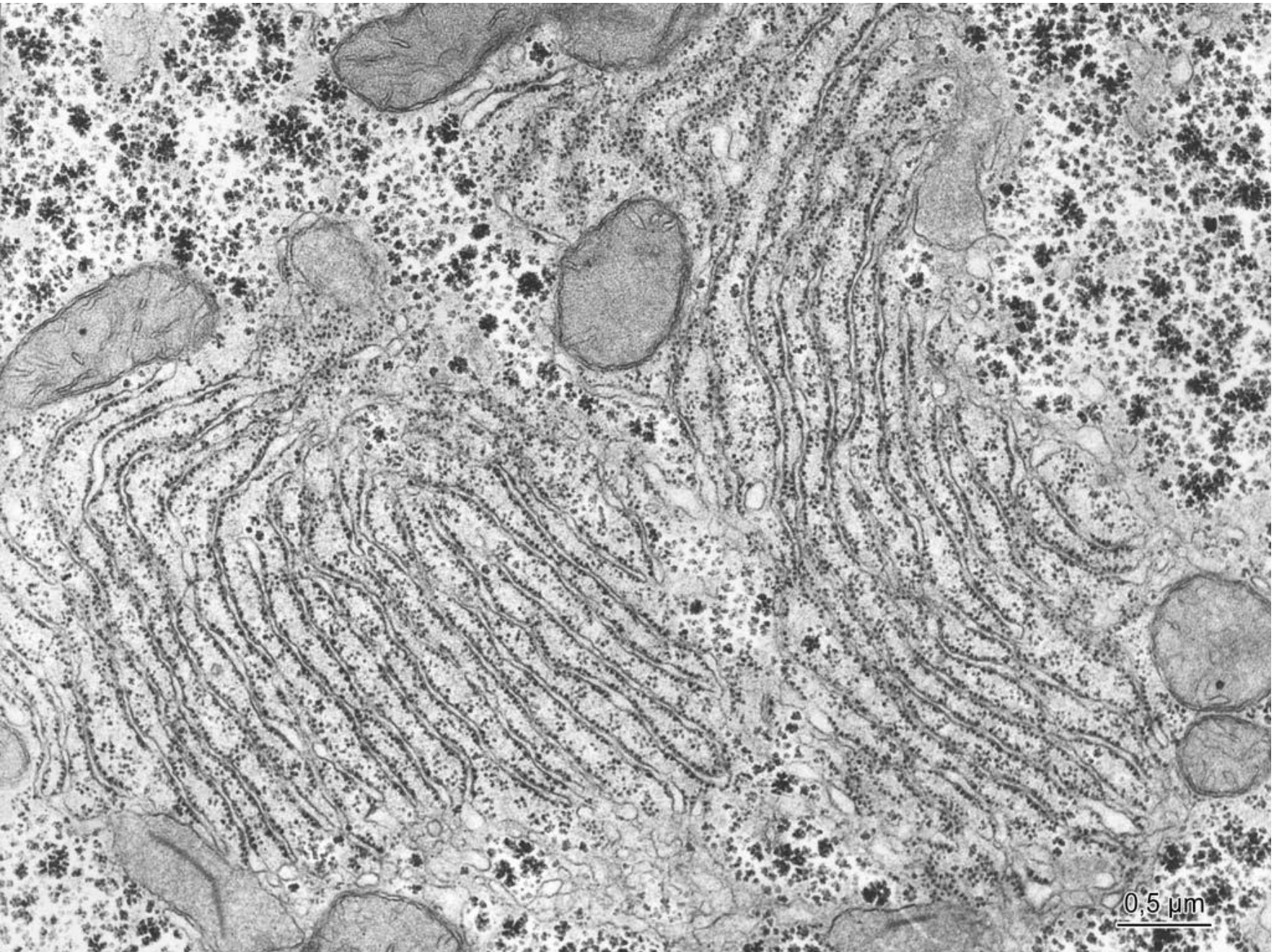


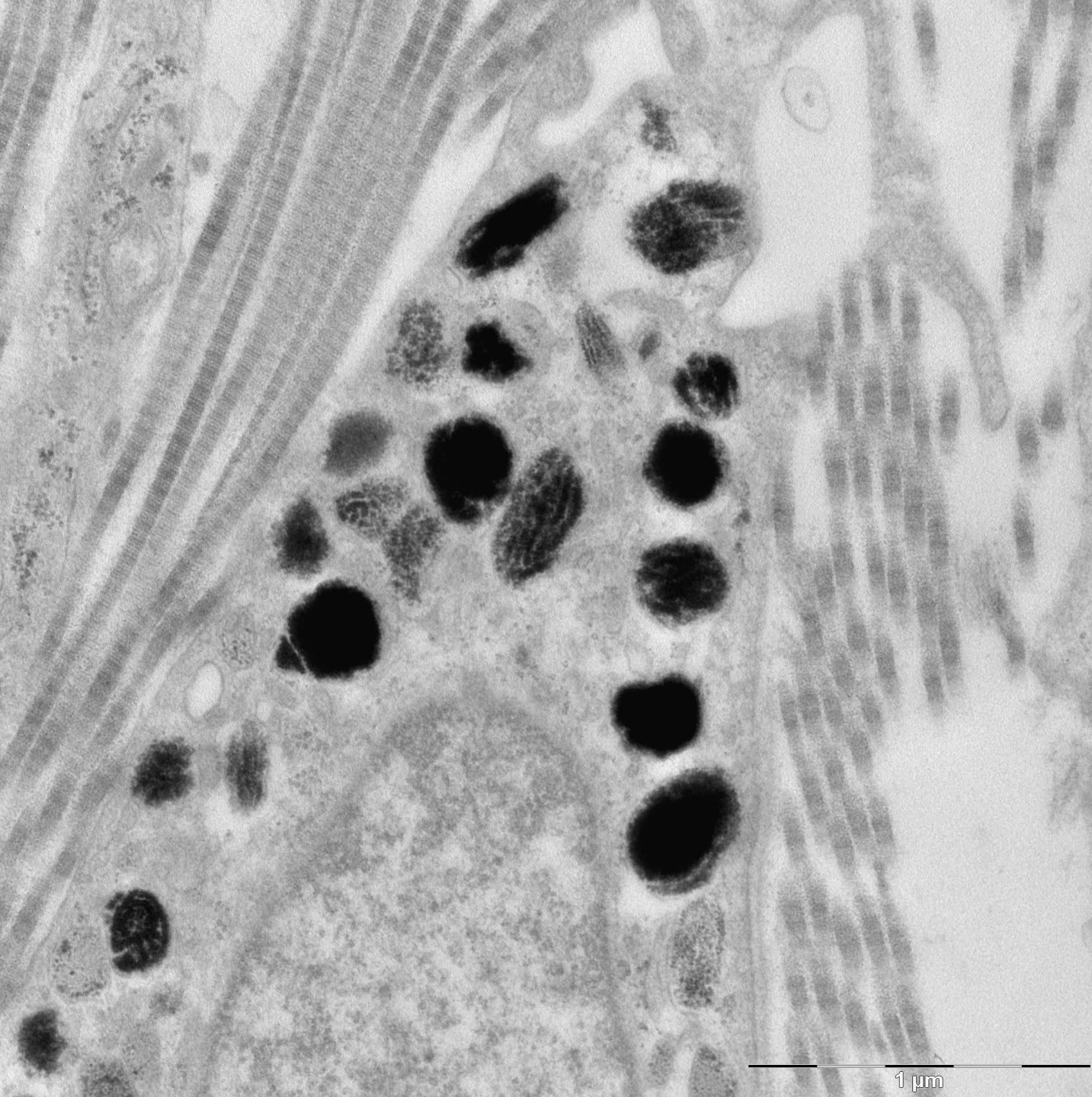
# CYTOLOGIE II

Buněčné inkluze. Cytoskelet. Modifikace buněčných povrchů. Mezibuněčné spoje.

CYTOLOGICKÝ A EMBRYOLOGICKÝ ATLAS

# glykogen – $\alpha$ granula

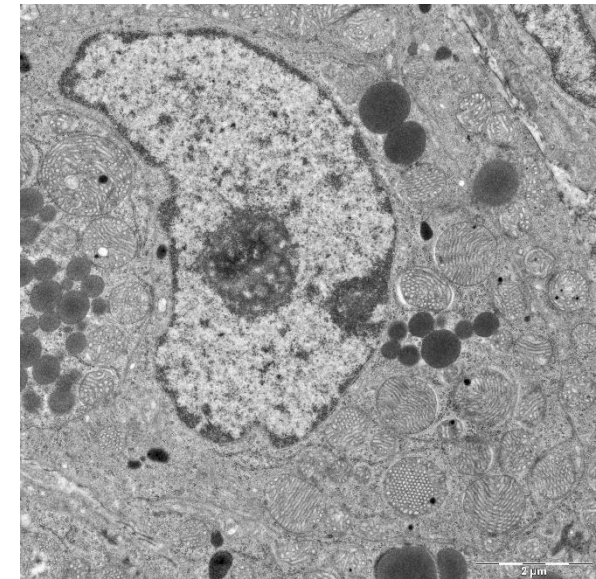
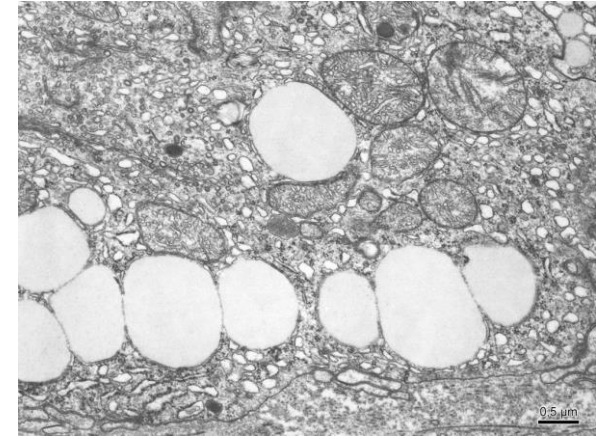




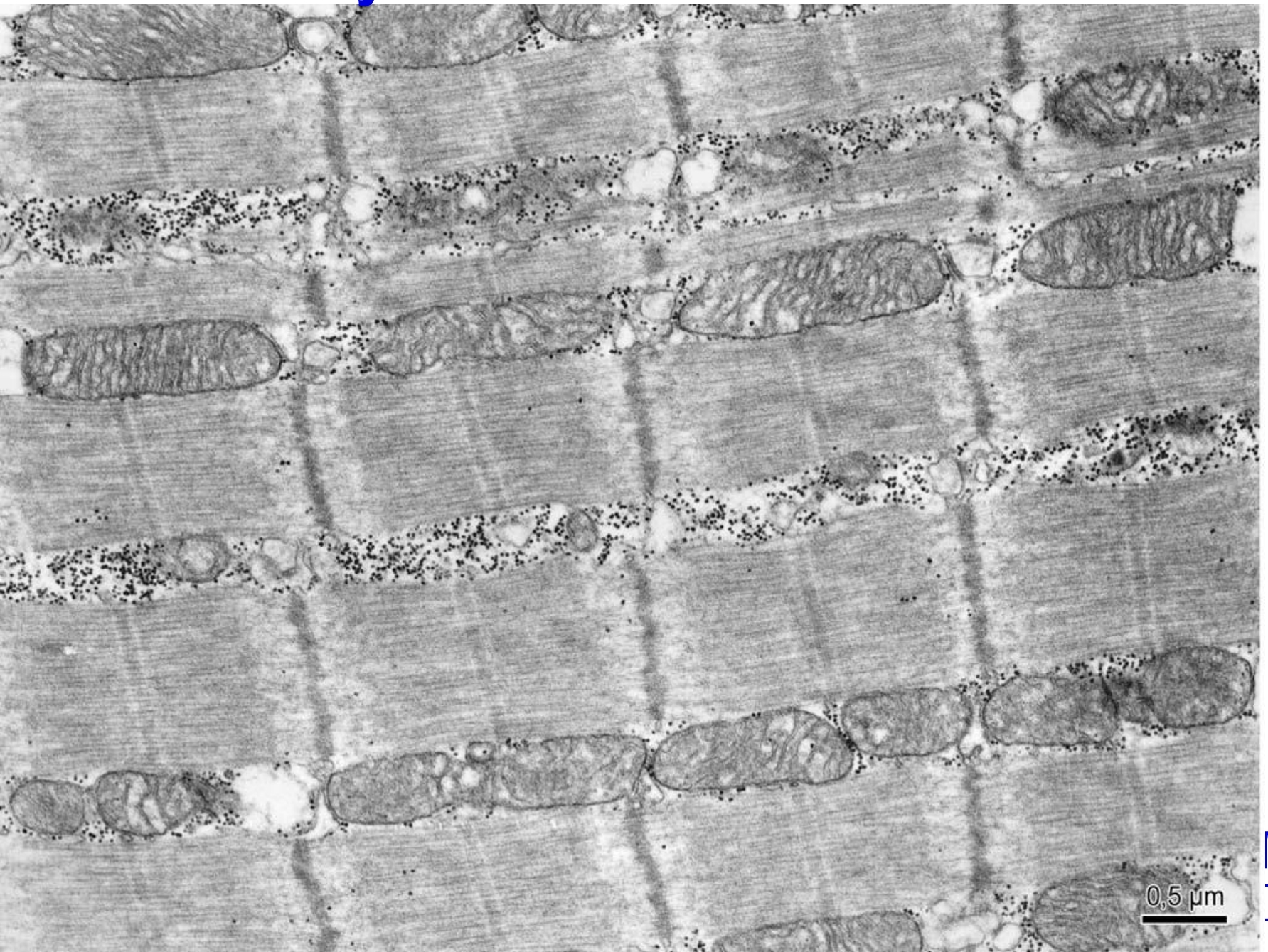
1 μm

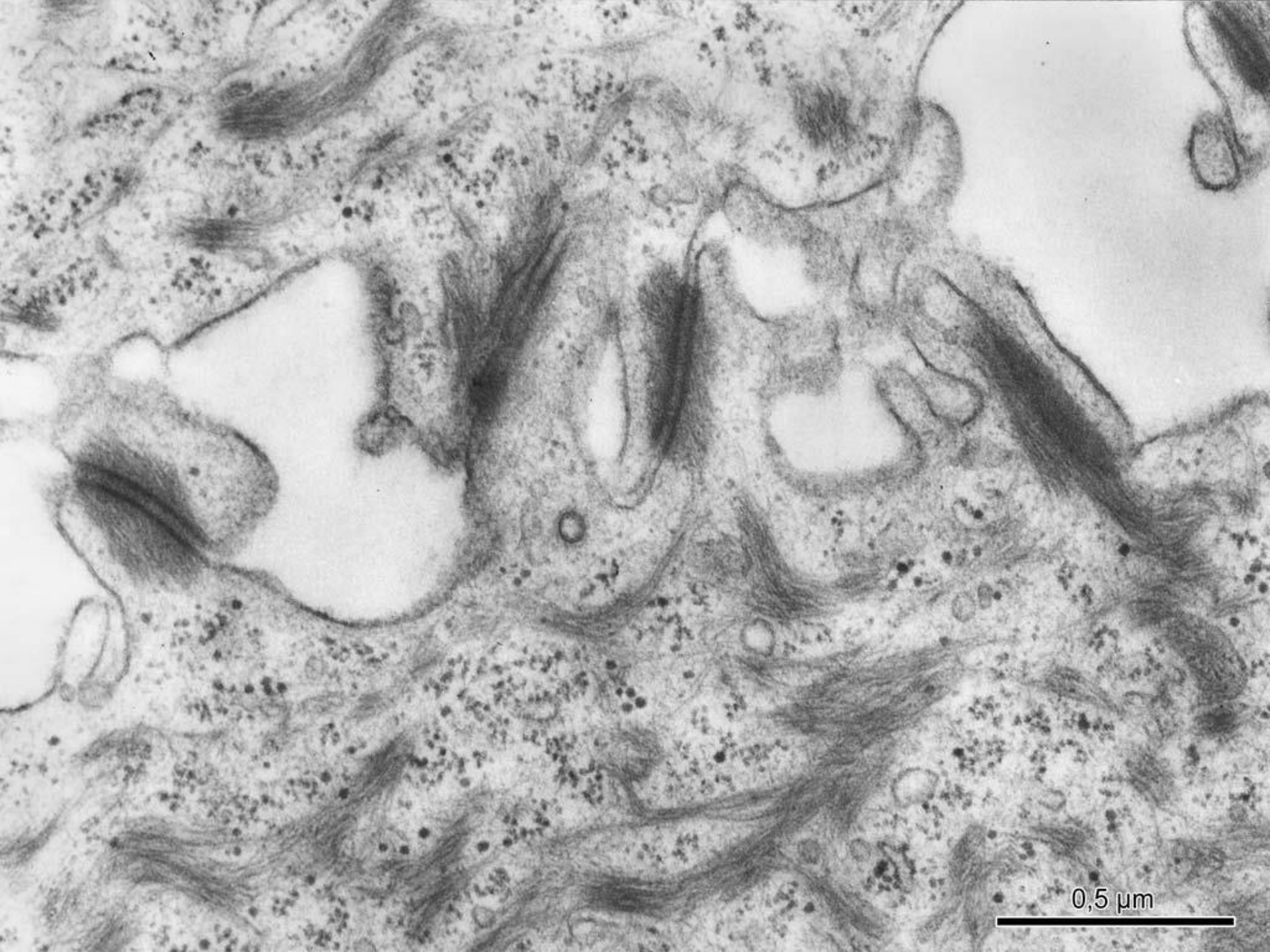
**MUNI  
MED**

# lipidové kapky



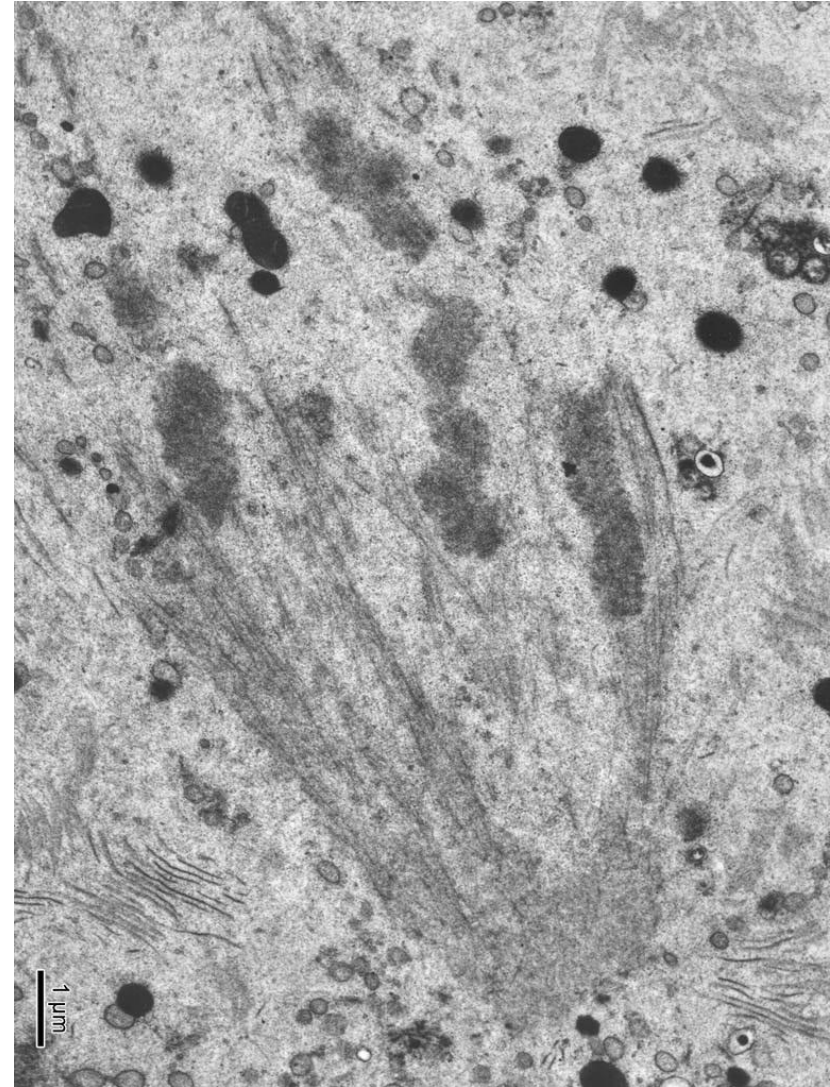
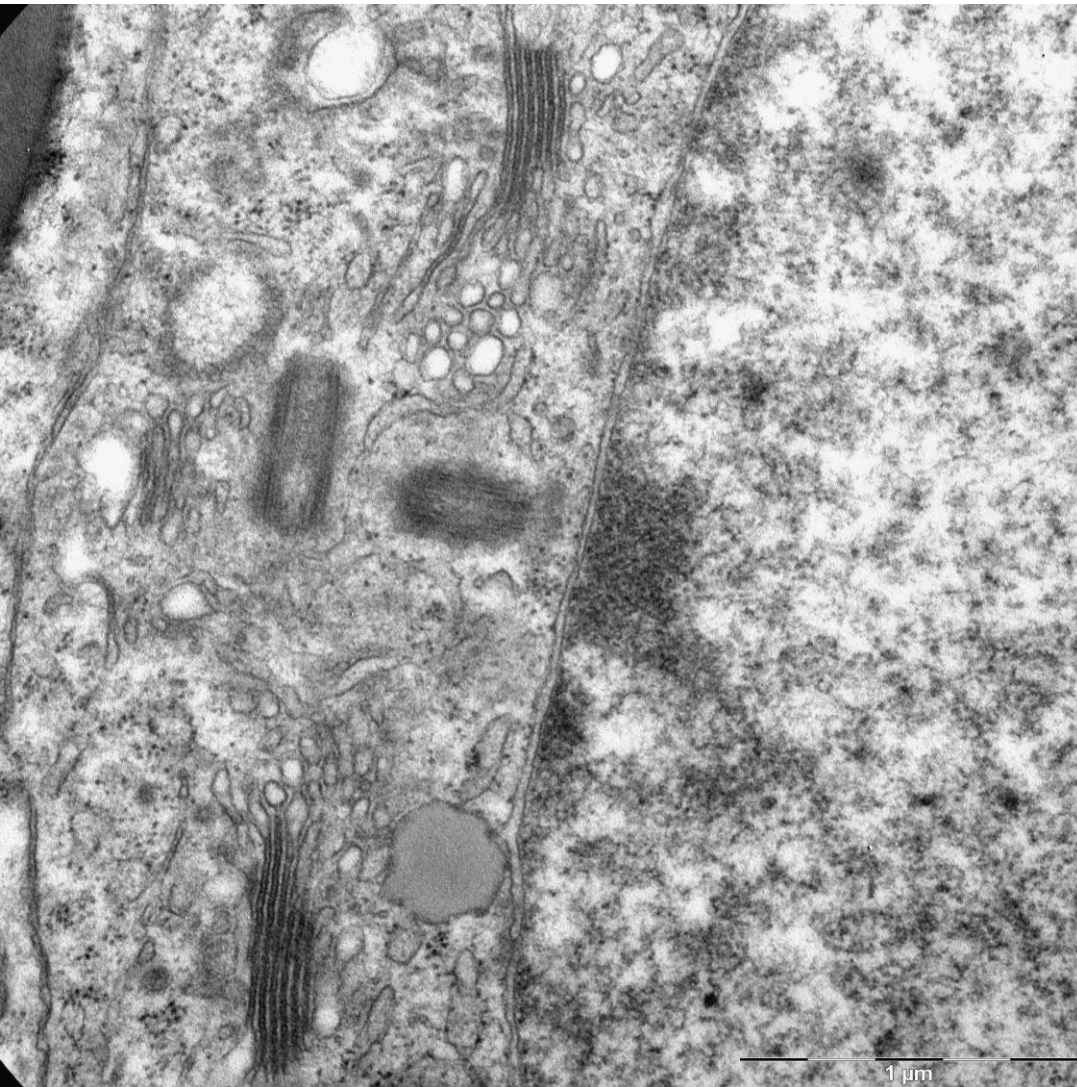
# aktinová a myosinová filamenta



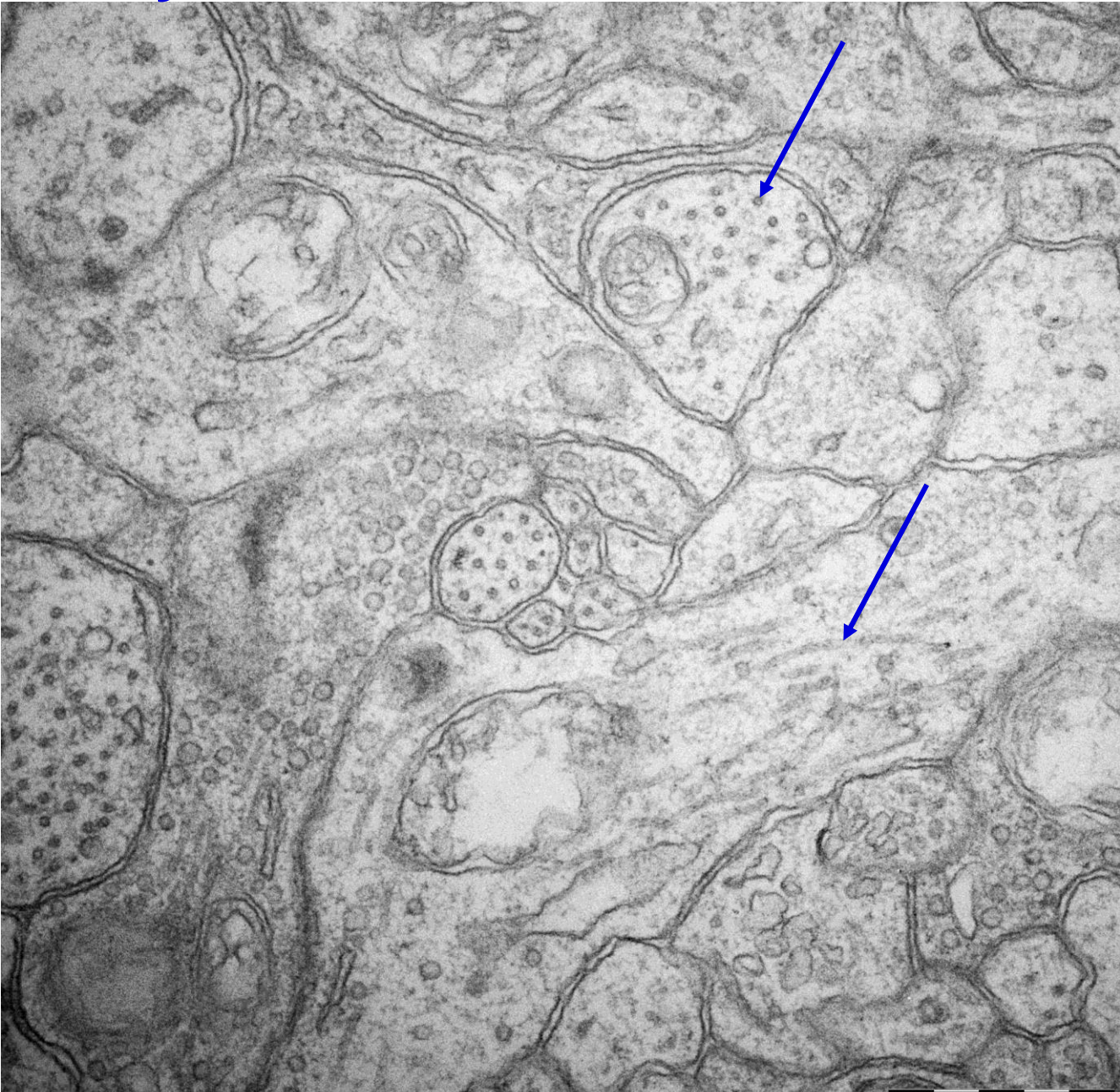


0,5  $\mu\text{m}$

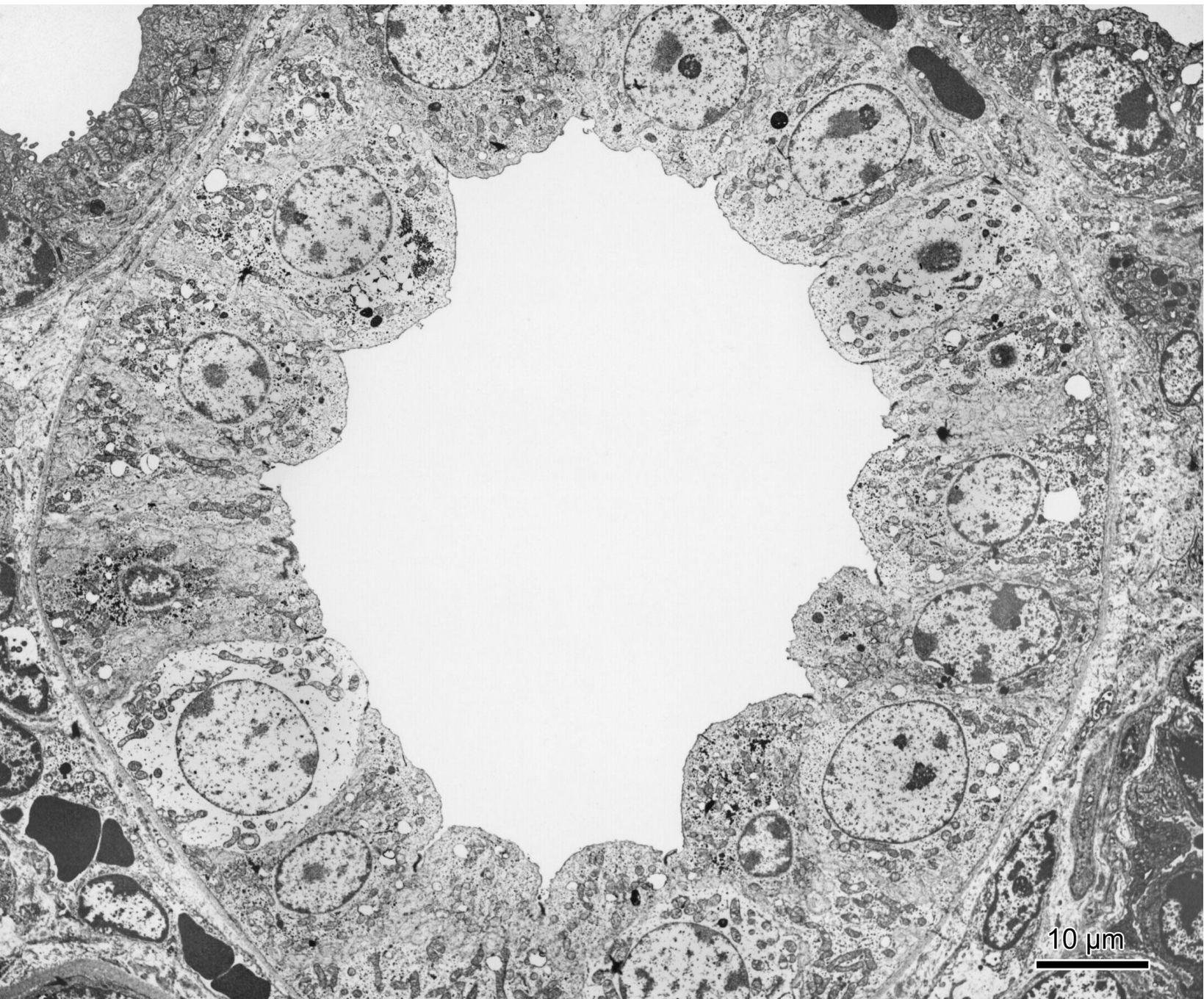
# mikrotubuly

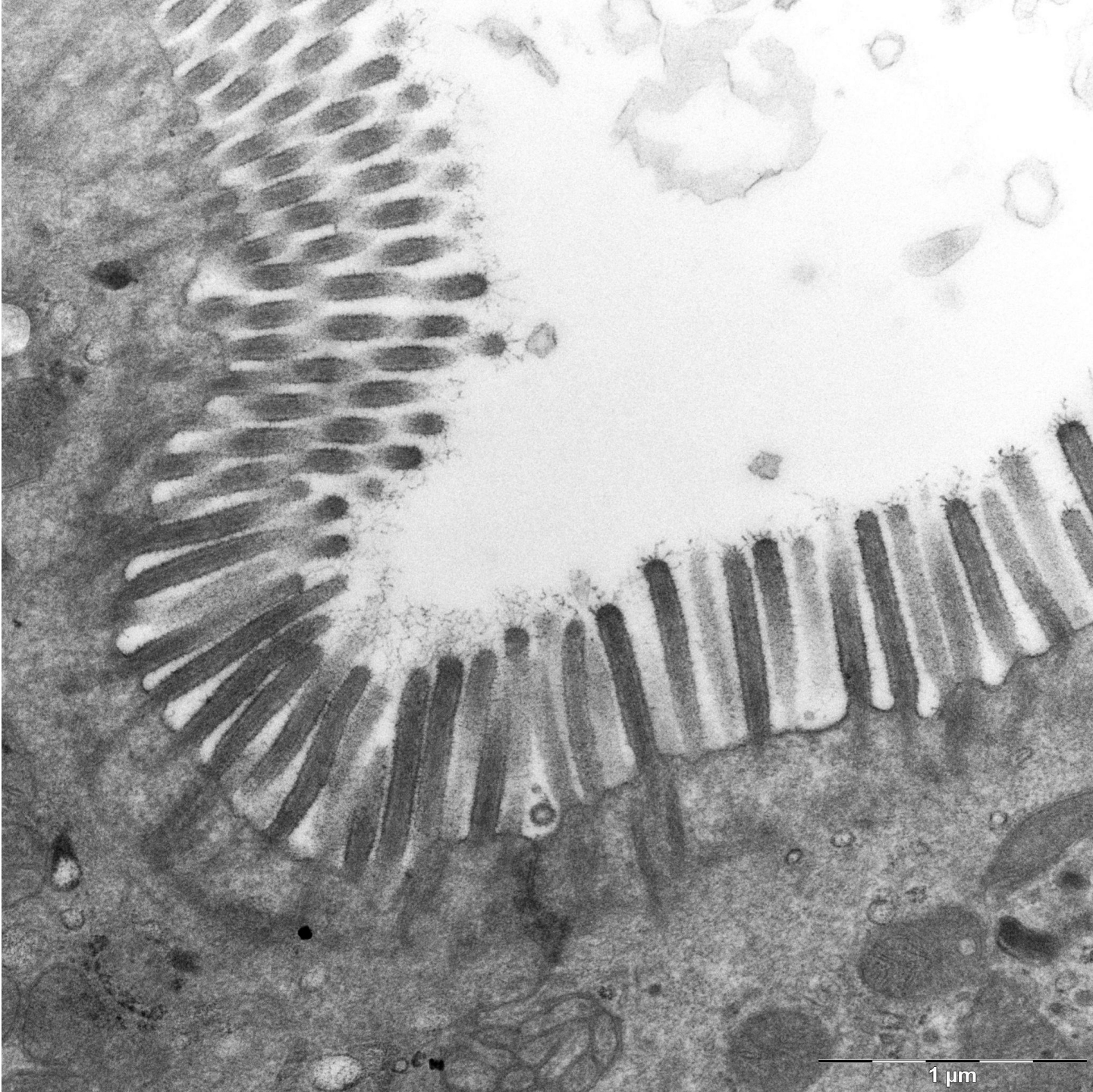


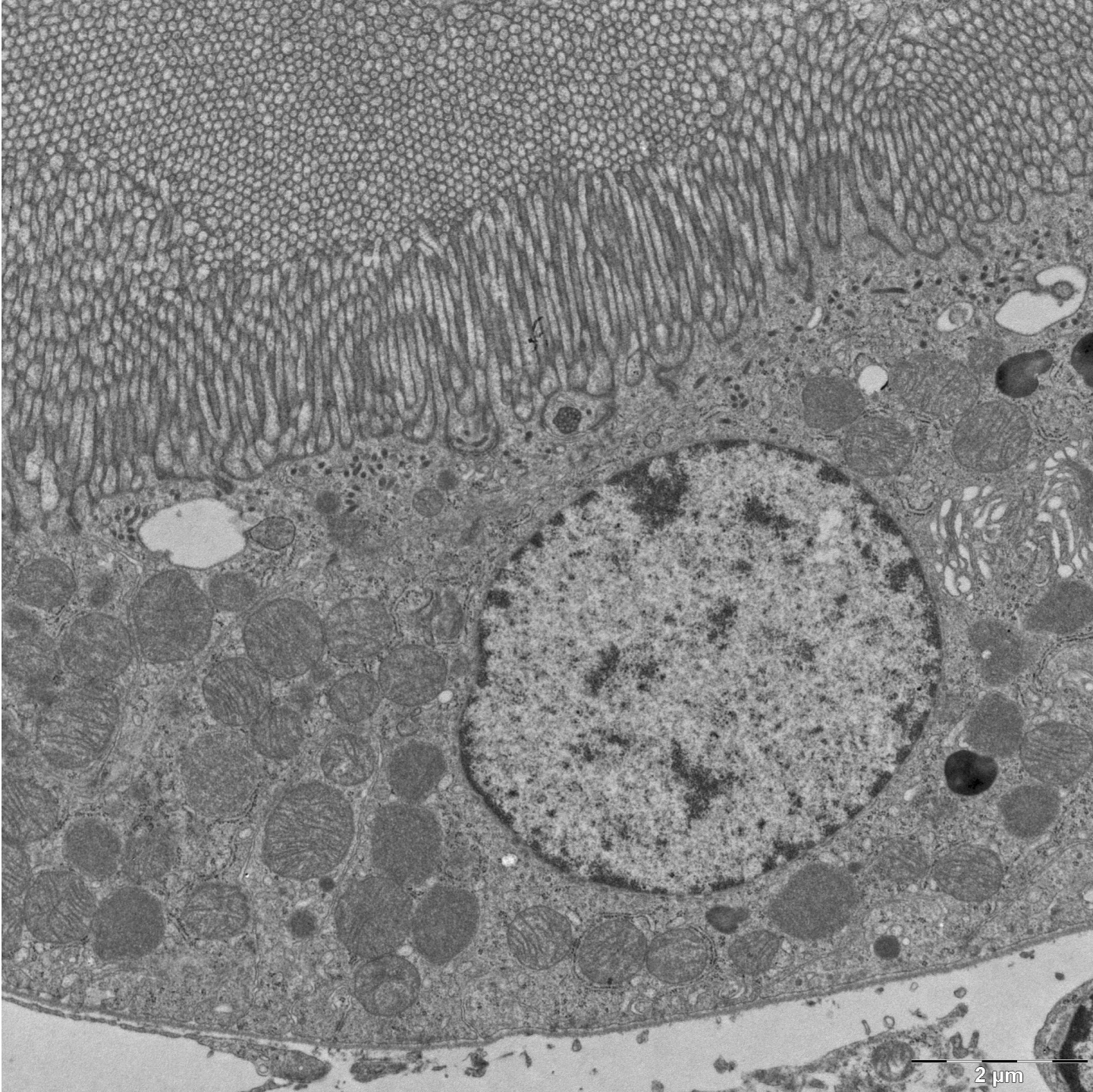
# mikrotubuly



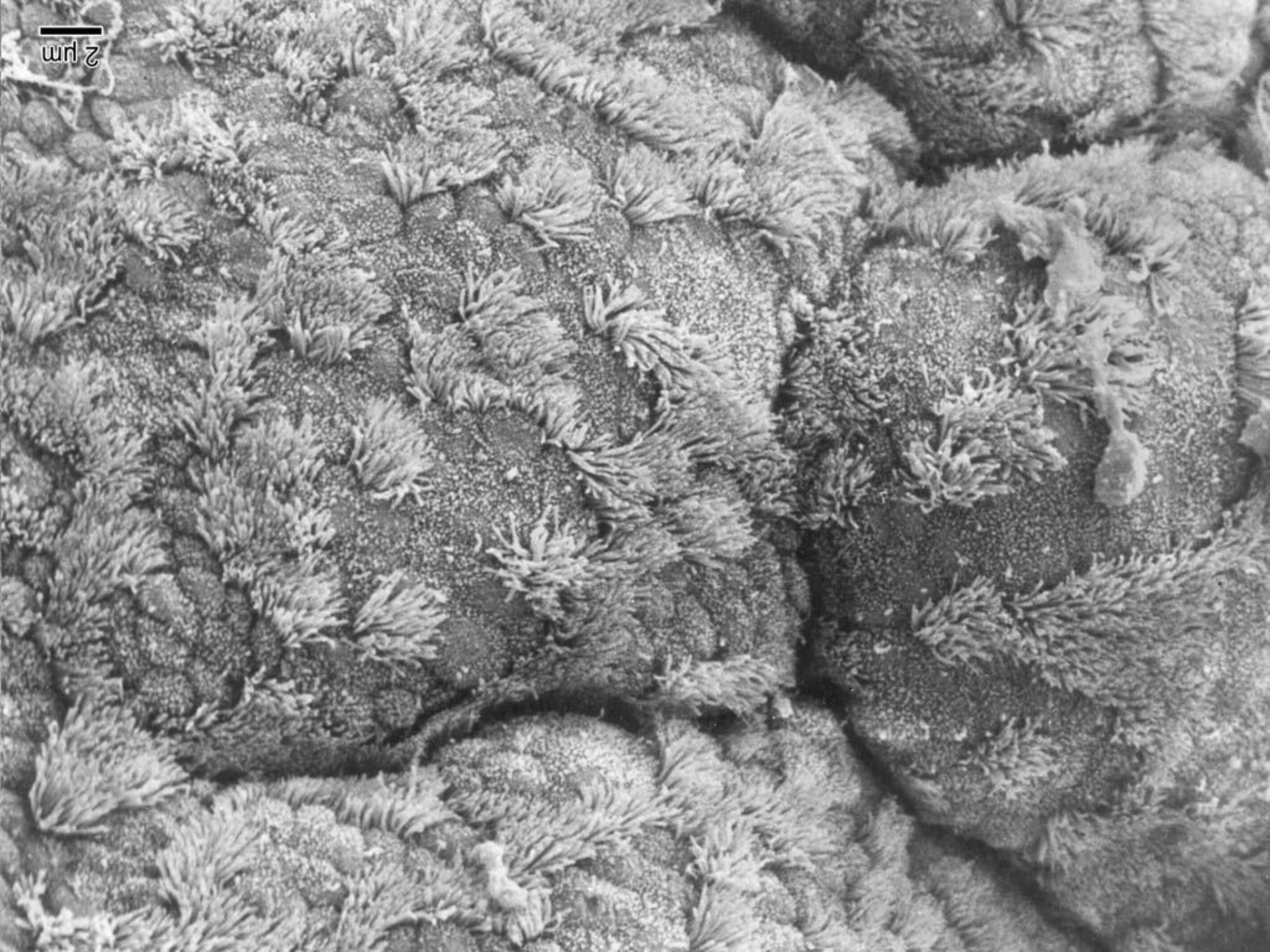


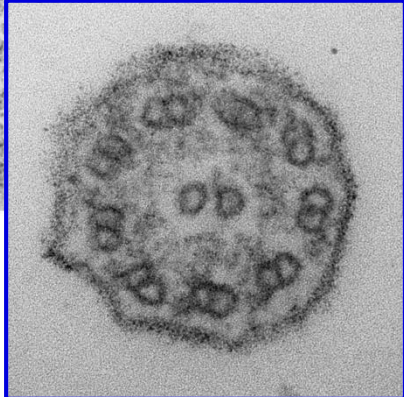
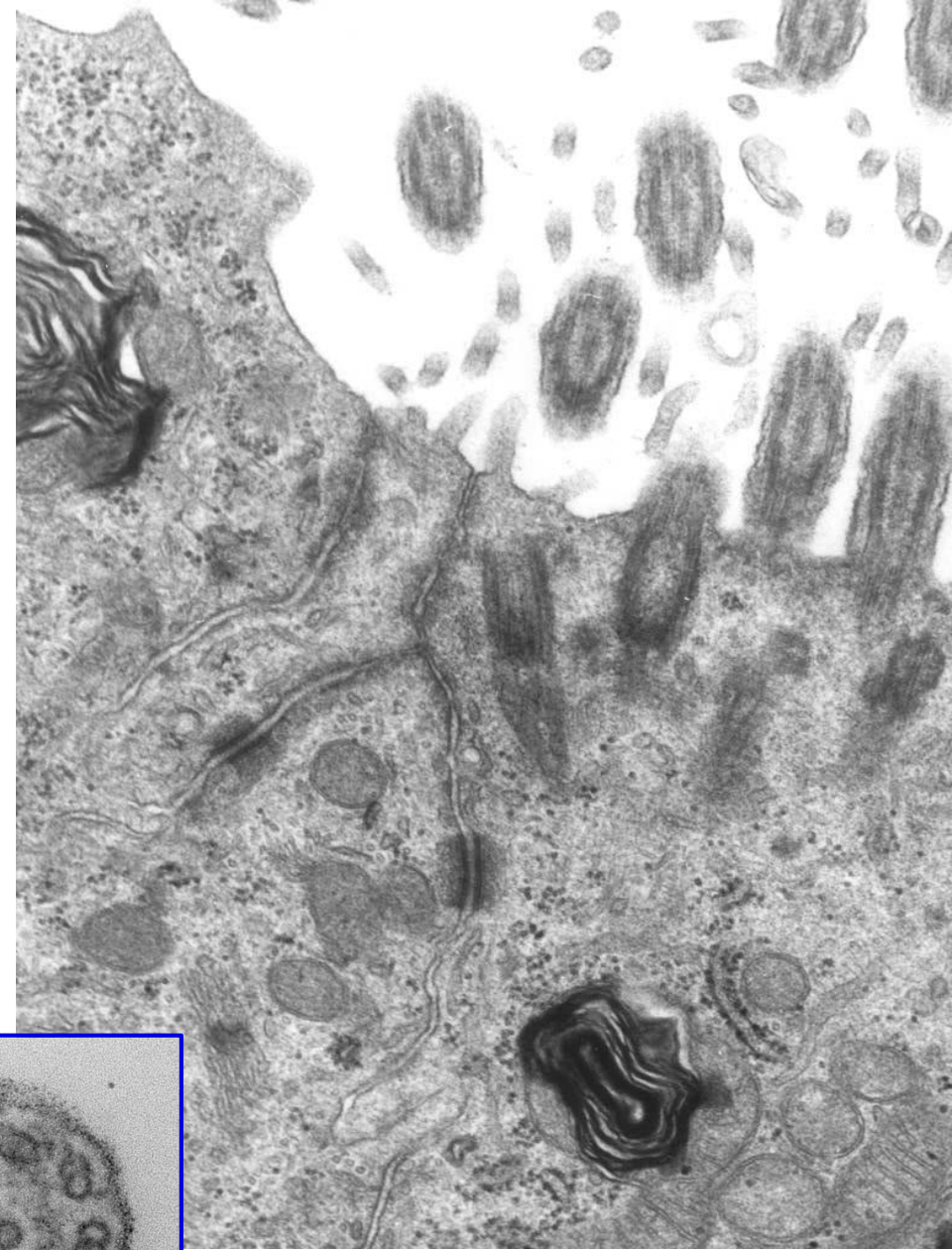
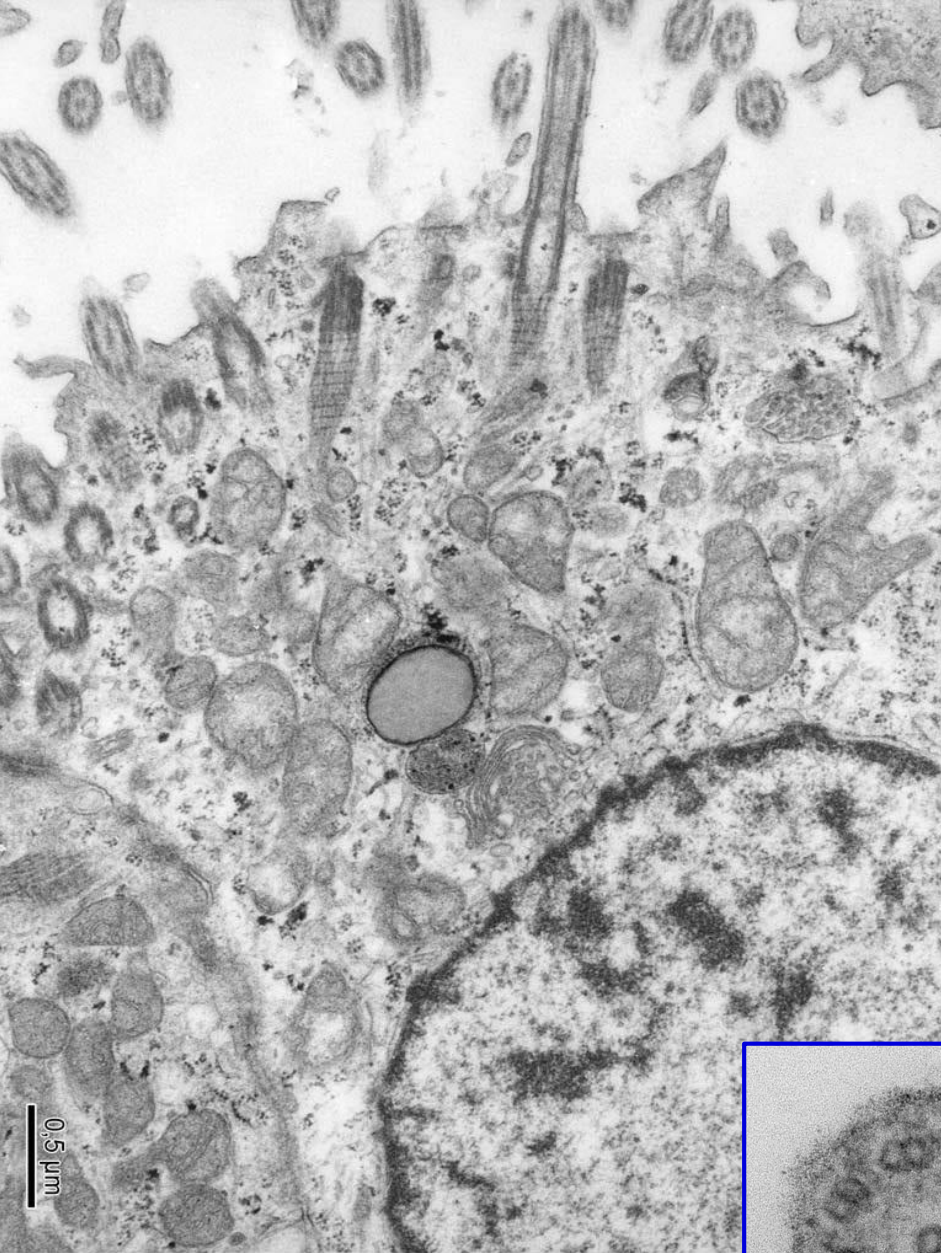


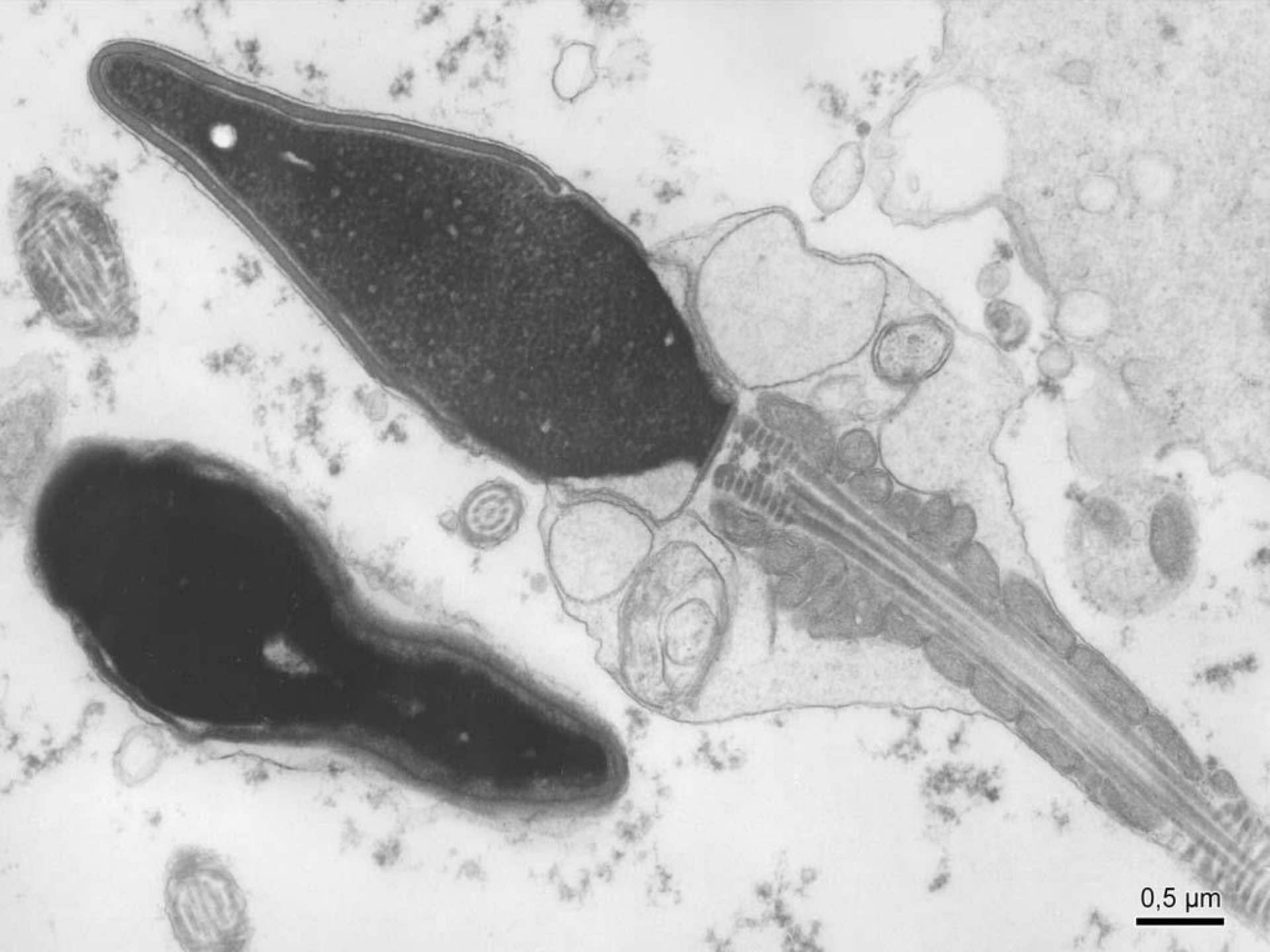




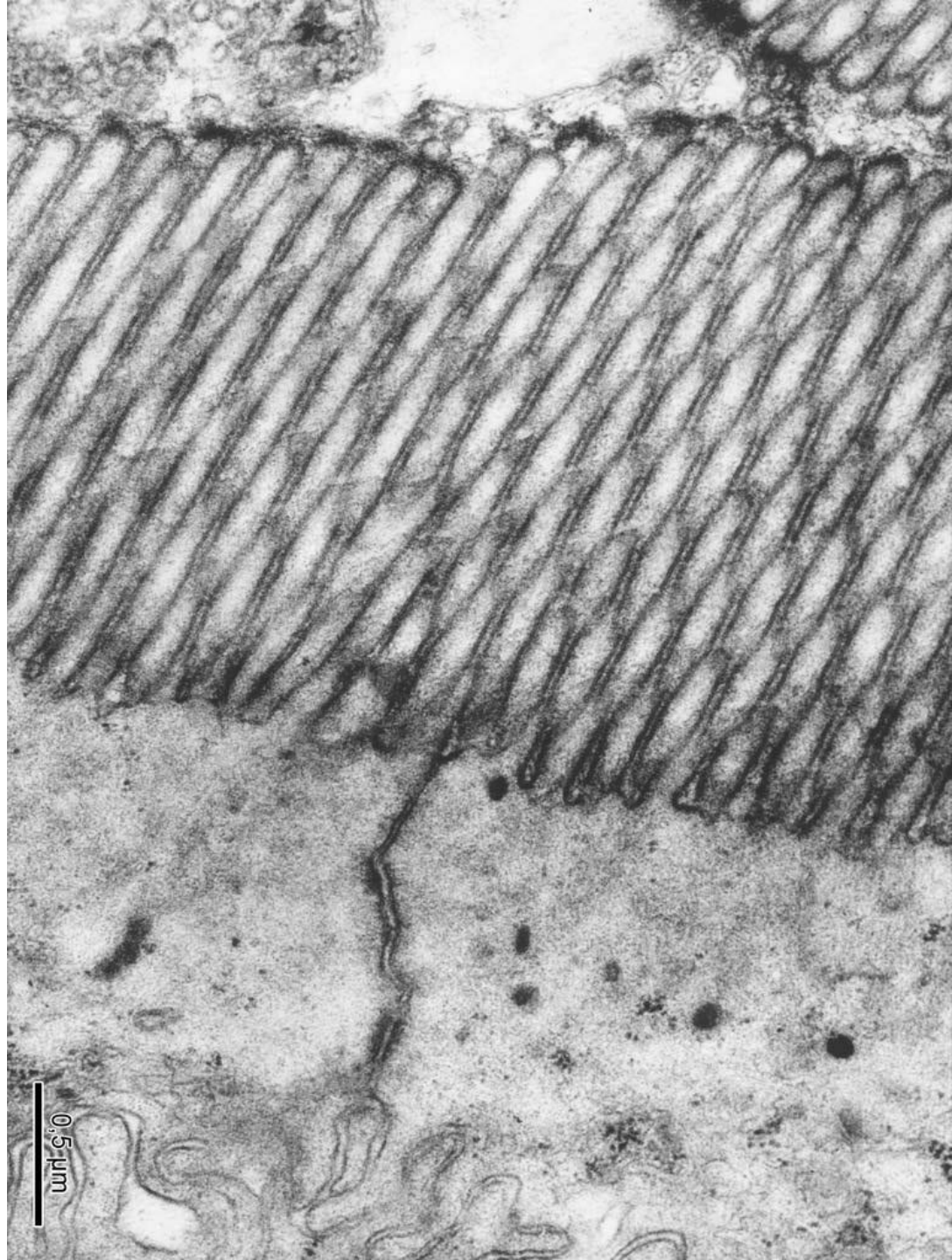
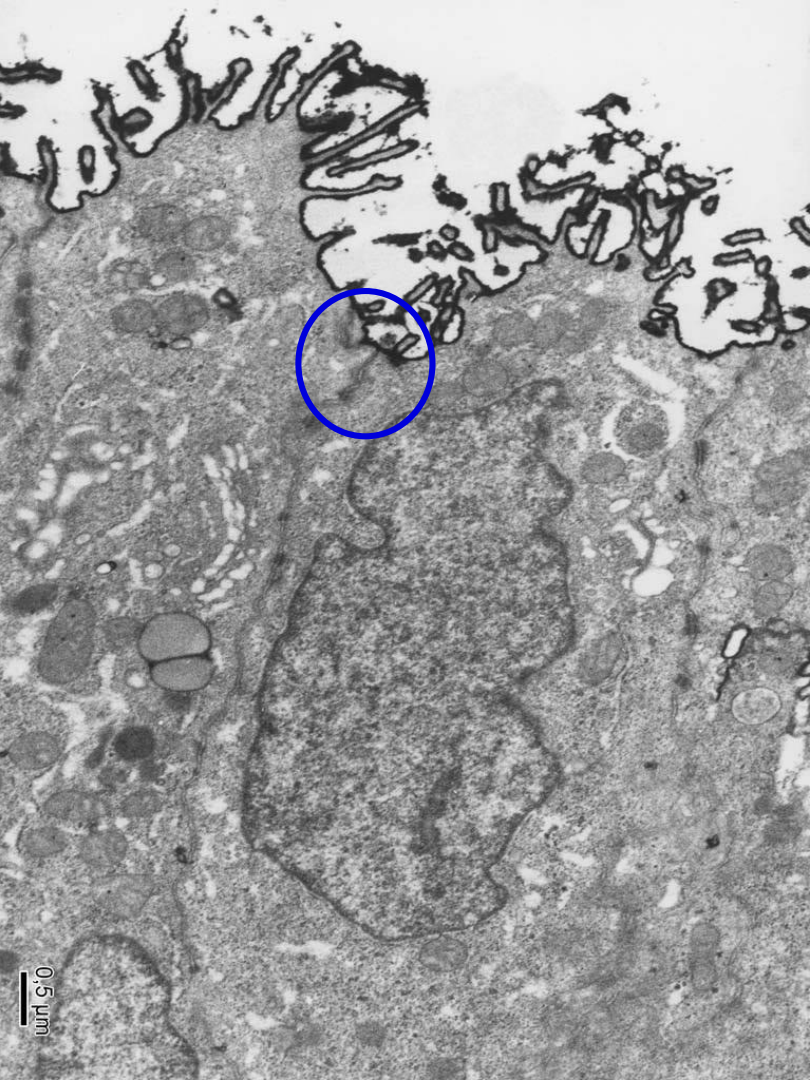
2  $\mu$ m

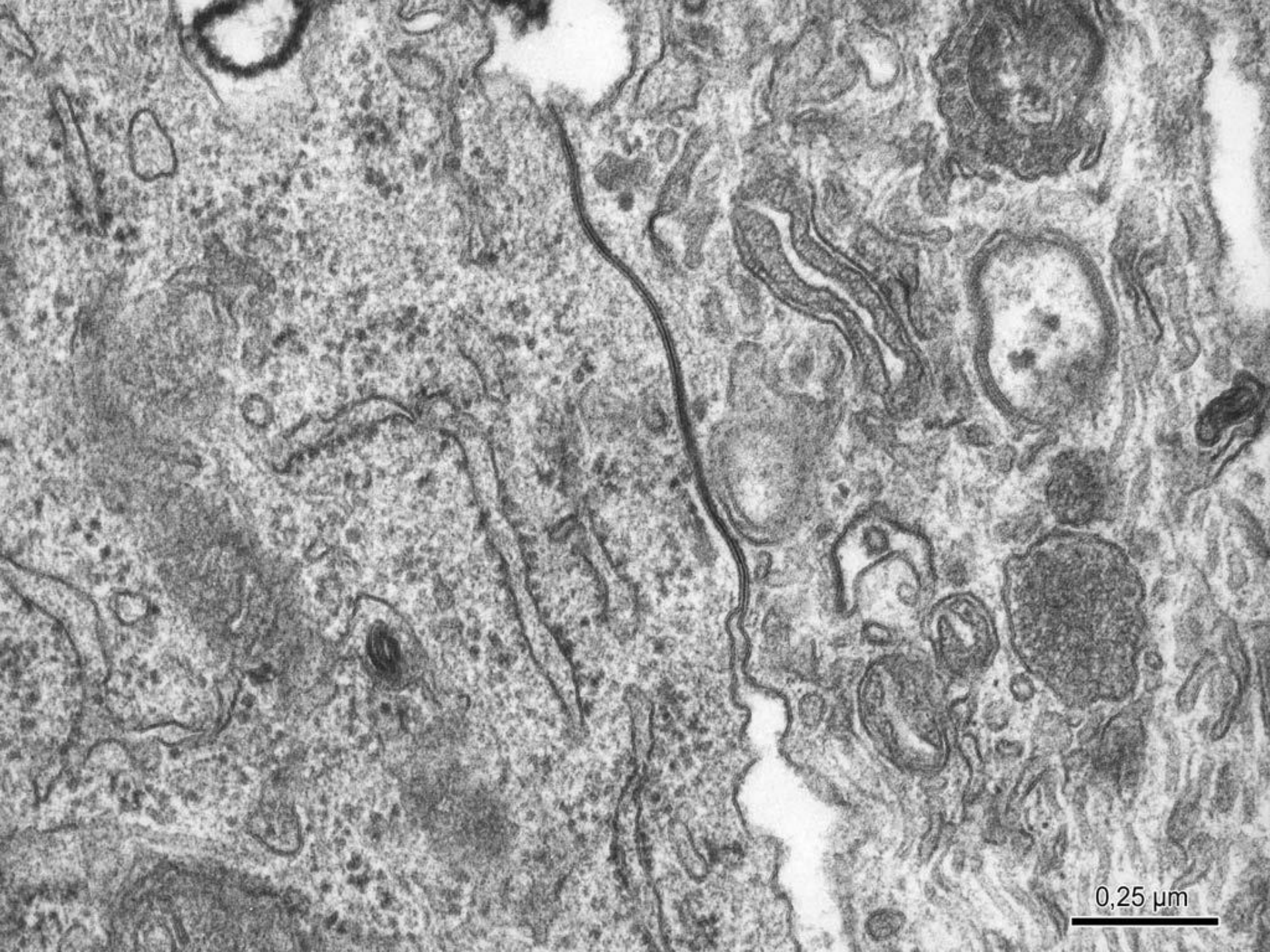






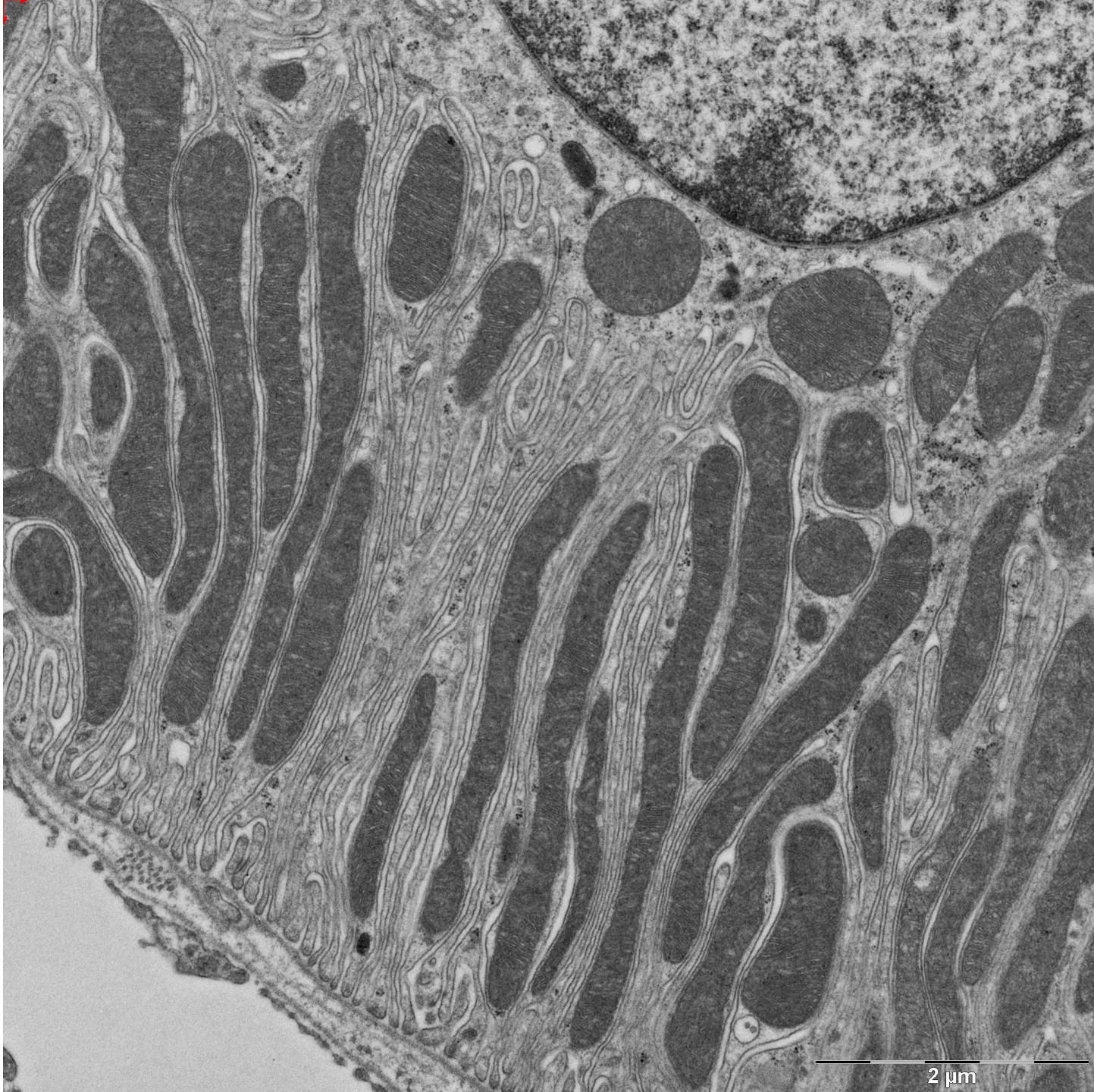
0,5 μm





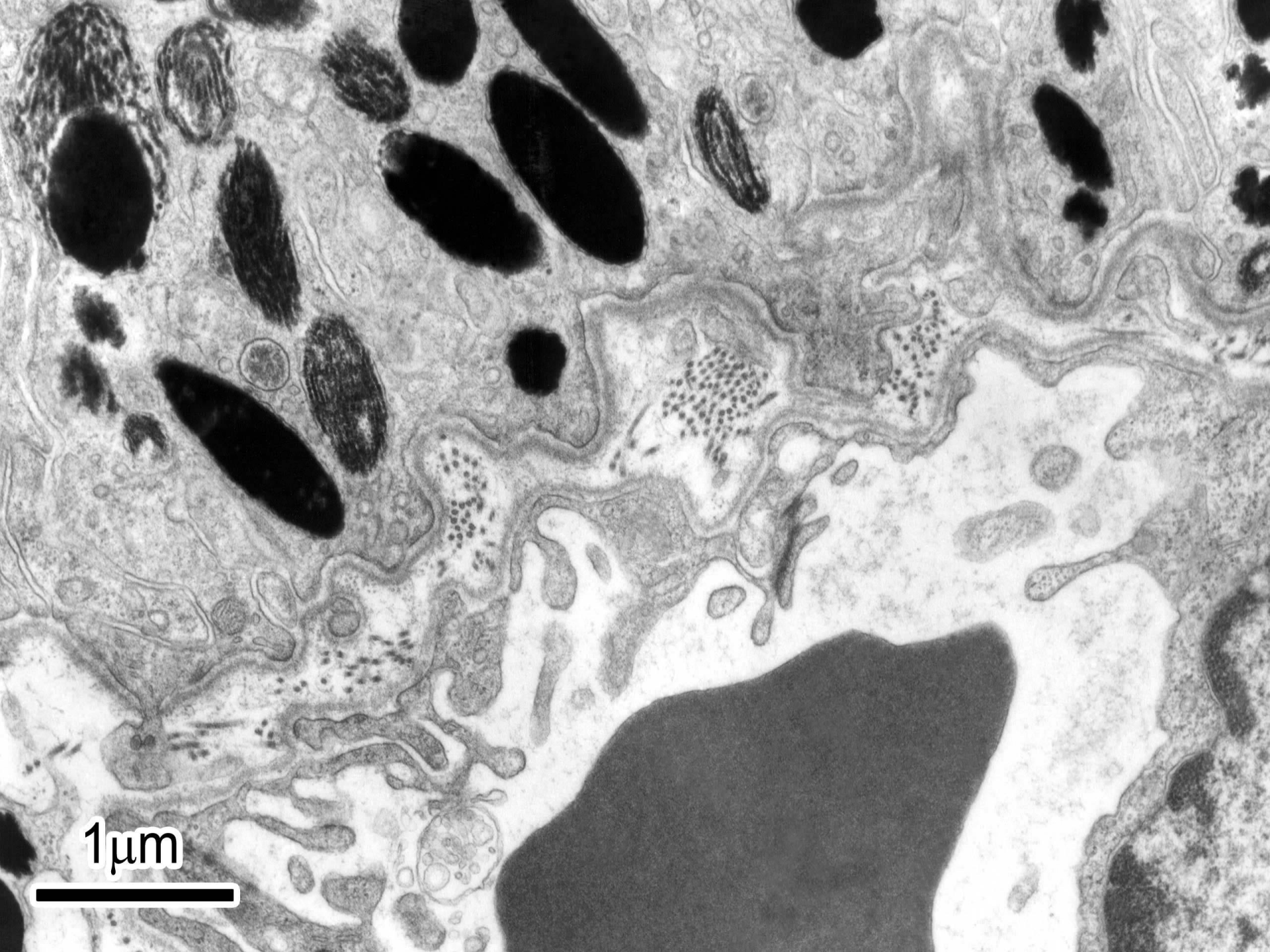
0,25 μm





2  $\mu$ m

MUNI  
MED



1 μm

# CYTOLOGIE II

- buněčné inkluze
  - glykogen ( $\alpha$ - a  $\beta$ - granula)
  - lipidové kapky
- cytoskelet
  - aktinová filamenta
  - intermediární filamenta
  - mikrotubuly
- buněčné povrchy
- mikroklky
- kinocilie
- terminální lišta
- desmosom
- nexus
- basální labyrint
- basální membrána

<b>MUNI MED</b> Ústav histologie a embryologie		Protokol č.	
Téma cvičení:		Studijní skupina:	Datum:
UČO/Jméno:			
Obor/Ročník:			
<u>Seznam preparátů ke studiu (Box):</u>		<u>Seznam elektronogramů (Atlas)</u>	
Číslo	název a barvení	Číslo	název elektronogramu
.....	.....	.....	.....
.....	.....	.....	.....
.....	.....	.....	.....
.....	.....	.....	.....
.....	.....	.....	.....
.....	.....	.....	.....
.....	.....	.....	.....
.....	.....	.....	.....
.....	.....	.....	.....
.....	.....	.....	.....
.....	.....	.....	.....
.....	.....	.....	.....
.....	.....	.....	.....

Atlas: strany **12-27**

Web: [https://is.muni.cz/do/rect/el/estud/lf/js18/histologie\\_atlas/web/atlas\\_OH.html?chapter=0](https://is.muni.cz/do/rect/el/estud/lf/js18/histologie_atlas/web/atlas_OH.html?chapter=0)