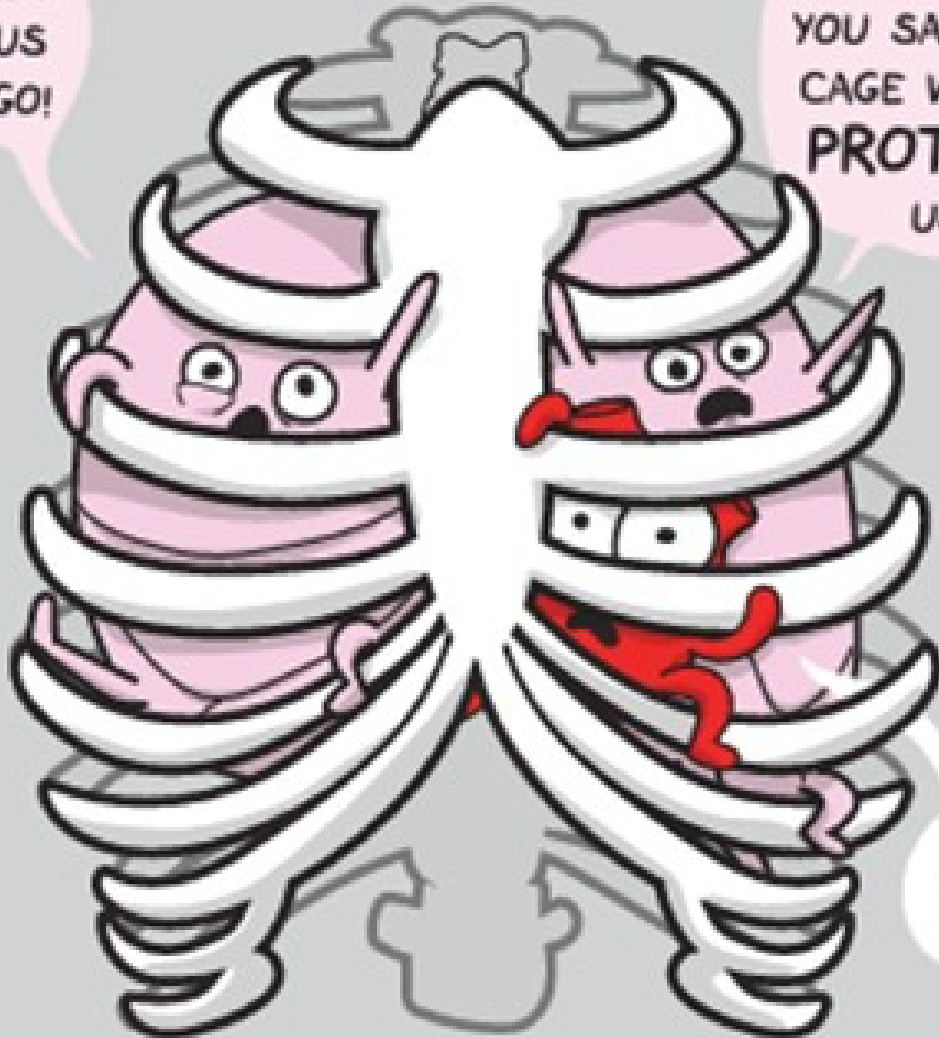


LET US GO!

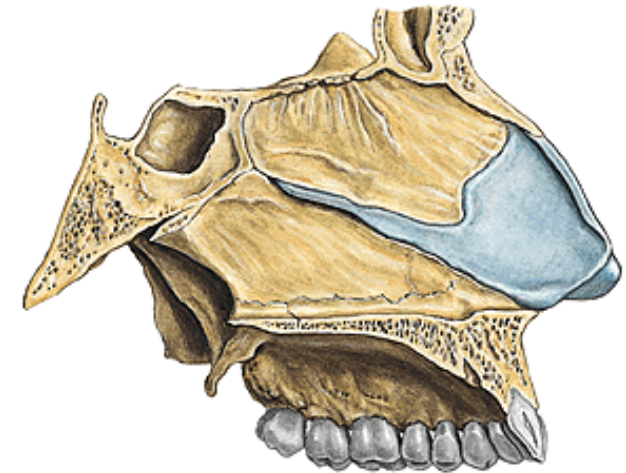
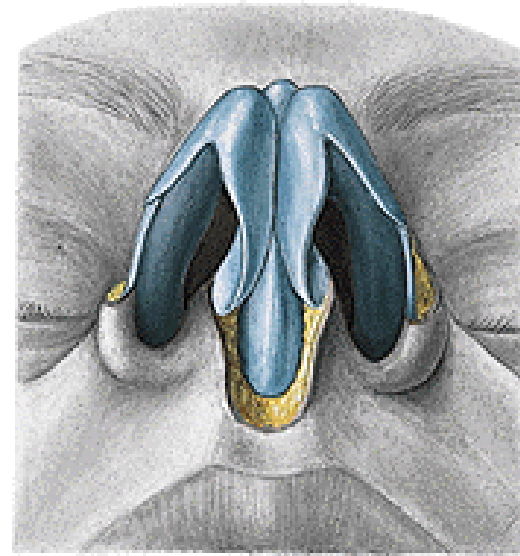
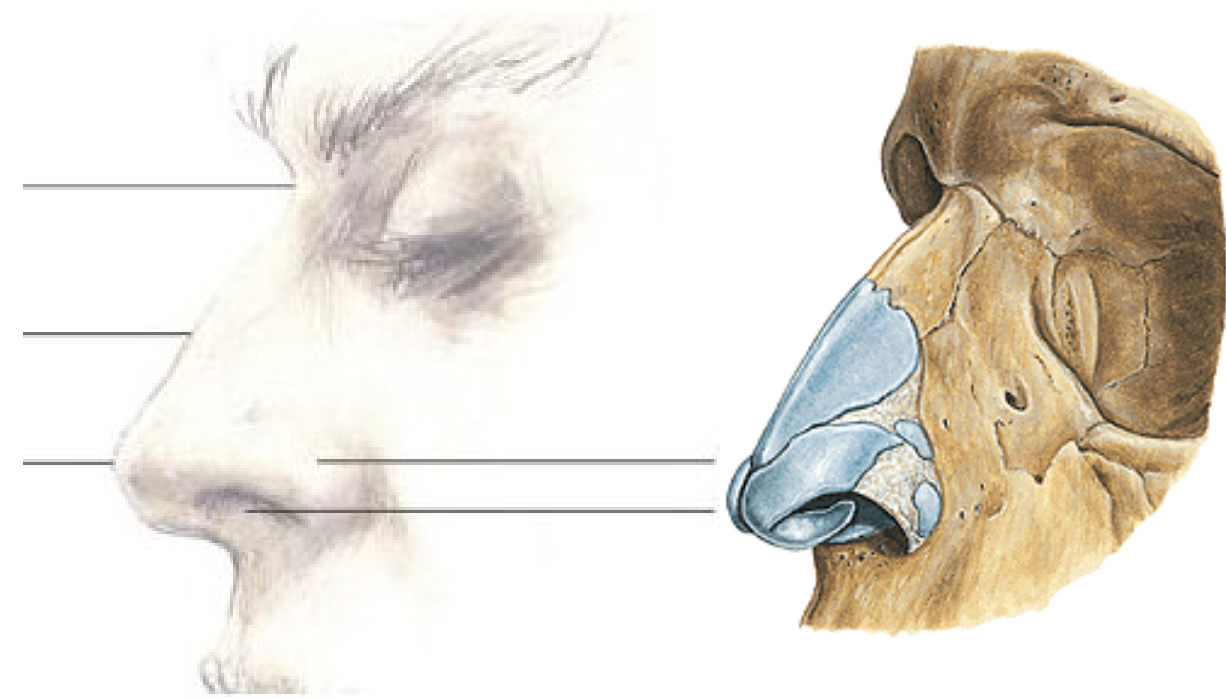
YOU MONSTER!
YOU SAID THIS
CAGE WAS TO
PROTECT
US!



I taste blood!

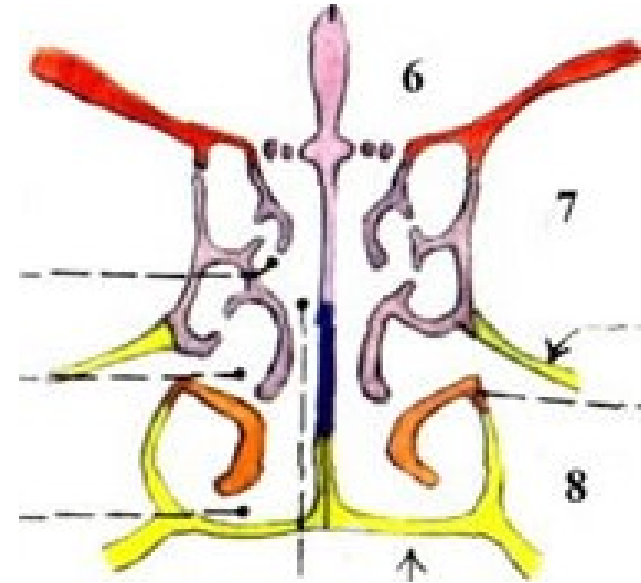
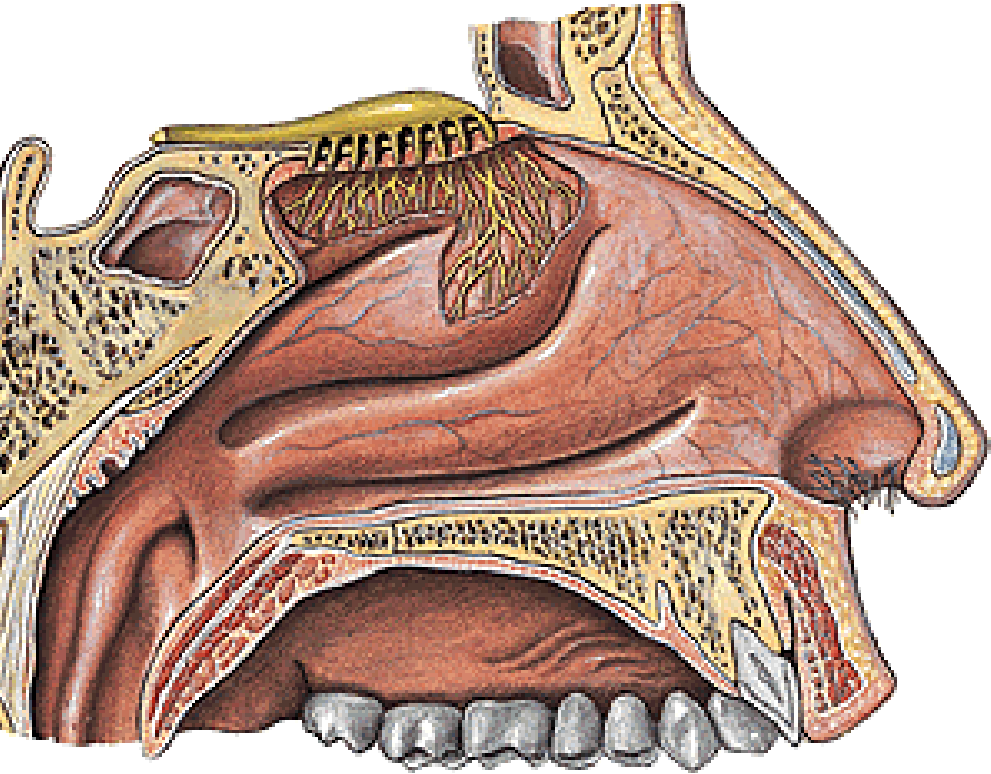
What happens during a run.

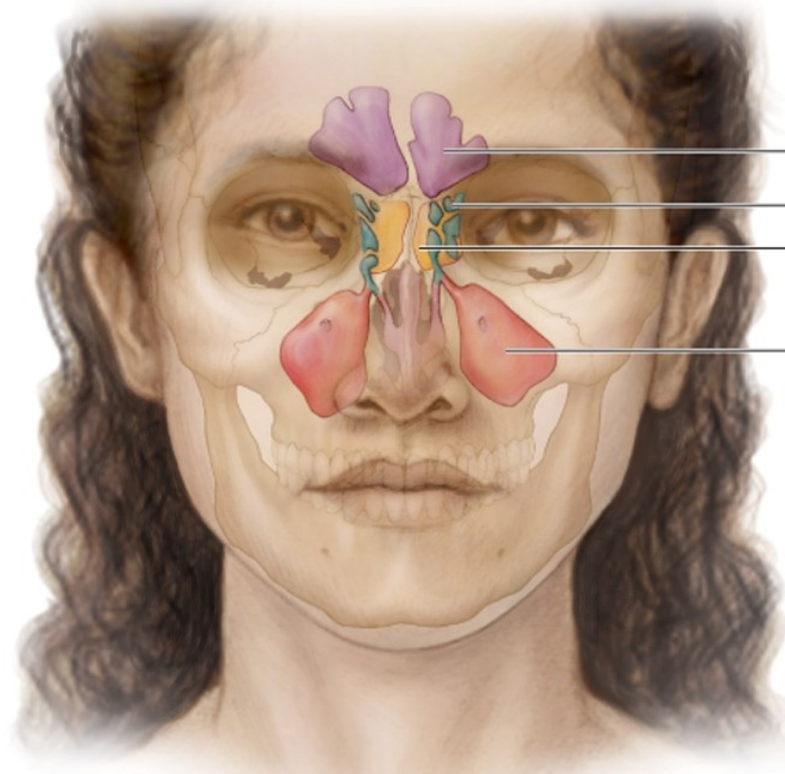
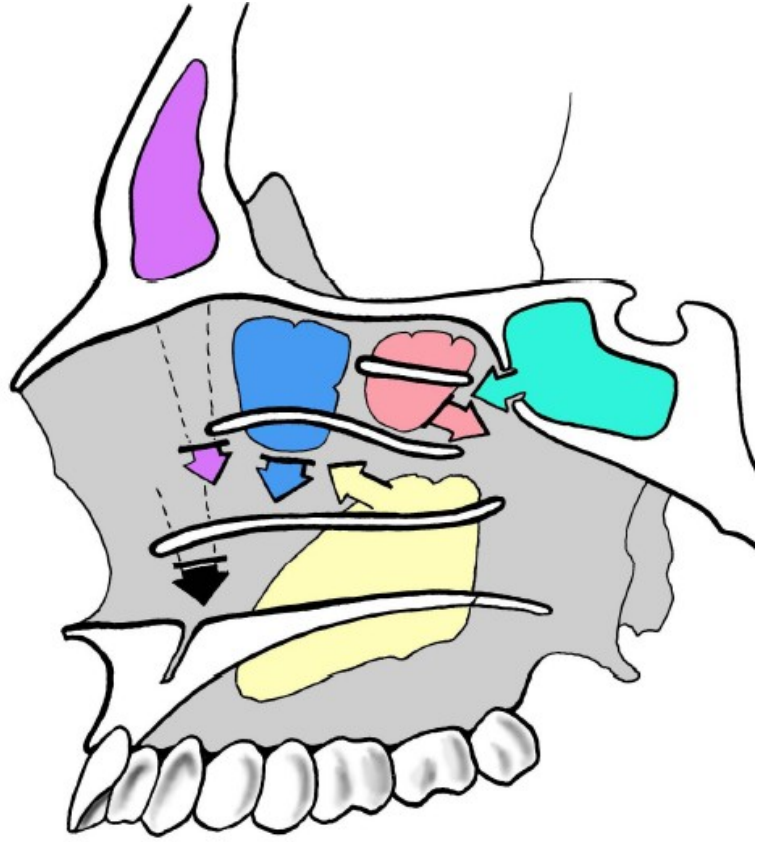
Nasus externus – části, strukturální podklad

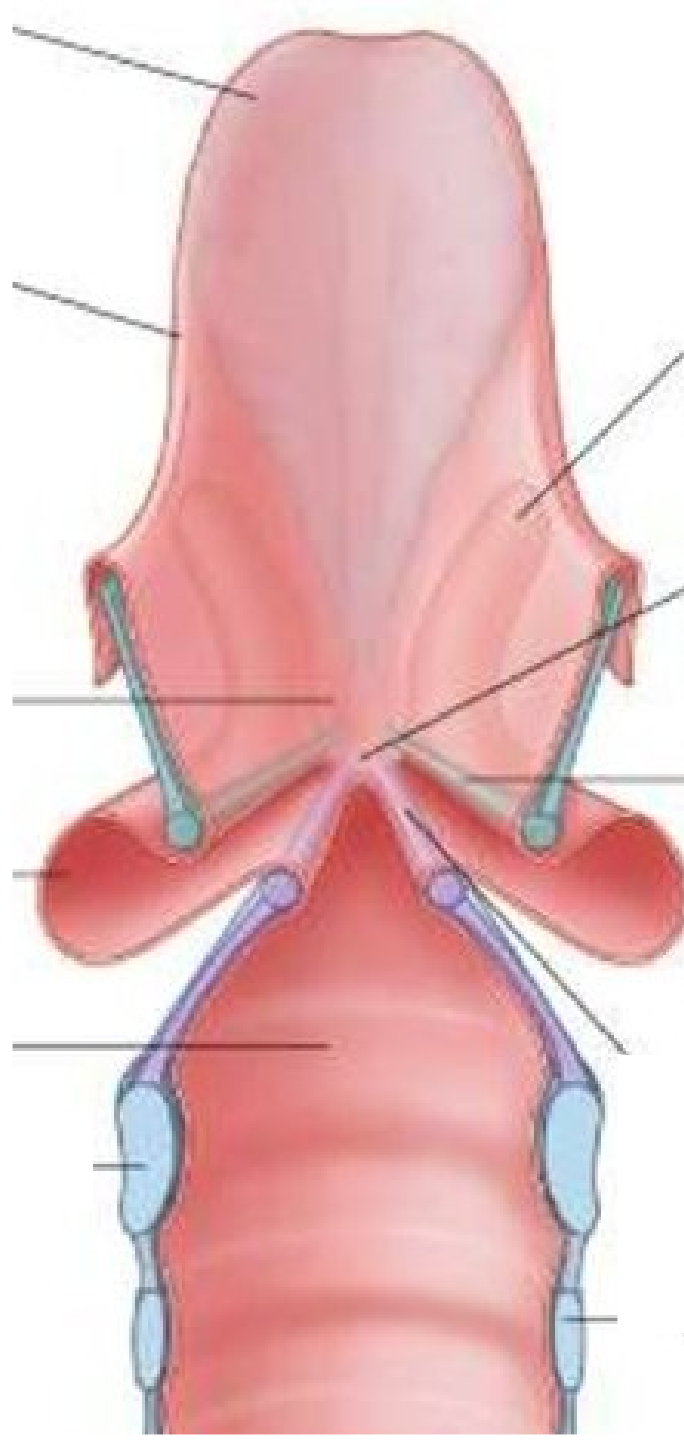


Vestibulum nasi

Cavitas nasi (ohraničení, funkce, regia)





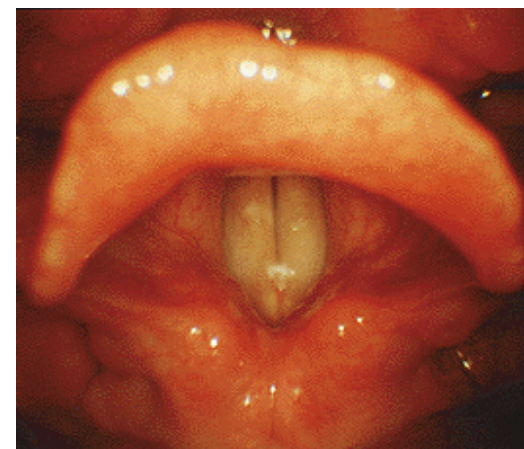


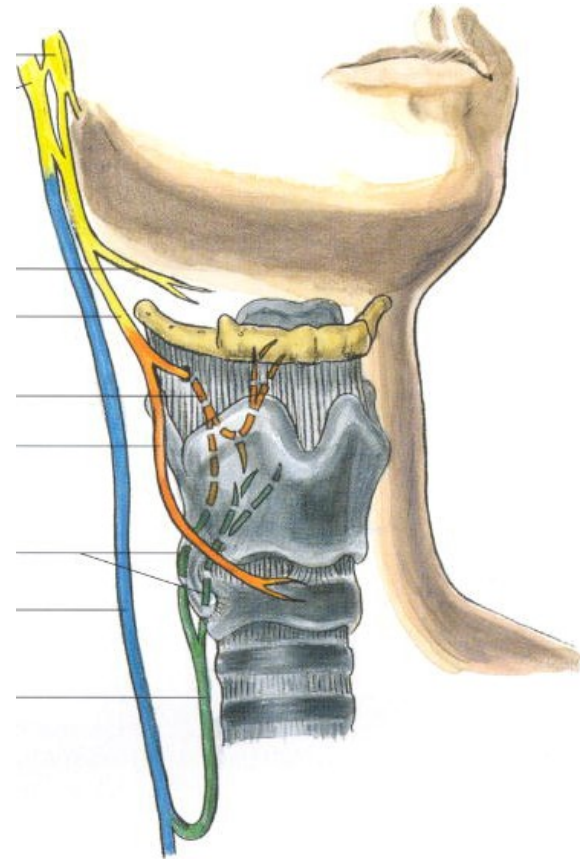
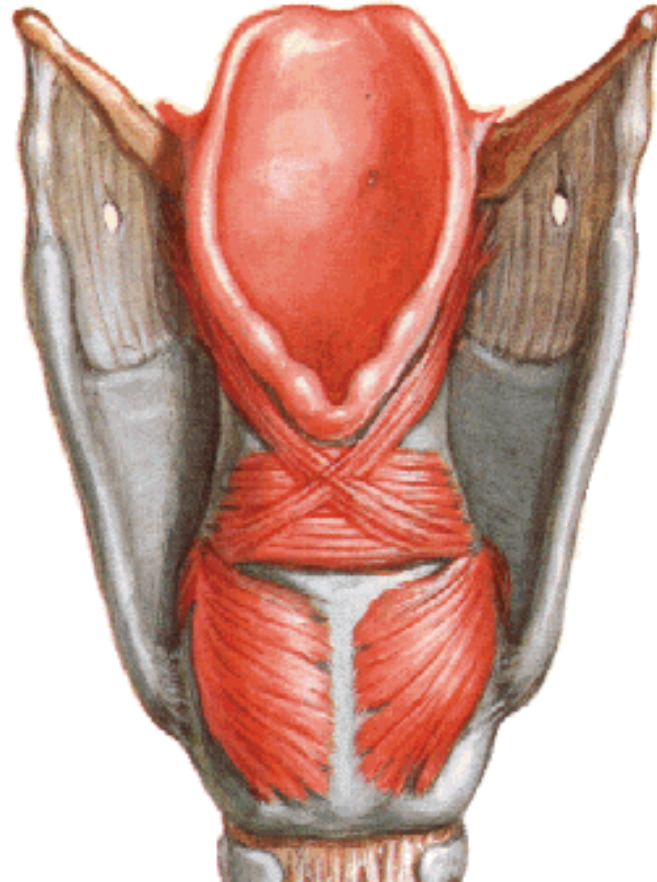
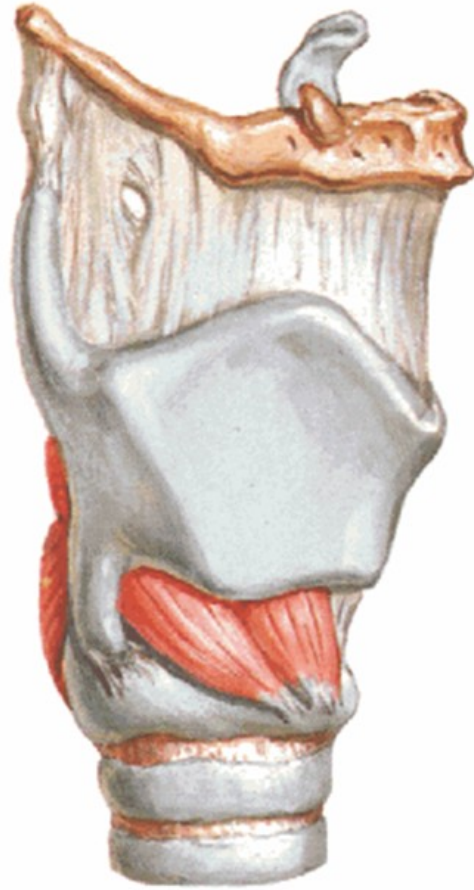
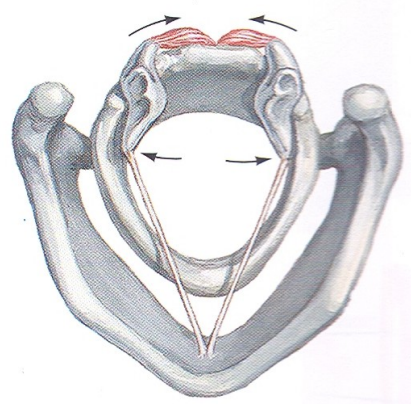
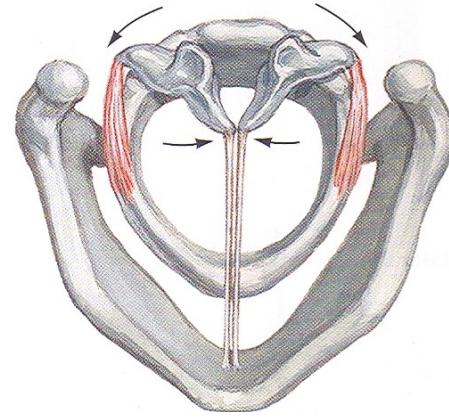
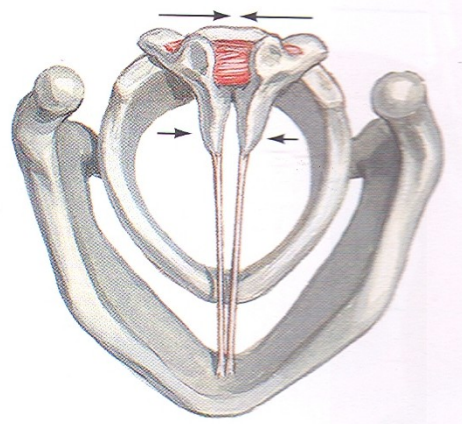
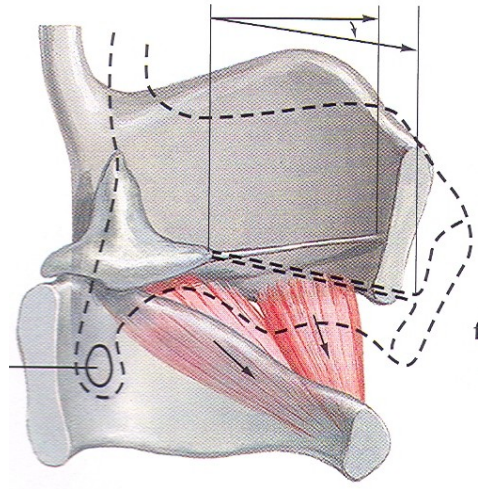
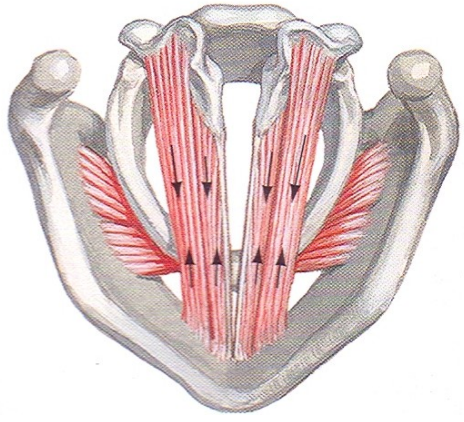
Larynx: chrupavky laryngu

Larynx: spoje laryngu

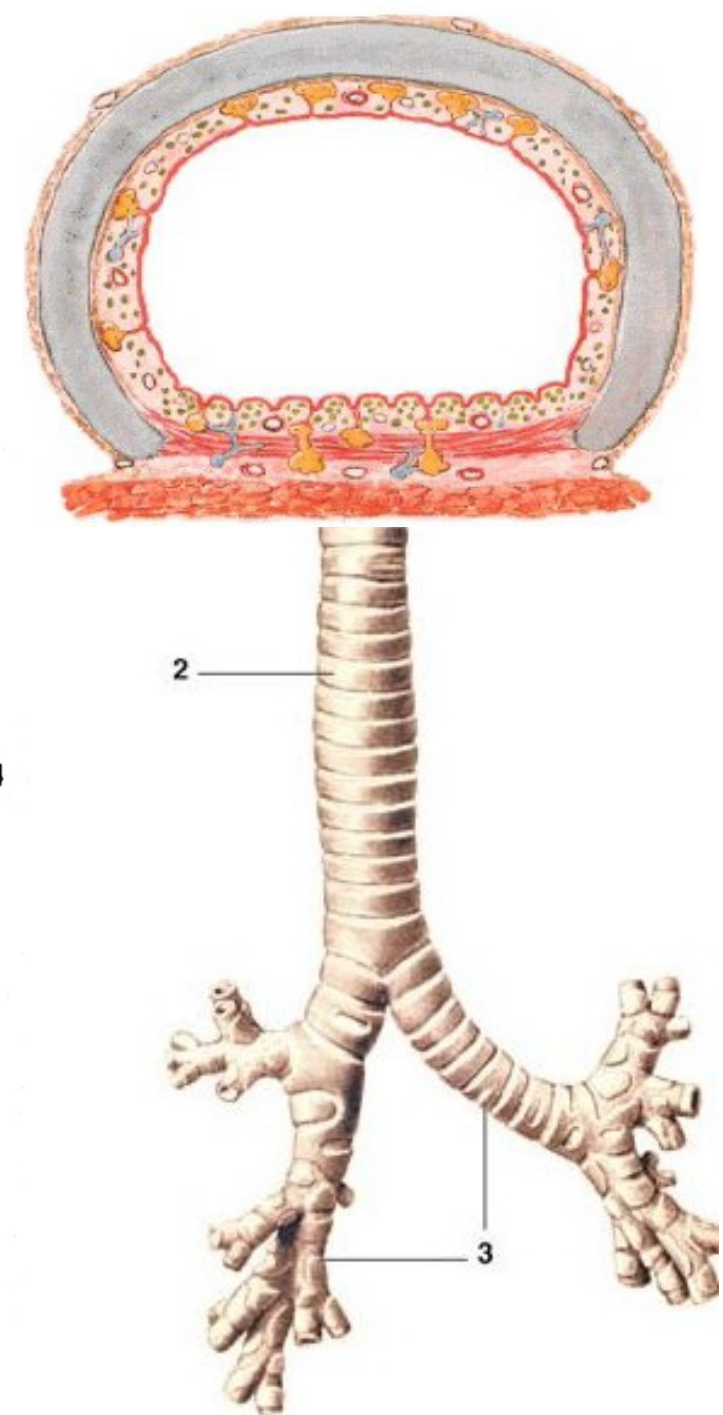
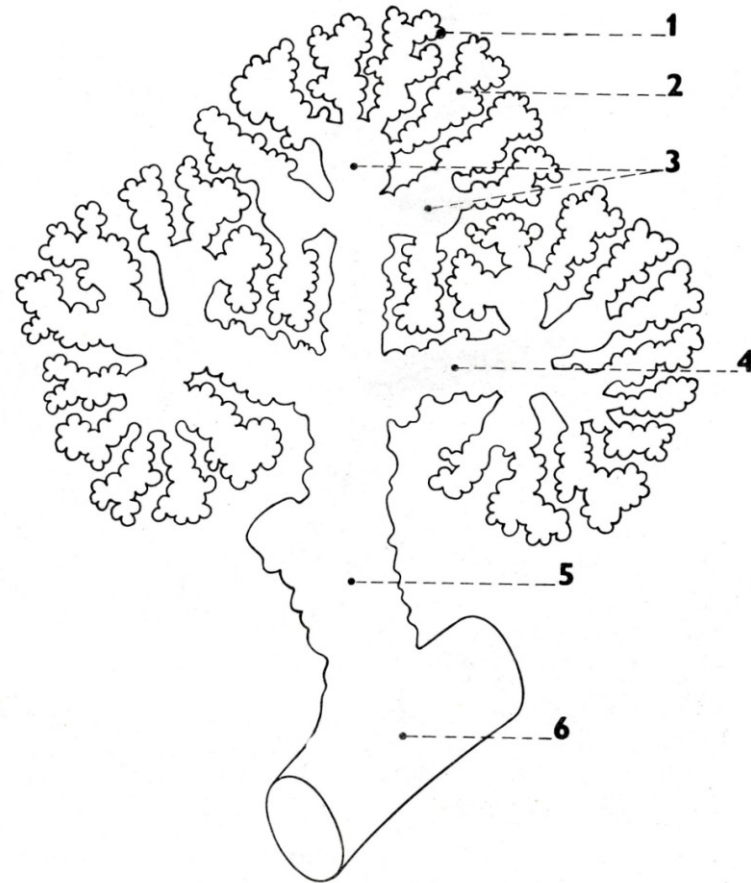
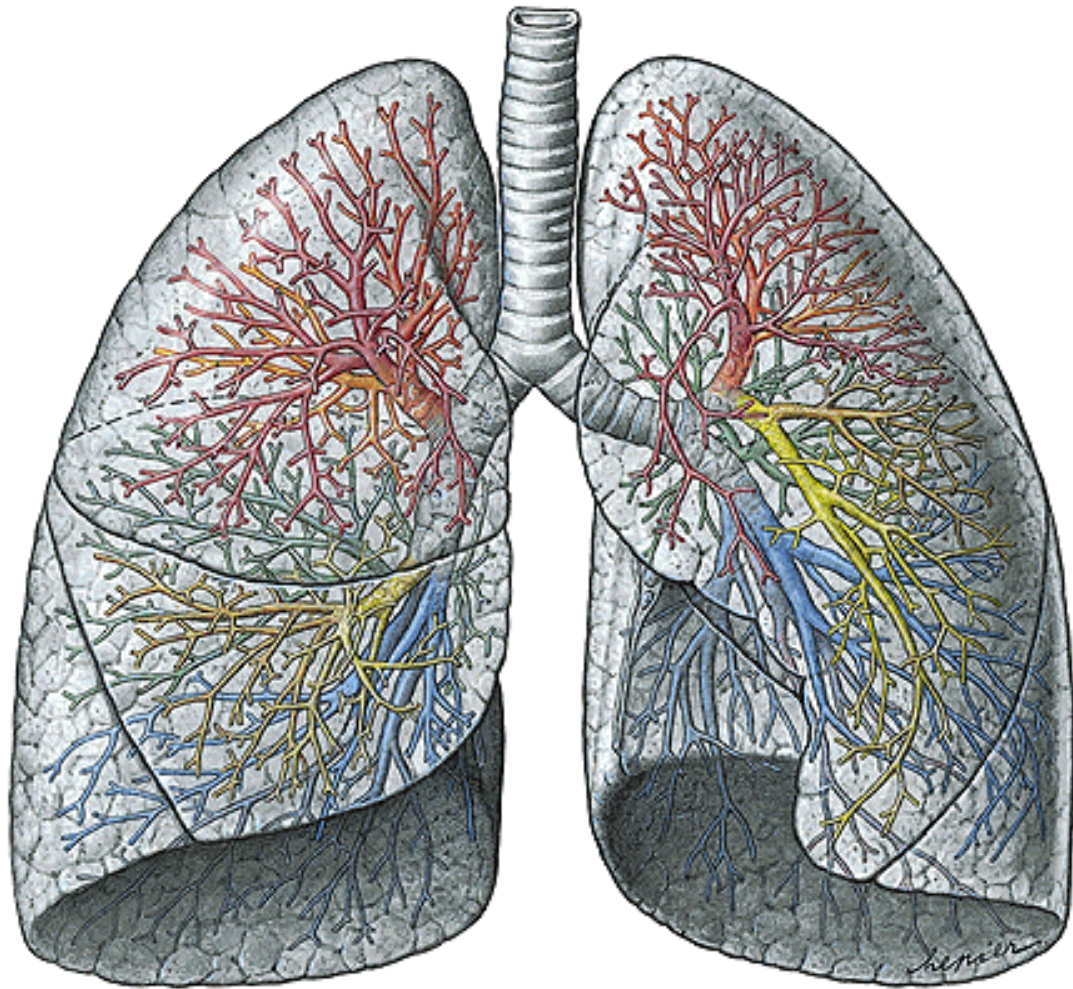
Larynx: svaly laryngu, funkční členění

Larynx: cavitas laryngis



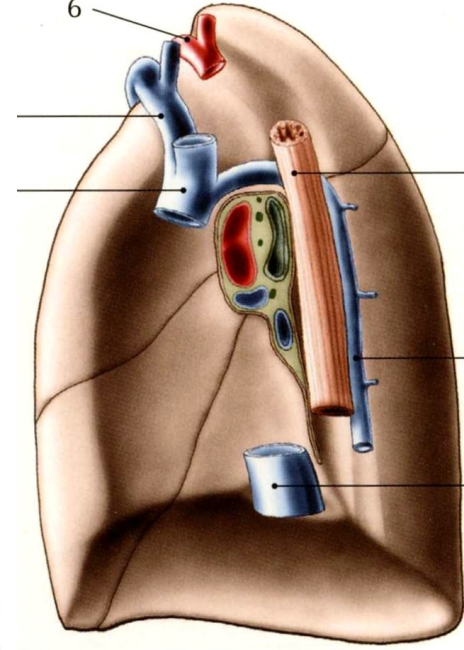
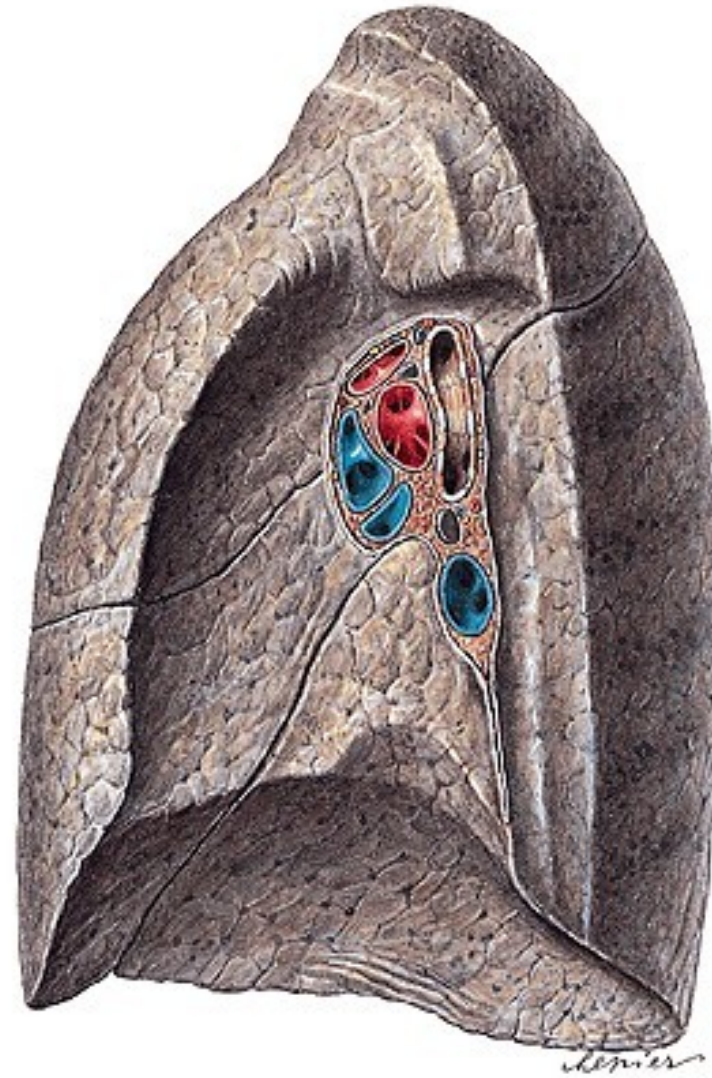
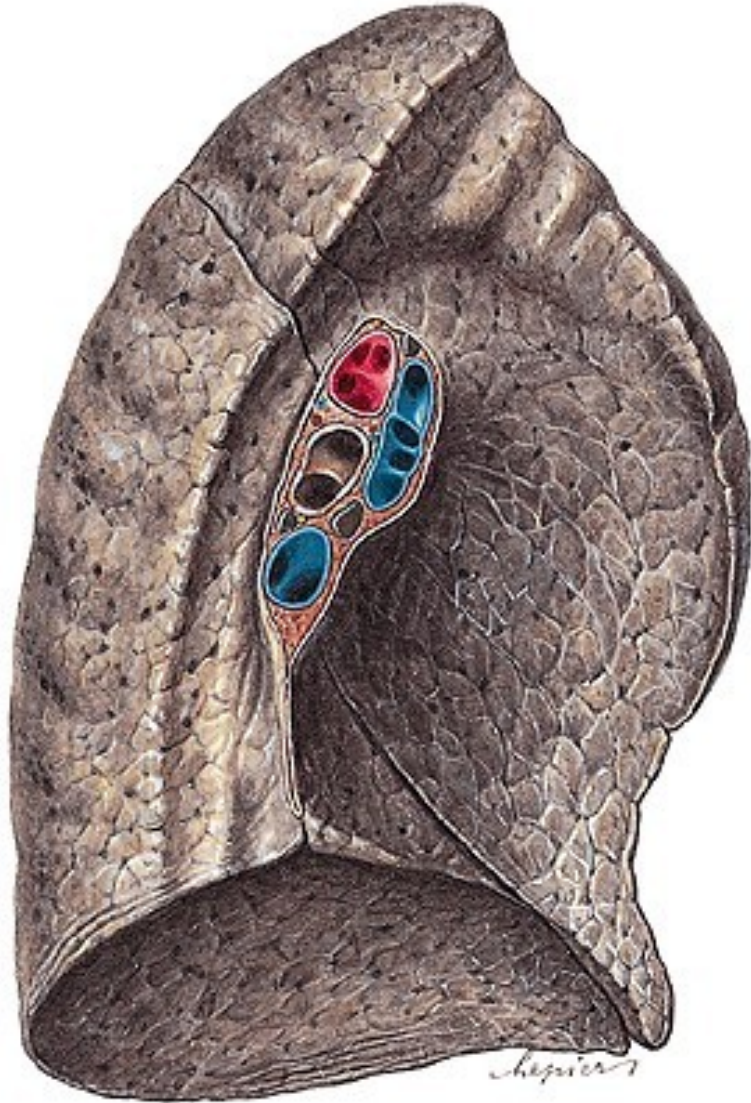
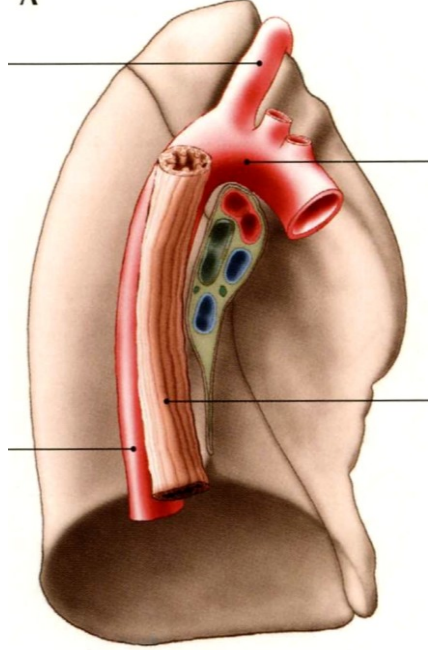


Trachea: stavba stěny, syntopie, bronchus principalis, arbor bronchialis



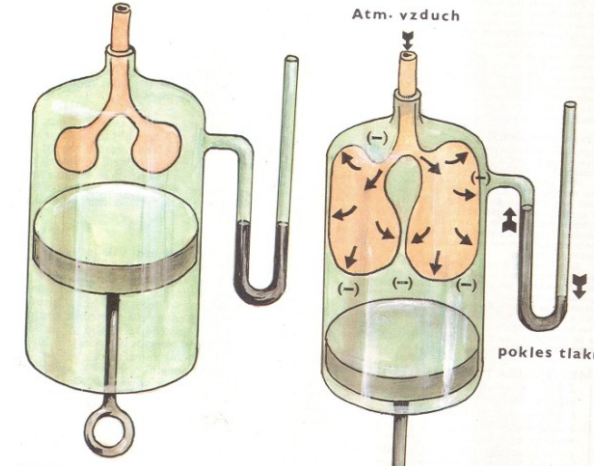
Plíce: zevní popis, členění na laloky, syntopie

Plicní stopka

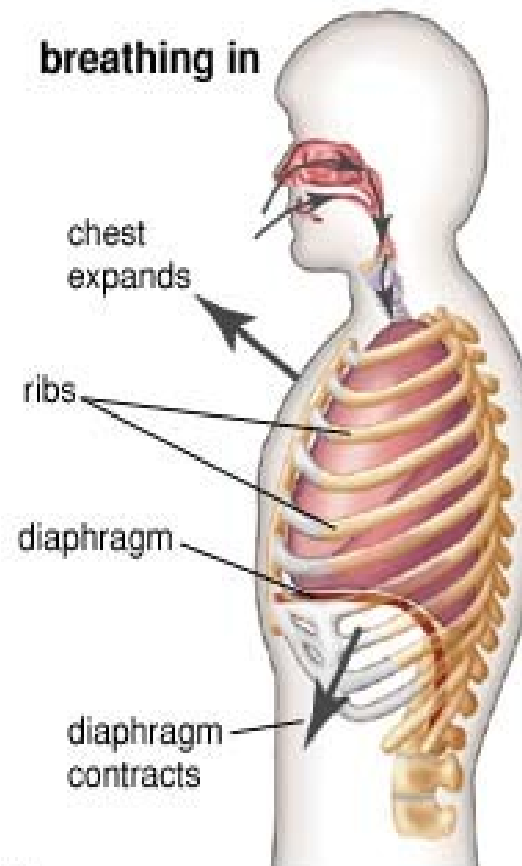


Mechanismus vdechu, hlavní a pomocné svaly

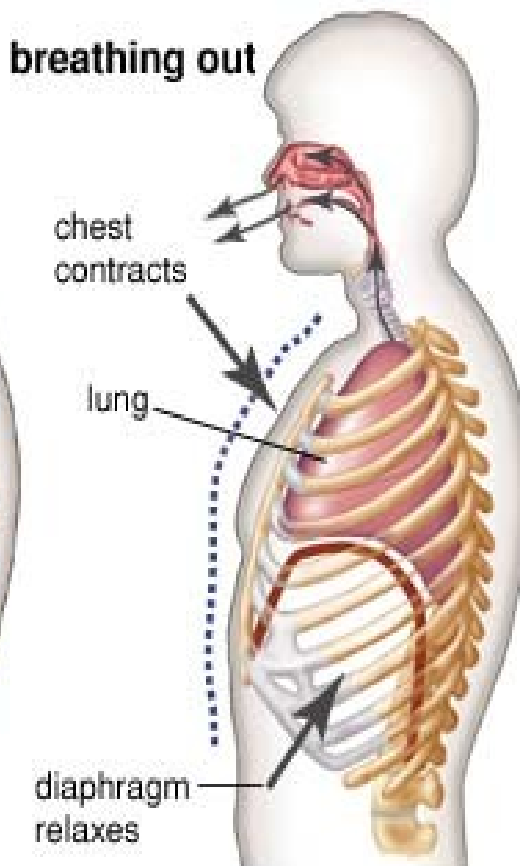
Mechanismus výdechu, hlavní a pomocné svaly



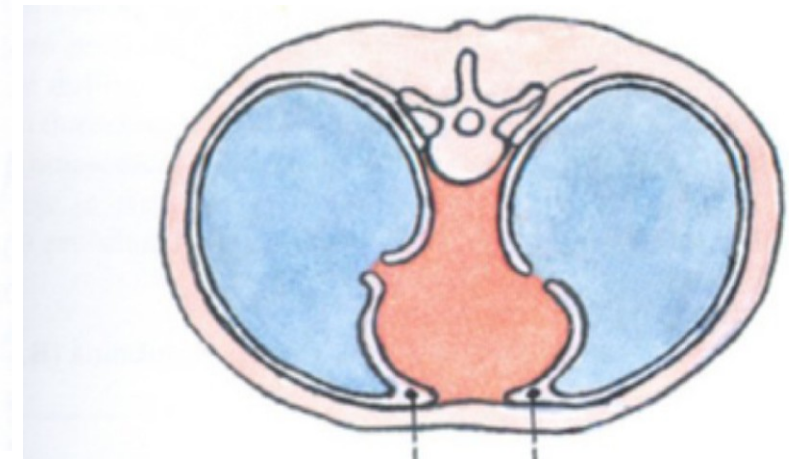
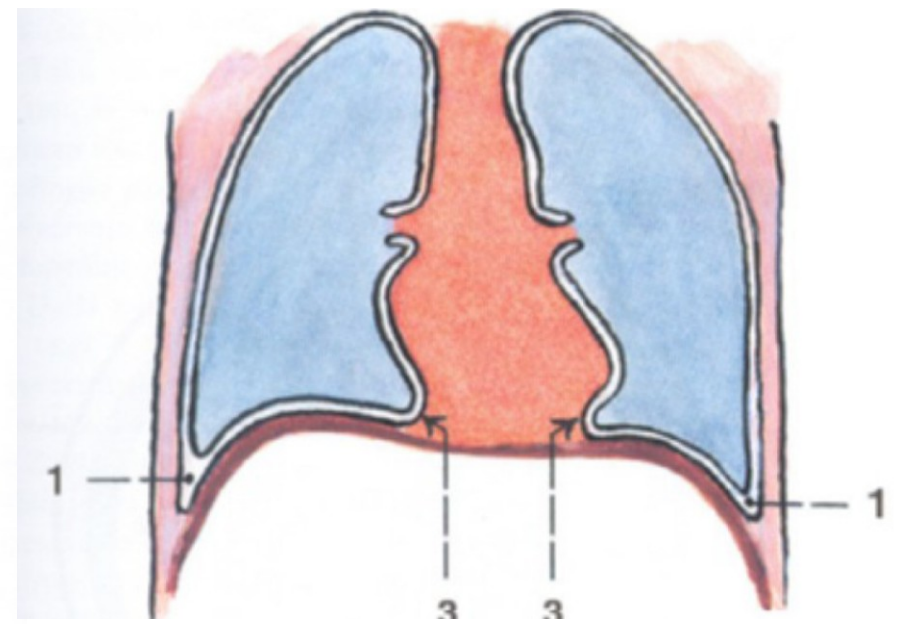
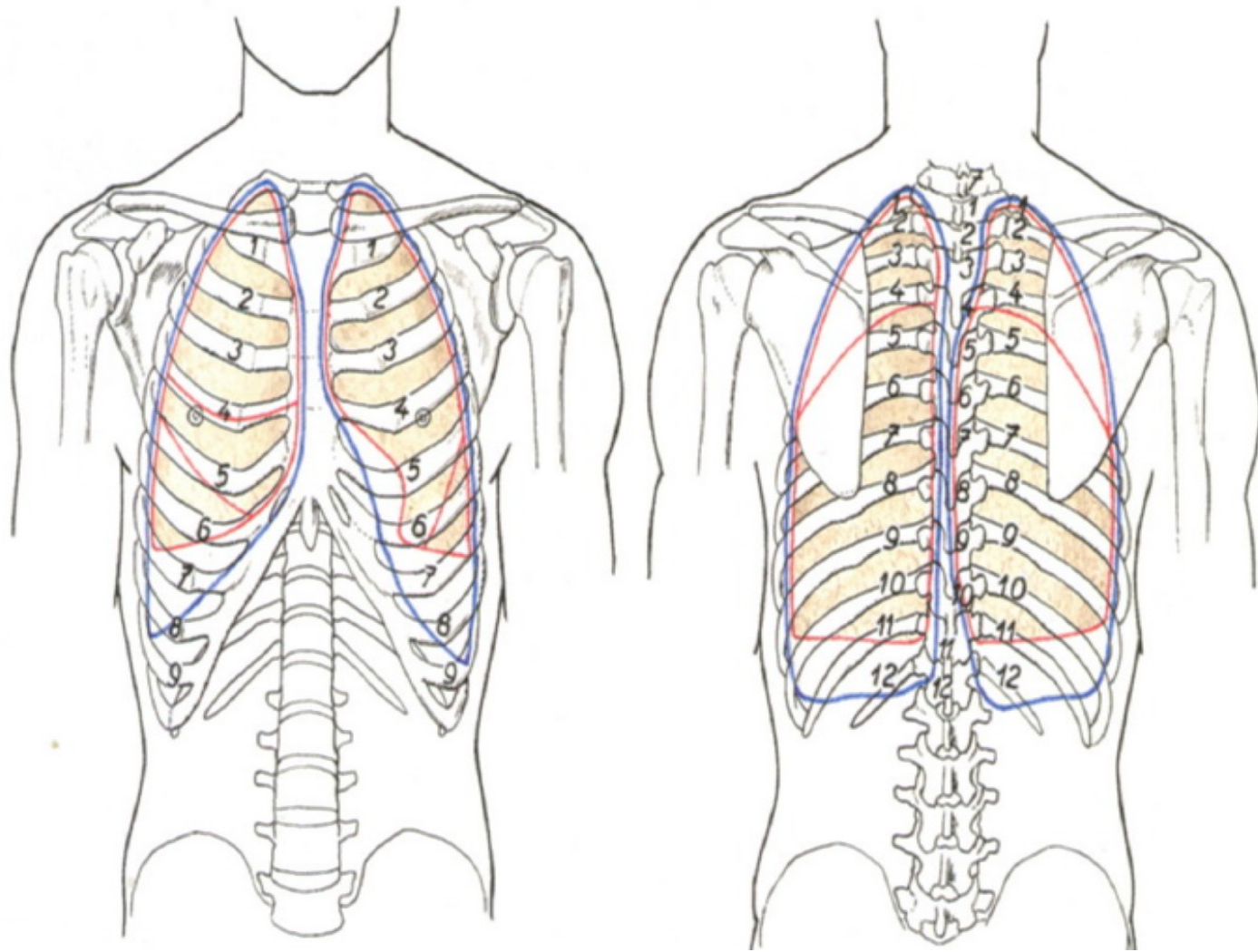
breathing in



breathing out



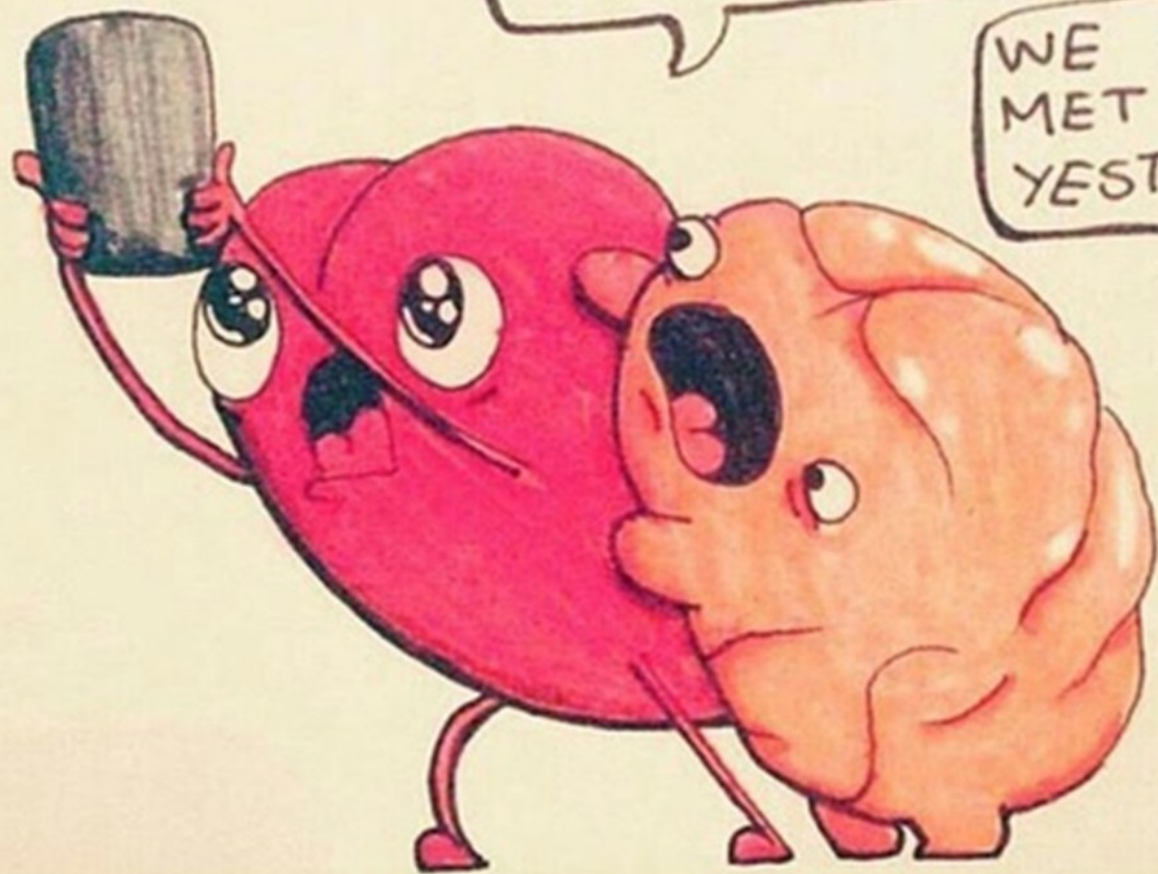
Pleura: popis rozdělení, recessus, přechod parietální a viscerální pleury



DON'T PRESS SEND!

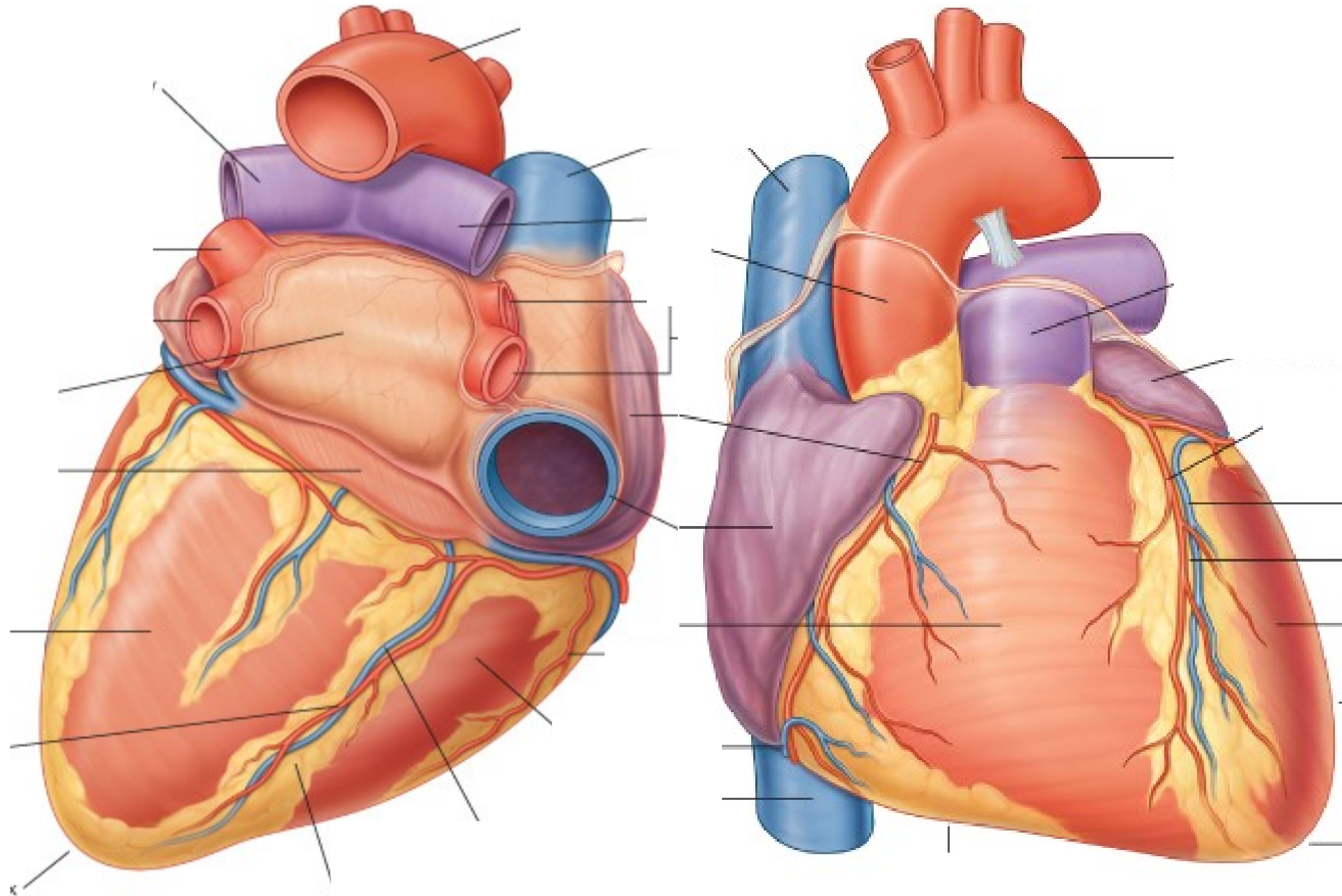
BUT WE'RE
IN LOVE!

WE ONLY
MET HIM
YESTERDAY

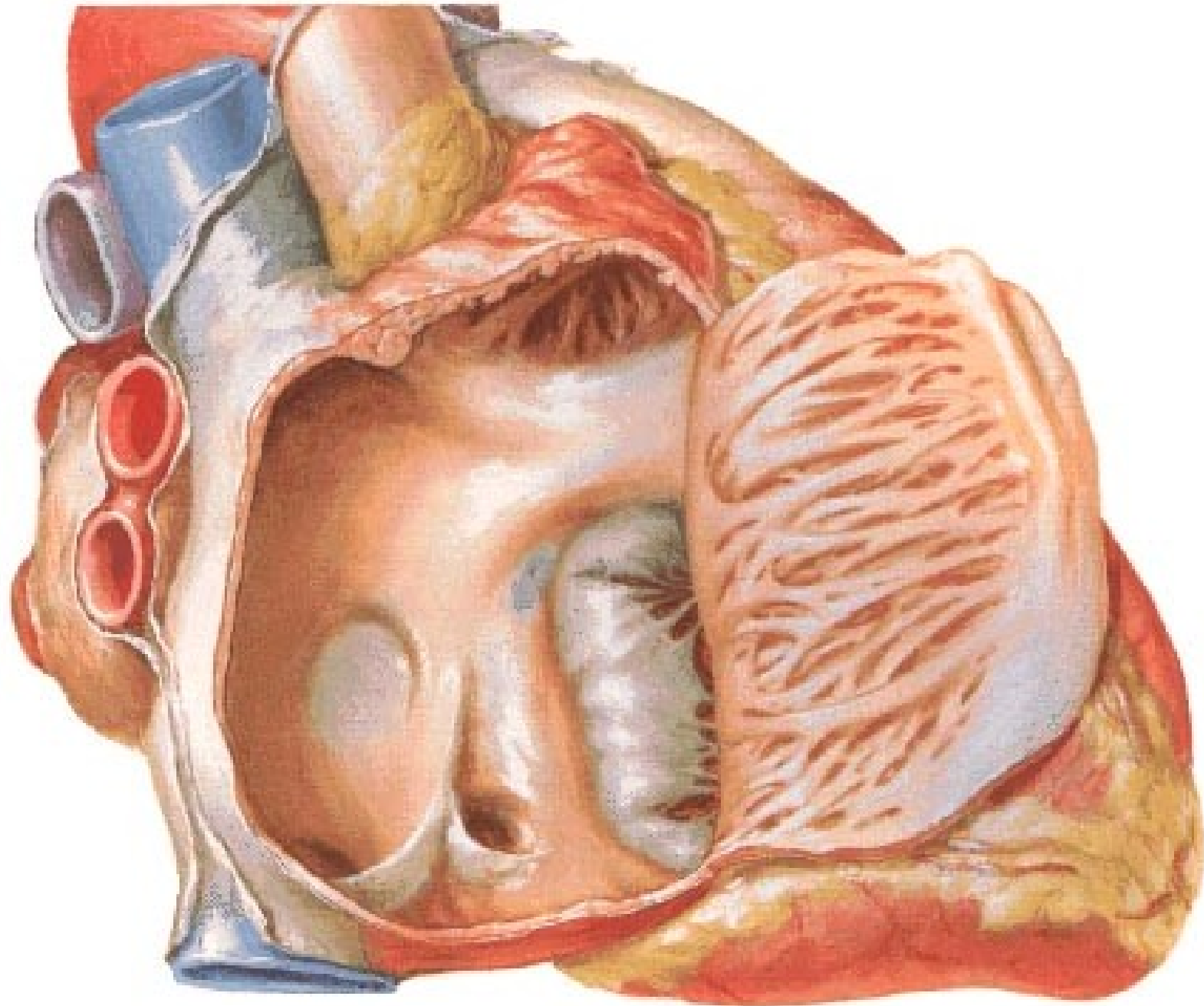


thine

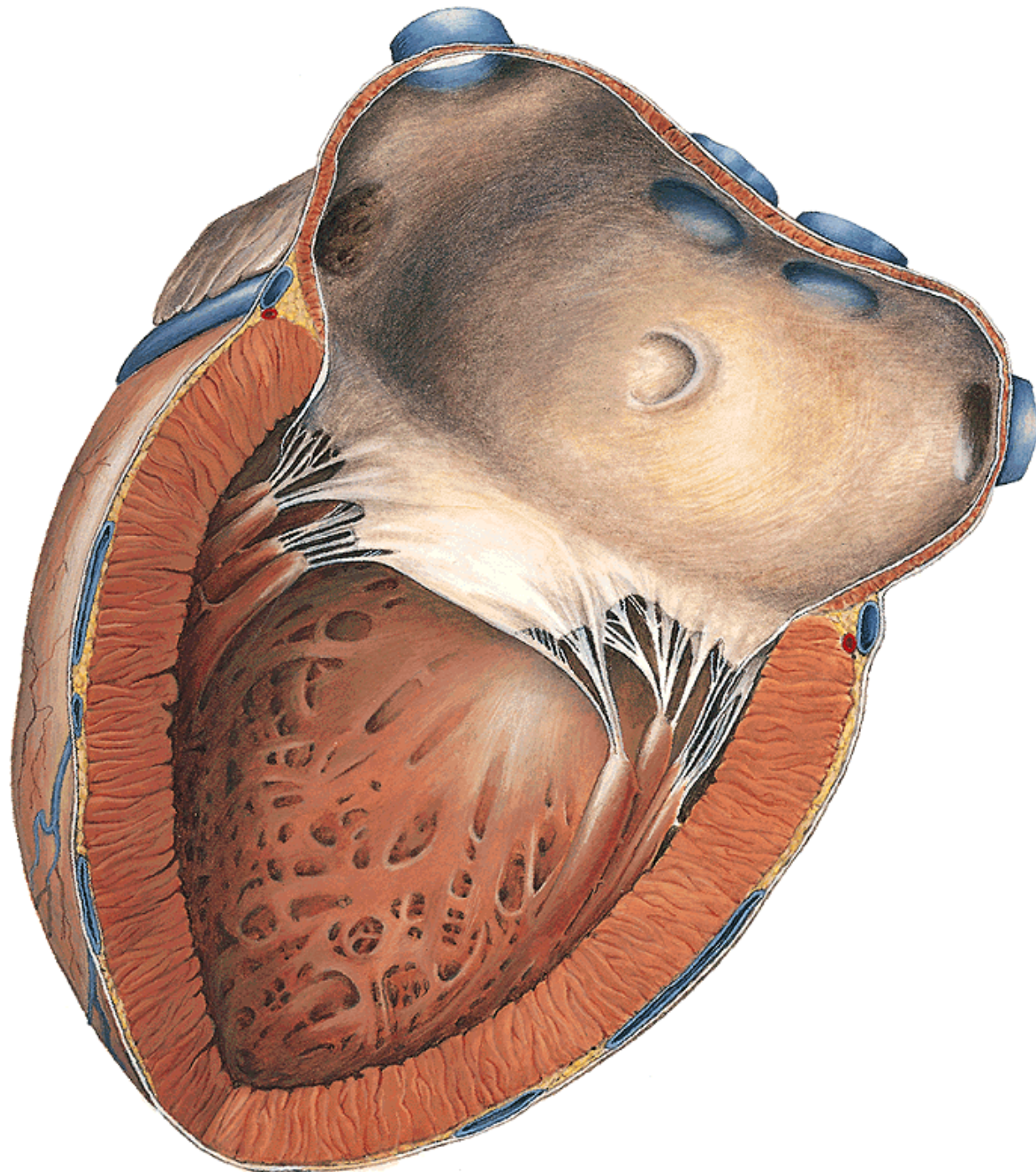
Celkový popis srdce, zevní tvar, syntopie



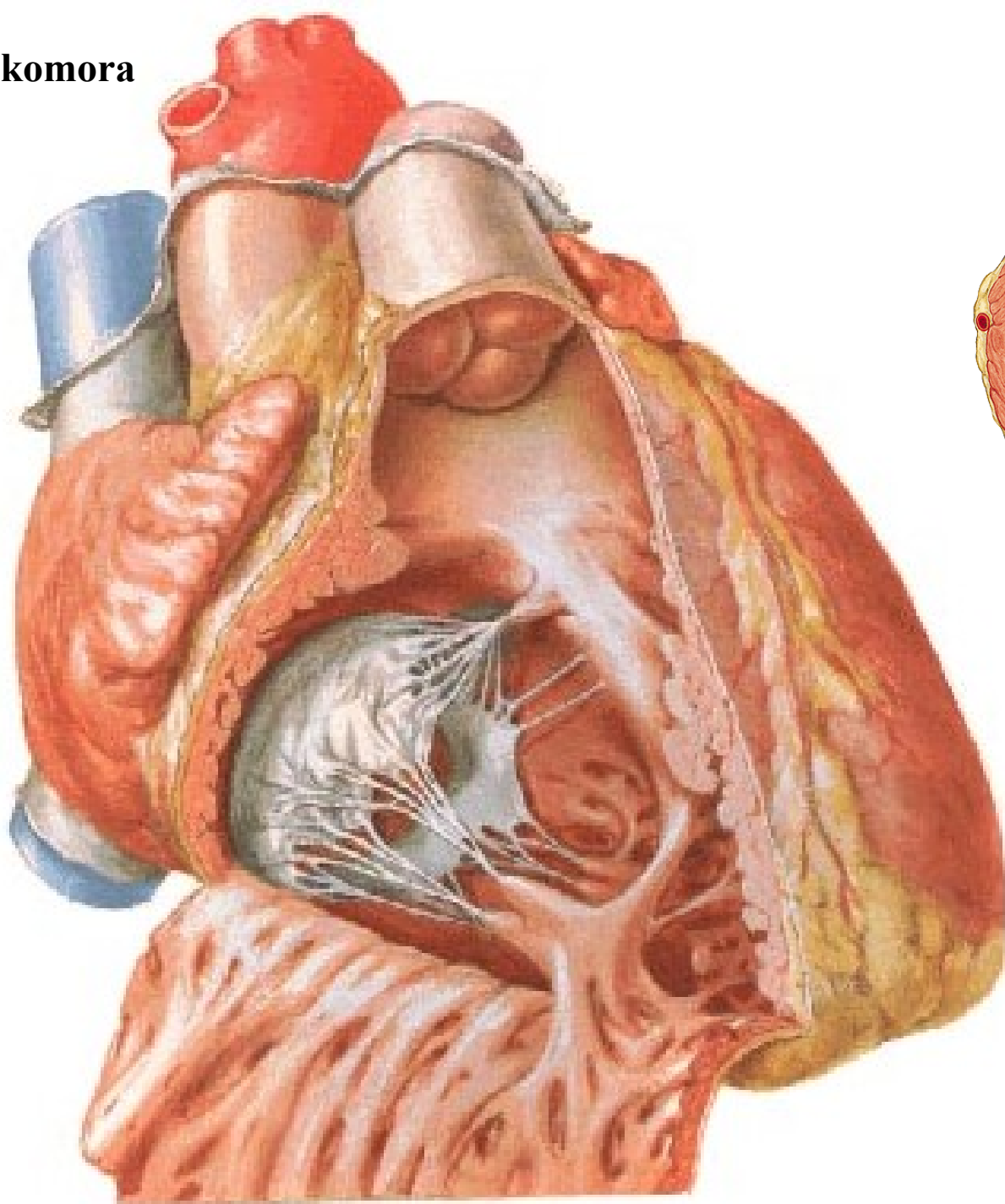
Pravá srdeční síň



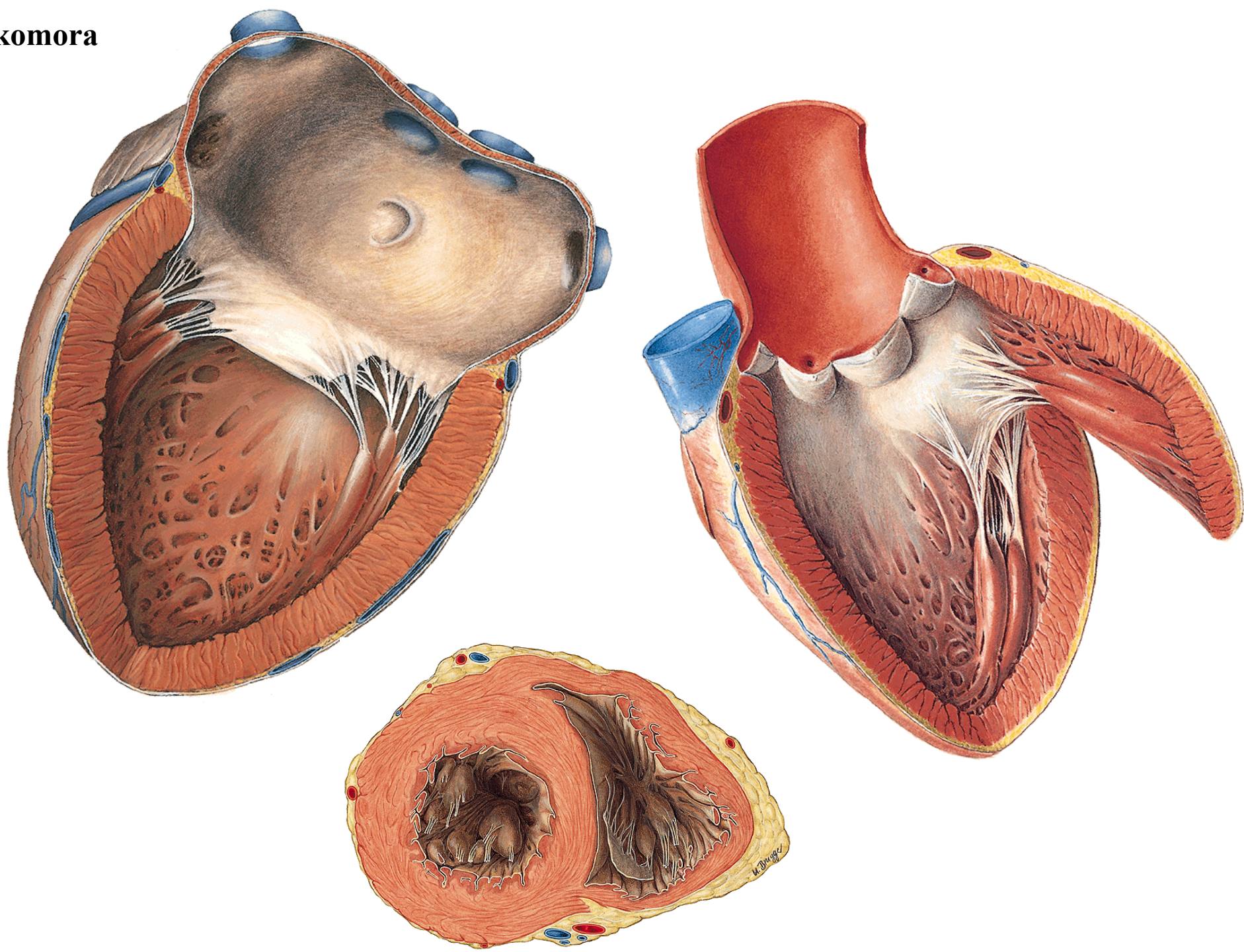
Levá srdeční síň

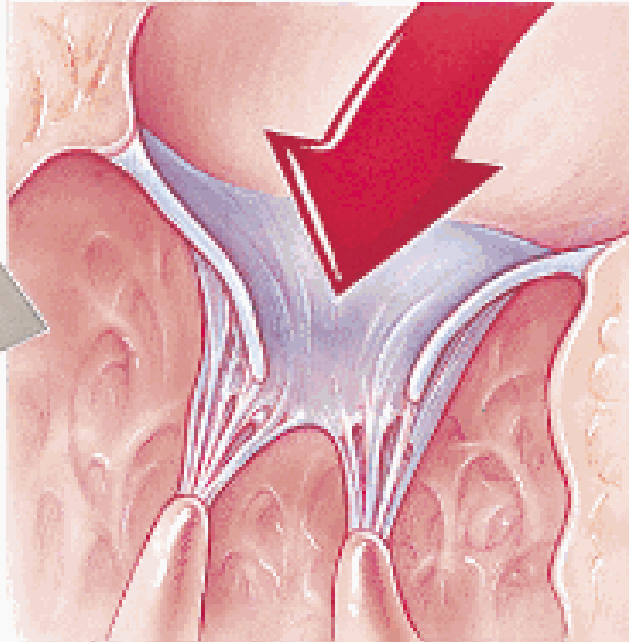


Pravá srdeční komora



Levá srdeční komora

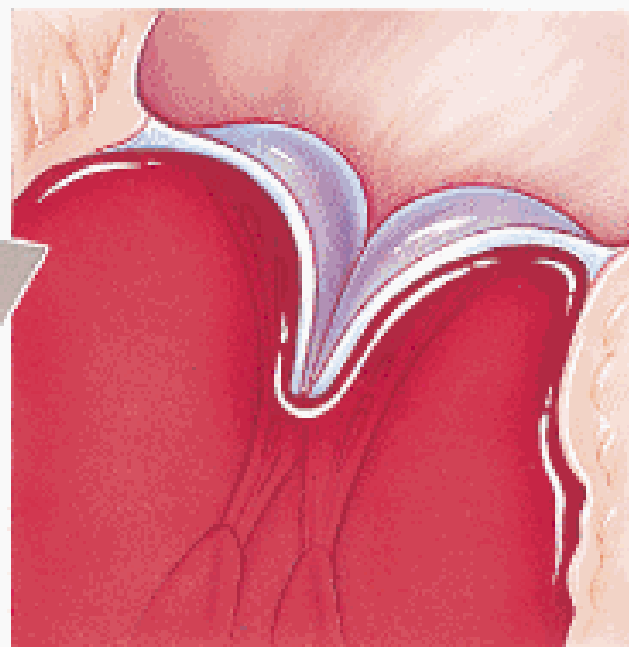




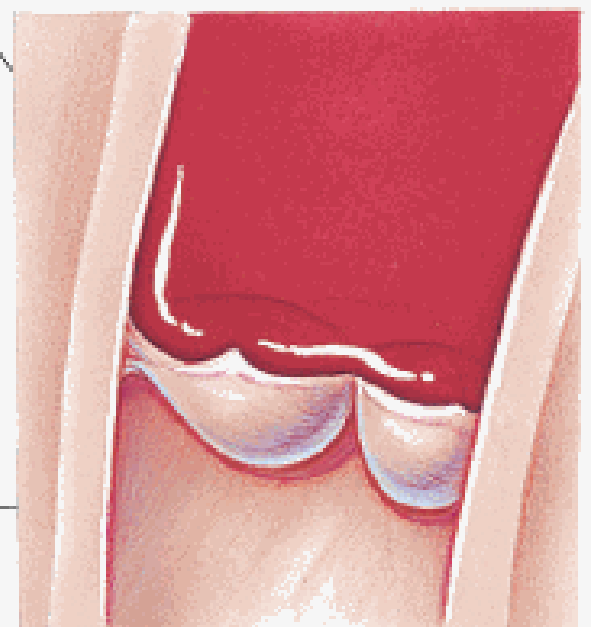
Atrioventricular valve open



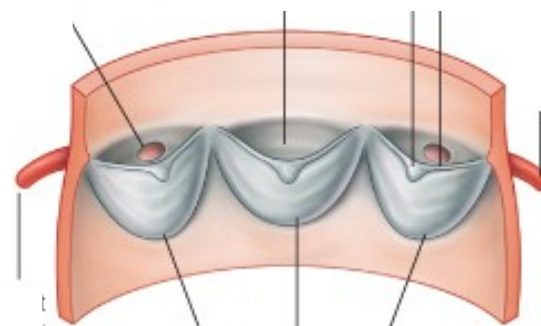
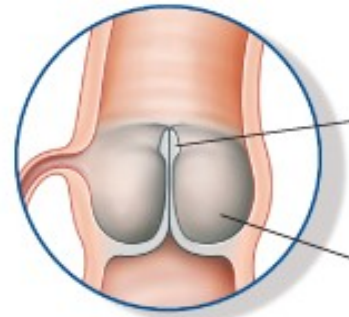
Semilunar valve open



Atrioventricular valve closed

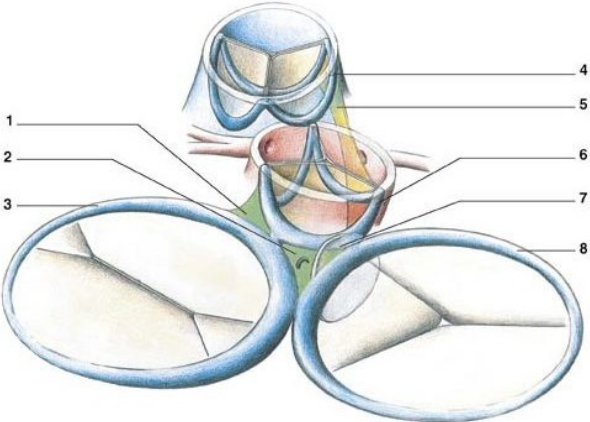


Semilunar valve closed

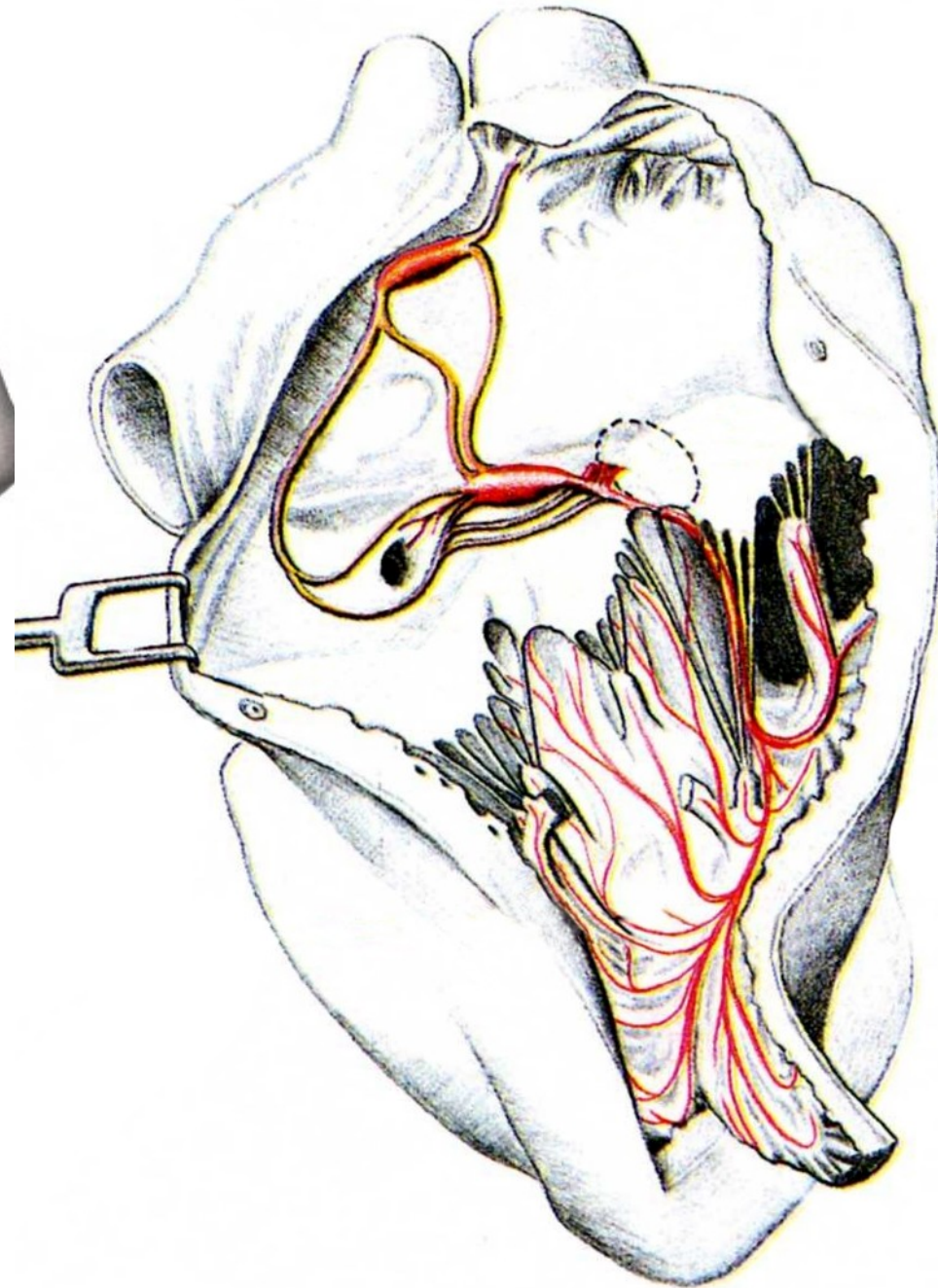
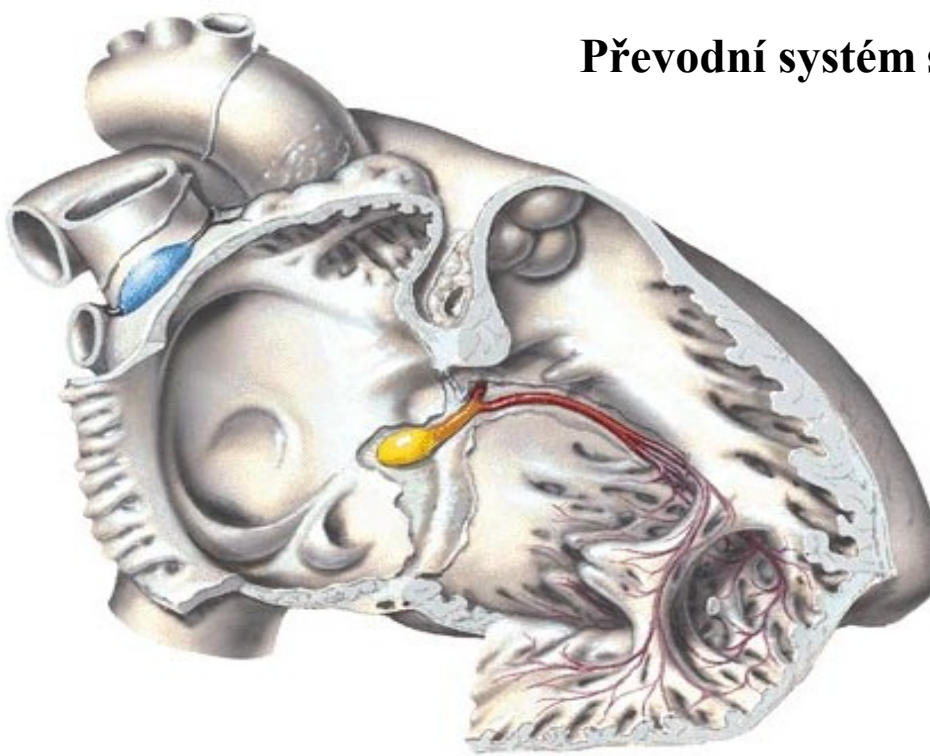


Srdeční chlopně

Stavba srdce, skelet srdeční

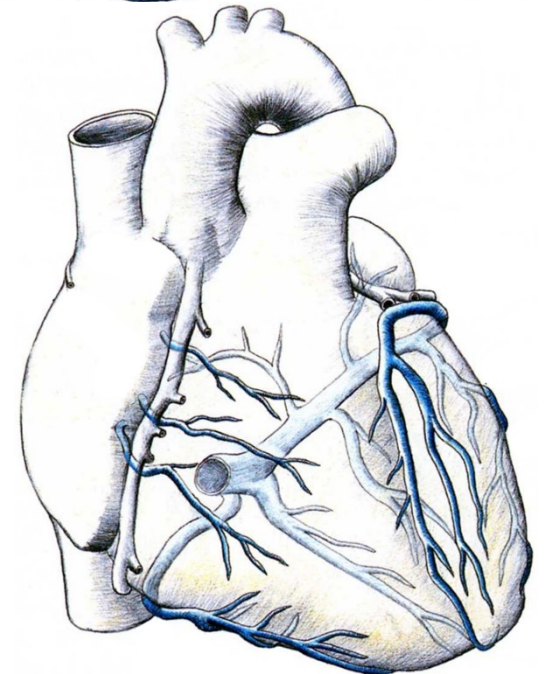
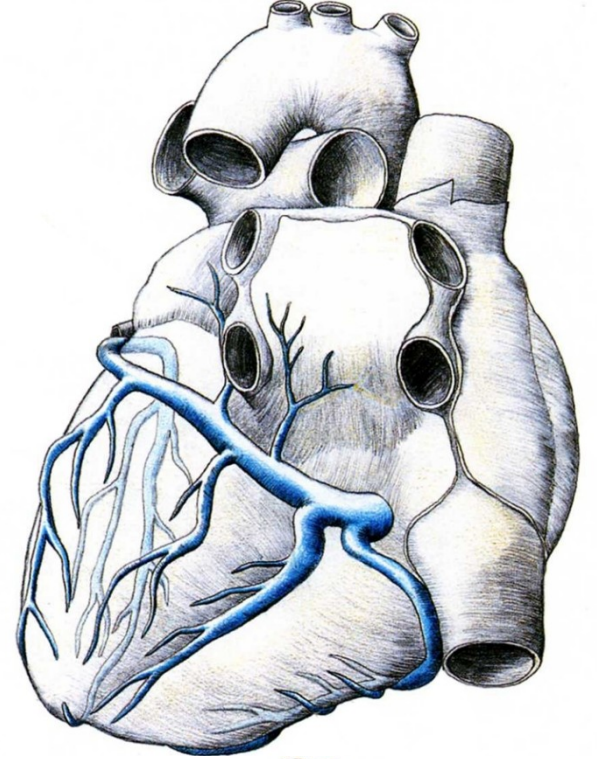
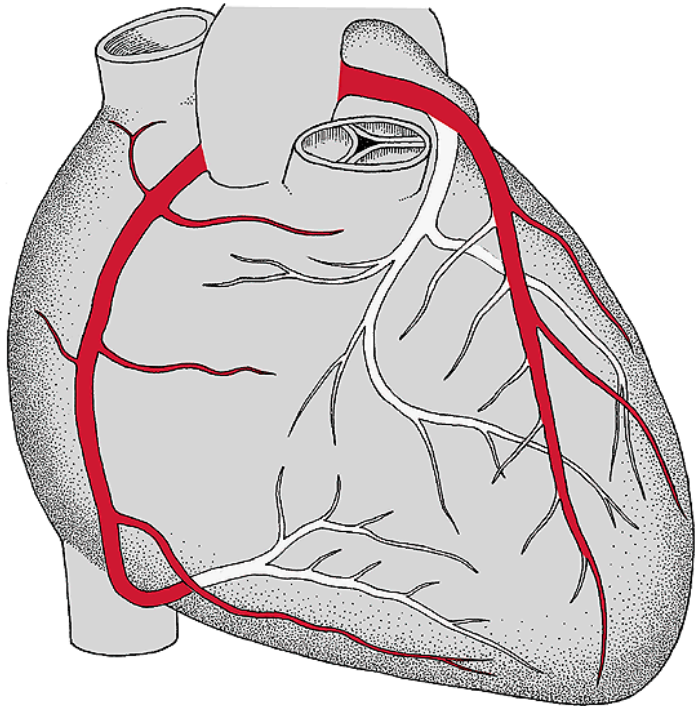
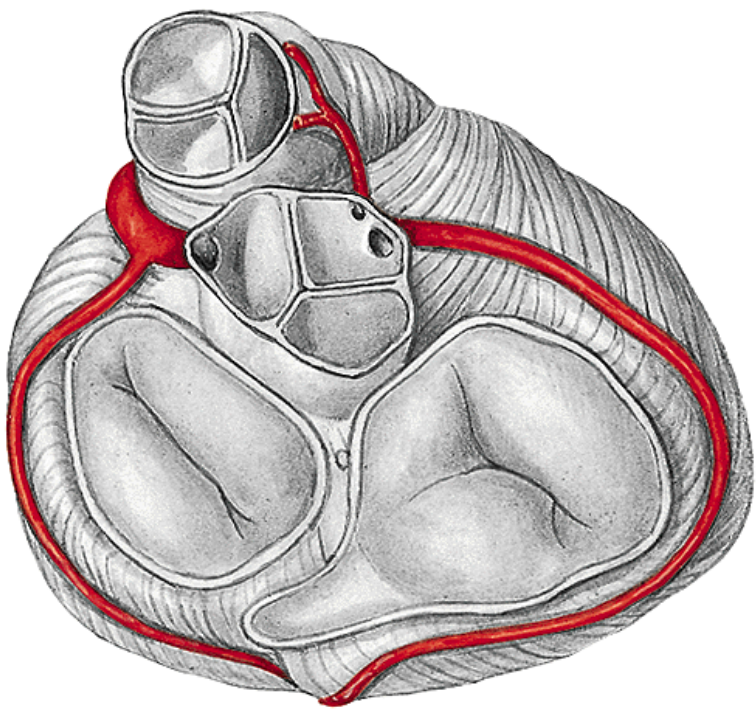


Převodní systém srdeční

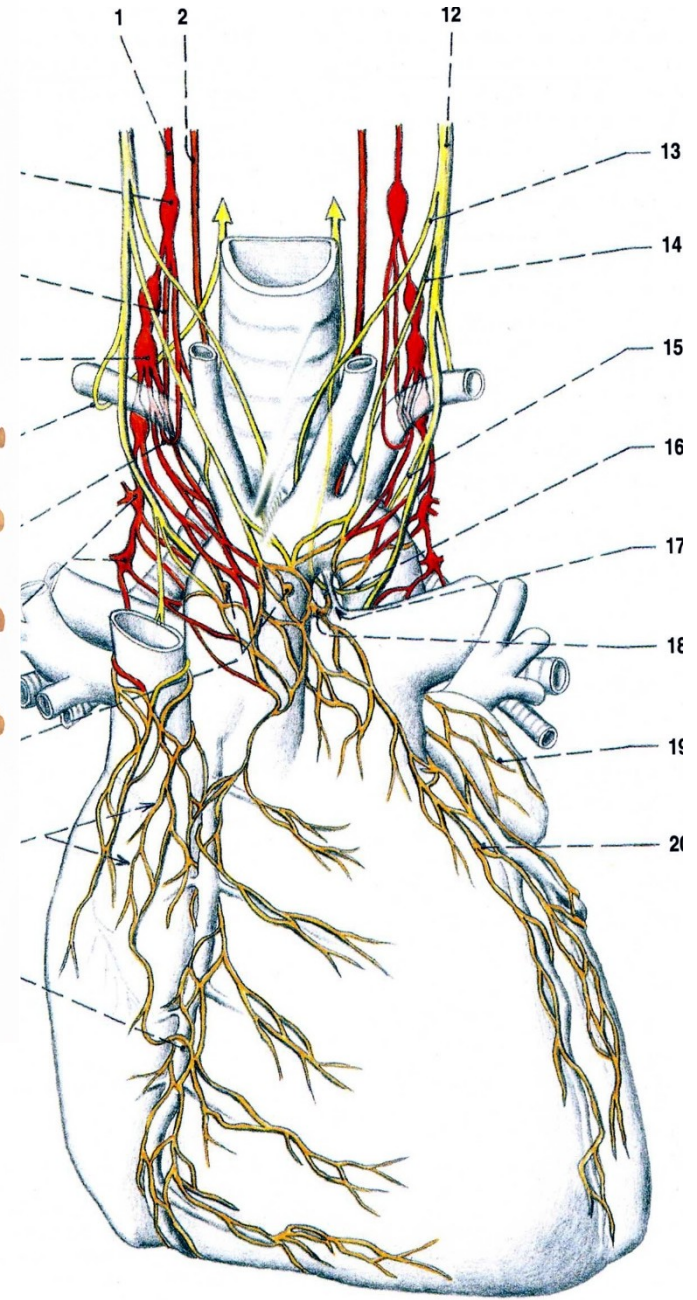
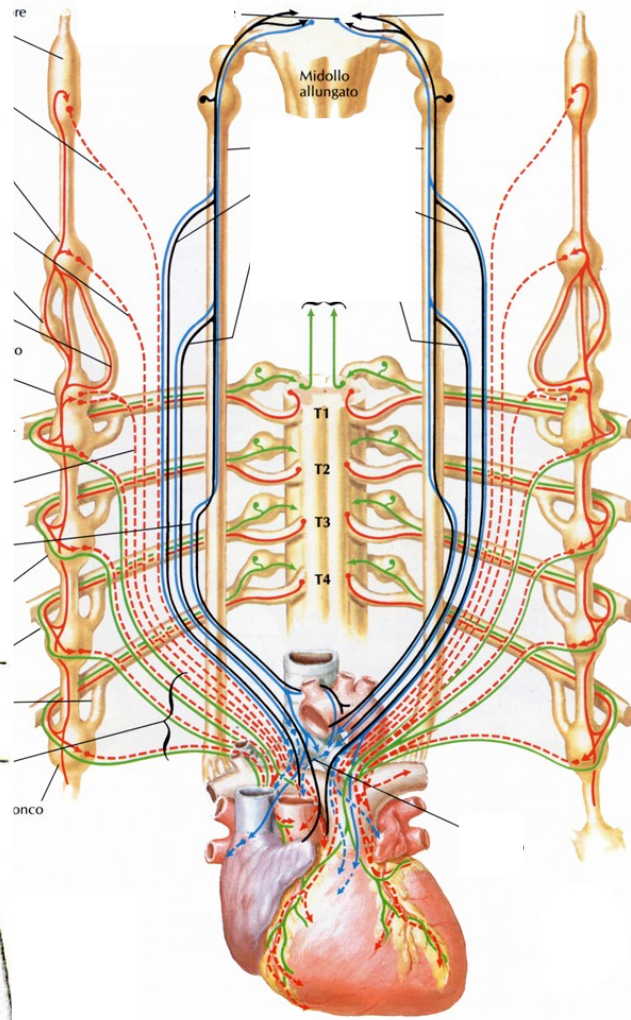
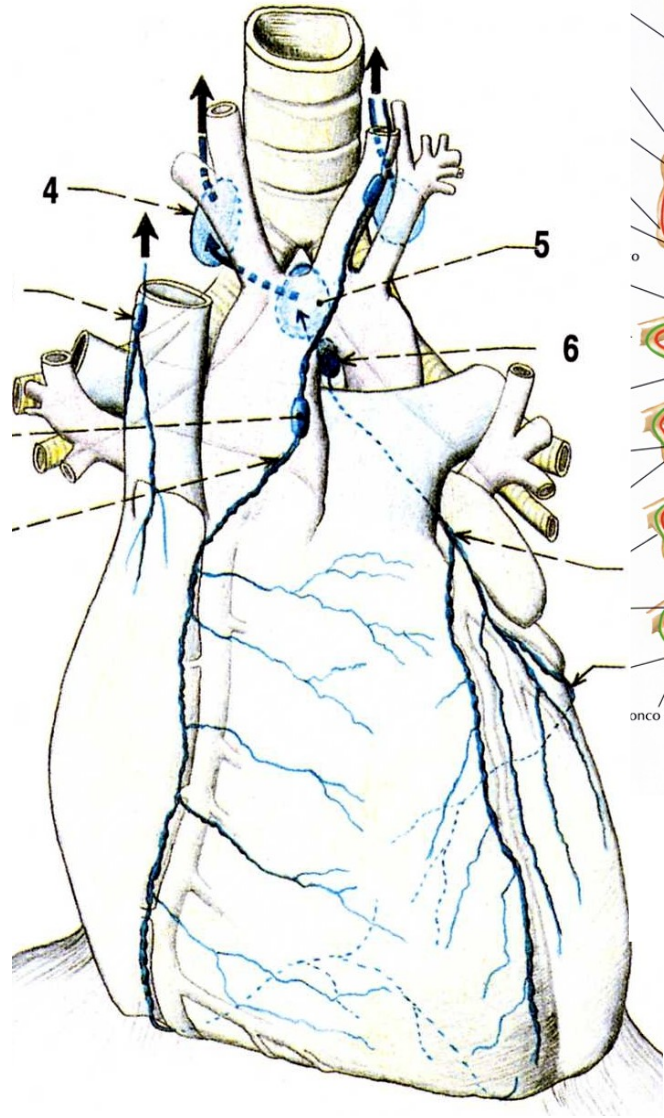


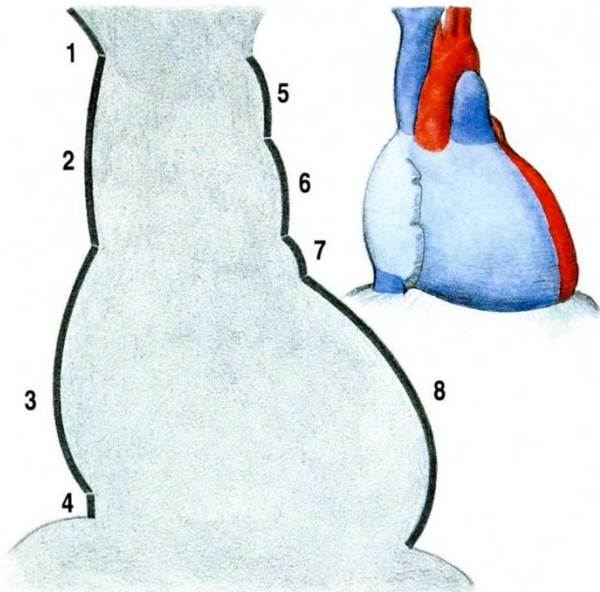
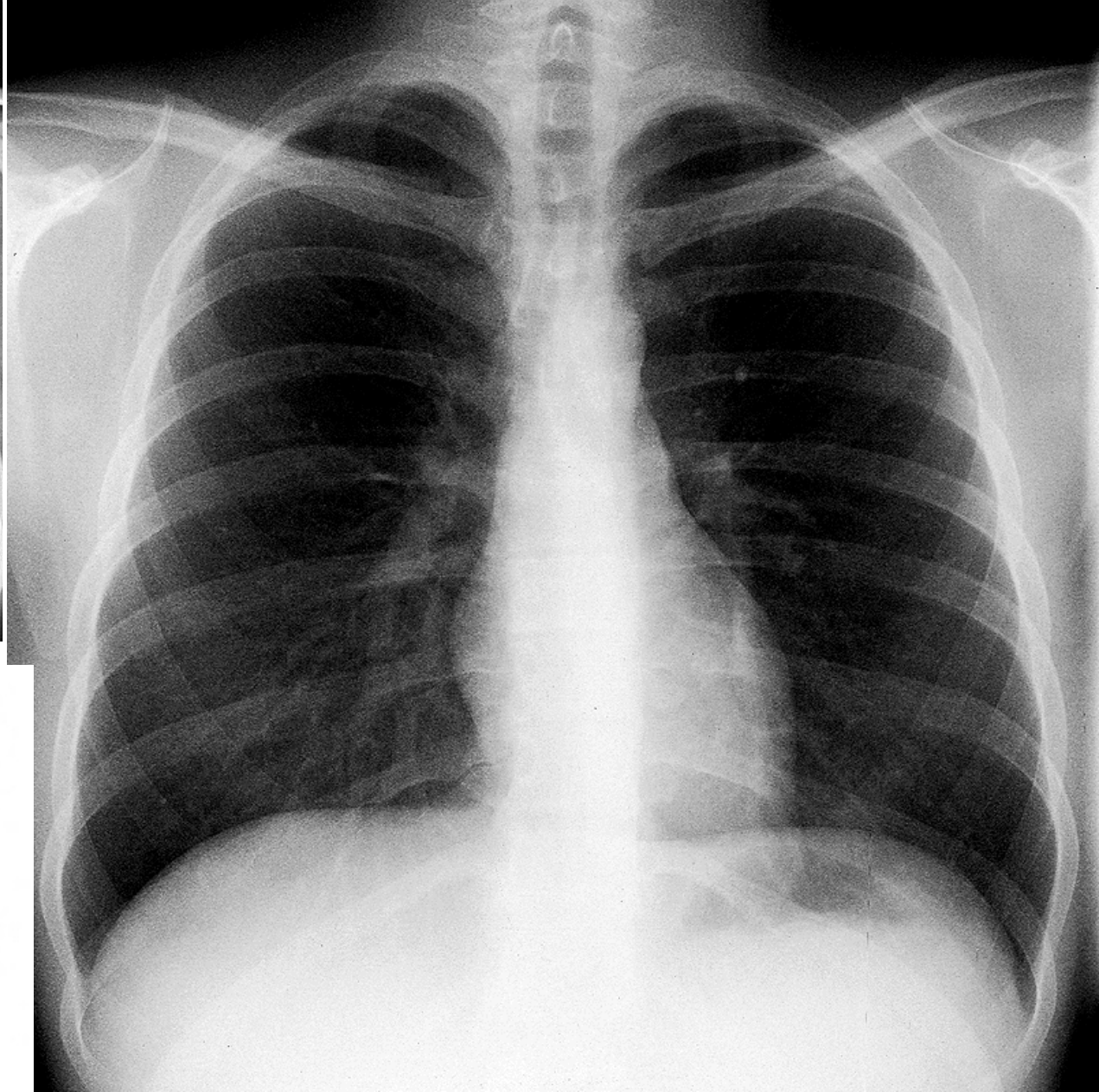
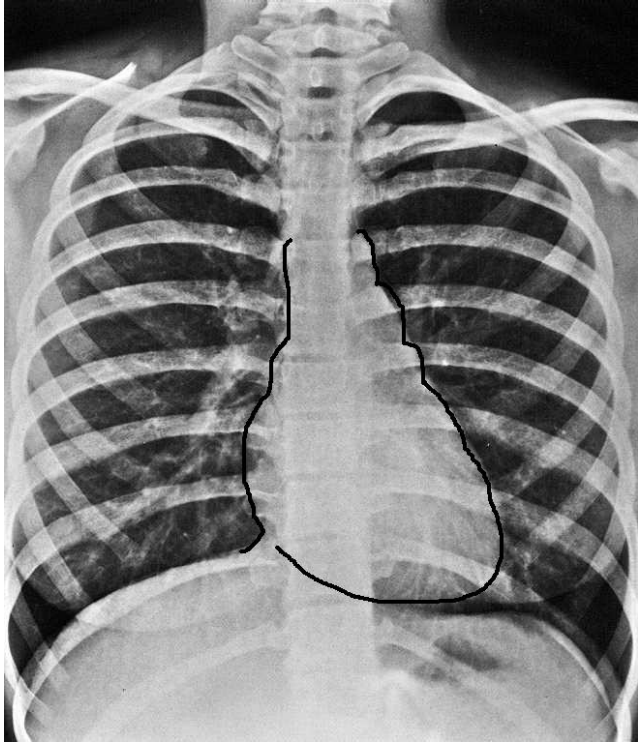
Věčité tepny

Žíly srdce

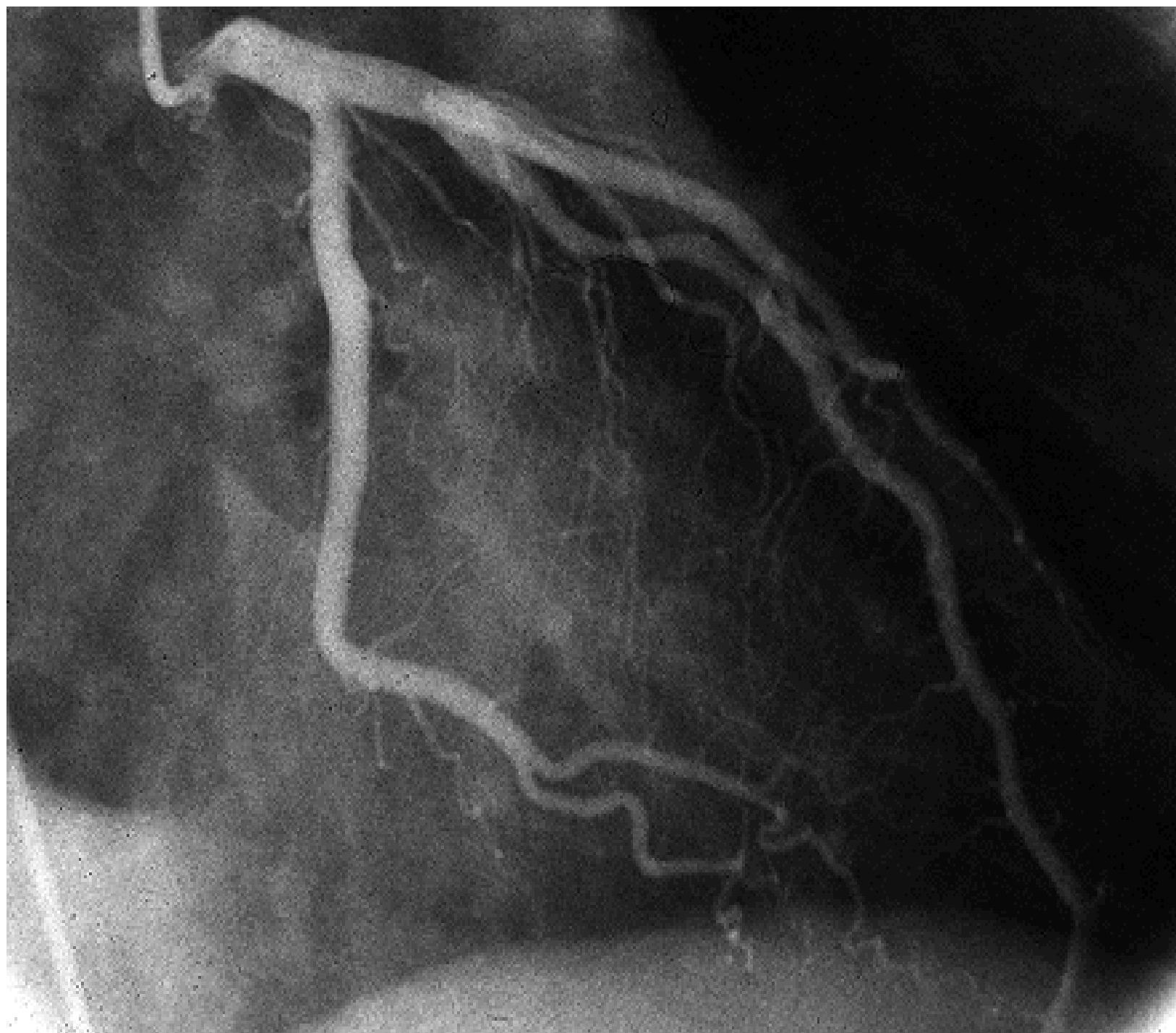


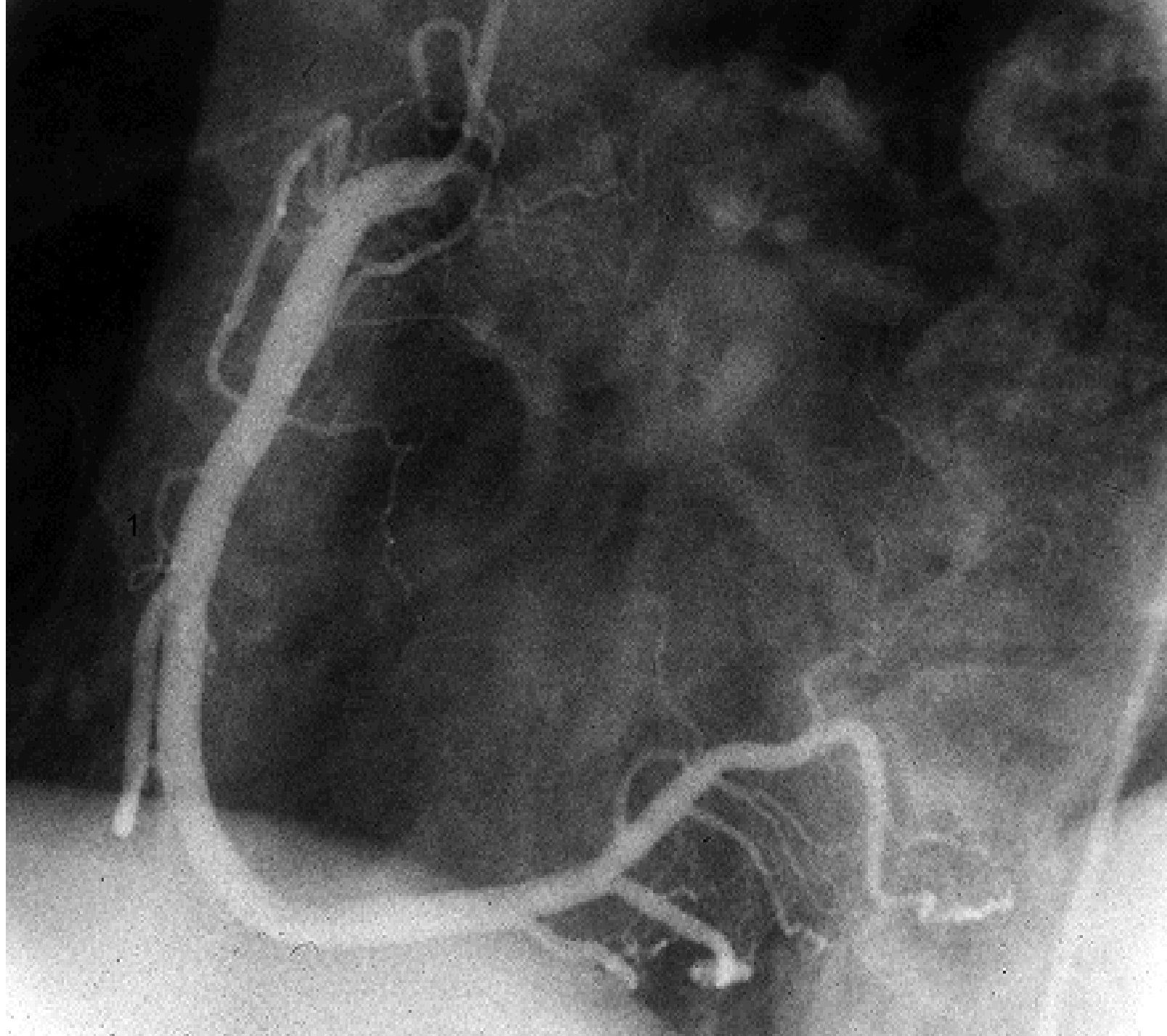
Inervace srdce





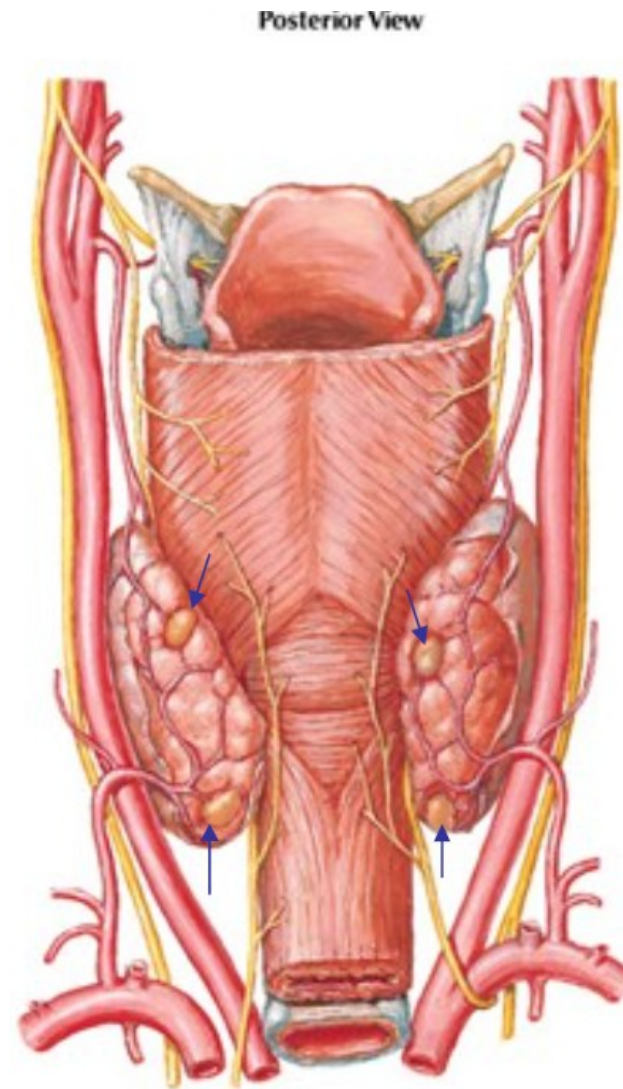
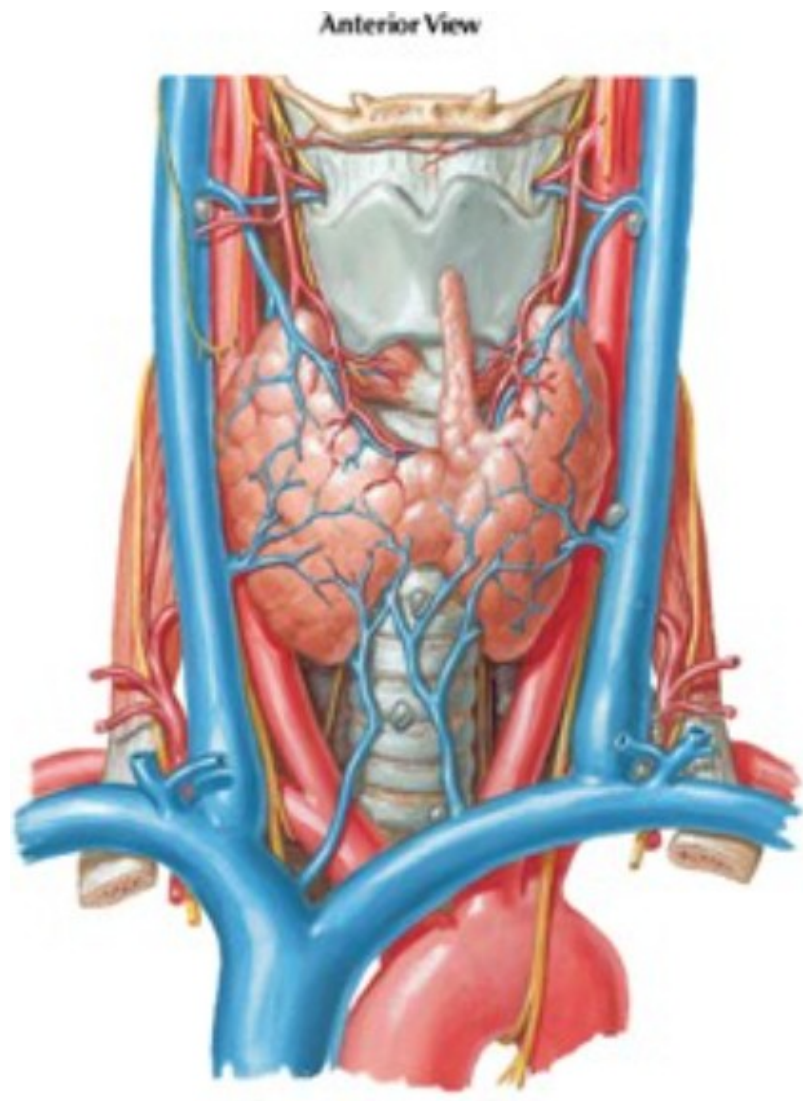
X-ray picture: posteroanterior projection





Glandula thyroidea (syntopie, cévní zásobení)

Glandulae parathyroideae (syntopie, cévní zásobení)



Cavitas nasi ossea – laterální stěna

Cavitas nasi ossea – septum nasi, strop a spodina

Cavitas nasi ossea – meatus nasi Platysma (platysma), sternocleidomastoid muscle (m. sternocleidomastoideus), neck fascia (fascia cervicalis)

Platysma, m. sternocleidomastoideus, krční fascie

Mm. suprahyoidei

Mm. infrahyoidei

Mm. scaleni et mm. praevertebrales

Mm. thoracis – povrchová vrstva (thorakohumerální svaly)

Mm. thoracis – hluboké (vlastní) svaly hrudníku

Diaphragma

Stavba stěny hrudní

Reg. mammalis

Orientační čáry na hrudníku

Perikard

Mediastinum superius

Mediastinum posterius

Mediastinum anterius et medium