

**CEREBELLUM  
DIENCEPHALON**

14. Mozeček, zevní popis, princip strukturálního uspořádání

15. Mozeček, základní spoje a jejich funkce

16. Diencefalon, zevní popis

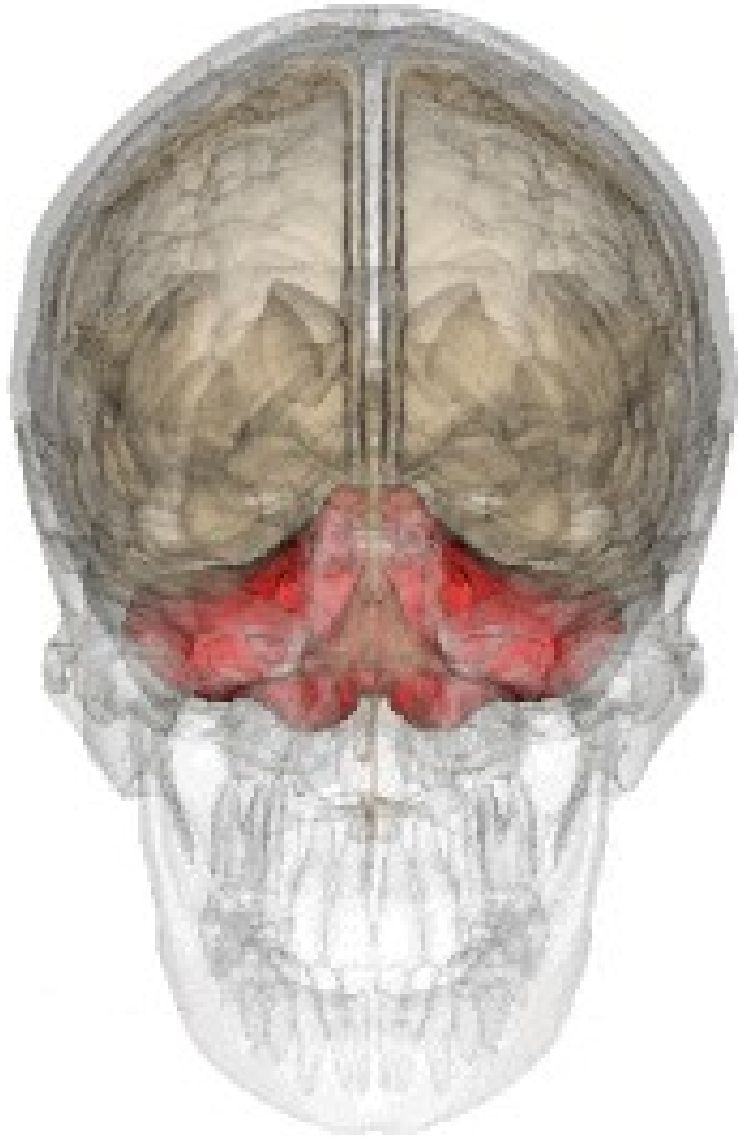
17. Thalamus, hlavní jádra podle jejich strukturálně-funkční klasifikace

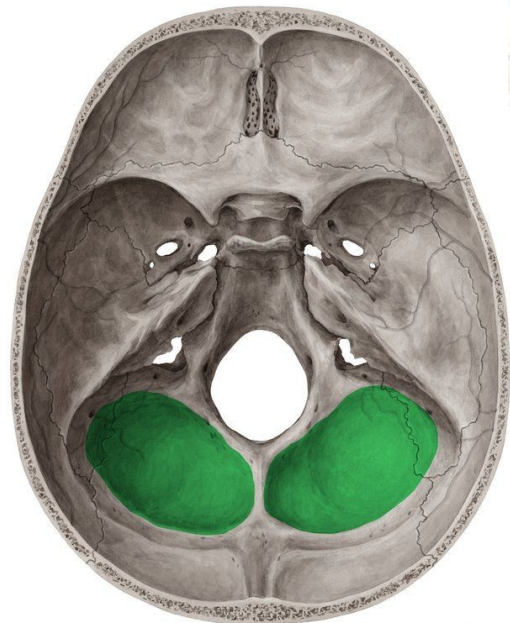
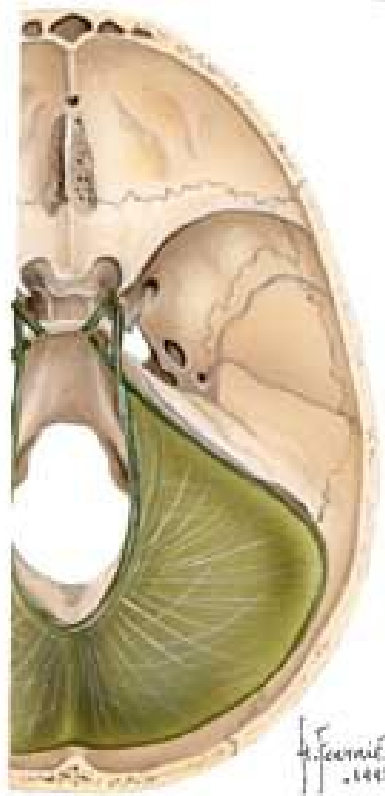
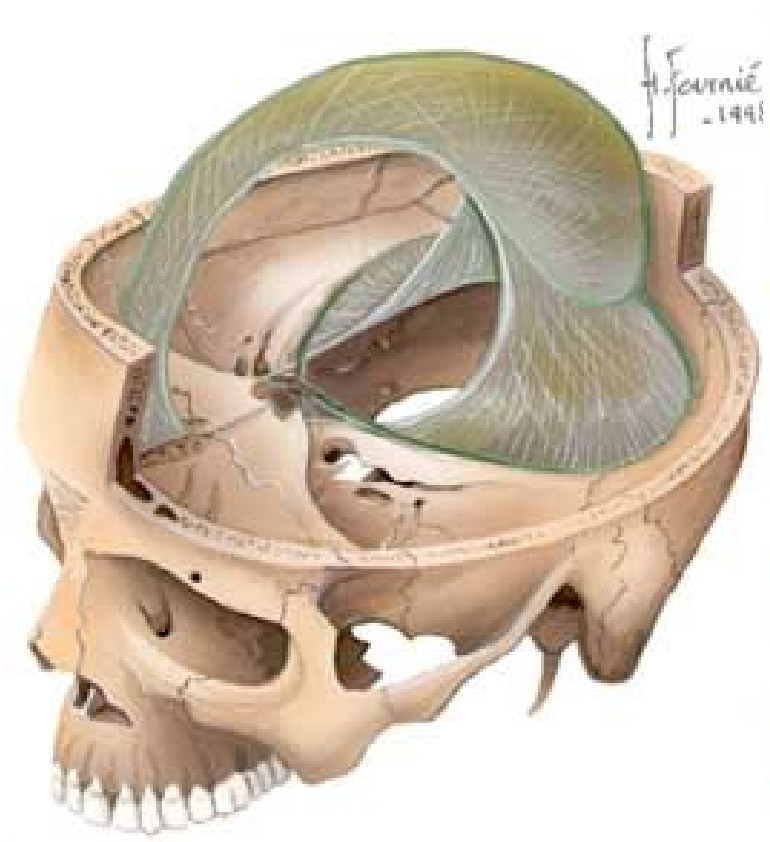
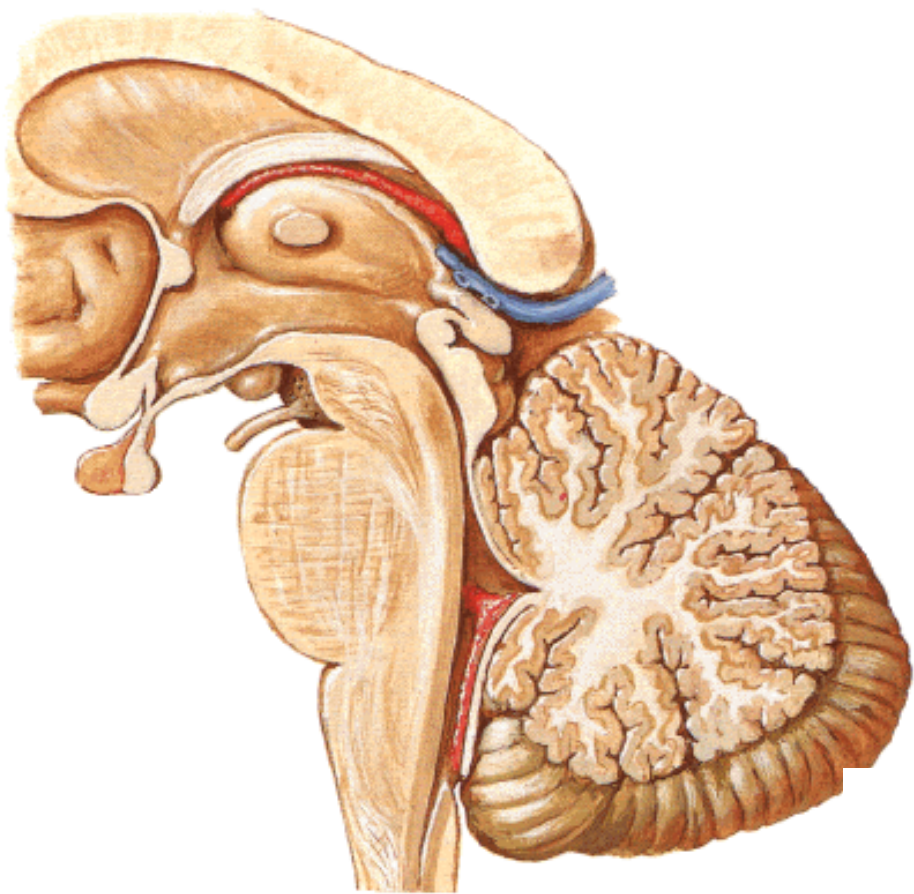
18. Hypothalamus, základní dělení jader a jejich funkce

19. Sekretorický aparát diencefala – základní princip, tractus hypothalamo-hypophysialis

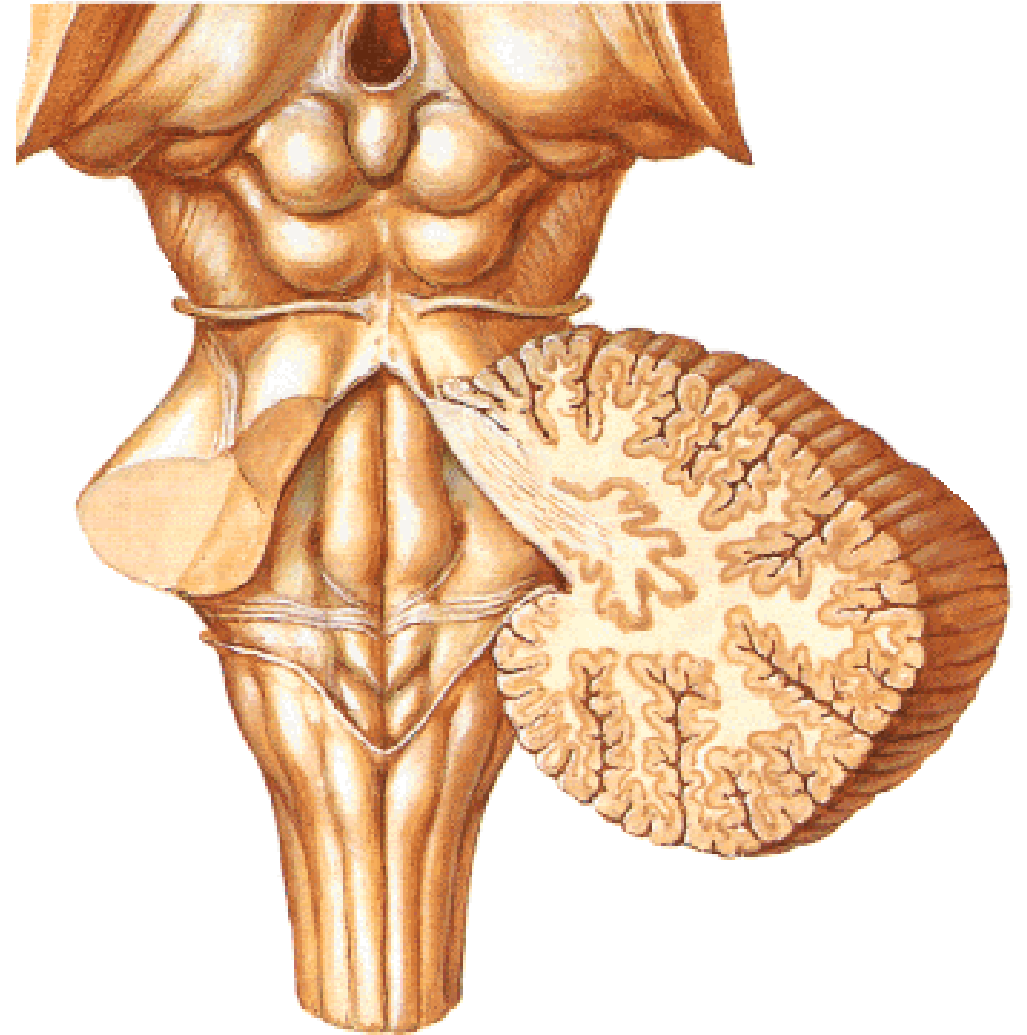
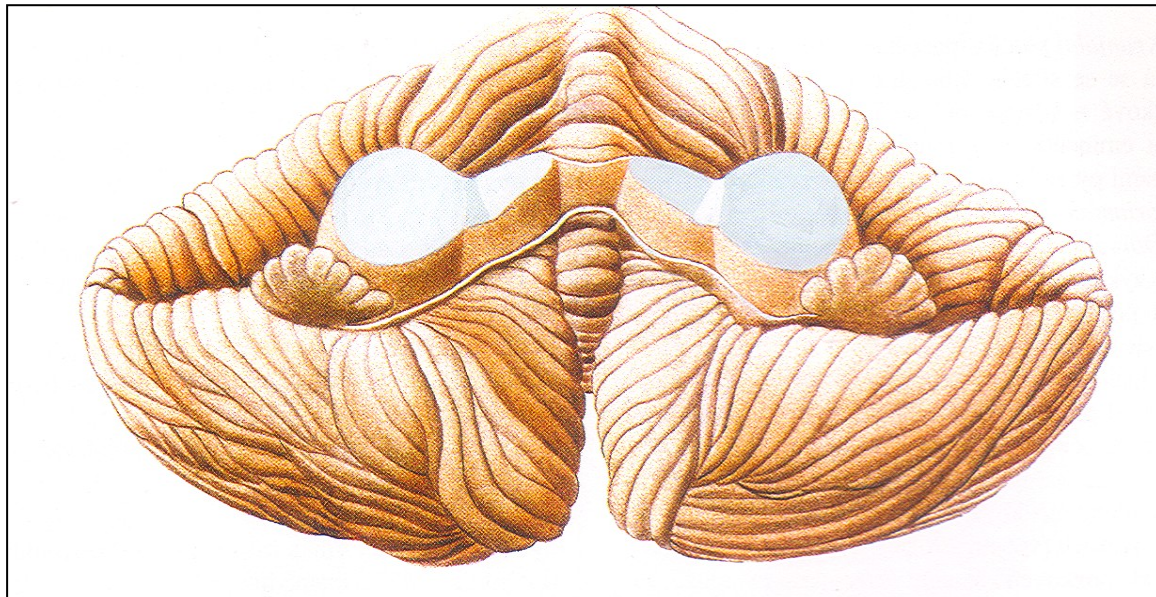
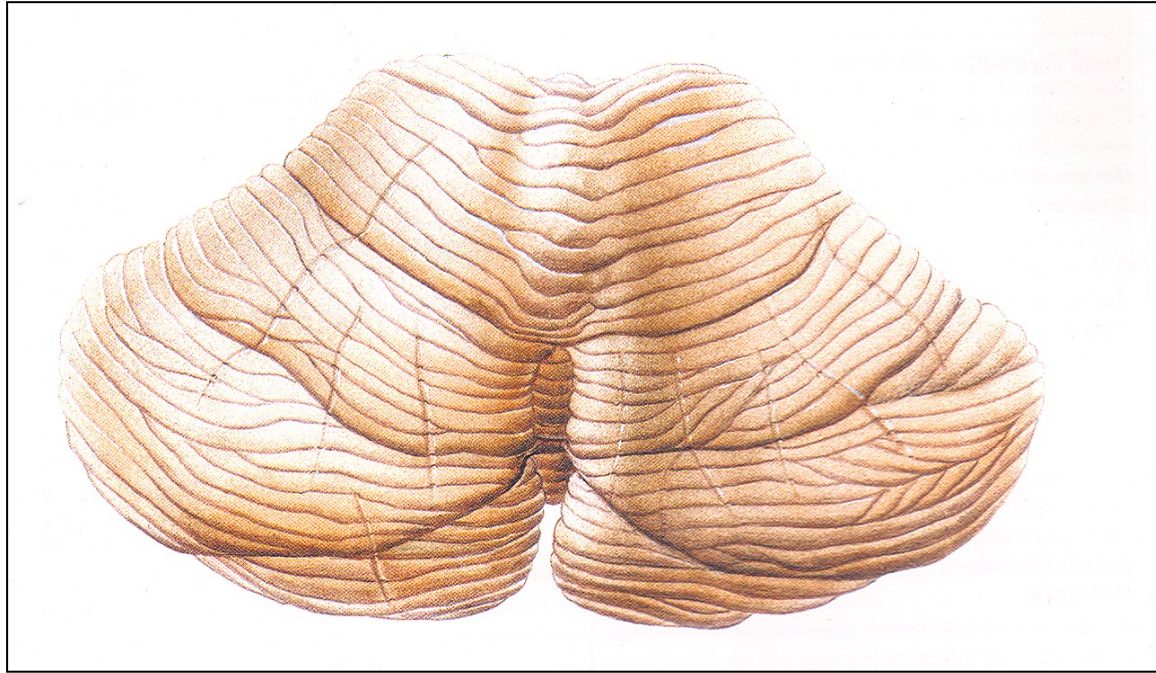
20. Sekretorický aparát diencefala – hypofyzální portální systém

# Cerebellum

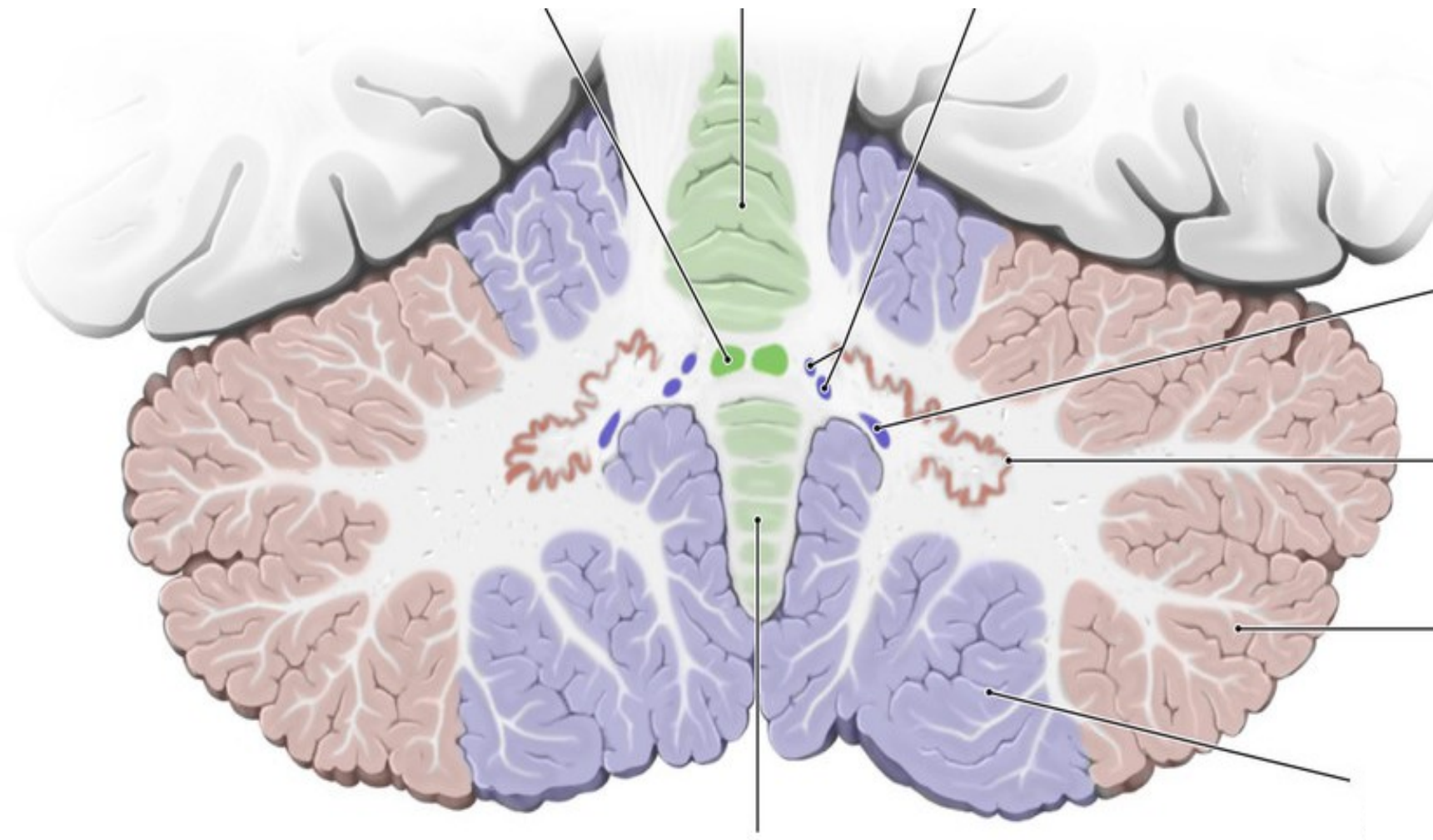




# Anatomické členění:



# Vnitřní struktura mozečku

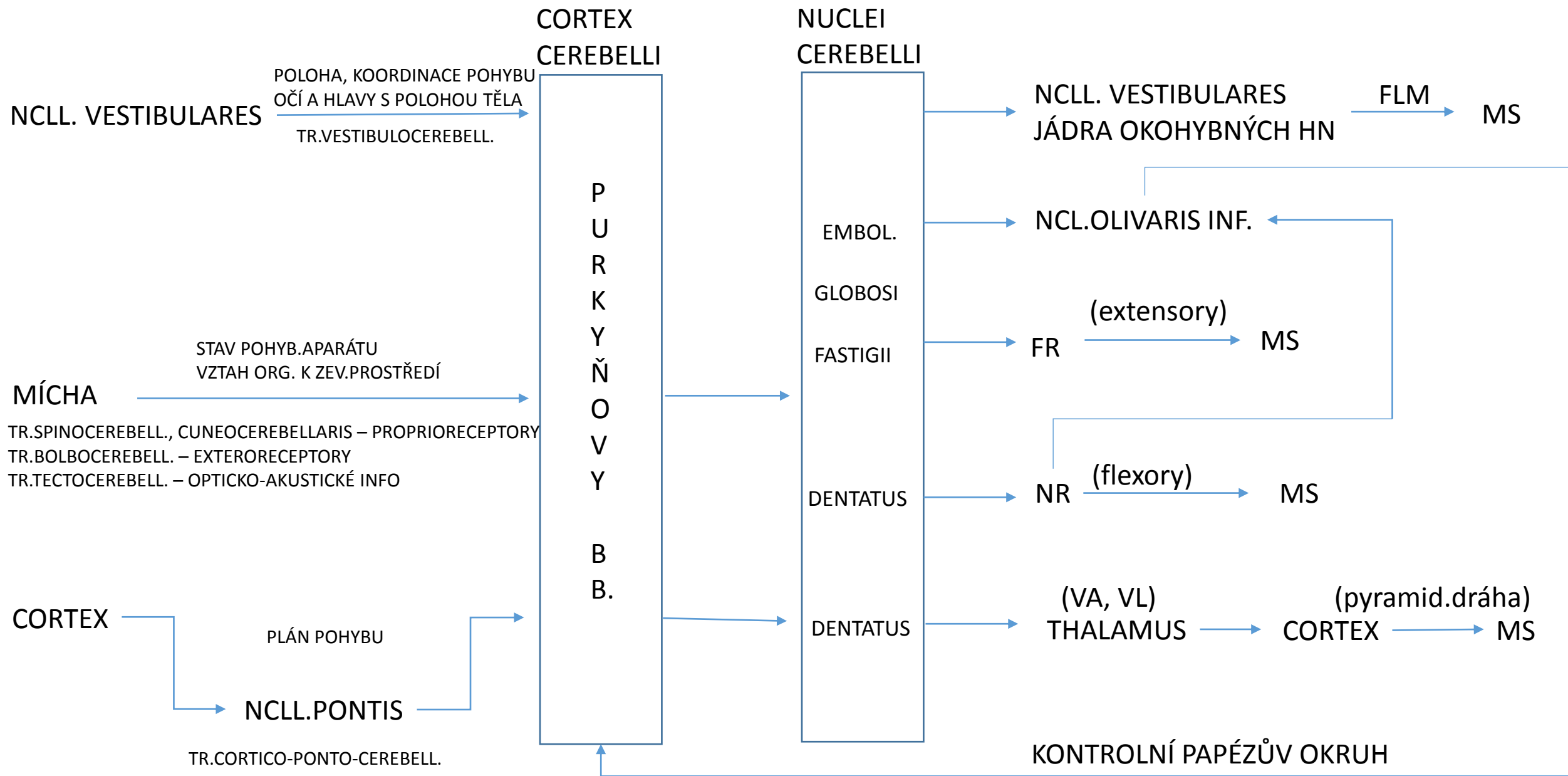


## Funkční členění:

phylogenetic	anatomical	connection	function
ARCHICEREBELLUM	VESTIBULOCEREBELLUM (flocculonodular lobe, lingula)	Vestibulární jádra	Držení těla, pohyby očí
PALEOCEREBELLUM	SPINOCEREBELLUM (anterior, posterior vermis closed cortex)	mícha	Svalové napětí, koordinace pohybů
NEOCEREBELLUM	PONTOCEREBELLUM (lateral cortex)	Cerebral cortex cestou ncll.pontis	Kontrola plánované motoriky, volných pohybů

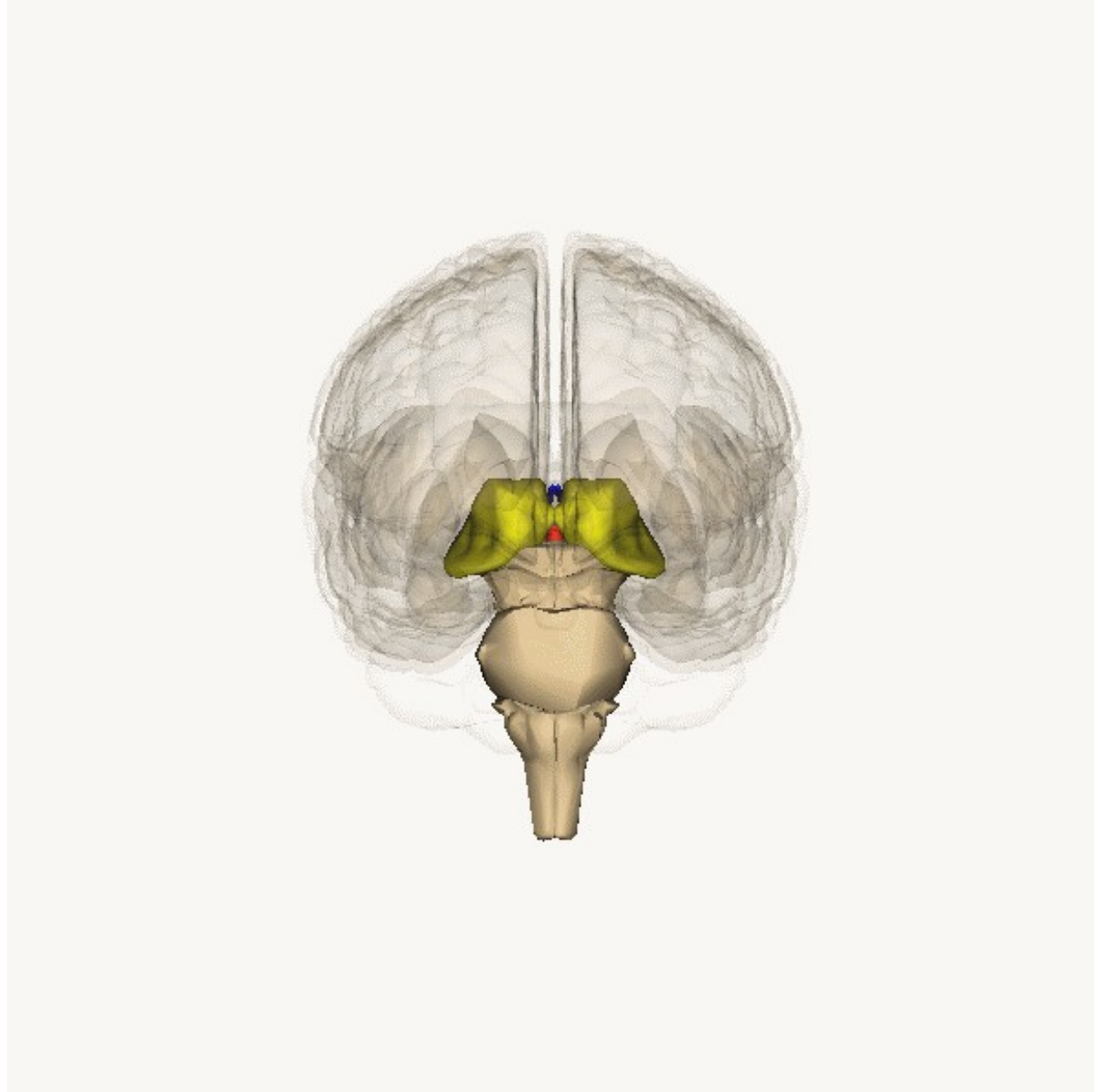
# AFFERENTY

# EFFERENTY

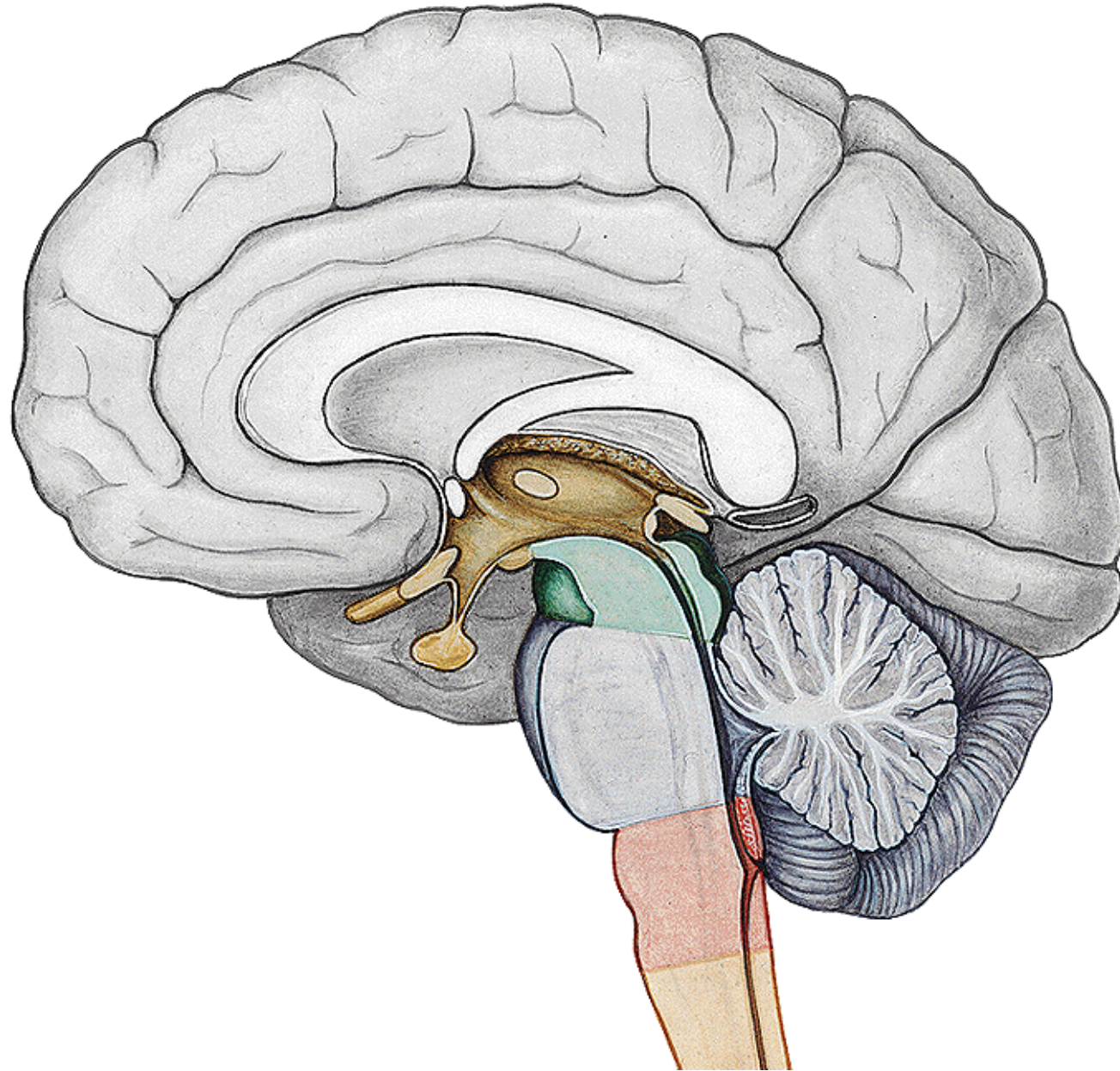




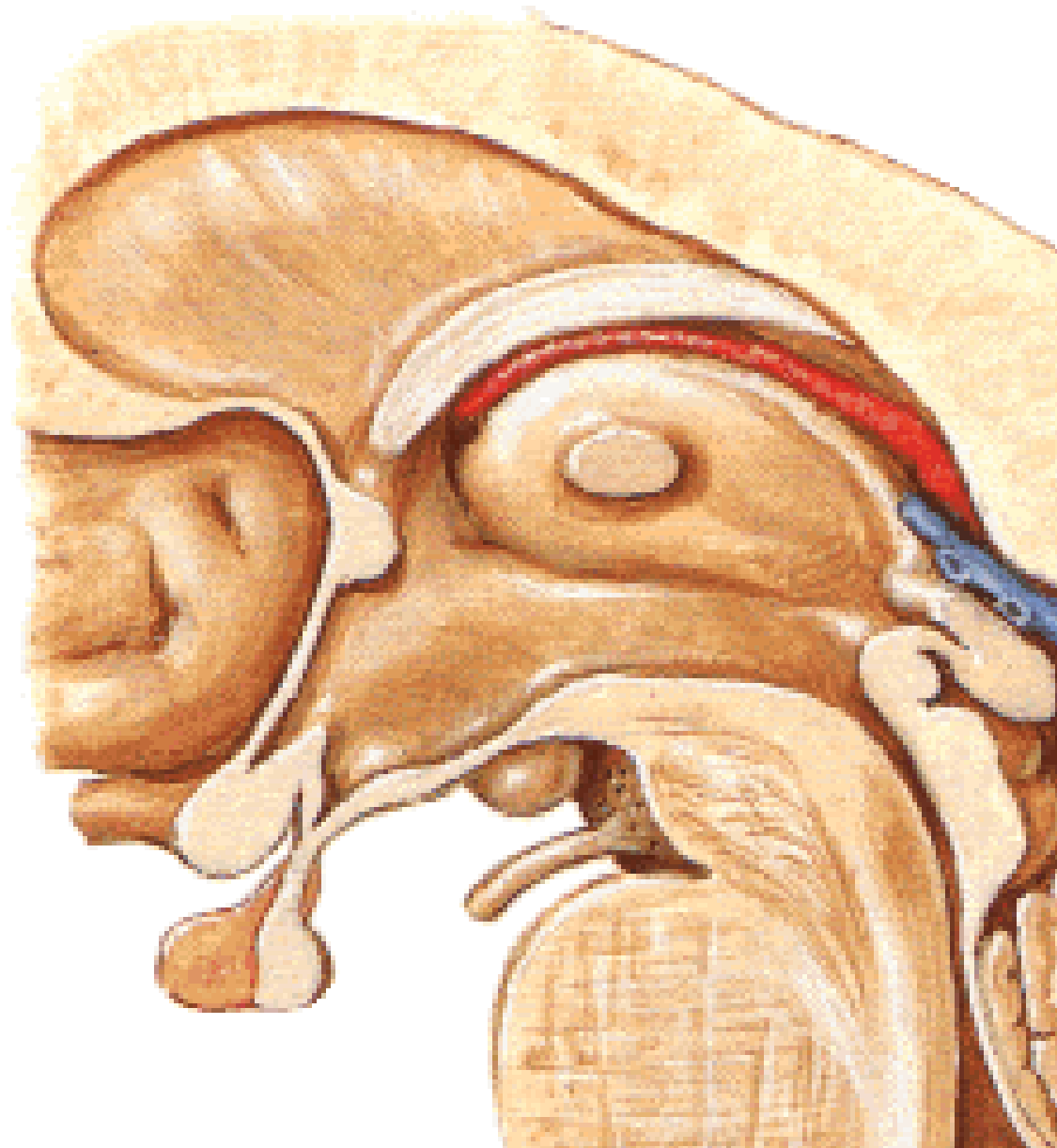
# Diencephalon



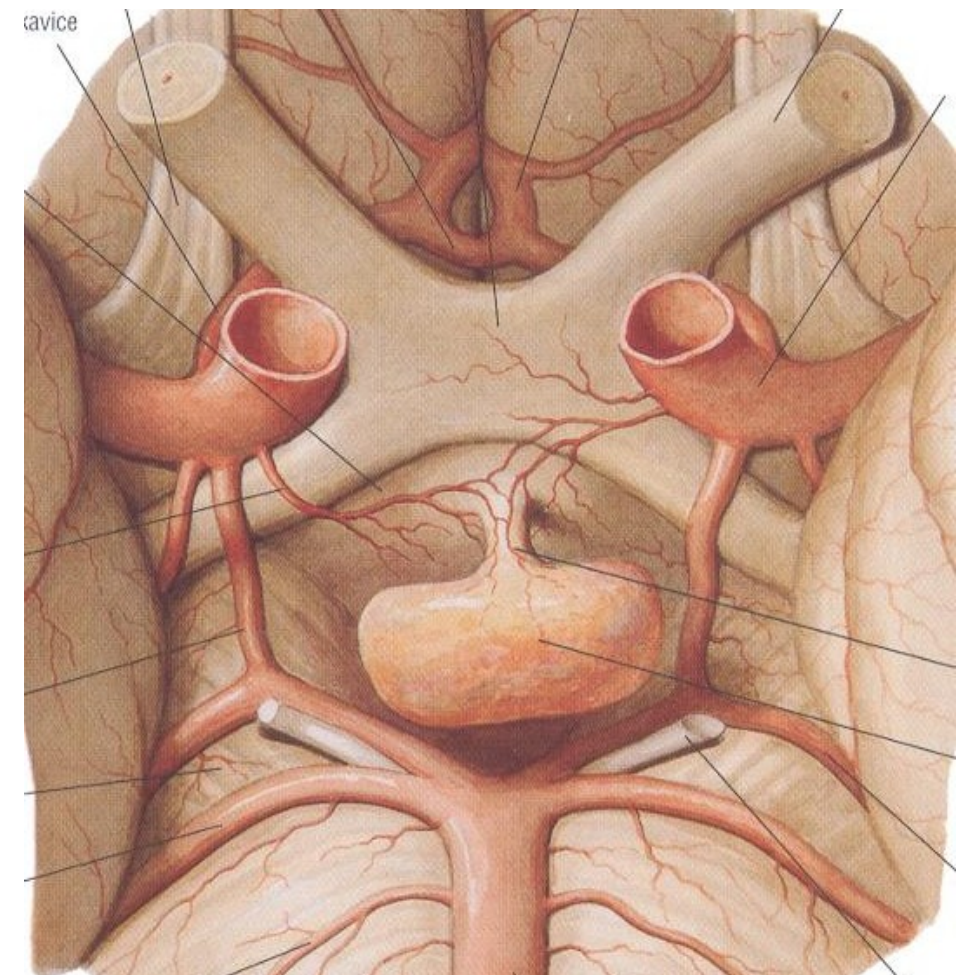
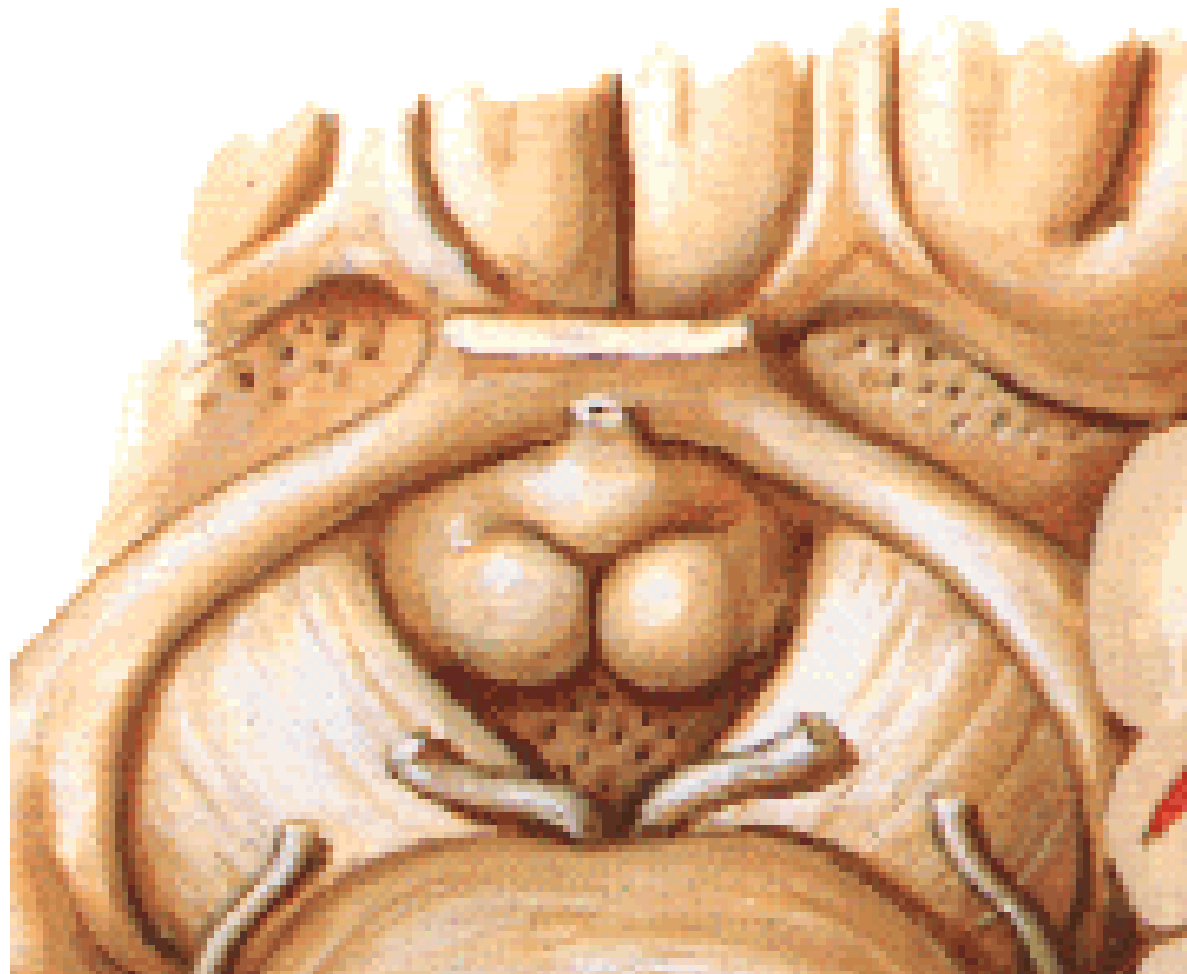
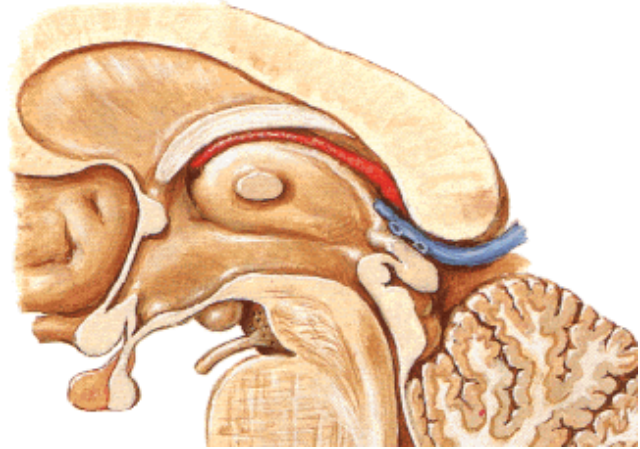
## Diencephalon - části



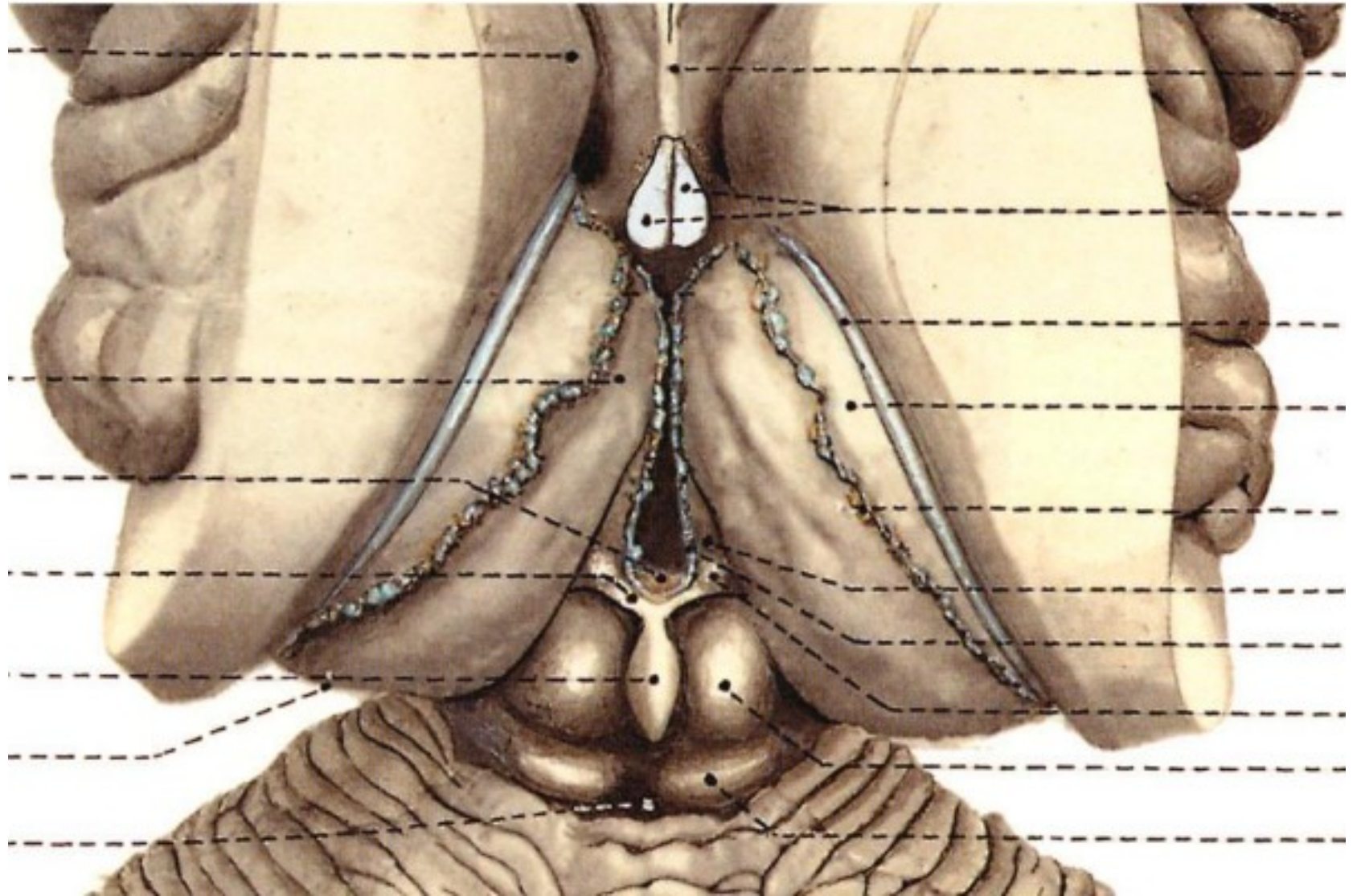
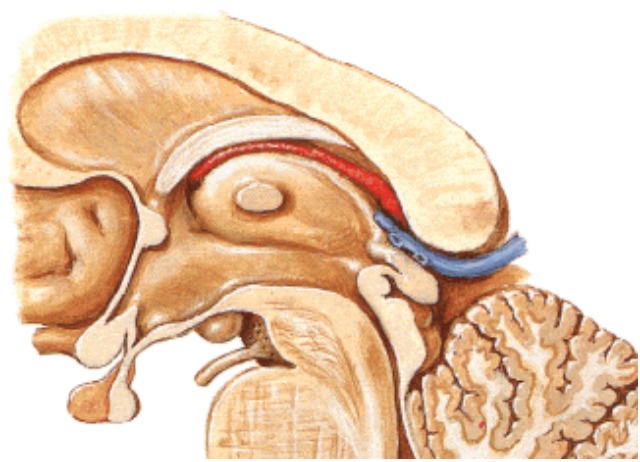
# ROSTRÁLNÍ STRANA DIENCEPHALA



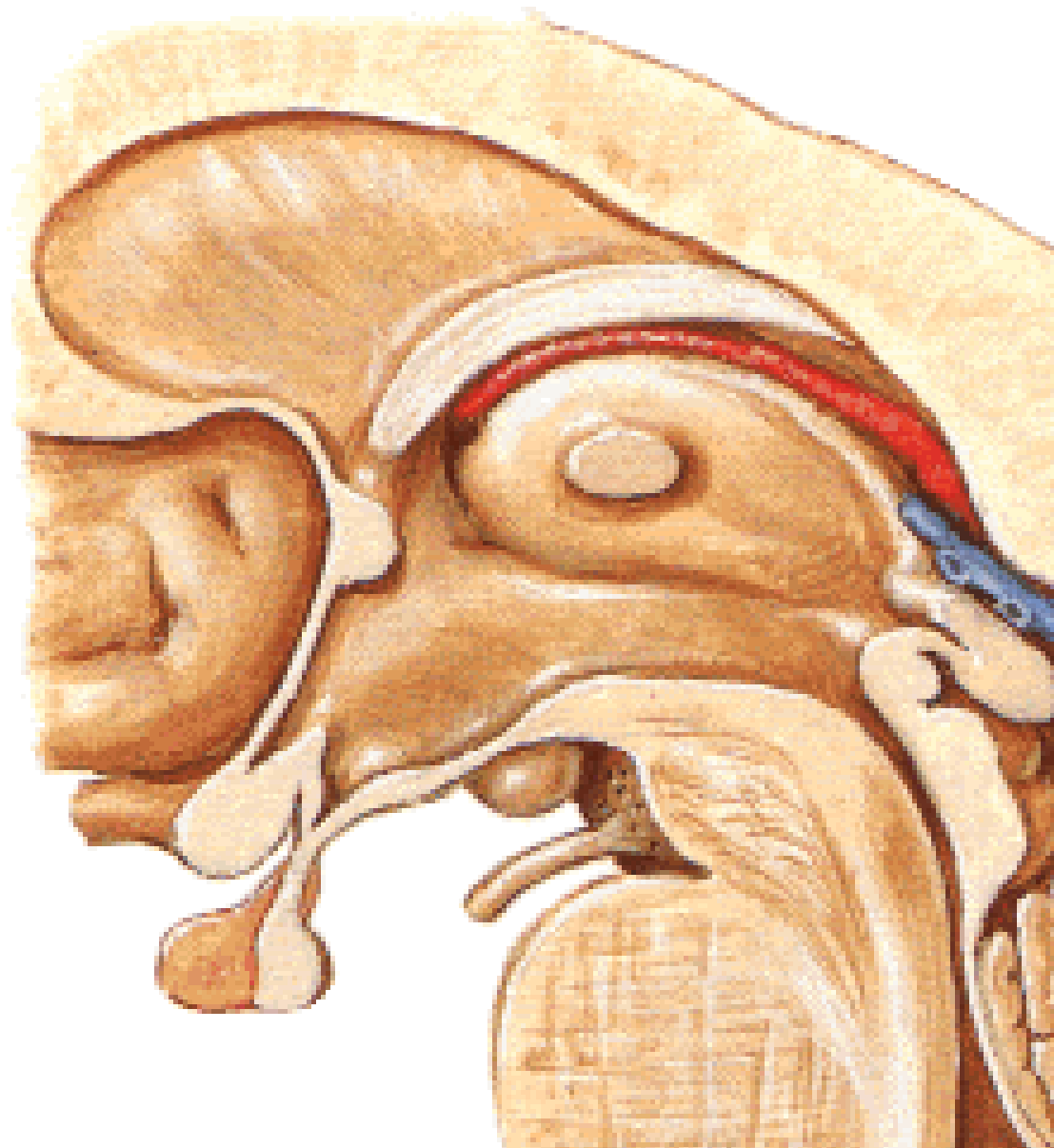
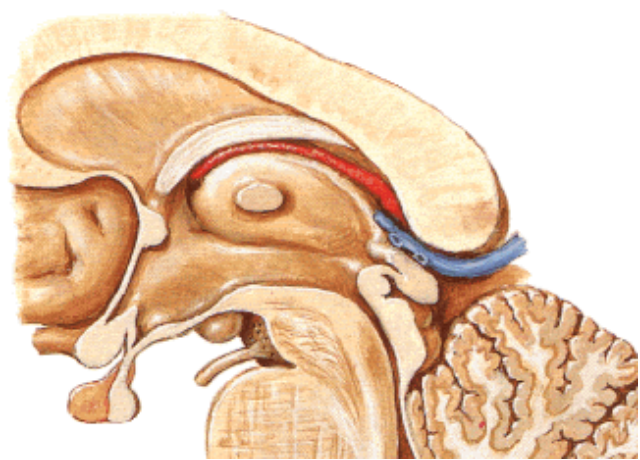
# BASALNÍ STRANA DIENCEPHALA



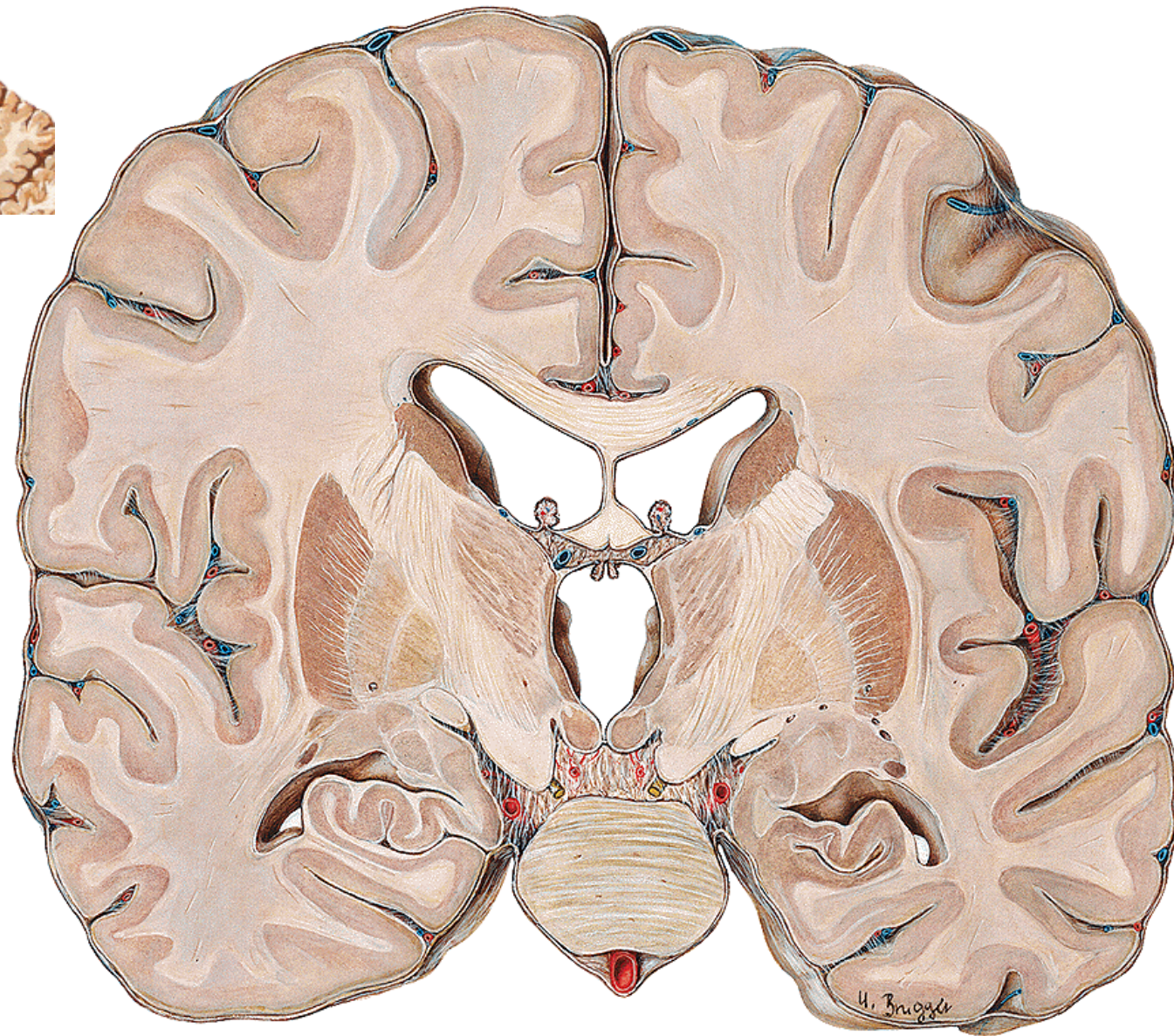
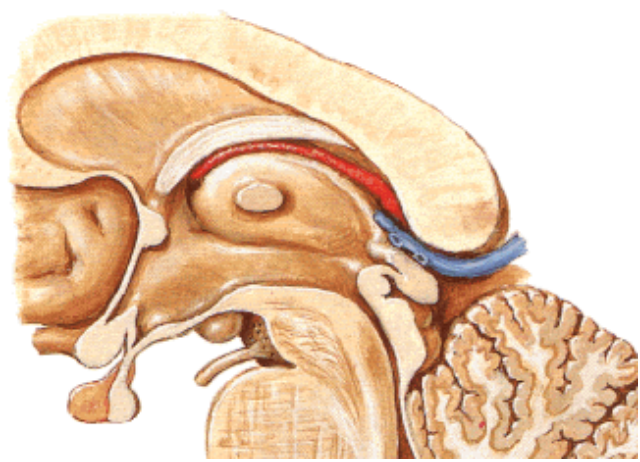
# DORSALNÍ STRANA DIENCEPHALA



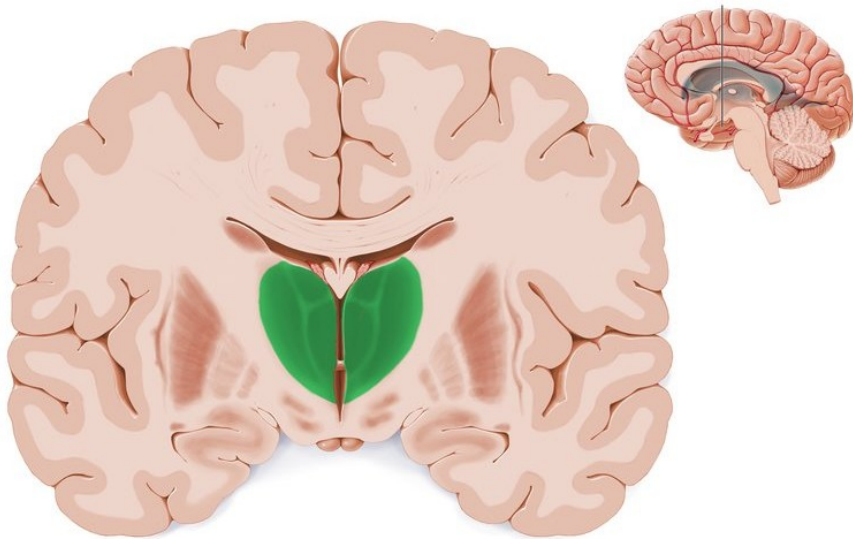
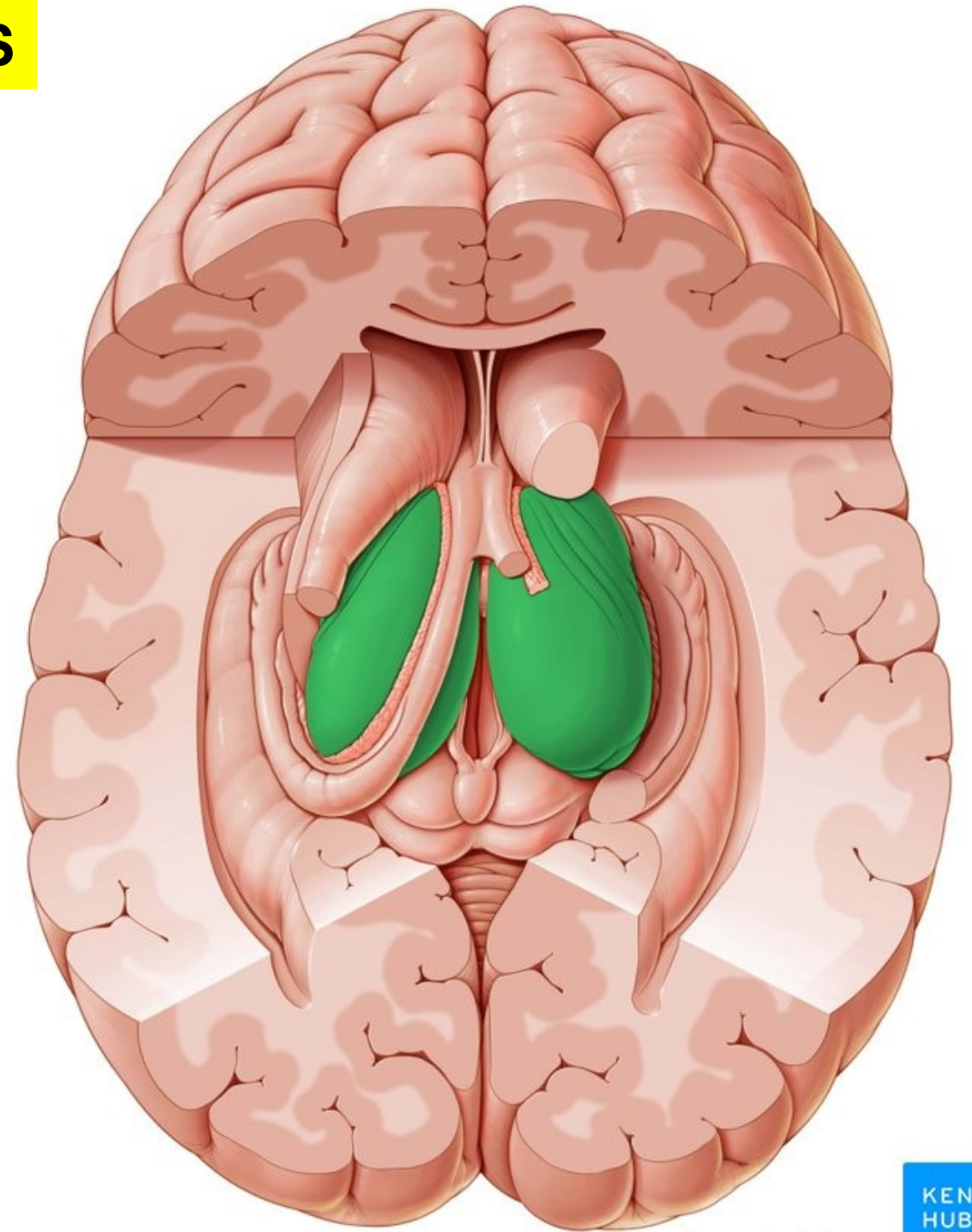
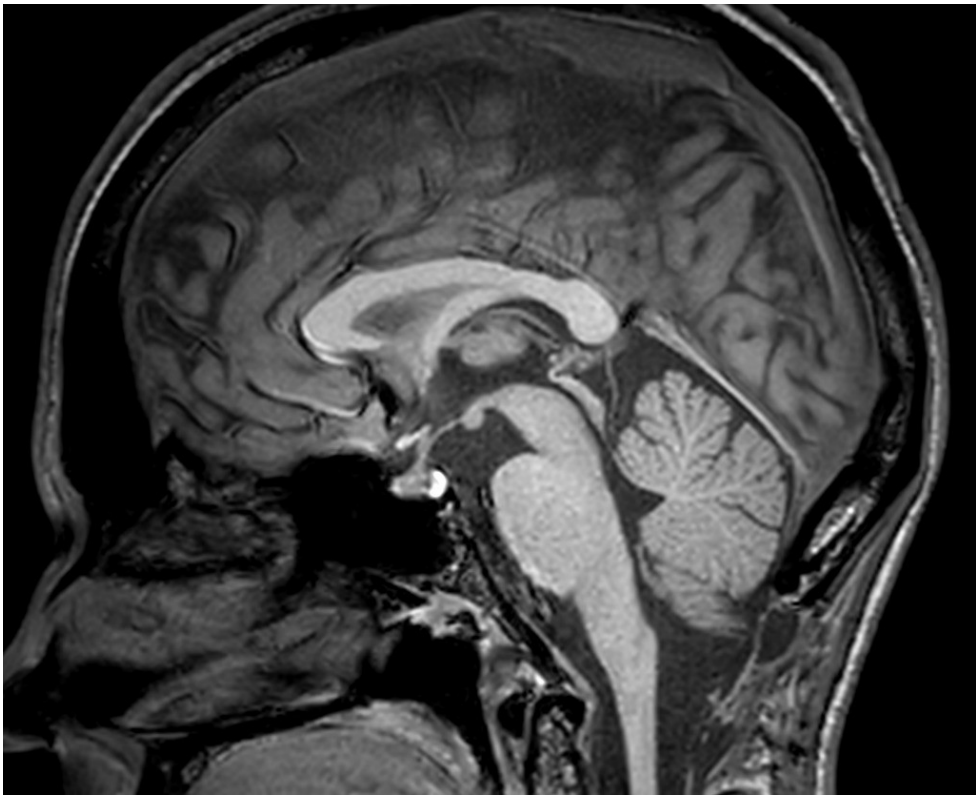
# MEDIÁLNÍ STRANA DIENCEPHALA



# LATERÁLNÍ STRANA DIENCEPHALA

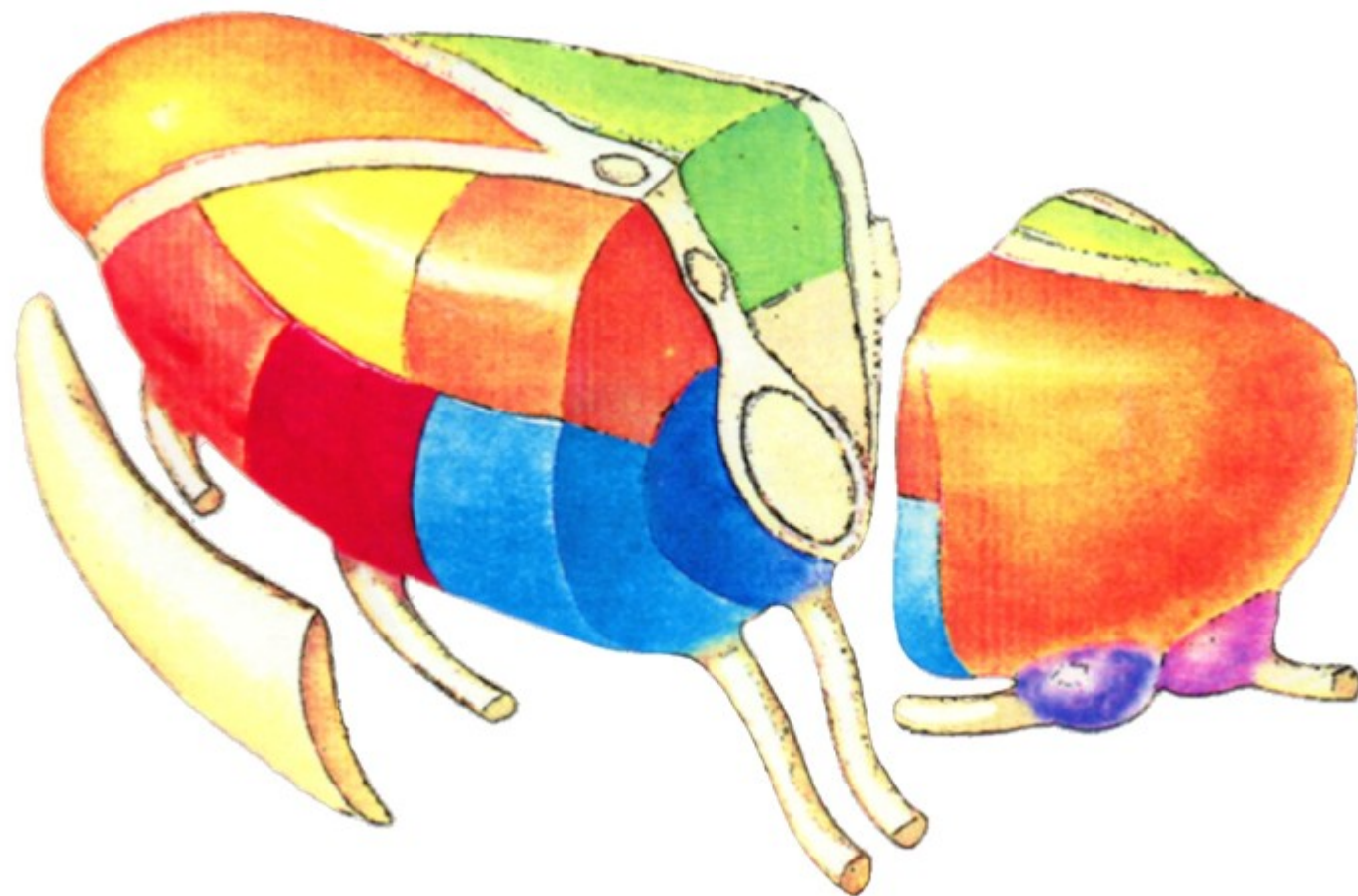
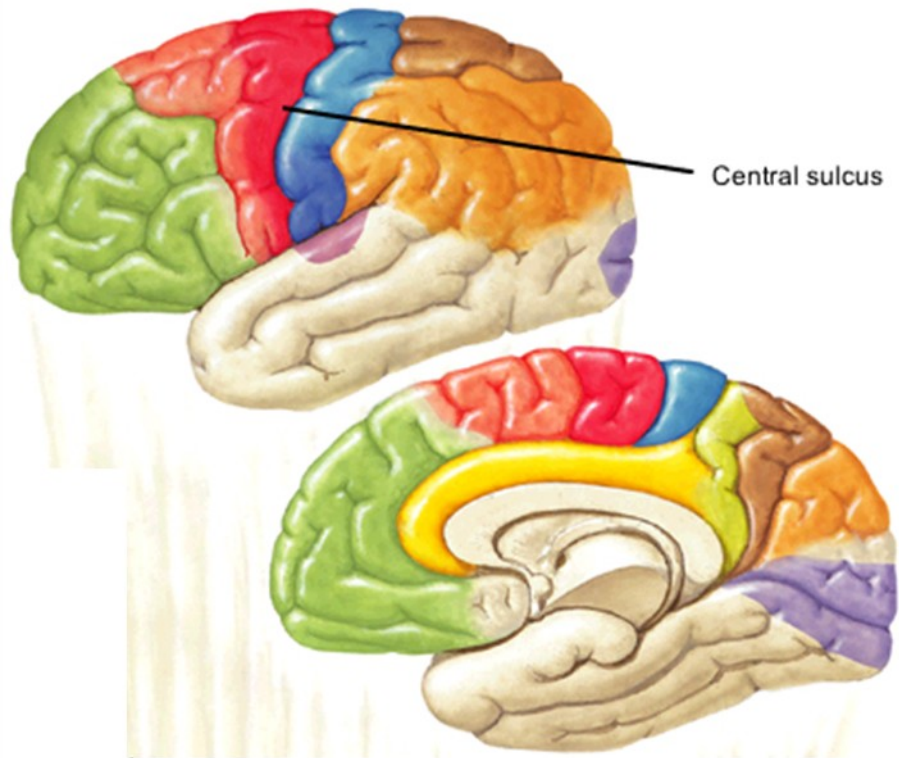


# THALAMUS

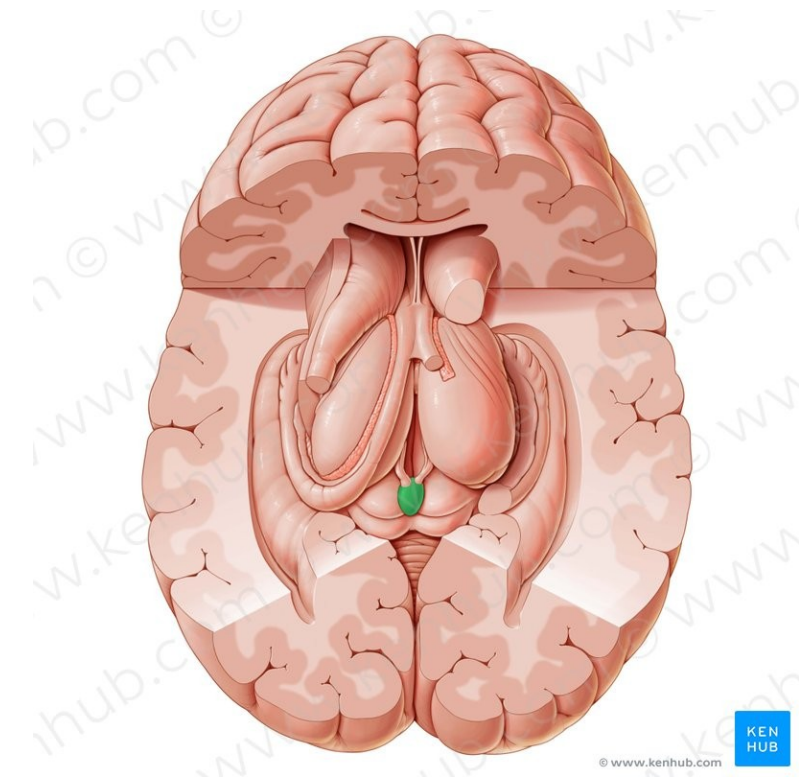
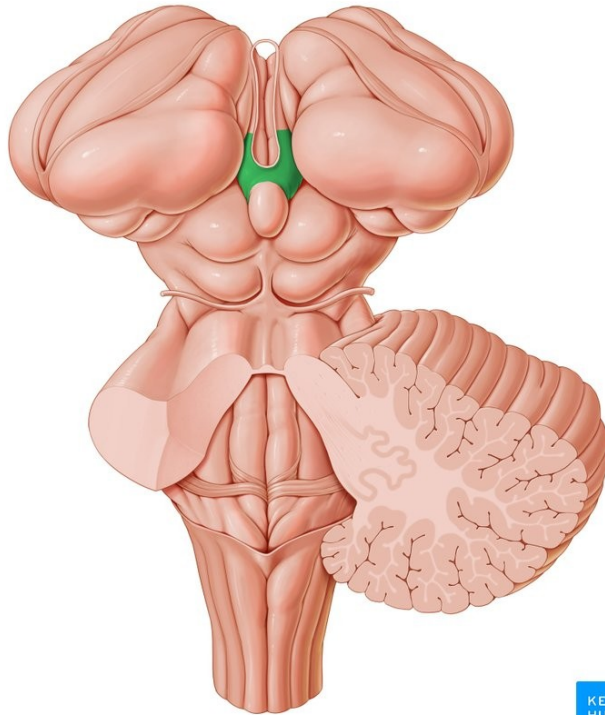
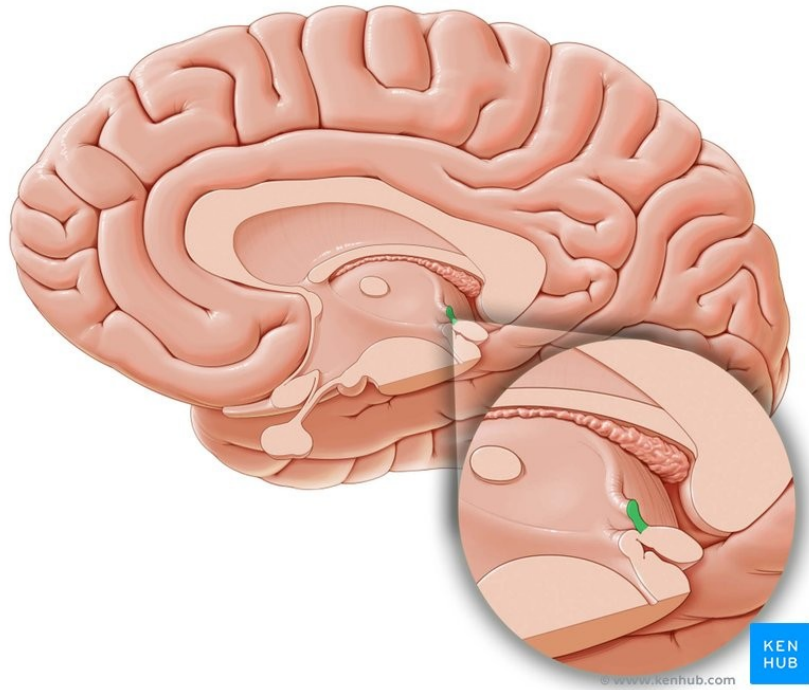
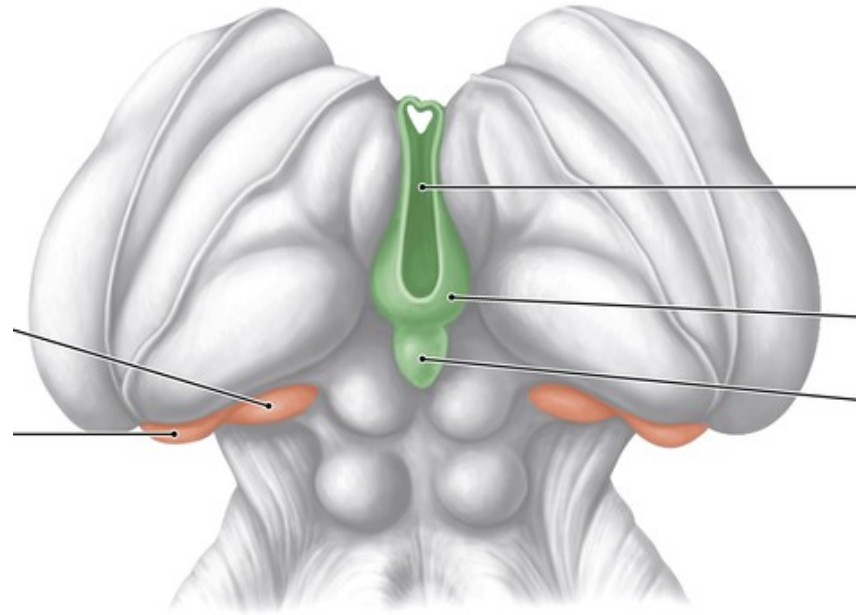
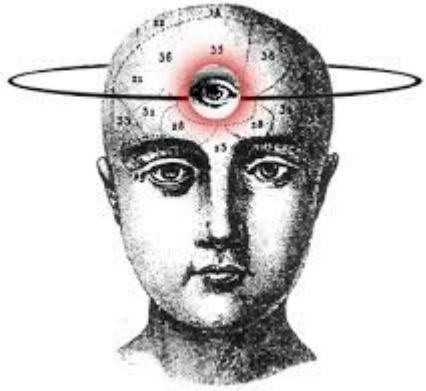




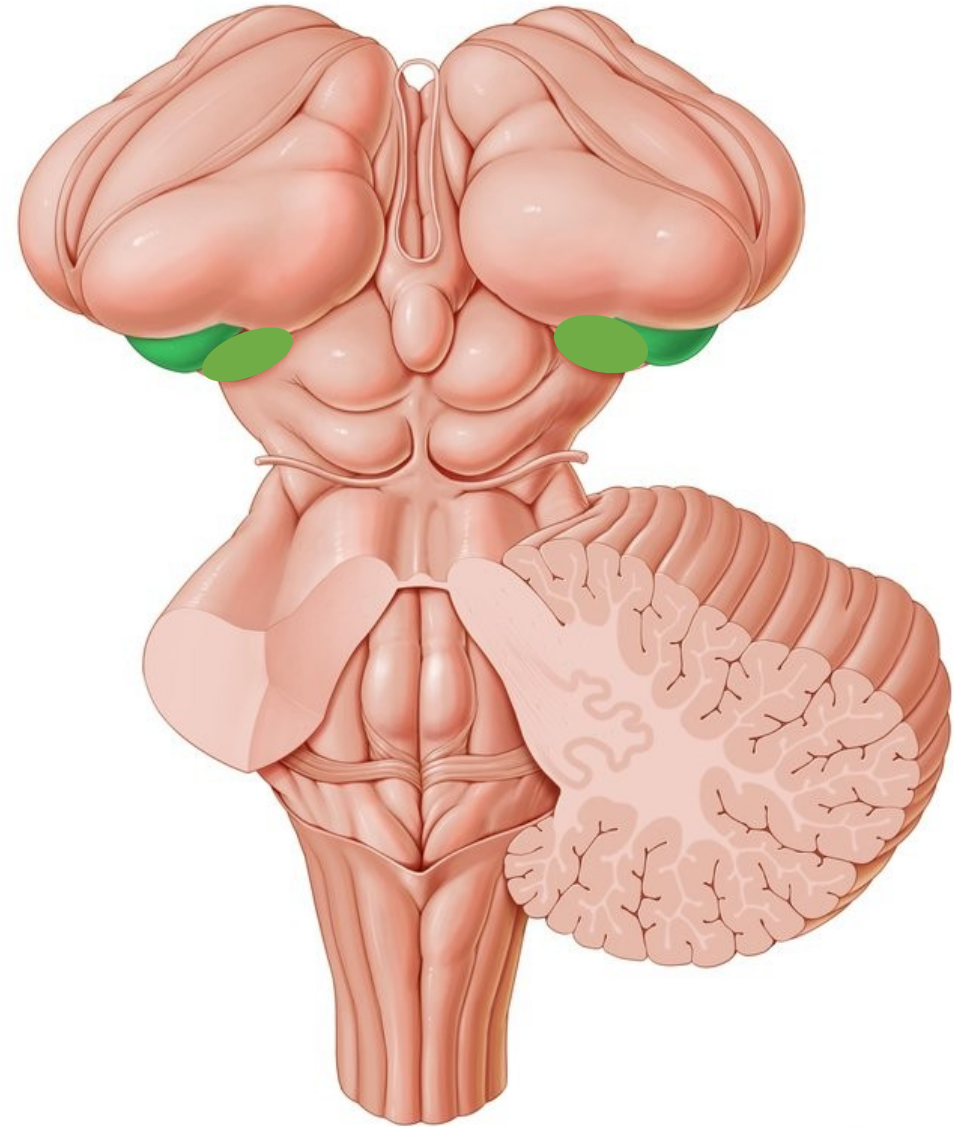
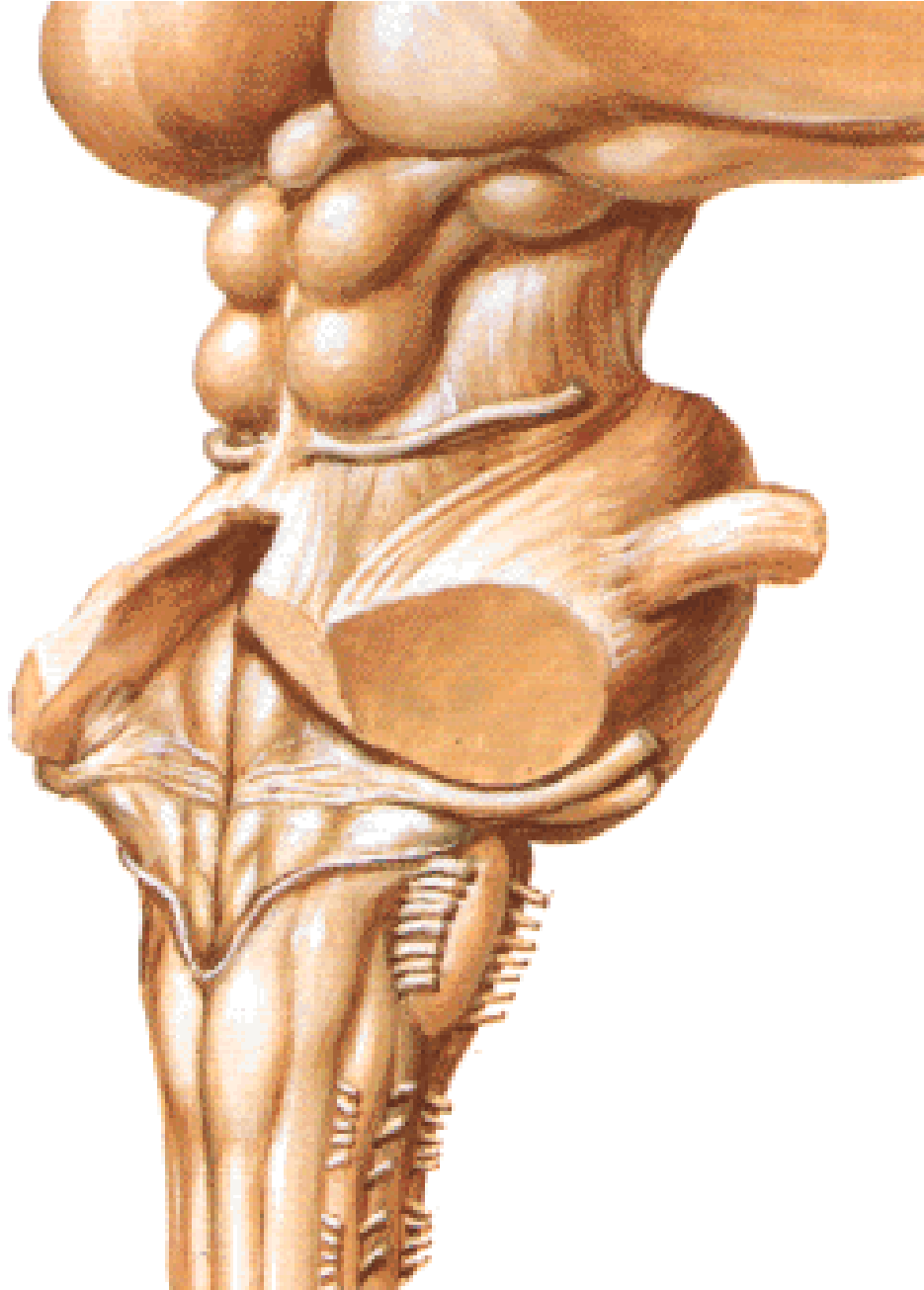
# THALAMICKÁ JÁDRA



# EPITHALAMUS

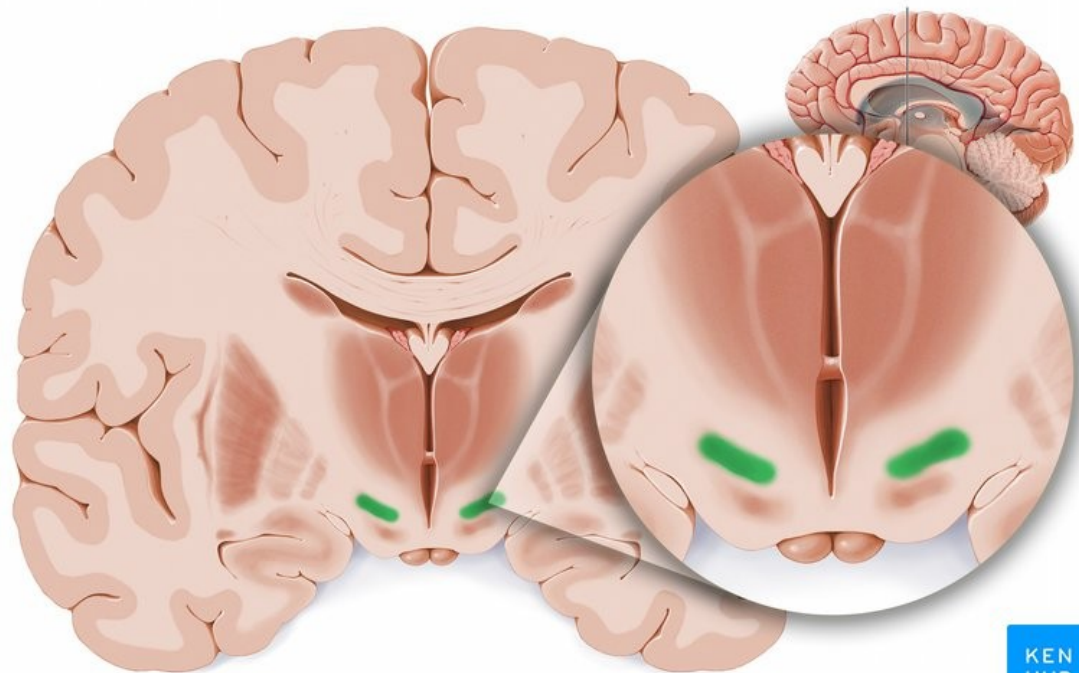


# METATHALAMUS

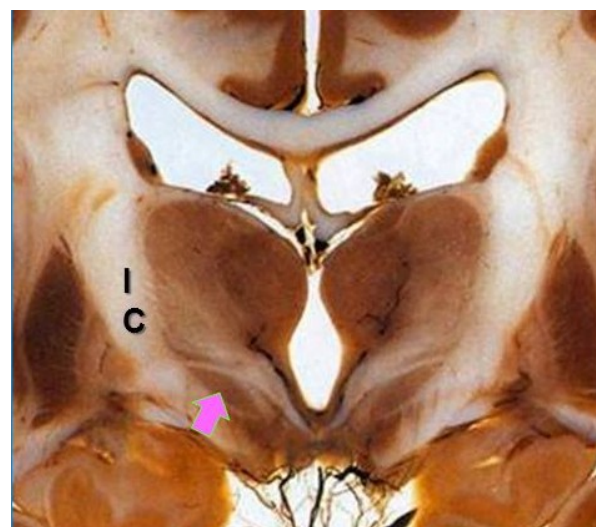
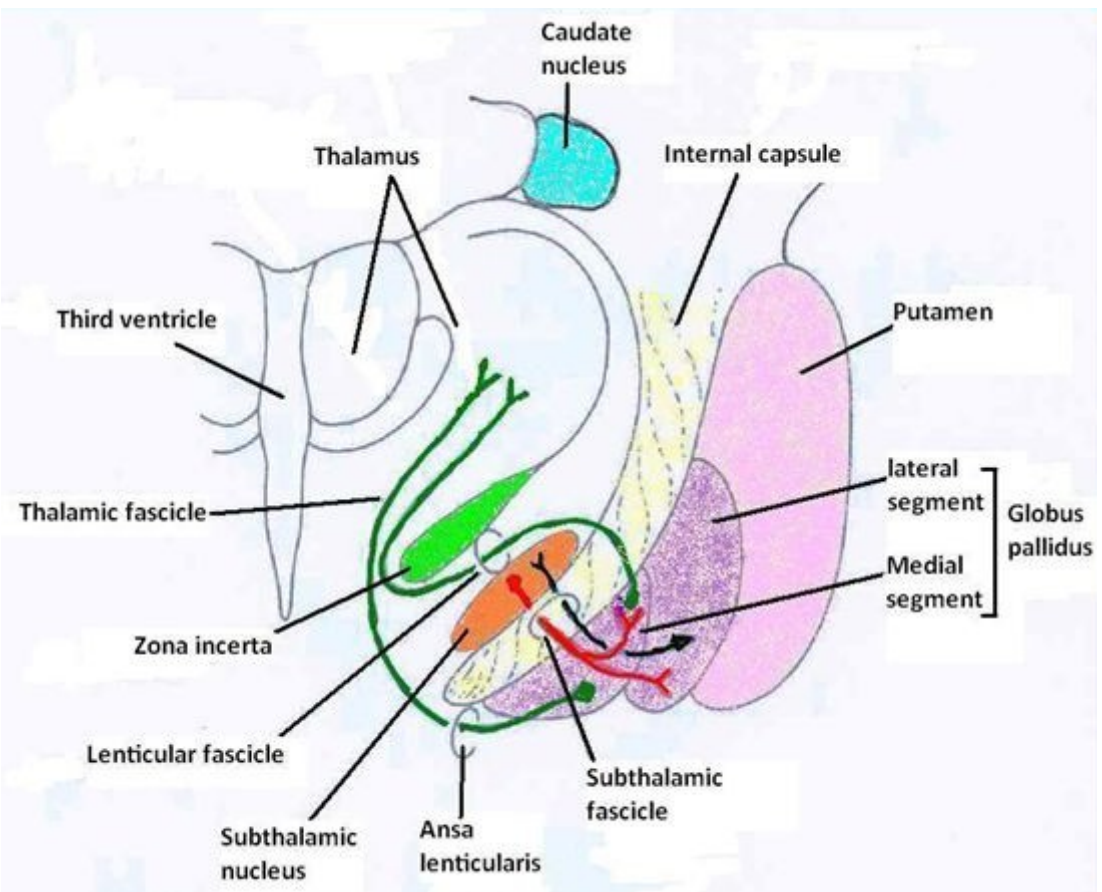


# SUBTHALAMUS

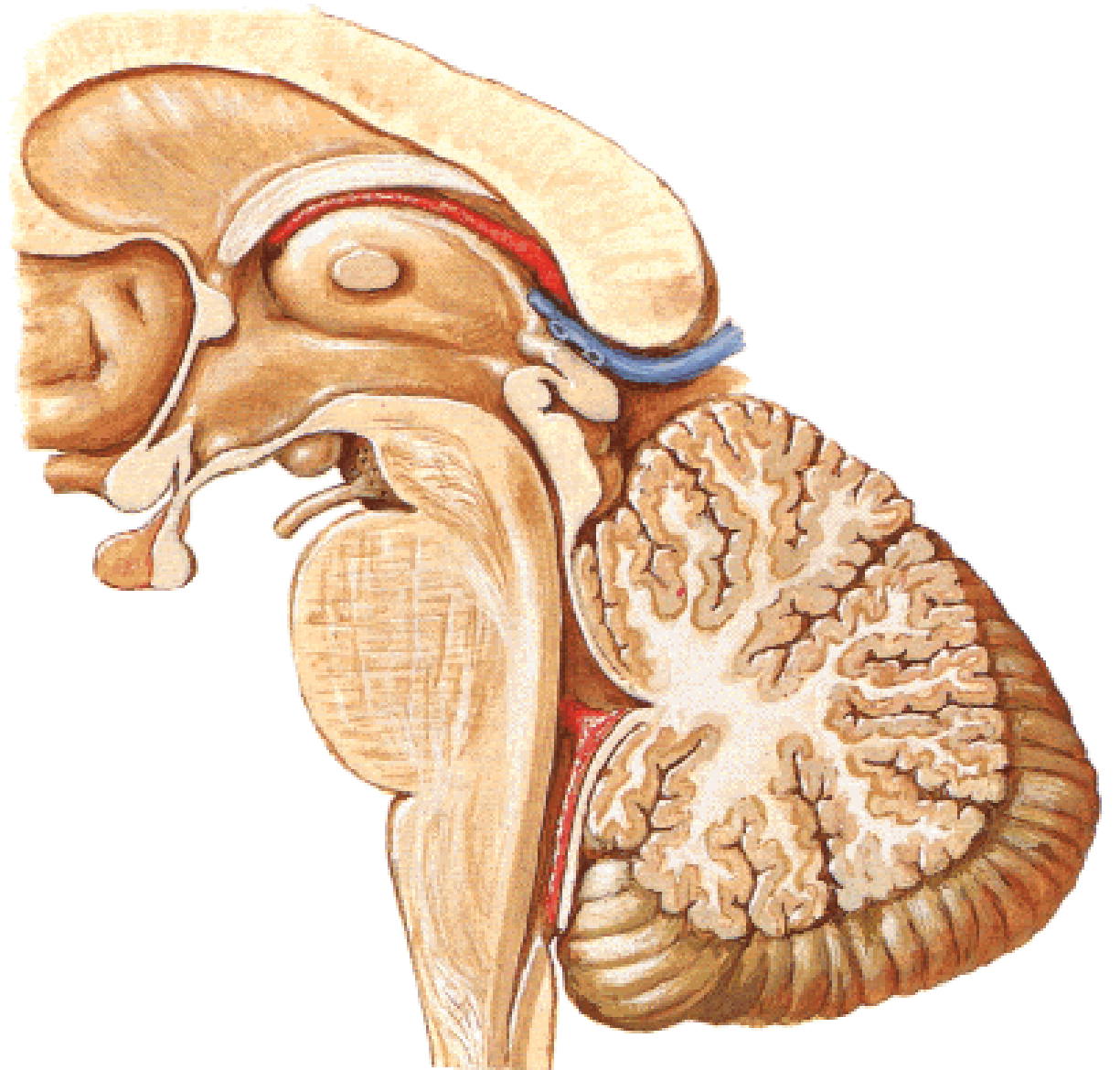
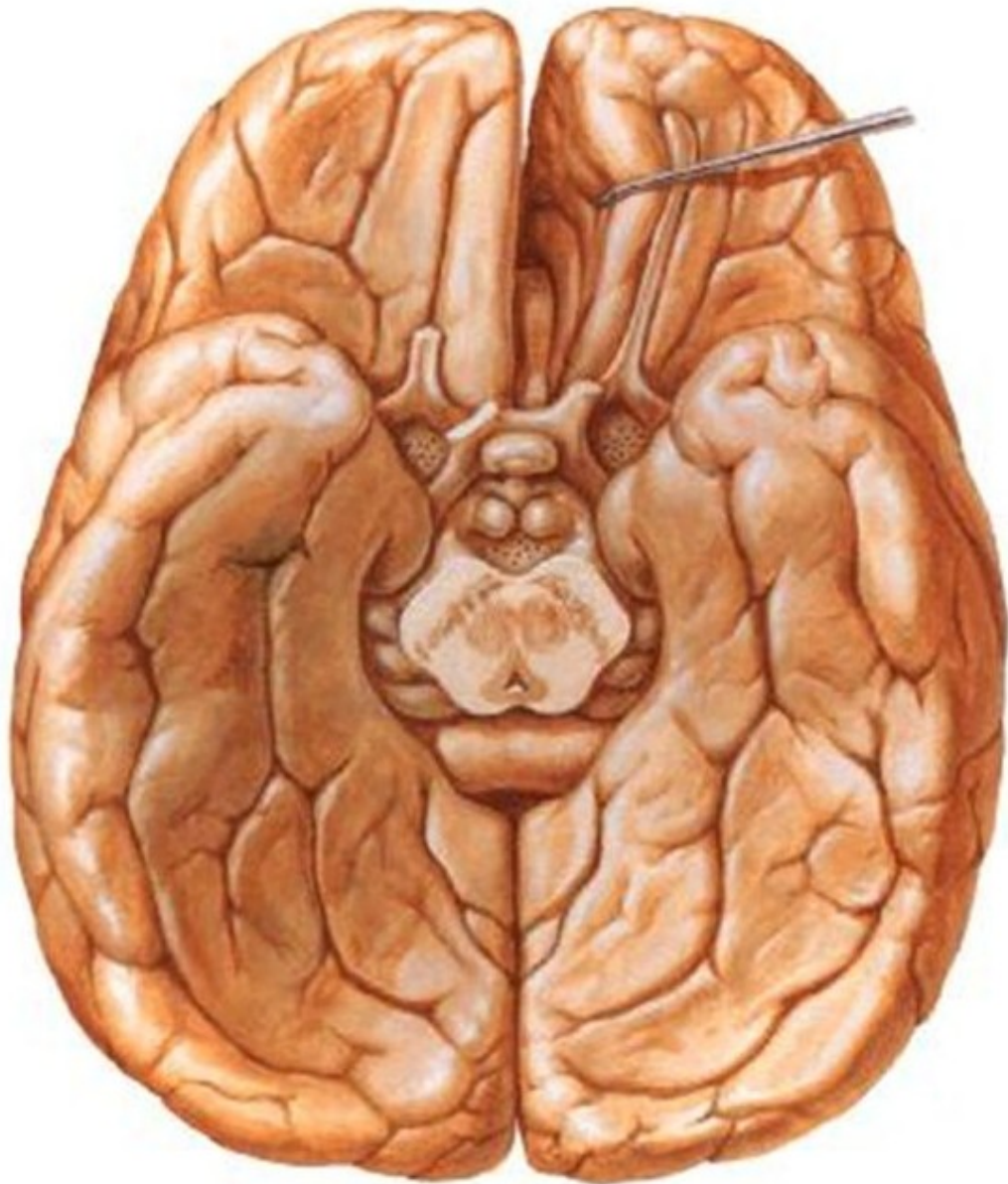
## NCL.SUBTHALAMICUS ZONA INCERTA

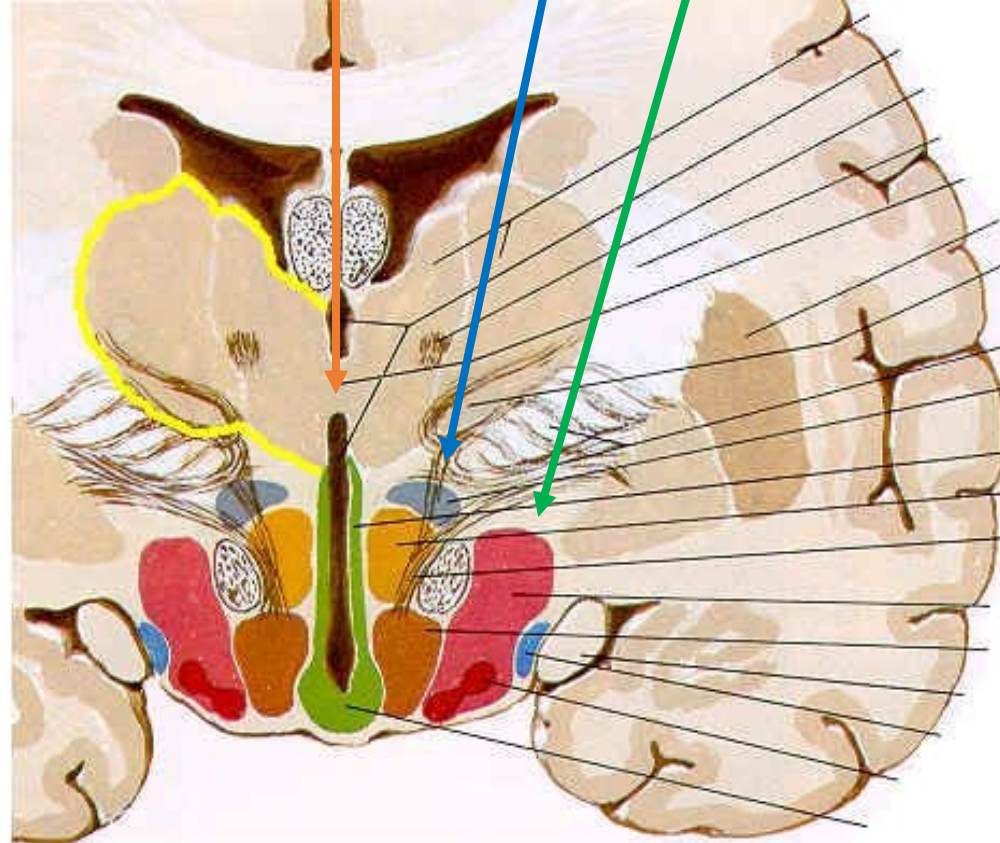


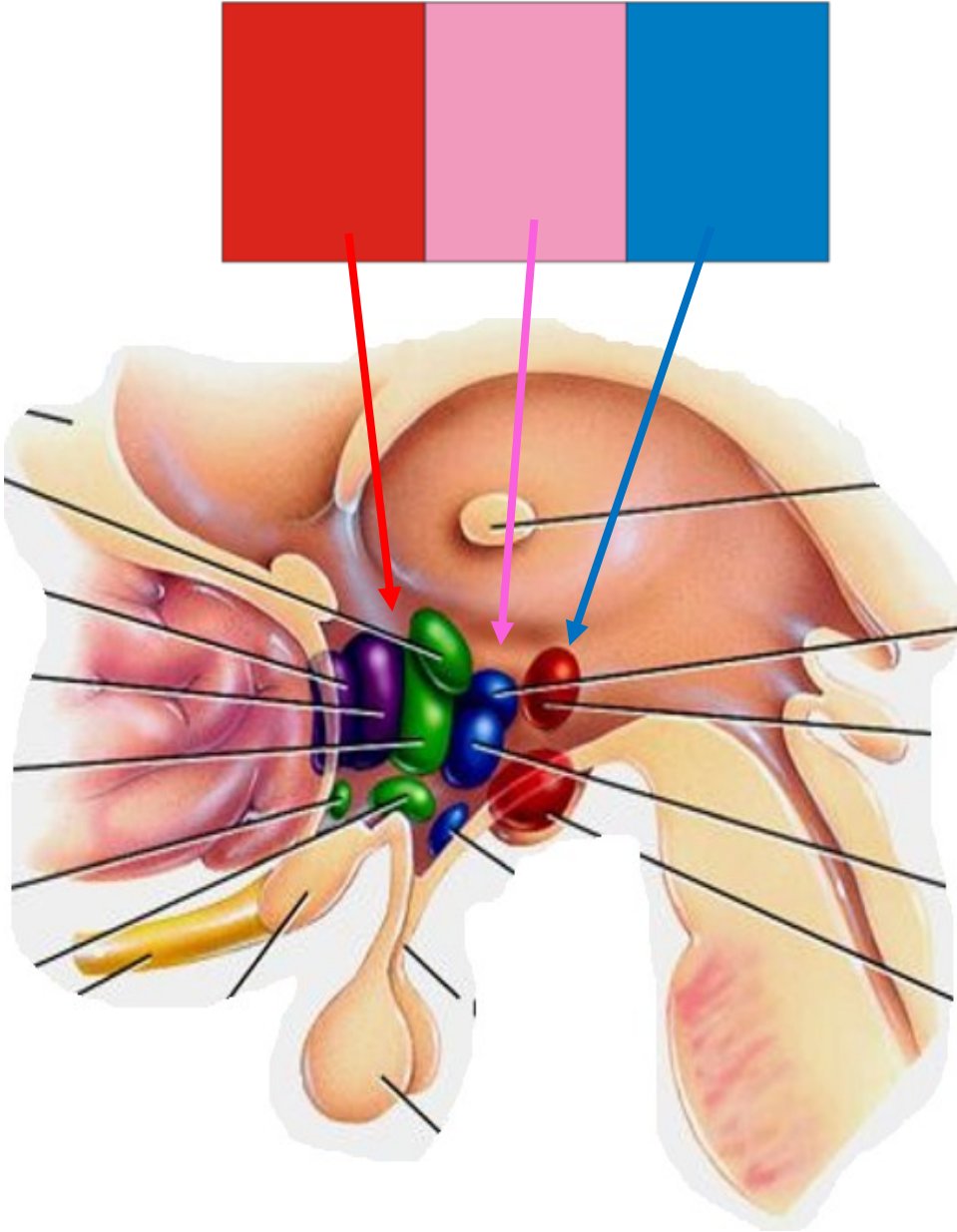
© www.kenhub.com

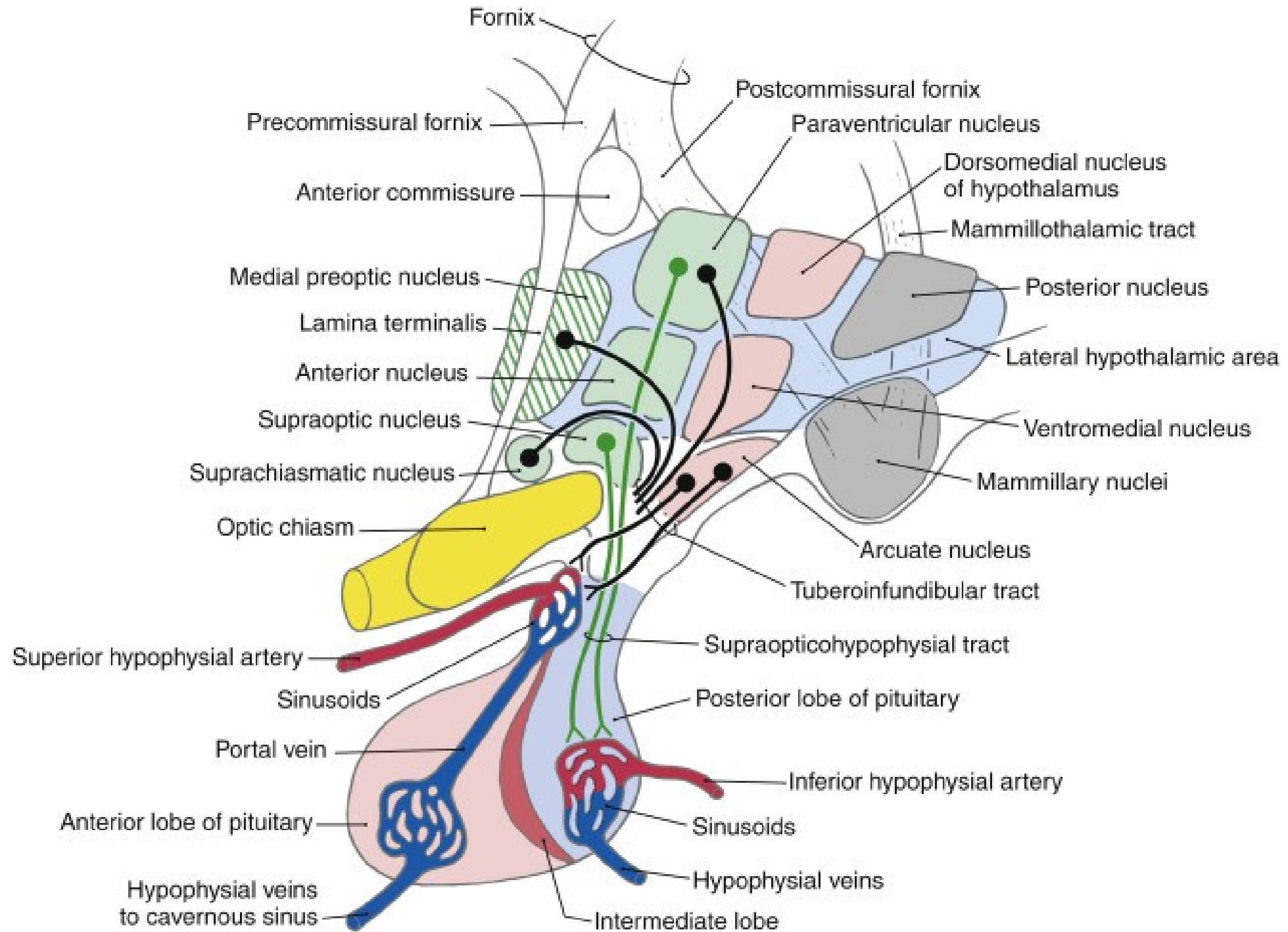


# HYPOTHALAMUS



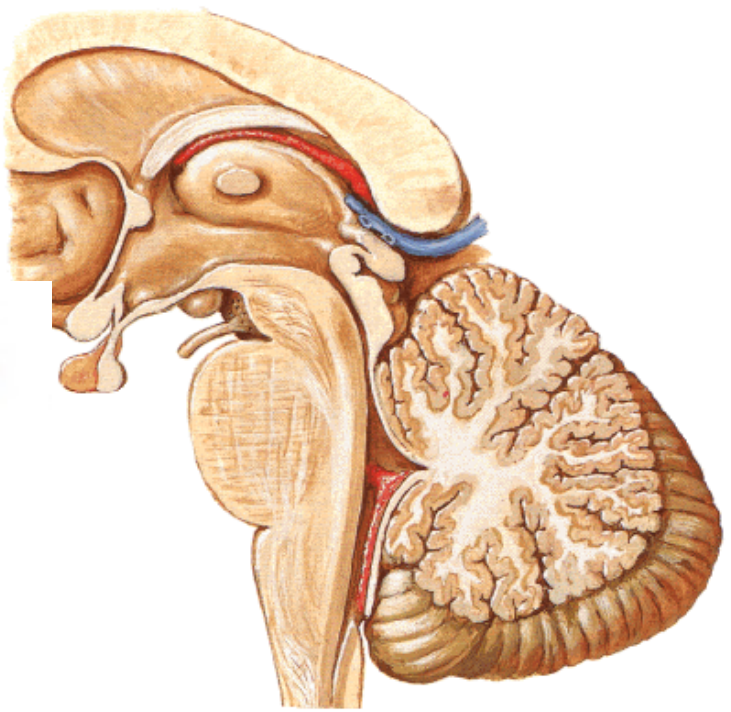
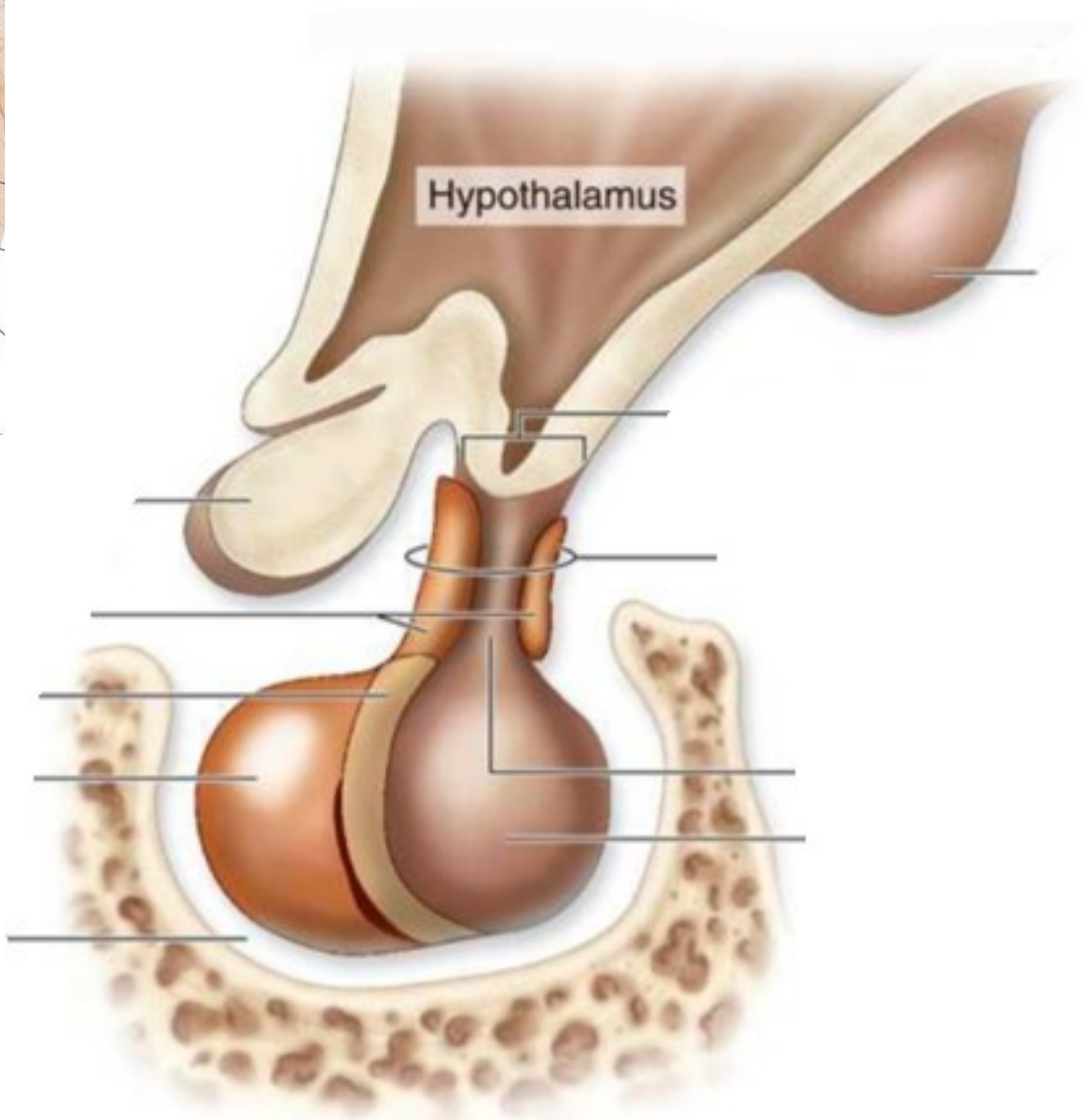
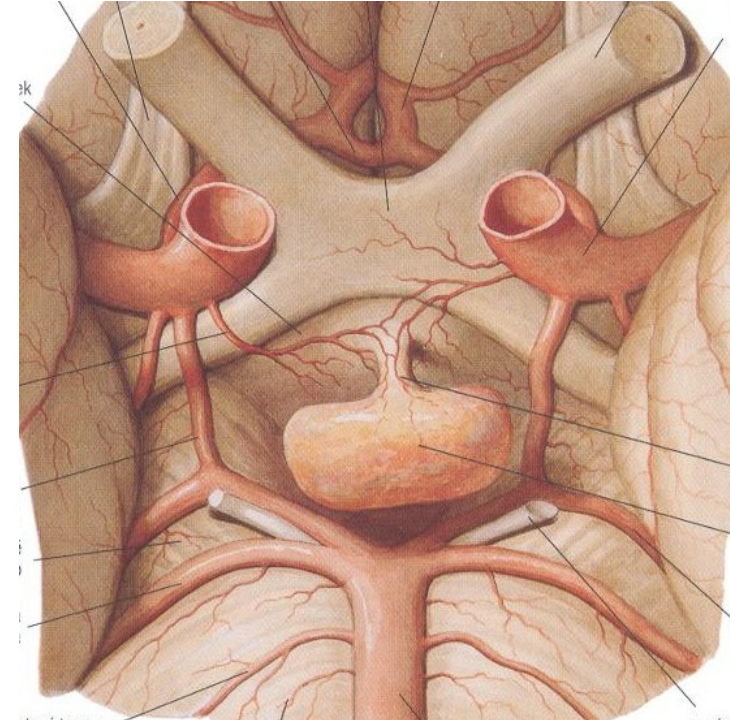




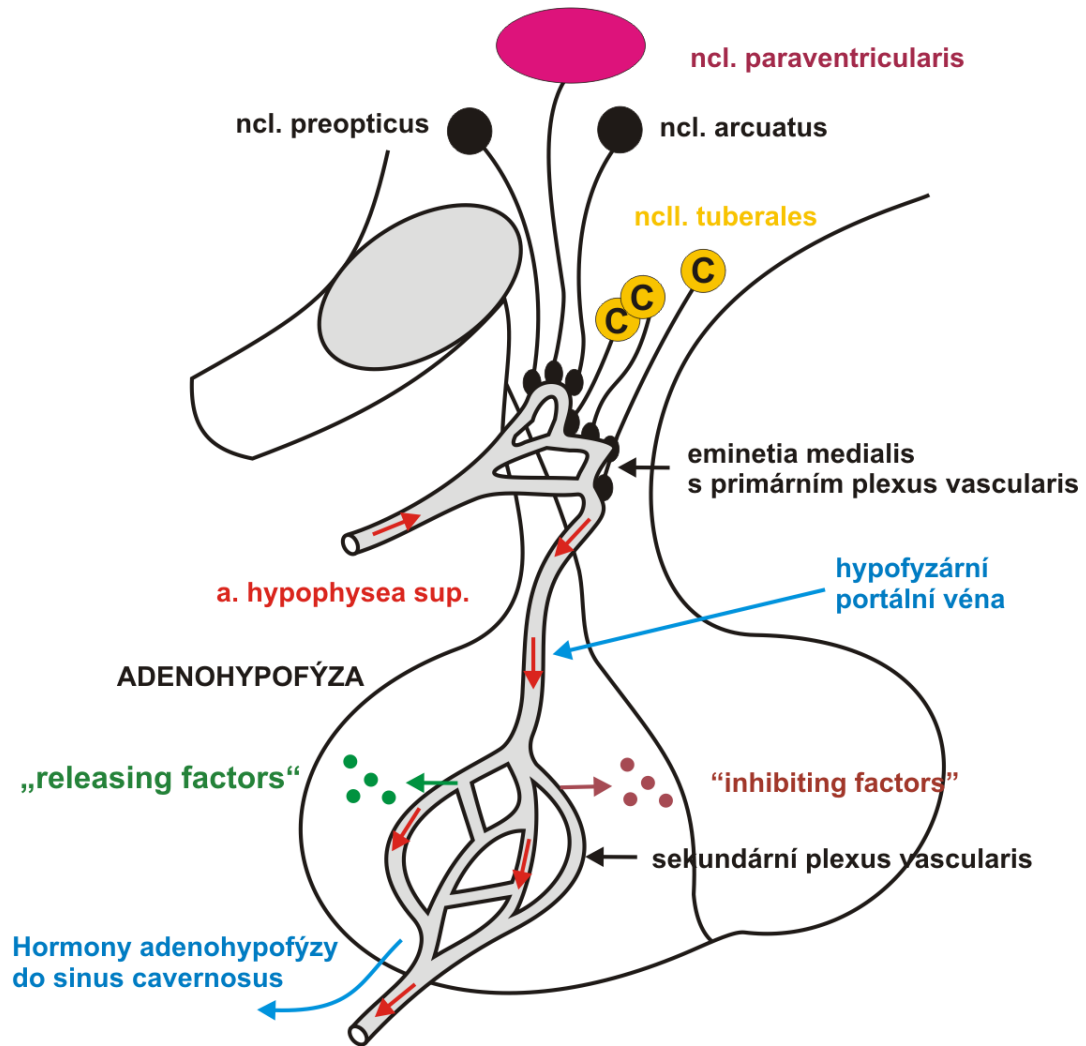




# HYPOPHYSIS



# ADENOHYPHYSIS



# NEUROHYPHYSIS

