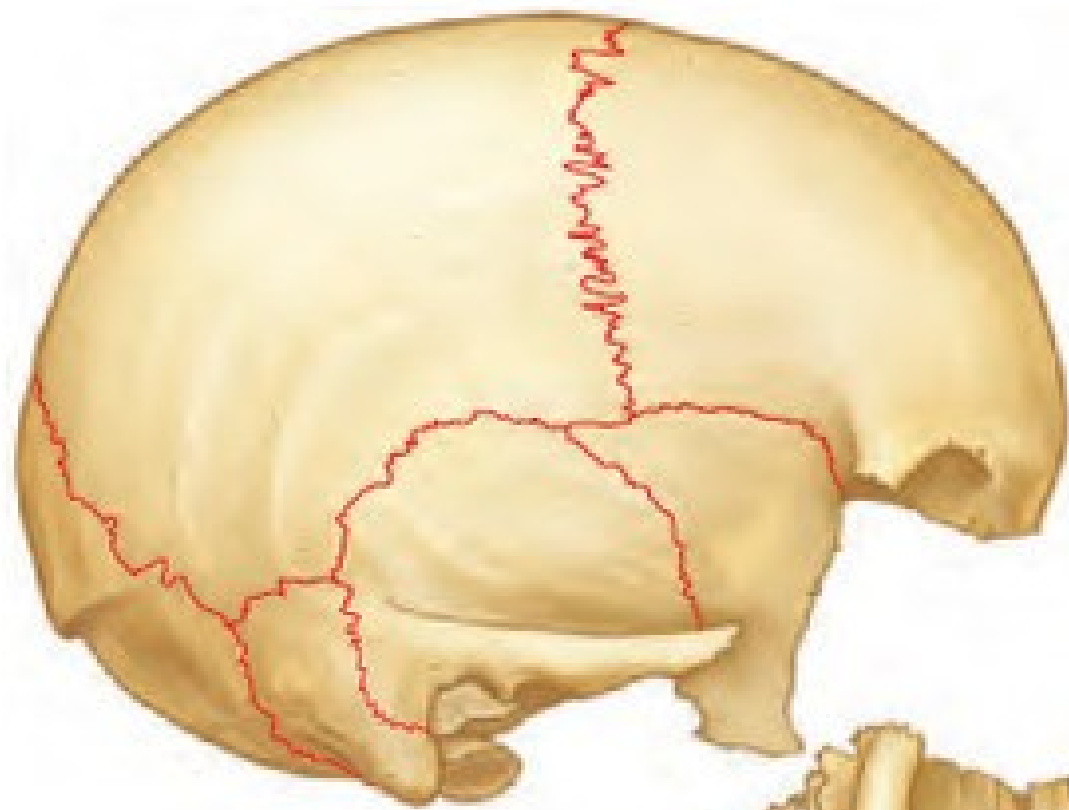




NEUROCRANIUM



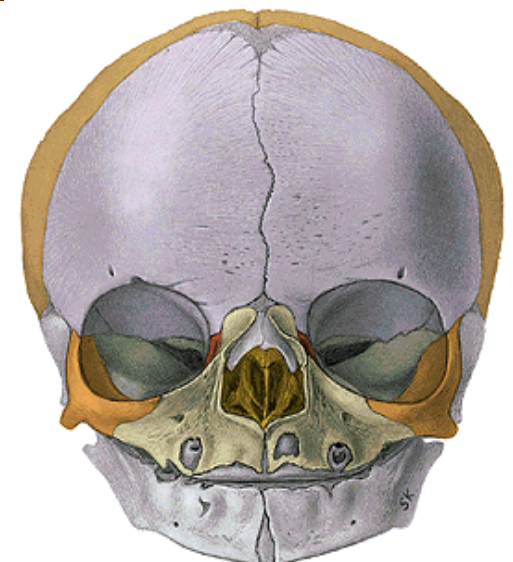
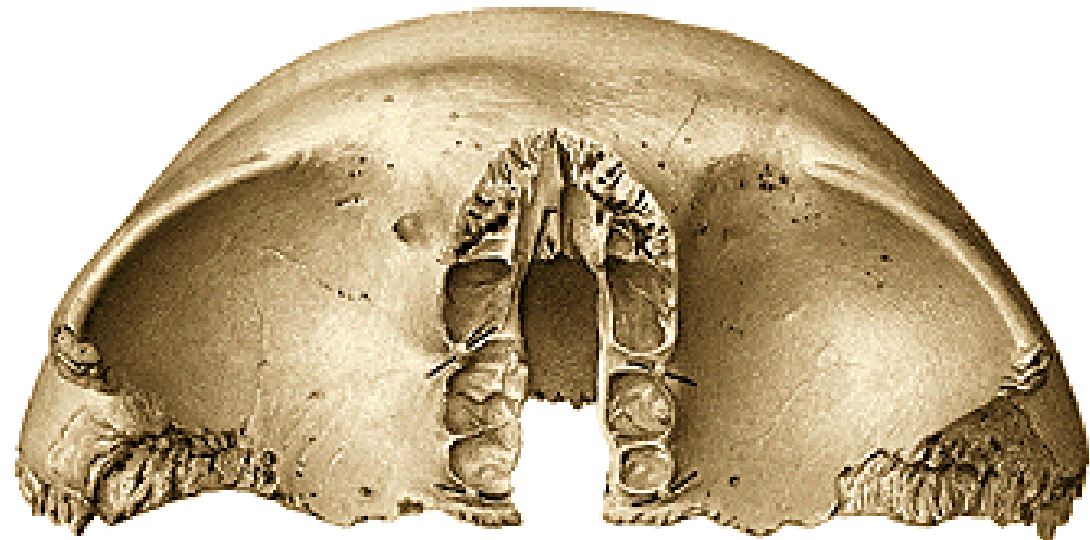
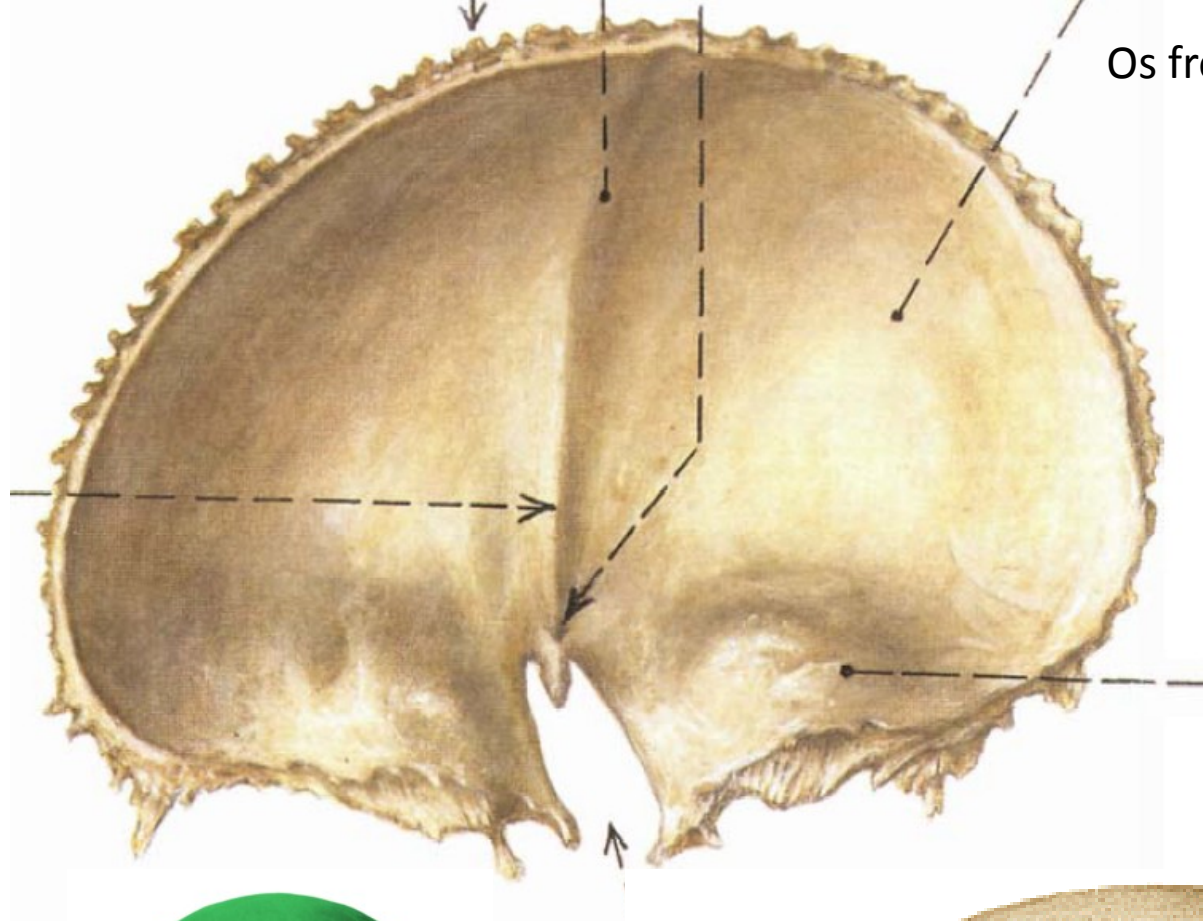
Neurocranium

Cranium



Viscerocranium

Os frontale

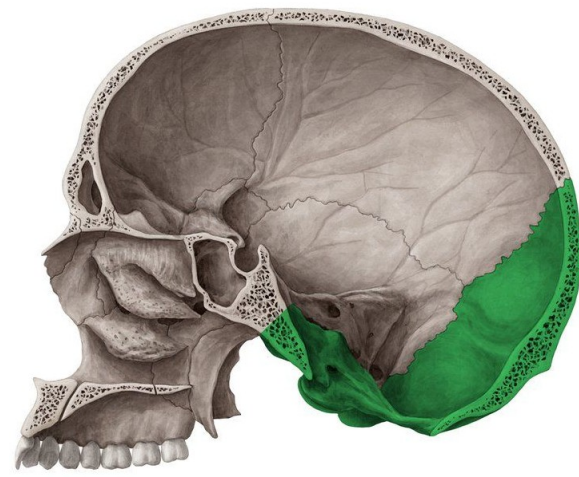


Os parietale





Os occipitale

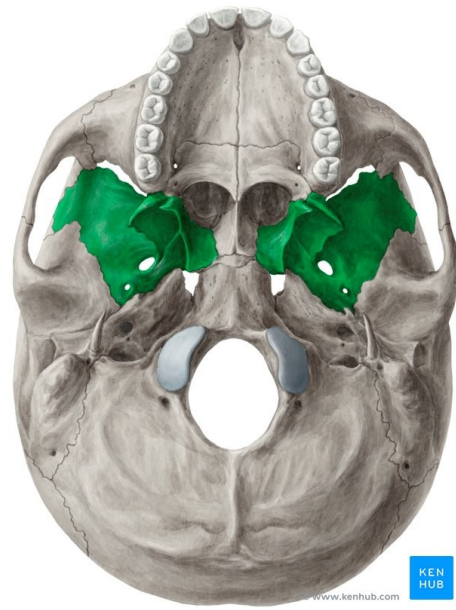




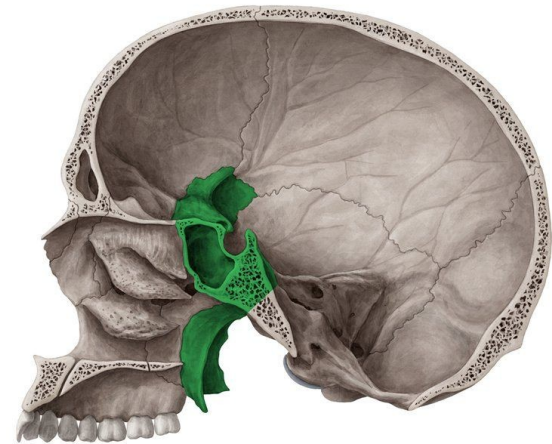
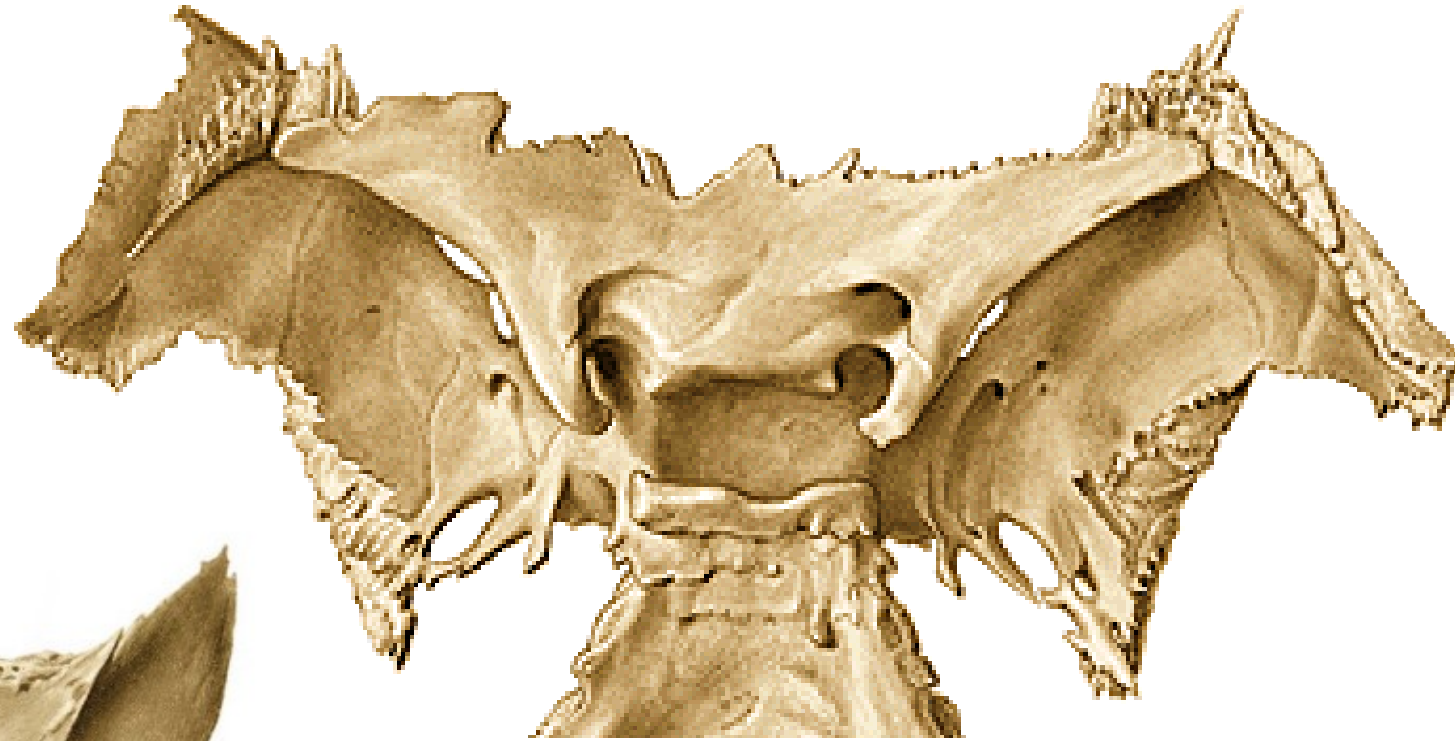
# Os sphenoidale



© www.kenhub.com  
KEN HUB

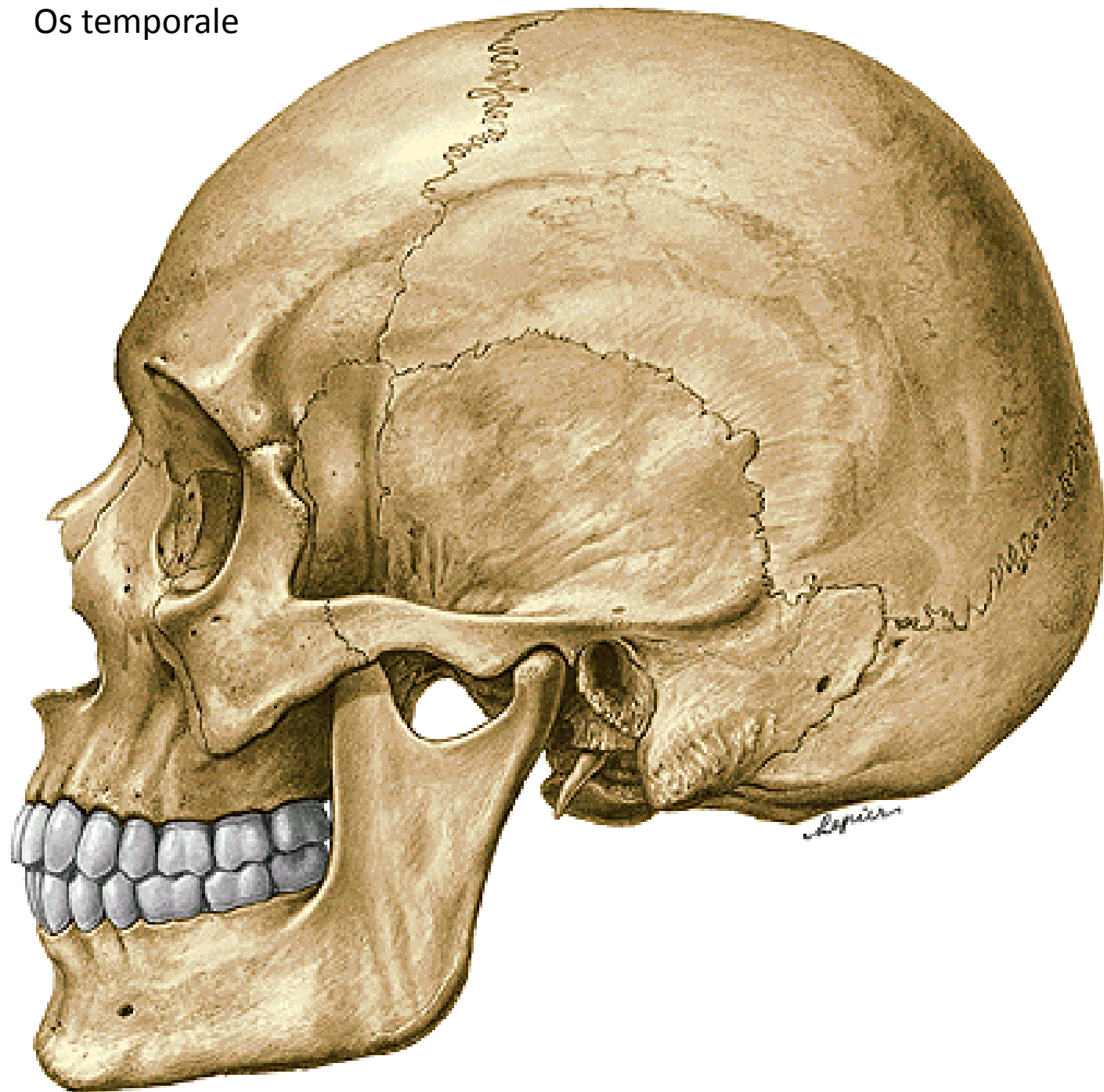


© www.kenhub.com  
KEN HUB



© www.kenhub.com  
KEN HUB

Os temporale





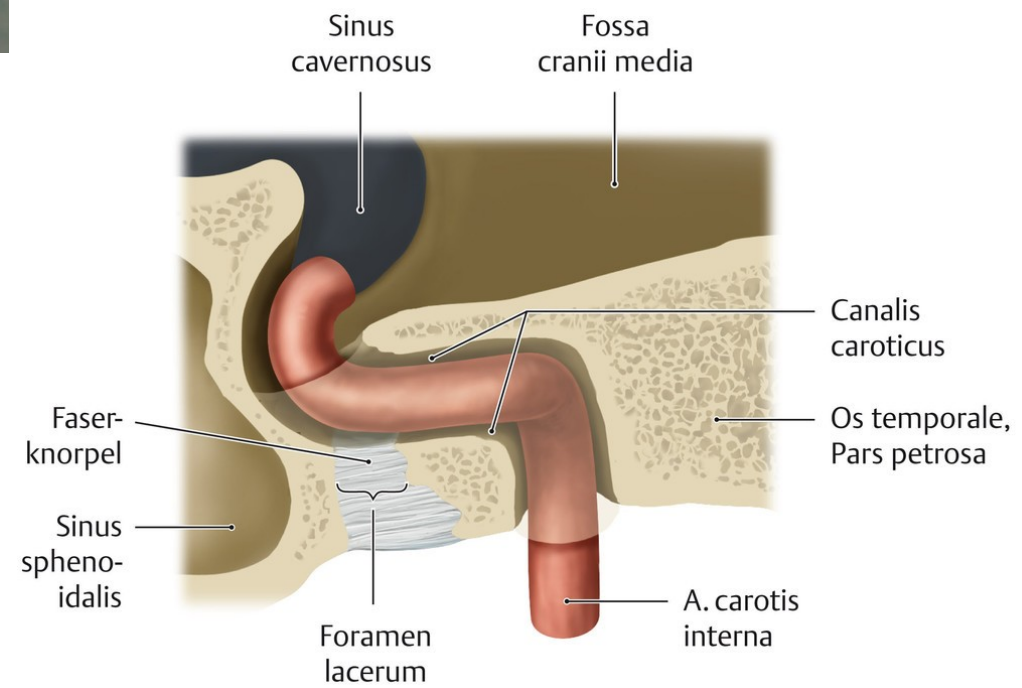
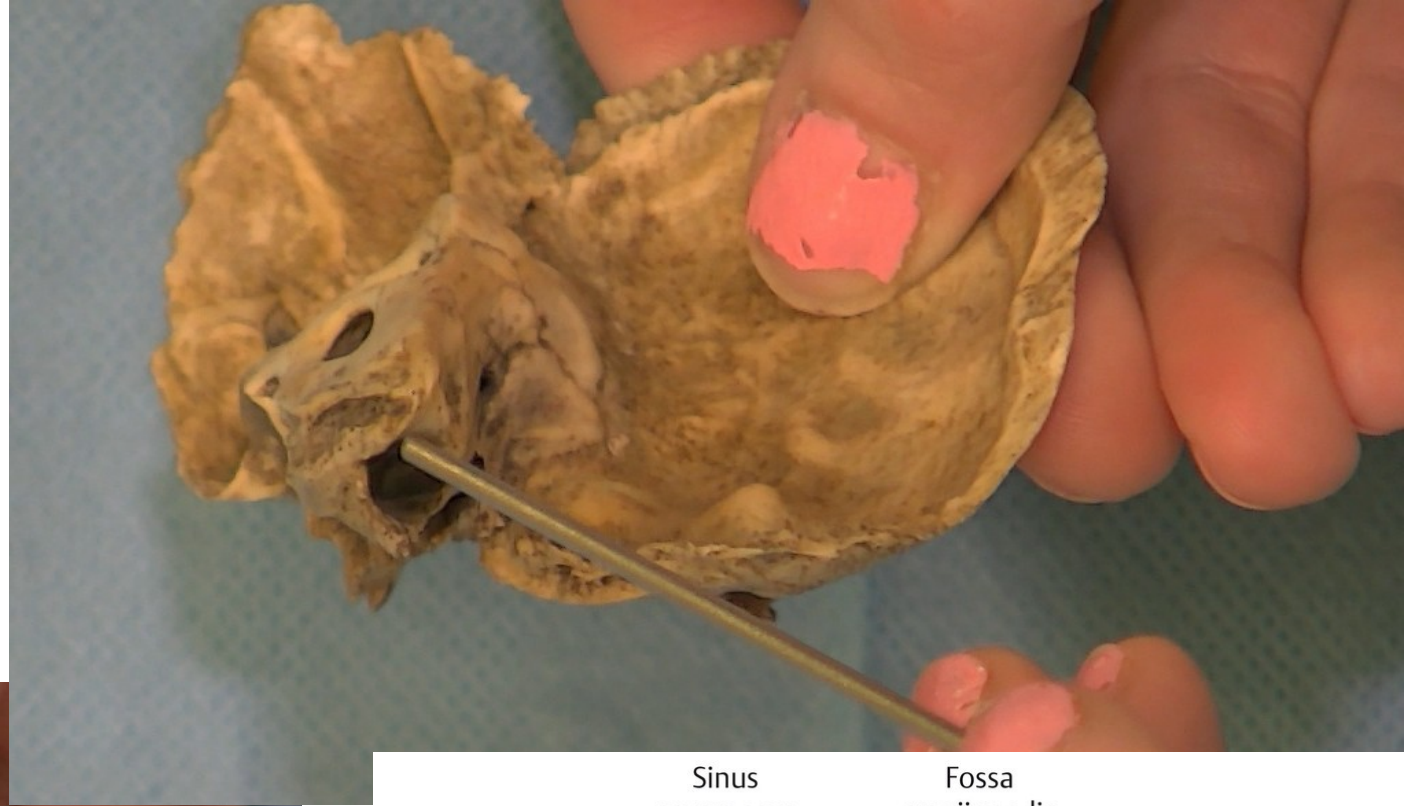




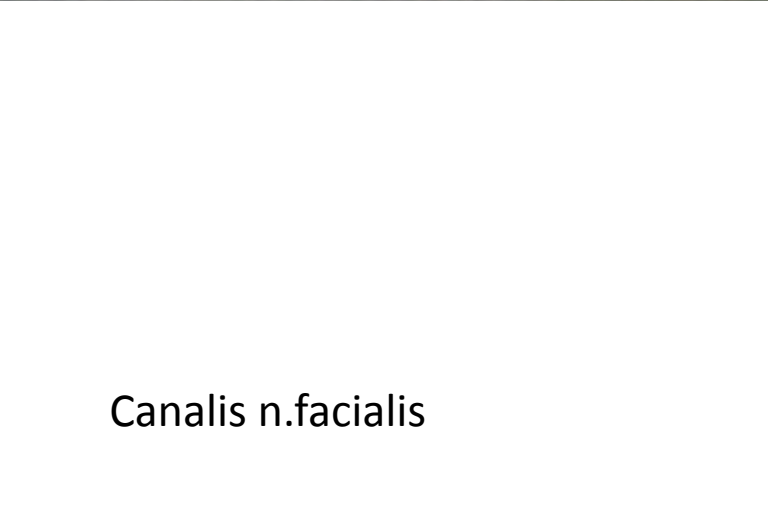
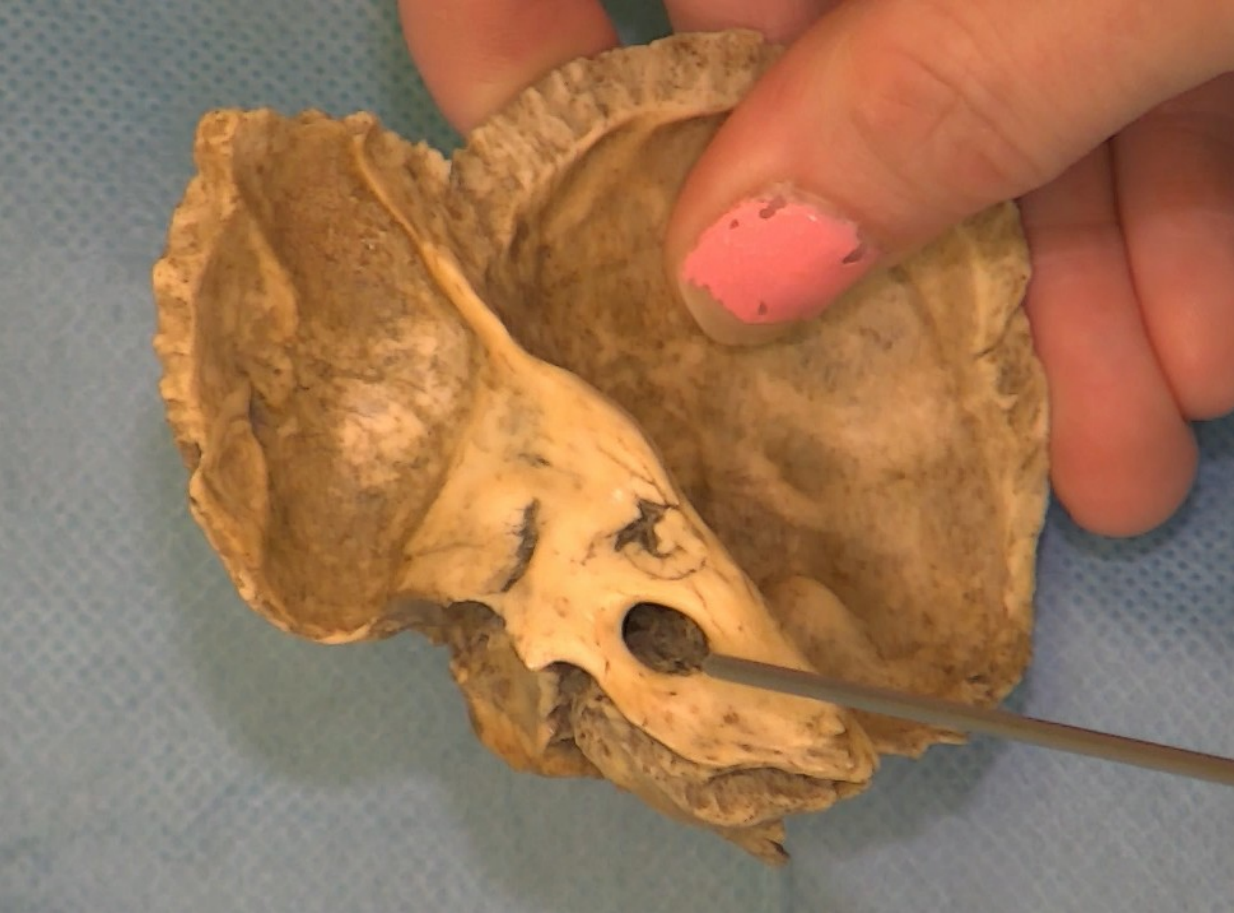




# Canalis caroticus



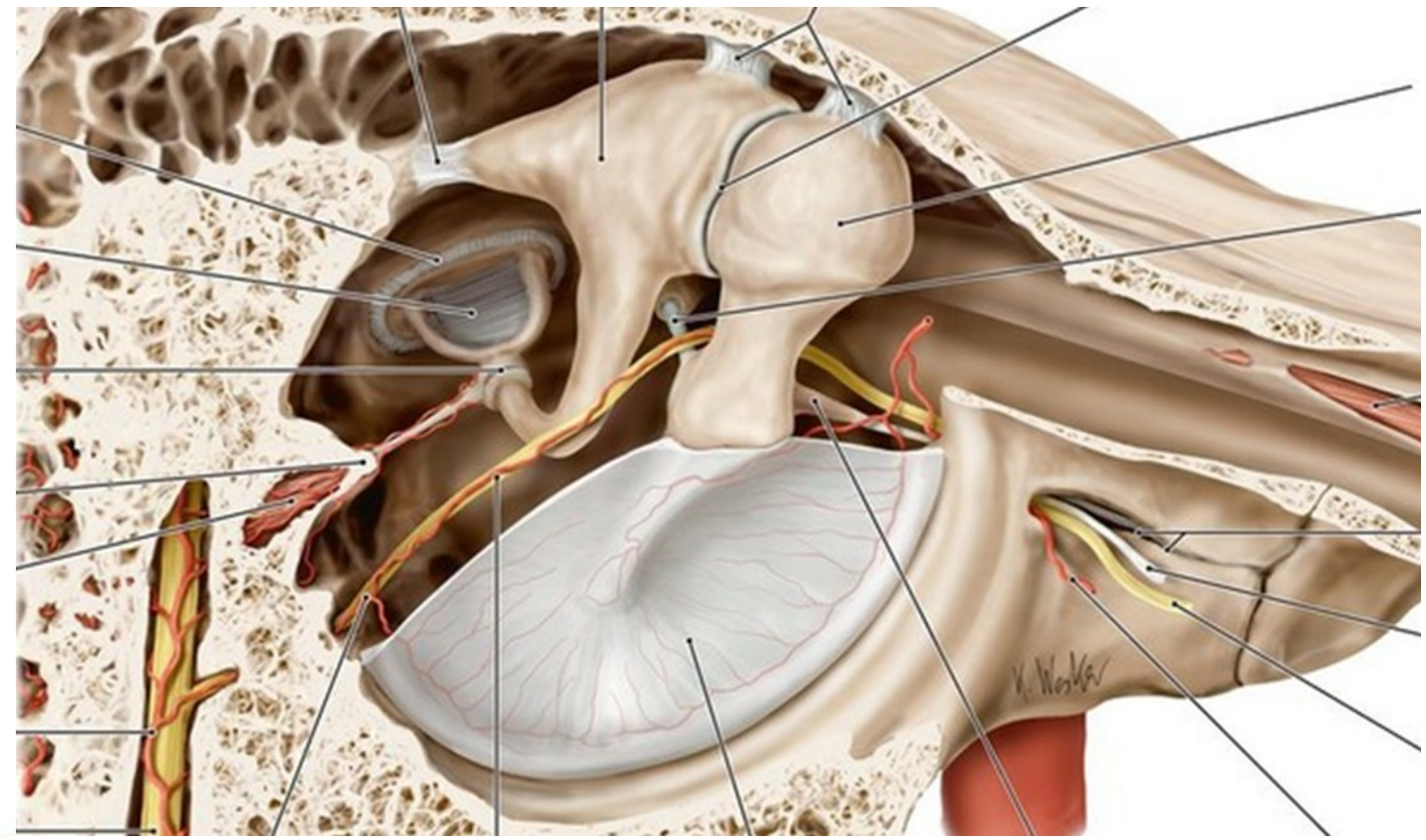
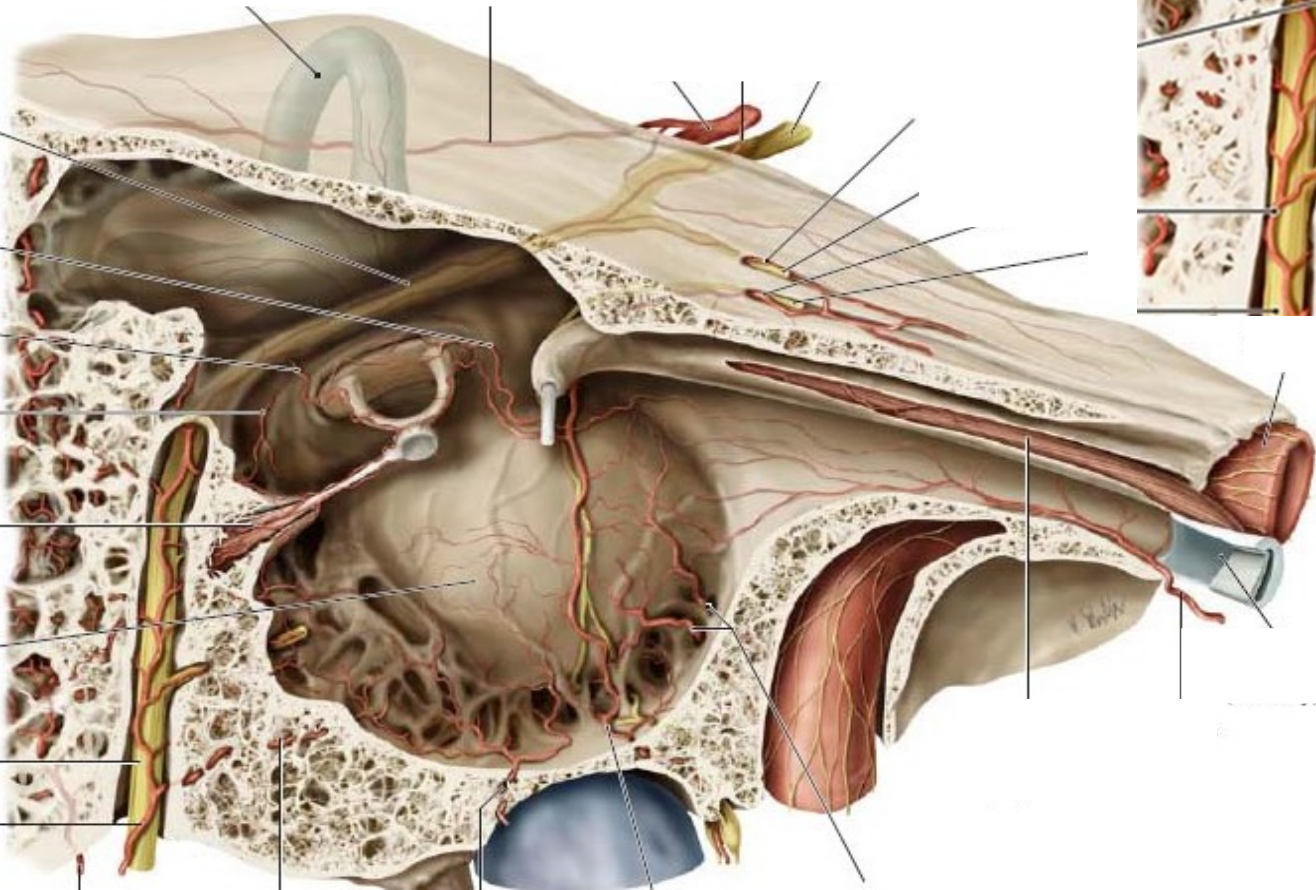




Canalis n.facialis

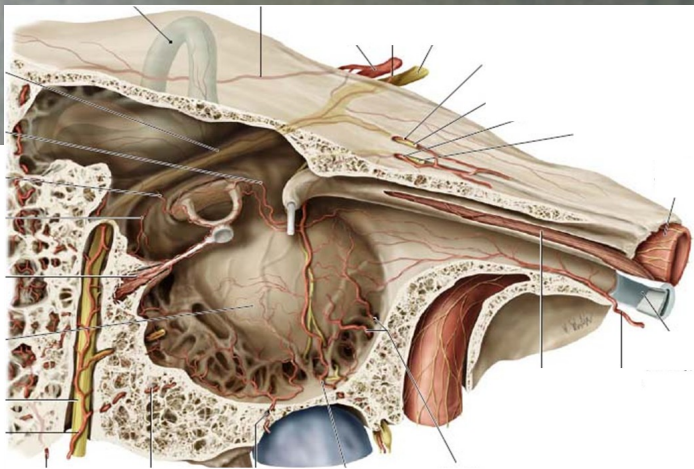
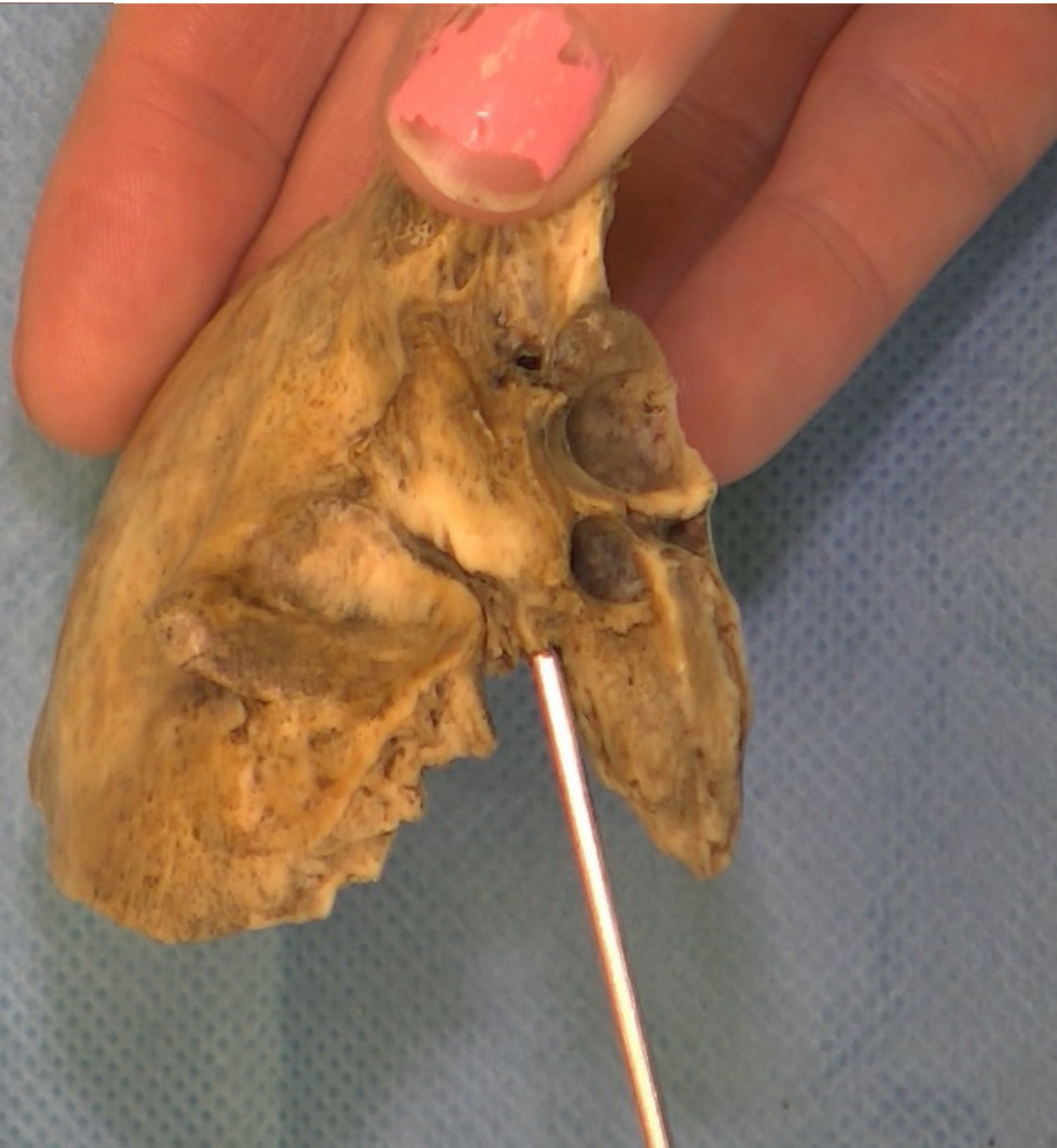


# Canalis chordae tympani





Canalis musculotubarius



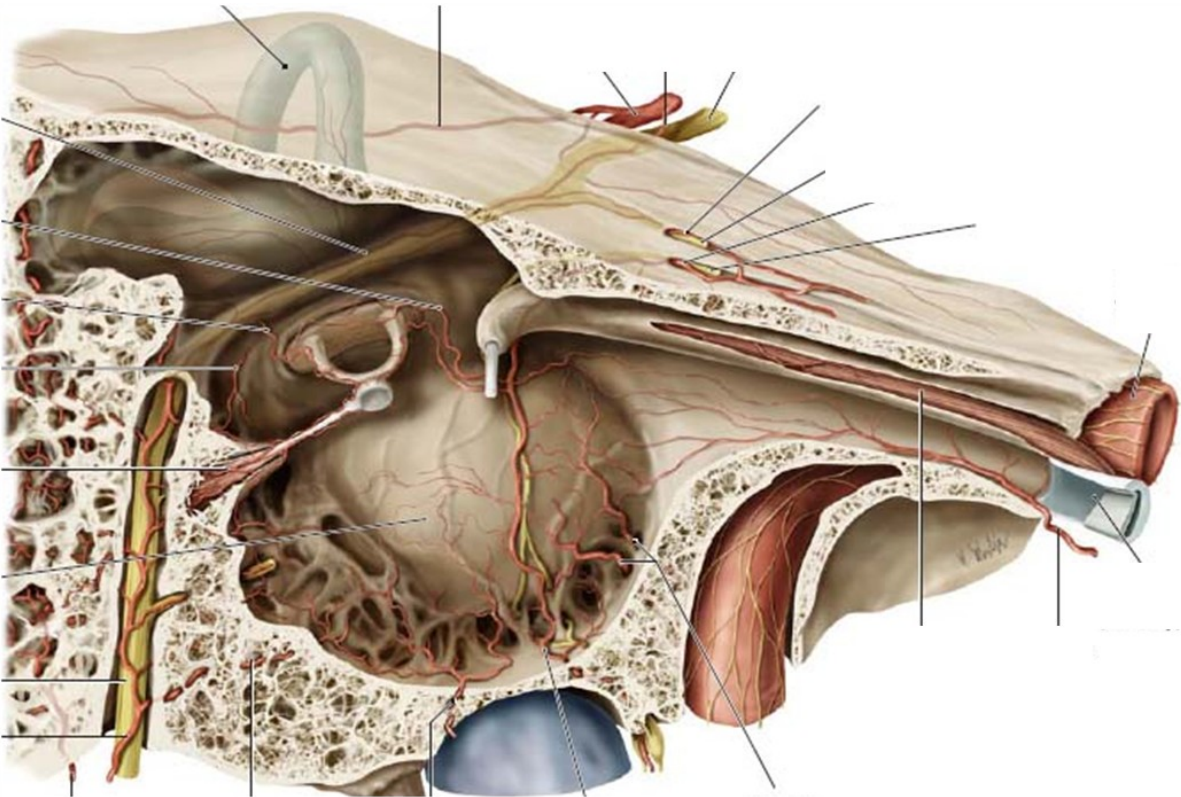


Canaliculus matoideus





Canaliculus tympanicus





Apertura externa canaliculi cochlae





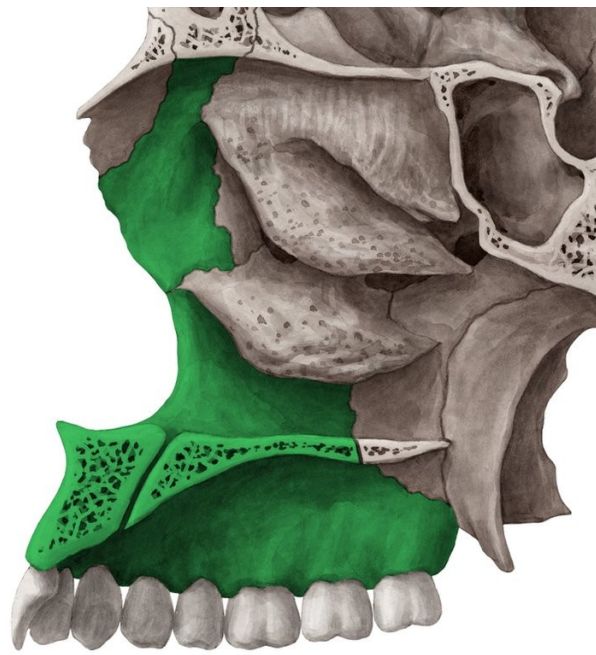
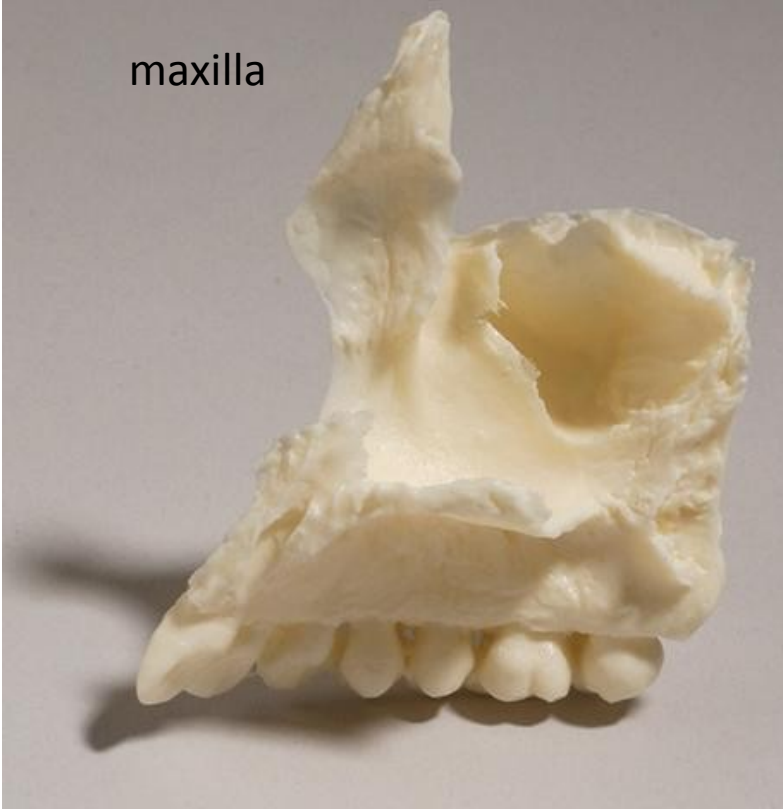
Apertura externa aqueductus vestibuli



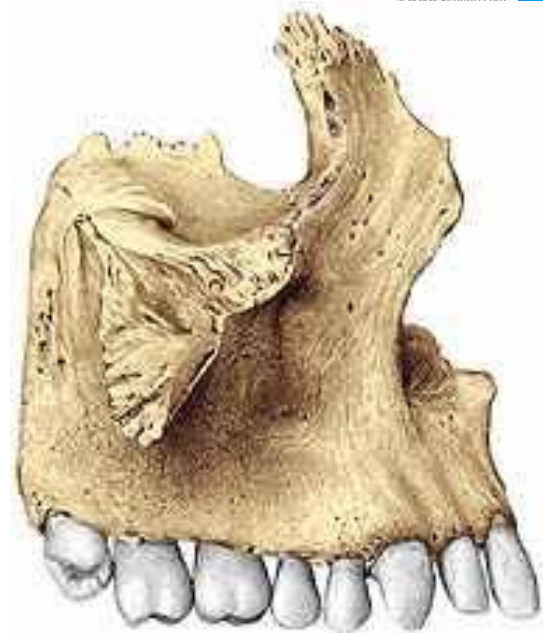
**SPLANCHNOCRANIUM**



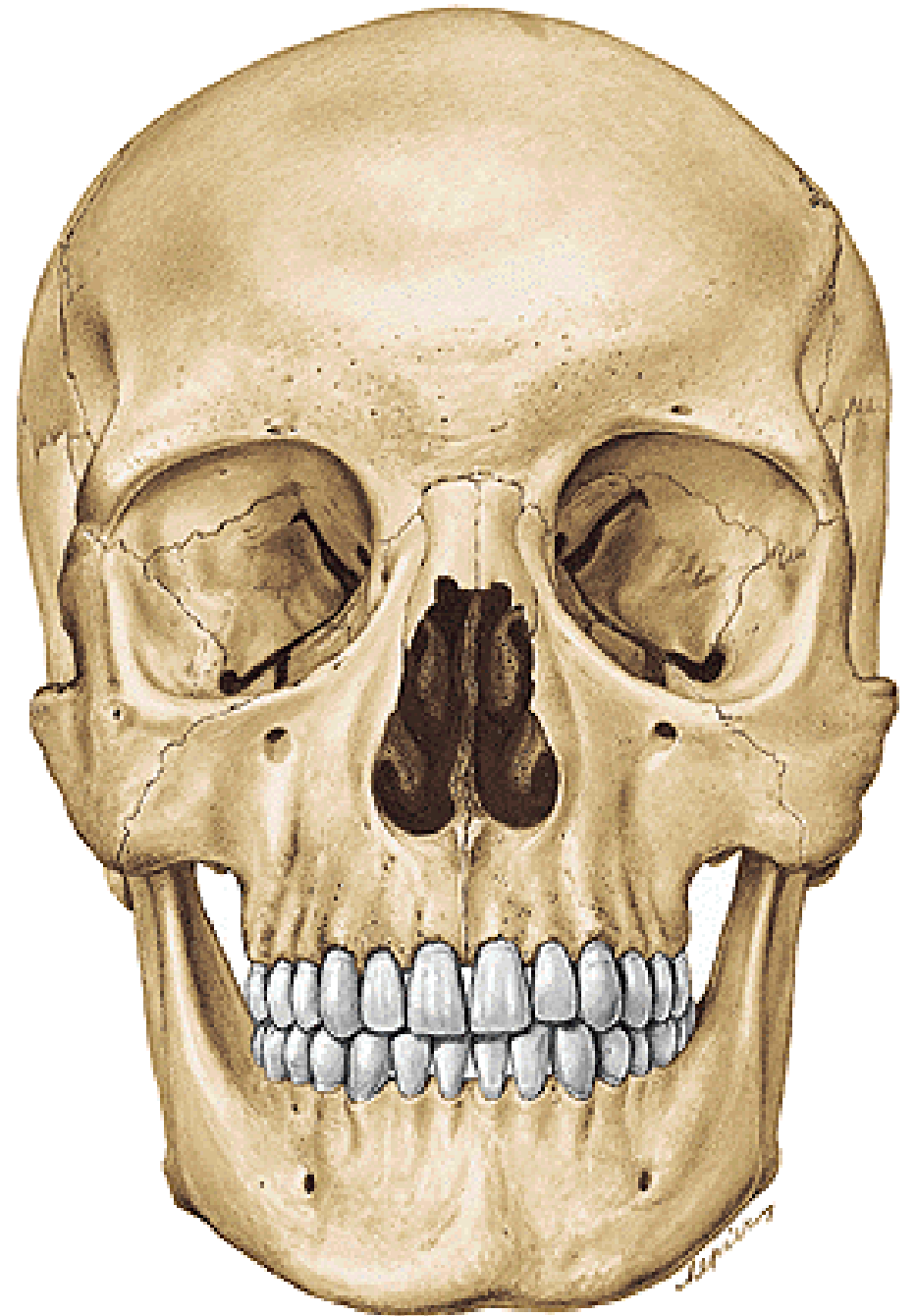
maxilla



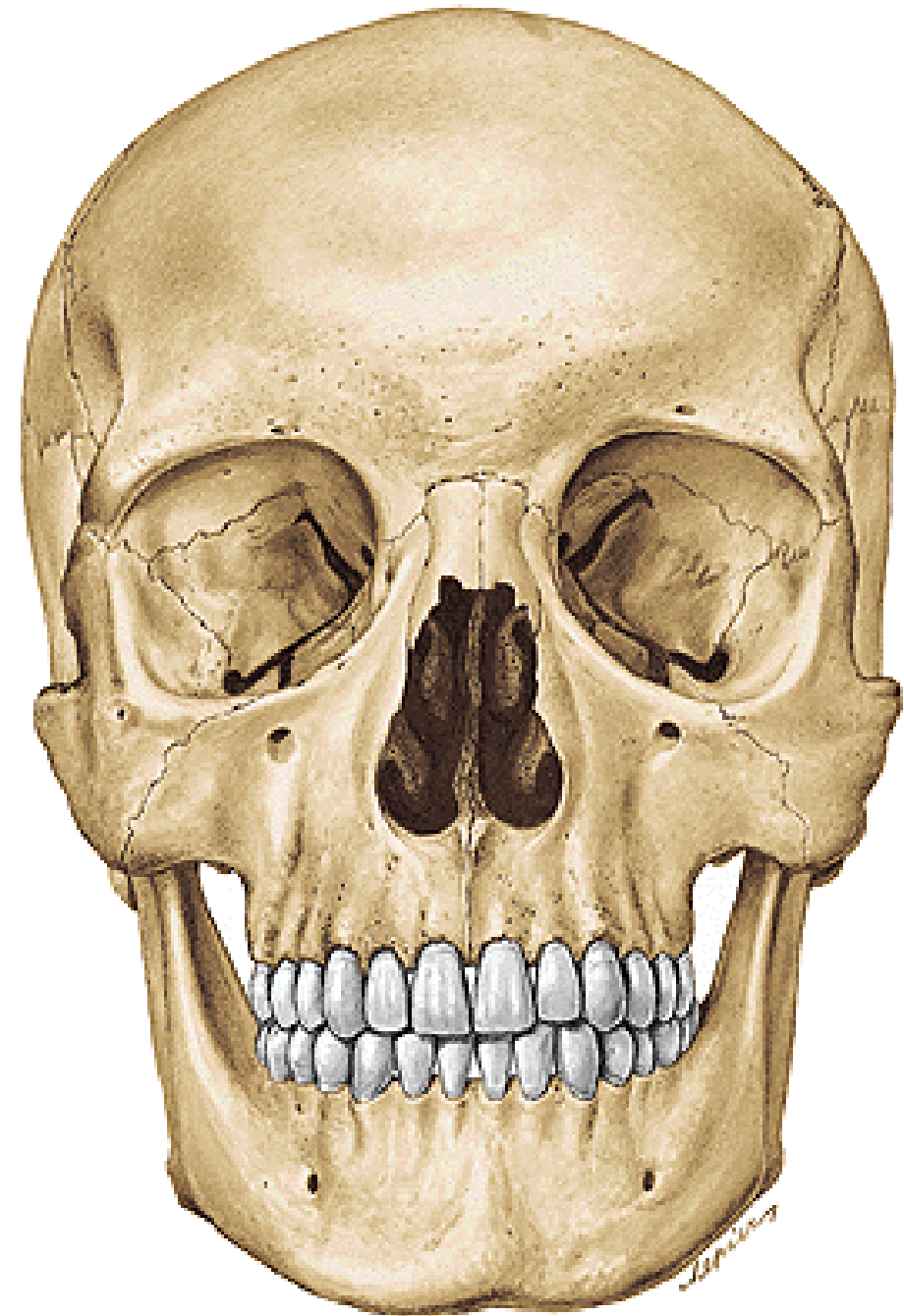
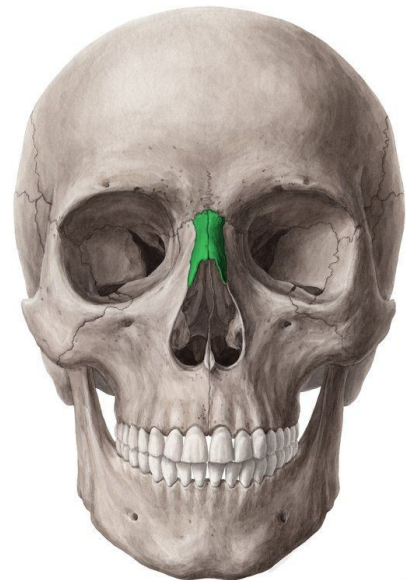
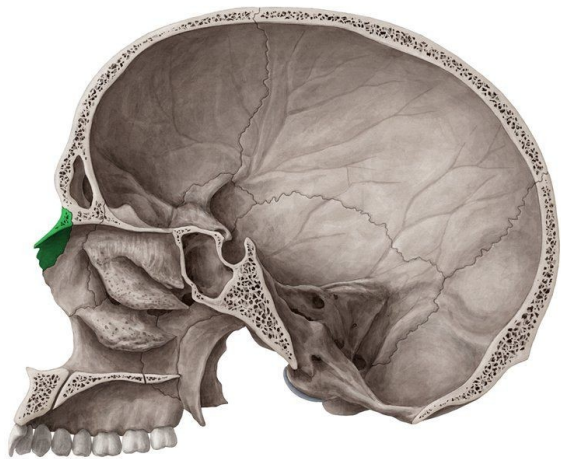
KEN HUB  
© www.kenhub.com



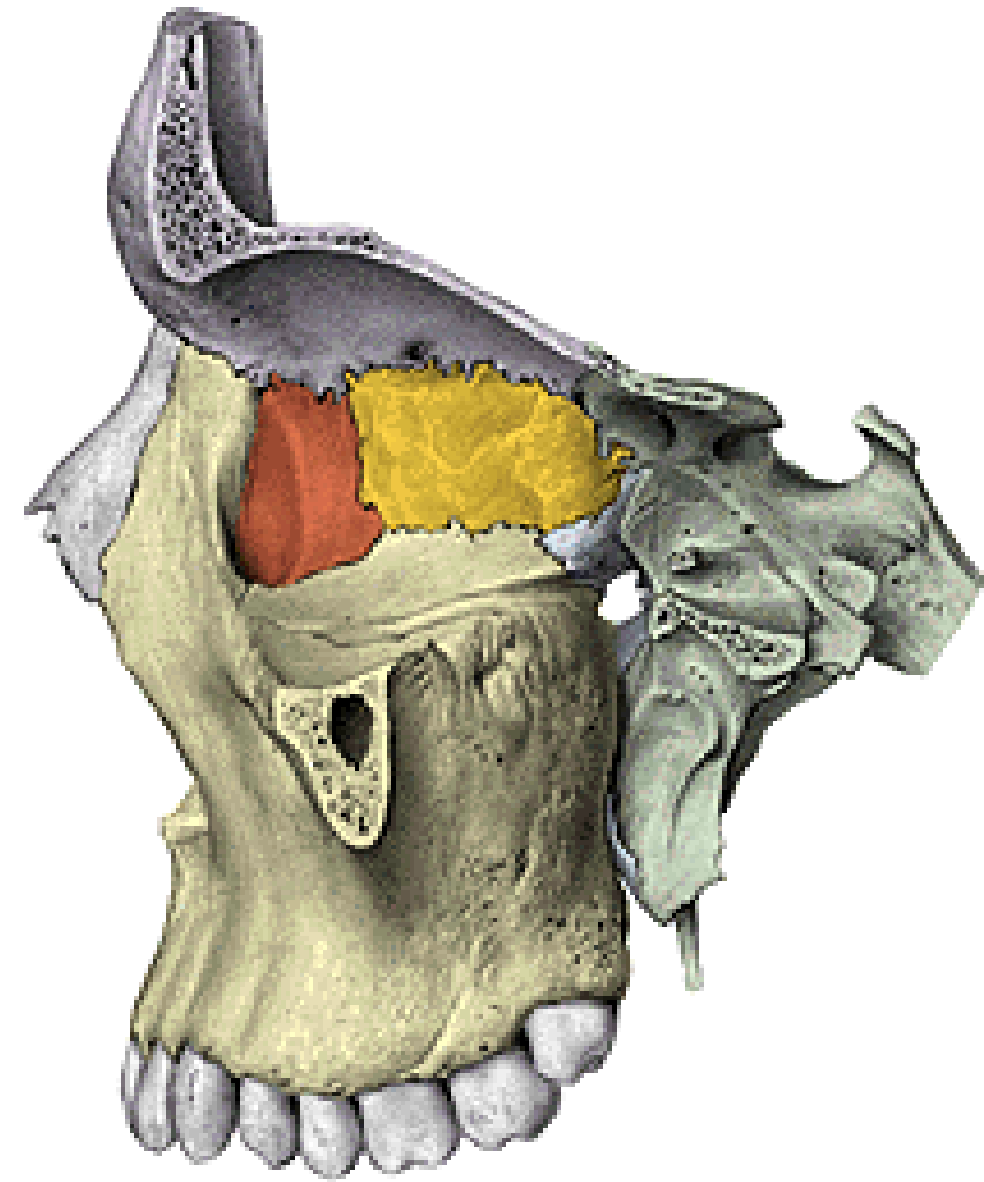
KEN HUB  
© www.kenhub.com



os nasale



os lacrimale





os zygomaticum



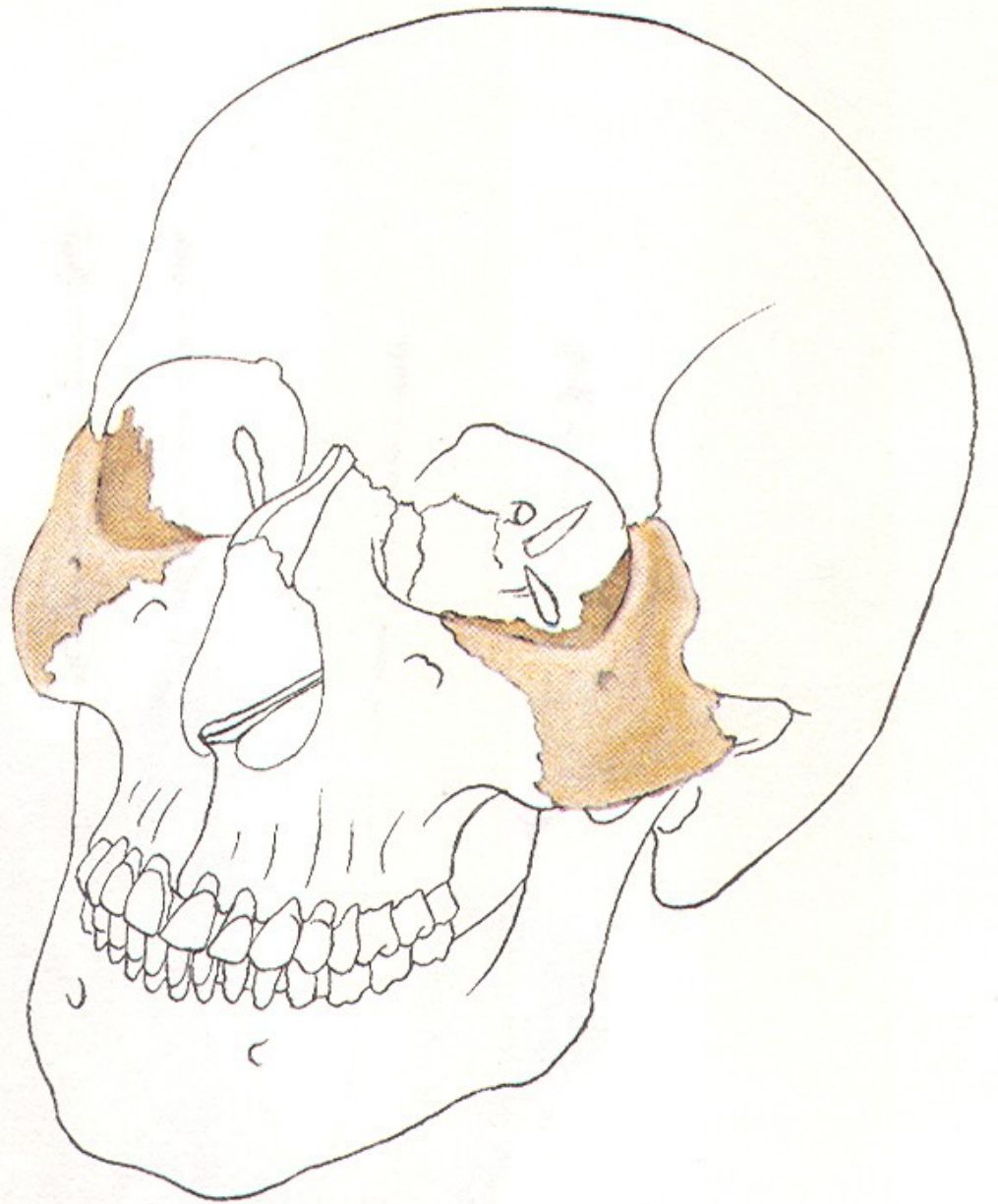
© www.kenhub.com

KEN  
HUB



© www.kenhub.com

KEN  
HUB



mandibula



ANTERIOR



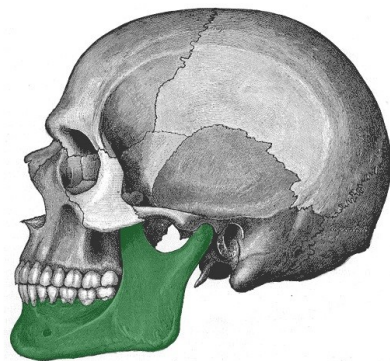
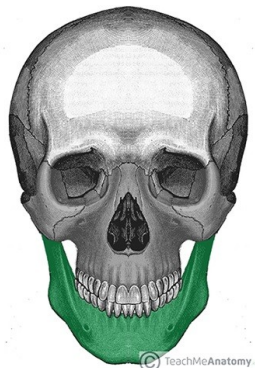
INFERIOR



LATERAL

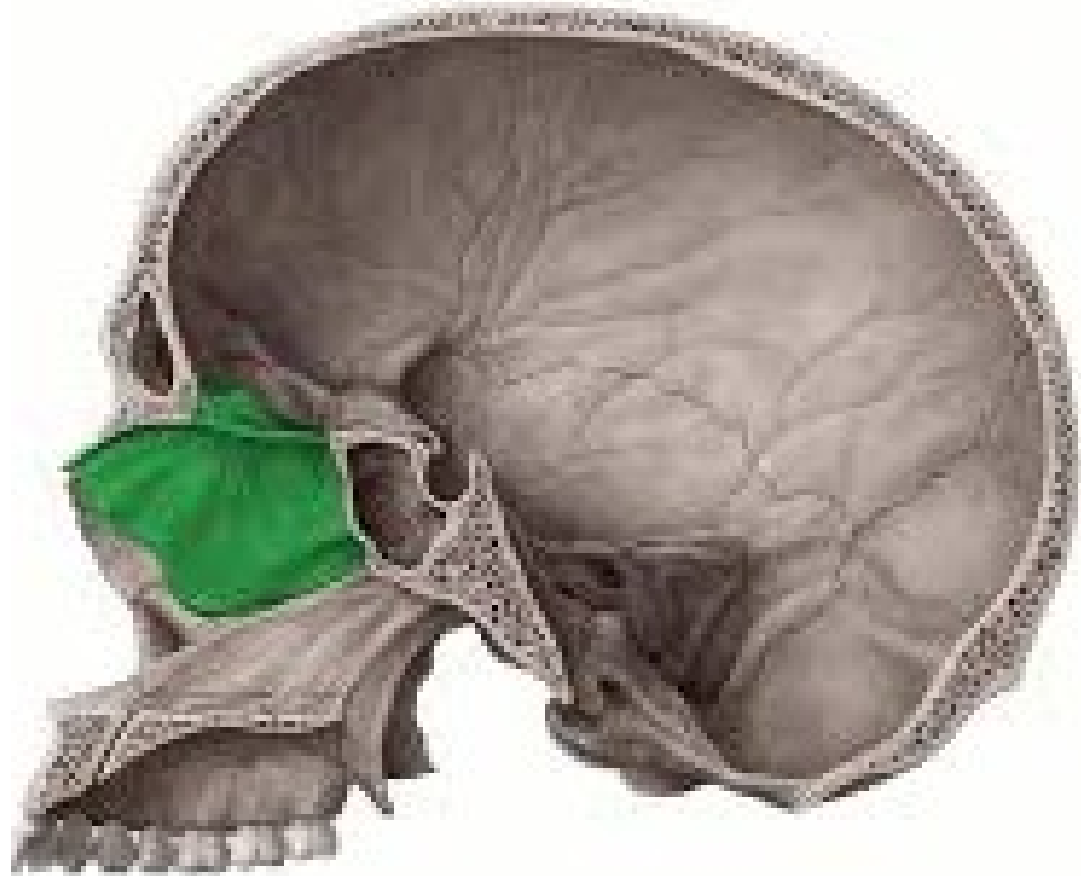


MEDIAN SAGGITAL SECTION

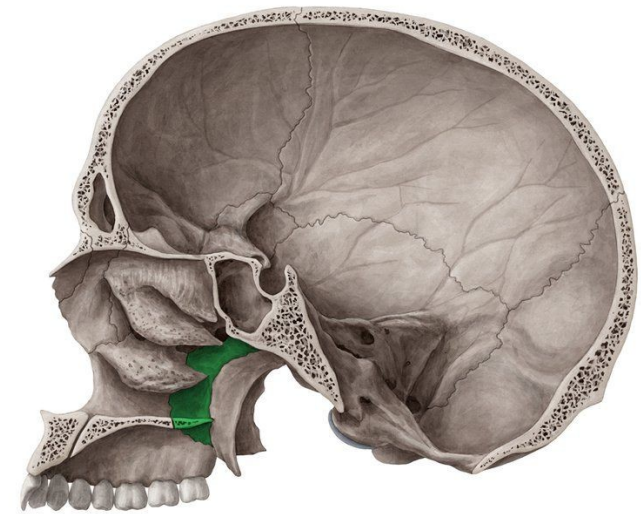
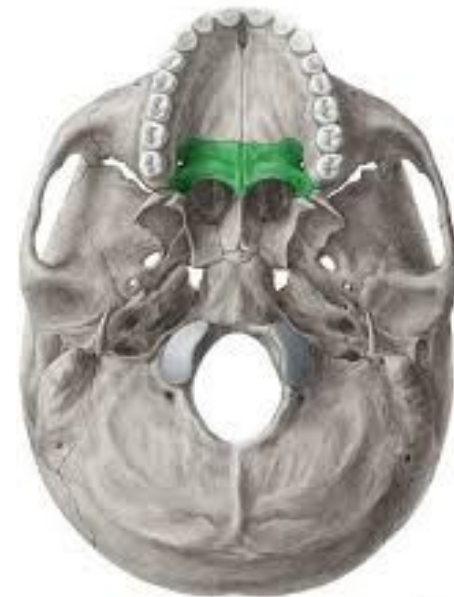
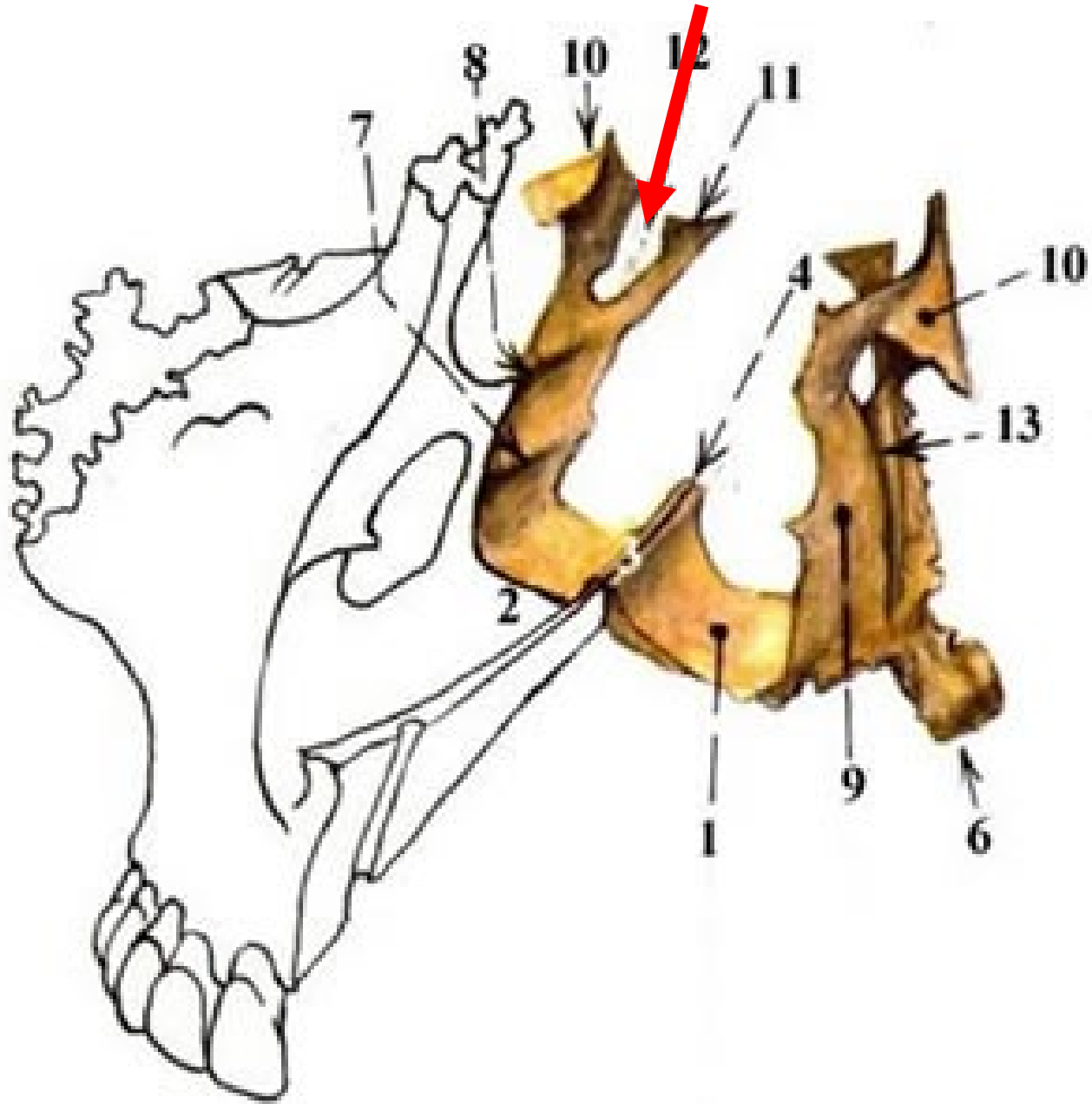




septum nasi\_vomer



os palatinum





concha nasalis inferior

