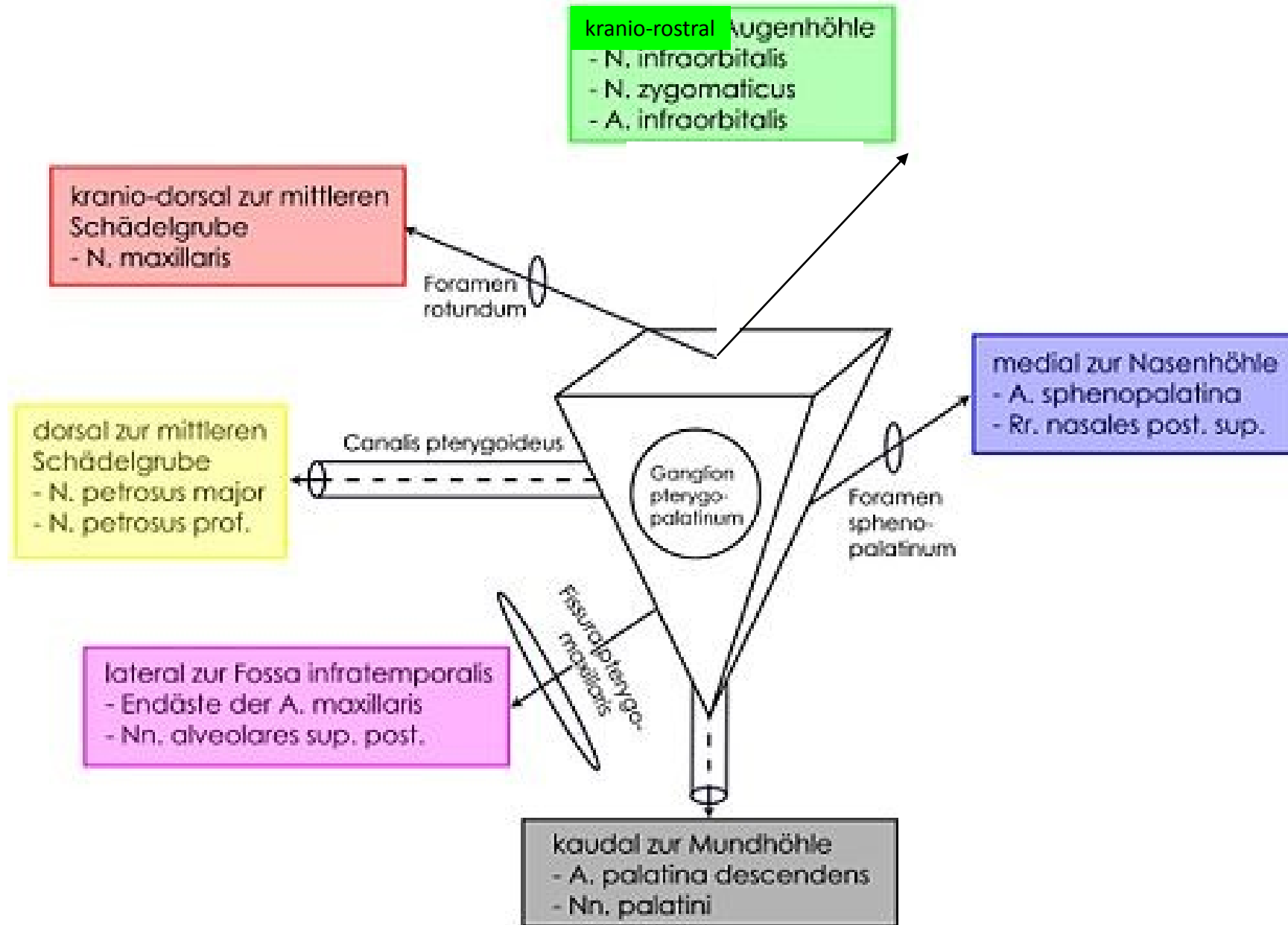
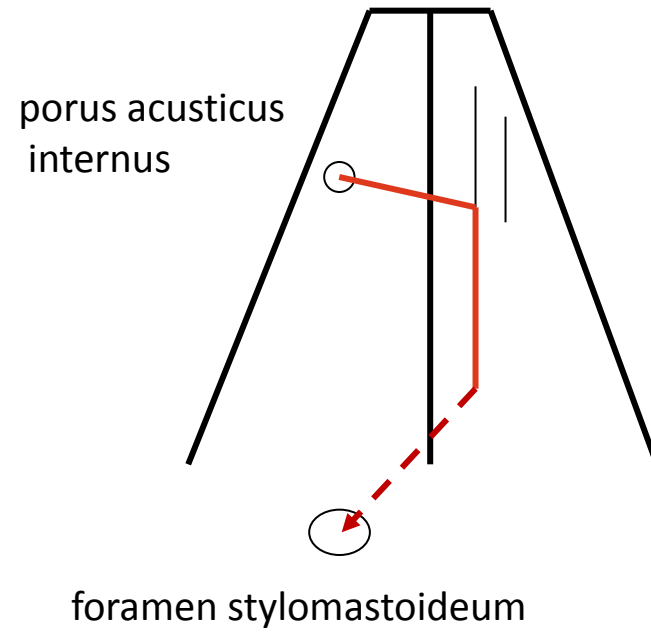


Schemes
head, neck

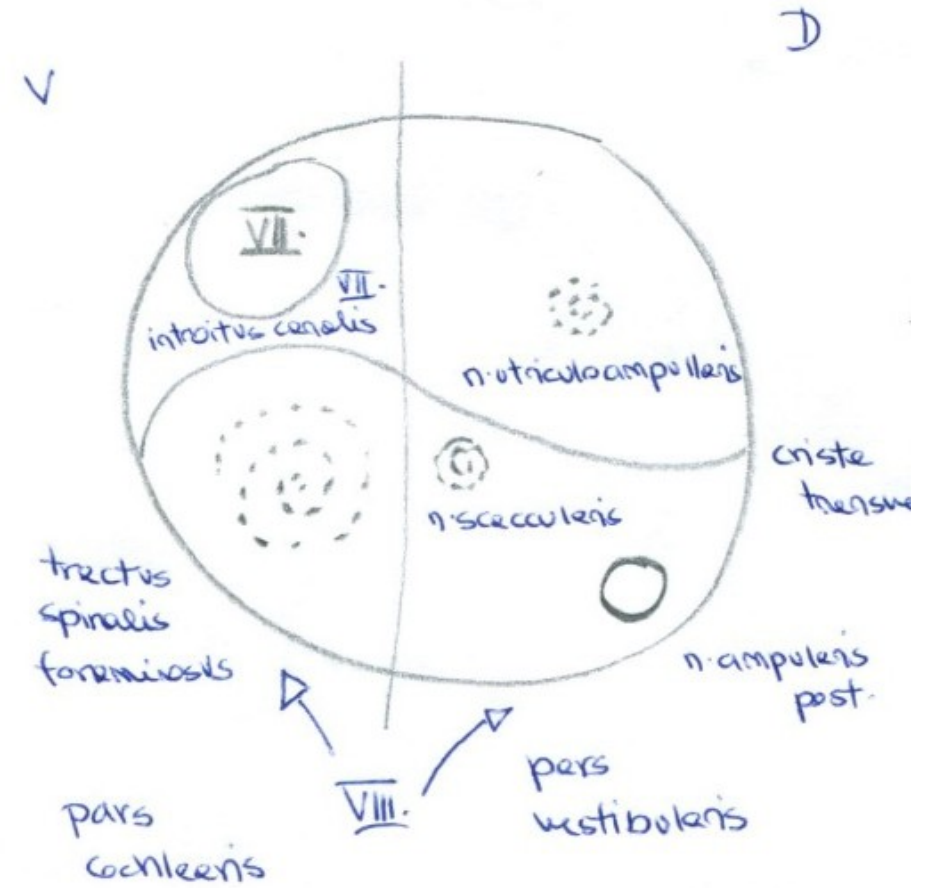
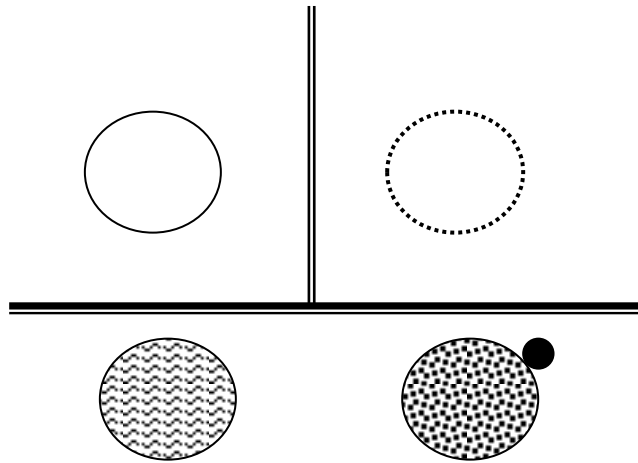
Fossa pterygopalatina



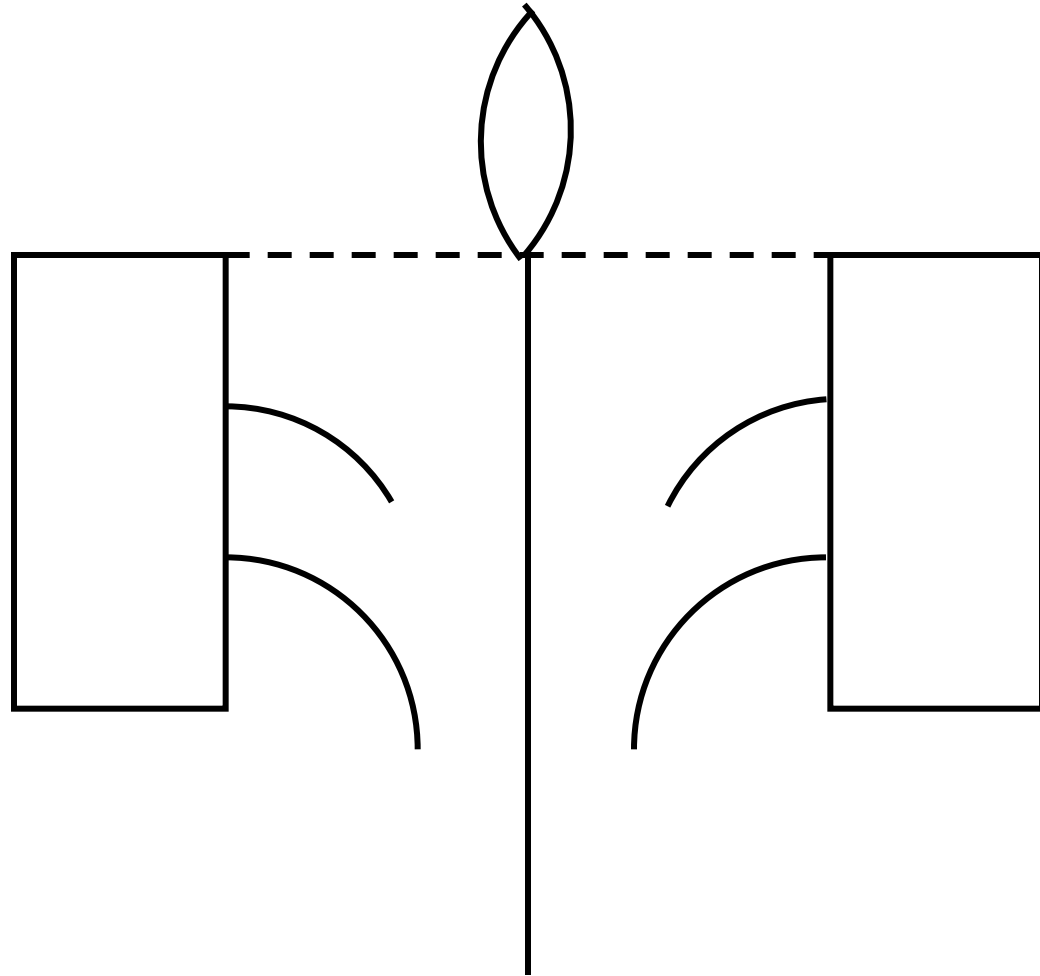
Canalis n. facialis



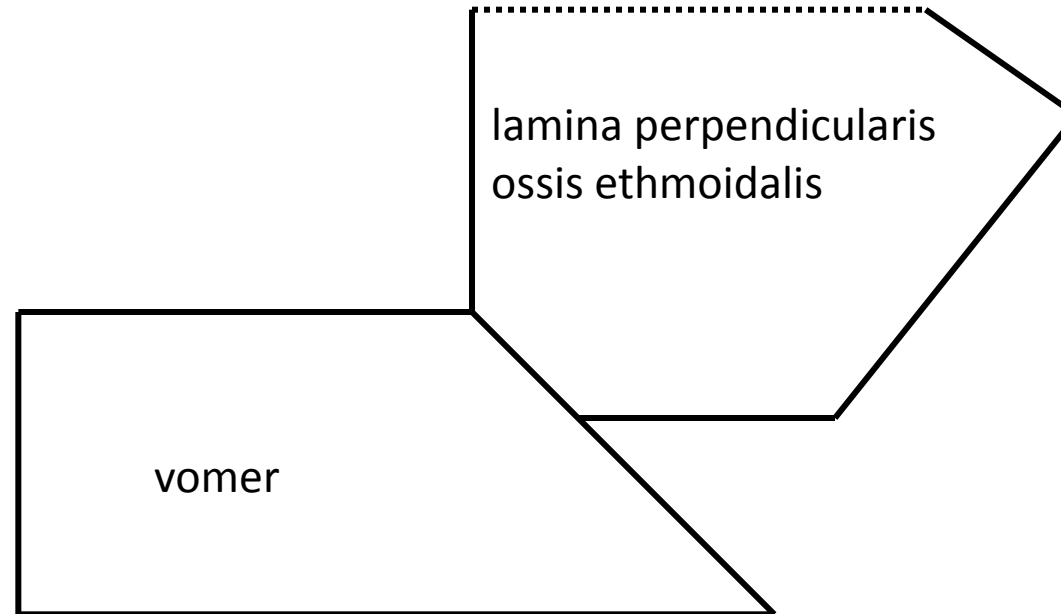
Porus acousticus internus



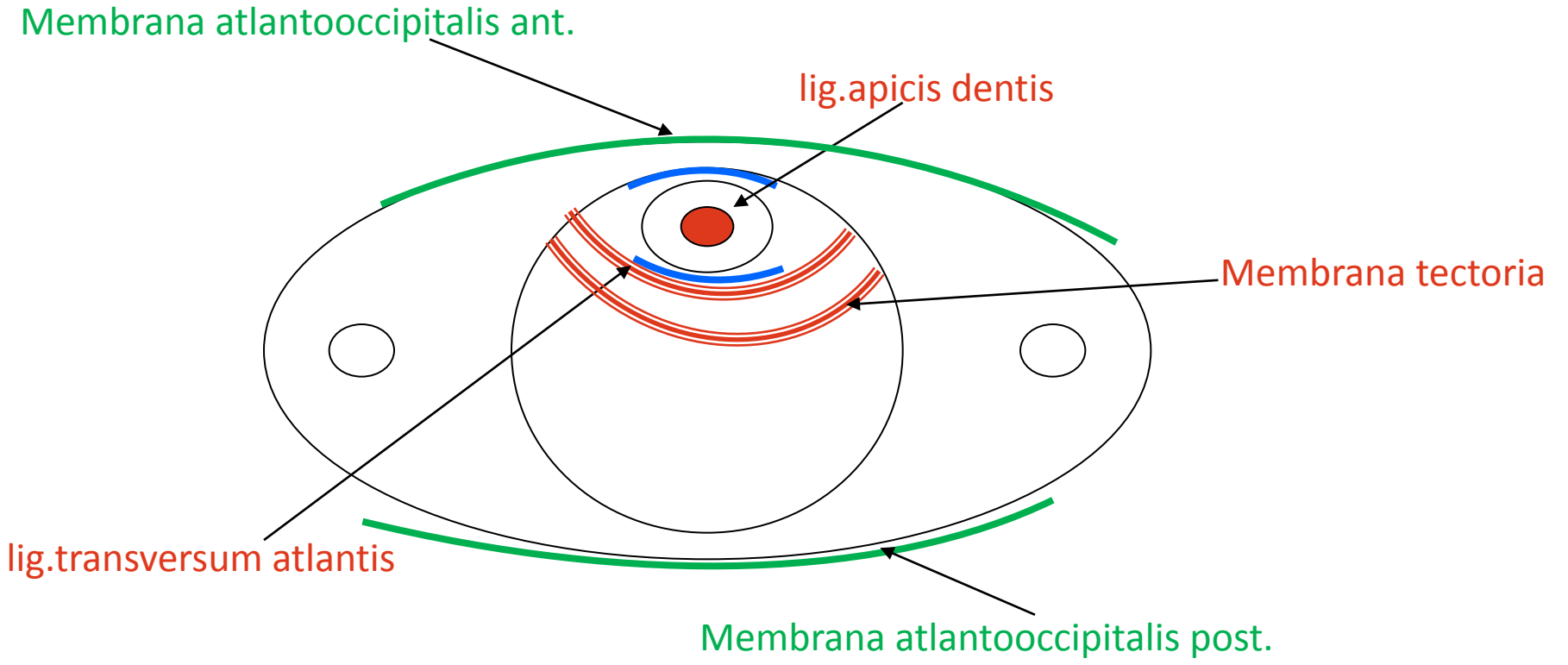
Os ethmoidale

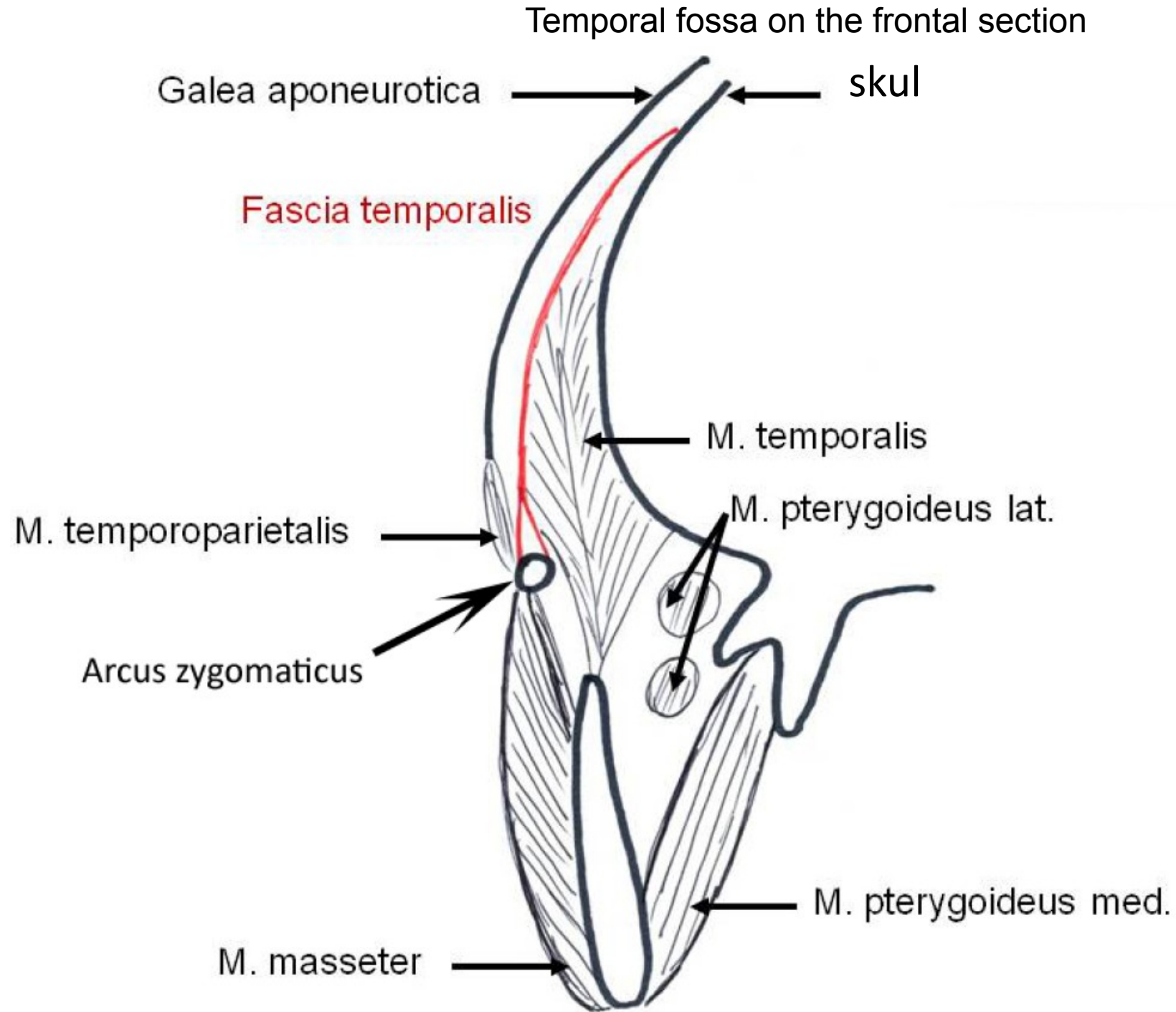


SEPTUM NASI OSSEUM



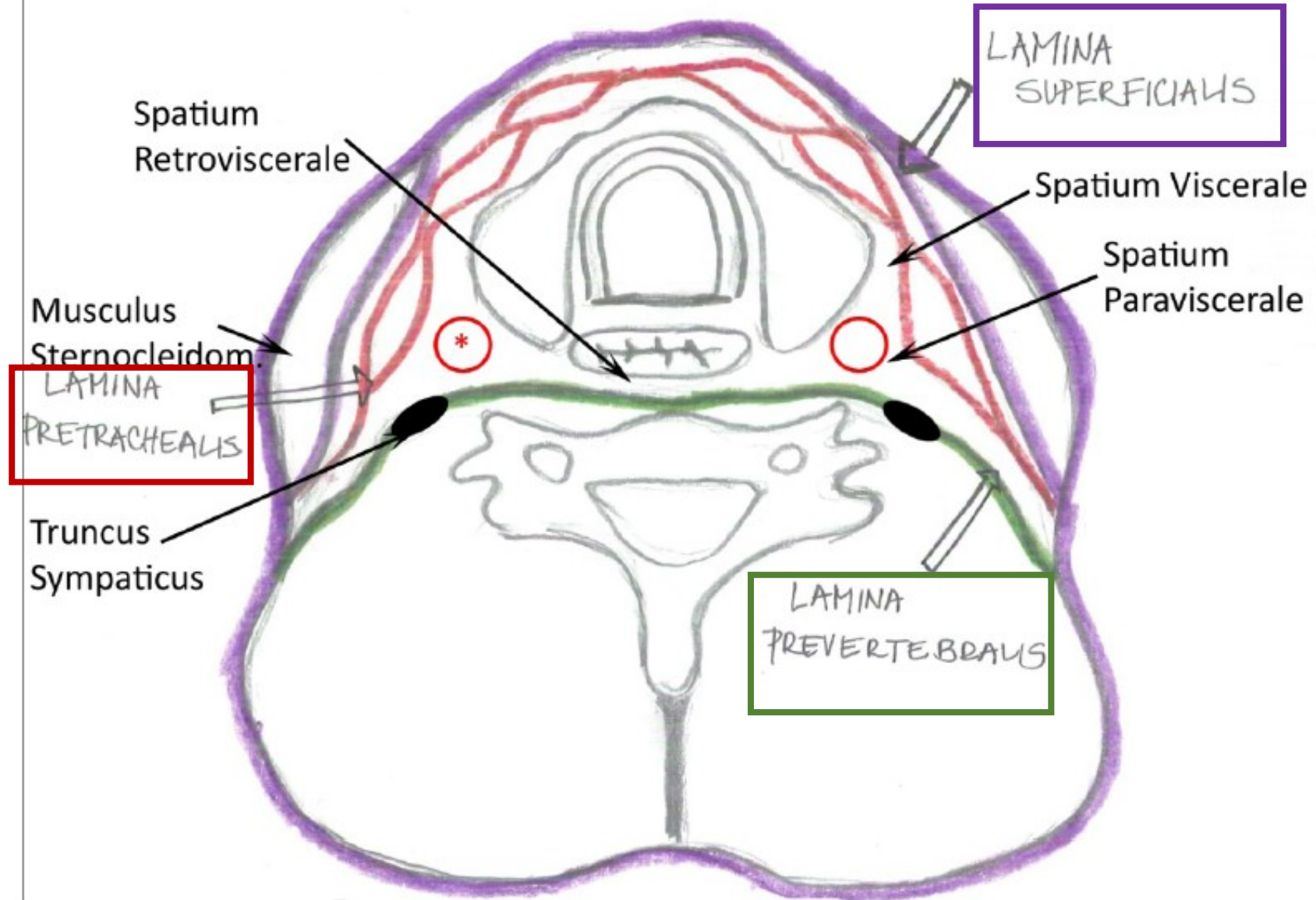
Atlantoaxial connection

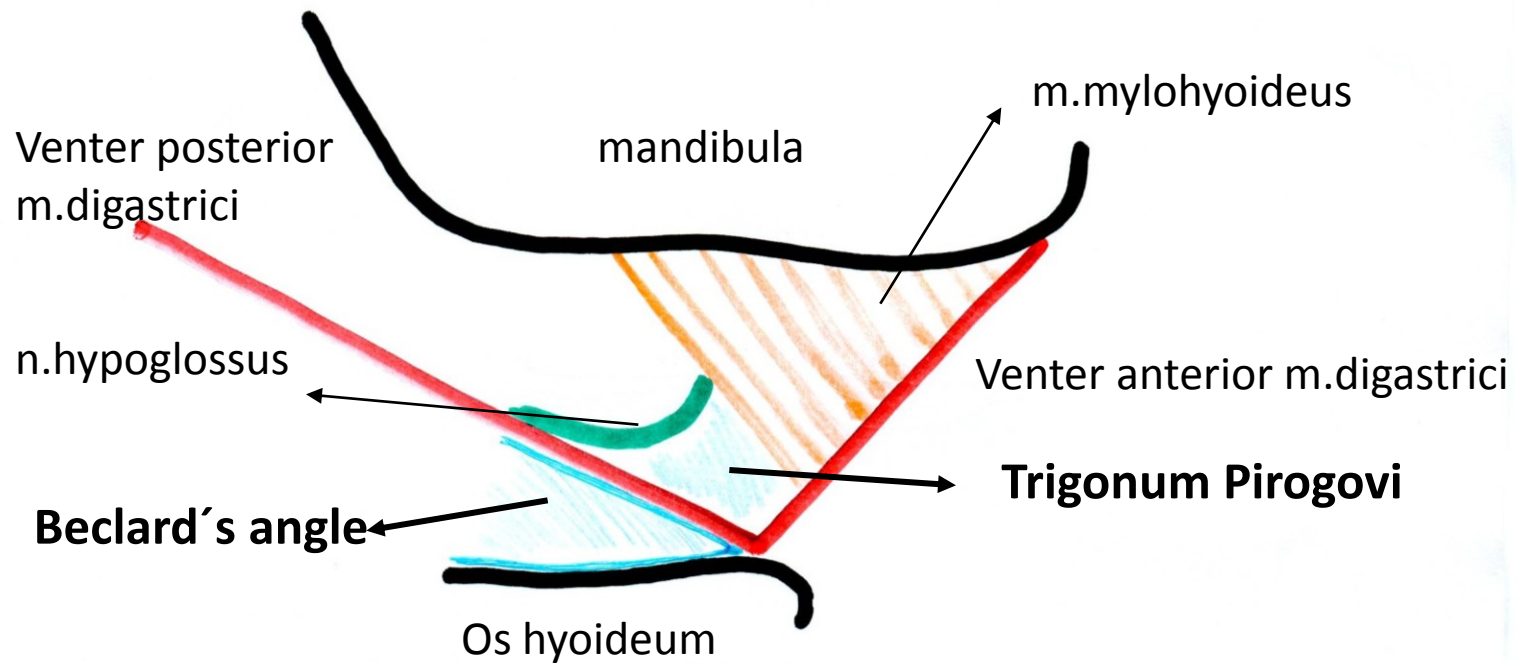
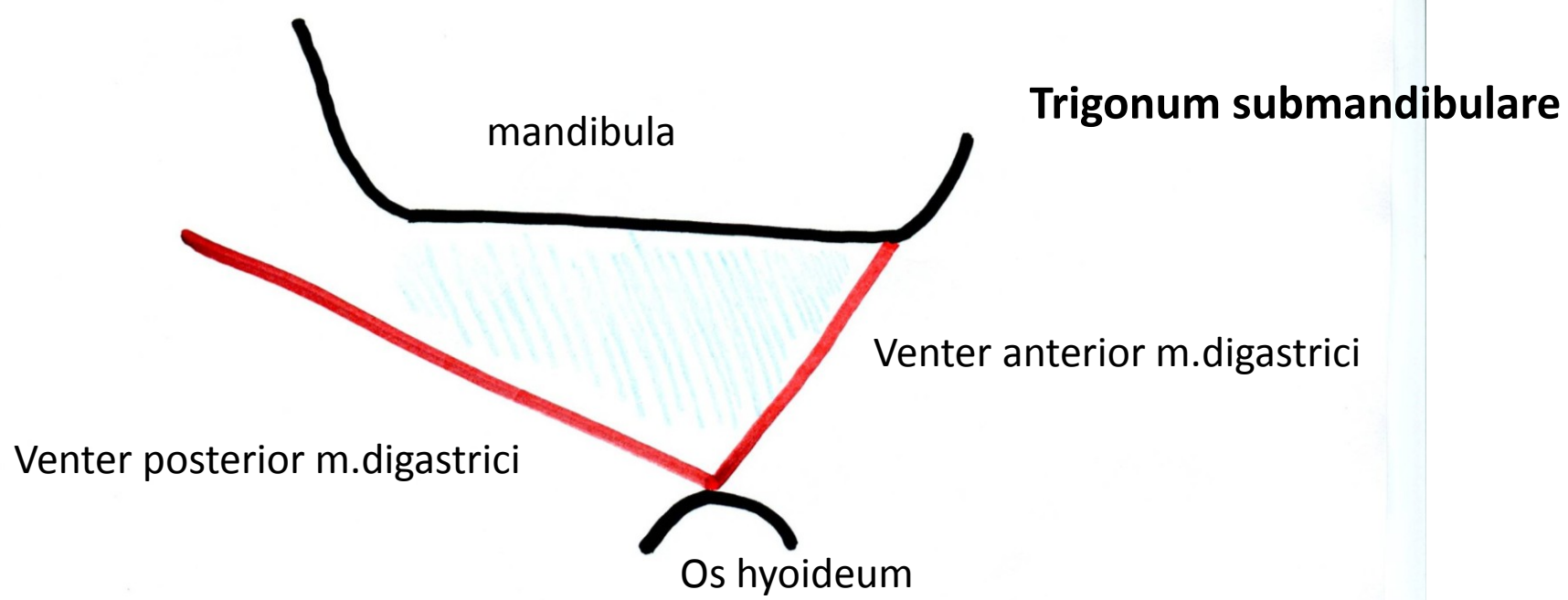




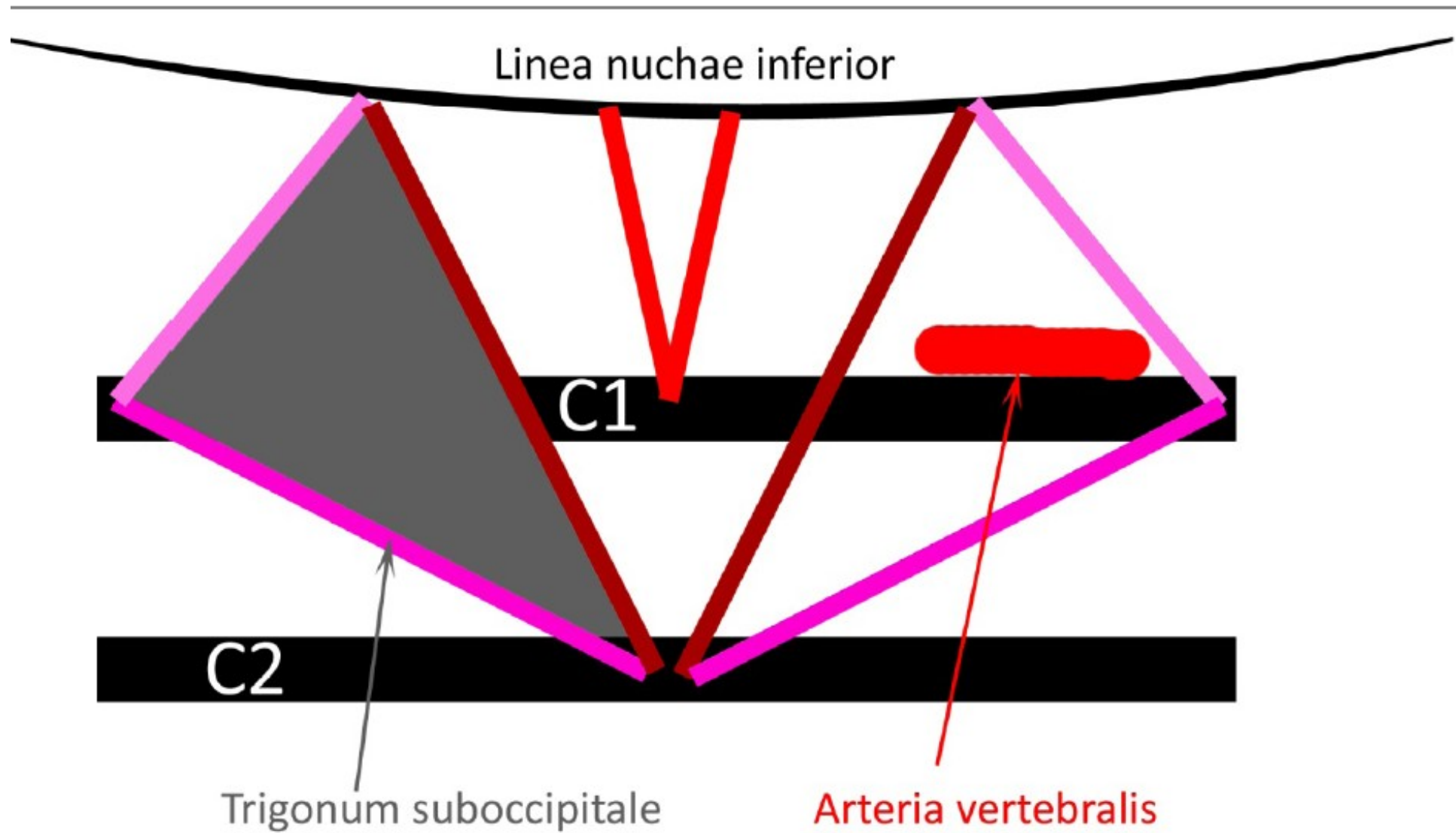
Cervical fascia – transversal section

* A. carotis communis, v. jugularis interna, n. vagus

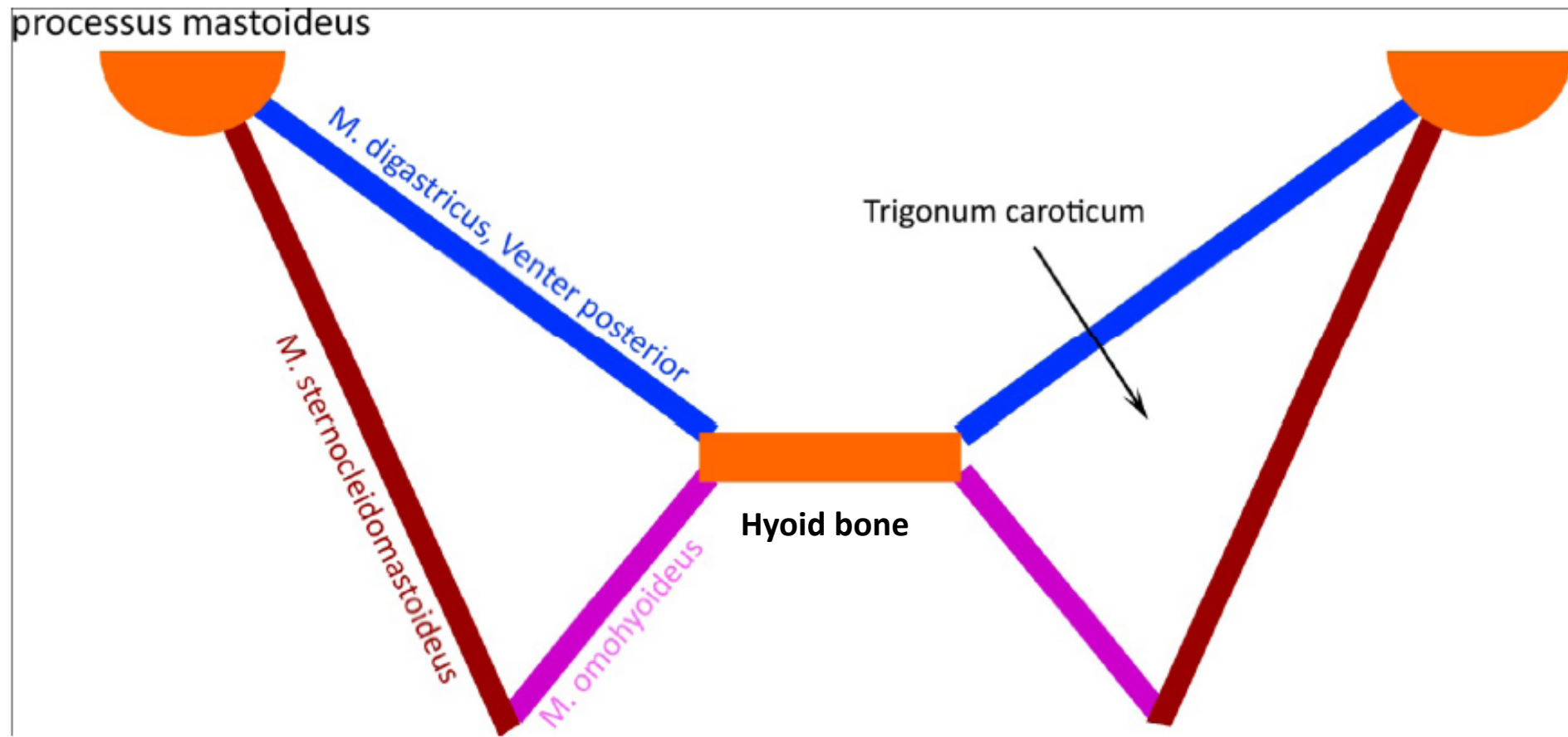


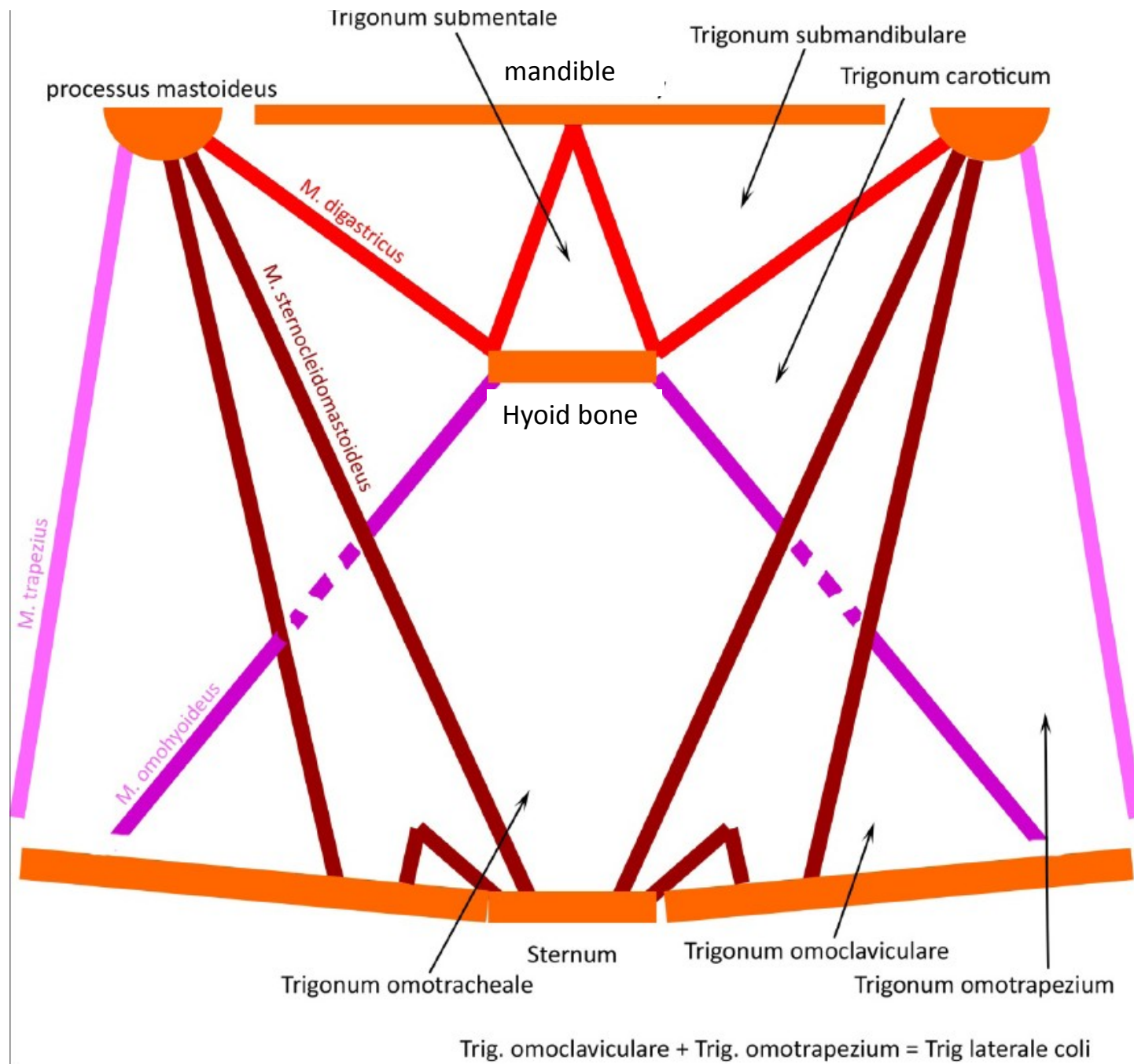


Trigonum suboccipitale

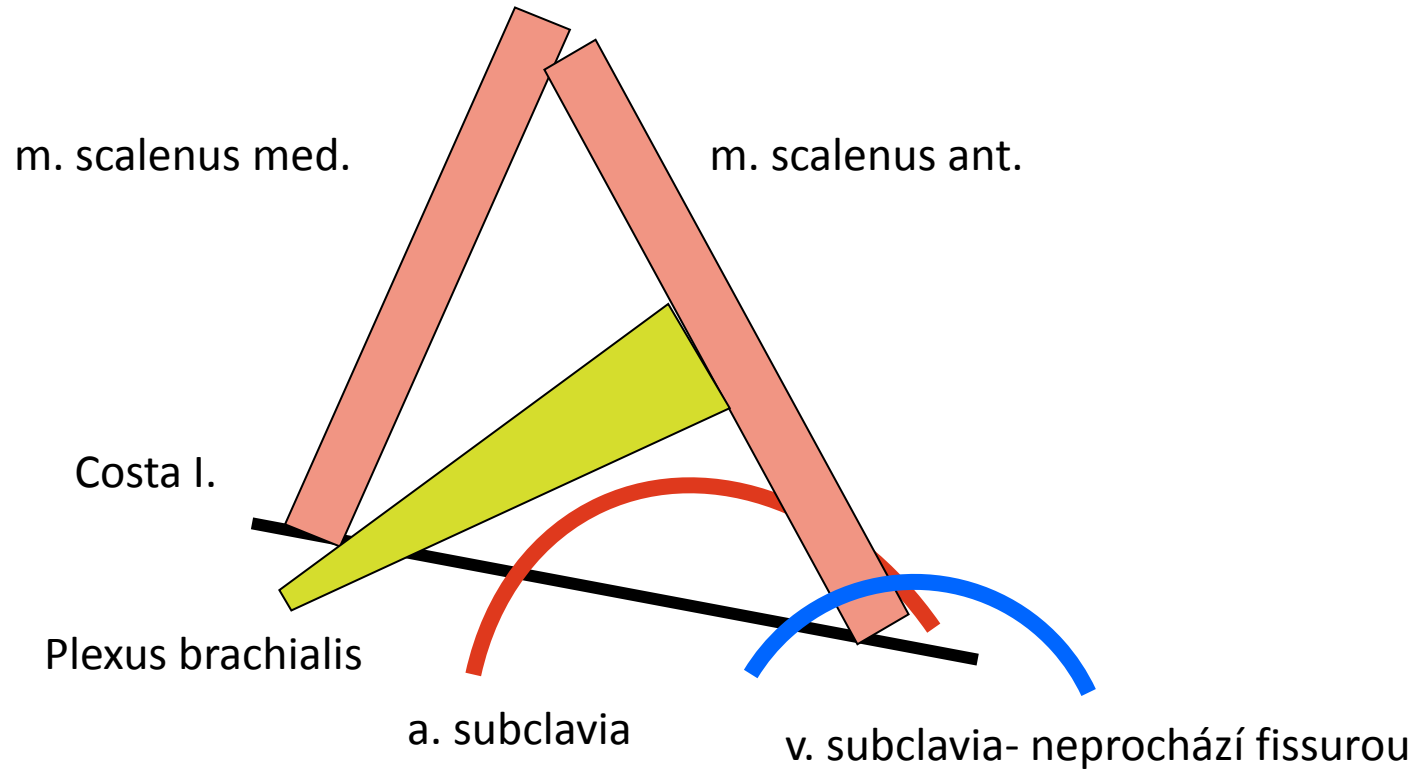


Trigonum caroticum





Fissura scalenorum



Scheme of the NS

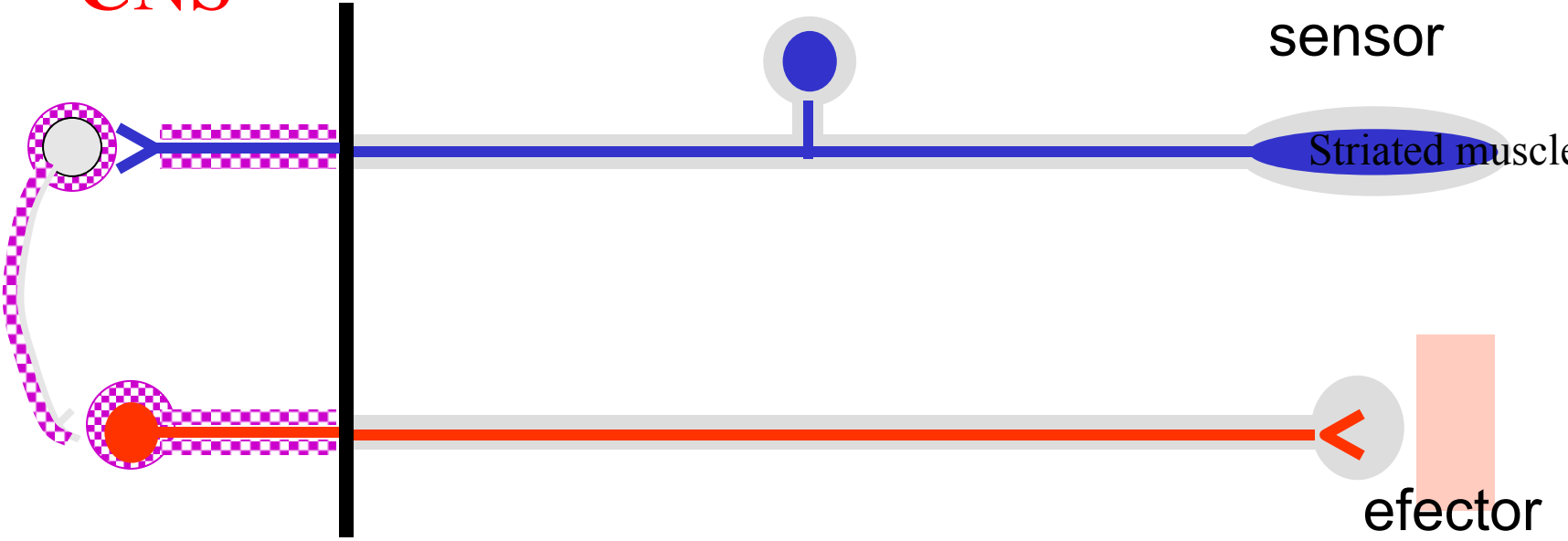
CNS

PNS

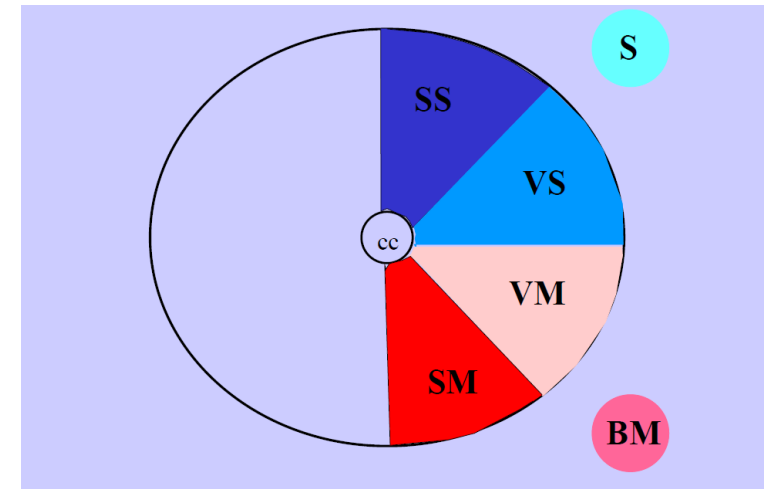
sensor

Striated muscle

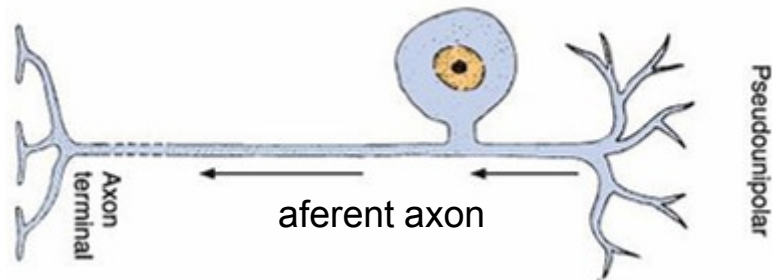
efector



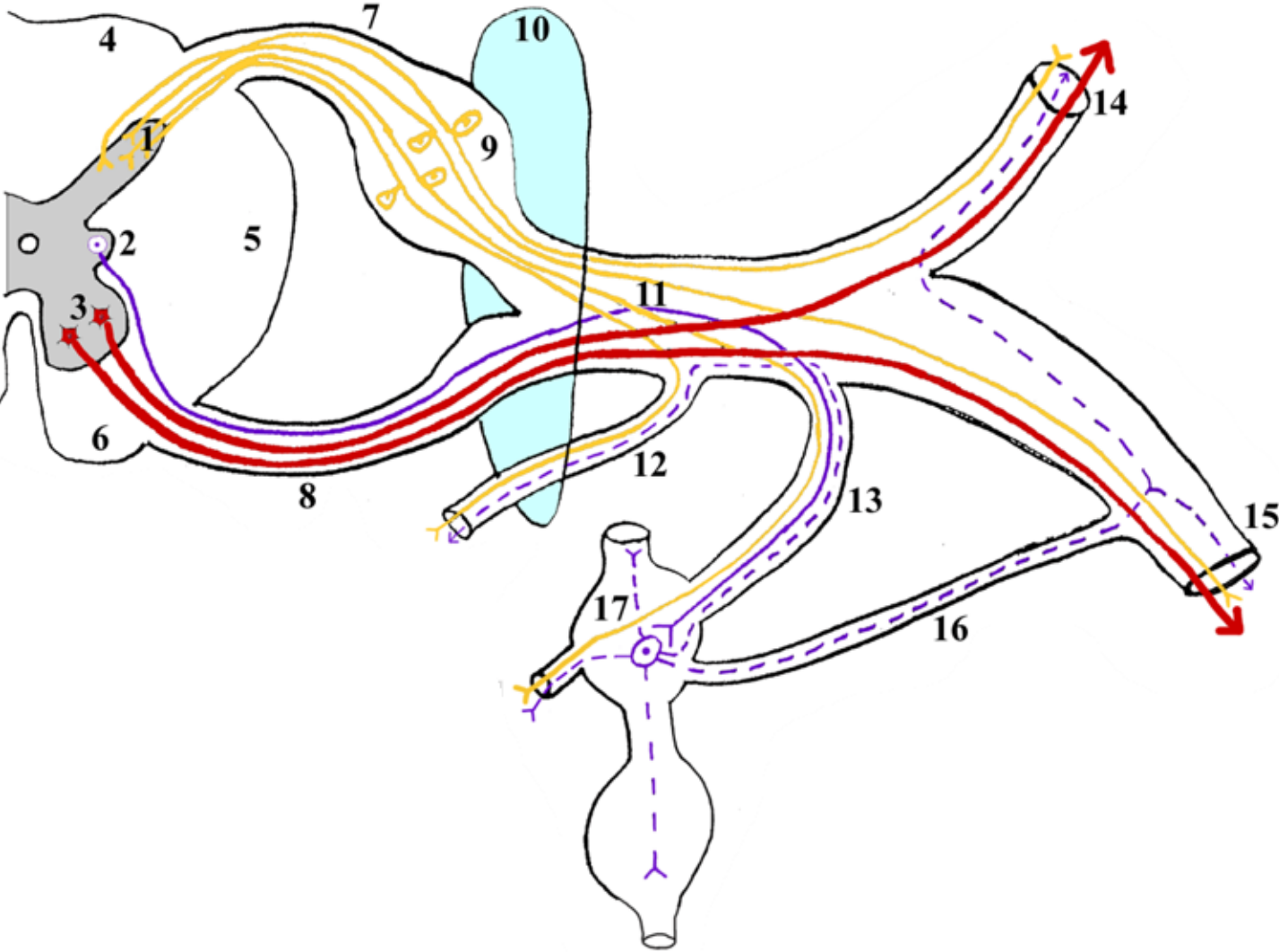
Functional zones of the grey matter



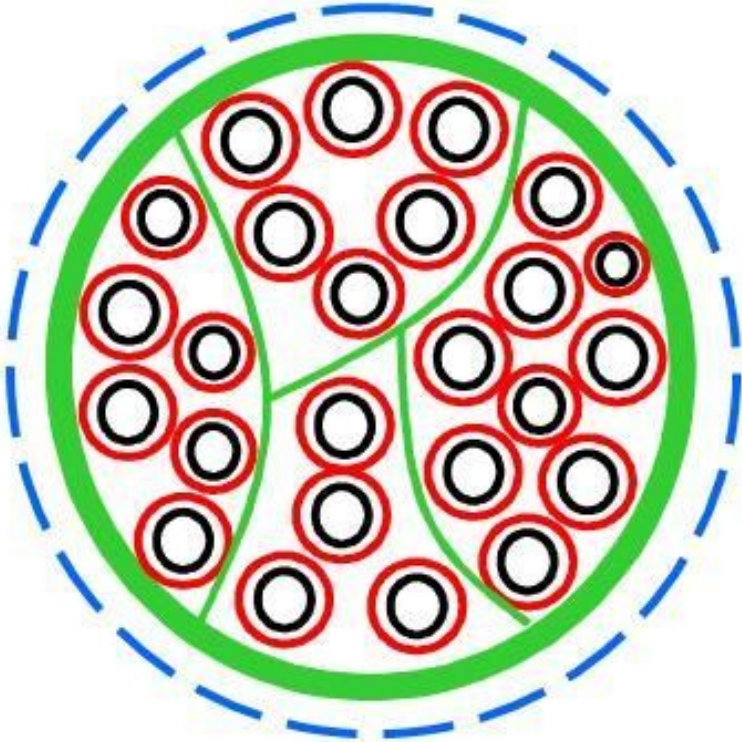
Pseudounipolar neuron



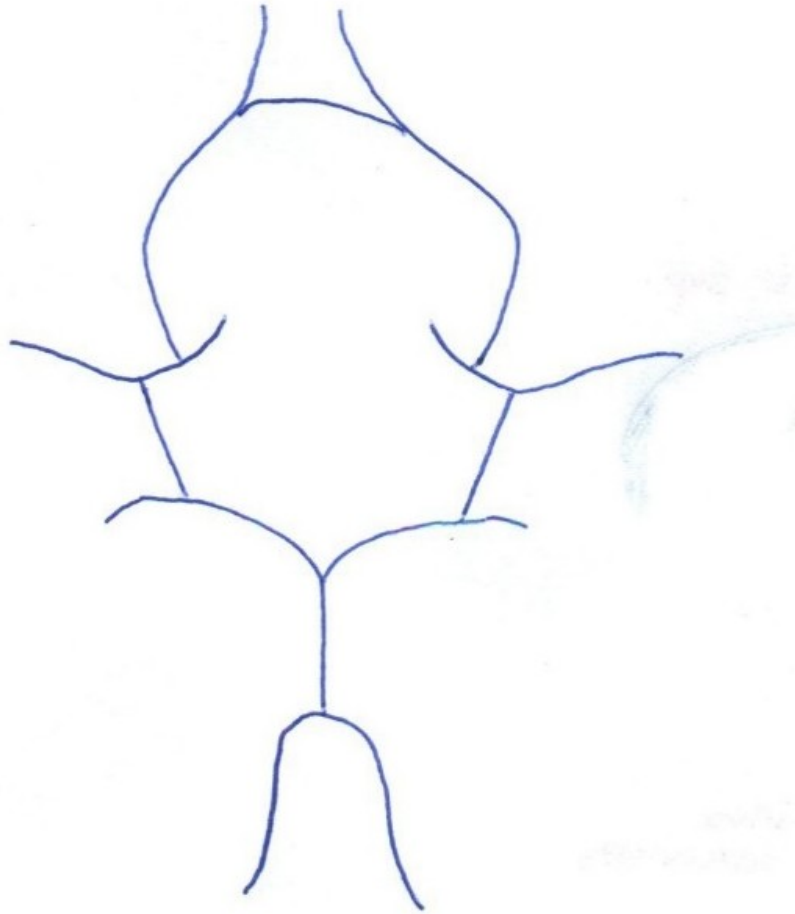
Scheme of the spinal nerve



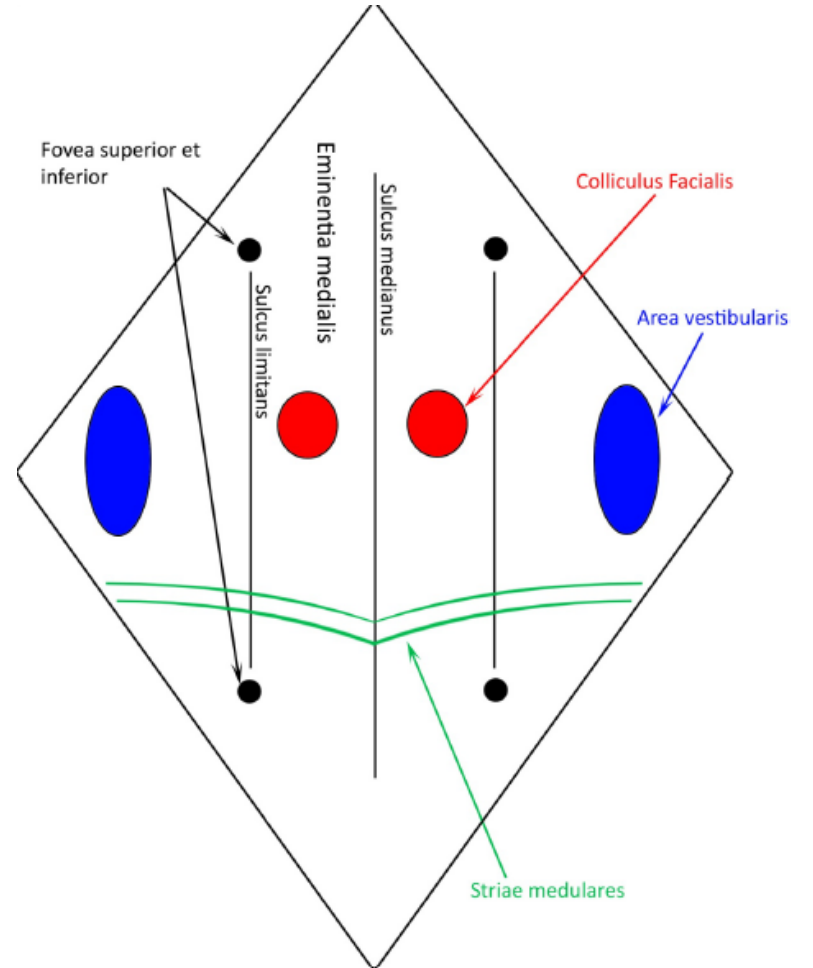
Structure of the spinal nerve



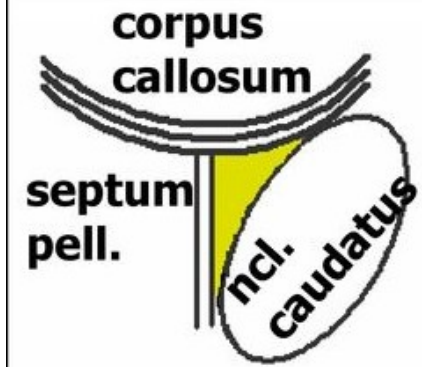
Circulus arteriosus Willisii



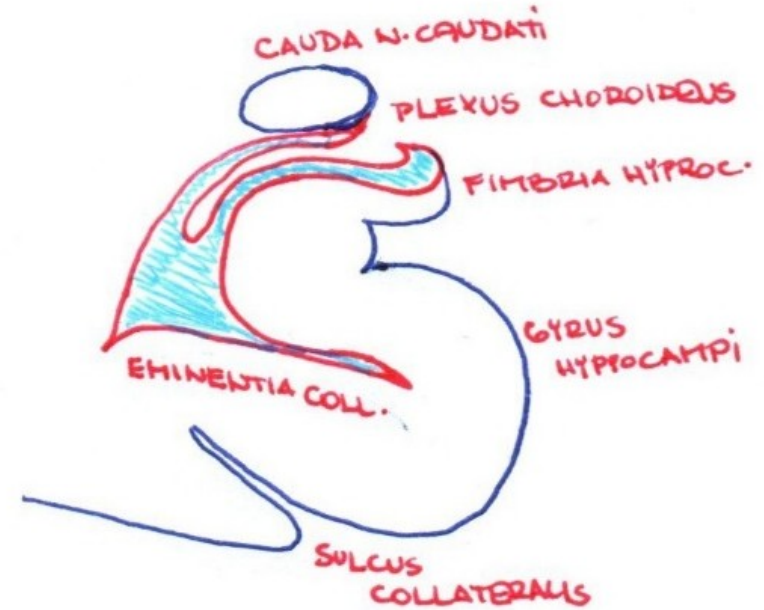
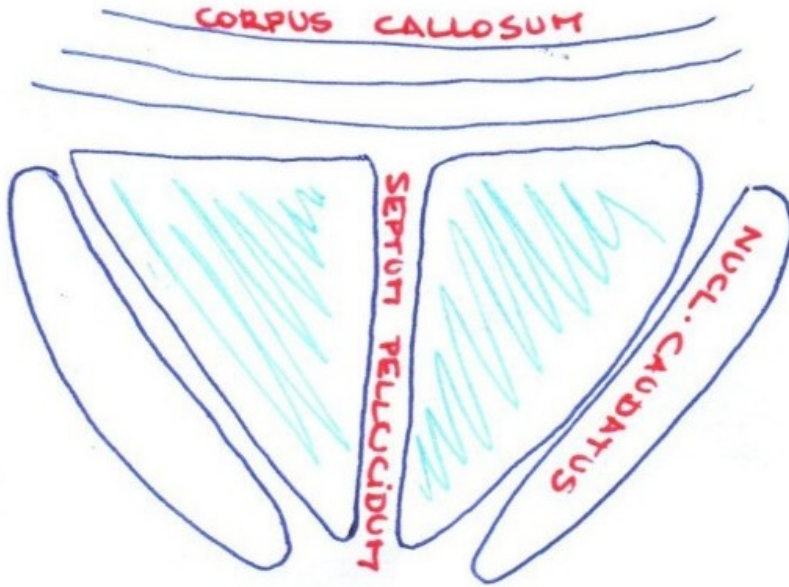
Fossa rhomboidea



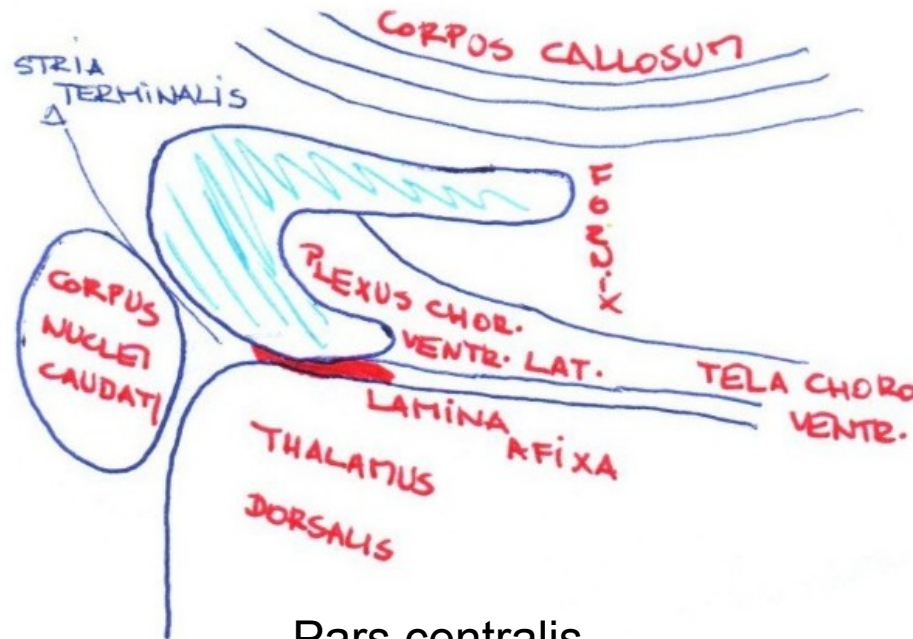
Ventriculus lateralis



Cornu frontale

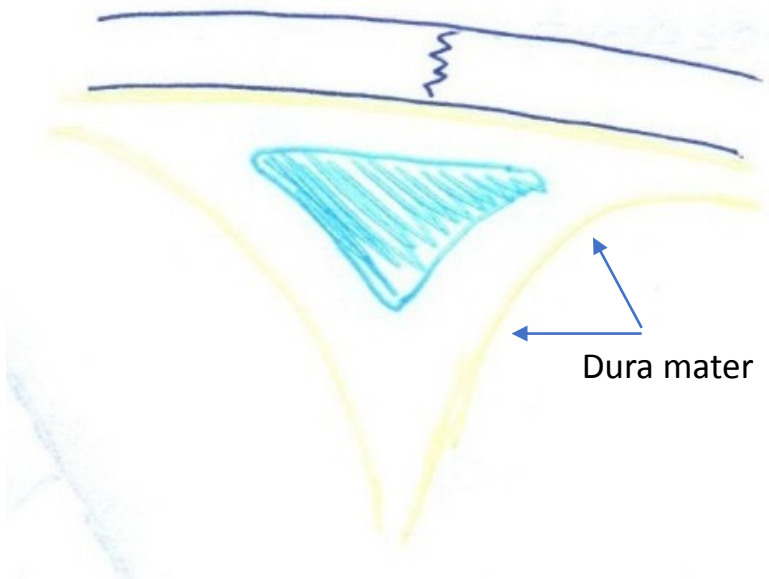


Cornu temporale

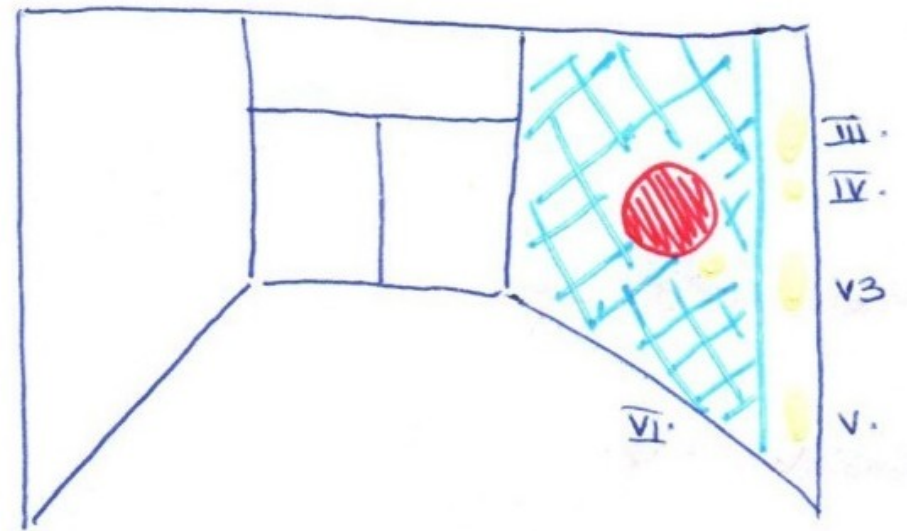


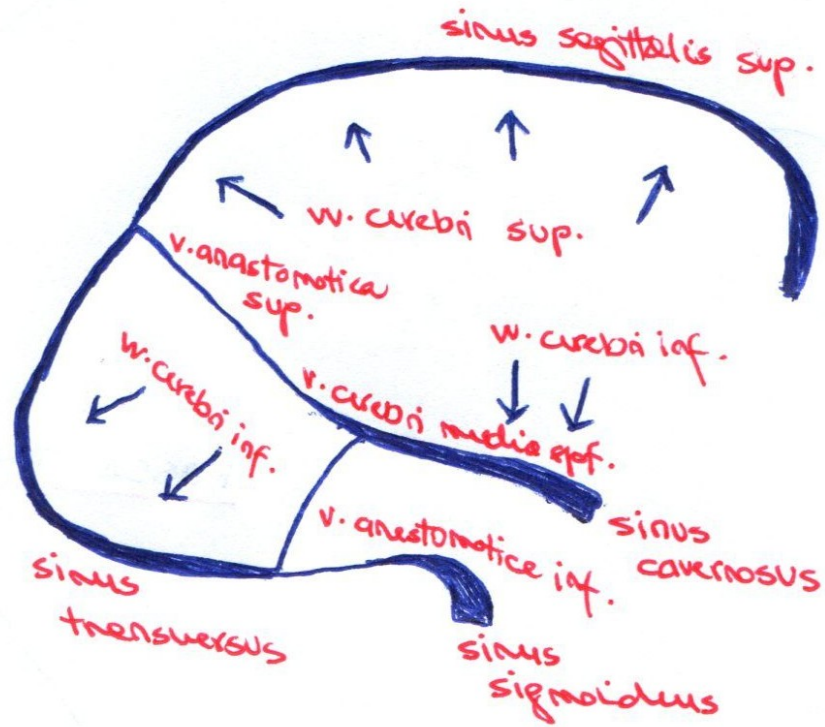
Pars centralis

Sinus sagittalis superior

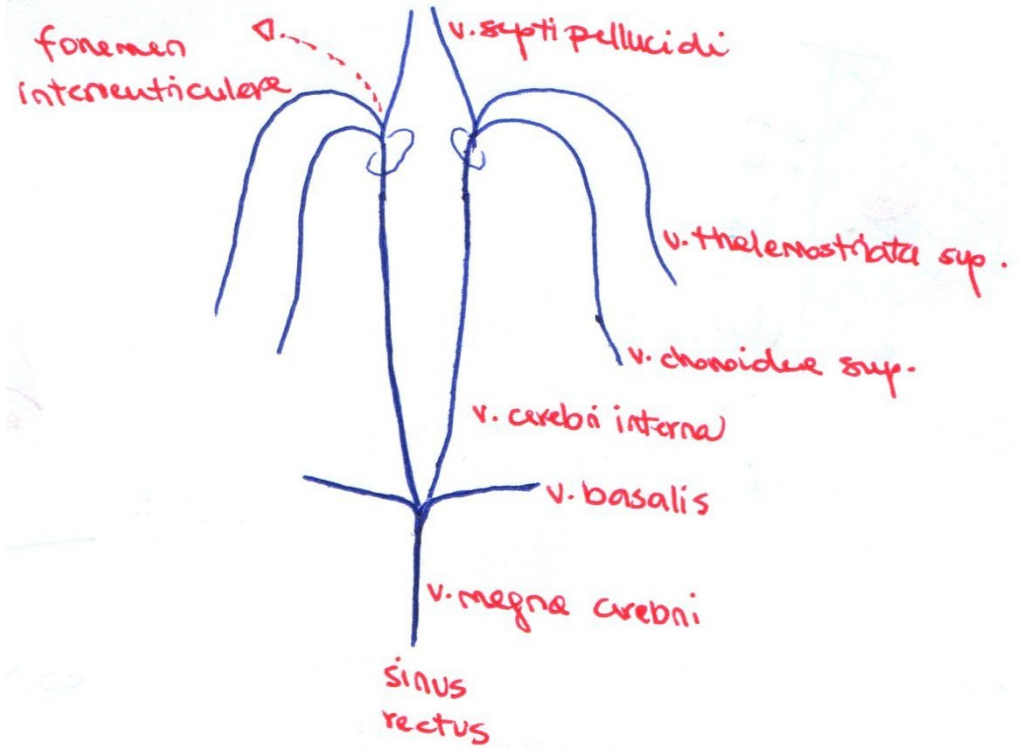


Sinus cavernosus





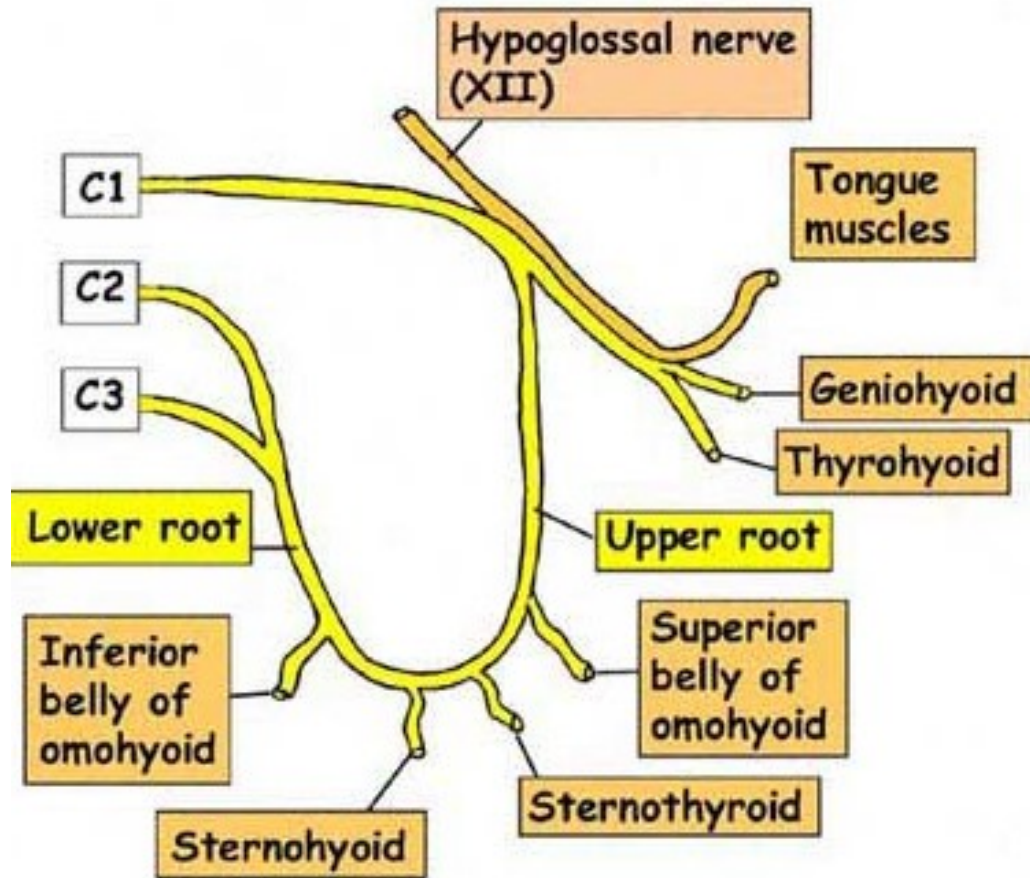
Superficial veins



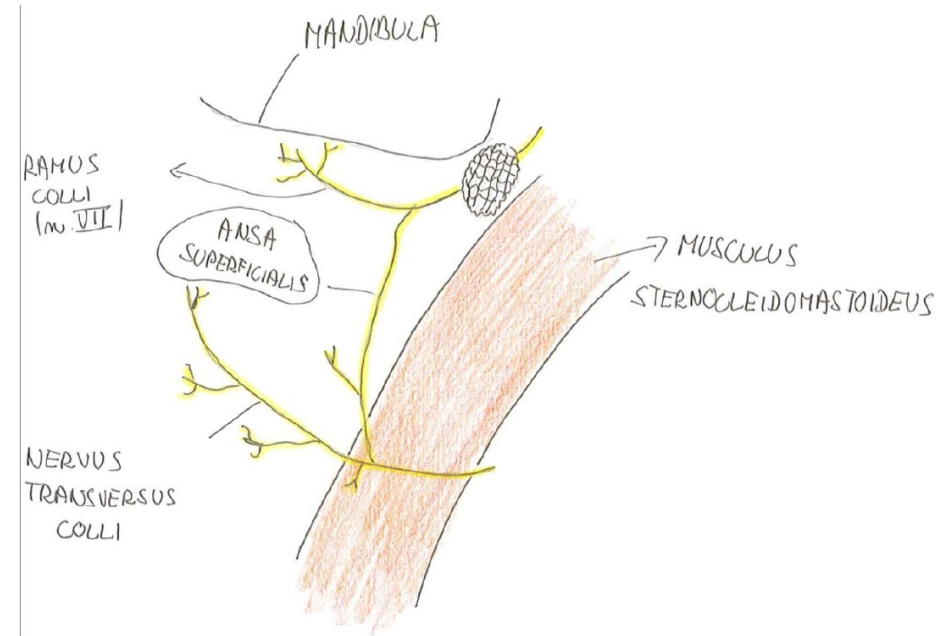
Deep veins

Cervical ansae

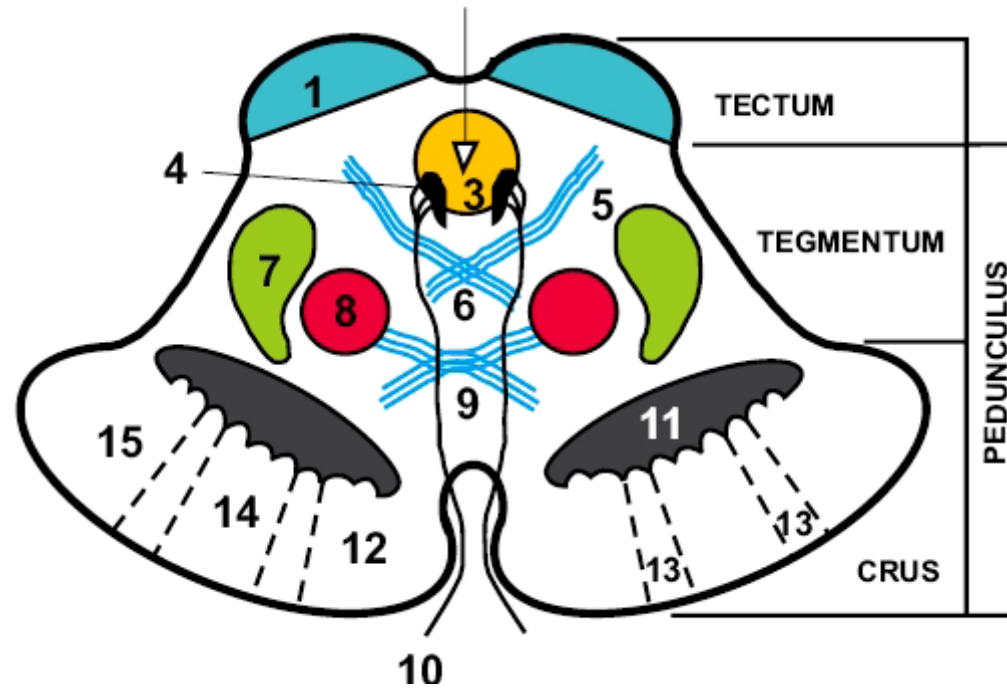
Deep ansa



Superficial ansa

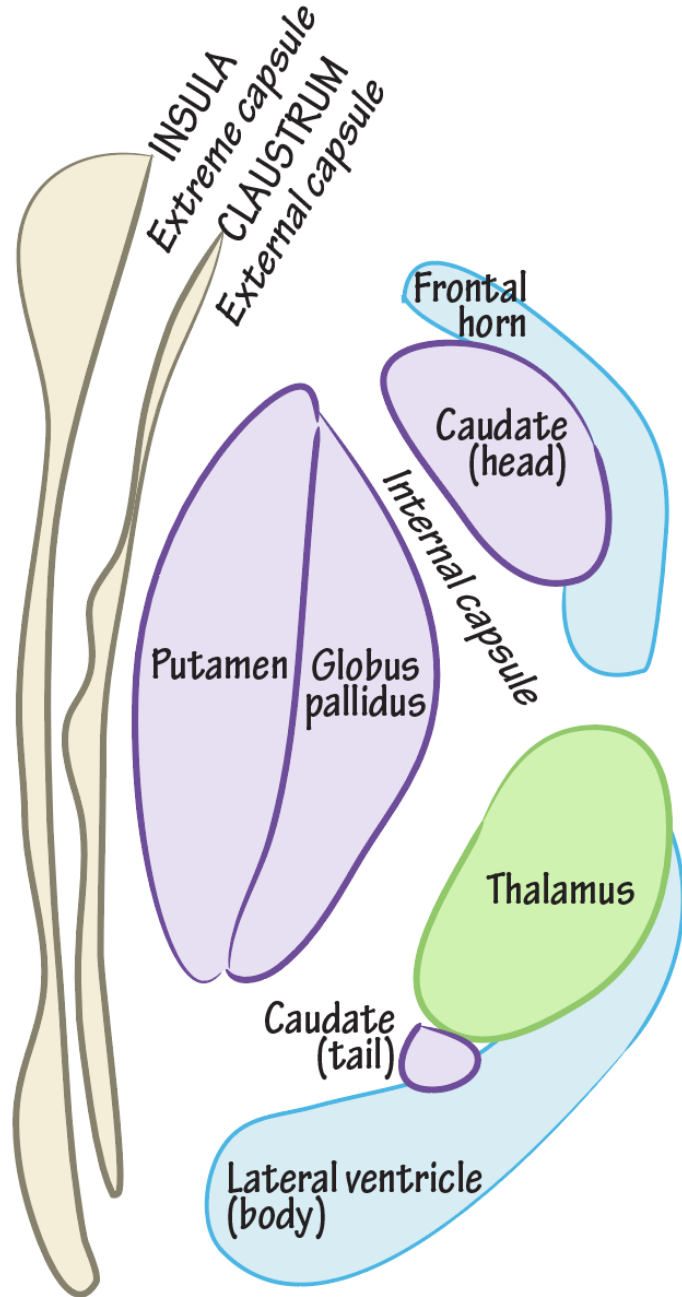


Pedunculus cerebri

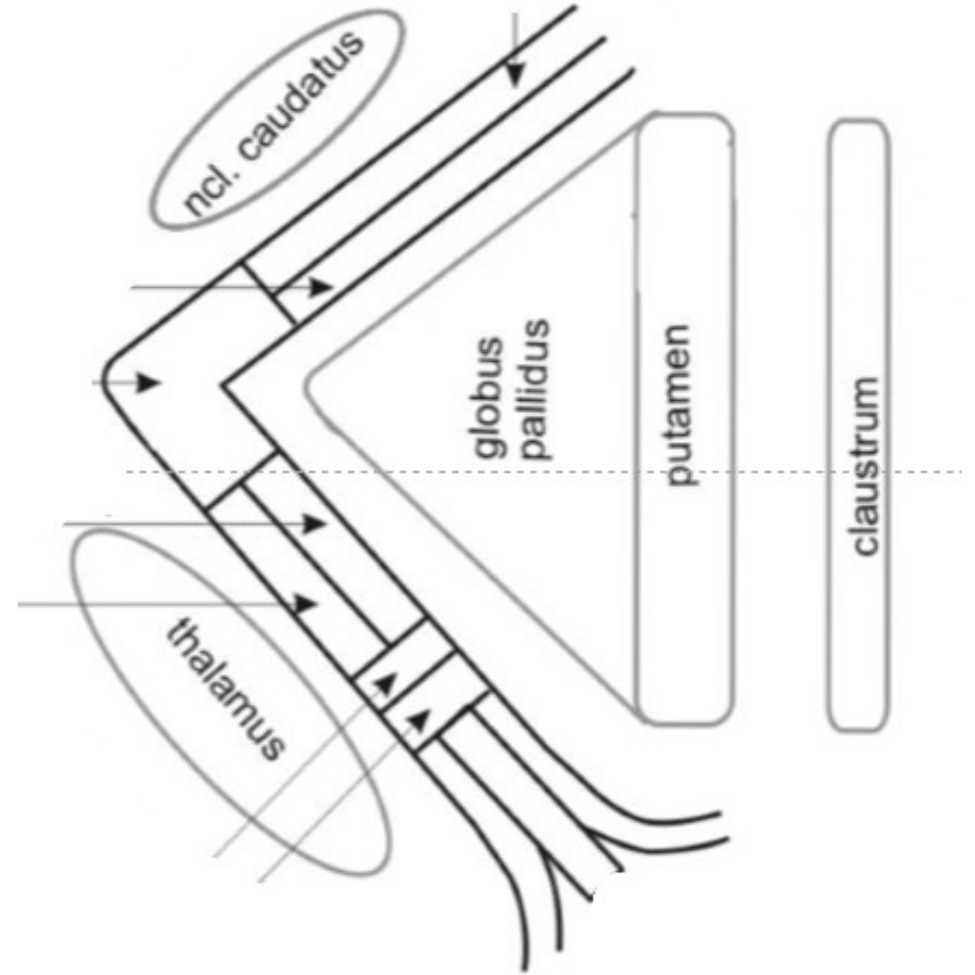


Basal ganglia

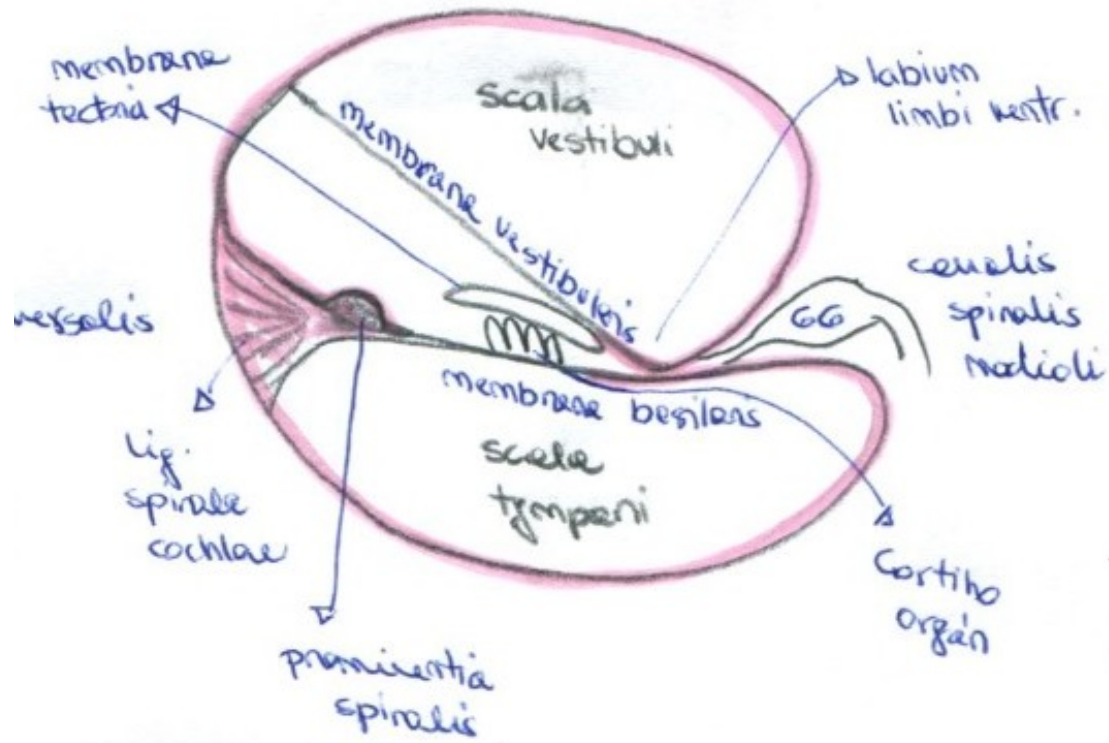
Axial View



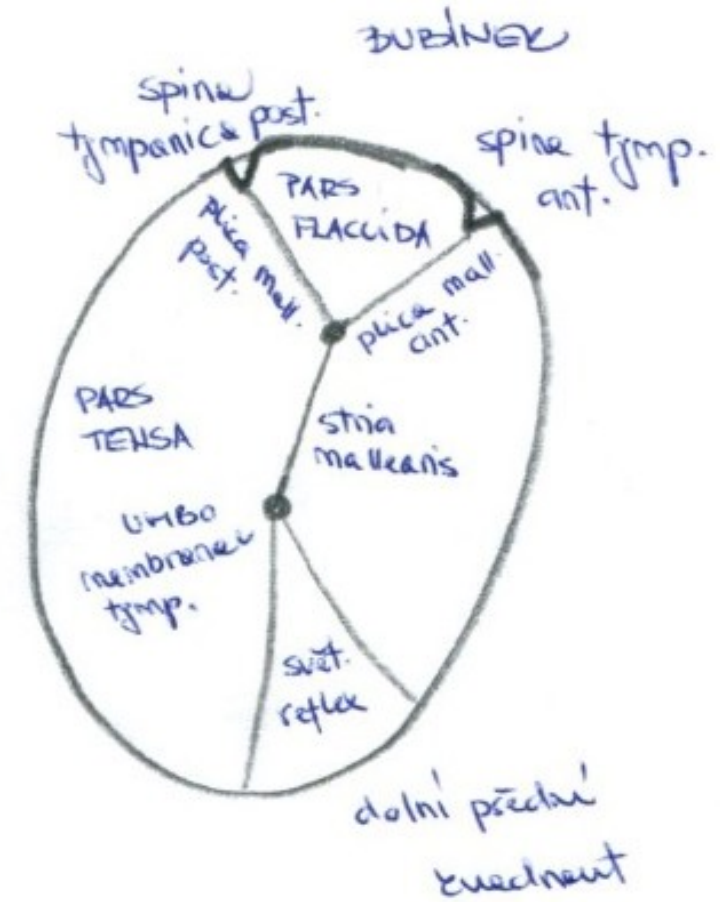
Capsula interna



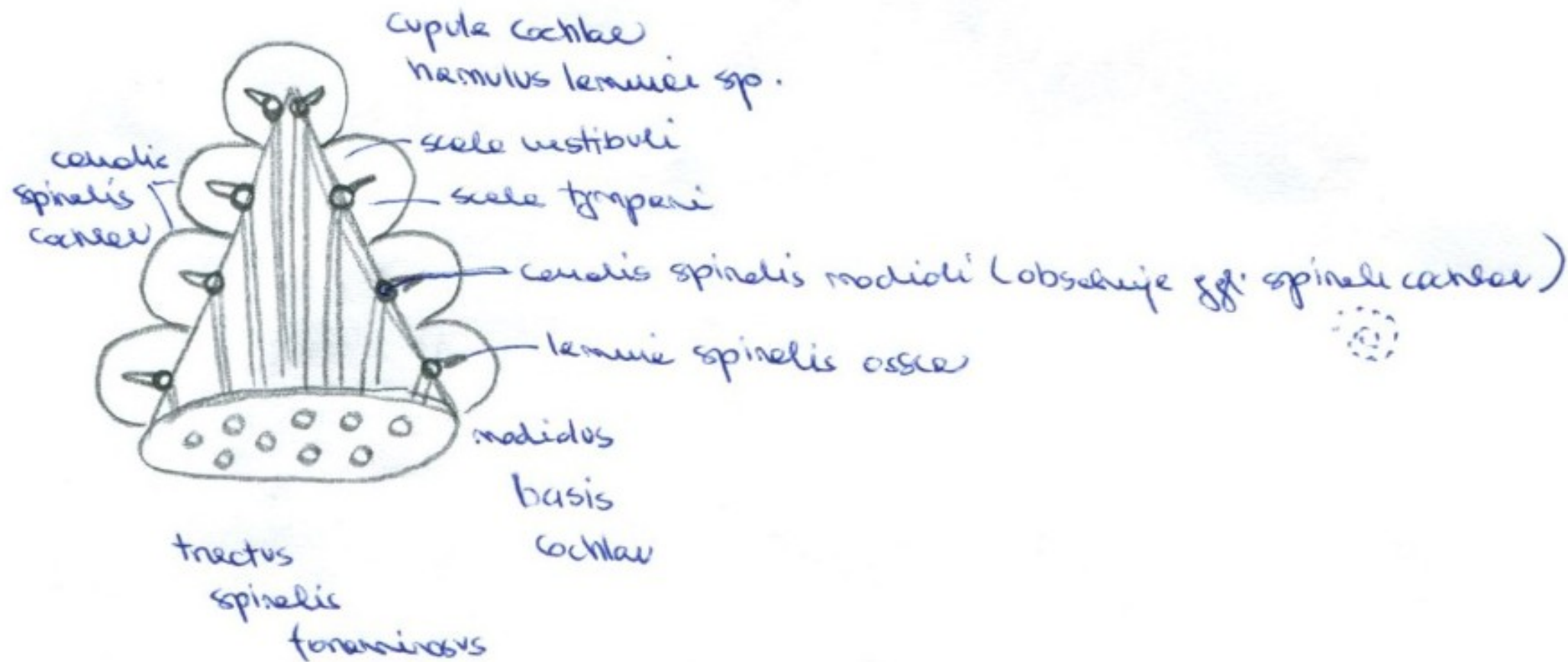
Ductus cochlearis



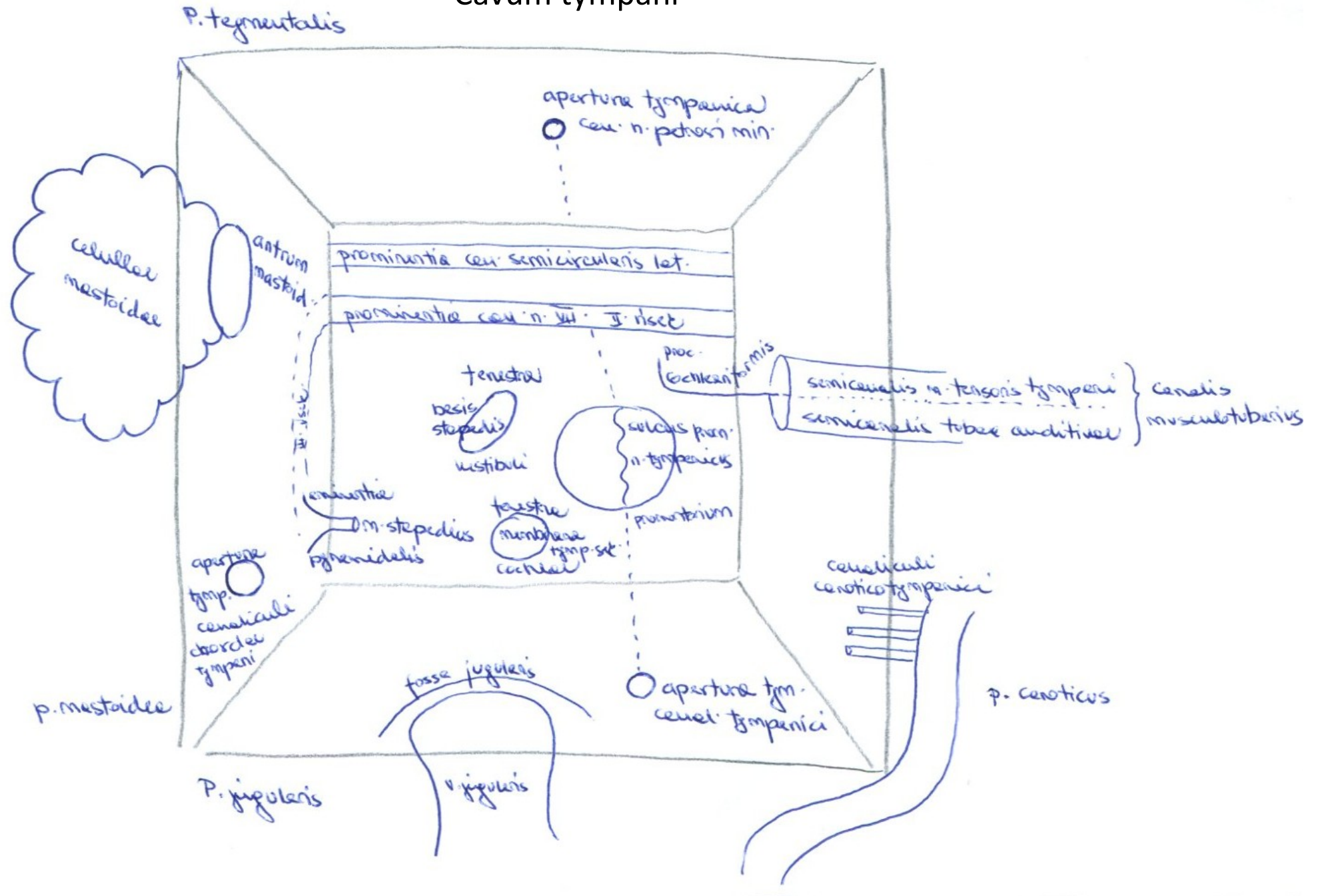
Membrana tympani

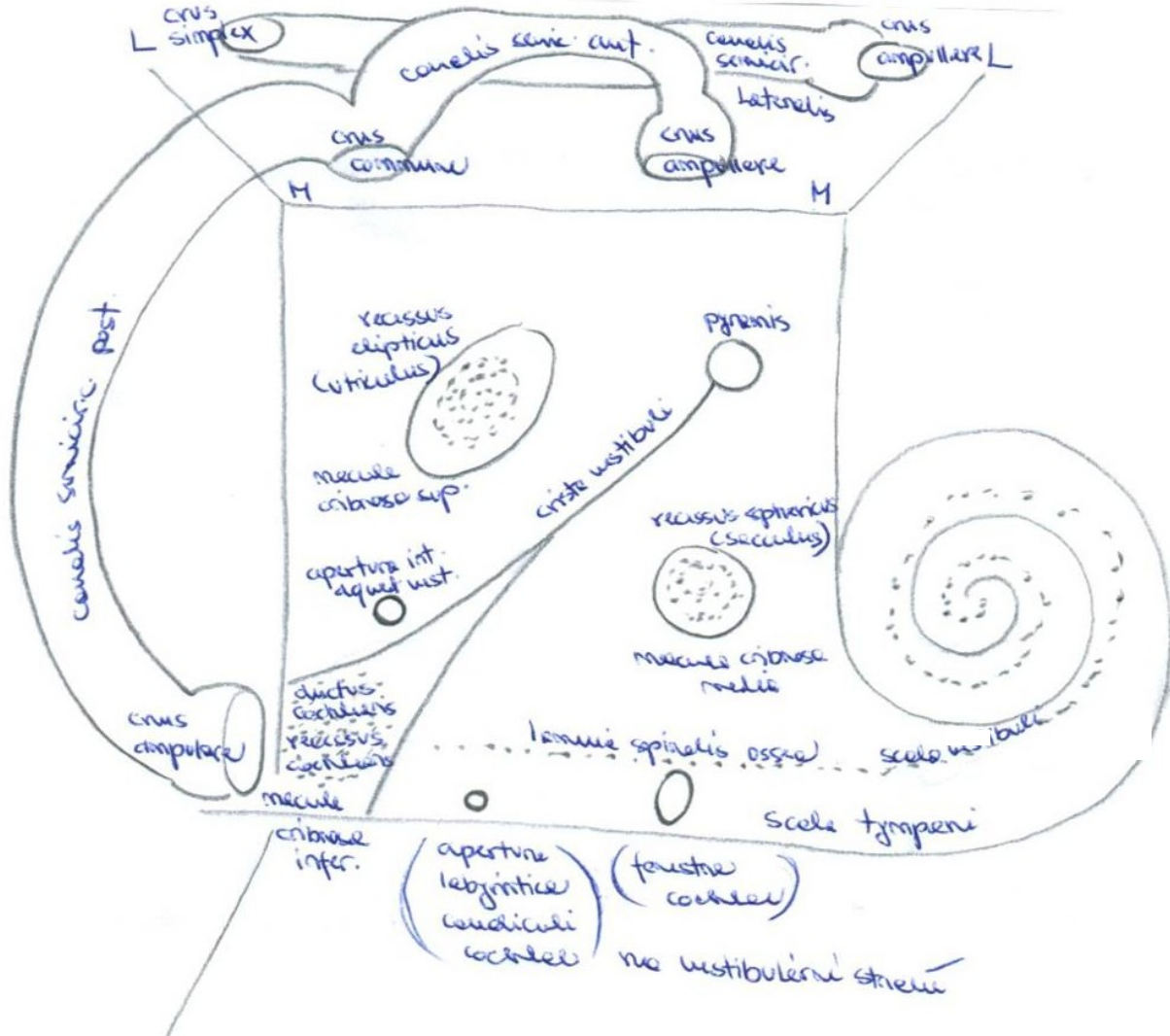


Cochlea



Cavum tympani



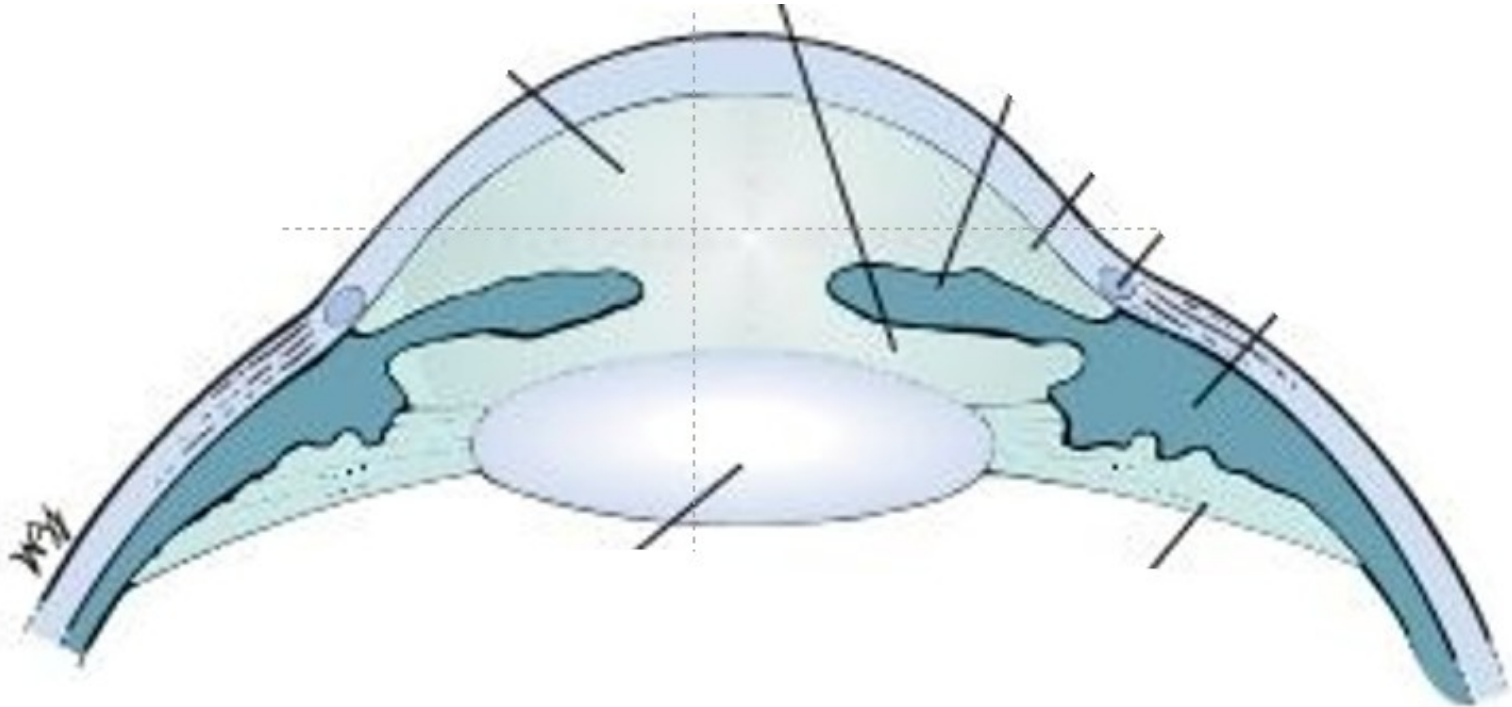


Vestibulum of the osseous labyrinthus

Porus acousticus internus



Camerae bulbi



Tooth

