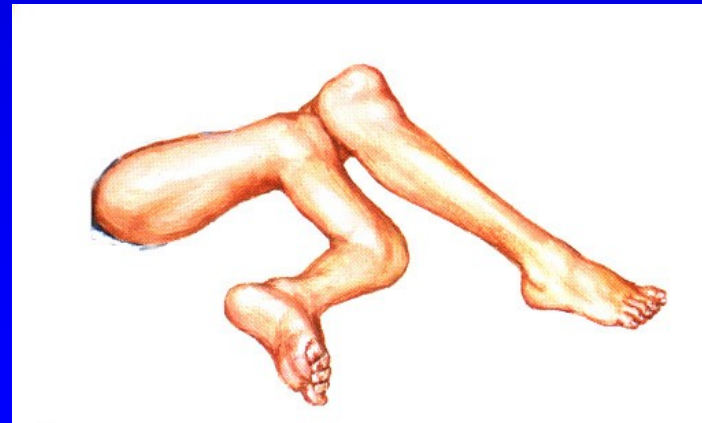


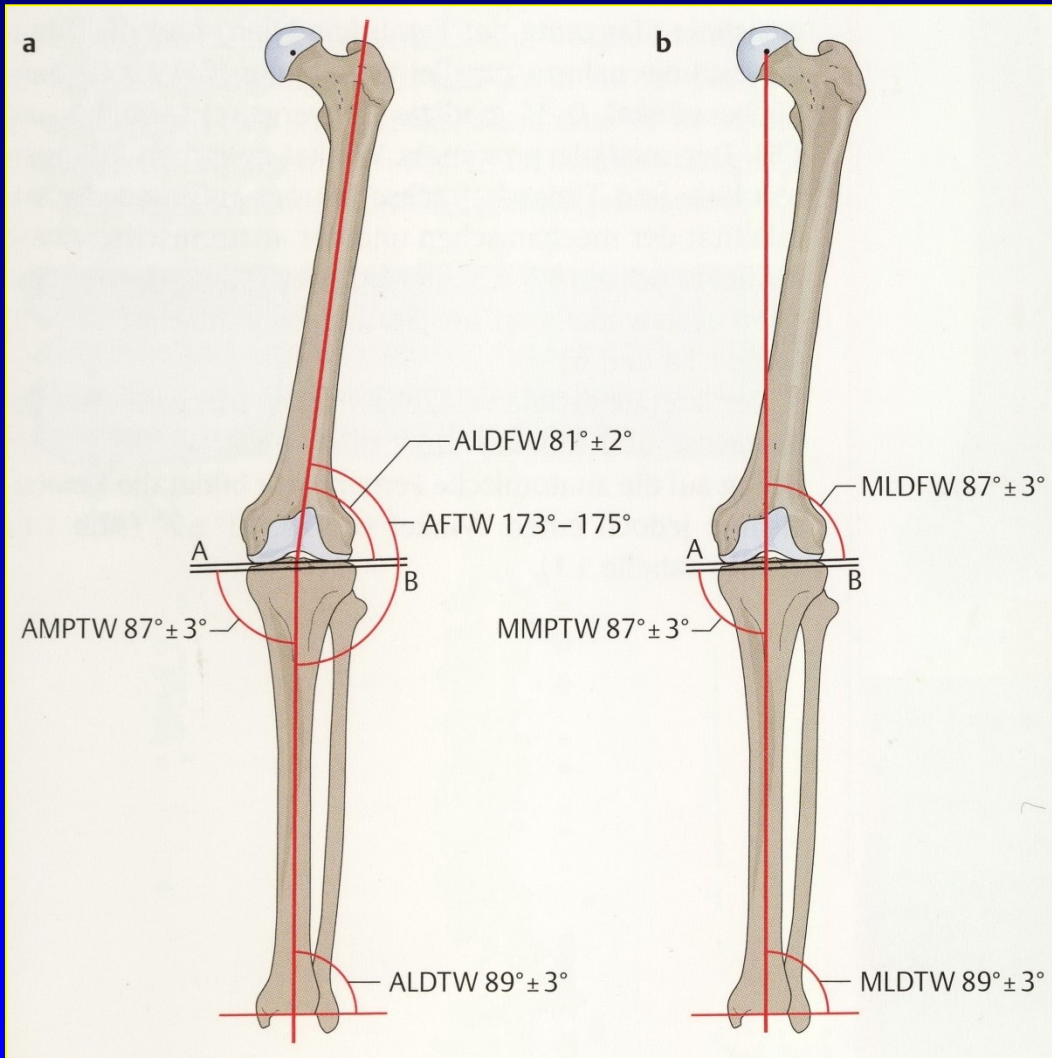
# Axial deformities of lower limb

Rozkydal Z.

# Causes

Congenital  
Fractures  
infections  
Neurological diseases  
Endocrine diseases  
Metabolic diseases  
Osteopathies





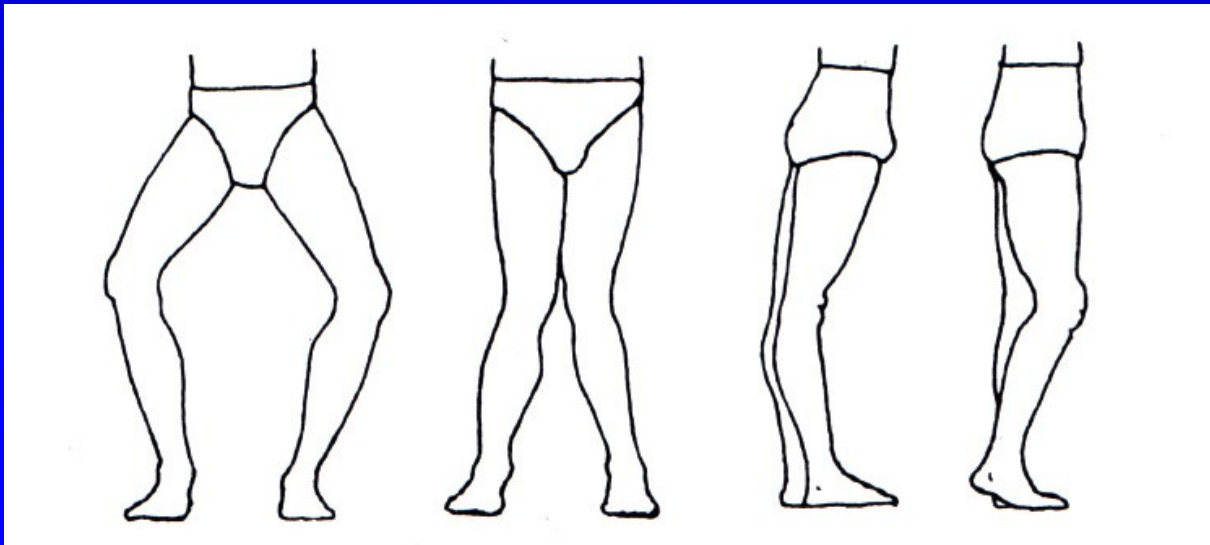
# Basic items

Valgus - distal part goes laterally

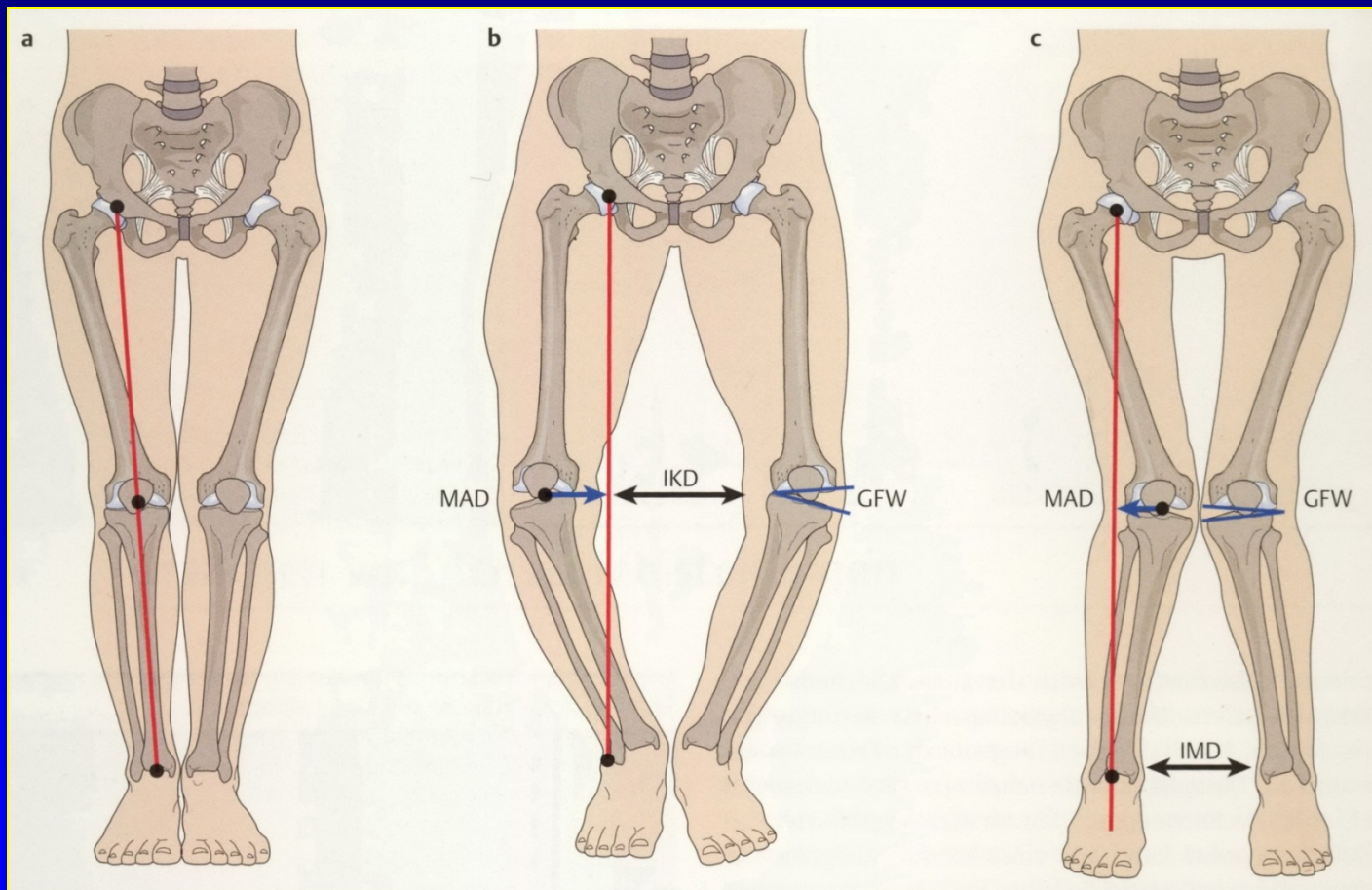
Varus - distal part goes medially

Recurvation - bowing dorsally

Antecurvation - bowing anteriorly



# Mikuliczova linie



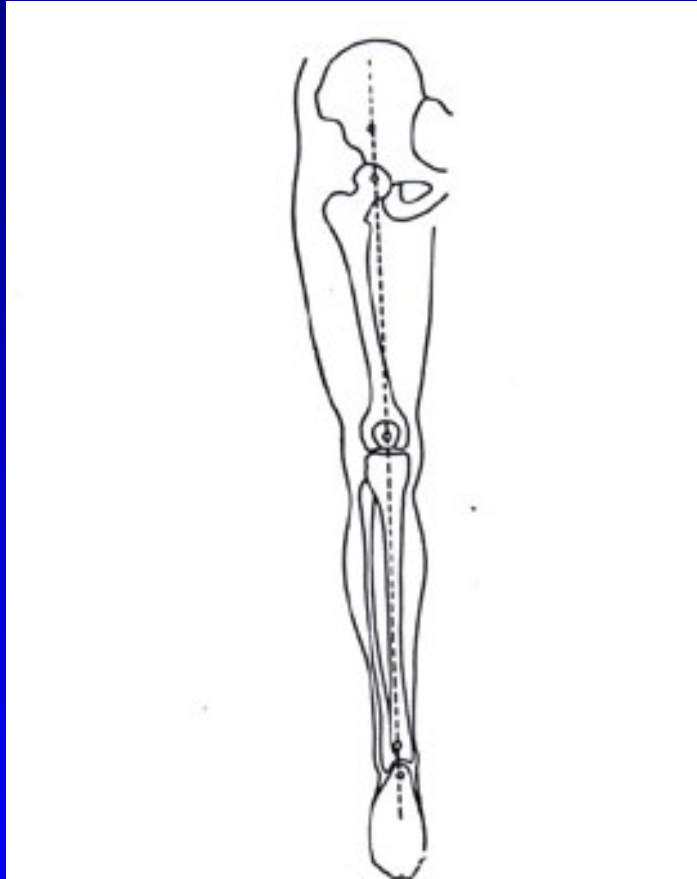
**a) Norma**

**b) Varus**

**c) Valgus**

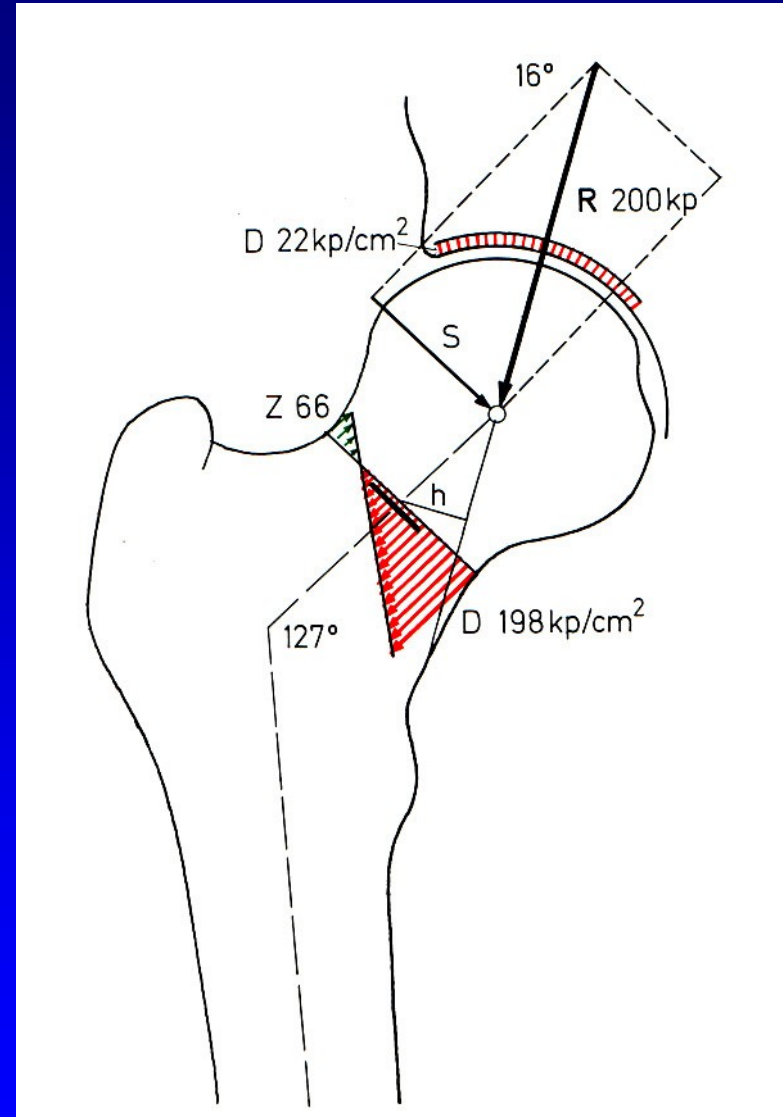
Podle Lobenhoffer, Agneskircher, Galla: Kneegelenknahe Osteotomien, Thieme, 2007

# Mikulicz line

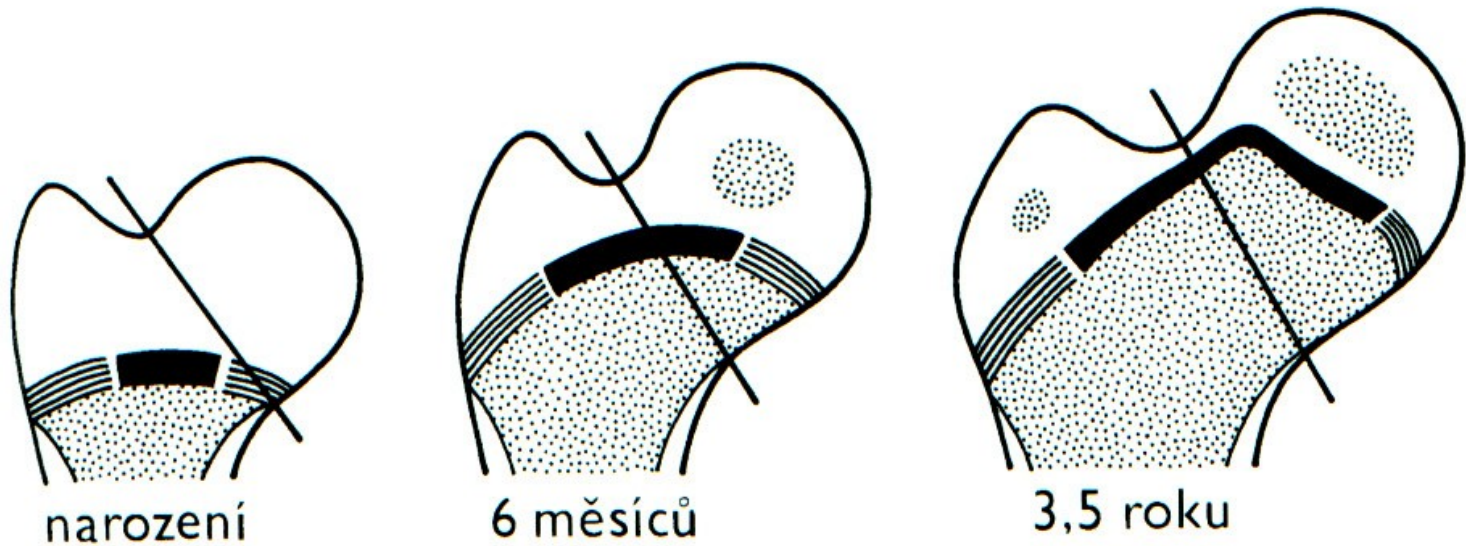


CCD angle

Normal 125  $\pm$  5

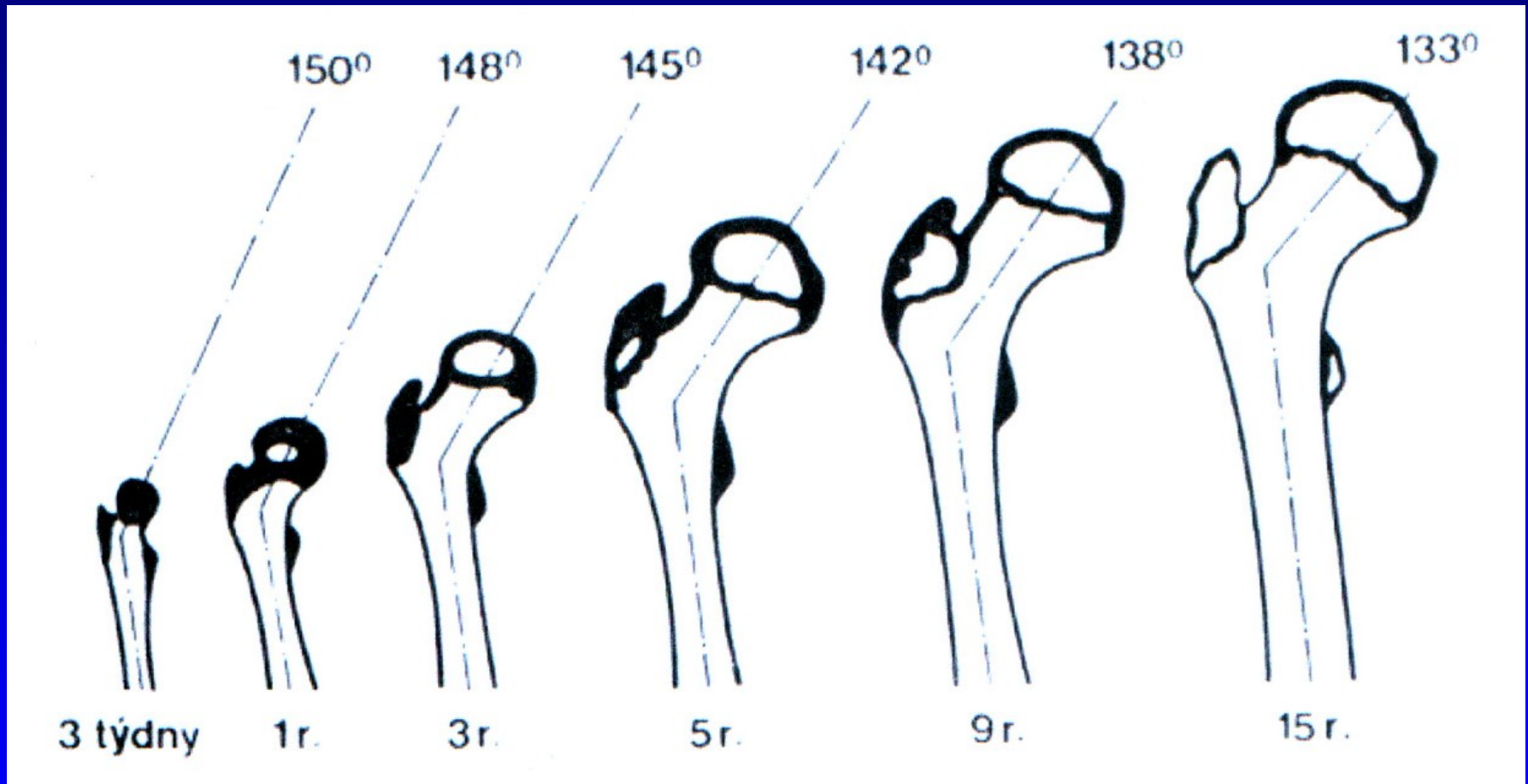


# Chondroepiphysis of proximal femur





# Changes of CCD angle



Change of anteversion of the femur: birth 40

puberty 10-15

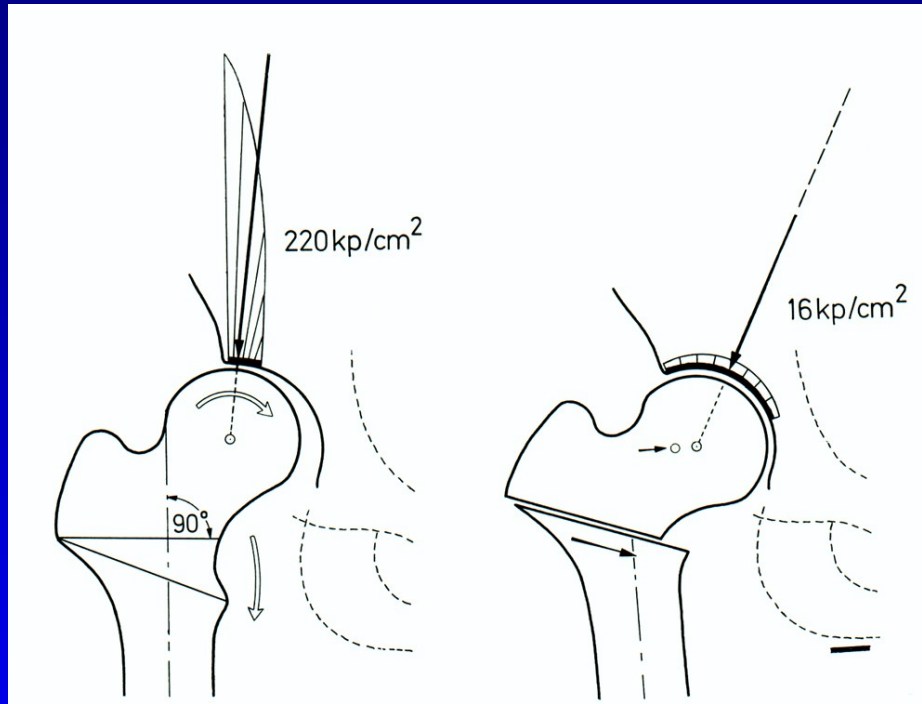
adult 11

# Coxa valga

- Coxa valga
- Coxa valga subluxans
- Coxa valga anteverta
- Coxa valga in cerebral palsy



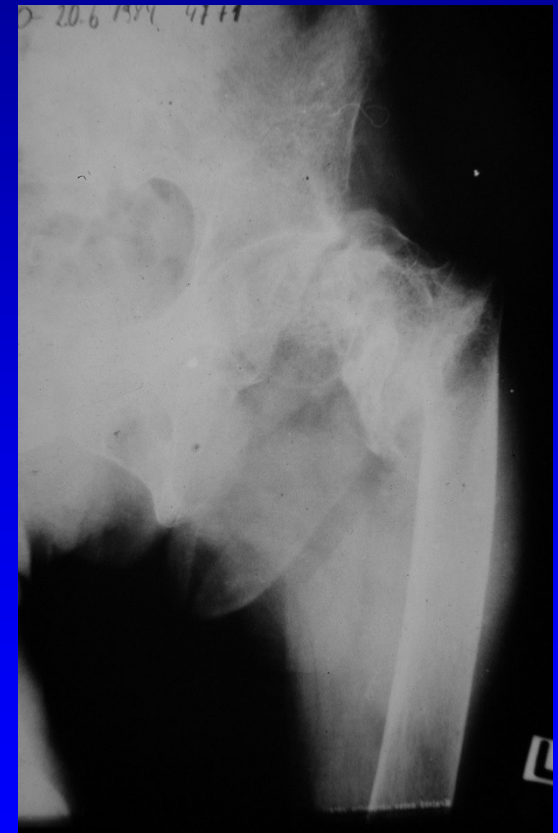
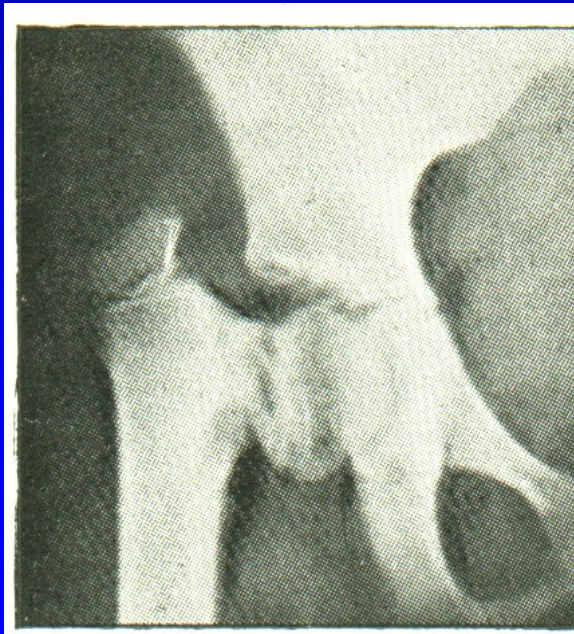
# Pauwels osteotomy



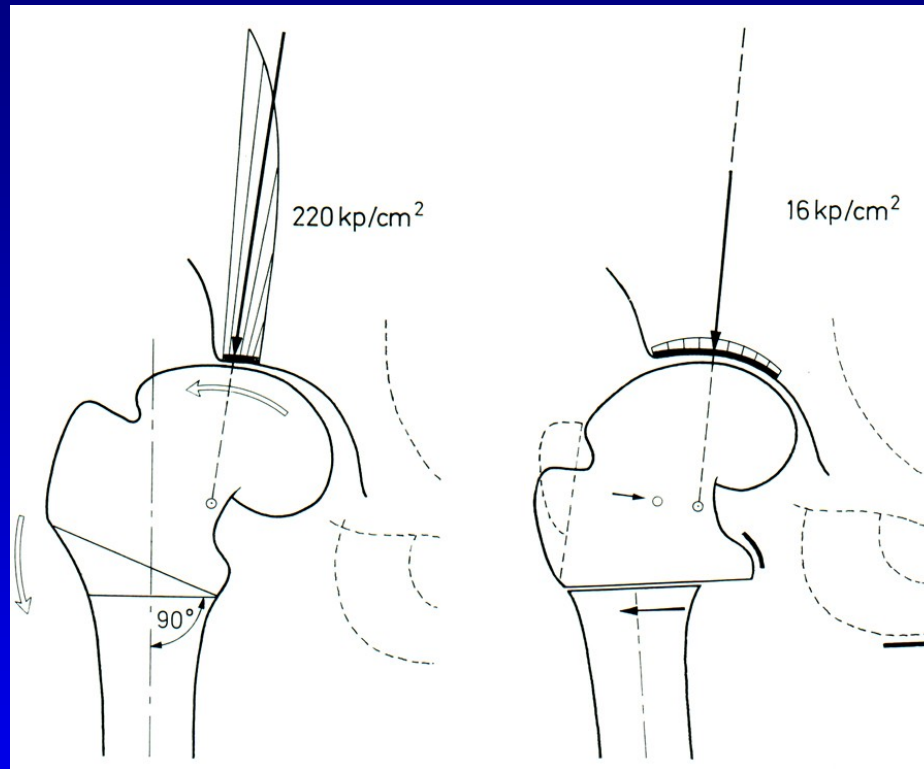
## Varus osteotomy

# Coxa vara

- Coxa vara congenita
- Coxa vara adolescentium
- Coxa vara posttraumatica
- Coxa vara after infection
- Coxa vara in osteopathy

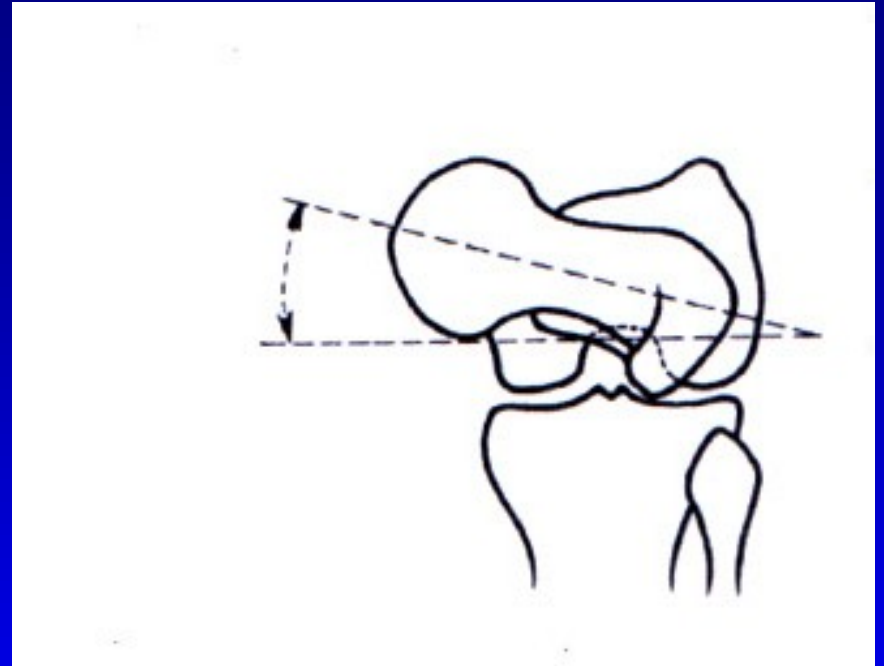
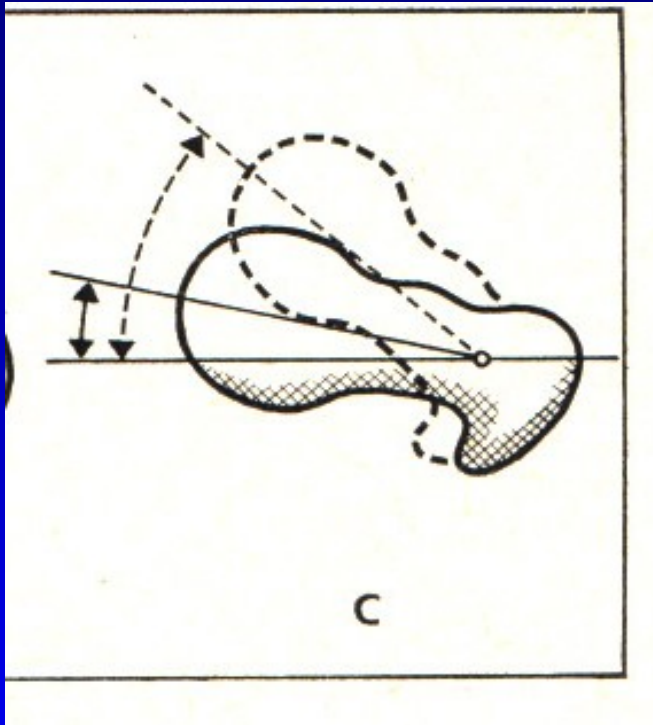


# Pauwels osteotomy



# Valgus osteotomy

# Anteversion



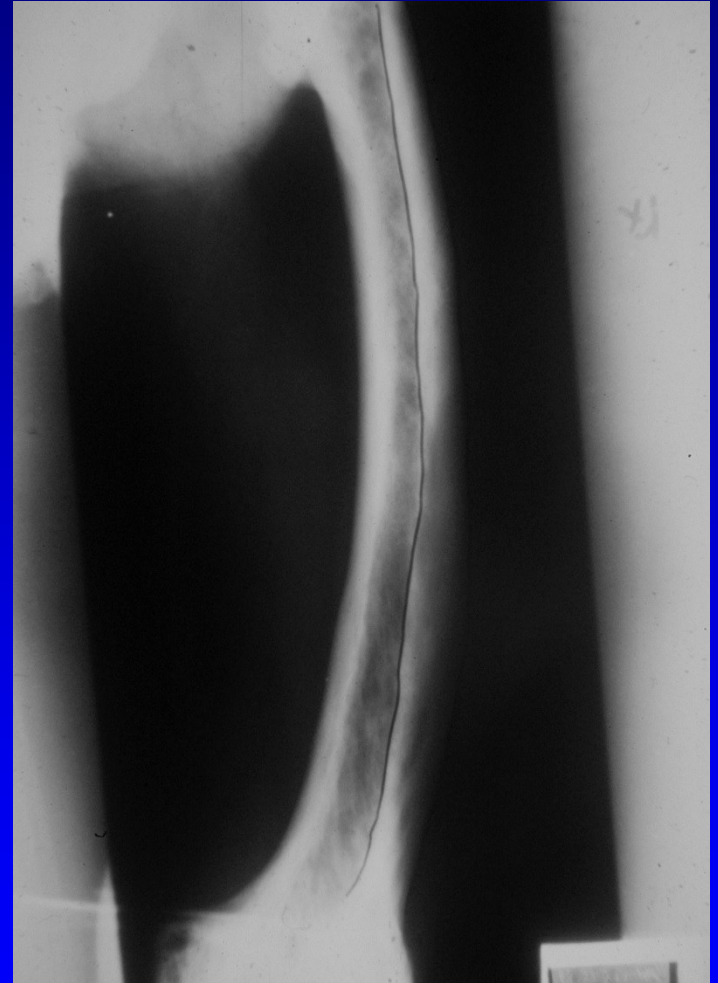
# Deformity in femur

Varus

Valgus

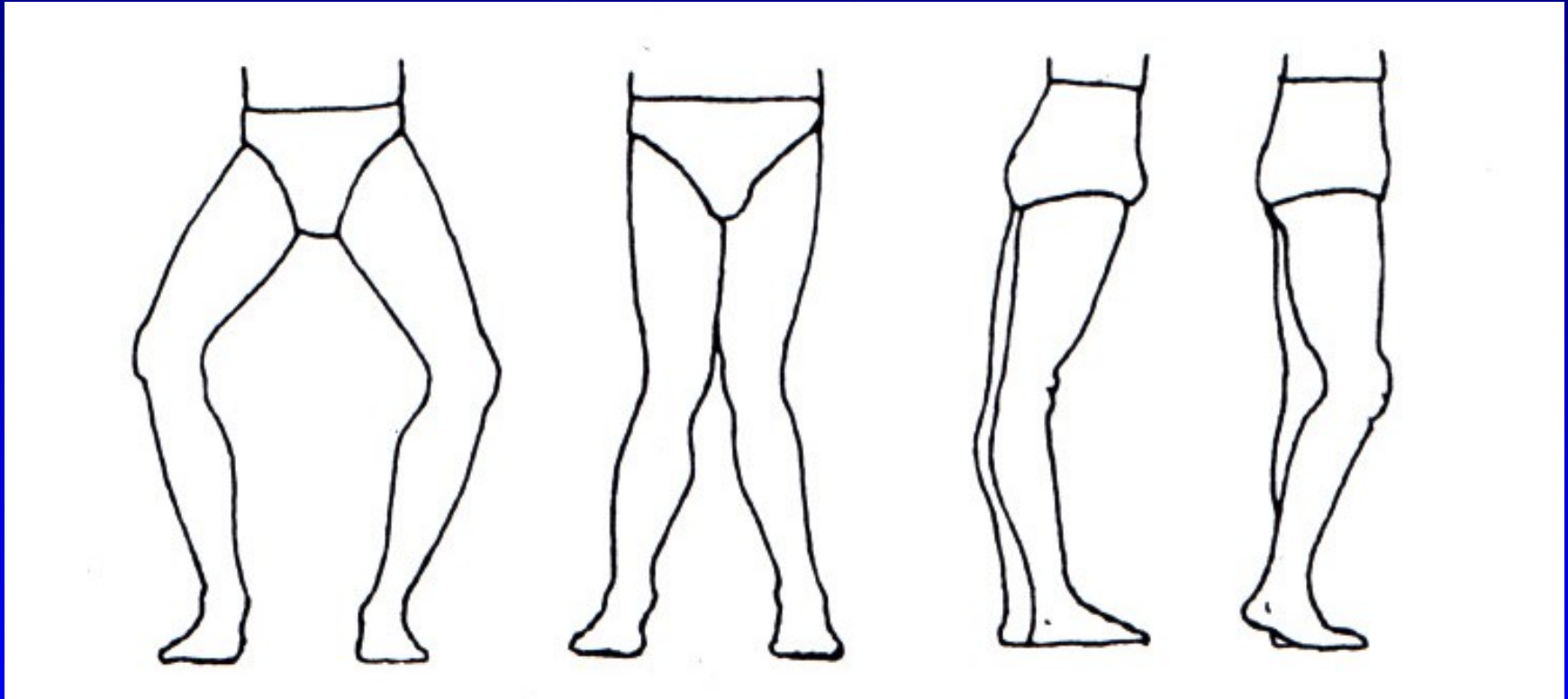
Antecurvation

Recurvation



Paget disease

# The knee



Genu varum

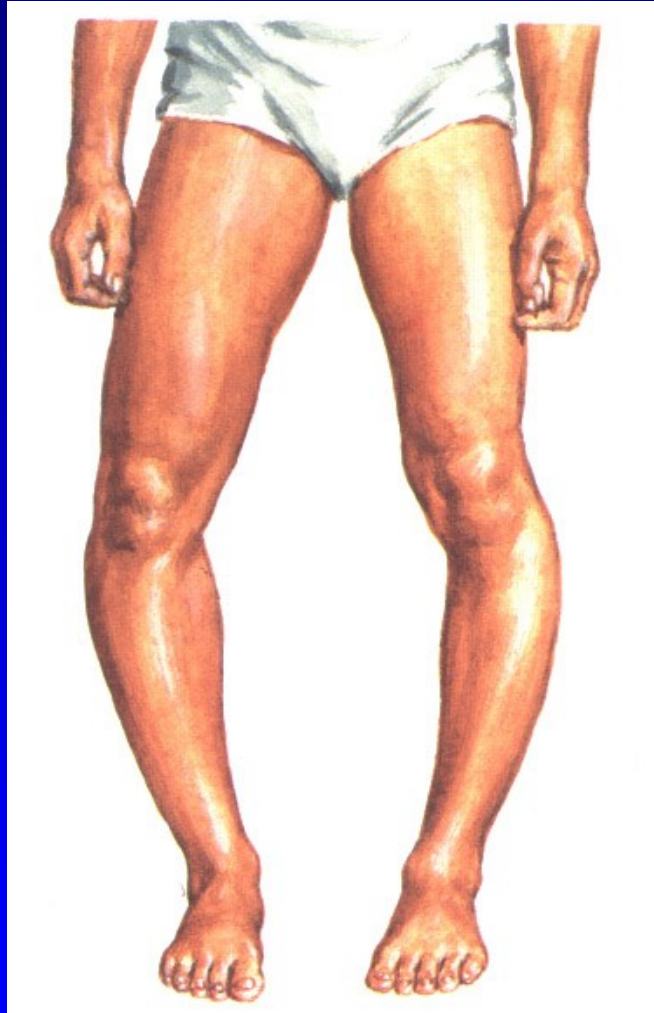
genu valgum

genu recurvatum

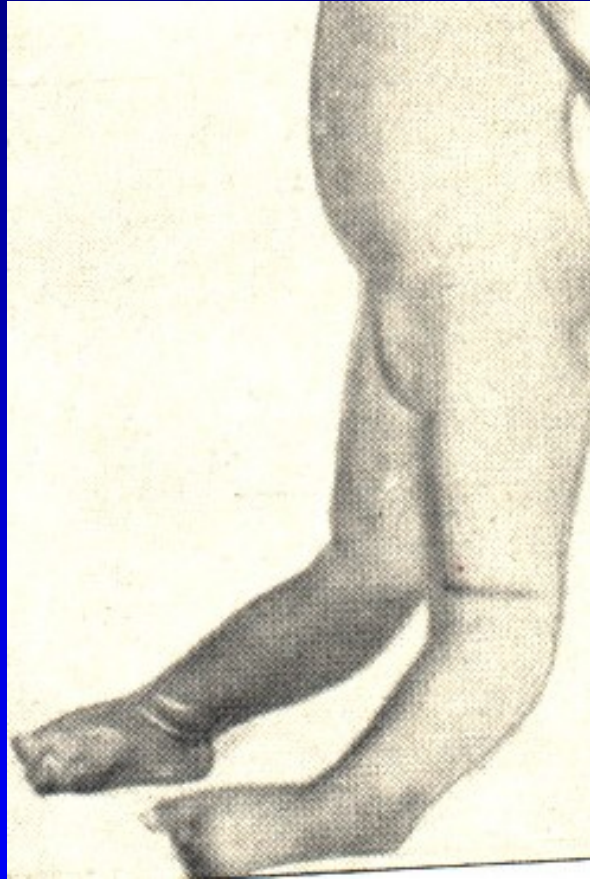
genu flectum



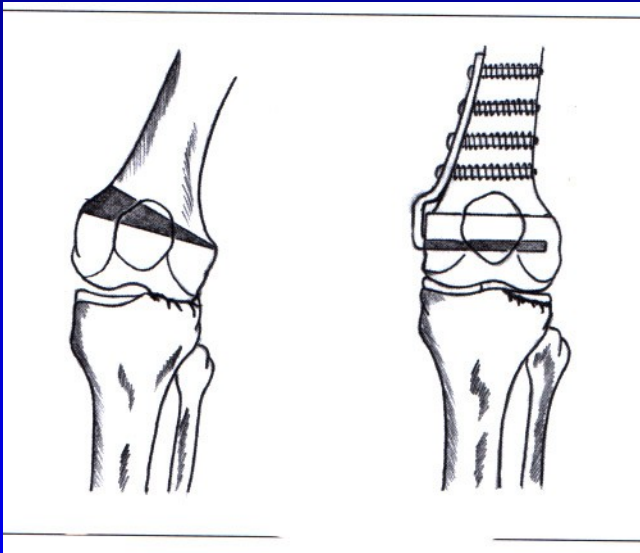
# Tibia vara Blount



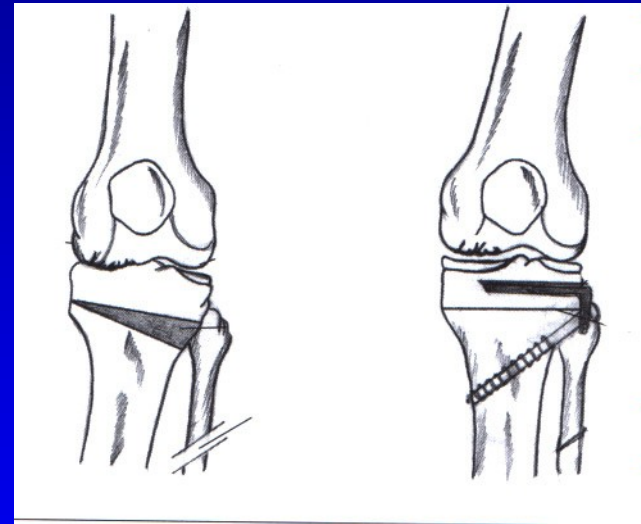
# Genu recurvatum congenitum



# Osteoarthritis of the knee

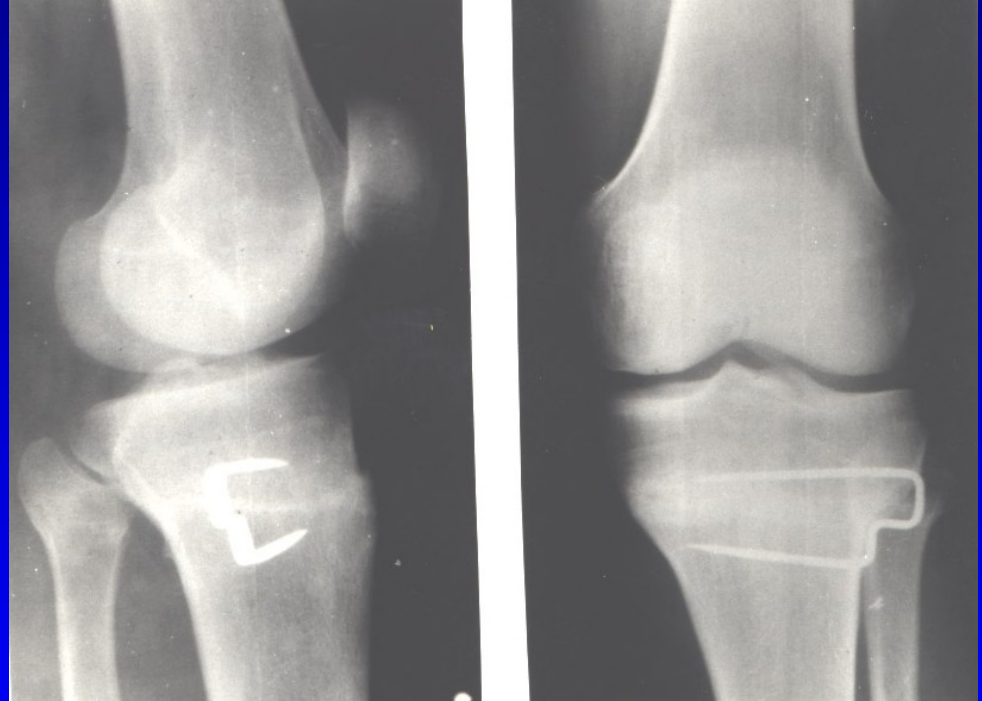
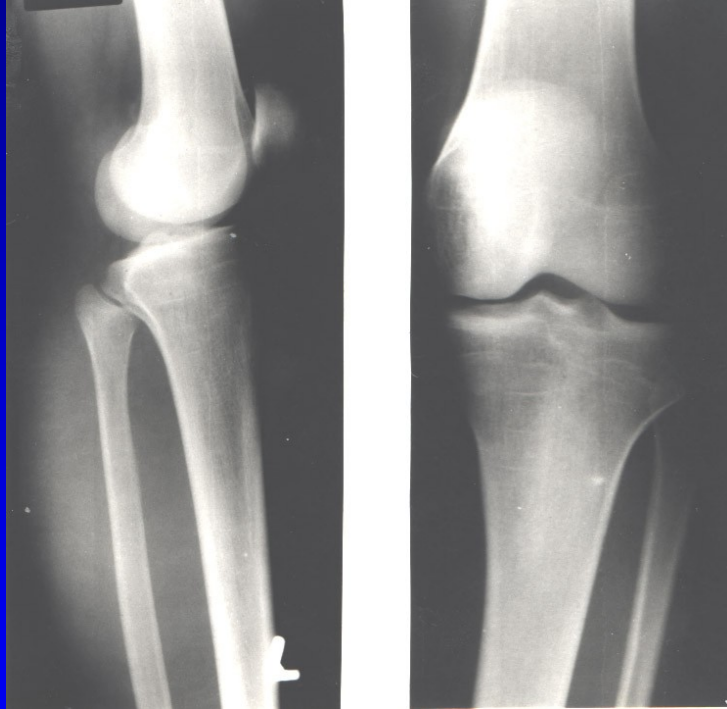


Obr. Genu valgum  
Varus osteotomy



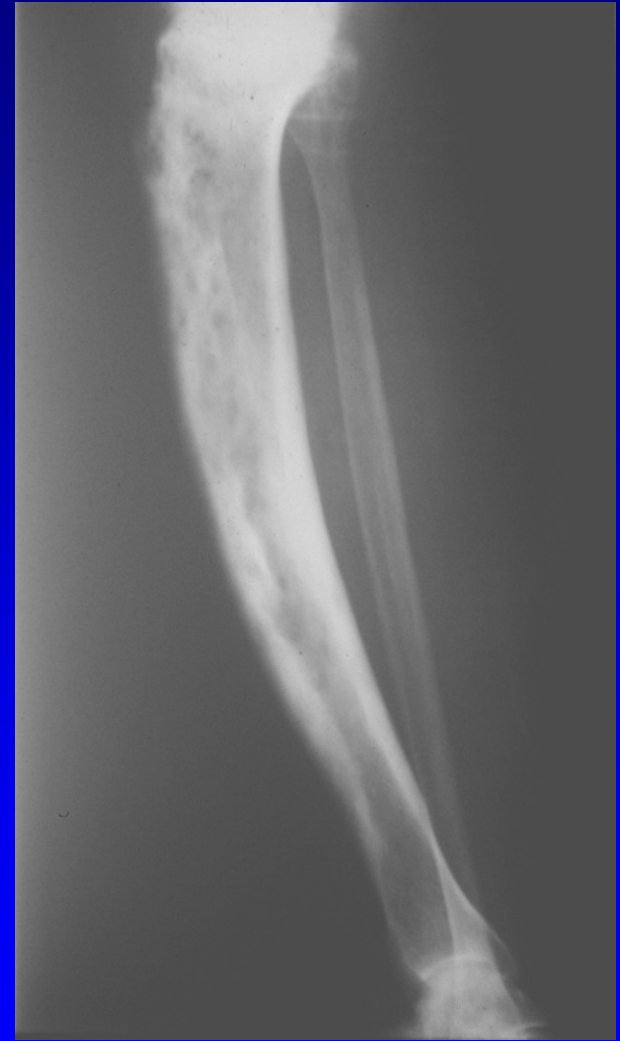
Obr. Genu varum  
Valgus osteotomy

# Coventry valgus osteotomy



# Deformity of the leg

- Crus varum
- Crus valgum
- Crus antecurvatum
- Crus recurvatum
- External rotation deformity



Paget disease