

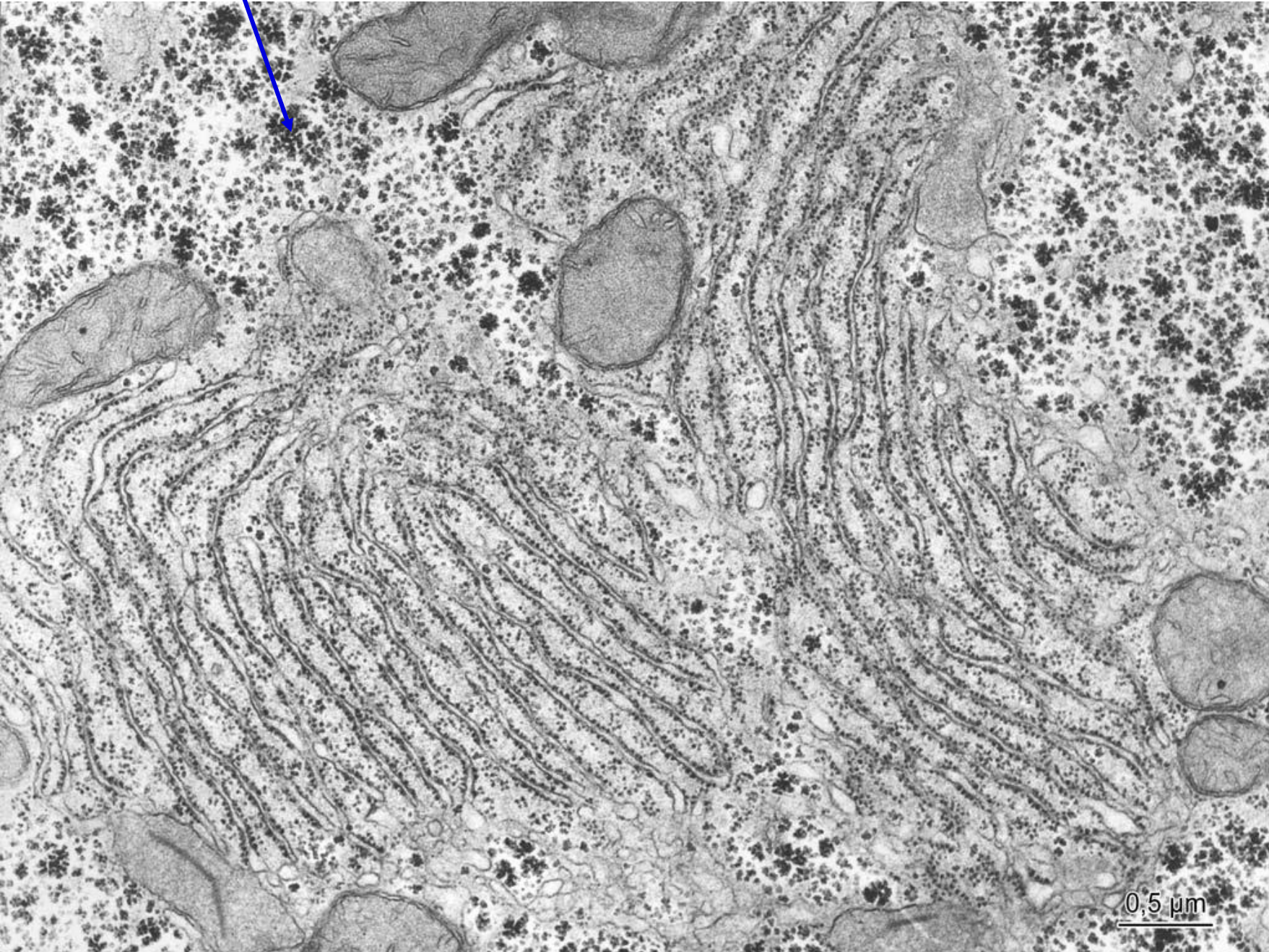
M U N I
M E D

CYTOLOGY II

Cell inclusions. Cytoskeleton. Modifications of cell surfaces. Intercellular junctions.

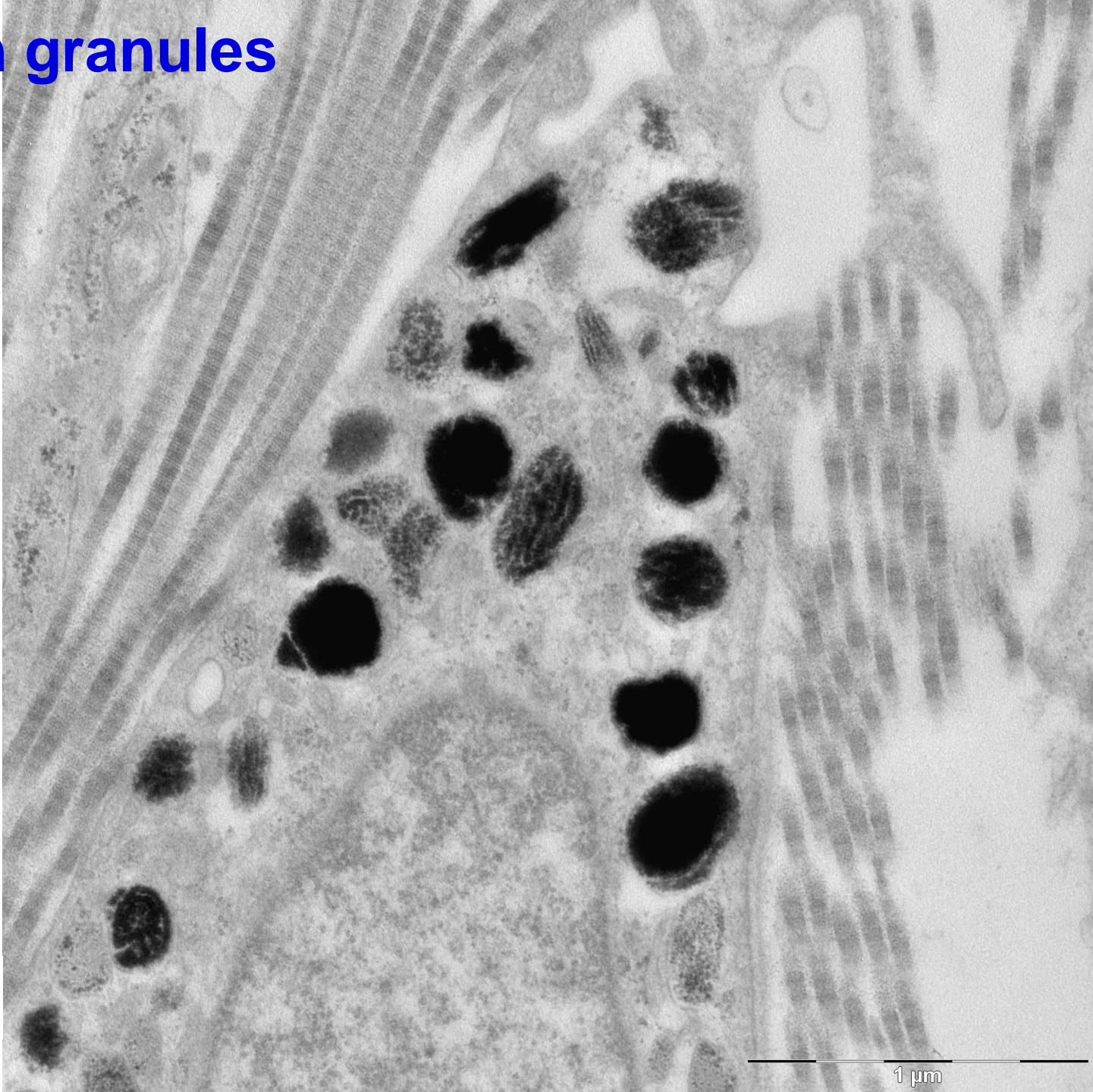
ATLAS OF CYTOLOGY AND EMBRYOLOGY

glycogen – α granules



N I
D

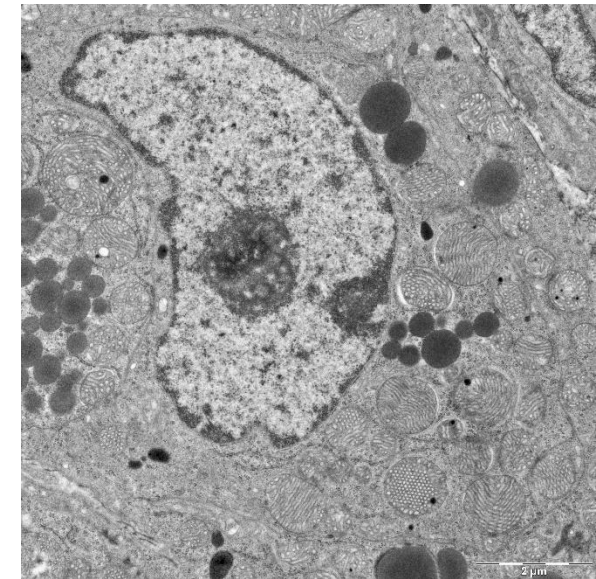
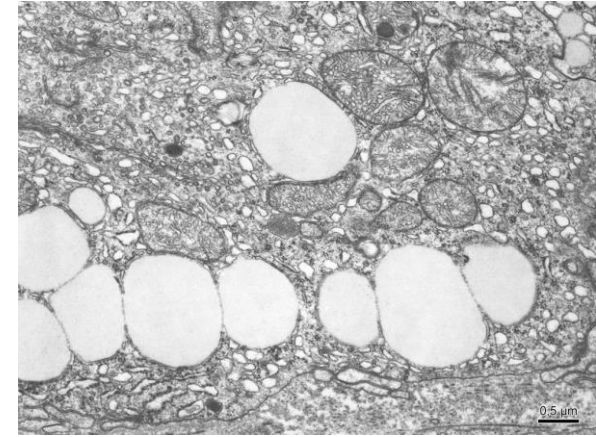
melanin granules



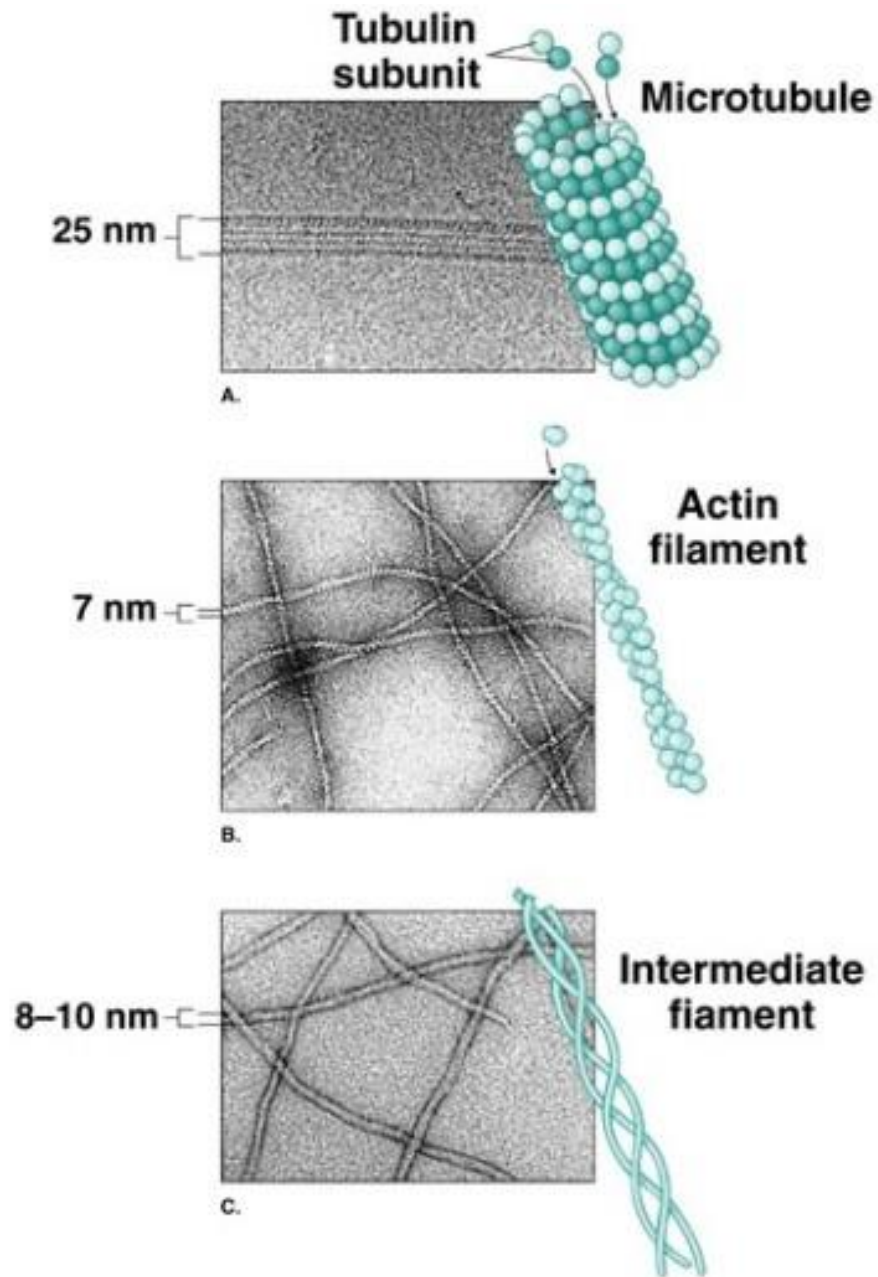
1 μ m

N I
D

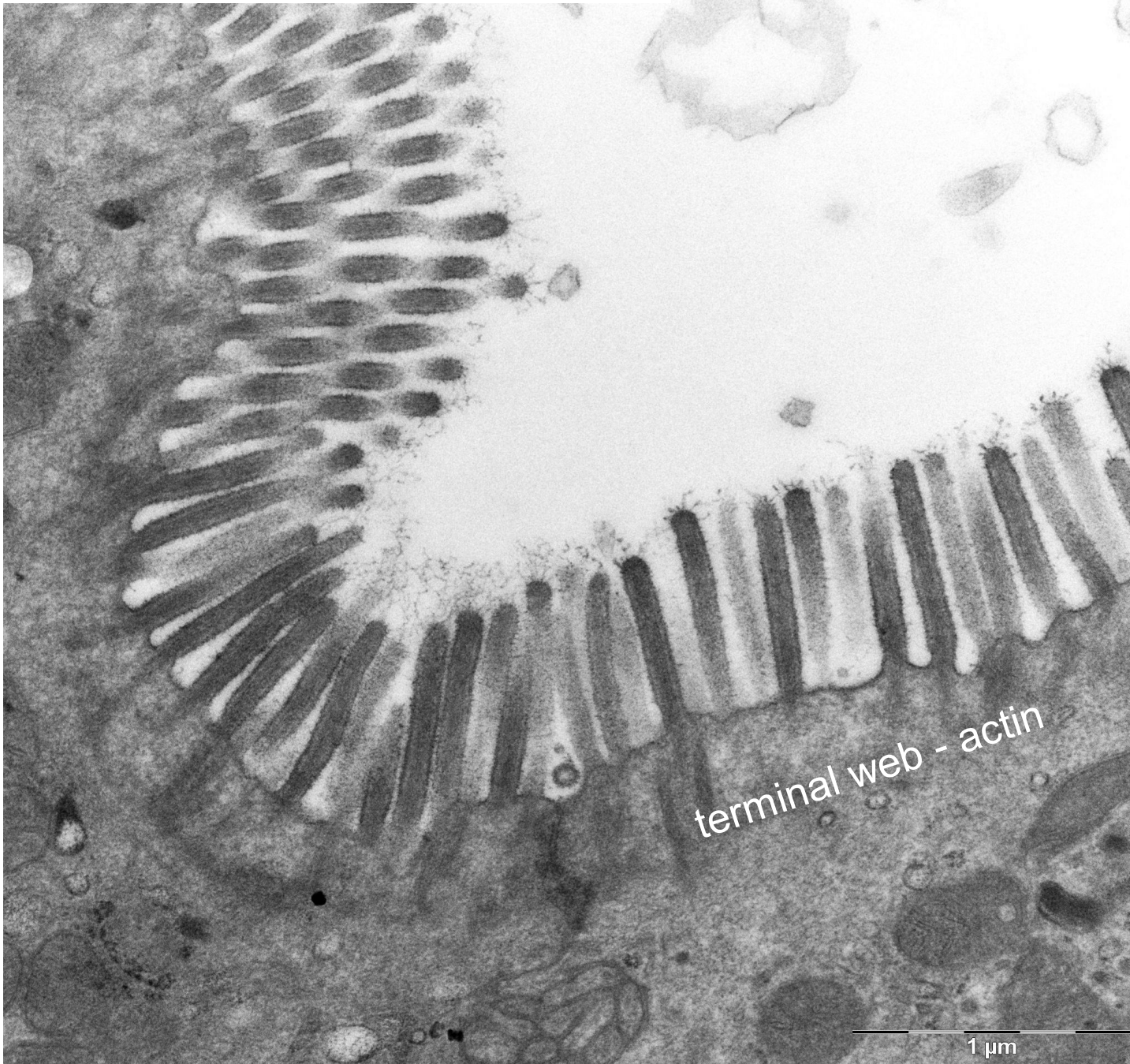
lipid droplets



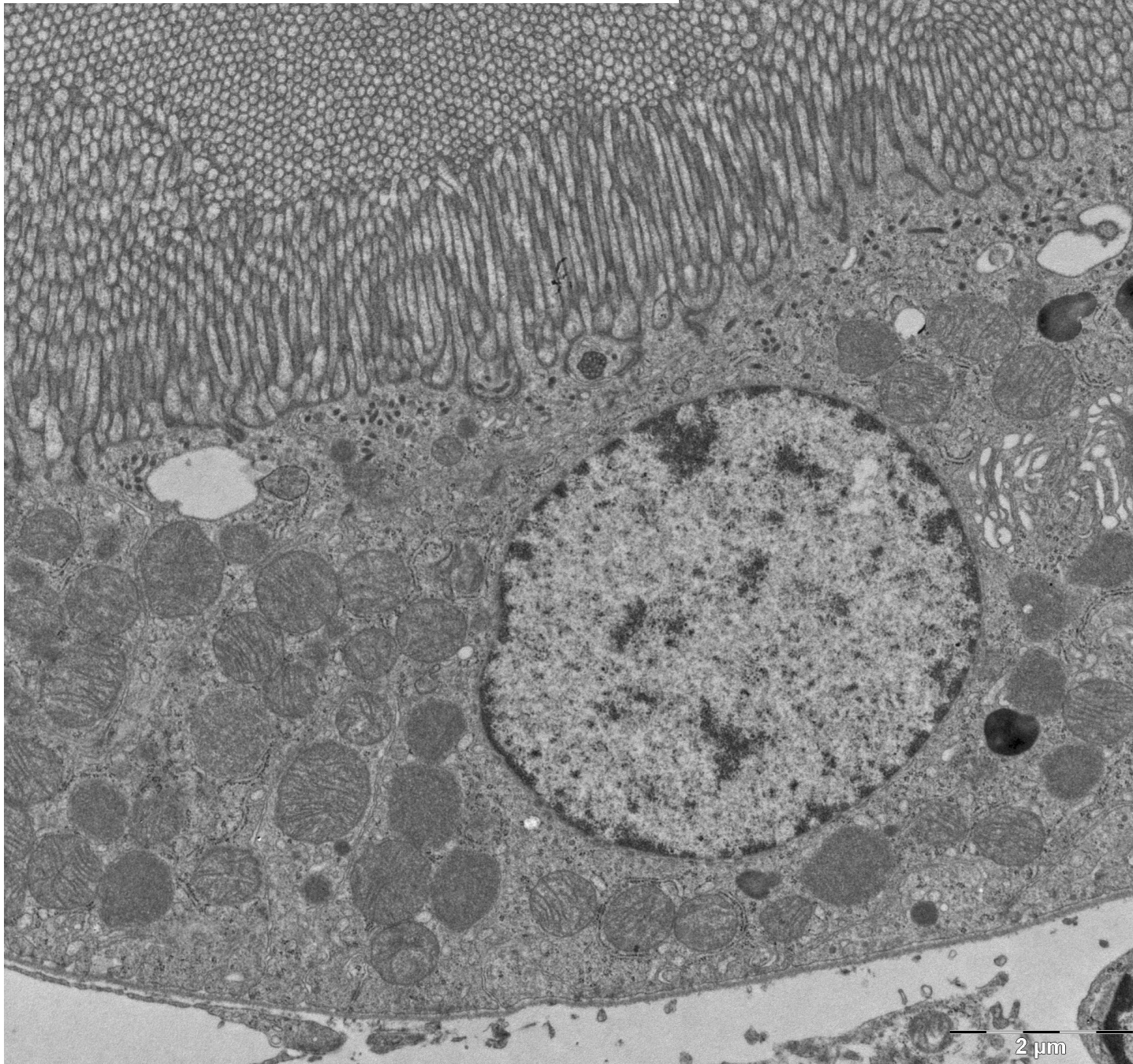
steroidogenic cells



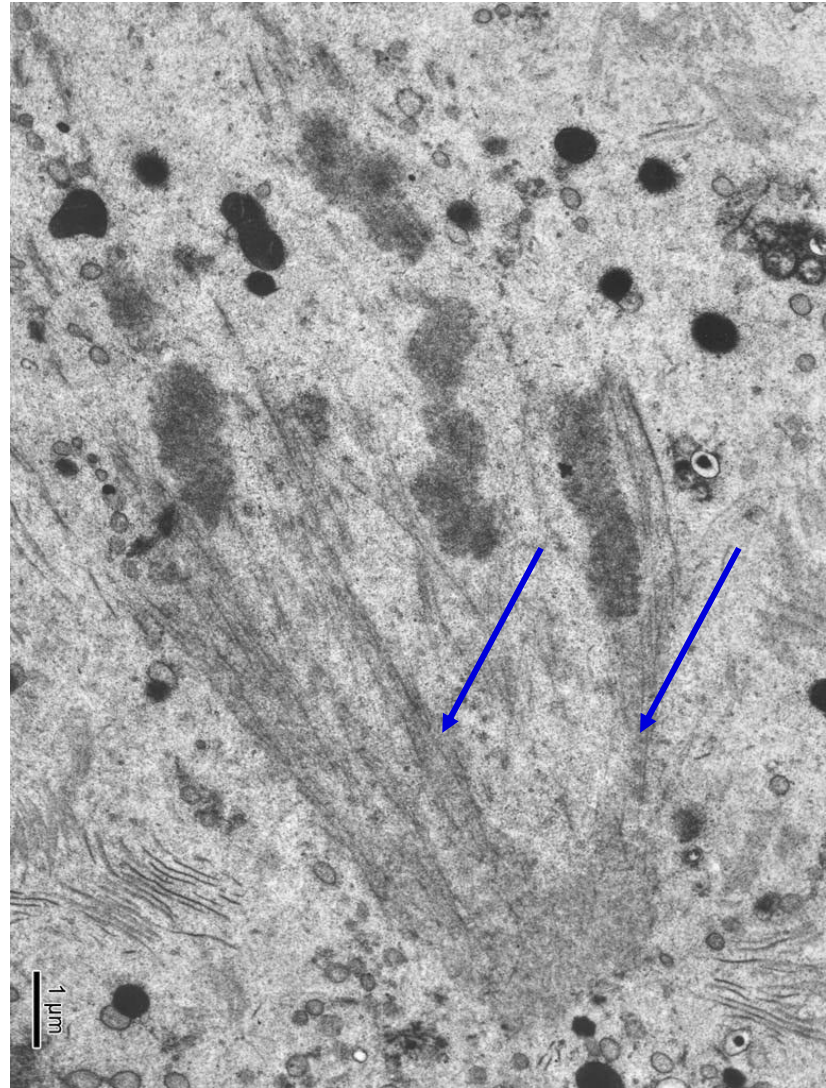
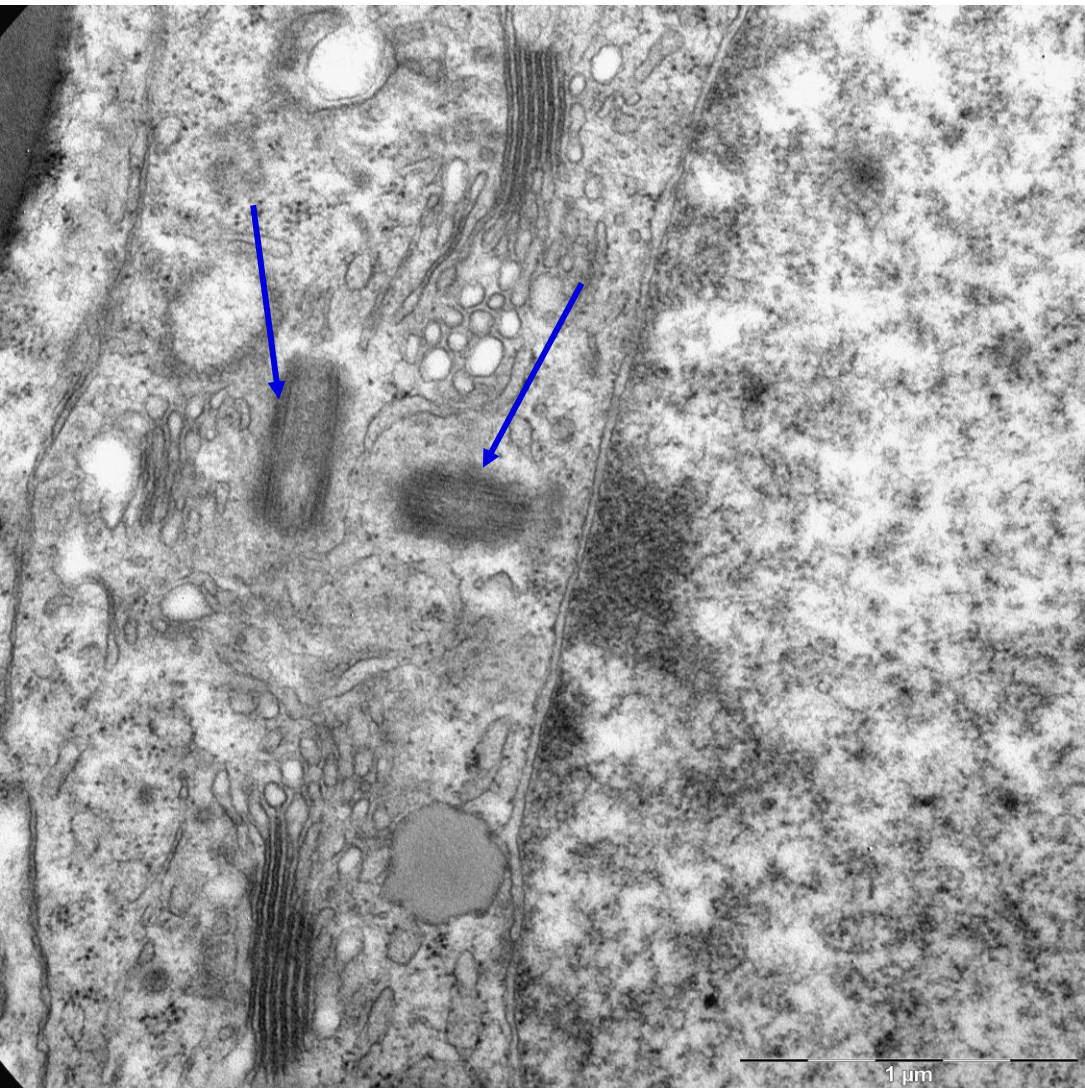
microvilli – striated border



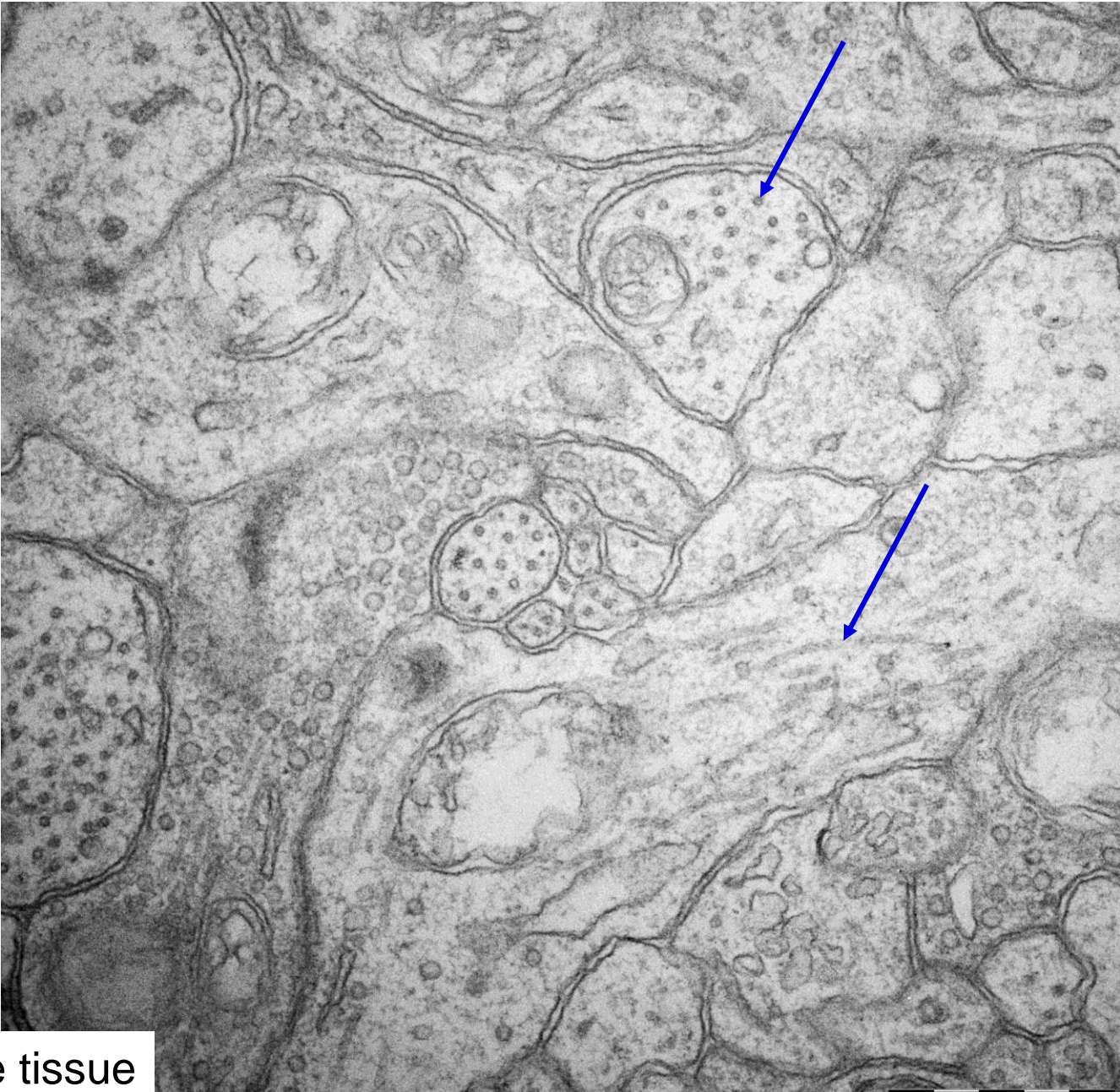
microvilli – brush border



microtubules

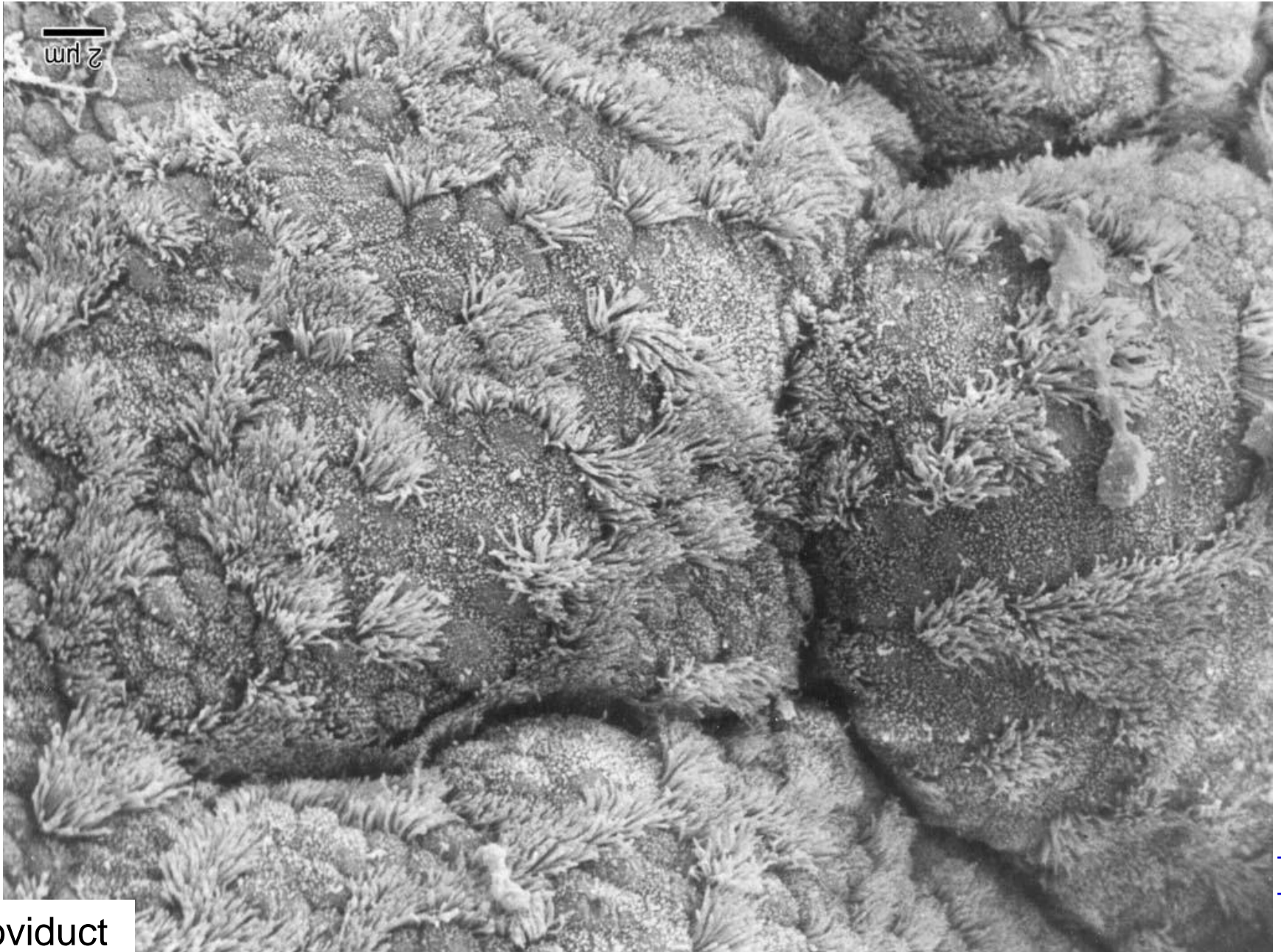


microtubules



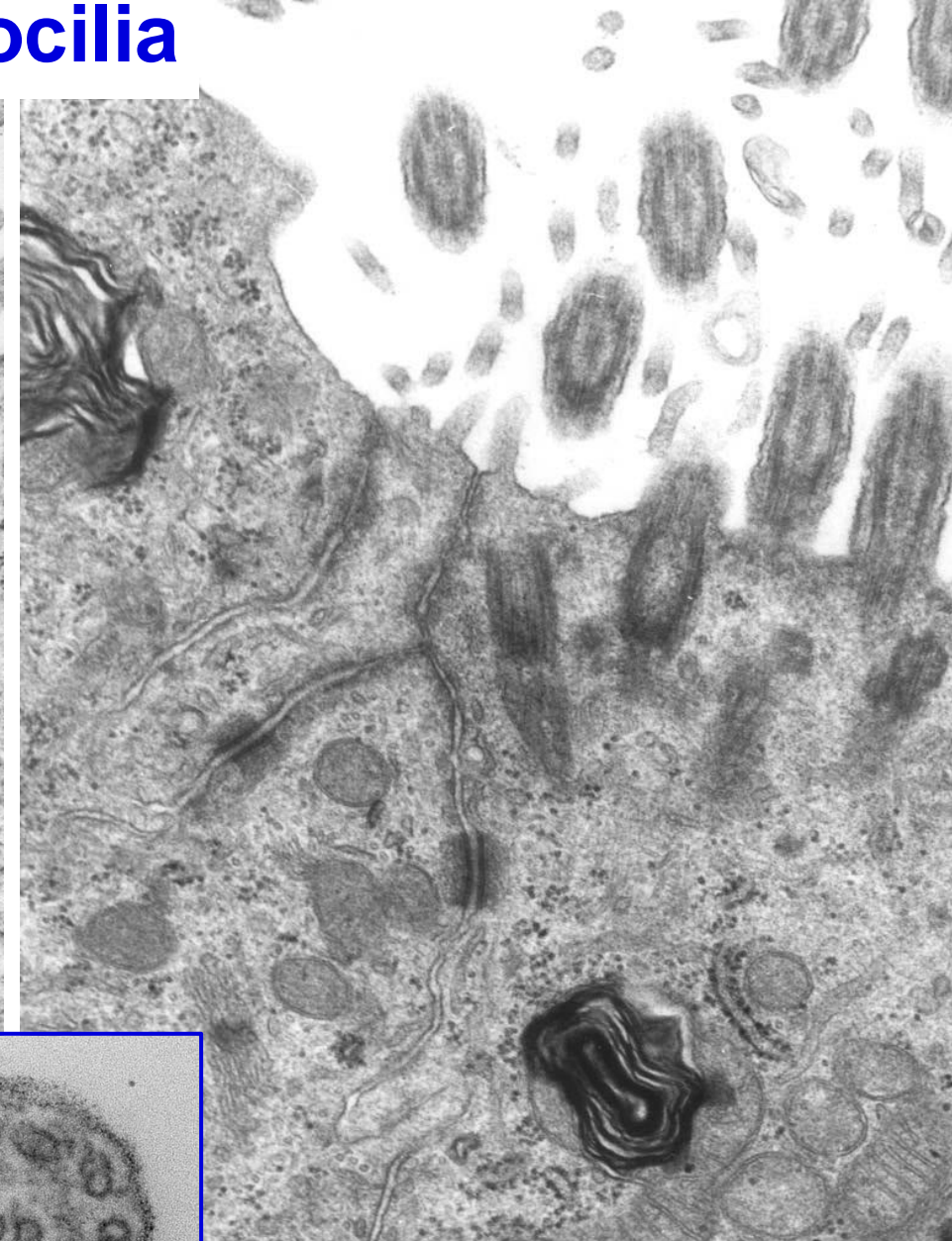
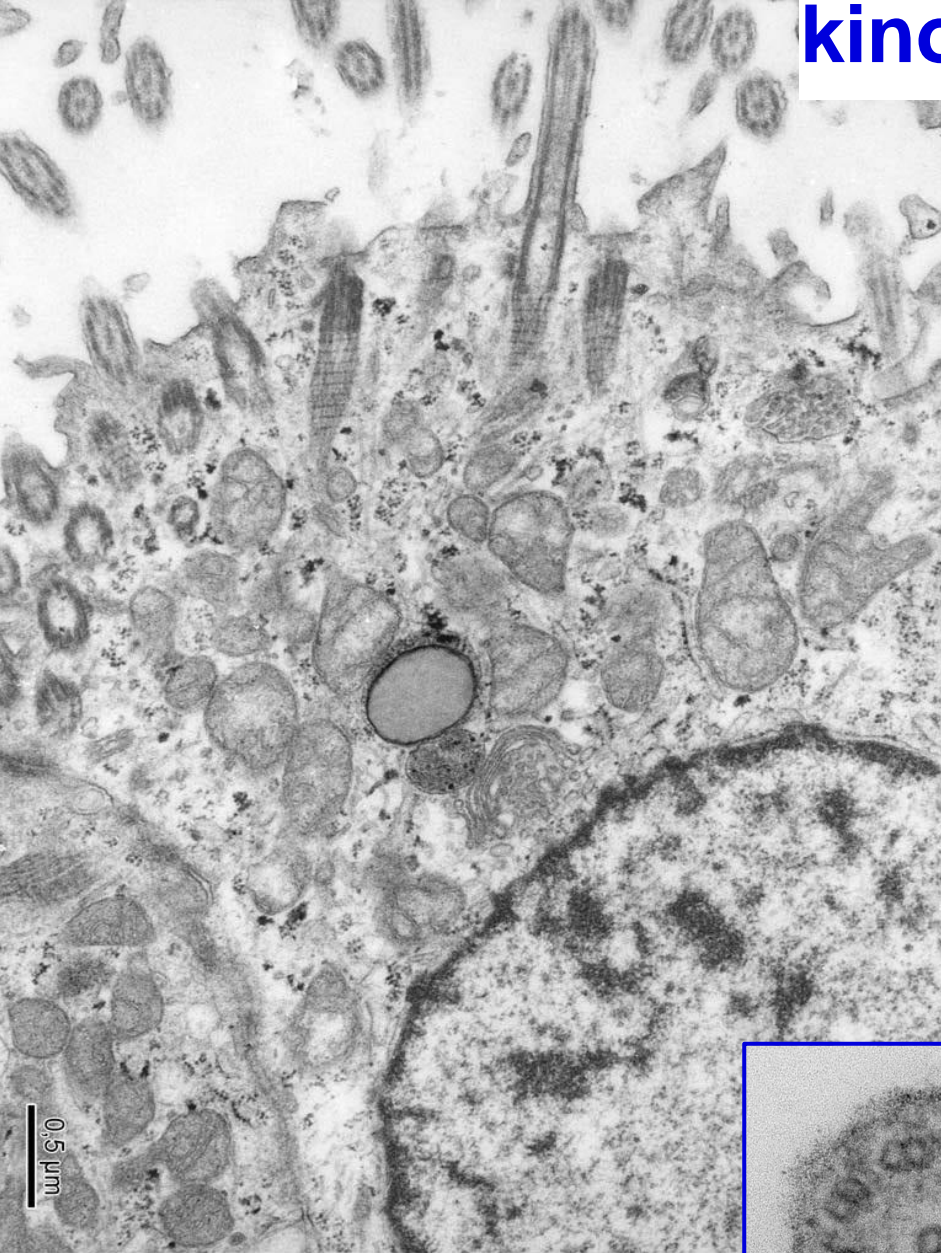
nerve tissue

microvilli and kinocilia

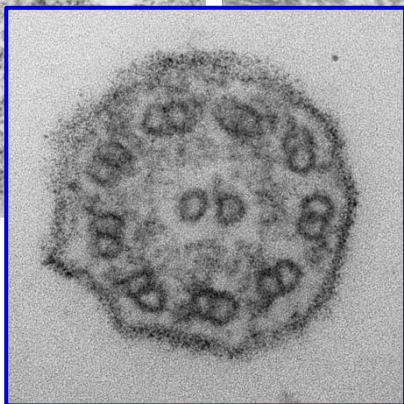


oviduct

kinocilia

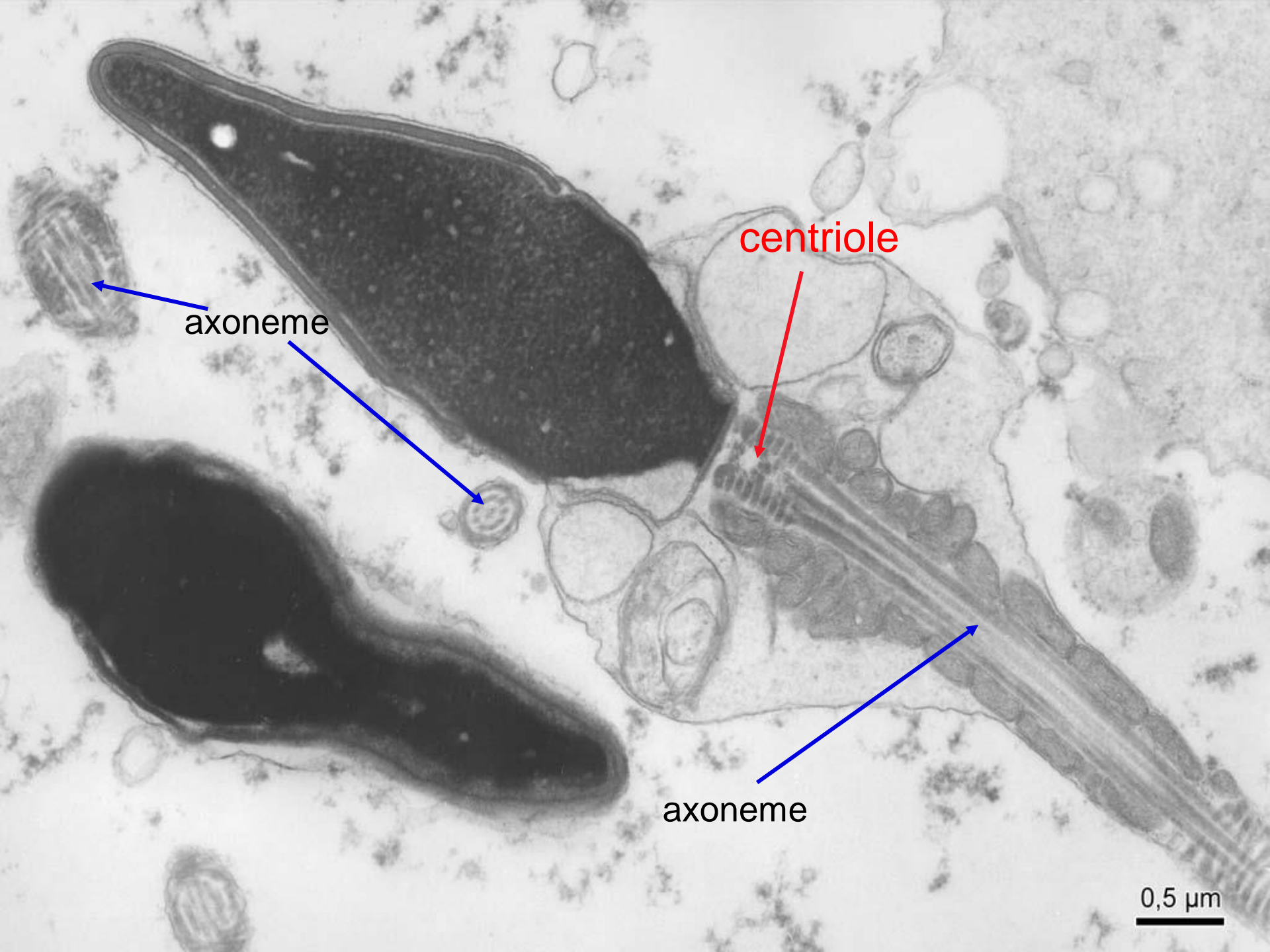


0.5 μm



axoneme

MUNI
MED



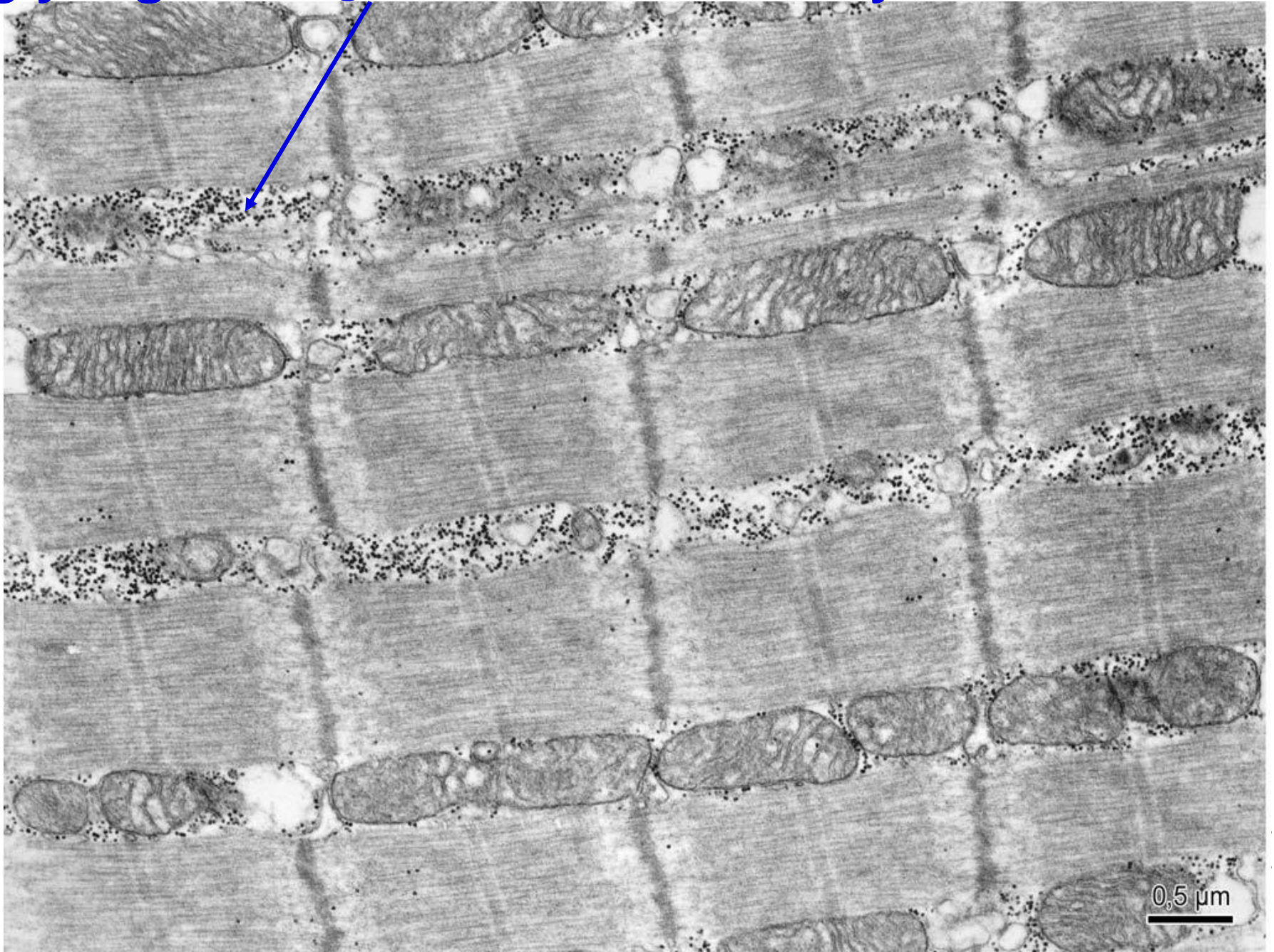
axoneme

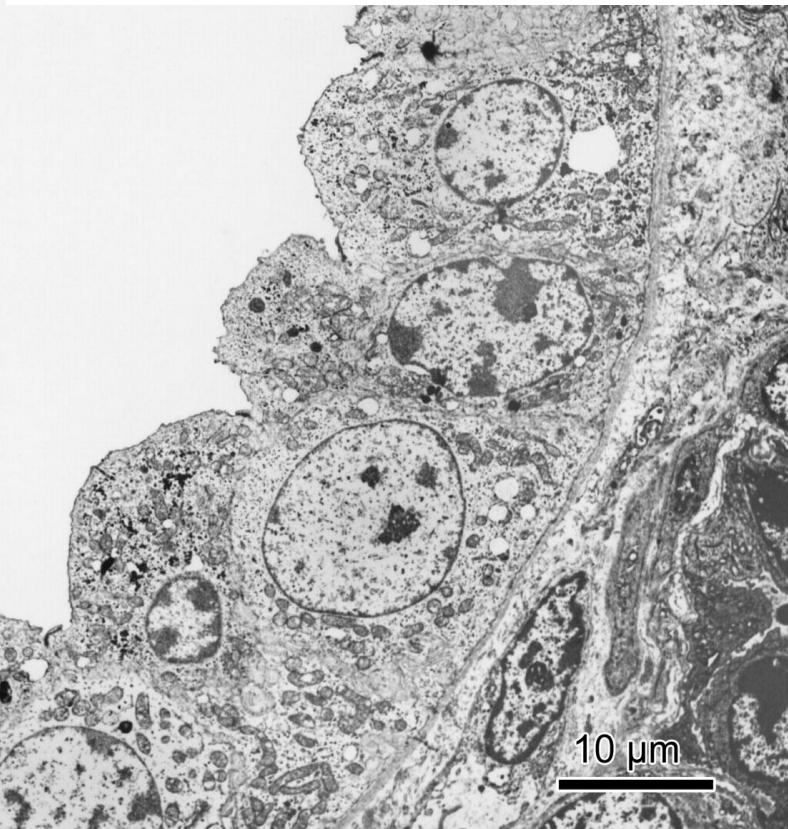
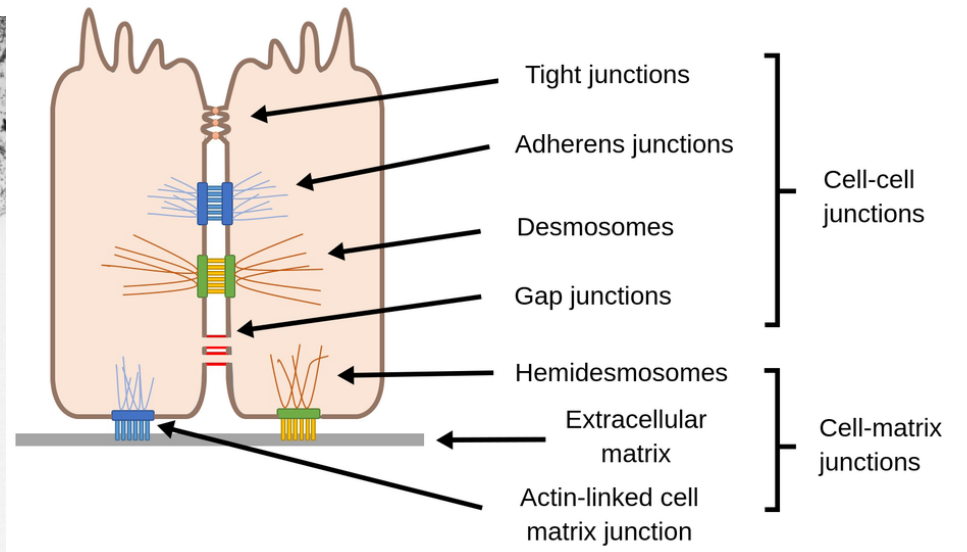
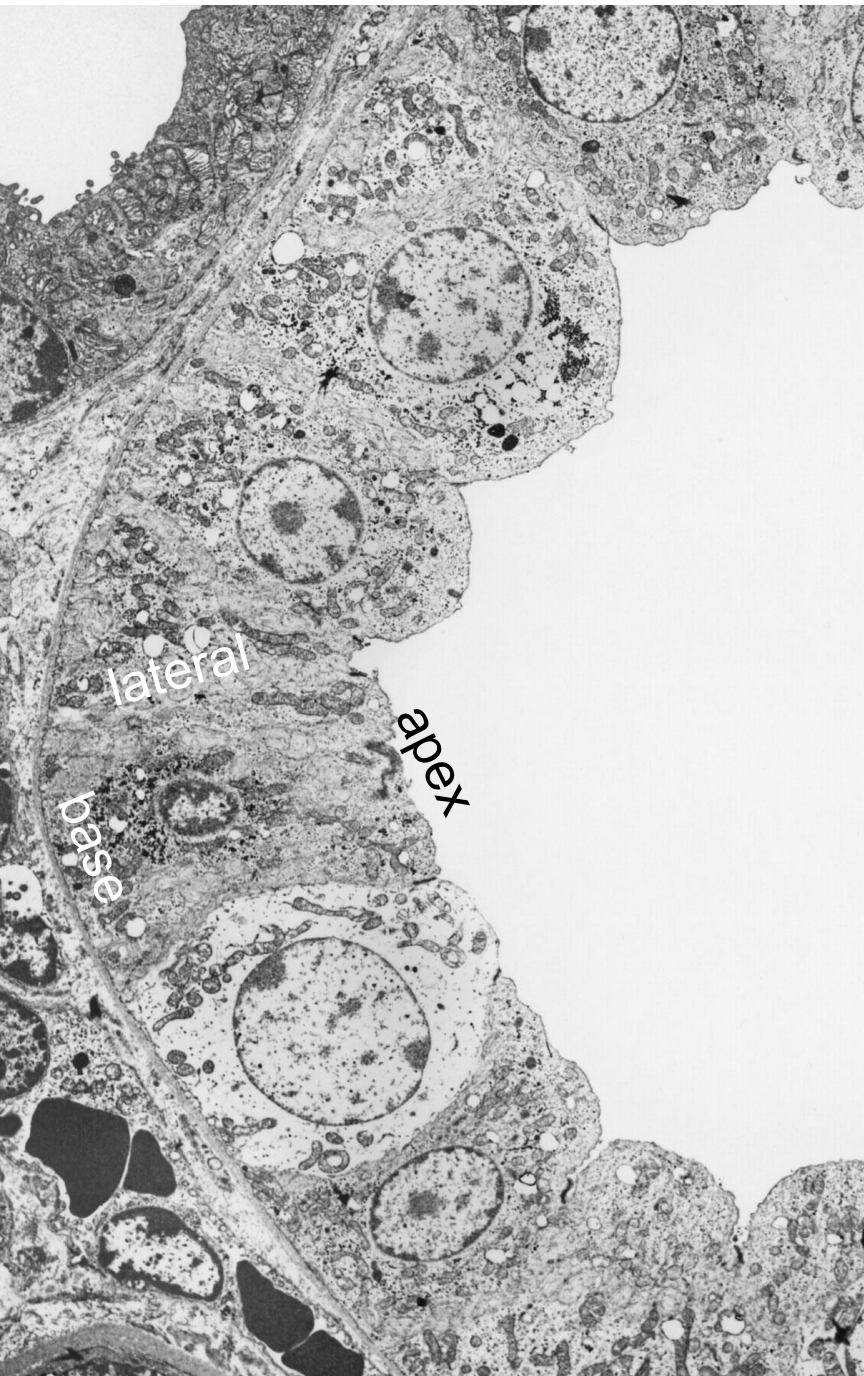
centriole

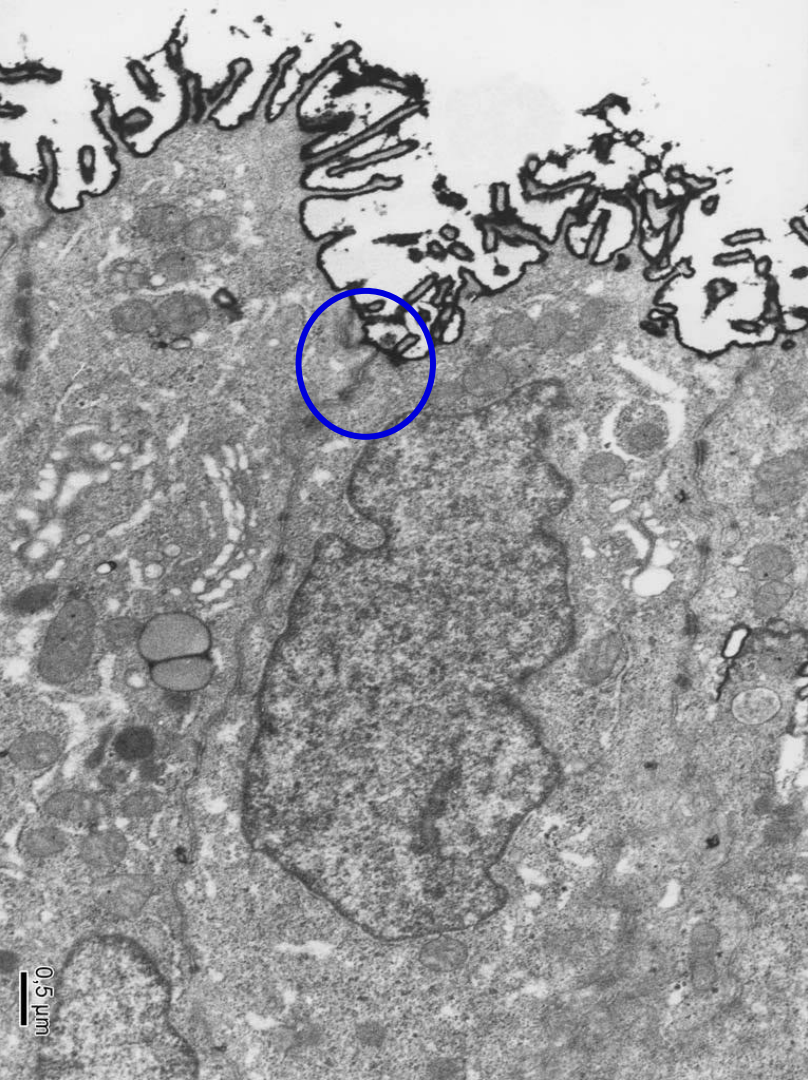
axoneme

0,5 μm

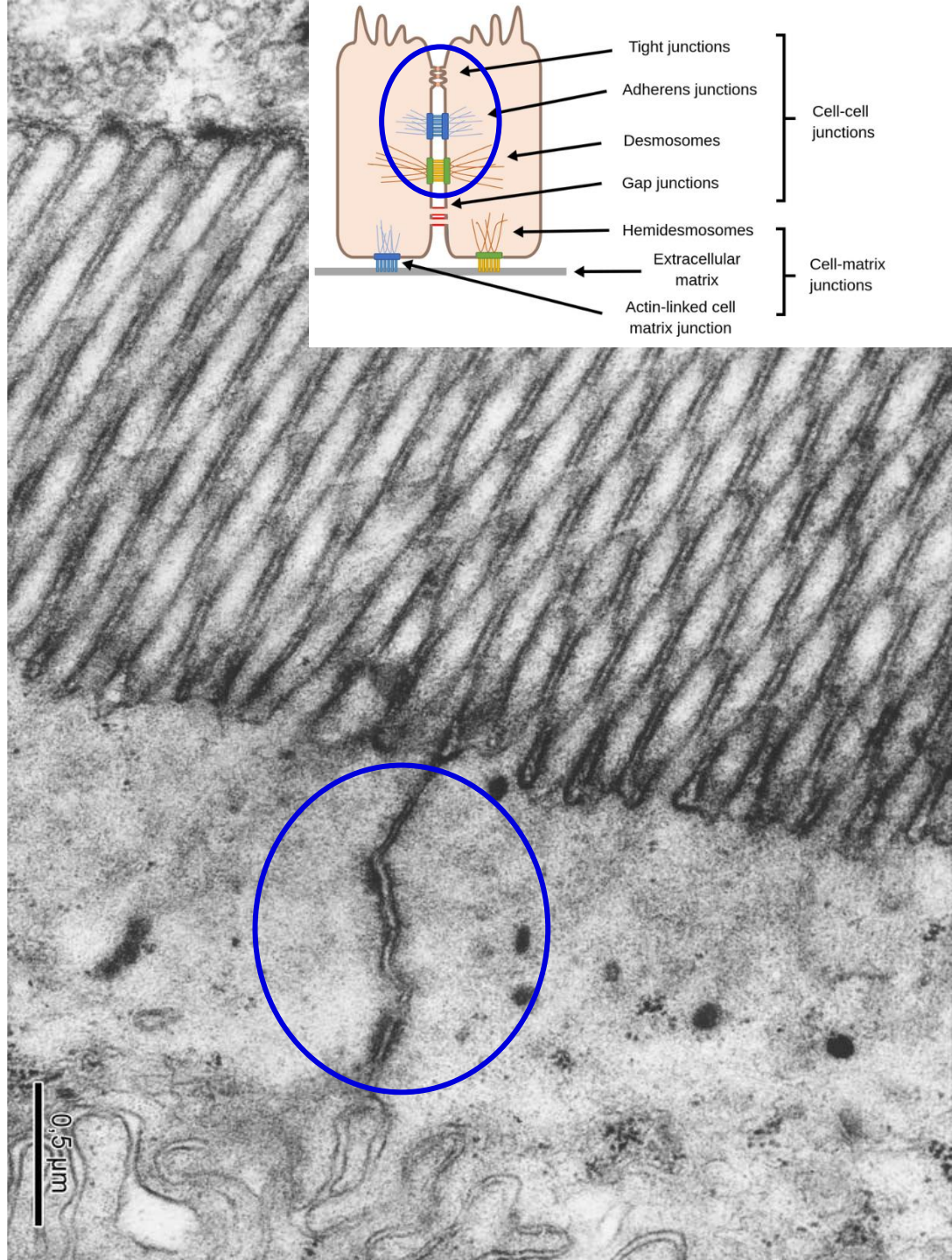
glycogen – β granules, actin and myosin filaments



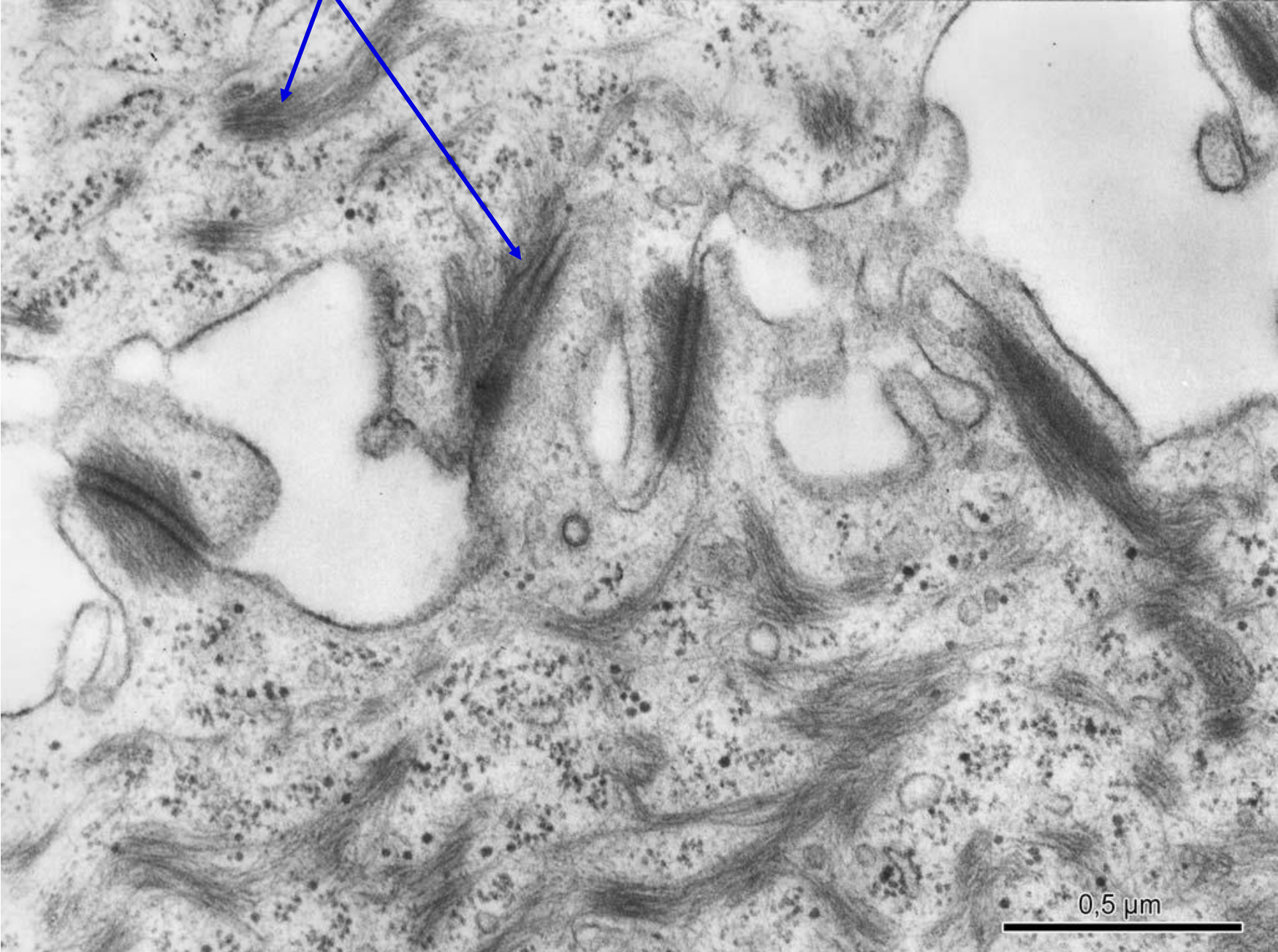




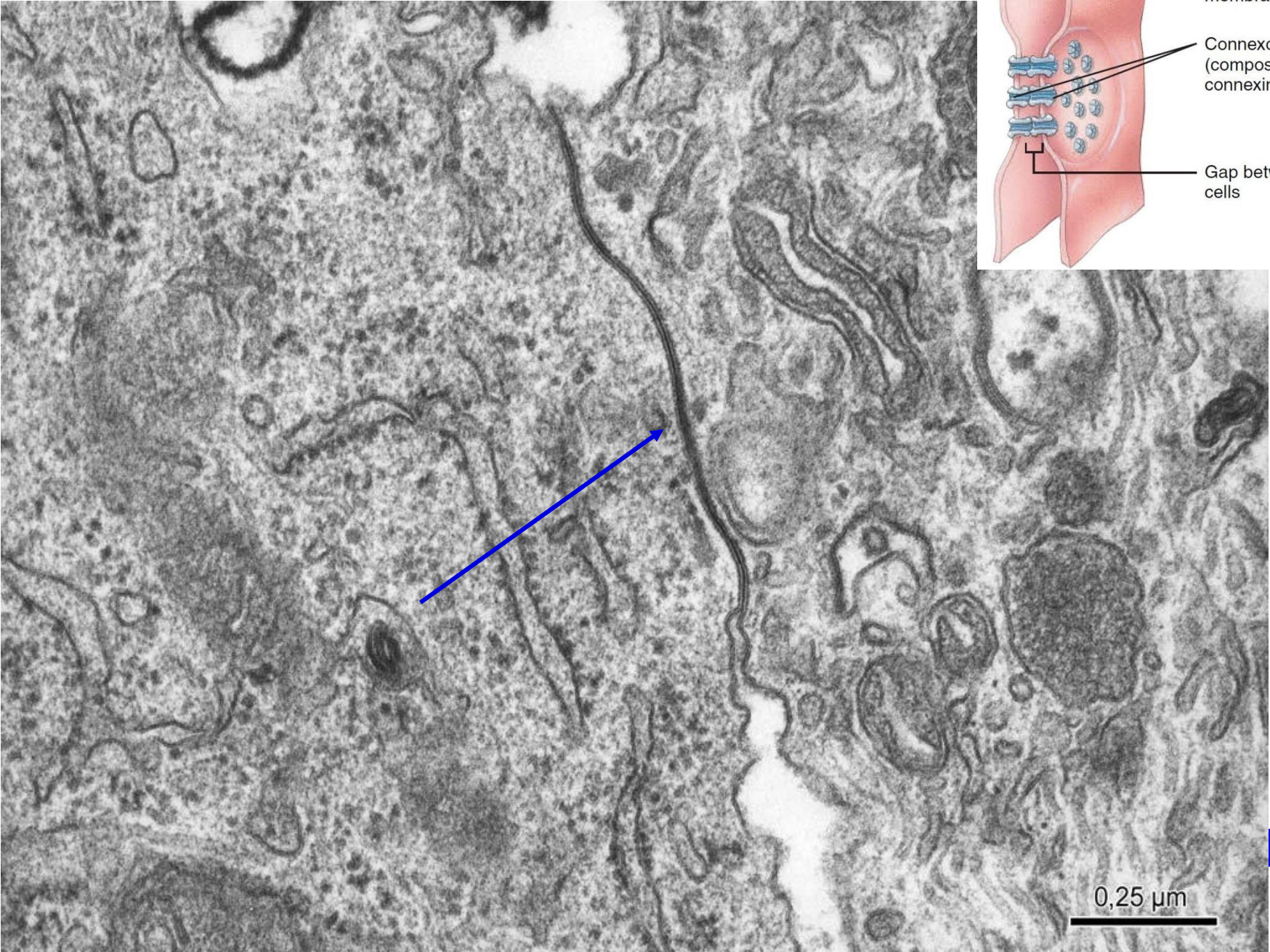
terminal bar



intermediate filaments

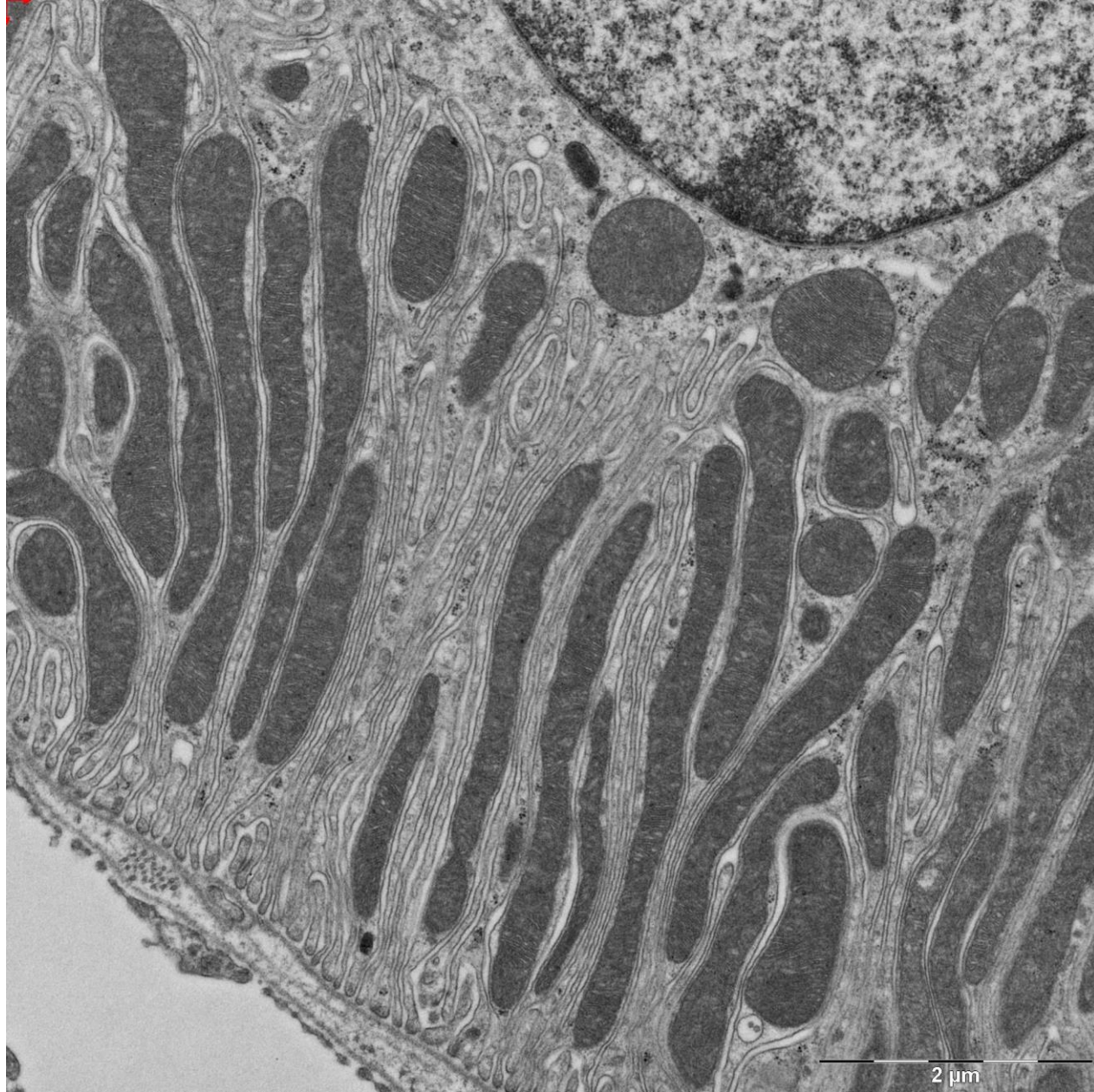


nexus



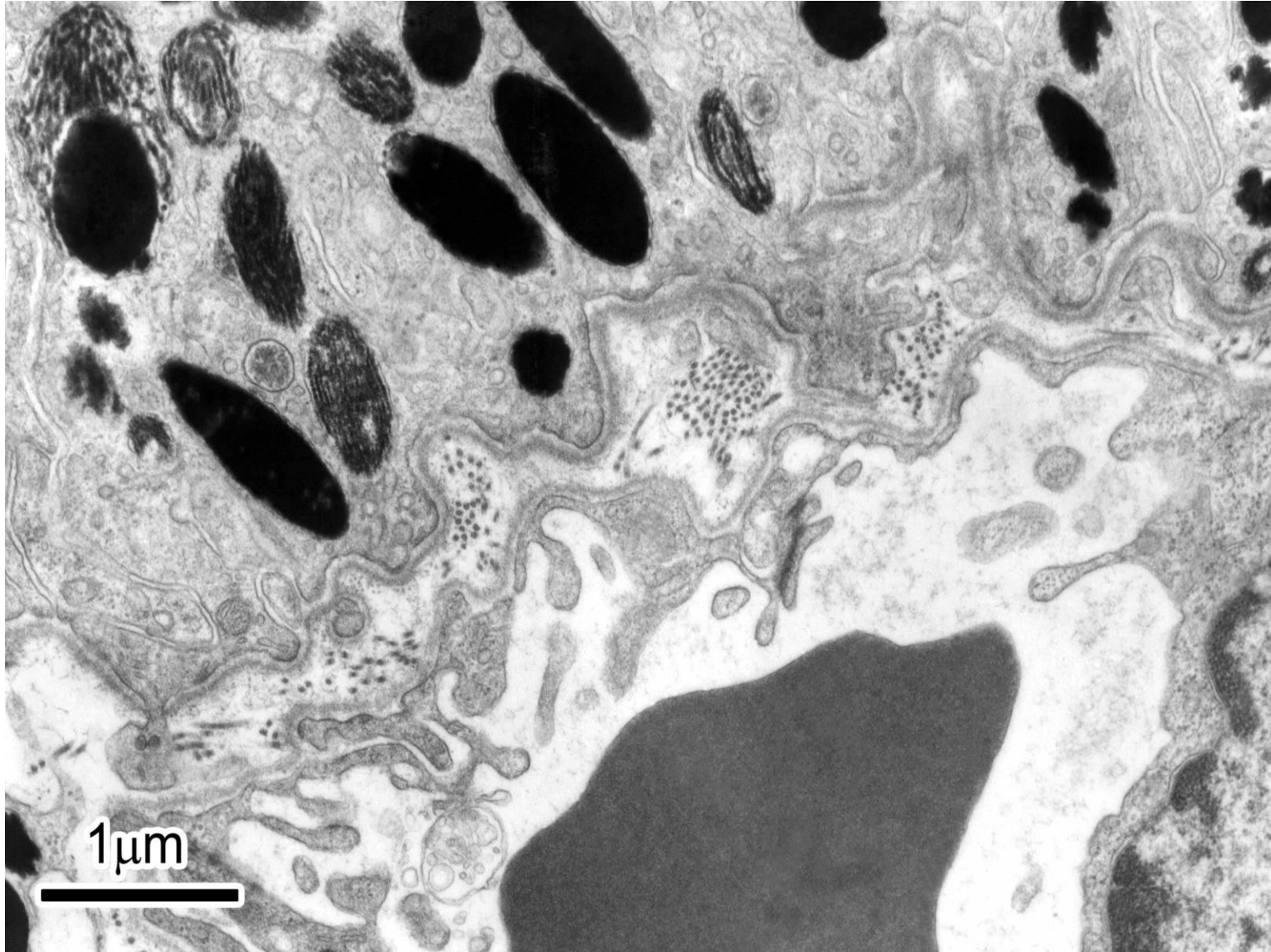
basal labyrinth

– invaginations of membrane + mitochondria



basement membrane

- *lamina basalis – lamina lucida + lamina densa*
- *lamina fibroreticularis*



CYTOLOGY II

- cell inclusions
 - glycogen (α - and β - granules)
 - lipid droplets
- cytoskeleton
 - actin filaments
 - intermediate filaments
 - microtubules
- cell surfaces
- microvilli
- kinocilia
- terminal bar
- desmosome
- nexus
- basal labyrinth
- basement membrane

Atlas: pages **12-27**

Web: https://is.muni.cz/do/rect/el/estud/lf/js18/histologie_atlas/web/atlas_OH_en.html?chapter=0

MUNI MED Department of Histology and Embryology		Protocol No.: _____	
Protocol title: _____			
UCO/Name: _____			
Study program/year: _____		Study group: _____	Date: _____
List of slides (Box):		List of electronograms (Atlas)	
Number	Title of slide and used staining	Number	Title of <u>electronogram</u>
.....
.....
.....
.....
.....
.....
.....
.....
.....
.....
.....
.....
.....
Guidelines for protocol preparation			
1. Protocol shall complement theoretical knowledge with real microscopic observations. As such it contains color diagrams of histological slides, or black and white diagrams of electronograms of EM atlas, and if applicable, also answers to theoretical questions.			