

CONNECTIVE TISSUE PROPER

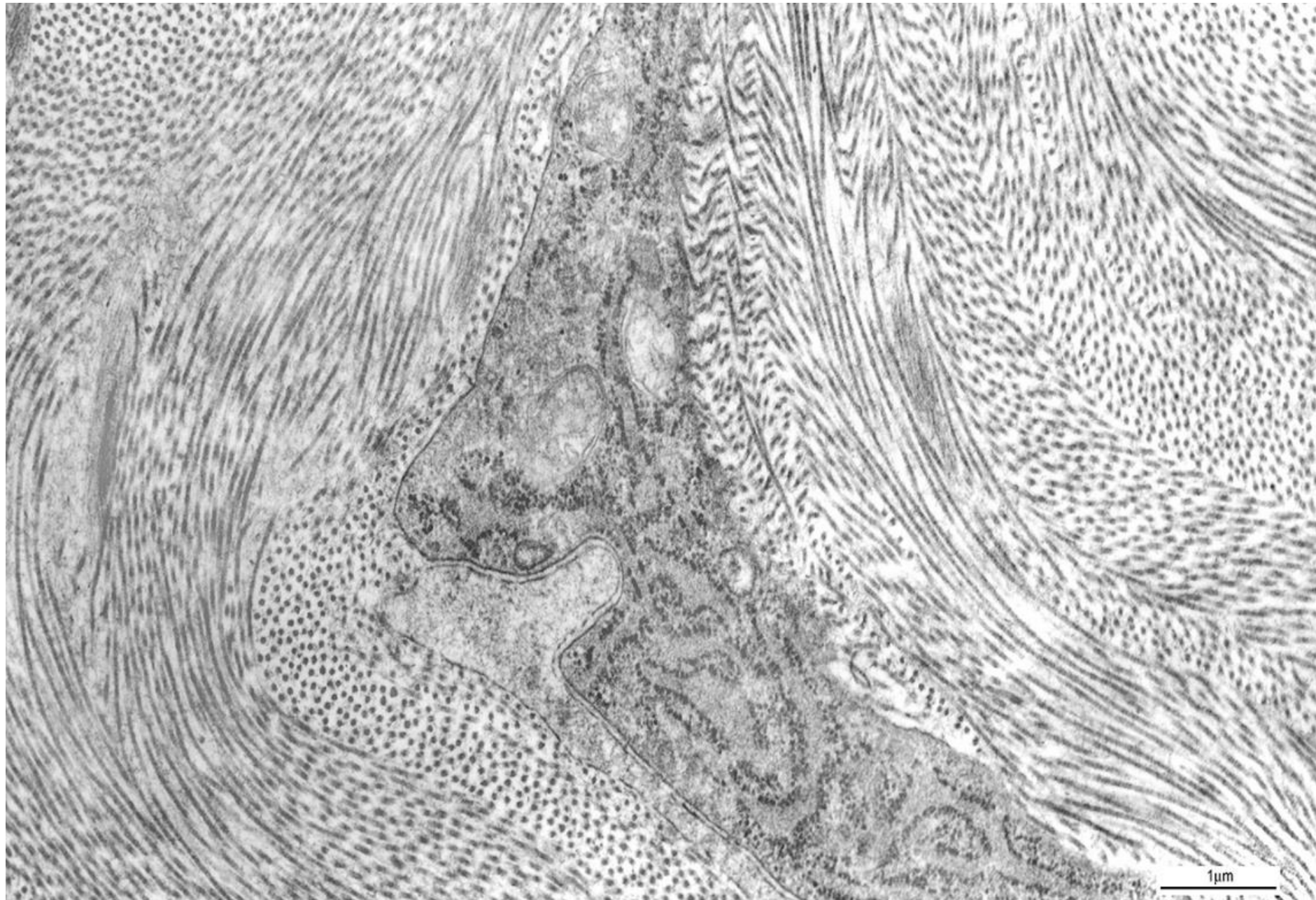
Connective tissue cells

Extracellular matrix – fibres

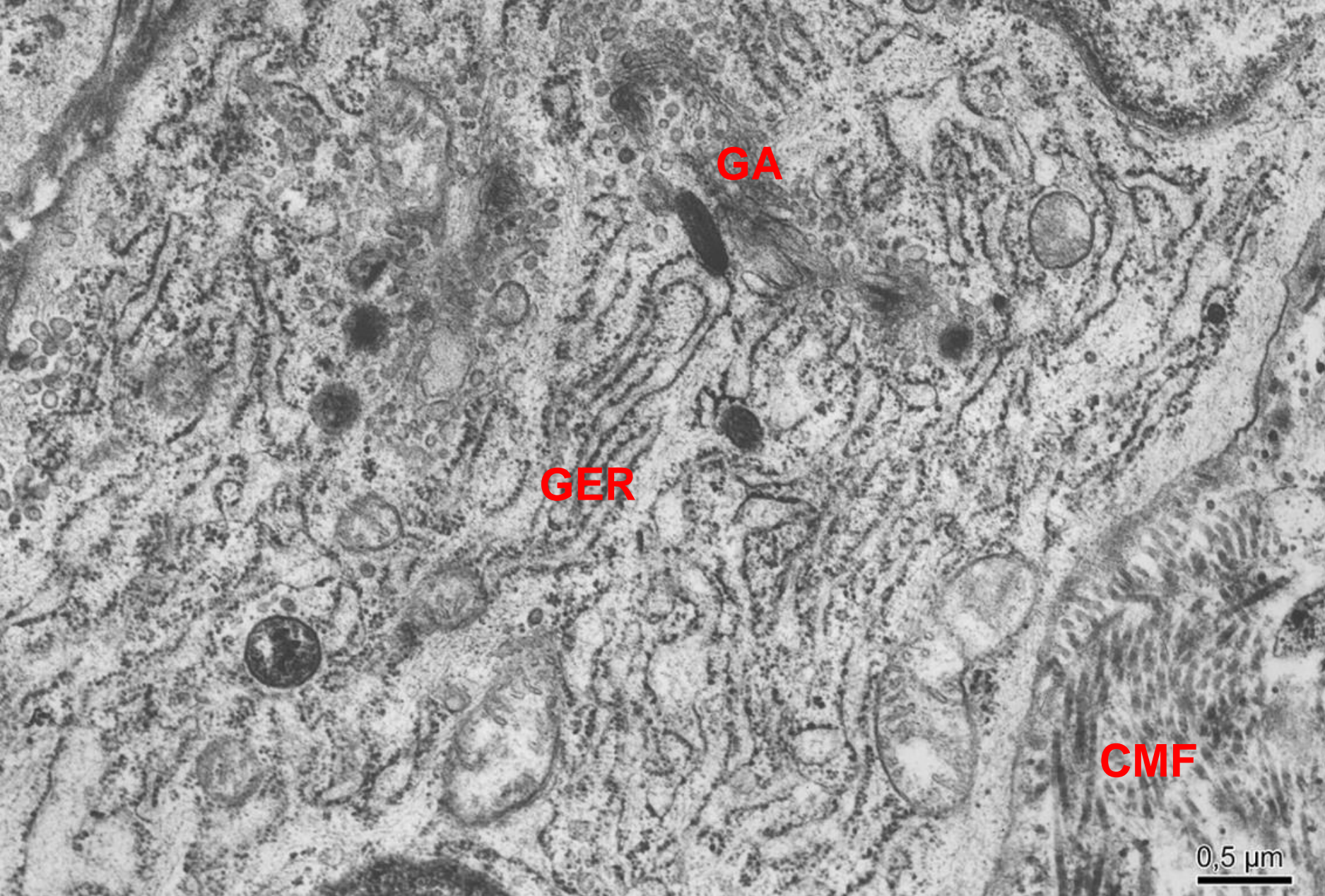
- ground substance

Classification of connective tissue

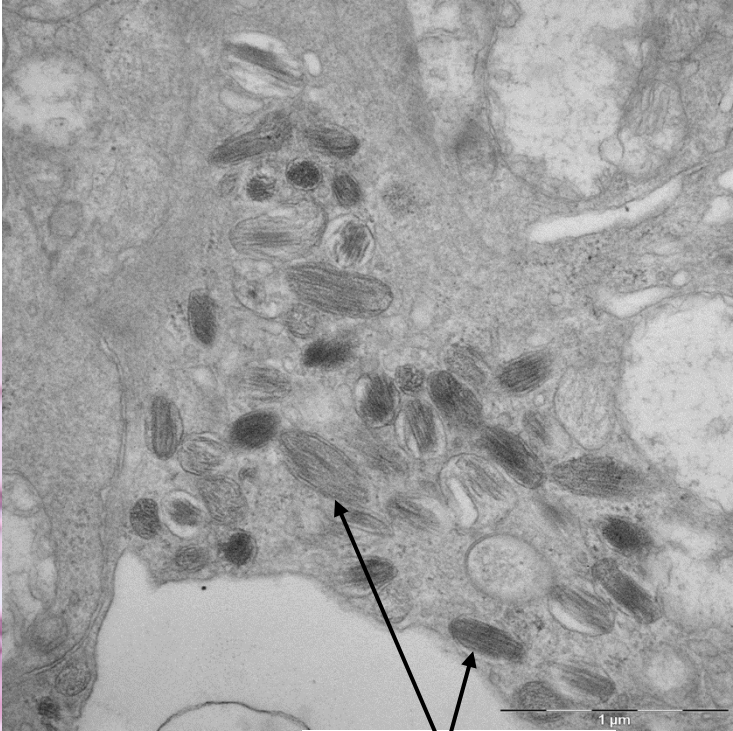
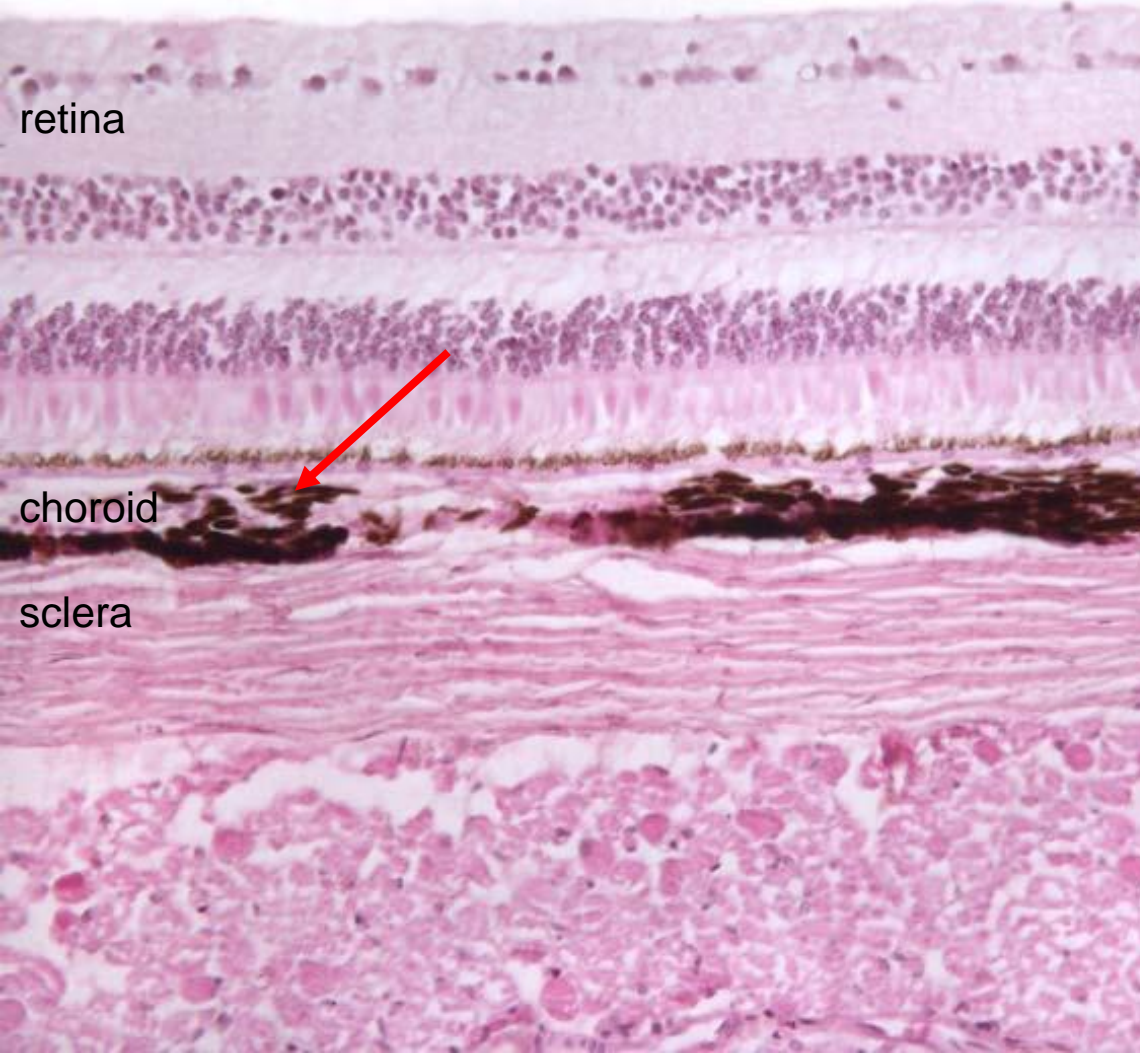
Fibroblast + collagen fibrils



Fibroblast – active cell



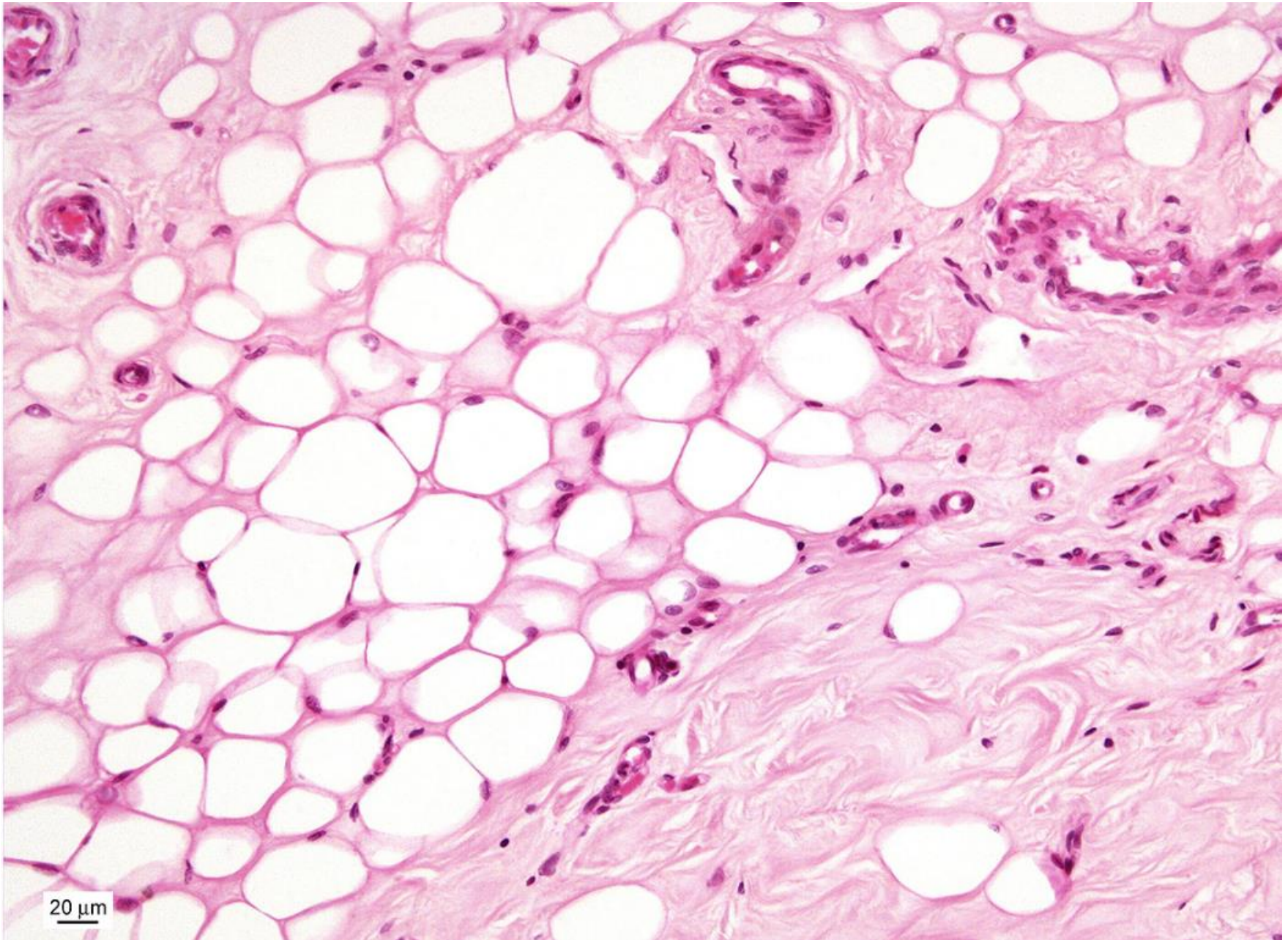
Pigment cells



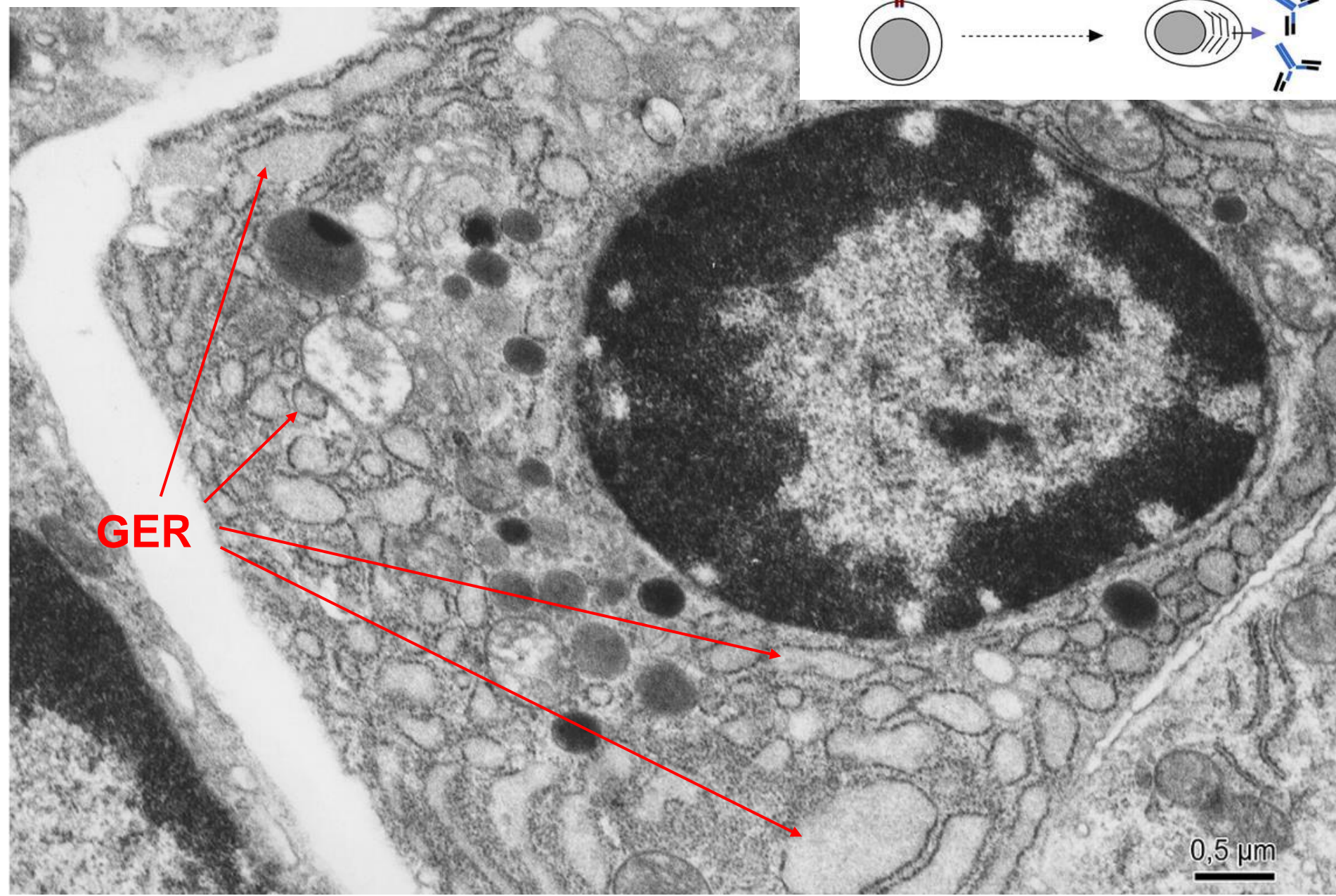
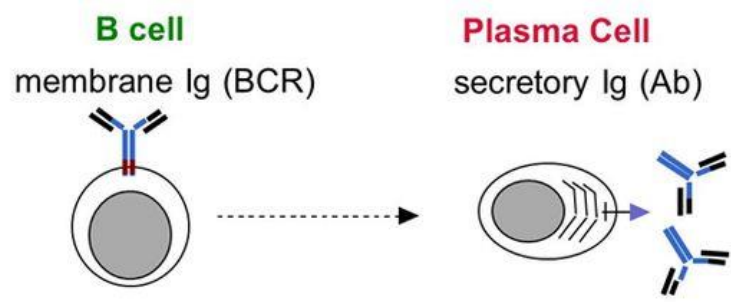
melanosomes

20 μ m

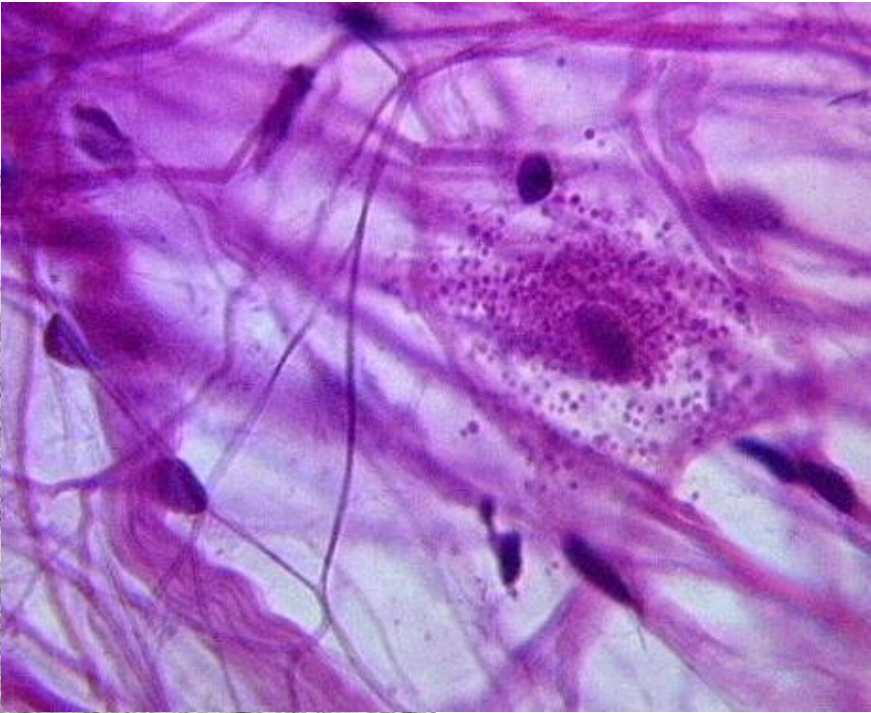
Adipocytes



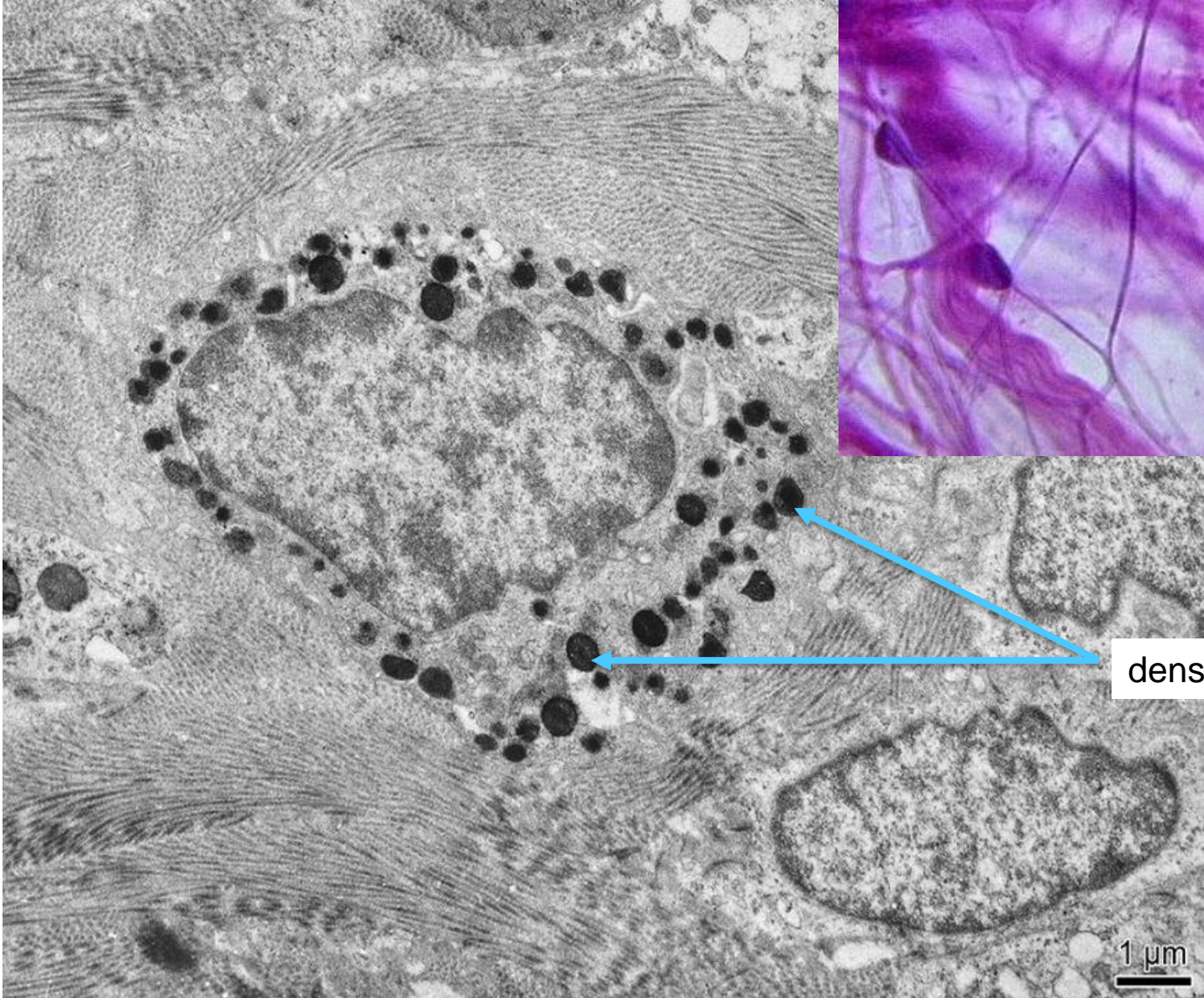
Plasma cell



Mast cell



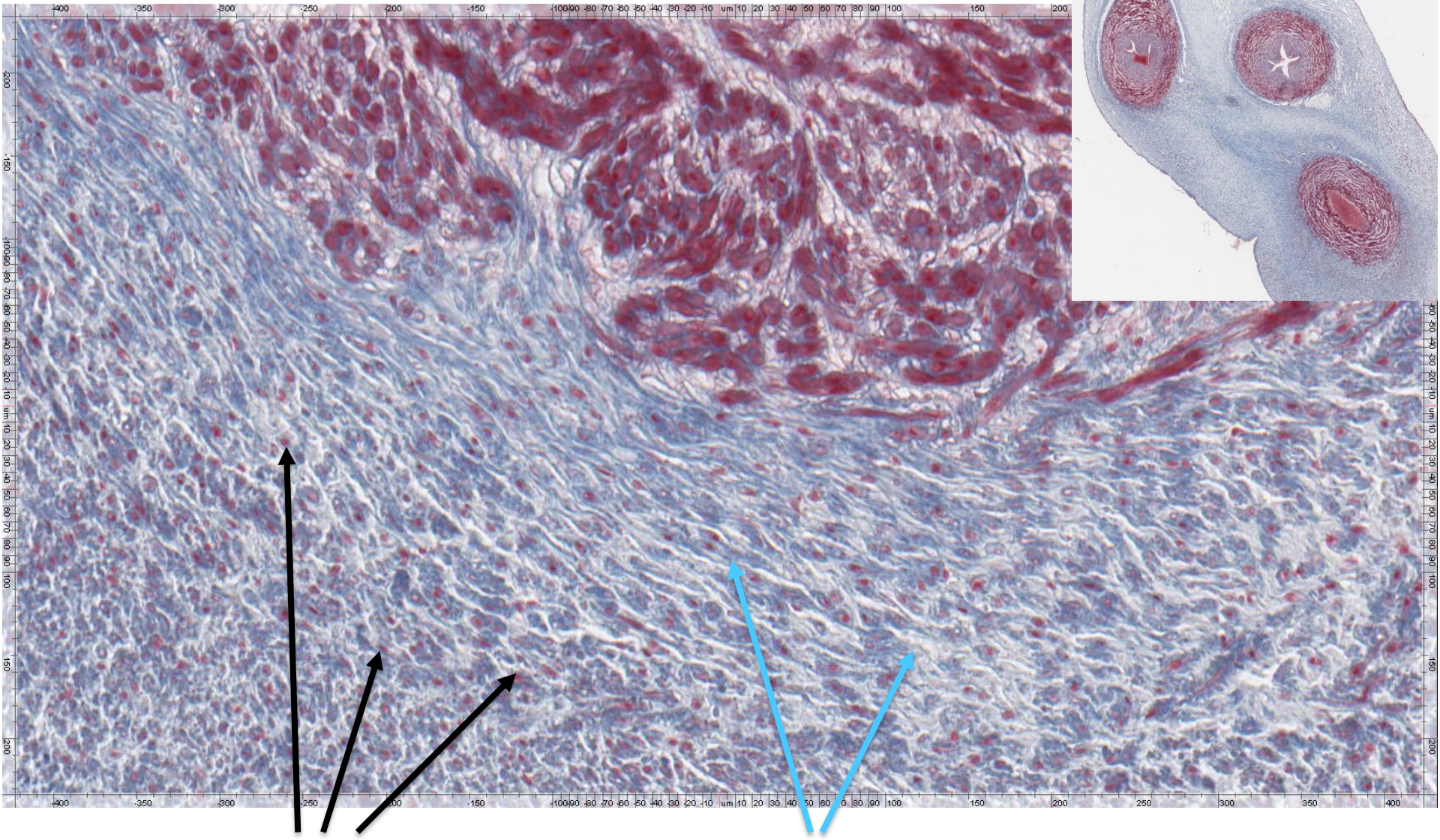
<http://www.gwc.maricopa.edu>



dense secretory granules

1 μm

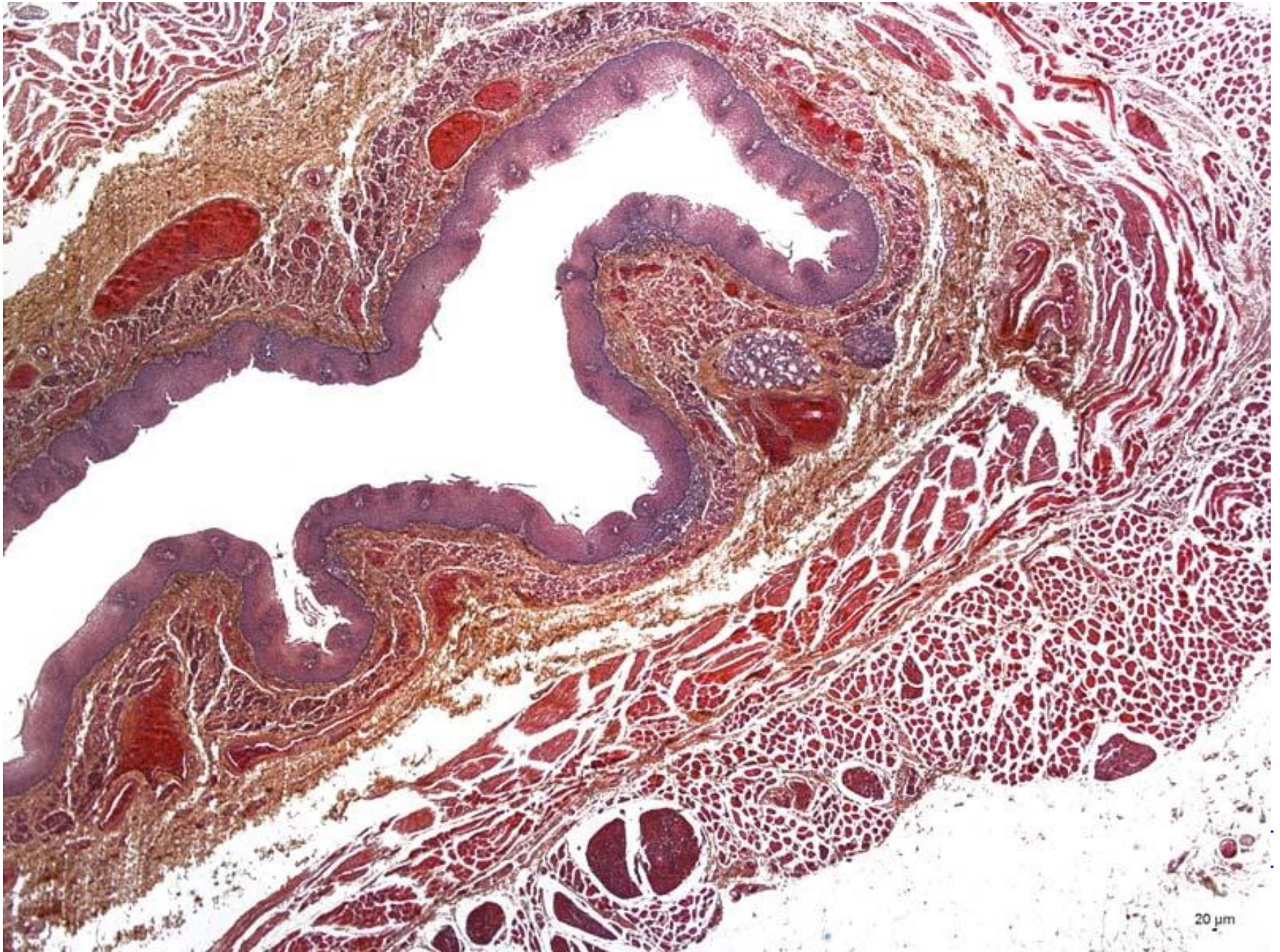
Wharton's jelly – funiculus umbilicalis



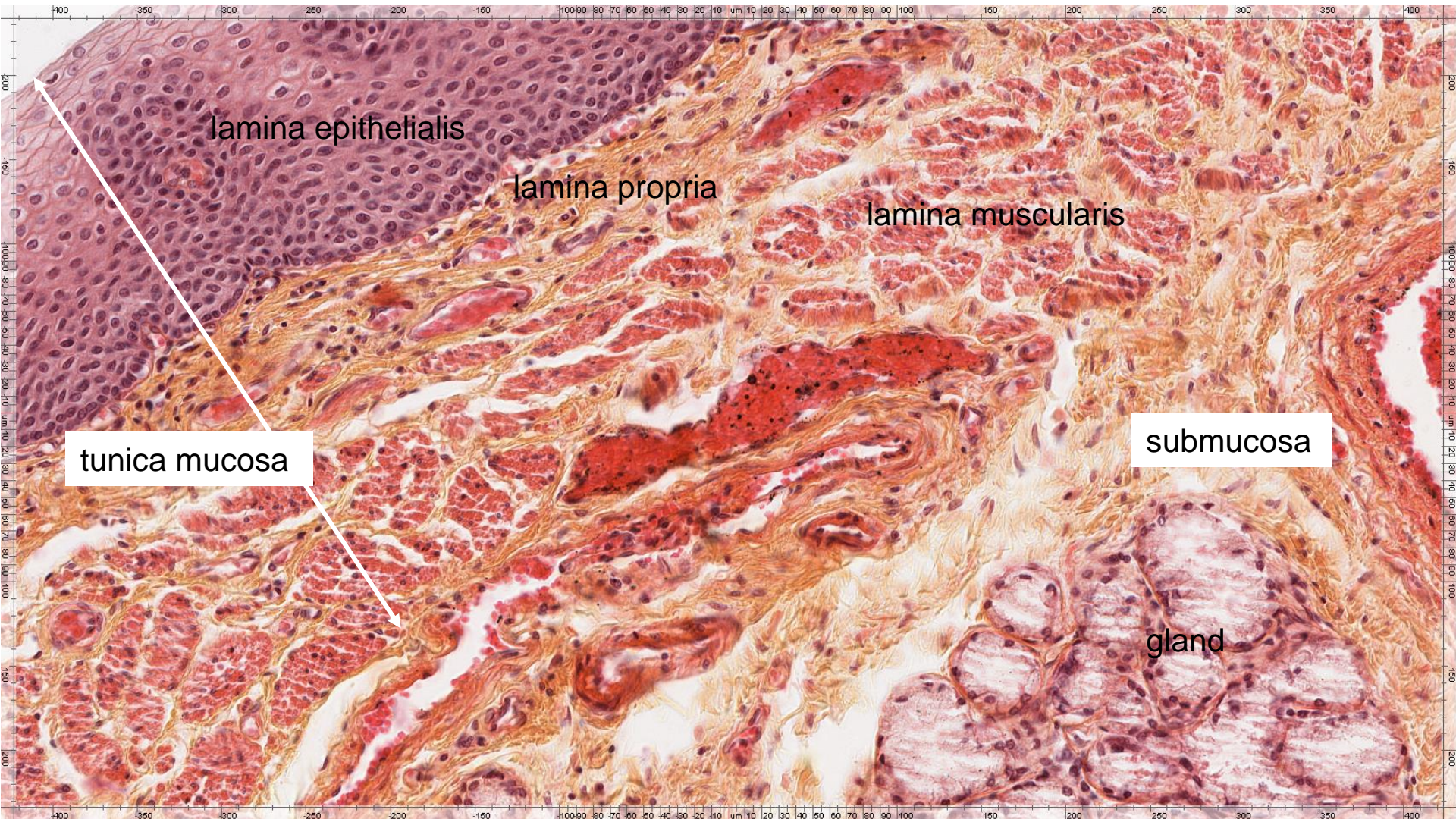
nuclei of fibrocytes - violet

collagen fibres - blue

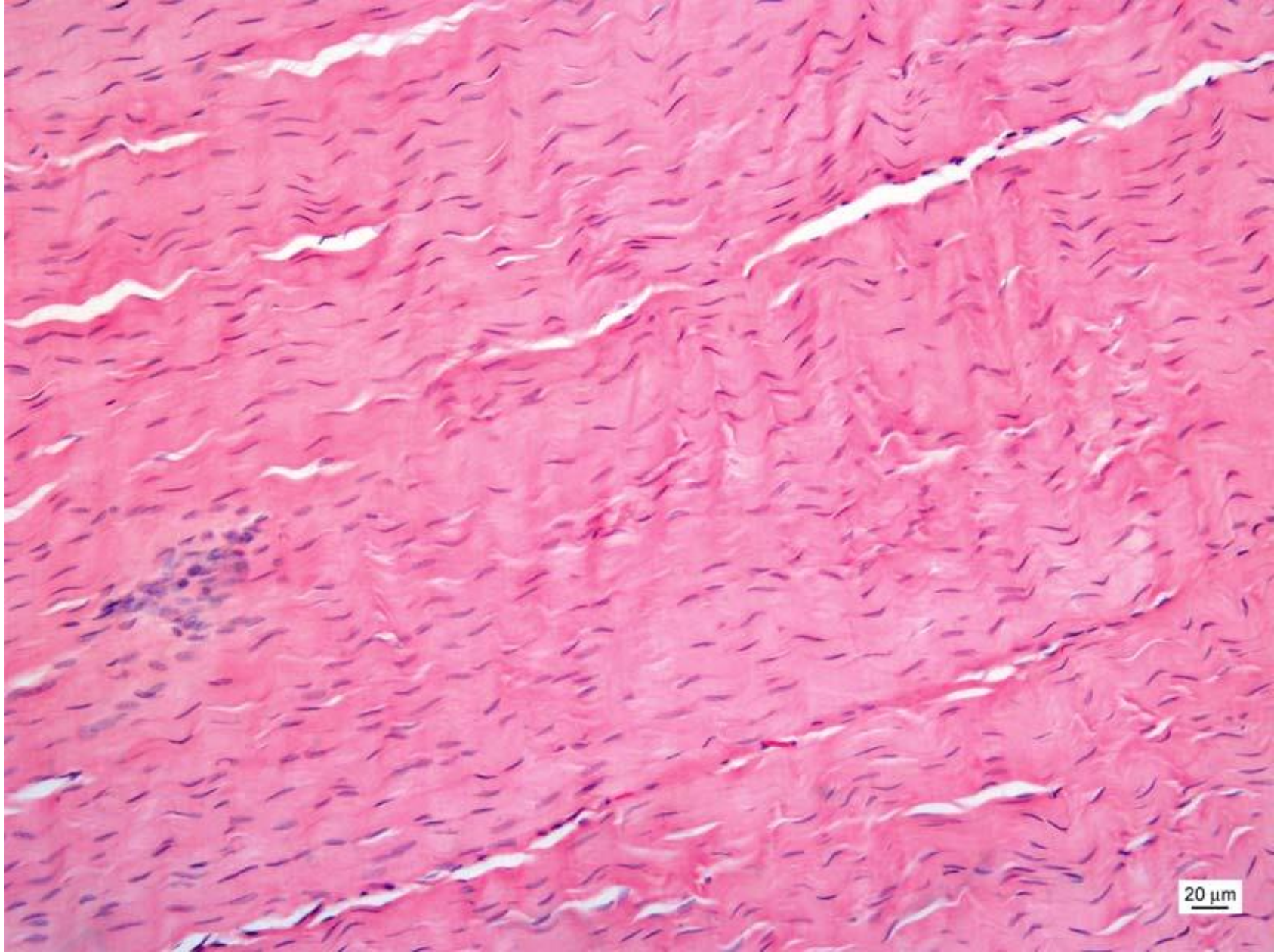
Loose (collagen) connective tissue - esophagus



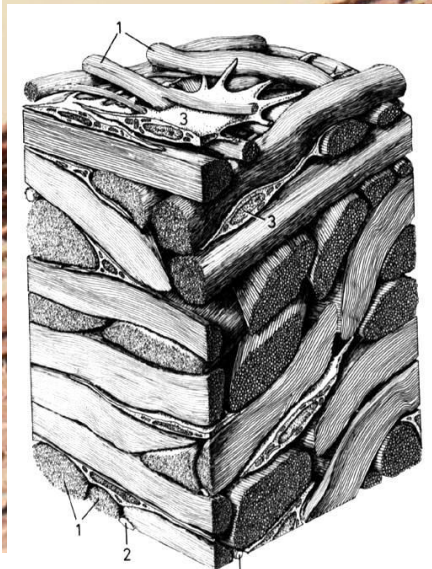
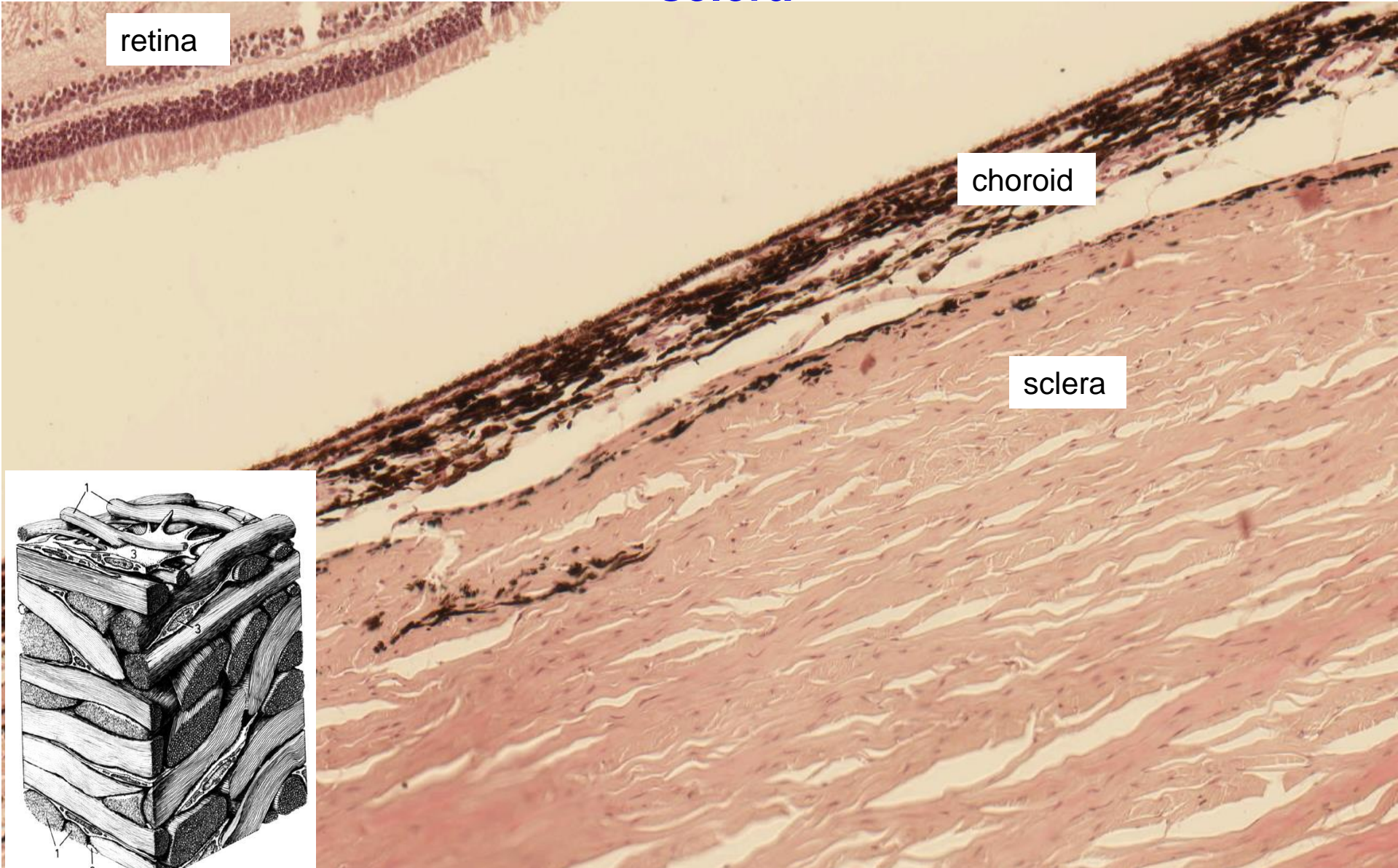
Loose (collagen) c.t. – tunica mucosa, tela submucosa



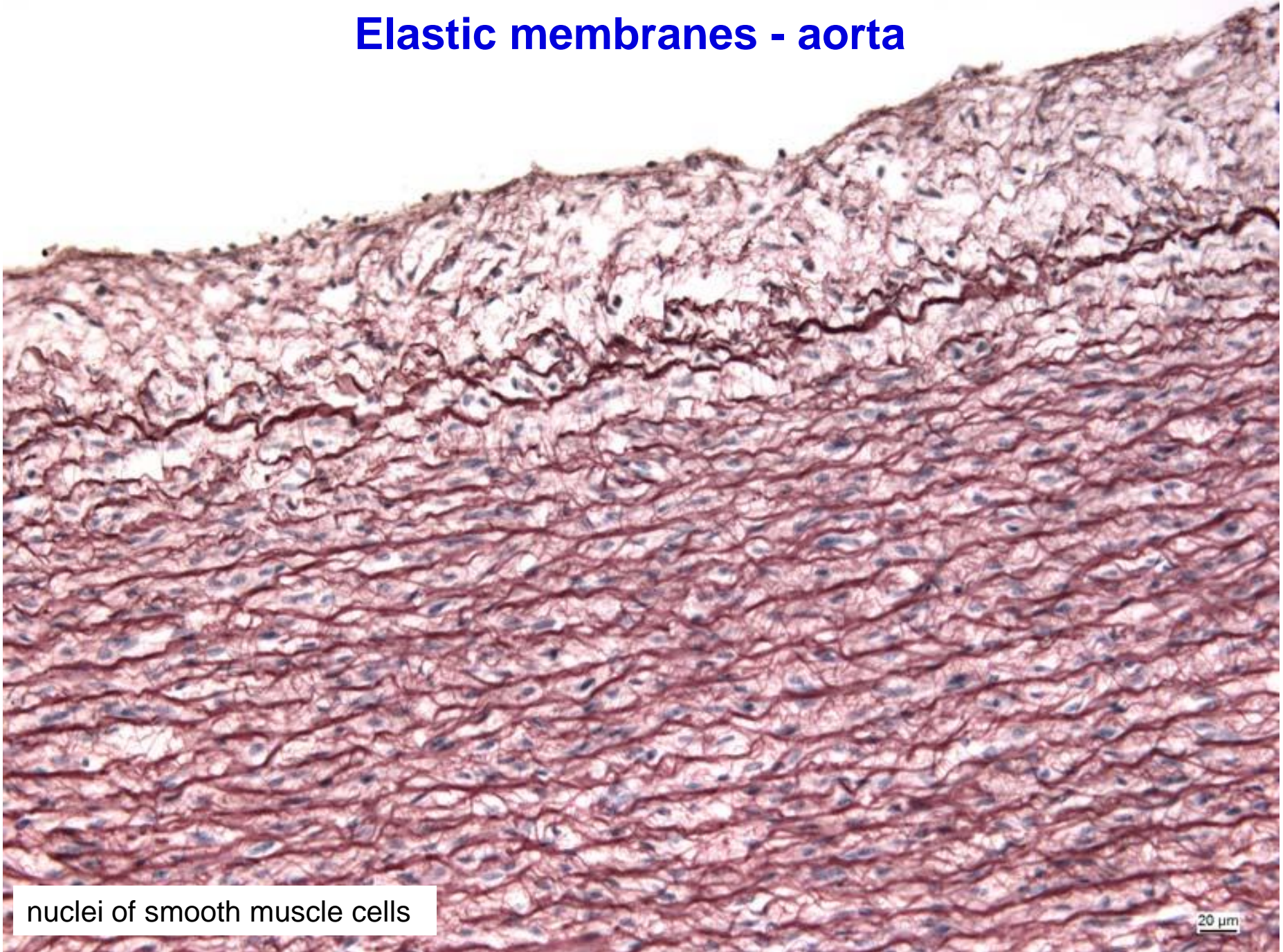
Dense (collagen) connective tissue regularly arranged - tendon



Dense (collagen) connective tissue irregularly arranged - sclera



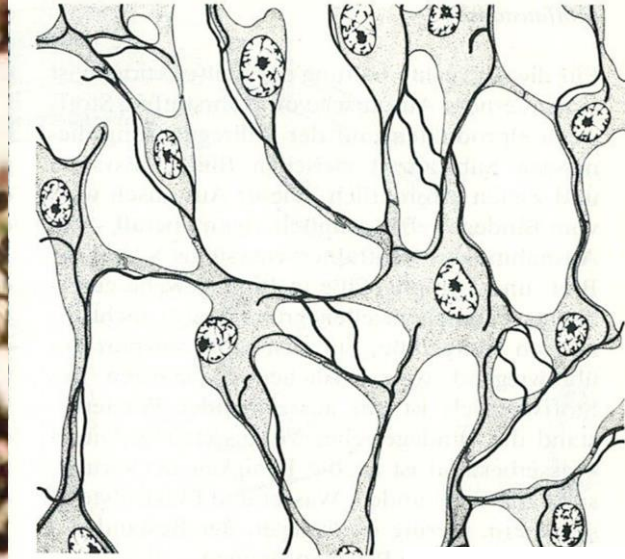
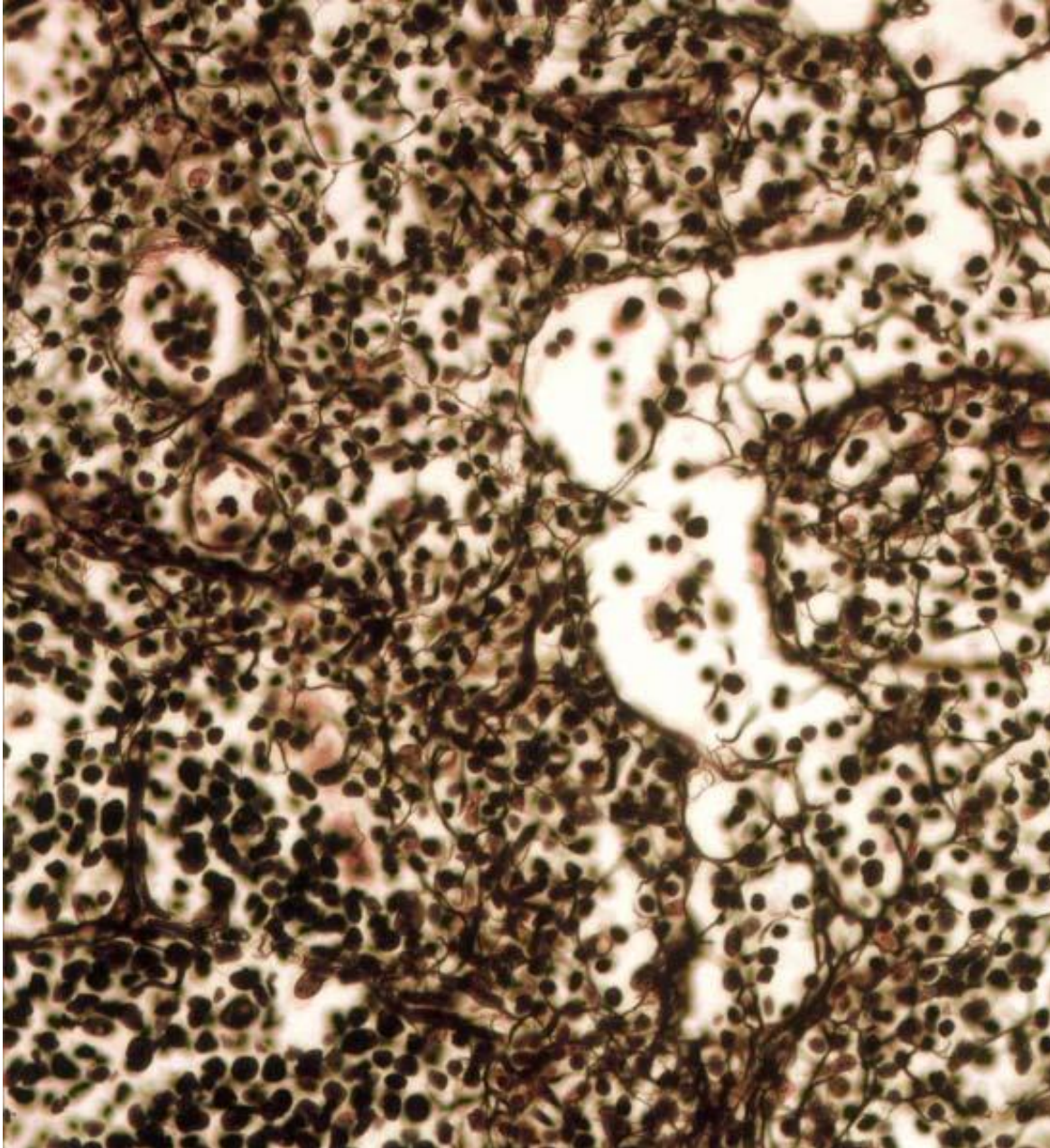
Elastic membranes - aorta



nuclei of smooth muscle cells

20 μ m

Reticular connective tissue – spleen (impregnation)

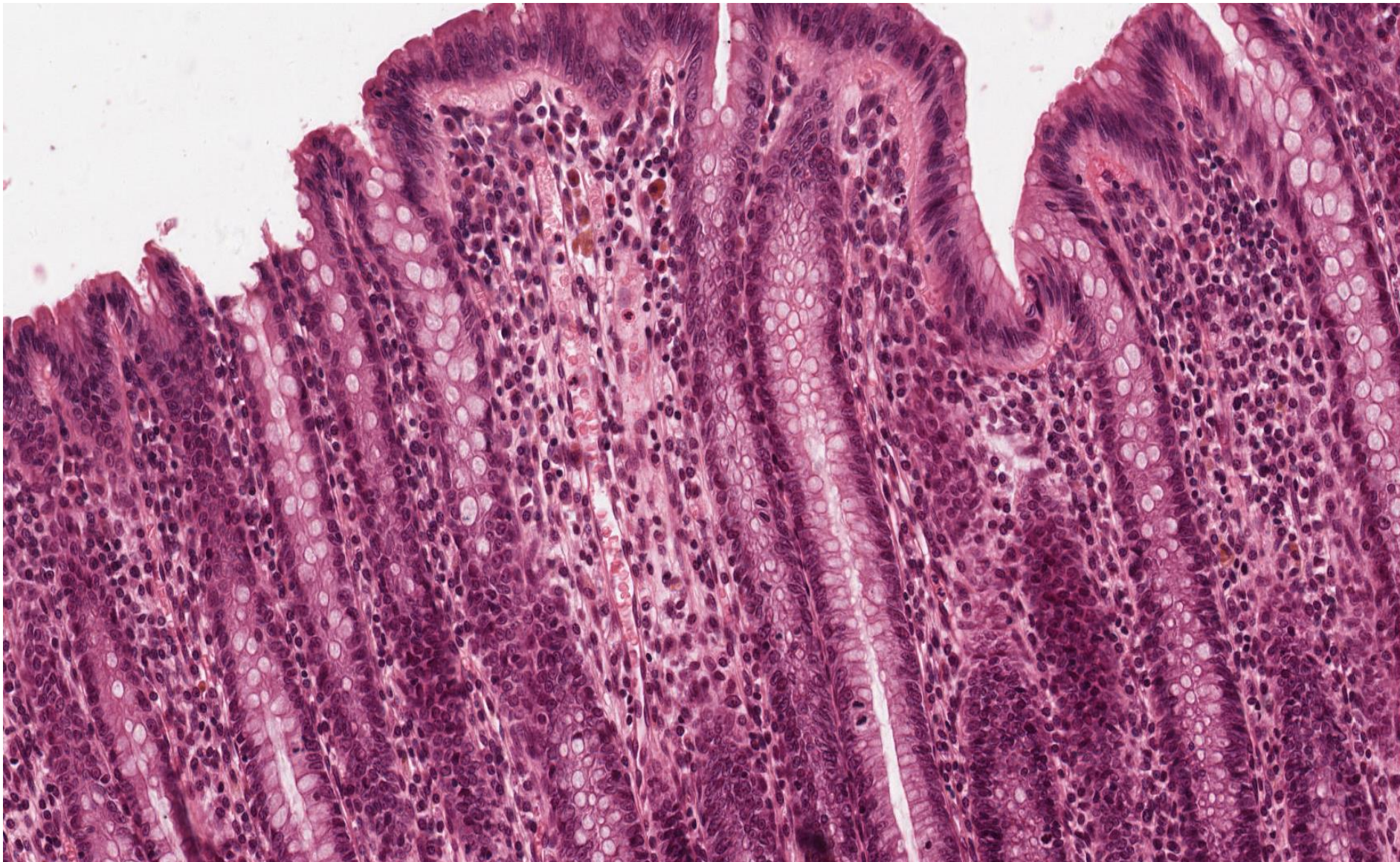


<http://quizlet.com>

20 μ m

I

Reticular connective tissue - intestinum crassum (HE)



Connective tissue proper

Slides:

Wharton's jelly (99. Funiculus umbilicalis)

Loose (areolar) collagen connective tissue (11. Esophagus)

Dense collagen connective tissue – irregular (89. Posterior part of the eye)

Reticular connective tissue (68. Lien – impregnation)

Elastic membranes (62. Aorta)

Atlas EM:

Pages 33 - 37