

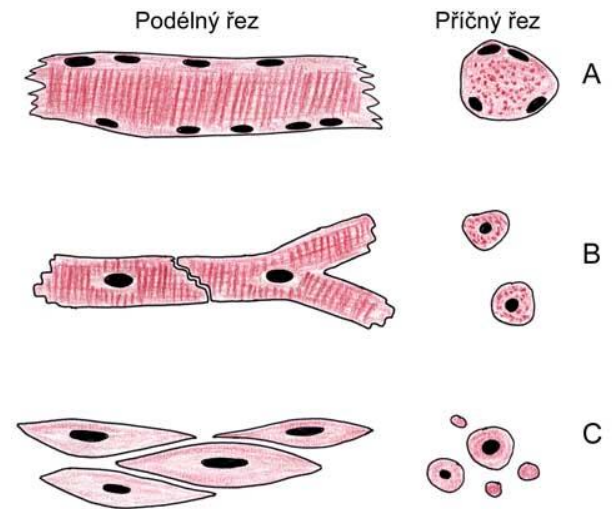
Svalová tkáň

Kosterní svalovina – rhabdomyocyty

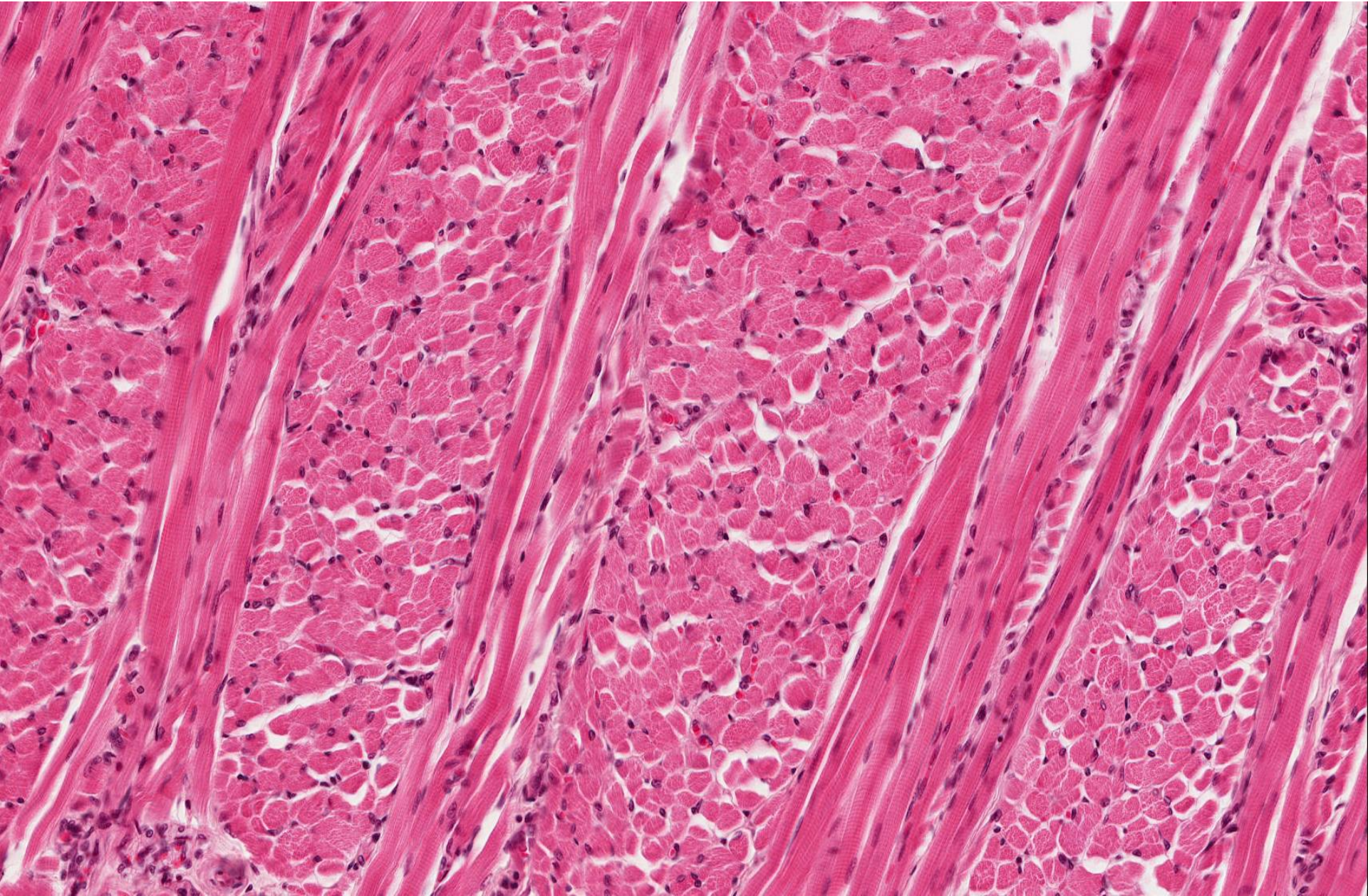
Hladká svalovina – leiomyocyty

Srdeční svalovina – kardiomyocyty

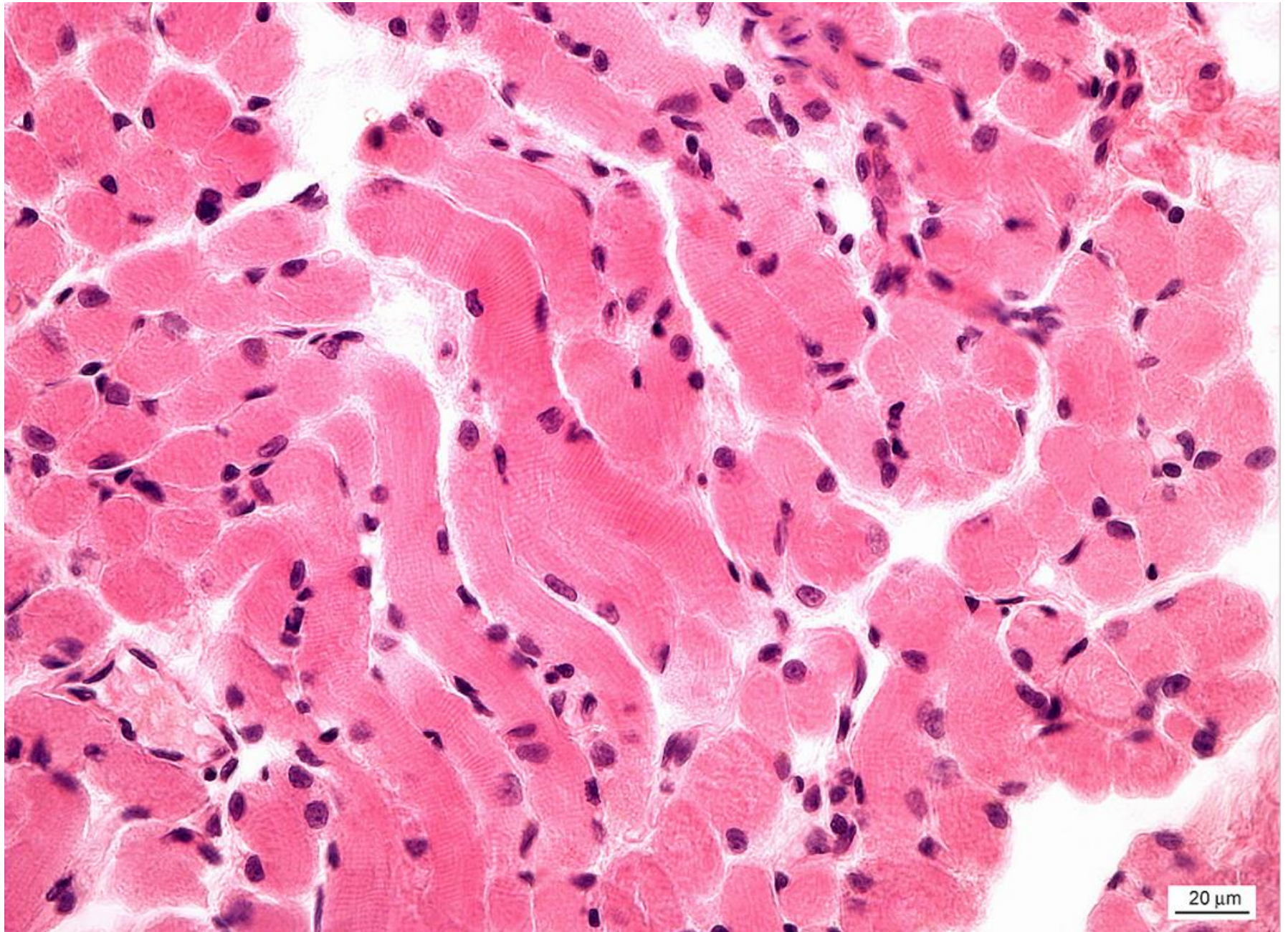
Opakování tkání



Kosterní svalová tkáň – *Apex linguae*

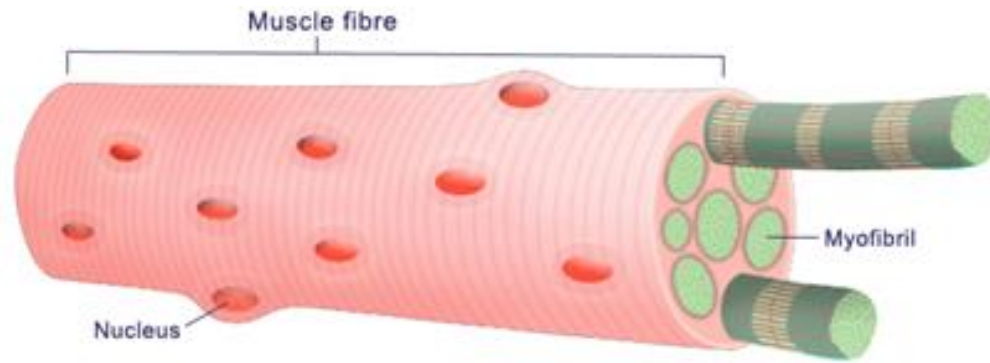


Kosterní svalová tkáň (příčně pruhovaná)

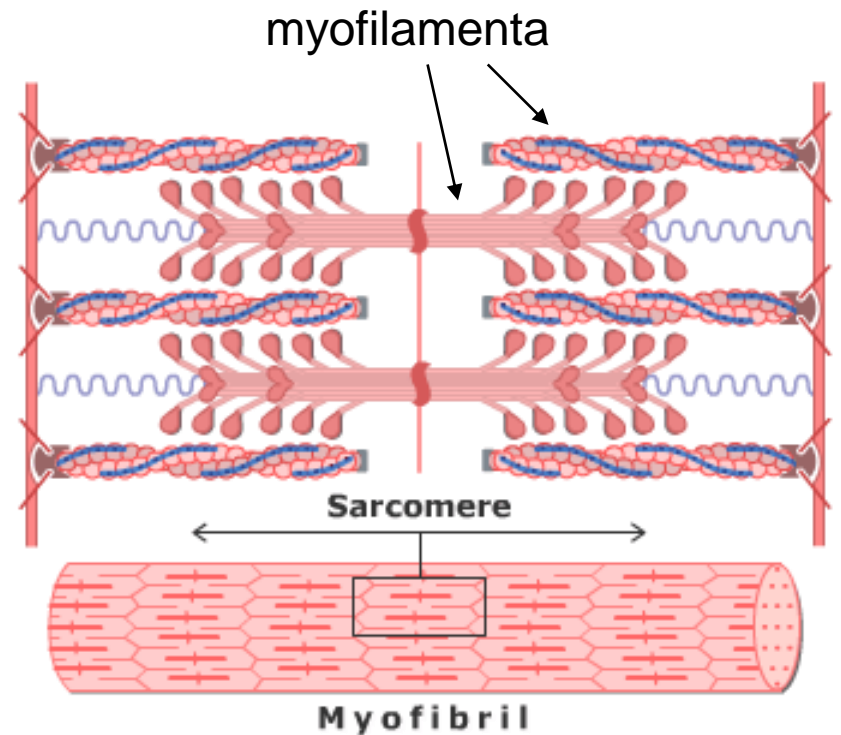
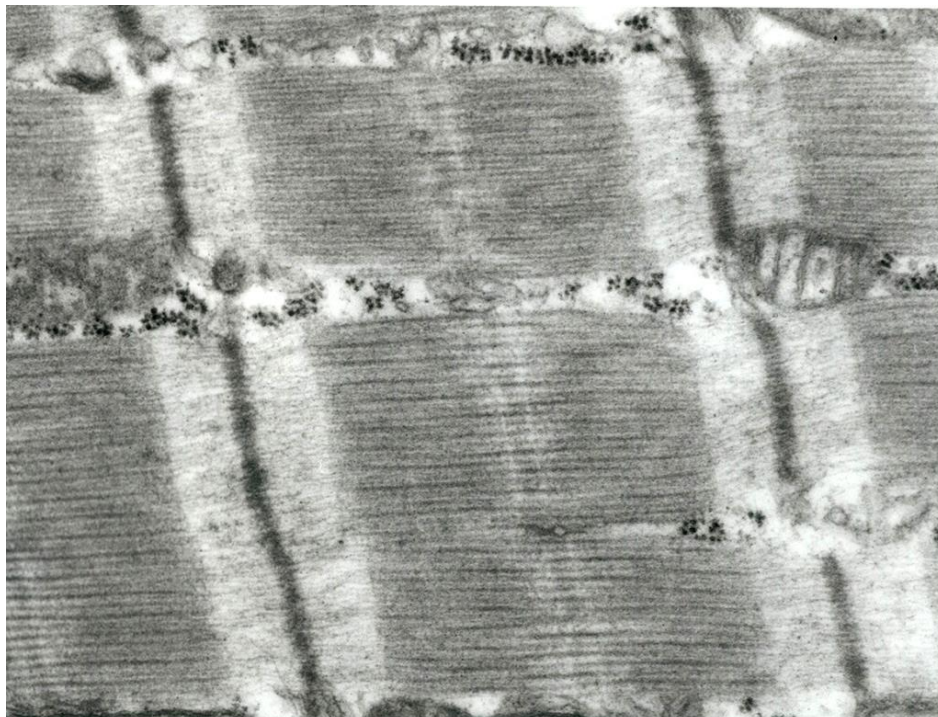


Rhabdomyocyt

Svalové vlákno
Myofibrila
Myofilamentum



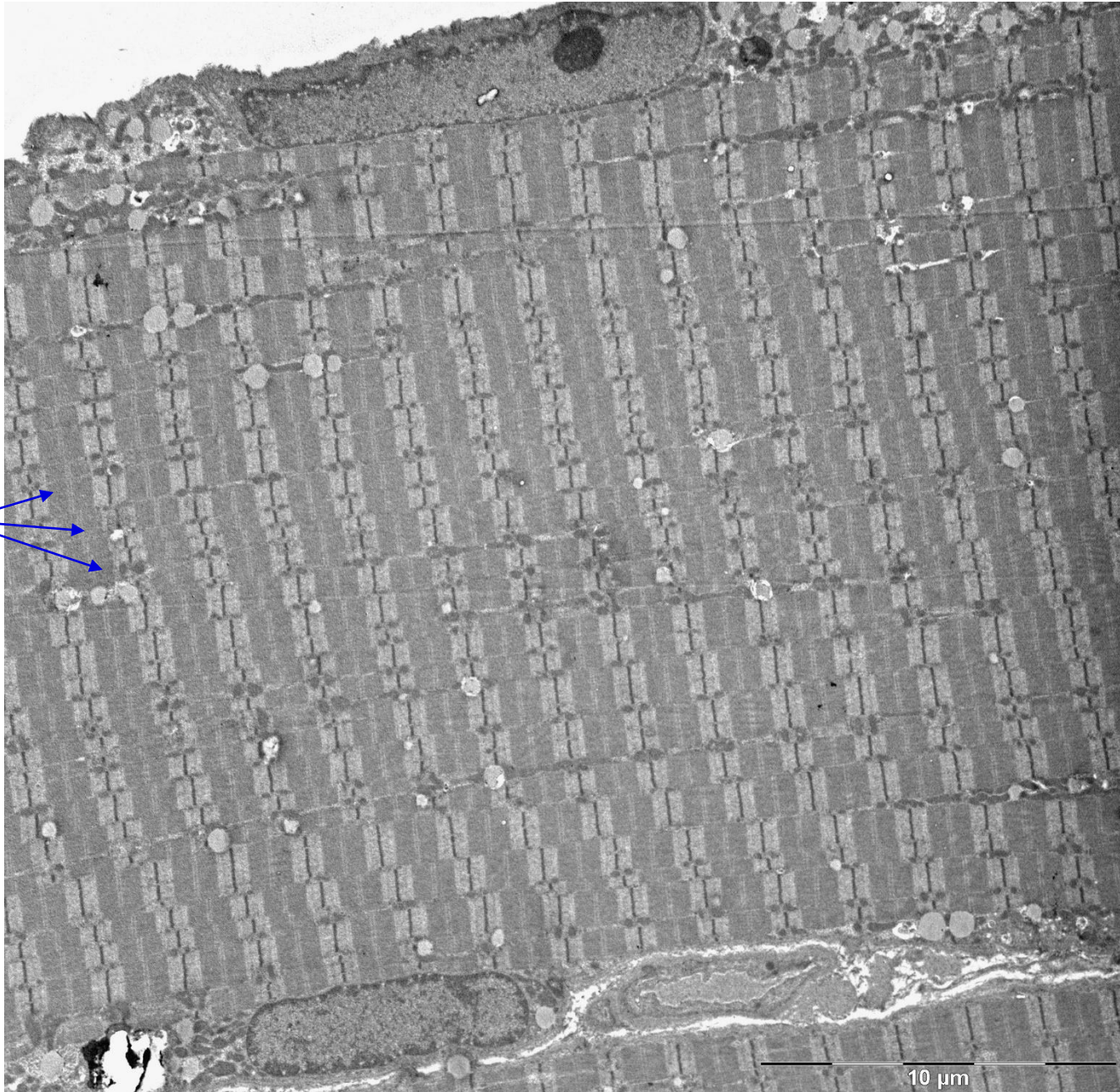
I-proužek A-proužek I-proužek
Z H-M-H Z



Rhabdomyocyt – člověk (TEM)

relaxovaný

myofibrily



10 μm

Rhabdomyocyty – okohybný sval potkana (TEM)

kontrahovaný

mitochondrie

myofibrily

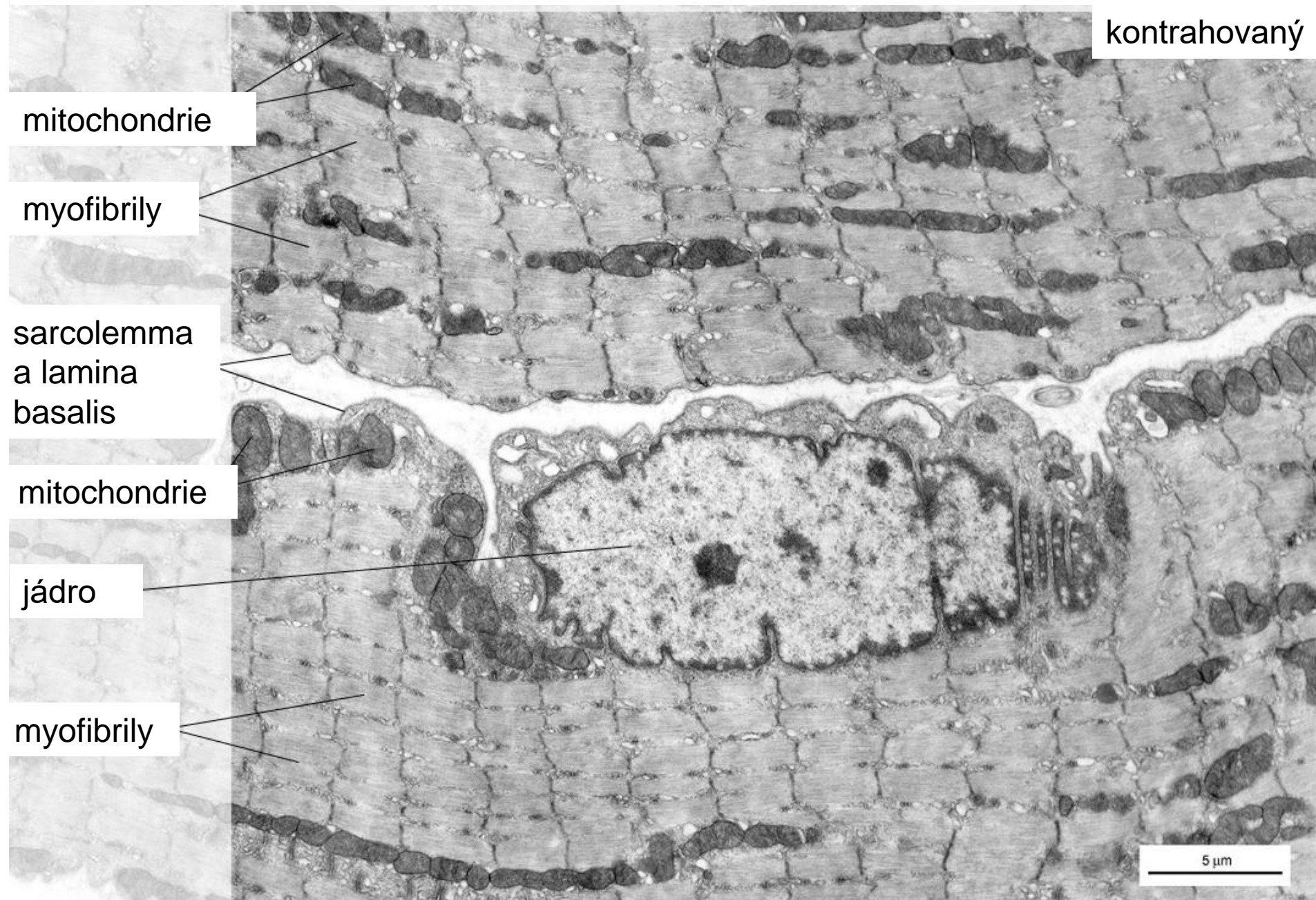
sarcolemma
a lamina
basalis

mitochondrie

jádro

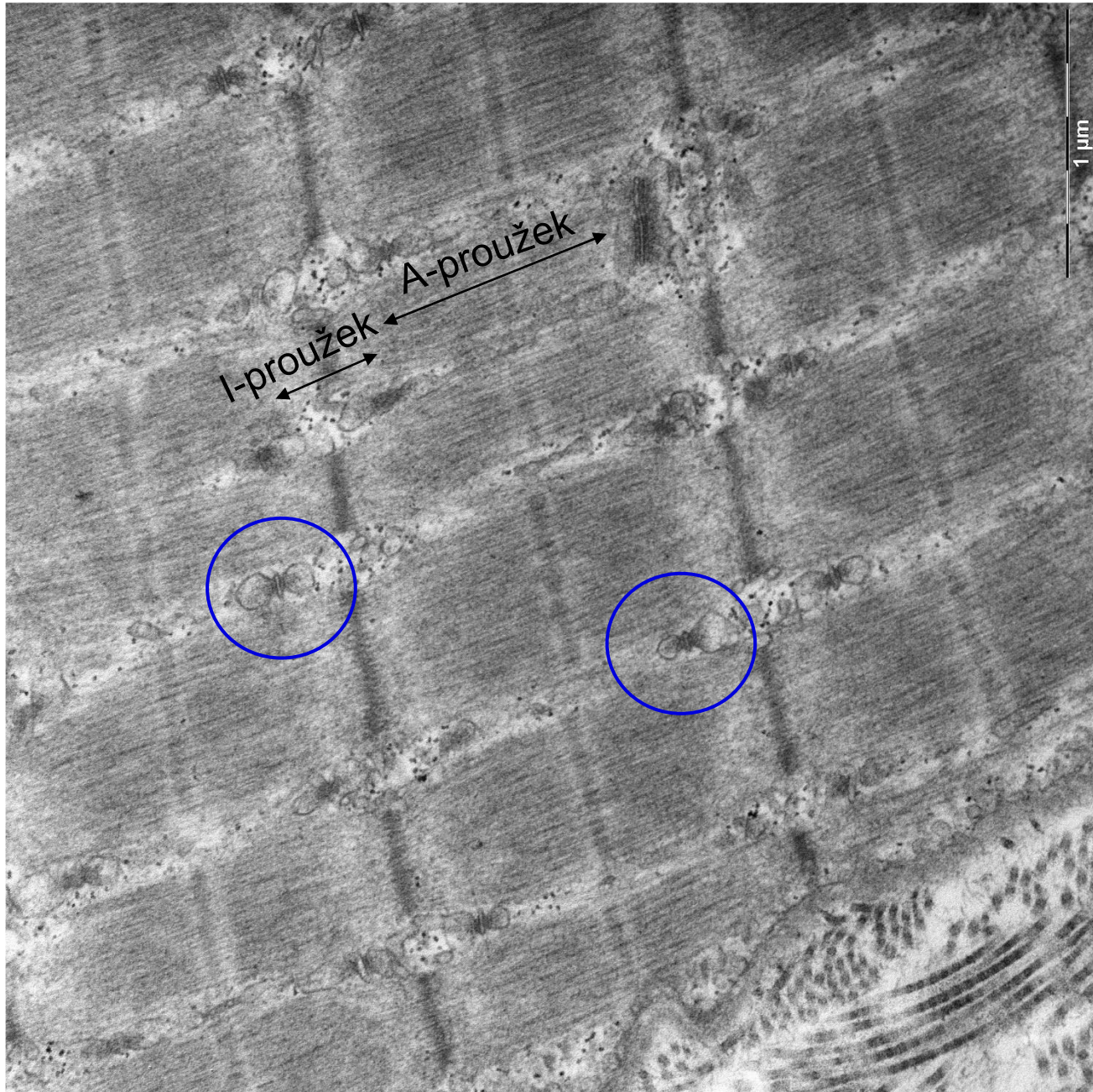
myofibrily

5 μ m

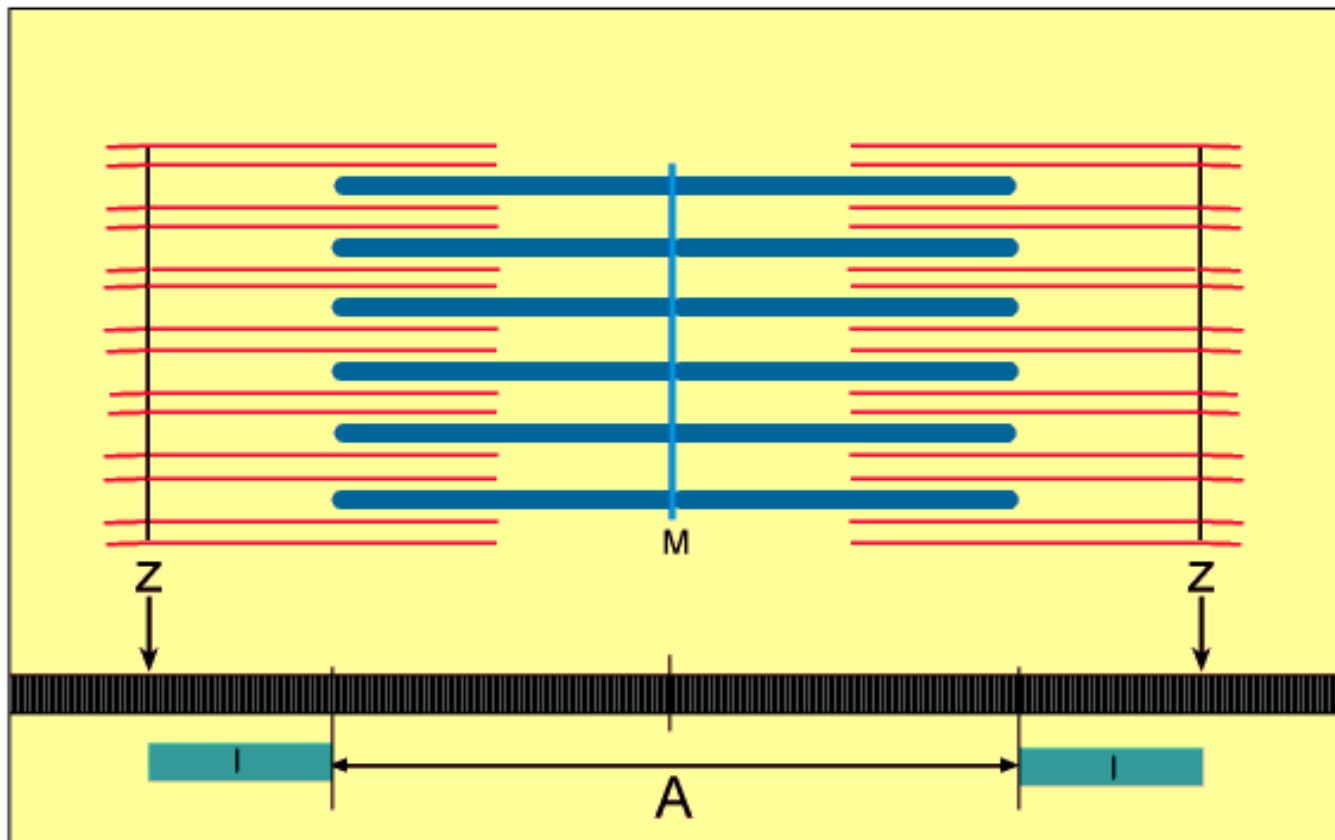


Rhabdomyocyt

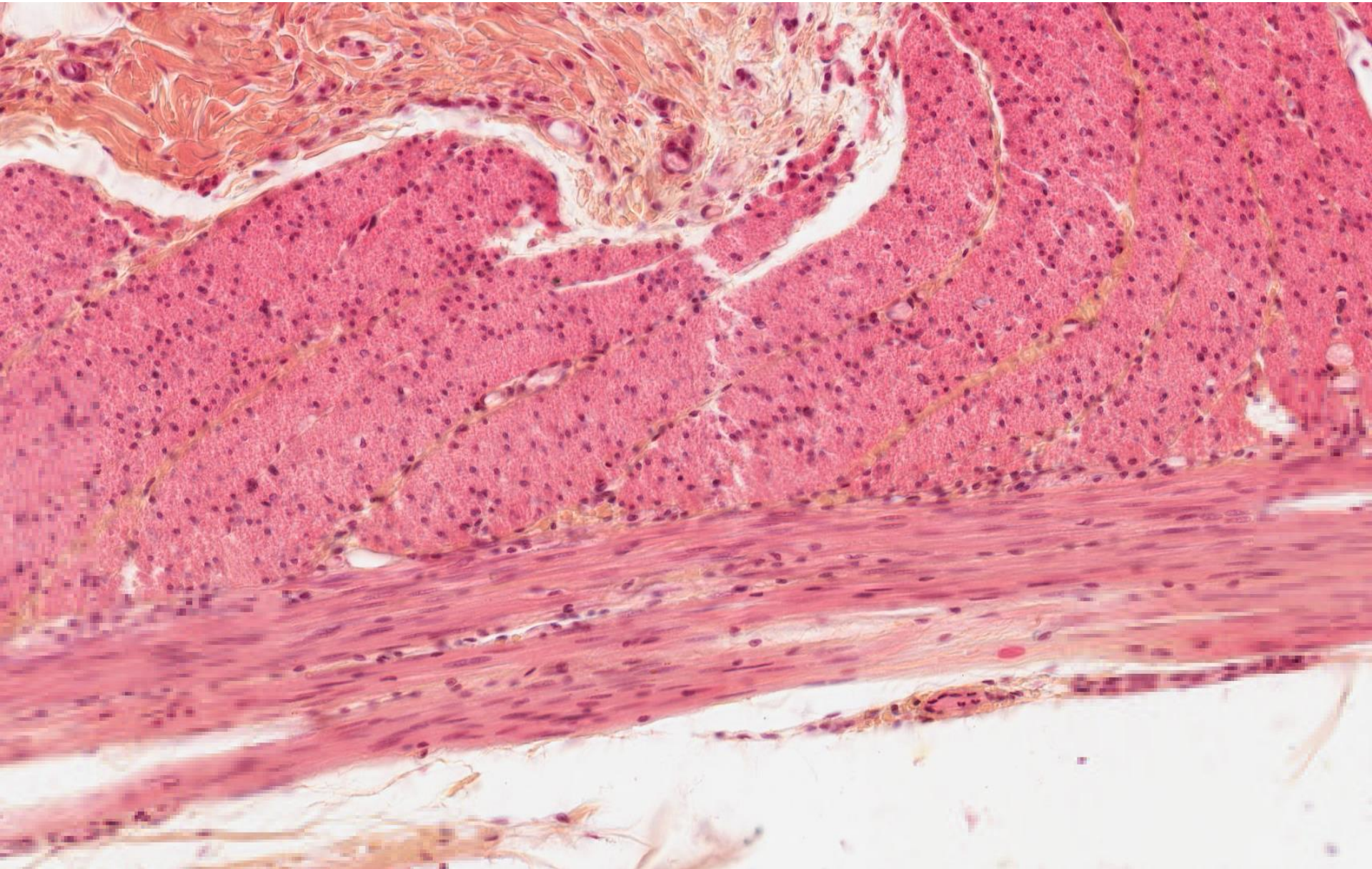
triáda



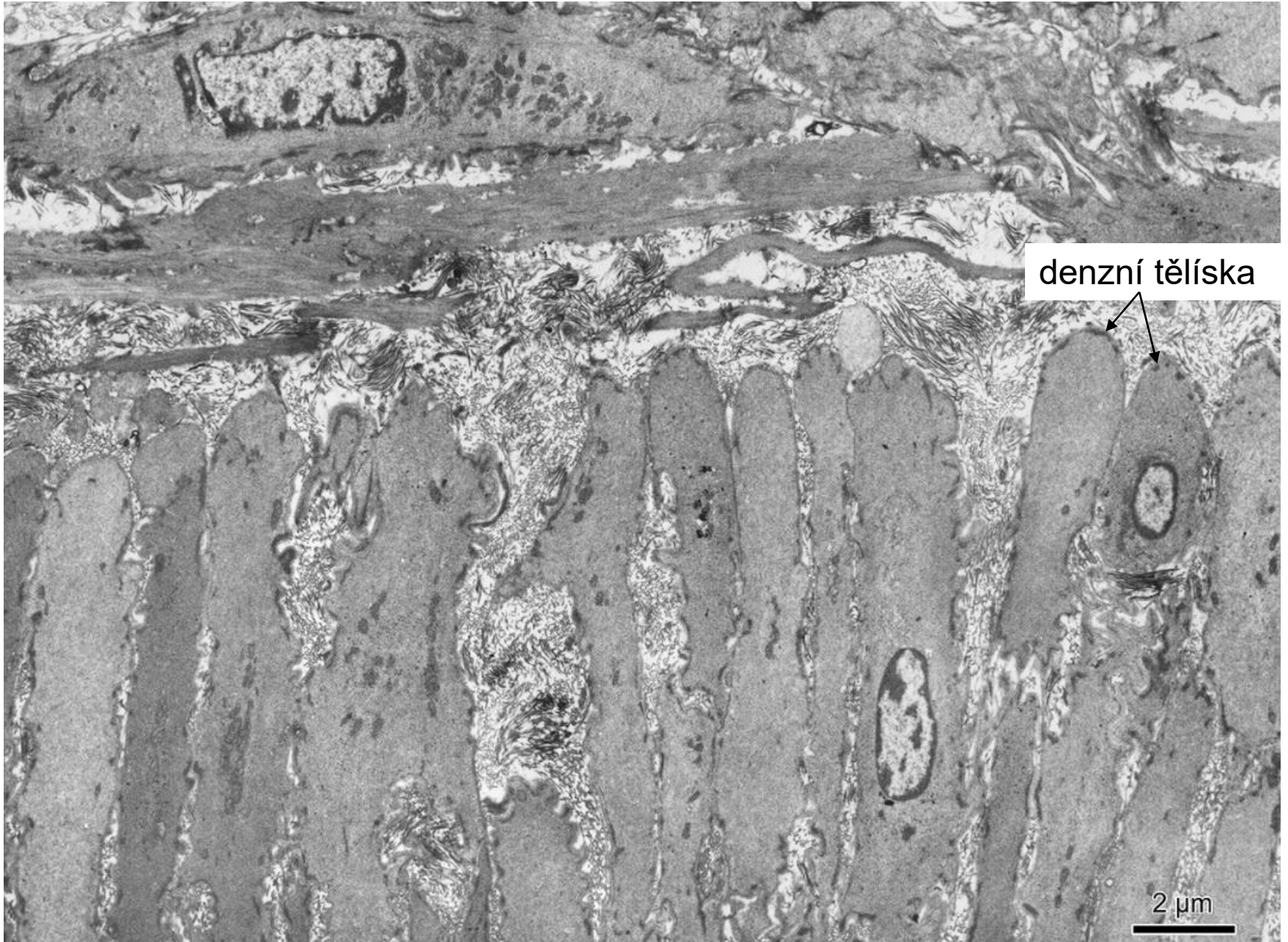
Svalová kontrakce



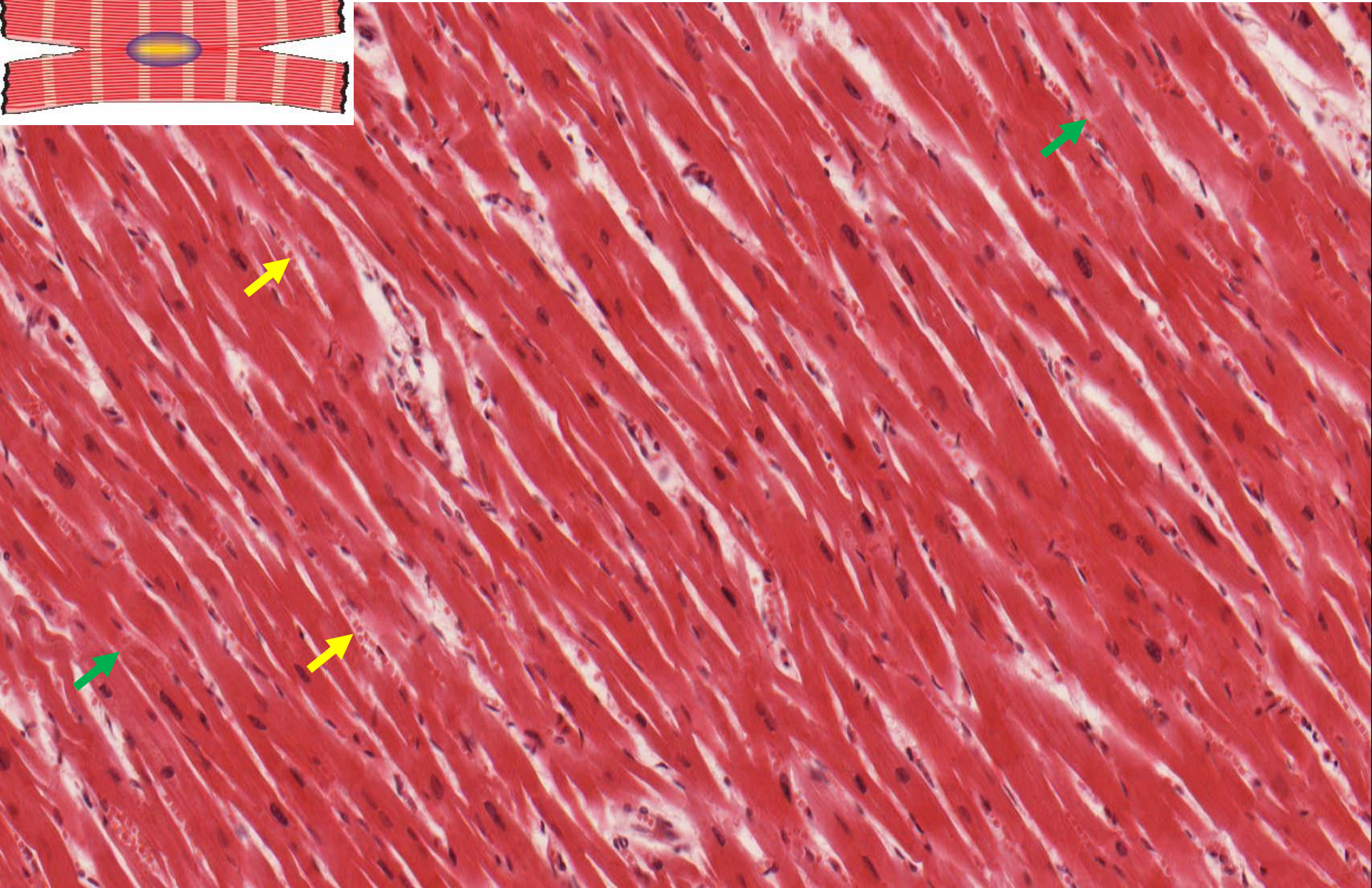
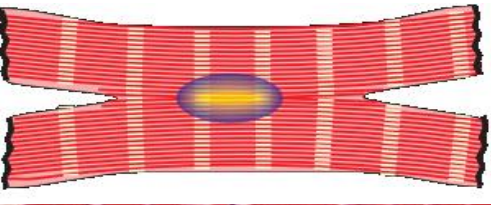
Hladká svalová tkáň – *Intestinum tenue*



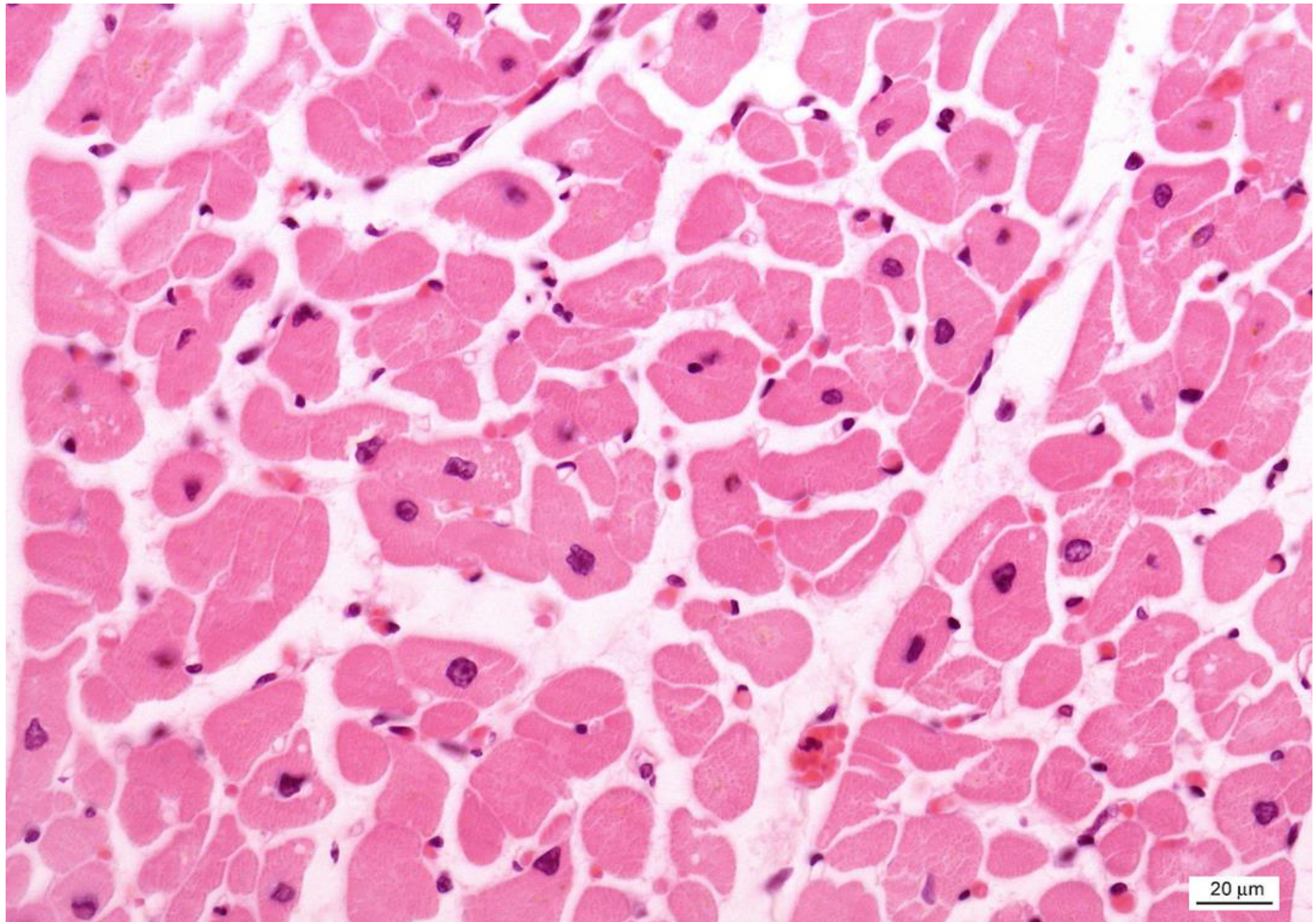
Leiomyocyt



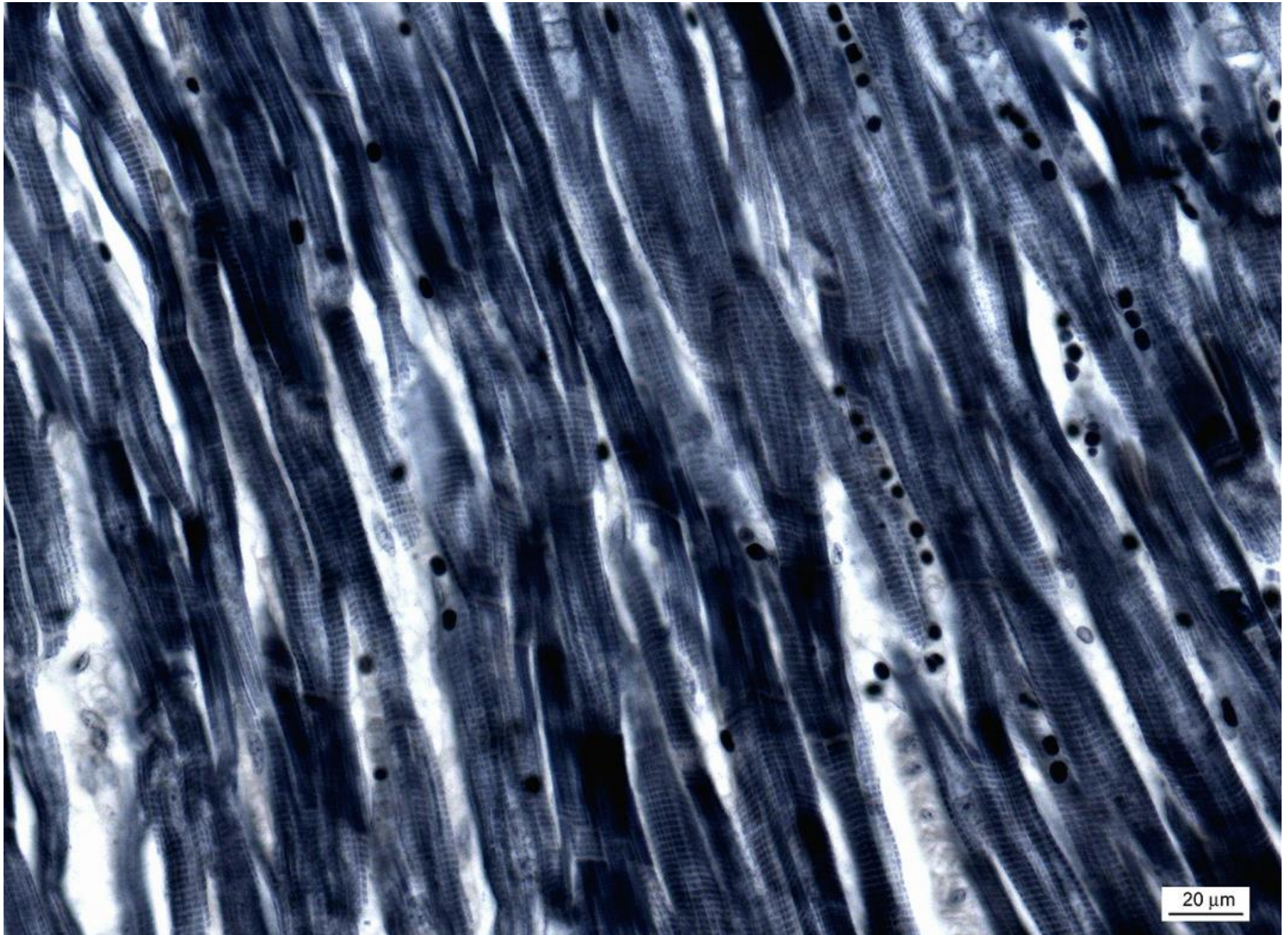
Srdeční svalová tkáň (HE) – podélný řez



Srdeční svalová tkáň (HE) – příčný řez

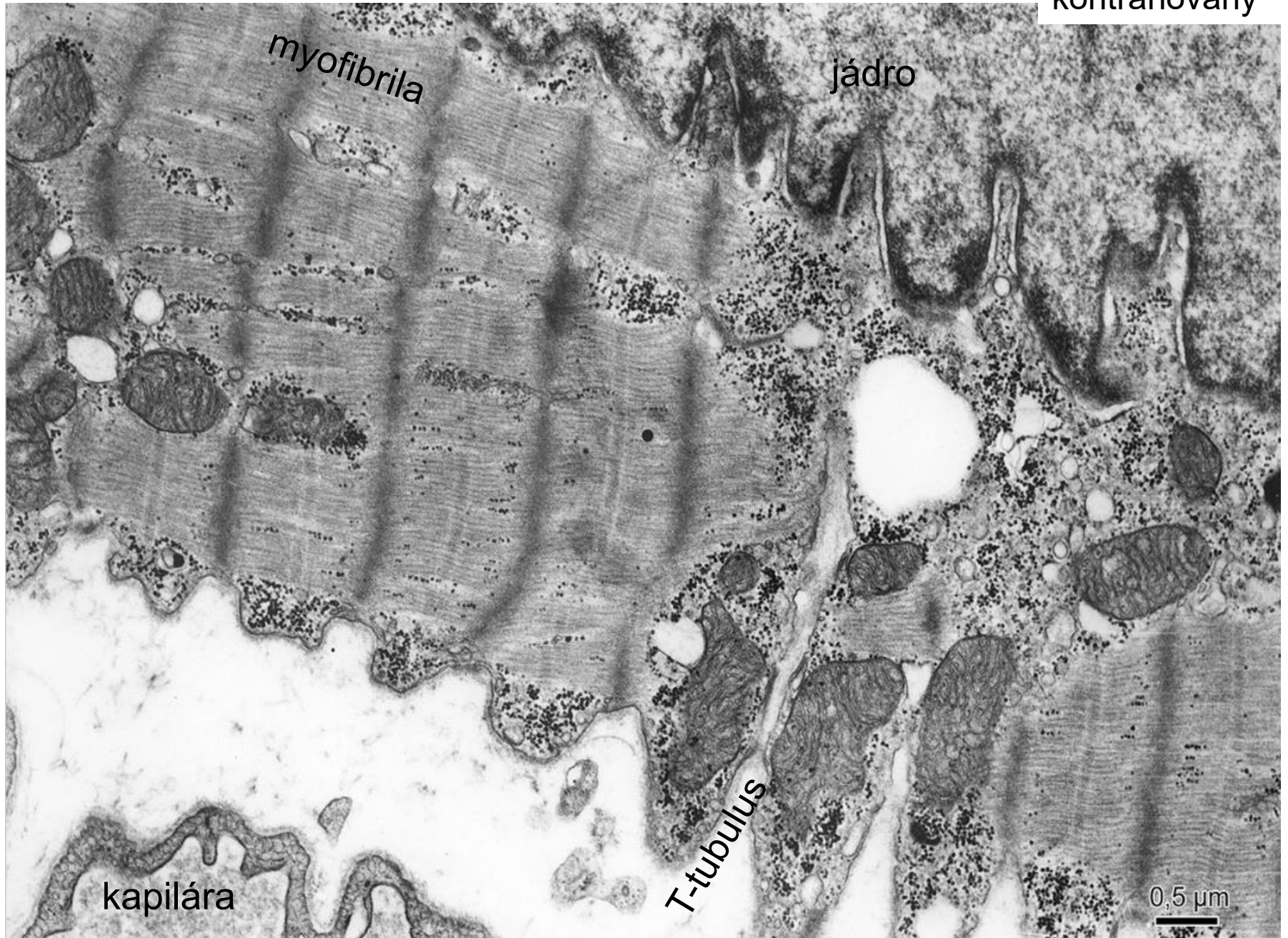


Srdeční svalová tkáň (Heidenhein)

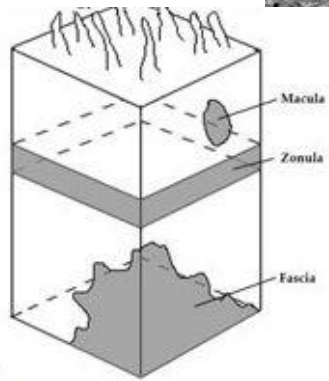
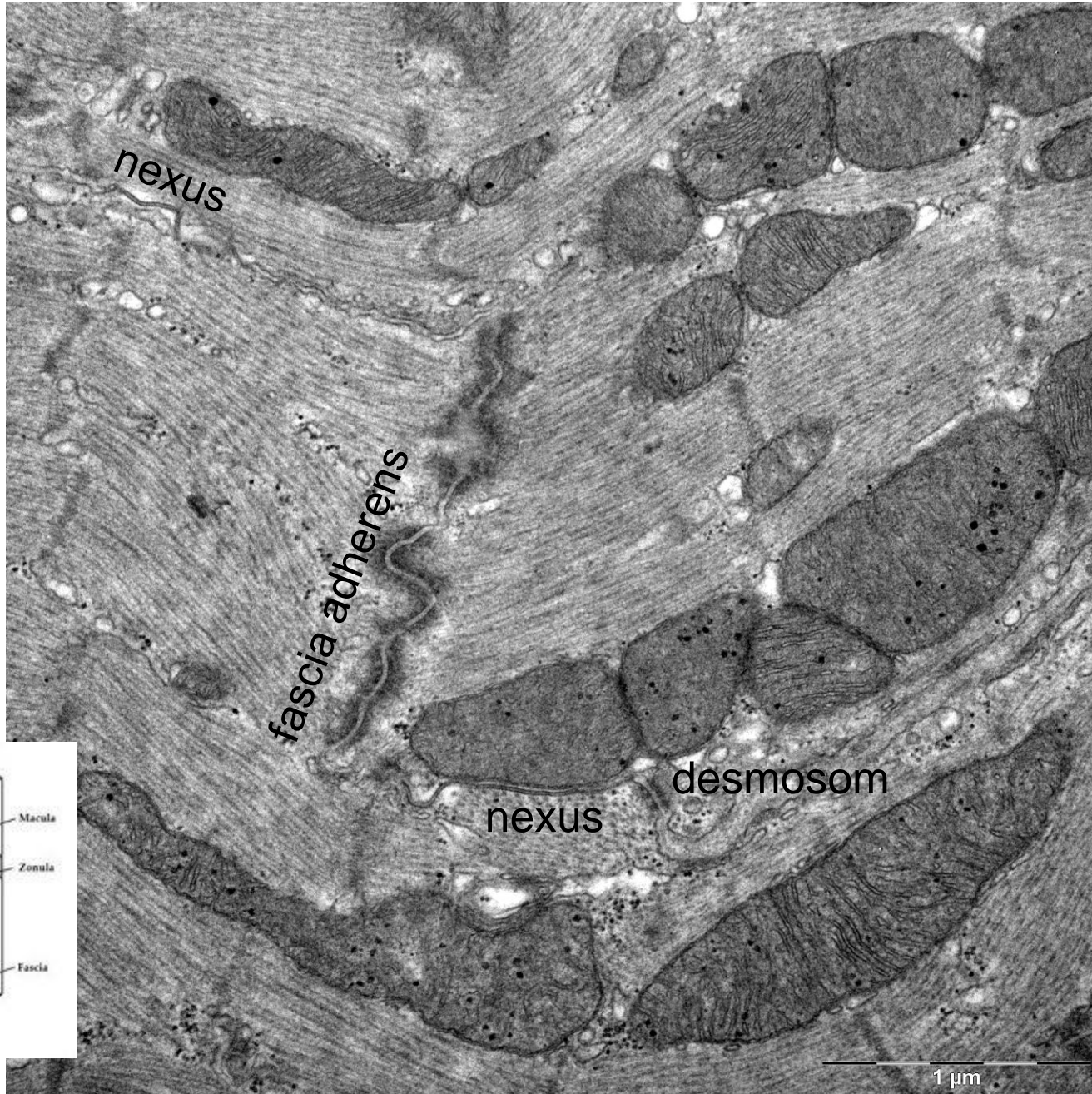


Kardiomyocyt

kontrahovaný



Kardiomyocyt – interkalární disk



MUNI MED

Svalová tkáň

Preparáty:

Kosterní svalová tkáň (2. Apex linguae)

Hladká svalová tkáň (16. Intestinum tenue)

Srdeční svalová tkáň (64, 65. Myocardium)

Schéma sarkomery

Atlas EM:

Rhabdomyocyt (42-43)

Leiomyocyt (47)

Kardiomyocyt (44-46)