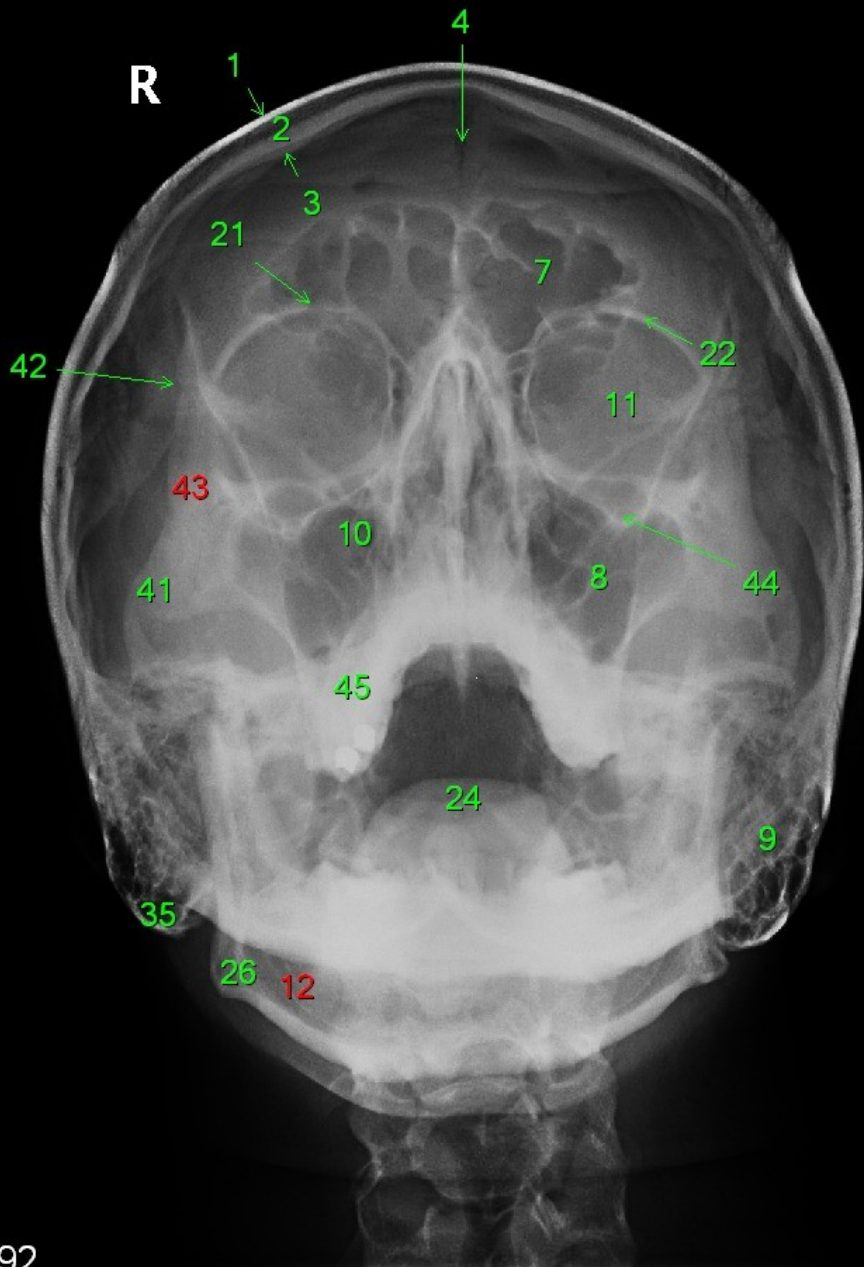
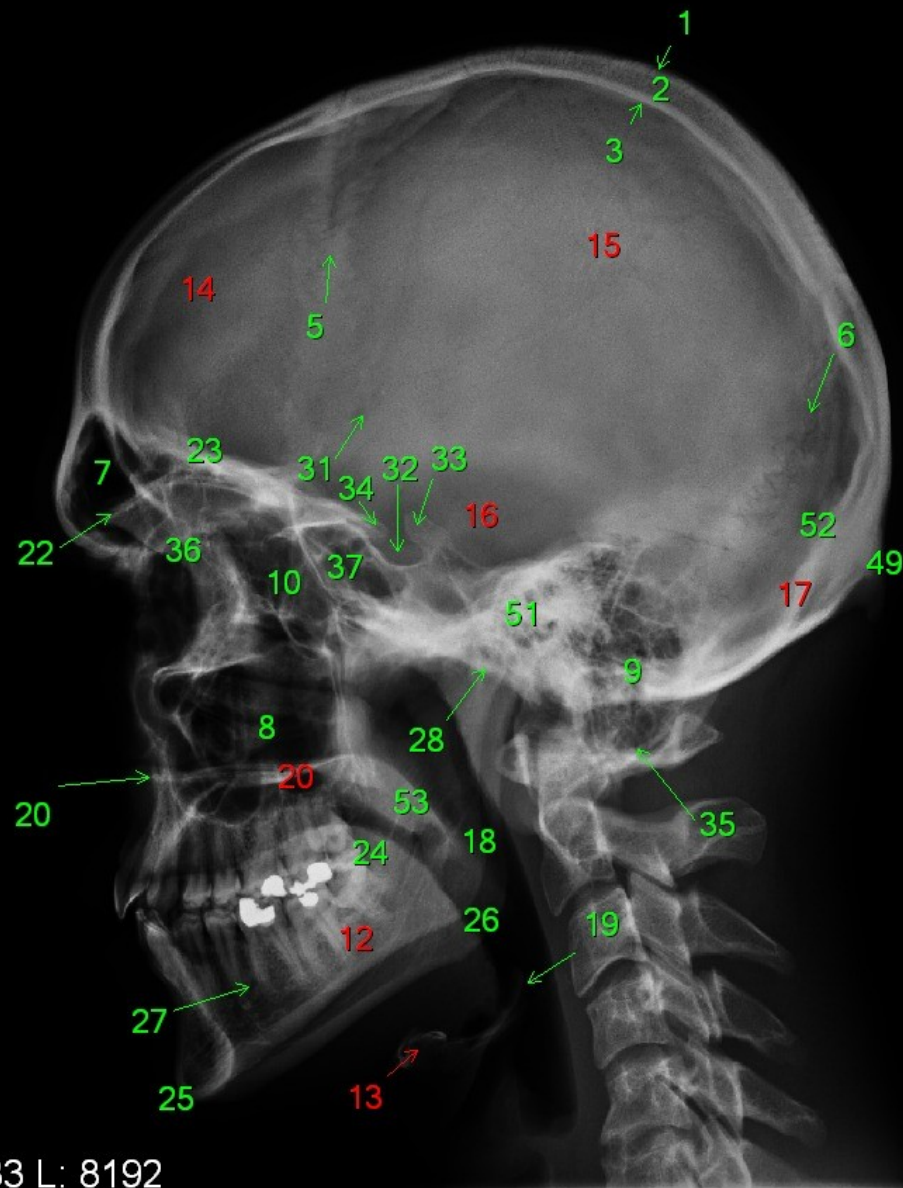


- 1 lamina externa
- 2 diploe
- 3 lamina interna
- 4 sutura sagittalis
- 5 sutura coronalis
- 6 sutura lambdoidea
- 7 sinus frontalis
- 8 sinus maxillaris
- 9 cellulae mastoideae
- 10 cellulae ethmoidales
- 11 orbita
- 12 mandibula
- 13 os hyoideum
- 14 os frontale, squama
- 15 os parietale
- 16 os temporale
- 17 os occipitale
- 18 pharynx
- 19 os hyoideum, cornu majus
- 20 palatum osseum
- 21 incisura supraorbitalis
- 22 margo supraorbitalis
- 23 pars orbitalis ossis frontalis
- 24 lingua
- 25 protuberantia mentalis
- 26 angulus mandibulae
- 27 foramen mentale
- 28 caput mandibulae
- 29 ramus mandibulae
- 30 canalis mandibulae
- 31 sulcus arteriae meningee mediae
- 32 fossa hypophysialis
- 33 processus clinoideus posterior
- 34 processus clinoideus anterior
- 35 processus mastoideus
- 36 lamina perpendicularis ossis ethmoidalis
- 37 sinus sphenoidalis
- 38 septum nasi
- 39 concha nasalis inferior
- 40 concha nasalis media
- 41 arcus zygomaticus
- 42 sutura frontozygomatica
- 43 os zygomaticum
- 44 foramen infraorbitale
- 45 processus alveolaris maxillae
- 46 crista galli
- 47 fissura orbitalis superior
- 48 fissura orbitalis inferior
- 49 protuberantia occipitalis externa
- 50 crista pyramidis
- 51 os petrosum
- 52 protuberantia occipitalis interna
- 53 palatum molle

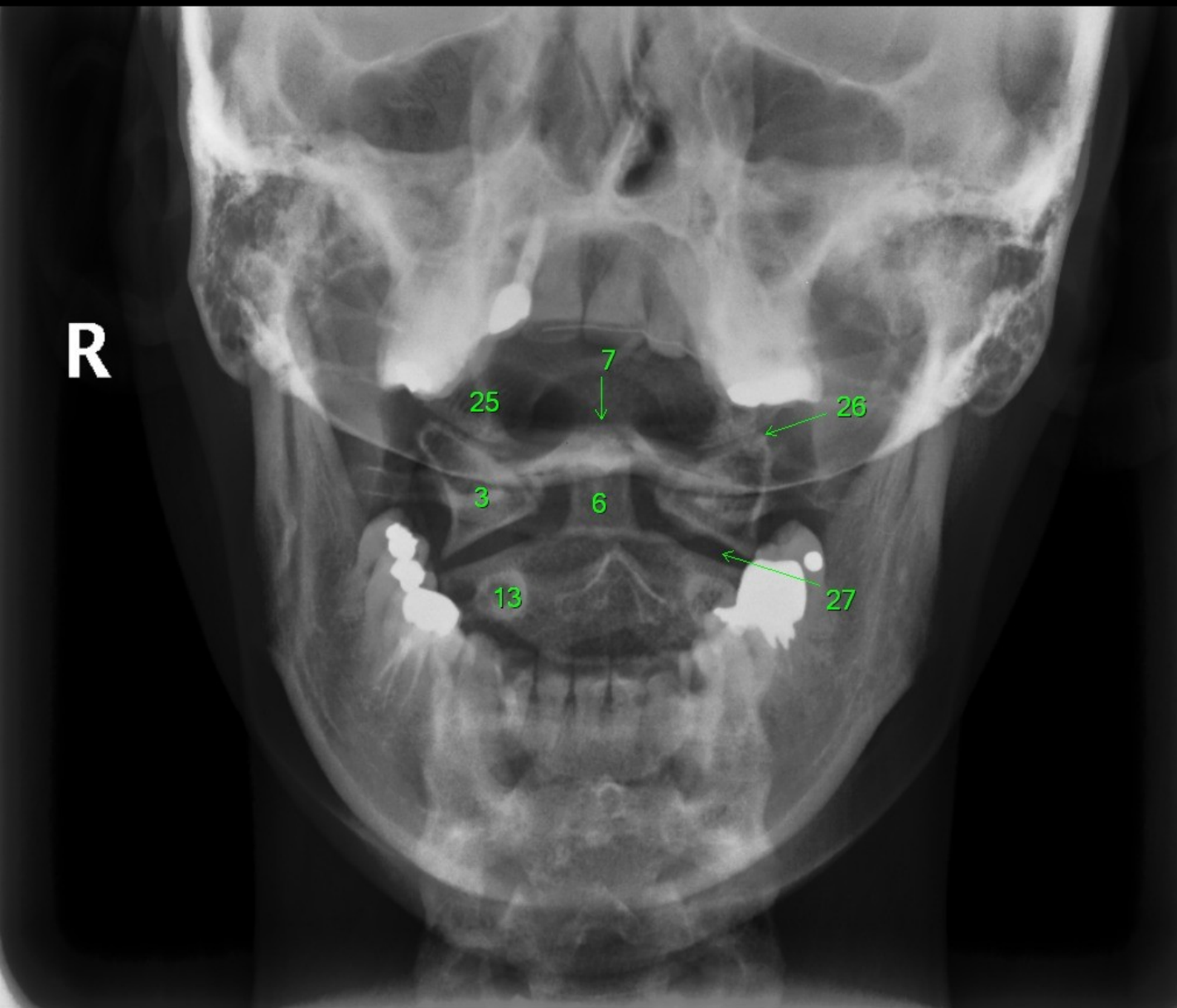


- 1 lamina externa
- 2 diploe
- 3 lamina interna
- 4 sutura sagittalis
- 5 sutura coronalis
- 6 sutura lambdoidea
- 7 sinus frontalis
- 8 sinus maxillaris
- 9 celullae mastoideae
- 10 celullae ethmoidales
- 11 orbita
- 12 mandibula
- 13 os hyoideum
- 14 os frontale, squama
- 15 os parietale
- 16 os temporale
- 17 os occipitale
- 18 pharynx
- 19 os hyoideum, cornu majus
- 20 palatum osseum
- 21 incisura supraorbitalis
- 22 margo supraorbitalis
- 23 pars orbitalis ossis frontalis
- 24 lingua
- 25 protuberantia mentalis
- 26 angulus mandibulae
- 27 foramen mentale
- 28 caput mandibulae
- 29 ramus mandibulae
- 30 canalis mandibulae
- 31 sulcus arteriae meningee mediae
- 32 fossa hypophysialis
- 33 processus clinoides posterior
- 34 processus clinoides anterior
- 35 processus mastoideus
- 36 lamina perpendicularis ossis ethmoidalis
- 37 sinus sphenoidalis
- 38 septum nasi
- 39 concha nasalis inferior
- 40 concha nasalis media
- 41 arcus zygomaticus
- 42 sutura frontozygomatica
- 43 os zygomaticum
- 44 foramen infraorbitale
- 45 processus alveolaris maxillae
- 46 crista galli
- 47 fissura orbitalis superior
- 48 fissura orbitalis inferior
- 49 protuberantia occipitalis externa
- 50 crista pyramidis
- 51 os petrosum
- 52 protuberantia occipitalis interna
- 53 palatum molle

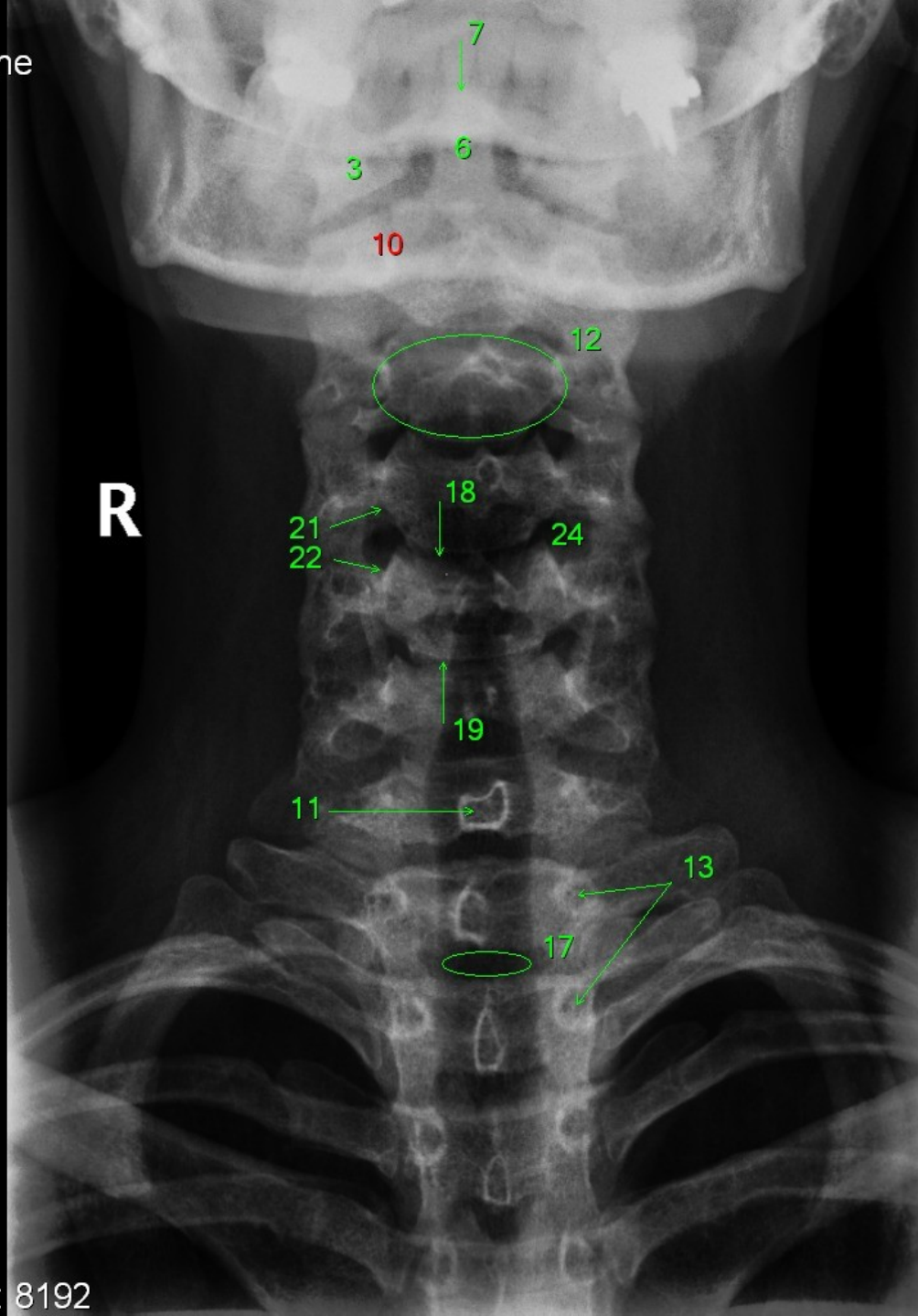


- 1 lamina externa
- 2 diploe
- 3 lamina interna
- 4 sutura sagittalis
- 5 sutura coronalis
- 6 sutura lambdoidea
- 7 sinus frontalis
- 8 sinus maxillaris
- 9 cellulae mastoideae
- 10 cellulae ethmoidales
- 11 orbita
- 12 mandibula
- 13 os hyoideum
- 14 os frontale, squama
- 15 os parietale
- 16 os temporale
- 17 os occipitale
- 18 pharynx
- 19 os hyoideum, cornu majus
- 20 palatum osseum
- 21 incisura supraorbitalis
- 22 margo supraorbitalis
- 23 pars orbitalis ossis frontalis
- 24 lingua
- 25 protuberantia mentalis
- 26 angulus mandibulae
- 27 foramen mentale
- 28 caput mandibulae
- 29 ramus mandibulae
- 30 canalis mandibulae
- 31 sulcus arteriae meningae mediae
- 32 fossa hypophysialis
- 33 processus clinoideus posterior
- 34 processus clinoideus anterior
- 35 processus mastoideus
- 36 lamina perpendicularis ossis ethmoidalis
- 37 sinus sphenoidalis
- 38 septum nasi
- 39 concha nasalis inferior
- 40 concha nasalis media
- 41 arcus zygomaticus
- 42 sutura frontozygomatica
- 43 os zygomaticum
- 44 foramen infraorbitale
- 45 processus alveolaris maxillae
- 46 crista galli
- 47 fissura orbitalis superior
- 48 fissura orbitalis inferior
- 49 protuberantia occipitalis externa
- 50 crista pyramidis
- 51 os petrosum
- 52 protuberantia occipitalis interna
- 53 palatum molle

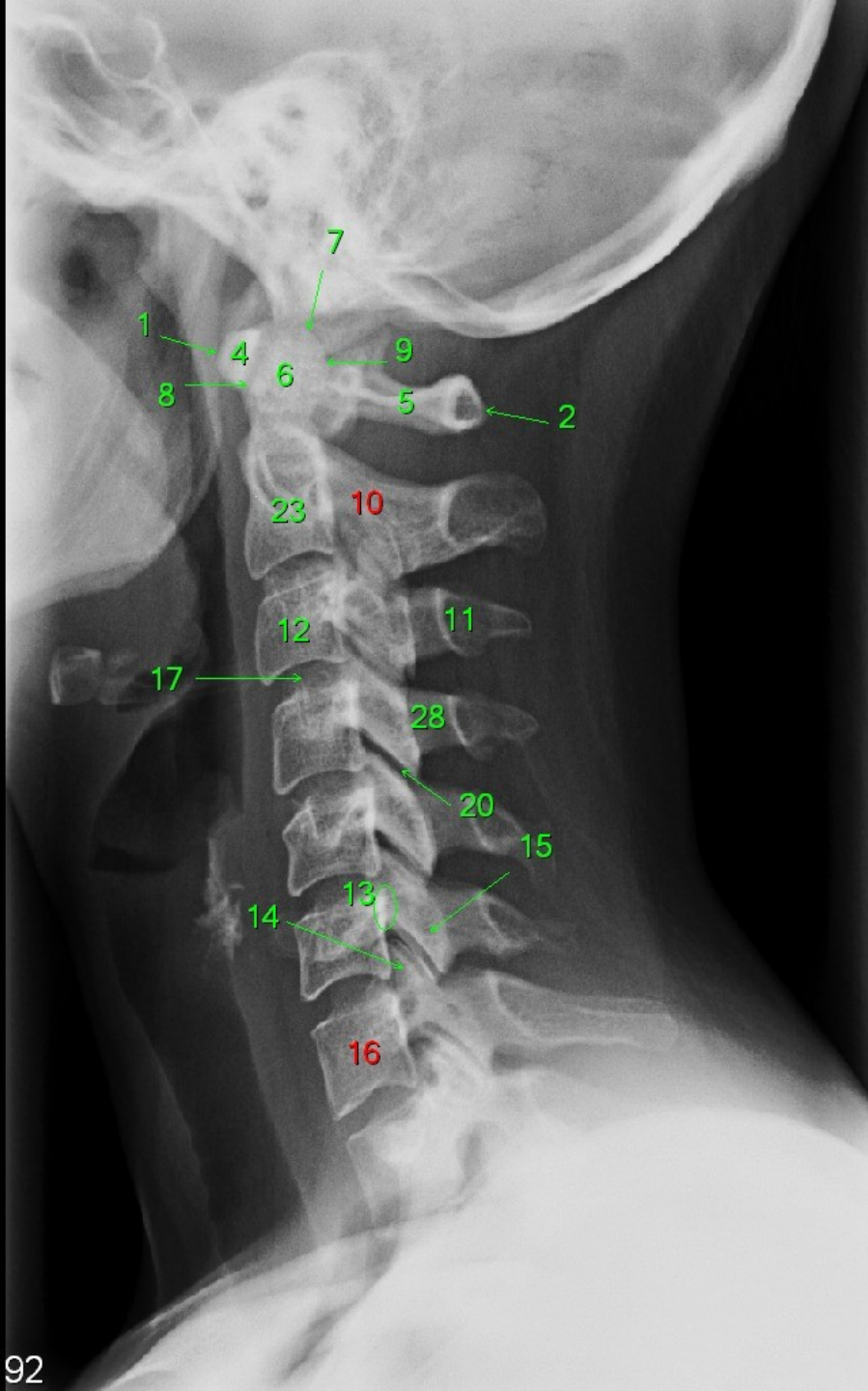
R



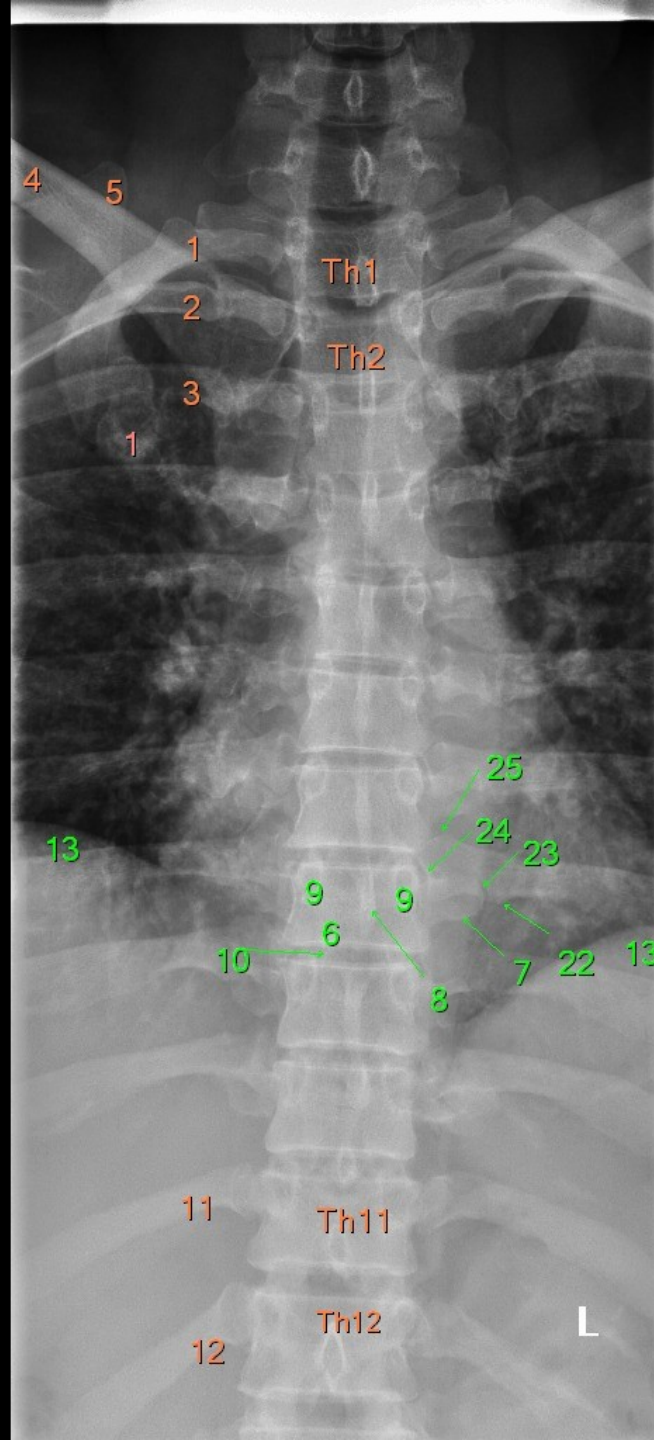
- 1 tuberculum anterius atlantis
- 2 tuberculum posterius atlantis
- 3 massa lateralis atlantis
- 4 arcus anterior atlantis
- 5 arcus posterior atlantis
- 6 dens axis
- 7 apex dentis
- 8 facies articularis anterior
- 9 facies articularis posterior
- 10 axis
- 11 processus spinosus
- 12 corpus vertebrae
- 13 pediculus arcus vertebrae
- 14 processus articularis superior
- 15 processus articularis inferior
- 16 vertebra prominens (C7)
- 17 discus intervertebralis
- 18 facies terminalis superior (C5)
- 19 facies terminalis inferior (C5)
- 20 articulatio intervertebrale
- 21 incisura vertebralis inferior
- 22 incisura vertebralis superior
- 23 corpus axis
- 24 foramen intervertebrale
- 25 condylus occipitalis
- 26 articulatio atlantooccipitalis
- 27 articulatio atlantoaxialis lateralis
- 28 arcus vertebrae



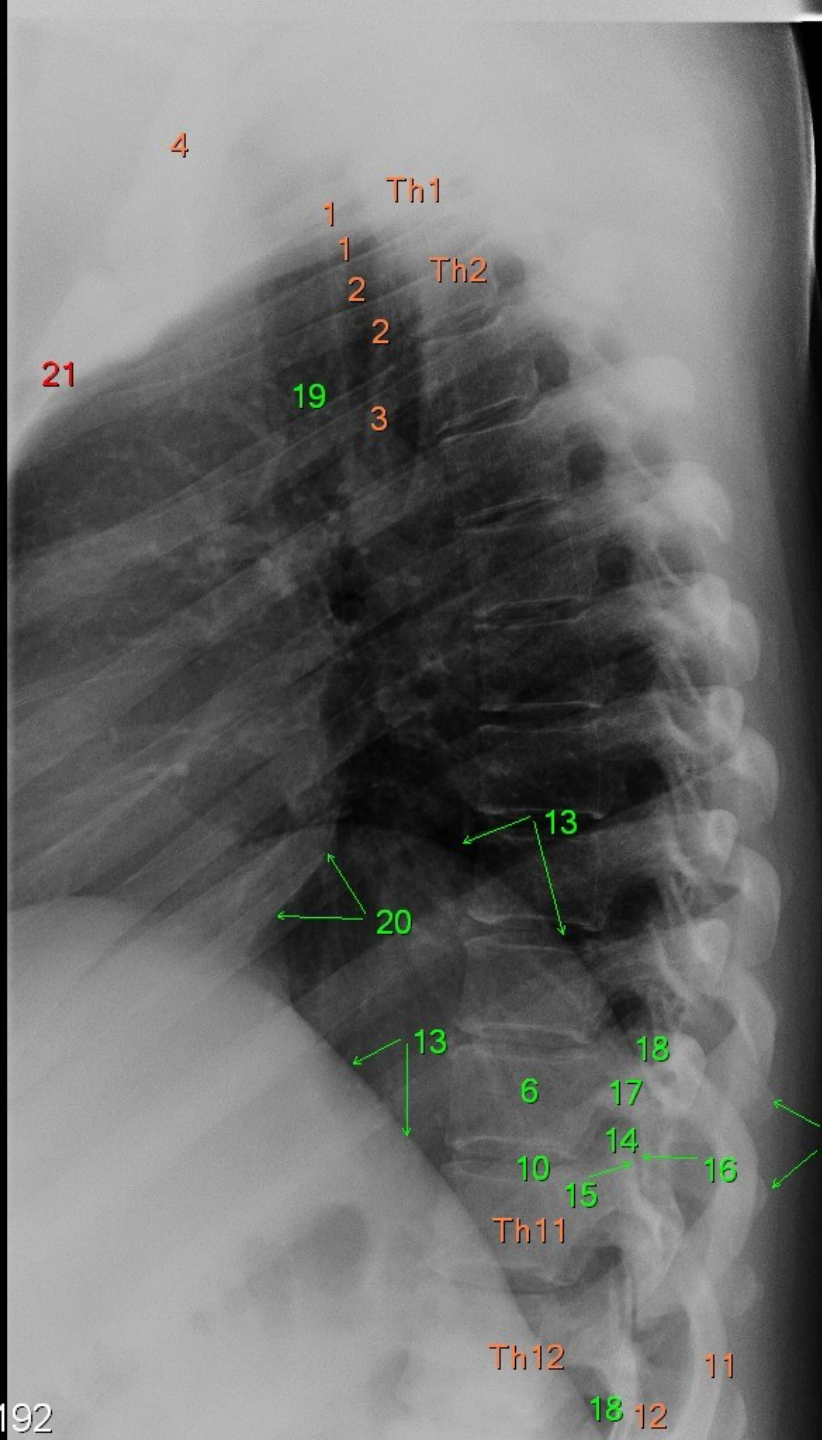
- 1 tuberculum anterius atlantis
- 2 tuberculum posterius atlantis
- 3 massa lateralis atlantis
- 4 arcus anterior atlantis
- 5 arcus posterior atlantis
- 6 dens axis
- 7 apex dentis
- 8 facies articularis anterior
- 9 facies articularis posterior
- 10 axis
- 11 processus spinosus
- 12 corpus vertebrae
- 13 pediculus arcus vertebrae
- 14 processus articularis superior
- 15 processus articularis inferior
- 16 vertebra prominens (C7)
- 17 discus intervertebralis
- 18 facies terminalis superior (C5)
- 19 facies terminalis inferior (C5)
- 20 articulatio intervertebrale
- 21 incisura vertebralis inferior
- 22 incisura vertebralis superior
- 23 corpus axis
- 24 foramen intervertebrale
- 25 condylus occipitalis
- 26 articulatio atlantooccipitalis
- 27 articulatio atlantoaxialis lateralis
- 28 arcus vertebrae



- 1 tuberculum anterius atlantis
- 2 tuberculum posterius atlantis
- 3 massa lateralis atlantis
- 4 arcus anterior atlantis
- 5 arcus posterior atlantis
- 6 dens axis
- 7 apex dentis
- 8 facies articularis anterior
- 9 facies articularis posterior
- 10 axis
- 11 processus spinosus
- 12 corpus vertebrae
- 13 pediculus arcus vertebrae
- 14 processus articularis superior
- 15 processus articularis inferior
- 16 vertebra prominens (C7)
- 17 discus intervertebralis
- 18 facies terminalis superior (C5)
- 19 facies terminalis inferior (C5)
- 20 articulatio intervertebrale
- 21 incisura vertebralis inferior
- 22 incisura vertebralis superior
- 23 corpus axis
- 24 foramen intervertebrale
- 25 condylus occipitalis
- 26 articulatio atlantooccipitalis
- 27 articulatio atlantoaxialis lateralis
- 28 arcus vertebrae

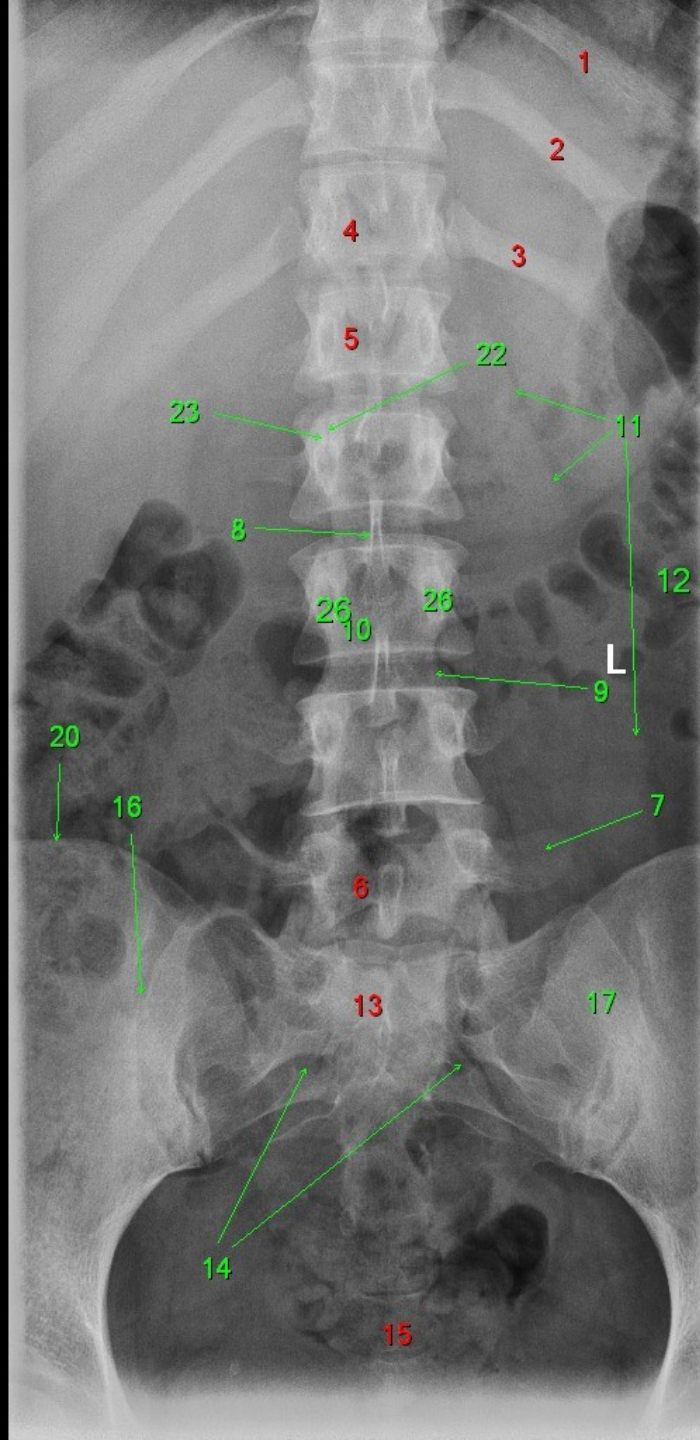


1. Costa I.
2. Costa II.
3. Costa III.
4. Clavicula
5. Scapula
6. Corpus vertebrae
7. Processus transversus
8. Processus spinosus
9. Pediculus arcus vertebrae
10. Discus intervertebralis
11. Costa XI.
12. Costa XII.
13. Diaphragma
14. Foramen intervertebrale
15. Processus articularis superior
16. Processus articularis inferior
17. Arcus vertebrae
18. Recessus costodiaphragmaticus
19. Trachea
20. Ventriculus sinister
21. Sternum
22. Tuberculum costae
23. Articulatio costotransversaria
24. Articulatio capitis costae
25. Caput costae

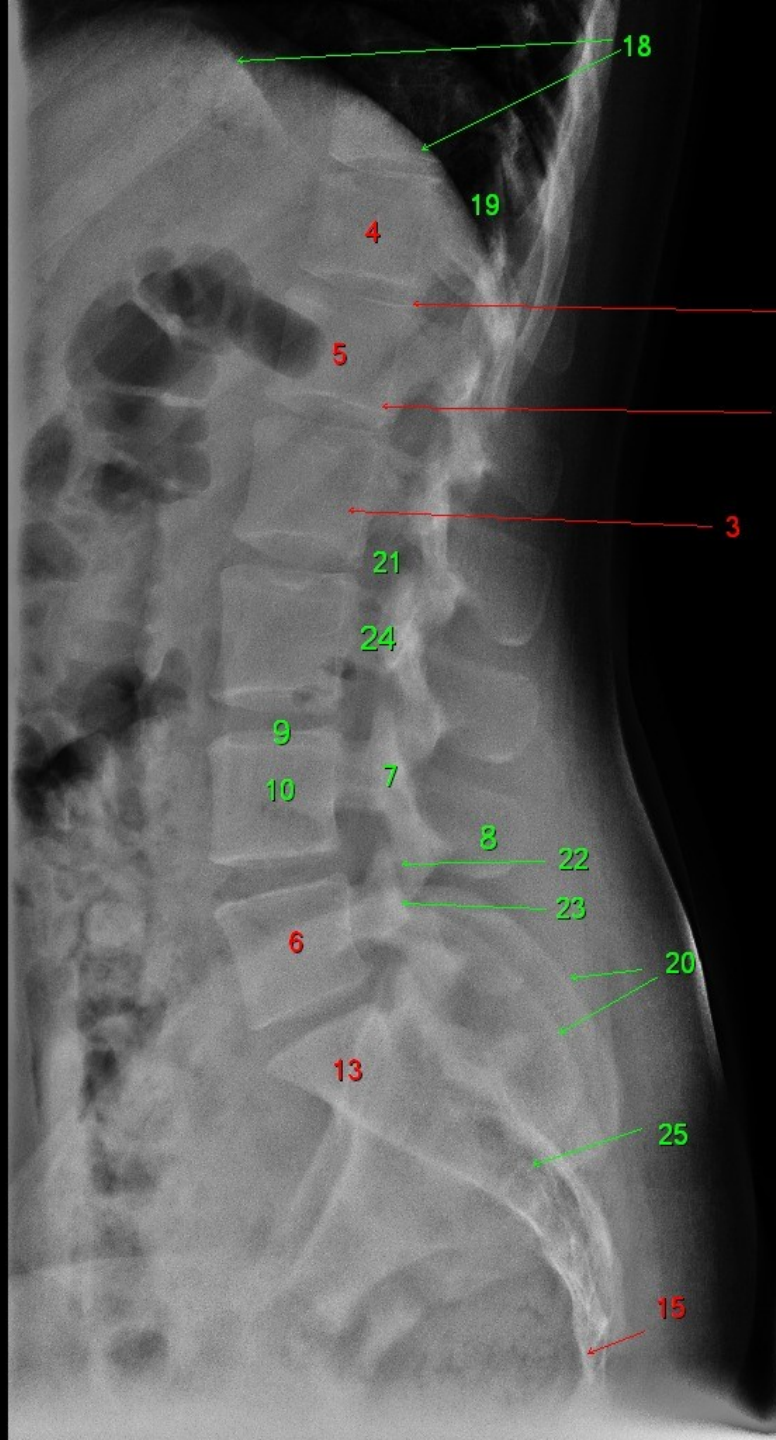


1. Costa I.
2. Costa II.
3. Costa III.
4. Clavicula
5. Scapula
6. Corpus vertebrae
7. Processus transversus
8. Processus spinosus
9. Pediculus arcus vertebrae
10. Discus intervertebralis
11. Costa XI.
12. Costa XII.
13. Diaphragma
14. Foramen intervertebrale
15. Processus articularis superior
16. Processus articularis inferior
17. Arcus vertebrae
18. Recessus costodiaphragmaticus
19. Trachea
20. Ventriculus sinister
21. Sternum
22. Tuberculum costae
23. Articulatio costotransversaria
24. Articulatio capitis costae
25. Caput costae

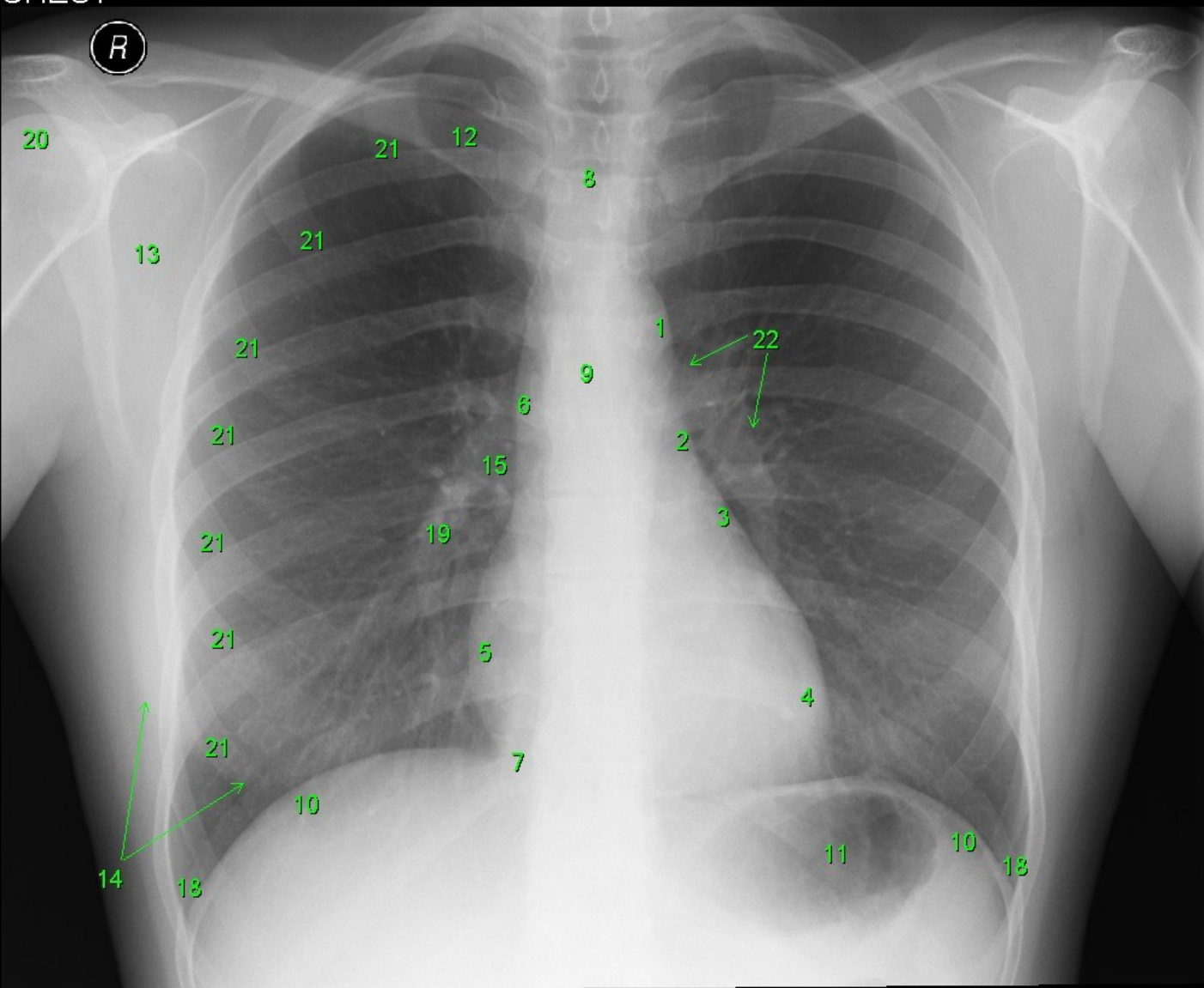




1. Costa X.
2. Costa XI.
3. Costa XII.
4. Th12
5. L1
6. L5
7. Processus transversus
8. Processus spinosus
9. Discus intervertebralis
10. Corpus vertebrae
11. Musculus psoas
12. Colon transversum
13. Os sacrum
14. Foramina sacralia
15. Os coccygis
16. Articulatio sacroiliaca
17. Pars lateralis osis sacri
18. Diaphragma
19. Recessus costodiaphragmaticus
20. Crista iliaca
21. Foramen intervertebrale
22. Processus articularis superior
23. Processus articularis inferior
24. Arcus vertebrae
25. Canalis sacralis
26. Pediculus arcus vertebrae

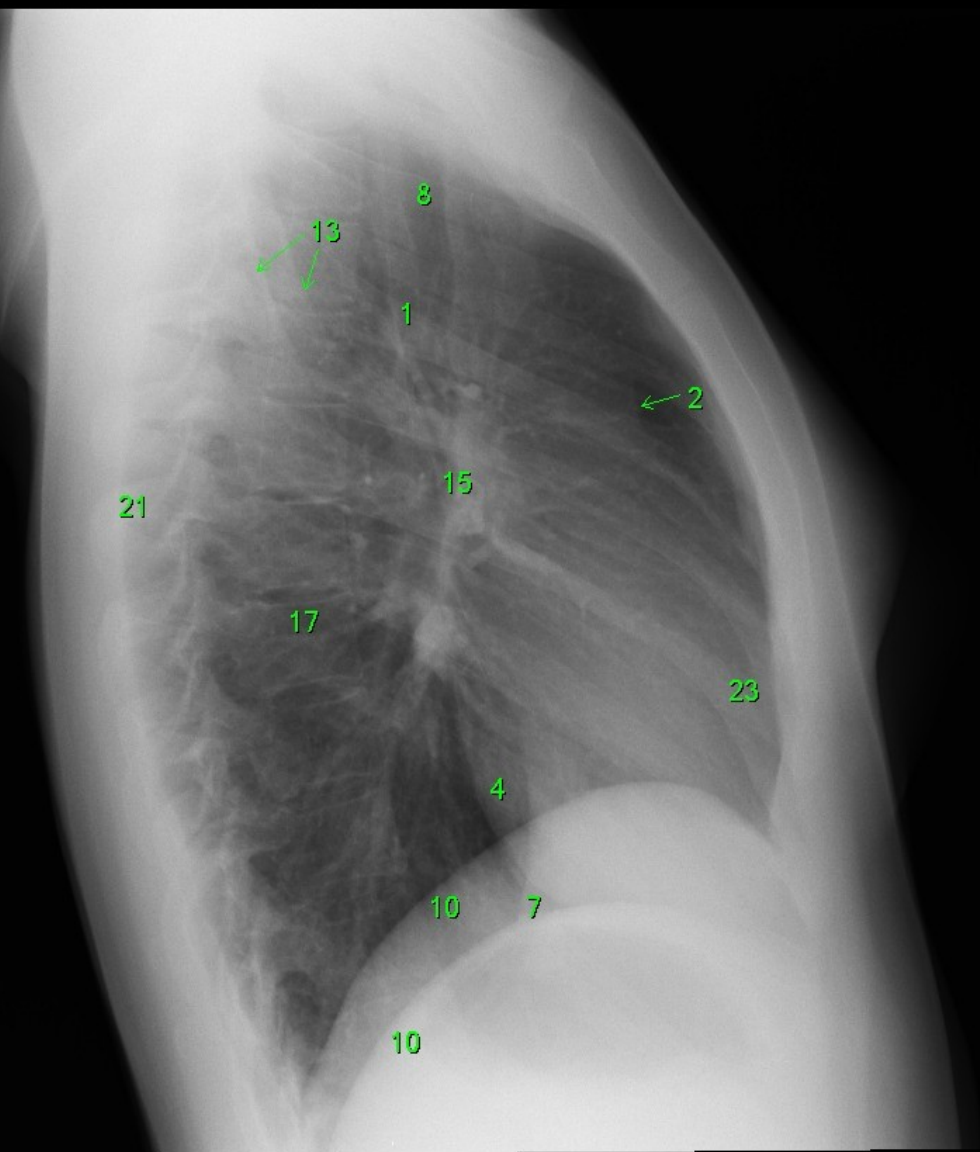


1. Costa X.
2. Costa XI.
3. Costa XII.
4. Th12
5. L1
6. L5
7. Processus transversus
8. Processus spinosus
9. Discus intervertebralis
10. Corpus vertebrae
11. Musculus psoas
12. Colon transversum
13. Os sacrum
14. Foramina sacralia
15. Os coccygis
16. Articulatio sacroiliaca
17. Pars lateralis ovis sacri
18. Diaphragma
19. Recessus costodiaphragmaticus
20. Crista iliaca
21. Foramen intervertebrale
22. Processus articularis superior
23. Processus articularis inferior
24. Arcus vertebrae
25. Canalis sacralis
26. Pediculus arcus vertebrae

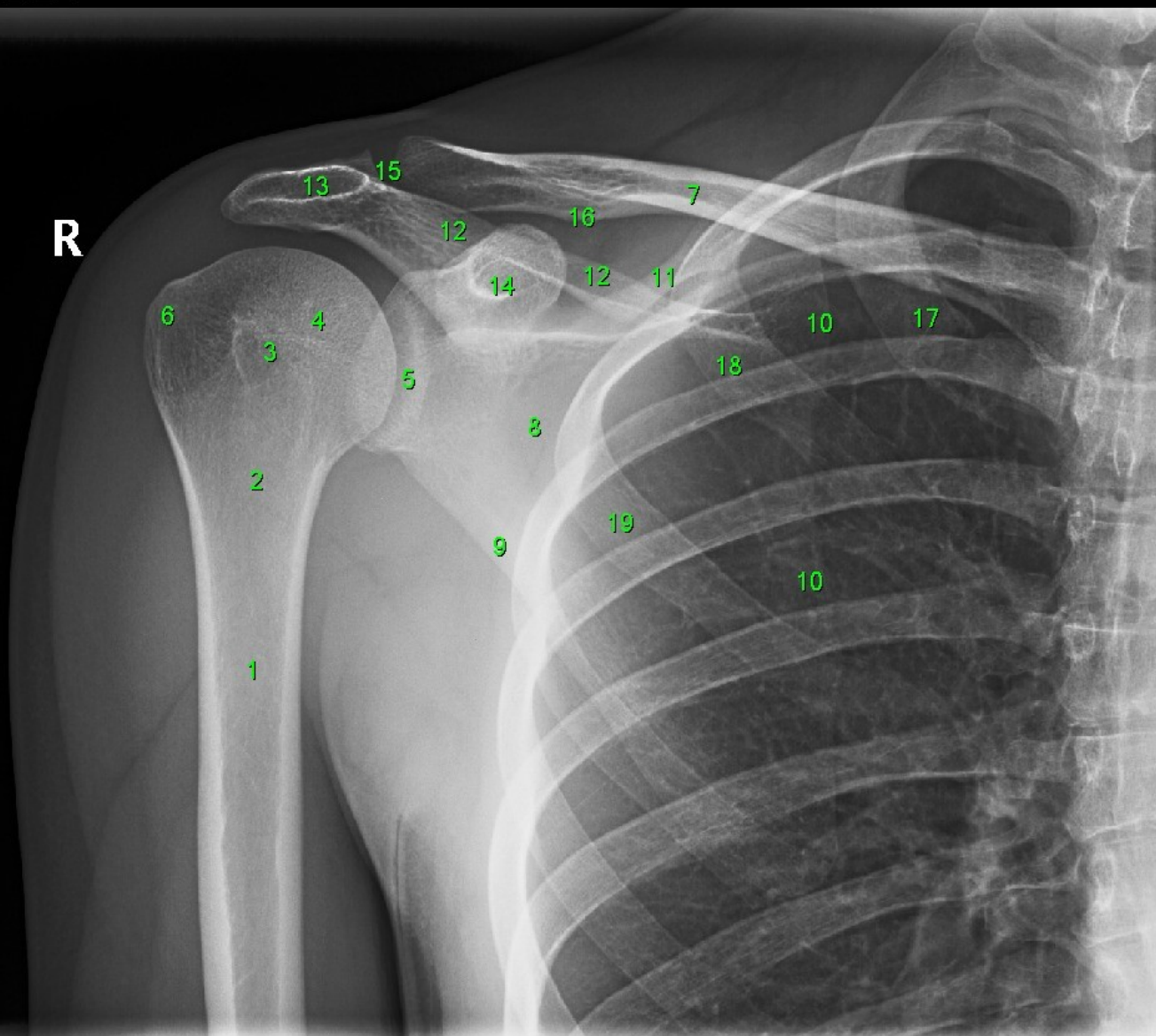


- 1 arcus aortae
- 2 truncus pulmonalis
- 3 auricula atrii sinistri
- 4 ventriculus sinister
- 5 atrium dextrum
- 6 v. cava superior
- 7 v. cava inferior
- 8 trachea
- 9 carina tracheae
- 10 diaphragma
- 11 gaster
- 12 clavicula
- 13 scapula
- 14 mamma
- 15 hilus pulmonis
- 16 sternum
- 17 corpus vertebrae
- 18 recessus costodiaphragmaticus
- 19 truncus intermedius
- 20 caput humeri
- 21 costa
- 22 a. pulmonalis sin.
- 23 ventriculus dexter

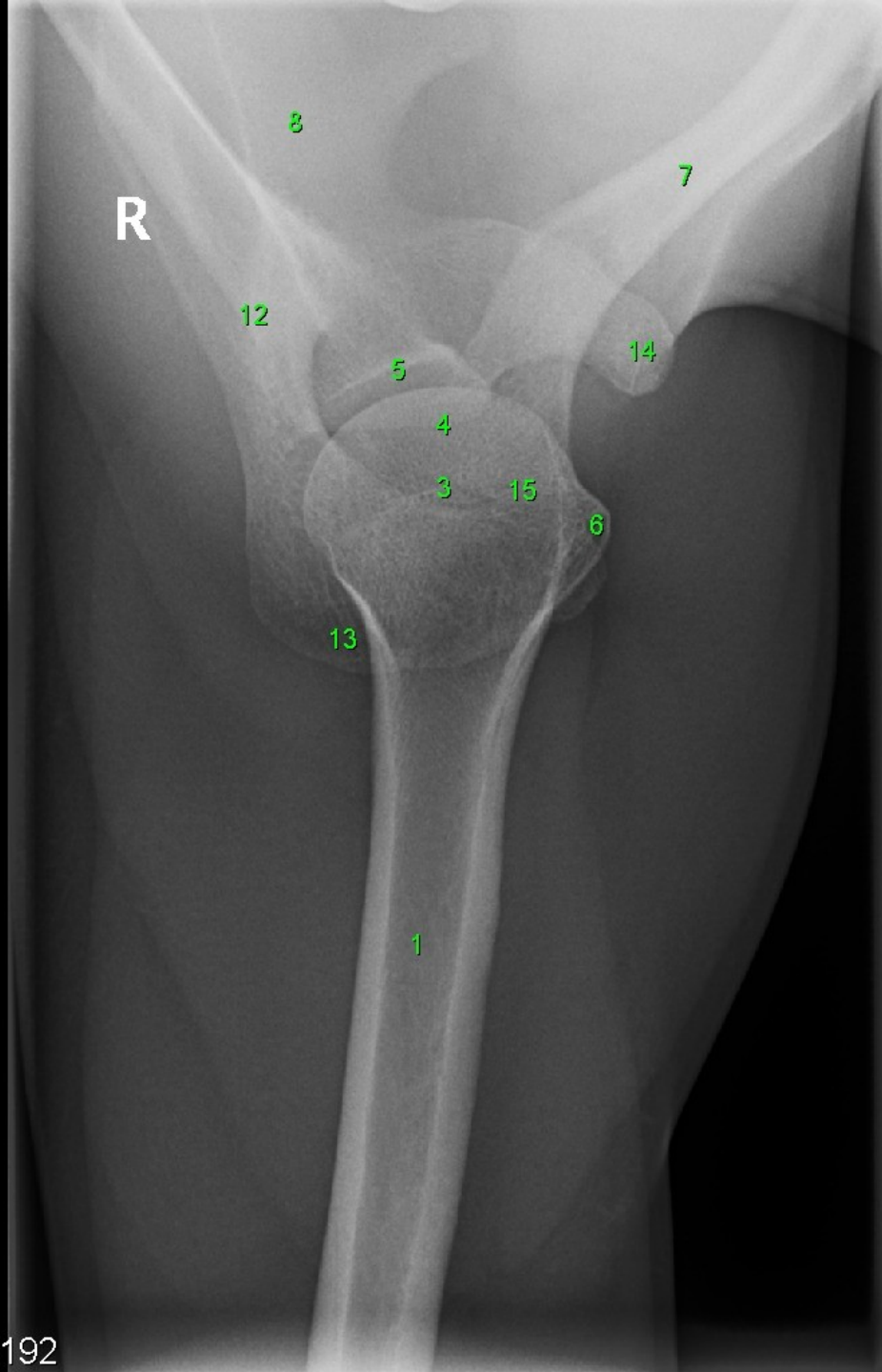
(R)



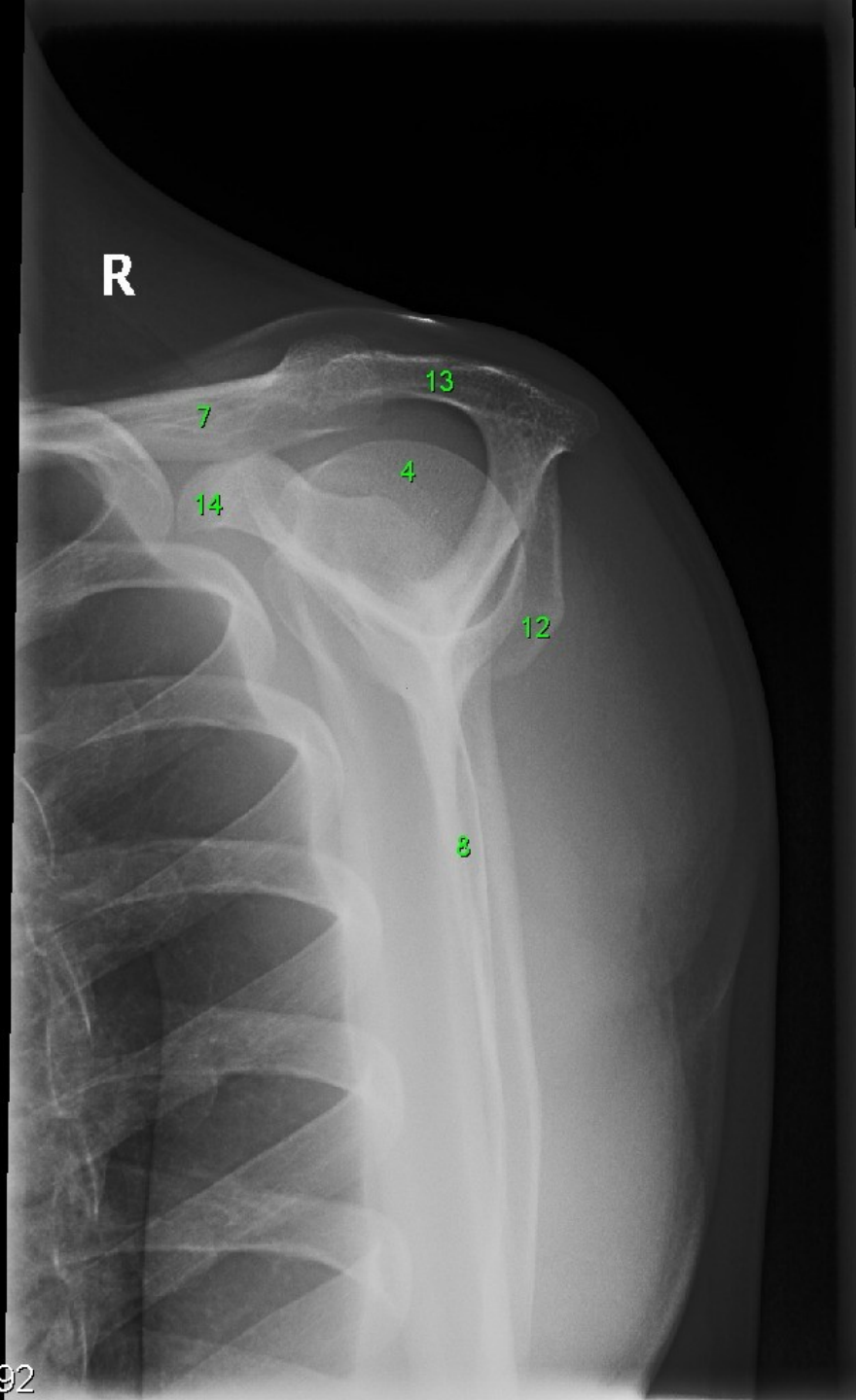
- 1 arcus aortae
- 2 truncus pulmonalis
- 3 auricula atrii sinistri
- 4 ventriculus sinister
- 5 atrium dextrum
- 6 v. cava superior
- 7 v. cava inferior
- 8 trachea
- 9 carina tracheae
- 10 diaphragma
- 11 gaster
- 12 clavicula
- 13 scapula
- 14 mamma
- 15 hilus pulmonis
- 16 sternum
- 17 corpus vertebrae
- 18 recessus costodiaphragmaticus
- 19 truncus intermedius
- 20 caput humeri
- 21 costa
- 22 a. pulmonalis sin.
- 23 ventriculus dexter



- 1 humerus
- 2 collum chirurgicum humeri
- 3 collum anatomicum humeri
- 4 caput humeri
- 5 cavitas glenoidalis scapulae
- 6 tuberculum majus humeri
- 7 clavicula
- 8 scapula
- 9 margo lateralis scapulae
- 10 margo medialis scapulae
- 11 margo superior scapulae
- 12 spina scapulae
- 13 acromion
- 14 proc. coracoideus
- 15 articulatio acromioclavicularis
- 16 tuberculum conoideum
- 17 costa I.
- 18 costa II.
- 19 costa III.

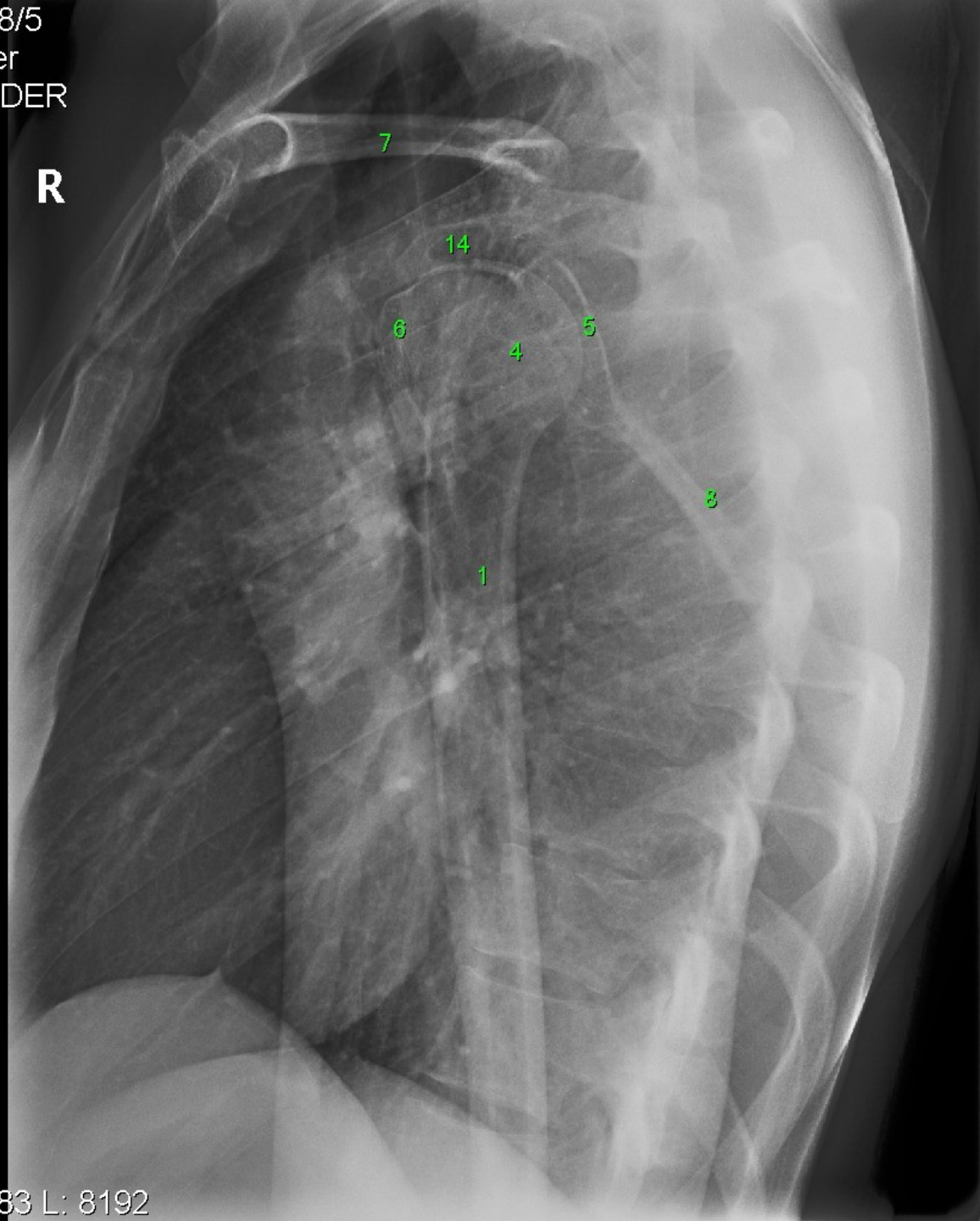


- 1 humerus
- 2 collum chirurgicum humeri
- 3 collum anatomicum humeri
- 4 caput humeri
- 5 cavitas glenoidalis scapulae
- 6 tuberculum majus humeri
- 7 clavícula
- 8 scapula
- 9 margo lateralis scapulae
- 10 margo medialis scapulae
- 11 margo superior scapulae
- 12 spina scapulae
- 13 acromion
- 14 proc. coracoideus
- 15 articulatio acromioclavicularis
- 16 tuberculum conoideum
- 17 costa I.
- 18 costa II.
- 19 costa III.



- 1 humerus
- 2 collum chirurgicum humeri
- 3 collum anatomicum humeri
- 4 caput humeri
- 5 cavitas glenoidalis scapulae
- 6 tuberculum majus humeri
- 7 clavícula
- 8 scapula
- 9 margo lateralis scapulae
- 10 margo medialis scapulae
- 11 margo superior scapulae
- 12 spina scapulae
- 13 acromion
- 14 proc. coracoideus
- 15 articulatio acromioclavicularis
- 16 tuberculum conoideum
- 17 costa I.
- 18 costa II.
- 19 costa III.

R



- 1 humerus
- 2 collum chirurgicum humeri
- 3 collum anatomicum humeri
- 4 caput humeri
- 5 cavitas glenoidalis scapulae
- 6 tuberculum majus humeri
- 7 clavícula
- 8 scapula
- 9 margo lateralis scapulae
- 10 margo medialis scapulae
- 11 margo superior scapulae
- 12 spina scapulae
- 13 acromion
- 14 proc. coracoideus
- 15 articulatio acromioclavicularis
- 16 tuberculum conoideum
- 17 costa I.
- 18 costa II.
- 19 costa III.



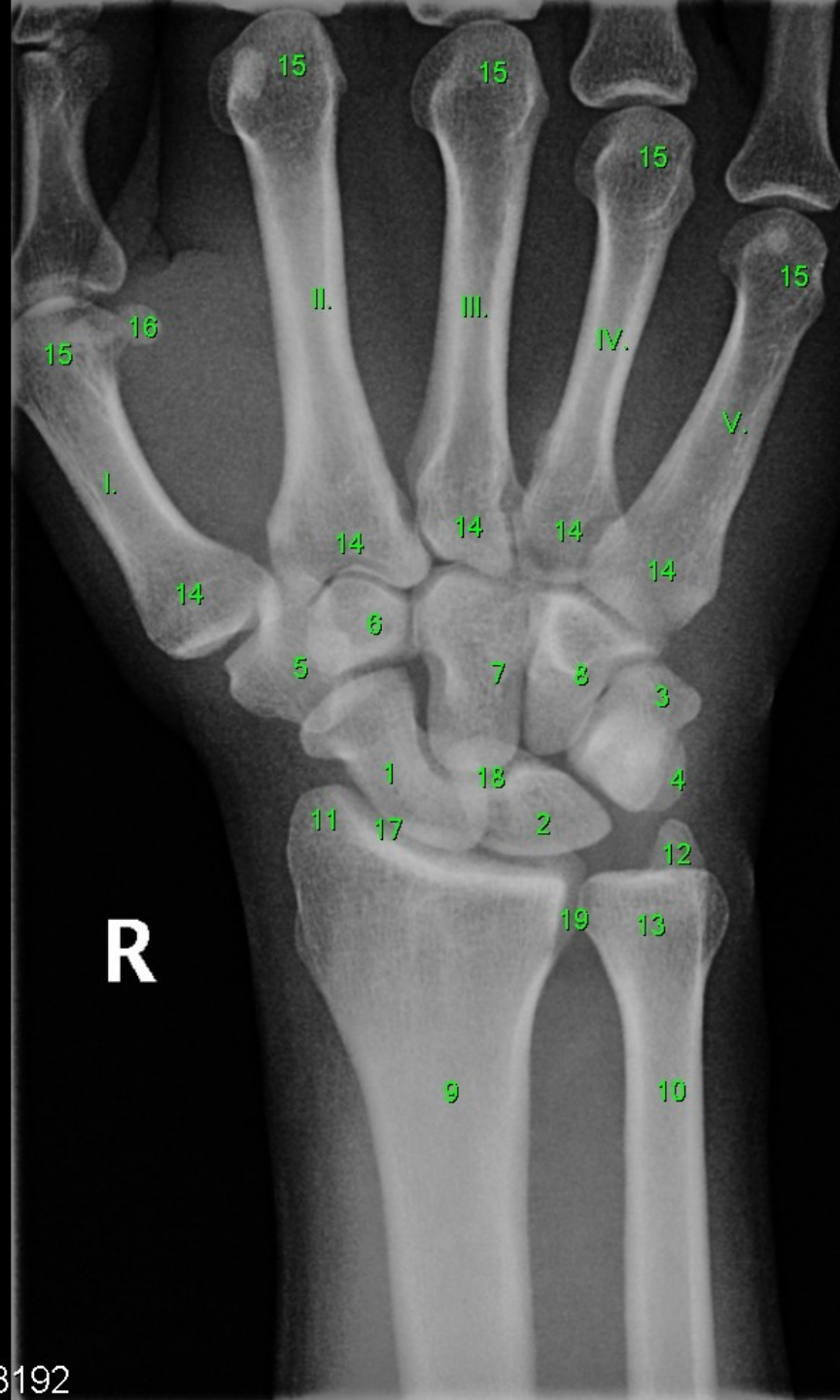
R



- 1 humerus
- 2 radius
- 3 ulna
- 4 trochlea humeri
- 5 capitulum humeri
- 6 caput radii
- 7 articulatio radioulnaris proximalis
- 8 fossa olecrani
- 9 olecranon
- 10 processus coronoideus ulnae
- 11 tuberositas radii
- 12 epicondylus lateralis (radialis) humeri
- 13 epicondylus medialis (ulnaris) humeri
- 14 anterior fat pad
- 15 sulcus nervi ulnaris
- 16 incisura trochlearis



- 1 os scaphoideum
- 2 os lunatum
- 3 os triquetrum
- 4 os pisiforme
- 5 os trapezium
- 6 os trapezoideum
- 7 os capitatum
- 8 os hamatum
- 9 radius
- 10 ulna
- 11 proc. styloideus radii
- 12 proc. styloideus ulnae
- 13 caput ulnae
- 14 basis ossis metacarpi
- 15 articulatio radiocarpalis
- 16 articulatio mediocarpalis
- 17 articulatio radioulnaris distalis
- 18 articulatio radioulnaris proximalis
- 19 caput radii
- 20 processus coronoideus ulnae
- 21 tuberositas radii
- 22 trochlea humeri
- 23 capitulum humeri
- 24 humerus
- 25 fossa olecrani
- 26 olecranon
- 27 epicondylus medialis (ulnaris) humeri
- 28 sulcus nervi ulnaris
- 29 anterior fat pad (ventrální tukové těleso)
- I., II., III., IV., V. os metacarpi



- 1 os scaphoideum
- 2 os lunatum
- 3 os triquetrum
- 4 os pisiforme
- 5 os trapezium
- 6 os trapezoideum
- 7 os capitatum
- 8 os hamatum
- 9 radius
- 10 ulna
- 11 proc. styloideus radii
- 12 proc. styloideus ulnae
- 13 caput ulnae
- 14 basis ossis metacarpi
- 15 caput ossis metacarpi
- 16 os sesamoides
- 17 articulatio radiocarpalis
- 18 articulatio mediocarpalis
- 19 articulatio radioulnaris distalis

R

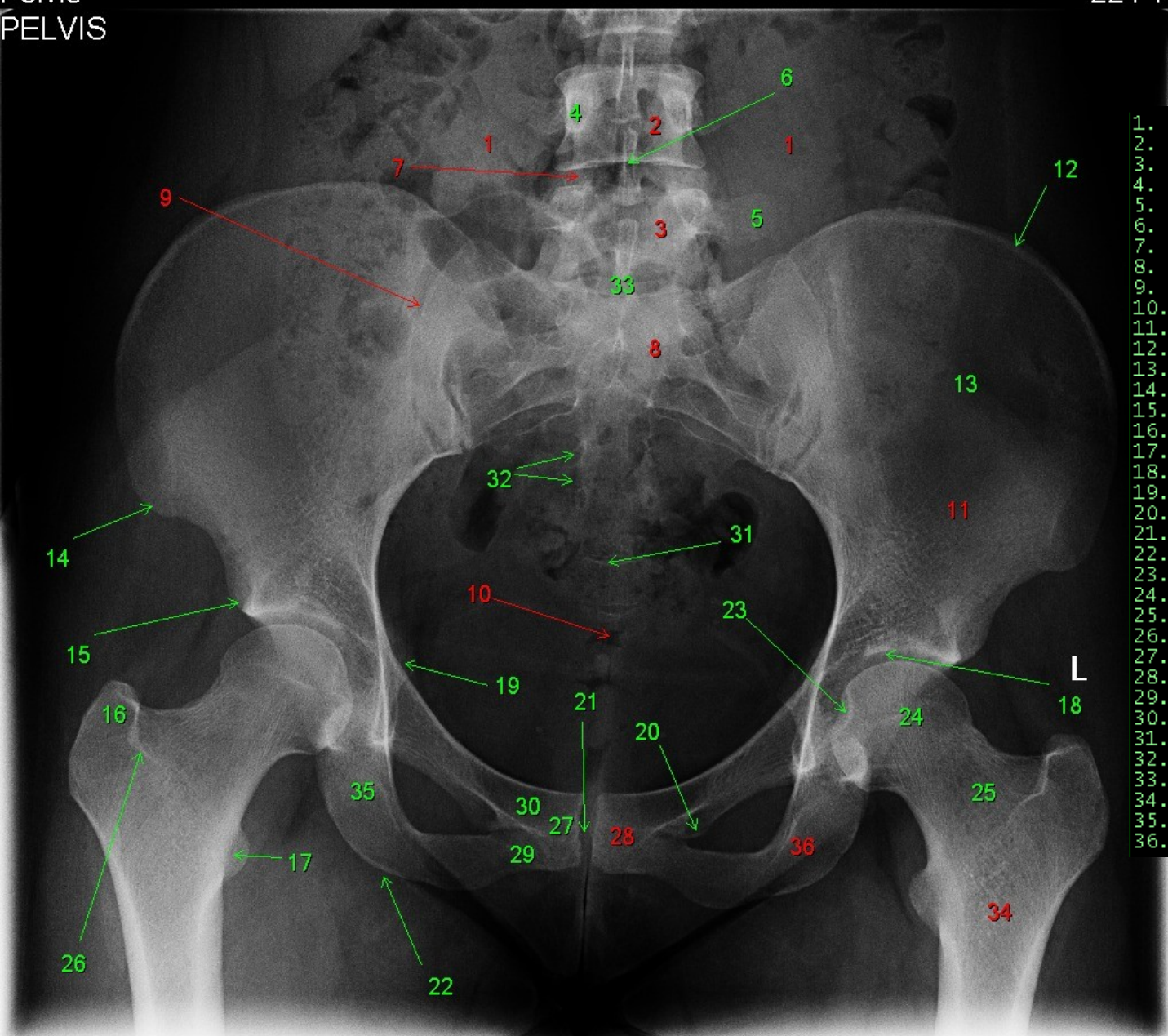
R



L

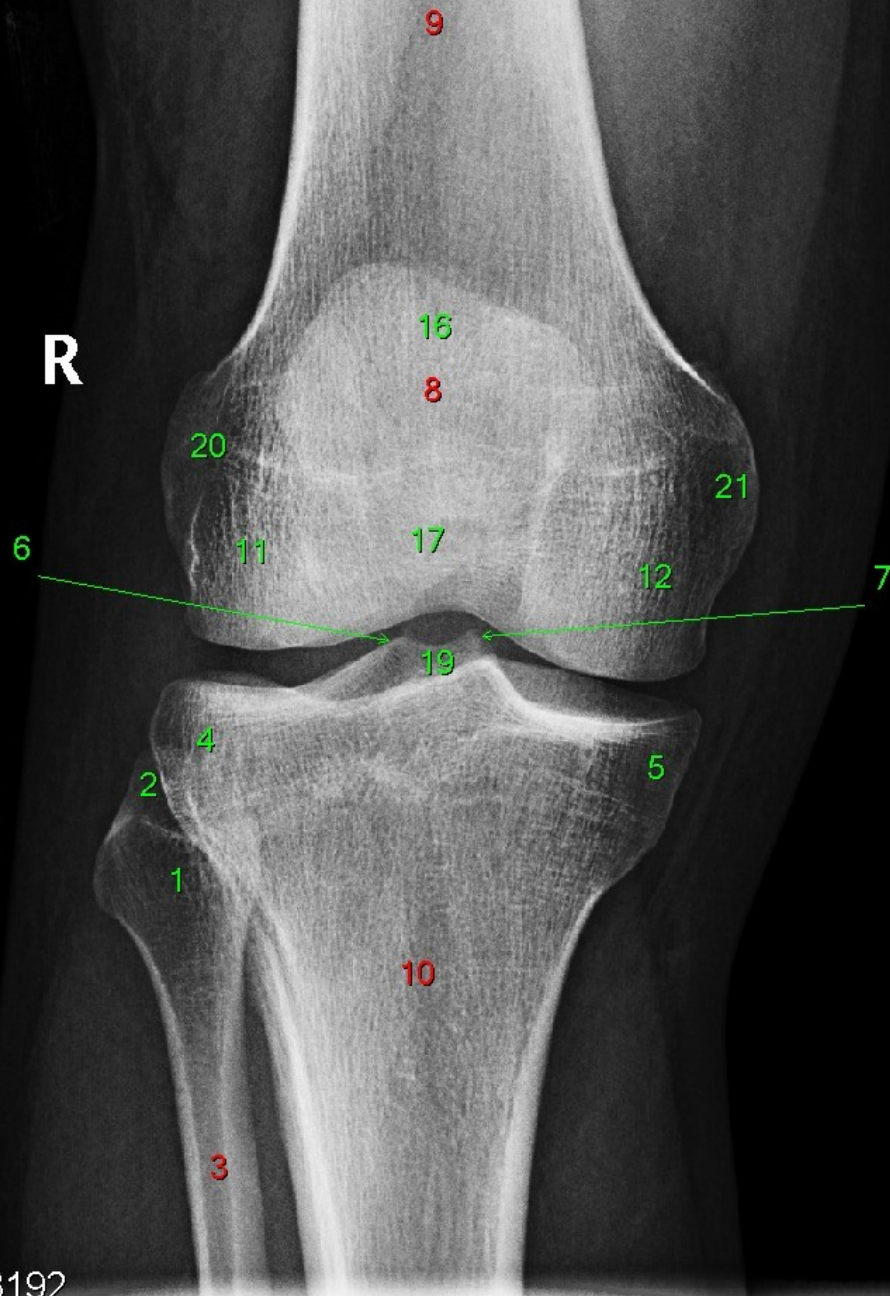


- 1 os scaphoideum
- 2 os lunatum
- 3 os triquetrum
- 4 os pisiforme
- 5 os trapezium
- 6 os trapezoideum
- 7 os capitatum
- 8 os hamatum
- 9 radius
- 10 ulna
- 11 proc. styloideus radii
- 12 proc. styloideus ulnae
- 13 caput ulnae
- 14 basis ossis metacarpi
- 15 caput ossis metacarpi
- 16 os sesamoideum
- 17 articulatio radiocarpalis
- 18 articulatio mediocarpalis
- 19 articulatio radioulnaris distalis
- 20 hamulus ossis hamati
- 21 phalanx proximalis manus
- 22 phalanx media manus
- 23 phalanx distalis manus
- 24 articulationes carpometacarpales
- 25 articulationes intercarpales
- 26 basis phalangis manus
- 27 caput phalangis manus
- 28 articulationes metacarpophalangeae
- I., II., III., IV., V. os metacarpi

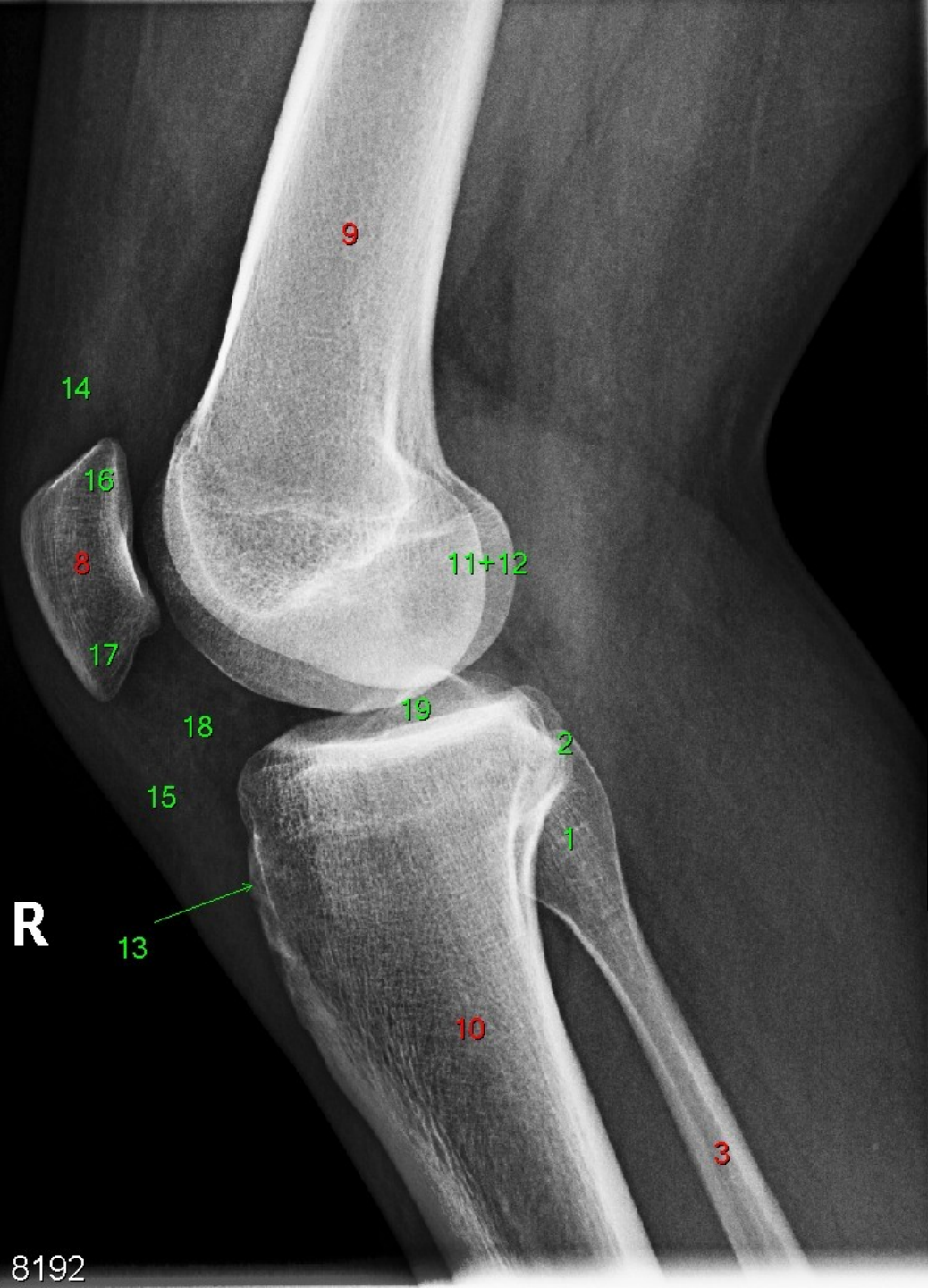


- 1. m. psoas
- 2. vertebra L4
- 3. vertebra L5
- 4. pediculus arcus vertebrae
- 5. processus costarius
- 6. processus spinosus
- 7. discus intervertebralis
- 8. os sacrum
- 9. articulatio sacroiliaca
- 10. os coccygeum
- 11. os ilium
- 12. crista iliaca
- 13. ala ossis ilii
- 14. spina iliaca anterior superior
- 15. spina iliaca anterior inferior
- 16. trochanter major
- 17. trochanter minor
- 18. acetabulum
- 19. spina ischiadica
- 20. tuberculum pubicum
- 21. symphysis pubica
- 22. tuber ischiadicum
- 23. fovea capitis femoris
- 24. caput femoris
- 25. collum femoris
- 26. crista intertrochanterica
- 27. corpus ossis pubis
- 28. os pubis
- 29. ramus inferior ossis pubis
- 30. ramus superior ossis pubis
- 31. apex ossis sacri
- 32. foramina sacralia pelvina
- 33. basis ossis sacri
- 34. femur
- 35. ramus ossis ischii
- 36. os ischii

R



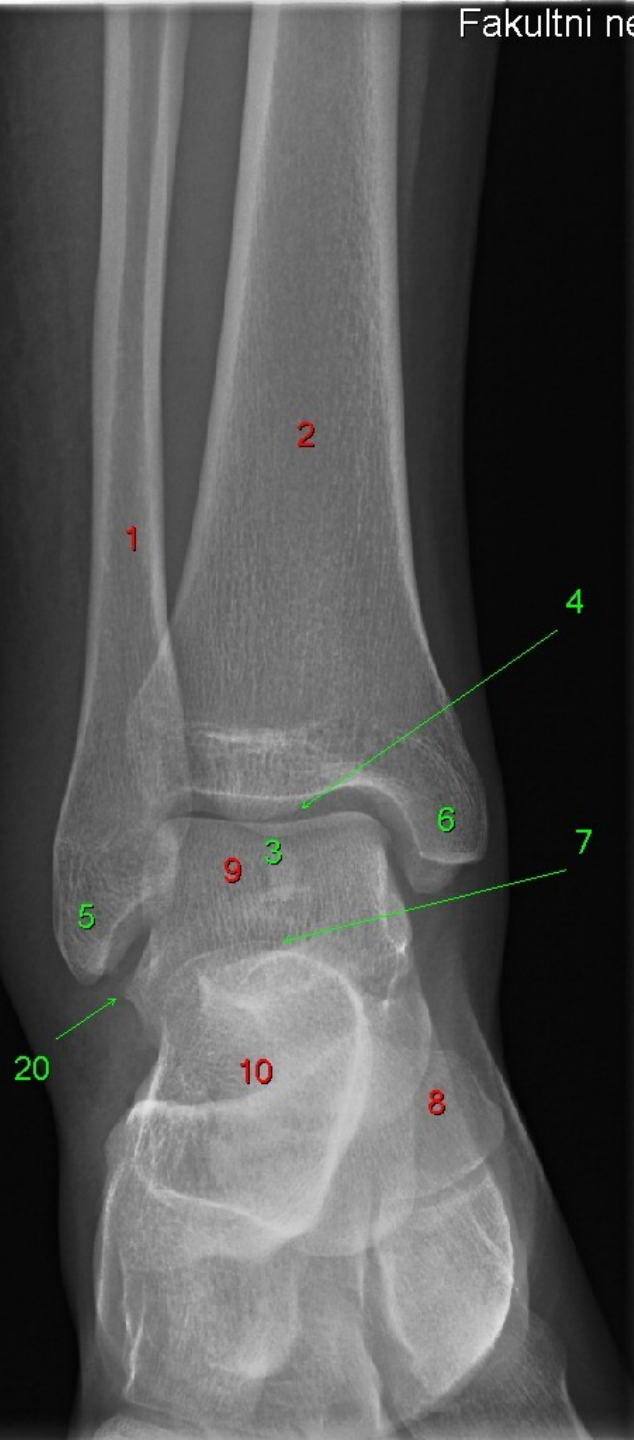
- 1 Caput fibulae
- 2 Apex capitis fibulae
- 3 Fibula
- 4 Condylus lateralis tibiae
- 5 Condylus medialis tibiae
- 6 Tuberculum intercondylicum fibulare
- 7 Tuberculum intercondylicum tibiale
- 8 Patella
- 9 Femur
- 10 Tibia
- 11 Condylus lateralis femoris
- 12 Condylus medialis femoris
- 13 Tuberositas tibiae
- 14 M. rectus femoris - tendon
- 15 Lig. Patellae
- 16 Basis patellae
- 17 Apex patellae
- 18 Corpus adiposum infrapatellare (Hoffovo téleso)
- 19 Eminentia intercondylaris
- 20 Epicondylus lateralis femoris
- 21 Epicondylus medialis femoris



- 1 Caput fibulae
- 2 Apex capitis fibulae
- 3 Fibula
- 4 Condylus lateralis tibiae
- 5 Condylus medialis tibiae
- 6 Tuberculum intercondylicum fibulare
- 7 Tuberculum intercondylicum tibiale
- 8 Patella
- 9 Femur
- 10 Tibia
- 11 Condylus lateralis femoris
- 12 Condylus medialis femoris
- 13 Tuberositas tibiae
- 14 M. rectus femoris - tendon
- 15 Lig. Patellae
- 16 Basis patellae
- 17 Apex patellae
- 18 Corpus adiposum infrapatellare (Hoffovo těleso)
- 19 Eminentia intercondylaris
- 20 Epicondylus lateralis femoris
- 21 Epicondylus medialis femoris

R

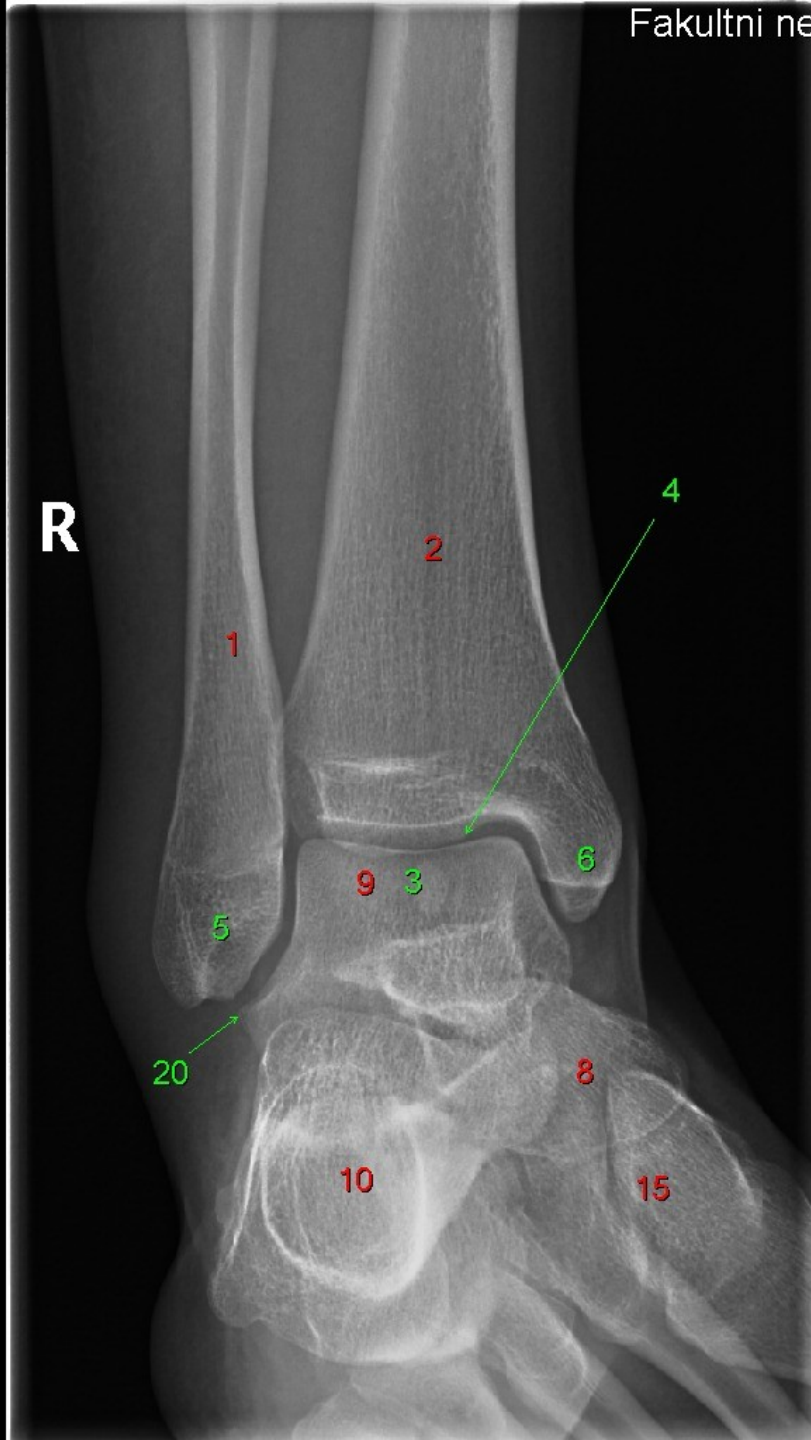
R



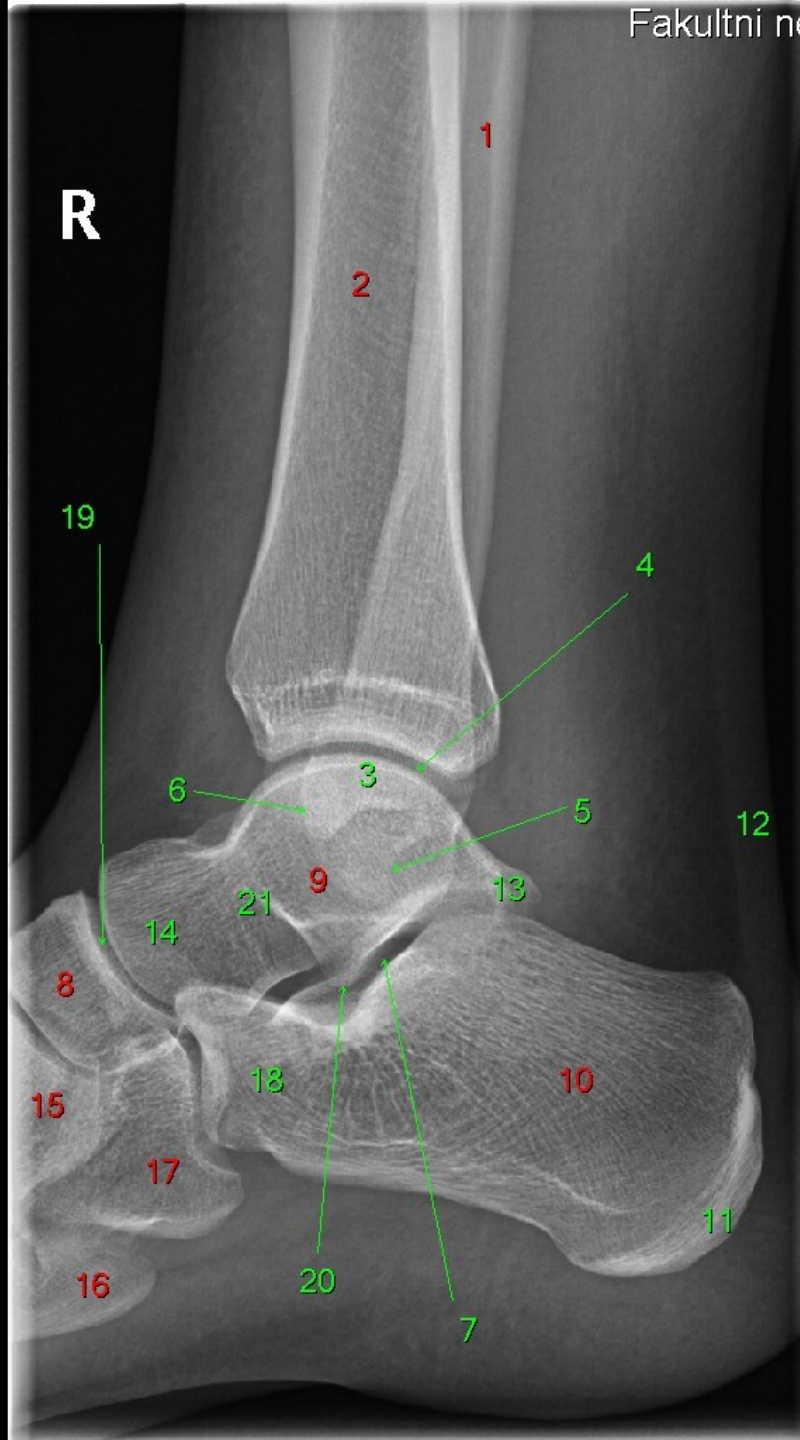
- 1 Fibula
- 2 Tibia
- 3 Trochlea tali
- 4 Articulatio talocruralis
- 5 Malleolus lateralis
- 6 Malleolus medialis
- 7 Articulatio subtalaris
- 8 Os naviculare
- 9 Talus
- 10 Calcaneus
- 11 Tuber calcanei
- 12 Tendo calcaneus - Achilles tendon
- 13 Processus posterior tali
- 14 Caput tali
- 15 Ossa cuneiformia
- 16 Os metatarsi V.
- 17 Os cuboideum
- 18 Processus anterior calcanei
- 19 Articulatio tarsi transversa seu Choparti
- 20 Processus lateralis tali
- 21 Collum tali



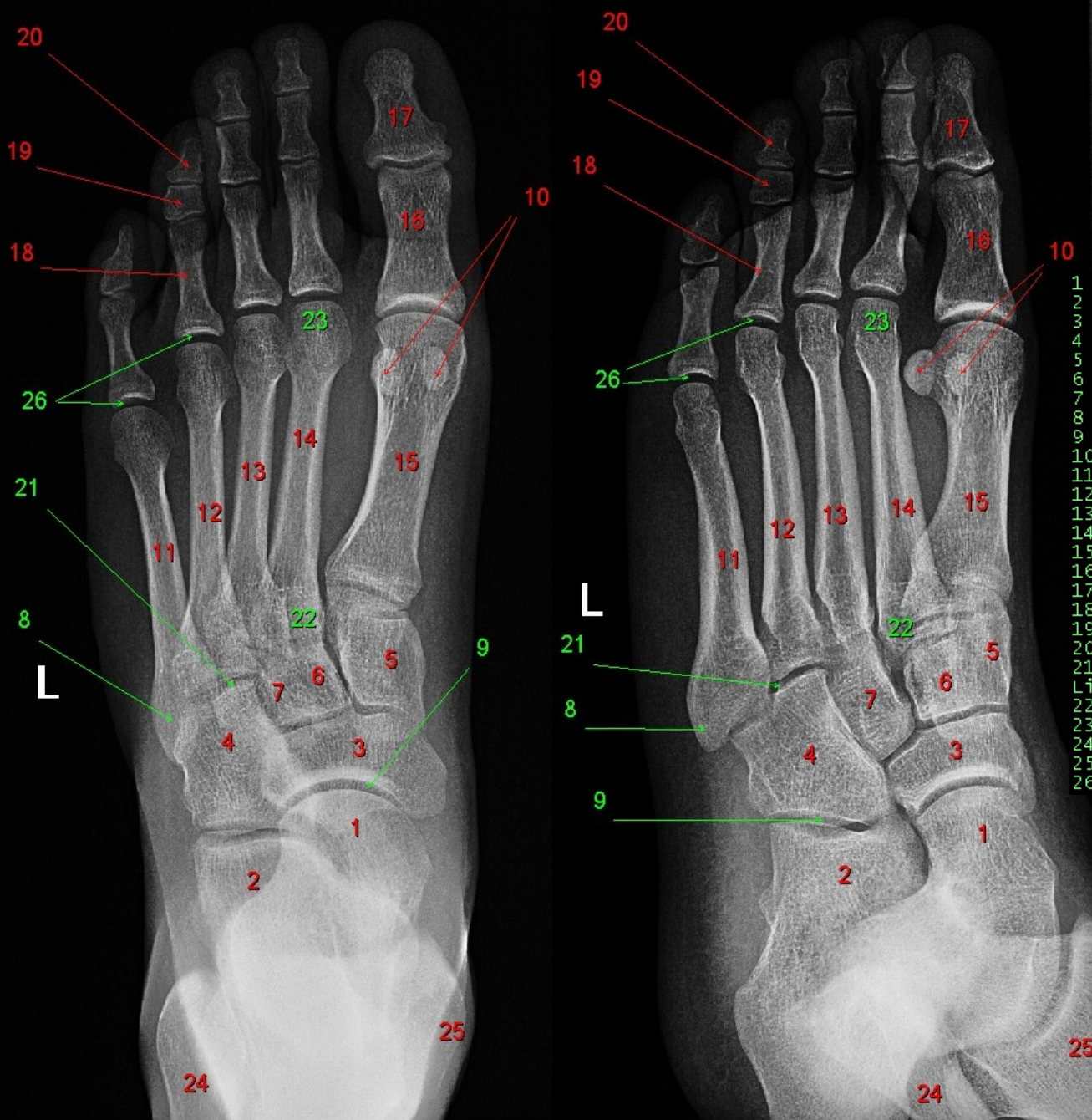
R



- 1 Fibula
- 2 Tibia
- 3 Trochlea tali
- 4 Articulatio talocruralis
- 5 Malleolus lateralis
- 6 Malleolus medialis
- 7 Articulatio subtalaris
- 8 Os naviculare
- 9 Talus
- 10 Calcaneus
- 11 Tuber calcanei
- 12 Tendo calcaneus - Achilles tendon
- 13 Processus posterior tali
- 14 Caput tali
- 15 Ossa cuneiformia
- 16 Os metatarsi V.
- 17 Os cuboideum
- 18 Processus anterior calcanei
- 19 Articulatio tarsi transversa seu Choparti
- 20 Processus lateralis tali
- 21 Collum tali



- 1 Fibula
- 2 Tibia
- 3 Trochlea tali
- 4 Articulatio talocruralis
- 5 Malleolus lateralis
- 6 Malleolus medialis
- 7 Articulatio subtalaris
- 8 Os naviculare
- 9 Talus
- 10 Calcaneus
- 11 Tuber calcanei
- 12 Tendo calcaneus - Achilles tendon
- 13 Processus posterior tali
- 14 Caput tali
- 15 Ossa cuneiformia
- 16 Os metatarsi V.
- 17 Os cuboideum
- 18 Processus anterior calcanei
- 19 Articulatio tarsi transversa seu Choparti
- 20 Processus lateralis tali
- 21 Collum tali



- 1 Talus
- 2 Calcaneus
- 3 Os naviculare
- 4 os cuboideum
- 5 os cuneiforme mediale
- 6 os cuneiforme intermedium
- 7 os cuneiforme laterale
- 8 Tuberositas ossis metatarsalis quinti
- 9 Articulatio tarsi transversa seu Choparti
- 10 Ossa sesamoidea
- 11 os metatarsi V.
- 12 os metatarsi IV.
- 13 os metatarsi III.
- 14 os metatarsi II.
- 15 os metatarsi I.
- 16 Phalanx proximalis hallucis
- 17 Phalanx distalis hallucis
- 18 Phalanx proximalis
- 19 Phalanx media
- 20 Phalanx distalis
- 21 Articulaciones tarsometatarsales seu Lissfranci
- 22 Bassis ossis metatarsi
- 23 Caput ossis metatarsi
- 24 Fibula
- 25 Tibia
- 26 Articulationes metatarsophalangeae