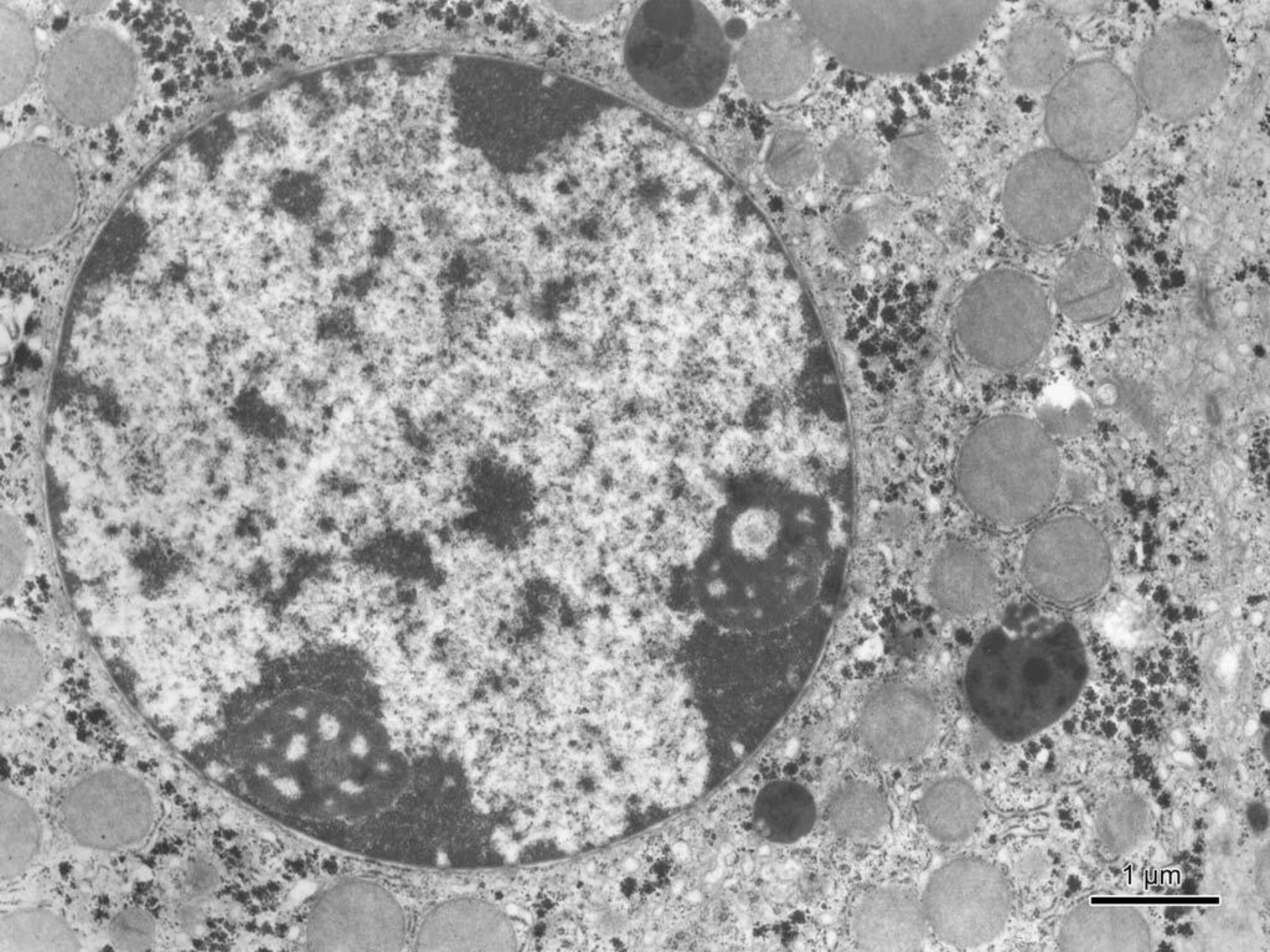


M U N I
M E D

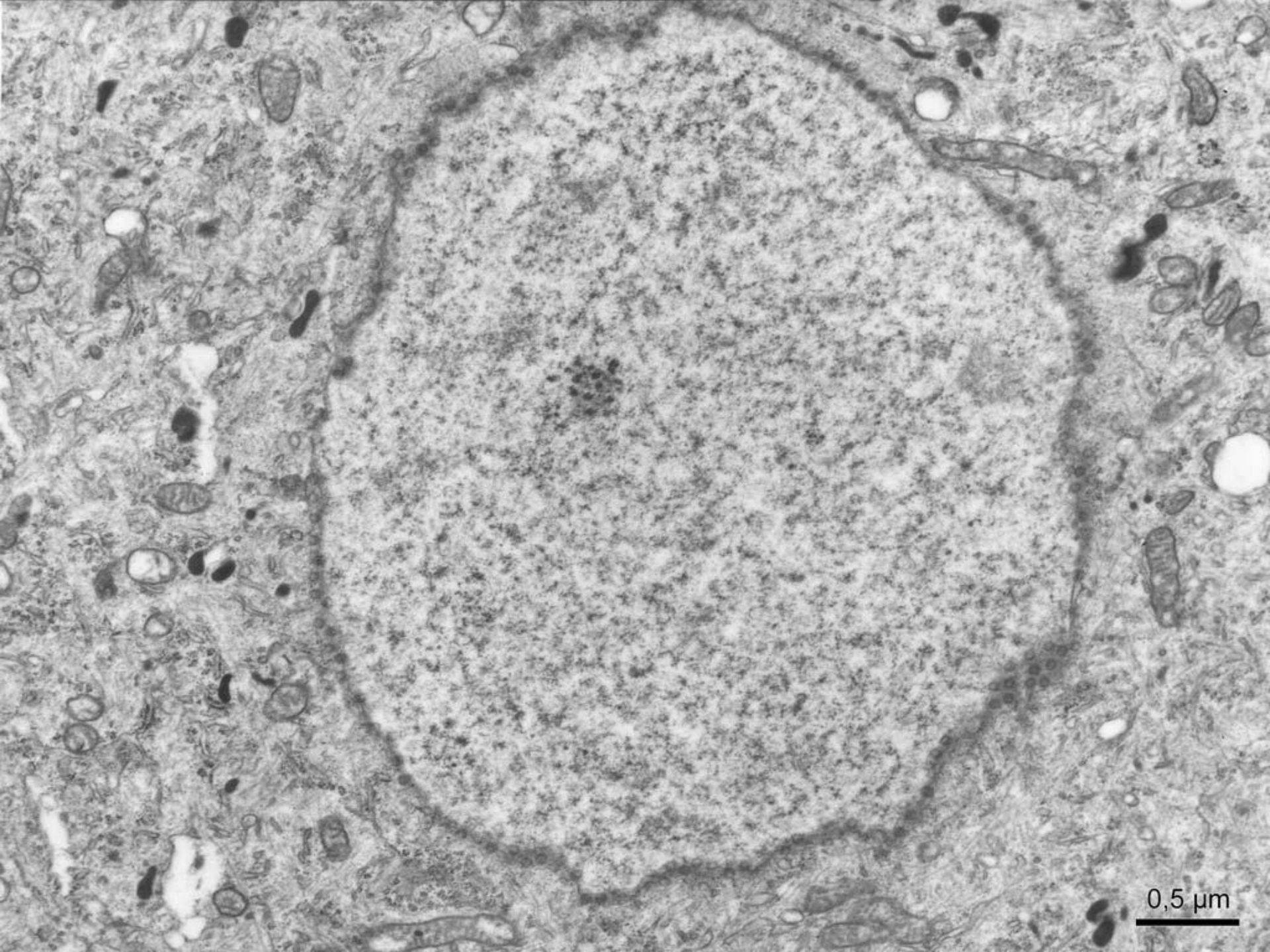
CYTOLOGY I

Ultrastructure of nucleus and cell organelles

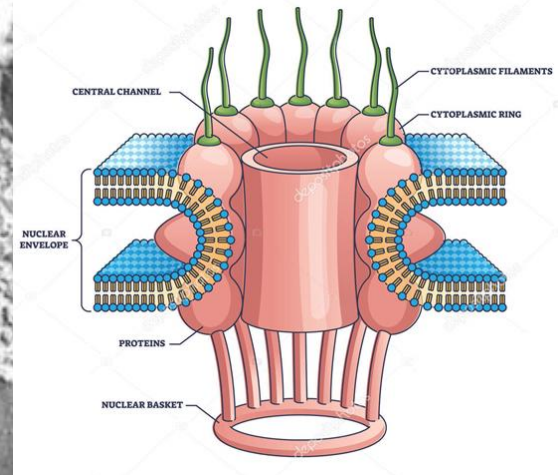
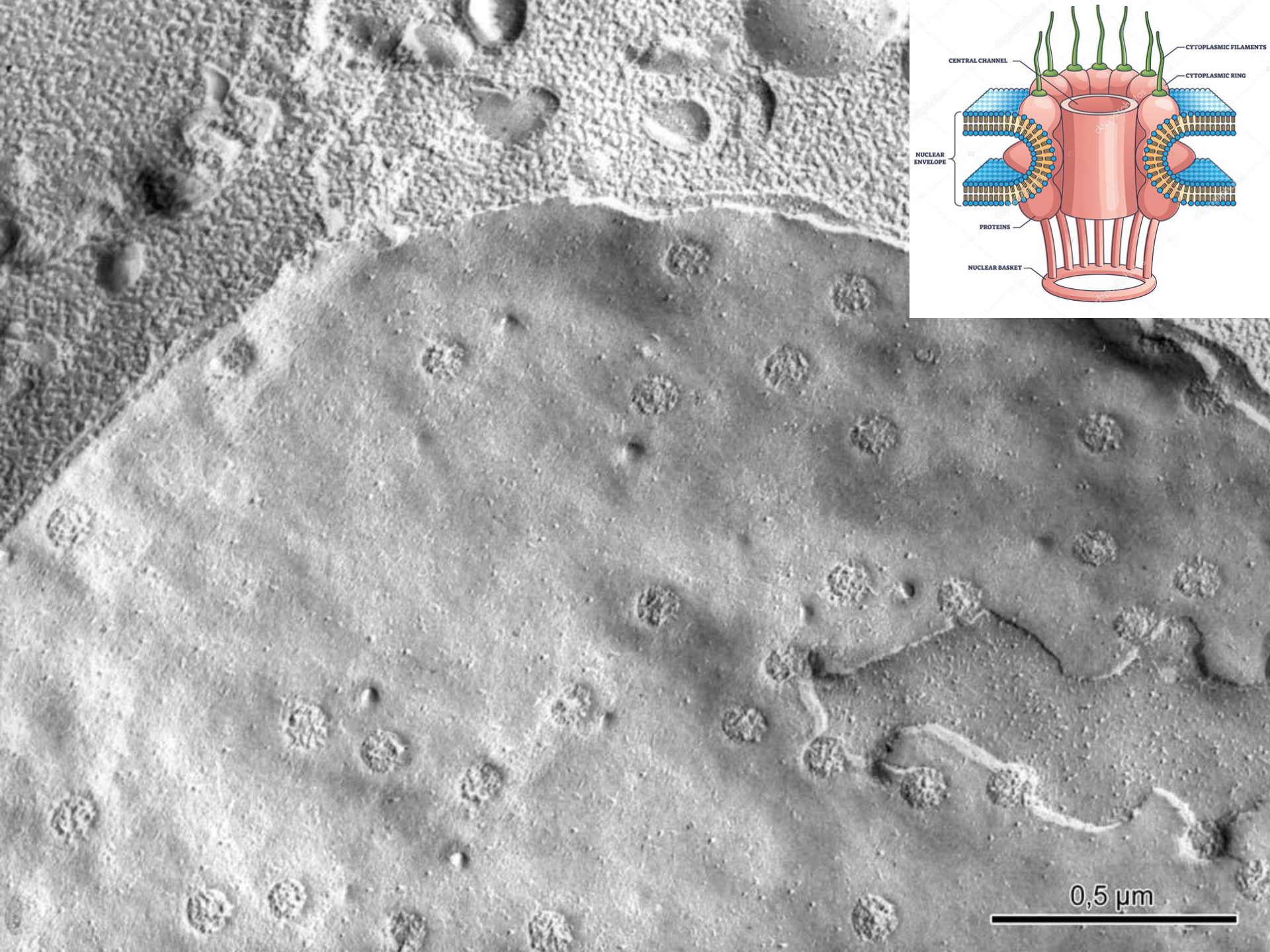
ATLAS OF CYTOLOGY AND EMBRYOLOGY



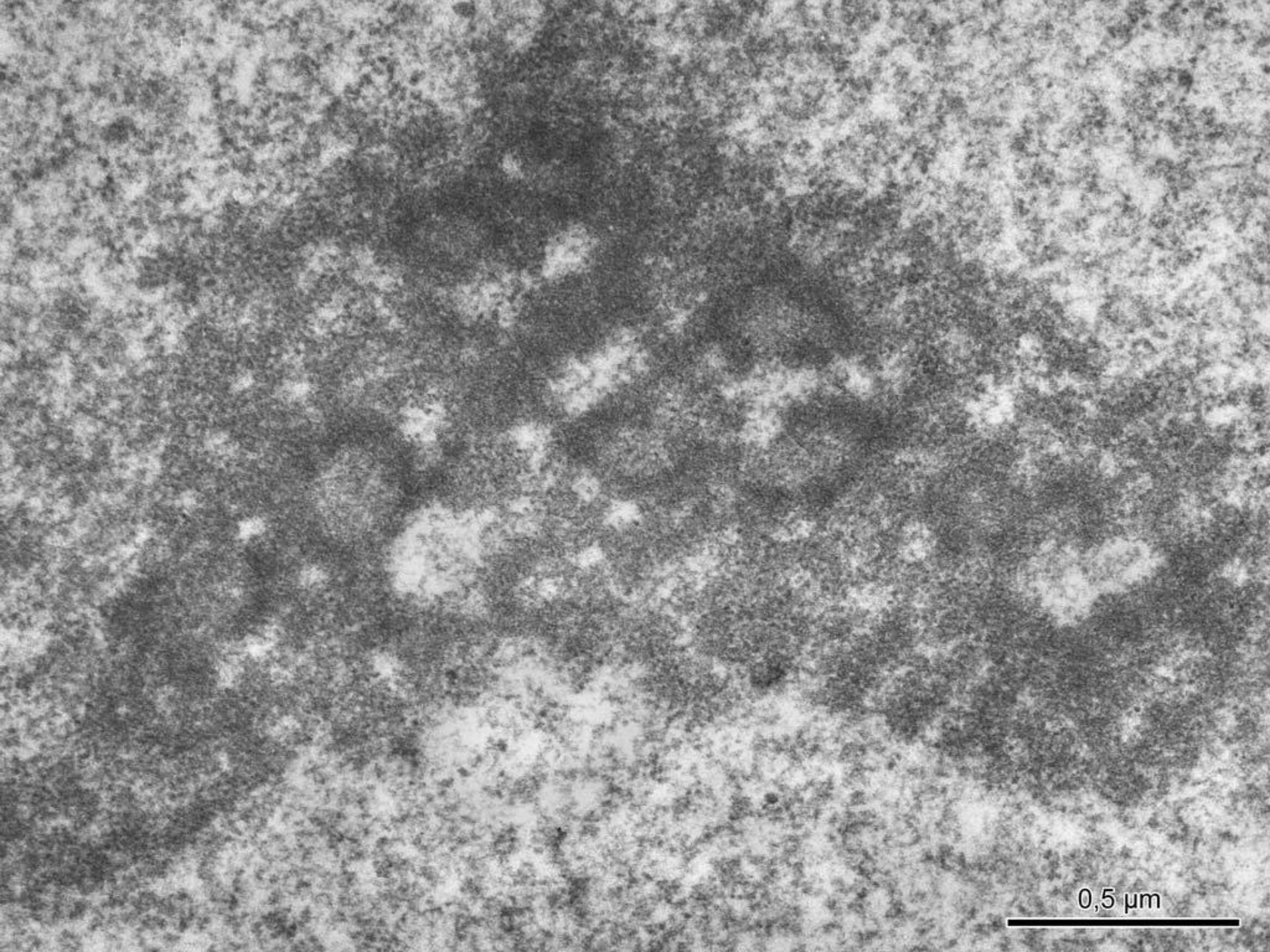
1 μm



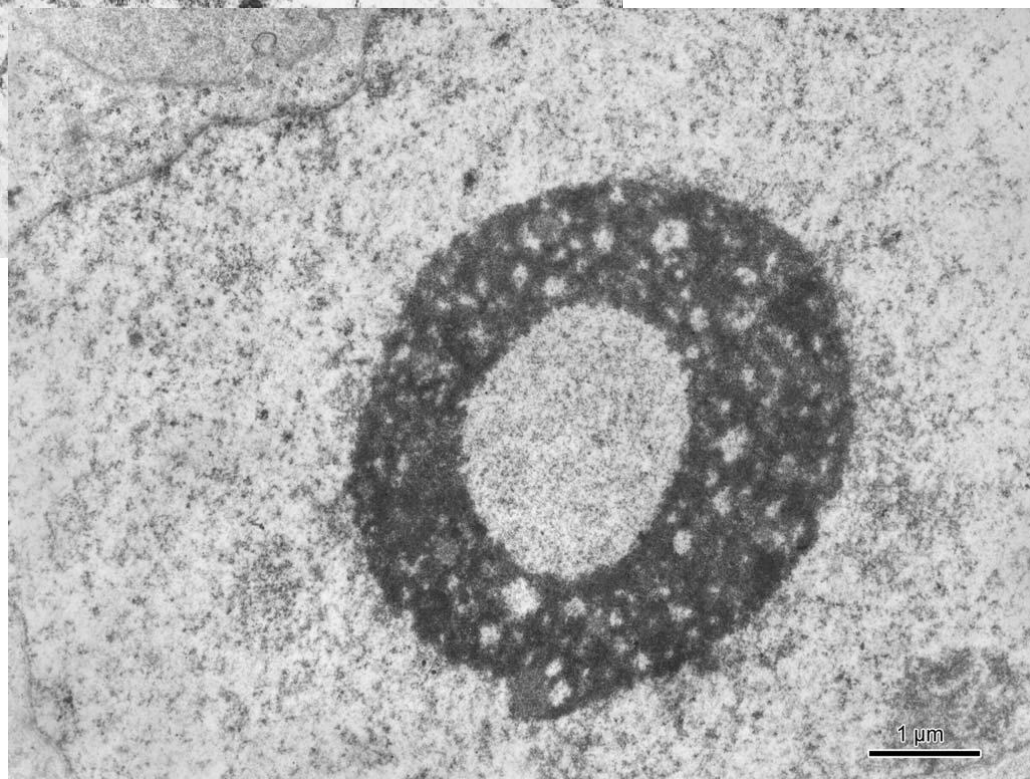
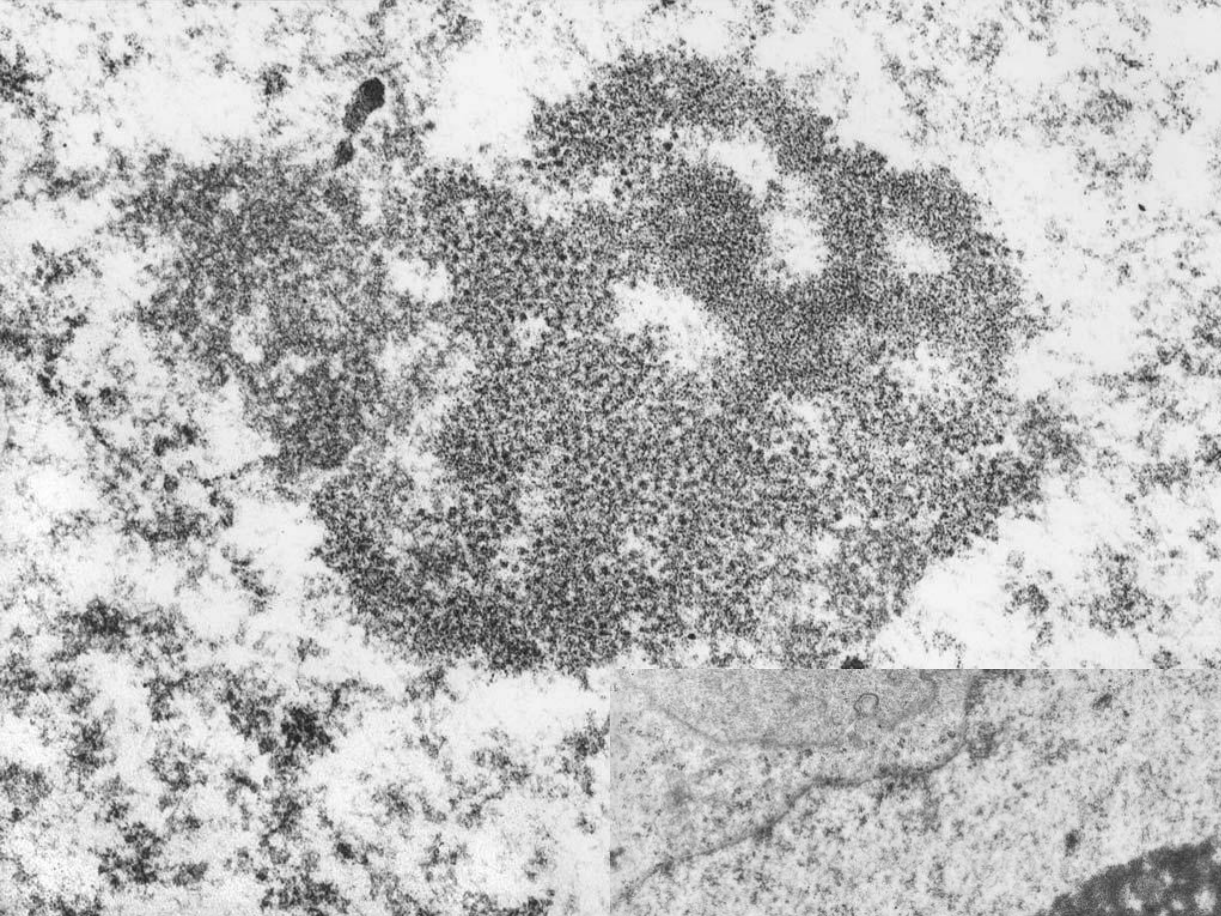
0,5 μm

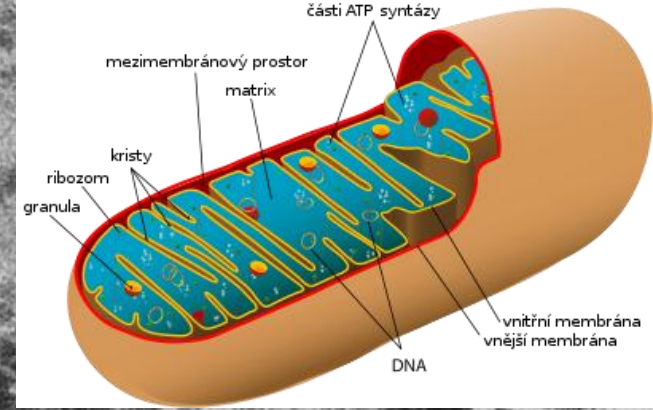
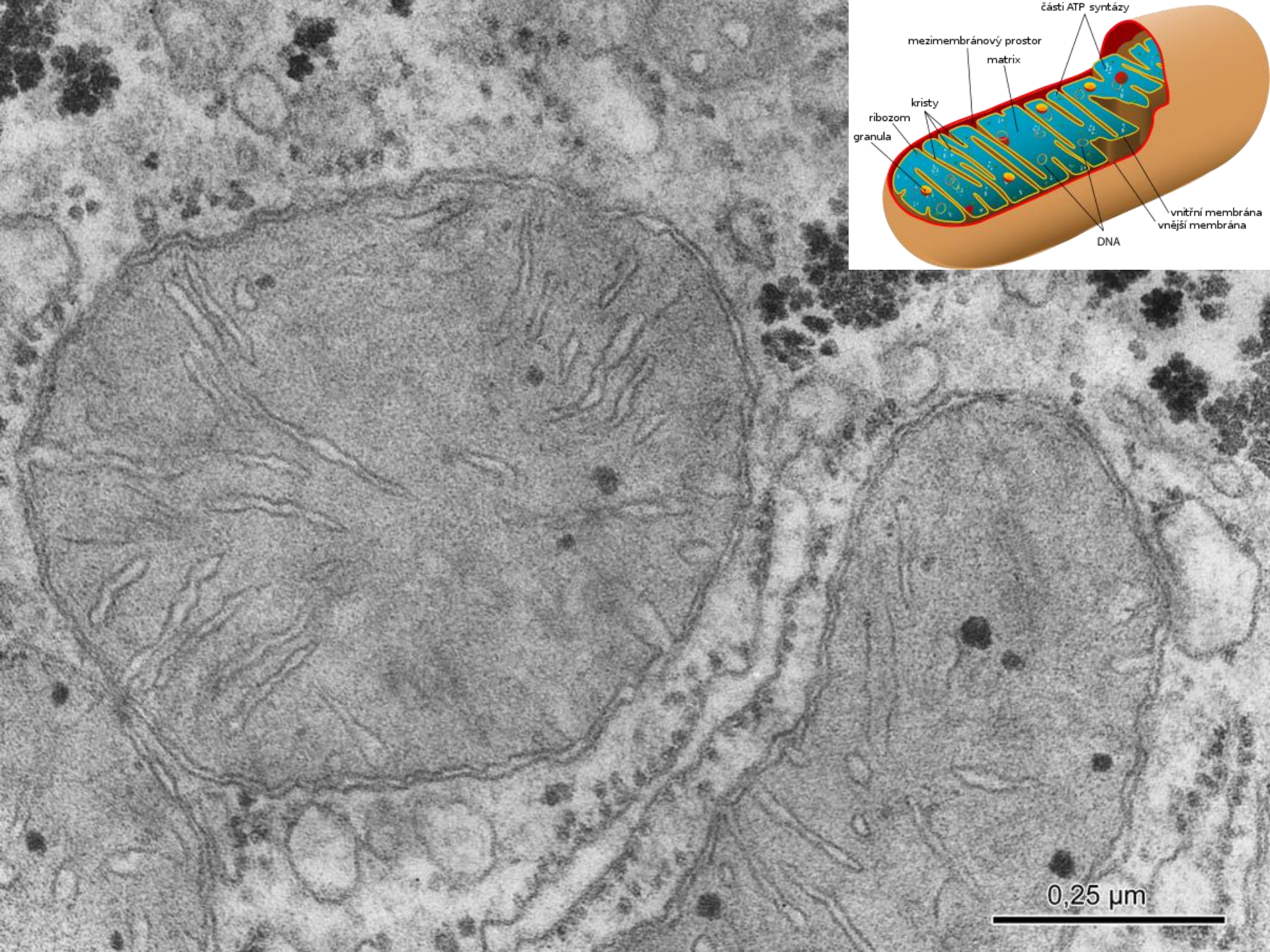


0,5 μm



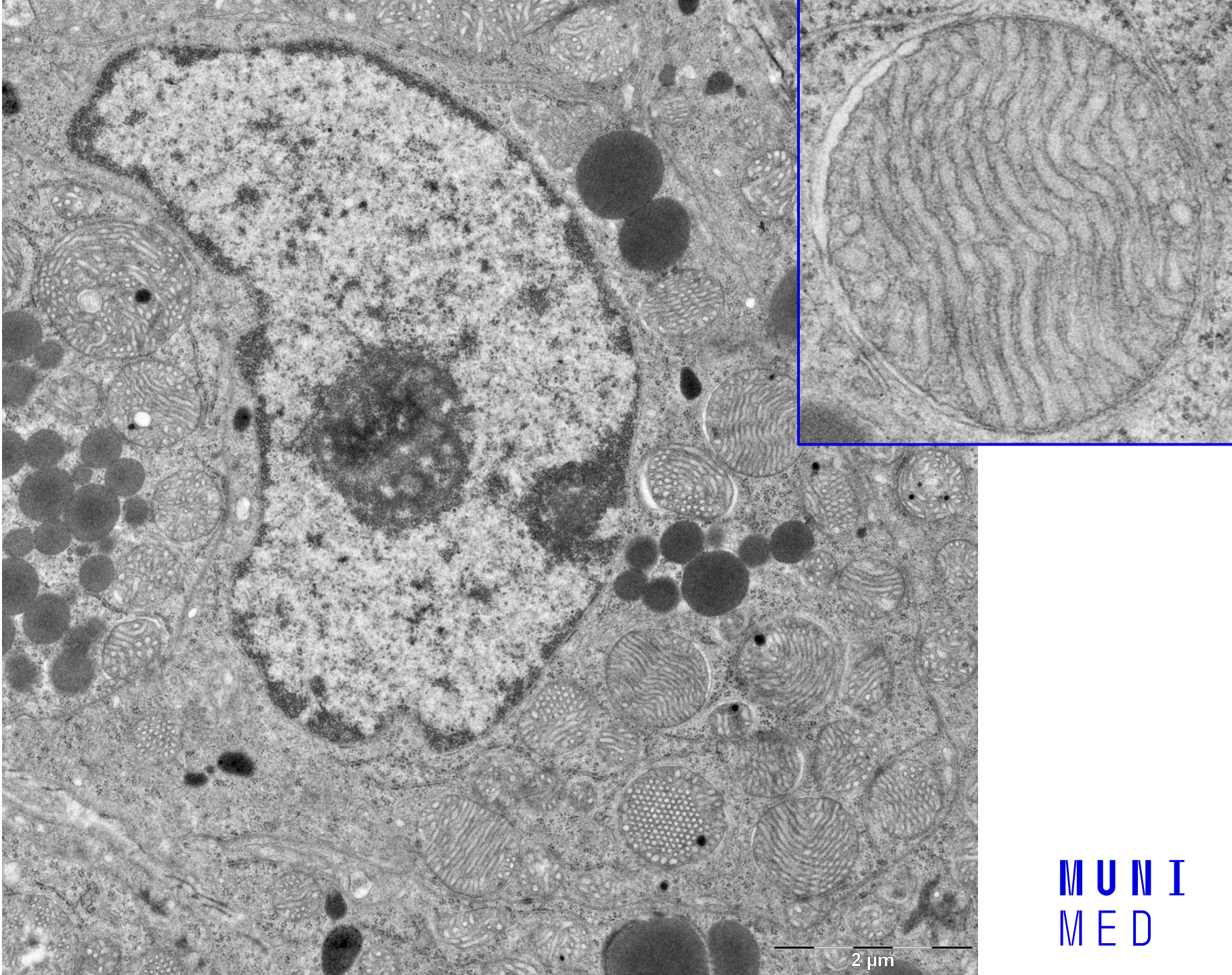
0,5 μm



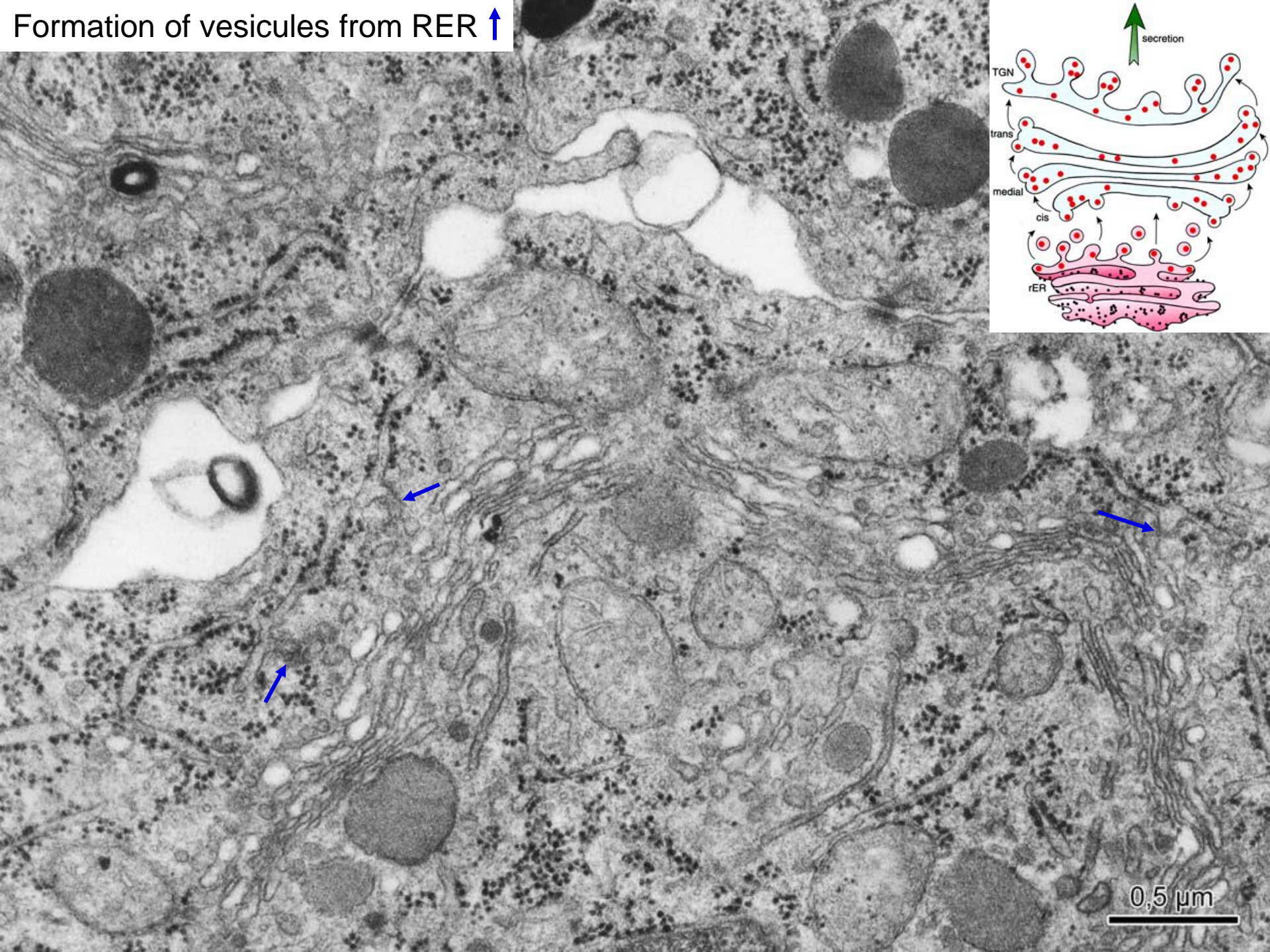


0,25 μ m

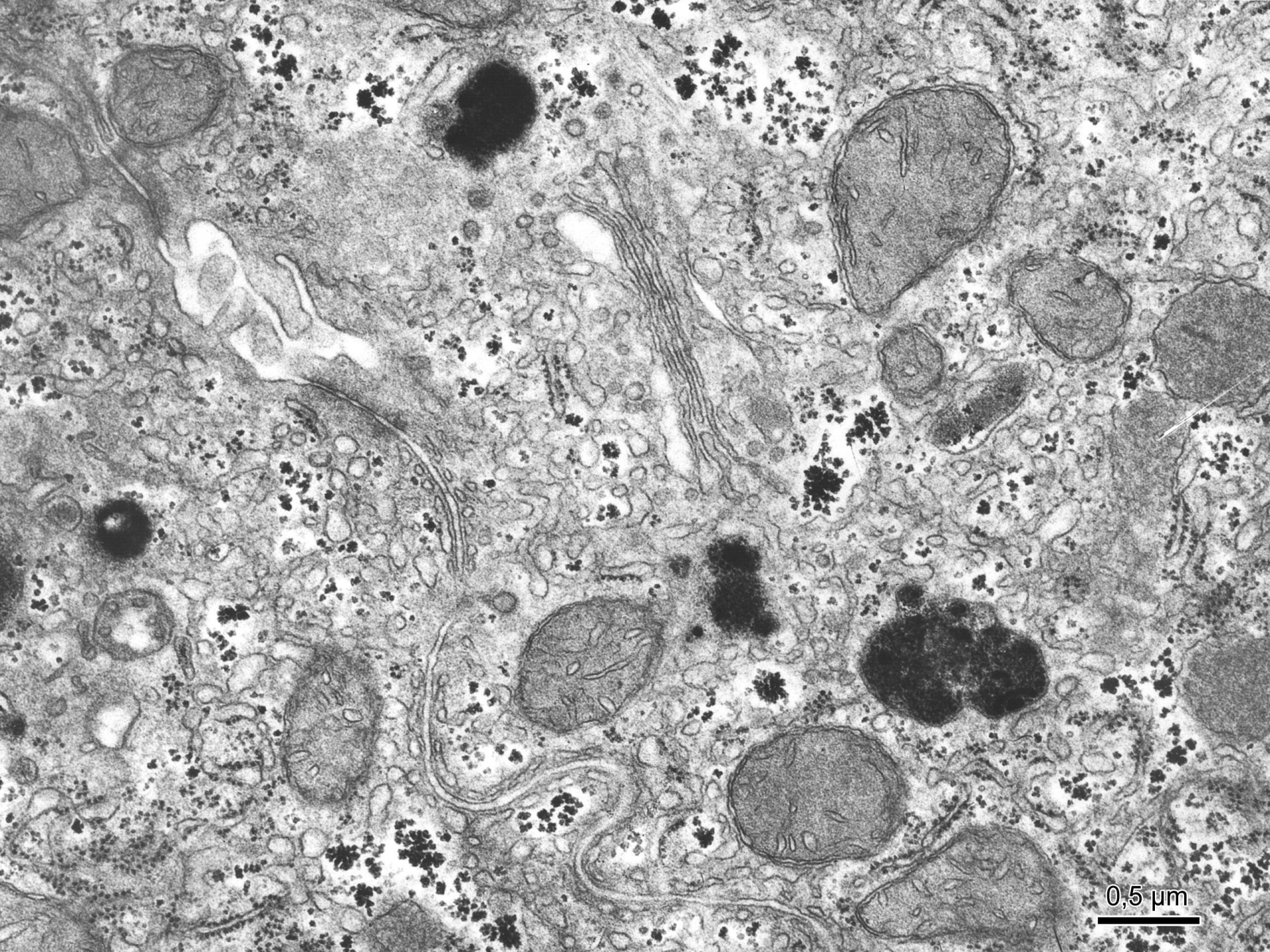




Formation of vesicles from RER ↑

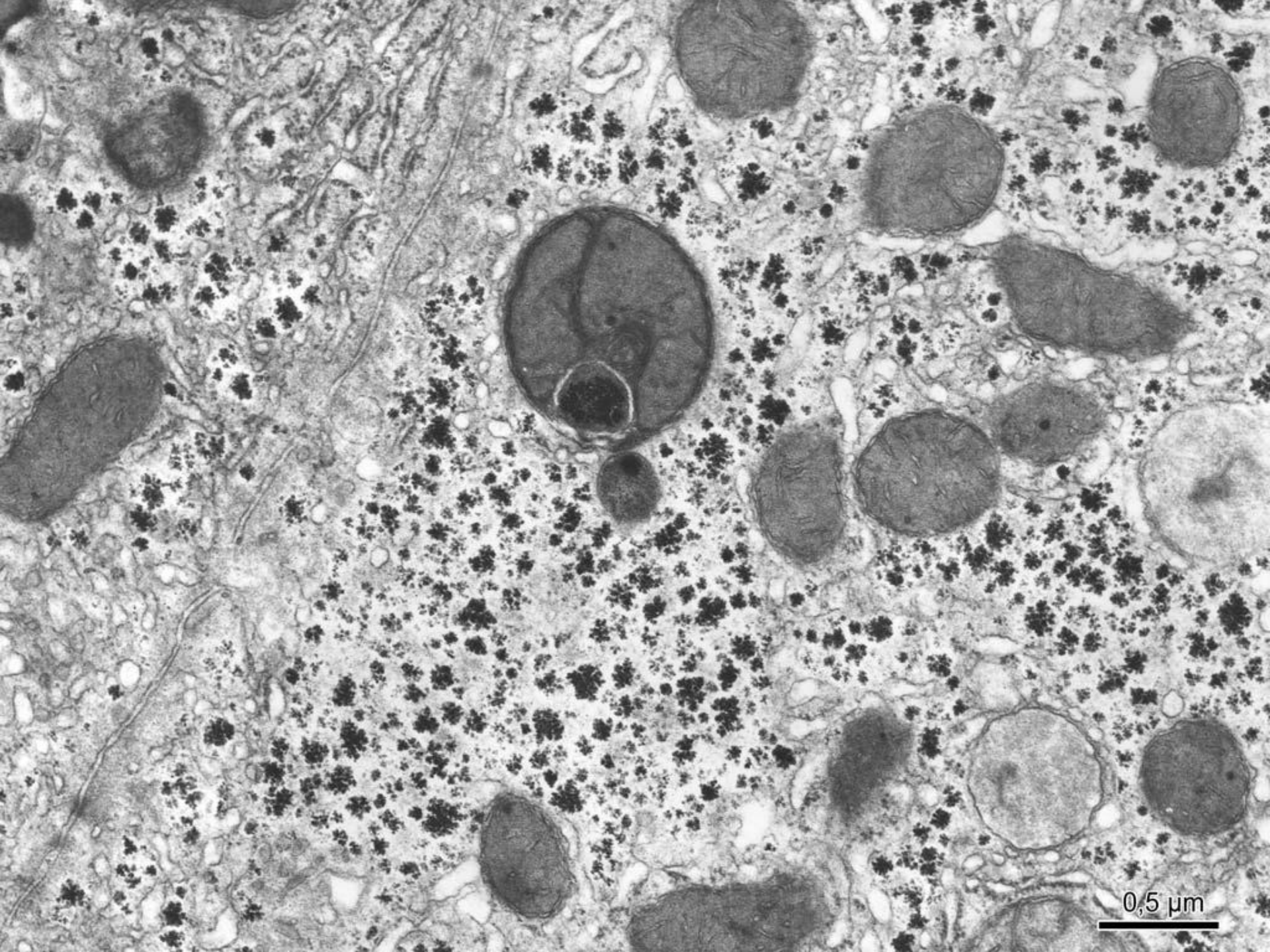


0.5 μm

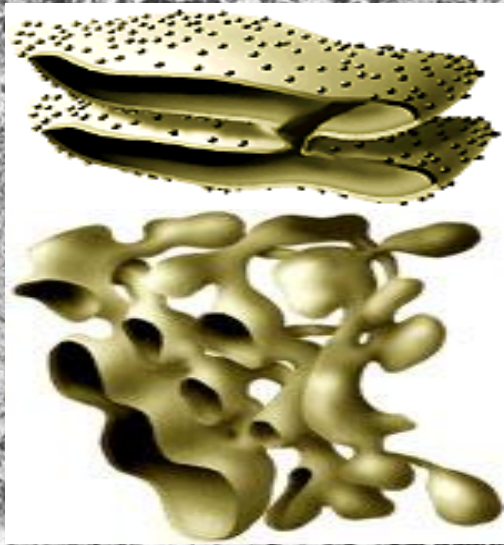
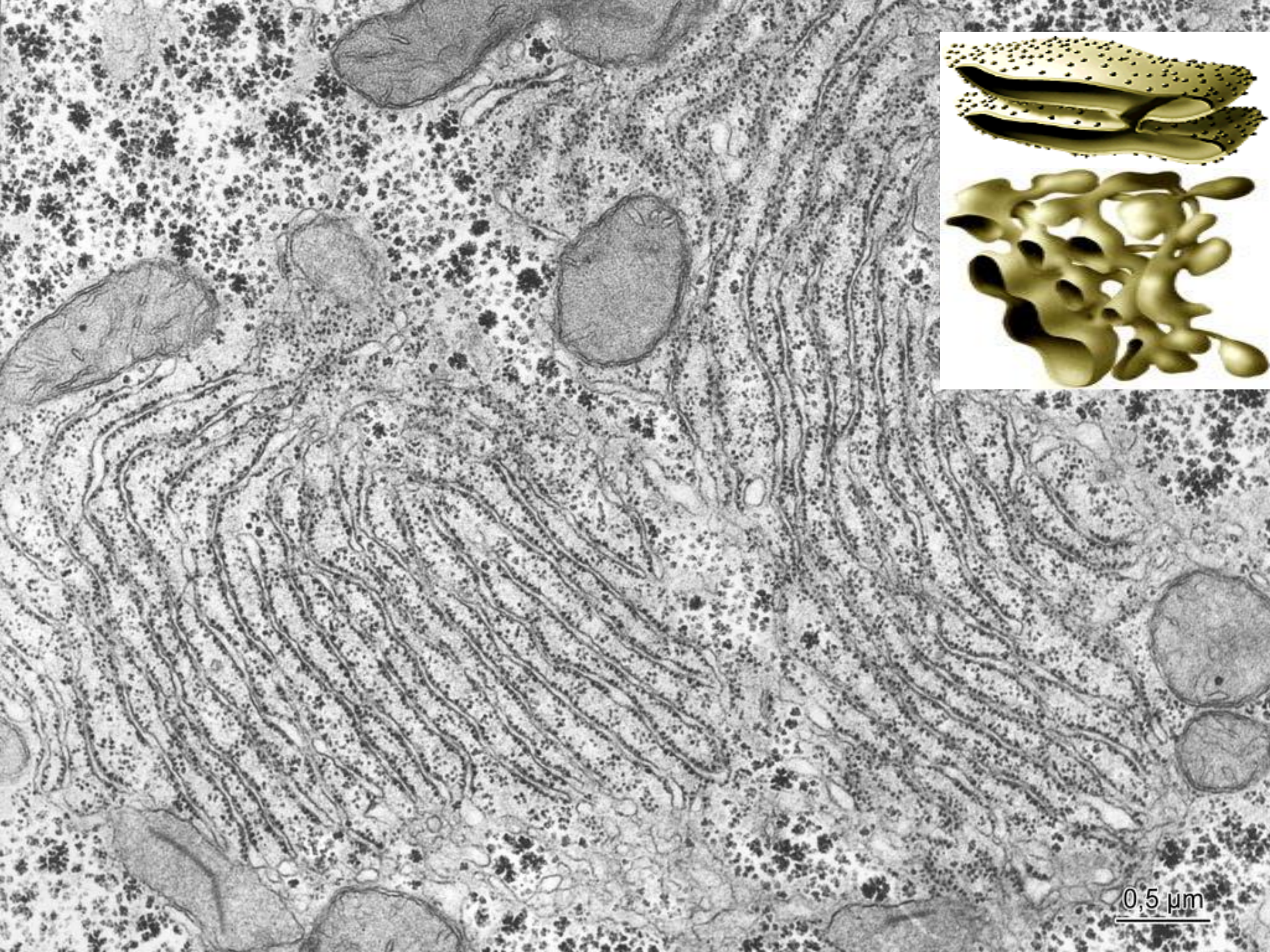


0,5 μm

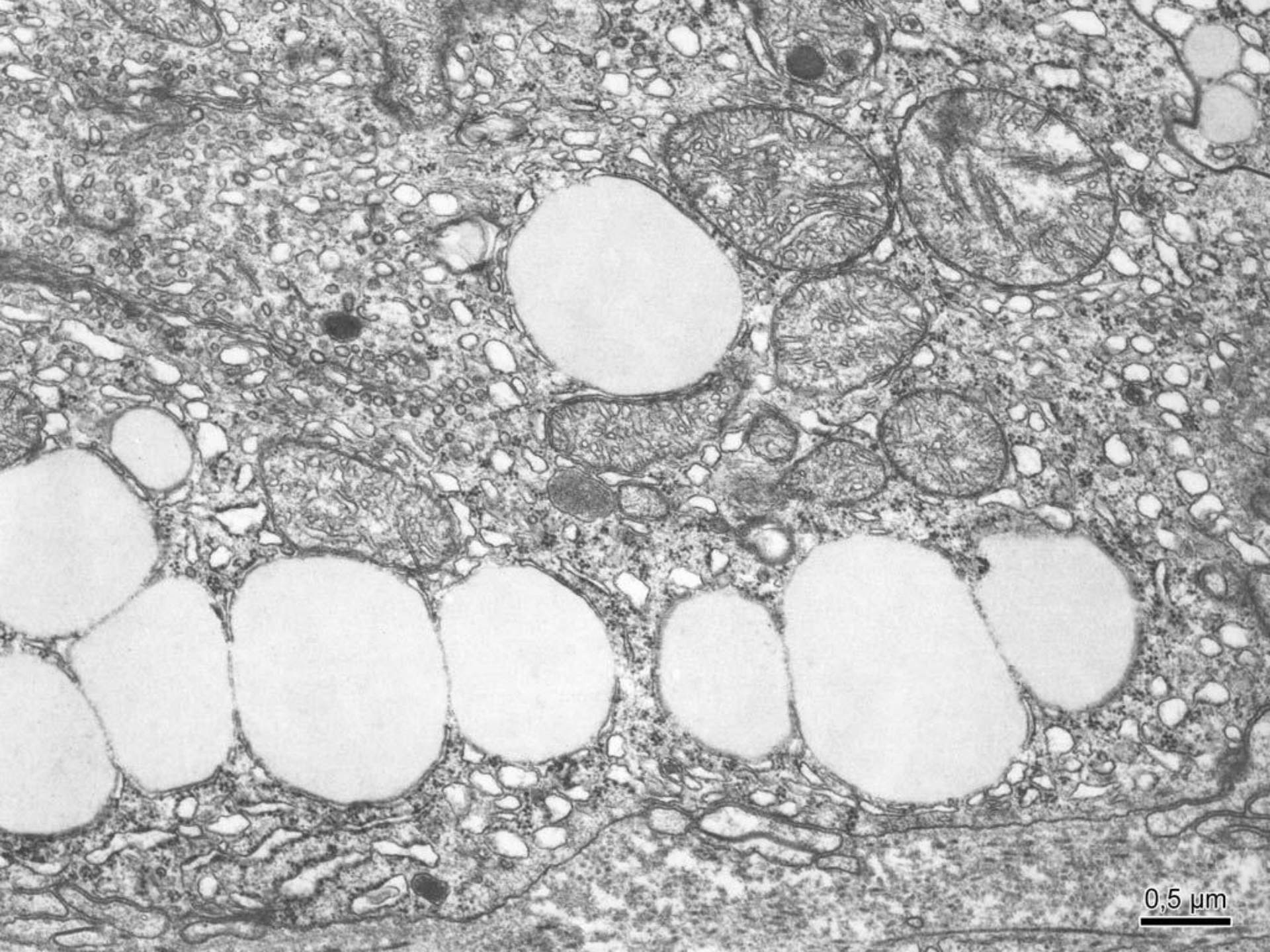




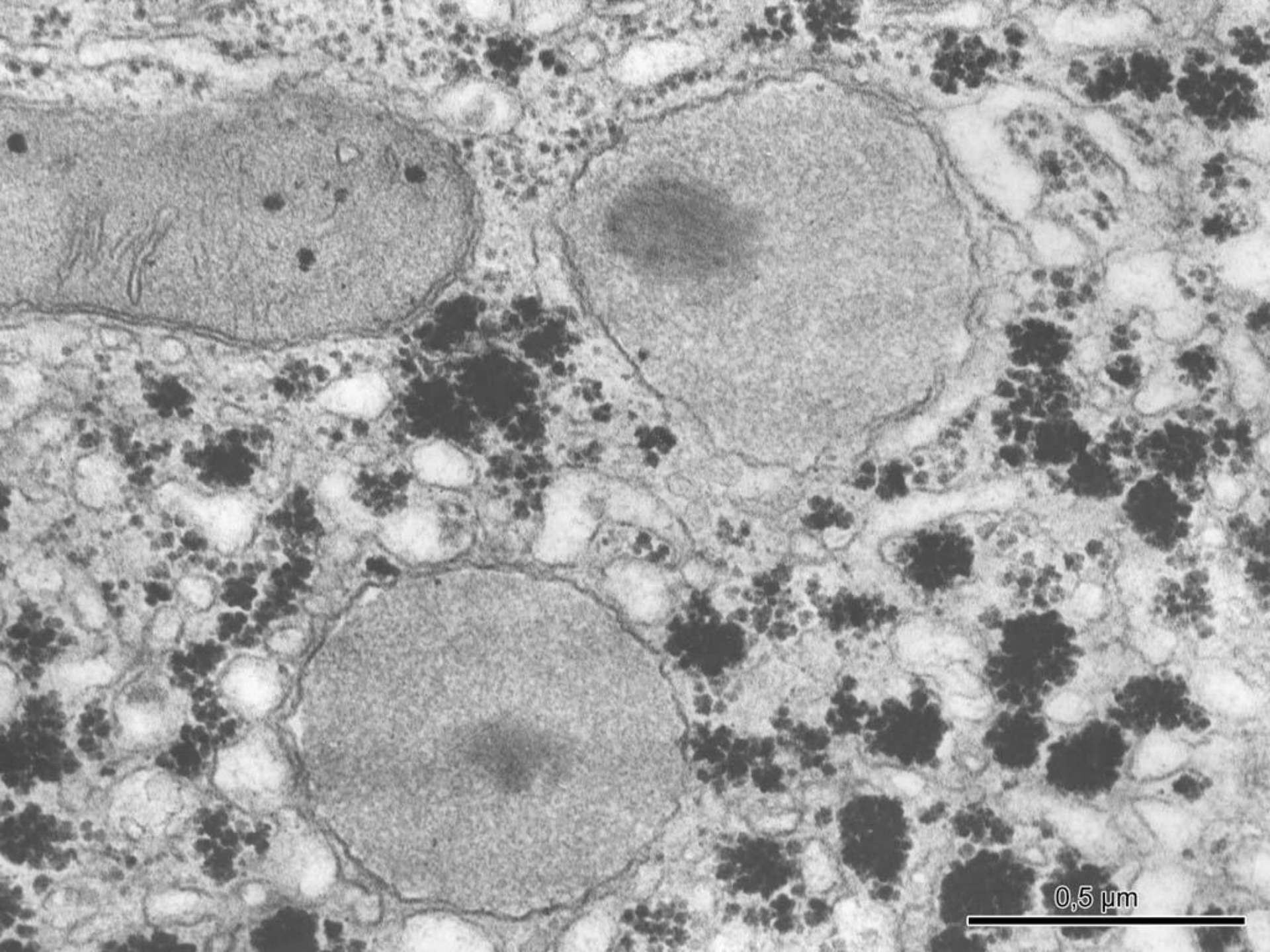
0,5 μm



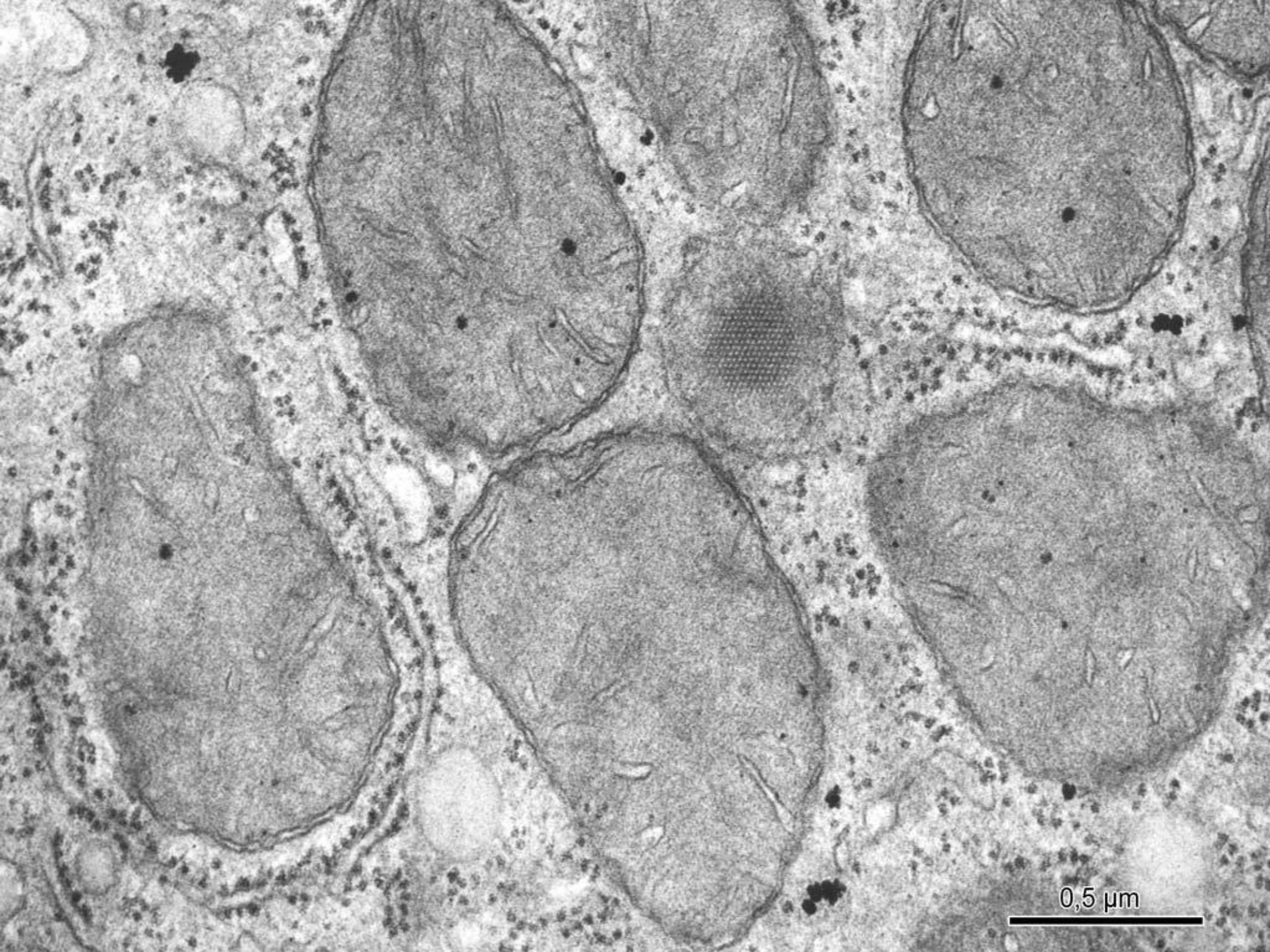
0,5 μm



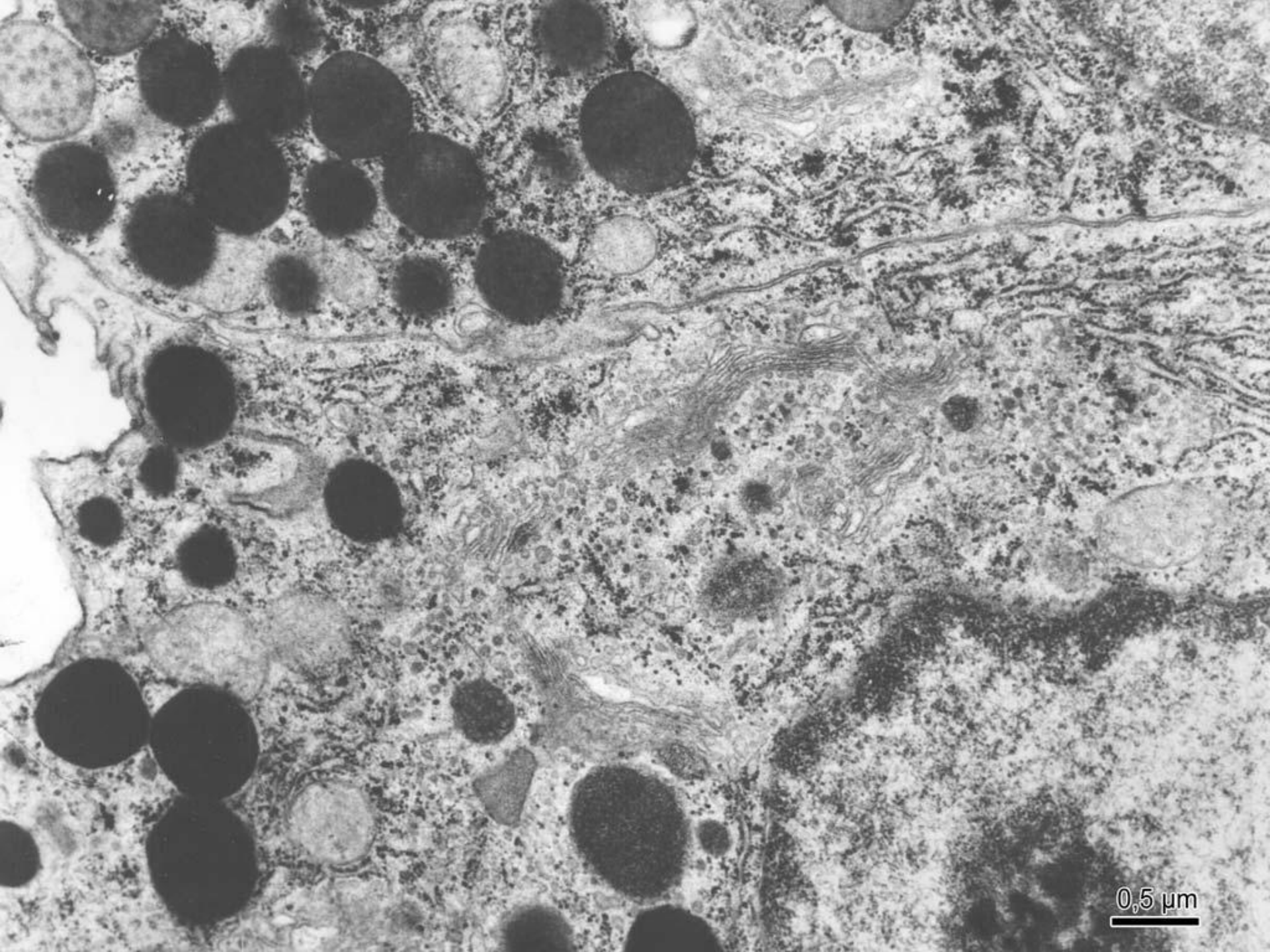
0,5 μm



0,5 μm



0,5 μm



0,5 μm

CYTOLOGY I

- nucleus
- nucleolus
- mitochondrion
- granular ER
- agranular ER
- Golgi apparatus
- lysosomes
- peroxisomes

MUNI MED Department of Histology and Embryology Protocol No.:

Protocol title:
UCO/Name:
Study program/year: Study group: Date:

List of slides (Box): List of electronograms (Atlas)

Number	Title of slide and used staining	Number	Title of <u>electronogram</u>
.....
.....
.....
.....
.....
.....
.....
.....
.....
.....
.....

Guidelines for protocol preparation

1. Protocol shall complement theoretical knowledge with real microscopic observations. As such it contains color diagrams of histological slides, or black and white diagrams of electronograms of EM atlas, and if applicable, also answers to theoretical questions.

Atlas: pages 1-14

Web:

https://is.muni.cz/do/rect/el/estud/lf/js18/histologie_atlas/

web/atlas_OH_en.html?chapter=0

