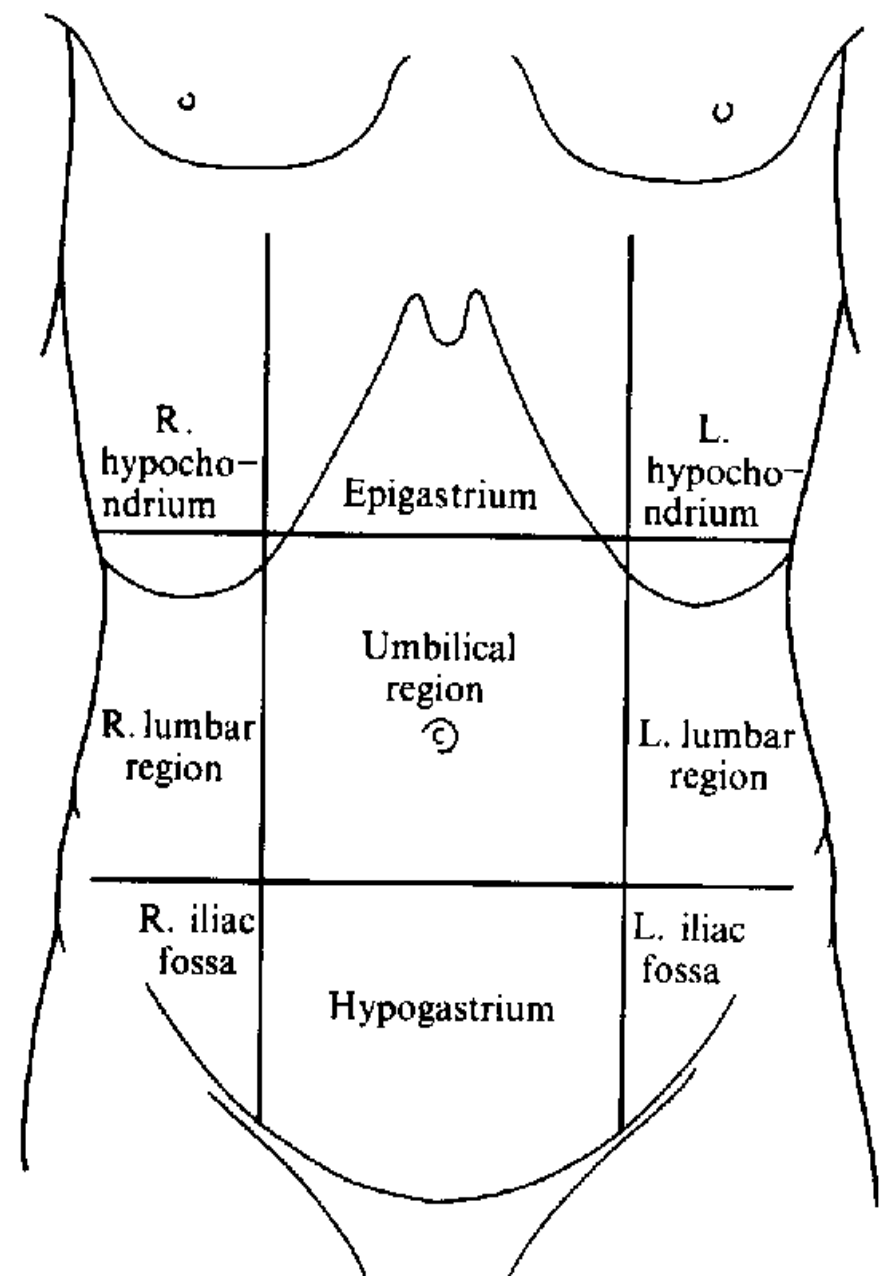
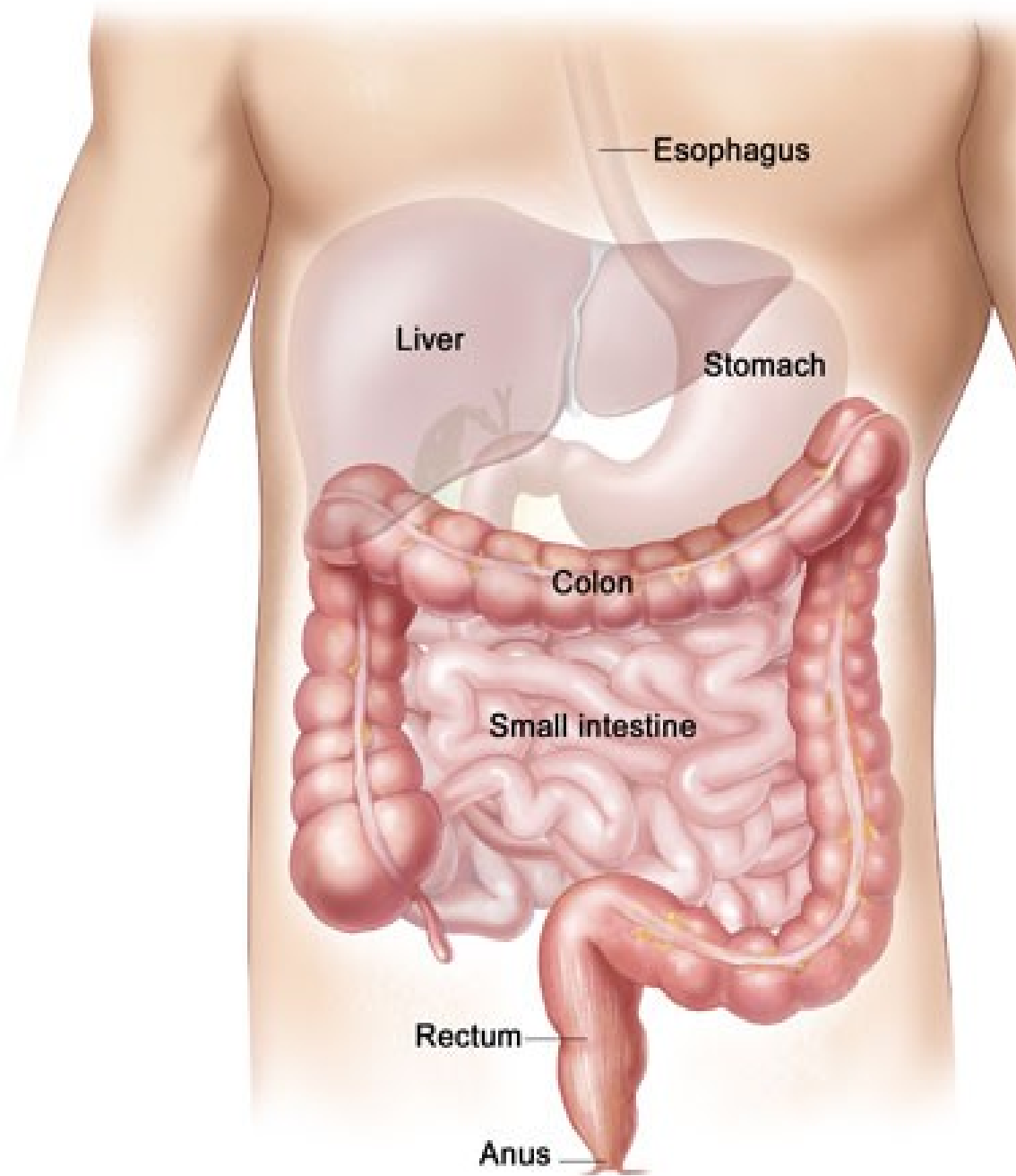


Střeva

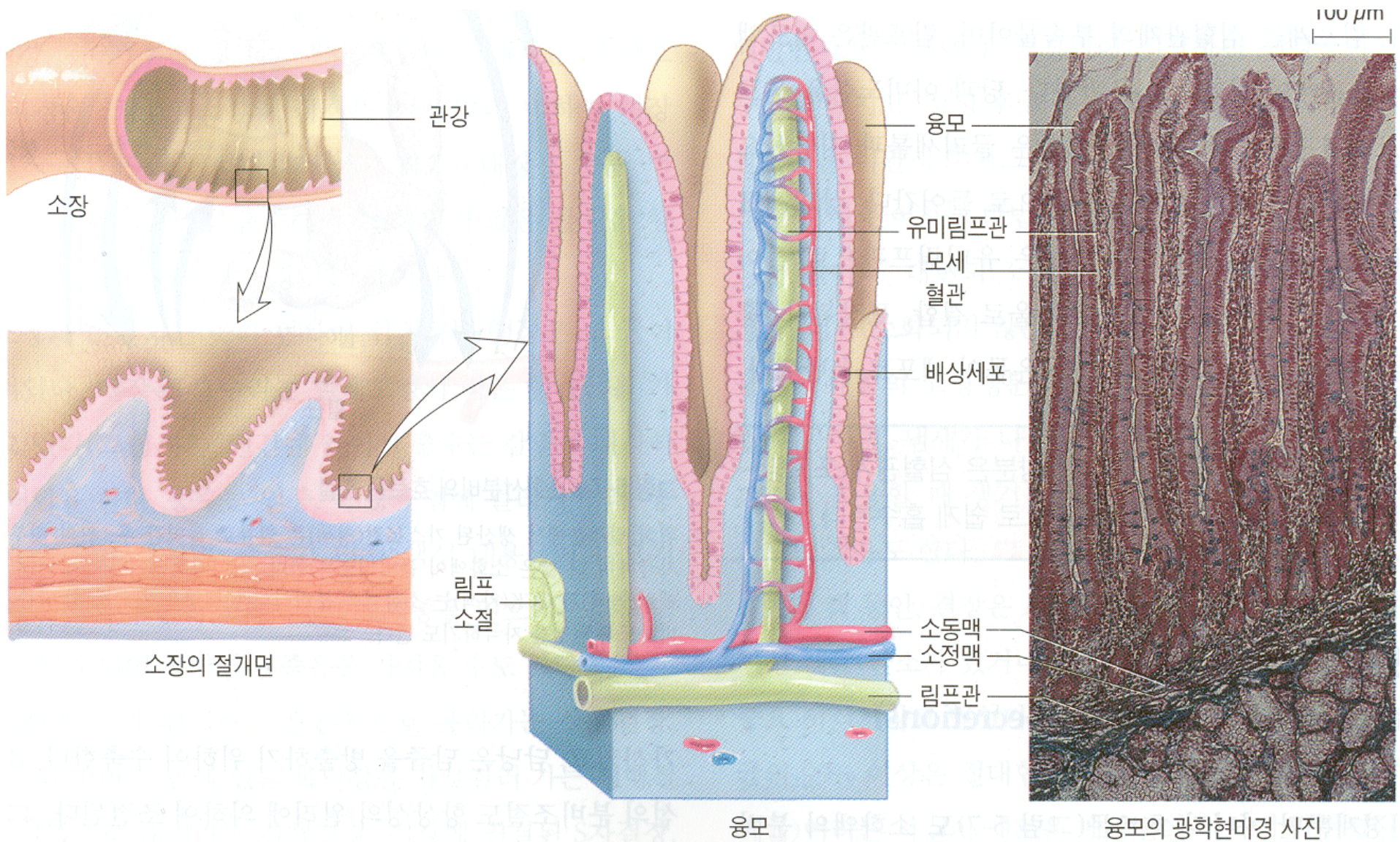
- tenké – duodenum
 - jejunum
 - ileum
- tlusté – caecum (+ appendix vermiformis)
 - colon ascendens
 - transversum
 - descendens
 - sigmoideum
- rectum

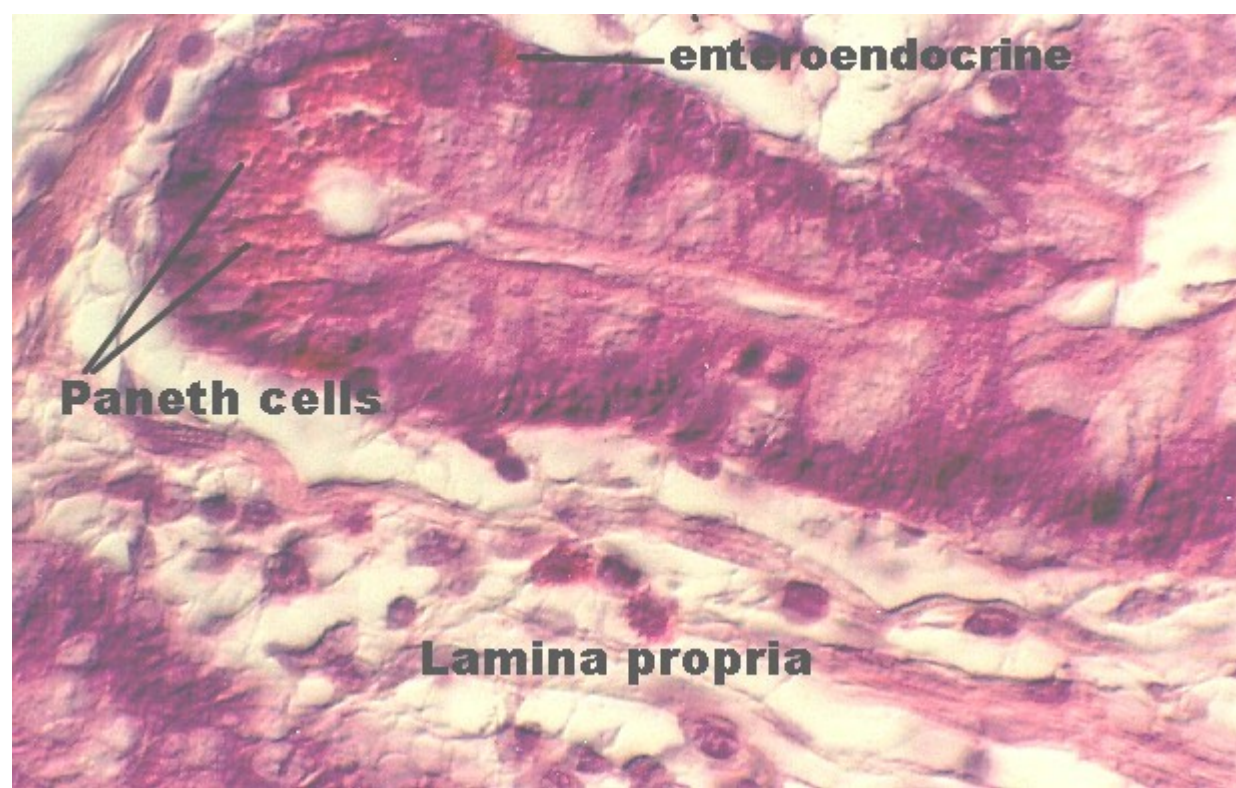
canalis analis (vývojově nikoli střevo)



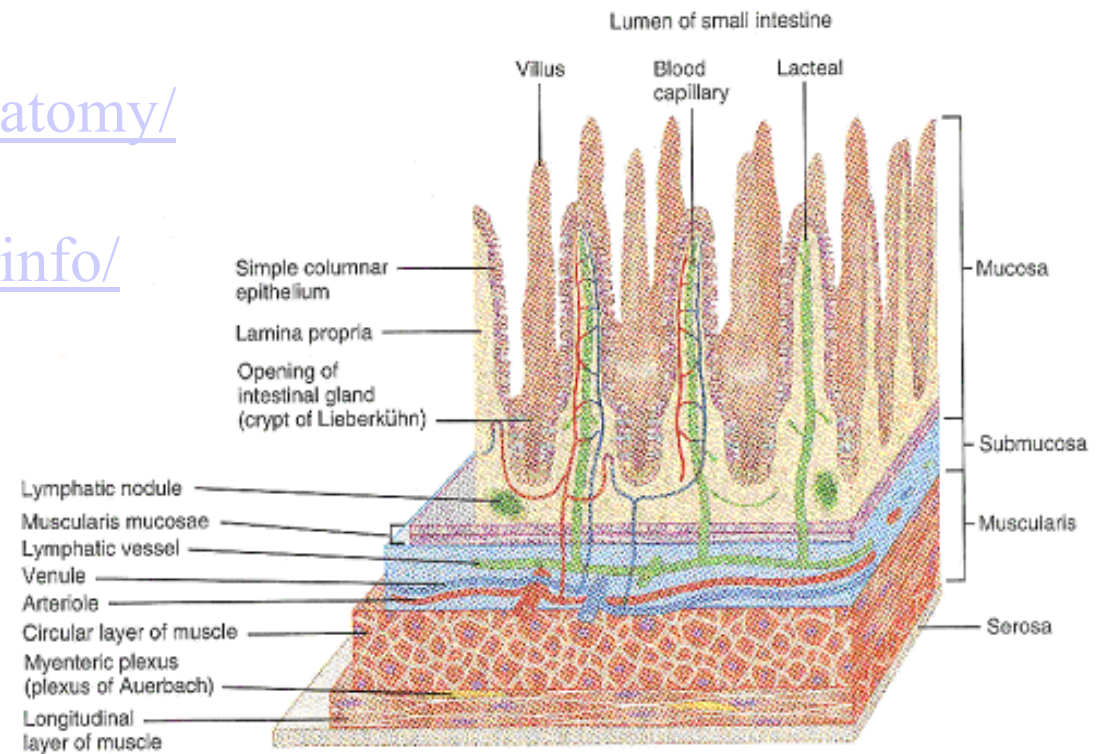
<http://www.arthursclipart.com/medical/digesbw.htm>

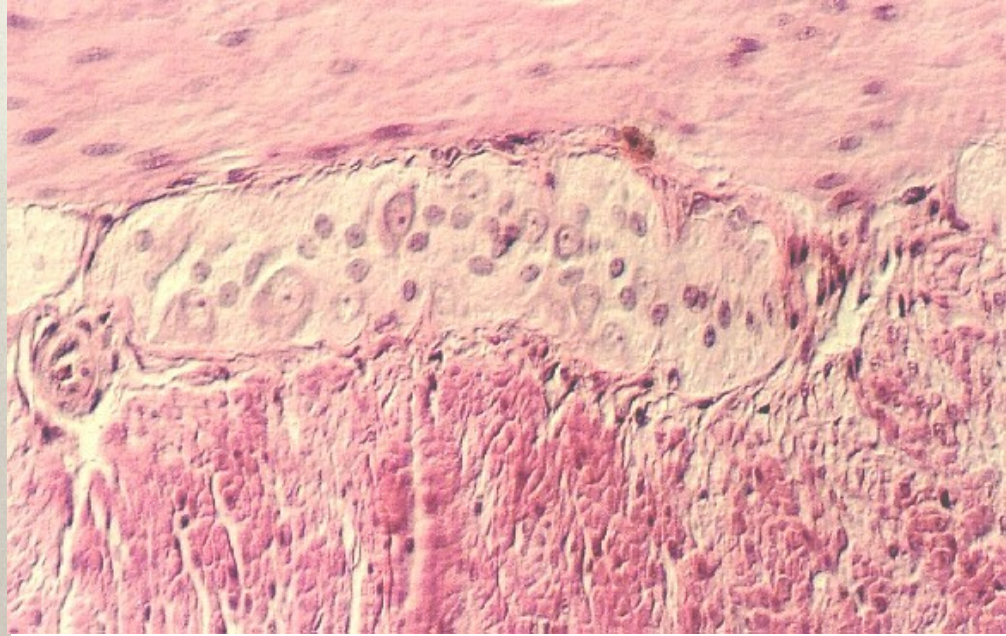
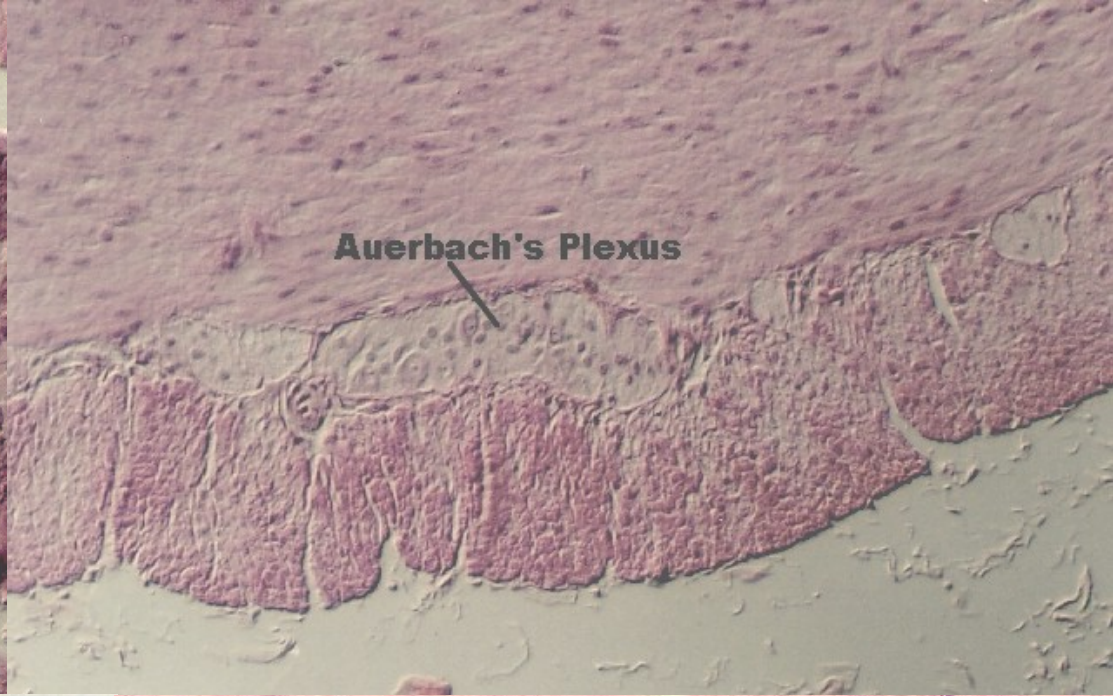
health.yahoo.com/topic/digestive/treatment/article/healthwise/ncicdr0000350260



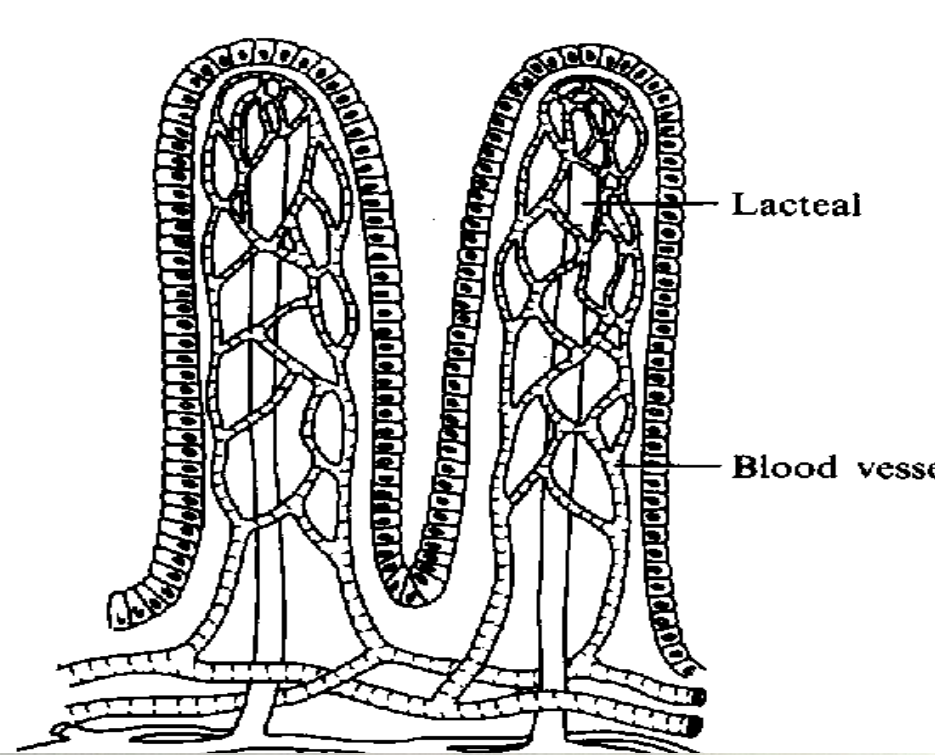


<http://cellbio.utmb.edu/microanatomy/digestive/Intestine.htm>
http://www.rivm.nl/interspeciesinfo/intra/human/int_small/



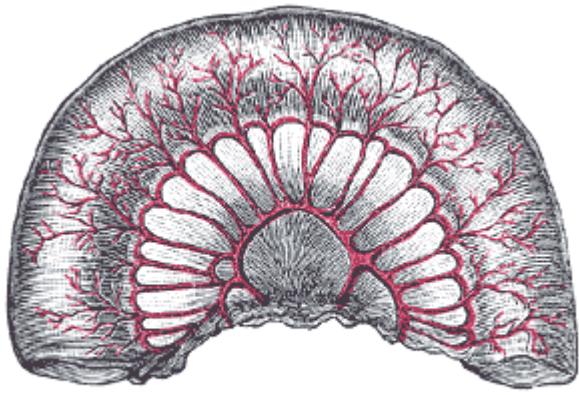


<http://cellbio.utmb.edu/microanatomy/digestive/Intestine.htm>

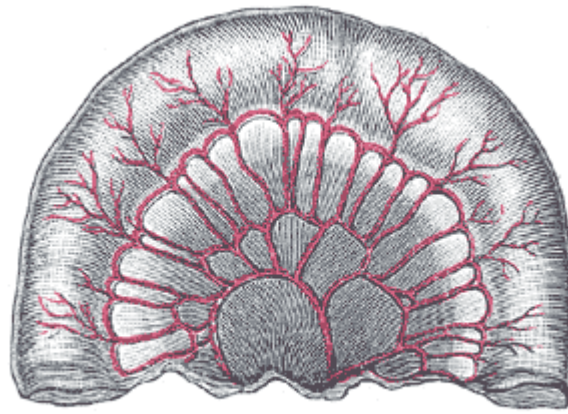


<http://cellbio.utmb.edu/micro-anatomy/digestive/Intestine.htm>
<http://www.arthursclipart.com/medical/digesbw.htm>

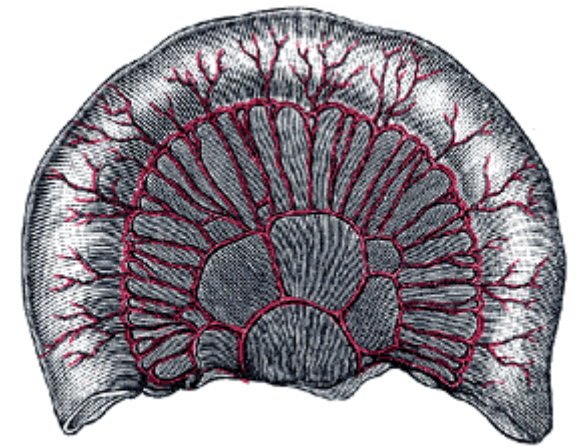




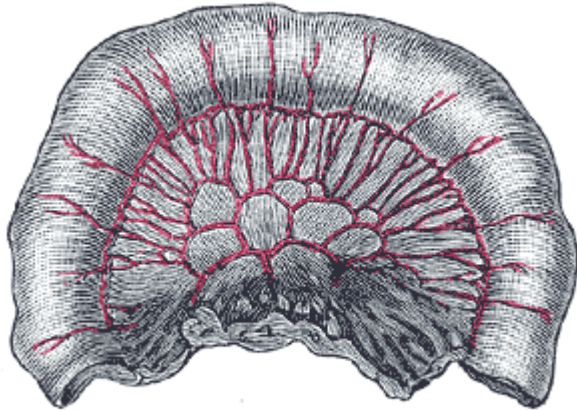
Three feet.



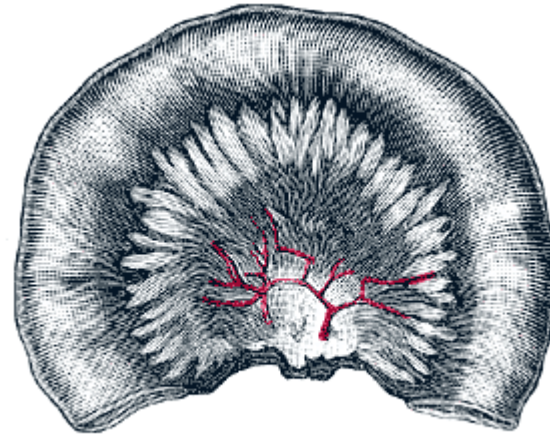
Six feet.



Nine feet.

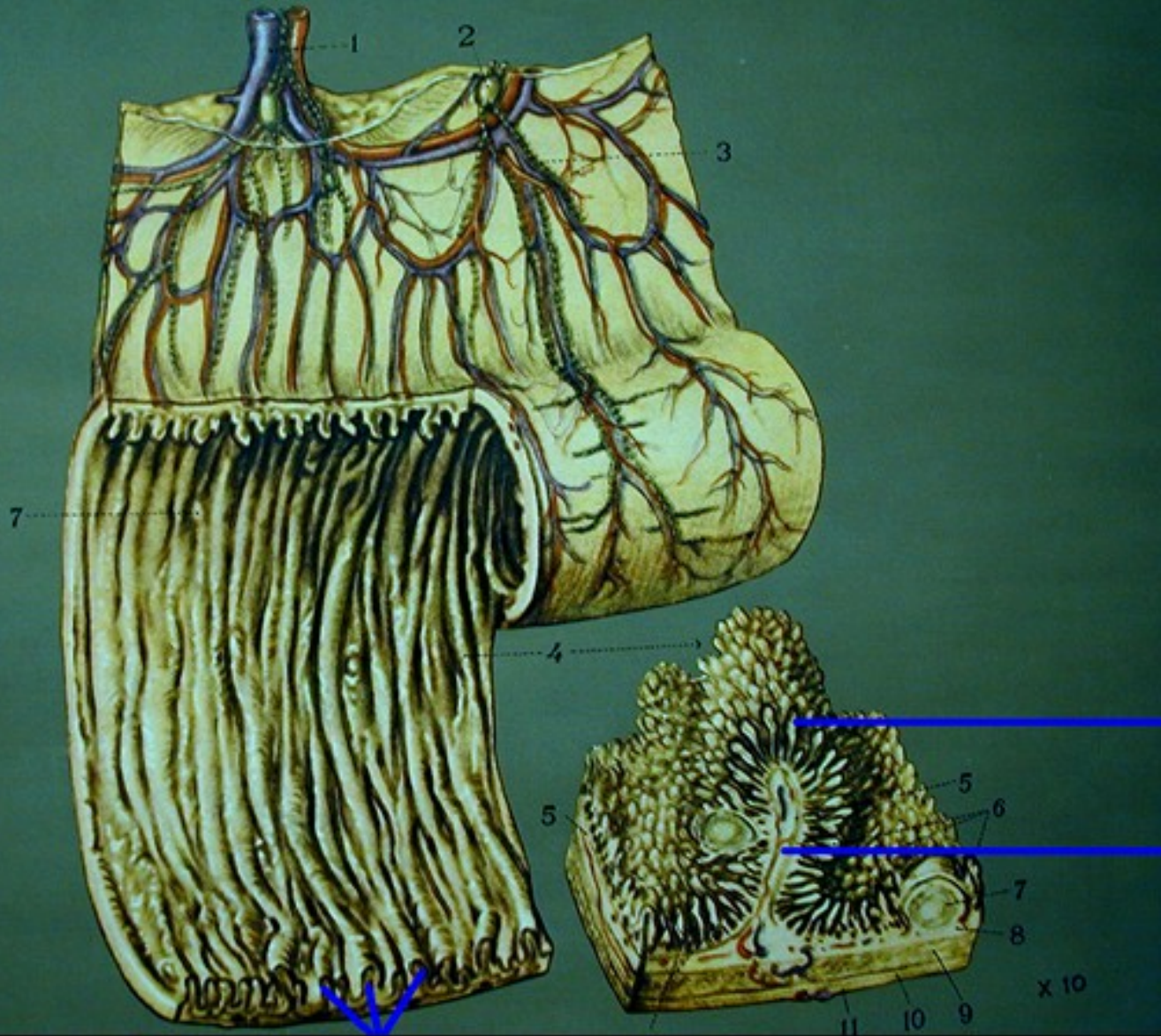


Twelve feet.



Twenty feet.

1065-1070

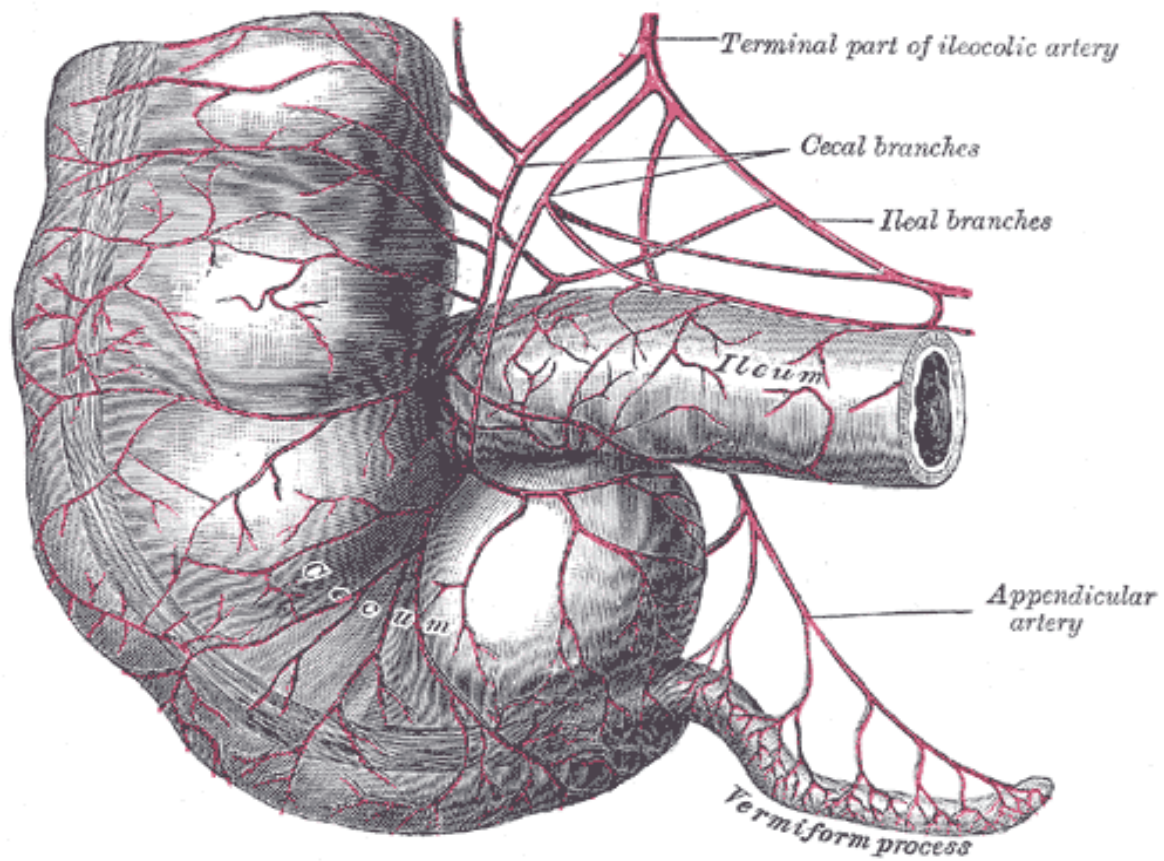
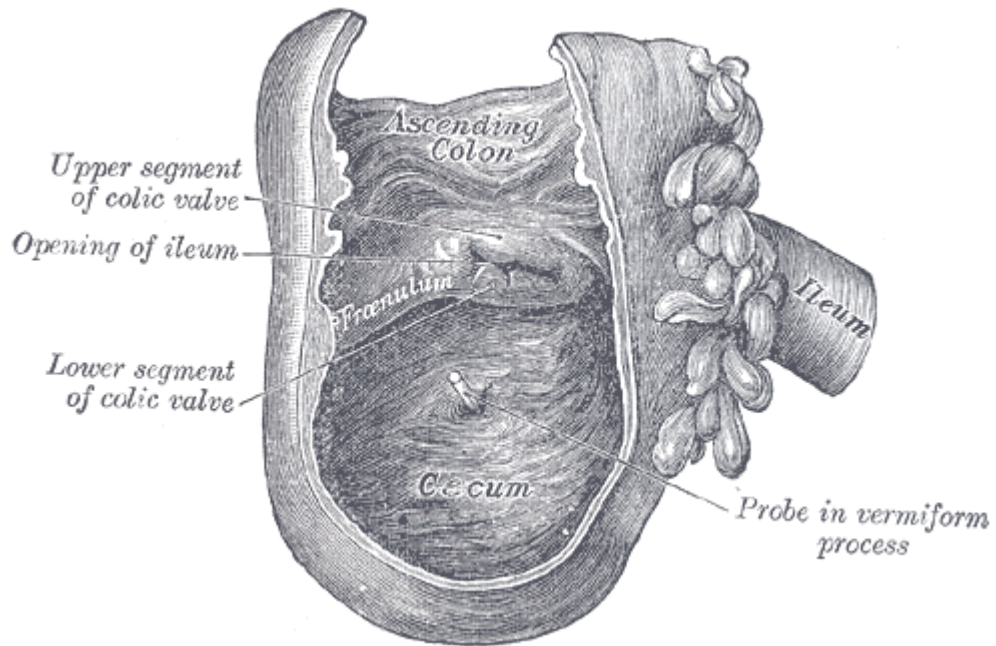


Villus

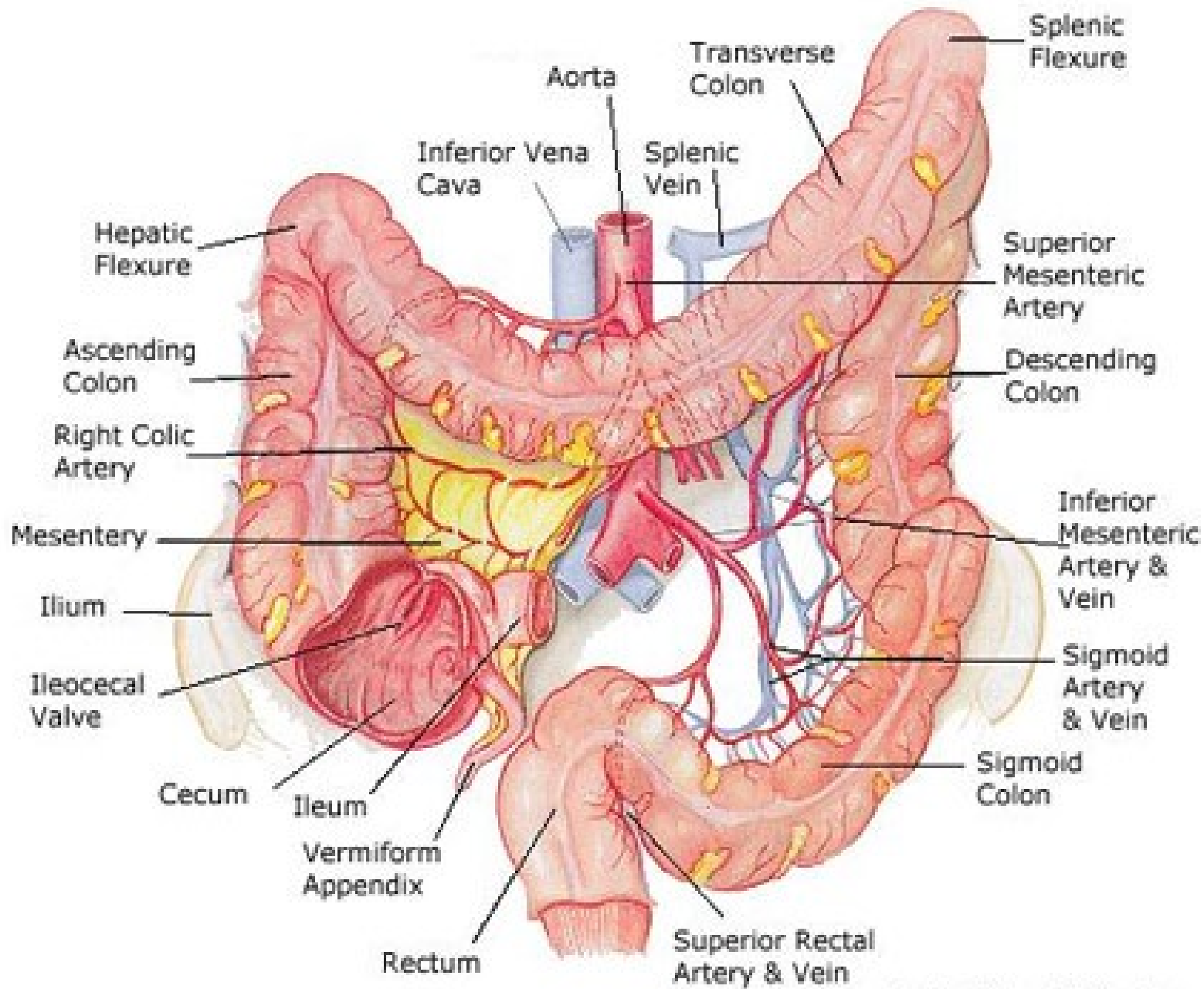
Circular Fold

Circular Folds

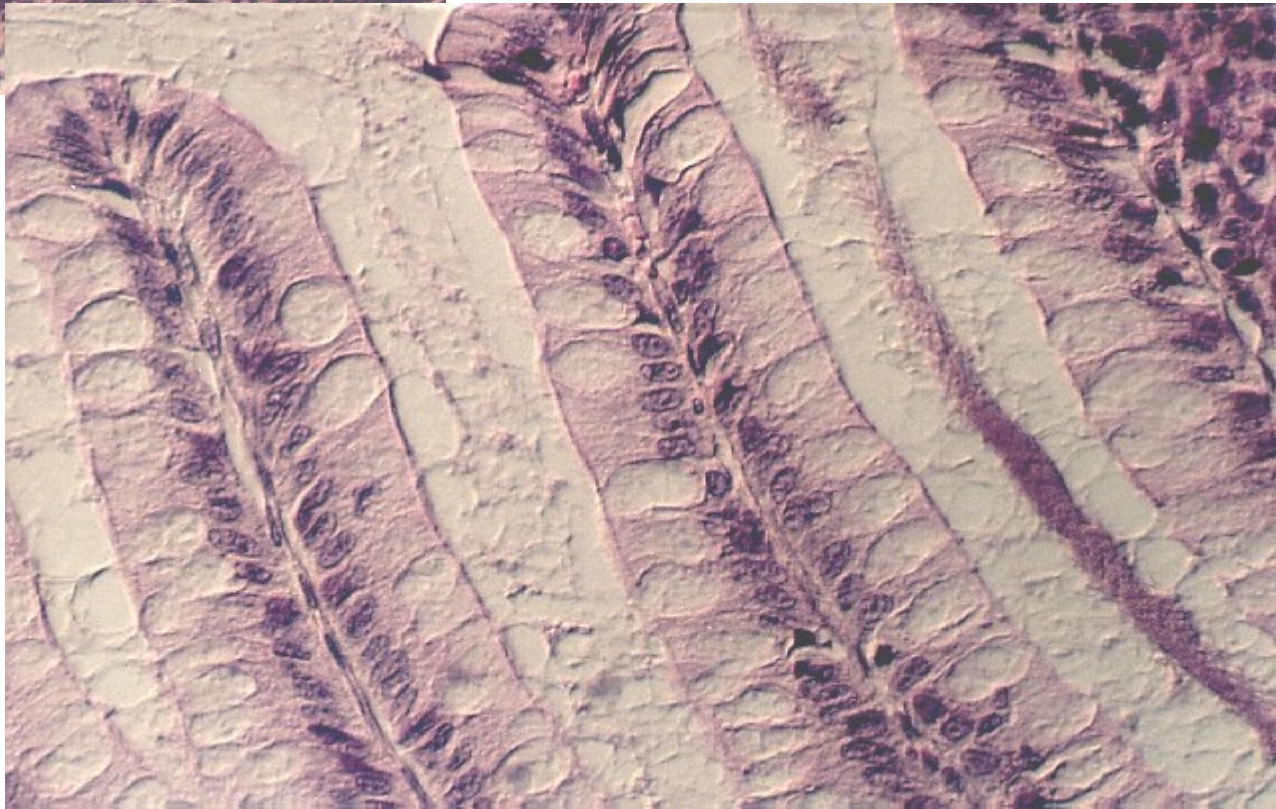
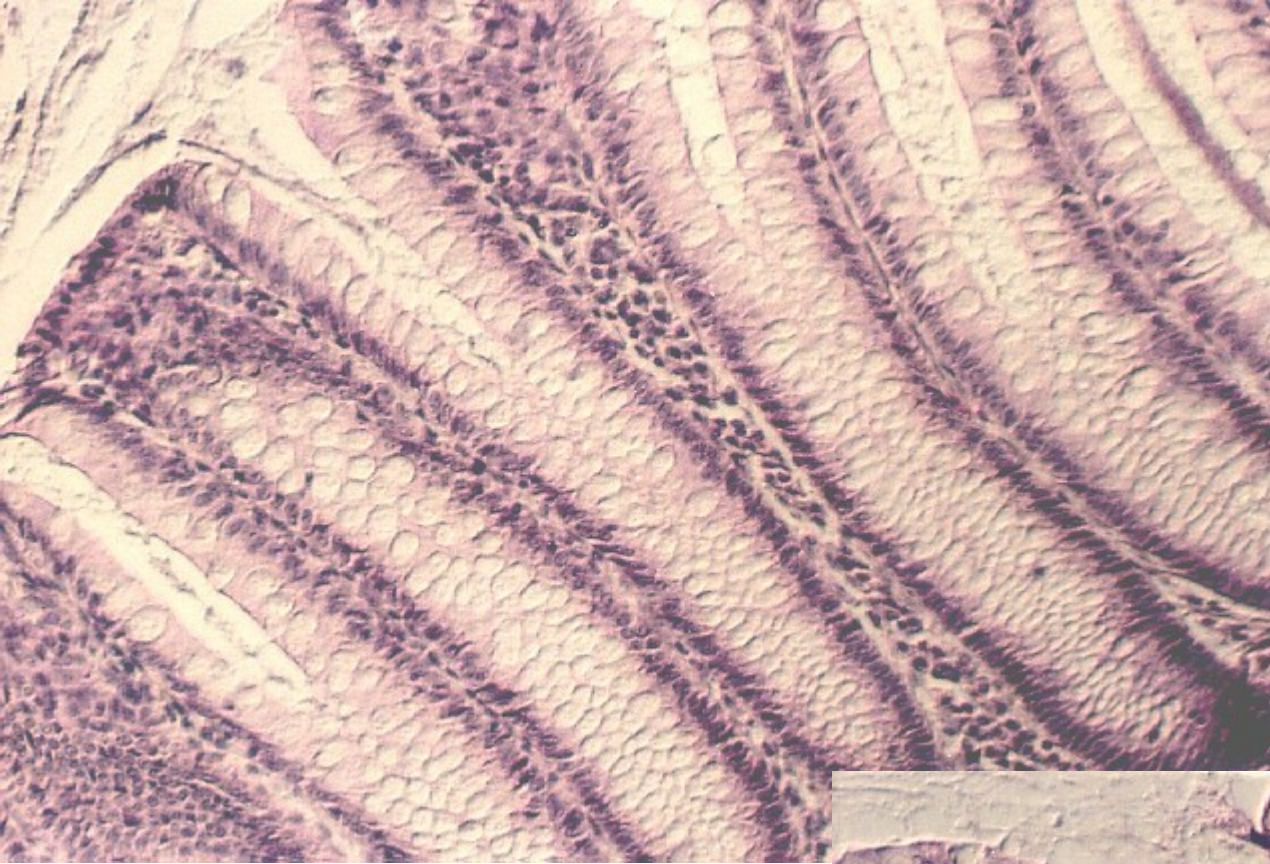
[http://kcfac.kilgore.cc.tx.us/kcap2/digestive chart small intestine structures sized.jpg](http://kcfac.kilgore.cc.tx.us/kcap2/digestive%20chart%20small%20intestine%20structures%20sized.jpg)



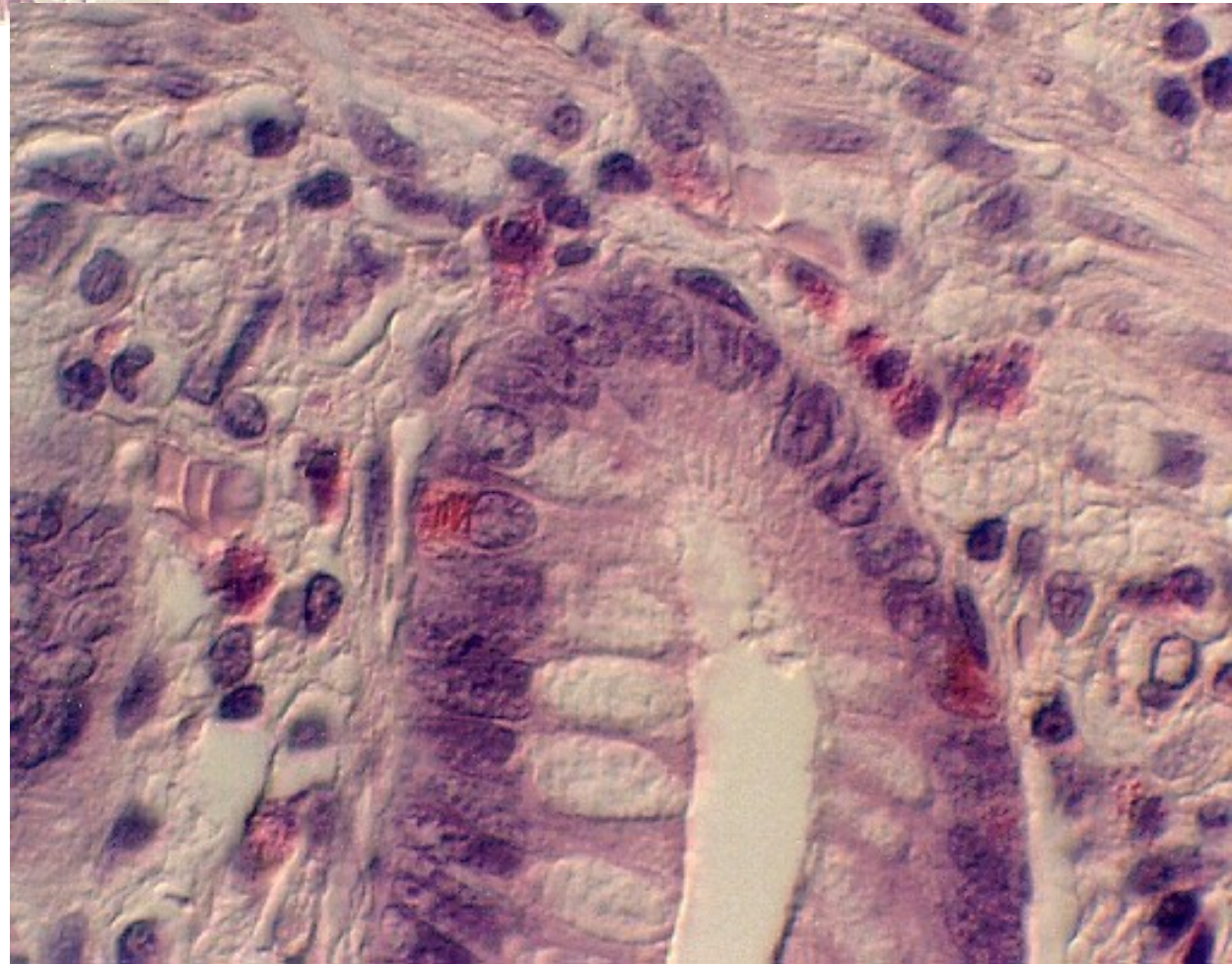
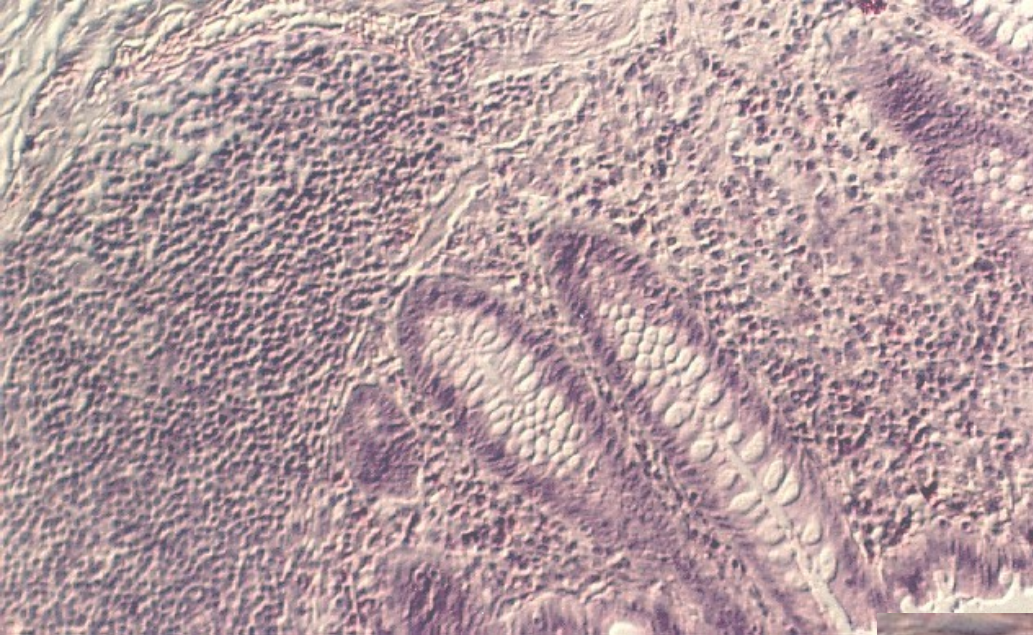
1073, 1075



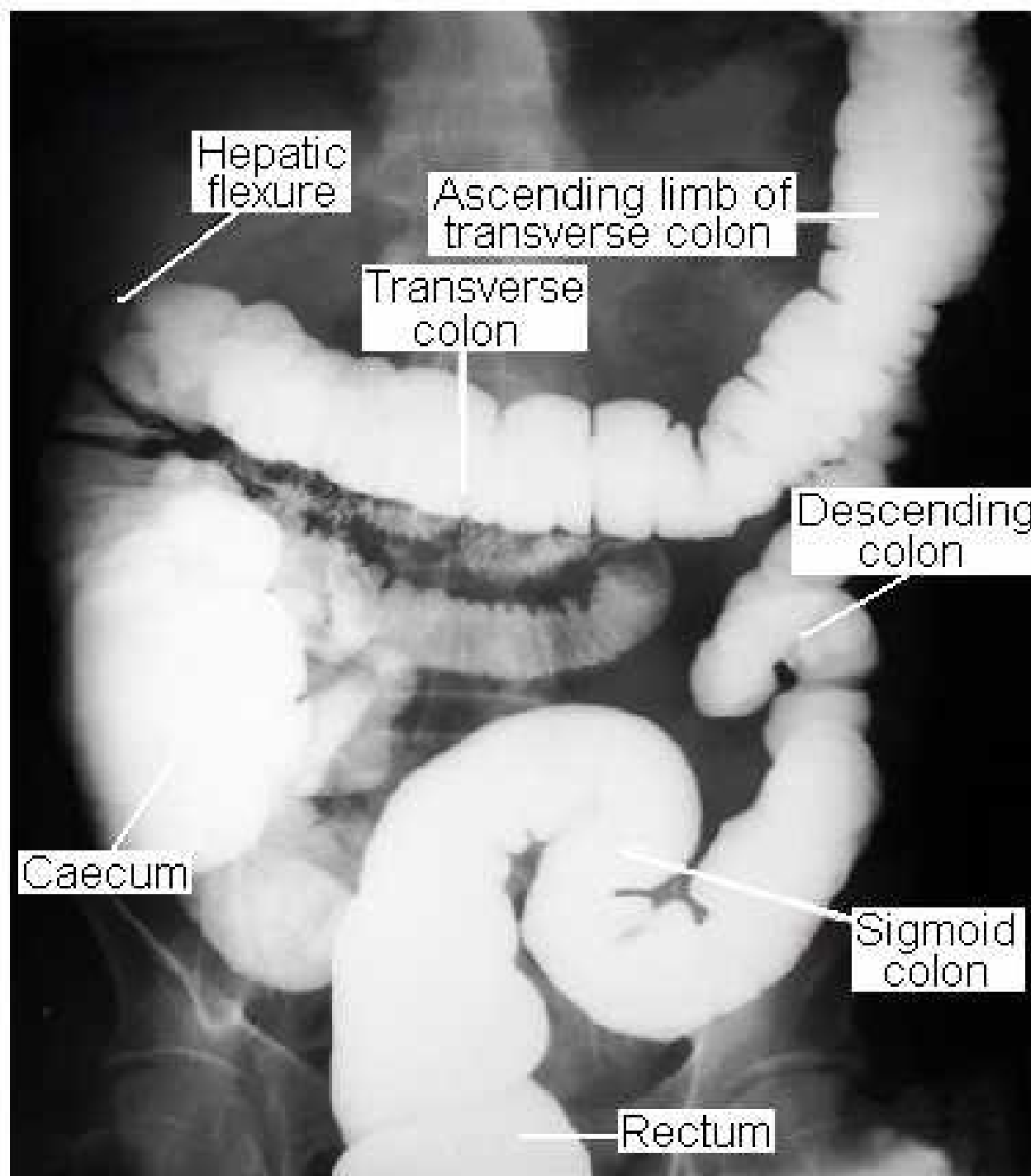
adapted from Thibodeau



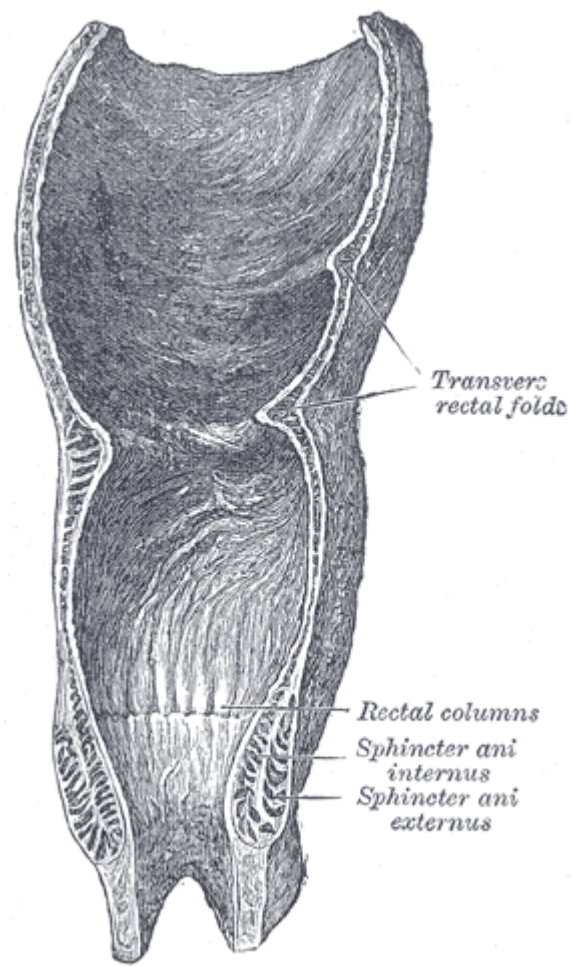
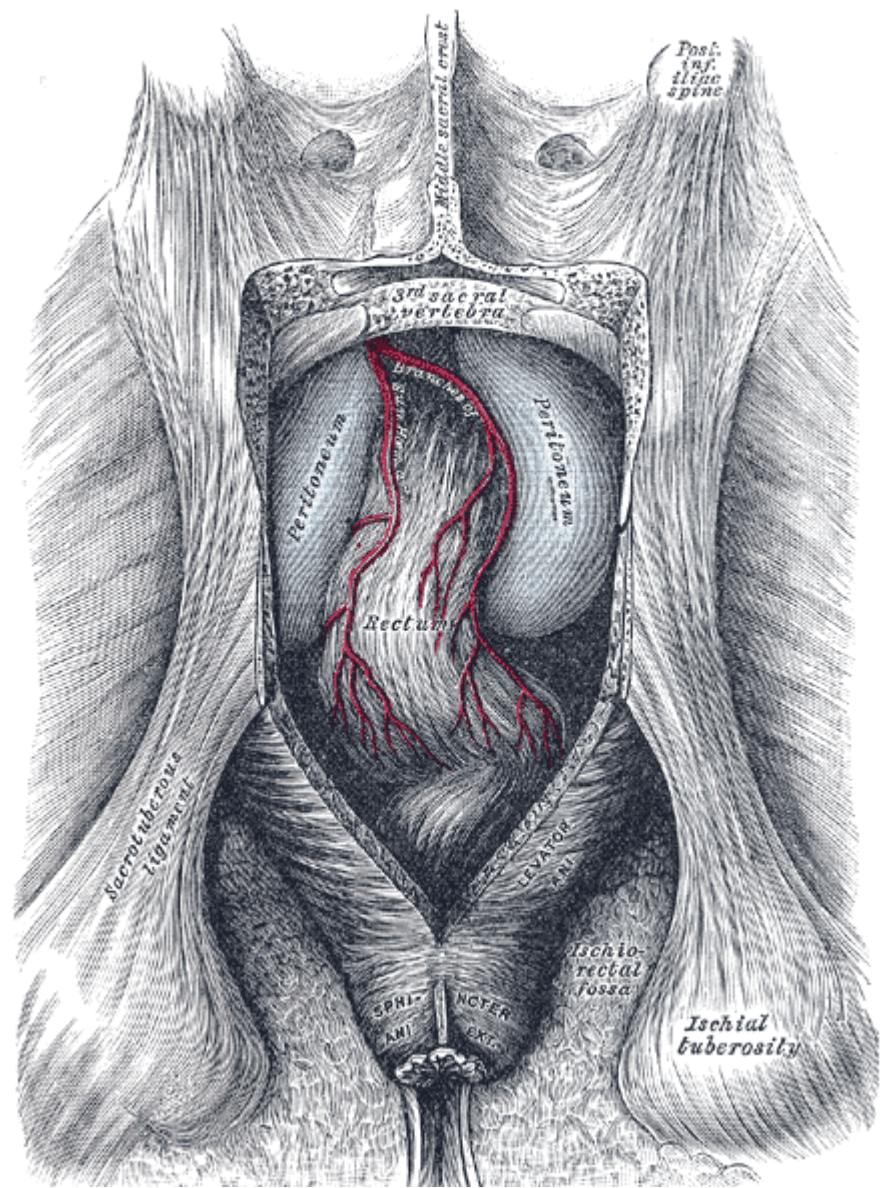
[http://cellbio.utmb.edu/
microanatomy/digestive/
Intestine.htm](http://cellbio.utmb.edu/microanatomy/digestive/Intestine.htm)



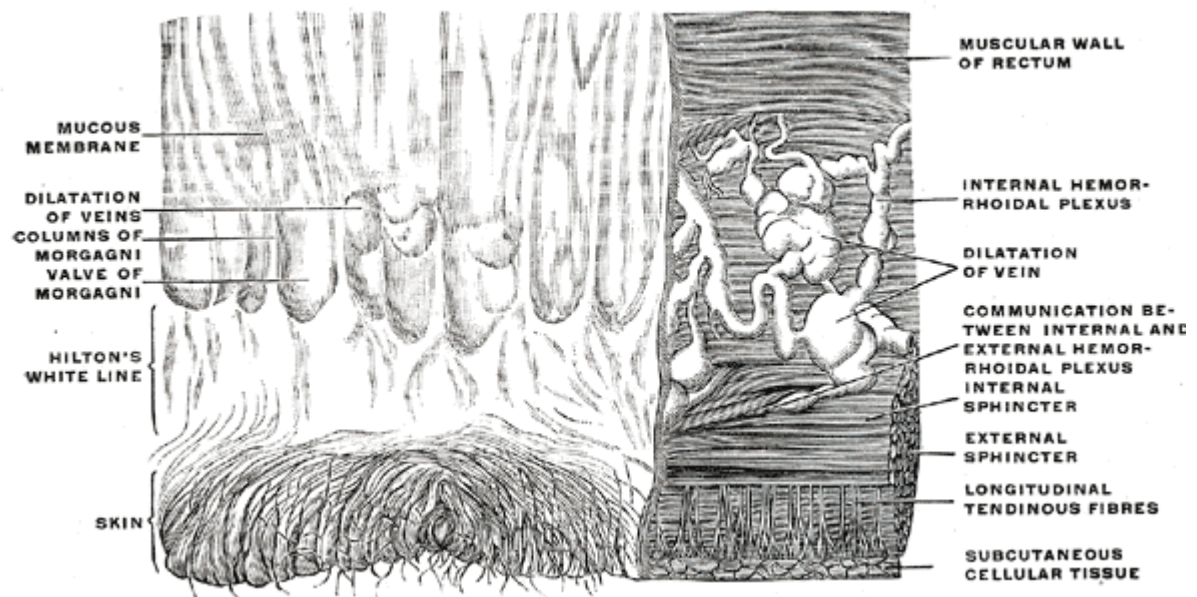
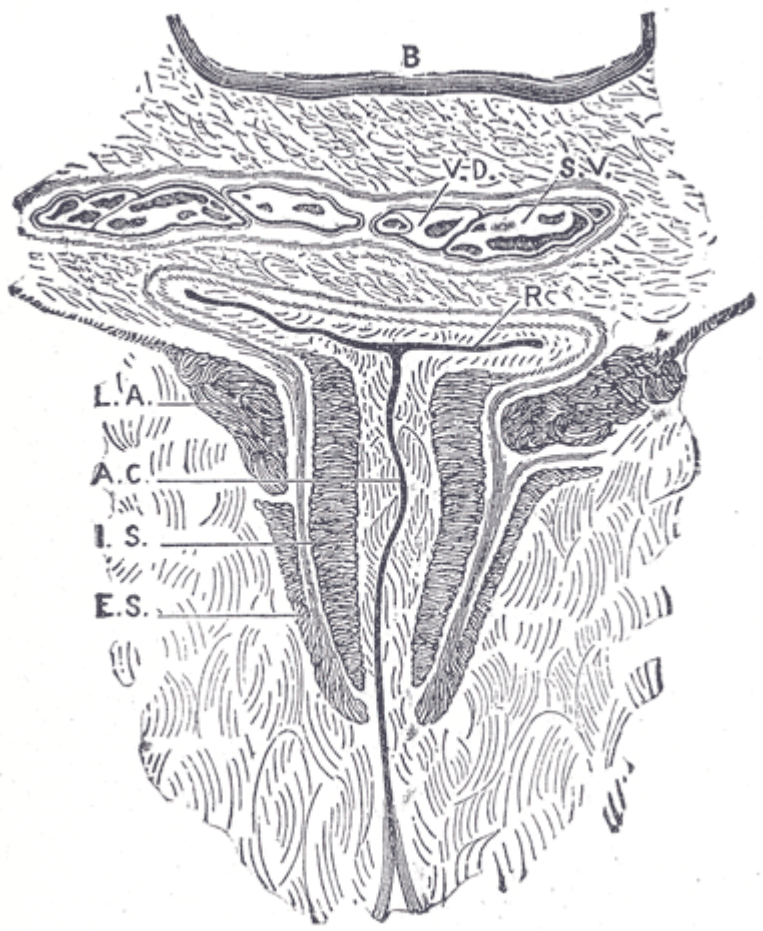
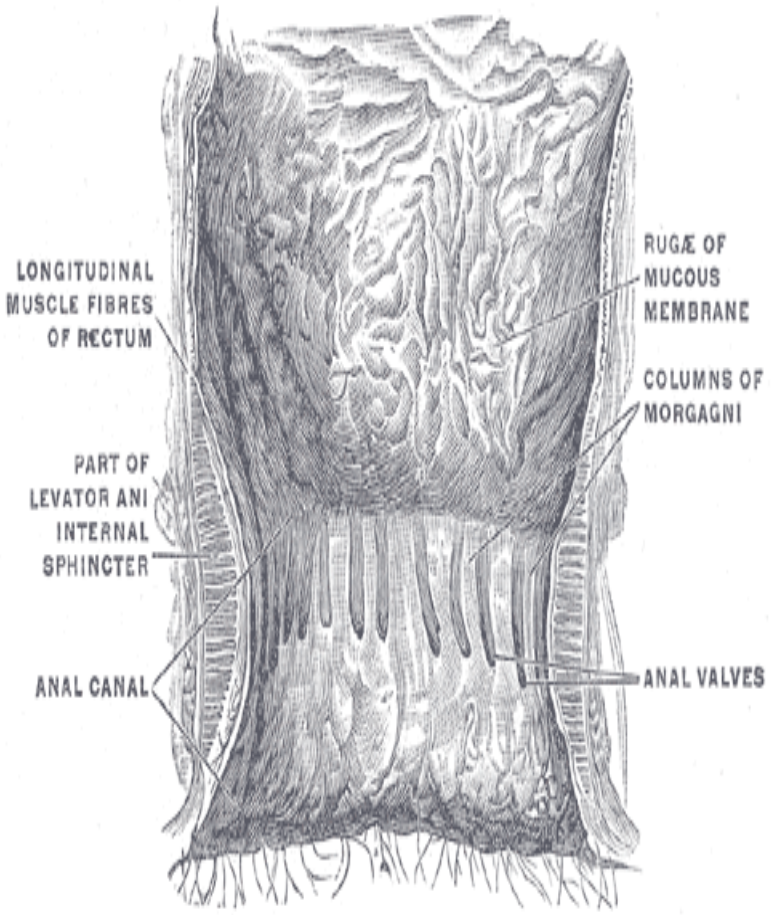
[http://cellbio.utmb.edu/
microanatomy/digestive/
Intestine.htm](http://cellbio.utmb.edu/microanatomy/digestive/Intestine.htm)



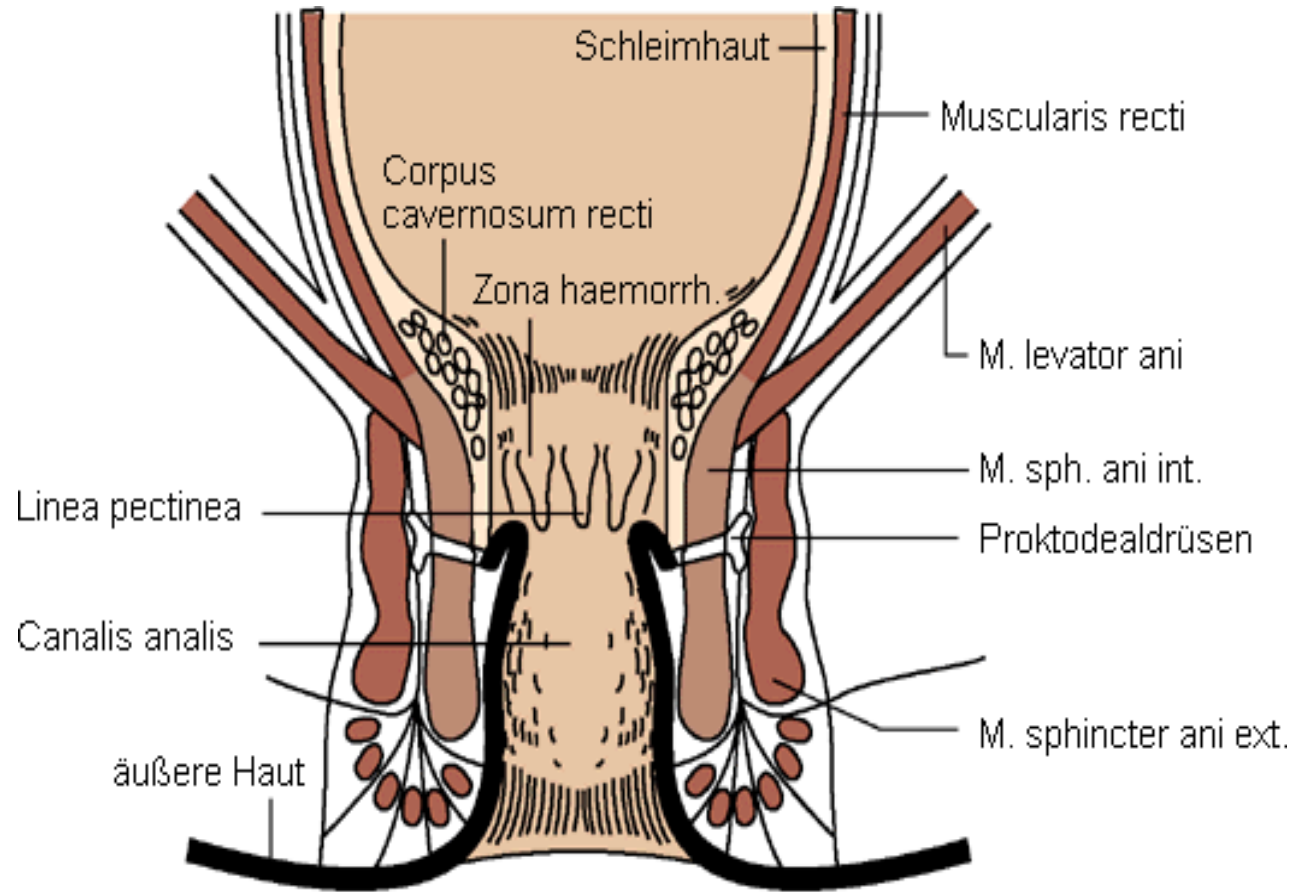
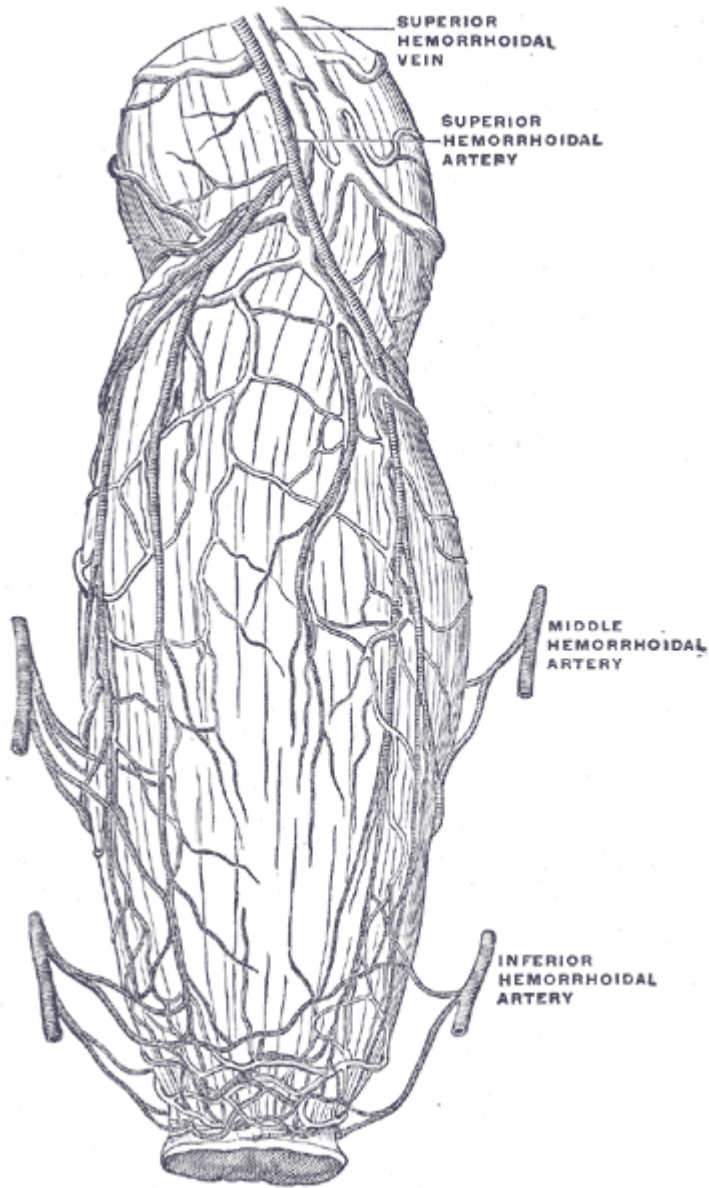
<http://137.222.110.150/calnet/git/page3.htm>



1077, 1078



1079, 1080, 1081



1083, [http://gripsdb.dimdi.de/rochelexikon/pics/CANALIS\\$1.html](http://gripsdb.dimdi.de/rochelexikon/pics/CANALIS$1.html)