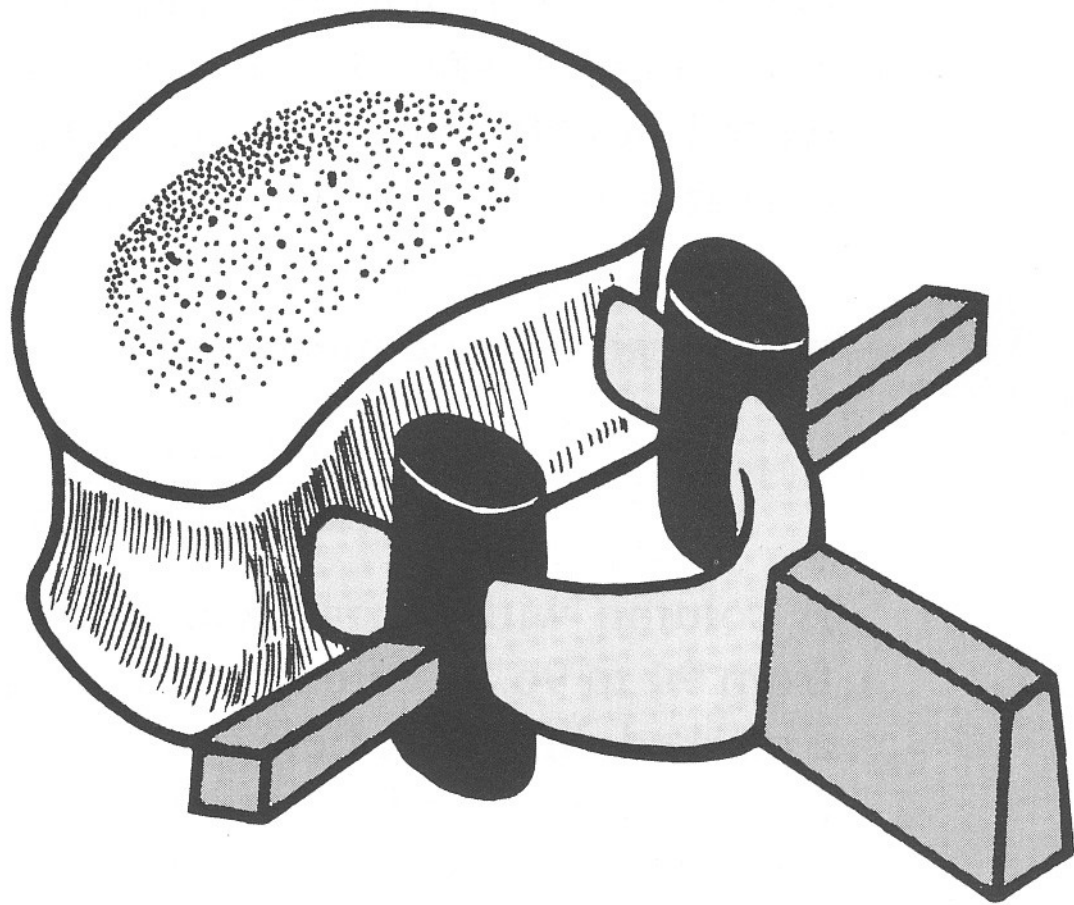
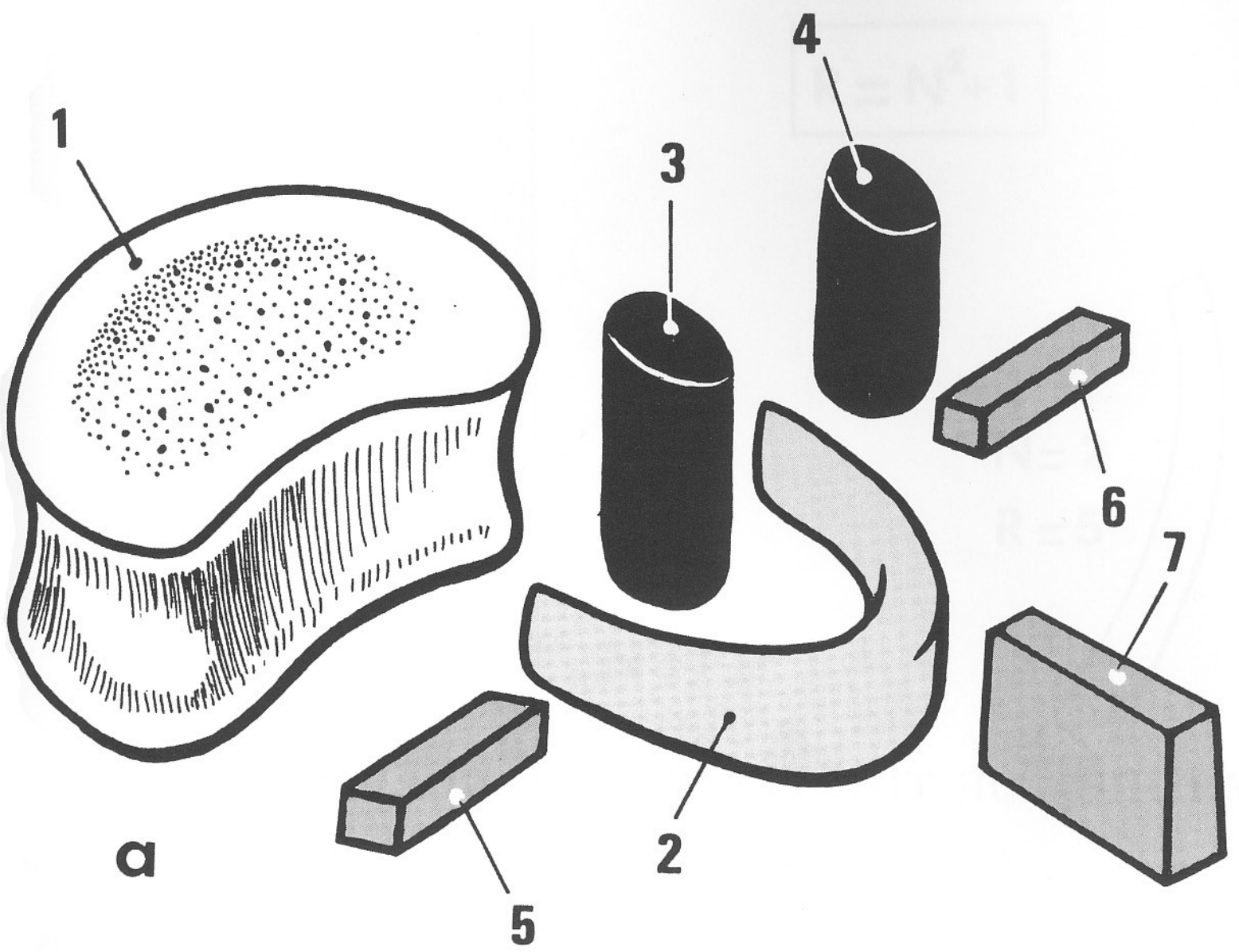
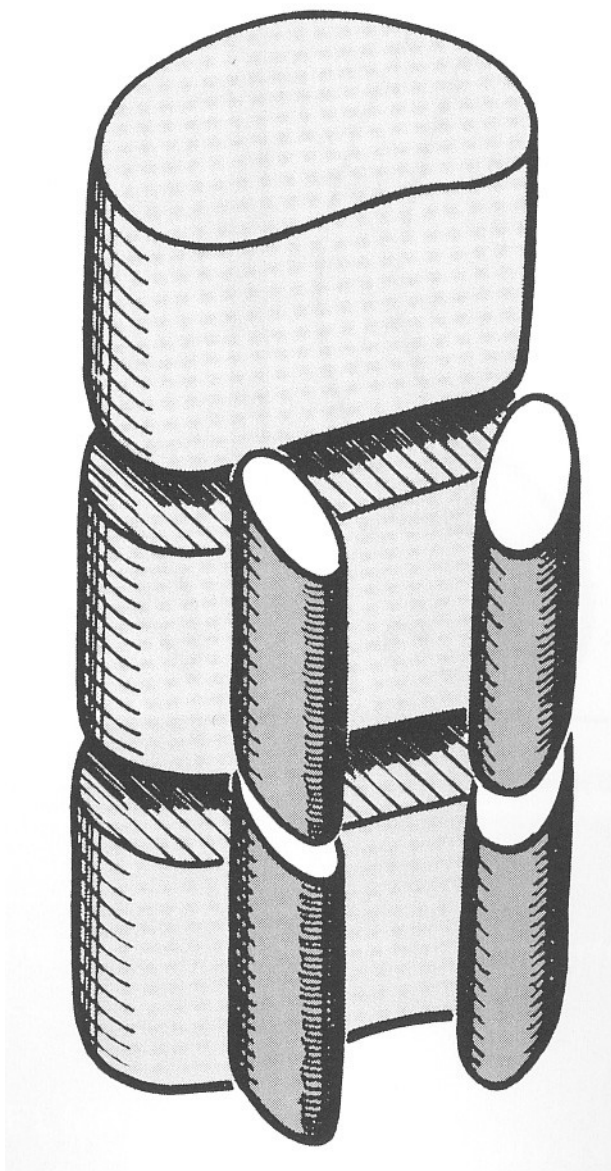
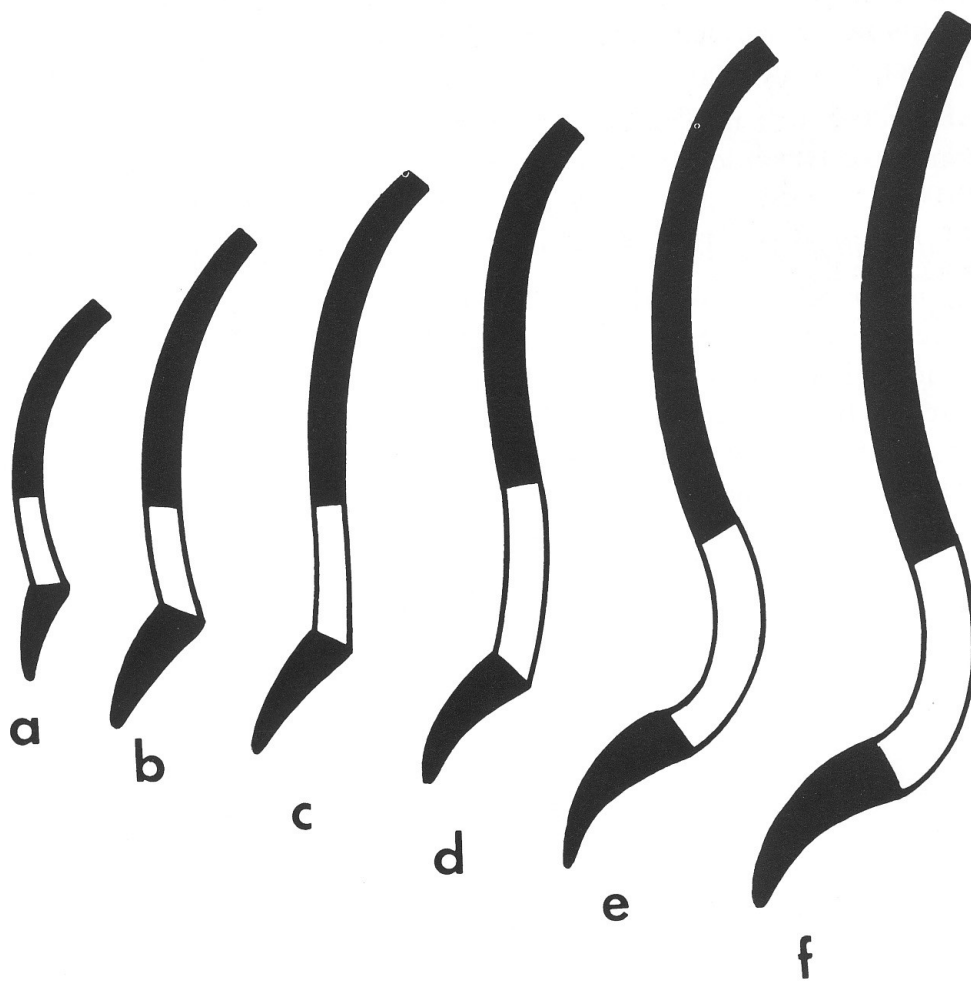


ŠKOLA ZAD









- a) 0 dní
- b) 5 měs
- c) 13 měs
- d) 3 roky
- e) 8 let
- f) 10 let

$$R = N^2 + 1$$

$N=0$
 $R=1$



a

$N=1$
 $R=2$



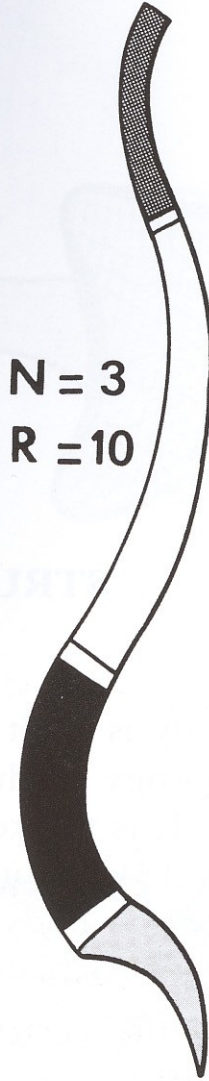
b

$N=2$
 $R=5$

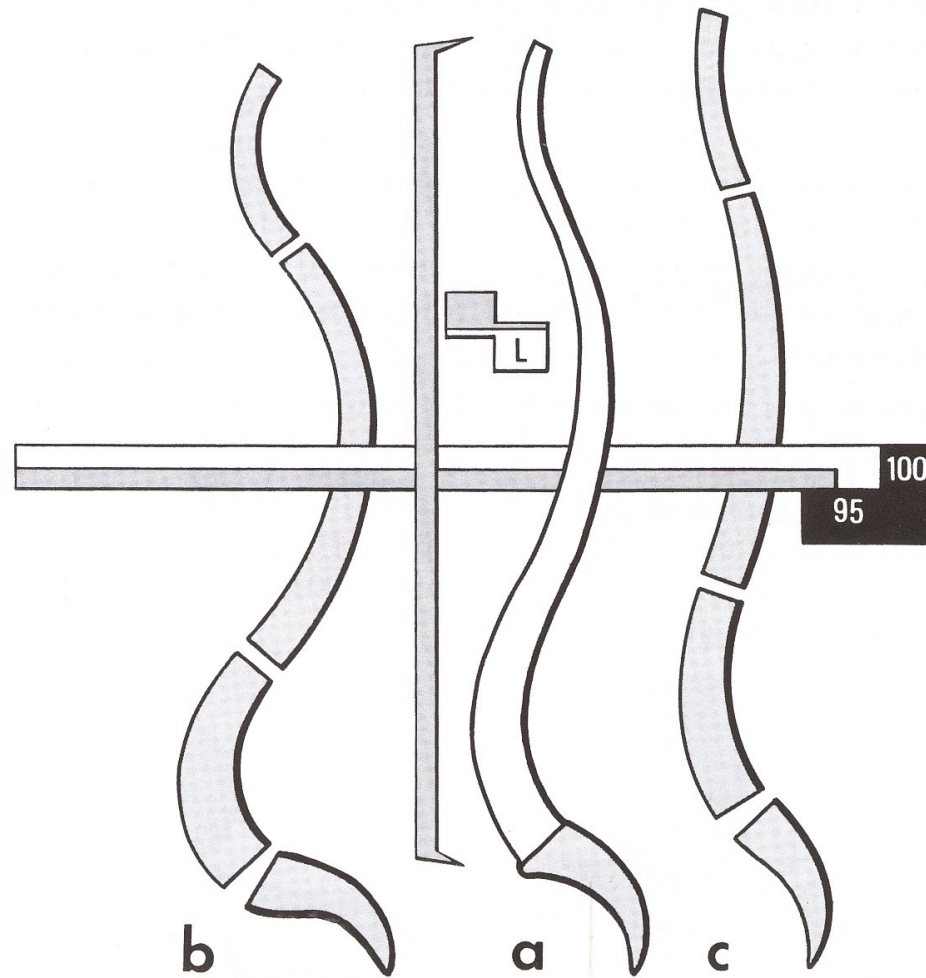


c

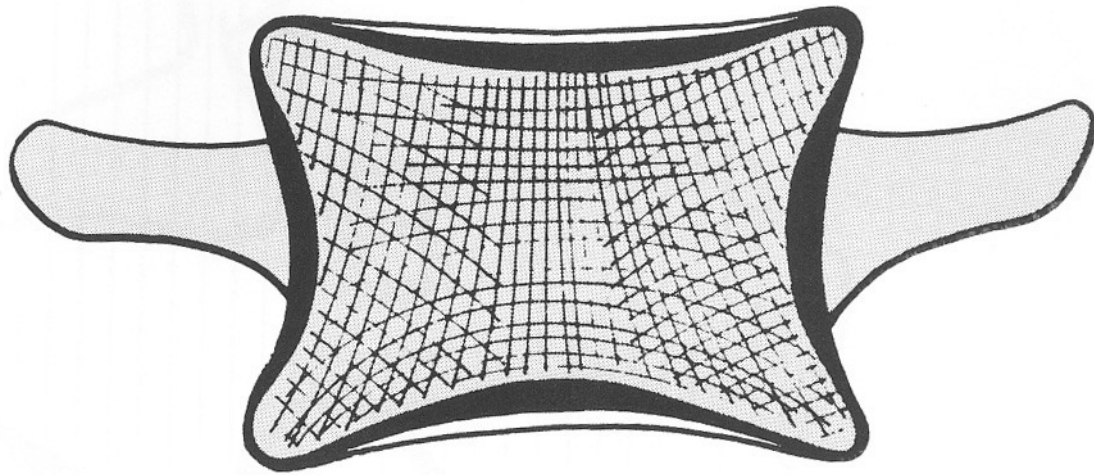
$N=3$
 $R=10$

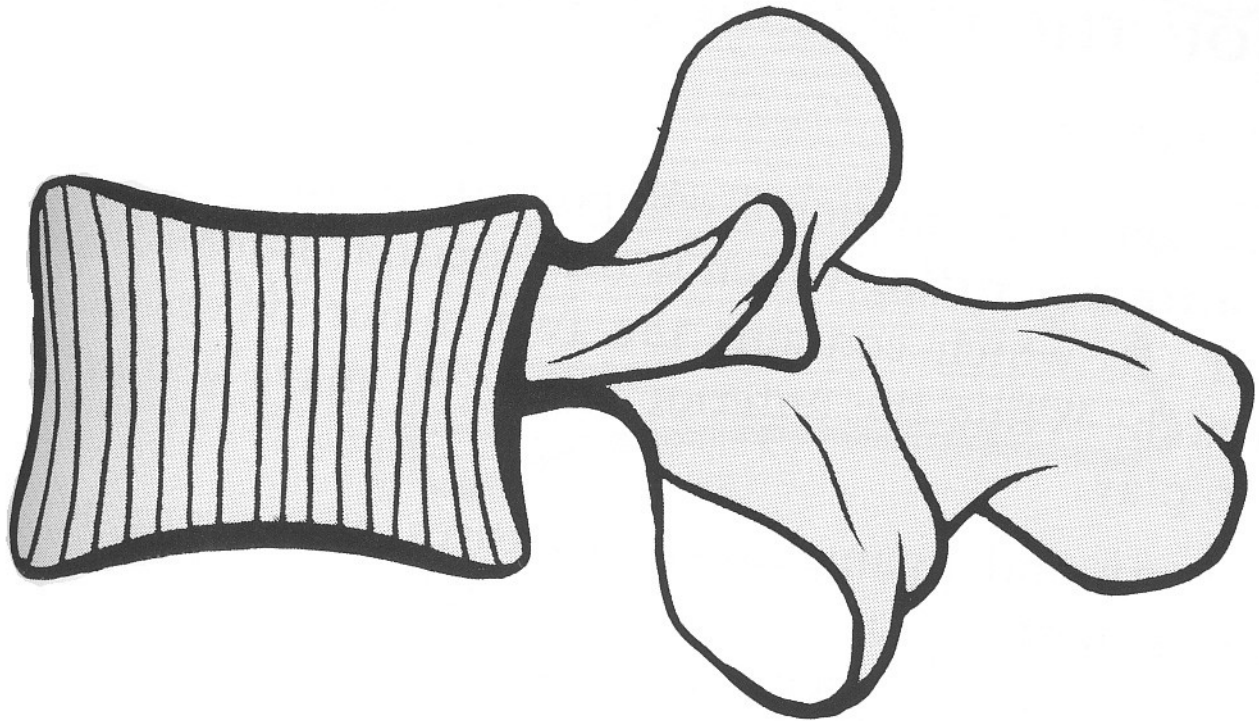


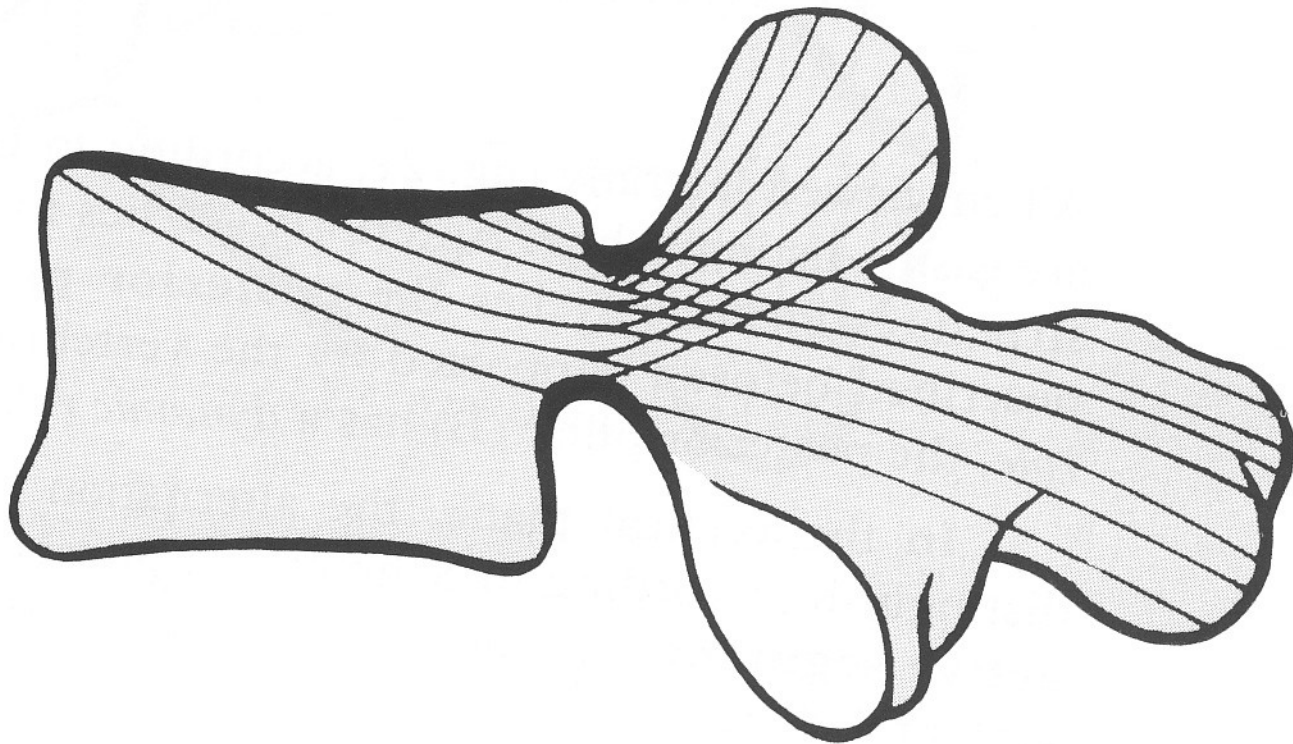
d

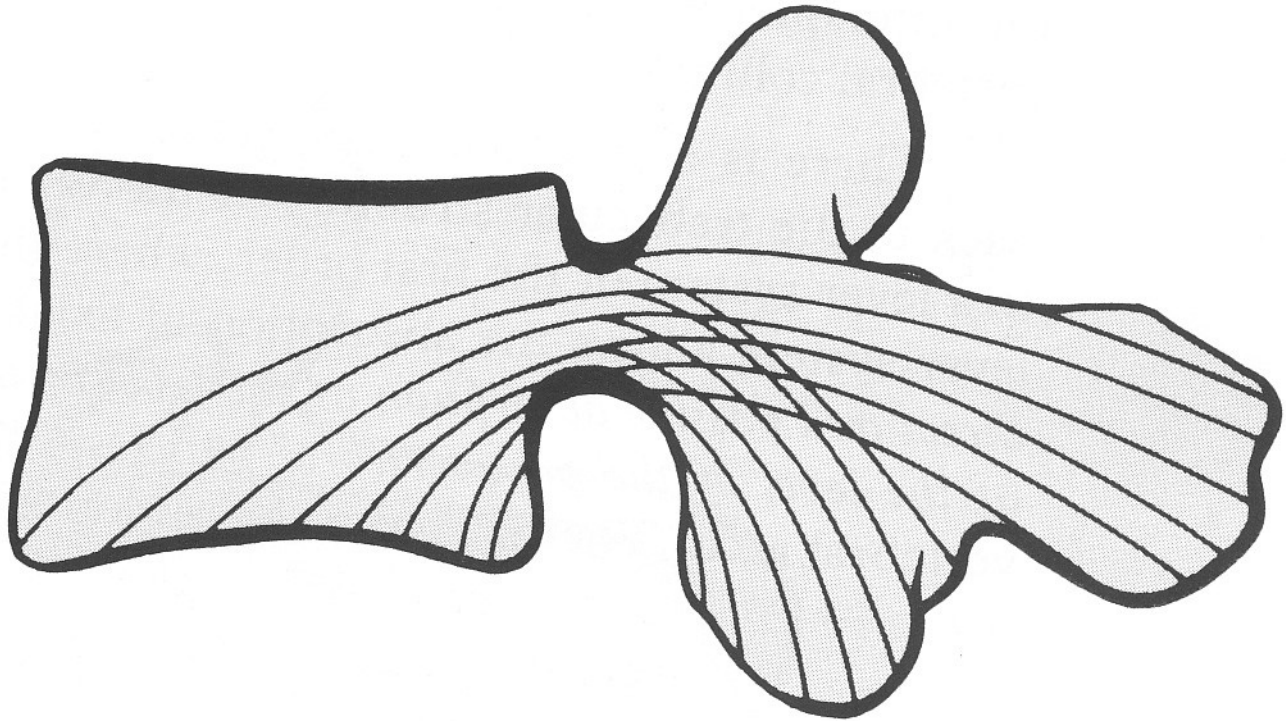


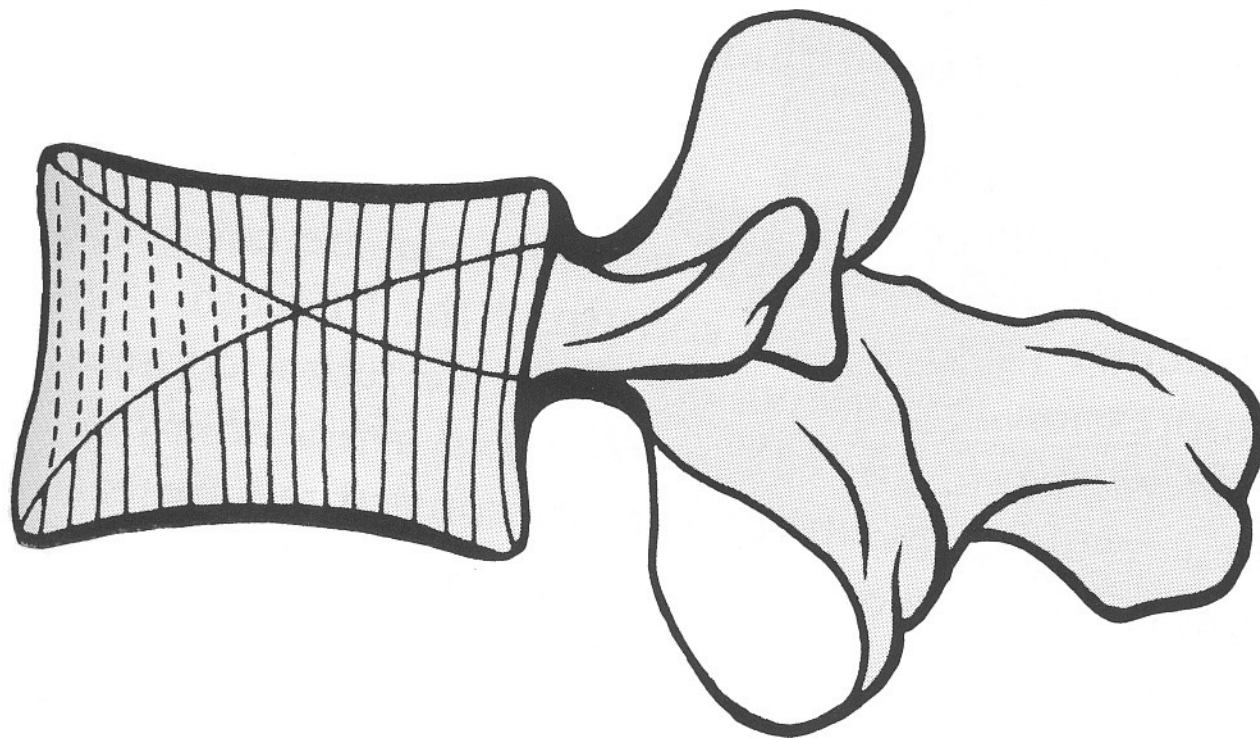
INDEX	low	average 94	high 96
curvatures	prominent	intermediate	flat
functional type	dynamic	intermediate	static
DELMAS INDEX	H (height) x 100		
	L (fully extended length)		



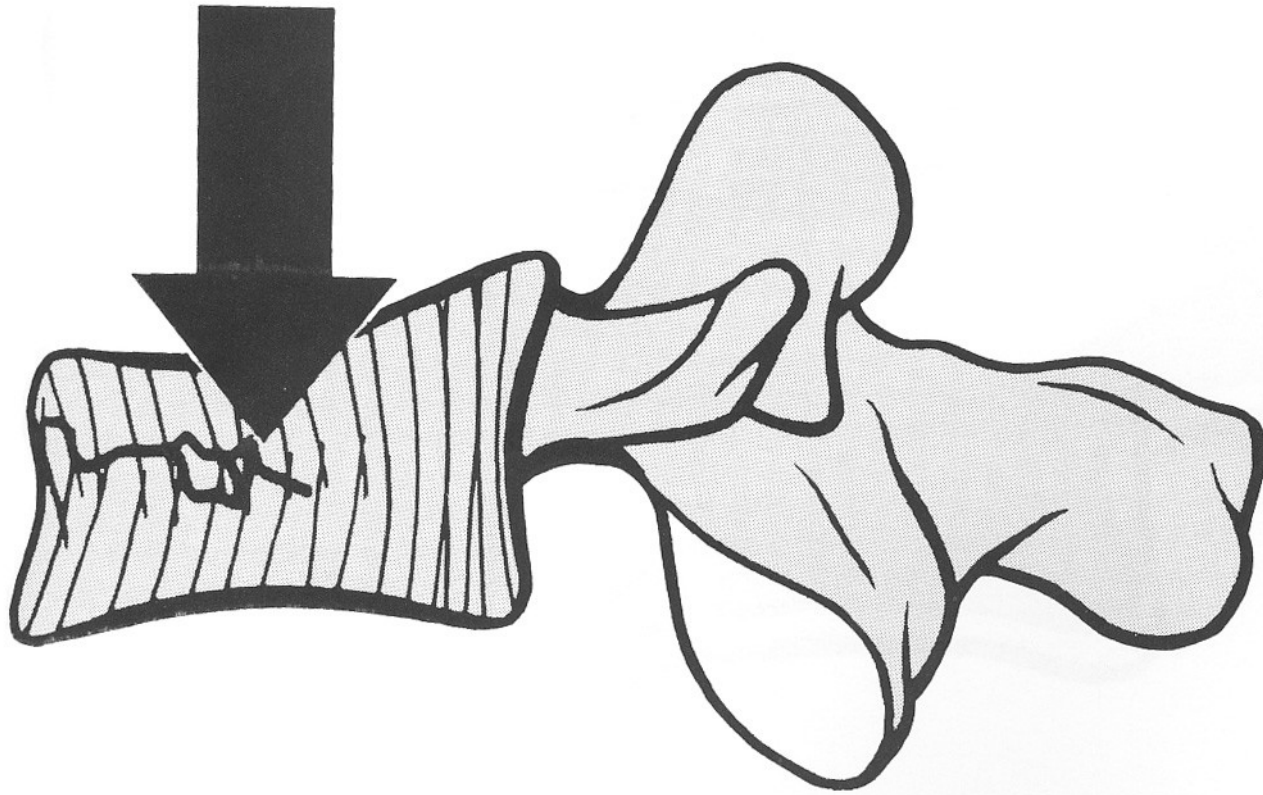




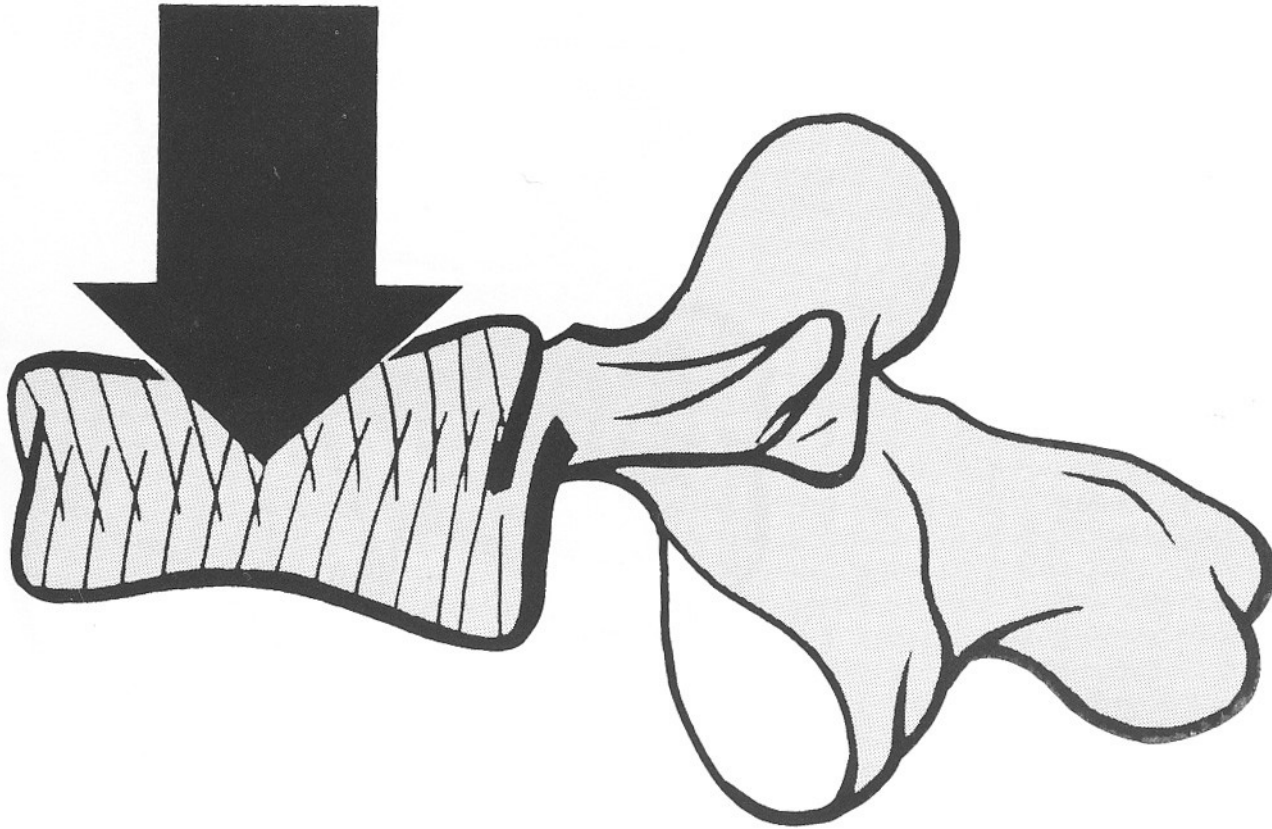


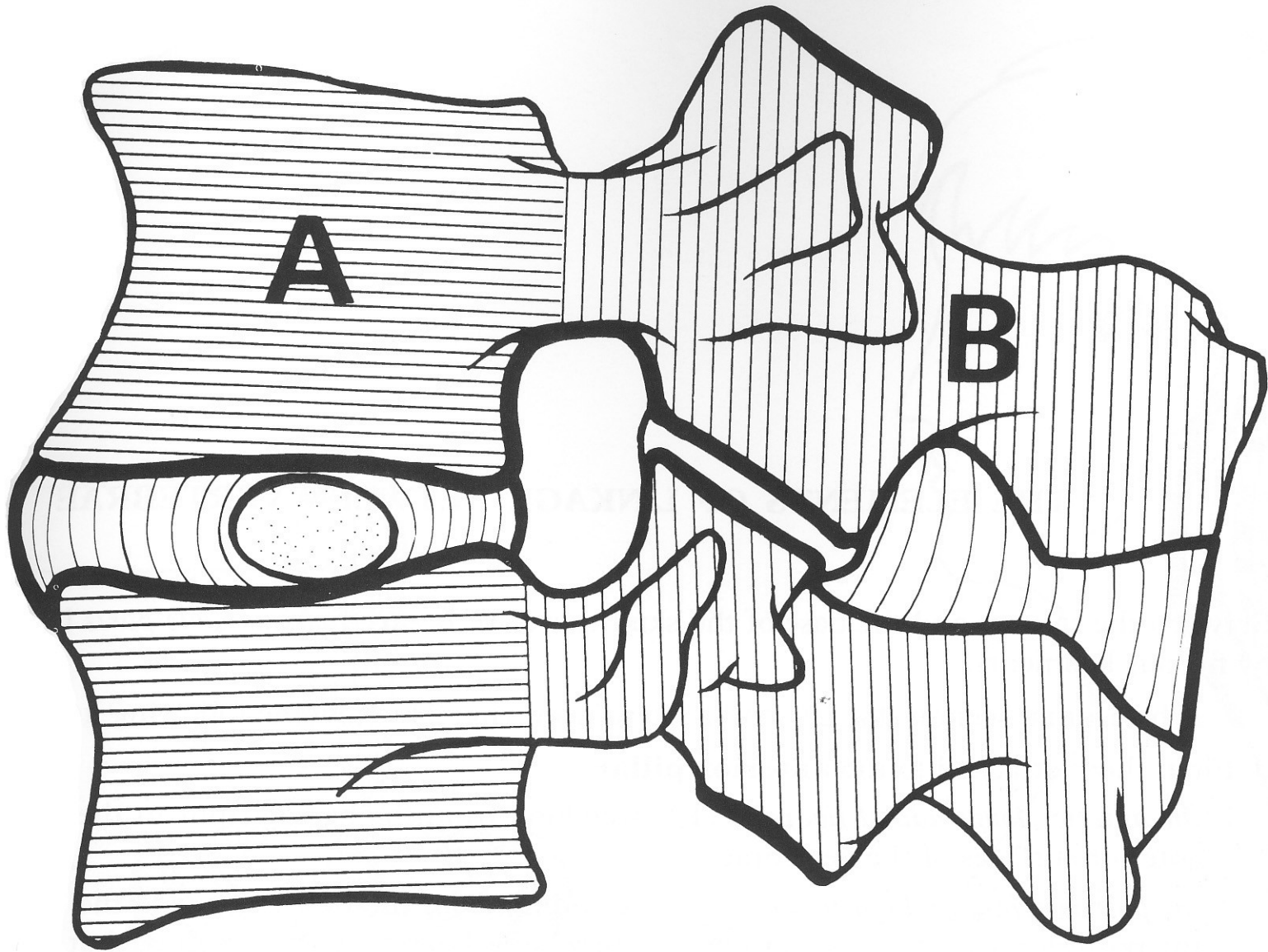


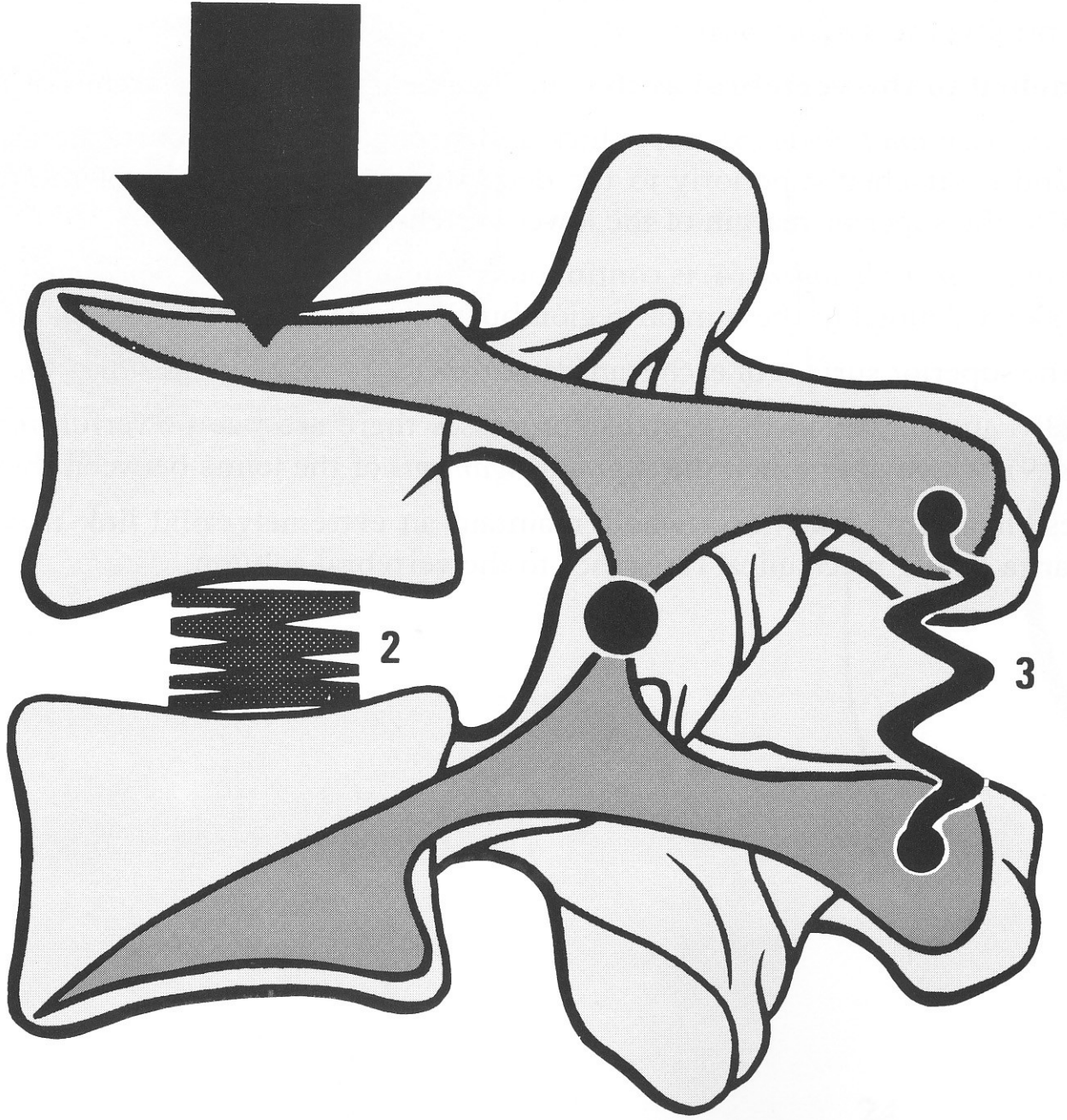
6000 N

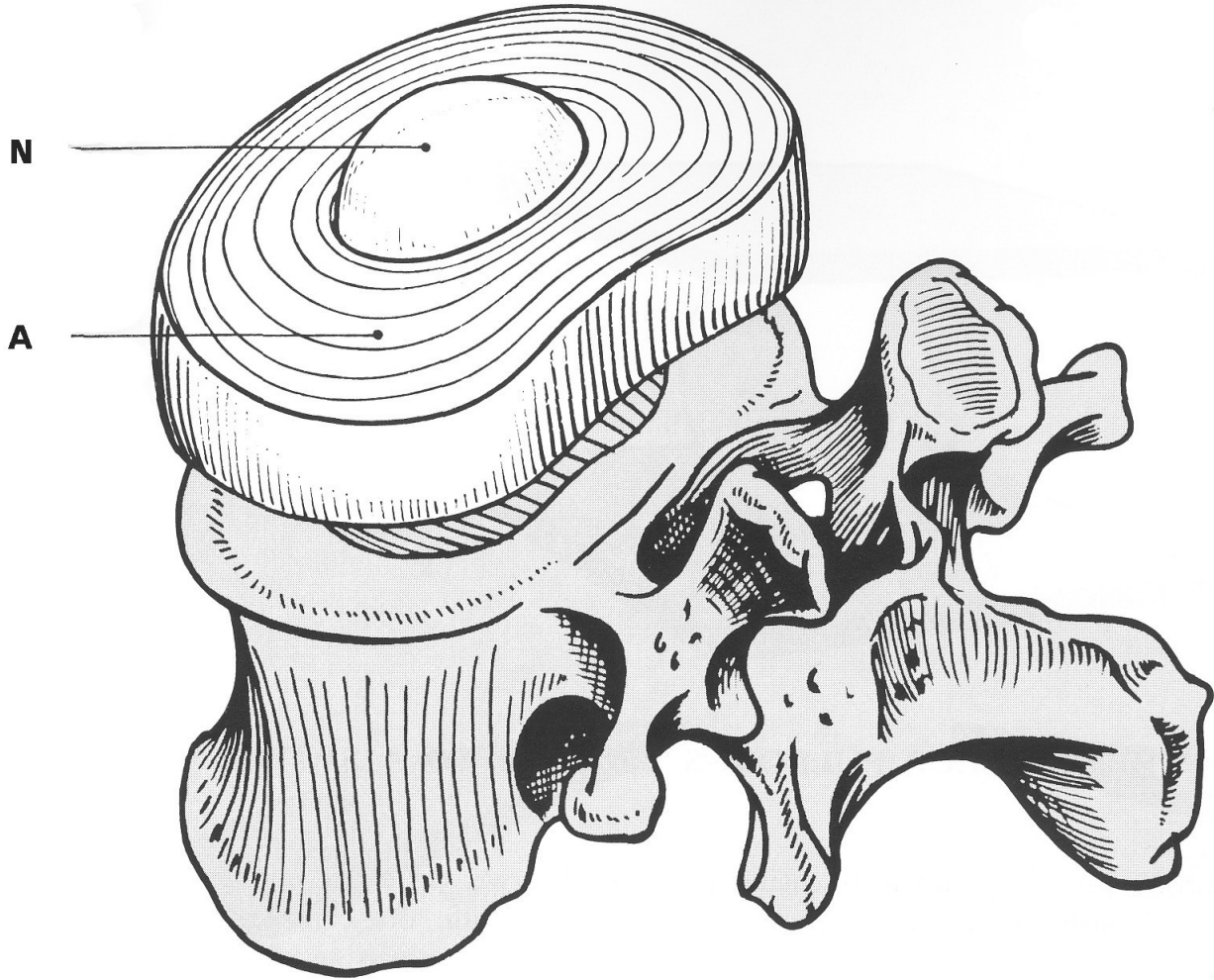


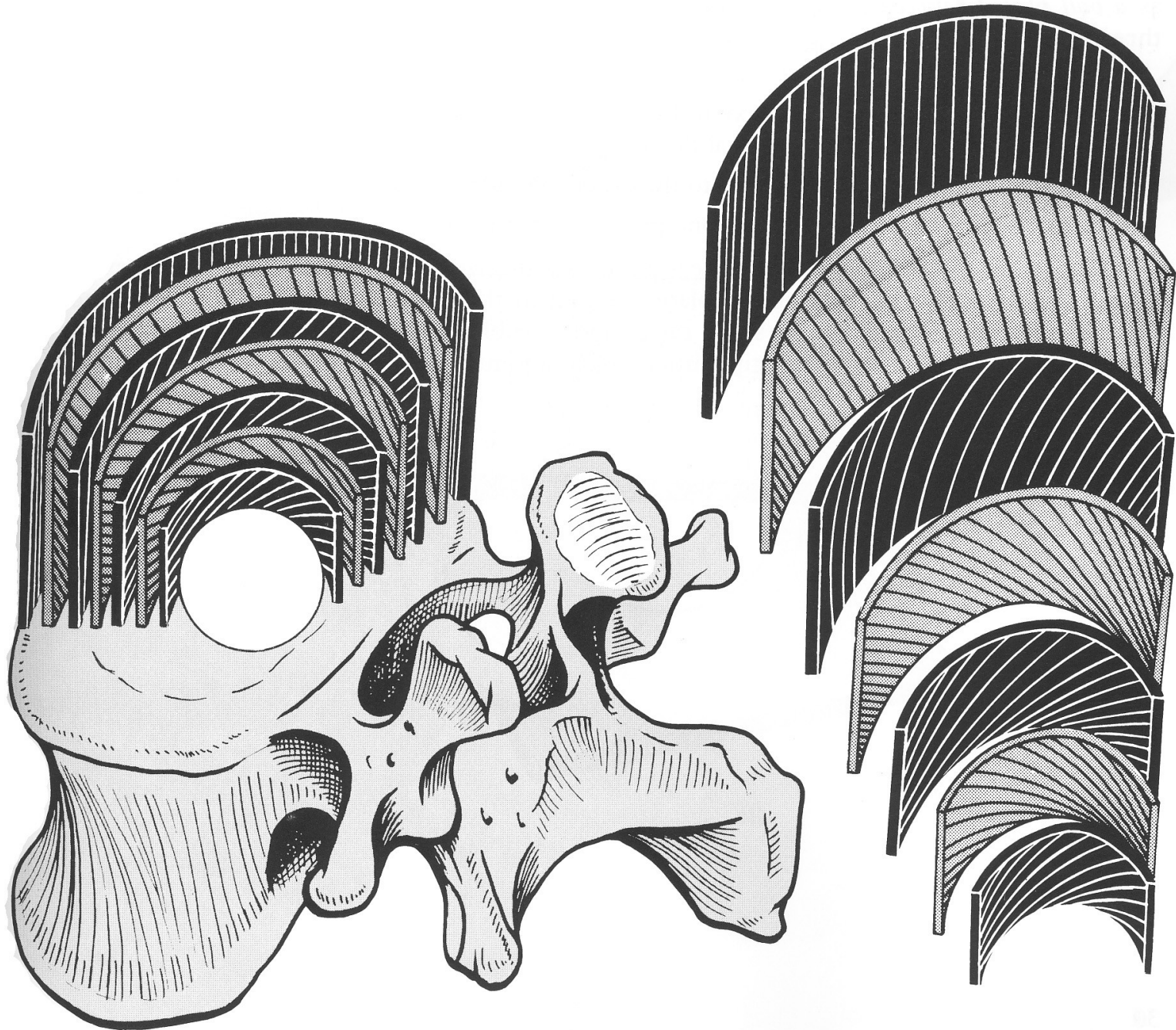
8000 N

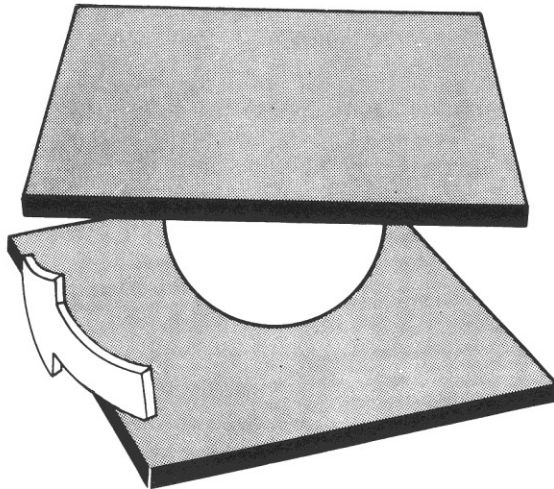
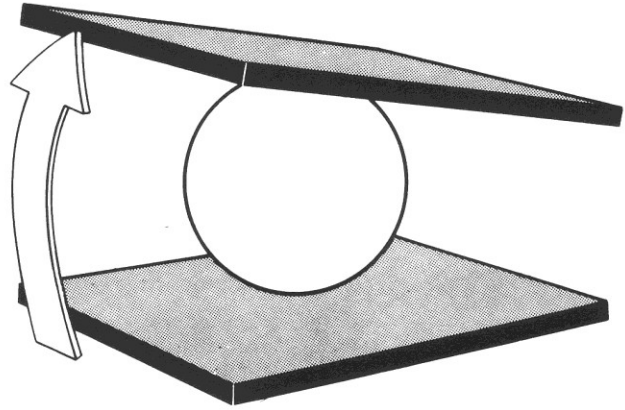
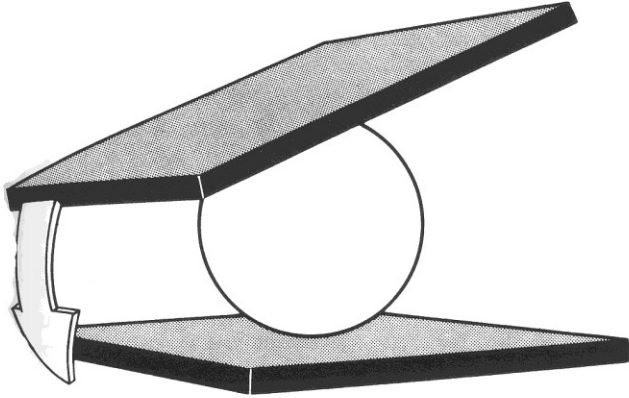
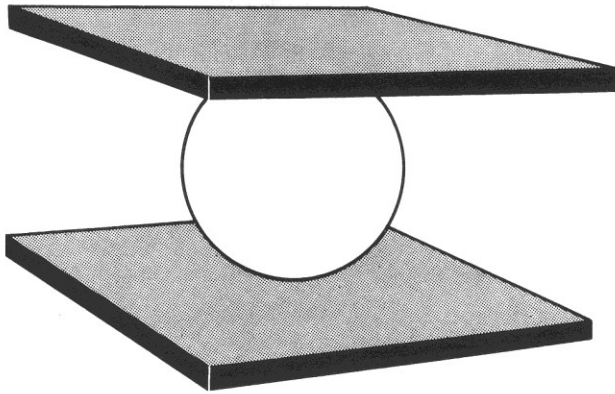


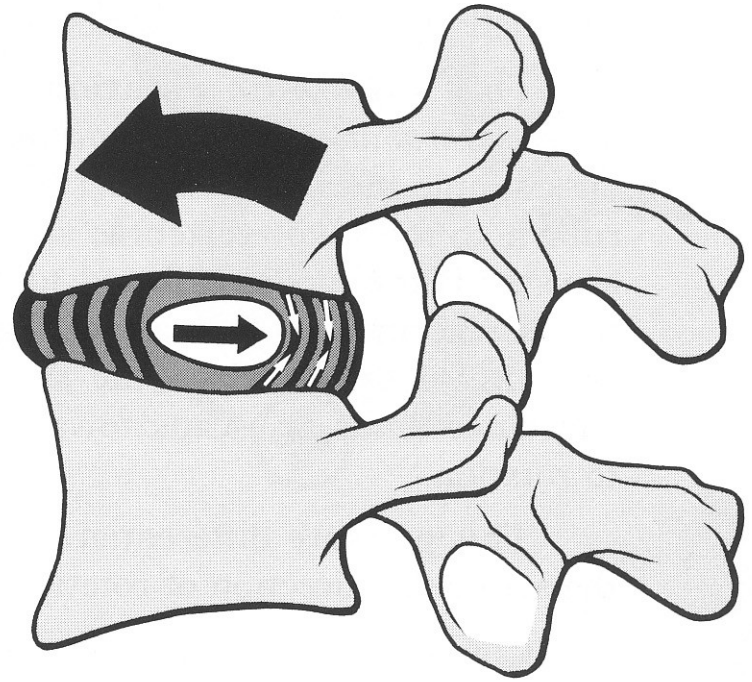
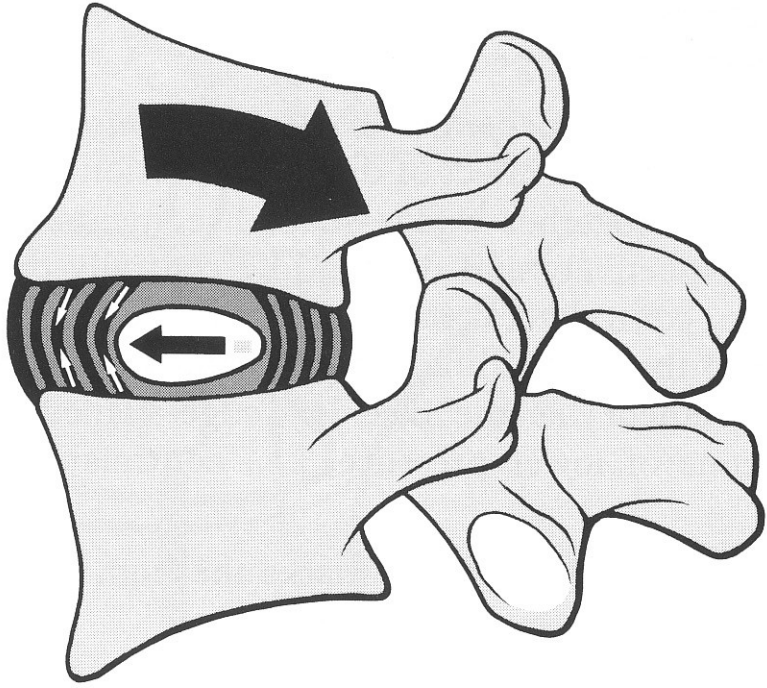




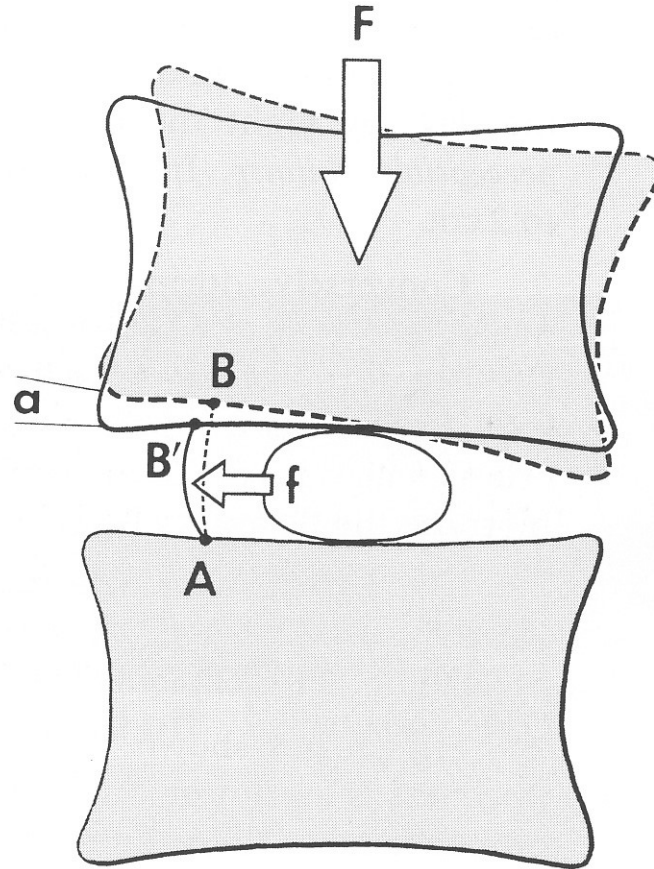


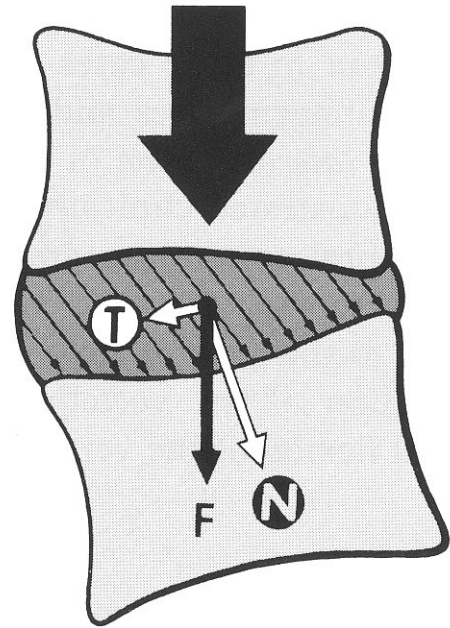
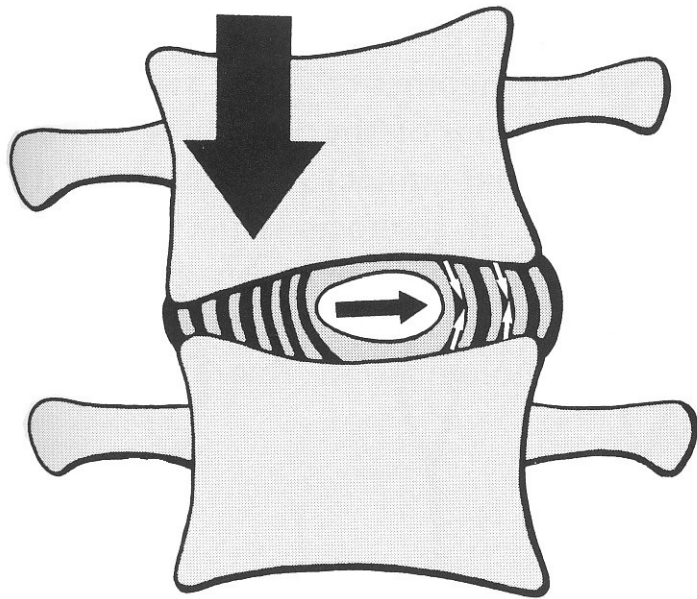


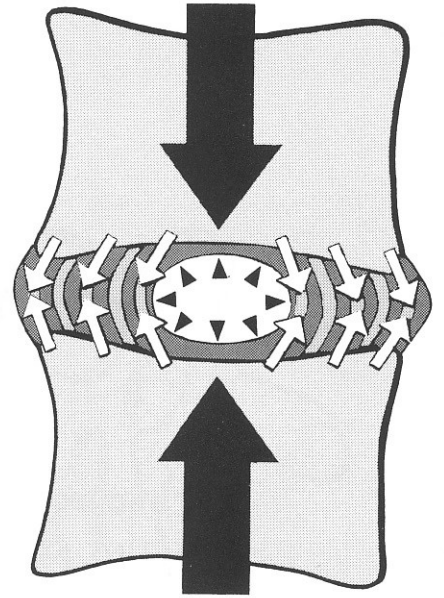
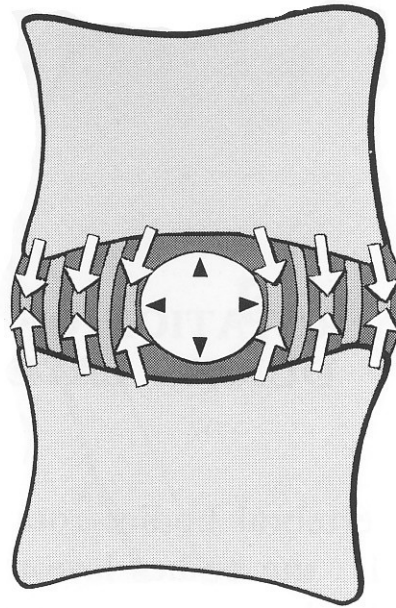
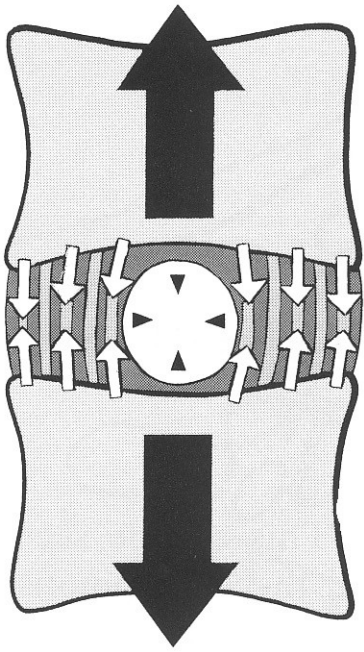


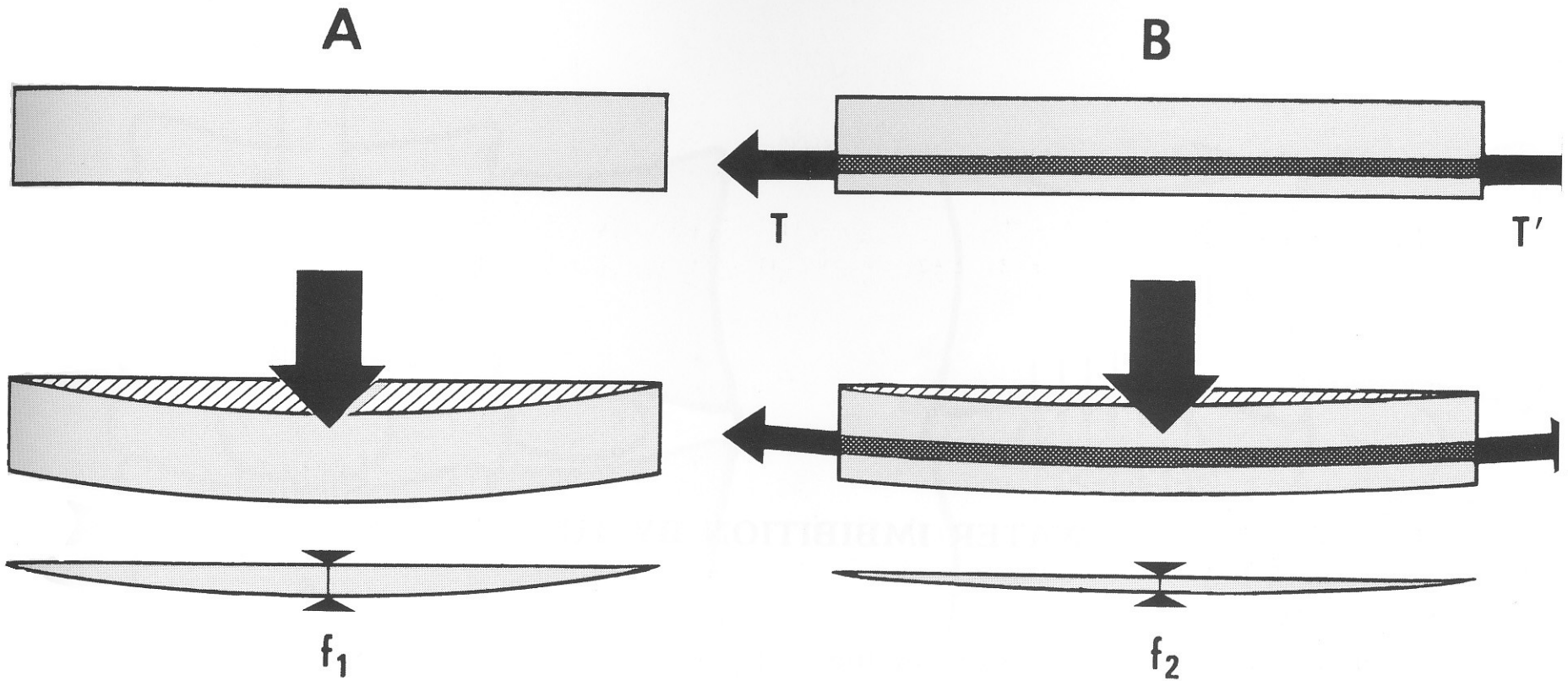


mechanismus self-stabilizace



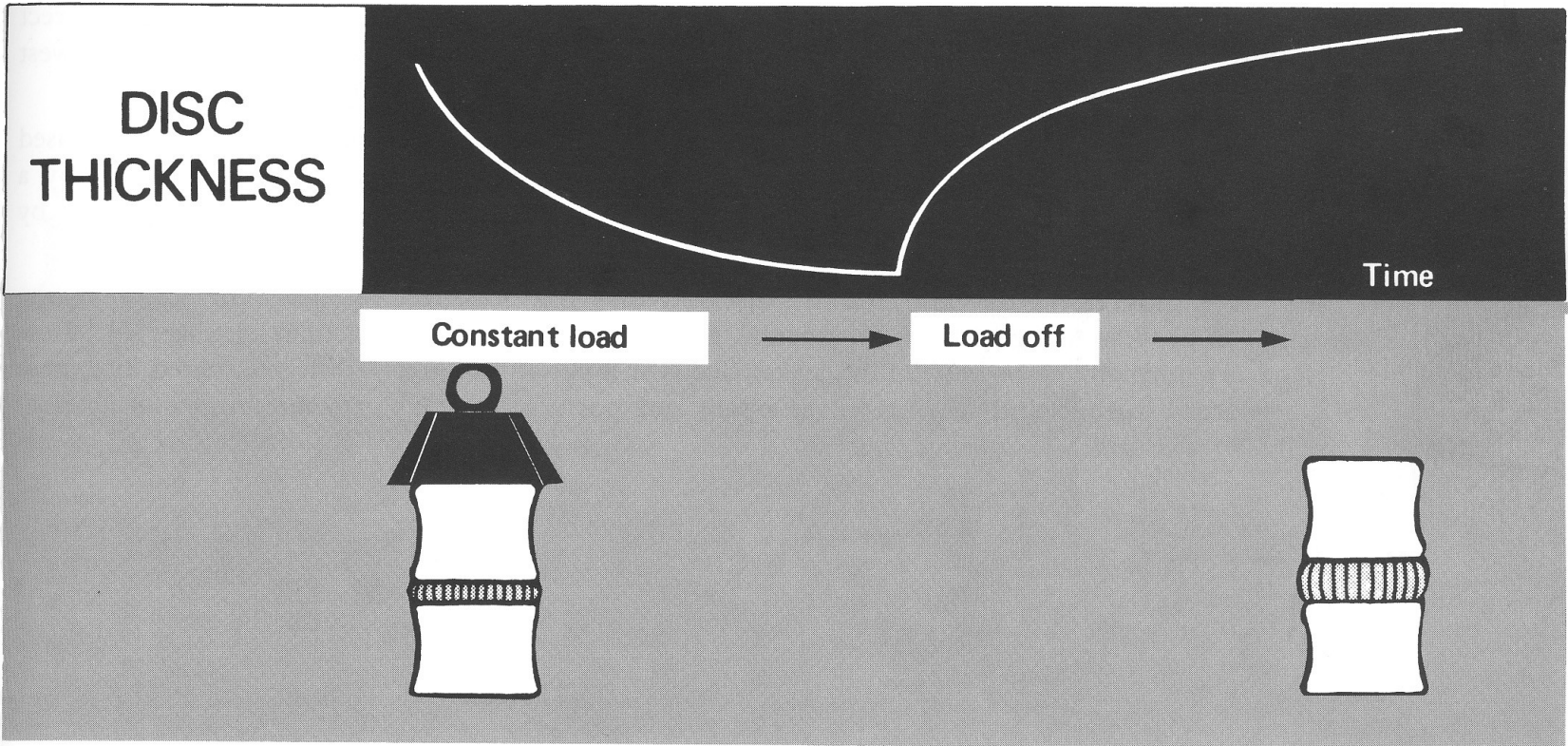


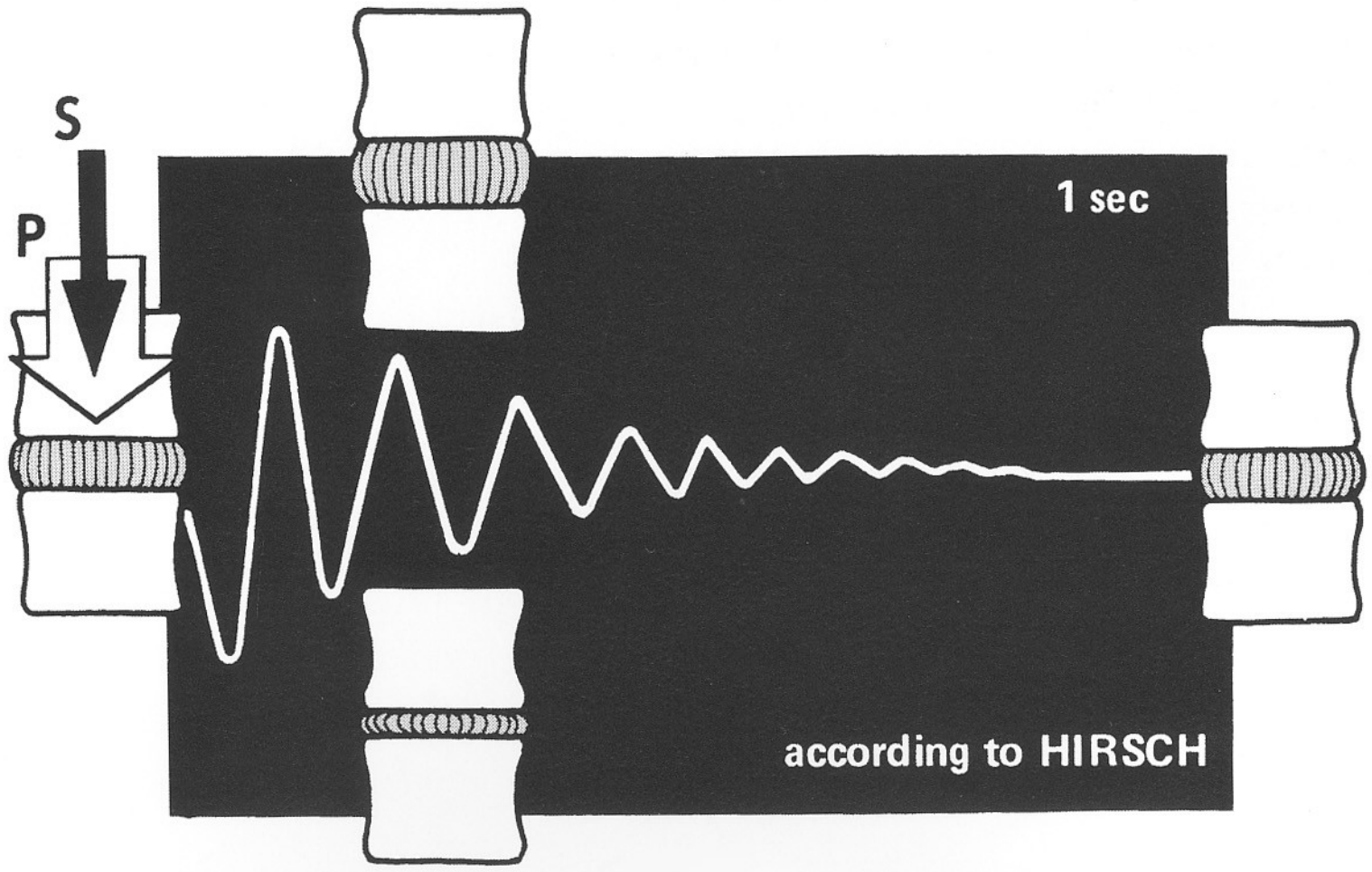




snížení výšky disku při kompresi je větší v případě nulového výchozího tlaku (f_1) nucleus pulposus než v případě předpětí daném absorbcí vody do nucleus pulposus

vztah hydratace, věku a rozsahu pohybu v závislosti na výšce disku ...

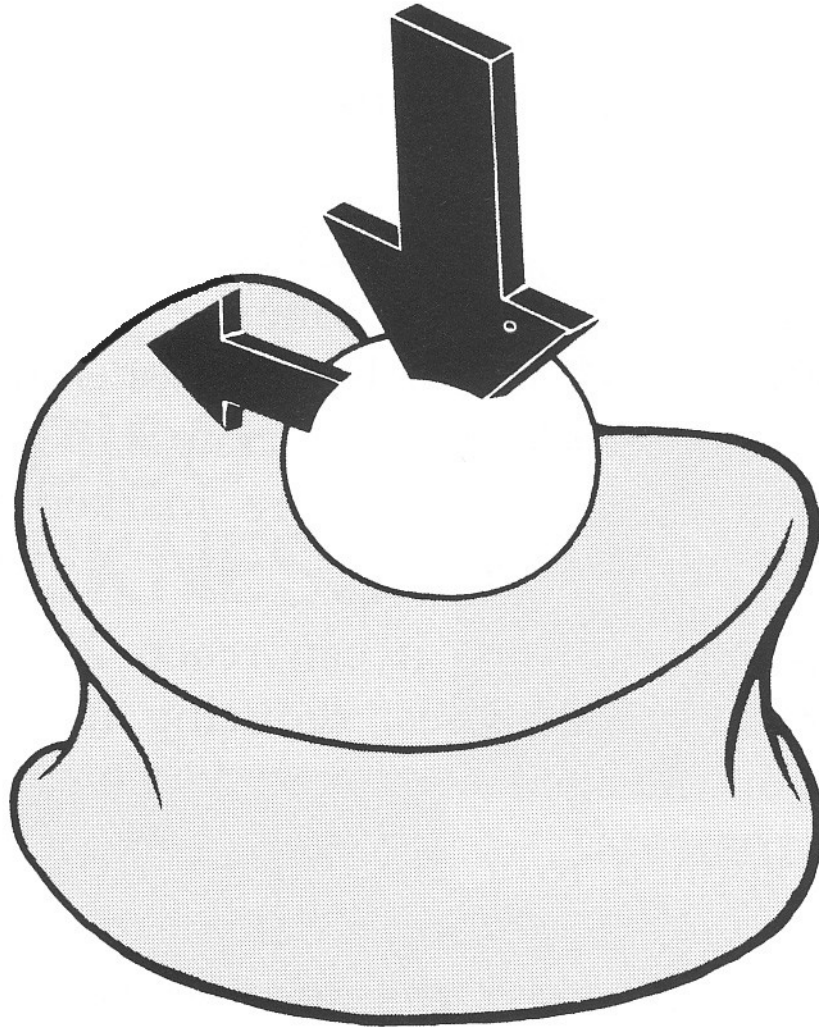




1 sec

according to HIRSCH

axiální zatížení A/N = 1:3



L5-S1
(**axiální
zatížení**)

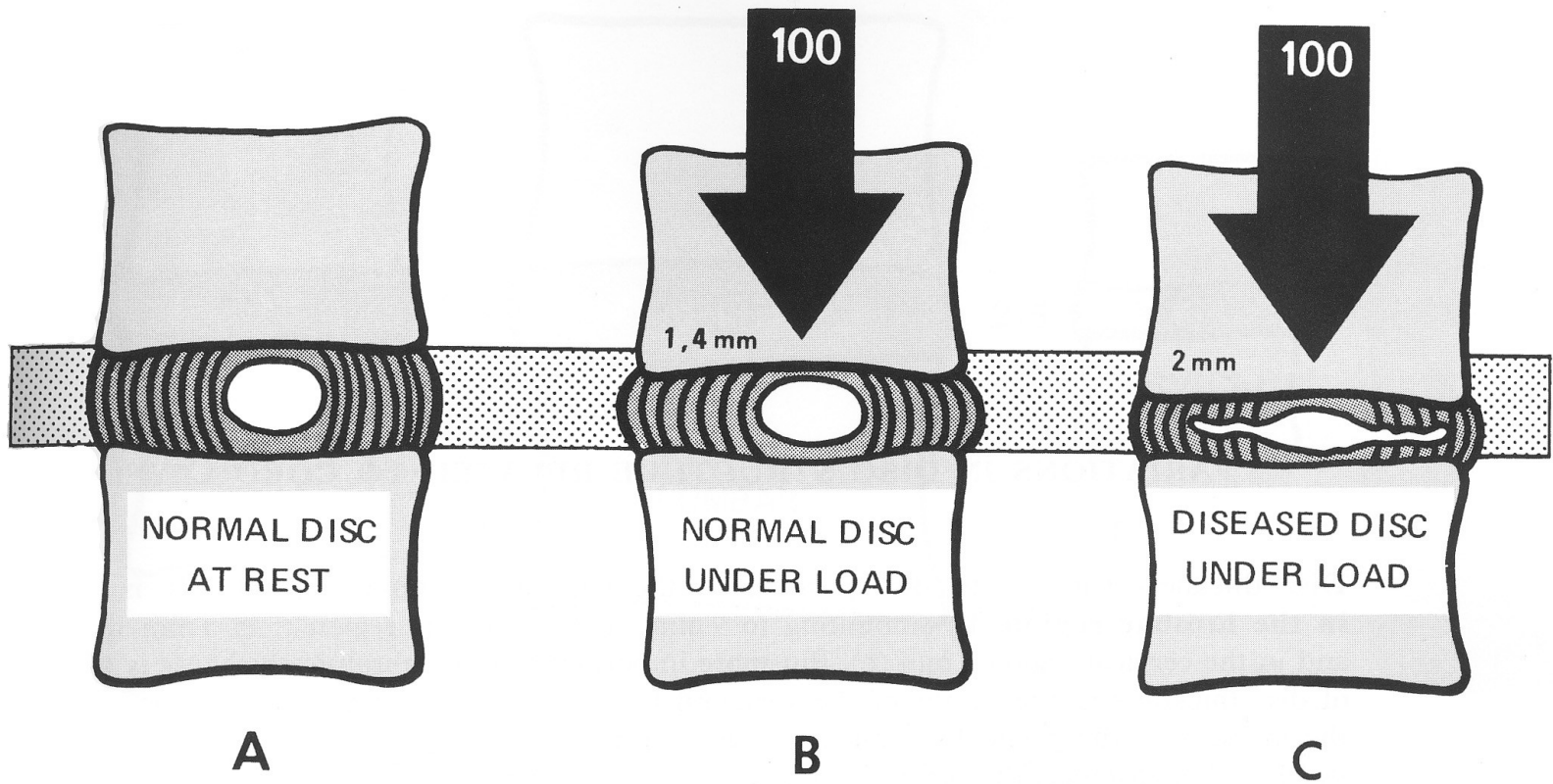
- 280 N
- 16 kg.cm⁻²

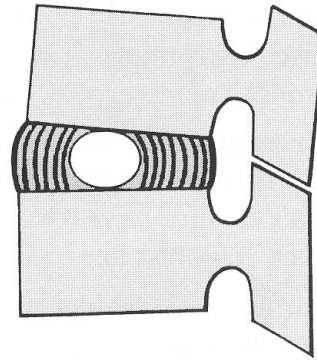
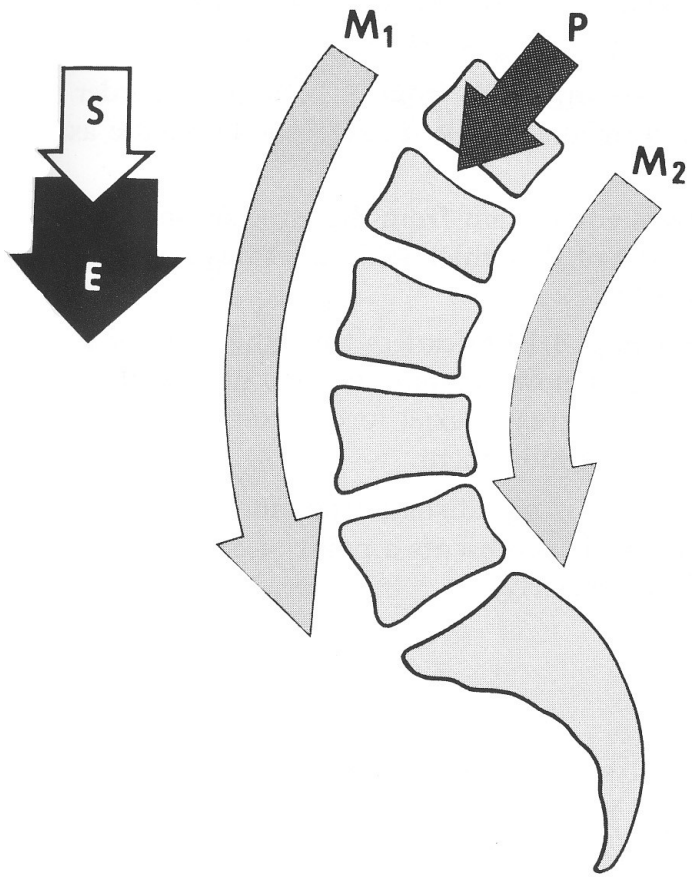
L5-S1
(**flexe trupu**)

- 870 N
- 58 kg.cm⁻²

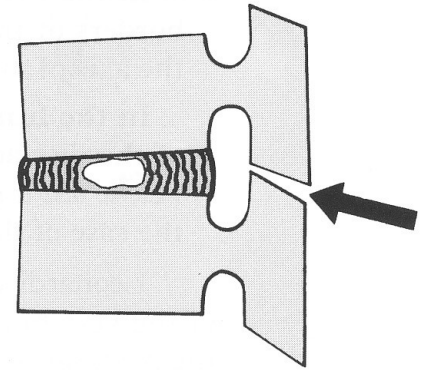
L5-S1
(**napřímení z
flexe**)

- 1740 N
- 107 kg.cm⁻²



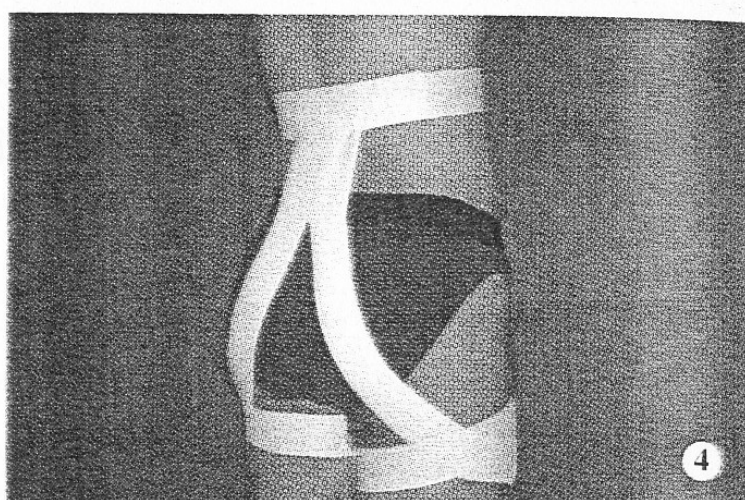
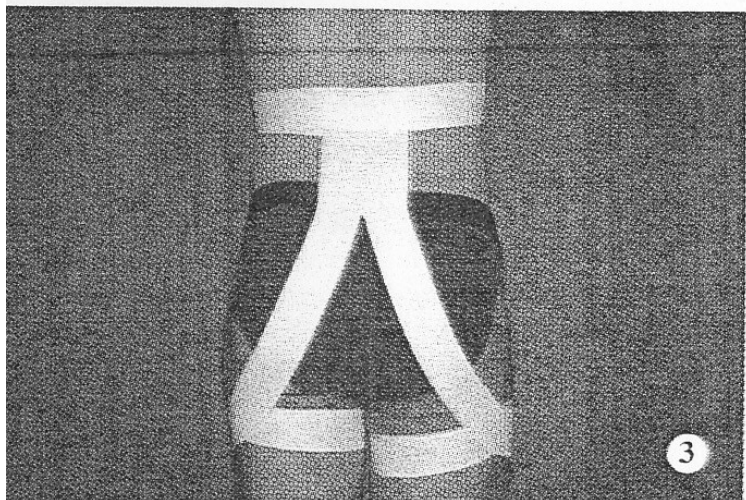
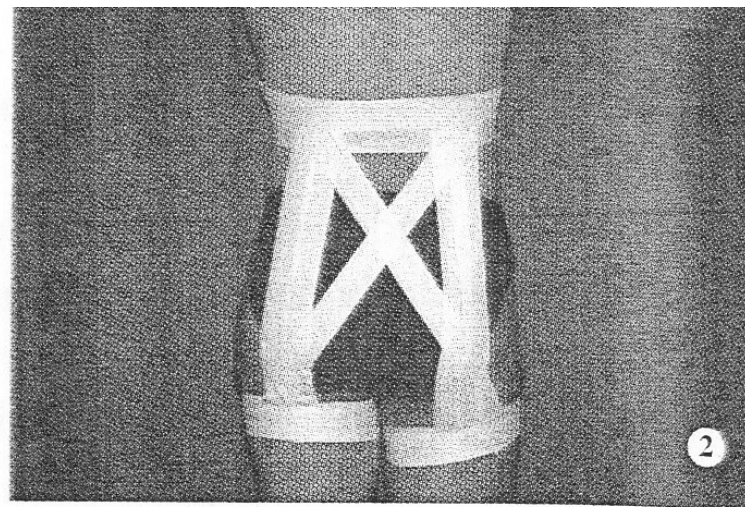
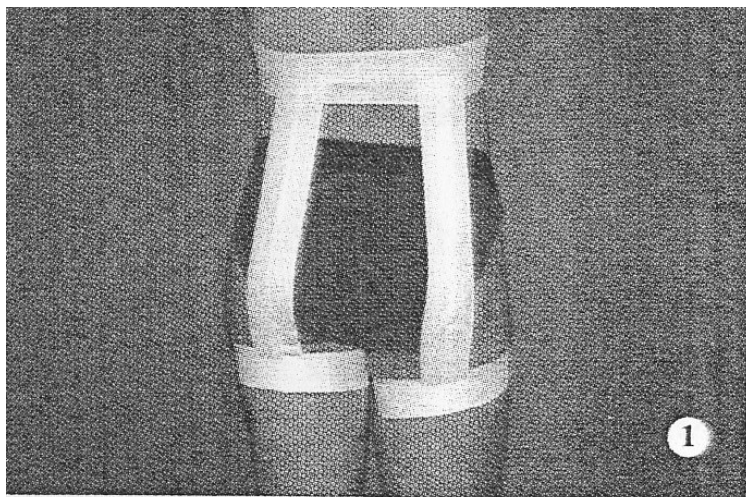


A

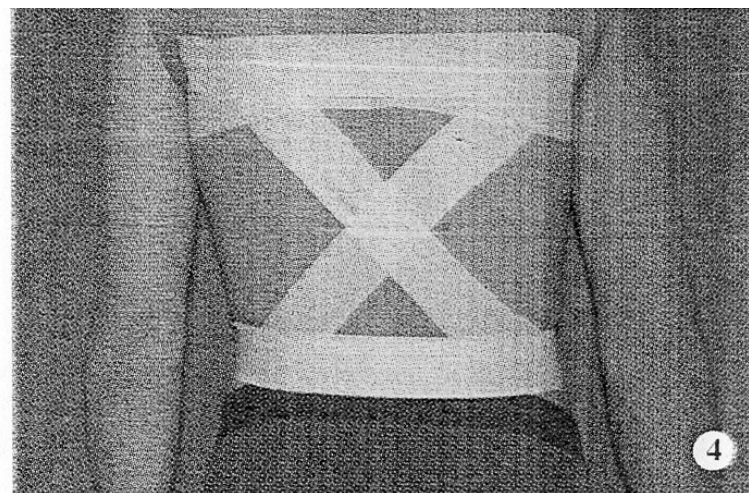
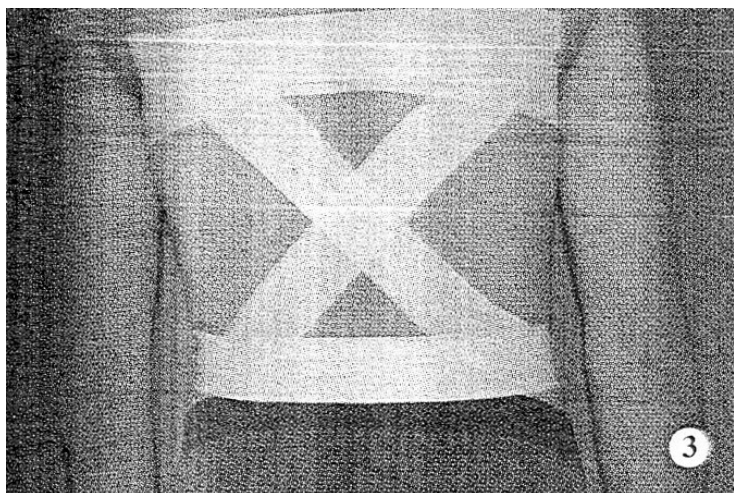
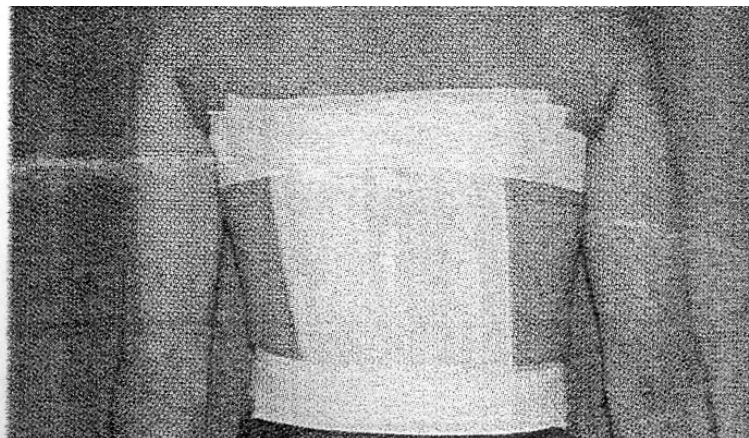


B

TAPING

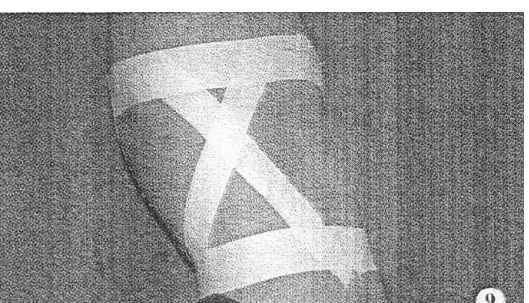
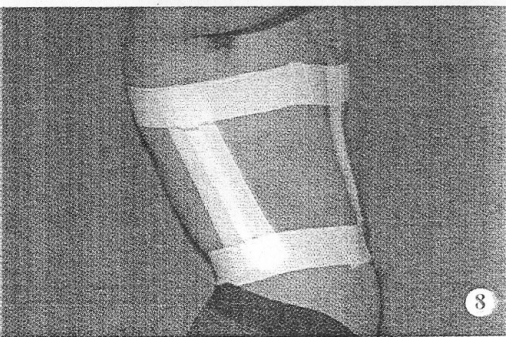
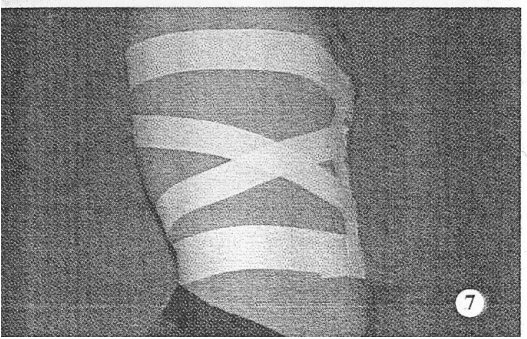
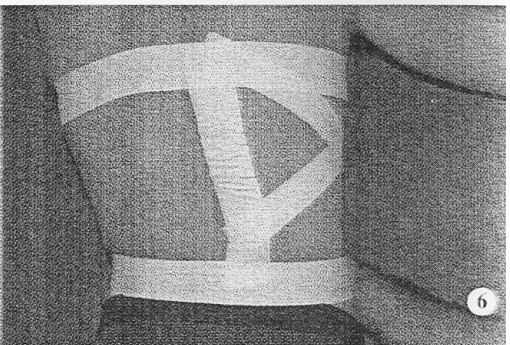
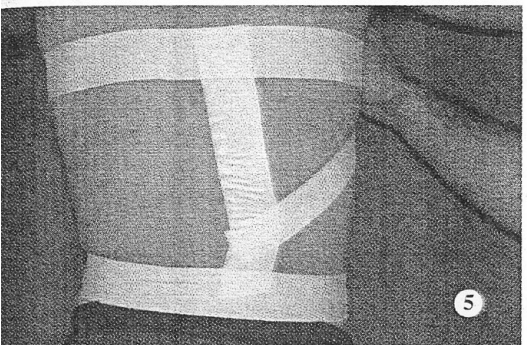
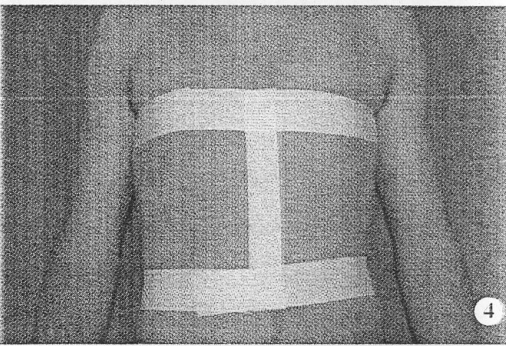
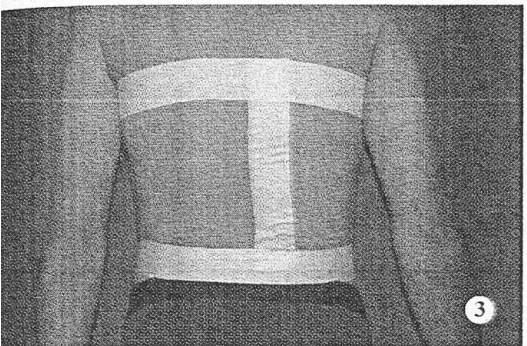
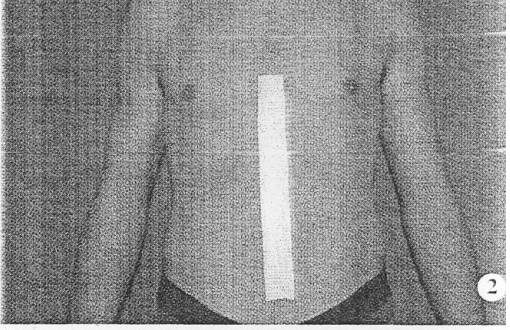
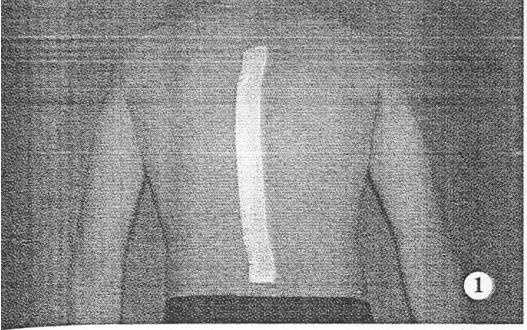


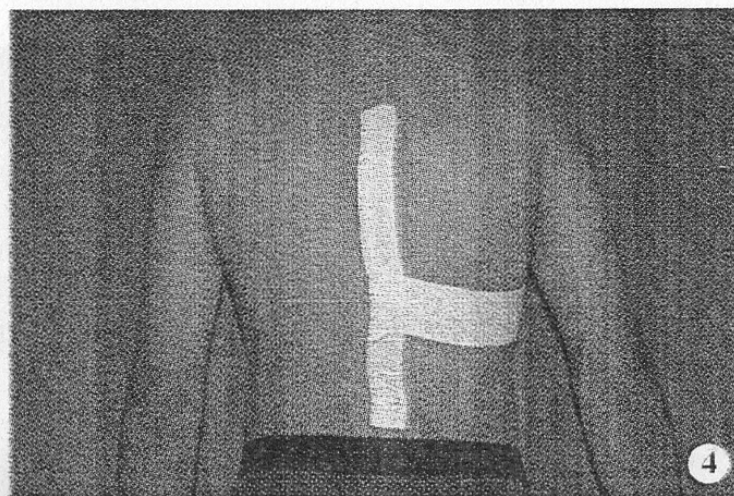
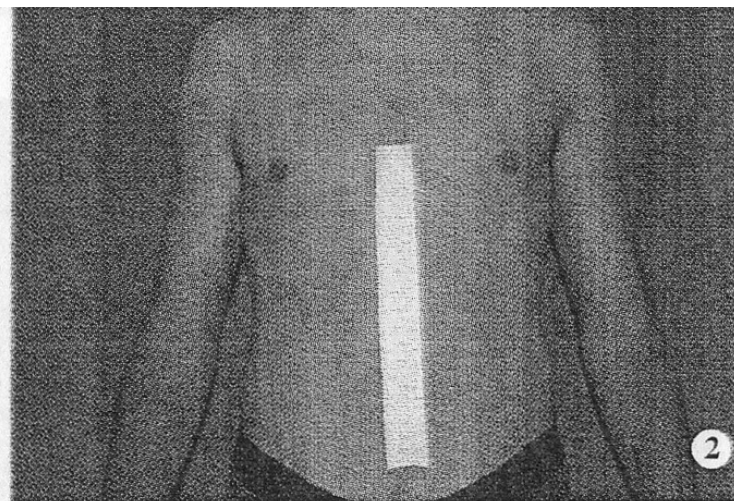
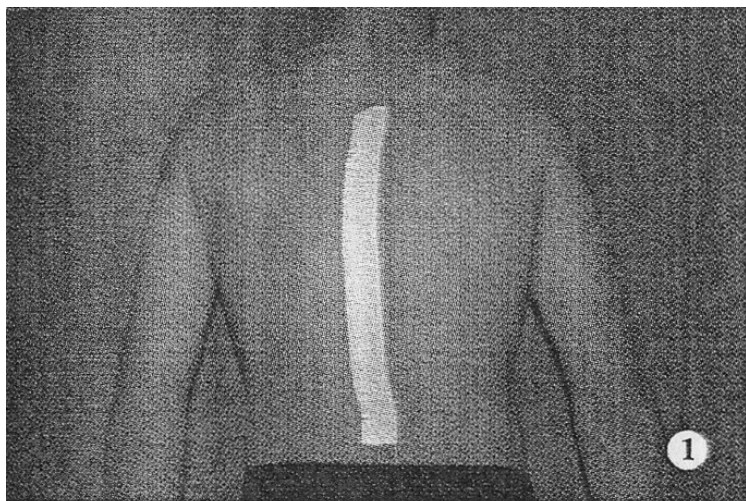
Omezení anteflexe v dolní L páteři



Omezení anteflexe v horní L a Th-L páteři
omezení retroflexe pouze předozadně obráceně

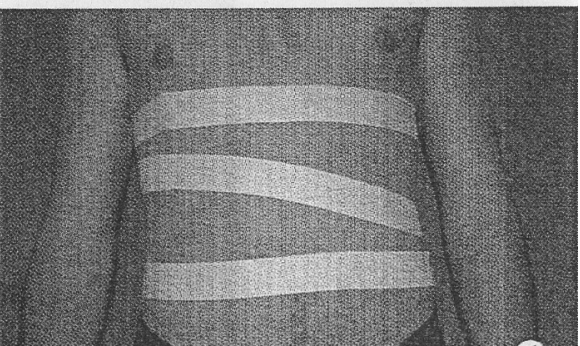
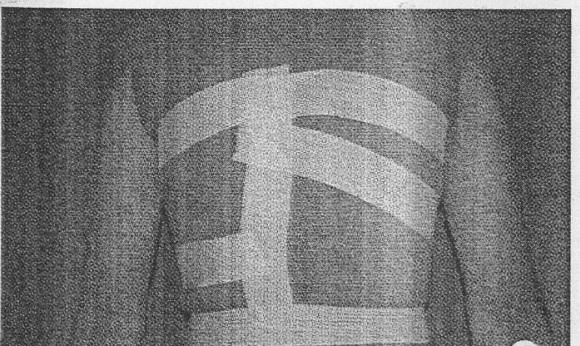
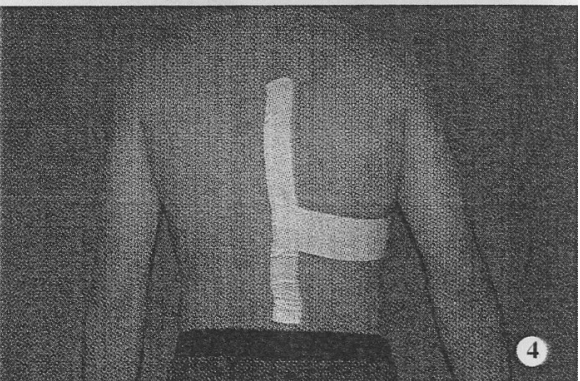
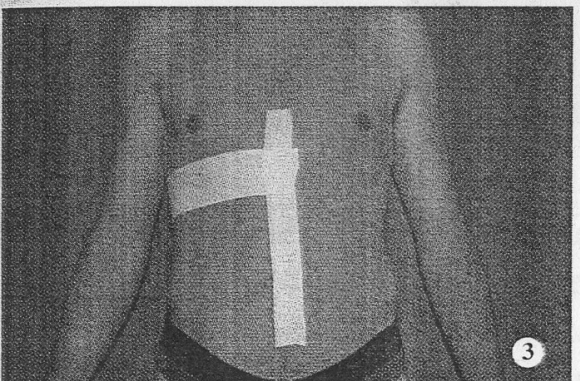
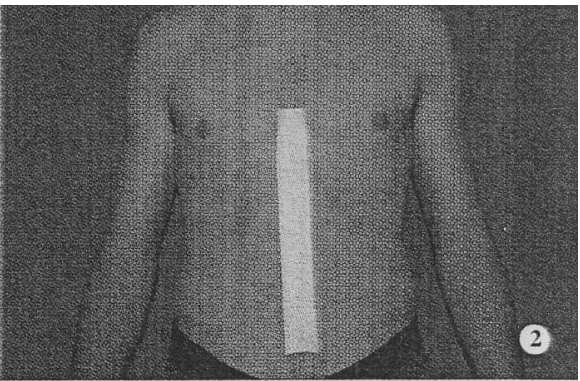
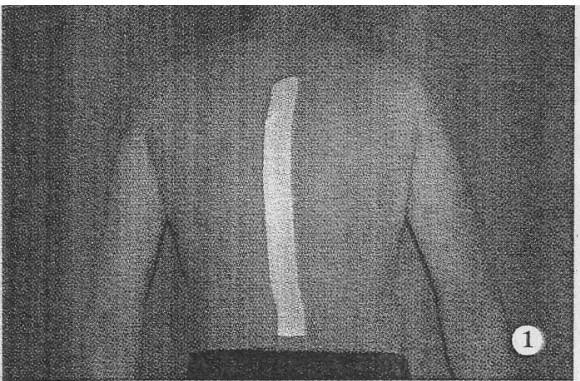
Omezení rotací a inclinací trupu



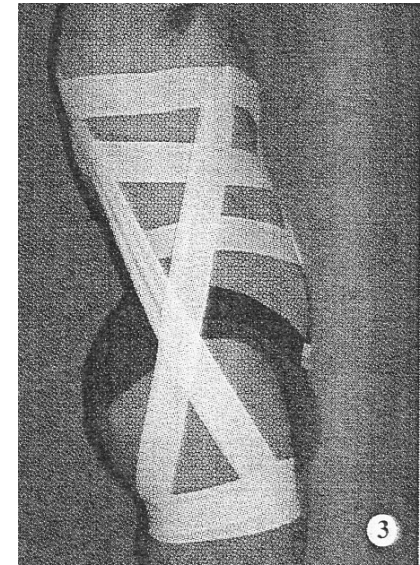
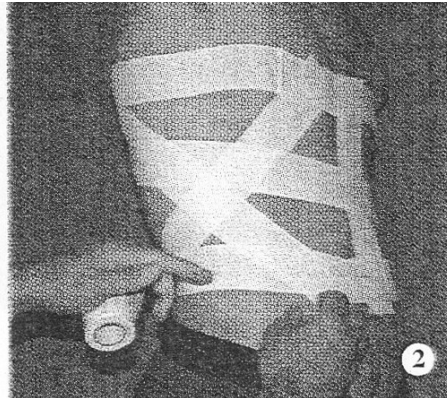
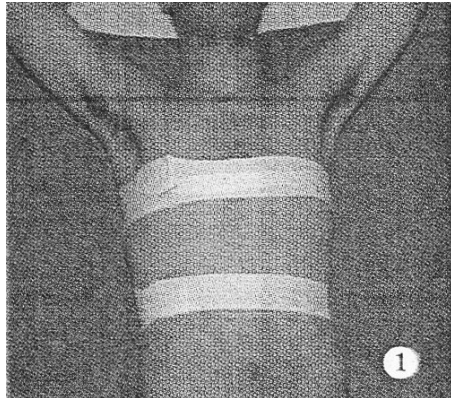


Ovlivnění ventilace

Ovlivnění laterální deviace trupu s rotací



Ovlivnění laterální deviace trupu s rotací



Ovlivnění hyperkifózy

Ovlivnění hyperlordózy

Fixace C-páteře

...