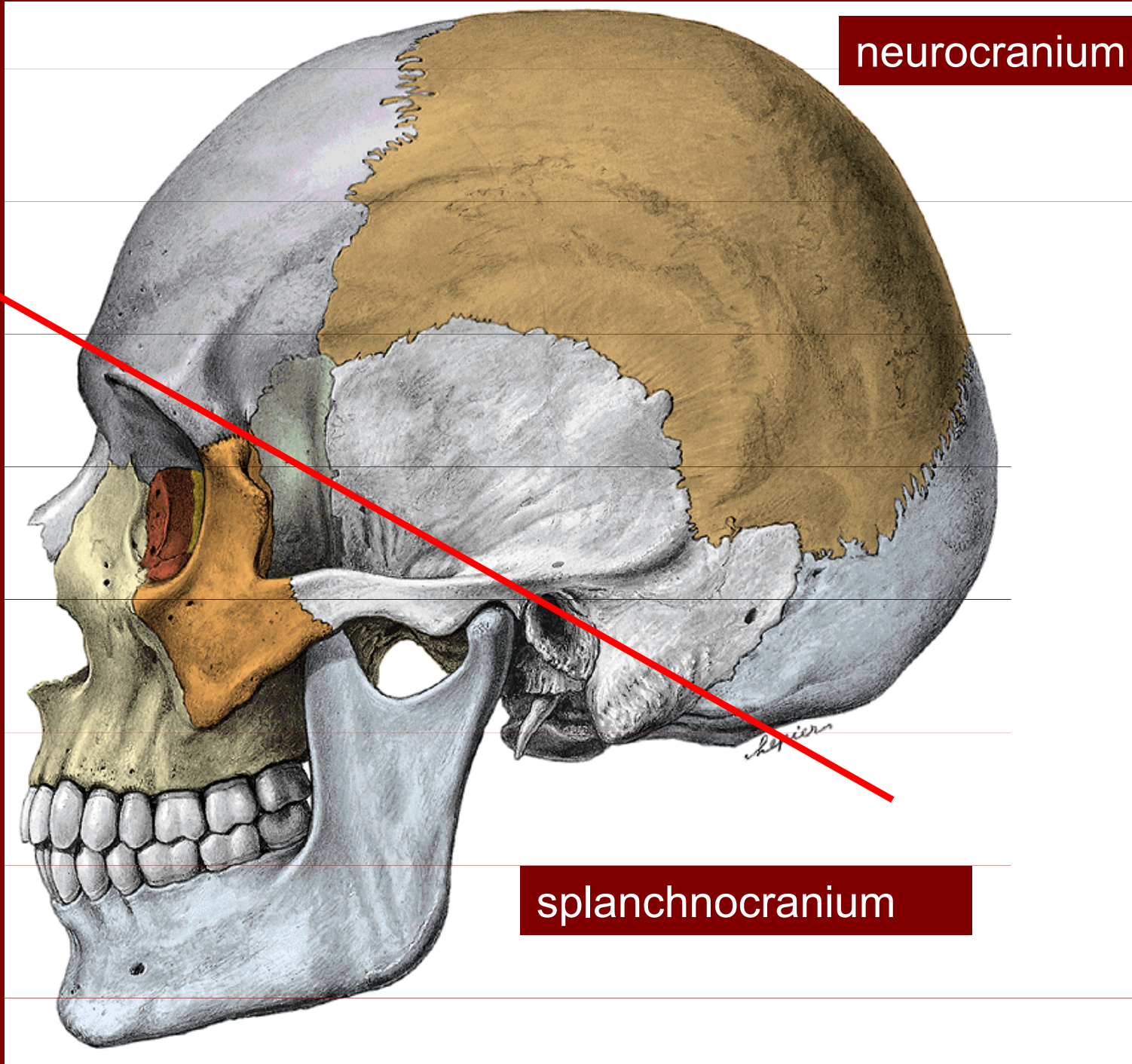


ANATOMIE

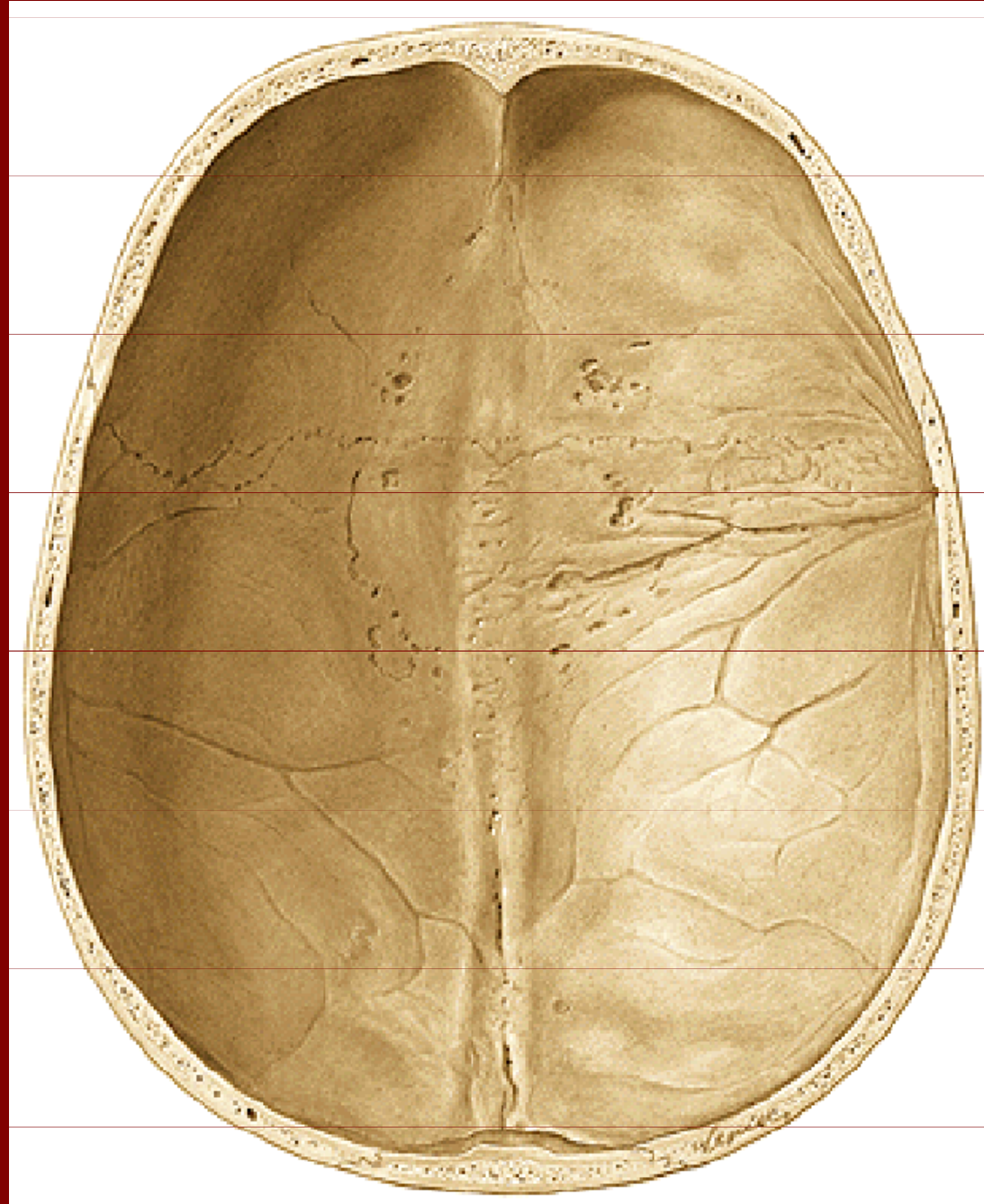
Kosti neurokrania



neurocranium

splanchnocranium

Kalvarie – vnitřní pohled



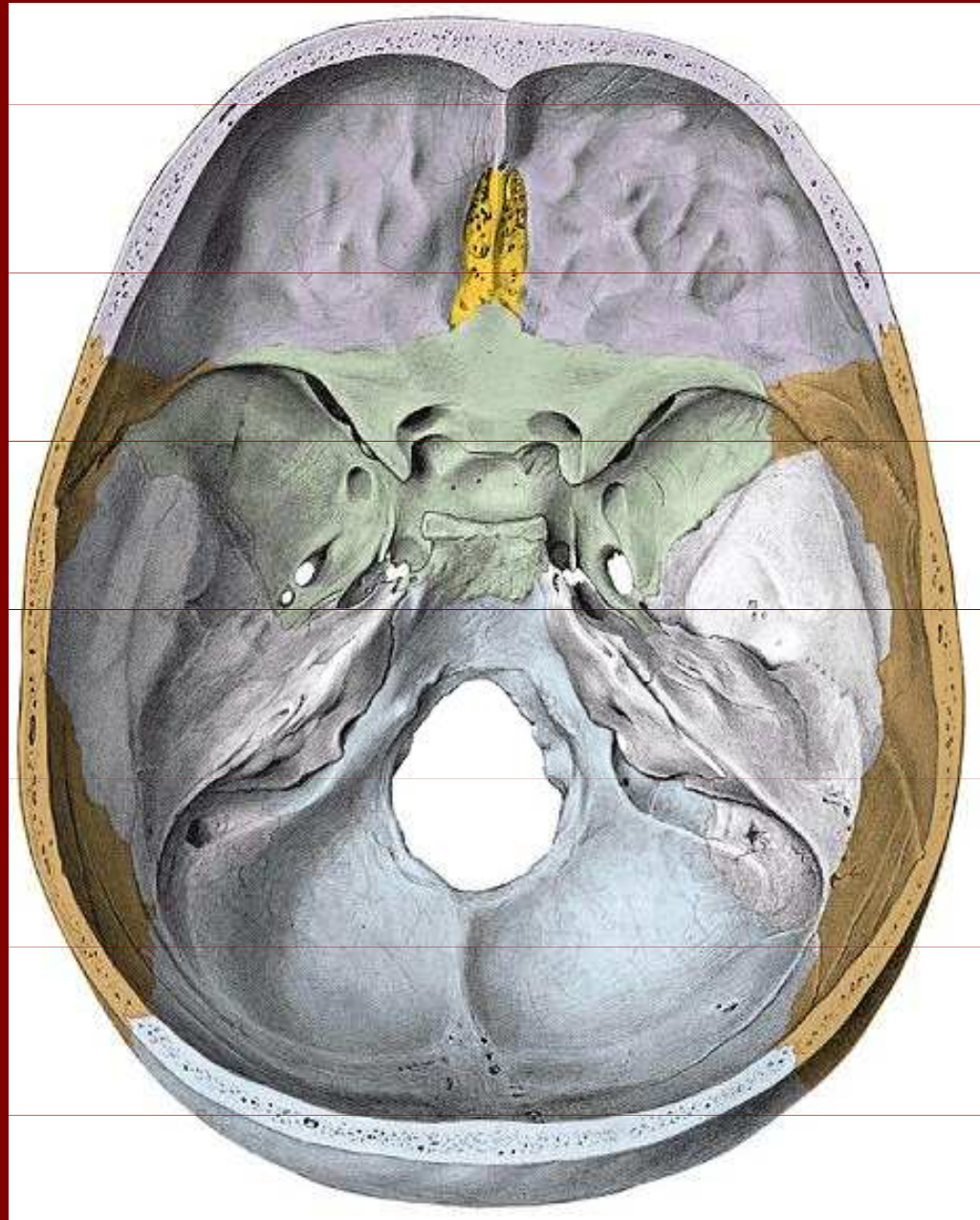
Kalvarie – zevní pohled



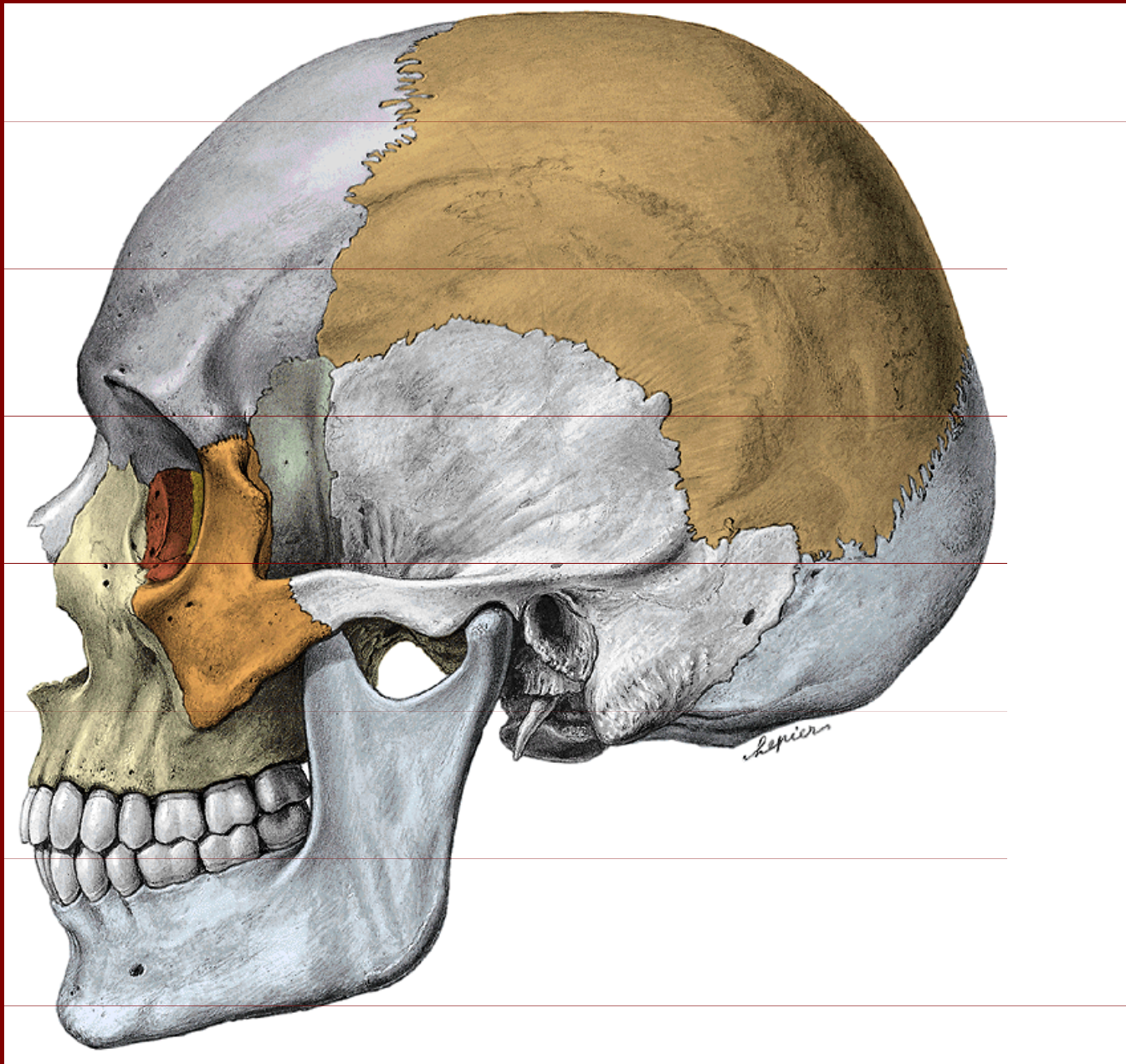
Kosti neurocrania

- Os frontale
- Os parietale (2)
- Os occipitale
- Os sphenoidale
- Os temporale (2)

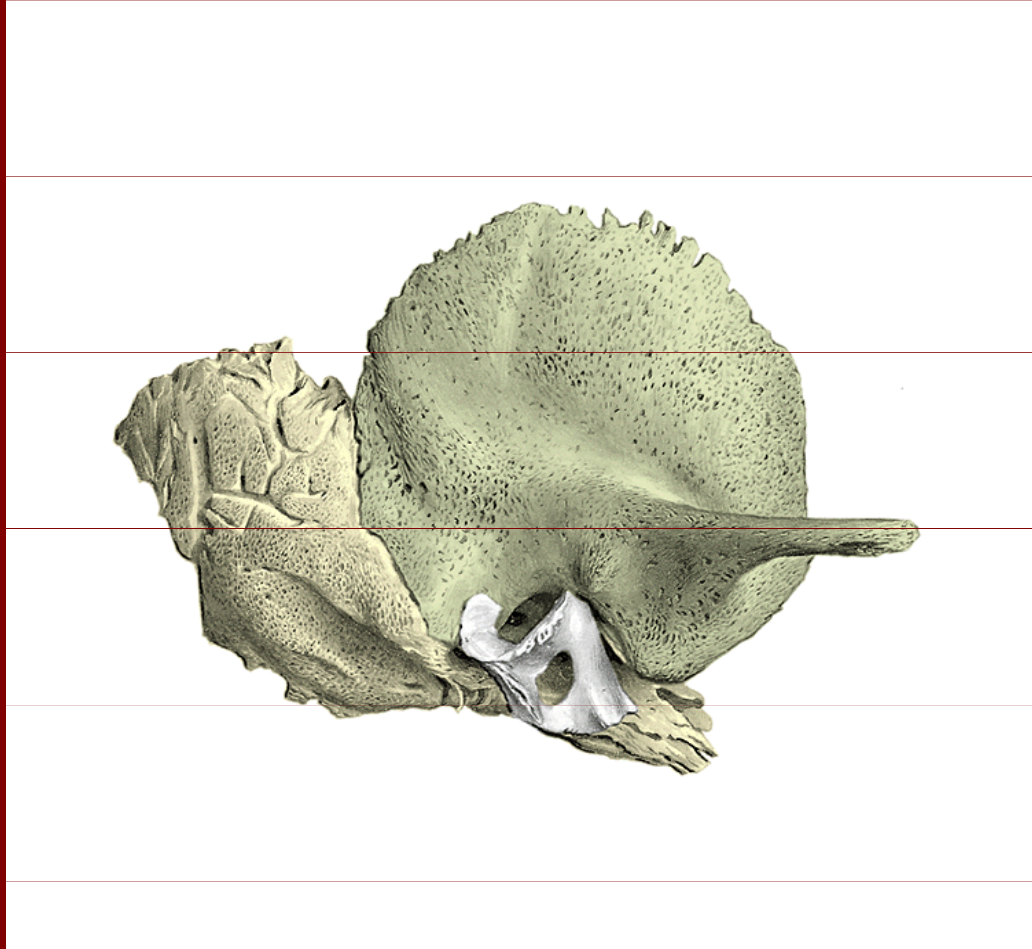
Přehled kostí neurocrania



Přehled kostí neurocrania



Vývoj os temporale



Části seskupené kolem
porus acusticus externus:

Pars squamosa

Pars mastoidea

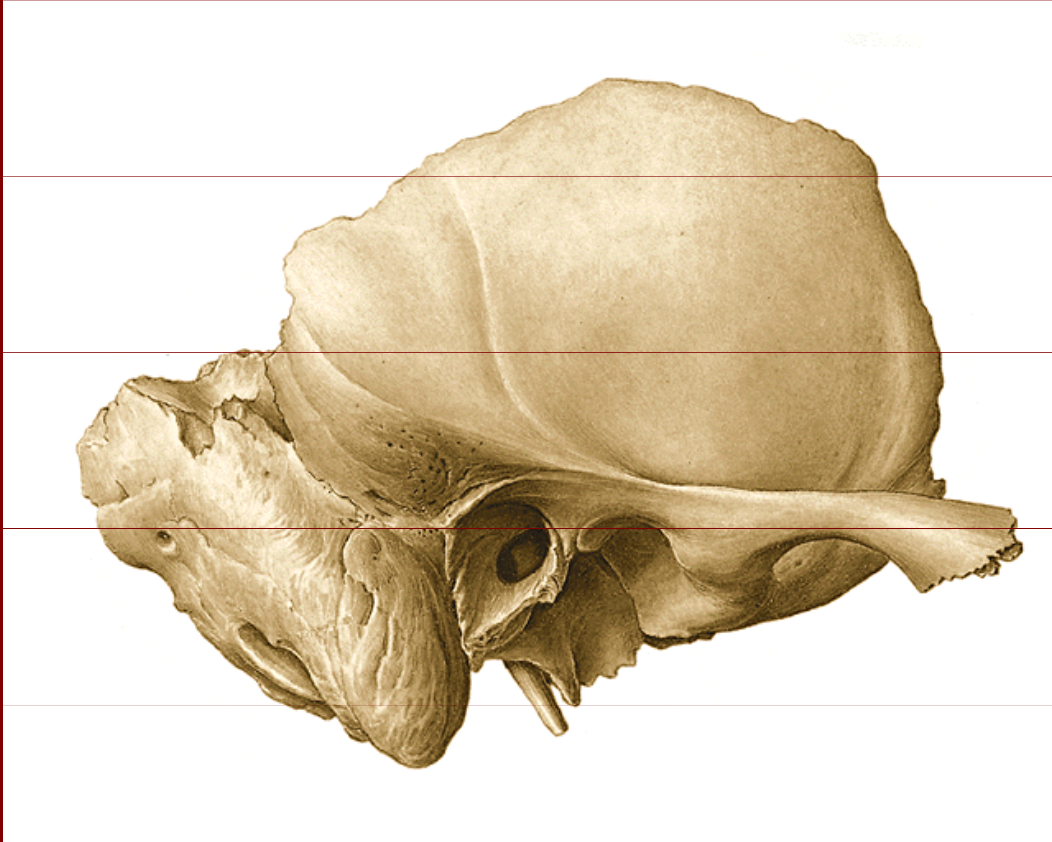
Pars petrosa

Pars tympanica

Pars hyoidea

(processus styloideus)

Os temporale



Squama temporale

Processus zygomaticus ossis temporalis, fossa mandibularis, tuberculum articulare

Processus mastoideus

Incisura mastoidea, sulcus a.occipitalis

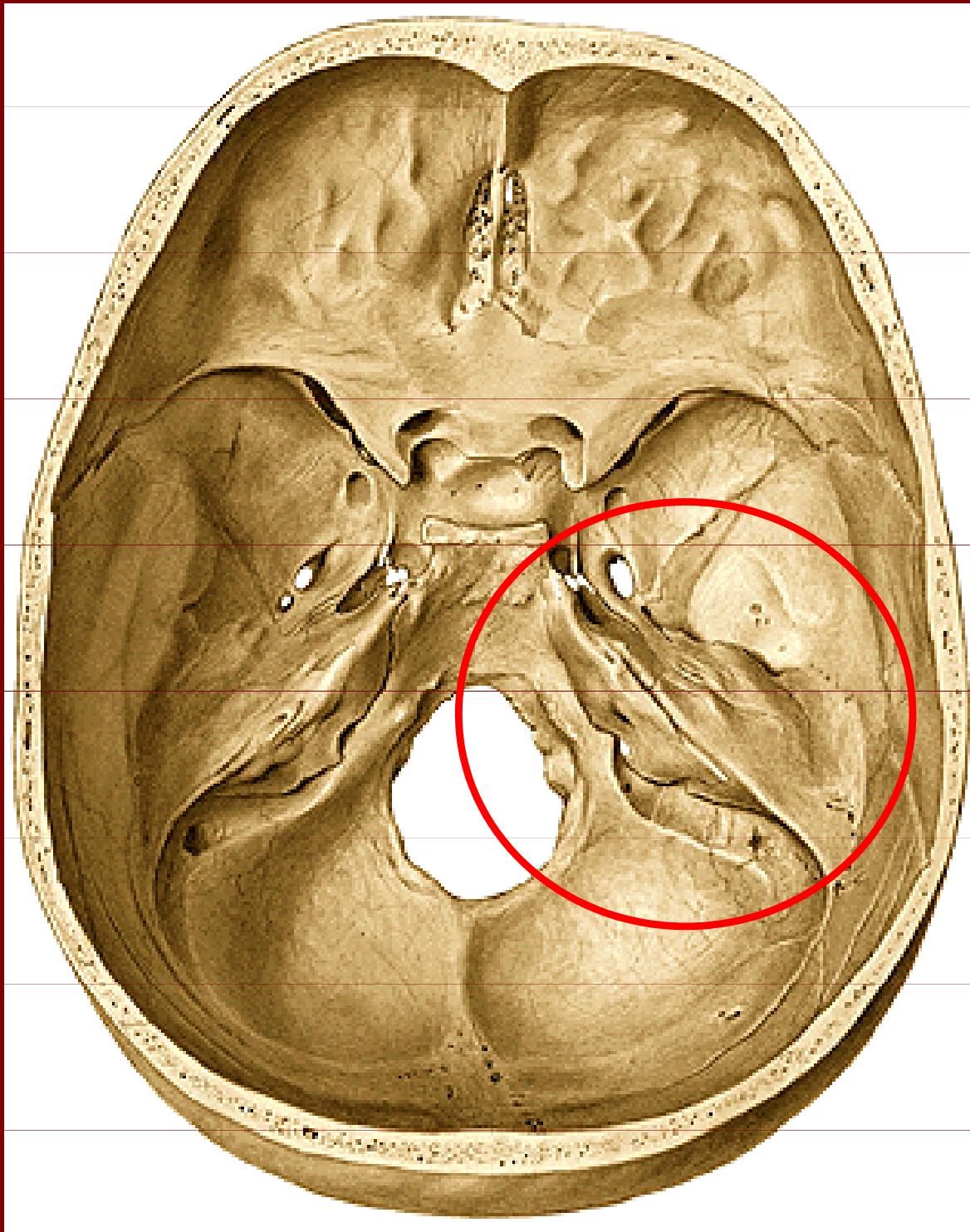
Os tympanicum

Incisura tympanica, sulcus tympanicus

Processus styloideus

Foramen stylomastoideum

Pars petrosa (pyramida)



Pars petrosa:

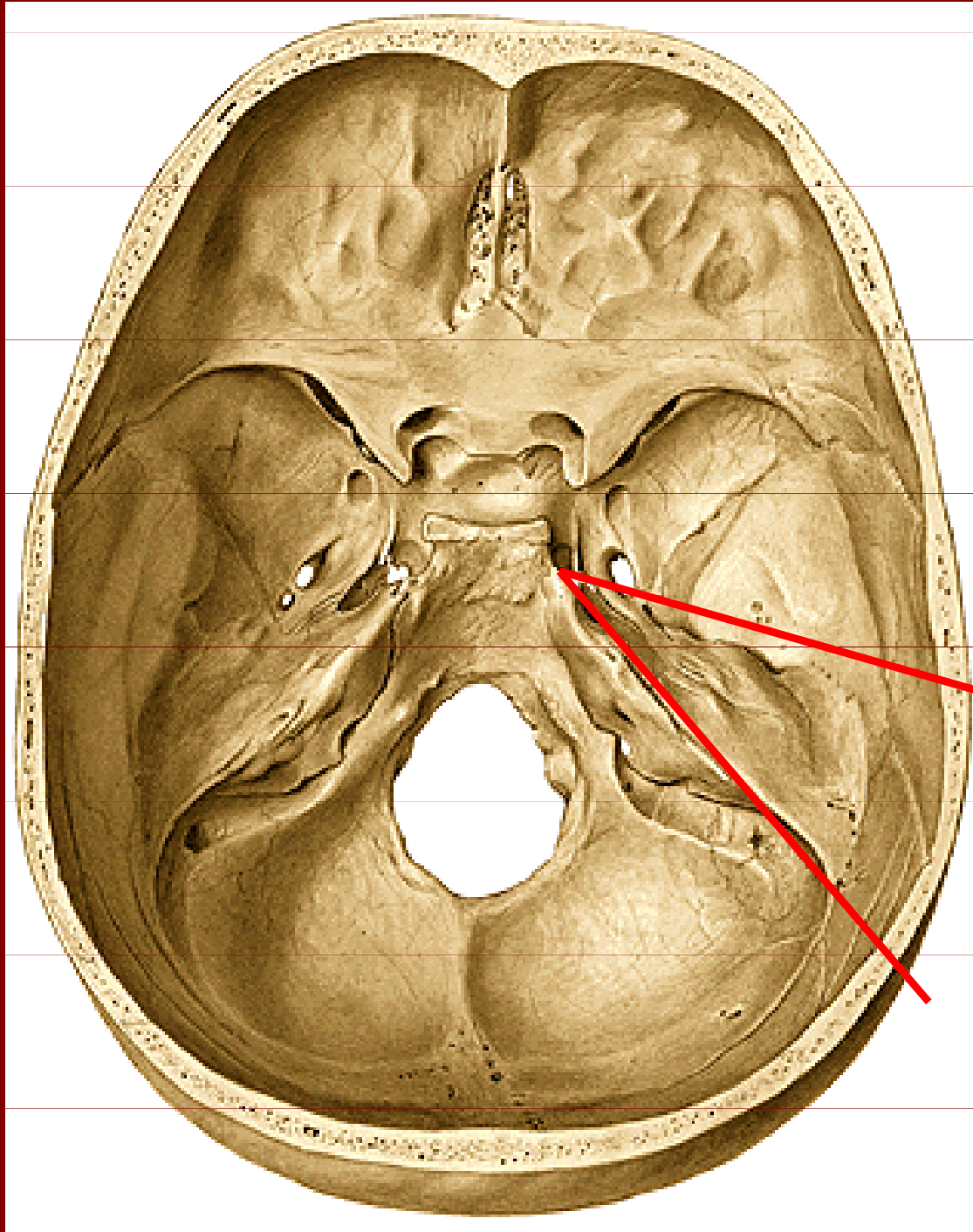
Facies anterior

Facies posterior

Facies inferior

Facies ventrobasalis

Facies anterior



Margo superior

Sulcus sinus petrosi superioris

Foramen lacerum

Impresio trigemini

Canalis caroticus

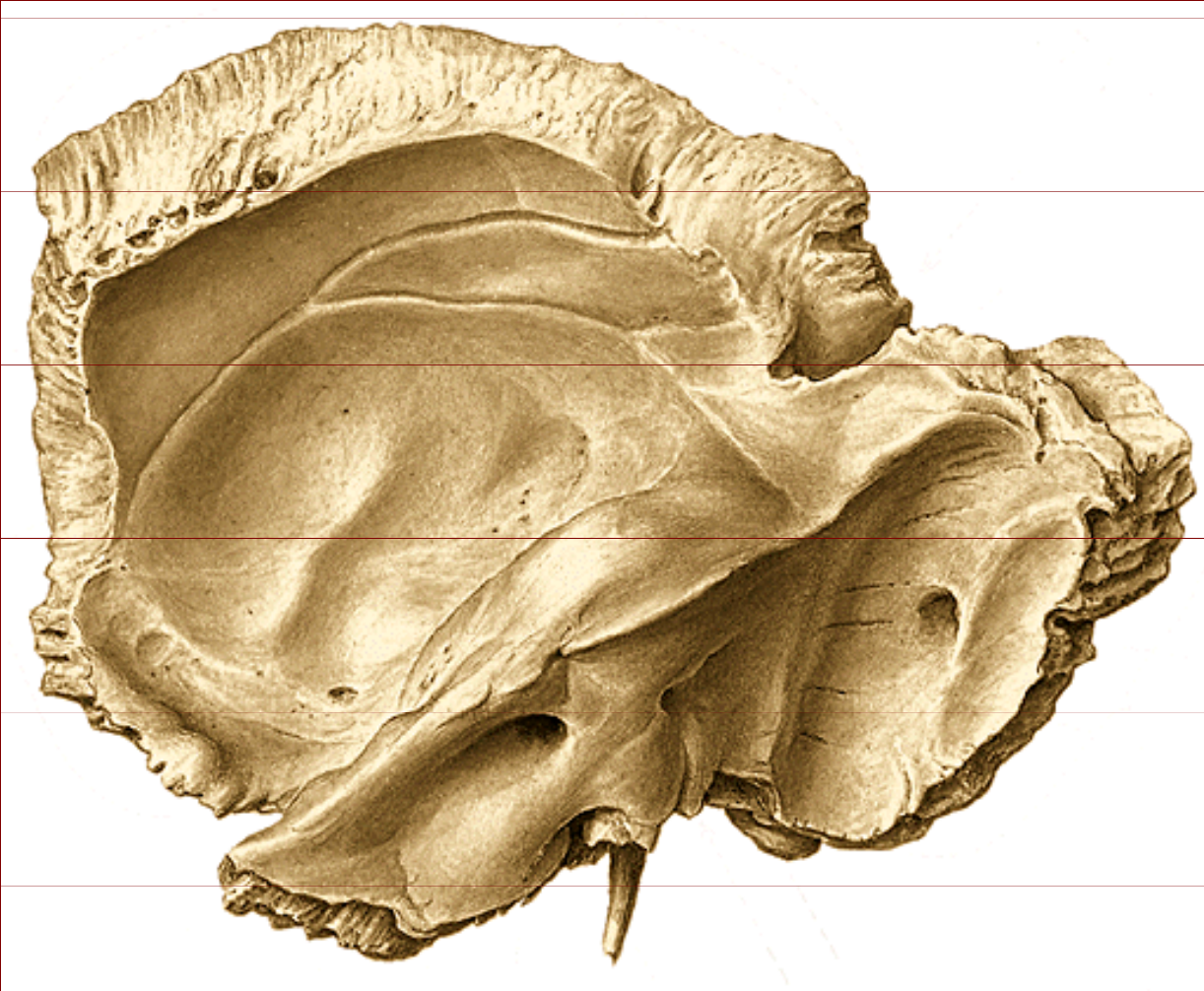
Hiatus canalis nervi petrosi minoris

Hiatus canalis nervi petrosi majoris

Eminentia arcuata

Tegmen tympani

Pars petrosa: facies posterior



Sulcus sinus petrosi inferioris

Porus acusticus internus

Fossa subarcuata

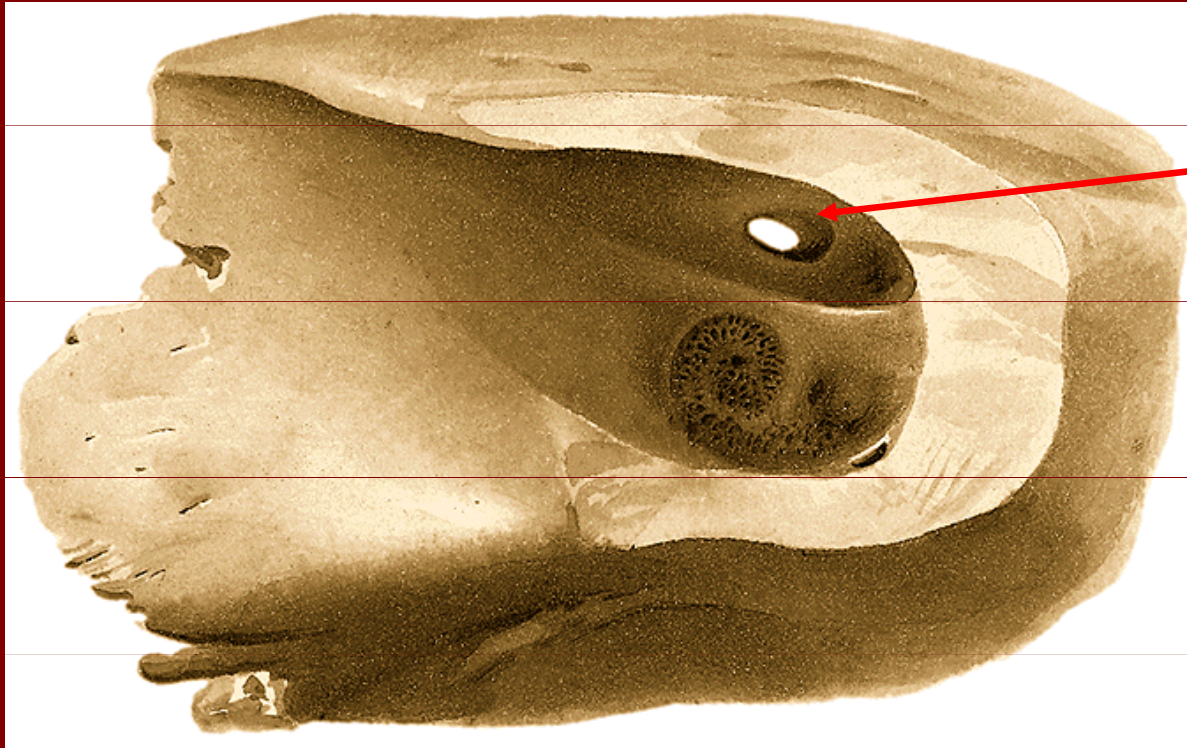
Apertura externa aquaeductus vestibuli

Apertura externa canaliculi cochleae

Incisura jugularis

Sulcus sinus sigmoidei

Fundus meatus acustici interni



Crista transversa

Area nervi facialis

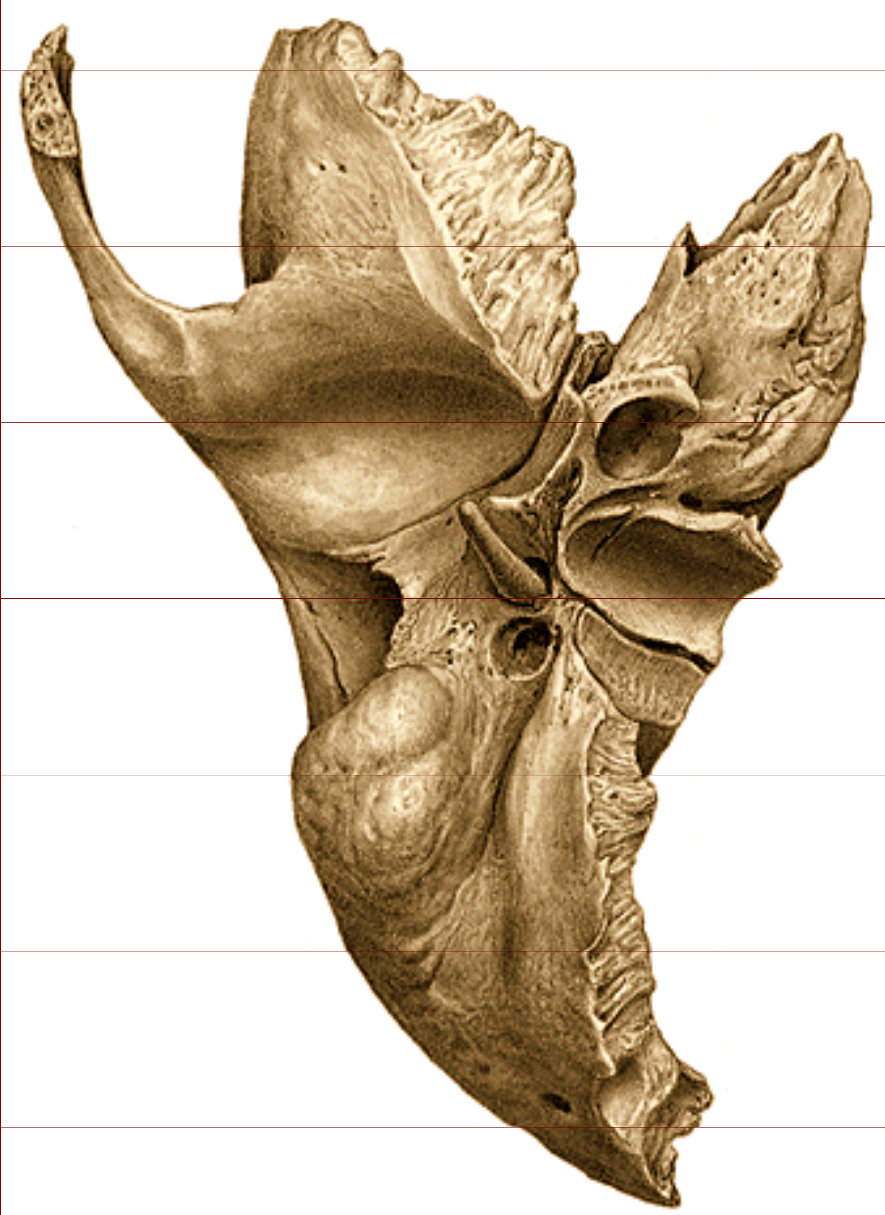
Area vestibularis superior

Area vestibularis inferior

Foramen singulare

Area cochleae

Pars petrosa: facies inferior



Margo posterior

Apex

Apertura externa canalis carotici

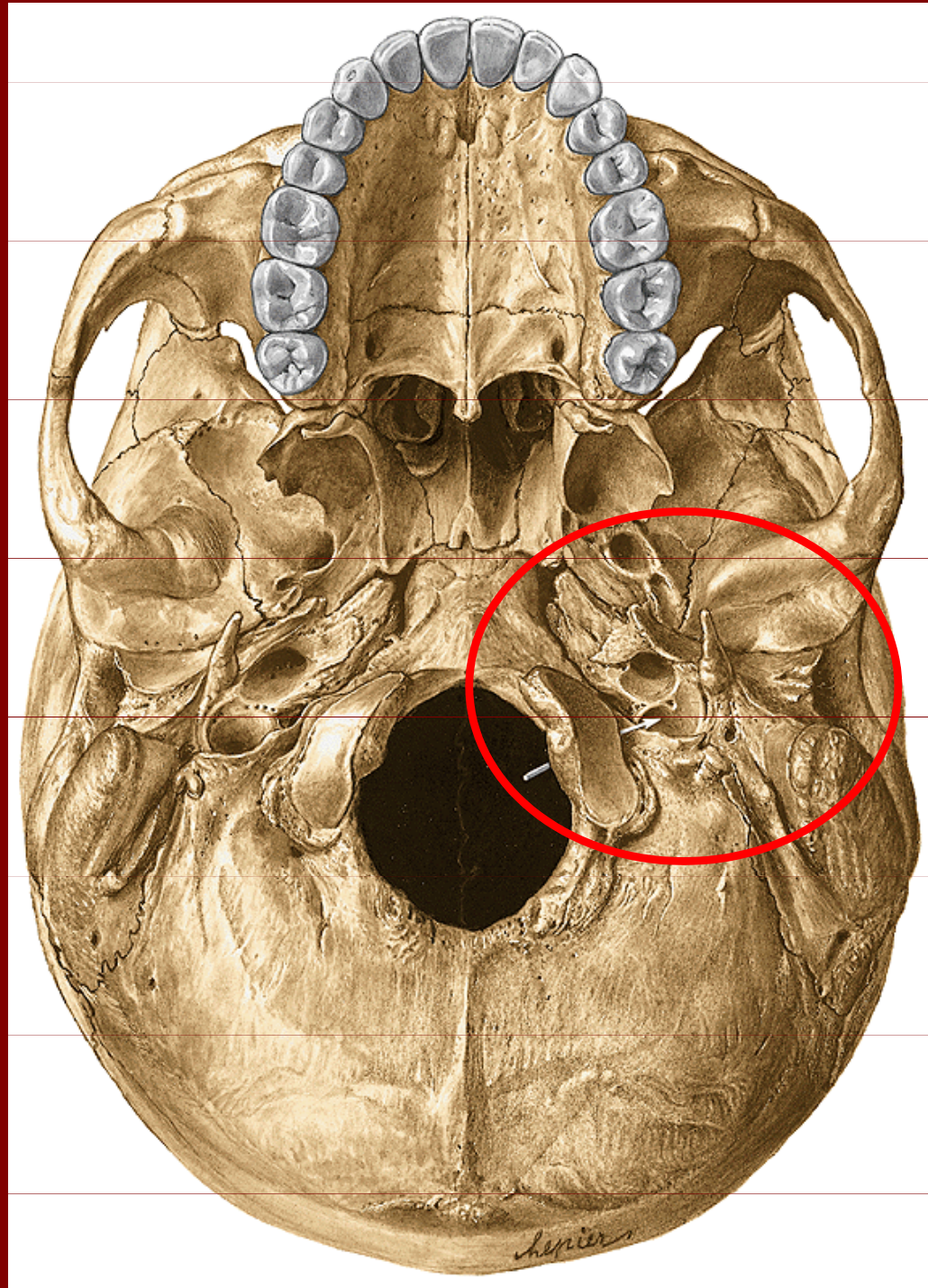
Fossa jugularis

Fossula petrosa

Apertura externa canaliculi tympanici

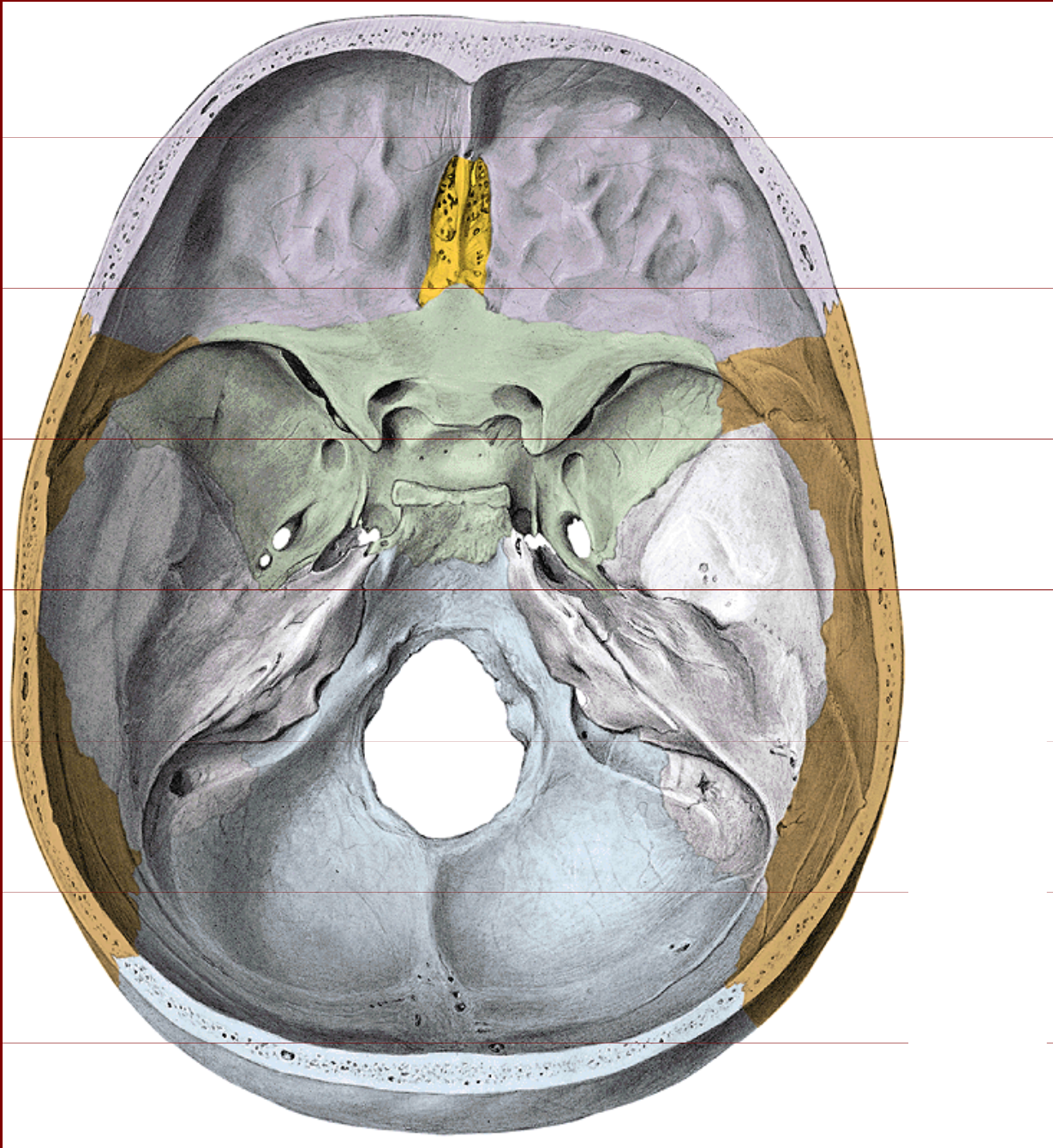
Processus styloideus

Foramen stylomastoideum



**Pars petrosa:
facies inferior**

Os sphenoidale



Corpus

Alae minores

Alae majores

Processus pterygoidei

Os sphenoidale – pohled zepředu



Corpus ossis sphenoidalis

Sinus sphenoidalis

Crista sphenoidalis

Rostrum sphenoidale

Apertura sinus sphenoidalis

Canalis pterygoideus

Fissura orbitalis superior

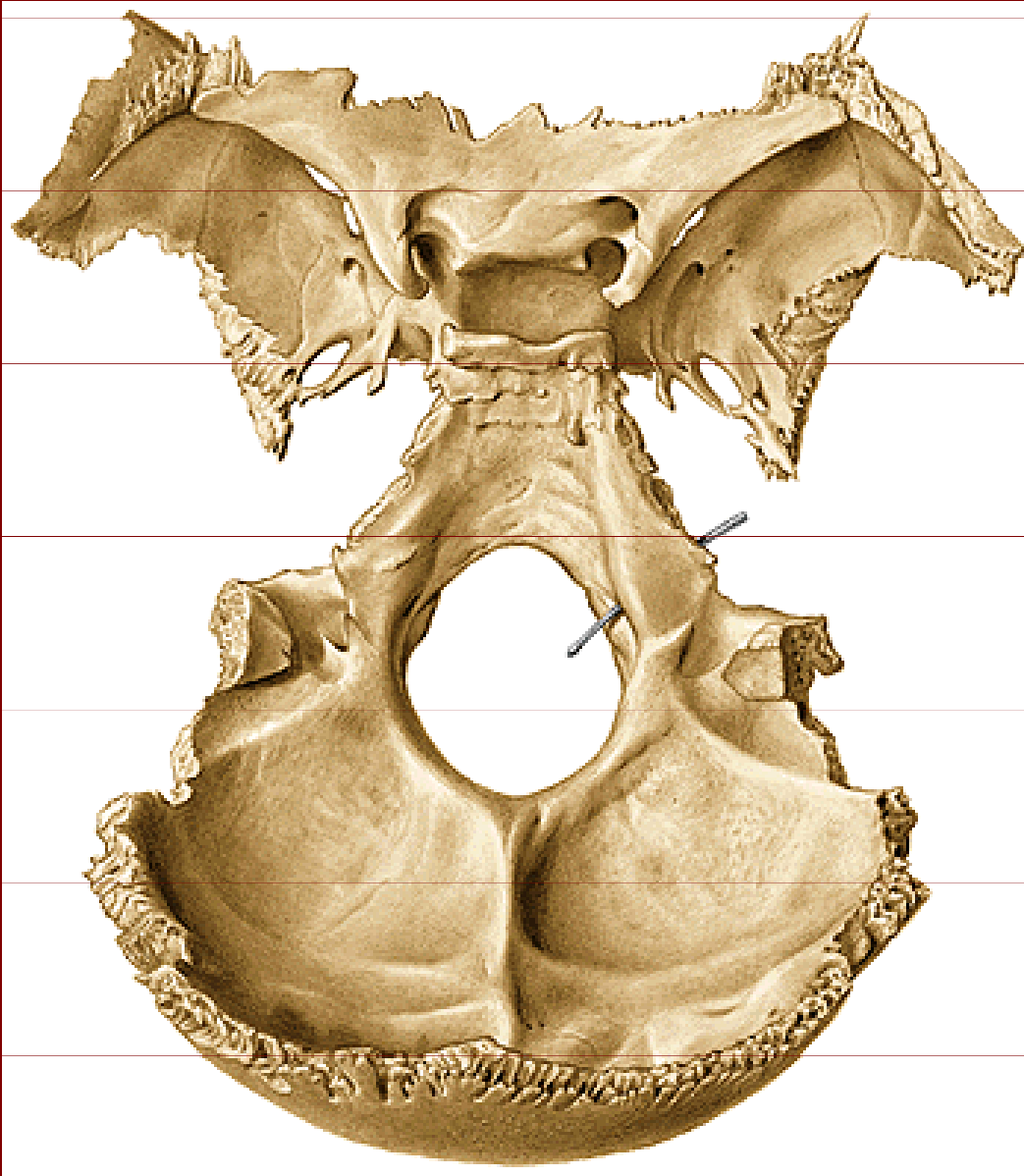
Facies orbitalis

Facies temporalis

Facies infratemporalis

Facies sphenomaxillaris

Os sphenoidale – pohled shora



Alae minores

Processus clinoides anterior

Sulcus chiasmatis = nervi optici

Tuberculum sellae

Processus clinoides medius

Sella turcica

Fossa hypophyseos

Dorsum sellae

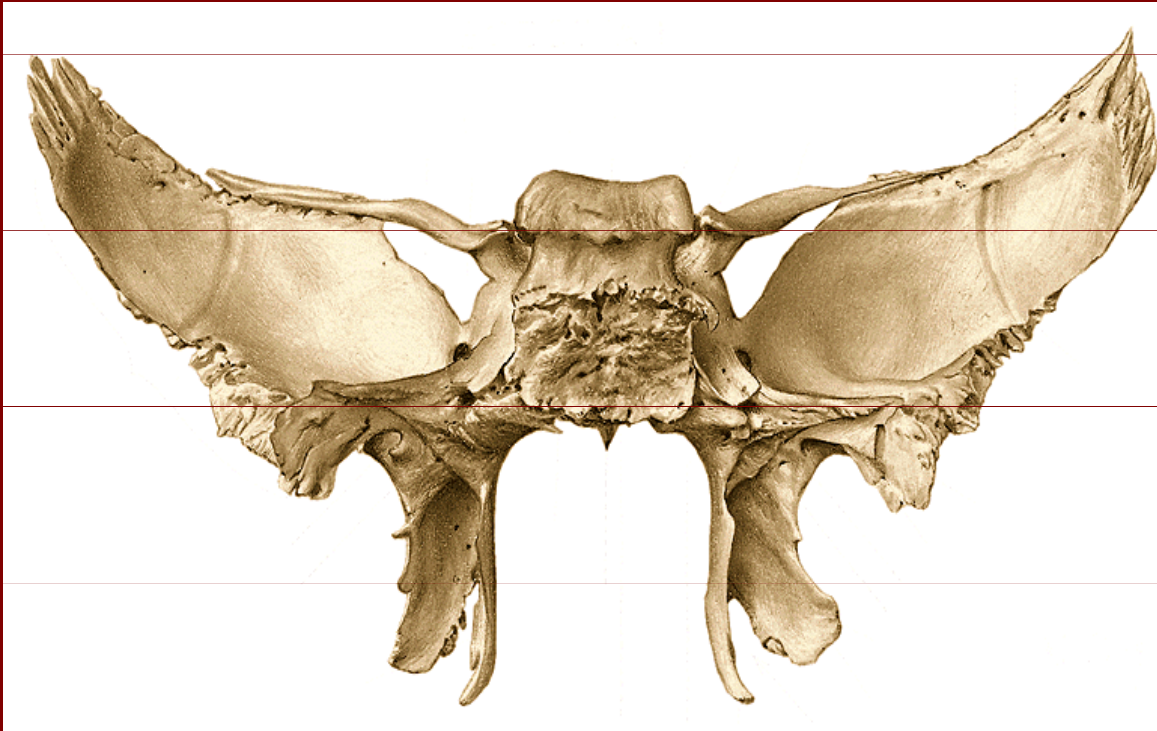
Processus clinoides posterior

Foramen rotundum

Foramen ovale

Foramen spinosum

Os sphenoidale – pohled zezadu



Alae minores

Fissura orbitalis superior

Alae majores - facies
cerebralis

Tuberculum selae

Sulcus caroticus

Lingula sphenoidalis

Processus pterygoideus
medialis et lateralis

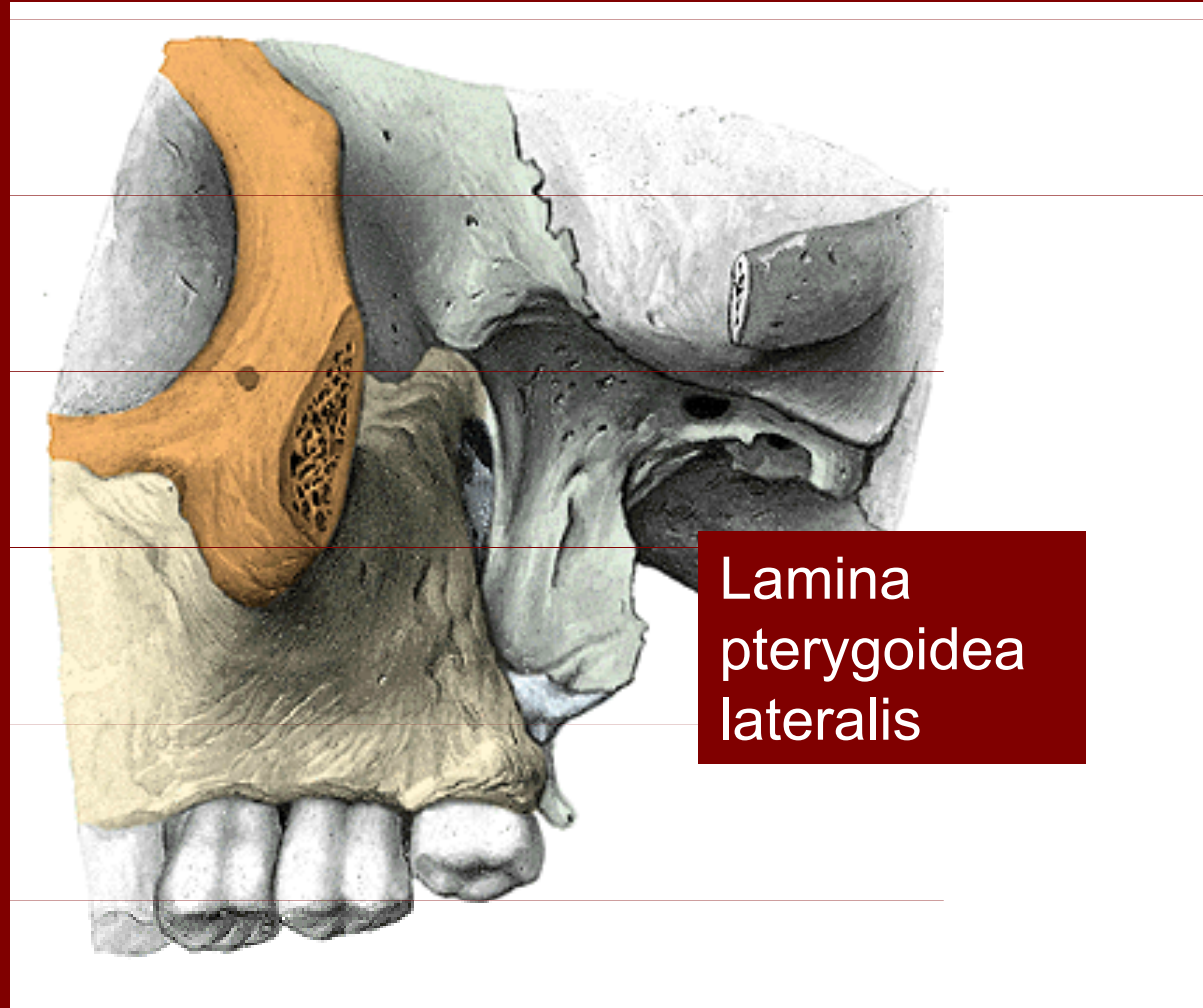
Hamulus pterygoideus

Fossa pterygoidea

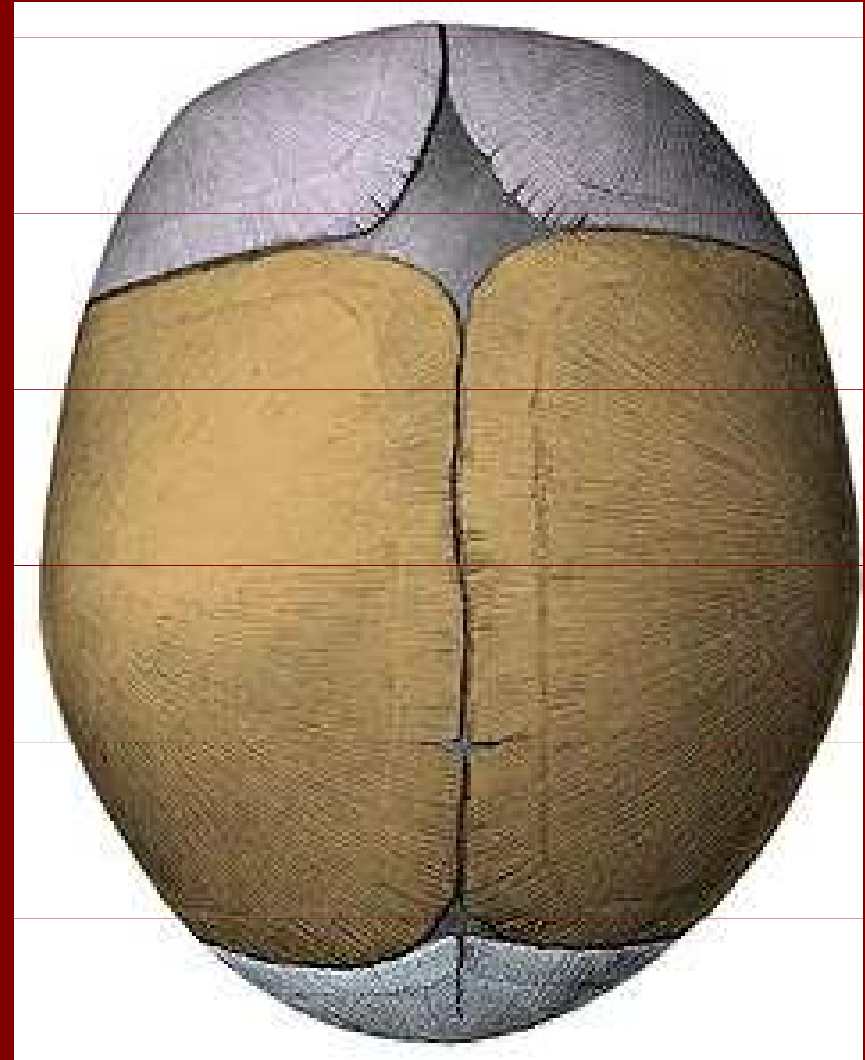
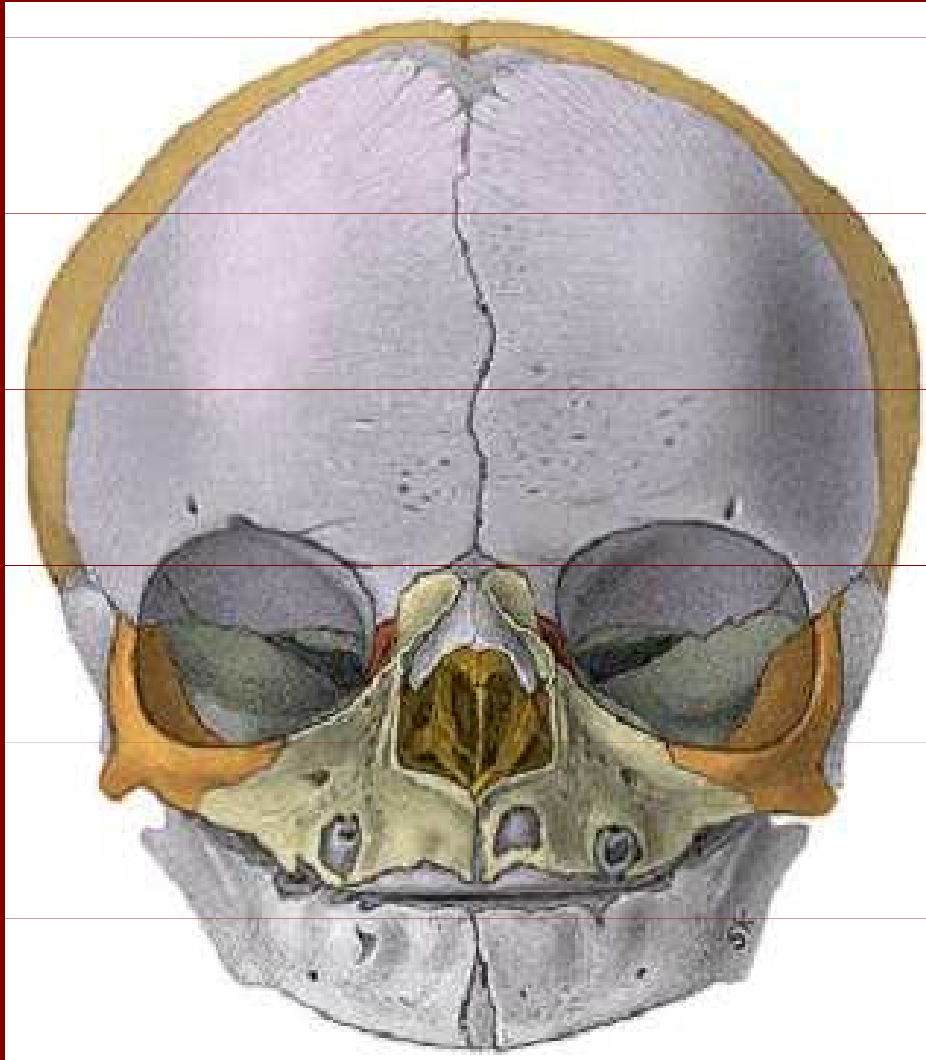
Fossa scaphoidea

Incisura pterygoidea

Fossa infratemporalis

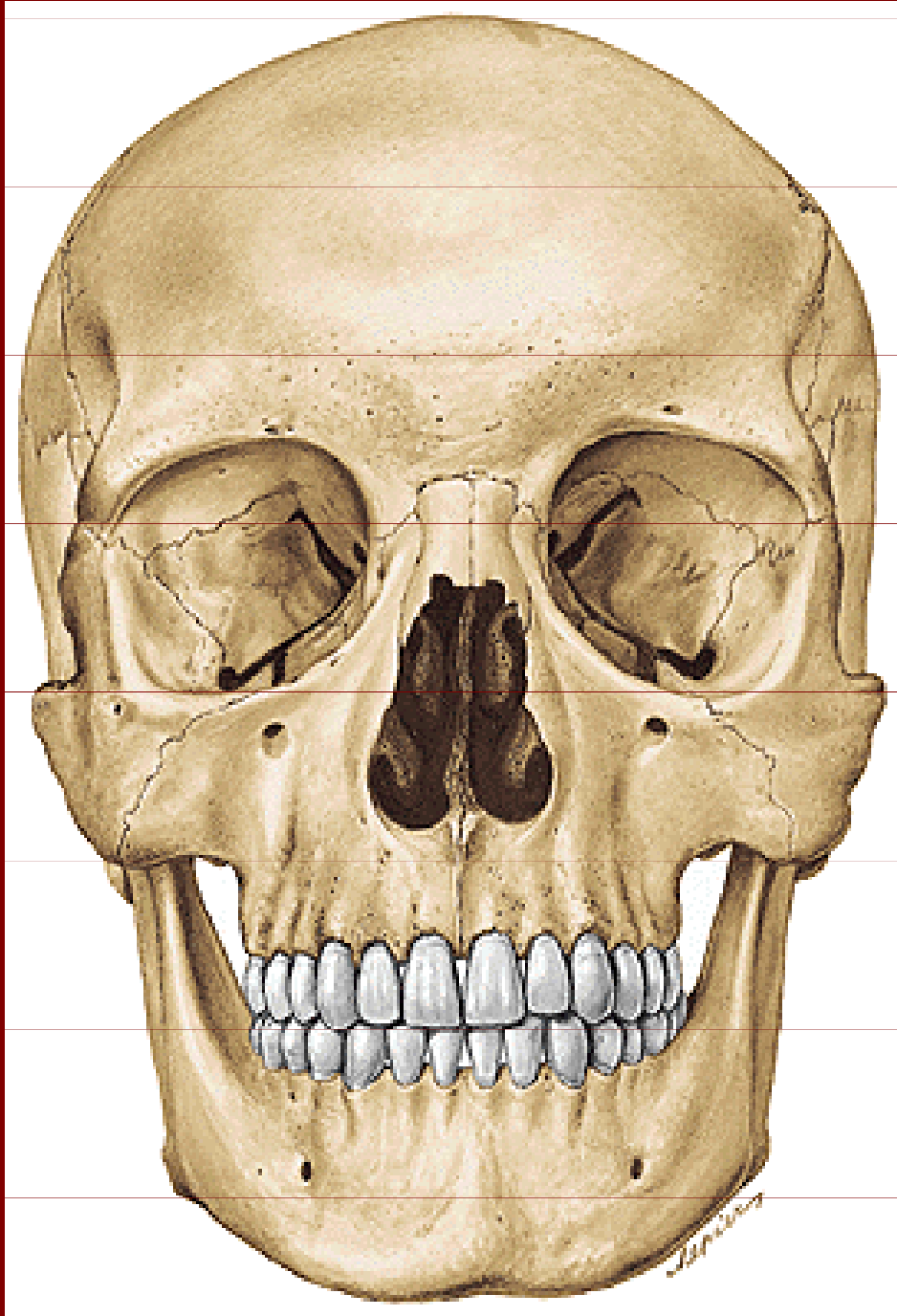


Os frontale - vývoj



8% lidí má šev i v dospělosti = sutura metopica

Os frontale

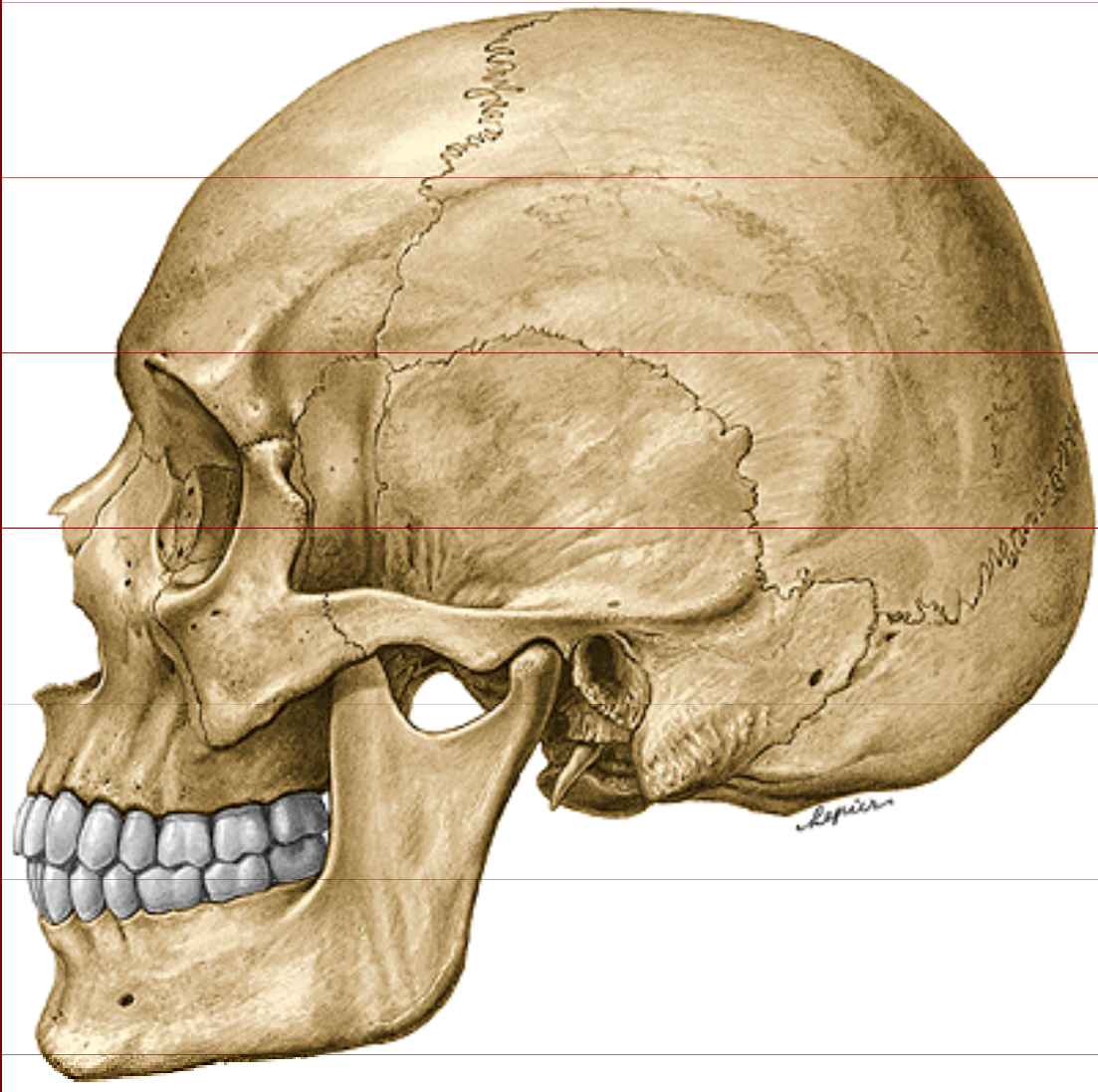


Squama frontalis

Pars nasalis

Partes orbitales

Os frontale



Processus zygomaticus

Margo sphenoidalis

Margo parietalis

Sutura coronalis

Linea temporalis superior

Os frontale – squama

Facies externa



Tubera frontalia

Arcus superciliares

Glabella

Margo supraorbitalis

Incisura frontalis

Incisura supraorbitalis

(nebo foramina...)

Sinus frontalis

Os frontale



Facies interna:

Sulcus sinus sagitalis superior

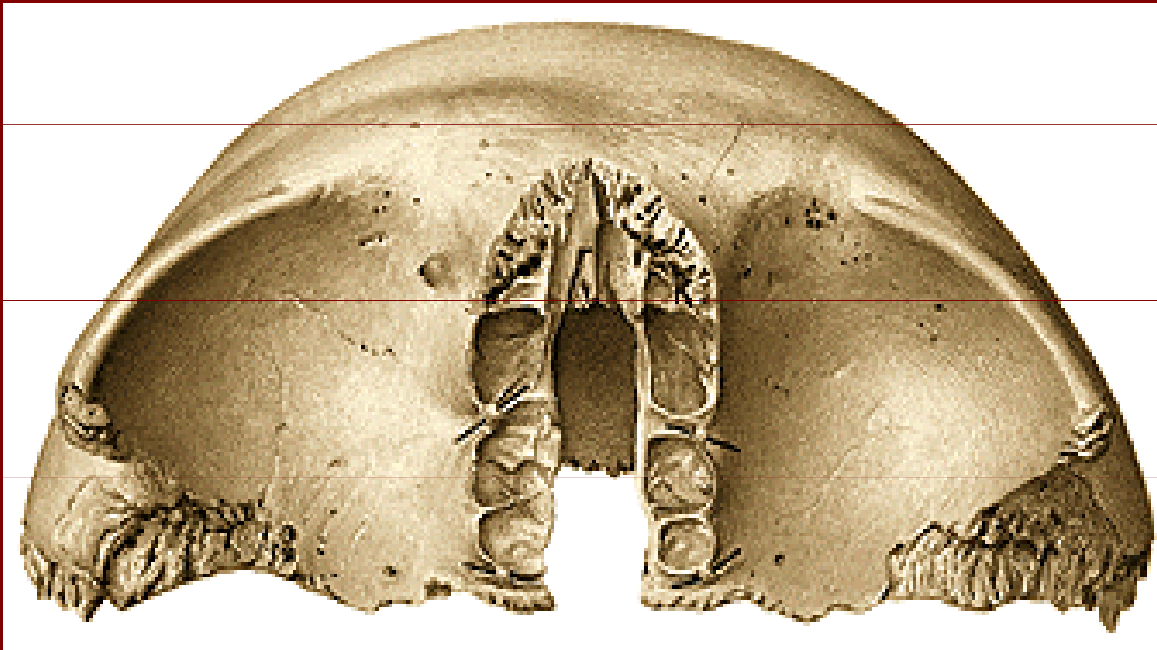
Crista frontalis

Foramen caecum

Juga cerebraalia

Impressiones gyrorum

Os frontale – pars orbitalis et nasalis



Margo nasalis

Spina nasalis ossis frontalis

Foveolae ethmoidales

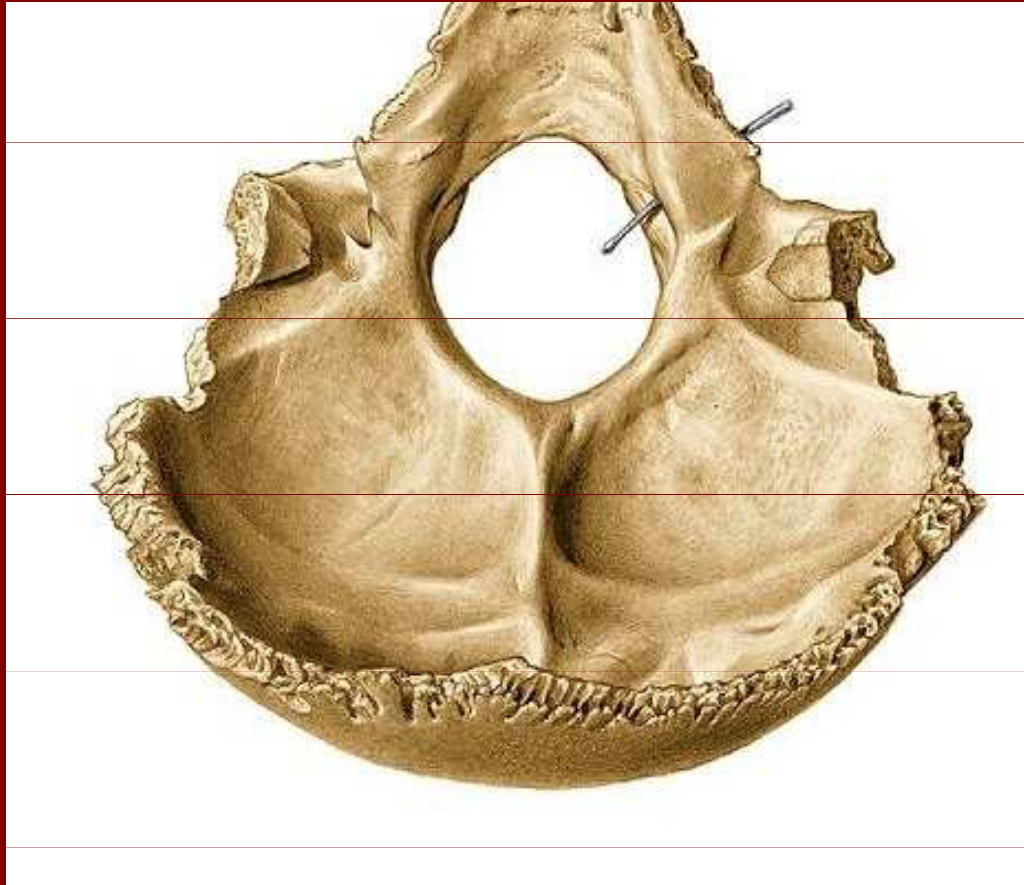
Foramen ethmoidale anterius

Foramen ethmoidale
posterius

Fovea x spina trochlearis

Fossa glandulae lacrimalis

Os occipitale



Pars basilaris

Partes laterales

Squama occipitalis

Foramen magnum

Squama occipitalis



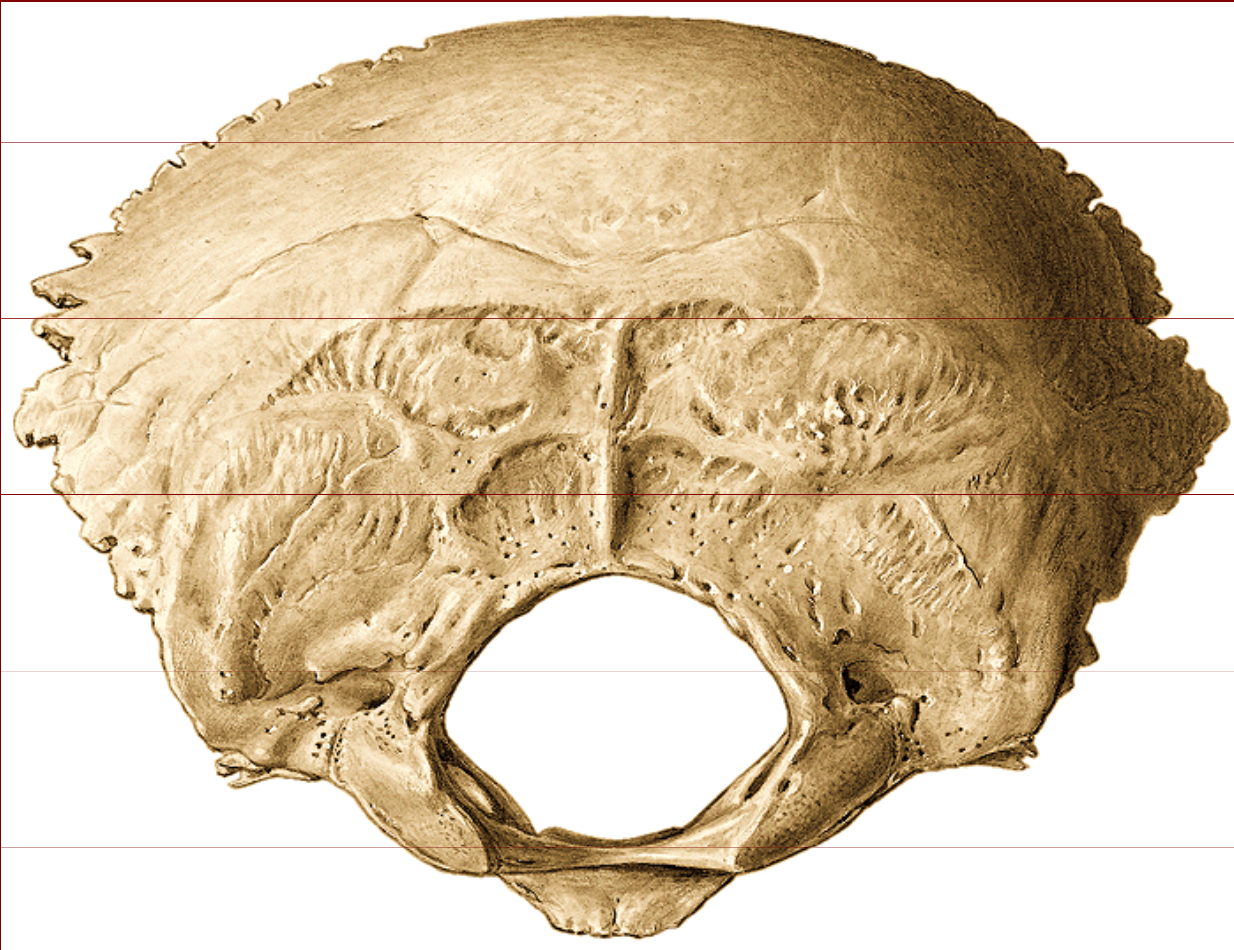
Sutura lambdoidea

Sutura mastoidea

Os Incae

*Ossa interparietalia =
ossa suturarum*

Squama occipitalis



Protuberantia occipitalis
externa

Crista occipitalis externa

Linea nuchea suprema

Linea nuchae superior

Linea nuchae inferior

Foramen magnum

Condyli occipitales

Pars basilaris

Squama occipitalis



Margo mastoideus

Margo lambdoideus

Protuberantia occipitalis
interna

Eminentia cruciata

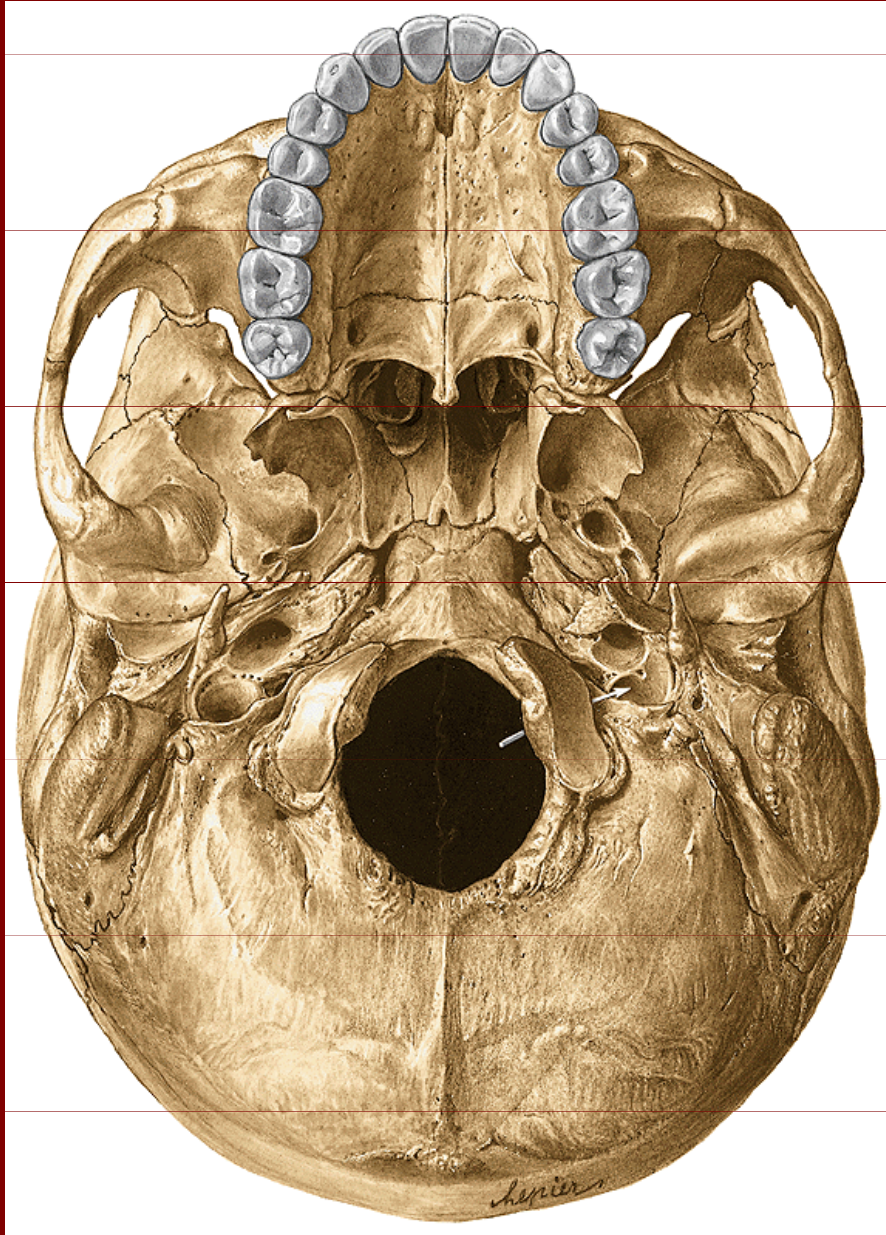
Fossae cerebrales

Fossae cerebellares

Sulcus sinus sagitalis
superior

Sulcus sinus transversi

Os occipitale



Pars basilaris

Tuberculum pharyngeum

Fissura petrooccipitalis

Condyli occipitales

Fossa condylaris

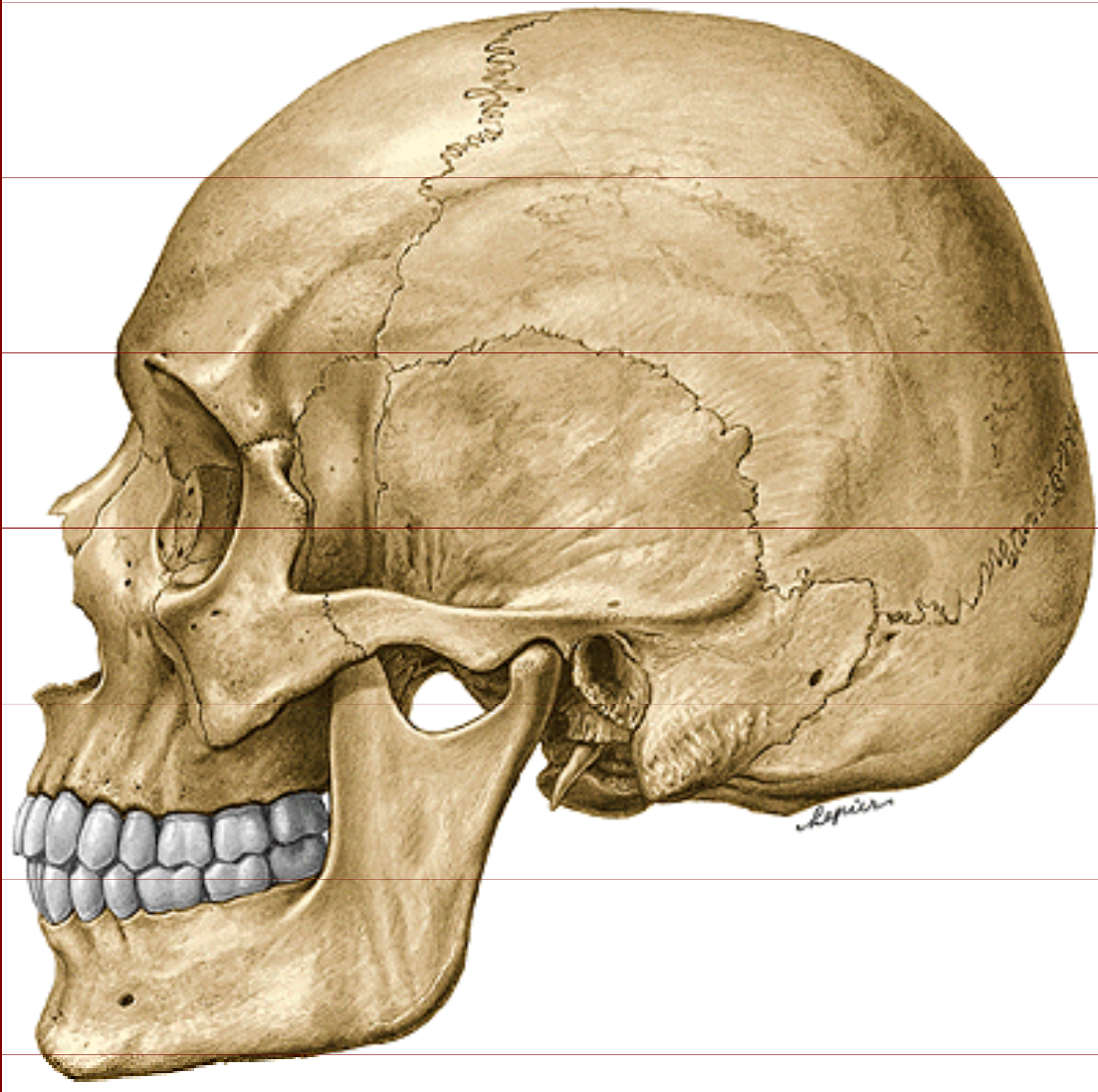
Incisura jugularis

Processus intrajugularis

Sutura occipitomastoidea

Canalis nervi hypoglossi

Os parietale



Margo sagitalis

Margo frontalis

Margo occipitalis

Margo squamosus

Angulus frontalis

Angulus sphenoidalis

Angulus occipitalis

Angulus mastoideus

Os parietale



Facies externa

Tuber parietale

Linea temporalis superior

Linea temporalis inferior



Facies cerebri = interna

Sulci arteriosi

Sulcus sinus sagittalis superior

Foveolae granulares

Sulcus sinus sigmoideus

Poděkování

Pro tuto přednášku byly použity obrázky z
Atlas of Human Anatomy od Sobotty