

REGIONS OF THE UPPER AND LOWER LIMBS



**Regio deltoidea, reg. axillaris, reg. brachii ant., reg. cubiti ant.,
reg. antebrachii ant., palma manus**



**Regio scapularis, reg. brachii post., reg. cubiti post.,
reg. antebrachii post., dorsum manus**

PLEXUS BRACHIALIS:

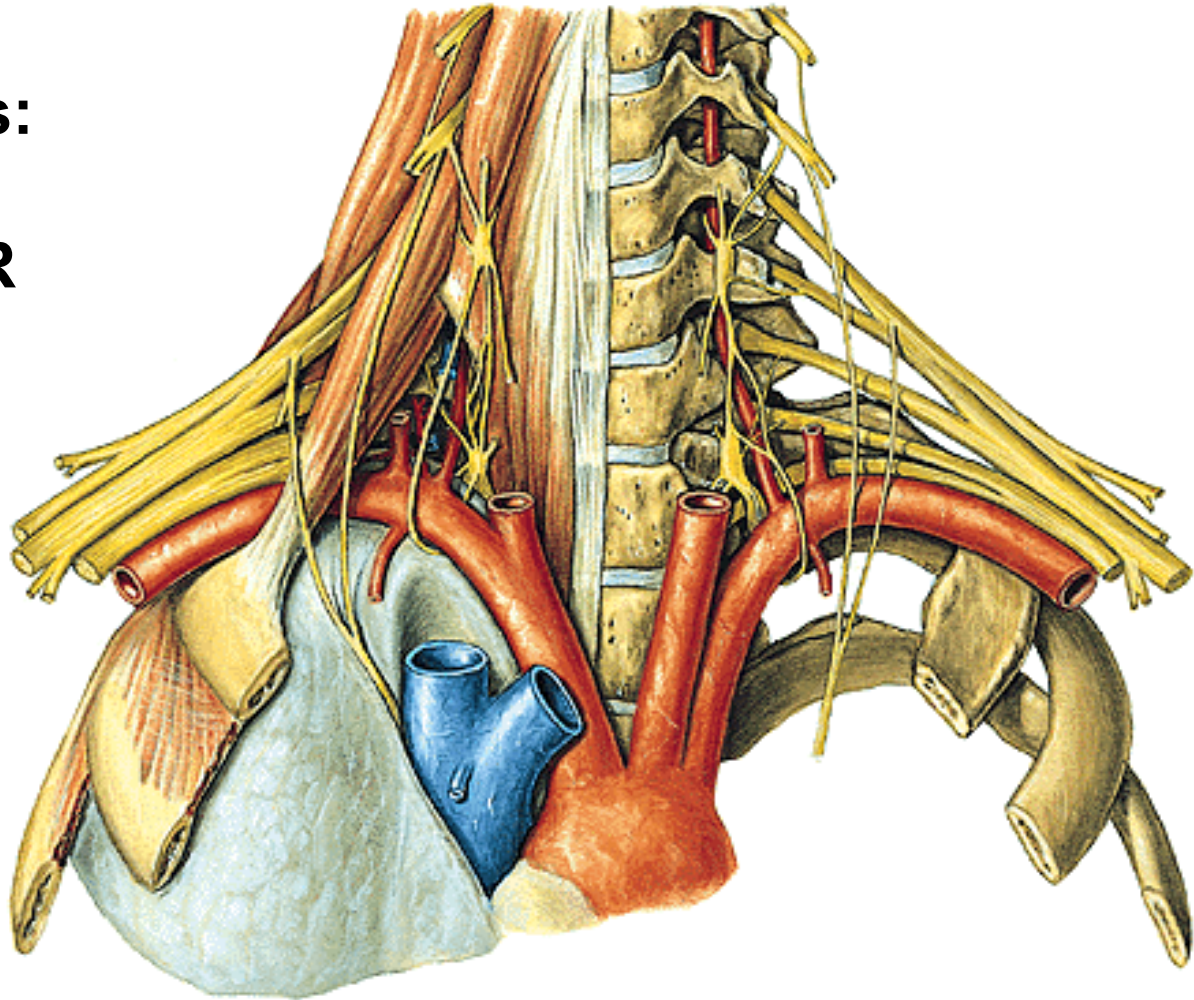
Pars supraclavicularis:

TRUNCUS SUPERIOR

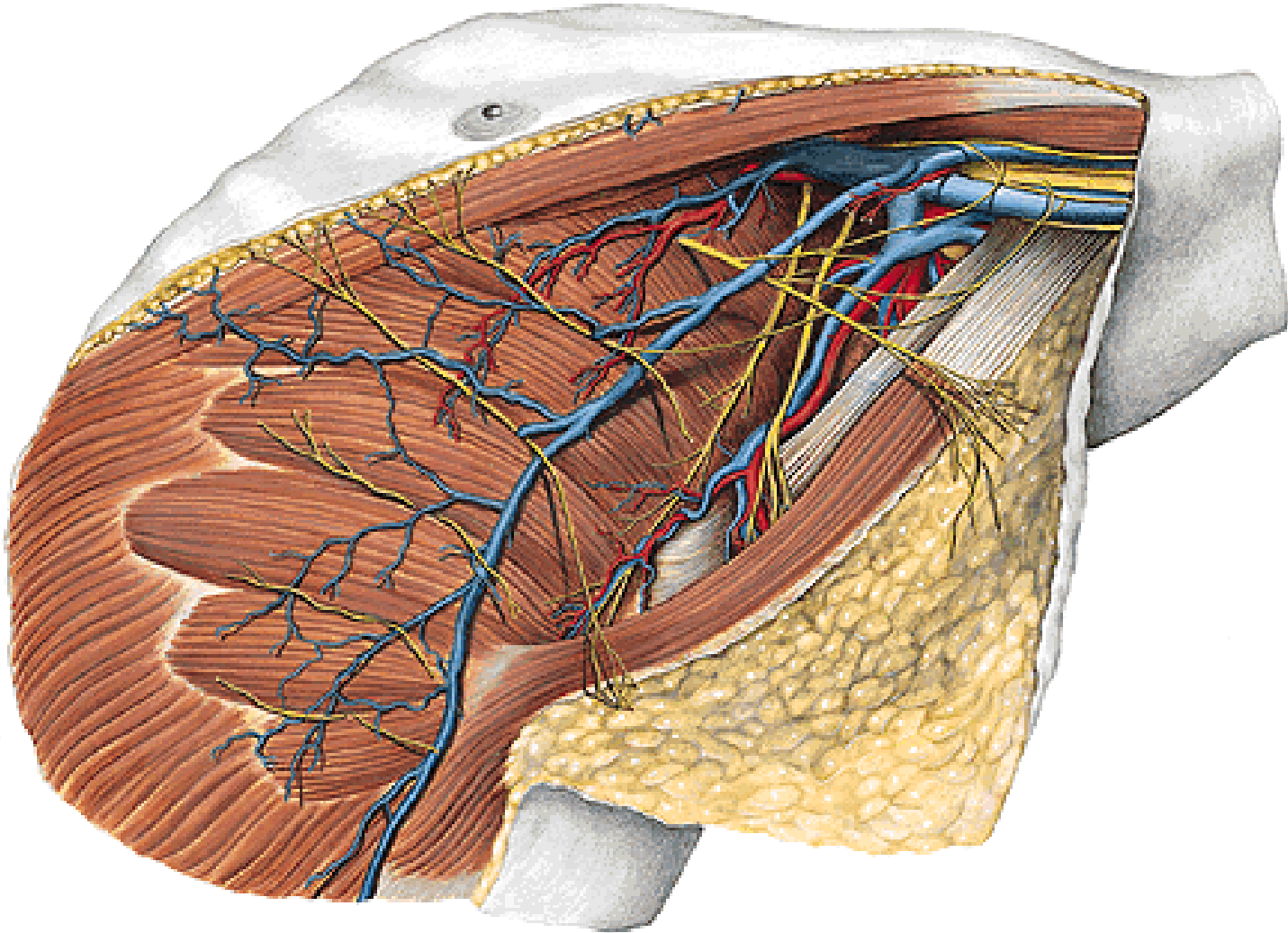
TRUNCUS MEDIUS

TRUNCUS INFERIOR

A. SUBCLAVIA



Fossa axillaris



PLEXUS BRACHIALIS:

Pars infraclavicularis:

FASCICULUS LATERALIS

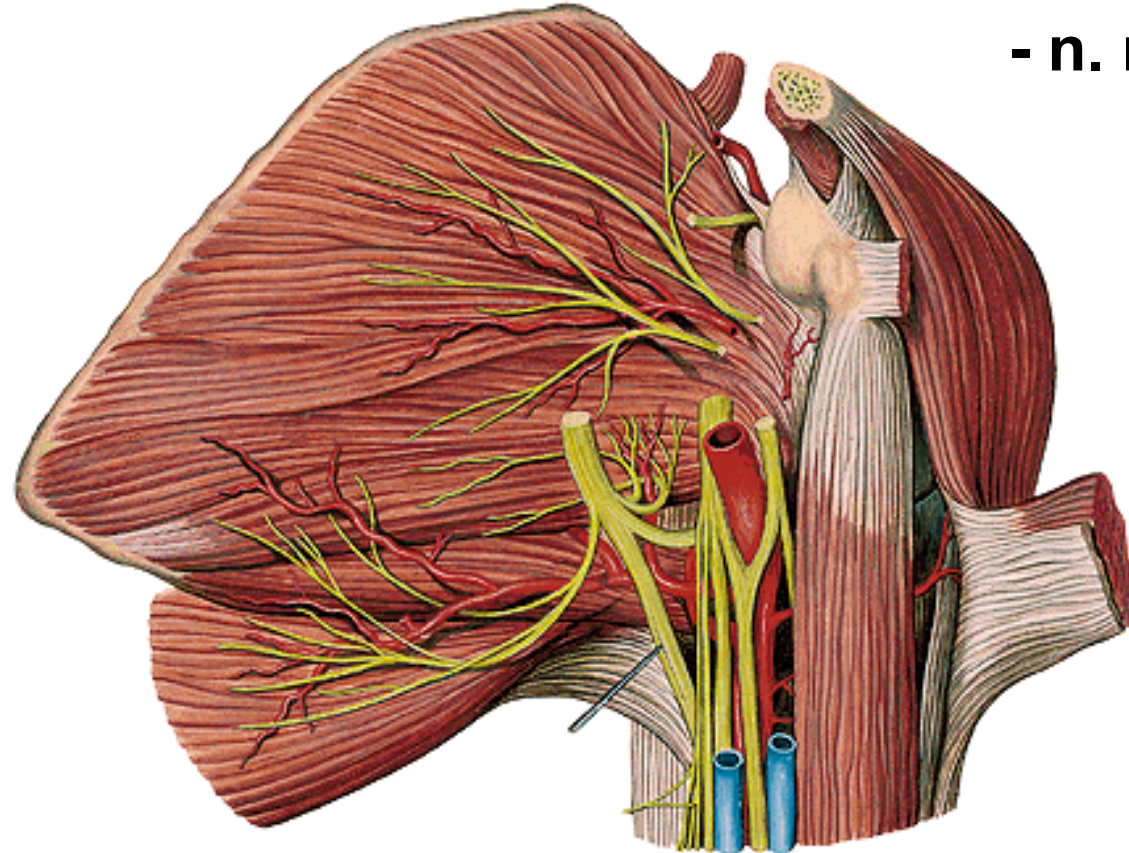
- n. musculocutaneus
- radix lateralis n. mediani

FASCICULUS MEDIALIS

- radix medialis n. mediani
- n. ulnaris
- n. cutaneus antebrachii med.
- n. cutaneus brachii med.

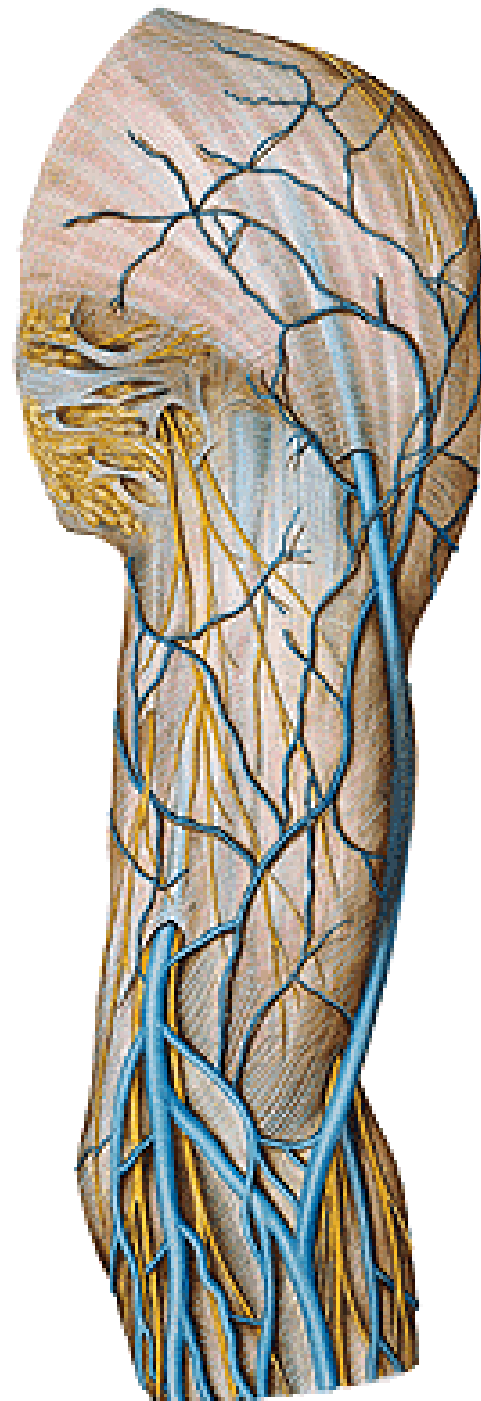
FASCICULUS POSTERIOR

- n. axillaris
- n. radialis

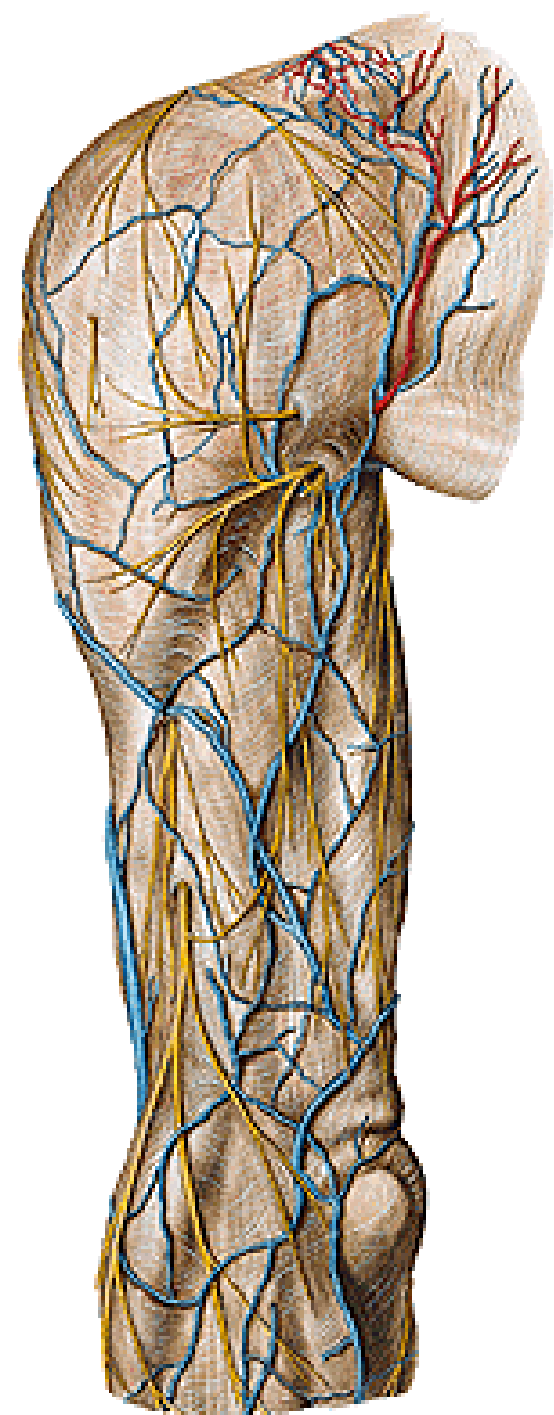


A. et V. AXILLARIS

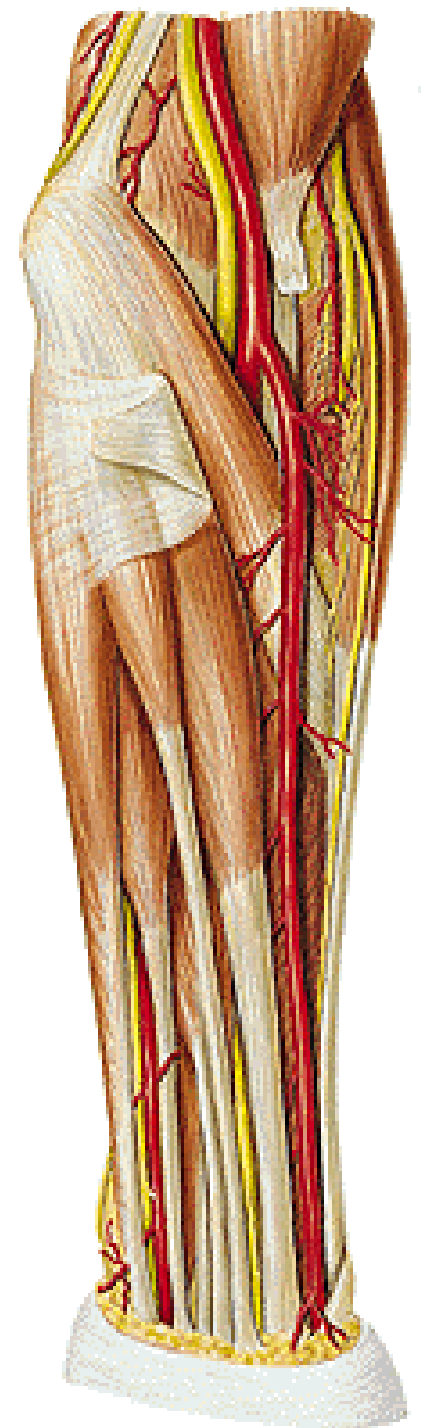
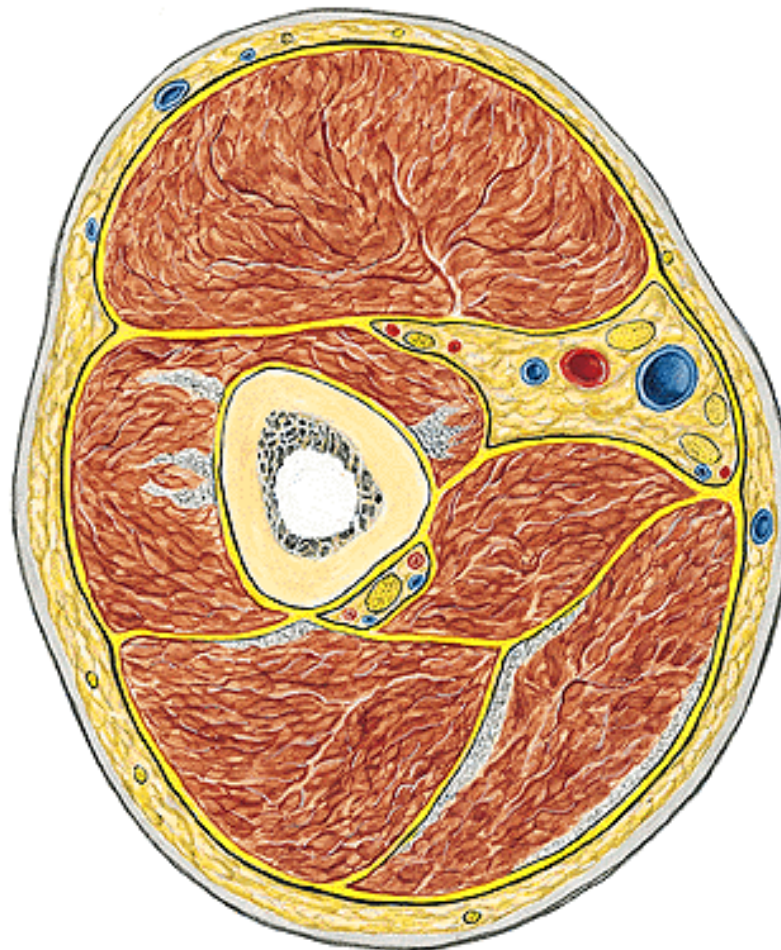
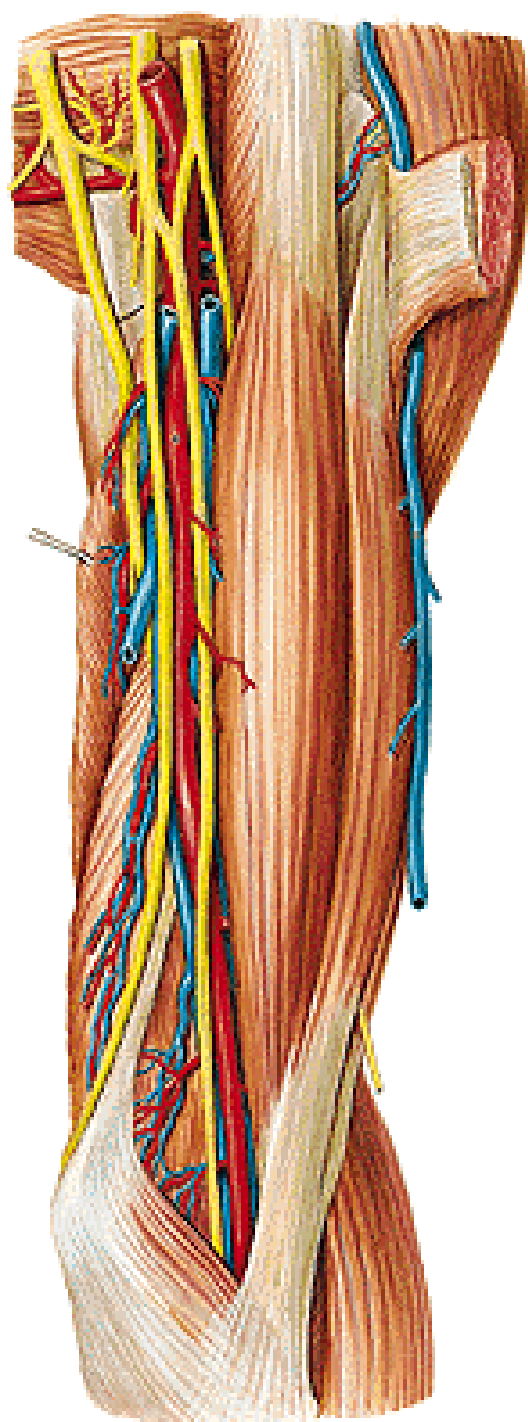
V. CEPHALICA
V. BASILICA



- N. cutaneus brachii lat. sup. (n. axillaris)**
- N. cutaneus brachii lat. inf. (n. radialis)**
- N. cutaneus brachii post. (n. radialis)**
- N. cutaneus antebrachii post. (n. radialis)**



N. medianus
N. ulnaris
Vasa brachialia



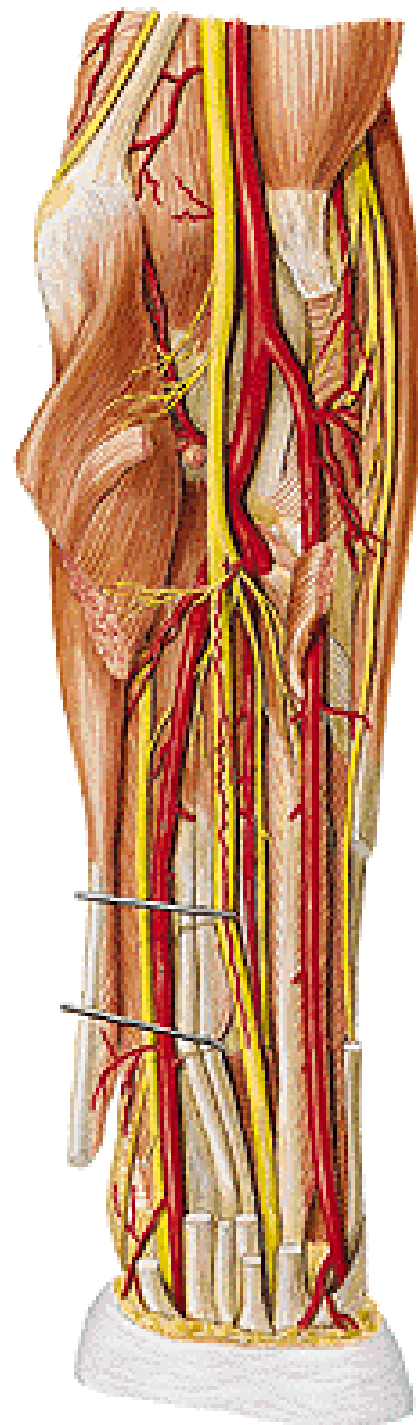
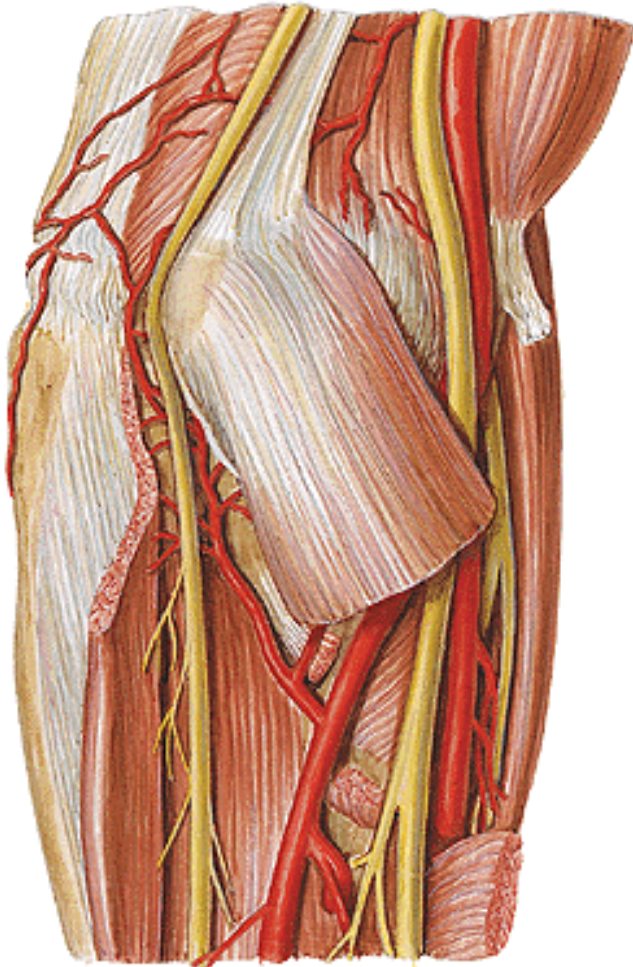
N. ulnaris

N. medianus

Vasa ulnaria

Vasa radialis

Vasa interosse comm. - ant., post.



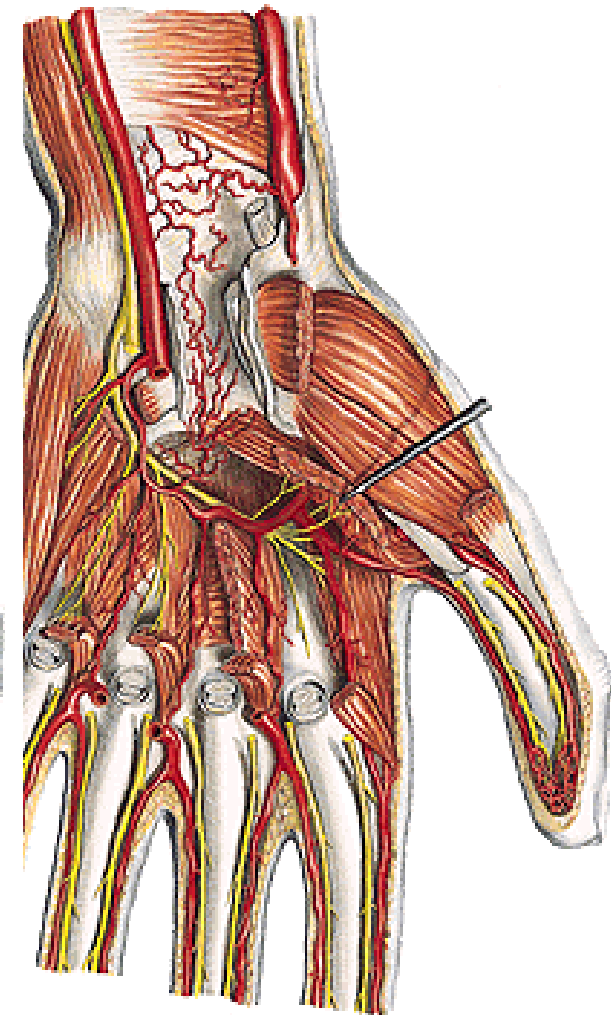
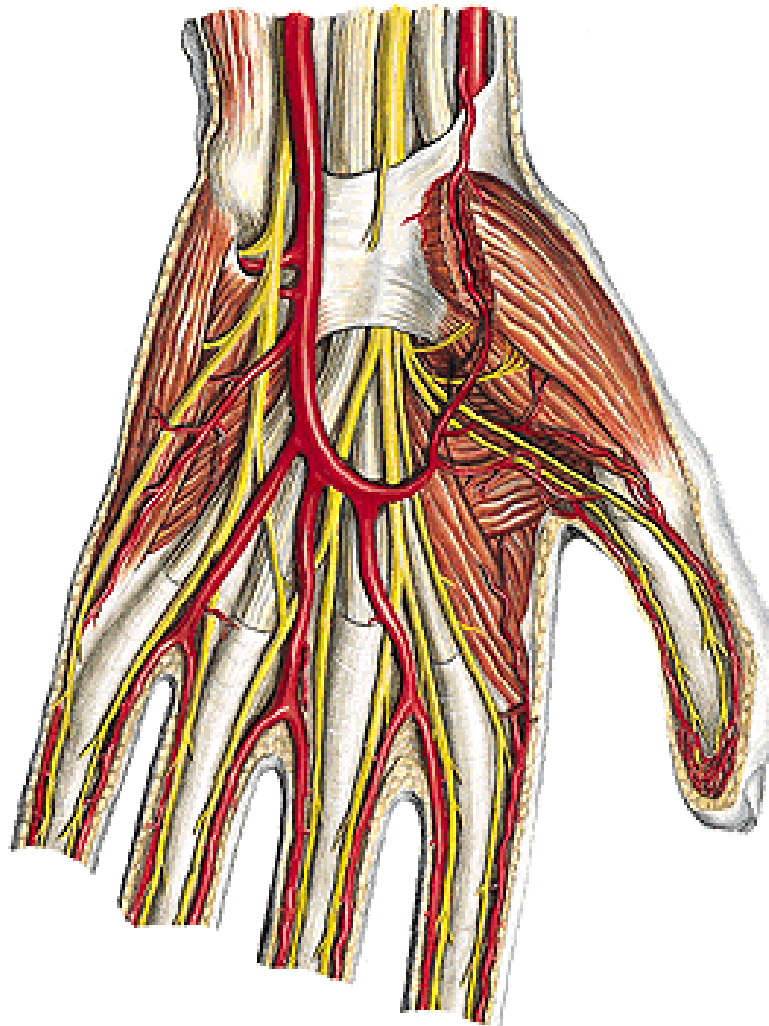
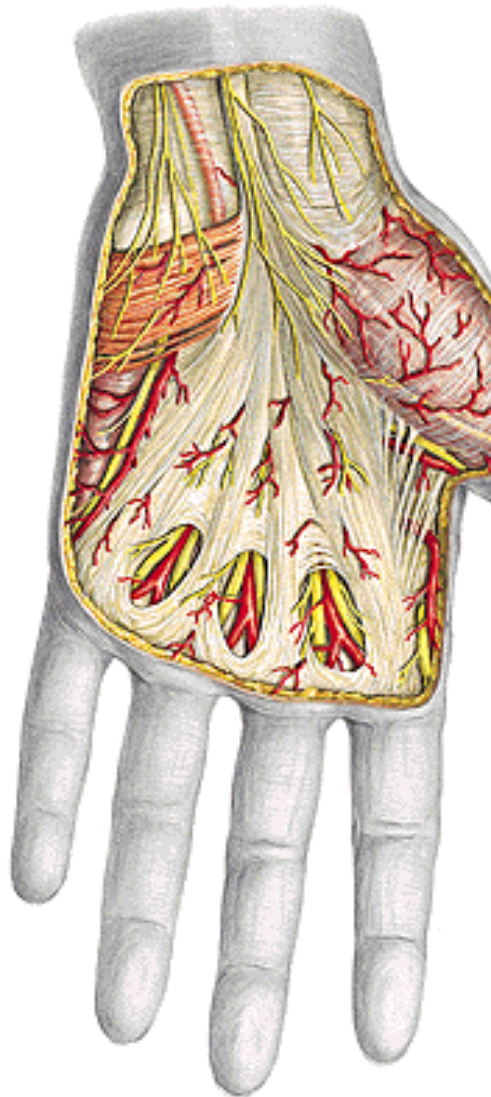
N. medianus

N. ulnaris

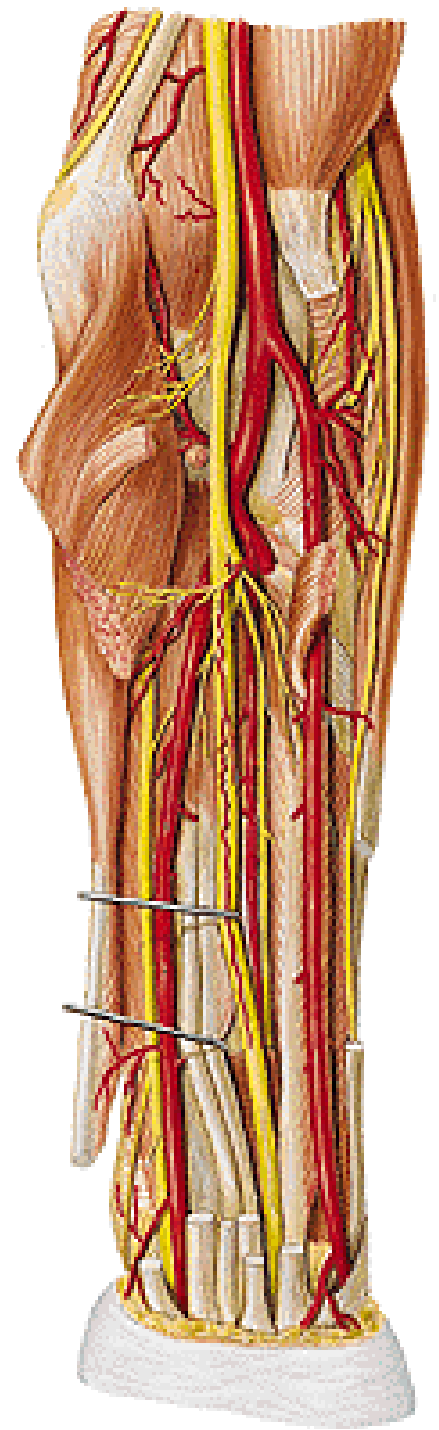
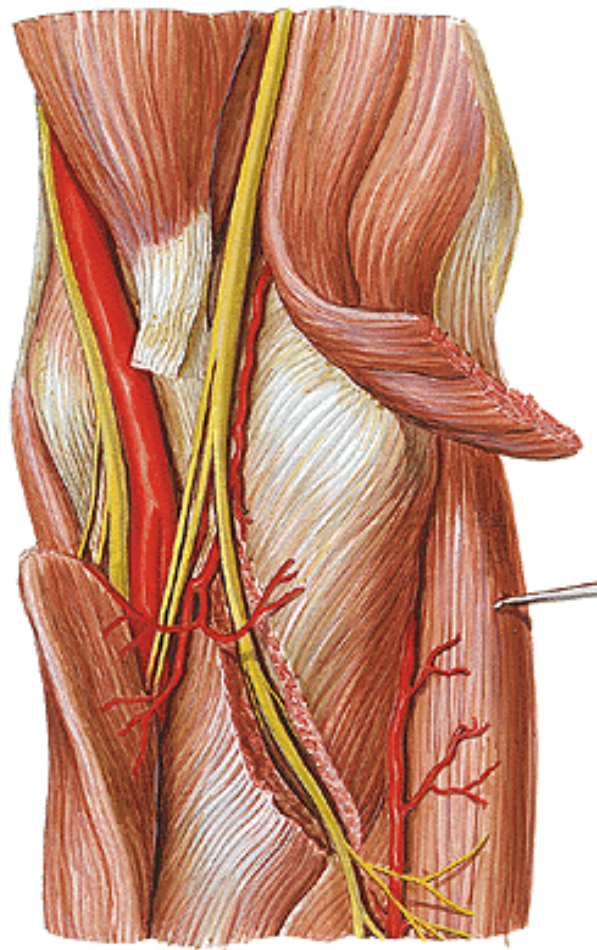
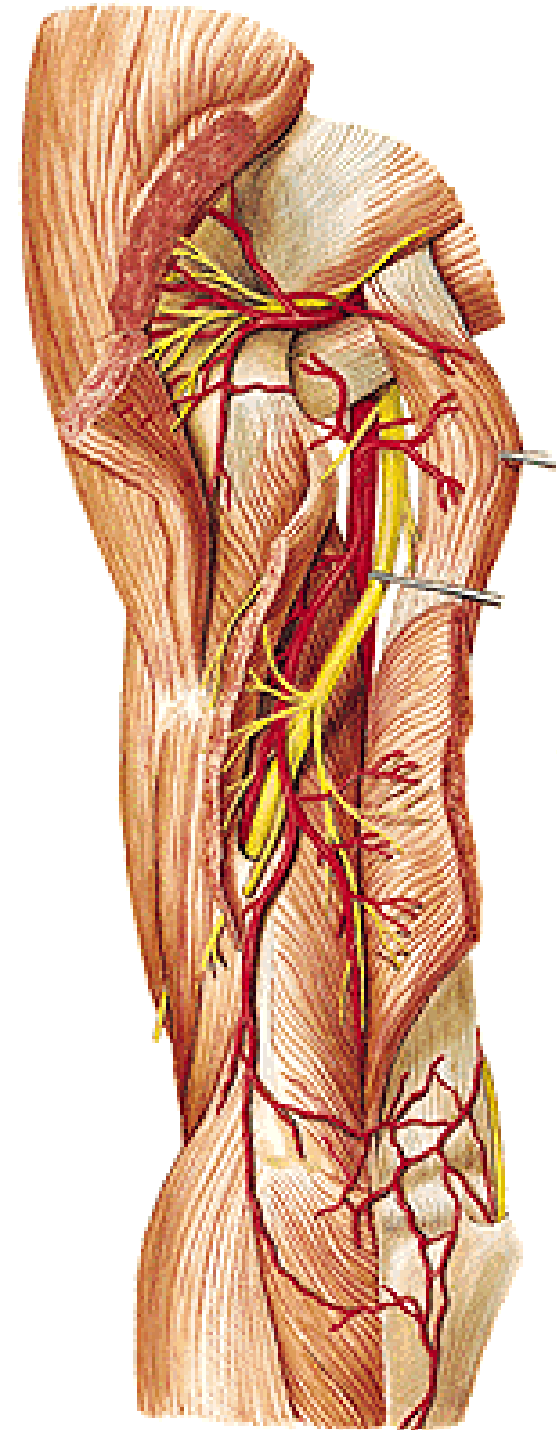
- nn. digitales palmares com.

- nn. digitales palm. proprii

Arcus palmaris spf. et prof.

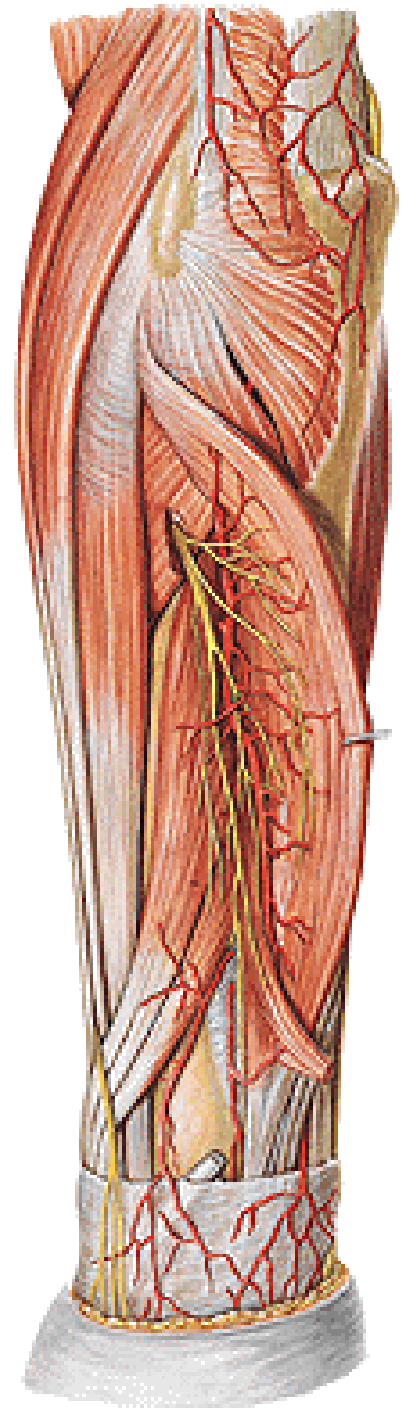
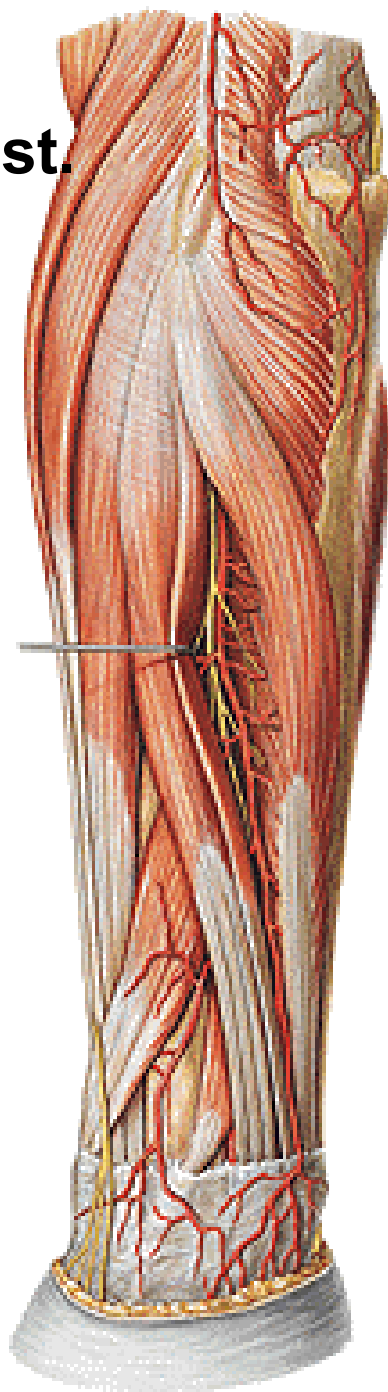


N. axillaris
N. radialis
- r. spf.
- r. prof.



N. radialis

Vasa interossea post.

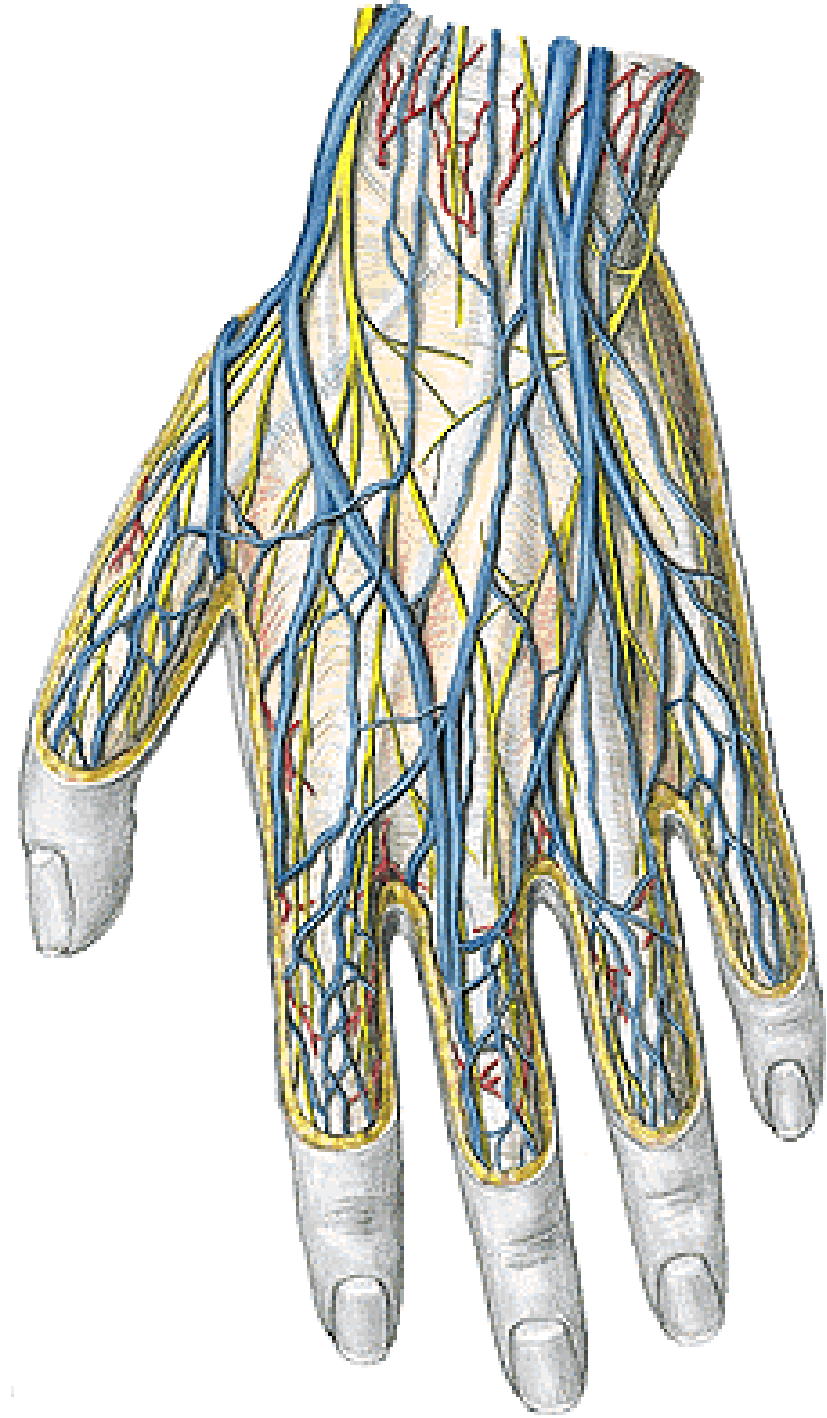


R. spf. n. radialis

- nn. digitales dorsales

R. dorsalis n. ulnaris

- nn. digitales dorsales





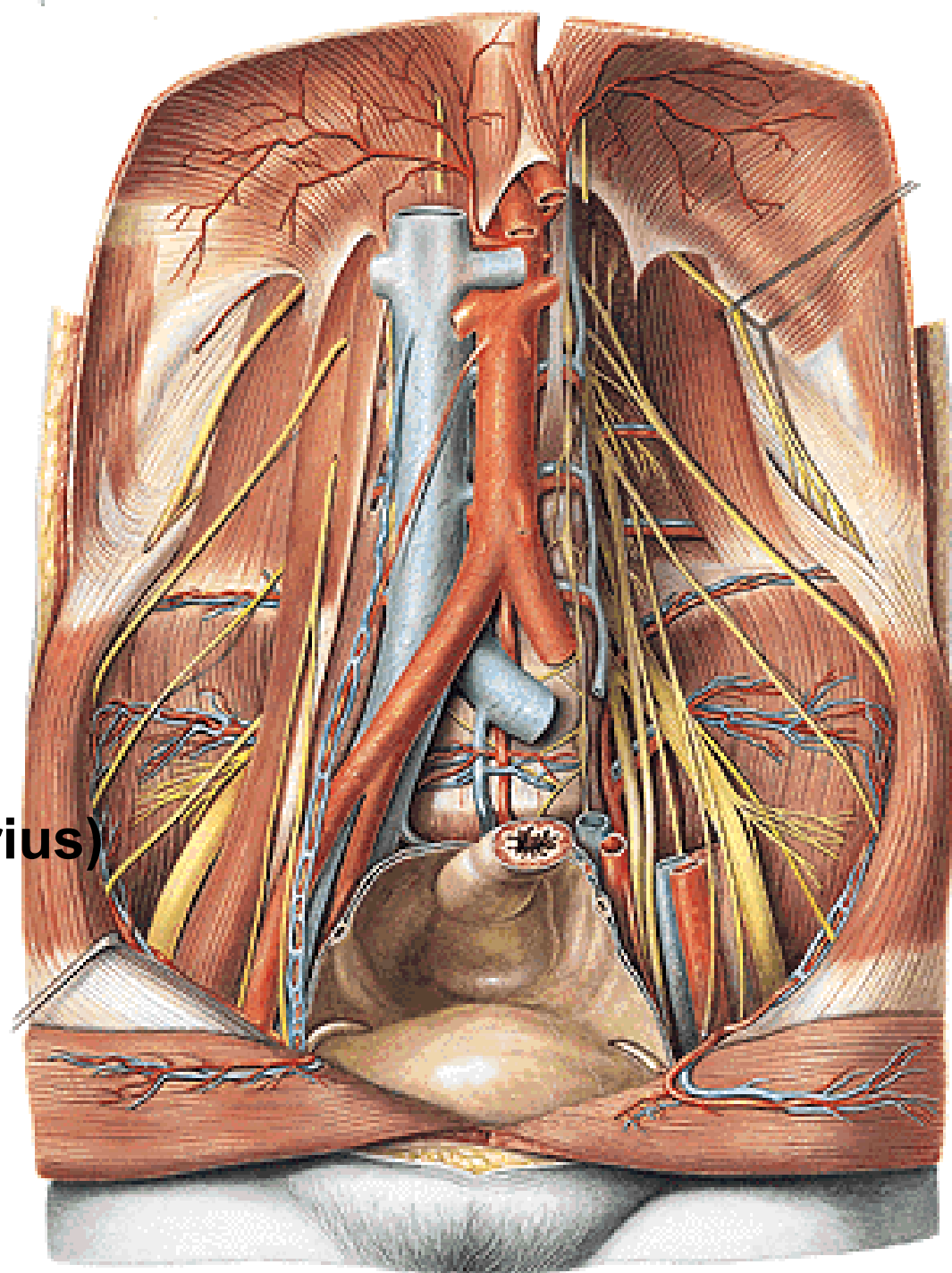
Regio femoris ant.
Reg. genus ant.
Reg. cruris ant.
Dorsum pedis



Regio glutaea
Reg. femoris post.
Reg. genus post.
Reg. cruris post.
Planta pedis

PLEXUS LUMBALIS:

- Rr. musculares**
- N. iliohypogastricus**
- N. ilioinguinalis**
- N. genitofemoralis**
 - r. genitalis
 - r. femoralis
- N. cutaneus femoris lat.**
- N. femoralis**
- N. obturatorius**
(**N. obturatorius accessorius**)



PLEXUS SACRALIS:

Rr. musculares

N. glutaeeus sup.

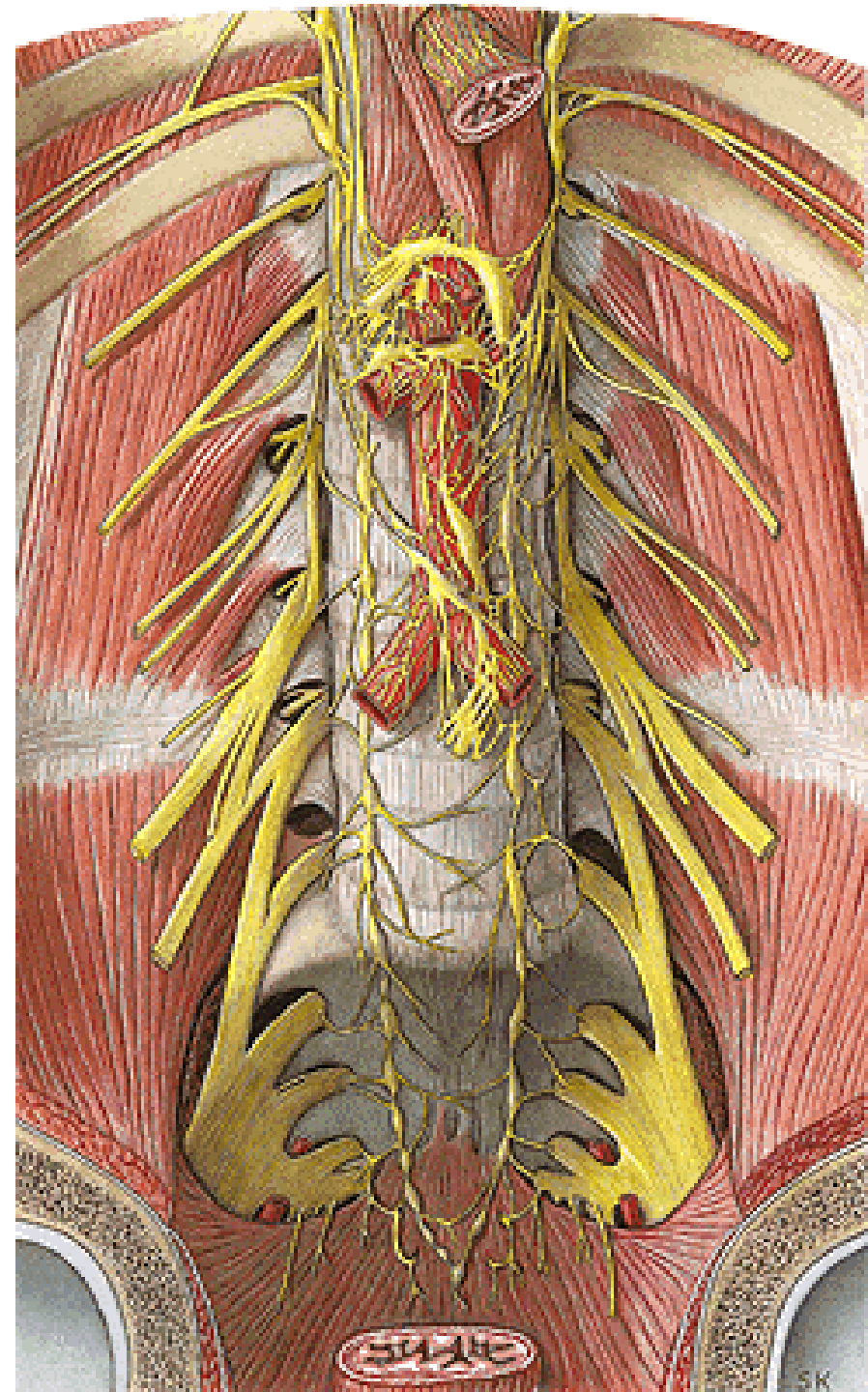
N. glutaeeus inf.

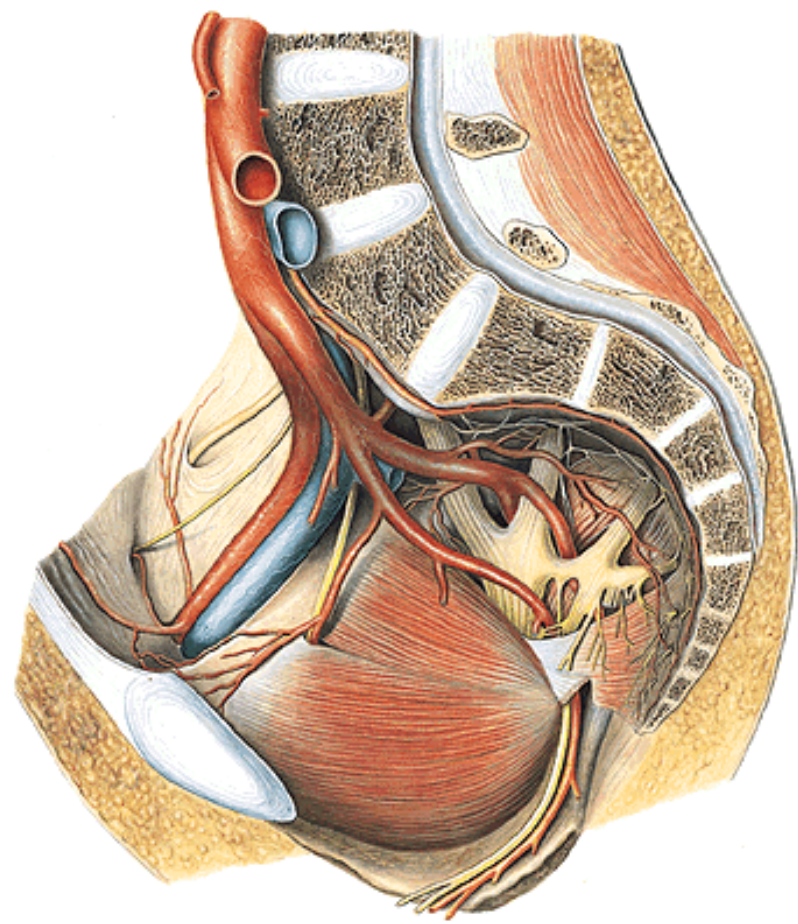
N. ischiadicus

N. cutaneus femoris post.

N. pudendus

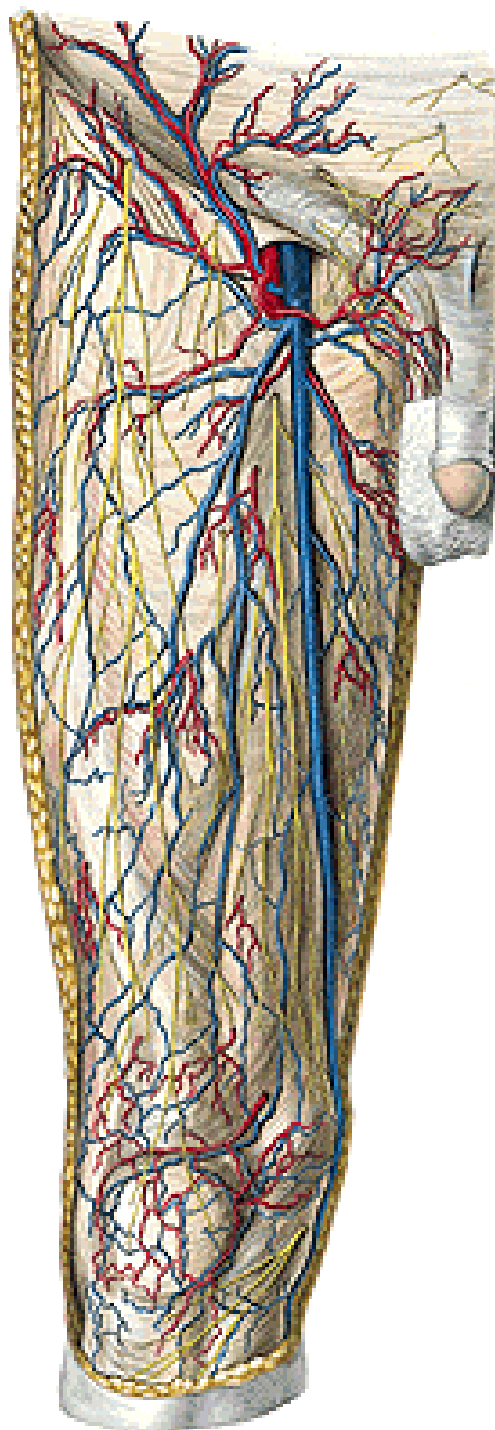
Plexus coccygeus





**Vasa iliaca comm. –
int. et ext.**

V. saphena magna



TRIGONUM FEMORALE

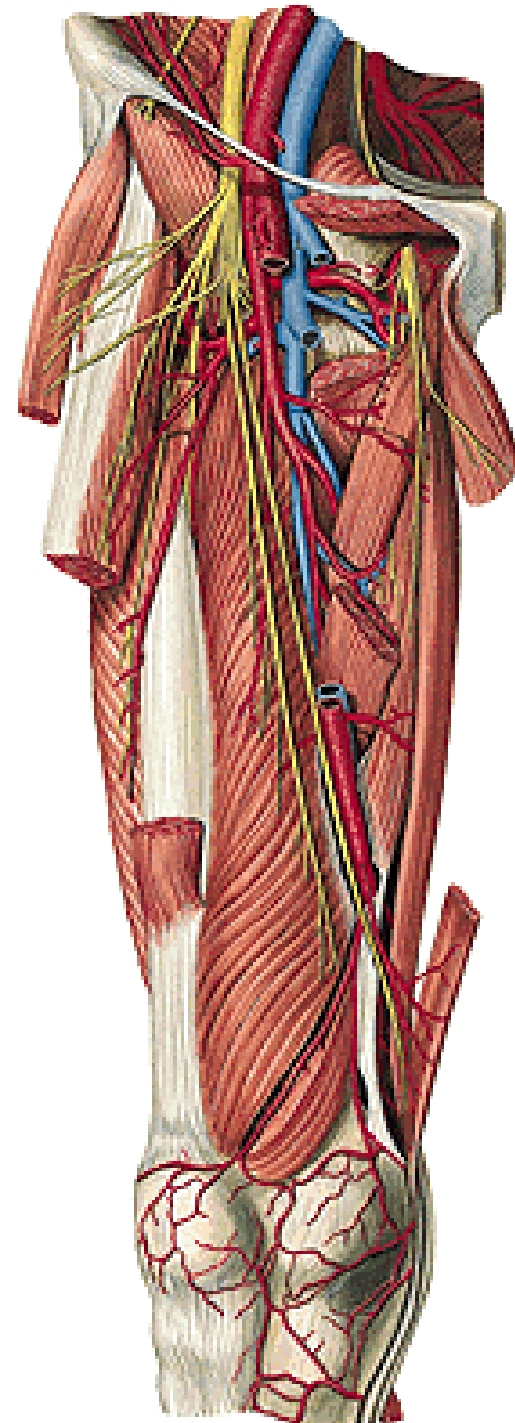
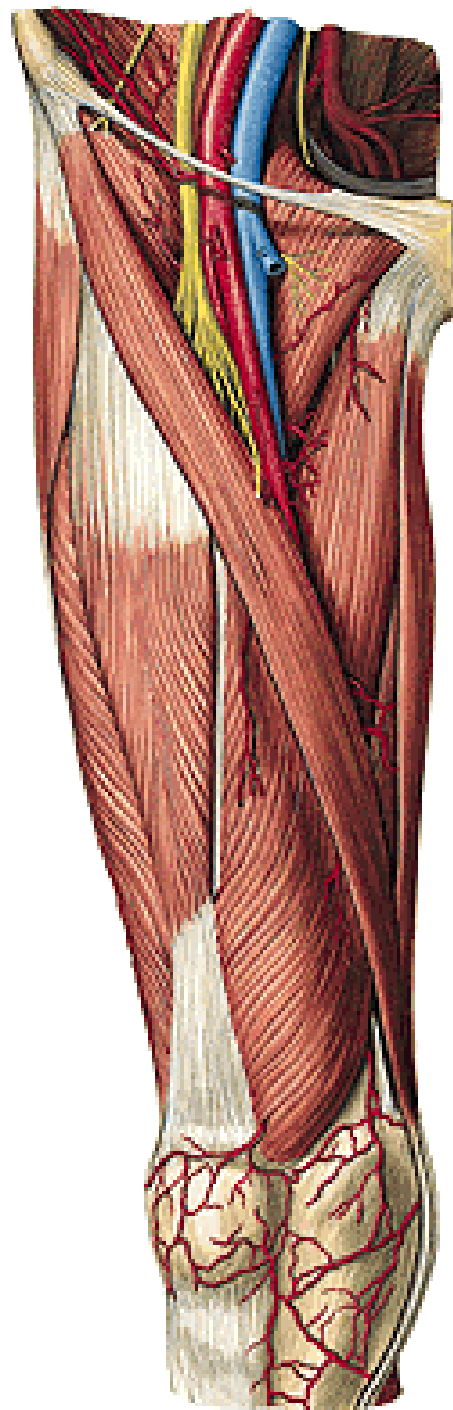
N. femoralis

N. obturatorius

Vasa femoralia

Vasa obturatoria

Canalis adductorius

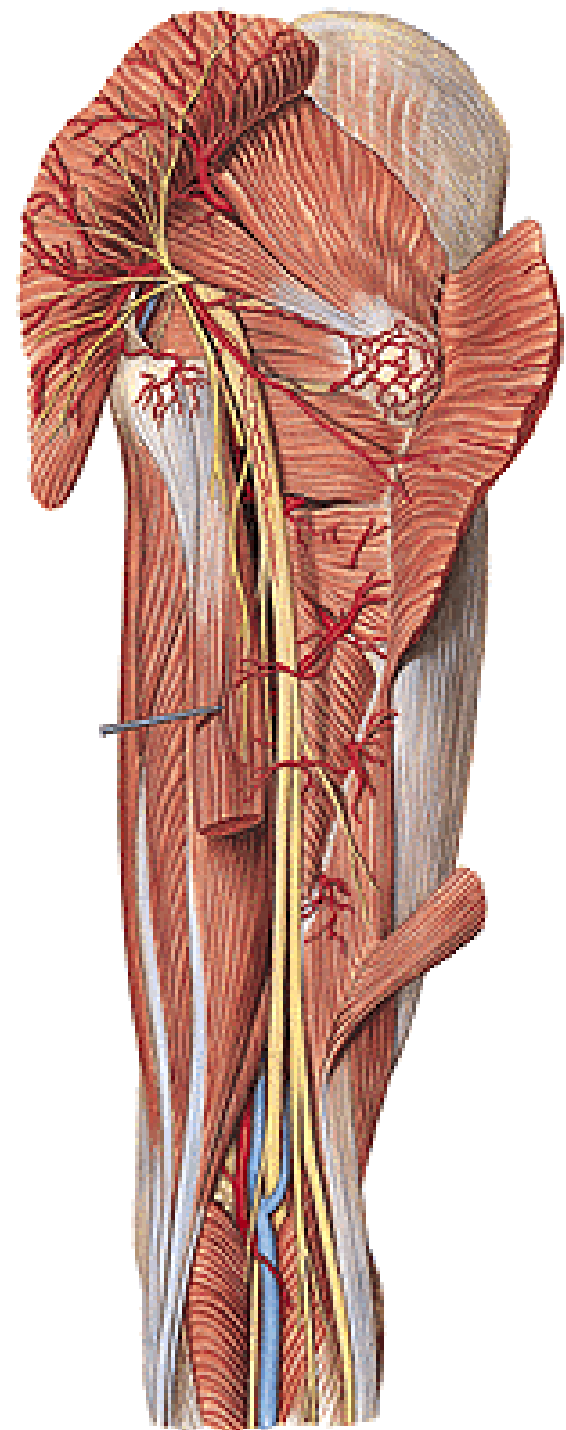


Foramen suprapiriforme:

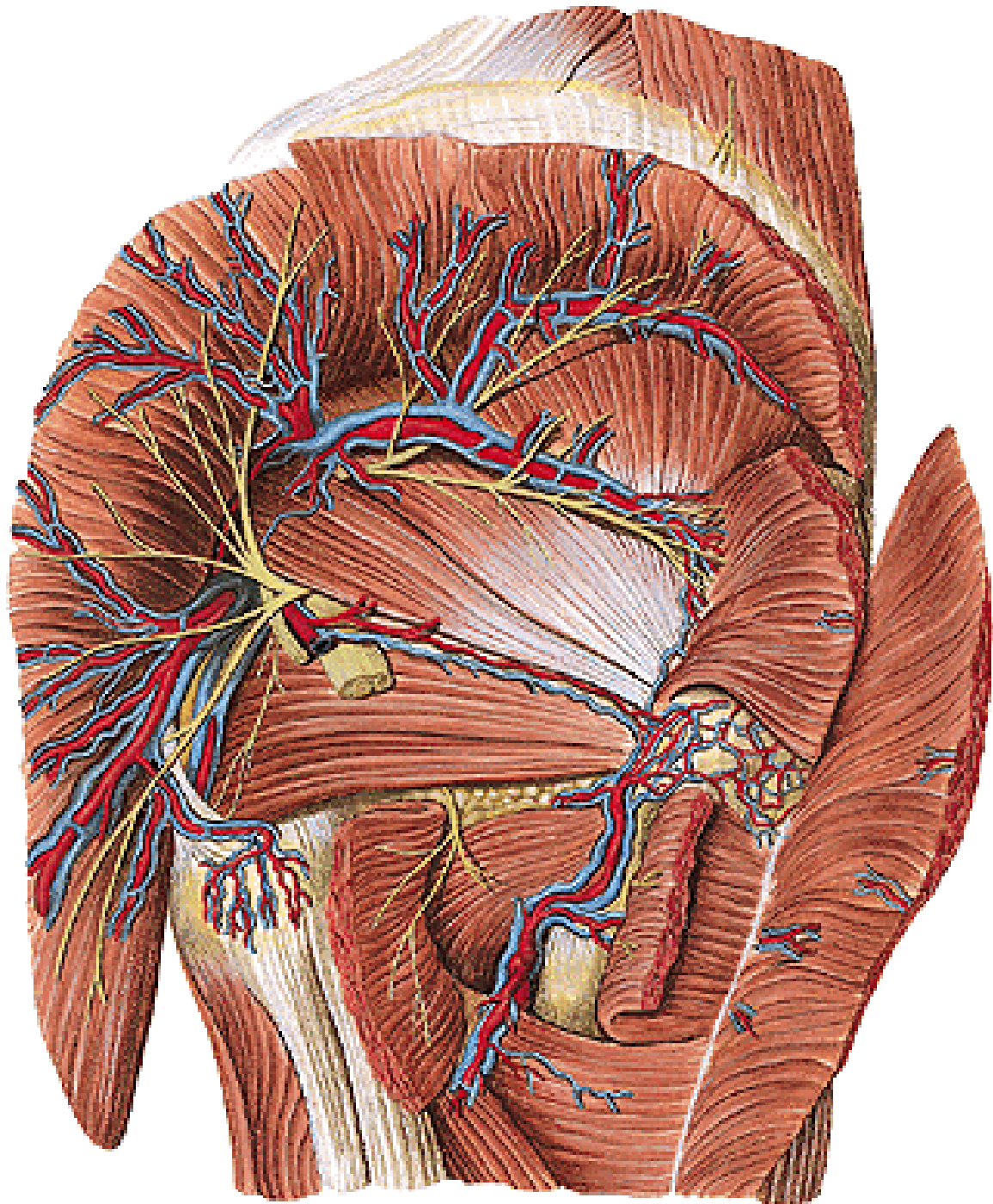
- n. et vasa glutea sup.

Foramen infrapiriforme:

- n. et vasa glutea inf.
- n. ischiadicus
- n. cutaneus femoris post.
- n. pudendus
- vasa pudenda int.

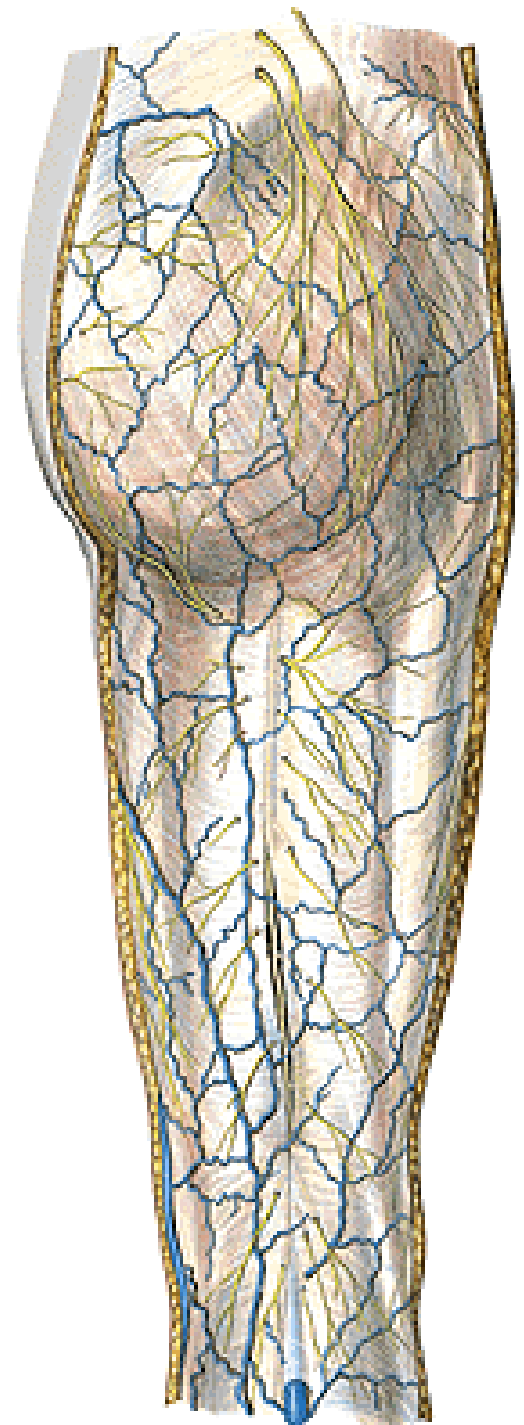


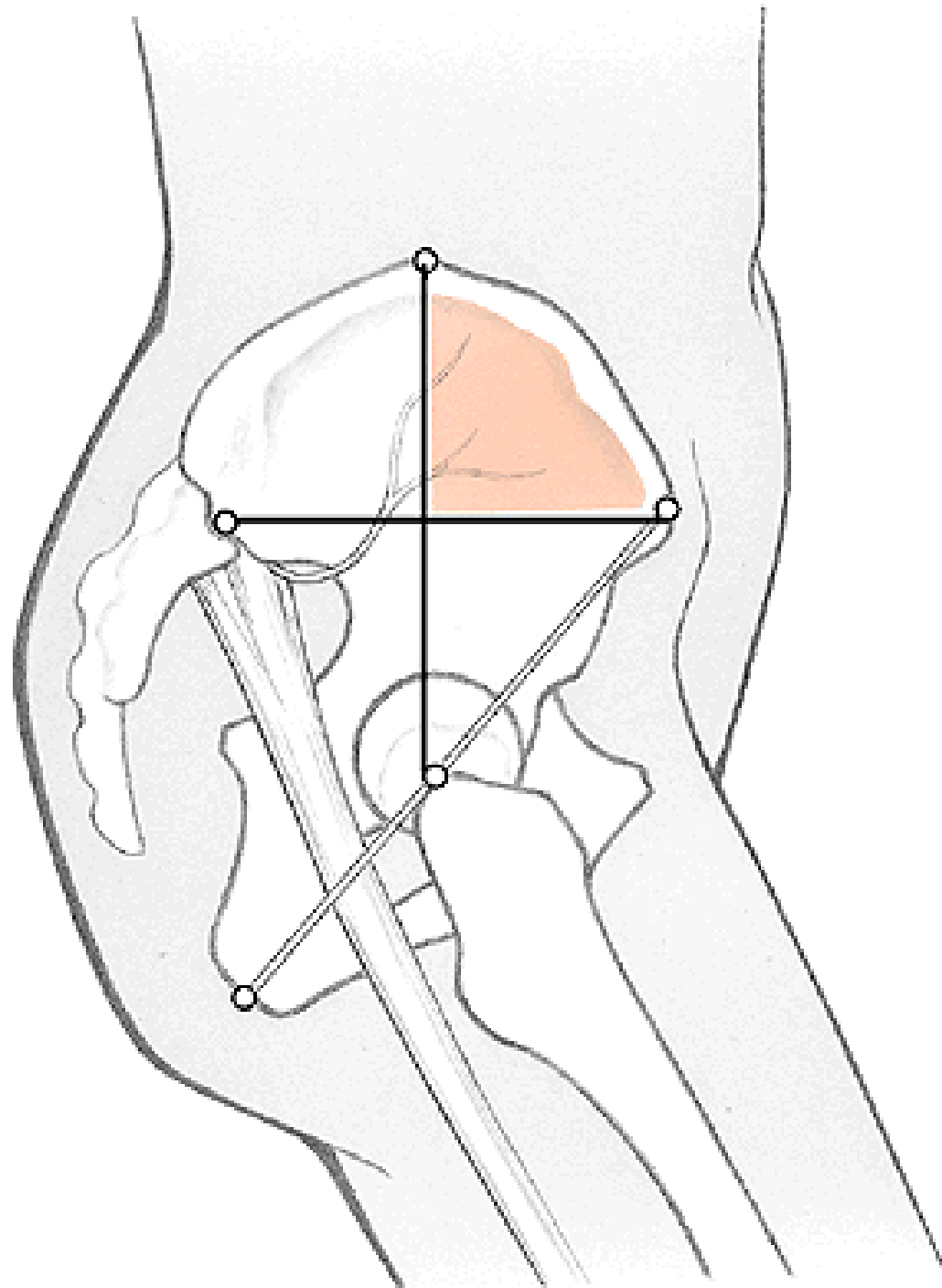
N. GLUTAEUS SUP.
N. GLUTAEUS INF.



N. CUTANEUS FEMORIS POST.:

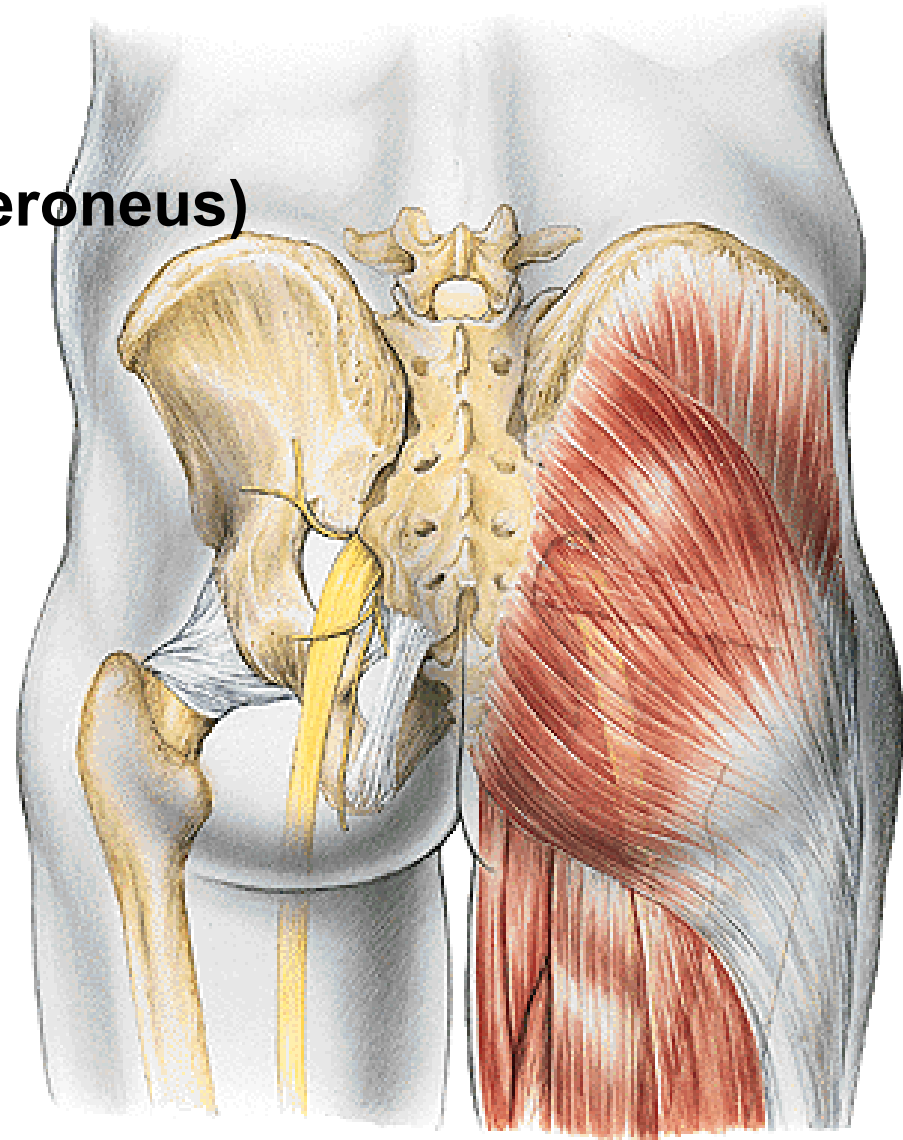
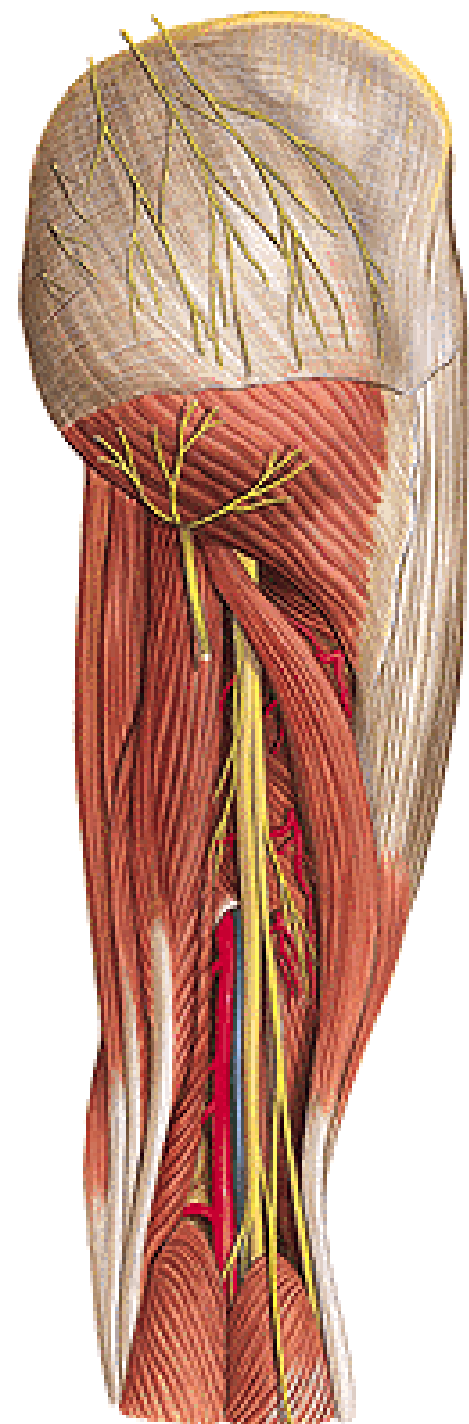
- nn. clunium inf.
- rr. perineales
- rr. cutanei





N. ISCHIADICUS:

- rr. musculares
- rr. articulares
- n. tibialis
- n. fibularis (peroneus) communis

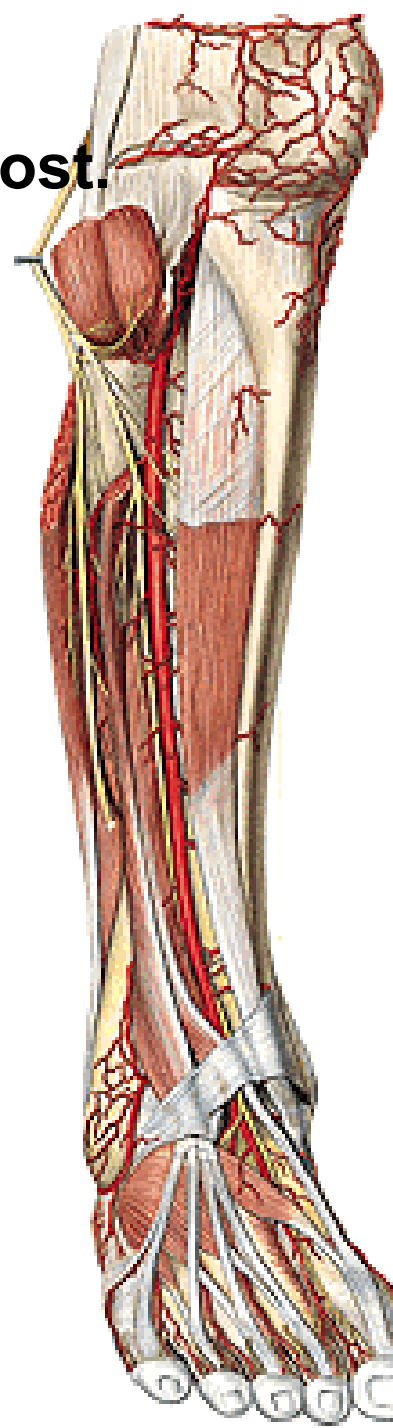
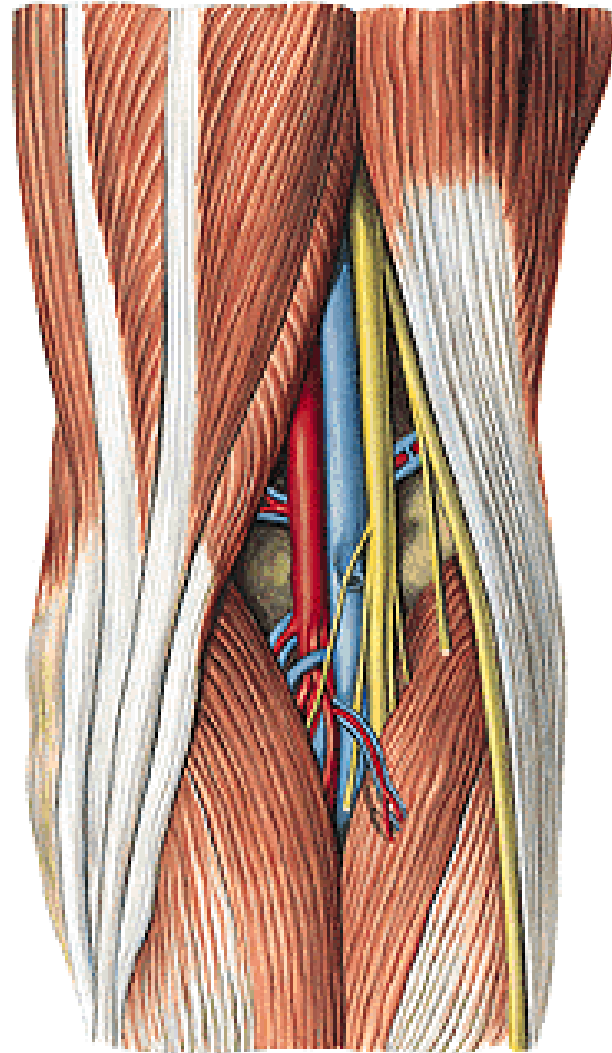
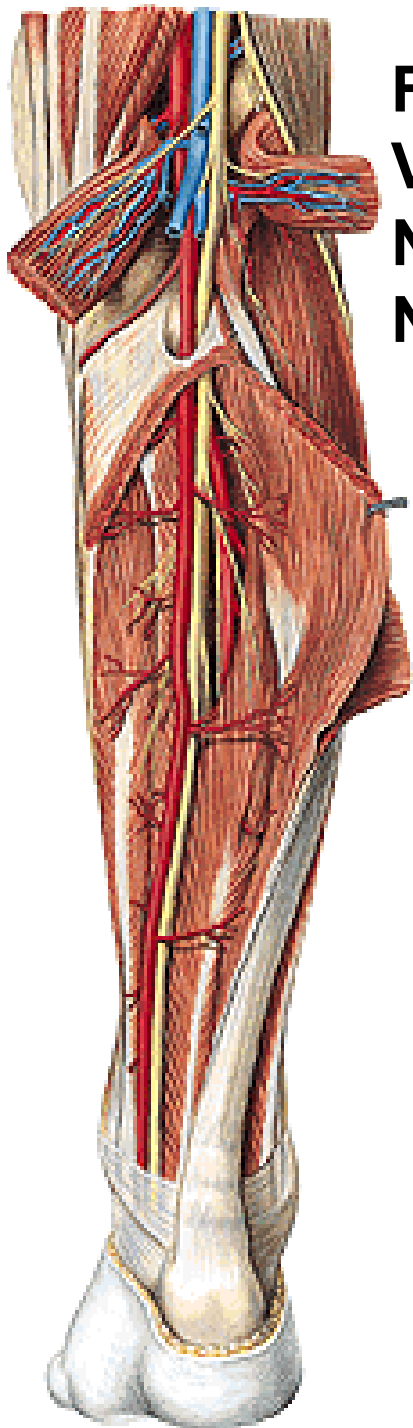


FOSSA POPLITEA

Vasa poplitea – vasa tibialia ant. et post.

N. tibialis

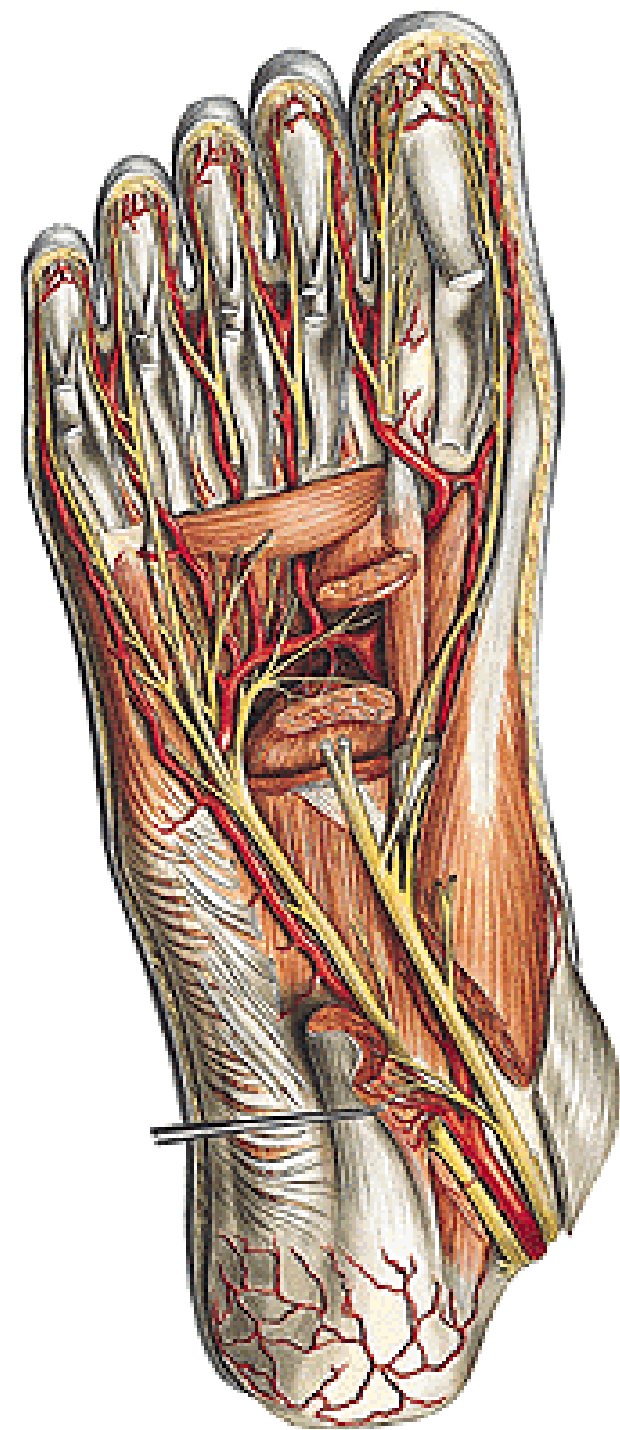
N. fibularis com. – spf. et prof.



N. plantaris lateralis:

- r. superficialis
 - nn. digitales plantares communes
 - nn. digitales plantares proprii
- r. profundus

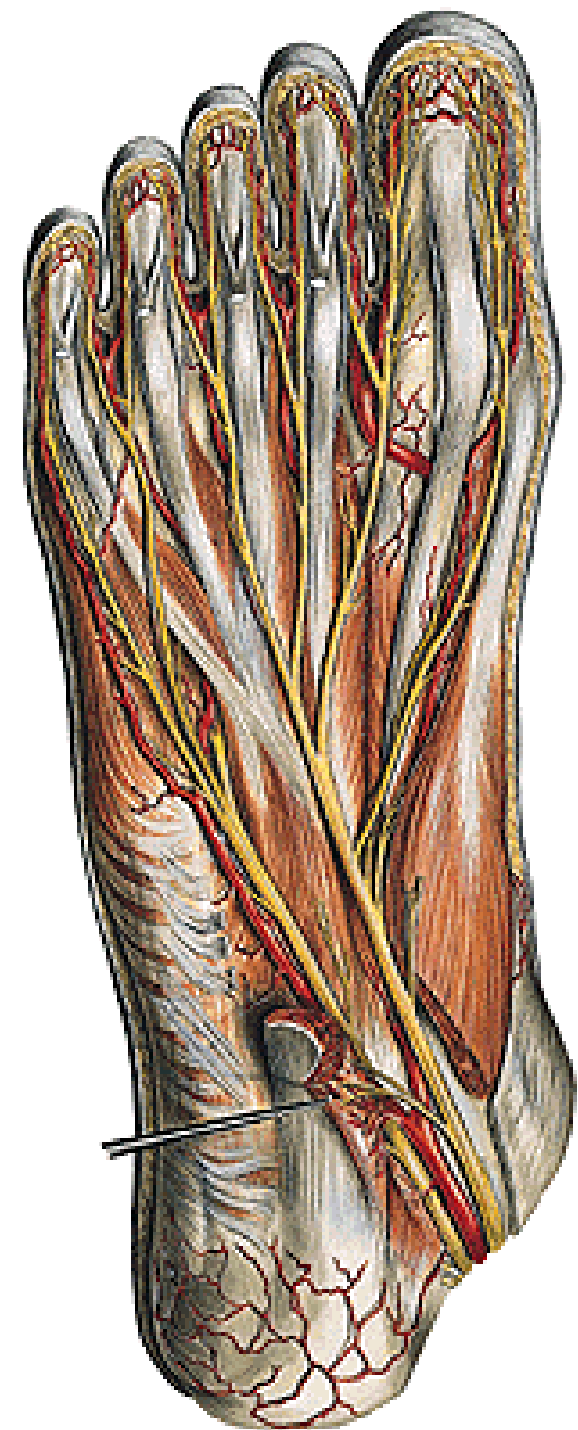
Vasa plantaria lat.



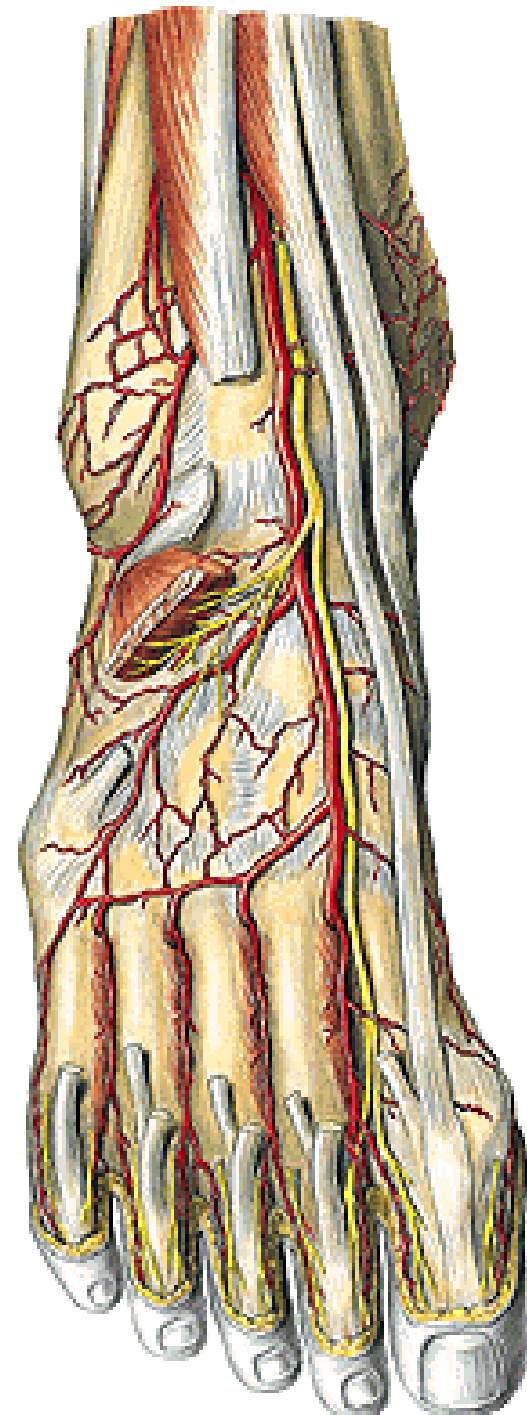
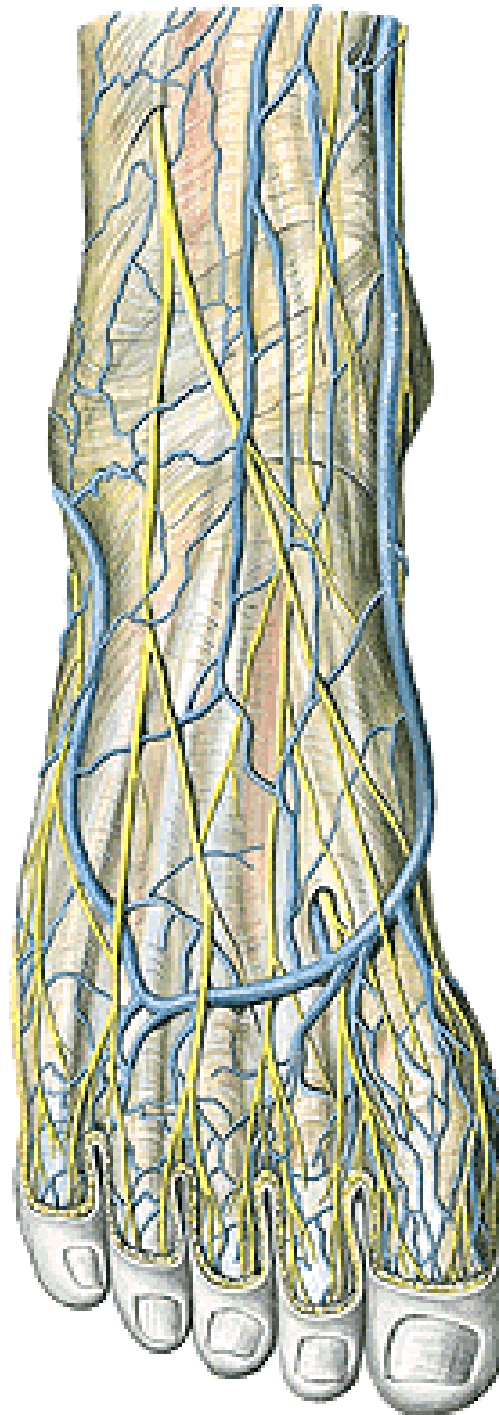
N. plantaris medialis:

- rr. musculares
- nn. digitales plantares communes
- nn. digitales plantares proprii

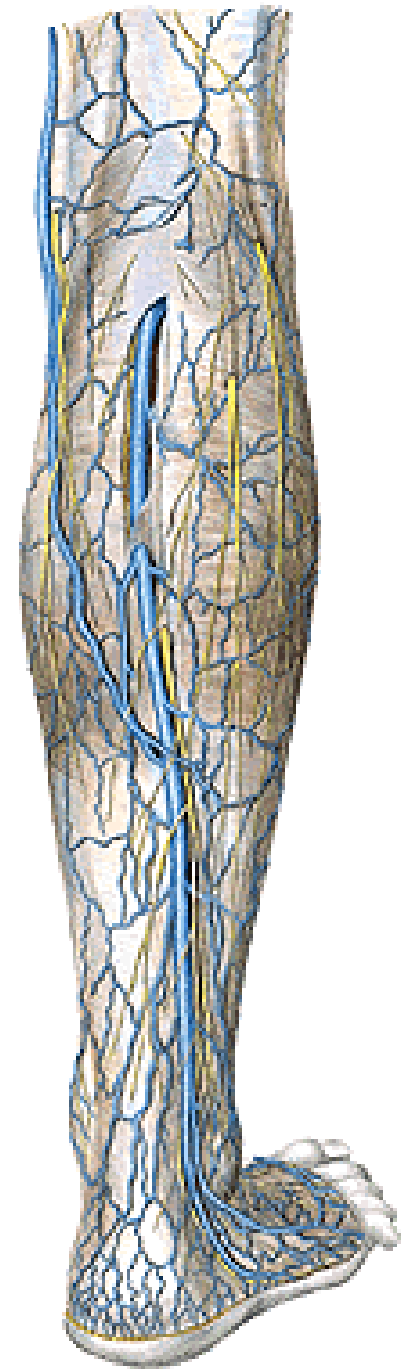
Vasa plantaria med.



Vasa dorsalia pedis
N. fibularis spf.
N. fibularis prof.
V. saphena magna
V. saphena parva



V. saphena parva



Illustrations and photographs were copied from:
Atlas der Anatomie des Menschen/Sobotta.
Putz,R., und Pabst,R. 20. Auflage. München:
Urban & Schwarzenberg, 1993)